

VILLAGE

Cheshire's Community Magazine

Issue 152 November 2013 FREE

life

U
urban

BUILDING PROJECTS LTD

Residential & Commercial
Building Specialists

Tel: 01925 730888

www.urbanbuildingprojects.co.uk



**'Turned out
nice again'**

Page 4

Grange Farm Logs

Logs and Smokeless Fuel

www.grangefarmlogs.co.uk

info@grangefarmlogs.co.uk

01925 290062

Stone Cross Lane
South, Lowton,
Warrington
WA3 1JU



Warrington
jobs fair

I will be holding a Jobs Fair on **Friday 7th February 2014** at The Parr Hall.

"This is a fantastic opportunity for employers to meet talented, local people looking for jobs."

David Mowat - MP for Warrington South

If you are a business that would like a stand at the Jobs Fair, please call **01424 441833** or email: terri@eventsoffice.co.uk

www.warringtonjobsfair.com



The co-operative funeralcare

Our caring staff are here to listen and advise you, 24 hours a day, 7 days a week.

- Pre-Paid Funeral Plans for complete peace of mind.
- Relieve the emotional and financial burden on family and friends.

Stockton Heath 63 London Road
01925 262 000

Warrington Bewsey Road
01925 445 555



'Craft bar' wins approval

A "CRAFT bar" – selling speciality beers – can open in a former video store, planners have decided.

They were told the bar, which would sell craft beers and real ales, from the former Blockbuster video store in Walton Road, Stockton Heath, would

provide two full time and three part time jobs and add to the diversity of food and drink provision in the village.

Stockton Heath Parish Council had opposed the scheme on the grounds it would result in an unacceptable loss of a retail unit and damage the village shopping centre's daytime economy.

They believed it would not add to the cultural provision in the village and be unsuitable for young people and children.

But planning chiefs said it was not the type of establishment that would attract "drunken yobs" and granted planning consent for a change of use.

Whites Sports
Warrington Market
1901 - 2001 - 100 YEARS OF EXCELLENCE

Specialists in:
Darts, Bowls, Snooker, Air Guns, Walking Sticks, Warrington Town Merchandise, Rugby, Cricket, Football

GIFT VOUCHERS AVAILABLE

Telephone/Fax:
01925 631531



We Clean Ovens ...so you don't have to!

Call us today to leave your cooking appliances sparkling, using our eco friendly products.

oven
oven valeting service
Local | National | Affordable

Our oven cleaning experts will leave you free to enjoy your valuable leisure time.

Call for LOCAL service
01925 453377 oven.co.uk



The Park Royal
Warrington, Cheshire

WELCOME TO THE FESTIVE SEASON

Celebrate the festive season this year in the warm and welcoming atmosphere of The Park Royal. We have everything you need to celebrate with colleagues, friends and family.

Live music Christmas Party

Join us for a Christmas to remember with a delicious three course meal, and entertainment.

Themed Private Party Nights

Make Christmas 2013 that little bit extra special with a private party, tailored exclusively to your budget.

Classic Party Nights

Join us for a fantastically festive three course meal followed by an evening disco.

QHOTELS

Book your place today! **01925 730706**
QHotels.co.uk/festive
The Park Royal, Stretton Road, Stretton, Warrington, WA4 4NS

Terms & conditions apply. Offers subject to availability.

Editor
Gary Skentelbery

Production
Paul Walker

Account Executives
James Balme
Nick White
Tony Record

Advertising
Freephone
0800 955 5247

Editorial
01925 623632

Email
info@warrington-
worldwide.co.uk

Websites
www.culchethlife.com
www.frodshamlife.co.uk
www.lymmlife.co.uk
www.village-life.co.uk
www.warrington.tv
www.warrington-
worldwide.co.uk

Address
New Media Centre
Old Road, Warrington
Cheshire WA4 1AT

Distribution
Village Life is distributed freely
to selected homes throughout
the area as well as being
available to pick up from various
outlets, some of which are listed
below.

Appleton:
Village Hall, Co-op
Grappenhall:
Co-op, Community Centre
High Legh:
Garden Centre,
Village Hall
Knutsford:
Fryers Garden Centre,
Library, Heritage Centre,
Shaw Heath Social Club,
Mr Chips
Lower Walton:
Spar Shop
Mere:
Village Store,
Parish Club
Mobberley:
Rajar Building
The Victory Hall
Stockton Heath:
Co-op, Library
Stretton:
Beehive Stores
Stretton Newsagents
Thelwall:
Post Office

*Village Life is published monthly by
Orbit News Ltd.*

*The contents of this magazine are
fully protected by copyright and
may not be reprinted or reproduced
without prior permission of the
publishers.*

*The publishers are not liable for any
statement made or opinion expressed
by third parties in this publication.*

Printed by TwentyFourSeven

Opinion

TOO many people seem prepared to leave litter in our streets, parks and other public areas. But perhaps more importantly, too many people are prepared to turn a blind eye to the problem.

People seem far too ready to tolerate filthy, litter-strewn places – even those who would not dream of dropping litter themselves. They walk over discarded food wrappers, empty cans and bottles and, of course, cigarette ends and chewing gum, without apparently even noticing them. Seldom do they think of picking up the offending items – and never ever would they consider confronting the culprits.

So it is particularly pleasing to be able to report that upwards of 20 volunteers turned out to pick up litter in Stockton Heath's Alexandra Park – and to learn that it was not the first, nor indeed the last, occasion that these people have shown such community spirit.

The operation was organised by two church groups and this, perhaps

inevitably, led to jibes about “do-gooders.”

But what is wrong with doing good? Particularly if it results in clean and pleasant communities.

Councils should be taking the lead in the war on litterbugs. Occasionally, they do mount campaigns, but it seems to us they are largely ineffective.

So all praise to the church groups, or anyone else prepared to go out and pick up someone else's rubbish without expecting any reward.

WHO do we believe when we read differing accounts of a council's financial management?

According to the opposition Labour Group, a report into the financial affairs of Cheshire East Council is highly critical of the stewardship of the authority.

But according to the controlling Conservative Group, the same report actually praises the authority for its financial management.

Well, it's an argument we would not wish to get into because we know how easy it is to pick a few pieces from a 70-page report and suggest they offer proof of whatever argument we wish to support.

We note that Cllr Peter Raynes, lead member for finance, asserts that the council is prioritising spending where residents want it to be spent – on repairing more than 54,000 potholes and resurfacing more than 60 miles of roads. We would certainly not try to argue that this was not money well spent.

But we would hope the council continues to take residents' wishes into account when considering future spending. We would have serious doubts about whether spending £1.5 million on “infrastructure” to support a theme park inside Tatton Park, or loaning £5 million to help build the theme park would go down too well with residents.

New treats for animals at Walton Hall Gardens



ANIMALS in the Children's Zoo at Walton Hall Gardens are enjoying having some apple trees in their enclosures, thanks to Bents Garden Centre.

Bents, in Glazebury, donated the fruit trees to help furnish the canary aviary, providing roosting spaces for the birds, which will enjoy perching on real trees and hiding amongst the branches.

Having a real tree in the enclosure will also allow the red squirrels to behave more naturally.

Ranger Liz Rowlands said: “We really appreciate the donation of these trees as fruit trees are quite expensive, it will allow us to see if the animals enjoy and use the tree's before we decide whether to invest in more in the future.”

The trees are only small at the

■ Ranger Liz Rowlands at Bents Garden Centre.

moment but will grow to fit the enclosures over the years and the rangers can shape the trees to provide lots of perches. The rabbits and guinea pigs in the zoo are also looking forward to eating the apples next year.

Formby's former home flying the flag!

THE former Stockton Heath home of ukulele playing film star legend George Formby has been officially recognised with a specially commissioned blue plaque.

Members of the George Formby Society, who were joined by Formby's niece, Geraldine Smith who unveiled the commemorative plaque, gave a unique fanfare befitting their idol.

The event marked the official opening of a new hotel at the Hillcrest property on London Road and was also part of a wider aim to regain Stockton Heath's Purple Flag status.

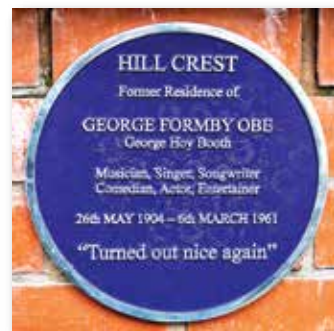
Formby Jnr moved to Stockton Heath with his dad George Snr, mother Eliza and six siblings when he was young and followed in his dad's footsteps on the music hall stage.

It was from the property on London Road where he launched his career in the entertainment industry after first trying his hand as a jockey at the age of 10.

Helen Curwen, from Stockton Heath Purple Flag Committee, said: "The plaque is a way for Stockton Heath to help commemorate the village's culture.

"As part of our Purple Flag bid we have to demonstrate the village's vibrant culture and with schemes such as the purple flag project and marking the history of one of our most famous former residents we can do just that to judges."

Meanwhile the former Formby property has been converted into the Amado boutique hotel.



■ Town Crier Peter Powell declares the hotel open.

■ Geraldine Smith (left) with members of the George Formby Society at the official opening.

Library to stage arts festival

VOLUNTEERS at Grappenhall Community Library are excited to be playing their part in bringing the Warrington Contemporary Arts Festival to South Warrington.

The Warrington Art Group will be exhibiting in Grappenhall Community Library, in Albert Road until Thursday, November 21.

Prints can be purchased, contributing to library funds, and also, with a loaded programme of resident artists on week days including Aleks Partington, Donna Fadden, Margaret Hodgson and Gwen Croker.

There will be themed craft activities for 3-7 year olds, while their parents or carers can enjoy a hot drink and a snack in the recently opened new kitchen area.

Tony Smith from Grappenhall Community Library said: "All of our volunteers are really excited being part of this local festival and we welcome everyone in Warrington to come and take part and celebrate all the artist talent in our area."

For more information visit www.grappenhall.org.uk or 07003-901098 or from volunteers during usual opening hours.

Advertiser's announcement

Flavour of Jersey

Jersey is 100 miles south of Britain, 14 miles from France and consists of 45 square miles with over 350 miles of road and country lanes.

Jersey is accessible from regional airports, or fast sea cat from south coast taking approx 3hrs 30 mins. There are many hotels ranging from 5* down to 2* plus apartments, cottages, guest houses and self catering lodges. There is a network of approx 50 miles of 'Green Lane' where maximum speed is 15 mph as priority is given to walkers, cyclists and horse riders. Jersey has a mild humid temperate climate with warm summers.

This island is an ideal destination for a short break from the UK. St Helier has wide variety of shops and boutiques with some good tax concessions as many goods are cheaper than in the UK. One of the main events in Jersey is the Battle of the Flowers-Battle Day Parade was 8th August this year, and combined with Battle Moonlight Paradem Funtasia Funfair and Jersey International Food Fair; makes the beginning of August a lovely time to visit Jersey.

Jersey is an excellent destination for everyone; particularly sport enthusiasts looking for an active year round holiday. It attracts cyclists, Harley Davidson tours and rides, wind surfers, waterskiers, scuba divers, horse riding, tennis, lawn bowls, croquet, clay pigeon shooting, fishing guided walks etc. Try two wheeled self balancing Segway at the Segway Rally at Les Mielles Fun Zone - here you can also experience Spaceball Gyroscope, dolphin and seal watching, bungee trampoline, laser clay pigeon shooting etc. There is an 18 hole championship golf course in St Ouen's Bay, if you don't want to take

your own clubs you can hire standard or premier clubs and either a golf buggy or a pull cart.

Take time to visit any of the following:- Jersey War Tunnels, Jersey Zoo, Jersey's Living Legend Village, Durrell Wildlife Conservation Trust, Elizabeth Castle, Jersey Museum & Art Gallery, Mont Ogueil Castle, The Waterfront Centre at St Helier, La Mare Wine Estate, La Hougue Bie, Steam Motor & General Museum, Hamptonne Country Life Museum, Occupation Tapestry Gallery, The Gardens of Samares Manor-take time out to relax with afternoon tea in their Herb Garden Cafe (for the children they do a Family Nature Trail Quiz), Jersey Lavender Farm, Reg's Garden, Judith Queeres Garden, Eric Young Orchid Foundation, Howard Davis Park etc.

Just want to relax then take advantage of the spas which are available at some of the larger hotels and spend the day on the beach or by



Keep the village alive support your local traders!



■ Linda Crowder – Stockton Heath Travel

the pool In the evenings there are concerts, events, theatre, shows etc. Day trips are available to Guernsey, St Malo, Alderney and Sark Or for the ladies shopping, lunch and afternoon teas - remember Jersey is famous for pearls! There is an abundance of restaurants serving international cuisine, the staff at the hotels can always recommend and book a table for you. If you require any further information or a quote for a short break or weeks stay please either email enquiries@stocktonheathtravel.com or call 01925 269400

Follow us on twitter @stocktonhthtvl or like us on facebook and linkedin

STOCKTON HEATH TRAVEL

Special Offers

JERSEY

25th November 2013

4* Hotel

Direct flights from Manchester
3 nights B&B
based on 2 sharing a room
from £283.50 per person

25th November 2013

5* Hotel

Direct flights from Manchester
3 nights B&B
based on 2 sharing a room
from £326 per person

7th December 2013

4* Hotel

Direct flights from Manchester
7 nights B&B
based on 2 sharing a room
from £508 per person
(including luggage allowance)

Stockton Heath Travel Centre

01925 269400

80 London Road
Stockton Heath

enquiries@stocktonheathtravel.com

Replacement Conservatory Roofs

Helps to make your conservatory cooler in summer - warmer in winter cuts rain noise - cuts sun glare

Are these problems spoiling the enjoyment of your conservatory?

- It often gets too hot... and too cold
- It's really noisy when it rains
- You can't see the TV or PC screen properly

A Replacement Conservatory Roof will solve these problems!

- Suitable for all conservatories
- Requires no planning permission
- Choice of styles
- 2 different types of roof
- Use your conservatory all year round
- Beautiful interior finishes and lighting

CALL FOR FREE SURVEY & QUOTATION

your CHOICE
your home your choice

Thermotec Sole UK Licensed Installer

0800 169 48 22
www.your-choice.uk.com

BUY NOW - PAY NOTHING for 12 months. Written details on request



Quality Solicitors
Forshaw Davies Ridgway

Moving house shouldn't be an uphill task

Our conveyancing experts are dedicated to making your move as smooth, quick and hassle-free as possible.

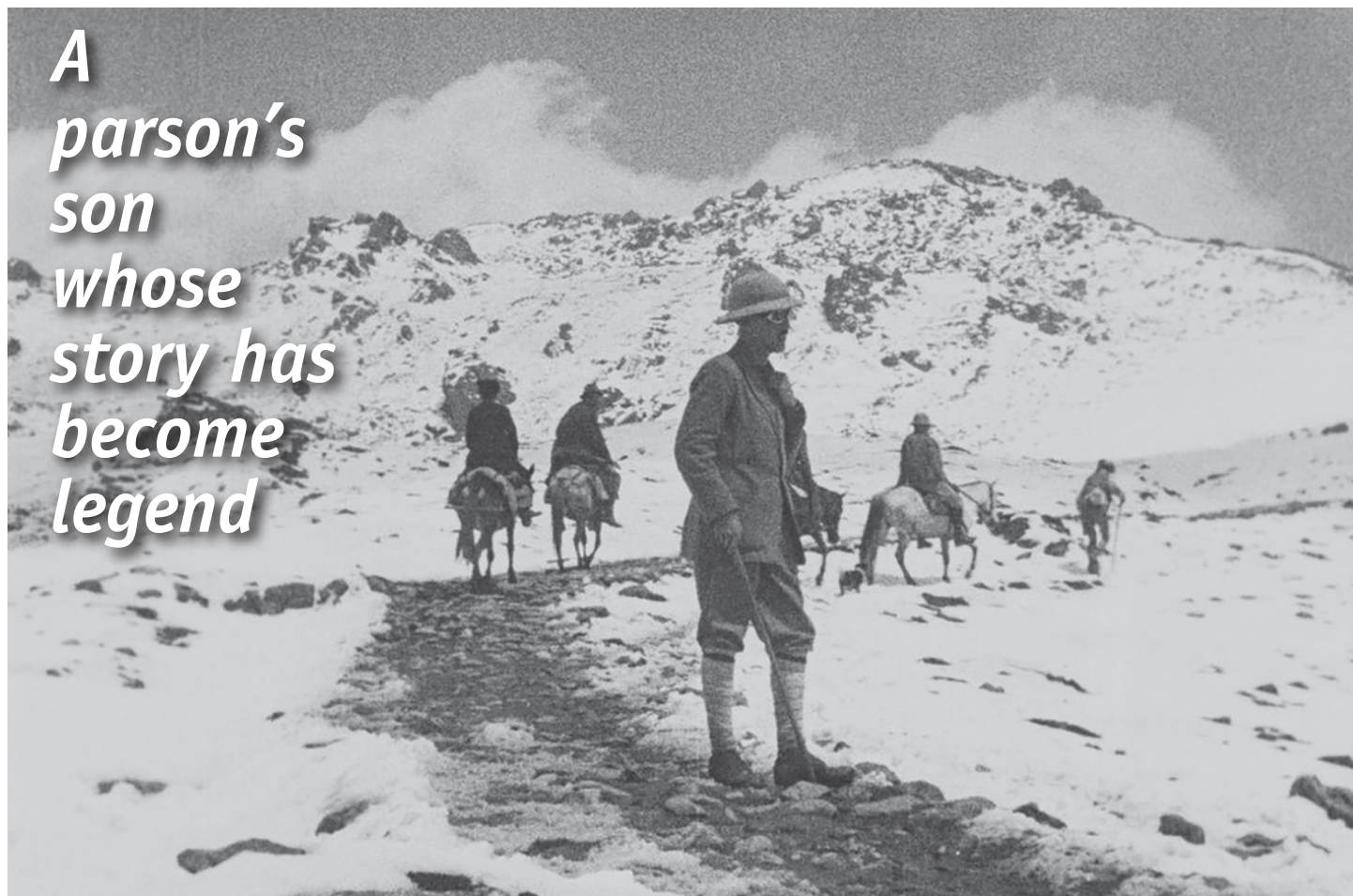
Frodsham | 01928 739 300

Stockton Heath | 01925 604 713

Warrington | 01925 230 000

qualitysolicitors.com/fdr

A parson's son whose story has become legend



HE was born the son of a country parson but his story is one of the great, unsolved mysteries of mountaineering.

Were George Mallory and his friend Andrew Irvine the first men to climb Mount Everest back in 1924, only to die as they attempted to descend from the world's highest mountain?

Or did they perish on the icy, upper slopes of the mountain before reaching the summit?

The answer to the mystery may never be known - but their story is told in "The Epic of Everest", the British Film Institute's newly-restored official film of the legendary expedition which had its world

premiere at the 57th British Film Institute (BFI) London Film Festival.

Mallory was born at Hobcroft House, Mobberley in 1886. He died on Everest in 1924 when he was 37.

A memorial window at St Wilfrid's Church, Mobberley, where his father was rector, bears the inscription: "...in the flower of his perfect manhood he was lost to human sight between Earth and Heaven on the topmost peak of Mount Everest."

In fact, Mallory and Irvine - also a Cheshire man - were last seen about 800 ft from the summit.

Mallory's frozen body was found in 1999 and Irvine's has never been found.

There was no clue as to whether

they had reached the summit before dying - other than the fact that Mallory was known to be carrying a photograph of his wife which he intended placing on the summit.

When his body was found 75 years later, he did not have the photograph.

The film has a remarkable new musical score, composed by Simon Fisher Turner and featuring electronic music, western and Nepalese instruments and vocals.

Robin Baker, head curator, BFI National Archive said: "This is one of our greatest treasures. It represents a key moment in the history of mountaineering and remains an enduring monument to Mallory and Irvine.

"This film is a precious record of endurance and is a powerful piece of cinema now beautifully restored to show how Everest was so nearly conquered.

"It is highly appropriate to present the film now, just 60 years since Everest was finally conquered by a British expedition and one hundred years since Captain John Noel, the film's director, first set eyes on the mountain itself."

Filming in brutally harsh conditions with a specially adapted camera, Captain Noel captured images of breath-taking beauty and considerable historic significance.

The film is also among the earliest filmed records of life in Tibet.



Hotel hosts kids at work day

MORE than 20 children of employees enjoyed a "kids at work day" at The Park Royal Hotel, Stretton.

The day involved youngsters arriving at work with their parents at 9am and then attending the normal morning meeting to see first hand the normal day to day running of hotel.

The youngsters then made plaques for their bedroom doors before a conference buffet break with parents.

After lunch they made cookies with chef followed by games in the Leisure Club.

Then it was back to the restaurant to eat baked biscuits followed by home time!



INVESTMENTS

At Simple Solutions we construct model portfolios for our client's investments. Funds are selected from a wide range of global Investment Companies. The performance of these portfolios speaks for itself.

Our Investment expertise will ensure that you have the most suitable investment to help you achieve your financial goals.

We use:

- Asset Allocation
- Risk Profiling
- Diversification
- Correlation

PENSIONS

Are you disappointed with

- Poor Investment Returns
- Low annuity Rates
- Constant interference with Government Legislation
- Lack of flexibility

Unless you can live on the state pension, then all of these points are not an option. It needn't all be bad news, speak to us at Simple Solutions about your options.

TECHNOLOGY

Simple Solutions uses the latest technology to keep you updated, even when you are on the move or abroad, check out our website for more details.



**FREE
24 HR
REVIEW**



Visit simplesolutionsifa.com or scan this QR code and fill in form

1st Floor, 67 London Road
Stockton Heath, Warrington
WA4 6SG

Tel: 01925 266628
Fax: 01925 267043





'Tis the season to be (st)rutting!

Visitors to the parkland will be able to witness the deer rut until the end of November – but should not approach or disturb the deer.

It's a highly competitive time for the 400 Red and Fallow deer who roam freely within the 1,000 acres of parkland with many antler-clashing battles between the males.

Tatton has been a deer park for more than 700 years, but the spectacle is as great as ever.

Park manager Phil Lucas said: "You cannot fail to be impressed by the sheer power

and beauty of two stags in battle as muscle and antler is used to the utmost to prove the superior strength, experience and determination, before one roars in magnificent victory at his fleeing opponent."

Males begin to roar and "parallel walk" to intimidate rivals and to attract the mature females.

They also have some more subtle techniques, such as urinating and wallowing in mud hollows. The pungent scent is – apparently – very attractive to the females!



Breakfast with Santa

Add an extra 'WOW' to Christmas

Enjoy a festive breakfast with Santa this Christmas. There will be plenty of festive fun and laughter including a Winter Sleigh Ride, Magic Reindeer food and each child will receive a gift from Santa.

Breakfast with Santa dates

Saturdays 14th & 21st December starts 9.30am

Sundays 15th & 22nd December, Monday 23rd & Tuesday 24th December starts 10am

£8.95 per child, Bookings only

High Legh Garden Centre

High Legh • Knutsford • 01925 756991

Mariam takes gap year after A* success

THE small size, community spirit and friendly atmosphere at Withington Girls School went along way to helping Mariam Aly, from Warrington, clinch an A* in Maths and A grades in Chemistry and Biology.



Withington, enjoy the "work hard, play hard" ethos and praise the variety and breadth of extra curricular opportunities available at the school.

Although consistently celebrating exceptional academic results – with 94% this year achieving A* to B grades at A Level and 99.5% A* to B at GCSE – girls reported that they enjoy a wide variety of activities. From music and the arts, dance and drama to sports; subject-related clubs; fashion; enterprise; debating; a show jumping team; even a pets' club; community volunteering; a wide variety of school trips both at home and overseas and much more on offer, Withington's students agreed they are spoilt for choice.

She is now taking a gap year and hopes to study Medicine.

"I really enjoyed the vast range of extracurricular activities and tried to take full advantage of them when possible, including photography club, Duke of Edinburgh, Young Enterprise and religious societies," said Mariam.

"During my eight years at Withington I was able to succeed academically but I was also continuously encouraged to flourish as a person. I have gained many important life lessons due to the ongoing support I received from not only my peers but also the staff. The tight knit community at the school was really beneficial to me, I was always able to seek help and advice when needed with my studies as well as support and motivation from my friends. What I will remember most about Withington is how much I was helped as an individual and received guidance catered to my own personal needs," she added.

Withington Girls' School's small size, community spirit and friendly atmosphere combined with inspirational teaching and a balanced approach to education were amongst the qualities most rated by pupils in a recent survey.

According to research questionnaires completed by this year's Sixth Form leavers, students celebrate the caring and supportive environment experienced during their time at

Headmistress Sue Marks is delighted at the recent research results and says that girls are nurtured and motivated to achieve their full potential both inside and outside the classroom, preparing them for their University years and their future lives. Students from Withington go on to study at the country's top universities, with 12 this year heading to Oxford or Cambridge, as well as other leading destinations – but, says Mrs Marks, they are also encouraged to develop their talents, follow their passions and "dare to dream".

New students from state and independent schools are welcomed annually into the school. Open Days for Junior and Senior School entry are on Thursday 7th November 4.30pm to 6.30pm and 9th November 10am to 12 noon.

"The roots of true achievement lie in the will to become the best that you can become"

Harold Taylor



**OPEN DAYS
2013**

Junior & Senior School

For girls aged 7-11 & 11-16
Thursday 7th November 4.30pm to 6.30pm
Saturday 9th November 10am to 12noon

Sixth Form

For girls aged 16+
Tuesday 15th October
6.00 to 8.00pm

Means-
tested
bursaries
available
from
Year 7



Withington
GIRLS' SCHOOL

Find out more by calling 0161 224 1077
Wellington Road, Fallowfield, Manchester M14 6BL

wgs.org



Lymm High School

An Independent State School

Lymm High School
Oughttrington Lane
Lymm
Warrington
WA13 0RB
Tel: 01925 755458
Email: info@lymmhigh.org.uk

Lymm High School welcomes you to their

Sixth Form

Open Evening

6th November 2013

at 6pm

Be part of a fantastic sixth form with outstanding facilities, caring teachers, and a wide range of enrichment activities.

**For further details contact
Sixth Form
Student Services
on 01925 755458
Ext. 132**



Provided by:
WatkinsonBlack
Chartered Accountants



**Chartered
Accountants**

**Registered
Auditors**

Contact
David Watkinson
or **Margaret Black**
at:

1st Floor,
264 Manchester Rd
Warrington

Tel:
01925
413210

or email:
info@warrington
accountants.co.uk
www.watkinson
black.co.uk

Money Column

By Margaret Black

Remuneration of Directors

It has been a long established practice for company directors to be remunerated with a small salary and, where after tax profits allow, receive a monthly dividend. This method may be a tax efficient method for profitable companies, however, it may not be if the company is struggling to make profits.

It has been reported that there are at least 150,000 business's which are only able to meet their interest charges and are not able to reduce their debt. If this situation exists whilst interest rates are low it may very well mean that if the interest rates increase that these companies will more than likely fail. The owners of these business's have no means of escape and are subsequently obliged to continue to trade whilst this situation is forced upon them.

If you do have a company that is only just existing rather than flourishing then you may wish to review how you and/or any other directors are remunerated. As very often happens, the payment of regular dividends in the expectation of profits causes the directors loan account to become overdrawn when the profits are not there. With the introduction of RTI (Real Time Information) the flexibility of reconsidering and adjusting the methods

of remuneration for directors on an annual basis has now been removed. If your company is only marginally profitable it may be more favourable to take all remuneration as salary thus subject to PAYE, whilst this may be more costly from a cashflow point of view it may be the cheaper option from the director's standpoint.

If for instance a company enters a formal insolvency procedure and the final balance sheet shows an overdrawn directors loan account and not enough profit has been made to allow a dividend to cover the amount overdrawn then the director(s) of the company will be requested to repay the amounts individually overdrawn, which of course in reality these sums have been regarded as part of the salary during the year, unfortunately, the argument that the dividends were in effect salary will not be accepted. At the time that the company fails personal guarantees will be called and there is no income, the director(s) now faces the likelihood of repaying his overdrawn loan account. This normally comes as a complete surprise to the director(s), the "other debtors" figure in the annual accounts has never truly been understood and they have usually failed to recognise that this figure actually relates to them.

It does appear that RTI has worked



and it is widely believed that it is only a matter of time before HMRC will use the new system to collect PAYE/NIC more efficiently and the informal extended credit previously employed as a matter of necessity will come to an end. Those companies who are already struggling will suffer increased cashflow pressure due to HMRC's collection procedures, which means that as the odds of survival declines it is even more important that directors pay is dealt with correctly.

The idea of having to wind up a business is never pleasant, however, steps need to be taken to ensure that the impact of this does not have too great a personal financial effect on the director(s) just because they failed to consider the method of remuneration.

Please telephone 01925 413210 or e-mail info@warringtonaccountants.co.uk

The Money Column.....is provided by **WatkinsonBlack**. Chartered Accountants,
1st Floor, 264 Manchester Road,
Warrington, WA1 3RB.

Accountants who care, for clients who matter.

WatkinsonBlack

Accountants who care for Clients who matter



Indish

BAR, RESTAURANT & TAKEAWAY

OPEN 7 DAYS A WEEK



Christmas Bookings Now Being Taken

Indian or Traditional Christmas Day Dinner - 1pm-6pm
£25.95 adults £14.95 children under 12

25% OFF
Mon-Sat on orders
before 6pm

25% OFF
Sunday
4pm-10pm

Tel: 01925 861 919 / 861 818

Email: indishindian@live.com Web: indishindian.co.uk
33 Walton Road | Stockton Heath | Warrington | WA4 6NJ



WE WANT YOUR GOLD & SILVER FOR INSTANT CASH!

Did you know...?

We accept silver jewellery, cutlery, tea sets, spoons, cigarette cases, candlesticks, trophies, trays, medals, coins and pocket watches.

ALL ITEMS OF JEWELLERY ACCEPTED

GOLD & SILVER BULLION DEALER

Open: Tuesday-Saturday: 10am - 5.30pm

1 London Road, Stockton Heath (First floor entrance on Fairfield Road)
07544 486 621

minikids
PRAM SHOWROOM
PRAMS • ACCESSORIES • LEARNING AIDS

FREE newborn photoshoot for every purchase over £500

Mon-Fri 10am - 5.30pm
Sat 10am - 5pm Sun 11am - 5pm

LARGE CAR PARK



Tel: 01925 418314 • Website: www.minikids.co.uk

Email: sales@minikids.co.uk

Unit 3 • Priestley Street (off Froghall Lane) Warrington • WA5 1TF

Stockists of:
**ICANDY • UPPABABY
EMMAJUNGA • QUINNY
BABY JOGGER
MACLAREN & MORE...**

Repair scratches and scuffs before they rust!

ChipsAway

Scratches and scuffs won't dent your pocket

Professional quality, mobile paintwork repairs at a fraction of traditional body shop costs

- Lease car going back?
- Repair completed same day
- Convenient
- We come to you

To arrange for your free estimate call **Tommy Murphy**
07455 503186
REPAIRS FULLY GUARANTEED

✓ BUMPER SCUFFS

✓ PAINTWORK SCRATCHES

✓ KERBED ALLOYS

✓ MINOR DENTS

Discover the difference

• SALE NOW ON •

T: 01925 245 855 | Unit 5 St Peter's Way
(off Orford Lane) Warrington • Cheshire • WA2 7BT
www.paulmartinfurniture.co.uk

THE NEW MEDIA CENTRE
OLD ROAD, WARRINGTON WA4 1AT
01925 240247
info@247print.net

twentyfour
seven
design & print ltd

10,000
A5
FULL COLOUR
£248.00
PAY FOR 1 SIDE
GET THE OTHER
SIDE PRINTED
FREE

500
FULL COLOUR
Digital Business Cards
(Buy 1 set, get 1 set free)
£35.00

60'X40'
FULL COLOUR POSTERS
ONLY **£12.00 EACH**

100
A3
£38.00
FULL COLOUR
POSTERS

*ALL PRICES ARE SUBJECT TO VAT

**ARE YOU
CONSIDERING
EXTENDING
OR RENOVATING?**

For a **FREE** consultation
please call **01925 730888**
info@urbanbuildingprojects.co.uk
www.urbanbuildingprojects.co.uk

410 Europa Boulevard, Gemini Business Park, Warrington WA5 7TR

New members join the team

A NEW member has joined the team at Cheshire Natural Health in Stretton to provide hypnotherapy and psychotherapy services.

Katherine Leather is also an experienced EFT, CBT and NLP practitioner offering clients an integrated approach and tailored support packages.

A personal and relaxing environment where clients can have time-out from their lives to invest in themselves. Solution focused therapy is provided to support a wide range of life challenges and psychological issues such as stopping smoking, weight loss, stress management, fertility issues, hypnobirthing, phobias and many more.

Blending conventional and alternative approaches, a variety of techniques are used to incorporate what will be most helpful for each client.

A personable approach helps clients' build on their strengths in order to identify and achieve their life goals.

Katherine has an Advanced Diploma in Hypno-Psychotherapy and practitioner level of EFT and NLP and CBT. The treatment approach focuses on providing support and feedback to help

clients resolve current concerns and long-standing patterns.

Katherine is registered with the General Hypnotherapy Register. For further information see www.equipoiselife.com, email enquiry@equipoiselife.com or call 08000 612 848.

She offers a free 15 minute consultation to discuss how her therapeutic approach can help to empower you to get back in the driving seat in life!

Meanwhile Cheshire Natural Health also welcome a new osteopath to their team of professional therapists.

John Corfield gained his Master's of Osteopathy (M.Ost) at Leeds Metropolitan University and is experienced in treating a wide range of musculoskeletal problems. He has enjoyed treating a variety of patients, including his regular patient celebrity chef Dean Harper, professional boxers, tri-athletes and musicians, to those patients with more serious conditions including cerebral palsy.

John ran his own business for 9 years. The job required him to be physically fit and for most of his life he has been heavily into fitness mainly through boxing and wrestling. It was whilst wrestling that he suffered a disc herniation. After a lengthy period of being in pain and being repeatedly mis-diagnosed, John started reading anatomy books as a way of understanding what was happening.

It was suggested he go to see an osteopath and the treatment was able to relieve the symptoms enabling him to become more mobile and get back to his previous fitness level.

He was so fascinated and impressed by Osteopathy that he took the life-changing decision to embark on a four year Masters Degree course in Osteopathy at Leeds Metropolitan University. With three young children and the daily commute to Leeds it was a challenging four years for John, but he is passionate about Osteopathy and its benefits and he looks forward to sharing his knowledge and dedication.



High quality care at reasonable prices

Grappenhall
DENTAL PRACTICE

Independent private practice

Private dentistry at NHS prices (conditions apply)

Now taking new clients due to expansion after 7 successful years

Easy parking/groundfloor easy access including wheelchair

State of the art equipment / highest standards of cleanliness / cross infection control

Emergencies seen same day / no waiting lists
Late night opening Tuesdays until 8pm

Dr Andrew Brown and Dr Andrew Booth
welcome new patients

Tel: 01925 210977 or 01925 481341
148 Knutsford Road, Grappenhall, Warrington WA4 2PW
www.dentistswarrington.co.uk



CHESHIRE
Natural
Health

**Hypnotherapy
& Psychotherapy**

with Katherine Leather DSHP, Adv. IHPC

- Smoking cessation
- Weight loss (including virtual gastric band)
- Stress Management
- Fertility Support
- Hypno-Birthing
- Phobias

Katherine is committed to helping clients find solutions to a wide range of challenges and psychological issues.

Tel: 01925 730123

Email: info@cheshirenaturalhealth.co.uk
www.cheshirenaturalhealth.co.uk | www.equipoiselife.com

Beehive House, Tarporley Road, Stretton, Warrington



CHESHIRE
Natural
Health

Osteopathy

with John Corfield M.Ost

- Spinal pain and disc problems
- Joint pain
- Trapped nerves
- Headaches
- Postural Problems
- Repetitive Strain Injuries
- Sports Injuries

Appointments available daytime, late nights and Saturdays

Tel: 01925 730123

Email: info@cheshirenaturalhealth.co.uk
www.cheshirenaturalhealth.co.uk

Beehive House, Tarporley Road, Stretton, Warrington

What's on in the villages

November 12
STOCKTON HEATH PARISH COUNCIL
Sandy Lane Centre, Stockton Heath. 7.30pm

November 19
APPLETON PARISH COUNCIL
Parish Hall, Dudlow Green Road. 7.30pm

November 21
GRAPPENHALL & THELWALL PARISH COUNCIL
Council Offices, Bellhouse Lane. 7.30pm

LIVE AT ST WILFRID'S
Manchester Camerata Brass Ensemble: "Spirit and Adventure" – works by Mozart, Robert Steadman and Jim Parker.
St Wilfrid's Church, Grappenhall. 7.30pm

Every Monday
ST MARY MAGDALENE MONDAY CLUB
St Mary Magdalene Church, Appleton 1.30pm

COUNTRY DANCING CLUB
St Thomas' Primary School, Parkgate Road, Stockton Heath. 8-10pm. Details: 01925 262356

BRIDGE CLUB
Grappenhall Village Sports Club
Stockton Lane. 7.30pm. Details 01928 712233

LADIES' FRIENDSHIP CLUB
The Quays Community Centre, Thelwall New Road, Thelwall. 8pm. Details: 01925 264099

HIGH LEGH RUBBER BRIDGE CLUB
Village Hall, 7-10pm. Details: Audrey Greaves 0161 904 0120. 8pm. Details: 01925 264099

Every second Monday
PARK (APPLETON) WI
Appleton Parish Hall, Dudlow Green Road. 7.30pm

Second and fourth Monday
WARRINGTON ART GROUP
Bellhouse Community Centre, Bellhouse Lane, Grappenhall. 7-9pm.

Every third Monday
NATIONAL VEGETABLE SOCIETY
Cheshire District meeting
Grappenhall Ex-Servicemen's Club, Chester Road, Grappenhall. 8pm. Details: 01925 265773.

Every fourth Monday
MARLFELD WI
Independent Methodist Chapel, Knutsford Road, Grappenhall. 7.30pm

Every Tuesday
COFFEE MORNING
St Cross Church, Appleton Thorn. All welcome. 10am-12 noon

PHOTOGRAPHIC SOCIETY
Quays Community Centre, Thelwall New Road, Thelwall. 7.30pm.
Contact: 01925 757582.

COFFEE MORNING
Appleton Independent Methodist Church
Appleton Parish Hall, 10am-12 noon

Every Wednesday
APPLETON HALL BADMINTON CLUB
September – March at Hall Drive, Appleton. 7.30-10pm. Details: 01925 262356

Every first Wednesday
Walton WI
St John's Church Community Hall. 7.30pm

First and third Wednesday each month
NATIONAL ASSOCIATION OF WOMEN'S CLUBS
Sandy Lane Centre, Stockton Heath. 8pm. Details: 01925 268311

STOCKTON HEATH PROBUS CLUB
Warrington Sports Club, Walton Lea Road, Higher Walton. Details: 01925 268540

Every third Wednesday
HIGHER WALTON WI, St John's Community Hall, 7.45pm. Details 01925 262001.

Every fourth Wednesday
ALZHEIMER'S SOCIETY
Support Group, Brampton Lodge Day Centre, Bridge Lane, Appleton. 6.30-8.30pm

Every Thursday
THE SILVER QUAYS Senior Citizen's Club
The Quays Community Centre, Thelwall New Road, Thelwall. Details: 01925 753474.

BRIDGE CLUB
Grappenhall Village Sports Club
Stockton Lane. 7.30pm. Details 01928 712233

Every second Thursday
STRETTON WI
Appleton Parish Hall, Dudlow Green Road. 2.30pm.

GRAPPENHALL PROBUS CLUB
Grappenhall Community Centre, Bellhouse Lane, 10am. Details: 01925 264427.

Every third Thursday
NORTH EAST CHESHIRE FLOWER CLUB
Appleton Parish Hall, Dudlow Green Road. 2pm
Details: 01925 740419

GRAPPENHALL WI
Grappenhall Community Centre, Bellhouse Lane 2.15pm

Every Friday
APPLETOTS TODDLER GROUP
Appleton Parish Hall, Dudlow Green Road. 9.45-11.30am. Details: 01925 268153.

To list your event call Village Life on
01925 623632



Volunteers aim to keep village green and pleasant

STOCKTON Heath is a green and pleasant place to live in – that's one of the reasons it was first village in England to receive the coveted Purple Flag.

But this doesn't mean it's free of people who think they can drop litter wherever they please, according to parish councillor Tudor Pole.

And this is why the parish council has said a big "thank you" to 20 volunteers who turned up to give Alexandra Park a spring clean in the autumn.

The event was organised by Jon and Becky Curtis from the local church groups known as The Hive and Life Church.

Cllr Pole said: "This wasn't the first litter pick they have done. They have been doing it for some time – but this was the biggest turn out so far."

Becky said: "We have got to know a lot of people while doing our litter picks and are thrilled so many volunteers turned up."

"It can also be a bit of a lot of fun. "But this is not the only thing we do. We also make cakes and deliver meals to the elderly and sick people in the community."

The two groups meet once a month at the Scout Hall in Parkgate Road and the meetings are open to all.

Becky added: "We want the people of the village to come and get to know one another and if they have a little spare time to volunteer to do useful things for the community".

Cllr Pole said: "I am impressed with



the commitment of these volunteers and their enthusiasm has not gone unnoticed by our borough and parish councils.

"The borough council swiftly organised the loan of litter picking tools and high visibility jackets and the parish council is looking into funding equipment for the groups on a more permanent basis."

Anyone wanting to join in should ring Becky and Jon on 01925 600843.

'Kindly leave the stage'

THE Bridgewater Players' next production at Thelwall Parish Hall is "Kindly leave the Stage" – a frothy comedy which pokes fun at theatrical people.

Laughs come thick and fast as a "play within a play" gets under way, with the characters – all supposed to be professional actors – get rather confused between real life and the plot of the play they are taking part in.

A talented cast has been lined up consisting of Richard Hawes, Andrew Cook, Elwyn Thomas, Ann Crawford, Helen Chapman, Cat Mercer, Laura Booth and Kelly Sergeant

The play is directed by Vonnice Rogers and the play runs from November 14-16.

On February 2, the curtain rises on the Bridgewater Players' annual pantomime "Help I'm a Celebrity Pantomime Dame Get Me Out of Here."

'A kindergarten Godfather'

DESCRIBED by one critic as "a kindergarten Godfather", Knutsford Little Theatre's next production should provide plenty of a laughs.

"The Flint Street Nativity", by Stockton Heath-born playwright Tim Firth, of "Calendar Girls" fame, will provide a pre-Christmas glimpse of what it's like putting together a school nativity play.

The main characters are 7-8 year-olds, all played by adults – and that alone is enough to ensure plenty of hilarity. But matters become more confusing and more hilarious when the adults then go on to play the parents.

The play has received considerable critical acclaim. It broke all records at the Liverpool Playhouse theatre a couple of years ago.

Another critical comment: "Exposes what an ungodly snake pit of paediatric power-politics the staging of your average Nativity play can be ... there are moments when you may wet yourself laughing."

The show goes on at the Queen Street theatre on November 6-9, curtain up at 7.30pm



Thelwall Upholstery

FOR THE MOST COMPETITIVE RATES IN THE AREA

49 Knutsford Road, Grappenhall WA4 2NR

Call Sean on: 01925 604770 or mobile: 07799 228080

www.upholsterywarrington.co.uk

For all your upholstery needs

SPECIALISTS IN:

- Re-filling Cushions • Re-springing • Full Re-upholster
- Dining Furniture • Headboards

A wide range of sample books to choose from
All at competitive rates

PHONE FOR YOUR FREE ESTIMATES



Bird and bat boxes

TWELVE bird and bat boxes have been placed at the Mill Lane QEII Jubilee Field, Stockton Heath, by the parish council.

The boxes were made by the members of the Walton Lea Project as part of a Life Long Learning woodwork course, with the help of their tutor, Simon Hardcastle.

Similar boxes were placed at nearby Ackers Pit last year and nearby residents have already reported seeing Pipistrelle bats in the area.

Autumn Fair

AN Autumn Fair is to be held for St Cross Church, Appleton Thorn, on Saturday, November 23 at 2pm.

The event, to be held at Appleton Thorn Village Hall will include stalls selling crafts, soft toys, cards, cakes and produce, books, toys and bric-a-brac.

There will also be tombola, a raffle and refreshments.

Church fayre

ST Matthew's Church Stretton are holding their annual church autumn fayre on Saturday November 9, starting at 2pm.

There will be a variety of stalls including cakes, produce, good as new, toys, books, tombola, two raffles and childrens activities.

Refreshments will also be available. Admission is £1 for adults and 50p for children.

CLASSIFIEDS

Call FREE 0800 955 5247 to advertise

ANTIQUE CLOCK REPAIRS

ANTIQUE CLOCK CARE & REPAIR throughout Cheshire and Lancashire. British Horological Institute award winning Horologist with 30 years experience. Collection, delivery and setting up. Home visits. Tel 01925 596109 (6/14)

BATHROOMS

The bathroom Refurbishment Co.

We can create the Bathroom of your dreams
One Warrington based Company
One Job from start to finish
Unique 3D virtual CAD design system

Please visit our website
www.bathroomrefurbishment.co.uk

Please Ring Wayne
01925 826 828 or 07976 574 828

BUILDING SERVICES

CHESHIRE BUILDING CONTRACTORS LTD. New build developments, Design and build, Barn conversions, Remodelling, Extensions and renovations. NHBC Reg Builder, NICEIC and Gas Safe registered. For a no obligation consultation please Call the office on 0161 928 1080 (6/13)

THE WALL BUILDING SERVICES, brick and block work, pointing, roofing, facias, soffits, joinery, windows, doors and plastering. No job too big or small. For free quote ring Gary on 01925 266646 or 0780 8169278 (11/14)

CARPET CLEANING

SIMPLY THE BEST CARPET CLEAN YOU WILL ever have. Cleaners UK Ltd. Est 22 yrs. Have your carpets & sofas beautifully deep cleaned leaving them fresh smelling & colour restored. Latest & best methods. Dry/steam. Professional, reliable & affordable. For more info call Neil Riley on 01925 264989/07831 336060 www.cleaners-uk.net (12/13)

CARPETS, CURTAINS & INTERIORS

CURTAINS AND VALANCES made to measure to your own choice of fabric. Home visits to advise, measure and estimate. Free fitting. Curtain alterations also undertaken. Tel: Catherine Langley on 01925 604400. www.catherine-makescurtains.co.uk (13/14)

CAR SALES

PARKVIEW CAR SALES

We buy and sell QUALITY CARS
Best price paid
Telephone Peter on 01925 575737 / 07957 545479

23 Padgate Lane
Padgate, Warrington
Cheshire, WA1 3RS (6/1)

CLEANING SERVICES

arleys angels

- De-cluttering/re-organising
- Presenting your home for Sale
- Moving house assistance
- Spring/After building work cleans

01925 266834
... because you're worth it!

DELIVERY SERVICES

FURNITURE FERRY LIGHT REMOVALS. Collections arranged from Ikea, Costco and other stores, garden centres, auctions etc. You choose, you buy, I deliver - SIMPLE. Reliable, inexpensive service. Tel: Matt 07970 178 333 or 01942 732768. www.furnitureferry.co.uk (16/14)

DOCUMENT STORAGE

FileRoom
DOCUMENT STORAGE

Box storage from less than a penny a day

Collection & delivery service

01925 732752
mail@thefileroom.co.uk
www.thefileroom.co.uk (6/14)

ELECTRICAL CONTRACTORS

TRUST PROPERTY ELECTRICAL SERVICES. NICEIC Part P Approved Contractor. All Electrical work undertaken. Inspection & testing & PAT testing. All work certified & guaranteed. Call Tim on 07754409906 or 01925 601055 (6/14)

GARDENING SERVICES

LAWN AND SPORTS GROUND DRAINAGE IN ONE day. No digging, no repairs. Providing for the larger grassed areas, picture and formal lawns. Contact Bob 07952 608701. 01925 266852. Vat Reg. (13/14)

GATES

COUNTY FENCING & GATES

All types of top quality fencing supplied & fitted.
Single and double gates
made to measure All work guaranteed

Call 01925 766 114 or 07852 265 627 (11/12/13)

Village Gates

SPECIAL OFFERS NOW ON
Manufacturers and installers of quality timber gates.
villagegates.co.uk
01925 766629 or Mob 07588 457145
Charnock Road, Culcheth WA3 5SH (17/14)

HOME SERVICES

ATLAS
Your friendly local independent

PEST CONTROL CHIMNEY SWEEPING

Affordable, professional, guaranteed service. Fully insured, fixed prices - no surprises once on site! Discrete vehicles, no embarrassing signs
07999 487 925 / 01925 445 222
www.atlas4u.co.uk (16/14)

HYPNOTHERAPY

MICHAEL MAHONEY clinical hypnotherapist for IBS, Stress, Anxiety and many other problems. Medical Research project experience, BUPA Service Provider. For FREE information sheet please email TimelineServices@aol.com or ring 01925 658322 www.healthyaudio.com (6/1)

KITCHENS

KITCHEN & BEDROOM, DESIGN, SUPPLY and fit or supply only. Full service with qualified tradesmen and 6 year insurance backed Guarantee, visit our showroom 4 Gorse Lane, Warrington, WA1 3PU, 01925 636997 or www.jdkitchens.co.uk (12/13)

QUALITY KITCHENS SUPPLIED AND FITTED by local experienced fitters. No job too small. If you have bought a kitchen we can fit it - or we can supply and fit full kitchen units including joinery work, plastering, electrics etc. All work is guaranteed. B&L Kitchen Installations. M 07935 267200 or 01925 451883 after 6pm. (6/1)

PEST CONTROL

prokill
professional pest prevention

- All pests covered
- No call out fee
- Same day response
- Competitive prices

Call Nigel Caves
T: 01925 571440 M: 07525 442564
www.prokill.co.uk (6/14)

PAYROLL

WHY TRY TO BE A PAYE EXPERT? Watkinson Black can provide a cost effective payroll service, releasing you to concentrate on your business. For further details please phone: 01925 413210 or e-mail: info@warringtonaccountants.co.uk (6/1)

PRINTING & EMBROIDERY

SPECIAL XMAS RANGE OF PERSONALISED embroidered baby gifts. Printed mugs and pennants. No minimum quantities. **Unsworths Emporium, 31 Irwell Road, off Gainsborough Rd.** Tel: 01925 638719 (11/13)

TILING

TLR TILING BESPOKE TILING SERVICE. All varieties of tiling covered including all preparation work. For free quotes and a bespoke service call mark 07841 053242 FREE TILE TREATMENT WORTH £120. (11/13)

TREE & HEDGE CUTTING

KENYON CUTTERS. Family business, fully insured and NPTC qualified, CSCS/ROLO assessed. Also tree and hedge supply and planting. All wood chipped or logged and recycled. Wood chip, logs and wood for chimineas now available. Contact Jayne or Steve on 01942 673910. Mobile: Ste 07973120309/Dan 07949847253 (11/13)

TUITION

AFFORDABLE TUITION with experienced "outstanding" teachers. Stockton Heath based Conexus Tuition: English and Maths, all key stages, small groups and 1-1 with excellent results. From £12.50 per hour. Tel 07970 145 153 www.conexustuition.co.uk (16/14)

Wickes

It's got our name on it.

Wickes Warrington
Unit B Pinners Brow Retail Park
Pinners Brow WA2 7XA
01925 632 263
www.wickes.co.uk

TUITION

PRIMARY TUITION: EXPERIENCED PRIMARY School Teacher available for private tuition. Numeracy and Literacy. Available after School and weekends. Call 01925 268627 or Mobile: 07843 607394 (6/1)

WINDOWS & GLAZING

NEIL COPELAND WINDOWS & Conservatories Ltd. Specialist in uPVC double glazing windows, doors, porches, conservatories, also fascias and guttering. FENSA registered. All work guaranteed. Tel: 01925 756138 / 07961 361550. (12/14)

SP GLAZING for all your glazing requirements, double glazed units including failed and misted units, broke windows, mirror fixing. Kite marked to B/S. Time served glazier with over 30 years experience. For a friendly no obligation quote tel Sam Pendlebury on 01942 671859. Mob 07919 660296. (24/14)

WHAT'S ON

Fantastic holiday club programme throughout all school holidays

(limited over Christmas)
from 8am-6pm with costs from as little as £6.50 a day
Activities include sports, dance, drama, arts, crafts and lots more!



To book your space contact
01925 581 226 or visit
www.warringtonyouthclub.co.uk

Guaranteed savings on Mobile
Save money - or get 'Double the Difference'



Value300 • 300 minutes • Unlimited texts 250MB Data Bundle • £2.50/month	£7.50	Value600 • 600 minutes • Unlimited texts 500MB Data Bundle • £2.50/month	£10
Value1200 • 1,200 minutes • Unlimited texts 1GB Data Bundle • £2.50/month	£12.50	ValueMax • Unlimited minutes • Unlimited texts 2GB Data Bundle • £2.50/month	£17.50



Find out more!
Village Life

0800 955 5247

info@warrington-worldwide.co.uk
www.utilitywarehouse.org.uk/orbit



Charges, terms and conditions apply. Prices shown are for 30 days only and carry no minimum term contract. A large range of leading brands is available for an additionally monthly charge, which depends on the brand chosen. For full details of the Utility Warehouse Double the Difference Price Promise, or to see mobile tariffs in full, see the Utility Warehouse website.

Make your kitchen sparkle again!

ORDER NOW & WE'LL FIT
IN TIME FOR CHRISTMAS

Have you always wanted the kitchen of your dreams, but can't quite justify paying the expensive price tag that comes with it?

Now you can by just swapping the doors and worktops.

- Huge choice of Doors, Worktops, Appliances, Sinks & Taps
- Trusted reputation
- Senior Citizens Discount
- From doors to complete kitchens
- Free Estimating and planning



DREAM DOORS®

Est.
1999

NEW LIFE FOR OLD KITCHENS

Call now for a Free Design quotation **01925 211308**

Visit our Showroom: 92 Knutsford Road,
Grappenhall, Warrington WA4 2PJ

Proud members of

Checkatrade.com
Where reputation matters

www.dreamdoors.co.uk

Find
us on

