

Lymm Life

Magazine

Over 26 years of free community news

ISSUE 324 | JULY 2026
DELIVERED FREE TO 5000 HOMES



urban

BUILDING PROJECTS LTD

Extension &
Building Renovation
Specialists

Tel: 01925 730888

www.urbanbuildingprojects.co.uk

Making history!

Centre pages



Lymm Eye Clinic

Local, professional eyecare
when you need it

No referral necessary,
book your appointment online

www.lymmeyeclinik.co.uk

Tel: 07498 456312
16A The Cross, Lymm



Family Law & Divorce
Residential Property
Commercial Property
Wills, Trusts & Probate

01925 359005

www.chambersfletcher.co.uk

Regular news updates at www.warrington-worldwide.co.uk

Editor's Opinion



Editor
Gary Skentelbery

Production
James Bryan

Advertising
James Balme
Telephone
01925 631592

Editorial
01925 623633

Email
info@lymmlife.co.uk

Websites
www.lymmlife.co.uk
www.culchethlife.com
www.frodshamlife.co.uk
www.warrington-worldwide.co.uk

Address
New Media Centre
Old Road Warrington
WA4 1AT

Lymm Life is published monthly by Orbit News Ltd.

The contents of this magazine are fully protected by copyright and nothing may be reprinted or reproduced without prior permission of the publishers.

The publishers are not liable for any statement made or opinion expressed by third parties in this publication.

Printed by TwentyFourSeven

Warrington Borough Council has reopened the Warrington Local Plan for a major overhaul.

Pushed by national mandate to increase housing targets to 1,067 homes annually, which Warrington hasn't been meeting, means town planners face a high-stakes dilemma.

They must find space for people while preserving the community identity. This problem is clear in places like Lymm, where development risks overrunning local character.

The updated blueprint aims to manage growth through structured site allocations. However, local people feel that the process is moving too fast. The council closed its first scoping consultation stage, but is now planning two more consultations.

Lymm is a historic semi-rural village, now to thanks to ongoing developments, the size of a small town, built around narrow lanes, old stone walls, and a distinctive landscape. Over the years, it has suffered from incremental expansion. Developers continue



to target the village's historic Green Belt boundaries. Large-scale building projects threaten to erase the open spaces that give Lymm its unique character. Developing green spaces destroys the vital gaps that keep the village distinct from the urban expansion of outer Warrington.

Building houses without adding infrastructure creates serious problems. Lymm lacks adequate public transport links, meaning new residents will have to rely on cars. The village's roads are already congested, and local services like GP surgeries and primary schools are full. Adding hundreds of houses will only strain these services further. The local plan prioritises building targets over the everyday needs of the community.

Warrington and Lymm needs new housing, especially affordable homes for young families.

However, the council should follow a "brownfield first" strategy to protect historic areas. Transforming old industrial sites preserves semi-rural character and places new homes near existing transport links. If the council ignores community concerns to meet housing targets, it risks changing Lymm further, permanently.

The Local Plan must focus on building sustainable communities rather than just meeting housing quotas.

Deadline for August issue is June 30

N & J STANHOPE Coal and Log Supplies

Smokeless Fuel • Kiln-dried Logs

Hay and Straw

Caravan Storage

Fresh Bacon and Eggs

Open 6 Days. Closed Sunday

**Broomedge Farm
Burford Lane, Lymm WA13 0SE**

**Tel: 01925 752830
Mobile: 07979 785 421**

Scan for all the latest news



SAVE £600 WITH A FREE OVEN & HOB

Available from 1st July to 30th September 2026.



DREAM DOORS®
NEW LIFE FOR OLD KITCHENS

- Up to 50% less than a new fully fitted kitchen
- Replacement kitchen doors
- Cost effective made to measure solution
- Quick installation in 2-3 days by local professionals

Checkatrade.com **9.7/10**
Where reputation matters

92 Knutsford Road,
Grappenhall,
Warrington, WA4 2PJ



Call us now for a free estimate:

01925 211308



MODERN

CLASSIC

TRADITIONAL

CONTEMPORARY

Terms and Conditions apply. Offer only applies to selected oven and hobs. Participating showrooms only.

DREAMDOORS.CO.UK

THE UK'S #1 KITCHEN MAKEOVER COMPANY

Veteran journalist publishes first novel to “redress the balance”

A NEW book by award-winning Lymm journalist David Skentelbery has just been released and is available from Amazon.

“The Heroism of Youth” is his first novel – his previous books have been autobiographical or for children - and it is set partly in Cheshire and partly in South Africa.

The title is taken from a speech by Nelson Mandela on his release after 27 years in prison.

Although a work of fiction, many of the events described really

happened and others could well have done so. The story tells of the lives and loves of two groups of young people, separated by thousands of miles but caught up in the lengthy worldwide campaign to end the racist apartheid system in South Africa, which is estimated to have led to some 7,000 political deaths between 1948 and 1989, as well as more than 19,000 cases of gross human rights violation.

Although it was probably worldwide economic pressures which eventually toppled the undemocratic South African government, sport – led by cricket – played a huge role by isolating South Africa from the rest of the

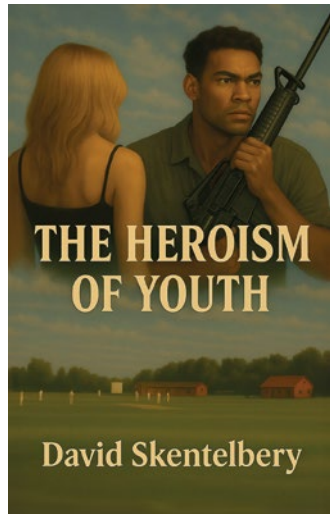
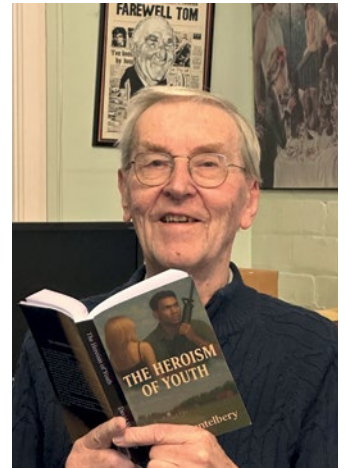
world.

In 1968, David Skentelbery was writing on current affairs and admits that he expressed views in print which he later realised were wrong.

He hopes his new book, as well as being an entertaining account of what it was like to be young in Britain and South Africa at that time, will redress the balance.

Away from fiction, in 2024 he was awarded the Honorary Freedom of the Borough of Warrington for his services to the borough through journalism.

A resident of Lymm, he is a former member of Lymm Oughtrington Park Cricket Club.



GMC Travel
Airports, Races, Days / Nights Out, Contract Work
1-8 Passengers
All Travel Needs Covered
Call, Text or WhatsApp
07787 675674

Trusted care and support in your own home
From **one-hour visits** through to **24/7 live-in care**
Our services include:

- Companionship
- Personal care
- Meal preparation
- Light housekeeping
- Outings and appointments
- Live-in care
- Medication reminders
- Holiday and respite cover
- Specialist dementia care
- Help with washing & dressing

01925 202576 info@rahlymm.co.uk
www.rightathome.co.uk/lymm-and-warrington-south

Right at Home
Quality Care in Your Home



Award-winning dementia friendly Care Home

Exceptional care & facilities - including sensory garden & full activities programme








Dementia Care • Residential Care • Respite • Daycare







www.keatehouse.com
Call: 01925 752091
Email: enquiries@keatehouse.com
9 Brookfield Road, Lymm, Cheshire WA13 0QL







What's On

LYMM PARISH COUNCIL
Next meeting Tuesday July 14th, 7:30pm
Lymm Parish Hall
Check www.lymmparishcouncil.gov.uk for details.

LYMM THURSDAY EVENING BRIDGE CLUB
Lymm Village Hall every Thursday 7pm
Details: 01925 919015

MAPLE LODGE ART GROUP
Meet each Wednesday 9.30am - 11.30pm
Oughtrington Community Centre, Lymm
Details: 01925 755926

ROTARY CLUB OF LYMM
Meets at Warburtons Parish Rooms on the 2nd and 4th Wednesday each month at 8pm
Contact 01925 919053

LOVING HEARTS & HANDS
Knitting for charity at Lymm Methodist Church, 2nd and 4th Thursday each month, 1.30pm - 3pm. Details: 01925 753298

LUNCH AT THE BROW
Eagle Brow Methodist Church
2nd Friday in the month
Light lunches 12 noon till 1.30pm.
All proceeds to The Y Project Room at The Inn

GARDENING CLUB
Meet Third Wednesday of the month
Lymm Baptist Church, Higher Lane. 7.30pm
Visitors welcome. £2 includes tea and cake

LYMM FLORAL ART GROUP
Lymm Village Hall
Third Monday of the month (except August and December) at 7.30pm. Visitors most welcome. Contact: 07876 176501
lymmfloralart.org.uk

LYMM PHOTOGRAPHIC SOCIETY
Every 2nd and 4th Wednesday (ex Aug), 7.30pm
Spread Eagle pub, Eagle Brow.
See our rolling display in Lymm Library
Details: www.lymmphotosoc.org.uk

LYMM HISTORY SOCIETY
Second Monday each month
September to May
Lymm Village Hall - 8pm-9pm
Variety of history talks
Visitors most welcome
www.lymmhistory.club

LYMM WINE AND BEER CIRCLE
3rd Wednesday of the month, 8pm
The Spread Eagle Hotel
Details: 01925 756444
LYMM CONCERT BAND
Rehearsals every Thursday evening
United Reformed Church, 8pm.
Details: 01925 752934

LYMM WI
Every second Wednesday, 2-4pm at Lymm Youth and Community Centre. Visitors welcome.

LYMM AND DISTRICT MIXED VOICE CHOIR
Every Wednesday 7.30 Lymm Methodist Church. Contact 01925 601664.
caih@cstones.co.uk

PROBUS CLUB OF LYMM
A small, friendly social club for retired men and women.
Meets on second and fourth Tuesdays at 2:15pm.
Details: www.LymmProbus.club

LYMM DINGLE PROBUS CLUB
A friendly busy social club for retired men. Meets on alternate Thursday afternoons at Lymm Baptist Church.
Details: www.lymmdingleprobus.club
Club secretary 01925 759995

FRIENDS OF LYMM LIBRARY CRAFT GROUP
Lymm Sanctuary Hub
Fridays 1.30-3.00pm
Details: 01925 754016

HEATLEY WI
Meets the second Thursday of each month at St Peters Church Hall, Sandy Ln, Lymm, 7pm
Visitors welcome. Details: 01925 752014

LYMM & THELWALL U3A
Speaker meeting 3rd Thursday of the month (excluding August & December) at Thelwall Parish Hall 10.00am. Prospective members welcome.
www.u3asites.org.uk/lymm-thelwall/home
Contact: enquiries@lymmthelwallu3a.org.uk

Tea with the King for Lymm RFC men

It's not every day you get invited for tea at Buckingham Palace with the King! But that is exactly what happened recently to the Chairman of Lymm Rugby Club, David Simpson and Lymm Panto producer, Simon Plumb.

Both were invited to a Royal Garden Party in the grounds of Buckingham Palace with King Charles III and Queen Camilla, in recognition of the rugby club receiving the Kings Award for Volunteer Service in 2025.

'We were representing the many hundreds of volunteers who work so hard at our rugby club,' commented David.

'The Kings Award is a huge honour for all that effort and we both felt very proud to be invited and represent all our colleagues,' he said.

On parade were the King's Body Guard of the Yeomen of the

Guard along with the Band of the Coldstream Guards and Royal Marines Band who entertained guests all afternoon.

The King and Queen were accompanied by the Duke and Duchess of Gloucester.

'It was quite a day out and our blazers caused quite a stir,' commented Simon, 'but we weren't alone. We were among 8k guests so did not quite manage to chat with the King and invite him to the Panto.'

'Perhaps I'll pop a couple of complimentary tickets in the post,' he added.





CHESHIRE GOLD XCHANGE

SELL YOUR GOLD & SILVER TODAY!

ITEMS WE BUY:

- Jewellery
- Bullion
- Coins
- Silverware
- Pocket Watches
- Watches
- Asian Gold

VISIT US:

3 London Road
Stockton Heath
Warrington
WA4 6SG

SELL IN-STORE & ONLINE

01925 387 107
CHESHIREGOLDXCHANGE.CO.UK

ESTHER MCVEY MP

Member of Parliament for Tatton

I hold regular constituency surgeries around the area.

To make an appointment please call **01625 529922** or email officeofesthermcveymp@parliament.uk

Promoted by Angela McPake on behalf of Esther McVey MP both of Windsor Court, 103 King Street, Knutsford, Cheshire WA16 6EQ. Funded through the allowances made available to the Member of Parliament.



G P BROADSMITH & SON

DELICIOUS MILK DELIVERED TO YOUR DOOR!

POOL FARM, LYMM

YOUR LOCAL DAIRY Est. 1932

Fresh, quality milk delivered to your doorstep.

A variety of local produce.

Early morning deliveries.

Call 757655 or email milk@broadsmith.com for our prices!

G P BROADSMITH & SON
POOL FARM, POOL LANE,
STATHAM, LYMM, WA13 9BW
TEL: 01925 757655

Everyone at the farm would like to congratulate Gary and the team on 25 years of Lymm Life!



**APPLY NOW FOR SEPTEMBER 2026 AND
GIVE YOUR CHILD THE BEST START!**



**FOREST
PREPARATORY
SCHOOL**

**Nursery and School
Places Available
from September 2026**

To Book A Tour

CALL 0161 980 4075

enquiries@forestschool.co.uk

www.forestschool.co.uk



Small Class Sizes (1:12 ratio)

Affordable Monthly Payments

Outstanding 11+ Results

ISI Inspection 'All Standards Met'

Senior councillor quits Lib Dems after nearly 30 years

LYMM South councillor Graham Gowland has formally resigned from the Liberal Democrats, bringing to an end almost three decades of party membership.

Cllr Gowland, a long-serving and senior Liberal Democrat figure in Warrington, had earlier this year resigned the party whip and moved to sit as an independent on Warrington Borough Council after losing confidence in the local group's leadership and direction.

He has now confirmed that he has also left the party itself, following unsuccessful attempts to engage with the party's national leadership on the issues he raised.

Cllr Gowland has played a prominent role for the Liberal Democrats locally and nationally. He stood as the party's Parliamentary candidate for Warrington South at the last General Election and was previously a candidate in the European Parliamentary elections, reflecting his long-standing commitment as a staunch pro-European.

Within the party, he had been widely seen as a leading future figure — including being a prospective candidate for the Cheshire Mayoral role and a likely parliamentary candidate for the Tatton constituency at the next General Election.

His earlier decision to resign the whip followed concerns that local decision-making was being driven by internal party positions rather

than constructive engagement on governance and the council's financial challenges — an issue he has since continued to speak out on as an independent councillor.

Commenting on his resignation from the party, Cllr Gowland said: "I joined the Liberal Democrats in 1997 and have remained committed to liberal values throughout my time in public life.

Earlier this year, I stepped back from the local group and resigned the whip after a prolonged loss of confidence in how the party was operating locally. That decision was about putting residents first and maintaining a constructive approach to governance. Since then, I have made genuine efforts to engage with the party at a national level about the concerns I raised. Unfortunately, in the absence of any meaningful response, I have concluded that it is no longer tenable for me to remain a member. This is not a rejection of liberal values — including my strong belief in Britain's place in Europe — but a recognition that the party, as it currently operates, is not in a position to reflect or deliver them effectively, particularly at local level."

Cllr Gowland emphasised that his decision was based on

organisational and leadership concerns rather than ideology, and reflects his wider focus on transparency, accountability, and effective local governance.

He will continue to serve residents as an independent councillor for Lymm South, focusing on local priorities and holding the council to account.



Making Every Day Count

Gift us your time become a Retail Volunteer today

Learn new skills

Enjoy exciting opportunities

Make a difference

Make new friends

Scan to find out more



Ask in store or contact us

T: 01925 575780

E: volunteering@stroccos.org.uk

Kidney Disease: The silent condition thousands in Warrington may not know they have

By Dr Stephen Coogan MBChB MRCP, Founder and CEO, myGP Clinic

Most people know they should keep an eye on their blood pressure, cholesterol and blood sugar. Far fewer think about their kidneys – until something has already gone wrong.

That is a problem, because chronic kidney disease, often shortened to CKD, is one of the most important long-term conditions we do not talk about enough. Recent research published in The Lancet has highlighted a stark issue: a significant proportion of kidney disease remains undiagnosed, even in countries such as the UK.

Kidney Research UK estimates that around 7.2 million people in the UK are living with chronic kidney disease. Put simply, that is roughly one in seven adults. Warrington's resident population is around 215,000, so if the national pattern is reflected locally, more than 20,000 people in Warrington may be living with some degree of kidney disease – many without knowing it. The reason is simple but dangerous. In its early stages, kidney disease usually causes no symptoms.

Patients often imagine kidney disease would cause pain in the back, urinary symptoms, or a clear sense that something is wrong. Sometimes it does. More often, it does not. A person can lose a significant amount of kidney function before feeling unwell. By the time symptoms such as tiredness, swollen ankles, breathlessness, nausea or

changes in passing urine develop, the disease may already be advanced. This matters to ordinary families across Warrington and Cheshire because kidney disease is closely linked with other common conditions: high blood pressure, diabetes, obesity, cardiovascular disease and increasing age. The risk rises as we get older, and nearly one in five Warrington residents is aged 65 or over. CKD is also more common in people of Black or South Asian background.

What is often missed is that kidney disease is not just a kidney problem. Poor kidney function increases the risk of heart disease, hospital admission, complications during illness, and medication-related harm. The kidneys are central to how the body manages fluid balance, blood pressure, waste products, and many medicines. When kidney function declines, the whole person is affected.

The frustrating point is that CKD can often be detected with simple tests. A blood test can estimate kidney function, usually reported as eGFR. A urine test can look for protein leakage, often measured as an albumin-to-creatinine ratio. That urine test is particularly important because protein in the urine can be an early

warning sign, sometimes before kidney function has significantly declined.

Good GP care should start with a proper history. Does the patient have diabetes, high blood pressure, heart disease, recurrent urine infections, kidney stones, autoimmune disease, or a family history of kidney disease? What medicines are they taking? Are they regularly using anti-inflammatory painkillers such as ibuprofen or naproxen? Are there changes in blood pressure, weight, swelling, tiredness or urine?

Examination also matters. Blood pressure should be measured properly. Weight, cardiovascular risk and signs of fluid retention should be considered. Investigations should include kidney blood tests and, where appropriate, urine testing for protein. At myGP Clinic, this is exactly why we believe prevention and early detection must sit alongside traditional family medicine. Modern diagnostics are useful, but only when combined with clinical judgement, continuity, and responsibility for follow-up.

For patients, the practical advice is straightforward. If you have high blood pressure, diabetes, heart disease, obesity, a family history of kidney disease, or are over 60, ask whether your kidney function and urine protein have been checked. Do



not rely on symptoms. Keep blood pressure well controlled. Manage blood sugar carefully if diabetic. Avoid regular anti-inflammatory medication unless advised by a clinician. Stay active, maintain a healthy weight, stop smoking, and review long-term medicines periodically.

You should seek medical advice if you develop persistent ankle swelling, unexplained breathlessness, blood in the urine, frothy urine, worsening tiredness, nausea, poor appetite, or a change in how often you pass urine. But ideally, kidney disease should be found before symptoms appear. The lesson is not to panic. It is to be sensible. Kidney disease is common, often silent, and too often missed. A simple urine test, a blood test, and proper clinical follow-up can make a real difference. Prevention is not glamorous medicine, but it is often the medicine that protects healthspan, independence and quality of life for years to come.

New MRI at Antrobus Clinic

myGP
CLINIC

Personalised Healthcare with a dedicated GP

- ✓ Dedicated local GP
- ✓ Guaranteed same-day appointments
- ✓ Kids go free
- ✓ No waiting times
- ✓ 30-minute appointments
- ✓ On-call Concierge team
- ✓ Annual health screening

Book your free consultation today
www.mygpclinic.co.uk

01925 972 673

Thellow Heath Park, Northwich Road, Antrobus, CW9 6JB



History in the making at L

THE historic streets of Lymm village were alive with music, colour, and community spirit as thousands gathered for the annual Lymm May Queen Festival, as history was made with the first ever Prince, alongside the traditional May and Rose Queens.

Overcast skies and showers failed to dampen spirits as the long-standing tradition—which dates back to 1889—made a spectacular return, transforming the heart of the village with its iconic grand procession and a packed afternoon of celebrations on the Lymm May Queen Field.

The day kicked off outside the Brookfield Surgery, where a vibrant parade of floats, marching bands, and local community groups began

its journey.

Spectators lined the closed roads along Eagle Brow, Pepper Street, and The Cross to catch a glimpse of this year's newly selected royal retinue.

The true highlight of the festival took place in the main arena, where the official crowning ceremony took centre stage.

Leading the royal retinue this year as the 2026 Lymm May Queen was Summer Eborall.

Summer, who currently attends Oughtlington Primary School and will be heading to Lymm High School this coming September, looked radiant as she accepted her crown.

In her spare time, she loves roller skating, playing netball, and

spending quality time with her family.

She achieved her crowning glory after being dedicated to the festival's retinue for five years.

Sharing the spotlight was Rose Queen Maggie Lyon, aged 8. Maggie lives locally in Lymm with her brothers, Max and Lenny, alongside her beloved cats, Rosie and Jim.

Currently in Year 4 at Ravenbank Primary School, Maggie is known for her enthusiastic approach to life and an impressive array of hobbies, which include football, gymnastics, skiing, rollerblading, crafting, and acting. She is also a dedicated member of the local Brownies group.

Having previously served the retinue as a flower girl, Maggie was excited at being chosen to wear the Rose Queen crown this year.

History was also made at this year's festival with the introduction of the first-ever Lymm Prince, Mark

Morrison.

Mark, a lively young gentleman aged 8, is a member of the 4th Lymm Beavers and trains with Warrington Gymnastics.

A pupil at Cherry Tree Primary School, Mark loves going fishing with his mum and playing computer games with his dad. Royalty runs in the family for the Morrisons; Mark's older sister, Iseabal, is a former Lymm Rose Queen, and the pair share a wonderful sibling friendship.

Following the formal crowning, the May Queen Field erupted into a bustling afternoon of entertainment. Families enjoyed thrilling fairground rides provided by Silcocks Fun Fair, explored dozens of charity and artisan stalls, and sampled an array of local food and drink options, heavily supported by main event sponsor Naz's Spice Lounge.




 xeinadin

Helping
you grow.

Your local accountants
and business advisors in
Warrington.

Are you looking for
progressive accountancy,
business and tax advice?

Get in touch with one of our experts

 01925 761 600

 warrington@xeinadin.com

www.xeinadin.com/warrington



FORWARD THINKERS.
TRUSTED ADVISORS.

Lymm Eye Clinic

Local, professional eyecare when you need it

A comfortable, friendly environment where all aspects of ophthalmology can be diagnosed and advised upon with the most up-to-date imaging equipment available.

No referral necessary, book your appointment online

www.lymmeyeclinik.co.uk

Tel: 07498 456312 | 16A The Cross, Lymm, WA13 9RR

Warrington May Queen Festival



Need IT Support at Home?

- Skilled and Friendly Technicians
- PC and Laptop Support
- Home Visit or Remote Dial-in
- Antivirus/Malware Check
- Unlimited Support Time
- Equipment Supplied: Laptops, PCs, Printers & Bespoke Builds



aspire
Computers Ltd

Call our Team: 01925 251143
sales@aspire-computers.com | www.aspire-computers.com

disability trading company

Motability Scheme

- Mobility products, sales, serving & repairs
- Rise/recline & fireside chairs
- Adjustment beds & stairs-lifts
- 3 & 4 Wheel walkers
- Bathing, kitchen & continence products
- Free no obligation assessments in-store or in your home
- Pre-owned equipment available



Centre for Independent Living
Beaufort Street, Warrington WA5 1BA T: 01925 240064

Mobility & Independent Living
Lifeforce, Summers Road, Liverpool T: 0151 7090121

Mobility & Independent Living Store
30 Sankey Street, Warrington WA1 1TD T: 01925 416624

Mobility & Independent Living Store
Unit 6, Dewhurst Road Birchwood WA3 7PG T: 01925 251079

www.disabilitytradingcompany.co.uk



All profits support our charity work at Warrington Disability Partnership

Grappenhall Dental Practice

High-Quality Family Dentistry at Honest Prices

Welcome to the team Dr Vicky Rees

Now taking new clients after winning a lengthy planning battle for a new fully accessible downstairs surgery after 20 successful years!

Independent private practice

Private dentistry at NHS prices
Children up to 16 seen free of charge (conditions apply)

Easy parking/groundfloor easy access including wheelchair

State of the art equipment highest standards of cleanliness and cross infection control

Emergencies seen same day no waiting lists

Dr Andrew Brown and associates welcome new patients

BDA Good Practice Member



01925 210977 info@grappenhalldental.com
01925 481341 www.grappenhalldental.com
148 Knutsford Rd, Grappenhall, Warrington WA4 2PW

Your pet questions answered

By Dr Rachel Dean,
Burford Lane Vets

How can I help my dog stay cool during summer?

Fresh water and shade are the two essentials – make sure your dog has access to both at all times. On particularly warm days, a cooling mat or damp cloth can bring quick relief, and keeping the house well-ventilated makes a real difference too.

Avoid walking during the hottest part of the day. Pavements and paths can get hot enough to burn paws, and the risk of overheating is at its highest around midday. Early mornings and evenings are much better, when the temperature is manageable and the ground has had a chance to cool down. Regular brushing helps too – and for some breeds, a light seasonal trim can make a noticeable difference to how comfortably they handle the heat.

Never leave a dog in a parked car, even for a few minutes. The temperature inside rises faster than most people expect, and it can become dangerous very quickly.

Is it okay for my dog to swim in lakes or rivers during warm weather?

Open water can be a great way for dogs to cool down and burn off energy, but it's worth a little thought before letting them in. Water quality matters – check for any warnings about blue-green algae or bacterial contamination before you go. Many local authorities post updates online, so it's easy enough to check ahead. Make sure parasite prevention is up to date for any dog spending time near natural water.

Keep dogs away from fast-moving or turbulent stretches, and always make sure they can get out of the water easily. A rinse after swimming helps remove anything unwanted from their coat. For dogs who aren't strong swimmers, a well-fitted canine life jacket is a sensible



precaution that gives everyone a bit more confidence.

What are the symptoms of heatstroke in cats, and how can I avoid it?

Cats can suffer from heatstroke too, and the signs aren't always obvious. Look out for laboured breathing, excessive drooling, lethargy and loss of coordination – in more serious cases, vomiting or collapse can follow.

Keeping living areas cool and airy is one of the best things you can do, alongside making sure fresh water is always available. During the hottest part of the day, it's better to keep cats indoors if you can, with shaded spots available if they do go outside. If you notice any of these signs, move your cat somewhere cool without delay and call us straight away.

Can rabbits get flystrike in hot weather – and how do I stop it?

Flystrike is a real risk for rabbits in summer, but it is largely preventable. Flies are drawn to damp or soiled fur, where they lay eggs that hatch quickly into maggots. Daily checks are essential – remove wet or dirty bedding promptly and keep the whole living area as clean as possible. A diet with plenty of fibre helps prevent the loose stools that create the conditions flies look for, and long-haired rabbits benefit from regular grooming sessions through the warmer months.

Any sign of eggs, maggots, unexplained fur loss or skin irritation should be treated as urgent. Get in touch with us right away.

A much trusted vet in Lymm



Visit burfordlanevets.co.uk/book and book online today, or call 01925 949 949

Lymm nursery raises over £2,000 for the DYRK1A UK Community



Children from Kids Planet Lymm came together for a fundraising day, filled with colour, care and purpose to honour and celebrate the life of a special member of the nursery family.

The day saw children, colleagues and families from the nursery take part in a series of collaborative activities such as a sponsored walk, a bake sale and a raffle in memory of Helen, a former Kids Planet Lymm member who lost her life to DYRK1A in April 2024. Those who participated dressed in bright rainbow colours in support of the DYRK1A community.

The DYRK1A UK Community assists children and families affected by the rare genetic syndrome, helping them to connect with one another and share experiences. So far, the event has raised an amazing £2,140, which will be primarily used to fund annual meet ups to learn more about the condition from professional speakers.

As children at Kids Planet are actively encouraged to learn outside of the classroom, Helen's Rainbow Day allowed them to

gain a greater understanding of kindness, compassion and the importance of supporting those in the wider community. They were able to recognise how coming together for small acts of generosity can make a positive difference to the lives of others.

Faye Hennessey, nursery manager at Kids Planet Lymm has commented on the day, sharing, "We are extremely proud of the team and the children for their participation on the day; we had a fulfilling day, shared memories as we continue to keep Helen's memory alive and raise awareness for the DYRK1A charity. We would like to thank the community and local businesses for all their support and generous donations too!"

To donate to the DYRK1A UK Community, please visit the link here: www.justgiving.com/page/helens-rainbow-day-2026



FAMILY RUN BUSINESS • ESTABLISHED IN 1998

The **M6** Bed Warehouse

MACCLESFIELD STORE

OPENING SUMMER 2026

MACCLESFIELD STORE
SUMMER 2026
OPPOSITE B&Q - SK11 6XF



Winner
Small NBF Retail
Champion of the Year



ALSAGER STORE

RADWAY GREEN BUSINESS PARK - CW2 5PR



NORTHWICH STORE

WINNINGTON BUSINESS PARK - CW8 4DL

Expert Advice • Free Delivery & Free Disposal • Instore & Online

Tel: **01270 879379** • **www.m6beds.co.uk**

Vital maintenance works for Lymm Dam

Important work to protect the future safety and integrity of the historic Lymm Dam has been taking place.

Works have been taking place to replace three inlet valves as part of the draw-down mechanism for the dam during early June.

The critical valves have reached the end of their service lives and now require replacement to secure the future safety and integrity of the dam.

The highly skilled engineering work was undertaken during the daytime using a specialist dive team. There was some minor inconvenience to road users as the work was undertaken under temporary traffic signals.

Following the valve replacement works, the A56 Church Road will be resurfaced between Elm Tree Road and Rectory Lane. The works are programmed to commence on 29 June and last for up to eight weeks. To undertake the resurfacing works safely, a road closure is required between 7pm and 1am (Monday

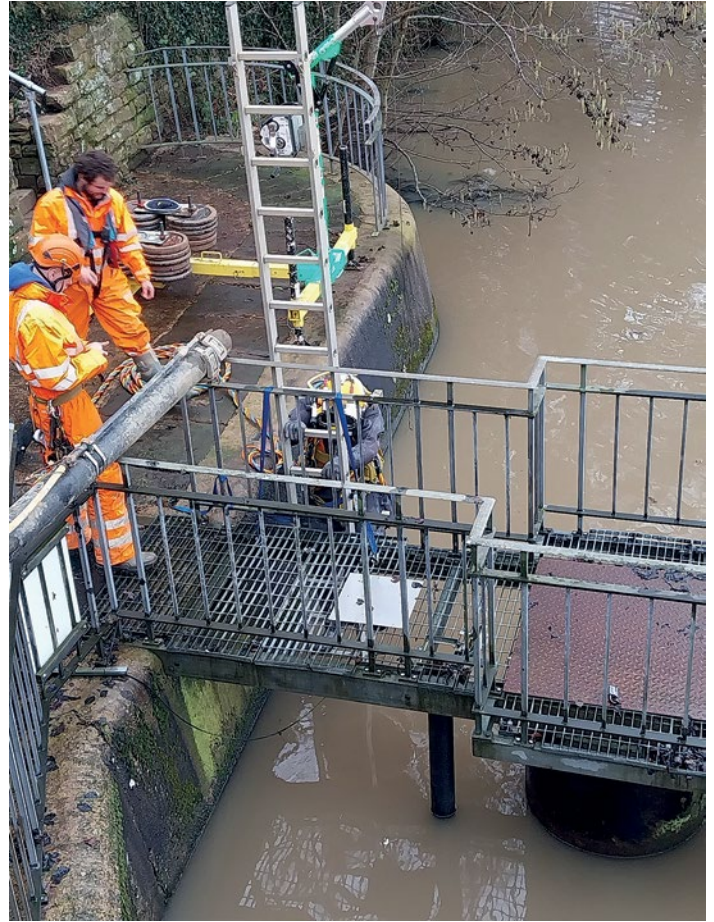
to Friday).

Footway improvement works will also be undertaken at the same time with some works undertaken during the day under temporary traffic signals, where necessary. These works have been successfully coordinated with United Utilities who will be taking advantage of the road closures to undertake investigation and maintenance works to their assets at the dam to avoid further disruption to motorists.

Cllr Hans Mundry, Leader of Warrington Borough Council, said: "I'm delighted these projects to maintain and improve Lymm Dam and public highway are moving ahead, and I'm grateful to our highway engineering, bridges and flood risk management team for co-ordinating and delivering this essential work.

"These projects represent vital maintenance to key highway infrastructure. By upgrading the dam mechanisms and resurfacing the A56 Church Road, we are ensuring long-term safety and smoother journeys for the community.

"We understand that roadworks can cause inconvenience, which is why we have worked closely with United Utilities to coordinate these schemes. This collaborative approach eliminates the need for additional road works, ultimately saving time and preventing further disruption to motorists."



PRIESTLEY
COLLEGE
WARRINGTON



AMBITIOUS FOR ALL

60% of A-Level grades awarded at A* A or B

99.8% overall A-Level pass rate

81% Extended Diploma grades were triple distinction or higher

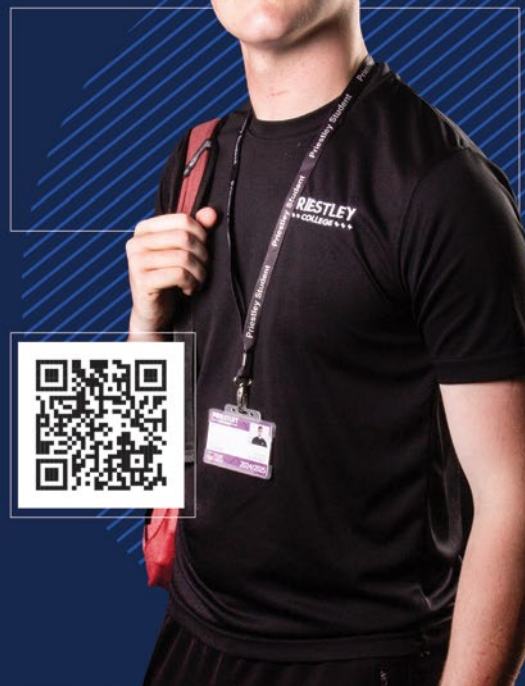
81% A-Level A*, A, B or C

GCSE resit pass rates - Maths double the national average / English triple the national average

100% pass rate in all Vocational Diplomas and Extended Diplomas

A* rate well above national average

100% pass rate in all T-Levels



One pharmacy not enough for a village the size of Lymm



WITH the Lymm Pharmacy closing its doors in the village for the final time, a local Cllr. says one remaining pharmacy is not enough to cope with the workload.

Lymm South Cllr. Graham Gowland said: "First and foremost, the frontline teams at both Lymm Pharmacy and The Cross Pharmacy were absolutely fantastic."

"As a local councillor, I have only ever received overwhelmingly positive feedback about their dedication, care, and hard work. They have our community's full support during what is an incredibly stressful transition caused entirely by commercial lease pressures. However, while a paperwork transfer across the road sounds simple, the physical reality is a major step backwards for Lymm. The remaining premises at The Cross Pharmacy simply do not have the infrastructure to safely handle the volume of the entire village. The building lacks vital independent wheelchair and pram access, and it does not possess equivalent private consulting space for confidential medical advice.

"I am raising this formally with the leadership of NHS Cheshire and Merseyside to challenge the suitability of this layout under



accessibility standards, and I strongly urge residents to log their specific access concerns directly with the Integrated Care Board."

He went on to explain that while individual pharmacies are private contractors, they operate entirely on behalf of the NHS. The NHS Cheshire and Merseyside Integrated Care Board (ICB) holds the statutory responsibility for ensuring Lymm has adequate, safe, and accessible healthcare coverage.

When a pharmacy closes due to commercial pressures, the ICB cannot force it to stay open. However, the ICB is legally responsible for the remaining level of service in the village under the NHS Pharmaceutical Needs Assessment regulations.

By allowing all patient services to automatically default to a single, remaining site, the ICB is sanctioning a situation where a building with known accessibility barriers (two steps and a non-compliant portable ramp) is being forced to absorb a massive 150 per cent workload spike.

Furthermore, as a public authority, the ICB is bound by the Public Sector Equality Duty. They have a legal obligation to ensure that changes to local NHS provisions do not discriminate against elderly or disabled patients.

Because the remaining footprint lacks proper independent access and equivalent private clinical space for the 'Pharmacy First' scheme (shrinking from 2 consultation rooms to one that's harder to access), the ICB has a direct regulatory duty to step in, review the physical suitability of the remaining provision, and ensure Lymm's infrastructure is fit for purpose.

As reported previously, the Lymm Pharmacy is closing due to increased rents and overheads which have made it unviable as a business.

All clients have been transferred to the nearby The Cross Pharmacy.



Chambers Fletcher Solicitors

Divorce Column

By Peter Wilkinson
Divorce Lawyer at Chambers Fletcher Solicitors

Child Arrangements How does the court decide?

One of the most common concerns for separating parents is what will happen regarding the children.

Questions such as "Where will they live?", "How often will I see them?" and "What happens if we can't agree?" are often at the forefront of people's minds.

The good news is that many parents are able to reach their own agreement regarding child arrangements, but where agreement cannot be reached the court has the power to make decisions by way of a Child Arrangements Order. In this regard, a question I am often asked is: "How does the court decide?"

The answer is that the court's paramount consideration must always be the welfare of the child. The court is not concerned with rewarding or punishing either parent but rather its focus is on the child's welfare, and in practical terms, what is in the child's best interests.

In deciding what arrangements are in a child's best interests the court will have regard to anything it considers to be relevant, but in particular to the child's wishes, their age, their needs (in a broad sense), the likely effect of any change in their circumstances, any harm suffered or at risk of suffering and the capability of each parent to meet the child's needs.

Importantly, there is no rule that children should live with one parent rather than the other. Every family is different and every case turns upon its own facts, but as a general rule the court will consider it better for the child for both parents to be involved, unless the contrary is shown.

Whilst court proceedings are sometimes unavoidable they should generally be seen as a last resort. Whilst there will be cases where communication between parents is difficult or inappropriate, parents should try, wherever possible, to focus on finding practical solutions that place the needs of their children first.

If you require advice regarding child arrangements or any other aspect of family law, please feel free to get in touch. We have a great deal of experience advising and supporting clients in family law matters.

Family Law & Divorce Residential Property Commercial Property Wills, Trusts & Probate



Peter Wilkinson



Stephen Worrall

01925 359005
www.chambersfletcher.co.uk

Cambridge House, Suite 4, 16 Walton Road,
Stockton Heath, Warrington, WA4 6NL

Celebrating 35 years of a “can do” culture at Disability Awareness Day 2026

THE 35th annual Disability Awareness Day (DAD) will officially be held in Warrington on Sunday, 12 July 2026, opening its gates at 10:00 am to welcome thousands of visitors to the beautiful grounds of Walton Hall and Gardens.

Organised by the Warrington Disability Partnership (WDP), this year’s landmark event marks three and a half decades of promoting a positive “can-do” culture.

It stands proudly as the world’s largest voluntary-led, pan-disability exhibition and independent living expo.

The mammoth undertaking is made possible through the vital support of its principal sponsors, regional water supplier United Utilities who are supported by various corporate sponsors and supporters.

Dave Thompson MBE DL, Co-founder of Warrington Disability Partnership, said: “The continued backing from United Utilities and our other generous sponsors ensures that the event remains entirely free to enter, providing a vital, accessible platform for the community.

“The corporate social responsibility from partners is more critical than ever,” added Dave, who led the setting up the charity after breaking his neck playing American Football in 1989. “This support directly aids families navigating independent living, health, and mobility needs.”

While the main exhibition takes

place on Sunday, it serves as the grand finale to an entire week of complementary, fun-packed activities.

Starting days prior, the tented village at Walton Hall and Gardens will host a series of specialised events featuring events for carers, disabled children and young people, Dementia Awareness and two evening events showcasing inclusive talent.

“DAD Week” concludes on Friday evening with Queen tribute band “I Want It All” performing in the dedicated Arts Marquee.

When the main event starts on Sunday, visitors will find nearly 200 exhibitors spanning statutory services, local businesses, and voluntary organisations.

Together, they will offer expert advice on mobility equipment, vehicle adaptations, holidays, employment opportunities, support groups and services.

Beyond essential information, DAD 2026 promises a vibrant festival atmosphere featuring:

- The Main Aren for family entertainment and community performances.
- The Sports Zone provides opportunities to try scuba diving,

wheelchair sports, and adapted games.

- The Arts & Performing Marquees provide live music, inclusive dance troupes, arts and crafts, plus a dedicated silent disco.
- A classic car show will include WDP’s Invacar AC70 and their disability timeline.
- New for 2026 is the Viking reenactment and the Viking village.

The exhibition runs from 10:00 am until 4:30 pm. To ensure maximum accessibility, organisers provide a free wheelchair and mobility scooter loan service on-site and

British Sign Language interpreters.

A free accessible, complimentary park-and-ride bus service will be available from Wilderspool Park, and a free accessible bus service will run from the Warrington Bus Interchange provided courtesy of Warrington’s Own Buses (see website for times).

Come along to celebrate community togetherness, discover cutting-edge independent living aids, and support the incredible “DAD Army” of volunteers making it all happen.

For more detail visit www.disabilityawarenessday.org.uk




#DAD2026

Disability Awareness Day

Sunday 12th July 2026 ■ 10am - 4.30pm ■ Walton Gardens ■ Warrington ■ WA4 6SN

Promoting Independence Throughout Life & Work

- 100's of Support Groups & Services
- Equipment & Vehicle Suppliers
- Performing & Visual Arts
- Main Arena
- Sports Zone
- Family Entertainment









Scan to visit our website



Principal Sponsor


Organised by


01925 240064
www.disabilityawarenessday.org.uk

Lymm Squash Club is on the up!



LYMM Squash Club is on the up after the 1st team won Division 4, securing promotion to Division 3 for the first time in a long time!

In addition to the league performance, the club based at Lymm Rugby Club, has taken a number of steps to grow and improve the squash club over the last 6 months.

The club has had its first ever season with a dedicated Racketball (Squash 57) team in the regional leagues. While they finished bottom of the league they picked up a few victories in their maiden season.

It was also the first season that Lymm entered three teams in the leagues for a fair number of years. Two teams in Division 4, which the first won and one in division 5.

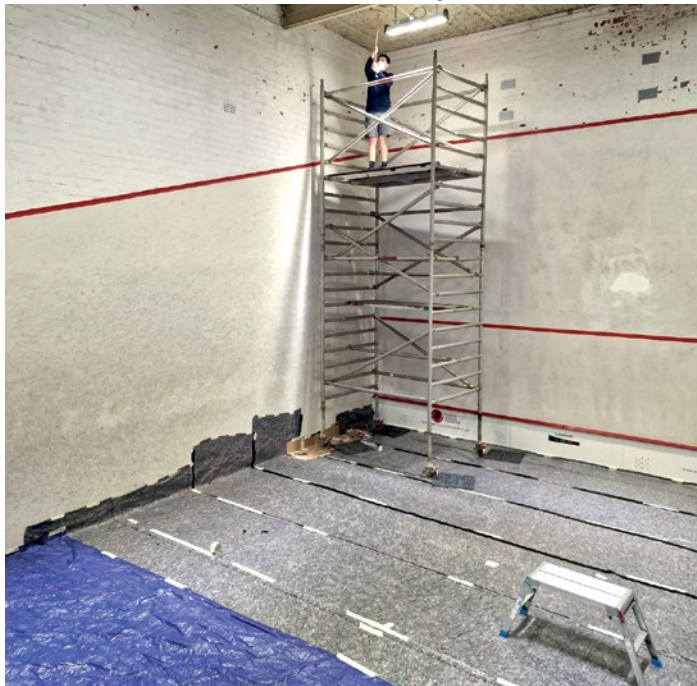
The courts have also undergone significant renovation over the last

two years, with floors sanded, new heaters and lighting being installed before finally being completed in January this year, with the courts repainted.

All this has resulted in membership numbers doubling over the last 12 months and the introduction of a new digital court booking system.

A new committee was appointed 12 months ago who have overseen these changes.

The club has also recently entered into a partnership with Squash+ to provide junior and adult coaching at the club. They now have two junior age groups running every Friday and 1-2-1 or group adult training available to book.



John Burrows & Sons
Fourth Generation Independent Family
FUNERAL DIRECTORS
Established 1878

FRIENDLY AND PROFESSIONAL SERVICE ~ DAY OR NIGHT ~ J. TANDY

The Old Smithy, Mill Lane, Lymm, WA13 9SE

Please telephone **01925 752501**

www.johnburrowsandsons.co.uk



CLASSIFIED Call 01925 631592 to advertise

ACCOUNTANCY & BOOKKEEPING

BOOKKEEPER/ACCOUNTANT. Licensed for maintaining financial records, VAT Returns, Payroll Service, Management Accounts, SAGE Software Consultancy. **Contact: 07815 617914.**

BUILDING SERVICES

GT8

HOME IMPROVEMENTS

SPECIALISED IN ALL TYPES OF JOINERY

EXTENSIONS

TILING | PAINTING

BATHROOMS | KITCHENS

NO JOB TOO SMALL

ESTABLISHED OVER 35 YEARS

07985 182851

CARPET CLEANING

A1 STAINBUSTERS. A Warrington company cleaning carpets, hard floors, Upholstery (Leather + fabric) and curtains in situ. FREE quotes for domestic and commercial. Approved carpet cleaners for Hancock and Woods for over 10 years. **Call John on 07765 314080**

SIMPLY THE BEST CARPET CLEAN YOU will ever have. Cleaners UK Ltd. Est over 35yrs. Have your carpets & sofas beautifully deep cleaned leaving them fresh smelling & colour restored. Latest & best methods. Dry/steam. Leather cleaning, oriental rug specialist. Professional, reliable & affordable. **For more info call Neil Riley on 01925 264989 / 07831 336060 www.cleaners-uk.net**

CLEANING SERVICES

arleys angels

- Spring Clean Specialists
- Presenting your home for sale
- Moving house
- After building work cleans

01925 266834
... because you're worth it!

SIMPLY THE BEST CARPET CLEAN YOU will ever have. Cleaners UK Ltd. Est over 35yrs. Have your carpets & sofas beautifully deep cleaned leaving them fresh smelling & colour restored. Latest & best methods. Dry/steam. Leather cleaning, oriental rugs specialist. Professional, reliable & affordable. **For more info call Neil Riley on 01925 264989/ 07831 336060 www.cleaners-uk.net**

PAINTING & DECORATING

PRIME COATS

Painting and Decorating Service

Interior. Exterior. Residential Commercial. Industrial

Contact us for a free quote
Covering Warrington and surrounding areas

Mob: 07366 163818
Email: liam.primecoats@gmail.com

PAYROLL

WHY TRY TO BE A PAYE EXPERT? Watkinson Black can provide a cost effective payroll service, releasing you to concentrate on your business. **For further details please phone: 01925 413210 or e-mail: info@warringtonaccountants.co.uk**

RE-UPHOLSTERY

Orchard Soft Furnishings

RE-UPHOLSTERY
CURTAINS • BLINDS

FREE MEASURING & FITTING

TEL:(01925) 756388
www.orchardsoftfurnishings.co.uk

GARDENING SERVICES

All aspects of tree surgery
Stump grinding
Waste removal
Locally based
Free quotation

Beechwood Industries
www.beechwoodindustries.co.uk
01925 860544

TAXI / PRIVATE HIRE

Horn's

Airport Transfer & Taxi Specialists
CALL MARTYN: 01925 751761
MOBILE: 07881 786250

TYRES

EVERGREEN Centre of Excellence

Express Mobile Tyres

Local Family Business. Est. 1997
01925 810000
www.expresstyres.co.uk
Order Online Today!

Branded & Budget Tyres
Cars, Vans, 4x4's, Caravans
Light Commercial
& Performance Vehicles

The tyre service that comes to you at home or your place of work

No Call Out Charge!

BRIDGESTONE MICHELIN
GOODYEAR Continental

To advertise in the classified section from as little as £15+vat

Call us now on 01925 631592

The North West's leading supplier of concrete

www.barrowmixconcrete.com

BARROW - MIX

EST
1984



FREE SITE SURVEY

6 DAY SERVICE

All areas covered

Free barrowing service

Only pay for what you lay

From half a cubic metre upwards

Levelling/laying service if required

(minimum charge)

We can supply

C25, C30, C35 Fibre Reinforced



VISA

MasterCard

Maestro

SOLO

Call NOW for a FREE quotation

01565 734111 or 01942 722629