

Lymm Life

Magazine

Over 25 years of free community news

ISSUE 307 | FEBRUARY 2025
DELIVERED FREE TO 5000 HOMES



urban

BUILDING PROJECTS LTD

**Extension &
Building Renovation
Specialists**

Tel: 01925 730888

www.urbanbuildingprojects.co.uk



**LYMM
PARISH
COUNCIL**

Approved by Lymm Parish
Council as the official
magazine for Lymm

Lymm Eye Clinic

*Local, professional eyecare
when you need it*

No referral necessary,
book your appointment online

www.lymmeyeclinik.co.uk

Tel: 07498 456312

1 Birchbrook Road, Lymm



**Chambers
Fletcher
Solicitors**

Family Law & Divorce
Residential Property
Commercial Property
Wills, Trusts & Probate

01925 359005

www.chambersfletcher.co.uk

URBAN
GARDEN PROJECTS
**TRANSFORMING
OUTDOOR SPACES**

PATIOS
DECKING
DRIVEWAYS
FENCING
MAINTENANCE



Phil McGuinness

01925 599 544

www.urban-garden-projects.co.uk

What next for Lymm?

Page 3

Regular news updates at www.warrington-worldwide.co.uk

Editor
Gary Skentelbery

Production
James Bryan

Advertising
James Balme
Telephone
01925 631592

Editorial
01925 623633

Email
info@lymmmlife.co.uk

Websites
www.lymmmlife.co.uk
www.culchethlife.com
www.frodshamlife.co.uk
www.warrington-
worldwide.co.uk
www.warrington.tv

Address
New Media Centre
Old Road Warrington
WA4 1AT

*Lymm Life is published
monthly by Orbit News Ltd.*

*The contents of this magazine
are fully protected by copyright
and nothing may be reprinted
or reproduced without prior
permission of the publishers.*

*The publishers are not liable for
any statement made or opinion
expressed by third parties in this
publication.*

Printed by TwentyFourSeven

Editor's Comment



AFTER all the excitement of Lymm Dickensian Day and Carols from The Cross on Christmas Eve, little did we know what the New Year would bring!

The New Year Day floods, which saw the historic Bridgewater Canal burst its banks at Little Bollington was truly devastating, along with various other flooding issues across the area.

This was followed by one of the coldest snaps we have experienced for many a year as Lymm and the surrounding area was transformed into a Winter Wonderland.

While it looked pretty for photographs it proved treacherous on the local roads and footpaths.

Add to this the winter bugs doing the rounds, it has certainly been a tough start to the year for many, especially those who live on the Bridgewater Canal who were

literally left stranded.

Thankfully canal owners Peel have now announced that work will start to carry out the repairs.

The Bridgewater Canal still has a hugely important role to play in village life, in particular with the tourism and passing trade it brings.

Let's hope the necessary investment is carried out to ensure the works are done properly.

Meanwhile, I would like to thank local Cllr, Graham Gowland for working around the clock keeping people informed and always being at hand to help us communicate important messages to the local community.

Our website has never been so

busy, attracting over 30,000 visits on New Year's Day alone!

**Deadline for the
March issue of
Lymm Life is February 4**

**Scan for all the
latest news**



Tracey Turton

**HELPING WOMEN OVER 50
IMPROVE THEIR HEALTH AND VITALITY**
with the power of natural medicine

BOOK YOUR FREE 30 MINUTE DISCOVERY CALL TODAY

01925 730123 | www.traceyturton.co.uk

N & J STANHOPE

Coal and Log Supplies

Smokeless Fuel • Kiln-dried Logs

Coal Bunkers

Caravan Storage

Fresh Bacon and Eggs

Open 6 Days. Closed Sunday

Broomedge Farm

Burford Lane, Lymm WA13 0SE

**Tel: 752830
Mobile: 07979 785 421**

PRIMROSE HILL NURSERIES

Come and visit our knowledgeable and friendly team at Primrose Hill Nurseries where we have an abundance of stunning plants and shrubs grown on site at Primrose.



**Wide range of plants,
trees and shrubs**



**Bedding plants and
hanging baskets**



**Indoor houseplants
and gifts**



**Visit our Primrose Cafe
open 7 days a week**



**PRIMROSE HILL
NURSERIES**

Est. 1935

Mon-Sat 8.30am-5pm. Sun 10am-4pm. 01925 752635. Warrington Road, High Legh, Cheshire WA16 0SQ.



Breach of Bridgewater Canal and what it could mean for Lymm

LOCAL historians feared the breach of the Bridgewater Canal could have a major impact on the village, as it did last time in 1971.

Alan Williams from the Lymm Heritage Centre says the latest breach of the Bridgewater Canal is a tragedy for the canal, its users and in many ways for the whole of Lymm itself.

The canal originally opened through Lymm in the 1770s to provide a route for trade from Manchester to the Mersey estuary and from there to the sea. In more recent times Lymm has become a Mecca for boaters on the Bridgewater Canal.

Lymm Historic Transport Day has annually highlighted its importance but throughout the year it is a popular stopping point for boaters on the Cheshire Ring or for shorter journeys to and from Manchester. The boats in turn are an attraction for day visitors to Lymm who enjoy the simple pleasure of gongoozling (look it up!).

Alan says: "The potential downside for Lymm is clear. Less boats means less visitors. We can only hope that Peel, the ultimate owners via the Bridgewater Canal Company, working in conjunction with the Bridgewater Canal Trust can respond more positively and quickly than last time round in 1971. Then it took a concerted campaign that included the national boat rally being held in Lymm in 1972

before the canal was eventually reopened in September 1973. Peel do not have a great reputation for spending on infrastructure locally as exemplified by the long-running

arguments over Latchford Bridge and locks and Warburton Bridge and, to be fair, this is going to be a huge and expensive project to put things right.

One thing that is certain is that we are just at the beginning of the story here.

A ten minute movie produced by Lymm Heritage Centre to understand the local impact of the 1971 breach can be viewed on youtube. The latest breach is of some similar scale, very close to that earlier disaster.

Bridgewater Canal rescue plan confirmed

Bridgewater Canal owners Peel confirmed as Lymm Life went to press, that the breach caused by flooding on New Year's Day will be dammed past all stranded boats, and refilling will start on January 20.

It is estimated it will take two weeks to refill the canal.

Confirming the update Lymm Councillor Graham Gowland commented: "It's a relief for all those affected to know the timescale for refloating. The boaters are a resilient bunch, but life at an angle hasn't made life easy, let alone not being able to access services such as water and pump-outs."

Fellow Parish councillor Jenna Brown added: "The way the community and different agencies have pulled together has been amazing. Councillors from Lymm and Little Bollington Parish have worked together, and the council has pulled together everyone from

Peel to United Utilities, to provide as much support as they can to those affected.

"We shouldn't forget how the community themselves worked together to fix as much as they could, and with

the support from local businesses it's been a heart-warming response to an awful situation."

Further updates can be found on the Bridgewater Canal website <https://bridgewatercanal.co.uk>





LITTLER'S
EST. 1957
VIDEO TAPE
CONVERSIONS

SAVE YOUR IMPORTANT FILMS & MEMORIES

We transfer a wide range of tape types to DVD, USB & even Cloud!

Simply drop in your tapes and we'll call or email when they're ready!

We currently transfer camcorder, VHS, Video8, Hi8, Digital 8, Cinefilm VHS, DV, Mini DV, HDV & Betamax.

Leave it to a local, family firm to protect your films and tapes for years to come!





(01925) 814711

298-300 Manchester Rd, Warrington, WA1 3RF

WWW.LITTLERSTV.COM

MAKES A GREAT GIFT!

BULK RATES AVAILABLE



Professional tree services

Free Quote

- Domestic
- Commercial
- Site Clearance
- Vegetation management
- Stump grinding
- Re-planting
- £10m public liability insurance



Beechwood Industries
www.beechwoodindustries.co.uk

For more information, please call us on **01925 860544**








What's On in conjunction with Lymm Parish Council



LYMM PARISH COUNCIL

Next meeting Tuesday February 11th, 7:30pm
Lymm Parish Hall
Check www.lymmparishcouncil.gov.uk for details.

LYMM THURSDAY EVENING BRIDGE CLUB

Lymm Village Hall every Thursday 7pm
Details: 07708 172015

MAPLE LODGE ART GROUP

Meet each Wednesday 9.30am - 11.30pm
Oughtrington Community Centre, Lymm
Details: 01925 755926

ROTARY CLUB OF LYMM

Meets at Warburtons Parish Rooms on the 2nd and 4th Wednesday each month at 8pm
Contact 01925 919053

LOVING HEARTS & HANDS

Knitting for charity at Lymm Methodist Church, 2nd and 4th Thursday each month.
1.30pm - 3pm. Details: 01925 753298

LUNCH AT THE BROW

Eagle Brow Methodist Church
2nd Friday in the month
Light lunches 12 noon till 1.30pm.
All proceeds to The Y Project Room at The Inn

GARDENING CLUB

Meet Third Wednesday of the month
Lymm Baptist Church, Higher Lane. 7.30pm
Visitors welcome. £2 includes tea and cake

LYMM FLORAL ART GROUP

Lymm Village Hall
Third Monday of the month (except August and December) at 7.30pm. Visitors most welcome. Contact: 07876 176501
lymmfloralart.org.uk

LYMM PHOTOGRAPHIC SOCIETY

Every 2nd and 4th Wednesday
(ex Aug), 7.30pm
Spread Eagle pub, Eagle Brow.
See our rolling display in Lymm Library
Details: www.lymmphotosoc.org.uk

LYMM WINE AND BEER CIRCLE

3rd Wednesday of the month, 8pm
The Spread Eagle Hotel
Details: 01925 756444

LYMM CONCERT BAND

Rehearsals every Thursday evening
United Reformed Church, 8pm.
Details: 01925 752934

LYMM WI

Every second Wednesday, 2-4pm at Lymm Youth and Community Centre. Visitors welcome.

LYMM AND DISTRICT MIXED VOICE CHOIR

Every Wednesday 7.30 Lymm Methodist Church. Contact 01925 601664.
cath@cstones.co.uk

PROBUS CLUB OF LYMM

A small, friendly social club for retired people.
Meets on second and fourth Tuesdays at 2:15pm.
Details: www.LymmProbus.club

LYMM DINGLE PROBUS CLUB

A friendly busy social club for retired men.
Meets on alternate Thursday afternoons at Lymm Baptist Church.
Details: www.lymmdingleprobus.club
Club secretary 01925 759995

FRIENDS OF LYMM LIBRARY CRAFT GROUP

Lymm Sanctuary Hub
Fridays 1.30-3.00pm
Details: 01925 754016

HEATLEY WI

Meets the second Thursday of each month at Oughtrington Junior School, 7pm
Visitors welcome. Details: 01925 752014

LYMM & THELWALL U3A

Speaker meeting 3rd Thursday of the month (excluding August & December) at Thelwall Parish Hall 10.00am. Prospective members welcome.
www.u3asites.org.uk/lymm-thelwall/home
Contact: enquiries@lymmthelwallu3a.org.uk



LYMM PARISH COUNCIL

Tuesday February 11th, 7:30pm
See parish council website for details.

Economists warn that inheritance tax raid on farms will cost £1 billion says MP

ECONOMISTS have warned that the government's inheritance tax raid on farms will cost the Treasury £1 billion more than it makes – backing up fears raised by Cheshire MP Esther McVey.

According to analysis by economists CBI Economics, the changes could reduce economic activity by £9.4 billion and see the Treasury miss out on nearly £1.3 billion by 2030.

Ms McVey, whose Tatton constituency includes the Lymm area, said the findings were the latest damning indictment that Labour did not understand farming, rural issues and the wider impact it would have on businesses.

She said: "This report comes as no surprise. My farmers were clear from the beginning the devastation this policy would cause not only on farms having to be sold, in turn putting food security and jobs at risk, but the wider implication on investment."

"It is obvious that if farms know they are going to have to find huge

sums of money to pay in inheritance tax, investment would be pushed to one side. People cannot spend money when they are looking at big bills."

The report said the treasury underestimate the impact the policy would have or that more than 125,000 jobs could be lost.

Earlier Ms McVey spoke in a Parliamentary debate on the changes to inheritance tax and set out concerns of Tatton farmers. She also told of warnings from accountant Richard Barnett, who works with many farmers across in Cheshire that the policy would not generate the amount Treasury claimed, but instead would increase numbers of people wanting farmland to the value of £1 million to avoid inheritance tax and increase land prices.



DELICIOUS MILK DELIVERED TO YOUR DOOR!

Fresh, quality milk delivered to your doorstep.

A variety of local produce. Everyone at the farm would like to congratulate Gary and the team on 25 years of Lymm Life!

Early morning deliveries.

Call 757655 or email milk@broadsmith.com for our prices!

G P BROADSMITH & SON
POOL FARM, POOL LANE,
STATHAM, LYMM, WA13 9BW
TEL: 01925 757655

Call us on: 01942 607250
www.elbfireplaces.co.uk
70 Twist Lane, Leigh, Lancashire WN7 4DP

Fire Surrounds, Stoves, Gas & Electric Fires

Established 40 YEARS

No need to change your carpet - made to measure fireplaces

Over 75 displays over 2 floors

Live wood burning stove on display

Is your conservatory too cold to use in Winter?
Why not install a stove?

ESTHER MCVEY MP

Member of Parliament for Tatton

I hold regular constituency surgeries around the area.

To make an appointment please call **01625 529922** or email officeofesthermcveymp@parliament.uk

Promoted by Angela McPake on behalf of Esther McVey MP both of 1 Canute Place, Knutsford, Cheshire WA16 6BQ. Funded through the allowances made available to the Member of Parliament.



Turn your house into a home with our selection of Shutters, Blinds, Little Greene Paint and Wallpaper and Home Furnishings

Visit us today at:

4 Framingham Road, Brooklands, M33 3SH | Tel: 0161 962 7255

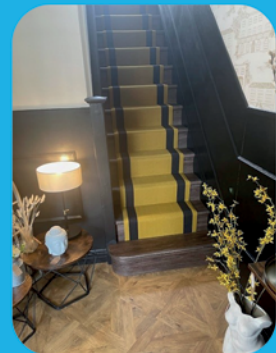
E: enquiries@inspiredbymay.co.uk | W: www.inspiredbymay.co.uk

@inspiredbymayhomefurnishings

wilde & sons

CONTRACT AND DOMESTIC FLOORING

A FAMILY RUN BUSINESS WITH OVER 25 YEARS EXPERIENCE



WE SUPPLY AND FIT HIGH QUALITY BRANDS INCLUDING KARNDÉAN, ALTERNATIVE FLOORING, WESTEX AND MORE

VISIT US TODAY AT

6 EASTWAY, SALE, M33 4DX | TEL: 0161 973 7868

4 FRAMINGHAM ROAD, BROOKLANDS, M33 3SH | TEL: 0161 962 7255

E: enquiries@wildeandsons.com | W: www.wildeandsons.com | @wildeandsonsflooring

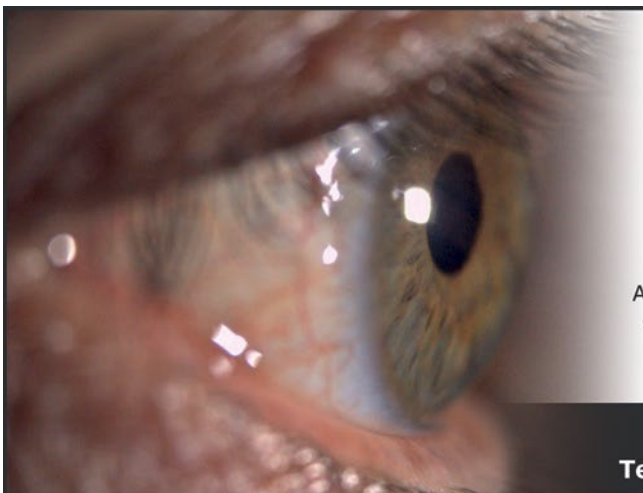
Thousands pack into Lymm village for Carols from the Cross



THOUSANDS of people packed into Lymm village centre for the annual Carols from The Cross event on Christmas Eve.

Town Crier AJ Powell continued the Christmas tradition of his late grandad Peter Powell by starting proceedings hosted by Cheshire's Mix 56 and Smiley Tunes who were joined on stage by local MP Esther McVey and Rev Beverley Jamieson from St Mary's Church.

The crowd joined in a mixture of traditional Christmas carols and popular Christmas hits and there was even some festive "snow" to conclude proceedings which was organised by Lymm Parish Council supported by an army of volunteers.



Lymm Eye Clinic

Local, professional eyecare when you need it

A comfortable, friendly environment where all aspects of ophthalmology can be diagnosed and advised upon with the most up-to-date imaging equipment available.

No referral necessary, book your appointment online

www.lymmeyeclinic.co.uk

Tel: 07498 456312 | 1 Birchbrook Road, Lymm, WA13 9RR

Primrose Hill provide festive cheer for hospital charity

Primrose Hill Nurseries has donated £500 to Warrington and Halton Children's Hospital.

The donation was made possible by the amazing support for their Breakfast with Santa event at the Grappenhall Hey's Walled Garden Café.

Thank you to everyone who attended and made this contribution possible.

Adam Halford from Primrose Hill is pictured presenting the donation to Helen Higginson, Head of Fundraising at the charity.



ACCOUNTANTS IN CULCHETH WARRINGTON

Are you looking for
progressive
accountancy, business
and tax advice?

Speak to one of our
experts:
01925 761 600

or visit us at:
stylesandco.co.uk

**FORWARD THINKERS.
TRUSTED ADVISORS.**



MAXIMISE YOUR SPACE WITH £600 OF FREE STORAGE

Offer ends 28th Feb 2025

*Terms & Conditions apply



Call now
for a
free estimate:

**01925
211308**

DREAM DOORS® NEW LIFE FOR OLD KITCHENS



- Up to 50% less than a new fully fitted kitchen
- Replacement kitchen doors
- Cost effective made to measure solution
- Worktops and appliances
- Quick installation in 2-3 days by local professionals

MODERN

CLASSIC

TRADITIONAL

CONTEMPORARY

92 Knutsford Road
Warrington, WA4 2PJ
warrington@dreamdoors.co.uk

9.8/10

Checkatrade.com
Where reputation matters

Action plan underway to help those in

AN MP and local councillors braved freezing temperatures to support boaters whose lives have been devastated by the breach of the Bridgewater Canal.

The canal collapsed causing thousands of gallons of water to flood out of the canal in the breach caused by an embankment collapse during storms over New Year.

Properties had to be evacuated and boats were stranded as a result. The Canal and River Trust was forced to issue a statement explaining it is run by the

By Helen Bennicke

Bridgewater Canal Company part of the Peel Group based at Trafford. Local Cllr Graham Gowland said: "A number of local politicians, including Esther McVey MP met with those impacted by the breach of the

Bridgewater at Little Bollington "We took away an action plan for immediate support needs and will progress this over the next few days.

"Immediately everyone is safe, which is great. We'll update as appropriate.

"In the meantime, please keep away from the boats by Ye Old No3. If you plan on going to see the breach, the towpath runs on the North side of the canal, and you can't see the breach from this side.

"I understand access is probably not safe on either side, but it impacts the boaters less if you go on the north bank. There are "footpath closed" signs on both sides."

Expressing their dissatisfaction online about the lack of communication from Peel, one disgruntled boater said: "I moor on the Bridgewater Canal but I am one of the lucky ones protected by the planks installed.

"The devastation this breach has caused is so sad to see and the short-term effect is already clear."

The boater said they feel for the people whose homes have been flooded, businesses already affected and narrowboats unable to move who are "marooned and stuck for the foreseeable future."

The effect on the environment and wildlife is also "sad to see."

The boater criticised the "zero presence" from Peel after the catastrophic event.



Canal breach reveals some interesting finds!

THE devastating breach of the Bridgewater Canal at Little Bollington near Lymm has revealed some interesting finds.

As well as car bumpers and bicycles, Lymm resident Jon Hobson was shocked to find a giant Crayfish alongside fresh water mussels.

They were spotted by the cable bridge near Agden, where the canal breached.

Jon said: "The mussels are all over, but there's some big specimens dotted about on the bottom!"

The one-clawed Crayfish is understood to be a Signal Crayfish.

Meanwhile, dramatic footage of the canal breach was captured by Taylors Abroad and published on Youtube.

It gives the account of their frightening experience as the events unfolded in real time of the 2025 New Year's Day Bridgewater canal breach at Little Bollington.

The breach took place after 16 hours of non-stop heavy rain, that filled the canal up so much that it was going above the towpath and flooding over. This put so much pressure on a 260-year-old canal embankment that it completely collapsed into the worst breach since 1971, when the canal breached in the exact same spot!

The footage was captured by Josh Taylor who lives on a 70ft Narrowboat with his Parents, Diane and Andy. Together they travel the beautiful waterways of the UK.



Footpath closures brought into force

A number of footpath closures have been brought into force to protect members of the public while recovery operations continue following the breach of the Bridgewater Canal near Little Bollington.

Cheshire East Council is continuing to work with partner agencies following the damage to the Bridgewater Canal and a number of public footpaths in the surrounding area have now been closed.

This is for health and safety reasons and to protect members of the public while the recovery operation continues.

Notices have been put up in the areas where the closures are and include the plan below (closures marked in purple) of the various footpaths affected, as there are a number of routes that lead into each other. The towpath also remains closed.

The closures will initially be for 21 days but will be kept under review.

A Cheshire East Council spokesperson said: "We continue to ask people to avoid the area and to observe the various closures that are in place – please do not attempt to remove any cordons or barriers. This is for your own safety and for the safety of others.

"Thank you for your patience."

The breach of the Bridgewater Canal on New Year's Day devastated the local area and has left many boaters stranded.



Impacted by Bridgewater Canal breach

They added: "Perhaps I am being too optimistic but I genuinely hope this beautiful area of natural beauty and important heritage can be restored regardless of cost."

Lymm Life contacted owners the Bridgewater Canal Company and Peel for comment but received an automatic reply which read: "The team are busy dealing with the Breach at Dunham. As this is a live situation, we are unable to give any updates at this present time."

"The Bridgewater Canal team are working as part of the Strategic and Tactical Command Groups chaired by Cheshire Police to ensure a joined-up approach is undertaken to make the area safe and any affected parties are identified and assisted."

"Whilst we continue to undertake emergency action, we ask that people stay away from the affected area and respect both canal and road closures."

"For any other canal-related matters such as licence and moorings we will respond in a timely manner."

The last time the canal breached was 54 years ago in 1971.

Opened originally in the 1770s to provide a trade route from Manchester to the Mersey estuary and the sea beyond.

Since the decline of the canal as a trade route, it has been used by boaters using it for leisure.



PRIESTLEY
◆◆◆ COLLEGE ◆◆◆
WARRINGTON



Open Event

Year 10s & 11s welcome

Tue 4 Feb

Year 10s and Year 11s are welcome to join this open event to learn more about the **70+ courses** that are on offer at Priestley as well as discover more about the wide range of **Specialisms** available ranging from our **High Achievers' programme** to the **NHS Cadet scheme, Sport Academies and Journalism**.

For times - and to book your place - scan the QR code



Chess champion retains title after thrilling final

LYMM High School's reigning Chess champion, Ambrose Lam, once again proved his mastery of the board, retaining his title against fierce competition.

In a nail-biting final, Year 10 Ambrose faced off against science teacher, Mr Blackburn. The match began with an unexpected twist,

Ambrose lost the first game to Mr Blackburn, who played a bold and aggressive opening.

The audience, a mix of students

and teachers watching the live broadcast, held their breath as the second game commenced. Ambrose, known for his calm and analytical approach, regrouped and delivered an ex-traordinary performance in the next two games.

His precise moves and strategic planning turned the tide, culminating in a stunning comeback to secure his victory once again. The final move was met with applause from everyone watching,

solidifying Ambrose's legacy as the school's chess champion.

The tournament has become an annual tradition, sparking enthusiasm and preparation for next year's competition. The buzz around the Chess Club is palpable, with students and teachers alike already devising strategies and brushing up on their skills.

Who will rise to challenge Ambrose next year? The countdown has begun!

Incredible response to school's shoe box appeal

THANKS to the generosity and kindness of students at Lymm High School, a grand total of 135 shoe boxes were filled with thoughtful gifts and donated to those in need at Christmas.

Working in partnership with the Manchester Street Angels, students were able to spread some much-needed cheer to a variety of people – including homeless individuals, children, elderly residents and even dogs!

From warm hats, socks, and toiletries to toys, books, and treats for furry friends, every box was packed with love and kindness.

Students went above and beyond to make this initiative a success. Whether it was gathering donations, carefully wrapping each box, or spreading the word, it was clear that the spirit of giving was alive and well at Lymm High.

This year's effort is a true reflection of the compassion and community spirit that thrives within the school. Each shoe box represents a little bit of hope, joy, and support for those who need it most.



**DOES
YOUR
KITCHEN
NEED A
MAKEOVER?**



Up to 50% less than a newly fitted kitchen

80% of people in the UK choose a **KITCHEN MAKEOVER** over a **NEW KITCHEN** because they can achieve the same results, at half the cost. Why not join them this **NEW YEAR** and find out how we can save you money?

For practical advice and a no-obligation quote, book your free home visit on

01942 571018

or via www.jaxonrosemakeovers.co.uk



JAXON ROSE
MAKEOVERS

Kitchen showroom located in the far-right hand corner of the outdoor garden area at Bents
Open 7 days

Looking to grow your team? Hire an apprentice - it won't cost a penny!*

Are you an employer paying into the apprenticeship levy?
If you answered yes, recruiting an apprentice could cost
you absolutely nothing!*

We'll help you find the perfect candidate, matching you with
motivated, talented individuals who are eager and ready
to start their careers with your business. Apprentices are a
fantastic way to invest in fresh talent while developing the
skills you need to grow.

We have apprentices ready to start their careers in the following areas:

- Accounting
- Brickwork
- Data & ICT
- Hairdressing
- Marketing
- Plumbing
- Team Leading
and more!

Why wait? Apprenticeships are a win-win for you and the future of your team!

Get in touch with our Apprenticeships Team today to start
recruiting.

01925 494 271
apprenticeships@wvr.ac.uk
wvr.ac.uk/employers



Warrington
& Vale Royal
College



*Eligibility criteria apply.

Advance your career with Online Leadership & Management (ILM) qualifications!

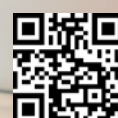
Looking to level up your leadership and management skills? Our online ILM courses
offer the flexibility to learn at your own pace, with convenient class times and
excellent tutor support to guide you every step of the way.

Starting in February, we're launching a new **ILM Level 7 Certificate for Executive,
Senior Level Coaches & Mentors** - perfect for those in senior positions looking to
gain an accredited qualification as part of their professional development.

Don't miss out on this opportunity to enhance your leadership capabilities and
boost your career!

Interested? Get in touch today to learn more and enrol!

Call our Learner Services team on: 01925 494 400,
email: learner.services@wvr.ac.uk or visit: wvr.ac.uk/adults.



FAMILY RUN BUSINESS • ESTABLISHED IN 1998

The **M6** Bed Warehouse

THE BIGGEST BED SHOP IN CHESHIRE



ALSAGER STORE

RADWAY GREEN BUSINESS PARK - CW2 5PR



NORTHWICH STORE

WINNINGTON BUSINESS PARK - CW8 4DL

Over 160 Beds on Display • Free Delivery & Free Disposal • Instore & Online

Tel: **01270 879379** • **www.m6beds.co.uk**

115-120 The Courtyard, Radway Green Business Park, Alsager, Cheshire, CW2 5PR

Winnington Business Park, Winnington, Northwich, CW8 4DL

Lymm High School recognised as one of top 10 schools in the region

OFFICIAL GCSE data by the Department for Education (DfE) has once again comfortably revealed that Lymm High School is in the top ten mixed comprehensive schools in the North West.

Coincidentally the publication of the Sunday Times 'Parent Power' league tables, ranked Lymm High School as the 4th best comprehensive school in the North West – using a combination of GCSE and A' level data.

This all comes off the back of being recognised in the Daily Mail's top 100 state schools last year.

Head Teacher Gwyn Williams said: "We are delighted to have been recognised again by the Sunday Times as one of the top schools and Sixth Forms in the region."

"A lot of people have worked very hard over the past few years to put us in this position and it's very much been a collaborative endeavour between staff, parents and students."

"There's no getting away from the fact that exam results really matter and it's always great to see GCSE and A' level students realising how many more doors are open to them as a result of their academic success."

"Everybody can feel justifiably

proud of their efforts and this recognition just helps provide a little boost in terms of pressing on with further improvements."

Mr Williams added: "We are even more pleased with the details of the official Department for Education data that was published which shows that students didn't just achieve very high grades but also that students of all abilities made exceptional progress during their time at Lymm High School. Equally, the consistency of high performance across all the main subject areas was fantastic to see – again, the product of much hard work by so many people in our community."



Exemplary Sea Cadet receives Lord Lieutenant's Cadet Award for Endeavour

A young Sea Cadet from Thelwall has been presented with the Lord Lieutenant's Cadet Award for Endeavour in recognition of her exemplary endeavour.

For Lymm High student Grace Moss aged 18, was successfully selected to receive the award during a formal presentation at Tatton Hall with her parents Fiona and Mike Moss.

The awards are given to volunteers and cadets in recognition of their outstanding service.

Her nomination stated that Cadet Petty Officer Grace Moss had demonstrated an exemplary commitment to service during her four years, nine months in the Sea Cadets, achieving notable milestones such as the Gold Duke of Edinburgh Award and the highest rank in the Sea Cadets.

Her dedication to the catering branch coupled with support

courses for younger cadets showcases her selflessness and commitment to the welfare of others.

Chief Petty Officer Moss's extensive training, included completing four off-shore week-long voyages, being one of the first cadets from Warrington to earn Level 2 BTEC awards and uniquely achieving her Aviation Wings, reflecting exceptional skills and determination.

Noteworthy in her leadership role in instructing young Cadets, displaying discipline, ingenuity and effective time management during unit, district and area courses and camps.

The Priestley College student has excelled in representing her unit and district in various competitions and community events.

She is utterly dedicated and committed to the Sea Cadet Corps.



Divorce Column

By Peter Wilkinson

Divorce Lawyer at Chambers Fletcher Solicitors

Do I need a Solicitor to get divorced?

This is a question which is sometimes asked and often, understandably, due to financial concerns regarding legal fees.

The short answer is that you do not have to have a solicitor to get divorced – but beware false economy. Saving some expense on fees in the short term can result in more money being spent, or lost, in the long term. This could be on taking corrective action to put right something which has gone wrong or perhaps by settling a financial claim at an undervalue.

You are entitled to 'have a go' at acting for yourself and if you do you will be known as a litigant in person. Some litigants in person will find it easier than others to navigate their way through a legal process but rarely does a litigant in person properly understand all that's involved and how best to deal with all aspects. In particular a litigant in person can soon find themselves out of their depth dealing with ancillary matters such as financial issues and child arrangements.

It can be a costly mistake to underestimate the benefit of having legal representation. Also, I think it's fair to say that where one party is legally represented but the other is not then the playing field is not a level one.

Getting divorced is a legal process and it usually involves more than just the actual divorce itself. Often there will be financial or children's matters to deal with and while some cases might appear to the layman to be straightforward the reality is that most are not. Family law is complicated and without a proper understanding of the law, practice and procedure it is likely that at some point you will come unstuck. Disagreements or complications are common and having a solicitor on your side can help in protecting your interests and in achieving best possible outcomes.

For advice and assistance regarding divorce and related matters please get in touch – we are experienced and expert in this area of law.

Family Law & Divorce Residential Property Commercial Property Wills, Trusts & Probate



Peter Wilkinson



Stephen Worrall

01925 359005
www.chambersfletcher.co.uk

Cambridge House, Suite 4, 16 Walton Road,
Stockton Heath, Warrington, WA4 6NL

Festive fun at Manor Road Tennis Club



Lymm Manor Road Tennis Club's members enjoyed an afternoon of Tennis, Fun and Festive food with friends at their Christmas 'do'.

Why not go and have a look at the excellent, floodlit 'Tiger Turf', all-weather courts in the beautiful

Walled Garden of Lymm Rugby Club and try your hand at winter tennis? A warm welcome for all

ages is guaranteed!

For further information please

visit <http://clubspark.lta.org.uk/ManorRoadTennisClub>

Budding author collects Cheshire Prize for Literature for the second year running



BUDDING author Jack Waring has been awarded the Cheshire Prize for Literature for the second year running.

The Year 7 Lymm High School student went to Chester University to pick up his award for the short story category. He also won the award in 2022.

To win the prize one year is fantastic, but to win it two years running is an amazing achievement!

The story he wrote this year was published in the 2024 Anthology Passages of Time, which features shortlisted entries (stories, poems and scripts that all follow the theme of time) from the 2023 Cheshire Prize for Literature.

The Prize was inaugurated in 2003 as the High Sheriff's Cheshire Prize for Literature. It is administered by the University of Chester. Details of the prize are available at www.chester.ac.uk/about/events/cheshire-prize.

"It was extremely heart-warming to hear of Jack's recent accomplishment", says his Head of year Miss Taylor.

"As a Head of Year, I feel a sense of pride for all students within my year group who go above and beyond the way that Jack has done by entering this competition. I think it's really important to celebrate these successes, and hope that he continues to pursue his passion for writing over the coming years."



**CHESHIRE
GOLD
XCHANGE**

SELL YOUR GOLD & SILVER TODAY!

ITEMS WE BUY:

- Jewellery
- Bullion
- Coins
- Silverware
- Pocket Watches
- Watches
- Asian Gold

VISIT US:

3 London Road
Stockton Heath
Warrington
WA4 6SG



SELL IN-STORE & ONLINE

01925 387 107

CHESHIREGOLDXCHANGE.CO.UK

Need IT Support at Home?

- Skilled and Friendly Technicians
- PC and Laptop Support
- Home Visit or Remote Dial-in
- Antivirus/Malware Check
- Unlimited Support Time
- Equipment Supplied: Laptops, PCs, Printers & Bespoke Builds



aspire
Computers Ltd

Call our Team: 01925 251143

sales@aspire-computers.com | www.aspire-computers.com

CLASSIFIED

Call 01925 631592 to advertise

ACCOUNTANCY & BOOKKEEPING

BOOKKEEPER/ACCOUNTANT. Licensed for maintaining financial records, VAT Returns, Payroll Service, Management Accounts, SAGE Software Consultancy. **Contact: 07815 617914.** (G*)

CARPET CLEANING

A1 STAINBUSTERS. A Warrington company cleaning carpets, hard floors, Upholstery (Leather + fabric) and curtains in situ. FREE quotes for domestic and commercial. Approved carpet cleaners for Hancock and Woods for over 10 years. **Call John on 07765 314080** (J6/23)

SIMPLY THE BEST CARPET CLEAN YOU will ever have. Cleaners UK Ltd. Est over 35yrs. Have your carpets & sofas beautifully deep cleaned leaving them fresh smelling & colour restored. Latest & best methods. Dry/steam. Leather cleaning, oriental rug specialist. Professional, reliable & affordable. **For more info call Neil Riley on 01925 264989 / 07831 336060 www.cleaners-uk.net** (J4/24)

CAR SALES

PARKVIEW CAR SALES

We buy and sell QUALITY CARS

Best price paid

Telephone Peter on 01925 575737 / 07957 545479

23 Padgate Lane
Padgate, Warrington
Cheshire, WA1 3RS (G*)

CLEANING SERVICES

arleys angels

- Spring Clean Specialists
- Presenting your home for sale
- Moving house
- After building work cleans

01925 266834
... because you're worth it! (G*)

CLEANING SERVICES

SIMPLY THE BEST CARPET CLEAN YOU will ever have. Cleaners UK Ltd. Est over 35yrs. Have your carpets & sofas beautifully deep cleaned leaving them fresh smelling & colour restored. Latest & best methods. Dry/steam. Leather cleaning, oriental rugs specialist. Professional, reliable & affordable. **For more info call Neil Riley on 01925 264989 / 07831 336060 www.cleaners-uk.net** (J4/24)

GARDENING SERVICES

Beechwood Industries

www.beechwoodindustries.co.uk

01925 860544 (G*)

- All aspects of tree surgery
- Stump grinding
- Waste removal
- Locally based
- Free quotation

PHOTOGRAPHY

FAMILY & PET PORTRAIT PHOTOGRAPHY
Lymm based Andrew Collier Photography specialises in family and pet portrait photography using Lymm locations as a backdrop. Personal service with beautifully made frames and albums. **Call Andrew on 01925 471091 or visit www.andrewcollierphotography.co.uk** (G4/22)

PAYROLL

WHY TRY TO BE A PAYE EXPERT?
Watkinson Black can provide a cost effective payroll service, releasing you to concentrate on your business. **For further details please phone: 01925 413210 or e-mail: info@warringtonaccountants.co.uk** (G*)

Established 1878

John Burrows & Sons
Fourth Generation Independent Family
Funeral Directors

Friendly & Professional Service
Day or Night ~ J. Tandy

The Old Smithy, Mill Lane, Lymm,
WA13 9SE **Tel: (01925) 752501**

Golden Charter Funeral Plans

www.johnburrowsandsons.co.uk

RE-UPHOLSTERY

Orchard Soft Furnishings

RE-UPHOLSTERY
CURTAINS • BLINDS

FREE MEASURING & FITTING

TEL: (01925) 756388
www.orchardsoftfurnishings.co.uk (G*)

TAXI / PRIVATE HIRE

Horn's

Airport Transfer & Taxi Specialists
CALL MARTYN: 01925 751761
MOBILE: 07881 786250 (G3/25)

TYRES

EVERGREEN Centre of Excellence

Express
Mobile Tyres

Local Family Business. Est 1997
01925 810000
www.expresstyres.co.uk
Order Online Today!

Branded & Budget Tyres
Cars, Vans, 4x4's, Caravans
Light Commercial
& Performance Vehicles

The tyre service that comes to you at home or your place of work

No Call Out Charge!

BRIDGESTONE MICHELIN
GOODYEAR Continental (G*)

To advertise in the classified section from as little as £15+vat

Call us now on 01925 631592

Obituary Notices

While Obituary notices are published free of charge, due to pressures on space, we can never guarantee they will be used and there can also be a delay of several months.

If you would like to guarantee a notice to appear in the next available issue, these can be purchased for £75 plus VAT which helps towards the running costs of your free community magazine.

To place an obituary notice or any other public/family notice please email info@lymmlife.co.uk

Your notice will appear the same size as this advertisement.

twentyfour seven
design & print ltd

PRINT PROBLEMS SOLVED!

FLYERS • POSTERS

BANNERS • STICKERS

MAGAZINES

OFFICE STATIONERY

CUSTOM PRINTS • FOLDERS

CARDS • SIGNAGE

THE NEW MEDIA CENTRE, OLD ROAD, WARRINGTON, WA4 1AT
01925 240247 • INFO@247PRINT.NET • WWW.247PRINT.NET

The North West's leading supplier of concrete

www.barrowmixconcrete.com

BARROW - MIX

EST
1984



FREE SITE SURVEY

6 DAY SERVICE

All areas covered

Free barrowing service

Only pay for what you lay

From half a cubic metre upwards

Levelling/laying service if required

(minimum charge)

We can supply

C25, C30, C35 Fibre Reinforced



VISA

MasterCard

Maestro

SOLO

Call NOW for a FREE quotation
01565 734111 or 01942 722629