

Lymm Life

Magazine

ISSUE 304 | NOVEMBER 2024
DELIVERED FREE TO 5000 HOMES

Celebrating 25 years of free community news



urban

BUILDING PROJECTS LTD

**Extension &
Building Renovation
Specialists**

Tel: 01925 730888

www.urbanbuildingprojects.co.uk



**LYMM
PARISH
COUNCIL**

Approved by Lymm Parish
Council as the official
magazine for Lymm



**Chambers
Fletcher
Solicitors**

Family Law & Divorce
Residential Property
Commercial Property
Wills, Trusts & Probate

01925 359005

www.chambersfletcher.co.uk

Teenager follows her dream

Page 3

Lymm Eye Clinic

*Local, professional eyecare
when you need it*

No referral necessary,
book your appointment online

www.lymmeyeclinik.co.uk

Tel: 07498 456312

1 Birchbrook Road, Lymm

Regular news updates at www.warrington-worldwide.co.uk

Editor
Gary Skentelbery

Production
James Bryan

Advertising
James Balme
Telephone
01925 631592

Editorial
01925 623633

Email
info@lymmlife.co.uk

Websites
www.lymmlife.co.uk
www.culchethlife.com
www.frodshamlife.co.uk
www.warrington-
worldwide.co.uk
www.warrington.tv

Address
New Media Centre
Old Road Warrington
WA4 1AT

*Lymm Life is published
monthly by Orbit News Ltd.*

*The contents of this magazine
are fully protected by copyright
and nothing may be reprinted
or reproduced without prior
permission of the publishers.*

*The publishers are not liable for
any statement made or opinion
expressed by third parties in this
publication.*

Printed by TwentyFourSeven

Editor's Comment



TWO youths riding through the village on scooters with imitation firearms was one of a number of incidents involving anti-social behaviour at Lymm reported by local police to the monthly meeting of the parish council.

In a report to the council PCSO Sharon Perrie said Firearms officers had been called out to the incident on Barsbank Lane in the village but there was no trace of the offenders.

For the size of the village, Lymm seems to attract a lot of anti-social behaviour involving younger people.

I report on the whole town and apart from Warrington town centre, Lymm seems to have more anti-social issues than most areas of the town.

In another incident, a group of 10-20 youths had attempted to get into a horse box on Reddish Lane. Youths were searched and advised not to return.

In an unrelated incident, a group of 30 youths were playing music and being a nuisance at The Cross. There were also two reports of an off-road bike riding around the field off Sandy Lane. Other incidents of crime reported to the monthly meeting of the

council included three males being abusive towards staff at premises on Higher Lane. The males had left prior to Police arriving.

Regarding the anti-social behaviour issues involving younger people I would urge parents and guardians to keep a watch out on what your "little angels" are up to when they are out at night as we approach the dark winter months.

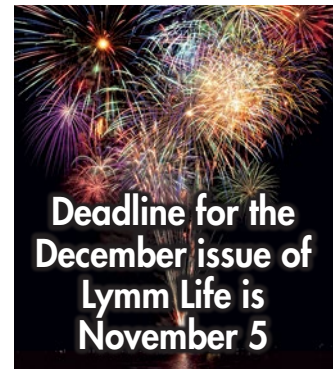
The last thing you need is them picking up a criminal conviction.

Meanwhile on a more positive note Christmas is fast approaching and there is no better event to get you in the mood than the annual Lymm Dickensian Day which this year takes place on Saturday, December 14.

Starting at the beginning of December we also can look forward to Lymm Rotary's annual Santa Sleigh touring the village spreading Christmas cheer while raising funds

for good causes.

Watch out for more details on both events in our December issue.



**Deadline for the
December issue of
Lymm Life is
November 5**

Lymm Roundtable Fireworks display

For 2024 Lymm Roundtable's Fireworks display will be held on Saturday 9th November 2024 at Cherry Tree Primary School, Hardy Road, Lymm, WA13 0NX.

Adult tickets - £14, child (under 16) - £7, under 3s - free.

Event opens at 6pm. Children's fireworks at 6:45, main display at 8pm.

Tickets can be bought online at www.tickettailor.com/events/lymmroundtable/1396231

N & J STANHOPE

Coal and Log Supplies

Smokeless Fuel • Kiln-dried Logs

Caravan Storage

Scrap Metal Wanted

Old Vehicle Batteries Wanted

Open 6 Days. Closed Sunday

Broomeedge Farm

Burford Lane, Lymm WA13 0SE

**Tel: 752830
Mobile: 07979 785 421**

Experience the Magic of Christmas at Primrose Hill Nurseries!

Explore Our Winter Wonderland Shop

**You won't want to miss the enchanting array of
Christmas decorations we have in store for you.**



PRIMROSE HILL
NURSERIES
Est. 1935

Warrington Road, High Legh, Cheshire WA16 0SQ 01925 752635



Teenager follows her dream by releasing debut EP from home

LYMM teenager Jaydine Tse followed her musical dream by releasing her debut EP containing five self-written, produced and recorded songs from home at the age of 16.

Now in her second year as a 6th-form student at Lymm High School Jaydine is studying Music Technology, Media Studies and English Language.

She has always been musical since a toddler, singing songs, making them up and pretending to play instruments. But when she was seven, she began learning to play the piano and is currently practising for her grade 5 examination.

At nine she started playing guitar and after a few lessons from her dad Daniel, she carried on teaching

herself to a very competent level and started singing along with her instruments and writing songs.

After being the lead role in her final year at Ravenbank Primary School, Jaydine has been involved in many Lymm High School productions including principal roles in the musicals and talent shows as well as representing the music department with singing and performances.

In 2019 at the age of 12, she made it through to the very last stages of The Kids Voice auditions

but unfortunately missed out on the TV performances which made her even more determined to focus on a career in the music industry.

Jaydine has a huge passion for songwriting and decided to release her debut EP 'Don't Let Me Cry' containing the 5 self-written, produced and self-recorded songs from home at the age of 16.

The songs display her beautiful voice as well as her instrumental talents and exhibit her natural talent to record and produce her own material with such a simple set up. If her style was to be described there would be a heavy influence from the worldwide music star Billie Eilish who is her idol but also many fragments of different era's and genres as her music knowledge and influences are vast with one of her favourite bands being The Beatles. Impressively the EP streamed almost 1000 times in just a month, quite a feat for a local recently turned 17-year-old girl with no publicists or promotional team!

Jaydine is now hoping to attend LIPA, The Liverpool Institute for Performing Arts next year, founded by one of her heroes, Sir Paul McCartney and would like to study more about the music industry as a whole and not just as an artist; including technology and journalism etc. She is fully aware how hard it is to make it as an established artist these days but



her passion for music is key to her future.

She hopes her music will be well received by the general public and has already had some fantastic reviews from sharing her material through social media outlets and would like to thank anyone who has or plans to stream her music which is available on all major streaming platforms such as Spotify, Apple Music and YouTube.

Jaydine can also be found gigging at a number of local venues and is regularly gigging around Cheshire; including Groobarbs in High Legh; The Church Green in Lymm and the Dog and Partridge in Paddington, and keeps followers up to date on her instagram page - @jaydinetsemusic.





LITTLER'S
VIDEO TAPE
CONVERSIONS
EST. 1957

SAVE YOUR IMPORTANT FILMS & MEMORIES

We transfer a wide range of tape types to DVD, USB & even Cloud!

Simply drop in your tapes and we'll call or email when they're ready!

We currently transfer camcorder, VHS, Video8, Hi8, Digital 8, Cinefilm VHS, DV, Mini DV, HDV & Betamax.

Leave it to a local, family firm to protect your films and tapes for years to come!





(01925) 814711

298-300 Manchester Rd, Warrington, WA1 3RF

WWW.LITTLERSTV.COM

MAKES A GREAT GIFT!

BULK RATES AVAILABLE



Professional tree services

Free Quote

- Domestic
- Commercial
- Site Clearance
- Vegetation management
- Stump grinding
- Re-planting
- £10m public liability insurance



Beechwood Industries
www.beechwoodindustries.co.uk

For more information, please call us on
01925 860544








What's On in conjunction with Lymm Parish Council



LYMM PARISH COUNCIL

Next meeting Tuesday November 12th, 7:30pm
Lymm Parish Hall
Check www.lymmparishcouncil.gov.uk for details.

LYMM THURSDAY EVENING BRIDGE CLUB

Lymm Village Hall every Thursday 7pm
Details: 07708 172015

MAPLE LODGE ART GROUP

Meet each Wednesday 9.30am - 11.30pm
Oughtrington Community Centre, Lymm
Details: 01925 755926

ROTARY CLUB OF LYMM

Meets at Warburtons Parish Rooms on the 2nd and 4th Wednesday each month at 8pm
Contact 01925 919053

LOVING HEARTS & HANDS

Knitting for charity at Lymm Methodist Church, 2nd and 4th Thursday each month. 1.30pm - 3pm. Details: 01925 753298

LUNCH AT THE BROW

Eagle Brow Methodist Church
2nd Friday in the month
Light lunches 12 noon till 1.30pm.
All proceeds to The Y Project Room at The Inn

GARDENING CLUB

Meet Third Wednesday of the month
Lymm Baptist Church, Higher Lane. 7.30pm
Visitors welcome. £2 includes tea and cake

LYMM FLORAL ART GROUP

Lymm Village Hall
Third Monday of the month (except August and December) at 7.30pm. Visitors most welcome. Contact: 07876 176501
lymmfloralart.org.uk

LYMM PHOTOGRAPHIC SOCIETY

Every 2nd and 4th Wednesday (ex Aug), 7.30pm
Spread Eagle pub, Eagle Brow.
See our rolling display in Lymm Library
Details: www.lymmphotosoc.org.uk

LYMM WINE AND BEER CIRCLE

3rd Wednesday of the month, 8pm
The Spread Eagle Hotel
Details: 01925 756444

LYMM CONCERT BAND

Rehearsals every Thursday evening
United Reformed Church, 8pm.
Details: 01925 752934

LYMM WI

Every second Wednesday, 2-4pm at Lymm Youth and Community Centre. Visitors welcome.

LYMM AND DISTRICT MIXED VOICE CHOIR

Every Wednesday 7.30 Lymm Methodist Church. Contact 01925 601664.
cath@cstones.co.uk

PROBUS CLUB OF LYMM

A small, friendly social club for retired people. Meets on second and fourth Tuesdays at 2:15pm.
Details: www.LymmProbus.club

LYMM DINGLE PROBUS CLUB

A friendly busy social club for retired men. Meets on alternate Thursday afternoons at Lymm Baptist Church.
Details: www.lymmdingleprobus.club
Club secretary 01925 759995

FRIENDS OF LYMM LIBRARY CRAFT GROUP

Lymm Sanctuary Hub
Fridays 1.30-3.00pm
Details: 01925 754016

HEATLEY WI

Meets the second Thursday of each month at Oughtrington Junior School, 7pm
Visitors welcome. Details: 01925 752014

LYMM & THELWALL U3A

Speaker meeting 3rd Thursday of the month (excluding August & December) at Thelwall Parish Hall 10.00am. Prospective members welcome.
www.u3asites.org.uk/lymm-thelwall/home
Contact: enquiries@lymmthelwallu3a.org.uk



LYMM PARISH COUNCIL

Tuesday November 12th, 7:30pm
See parish council website for details.

WI provide boost for church garden

LYMM Jubilee WI got September off to a great start with a donation to their chosen charity for 2024, St Mary's Church Hall Garden.

President of Lymm Jubilee WI, Linda Skett, presented Church Warden Kath Buckley, with a cheque for £500.

Kath was was delighted to

receive the cheque on behalf of the charity. She thanked members and explained that this amount of money would make a huge difference to a small local charity.



Coffee morning raised £300

A SPECIAL coffee morning at The Limes, in Booths Hill Close, Lymm, raised £300 for St Rocco's Hospice, Warrington and Macmillan Cancer Care.

Homeowners at the McCarthy Stone retirement development hosted friends, family and passersby to tea, coffee, cakes, etc.

There was also tombola, greetings cards and bric-a-brac stalls.

The takings were divided equally between St Rocco's and Macmillan – and unsold items were donated to the St Rocco's charity shop in Lymm.



DELICIOUS MILK DELIVERED TO YOUR DOOR!

POOL FARM, LYMM

YOUR LOCAL DAIRY Est. 1932

Fresh, quality milk delivered to your doorstep.

A variety of local produce. *Everyone at the farm would like to congratulate Gary and the team on 25 years of Lymm Life!*

Early morning deliveries.

Call 757655 or email milk@broadsmith.com for our prices!

G P BROADSMITH & SON
POOL FARM, POOL LANE,
STATHAM, LYMM, WA13 9BW
TEL: 01925 757655

Call us on: 01942 607250
www.elbfireplaces.co.uk
70 Twist Lane, Leigh, Lancashire WN7 4DP

Fire Surrounds, Stoves, Gas & Electric Fires

Established 40 YEARS

No need to change your carpet - made to measure fireplaces

Over 75 displays over 2 floors

Live wood burning stove on display

Is your conservatory too cold to use in Winter?
Why not install a stove?

ESTHER MCVEY MP

Member of Parliament for Tatton

I hold regular constituency surgeries around the area.

To make an appointment please call **01625 529922** or email officeofesthermcveymp@parliament.uk

Promoted by Angela McPake on behalf of Esther McVey MP both of 1 Canute Place, Knutsford, Cheshire WA16 6BQ. Funded through the allowances made available to the Member of Parliament.



Turn your house into a home with our selection of Shutters, Blinds, Little Greene Paint and Wallpaper and Home Furnishings

Visit us today at:

4 Framingham Road, Brooklands, M33 3SH | Tel: 0161 962 7255

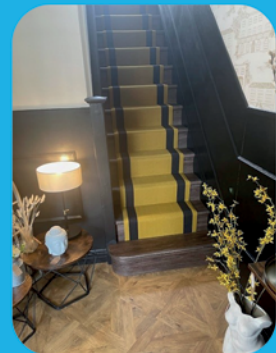
E: enquiries@inspiredbymay.co.uk | W: www.inspiredbymay.co.uk

@inspiredbymayhomefurnishings

wilde & sons

CONTRACT AND DOMESTIC FLOORING

A FAMILY RUN BUSINESS WITH OVER 25 YEARS EXPERIENCE



WE SUPPLY AND FIT HIGH QUALITY BRANDS INCLUDING KARNDUAN, ALTERNATIVE FLOORING, WESTEX AND MORE

VISIT US TODAY AT

6 EASTWAY, SALE, M33 4DX | TEL: 0161 973 7868

4 FRAMINGHAM ROAD, BROOKLANDS, M33 3SH | TEL: 0161 962 7255

E: enquiries@wildeandsons.com | W: www.wildeandsons.com | @wildeandsonsflooring

ACCOUNTANTS IN CULHETH WARRINGTON

Are you looking for
progressive
accountancy, business
and tax advice?

Speak to one of our
experts:
01925 761 600

or visit us at:
stylesandco.co.uk

FORWARD THINKERS.
TRUSTED ADVISORS.



Air cadet one of first to complete relaunched Pilot Scholarship

AN air cadet from Lymm is one of the first four to complete the newly relaunched RAF Air Cadet Pilot Scholarship (ACPS).

Sam Able is a Flight Sergeant in 2137 Lymm Squadron RAF Air Cadets.

He completed the scholarship by flying the Tutor T1 aircraft solo and gaining his Gold Flying Badge.

It was the first course delivered on the Tutor by the RAF's No 6 Flying Training School and marks the first time ever that cadets have flown the Tutor T1 solo.

Sam is considering a career in the RAF after spending many years with the Air Cadet, first gaining his Glider Wings and now taking his first steps on the ladder to flying engined aircraft.

He was invited to dinner at the House of Lords in recognition of his achievements with the Cadets as well as meeting Tom Cruise at a summer air show.



Scan for all the
latest news



**SPRING
FLOWERING
BULBS**

**AUTUMN
COLOUR**

**CHRISTMAS
WREATH
WORKSHOPS**



**E. Smith and Son
Plant Centre**

Open Monday to Friday 10am to 4pm
Sunday 11am to 3pm

Find us on Facebook, Instagram and
lymmplants.co.uk

Booths Lane, WA13 0PF
5 minutes' drive from Lymm Village

NEWS



LYMM
PARISH COUNCIL

OCTOBER - NOVEMBER 2024

Residents of Lymm

I hope you all are well and refreshed after the summer recess. Autumn is with us and the Parish Council is gearing up for a busy season filled with important meetings and community events.



Following approval from our insurance company, we are pleased to announce that the public toilet at Lymm Dam has been removed following fire damage. The unit is being refurbished and will be reinstalled within a few months.

We would like to welcome two new team members. Warren, our new Environment Team staff member, brings a wealth of experience to the team and will be working with us to enhance our local environment. Our new Assistant Clerk, Dan Wheatcroft, joined us in August and will be clerking planning committees and managing the allotment sites amongst many other tasks.

The installation of new road setts on Pepper Street is still ongoing and we thank residents for their patience and understanding over the past few months. This project not only improves the aesthetics of the road but also enhances the area. It has been difficult, the weather hasn't helped, but the Borough Council is keeping us updated on the timetable of works.

For all updates, visit www.warrington.gov.uk/pepper-street-lymm

The second round of grants aimed at supporting community projects has been approved. Several local charities and community events have been awarded grants within the budget of £12,000. The next round of grant funding applications will be considered in March 2025 following a budget review at the end of this year.

Our Environment team will again be placing poppies on lampposts throughout the village to commemorate our annual Remembrance celebrations. This is a time to honour and remember those who have served our community. Planning for Remembrance has also started, and we are hoping the new flagpole at The Cross will be in situ in time for this important event.

The increased wildflower beds including at Ridgway Grundy Park and on Rushgreen Road have been wonderful this year and we have been delighted with the response from local residents. We look to increase these next year.

Our Environment Team, with approval from Warrington Borough Council and St Mary's Church, have started to look after and tidy up the Churchyard at St. Mary's, complementing the Borough Council's 3-weekly rota of maintenance.



Our volunteer event on the 28th September was a resounding success, with over 15 local organisations in attendance and many new volunteers signing up. It's always a good time to get involved with volunteering in your village, with so many events and activities taking place.

Scan the QR code for more information.



Christmas season is almost upon us, and, as usual, there will be all your classic Lymm celebrations to come! More details of dates/times will be on the Parish Council's website nearer the time, along with all our current news and information.



If you would like to donate towards the Christmas decorations that make our village look so fabulous and festive, please scan the QR code.

Your contribution will be greatly appreciated.

Thank you for your continued support and engagement which are vital to the success of our community initiatives.

Warm regards,

Cllr Ann Johnstone, Chair & Cllr Sally Sharma, Deputy Chair



DREAM DOORS®
NEW LIFE FOR OLD KITCHENS

In your home for Christmas

SAVE £600 WITH A FREE OVEN & HOB

Offer runs from 1st November to 22nd December 2024

*Terms & Conditions apply - Offer only applies to selected ovens and hobs.

MODERN

CLASSIC

TRADITIONAL

CONTEMPORARY

Up to 50% less than a new fully fitted kitchen
Replacement kitchen doors
Cost effective made to measure solution
Worktops and appliances
Quick installation in 2-3 days by local professionals

92 Knutsford Road
Warrington, WA4 2PJ
warrington@dreamdoors.co.uk

Call us now for a free estimate:

01925 211308

Checkatrade.com 9.8/10
Where reputation matters

Follow us on Facebook: dreamdoorswarrington

dreamdoors.co.uk THE UK'S #1 KITCHEN MAKEOVER COMPANY

Manor Road Tennis Walkers win championship



(L to R) Jayne Huxley-Grantham (Cheshire Tennis EDI Lead), Team pairs Susan Sinclair & Beryl Davies (Culcheth TC), Elaine Dunnet & Mark Courtney-Smith (Birchwood) and Kevin Shields & Mark Schneider (Lymm Manor Road TC), Pat Shields (Cheshire Tennis committee member)

Lymm Manor Road Walking Tennis pair Kevin Shields and Mark Schneider, were part of the winning team representing Cheshire in the inaugural '3 County Walking Tennis Tournament' between Cheshire, Shropshire and Hereford and Worcester.

The other pairs representing the County which took place at the Cathie Sabin Indoor Centre at The Shrewsbury Club were from Birchwood and Culcheth Walking Tennis Clubs. It is hoped that there will be more friendly competition opportunities between Cheshire groups going forward.

Walking Tennis is suitable for all with no previous experience necessary and is perfect for beginners and those recovering

from injury, who have restricted mobility or for those wishing to return to tennis in a gradual way.

If you would like to try Walking Tennis please come down to Lymm Rugby Club's Walled Garden on Thursdays between 1pm and 3pm and play on new all-weather floodlit courts. The session is followed by refreshments and a chat and is open to non-members on a Pay and Play basis.



SIXTH FORM OPEN EVENING



Thursday 14th November 2024

5.00pm to 8.00pm

www.lymmhigh6thform.org.uk

OUGHTRINGTON LANE,
LYMM, CHESHIRE, WA13 0RB

01925 755458



Lymm High School Alumna Emily Chapman brings fresh vision to local dental practice

Emily Chapman, a proud Lymm High School alumna, has come full circle by acquiring Lymm Dental, the very dental practice she visited as a child.

After studying dentistry at the University of Birmingham and undertaking postgraduate training in aesthetic dentistry, Emily has returned to Lymm, bringing a fresh vision and renewed commitment to local, personalised dental care.

Formerly owned by Joanne Bramham-Smith, Lymm Dental now boasts a modern rebrand as Flourish. The practice builds on the high standards of care provided by Joanne but features a refreshed waiting area, a brand-new dental chair, and the latest equipment. Emily's goal is to create a welcoming and friendly environment for all patients, with a special focus on children and those with dental anxiety.

In response to recent changes in the local dental landscape, including various retirements and transitions of ownership to corporate entities, Emily is

thrilled to introduce Flourish as a locally owned alternative. As a dedicated professional, Emily was disheartened to discover that no additional NHS funding was available to support the local community. With this in mind, she established Flourish to provide advanced, innovative, and affordable dental care, with plans starting from just 38p a day. "We're excited to offer a local, independent option for dental care in Lymm," said. "Our focus is on delivering high-quality, personalised care in a friendly and supportive environment. We invite the community to experience the newly enhanced Flourish at Lymm Dental and support local businesses."

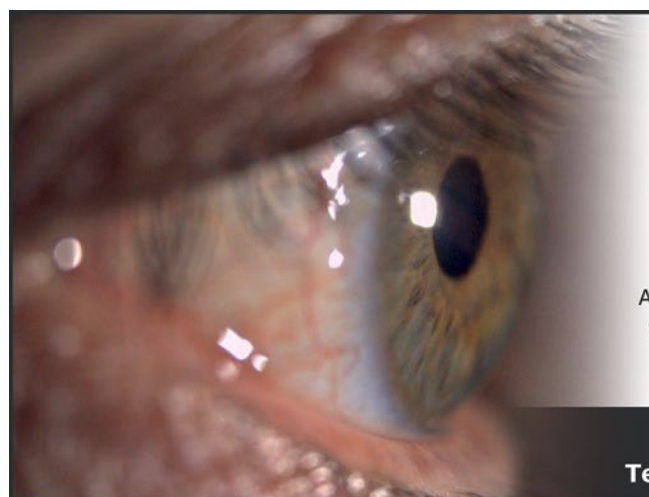
Residents of Lymm are encouraged to visit Flourish and benefit from the enhanced services and affordable care options, with

the reassurance that continuity of care is guaranteed as the practice is owned by a fellow Love Lymm Local! For more information or to book an appointment, please contact:

Flourish at Lymm Dental
1 Henry Street, Lymm WA13 0LS
01925 756690
info@flourishatlymmdental.co.uk

www.flourishatlymmdental.co.uk

About Flourish at Lymm Dental
Flourish is a locally owned dental practice in Lymm, dedicated to offering personalised, high-quality care with a focus on making patients feel valued and cared for. Under the care of Emily Chapman, the practice continues to uphold its commitment to the community.

Lymm Eye Clinic

Local, professional eyecare when you need it

A comfortable, friendly environment where all aspects of ophthalmology can be diagnosed and advised upon with the most up-to-date imaging equipment available.

No referral necessary, book your appointment online

www.lymmeyeclinik.co.uk

Tel: 07498 456312 | 1 Birchbrook Road, Lymm, WA13 9RR

Tolls suspended as work starts on Warburton Toll Bridge upgrade

WORKS to modernise the Warburton Toll Bridge near Lymm were scheduled to start on Tuesday 22 October, with toll charges already suspended for the duration of the works.

The works are set to proceed following approval from the Department for Transport to upgrade the bridge and update the toll rate, the outcome of an inquiry held by the Department into the matter in 2022.

Motorists in the area should allow extra time and/or use alternative routes and be aware that full closure may be required at times.

In approving the toll update, the Department for Transport agreed the bridge needs extensive repair work and renovations to provide a modern crossing for road users, which will improve reliability and cut journey times.

There will be a discount scheme in place for local residents once the upgrade works are complete and the toll is restored. The new toll will cover future maintenance and repair work, required to ensure the bridge remains safe and operational.

The current 12p toll rate, one of the lowest in England, was set by an Act of Parliament in 1863.

Local users and Warrington Borough Council were dismayed over proposals to increase tolls from 12p to £1, although a 50% concessions will be available in the local area.

A spokesperson for the Manchester Ship Canal Company, which owns and operates the bridge, said: "At present we have a 19th century toll that is incapable of supporting the demands of a 21st century road user. The road users in Warrington and Trafford have long demanded a modern crossing that meets their needs, and that is what these works will deliver. The toll rate has not changed in 161 years – we estimate that, had it kept up with inflation, the toll would now be around £15 rather than the £1 it will be when the works are complete."

"Any improvement works involve a degree of disruption, so although this is inevitable, we apologise for any inconvenience and thank all road users for their patience."

The works are expected to last for at least a year, though they are subject to weather conditions, availability of supplies and other factors that affect construction projects.

An advertising campaign will alert the public to the works and any major updates throughout the duration of the project.

More information will be available from www.warburtontollbridge.co.uk/ with an option to register for email updates.

Peel Ports have been granted an order under the Transport and Works Act 1992 which now permits them to:

- Increase the toll from 12p for a one-way trip up to a maximum of £1 each way.
- Ensure that users of the bridge will pay in full for the improvements to the bridge. The council argued that the costs should be split between Peel Ports as the owner of the bridge and users – this was rejected.
- Use the increased toll to put in place the installation of an

automatic toll collection system, which will allow Peel Ports to collect tolls from motorists and take enforcement action against anyone who doesn't pay. This would operate in a similar way as happens on other bridge crossings with the most prominent local example being the Mersey Gateway bridge.

- Increase the toll in future by 1% below the Consumer Price Index (CPI).
- Transfer the bridge into a separate company.



Rightio Plumbers

01925 671 294

OUR SERVICES

- ✓ Boiler Breakdowns
- ✓ Boiler Servicing
- ✓ Radiators & Pipes
- ✓ Tanks & Cylinders
- ✓ Toilets & Taps
- ✓ Leaks & Bursts
- ✓ Showers
- ✓ Clearing Blockages
- ✓ Gas Safe Certified
- ✓ Pipework Replacement

We work in Lymm and all surrounding areas.

- ✓ Fast Response
- ✓ All Work Guaranteed
- ✓ Highly Experienced
- ✓ Clear Pricing

12 Month Guarantee on labour!
Excludes blockages

OAP Discount
Speak to us today!

1-2 Hour Response time!

650921

CHESHIRE GOLD XCHANGE

SELL YOUR GOLD & SILVER TODAY!

ITEMS WE BUY:

- Jewellery
- Bullion
- Coins
- Silverware
- Pocket Watches
- Watches
- Asian Gold

VISIT US:

3 London Road
Stockton Heath
Warrington
WA4 6SG

SELL IN-STORE & ONLINE

01925 387 107
CHESHIREGOLDXCHANGE.CO.UK

Need IT Support at Home?

- Skilled and Friendly Technicians
- PC and Laptop Support
- Home Visit or Remote Dial-in
- Antivirus/Malware Check
- Unlimited Support Time
- Equipment Supplied: Laptops, PCs, Printers & Bespoke Builds

Call our Team: 01925 251143
sales@aspire-computers.com | www.aspire-computers.com



YEAR 11 OPEN EVENINGS



Warrington campus, 5.00pm - 8.00pm:

**Wednesday
6th November**

**Wednesday
20th November**

Open evenings are the best way to explore everything our college has to offer!

Chat with current students, meet industry expert tutors, and tour state-of-the-art facilities transformed by over **£13 million** in recent investment!

Register now:

wvr.ac.uk/openevenings



Ukrainian artist influenced by Banksy holds first exhibition in Lymm

by Helen Bennicke

A UKRAINIAN artist who has been influenced by graffiti artist Banksy has held his first solo exhibition at a gallery in Lymm.

Yaroslav Yasenev has an exhibition at Collect Art in the heart of the village.

His work has elements of Banksy and he uses spray paint and acrylic on his canvases to create brightly coloured stunning pieces. Many of the works had sold stickers on them.

He also has similarities to David Hockney with his painting style.

Roy Lichtenstein, Andy Warhol and Vincent Van Gogh also

influence his painting style.

He said that he really likes artists "who do art as one of a kind."

There are West Coast scenes and paintings with South Asian influences. The war in Ukraine has also had an impact on his work.

The exhibition opened in October and it is the first time the artist, who teaches classes in Warrington, has exhibited alone.

He studied at the National Academy of Fine Arts and Architecture in Kyiv, Ukraine, between 2012 and 2018.

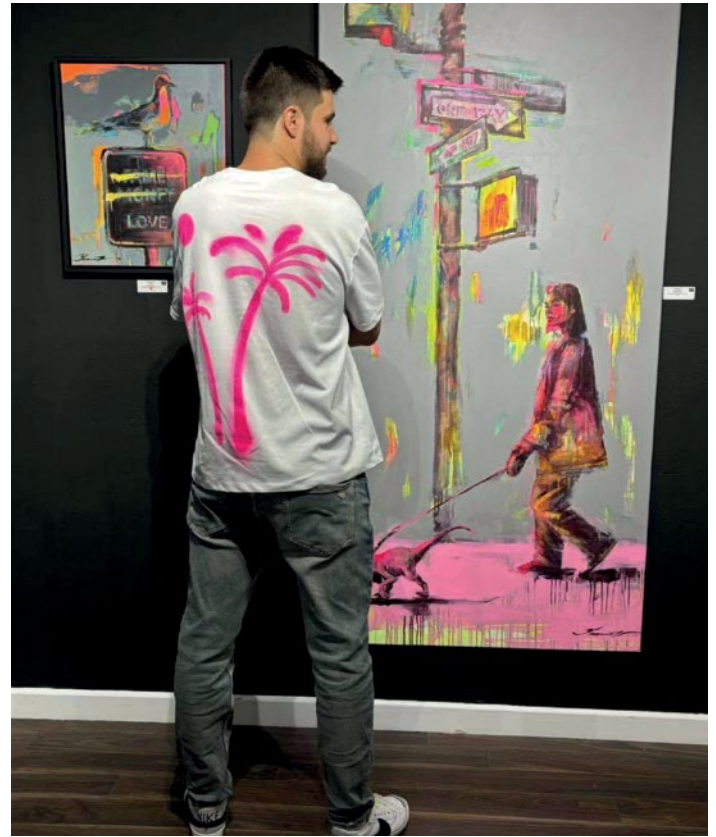
The exhibition contains 30 pieces of work, some of which are influenced by the war in Ukraine and others influenced by the sights of the West Coast of the United States or South East Asia or Europe.

One of his works, entitled Sharks Party, and costing £850 features a figure looking down at a pool where shark fins are circling.

The pool is red as if to signify blood and conflict.

Explaining what motivates him, the artist said he likes painting on large canvases.

His dream "is to have my own gallery that is huge, like an airport hangar to showcase all of my work and have a studio inside."



Celebrating Strictly St. Rocco's 10th Anniversary

Scan here to
find out more



1st December 2024

Haydock Park Racecourse

Celebrate 10 years of Strictly St. Rocco's with us!

Supported by



CADMAN'S
DANCE CENTRE

Est. 1903



Georgina back home after representing Great Britain in Sydney Marathon



LYMM resident Georgina Walker – known to many as a member of Lymm Runners – is back home after representing Great Britain in the World Age Group Championships at the TCS Sydney Marathon.

Georgina, also known for her work promoting running at Cherry Tree Primary School, was thrilled to be invited to go "Down Under" to take part in the race.

She said: "I was selected on the basis of my performance in the 2023 Yorkshire Marathon by the Abbott WMM Wanda Age group Rankings and was absolutely thrilled when I received the invitation."

"The experience was wonderful – not just running the actual race itself but also the training session, huge group photo on the steps outside the iconic Sydney Opera House and the sunset cruise we were all invited on."

"As for the actual race – it started with everyone running over the Sydney Harbour Bridge, was twisty turn, lumpy bumpy in the middle, and ended at the steps of the Opera House."

"There was so much to take in en route and the volunteers were incredible. It was an absolutely

unforgettable experience and a real privilege to be part of it all"

Georgina is now back in Lymm and hoping for more International Marathon adventures soon.

Lymm Runners meet four times a week. There are runs of various distances, including a Power Walking Group, on Thursdays at 7pm, leaving from Lymm Leisure Centre, Sundays at 08.30am from outside Lymm Library and Wednesdays at 9.15am for a coffee run also from the library.

On Tuesdays there is a choice of meeting at the Leisure Centre at 7.00pm for the 4 mile Social Whistle Run or 6.45pm at the Track at Victoria Park, Warrington in the winter and Lymm High School playing fields in summer for the Track Training Session

The club was formed in 2010 and now has more than 450 members.

More details are available at www.lymmrunners.org.uk



Chambers Fletcher Solicitors Divorce Column

By Peter Wilkinson
Divorce Lawyer at Chambers Fletcher Solicitors

Domestic Abuse

Domestic abuse is a serious issue that is addressed through various legal frameworks and support systems. It can take many forms including physical, emotional, psychological, sexual, and financial abuse. In this country we have a robust legal framework to tackle domestic abuse, to protect victims and to hold perpetrators accountable.

Victims of domestic abuse can seek protection through various legal orders. Two such orders are non-molestation and occupation orders which are commonly used in marriage, civil partnership or cohabitation breakdown where abuse is perpetrated by one party against the other.

A **non-molestation order** is a type of injunction typically aimed at prohibiting the abuser from using or threatening violence, or from intimidating, harassing, pestering or even communicating with the victim, including a child.

An **occupation order** is a type of injunction which regulates who can, or cannot, live in the home or certain parts of it. It can therefore be used to enforce, declare, suspend or restrict rights to occupy the home. Such orders do not change the ownership of the property but concern only the rights to occupy the home to ensure safety and well-being. Occupation orders can also exclude a person from an area around the home (eg, from within 100 metres).

The process for obtaining non-molestation and occupation orders involves submitting an application to the court together with a witness statement detailing the incidents of abuse and including any evidence in support such as abusive text messages, emails, photographs of any injuries or damage to property. The court will consider several factors in determining whether to make an order but in particular the need to ensure the health, safety and well-being of the applicant / any relevant child, and whether the applicant / relevant child is likely to suffer significant harm should the order not be made.

Breach of non-molestation and occupation orders is a serious matter, enforced by committal proceedings, and for which the abuser can be sent to prison.

For advice and assistance regarding divorce and related matters please get in touch - we have a lot of experience advising, guiding and supporting clients in this area of law.

Family Law & Divorce Residential Property Commercial Property Wills, Trusts & Probate



Peter Wilkinson



Stephen Worrall

01925 359005
www.chambersfletcher.co.uk

Cambridge House, Suite 4, 16 Walton Road,
Stockton Heath, Warrington, WA4 6NL

Cricketers win promotion to division one

LYMM Oughttrington Park won promotion to division one of the Cheshire Cricket League after one of their most successful seasons of recent years.

They were promoted as runners-up in division two – but in the final match of the season, in a nail-biting finish, defeated the division two winners, Westminster Park, who were also promoted.

A club spokesperson said: "This was testament to the club captain Shovan Chatterjee, the hard working and passionate club committee and the talented junior players bolstering all the senior teams"

Lymm 2nd XI came a respectable fifth in division B west.

The achievement followed a turbulent couple of years following the 2022 season when the club went down to division two and lost almost the entire first XI.

Faced with this situation and the expectation that turning out 22 players on a Saturday afternoon would be extremely difficult, emergency meetings were held and the club considered fielding

only one Saturday team for the 2023 season. However a decision was taken that at all costs a 1st and 2nd XI must be retained, even if this meant fielding weaker teams.

One bright spot was the burgeoning junior section which had been revitalised by club chair Steve Gladwin and some senior members some years previously. The club took a decision to prioritise junior development and to fast track youngsters into the senior teams. With the help of Antonell 'Yushi' Atwell player and coach for the last two seasons, this proved a major success. Against all expectations

Lymm stayed in division two last year with a mid-table finish and has now achieved promotion back into division one.

Lymm boasts one of the most attractive cricket grounds in Cheshire and the club caters for all standards of player, with five senior teams, a women's team and numerous opportunities for juniors of all ages to learn and play.

In the summer, the club now holds Junior training with BBQ and bar on a Friday evening and has first rate practice facilities and a full social programme. New members will be made very welcome.



PRIESTLEY
COLLEGE
WARRINGTON



Open Events

for ENROLMENT SEPT 2025

Sat 9 Nov
Wed 20 Nov



For times - and to book your place - scan the QR code



CLASSIFIED

Call 01925 631592 to advertise

ACCOUNTANCY & BOOKKEEPING

BOOKKEEPER/ACCOUNTANT. Licensed for maintaining financial records, VAT Returns, Payroll Service, Management Accounts, SAGE Software Consultancy. **Contact: 07815 617914.** (G*)

CARPET CLEANING

A1 STAINBUSTERS. A Warrington company cleaning carpets, hard floors, Upholstery (Leather + fabric) and curtains in situ. FREE quotes for domestic and commercial. Approved carpet cleaners for Hancock and Woods for over 10 years. **Call John on 07765 314080** (J8/23)

SIMPLY THE BEST CARPET CLEAN YOU will ever have. Cleaners UK Ltd. Est over 35yrs. Have your carpets & sofas beautifully deep cleaned leaving them fresh smelling & colour restored. Latest & best methods. Dry/steam. Leather cleaning, oriental rug specialist. Professional, reliable & affordable. **For more info call Neil Riley on 01925 264989 / 07831 336060 www.cleaners-uk.net** (J4/24)

CAR SALES

PARKVIEW CAR SALES

We buy and sell QUALITY CARS
Best price paid
Telephone Peter on 01925 575737 / 07957 545479
23 Padgate Lane
Padgate, Warrington
Cheshire, WA1 3RS (G*)

CLEANING SERVICES

arleys angels

- Spring Clean Specialists
- Presenting your home for sale
- Moving house
- After building work cleans

01925 266834
... because you're worth it! (G*)

SIMPLY THE BEST CARPET CLEAN YOU will ever have. Cleaners UK Ltd. Est over 35yrs. Have your carpets & sofas beautifully deep cleaned leaving them fresh smelling & colour restored. Latest & best methods. Dry/steam. Leather cleaning, oriental rugs specialist. Professional, reliable & affordable. **For more info call Neil Riley on 01925 264989 / 07831 336060 www.cleaners-uk.net** (J4/24)

COUNSELLING

SAFE SPACE COUNSELLING. Counsellor/psychotherapist based in Lymm. Specialises in stress, anxiety, low self-esteem, trauma and relationship issues for adult clients. Daytime and evening slots available, offering both online and face-to-face sessions. **Contact Amy on 07852 686862 or visit www.safe-space-counselling.com** (J85/24)

EDUCATION

READING DIFFICULTY? I teach all ages on a 1 to 1 basis for free in your own home. **Contact Peta on 01925 758796.** (J88/24)

GARDENING SERVICES

• All aspects of tree surgery
• Stump grinding
• Waste removal
• Locally based
• Free quotation

Beechwood Industries
www.beechwoodindustries.co.uk
01925 860544 (G*)

PHOTOGRAPHY

FAMILY & PET PORTRAIT PHOTOGRAPHY
Lymm based Andrew Collier Photography specialises in family and pet portrait photography using Lymm locations as a backdrop. Personal service with beautifully made frames and albums. **Call Andrew on 01925 471091 or visit www.andrewcollierphotography.co.uk** (G4/22)

RE-UPHOLSTERY

Orchard Soft Furnishings

RE-UPHOLSTERY
CURTAINS • BLINDS
FREE MEASURING & FITTING
TEL: (01925) 756388
www.orchardsoftfurnishings.co.uk (G*)

PAYROLL

WHY TRY TO BE A PAYE EXPERT?
Watkinson Black can provide a cost effective payroll service, releasing you to concentrate on your business. **For further details please phone: 01925 413210 or e-mail: info@warringtonaccountants.co.uk** (G*)

TAXI / PRIVATE HIRE

Horn's
Airport Transfer & Taxi Specialists
CALL MARTYN: 01925 751761
MOBILE: 07881 786250 (G3/25)

TYRES

EVERGREEN Centre of Excellence
Express Mobile Tyres
Local Family Business. Est 1997
01925 810000
www.expresstyres.co.uk
Order Online Today!
Branded & Budget Tyres
Cars, Vans, 4x4's, Caravans
Light Commercial
& Performance Vehicles
The tyre service that comes to you at home or your place of work
No Call Out Charge!
BRIDGESTONE MICHELIN
GOODYEAR Continental (G*)

Obituary

Mary Elizabeth Lowe nee Griffiths

The funeral has taken place of Mary Lowe of Daisybank Road, Lymm.

Mary passed away in hospital on September 19, aged 87. She was born and lived in Lymm all of her life.

Mary is survived by sons Stephen and Anthony and daughter Joanne.

The funeral took place at Altrincham Crematorium, followed

by a celebration of her life at Grappenhall and Thelwall Royal British Legion.

Arrangements were by John Burrows and Sons of Lymm.



Obituary Notices

While Obituary notices are published free of charge, due to pressures on space, we can never guarantee they will be used and there can also be a delay of several months.

If you would like to guarantee a notice to appear in the next available issue, these can be purchased for £75 plus VAT which helps towards the running costs of your free community magazine.

To place an obituary notice or any other public/family notice please email
info@lymm.life.co.uk

Established 1878
John Burrows & Sons
Fourth Generation Independent Family
Funeral Directors
Friendly & Professional Service
Day or Night ~ J. Tandy
The Old Smithy, Mill Lane, Lymm,
WA13 9SE **Tel: (01925) 752501**
Golden Charter
Funeral Plans
www.johnburrowsandsons.co.uk

twentyfour seven
design & print ltd

PRINT PROBLEMS SOLVED!
FLYERS • POSTERS
BANNERS • STICKERS
MAGAZINES
OFFICE STATIONERY
CUSTOM PRINTS • FOLDERS
CARDS • SIGNAGE

THE NEW MEDIA CENTRE, OLD ROAD, WARRINGTON, WA4 1AT
01925 240247 • INFO@247PRINT.NET • WWW.247PRINT.NET

The North West's leading supplier of concrete

www.barrowmixconcrete.com

BARROW - MIX

1984-2024
40TH YEAR
ANNIVERSARY



FREE SITE SURVEY

6 DAY SERVICE

All areas covered

Free barrowing service

Only pay for what you lay

From half a cubic metre upwards

Levelling/laying service if required

(minimum charge)

We can supply

C25, C30, C35 Fibre Reinforced



VISA

MasterCard

Maestro

SOLO

Call NOW for a FREE quotation
01565 734111 or 01942 722629