

# Lymm Life Magazine

ISSUE 292 | NOVEMBER 2023  
DELIVERED FREE TO 5000 HOMES



urban

BUILDING PROJECTS LTD

Extension &  
Building Renovation  
Specialists

Tel: 01925 730888

www.urbanbuildingprojects.co.uk



LYMM  
PARISH  
COUNCIL

Approved by Lymm Parish  
Council as the official  
magazine for Lymm

Lymm Eye Clinic

Local, professional eyecare  
when you need it

No referral necessary,  
book your appointment online

[www.lymmeyeclinik.co.uk](http://www.lymmeyeclinik.co.uk)

Tel: 07498 456312  
1 Birchbrook Road, Lymm

## Celebrating 15 years of childcare!

Page 9

24-7-EV

Local installer of  
Electric Vehicle Charge Points  
for your Home & Office  
0330 133 4186

Regular news updates at [www.warrington-worldwide.co.uk](http://www.warrington-worldwide.co.uk)



# Editor's Comment



**Editor**  
Gary Skentelbery

**Production**  
James Bryan

**Advertising**  
James Balme  
Telephone  
01925 631592

**Editorial**  
01925 623633

**Email**  
info@lymmlife.co.uk

**Websites**  
www.lymmlife.co.uk  
www.culchethlife.com  
www.frodshamlife.co.uk  
www.warrington-  
worldwide.co.uk  
www.warrington.tv

**Address**  
New Media Centre  
Old Road Warrington  
WA4 1AT

*Lymm Life is published  
monthly by Orbit News Ltd.*

*The contents of this magazine  
are fully protected by copyright  
and nothing may be reprinted  
or reproduced without prior  
permission of the publishers.*

*The publishers are not liable for  
any statement made or opinion  
expressed by third parties in this  
publication.*

*Printed by TwentyFourSeven*

## CONGRATULATIONS to the team at Kids Planet on celebrating their 15th anniversary.

As they say ... from small acorns! If ever a business epitomised the expression, Kids Planet certainly does.

From one nursery in Lymm back in 2008 to over 160 across the UK in just 15 years is a remarkable achievement for Clare Roberts OBE and her team and full deserving of receiving an OBE from King Charles for services to childcare last year.

With the company's HQ and a nursery still based in the village, Clare has also remained true to her roots.

As well as developing a successful company brand, Kids Planet has also been supportive of the local community, raising money for various good causes over the years.

Here at Lymm Life, as we march

towards our 25th anniversary celebrations next April, we would like to wish Clare and her team every future success and also a big thank you for the support to Lymm Life on numerous occasions during the past 15 years.

We love reporting on local success stories and the achievements of Clare and her team and the Kids Planet brand has most certainly been an amazing success story – long may it continue.

Meanwhile if you have a success story or a good news story please let us know so we can share it with the local community.

With this being our November issue – I can't believe Christmas is fast approaching! Another year gone in the blink of an eye!



## N & J STANHOPE Coal and Log Supplies

Best Quality Coal

Smokeless Fuel

Logs Supplied in Bags and Bulk

**Open 6 Days. Closed Sunday**

**Broomeedge Farm  
Burford Lane, Lymm WA13 0SE**

**Tel: 752830  
Mobile: 07979 785 421**

## Ideal for Christmas!

Gift Vouchers available for...

Reflexology - Acupuncture - Hypnotherapy  
Massage - Osteopathy - Aromatherapy  
Chiropody - Herbal Medicine - Bowen Technique  
EFT - Manual Lymphatic Drainage  
Endermologie - Indian Head Massage

Call 01925 730123 or book online:  
[www.cheshirenaturalhealth.co.uk](http://www.cheshirenaturalhealth.co.uk)



# Chambers Fletcher Solicitors

Residential Property  
Commercial Property

Family Law & Divorce  
Wills, Trusts & Probate



Peter Wilkinson

**01925  
359005**

[www.chambersfletcher.co.uk](http://www.chambersfletcher.co.uk)



Stephen Worrall

Cambridge House, Suite 4, 16 Walton Road, Stockton Heath, Warrington, WA4 6NL



# Parish council seeks volunteers to help add sparkle to Lymm village

**LYMM Parish Council is seeking volunteers to help add some sparkle to the village this winter.**

The Parish Council is looking for volunteers to be part of their Events Working Group.

This is made up of residents, councillors and officers and has been tasked with researching options for decorating Lymm village centre for winter, for holding Carols on Christmas Eve and making suggestions to the Events Committee for ideas for events in 2024.

If you have some spare time to give, feel you have valuable skills, ideas and recommendations for future local Parish Council run events, get in touch.

Plans are poised to start for the Christmas Trees and lights, Carols from The Cross as well as initial discussions for the 80th anniversary of D-Day in June 2024.

In addition to this, a group of residents and Councillors are looking at options for improving the Sunken Gardens. If you'd like to be involved, please do get in touch.

Lymm Parish Council would love to hear from you.

Please email: [adminassistant@lymmparishcouncil.gov.uk](mailto:adminassistant@lymmparishcouncil.gov.uk) or call 07775 320 568.



## Professional tree services

**Free Quote**


- Domestic
- Commercial
- Site Clearance
- Vegetation management
- Stump grinding
- Re-planting
- £10m public liability insurance

**Beechwood Industries**  
www.beechwoodindustries.co.uk

For more information, please call us on **01925 860544**


CP CS   Citb   CSES   Constructionline   City & Guilds NPTC Qualified   CHAS

# Christmas at Primrose!




**Wreath Workshops**


Join us on one of our wreath making workshops



**Christmas Gifts from 4th November**




**Complimentary Mulled Wine and Mince Pies every weekend from 18th November**




**Premium Christmas Trees**

Pick your Christmas Tree from 18th November



**Breakfast with Santa at the Walled Garden Café Sunday 10th December**

For more information or to book onto any of our events please call us on 01925 752 635 or email on [sales@primrosehillnurseries.com](mailto:sales@primrosehillnurseries.com)



**PRIMROSE HILL NURSERIES**  
Est. 1935

Warrington Road, High Legh, Knutsford, Cheshire WA16 0SQ. 01925 752635



# What's On

in conjunction with **LYMM PARISH COUNCIL**



**LYMM PARISH COUNCIL**  
 Next meeting Tuesday November 14th, 7:30pm  
 Lymm Parish Hall  
 Check [www.lymmparishcouncil.gov.uk](http://www.lymmparishcouncil.gov.uk) for details.

**LYMM THURSDAY EVENING BRIDGE CLUB**  
 Lymm Village Hall every Thursday 7pm  
 Details: 07708 172015

**MAPLE LODGE ART GROUP**  
 Meet each Wednesday 9.30am - 11.30pm  
 Oughtrington Community Centre, Lymm  
 Details: 01925 755926

**ROTARY CLUB OF LYMM**  
 Meets at Warburtons Parish Rooms on the 2nd and 4th Wednesday each month at 8pm  
 Contact 01925 919053

**LOVING HEARTS & HANDS**  
 Knitting for charity at Lymm Methodist Church, 2nd and 4th Thursday each month, 1.30pm - 3pm. Details: 01925 753298

**LUNCH AT THE BROW**  
 Eagle Brow Methodist Church  
 2nd Friday in the month  
 Light lunches 12 noon till 1.30pm.  
 All proceeds to The Y Project Room at The Inn

**GARDENING CLUB**  
 Meet Third Wednesday of the month  
 Lymm Baptist Church, Higher Lane. 7.30pm  
 Visitors welcome. £2 includes tea and cake

**LYMM FLORAL ART GROUP**  
 Lymm Village Hall  
 Third Monday of the month (except August and December) at 7.30pm. Visitors most welcome. Contact: 07876 176501  
[lymmfloralart.org.uk](http://lymmfloralart.org.uk)

**LYMM PHOTOGRAPHIC SOCIETY**  
 Every 2nd and 4th Wednesday (ex Aug), 7.30pm  
 Spread Eagle pub, Eagle Brow.  
 See our rolling display in Lymm Library  
 Details: [www.lymmphotosoc.org.uk](http://www.lymmphotosoc.org.uk)

**LYMM WINE AND BEER CIRCLE**  
 3rd Wednesday of the month, 8pm  
 The Spread Eagle Hotel  
 Details: 01925 756444

**LYMM CONCERT BAND**  
 Rehearsals every Thursday evening  
 United Reformed Church, 8pm.  
 Details: 01925 752934

**LYMM WI**  
 Every second Wednesday, 2-4pm at Lymm Youth and Community Centre. Visitors welcome.

**LYMM AND DISTRICT MIXED VOICE CHOIR**  
 Every Wednesday 7.30 Lymm Methodist Church. Contact 01925 601664.  
[caih@cstones.co.uk](mailto:caih@cstones.co.uk)

**PROBUS CLUB OF LYMM**  
 A small, friendly social club for retired people. Meets on second and fourth Tuesdays at 2:15pm.  
 Details: [www.LymmProbus.club](http://www.LymmProbus.club)

**LYMM DINGLE PROBUS CLUB**  
 A friendly busy social club for retired men. Meets on alternate Thursday afternoons at Lymm Baptist Church.  
 Details: [www.lymmdingleprobus.club](http://www.lymmdingleprobus.club)  
 Club secretary 01925 759995

**FRIENDS OF LYMM LIBRARY CRAFT GROUP**  
 Lymm Sanctuary Hub  
 Fridays 1.30-3.00pm  
 Details: 01925 754016

**HEATLEY WI**  
 Meets the second Thursday of each month at Oughtrington Junior School, 7pm  
 Visitors welcome. Details: 01925 752014

**LYMM & THELWALL U3A**  
 Speaker meeting 3rd Thursday of the month (excluding August & December) at Thelwall Parish Hall 10.00am. Prospective members welcome.  
[www.u3asites.org.uk/lymm-thelwall/home](http://www.u3asites.org.uk/lymm-thelwall/home)  
 Contact: [enquiries@lymmthelwallu3a.org.uk](mailto:enquiries@lymmthelwallu3a.org.uk)

**LYMM PARISH COUNCIL**

Tuesday November 14th, 7:30pm  
 See parish council website for details.

# Entries open for 15th Robert Moffat Memorial High Legh 10K



**THE 15th High Legh Robert Moffat Memorial 10k will be held on Sunday March 17th 2023 at the original start time of 11am, and local residents and runners alike are already looking forward to the event.**

The race involves the whole community as it's organised by the High Legh Community Association with Lymm Runners. Delicious sandwiches and cakes are provided by the PTA, plus there are wonderful prizes and support from generous local sponsors.

Cheshire Mix 56 Radio will be broadcasting again, LIVE from the event.

So if this sounds like your sort of thing, you'll be pleased to know that there are still a few places left.

All you have to do is go to the website and click the link [www.highlegh10k.org.uk](http://www.highlegh10k.org.uk)

Those who have entered the race before will know what a fun and friendly race it is, as it caters for all abilities. It's even been noticed by the National press, including the Guardian who described it as 'one of the best races in the UK' and Runners' World who praised it as 'well organised, competitive and welcoming.'

Runners can enjoy a very scenic flat course along the local lanes after going through the village where they are cheered on by High Legh residents.

The race is also supported by many local volunteers and Marshals, who make such a difference with their friendliness and commitment to making sure that the runners are safe.

Furthermore, this year, there's an extra chance for 15 minutes of fame for entrants as the fabulous

**A Great Race!**

"...thanks to excellent organisation, a quick route, a competitive field and a warm welcome."

Runners World, March 2023

**HIGH LEGH 10K**

Register now at [www.highlegh10k.org.uk/](http://www.highlegh10k.org.uk/)

**17th March 2024 11am**

A friendly and very welcoming 10k race with a strong community feel.

Organised jointly by High Legh Community Association and Lymm Runners.

Visit our website to enter! [www.highlegh10k.org.uk/](http://www.highlegh10k.org.uk/)

**G P BROADSMITH & SON**

**POOL FARM, LYMM**

Bottled on the Farm from our Free Range Cows

**DELICIOUS MILK FROM OUR HAPPY COWS DELIVERED TO YOUR DOOR!**

Here at Pool Farm we take good care of our free-range dairy cows. They produce fresh, quality milk which is bottled in our own farm dairy and delivered to local doorsteps. We also stock a range of associated products such as eggs and potatoes, all sourced from local farms.

Call 757655 or email [milk@broadsmith.com](mailto:milk@broadsmith.com) to discuss early morning deliveries to your doorstep and follow us on Facebook or Instagram at @broadsmiths where you can keep up to date with life on the farm!

**G P BROADSMITH & SON**  
 POOL FARM, POOL LANE,  
 STATHAM, LYMM, WA13 9BW  
 TEL: 01925 757655  
 YOUR LOCAL DAIRY Est. 1932

**ANDY CARTER MP**

Member of Parliament for Warrington South

**I hold regular constituency advice surgeries at my Warrington South office and around the area.**

To make an appointment call **01925 231 267** or email [Andy.Carter.MP@parliament.uk](mailto:Andy.Carter.MP@parliament.uk)

Promoted by Stephen Taylor on behalf of Andy Carter MP of 1 Stafford Road, Warrington WA4 6RP. Funded through the allowances available to the Member of Parliament.

Call us on: **01942 607250**

[www.elbfireplaces.co.uk](http://www.elbfireplaces.co.uk)

70 Twist Lane, Leigh, Lancashire WN7 4DP

**Fire Surrounds, Stoves, Gas & Electric Fires**

**Established 40 YEARS**

No need to change your carpet - measure fireplaces

Over 75 displays over 2 floors

Live wood burning stove on display

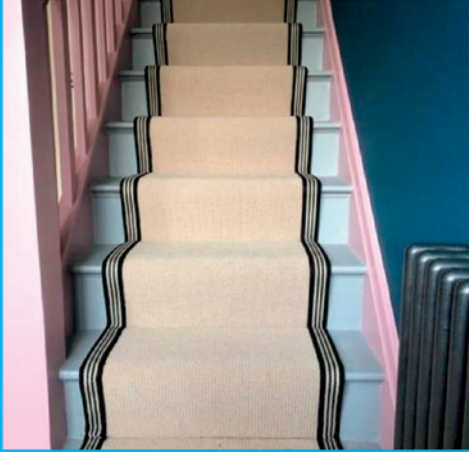
Is your conservatory too cold to use in Winter?  
**Why not install a stove?**



# wilde & sons

CONTRACT AND DOMESTIC FLOORING  
A FAMILY RUN BUSINESS WITH OVER 25 YEARS EXPERIENCE

---



---

THIS YEAR WE CELEBRATE 10 YEARS  
OF PROVIDING FLOORING SOLUTIONS TO OUR CUSTOMERS

THANK YOU FOR YOUR CONTINUED SUPPORT

---

WE WORK WITH HIGH QUALITY BRANDS INCLUDING

KARNDEAN DESIGN FLOORING

LITTLE GREENE, WESTEX, VICTORIA CARPETS  
LOUIS DE POORTERE & MORE

---

VISIT US AT

6 EASTWAY, SALE M33 4DX T: 0161 973 7868  
4 FRAMINGHAM ROAD, BROOKLANDS M33 3SH T: 0161 962 7255

E: [enquiries@wildeandsons.com](mailto:enquiries@wildeandsons.com)

W: [www.wildeandsons.com](http://www.wildeandsons.com)

Social Media: [@wildeandsonsflooring](https://www.instagram.com/wildeandsonsflooring)



SCAN THE QR CODE TO BOOK YOUR FREE, NO OBLIGATION MEASURE



# Keate House care home takes a nostalgic trip back to the 1950s

**RESIDENTS and staff at Keate House Care Home in Lymm took a delightful trip down memory lane as they transformed their home into a time capsule of the 1950s.**

The day was filled with retro delights, from milkshakes and Elvis to classic cars and jukebox tunes. It began with milk shakes and the excitement continued to build as a surprise guest made his grand entrance – none other than Elvis Presley himself, or at least, an impersonator who had everyone in awe with his rock 'n' roll moves.

The residents couldn't resist dancing around the jukebox, just like they used to in their youth. Lunchtime brought another treat as the dining area was transformed into a 1950s-style diner, complete with red-and-white checkered tablecloths. Residents enjoyed classic American fare, indulging in juicy burgers and hot dogs, accompanied by crispy fries.

As if the day couldn't get any better, the American Auto Club North West arrived with stunning vintage cars from the 1950s. The gleaming chrome and sleek lines of these classic cars transported the residents back in time, sparking memories of their own experiences.

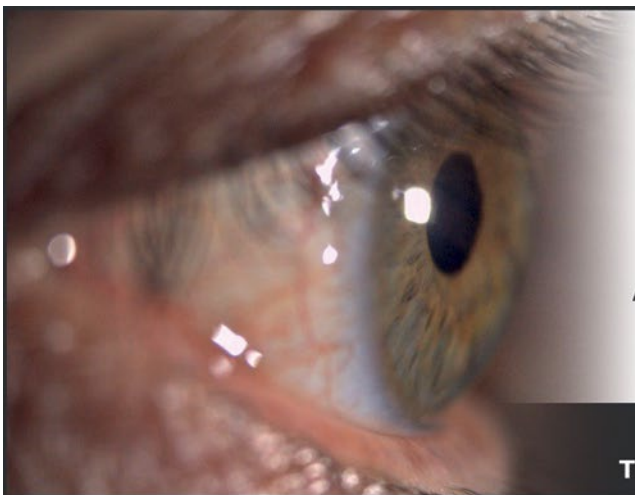
The day concluded with an evening dance around the jukebox, with residents sipping on Cola Floats and munching on popcorn.

The laughter and joy that filled the air was a testament to the success of this nostalgic journey, as residents and staff alike cherished the opportunity to relive some of their fondest memories.

Care Home Manager Diane Clarkson said "It's been so heartwarming to see the smiles on our residents' faces today. The 1950s was a time of great nostalgia for many of them, and we wanted to create an immersive experience that would transport them back to those cherished memories."

She added, "The presence of Elvis and the classic cars was a real highlight. Our residents will be talking about this day for weeks, and I'm thrilled that we could make it happen."

Keate House Care Home in Lymm continues to find creative ways to enrich the lives of its residents, providing them with opportunities to relive the past and make new memories. This 1950s-themed day will undoubtedly be a cherished memory for years to come, a testament to the dedication of the staff to create meaningful experiences for those in their care.



## Lymm Eye Clinic

*Local, professional eyecare when you need it*

A comfortable, friendly environment where all aspects of ophthalmology can be diagnosed and advised upon with the most up-to-date imaging equipment available.

No referral necessary, book your appointment online

[www.lymmeyeclinic.co.uk](http://www.lymmeyeclinic.co.uk)

Tel: 07498 456312 | 1 Birchbrook Road, Lymm, WA13 9RR



# Large detached house on Green Belt site may be demolished

**A LARGE, detached house standing in its own grounds on a Green Belt site at Lymm will be demolished and replaced by a new property "designed with 21st century living in mind" - if Warrington planners give the go-ahead.**

The house is in The Avenue - a tree-lined cul-de-sac near Lymm Dam and local beauty spot The Bongs. Planning consent already exists for two outbuildings within the grounds, one for a swimming pool and gymnasium and the other for a garage and office.

But a report submitted to the borough council's planning department says the proposed new dwelling would be aesthetically far more sympathetic to the street scene and would have far less impact on the openness of the Green Belt.

The piecemeal additions already approved would result in a house far less appealing which would detract from neighbouring properties. The improved design of the house now proposed would be more respectful to a countryside setting, resulting in one area of the overall site rather than a group of spread-out buildings across the whole site.

It would be far more economical to build a new house from the ground up inclusive of new sustainable build materials and technologies than to retro-fit the current house which was internally very dated and not practical for modern day family living.

The new property would use the

existing access and there would be parking within the grounds.

There would be a 35 per cent

reduction in the footprint of the new building when compared with the old, including the approved outbuildings and extensions.

Planning officers are now considering the proposals.



## ACCOUNTANTS IN CULCHETH WARRINGTON

Are you looking for progressive accountancy, business and tax advice?

Speak to one of our experts:  
01925 761 600

or visit us at:  
stylesandco.co.uk

FORWARD THINKERS. TRUSTED ADVISORS.



  
**E SMITH AND SON**  
**PLANT CENTRE**  
**WWW.LYMMPLANTS.CO.UK**  
 Where Gardeners Go!  
**THE NURSERY, BOOTHS LANE, LYMM, WA13 0PF**  
**01925 752459**  
**Seasonal Plants, Annuals, Perennials,**  
**Shrubs and Fruit Trees**  
**Ready Planted Hanging Baskets and Containers**  
**Christmas Wreath Workshops**  
**Starting November 22nd**

**OPEN ALL YEAR FOR YEAR ROUND COLOUR**  
**MONDAY TO SATURDAY 10AM - 4PM SUNDAY 11AM - 3PM**



# Kids Planet Lymm

DISCOVER SO MUCH MORE

Did you know - Kids Planet nurseries participate in government-funded and tax-free childcare places, and all nappies, wipes and formula are included in the fees, meaning all parents need to bring to the nursery is their child!



Book in for our Open Day on 11th November!



Eagle Brow, Lymm WA13 0NA, UK  
www.kidsplanetdaynurseries.co.uk



SCAN ME



**PRIESTLEY**  
COLLEGE  
WARRINGTON

# Open Events

for ENROLMENT SEPT 2024

**Sat 4 Nov**

**Wed 15 Nov**



Book your place



**priestley.ac.uk**





# Kids Planet celebrates 15 years of childcare!

**FIRST** launched in Lymm, the team at Kids Planet Day Nurseries were thrilled to celebrate reaching the company's 15th-anniversary milestone recently, at the Jolly Thresher Tipi in Lymm.

Since CEO Clare Roberts set up the company alongside her father in 2008, Kids Planet has grown to over 160 nurseries, responsible for the care of over 20,000 children across the UK. Kids Planet still maintains its original family ethos and children remain the priority.

Clare said: "When I set up the company, it was all about finding high-quality childcare and supporting the families of the team that worked for us, and apart from our growth, not a lot else has

changed! For me personally, I've got more children and my children are older. My oldest daughter was nine months old on the day Kids Planet was founded, and she is now 16 – so that's a little scary! It has been fantastic to see how people have progressed within the company over the years. Fifteen years is a fantastic achievement and I just want to thank all the hard-working team members within Kids Planet, as without them none of this would be possible."



 **LYMM**  
HIGH SCHOOL

LYMM HIGH SCHOOL  
**OPEN  
EVENING**

 **Thursday 5th October 2023**  
5.00pm to 8.00pm

**SIXTH FORM  
OPEN EVENING**

 **Thursday 16th November 2023**  
5.00pm to 8.00pm

[www.lymmhigh.org.uk/sixth-form](http://www.lymmhigh.org.uk/sixth-form)

OUGHTRINGTON LANE, LYMM, CHESHIRE, WA13 0RB

**01925 755458**





# Bus service set to return after gap of nearly a year!

**A BUS service at Statham in Lymm is set to return following a gap of nearly a year, following a campaign by local Cllrs. and a petition signed by more than 600 people.**

The old service along Barsbank Lane and Star Lane in Statham was withdrawn last October but has now been replaced by an extension to the No 47 service.

Local Councillor Ian Marks who has led the campaign to get the buses back said: "Last year we welcomed the change to the service to Altrincham but residents were up in arms about the loss through Statham. It severely impacted elderly and disabled passengers who were forced to walk under Barsbank Aqueduct, which can be dangerous, and then up a steep hill to bus stops on the top road. With great support from the Morrisons shop on Albany Road, we launched a petition which gathered more than 600 signatures. In March we organised consultation sessions with Council officers to put the case for a return of a service.

"We are grateful that a solution has now been found. It has taken a long time because there were many hurdles to climb over. If a service does not make a profit, it has to be subsidised by the Council. We are fortunate that some of the government's Bus Service Improvement Grant has been used for this but the law states that care has to be taken that a subsidised

service does not compete with a commercial one. Access to the rest of the network can be achieved by changing at appropriate stops."

The new 47 service will have low floor easy access buses with space for a limited number of wheelchairs, buggies and pushchairs. The route starts at the Interchange in Warrington and then runs to Bank Quay Station, Walton Road in Stockton Heath, Grappenhall Road, Chester Road, Weaste Lane in Thelwall and up Massey Brook Lane to Lymm. It turns right onto Booths Hill Road, then down

Barsbank Lane into Star Lane, left onto Warrington Road, left onto Camsley Lane and then back down Massey Brook Lane. One reason for this 'anticlockwise' route is that the shelter near Turnberry Close can be used. Going 'clockwise' would mean the shelter was redundant.

The service runs from Monday to Saturday starting in Warrington at 8.15 am with the last service leaving town at 5.00 pm. From 9.30 am to 2.30 pm it is hourly with slight variations before and after. As well as benefitting Lymm residents, it will also help residents elsewhere in the south of the town.

Cllr. Marks concluded: "My thanks to Council officers for all

their work to get the service up and running and to Omega Busways for operating it. I really hope it is well used to justify the investment."



## Go-ahead for imaginative proposals for historic church

PLANNING chiefs have given the go-ahead for imaginative proposals for historic Lymm Methodist Church.

They involve the construction of a modern, glazed structure linking the original church in Eagle Brow, Lymm with the adjoining Sunday School building.

The scheme has won the support of Lymm Parish Council and of nearby residents as well as the wider, local Methodist community.

Lymm Methodist Church dates from 1850 while the Sunday School was built in 1865.

The new extension will respect the heritage of both buildings and will replace a number of alterations and extensions added over the years which have resulted in a number of difficult-to-access spaces over five levels.

Lymm Methodist Church also hosts the Life Church and is used by around 400 people every week, as well as by groups of around 180 pupils from local schools.

The proposals will also enable the development of the church's already strong community café facility, which is seen as a key part of the church's future outreach programme.



## Lymm Hub to run an open event and IT recycling day

LYMM Sanctuary Hub and Business Centre, in partnership with Lymm Library, will be opening its doors for an open event from 1-5pm on Friday, October 20.

The public is invited to visit the whole building, meet the Hub team (expanded following recent lottery funding), and hear about local projects and volunteering opportunities.

In the event room, refreshments will be on offer and project leaders from the Memory Café, Singing for the Brain, Counselling Service and Lymm Companions will be talking about their services.

In the library building, the Digital Café, Lymm Parent & Carers, and Friends of Lymm Library Craft Group will be running activities and offering information about their groups.

Upstairs, Lymm Business Centre will be offering local workers a free hotdesking day to try out the space and view some of the private offices that have just become available for hire.

And back by popular request after a long Covid break, the Hub will be running its IT Recycling Scheme. Unwanted IT equipment can be dropped from 10am-3pm and will be securely removed and recycled by project partner, SE Recycling Ltd.

Meanwhile, in the garden (weather permitting), the LEAF team will share eco advice and resources as well as upcoming event news.

Lastly, the Community Garden team will be on hand to explain the next stage of work and sign up volunteer gardeners following an amazing donation from Lymm Jubilee WI who nominated the project as their 2023 fundraising cause. The garden project has also had support from Lymm Round

Table, Lymm Parish Council and Lymm Runners. And current project partners include Lymm Rocks, Lymm Gardening Club, Lymm in Bloom and The Lymm Tree which will be showing off its new autumnal and remembrance poppy sleeve.

Full details for the Open Event and IT Recycling Day plus further news and events can be found at: [www.lymmsanctuaryhub.co.uk](http://www.lymmsanctuaryhub.co.uk) or by contacting 01925 737950 or [admin@lymmsanctuaryhub.co.uk](mailto:admin@lymmsanctuaryhub.co.uk)



Gill Beckett, President of Lymm Jubilee WI, presenting a cheque to Kirsty James, Manager at Lymm Sanctuary Hub and Business Centre to support the Lymm Community Garden project.

  
For events, project news, groups, & our newsletter, scan the QR code or visit [www.lymmsanctuaryhub.co.uk](http://www.lymmsanctuaryhub.co.uk)

**Hub Open Day & IT Recycling Scheme**  
Friday 20 October 2023  
Details via website

   
**Free singing & fun for people living with or affected by memory loss**  
1.30-2.30pm, 1st & 3rd Wednesday  
Held at United Reformed Church  
Brookfield Road, Lymm, WA13 0QL

  
**Free support & friendship for people living with or affected by memory loss**  
1.30-3pm, 2nd & 4th Wednesday  
Held at United Reformed Church

Lymm Sanctuary Hub & Business Centre  
Enquiries to: 01925 737950  
[admin@lymmsanctuaryhub.co.uk](mailto:admin@lymmsanctuaryhub.co.uk)





Warrington  
& Vale Royal  
College

# YEAR 11 OPEN EVENING

**Monday 6<sup>th</sup> November**

**Warrington campus, 5.00pm - 8.00pm**

Our final **Open Evening of 2023** is a great way for you to explore our campuses and the wide range of technical courses, T Levels and apprenticeships on offer.

Chat to staff and current students, take part in subject activities and tour our state-of-the-art facilities, transformed by over £12 million of recent investment.

Register online:

**[wvr.ac.uk/openevenings](http://wvr.ac.uk/openevenings)**



## Are you ready to do something life-changing this autumn?

Whether you want to learn something new, change your career or increase your earning potential in your current role, Warrington & Vale Royal College has a course to suit you.

Whatever your passion or motivation, enrolling on an adult course at Warrington & Vale Royal College could be the best thing you do this year!

**Adult Enrolment Evening**

Tuesday 5<sup>th</sup> December, 5.00pm - 7.00pm

View our full range of courses:

**[wvr.ac.uk/adults](http://wvr.ac.uk/adults)**



Warrington  
& Vale Royal  
College

**ADULT COLLEGE**







# Back to the future as McGoff Construction celebrates 50th year

WITH recent care home developments in Lymm and Grappenhall, Principal contractor McGoff Construction is celebrating its 50th year in business with the launch of a short book called 'The Future is McGoff'.

Established in 1973 by Jim and Ethna McGoff, the company has evolved from trusted regional contractor to market leading national build partner delivering innovative new build and turnkey development solutions across the care, residential and commercial sectors.

Formerly McGoff & Byrne, McGoff Construction now sits at the heart of the privately-owned McGoff Group; a dynamic collective of likeminded construction and integrated support services businesses employing more than 1500 people across its head office and multiple operational locations with an annual turnover of £150 million.

Driven by family values, the McGoff Group is managed by Jim and Ethna's four sons, James, Declan, Dave and Chris, along with an experienced team of divisional business directors and managers who share the Group vision for continued growth.

Specifically McGoff Construction, along with Panacea and McGoff Group Facilities Services, have consolidated and are now known as McGoff Construction Services and are expertly led by Dean Johnston as managing director.

The company recently completed a care home, nursery and retirement apartments development on the site of the former Lymm Hotel and a new retirement/ care home development at Grappenhall on the site of the former Springbrook pub.

Chairman of McGoff Construction Services Declan McGoff commented: "Thanks to the hard work and support of our employee team, McGoff Construction has come so far and is almost unrecognisable from the company first established by Mum and Dad in 1973. However, our vision is to continue to expand, delivering a wholly sustainable

approach to the built environment while fully embracing our values of excellence, passion, innovation and collaboration.

"In an ever changing and challenging environment, the McGoff name signifies quality, agility and an unbreakable force for future generations to come. The importance of family values and a strong work ethic that we hope is reflected in the narrative of our book."

Designed and conceived by marketing director Sarah Sanderson, the full colour illustrated book called The Future is McGoff will be gifted to all employees and all operational Group settings including care homes, nurseries and apartment settings with special readings at schools and children's settings across Greater Manchester.

Marketing director Sarah Sanderson added: "I have worked for the McGoff Group for just over 11 years and witnessed the amazing evolution into the fantastic business that it is today. Anyone who knows the McGoff brothers will have experienced their hard work and determination, leading the business with passion and pride. We wanted to do something a little different to mark the 50 year milestone and it seemed fitting to go 'back to the future' with the story book that illustrates the business transformation and will easily accessible by young and old alike."

Operating from its Head Office at St George's Court in Altrincham, south Manchester, the McGoff Group has the seamless ability to acquire, design, build, operate and maintain across targeted healthcare, residential and commercial sectors making it the favoured choice for clients, funders, joint venture partners and supply chain partners alike. For further information, please visit [www.mcgoffgroup.com](http://www.mcgoffgroup.com)

## EXCHANGE YOUR GOLD AND SILVER FOR INSTANT CASH



All items of jewellery accepted

### Did you know...?

We accept silver jewellery, cutlery, tea sets, spoons, cigarette cases, candlesticks, trophies, trays, medals, coins and pocket watches.

**ROLEX WATCHES WANTED!  
ANY CONDITION**

Open: Tuesday-Saturday: 10am - 5.30pm

1 London Road, Stockton Heath  
(First floor entrance on Fairfield Road)

07544 486 621



**GOLD & SILVER  
BULLION DEALER**

## Need IT Support at Home?

- Skilled and Friendly Technicians
- PC and Laptop Support
- Home Visit or Remote Dial-in
- Antivirus/Malware Check
- Unlimited Support Time
- Equipment Supplied: Laptops, PCs, Printers & Bespoke Builds



**Call our Team: 01925 251143**

[sales@aspire-computers.com](mailto:sales@aspire-computers.com) | [www.aspire-computers.com](http://www.aspire-computers.com)



# Historic Transport Day organisers seek two new committee members



**ORGANISERS** of Lymm Historic Transport Day are starting to prepare again for their next event in June 2024 and are looking for a couple of extra volunteers to join the organising committee.

To help with the organising and set up of the event, they are hoping to grow the committee slightly and appealing for two extra people to join them.

Chair of the organising committee Jack Levy said: "After a successful event this summer, Lymm Historic Transport Day has now begun planning for the 2024 event. As next year will be even bigger and better, the committee is looking to recruit an extra couple of people to join them. Being part

of the organising committee is a hugely rewarding experience with a friendly team of people - it's a serious challenge putting on an event of this size, but it raises a lot of money for charity and brings the whole community together. If anyone is interested in finding out more then please email me at [lymmhistoricttransport@gmail.com](mailto:lymmhistoricttransport@gmail.com)."

No experience is necessary just plenty of enthusiasm and be spare evening a month.



## Royal personal jewellery

SPEAKER at the monthly meeting of Heatley WI was Frances Raftery, who spoke on Royal Personal Jewellery.

The talk was accompanied by historical facts, photographs and replica jewellery.

Members were able to try on

the tiaras – which resulted in a few laughs and much photography.

A request was put out for new committee members.

Monthly meetings are at Oughtlington Primary School in Howard Avenue, Lymm, at 7pm. More details from 01925 752014.

# Your pet questions answered

By Dr Diane Wilshaw  
Lymm Veterinary Surgery



**Q: How often will a dog need to visit a vet in their lifetime?**

A: A dog will probably make more frequent visits to the vet in the puppy and senior stages of their life. If your dog has an underlying condition, they will need medication reviews which can vary in frequency needed. Even if your dog is healthy and has no underlying health issues, you should have an annual check-up and vaccination each year, to make sure they are fit and healthy. Our health plans are the most cost-effective way to protect your pet, they cover 6-monthly health checks and vaccinations and is a great way to pick up any health issues early. Take a look at our website for more details on what our health plan covers.

**Q: My cat eats my dog's food. Will it do her any harm?**

A: Cats have different requirements in terms of vitamins, proteins, and nutrients than dogs and good quality pet food is formulated to provide these in the correct proportions. Specifically, cats need an amino acid called taurine. If your cat occasionally eats dog food it may cause an upset tummy but no lasting damage but if she eats dog food exclusively she could develop taurine deficiency which can lead to heart problems and blindness. Our team will be able to help advise on nutrition, contact us today to see how we can help.

**Q: My three-year-old Dachshund keeps licking and chewing at her front paw and is making it red raw, I have checked the paw over and**

**between her toes and can't notice anything out of the ordinary, why is she doing this to herself?**

A: It sounds like you need to get your dog checked over by a vet so that they can investigate this matter further, several factors can be contributing to your pooch's itchy feet. This can be an infection at the base of the claw or in between toes – these are caused by a build-up of bacteria and fungi, and medication is usually needed to clear these up. Your dog may suffer from allergies, which are causing her to itch and chew her feet. Talk to us today to see how we can help.

**Q: My cat has something in her stools. They are white and look like grains of rice what are they?**

A: What you are seeing are tapeworms. Tapeworms do not always look like long worms. We would always recommend speaking to us so we can check the weight of your pet and dose appropriately for size and their lifestyle. Flea and worm products are also covered under our health plans which help to spread the cost of these products, vaccinations, health checks etc. More information can be found on our website.

Give your kitten the best start in life with our

## Kitten Pack



**Our Kitten Pack includes:**

- Initial Cat Vaccination Course
- Microchip, and database registration
- 4 weeks free insurance

- One month worm and flea treatments
- Discount vouchers
- Cat care information book
- Sticker



ALL FOR  
**£60.00**

**TEL: 01925 752721**

10 Booths Hill Road, Lymm, Cheshire WA13 0DL





# Lymm artists make an exhibition of themselves

**LYMM artists Colin, Janet and their son, Peter Grimes, launched a new exhibition at the Technically Brilliant Gallery in Golden Square, Warrington at the beginning of October. The exhibition 'The Grimes Scene' is a family event featuring Colin's paintings, Janet's textiles and Peter's photographs.**

Colin is a former Lymm High School art teacher. He has created a series of multifaceted oil paintings of his world travels as well as including canvases of Lymm Village. He is fascinated by the complex overlapping images that are created when we look at a subject through the glass windows of cars, buses, trains, trams and shops producing fascinating and rich narratives.

Janet, a former St Gregory's High School art teacher, has created sculptural textiles, based on repeating patterns, textures and tessellations and, especially in this case, in architecture. Her main inspiration for this exhibition was an ancient, sun-bleached decorated pillar in Valletta. The stonemason's design on the Maltese pillar has been reworked in smocking to capture the light and dark effects and these are shown to good effect on sculptures and mannequins in this show.

Peter, an ex-student at Lymm

High School, has produced a series of stunning photographs of Nottingham, where he now lives. They are snapshots in time and are profoundly humbling and beautiful. Walking to work he noticed that the light was always different. He began to try to capture these fleeting moments on his iPhone. Observing these images really came to the fore during lockdown due to the lack of people and the better quality of light, creating a feeling of serenity. Peaceful moments. These moments are why he takes photos.

Janet and Colin worked in education for over 30 years with students and adult groups and organised Art Study Tours throughout Europe, USA and Russia, in which Peter also participated.

The exhibition will be on display until October 28th 2023. Open 10.30 - 4.30pm: closed Mondays.



## Obituary

### Brian Fray

THE funeral of Brian Fray, Albany Road, Lymm will take place on Tuesday 17th October at St Peter's Church, Oughtrington.

Brian, aged 85, passed away in hospital after a long illness.

He was a keen supporter of

Manchester United.

Brian leaves behind many great memories with wife Betty, daughters Janet and Carol and granddaughters Emily and Rebecca.

Funeral arrangements by John Burrows and Sons of Lymm.



Established 1878

**John Burrows & Sons**  
Fourth Generation Independent Family

**Funeral Directors**

Friendly & Professional Service  
Day or Night ~ J. Tandy

The Old Smithy, Mill Lane, Lymm,  
WA13 9SE Tel: (01925) 752501

Golden Charter  
Funeral Plans

www.johnburrowsandsons.co.uk



**CLASSIFIED**

Call 01925 631592 to advertise

**ACCOUNTANCY & BOOKKEEPING**

**BOOKKEEPER/ACCOUNTANT.** Licensed for maintaining financial records, VAT Returns, Payroll Service, Management Accounts, SAGE Software Consultancy. **Contact: 07815 617914.** (5/21)

**CARPET CLEANING**

**A1 STAINBUSTERS.** A Warrington company cleaning carpets, hard floors, Upholstery (Leather + fabric) and curtains in situ. FREE quotes for domestic and commercial. Approved carpet cleaners for Hancock and Woods for over 10 years. **Call John on 07765 314080** (18/23)

**SIMPLY THE BEST CARPET CLEAN YOU** will ever have. Cleaners UK Ltd. Est over 35yrs. Have your carpets & sofas beautifully deep cleaned leaving them fresh smelling & colour restored. Latest & best methods. Dry/steam. Leather cleaning, oriental rug specialist. Professional, reliable & affordable. **For more info call Neil Riley on 01925 264989 / 07831 336060 www.cleaners-uk.net** (14/24)

**CLEANING SERVICES**

**SIMPLY THE BEST CARPET CLEAN YOU** will ever have. Cleaners UK Ltd. Est over 35yrs. Have your carpets & sofas beautifully deep cleaned leaving them fresh smelling & colour restored. Latest & best methods. Dry/steam. Leather cleaning, oriental rug specialist. Professional, reliable & affordable. **For more info call Neil Riley on 01925 264989/ 07831 336060 www.cleaners-uk.net** (14/24)

**COUNSELLING**

**SAFE SPACE COUNSELLING.** Counsellor/ psychotherapist based in Lymm. Specialises in stress, anxiety, low self-esteem, trauma and relationship issues for adult clients. Daytime and evening slots available, offering both online and face-to-face sessions. **Contact Amy on 07852 686862 or visit www.safe-space-counselling.com** (18/24)

**ELECTRICAL CONTRACTOR**

**TRUST PROPERTY ELECTRICAL SERVICES.** NICEIC Part P Approved Contractor. All Electrical work undertaken. Inspection & Testing & PAT Testing. All work certified & guaranteed. **Call Tim on 07754409906 or 01925 601055** (12/23)

**RE-UPHOLSTERY**



RE-UPHOLSTERY  
CURTAINS • BLINDS  
FREE MEASURING & FITTING  
TEL:(01925) 756388  
www.orchardsoftfurnishings.co.uk (5/21)

**TAXI / PRIVATE HIRE**



Airport Transfer & Taxi Specialists  
**CALL MARTYN: 01925 751761**  
**MOBILE: 07881 786250** (13/24)

**TYRES**



Local Family Business. Est. 1997  
**01925 810000**  
**www.expresstyres.co.uk**  
*Order Online Today!*  
**Branded & Budget Tyres**  
Cars, Vans, 4x4's, Caravans  
Light Commercial  
& Performance Vehicles  
**The tyre service that comes to you at home or your place of work**  
**No Call Out Charge!**  
**BRIDGESTONE MICHELIN**  
**GOODYEAR Continental** (5/21)

**CAR SALES**



**We buy and sell**  
**QUALITY CARS**  
**Best price paid**  
**Telephone Peter on**  
**01925 575737 /**  
**07957 545479**  
23 Padgate Lane  
Padgate, Warrington  
Cheshire, WA1 3RS (5/21)

**GARDENING SERVICES**



- All aspects of tree surgery
- Stump grinding
- Waste removal
- Locally based
- Free quotation

**Beechwood Industries**  
www.beechwoodindustries.co.uk  
**01925 860544** (5/21)

**To advertise in the classified section from as little as £15+vat**  
**Call us now on 01925 631592**

**CLEANING SERVICES**



- Spring Clean Specialists
- Presenting your home for sale
- Moving house
- After building work cleans

**01925 266834**  
*... because you're worth it!* (5/21)

**PHOTOGRAPHY**

**FAMILY & PET PORTRAIT PHOTOGRAPHY**  
Lymm based Andrew Collier Photography specialises in family and pet portrait photography using Lymm locations as a backdrop. Personal service with beautifully made frames and albums. **Call Andrew on 01925 471091 or visit www.andrewcollierphotography.co.uk** (14/22)

**PAYROLL**

**WHY TRY TO BE A PAYE EXPERT?**  
Watkinson Black can provide a cost effective payroll service, releasing you to concentrate on your business. **For further details please phone: 01925 413210 or e-mail: info@warringtonaccountants.co.uk** (5/21)



**PRINT PROBLEMS SOLVED!**  
**FLYERS • POSTERS**  
**BANNERS • STICKERS**  
**MAGAZINES**  
**OFFICE STATIONERY**  
**CUSTOM PRINTS • FOLDERS**  
**CARDS • SIGNAGE**  
**THE NEW MEDIA CENTRE, OLD ROAD, WARRINGTON, WA4 1AT**  
**01925 240247 • INFO@247PRINT.NET • WWW.247PRINT.NET**

**Obituary Notices**

While Obituary notices are published free of charge, due to pressures on space, we can never guarantee they will be used and there can also be a delay of several months.

If you would like to guarantee a notice to appear in the next available issue, these can be purchased for £75 plus VAT which helps towards the running costs of your free community magazine.

To place an obituary notice or any other public/family notice please email [info@lymmlife.co.uk](mailto:info@lymmlife.co.uk)

Your notice will appear the same size as this advertisement.



The North West's leading supplier of concrete

[www.barrowmixconcrete.com](http://www.barrowmixconcrete.com)

# BARROW - MIX

1984-2023  
39TH YEAR  
ANNIVERSARY



**FREE SITE SURVEY**

**6 DAY SERVICE**

All areas covered

Free barrowing service

Only pay for what you lay

From half a cubic metre upwards

Levelling/laying service if required

(minimum charge)

We can supply

C25, C30, C35 Fibre Reinforced



VISA

MasterCard

Maestro

SOLO

Call NOW for a FREE quotation

**01565 734111 or 01942 722629**