

# Lymm Life Magazine

ISSUE 290 | SEPTEMBER 2023  
DELIVERED FREE TO 5000 HOMES



urban

BUILDING PROJECTS LTD

Extension & Building Renovation Specialists

Tel: 01925 730888

www.urbanbuildingprojects.co.uk



LYMM PARISH COUNCIL

Approved by Lymm Parish Council as the official magazine for Lymm



CJ ROUND LANDSCAPES

Landscaping - Design - Patios  
Decking - Fencing - Walls

01925 752468

www.cjroundlandscapes.co.uk  
facebook.com/cjroundlandscapes

24-7-EV  
Local installer of Electric Vehicle Charge Points for your Home & Office  
0330 133 4186

## Anyone for tennis?

Page 14

Regular news updates at [www.warrington-worldwide.co.uk](http://www.warrington-worldwide.co.uk)

# Editor's Comment



**Editor**  
Gary Skentelbery

**Production**  
James Bryan

**Advertising**  
James Balme  
Telephone  
01925 631592

**Editorial**  
01925 623633

**Email**  
info@lymmlife.co.uk

**Websites**  
www.lymmlife.co.uk  
www.culchethlife.com  
www.frodshamlife.co.uk  
www.warrington-worldwide.co.uk  
www.warrington.tv

**Address**  
New Media Centre  
Old Road Warrington  
WA4 1AT

*Lymm Life is published monthly by Orbit News Ltd.*

*The contents of this magazine are fully protected by copyright and nothing may be reprinted or reproduced without prior permission of the publishers.*

*The publishers are not liable for any statement made or opinion expressed by third parties in this publication.*

*Printed by TwentyFourSeven*

**CONGRATULATIONS to everyone involved at Manor Road Tennis Club and Lymm Rugby Club on the opening of the new all-weather floodlit tennis courts – a truly great achievement and team effort.**

These new facilities are a great addition to the village and will hopefully encourage more people to take up tennis.

Now Lymm can boast two excellent tennis clubs in the village – having been a member at Lymm myself for more than twenty years.

Tennis is one of those sports you can play from a very young age well into your 70s and even 80s if you remain fit enough – so really is a great sport to take up if you are looking to get more active – and with two clubs in the village you really are spoilt for choice.

Wouldn't it be fantastic if a local tennis player stepped out on centre court at Wimbledon one day in the

future.

Meanwhile the sale of the land at the former Manor Road club and new homes on the site will help towards improving the club house facilities at Lymm Rugby Club, which has continued to go from success to success, climbing up the league tables to a national level – while still remaining amateur.

Another great sporting achievement for the village.

Finally, congratulations to Tracey Turton and the team at Cheshire Natural Health on their 18th anniversary. I first met Tracey when she practiced at the former Cross Clinic in the village before embarking on her on business venture, which

has been another great success story.

Tracey has been a long-time supporter of Lymm Life and our sister publication Warrington Worldwide and has found the publications to be the best place to promote her business.

Without the support of businesses like Cheshire Natural Health we wouldn't be able to provide a free publication and news service for the village.

Next year we will be celebrating our 25th anniversary! Watch this space!

**Deadline for the October issue of Lymm Life is September 5**

*Celebrating 18 Years of Professional Natural Healthcare*

**CHESHIRE Natural Health**

01925 730123

Beehive House, Tarporley Road, Stretton

[www.cheshirenaturalhealth.co.uk](http://www.cheshirenaturalhealth.co.uk)

## N & J STANHOPE

### Coal and Log Supplies

Best Quality Coal  
Smokeless Fuel  
Logs Supplied in Bags and Bulk  
**Caravan Storage**  
**Open 6 Days. Closed Sunday**

**Broomedge Farm**  
**Burford Lane, Lymm WA13 0SE**

**Tel: 752830**  
**Mobile: 07979 785 421**

## YOUR LOCAL TAYLOR ROSE MW EXPERT

Operating out of 1-5 Palmyra Square South, Warrington, WA1 1BZ

Your trusted Warrington expert has transferred from FDR Law to Taylor Rose MW



We will provide you with clear concise advice:

#### Personal Services

- Clinical Negligence
- Crime & Extradition
- Dispute Resolution
- Employment & Benefits
- Family & Child
- Financial Matters
- Immigration
- Personal Injury
- Residential Property
- Wills & Probate

#### Commercial Services

- Alcohol & Entertainment Licensing
- Commercial Property
- Company & Commercial
- Costs
- Debt Recovery
- Directors Duties
- Dispute Resolution
- Employment Law
- Immigration
- Lender Services

Get in touch today to find out how we can help

Taylor Rose MW is a top 60 law firm with over 1,500 experts & offices nationwide.

Contact us on 01925 230000 or visit [www.taylor-rose.co.uk](http://www.taylor-rose.co.uk)



**TAYLOR ROSE<sup>MW</sup>**

SMART  
MODERN  
LAW

# Wildflower meadow is blooming – for second year running



**FOR the second year running, a linear wildflower meadow is blooming in Lymm's Ridgway Grundy Park.**

And for the second year in succession, Lymm Parish Council has won widespread praise for the display.

The "meadow" runs along the full length of the football pitch in the park and is a haven for bees and numerous other insects and a blaze of colour for local residents to admire.

A second, smaller "meadow" has been created in the park, near to the Bridgewater Canal.

The work was carried out by

Warrington Borough Council. But the idea came from the parish – who also paid for the work to be done.

The wildflowers faded and disappeared during the winter months and although some grew again this year, the two councils got together to re-seed them for this summer.

Perhaps surprisingly, the display suffered very little damage from footballers or spectators.

## Professional tree services

**Free Quote**

- Domestic
- Commercial
- Site Clearance
- Vegetation management
- Stump grinding
- Re-planting
- £10m public liability insurance

**Beechwood Industries**  
www.beechwoodindustries.co.uk

For more information, please call us on **01925 860544**

CP CS   Citb   CSES   Constructionline   City & Guilds NPTC Qualified   CHAS

# Pumpkin Picking

**VISIT PRIMROSE THIS OCTOBER TO PICK YOUR OWN HOME GROWN PUMPKINS**

**EVERY WEEKEND - 10AM-4PM**  
**EVERY FRIDAY EVENING - 5-9PM**  
**HALF TERM 23RD - 31ST OCT - 10AM-5PM**

**PUMPKINS - HALLOWEEN THEMED LUNCHES - CAFE - COFFEE - CAKES**  
**HALLOWEEN TRAIL - PAINT YOUR PUMPKINS - FACE PAINTING**  
**PHOTO OPPORTUNITIES - INDOOR TOILETS - CAR PARK**

 **PRIMROSE HILL**  
N U R S E R I E S  
Est. 1935

Warrington Road, High Legh, Knutsford, Cheshire WA16 0SQ 01925 752635  

# What's On

in conjunction with **Lymm Parish Council**



## LYMM PARISH COUNCIL

Next meeting Tuesday September 12th, 7:30pm  
Lymm Parish Hall  
Check [www.lymmparishcouncil.gov.uk](http://www.lymmparishcouncil.gov.uk) for details.

## LYMM THURSDAY EVENING BRIDGE CLUB

Lymm Village Hall every Thursday 7pm  
Details: 01925 759215

## MAPLE LODGE ART GROUP

Meet each Wednesday 9.30am - 11.30pm  
Oughtrington Community Centre, Lymm  
Details: 01925 755926

## ROTARY CLUB OF LYMM

Meets at Warburtons Parish Rooms on the 2nd and 4th Wednesday each month at 8pm  
Contact 01925 919053

## LOVING HEARTS & HANDS

Knitting for charity at Lymm Methodist Church, 2nd and 4th Thursday each month, 1.30pm - 3pm. Details: 01925 753298

## LUNCH AT THE BROW

Eagle Brow Methodist Church  
2nd Friday in the month  
Light lunches 12 noon fill 1.30pm.  
All proceeds to The Y Project Room at The Inn

## GARDENING CLUB

Meet Third Wednesday of the month  
Lymm Baptist Church, Higher Lane. 7.30pm  
Visitors welcome. £2 includes tea and cake

## LYMM FLORAL ART GROUP

Lymm Village Hall  
Third Monday of the month (except August and December) at 7.30pm. Visitors most welcome. Contact: 07876 176501  
[lymmfloralart.org.uk](http://lymmfloralart.org.uk)

## LYMM PHOTOGRAPHIC SOCIETY

Every 2nd and 4th Wednesday (ex Aug), 7.30pm  
Spread Eagle pub, Eagle Brow.  
See our rolling display in Lymm Library  
Details: [www.lymmphotosoc.org.uk](http://www.lymmphotosoc.org.uk)

## LYMM WINE AND BEER CIRCLE

3rd Wednesday of the month, 8pm  
The Spread Eagle Hotel  
Details: 01925 756444

## LYMM CONCERT BAND

Rehearsals every Thursday evening  
United Reformed Church, 8pm.  
Details: 01925 752934

## LYMM WI

Every second Wednesday, 2-4pm at Lymm Youth and Community Centre. Visitors welcome.

## LYMM AND DISTRICT MIXED VOICE CHOIR

Every Wednesday 7.30 Lymm Methodist Church. Contact 01925 601664.  
[caih@cstones.co.uk](mailto:caih@cstones.co.uk)

## PROBUS CLUB OF LYMM

A small, friendly social club for retired people. Meets on second and fourth Tuesdays at 2:15pm.  
Details: [www.LymmProbus.club](http://www.LymmProbus.club)

## LYMM DINGLE PROBUS CLUB

A friendly busy social club for retired men. Meets on alternate Thursday afternoons at Lymm Baptist Church.  
Details: [www.lymmdingleprobus.club](http://www.lymmdingleprobus.club)  
Club secretary 01925 759995

## FRIENDS OF LYMM LIBRARY CRAFT GROUP

Lymm Sanctuary Hub  
Fridays 1.30-3.00pm  
Details: 01925 754016

## HEATLEY WI

Meets the second Thursday of each month at Oughtrington Junior School, 7pm  
Visitors welcome. Details: 01925 752014

## LYMM & THELWALL U3A

Speaker meeting 3rd Thursday of the month (excluding August & December) at Thelwall Parish Hall 10.00am. Prospective members welcome.  
[www.u3asites.org.uk/lymm-thelwall/home](http://www.u3asites.org.uk/lymm-thelwall/home)  
Contact: [enquiries@lymmthelwallu3a.org.uk](mailto:enquiries@lymmthelwallu3a.org.uk)



## LYMM PARISH COUNCIL

Tuesday September 12th, 7:30pm  
See parish council website for details.

# Transport Day raises over £8,000 for good causes

**LOCAL good causes will benefit from over £8,000 raised at the recent Lymm Historic Transport Day.**

Confirming the organisations set to benefit from the annual event, organiser Jack Levy said: "We're incredibly proud to be able to offer such a sum to such worthy causes and are very grateful to all those who supported Transport Day by coming along on the day.

A contribution of £3,000 towards the upkeep of the Lymm Heritage Centre is the single largest donation. The centre was created by Transport Day founder Alan Williams, who handed over the organisation of this year's event to Jack and a team of volunteers.

Lymm Air Cadets will receive £700 for the purchasing of equipment that will help increase the level of training they can provide.

Lymm Swimming Club, a volunteer group that's been teaching kids to swim for 50 years is set to benefit from a bursary that will pay for a young volunteer to train as a professionally qualified

swimming instructor, enabling them to give back to the community by teaching even more children to swim.

Lymm High PTA will receive £500 to help fund new equipment for the school.

Warrington Community Transport (Dial-a-Ride), which gives over 300 free rides a week to elderly and disabled people across Warrington will receive £600. The money will go towards the purchase of a fifth vehicle to help them keep up with demand for the service.

Money is also being donated to Lymm Rugby Club, Ravenbank PTA, Oughtrington Luncheon Club and St Roccas Hospice, all of whom kindly provided volunteers for the event.

Other recipients are the Cheshire Blood Bikes, the Wooden Canal Boat Society, Bikeability, the Lancashire Mining Museum at Astley Green and Warrington Disability Partnership.



**G P BROADSMITH & SON**

**POOL FARM, LYMM**

*Bottled on the Farm from our Free Range Cows*

**DELICIOUS MILK FROM OUR HAPPY COWS DELIVERED TO YOUR DOOR!**

Here at Pool Farm we take good care of our free-range dairy cows. They produce fresh, quality milk which is bottled in our own farm dairy and delivered to local doorsteps. We also stock a range of associated products such as eggs and potatoes, all sourced from local farms.

Call 757655 or email [milk@broadsmith.com](mailto:milk@broadsmith.com) to discuss early morning deliveries to your doorstep and follow us on Facebook or Instagram at @broadsmiths where you can keep up to date with life on the farm!

**G P BROADSMITH & SON**  
POOL FARM, POOL LANE,  
STATHAM, LYMM, WA13 9BW  
TEL: 01925 757655  
**YOUR LOCAL DAIRY Est. 1932**

# ANDY CARTER MP

Member of Parliament for Warrington South

**I hold regular constituency advice surgeries at my Warrington South office and around the area.**

To make an appointment call **01925 231 267** or email **[Andy.Carter.MP@parliament.uk](mailto:Andy.Carter.MP@parliament.uk)**

Promoted by Stephen Taylor on behalf of Andy Carter MP of 1 Stafford Road, Warrington WA4 6RP. Funded through the allowances available to the Member of Parliament.

Call us on: **01942 607250**  
[www.elbfireplaces.co.uk](http://www.elbfireplaces.co.uk)  
70 Twist Lane, Leigh, Lancashire WN7 4DP

**Fire Surrounds, Stoves, Gas & Electric Fires**

**Is your conservatory too cold to use in Winter?  
Why not install a stove?**

**Established 40 YEARS**

No need to change your carpet - made to measure fireplaces

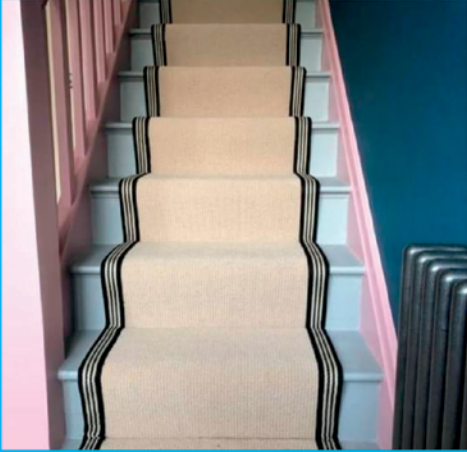
Over 75 displays over 2 floors

Live wood burning stove on display

# wilde & sons

CONTRACT AND DOMESTIC FLOORING  
A FAMILY RUN BUSINESS WITH OVER 25 YEARS EXPERIENCE

---



---

THIS YEAR WE CELEBRATE 10 YEARS  
OF PROVIDING FLOORING SOLUTIONS TO OUR CUSTOMERS

THANK YOU FOR YOUR CONTINUED SUPPORT

---

WE WORK WITH HIGH QUALITY BRANDS INCLUDING

KARNDEAN DESIGN FLOORING

LITTLE GREENE, WESTEX, VICTORIA CARPETS  
LOUIS DE POORTERE & MORE

---

VISIT US AT

6 EASTWAY, SALE M33 4DX T: 0161 973 7868  
4 FRAMINGHAM ROAD, BROOKLANDS M33 3SH T: 0161 962 7255

E: [enquiries@wildeandsons.com](mailto:enquiries@wildeandsons.com)

W: [www.wildeandsons.com](http://www.wildeandsons.com)

Social Media: [@wildeandsonsflooring](https://www.instagram.com/wildeandsonsflooring)



SCAN THE QR CODE TO BOOK YOUR FREE, NO OBLIGATION MEASURE

# best value school travel

## getting you to Lymm High School

get ready for the new  
school year with a  
great value annual  
bus pass. Apply  
online at  
[bit.ly/WOBdirect](http://bit.ly/WOBdirect)



12 months for the  
**£46**  
price of 10!

# Lymm Rotary Club brightens the lives of care home residents

**LYMM Rotary Club brightened the lives of residents of Cheshire Grange care home by delivering a car-full of summer bedding plants to the home in Booths Hill Road, Lymm.**

The plants have added colour to the home's Memory Lane balconies, their hanging baskets and the flower beds around the gardens.

Jo Eland, activities co-ordinator at Cheshire Grange said 'When the Rotary Club asked us what they could do to help us with this year, I had no hesitation in asking for bedding plants. The colourful planters on our Memory Lane balconies bring so much joy to our residents living with dementia, giving them a chance to help plant and look after the flowers as well as enjoying the summery environment with families and friends.'

Each year the Lymm Rotary Club make a donation to local care homes.

Cheshire Grange care home is run by Barchester Healthcare, one of the UK's largest care providers and provides residential care, nursing care and dementia care



## Less is More!

- Get paid quicker – Improving your cash flow
- Less time spent sorting old receipts – Free up countless hours each week.
- Less jargon and more proactive advice – Watch your business flourish.

*Don't let these issues hold your business back.*

To find out how we can remove your financial headaches call us:

**01925 761600**

or visit us at:

[www.stylesandco.co.uk](http://www.stylesandco.co.uk)

**styles** and co  
a xeladin company



**E SMITH AND SON  
PLANT CENTRE**

**WWW.LYMMPLANTS.CO.UK**

Where Gardeners Go!

**THE NURSERY, BOOTH'S LANE, LYMM, WA13 0PF  
01925 752459**

**FRUIT TREES, VEGETABLE PLANTS  
AND HERBS**

**PANSY AND VIOLA SHRUBS, TREES,  
GRASSES AND PERENNIALS**

**OPEN 7 DAYS: MONDAY TO SATURDAY 10AM - 4PM SUNDAY 11AM - 3PM**

# Day-care centre for dogs plan is thrown out by planners

**PLANS for a day-care centre for dogs at Lymm have been thrown out by Warrington planning chiefs.**

They have ruled that the proposals at Wet Gate Farm, in Wet Gate Lane, would be inappropriate development in the Green Belt.

A parking area for 15 vehicles and a "dog transportation bus" would have a detrimental impact on the visual openness of the Green Belt and there would be a high potential for a noise nuisance for nearby residents.

Lymm Parish Council had opposed the scheme and concerns had also been expressed by borough councillor Bob Barr and a local resident.

The proposal, involving an existing barn, was submitted by Bruce's Doggy Day Care – a national organisation established in Surrey in 2009, – which describes itself as being like a children's nursery but for dogs.

It would have aimed to attract dog owners from an area including Warrington, Lymm, Altrincham and Wilmslow.

They argued that the centre would provide a safe, controlled, and purpose-built environment for the care and exercising of dogs, making use of an existing barn on the site.

It would offer dog owners with an alternative to using dog



walking services in public areas which experience had shown could be intimidating to other users – particularly horse riders, cyclists and runners.

When full, the centre would have accommodated 70 dogs which would be brought to the site by air-conditioned "doggy buses" or in owners' cars.

Nearest homes to the site are about 85m away.

But borough council planning officers rejected the scheme.

## Jubilee Memorial Arch subjected to "act of mindless vandalism"

A "Jubilee Memorial Arch" erected at Lymm to commemorate the Diamond Jubilee of Queen Elizabeth II has been subjected to a "mindless act of vandalism."

Now local police are seeking information to help trace the person or persons responsible for the vandalism to the arch opposite Lymm Dam at the entrance to the Dingle, which was funded by Lymm Parish Council.

Local Cllr Graham Gowland said: "The Jubilee Memorial Arch was a great addition to the village,

acting as both a memorial to the jubilee but also directing visitors from the dam to the village.

"The mindless act of vandalism where the silhouette of the cross has been ripped out is a sorry reflection of how little some people think. I'll be asking what can be done to repair the damage in these cash-strapped times."

If anyone has any information regarding this damage contact the police via 101 quoting crime number 23000699076.



### LYMM HIGH SCHOOL OPEN EVENING

**Thursday 5th October 2023**  
5.00pm to 8.00pm

### SIXTH FORM OPEN EVENING

**Thursday 16th November 2023**  
5.00pm to 8.00pm

[www.lymmhigh.org.uk/sixth-form](http://www.lymmhigh.org.uk/sixth-form)

OUGHTRINGTON LANE, LYMM, CHESHIRE, WA13 0RB

01925 755458





# Eco-house plan – with mini-wildflower meadow and hedgehog house

**PLANS for a new detached house with its own mini-wildflower meadow, hedgehog house, woodland flowers and bird boxes have been submitted to Warrington planning chiefs.**

The property, in Higher Lane, Lymm would also have fencing with hedgehog gates and log piles to support insects and microscopic organisms.

Built to a contemporary traditional design, similar to other properties nearby, the house would have solar panels across its roof space to introduce additional elements of sustainability to the site.

The scheme is a resubmission of an earlier one which had proposed two houses on the site, which nestles between existing properties in Higher Lane.

Planners have been told: "The proposals have been carefully designed to respect the style and character of the site's location and are proposed as more contemporary than rural in character. The house is

constructed in Cheshire brick and tiled roof, and has full height high-level windows to the living/dining room.

"Windows in the property have been orientated to maximise views to the garden area."

There will be a detached garage with a vegetable garden behind it.

The property – which would be built in an area currently used as garden amenity by the owners of the adjacent house – would have a similar footprint to other nearby

properties.

Existing woodland, consisting mainly of oak, beech, chestnut and sycamore, would be retained.

The proposals are currently being considered by borough council planning officers.



## MP meets Royal Mail to resolve delivery delays at Lymm

WARRINGTON South MP Andy Carter has raised concerns with Royal Mail managers at the WA13 delivery office about prolonged delays with the delivery of letters in the Lymm area.

The MP's office has received numerous emails from constituents reporting waits of up to ten days to receive letters, some of which have included hospital appointments and important documents requiring their signature.

Royal Mail acknowledged the problems, telling Mr Carter that recent staff shortages had been made worse by their inability to recruit during the recent Royal Mail strike. However they were confident of getting regular deliveries in Lymm back on track, having recruited

twelve new employees due to start this month.

Mr Carter said: "I've received a lot of correspondence from constituents in Lymm who've been understandably very concerned about not receiving their mail, so I'm pleased that Royal Mail took the time to update me on their actions to tackle this backlog. The managers who oversee deliveries in Lymm have assured me that they are working hard to resolve the issues and the recruitment of new posties should help significantly."

"The way we use the postal service has totally changed over the last decade. Many more parcels are delivered each day, thanks to online shopping but letter volumes, greetings cards and sales catalogues

have dropped massively. However people who still depend on receiving important correspondence by post should have the reassurance it will

be delivered regularly and on time. I'll be following up with residents in Lymm to keep a watch on Royal Mail service improvements."



## NOW OPEN IN STOCKTON HEATH



# Chambers Fletcher Solicitors

Residential Property

Family Law & Divorce

Commercial Property

Wills, Trusts & Probate

## 01925 359005

Cambridge House, Suite 4, 16 Walton Road, Stockton Heath, Warrington, WA4 6NL

# Care home residents enjoy festival-themed 'Keatefest' party

**RESIDENTS of Keate House care home recently gathered for a sunny afternoon at a festival-themed party.**

Family members joined in the fun too. There was a prize for the funniest item found on the entrance bag search, which turned out to be a rubber duck.

The care home staff had transformed the communal area into a vibrant festival ground, with

colourful decorations, a dancefloor and photo booth. Residents were encouraged to come dressed in their most festive outfits and glittery accessories.

The party kicked off with live music from GBT contestants 'Yours Truly' playing their ukulele singing popular tunes that the residents could sing along to.

The party ended with a lively dance performance by staff members, who were dressed as unicorns and sharks. Their energetic moves brought smiles to the faces of the residents, encouraging them to join in and show off their own dance moves.

Laughter filled the garden as the residents moved around the dancefloor as the care home staff supported and encouraged them.



## Reskill, Retrain and Reinvent Yourself

Whether you're looking to don a cap and gown, upskill your CV, or simply make new friends whilst learning something new, we offer a huge range of adult courses.

Depending on your circumstances, many courses will be free or low-cost, with accredited courses fully-funded for those in receipt of certain benefits.

As Warrington's leading provider in adult education and an Ofsted registered Grade 2 'Good' provider, you'll enjoy a friendly and high-quality learning experience. For those who need more flexibility, there are online and distance learning courses, designed for you to learn from the comfort of your own home.

### What are you waiting for?

Download our brand-new Adult College Course Guide and enquire today: [wvr.ac.uk/adult](http://wvr.ac.uk/adult)



## Don't let the cost of learning put you off studying!

Are you thinking of returning to education, but are understandably worried about the cost? Don't be - there is a wide range of financial support available to adult students, including:

- College bursary
- Advanced Learner Loan
- Student Loan for Higher Education courses.



### Many of our courses are even FREE!\*

To find out more about the above options and to put your mind at ease, visit: [wvr.ac.uk/adult](http://wvr.ac.uk/adult) or speak to our friendly Learner Services Team at 01925 494 400 or [learner.services@wvr.ac.uk](mailto:learner.services@wvr.ac.uk).

\*Terms & conditions apply.



## Enrolment opening times:

**Monday:** 9.00am - 5.00pm

**Tuesday:** 9.00am - 5.00pm

**Wednesday:** 9.00am - 5.00pm

**Thursday:** 9.00am - 7.00pm

**Friday:** 9.00am - 4.30pm



## EXCHANGE YOUR GOLD AND SILVER FOR INSTANT CASH



All items of jewellery accepted

### Did you know...?

We accept silver jewellery, cutlery, tea sets, spoons, cigarette cases, candlesticks, trophies, trays, medals, coins and pocket watches.

**ROLEX WATCHES WANTED!  
ANY CONDITION**

Open: Tuesday-Saturday: 10am - 5.30pm

1 London Road, Stockton Heath  
(First floor entrance on Fairfield Road)

07544 486 621



**GOLD & SILVER  
BULLION DEALER**

## Need IT Support at Home?

- Skilled and Friendly Technicians
- PC and Laptop Support
- Home Visit or Remote Dial-in
- Antivirus/Malware Check
- Unlimited Support Time
- Equipment Supplied: Laptops, PCs, Printers & Bespoke Builds



**Call our Team: 01925 251143**

sales@aspire-computers.com | www.aspire-computers.com

## Improve, don't move!

Maximise the value of your home.  
It's time to upgrade your garage door to a Garolla.



**£895** • COMPACT UP TO 2.4M  
• WHITE  
• FITTED PRICE

**£2,740** • PREMIUM 5.1M  
• BLACK  
• FITTED PRICE

We've been trusted by 100,000 customers to transform their home. It's no wonder we're the most recommended on Trust Pilot and Check-a-Trade, so you can rely on us when we say we are the UK's number one! Our straightforward approach is backed by our trusted local engineers who are on-hand to guide you through the whole process.

### From our door, to yours.

- SPACE-SAVING – MAXIMISE GARAGE HEADROOM
- SECURITY-ENABLED AUTO-LOCKING SYSTEM
- CHOICE OF 21 COLOURS TO MATCH YOUR HOME
- REMOVAL AND RECYCLING OF YOUR OLD DOOR
- DEDICATED GAROLLA AFTER-CARE TEAM



**GAROLLA**  
ELECTRIC GARAGE DOORS

**T: 01925 205 009**

Lines are open 7 days a week

Online at: [www.garolla.co.uk](http://www.garolla.co.uk)

BESPOKE ELECTRIC DOORS  
MANUFACTURED IN THE UK



# Fly-tipping set to be cleared from former factory site



## EYESORE fly-tipping at a former factory site in Lymm earmarked for housing is set to be cleared imminently.

Local residents hit out at the fly-tipping at the former Elastomer site bordering Millers Lane and Carlton Road, now earmarked for housing, saying the situation had been getting worse over a period of three years.

A concerned resident who contacted Warrington Worldwide said: "Industrial fly-tipping has been going on for nearly three years and nothing seems to be happening, just more white vans turning up and sometimes skip loads of industrial waste, old electrical items, cookers, beds, mattresses, building materials and other household mess – has been dumped and fly-tipped on this site over in Lymm, its got a lot worse this year.

"There have been tales of rats and other vermin, over the last few weeks – more and more keeps turning up and nothing is being done, the local council need to be pressed into further action, we have emailed a number of times and the issues just keep rising."

Cllr Graham Gowland commented on the issues raised, saying "The former factory site was vacated when Elastomer, a long-term employer in Lymm, moved to Leyland. This left a vacant brownfield site that was passed for outline development in 2021. As part of the outline approval, there were some specific areas that still needed clarifying, including road layouts. Demolition of the factory was approved, and this has been carried out, but we are still awaiting information on the 'reserved matters'. Residents have raised concerns about the demolition debris still on the site, but also what appears to be fly-tipped waste. I have raised this issue of the waste with the relevant officers and am following up the outstanding planning issues. I'd encourage residents to always use the planning process to raise their concerns and can confirm Lymm Parish Council has asked for any final decisions to be made at a DMC meeting. I'm a Lymm Councillor, but not the Ward

Councillor. Cllr Marks has already raised residents' concerns, and I'm happy to support with this evolving issue during the holiday period."

Cllr Gowland added: "The site agent has just confirmed the dumped waste will be cleared within a week. He also confirmed it wasn't their waste."

A Warrington Borough Council spokesperson said: "A formal notice was issued to the landowners requesting they remove all waste material from the land and the owners have confirmed that the site will be tidied up imminently. Evidence of who fly-tipped the waste has been provided and we are currently investigating."

"In some instances, waste is on private land which is for the landowner to remove even if it has been dumped illegally. If the landowner identifies evidence that would assist us to take action then we will investigate. Criminal action can and will follow where evidence is found, leading to those responsible for dumping waste. That might be from eye witnesses or from CCTV or from within the waste itself."

"We are sympathetic to local landowners who suffer from the blight of fly-tipping and then additionally have the financial burden of removal of that waste. Equally, we recognise that fly-tipping blights our communities and local residents are keen to ensure it is removed quickly and those responsible prosecuted. It's key that anyone who witnesses fly-tipping contacts us with as much information as possible so we can investigate and take action."

"Issues can be reported to the Contact Centre on 01925 443322 or via [warrington.gov.uk/report](http://warrington.gov.uk/report)."

Planning permission was originally approved for nine three-storey properties on the site in October 2020 but never progressed. A more recent application suggested nine four-storey properties.

# Historic window frames to be replaced at high school



**PLANNING** chiefs have given the go-ahead for the replacement of historic window frames and doors in one of the oldest parts of Lymm High School.

B Block is in the centre of the school site and is part of the former Oughtrington Hall, which dates from around 1810 and is a Grade 2 Listed building.

The work will involve the loss of some of the historic fabric of the building, but planners say this is outweighed by the fact that the building will be protected from further deterioration and preserved for future use.

The window frames and doors involved are believed to be more than 150 years old and passed their useful life. They will be replaced with timber, double-glazed units reflecting the character of the building.

Currently, the building is largely unaltered other than for some recent extensions at the rear.

The proposals were discussed with Warrington Borough Council's

heritage officer before being drawn up.

A report by planning officers states: "There would be a clear benefit to the replacement of the windows and doors to the Listed Buildings as it would enable the temperature of the building to be controlled and would bring the building back into a good state of repair, preventing further loss of listed fabric and slow deterioration of the building."

Built in the neoclassical architectural style, the former Oughtrington Hall, is rendered of brick with stone dressings and a slate roof. At the centre of the entrance front is a wide canted bay containing a porch with paired Tuscan columns. On each side of the porch are three-light windows under a segmental arch.

## Plans drawn up for improvements to canal-side Sanctuary Cafe

PLANS have been drawn up for the partial rebuilding and extension of the canal-side Sanctuary Cafe attached to Lymm United Reformed Church.

The proposals aim to make people more aware of the cafe's existence – currently "hidden" between two larger local landmarks, the church and Lymm Library.

They would highlight the entrance to the cafe without detracting from local heritage assets – the church and the library.

A report submitted to Warrington Borough Council's planning department says the development would seek to slightly increase the footprint of the building and reconfigure its layout.

It states: "Previous development has led to some undesirable internal layouts, dark internal spaces and unusual proportioned rooms which

make the functioning of the cafe and the church awkward.

"Kitchen space is small and storage space is not sufficient, as all the equipment essential for keeping the cafe running is allocated in almost every single room, which is very inconvenient and somewhat disorganised."

The proposals would include a larger kitchen and also seek to improve the current entrance to the church.

The cafe – which also serves as the church hall and a bookshop – will be modernised and a Juliet balcony overlooking the adjacent Bridgewater Canal will be added.

A number of poor quality trees will have to be removed but the existing car park will remain unchanged.

Borough council planners are now studying the proposals.

# Your pet questions answered

By Dr Diane Wilshaw  
Lymm Veterinary Surgery

## Senior pet special!

**Q: I've noticed that my dog has plaque build-up on her teeth, what should I do?**

A: Ideally, you should be brushing your dog's teeth daily, just like you would your own to stop the build-up of plaque. There are special dog toothbrushes and toothpastes available. As your dog already has a build-up of plaque, she will need a scale and polish at the vets to remove it.

**Q: My cat has been diagnosed with diabetes and will now need a daily insulin injection for the rest of her life. Is it possible to treat the cause of diabetes rather than control the disease?**

A: Nobody knows for sure what the causes of diabetes are but for whatever reason, your cat is not producing enough of the hormone 'insulin' and sadly, the only way to control this is with regular insulin injections.

**Q: I have two dogs, one elderly and one much younger. They are well bonded to each other. We are facing the fact that our elderly Labrador may have to be put to sleep soon and we were wondering what we can do to reduce the stress to our other dog?**

A: We don't really know how much dogs understand about death, but we do know that life can change dramatically for a dog who loses the companionship of another dog. Dogs are pack animals by nature and two dogs living together will have established who is the leader and who is the follower and will have established habits, routines,



boundaries, and rules which in return will give them confidence, certainty, and familiarity.

We do know that when a dog loses a canine companion their behaviour may change, for example their appetite, where they sleep, affection levels etc. It is also widely believed that dogs will pick up on our own emotions.

It is important with any dogs to establish yourselves as the 'leader'. There are many good dog trainers who can help you with positive training to reinforce the bond between dog and handler. The dog(s) will then look to you for assurance and confidence and at this very sad time.

**Q: My 10-year-old cat has started limping on his front left leg. He doesn't seem in pain and doesn't mind me touching the leg, and it isn't swollen. Do you have any suggestions?**

A: Pets don't always show pain in the same way that we do, but changes in habit can be indicative of pain. In a senior cat the most likely cause is arthritis, and your cat should probably visit the vet. We currently have senior cat clinics running at a heavily discounted rate which may also be of interest, to rule out any other disease.

Give your puppy the best start in life with our

## Puppy Pack



**Our Puppy Pack includes:**

- Full Puppy Vaccination Course
- One month worm and flea treatments
- Puppy diary

- Discount vouchers
- 4 weeks free insurance
- Initial health check with a vet
- Lead and sticker
- Puppy information book



Lymm  
Veterinary  
Surgery

www.willowsvetgroup.co.uk

ALL FOR

£60.00

TEL: 01925 752721

10 Booths Hill Road, Lymm, Cheshire WA13 0DL



@LymmVets



@LymmVets

# Manor Road Tennis Club to celebrate new courts

**MANOR Road Tennis Club has moved to a new home in the Walled Garden at Lymm Rugby Club and will be holding an official opening ceremony on Sunday, September 10 in celebration.**

The four new, all-weather, artificial, Tiger Turf, floodlit courts are attracting a lot of attention locally and currently available to play on, both for MRTC members and on a 'Pay and Play' basis for non-members.

'We are absolutely delighted to have moved from our old site in Manor Road to these new, state-of-the-art courts in the Walled Garden,' commented Chair Keith Moss. 'I am excited about what the future holds and looking forward to building up the membership.'

'Our main objective is to make tennis more accessible locally, especially to younger age groups and new players,' he added.



'Tennis is such a sociable sport and we cater for all levels, from beginners to experienced players.' Coaching has already started on the new courts, and a comprehensive coaching programme is scheduled for adults and juniors, including summer tennis camps for juniors during the school holidays.

Local dignitaries, sponsors and the media from across south Cheshire are being invited to the celebratory opening. The courts will also be open and there will be opportunities for visitors, guests and members to play social tennis on the day in a relaxed and informal way, with a barbeque offering a range of freshly cooked meals to purchase.

The old site in Manor Road has been awarded planning permission for the development of four semi-detached properties, which will help fund the building of a planned, new clubhouse for the multi-sports club at Lymm Rugby Club, which now includes tennis, hockey, squash and rugby union.

For more information visit <https://clubspark.lta.org.uk/manorroadtennisclub>



## Twin Town fundraisers

FOLLOWING on from the successful trip to Lymm by their friends from Meung sur Loire, Lymm Twin Town society had an enjoyable barbeque at the farm of members Richard and Karen Clegg at the beginning of July- and the weather was sunny!

The next events were a money

raiser, afternoon teas at High Legh Community centre at the end of July which will be followed by a French film evening on Sunday 1 October.

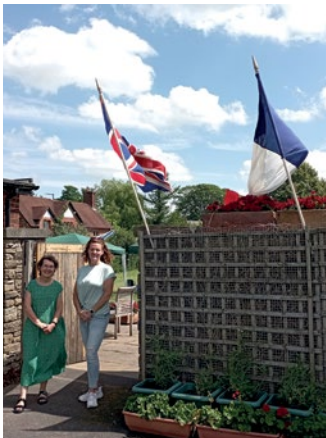
Lymm has been twinned with Meung sur Loire for over 50 years.

Meung is a delightful small town about 10 miles west of Orléans in the Loire valley, an hour south of Paris.

In Lymm they hold social events during the year both to keep

in touch with each other and raise money for the visit of their counterparts from France.

For more details visit [lymmtowntownsociety.wixsite.com/lymmtowntown](http://lymmtowntownsociety.wixsite.com/lymmtowntown)



Established 1878  
**John Burrows & Sons**  
 Fourth Generation Independent Family  
**Funeral Directors**  
 Friendly & Professional Service  
 Day or Night ~ J. Tandy  
 The Old Smithy, Mill Lane, Lymm,  
 WA13 9SE Tel: (01925) 752501  
 Golden Charter  
 Funeral Plans  
[www.johnburrowsandsons.co.uk](http://www.johnburrowsandsons.co.uk)

**CLASSIFIED**

Call 01925 631592 to advertise

**ACCOUNTANCY & BOOKKEEPING**

**BOOKKEEPER/ACCOUNTANT.** Licensed for maintaining financial records, VAT Returns, Payroll Service, Management Accounts. SAGE Software Consultancy. **Contact: 07815 617914.** (5/21)

**CARPET CLEANING**

**A1 STAINBUSTERS.** A Warrington company cleaning carpets, hard floors, Upholstery (Leather + fabric) and curtains in situ. FREE quotes for domestic and commercial. Approved carpet cleaners for Hancock and Woods for over 10 years. **Call John on 07765 314080** (16/23)

**SIMPLY THE BEST CARPET CLEAN YOU** will ever have. Cleaners UK Ltd. Est over 35yrs. Have your carpets & sofas beautifully deep cleaned leaving them fresh smelling & colour restored. Latest & best methods. Dry/steam. Leather cleaning, oriental rugs specialist. Professional, reliable & affordable. **For more info call Neil Riley on 01925 264989 / 07831 336060 www.cleaners-uk.net** (14/24)

**CAR SALES**

**PARKVIEW CAR SALES**

**We buy and sell QUALITY CARS**  
**Best price paid**  
**Telephone Peter on 01925 575737 / 07957 545479**  
 23 Padgate Lane  
 Padgate, Warrington  
 Cheshire, WA1 3RS (5/21)

**CHILD CARE**

**OFSTED REGISTERED CHILDMINDER**  
 Lives close to Ravenbank School. Full time or Part time placements available. Pick up and drop off from Ravenbank School or Rosebank Nursery. From ages 0-12 years. **For more information contact Carole on 07731 089656 or leave a message on 01925 755108** (14/23)

**CLEANING SERVICES**

**arleys angels**

- Spring Clean Specialists
- Presenting your home for sale
- Moving house
- After building work cleans

**01925 266834**  
*... because you're worth it!* (5/21)

**CLEANING SERVICES**

**SIMPLY THE BEST CARPET CLEAN YOU** will ever have. Cleaners UK Ltd. Est over 35yrs. Have your carpets & sofas beautifully deep cleaned leaving them fresh smelling & colour restored. Latest & best methods. Dry/steam. Leather cleaning, oriental rugs specialist. Professional, reliable & affordable. **For more info call Neil Riley on 01925 264989 / 07831 336060 www.cleaners-uk.net** (14/24)

**COUNSELLING**

**SAFE SPACE COUNSELLING.** Counsellor/psychotherapist based in Lymm. Specialises in stress, anxiety, low self-esteem, trauma and relationship issues for adult clients. Daytime and evening slots available, offering both online and face-to-face sessions. **Contact Amy on 07852 686862 or visit www.safe-space-counselling.com** (18/24)

**ELECTRICAL CONTRACTOR**

**TRUST PROPERTY ELECTRICAL SERVICES.** NICEIC Part P Approved Contractor. All Electrical work undertaken. Inspection & Testing & PAT Testing. All work certified & guaranteed. **Call Tim on 07754409906 or 01925 601055** (15/23)

**GARDENING SERVICES**

- All aspects of tree surgery
- Stump grinding
- Waste removal
- Locally based
- Free quotation

**Beechwood Industries**  
 www.beechwoodindustries.co.uk  
**01925 860544** (5/21)

**PHOTOGRAPHY**

**FAMILY & PET PORTRAIT PHOTOGRAPHY**  
 Lymm based Andrew Collier Photography specialises in family and pet portrait photography using Lymm locations as a backdrop. Personal service with beautifully made frames and albums. **Call Andrew on 01925 471091 or visit www.andrewcollierphotography.co.uk** (14/22)

**PAYROLL**

**WHY TRY TO BE A PAYE EXPERT?**  
 Watkinson Black can provide a cost effective payroll service, releasing you to concentrate on your business. **For further details please phone: 01925 413210 or e-mail: info@warringtonaccountants.co.uk** (5/21)

**RE-UPHOLSTERY**

**Orchard Soft Furnishings**

RE-UPHOLSTERY  
 CURTAINS • BLINDS  
 FREE MEASURING & FITTING  
 TEL:(01925) 756388  
 www.orchardsoftfurnishings.co.uk (5/21)

**TAXI / PRIVATE HIRE**

**Horn's**

Airport Transfer & Taxi Specialists  
**CALL MARTYN: 01925 751761**  
**MOBILE: 07881 786250** (13/24)

**TYRES**

**EI/ERGREEN** Centre of Excellence

**Express**  
 Mobile Tyres

Local Family Business. Est. 1997  
**01925 810000**  
 www.expresstyres.co.uk  
*Order Online Today!*

**Branded & Budget Tyres**  
 Cars, Vans, 4x4's, Caravans  
 Light Commercial  
 & Performance Vehicles

**The tyre service that comes to you at home or your place of work**

**No Call Out Charge!**

**BRIDGESTONE MICHELIN**  
**GOODYEAR Continental** (5/21)

**To advertise in the classified section from as little as £15+vat**  
**Call us now on 01925 631592**

**twentyfour seven design & print ltd**

We supply and fit all types of signage: self adhesive graphics, glass, metal, wood, perspex, foamex plastic.  
 Call or email for a free site visit.

01925240247 info@247print.net www.247print.net

**Obituary Notices**

While Obituary notices are published free of charge, due to pressures on space, we can never guarantee they will be used and there can also be a delay of several months.

If you would like to guarantee a notice to appear in the next available issue, these can be purchased for £75 plus VAT which helps towards the running costs of your free community magazine.

To place an obituary notice or any other public/family notice please email [info@lymmlife.co.uk](mailto:info@lymmlife.co.uk)

Your notice will appear the same size as this advertisement.

The North West's leading supplier of concrete

[www.barrowmixconcrete.com](http://www.barrowmixconcrete.com)

# BARROW - MIX

1984-2023  
39TH YEAR  
ANNIVERSARY



**FREE SITE SURVEY**

**6 DAY SERVICE**

All areas covered

Free barrowing service

Only pay for what you lay

From half a cubic metre upwards

Levelling/laying service if required

(minimum charge)

We can supply

C25, C30, C35 Fibre Reinforced



VISA

MasterCard

Maestro

SOLO

Call NOW for a FREE quotation

**01565 734111 or 01942 722629**