

Lymm Life Magazine

ISSUE 287 | JUNE 2023

DELIVERED FREE TO 5000 HOMES



urban

BUILDING PROJECTS LTD

Extension & Building Renovation Specialists

Tel: 01925 730888

www.urbanbuildingprojects.co.uk



Picture: John Hopkins



LYMM PARISH COUNCIL

Approved by Lymm Parish Council as the official magazine for Lymm



Get to know your Hub

Find out more by scanning the QR code or visiting www.linktr.ee/lymmshub



Lymm Sanctuary Hub & Business Centre
Davies Way, Lymm, WA13 0QW
01925 737950 / admin@lymmshub.co.uk

May Queen blessed with glorious sunshine

Centre Pages



CJ ROUND LANDSCAPES

Landscaping - Design - Patios
Decking - Fencing - Walls

01925 752468

www.cjroundlandscapes.co.uk
[facebook.com/cjroundlandscapes](https://www.facebook.com/cjroundlandscapes)

Regular news updates at www.warrington-worldwide.co.uk

Editor's Comment



Editor
Gary Skentelbery

Production
James Bryan

Advertising
James Balme
Telephone
01925 631592

Editorial
01925 623633

Email
info@lymmlife.co.uk

Websites
www.lymmlife.co.uk
www.culchethlife.com
www.frodshamlife.co.uk
www.warrington-
worldwide.co.uk
www.warrington.tv

Address
New Media Centre
Old Road Warrington
WA4 1AT

*Lymm Life is published
monthly by Orbit News Ltd.*

*The contents of this magazine
are fully protected by copyright
and nothing may be reprinted
or reproduced without prior
permission of the publishers.*

*The publishers are not liable for
any statement made or opinion
expressed by third parties in this
publication.*

Printed by TwentyFourSeven

THE Public Inquiry to consider plans for the massive Six56 logistics site near Lymm services was surprisingly adjourned without warning due to pollution concerns on Manchester Mosses!

While not in Lymm, the huge logistics depot proposed by Langtree would have serious traffic implications along with the associated pollution problems.

After opening the inquiry was suddenly adjourned (after the Inspector had taken a day off for strike action) because a letter had just received from 'Natural England' which queried whether the correct legal process had been carried out with respect to the effect of traffic on the Manchester Mosses alongside the nearby M62.

Natural England is the government body whose purpose is to 'help conserve, enhance and manage the natural environment for the benefit of present and future generations, thereby contributing to sustainable development.

I find it surprising that the public inquiry is proceeding at all after Government inspectors had previously ruled the giant Six56 development next to Exit 20 on the M6 at Grappenhall, should be removed from the council's Local Plan due to there not being sufficient special reasons to allow building on Green Belt.

Lymm Councillor Ian Marks was present at the Inquiry and was equally shocked by this turn of

events and cannot understand why the problem only emerged at such a late stage in the process.

The law requires there to be a thirty-day consultation process to consider the issue to do with the Mosses, which delays the re-start of proceedings and due to diary commitments of participants, the first available date for a resumption is likely to be October. Like Cllr Marks I find it surreal that Mosses located just outside the Warrington Borough could have more influence than the people of South Warrington!

The application, by Langtree PP and Panattoni, for the proposed development on land at Bradley Hall Farm, was called in by the Secretary of State for a decision, with the public inquiry due to sit for eight days - from 9 -12 May and from 23-26 May at The Base, Dallam Lane.

The Planning Inspectorate has now confirmed that the inquiry has been adjourned, pending the submission of further information by the applicant. The inquiry is scheduled to reopen on Monday 9 October.

I am baffled how Langtree can justify even continuing with this appeal and attempt to build on

the Green Belt when Government Inspectors have already indicated it is a no go!

By the time the inquiry is heard the Local Plan will hopefully have been adopted and the Green Belt remain protected.

Meanwhile, closer to home, it was great to see the sun shining for Lymm May Queen - probably the finest weather we have seen for the occasion for some time. Well done to all those who gave up their time to help organise it.

**Deadline for the July
issue of Lymm Life is
June 6**

N & J STANHOPE

Coal and Log Supplies

Best Quality Coal
Smokeless Fuel
Logs Supplied in Bags and Bulk
Caravan Storage
Open 6 Days. Closed Sunday

**Broomedge Farm
Burford Lane, Lymm WA13 0SE**

**Tel: 752830
Mobile: 07979 785 421**



**LYMM
HIGH SCHOOL**

**Proud to
be part of
the Lymm
community
for over
400 years**

lymmhigh.org.uk



Coronation crown lights up Heritage Centre



LYMM artist, Colin Grimes, has done it again!

The retired head of Art at Lymm High School who created Lymm Heritage Centre's lifesize chirotherium has painted a larger than lifesize Coronation crown with a stunning extra dimension.

The crown comes complete with a hundred or so twinkling jewels (inset LED lights) that shimmer on and off between 5pm and 10pm every evening in the window of Lymm Heritage Centre. It's the focal point of the latest window display put together by Colin and his wife Janet for the centre to celebrate the Coronation.

"We are blessed to have such talented volunteers on our

team" Heritage Centre chair Alan Williams said. "Colin never ceases to amaze us with what he produces".

Inside the centre there is a five minute movie on the big screen that recaptures the lavish local celebrations for the Coronation of George V including a giant illuminated framework round Lymm Cross.

Younger visitors can make and take their own jewelled crown as a memento of the occasion. The film and activities will run through May. It's all free, donations welcome.

Lymm Heritage Centre is open 12-4 Thursday to Sunday.

Professional tree services

Free Quote

- Domestic
- Commercial
- Site Clearance
- Vegetation management
- Stump grinding
- Re-planting
- £10m public liability insurance

Beechwood Industries
www.beechwoodindustries.co.uk

For more information, please call us on **01925 860544**

CP CS Citb CSES Constructionline City & Guilds NPTC Qualified CHAS

Summer bedding plants and hanging baskets

GROWN IN CHESHIRE

Now in stock

PRIMROSE HILL NURSERIES
EST. 1925

OPEN TO THE PUBLIC AND TRADE: MON-SAT 8.30am-5pm. SUN 10am-4pm.
WARRINGTON ROAD, HIGH LEGH, KNUTSFORD, CHESHIRE WA16 0SQ. 01925 752635

f i

What's On

in conjunction with Lymm Parish Council



LYMM PARISH COUNCIL
 Tuesday June 13th, 7:30pm
 Lymm Parish Hall
 Check www.lymmparishcouncil.gov.uk for details.

LYMM MAY QUEEN
 Saturday 13th May

LYMM THURSDAY EVENING BRIDGE CLUB
 Lymm Village Hall every Thursday 7pm
 Details: 07708 172015

MAPLE LODGE ART GROUP
 Meet each Wednesday 9.30am - 11.30pm
 Oughtrington Community Centre, Lymm
 Details: 01925 755926

ROTARY CLUB OF LYMM
 Meets at Warburtons Parish Rooms on the 2nd and 4th Wednesday each month at 8pm
 Contact 01925 919053

LOVING HEARTS & HANDS
 Knitting for charity at Lymm Methodist Church, 2nd and 4th Thursday each month.
 1.30pm - 3pm. Details: 01925 753298

LUNCH AT THE BROW
 Eagle Brow Methodist Church
 2nd Friday in the month
 Light lunches 12 noon till 1.30pm.
 All proceeds to The Y Project Room at The Inn

GARDENING CLUB
 Meet Third Wednesday of the month
 Lymm Baptist Church, Higher Lane. 7.30pm
 Visitors welcome. £2 includes tea and cake

LYMM FLORAL ART GROUP
 Lymm Village Hall
 Third Monday of the month (except August and December) at 7.30pm. Visitors most welcome. Contact: 07876 176501
lymmfloralart.org.uk

LYMM PHOTOGRAPHIC SOCIETY
 Every 2nd and 4th Wednesday (ex July & Aug), 7.30pm
 Spread Eagle pub, Eagle Brow.
 Details: www.lymmphotosoc.org.uk

LYMM WINE AND BEER CIRCLE
 3rd Wednesday of the month, 8pm
 The Spread Eagle Hotel
 Details: 01925 756444

LYMM CONCERT BAND
 Rehearsals every Thursday evening
 United Reformed Church, 8pm.
 Details: 01925 752934

LYMM WI
 Every second Wednesday, 2-4pm at Lymm Youth and Community Centre. Visitors welcome.

LYMM AND DISTRICT MIXED VOICE CHOIR
 Every Wednesday 7.30 Lymm Methodist Church. Contact 01925 601664.
cath@cstones.co.uk

PROBUS CLUB OF LYMM
 A small, friendly social club for retired people. Meets on second and fourth Tuesdays at 2:15pm.
 Details: www.LymmProbus.club

LYMM DINGLE PROBUS CLUB
 A friendly busy social club for retired men. Meets on alternate Thursday afternoons at Lymm Baptist Church.
 Details: www.lymmdingleprobus.club
 Club secretary 01925 759995

FRIENDS OF LYMM LIBRARY CRAFT GROUP
 Lymm Sanctuary Hub
 Fridays 1.30-3.00pm
 Details: 01925 754016

HEATLEY WI
 Meets the second Thursday of each month at Oughtrington Junior School, 7.30pm
 Visitors welcome. Details: 01925 752014

LYMM & THELWALL U3A
 Speaker meeting 3rd Thursday of the month (excluding August & December) at Thelwall Parish Hall 10.00am. Prospective members welcome.
www.u3asites.org.uk/lymm-thelwall/home
 Contact: enquiries@lymmthelwallu3a.org.uk

LYMM PARISH COUNCIL

Tuesday June 13th, 7:30pm
 See parish council website for details.



New Town Crier performs first Royal Proclamation!

LYMM'S new Town Crier AJ Powell performed his first Royal Proclamation on Lymm Cross to announce the Coronation of King Charles III.

AJ is the grandson of the village's former Town Crier Peter Powell who sadly died earlier this year.

AJ was joined by members of Lymm Parish Council and villagers at the event which helped kickstart

a number of activities and events taking place in the village to celebrate the Coronation weekend.

Check out the warrington Worldwide website for a video of AJ's Royal proclamation.

Pictures: Chris East



G P BROADSMITH & SON
 POOL FARM, LYMM
Bottled on the Farm from our Free Range Cows

**DELICIOUS MILK FROM OUR HAPPY COWS
 DELIVERED TO YOUR DOOR!**

Here at Pool Farm we take good care of our free-range dairy cows. They produce fresh, quality milk which is bottled in our own farm dairy and delivered to local doorsteps. We also stock a range of associated products such as eggs and potatoes, all sourced from local farms.

Call 757655 or email milk@broadsmith.com to discuss early morning deliveries to your doorstep and follow us on Facebook or Instagram at @broadsmiths where you can keep up to date with life on the farm!

G P BROADSMITH & SON
 POOL FARM, POOL LANE,
 STATHAM, LYMM, WA13 9BW
 TEL: 01925 757655
YOUR LOCAL DAIRY Est. 1932

ANDY CARTER MP

Member of Parliament for Warrington South

I hold regular constituency advice surgeries at my Warrington South office and around the area.

To make an appointment call **01925 231 267** or email **Andy.Carter.MP@parliament.uk**

Promoted by Stephen Taylor on behalf of Andy Carter MP of 1 Stafford Road, Warrington WA4 6RP. Funded through the allowances available to the Member of Parliament.

Coronation celebrations and crown fit for a King!

IT'S not every day that you get to celebrate your monarch's coronation and the team at Cheshire Grange in Lymm wanted to make it the build-up and not just the day special for the residents.

Staff and residents at the home put their heads together and came up with a plan for their celebrations fit for a King. There was lots of arts and crafts, making decorations for the home including, what seemed like miles of bunting which the homes Sewing Club helped to make. The whole home came together to celebrate our new King and talk about the new era the country is entering along with memories of the Queen's Coronation including an interview with Lymm Radio.

The residents put on their glad rags and danced like teenagers, exhausting the staff at their party before enjoying an indoor street party with treats prepared by the hospitality team.

One of the highlights of the celebrations was making a crown for a carer's son, Fred Hackett, to wear at his school's celebrations. Fred, a pupil at Woolston Community Primary School, visited Cheshire Grange to collect his crown made by the ladies on the Memory Lane Community.

Dawn Holsgrove-Smith General Manager at Cheshire Grange said: "We've all had such a brilliant time celebrating the Coronation, such a momentous occasion. Our staff and residents love the Royals and so they were all so excited to take part. It was so lovely to be able to invite our friends and family to come and join us for a proper celebration too."

Elizabeth, resident at Cheshire Grange said: "I can just about remember the Queen's Coronation, I was very small but I remember the street party we had then, although these days I'm not an ardent Royalist, it's still important to pay our respects to the new King and have a pride in your country, it is such an important occasion to mark."

Cheshire Grange is run by Barchester Healthcare, one of the UK's largest care providers, which is committed to delivering high-quality care across its care homes and hospitals. Cheshire Grange provides nursing care, residential care, dementia care and respite care.



ELB fireplaces Ltd Call us on: **01942 607250**
www.elbfireplaces.co.uk
 70 Twist Lane, Leigh, Lancashire WN7 4DP

**Established
40 YEARS**

Fire Surrounds, Stoves, Gas & Electric Fires

No need to change your carpet - made to measure fireplaces

Over 75 displays over 2 floors

Live wood burning stove on display

Is your conservatory too cold to use in Winter?
Why not install a stove?

YOUR LOCAL TAYLOR ROSE MW EXPERT

Operating out of 1-5 Palmyra Square South, Warrington, WA1 1BZ

Your trusted Warrington expert has transferred from FDR Law to Taylor Rose MW



We will provide you with clear concise advice:

Personal Services

- Clinical Negligence
- Crime & Extradition
- Dispute Resolution
- Employment & Benefits
- Family & Child
- Financial Matters
- Immigration
- Personal Injury
- Residential Property
- Wills & Probate

Commercial Services

- Alcohol & Entertainment Licensing
- Commercial Property
- Company & Commercial
- Costs
- Debt Recovery
- Directors Duties
- Dispute Resolution
- Employment Law
- Immigration
- Lender Services

Get in touch today to find out how we can help

Taylor Rose MW is a top 60 law firm with over 1,500 experts & offices nationwide.

Contact us on **01925 230000** or visit www.taylor-rose.co.uk





LYMM PARISH COUNCIL NEWSLETTER

The Annual Meeting of Lymm Parish Council took place at the beginning of May. This is the meeting where a new Chair and Deputy Chair are elected, and committee places are filled.

I am delighted to handover to Cllr Ann Johnstone and Cllr Julia Stansfield as the new Chair and Deputy. I wish them well for the coming council year.

The last year has been a very full one. An unprecedented number of Royal events were celebrated in the village supported enthusiastically by residents and Parish Council staff, though they did involve a lot of additional work.

Carols from The Cross drew large crowds again at Christmas making it a major public event. A great deal of work goes into ensuring that such an event is enjoyable, safe, and lawful. While such a gathering relies heavily on volunteers, the size and complexity requires professional support which the Parish Council was able to arrange.

Progress has been made on ensuring that the village hall remains available for a very wide range of community activities. Plans to replace the leaking roof, now beyond piecemeal repair, are well advanced. When the work takes place, the Hall will be unavailable for some time, which we hope to keep to a minimum.

There is a lot of demand for community spaces to hold charitable and private events in the village. Many of these are run by volunteer committees, which does cause difficulties when there are too few volunteers to manage a facility effectively. The Parish Council does not have the resources, or staff time, to step in every time a difficulty arises. However, we can provide some support and professional advice on a short-term basis when needed to ensure that community spaces are well used.

The Parish Council decided, after a great deal of deliberation, to extend the contract for our additional Police Community Support Officer for one more year. We are working closely with Cheshire Police to ensure that this substantial expenditure results in services tailored to the needs of the village that represent good value for money. This requires a recognition of the particular policing issues, both short term and long term, that are unique to Lymm.

Road safety, traffic, parking and speeding remain a high priority for residents. The Police and PCSOs can help a little with this. The Parish Council is actively measuring traffic flow and speeds in the village to inform possible improvements on our roads. We are also working with the Highways Department at Warrington. However, having been invited to participate in an Average Speed Camera trial, the Council declined the opportunity because it did not appear to offer good enough value for money in regulating speeds.

The Parish Council's environment team is doing excellent work, and sharing images on social media, of the before and after effects of their work.

The Parish Council has appointed an Administrative Assistant to help with the workload that our ambitious programme of work generates.

I have enjoyed my two years as Chair of the Parish Council and wish Ann and Julia well in their year in office. They, and the rest of the Parish Council as well as our Clerk, are always pleased to hear from residents. Usually these are concerns, which we do our best to deal with, but sometimes they are compliments which are also welcome.

Cllr Bob Barr

Contact information:

Clerk to the Council: Kerry Duffin - 07741 877870
clerk@lymmparishcouncil.gov.uk

Parish Council Website:

www.lymmparishcouncil.gov.uk

Lymm Parish Council 2023-24



Name: Cllr Ann Johnstone (Chair)
Address: 3 Lakeside Road, Lymm, WA13 0QE
Telephone: 01925 755554
Email: ajohnstone@lymmparishcouncil.gov.uk



Name: Cllr Julia Stansfield (Deputy Chair)
Address:
Telephone: 01925 758809 / 07928 848256
Email: jstansfield@lymmparishcouncil.gov.uk



Name: Cllr Bob Barr OBE
Address: 2A Danebank Road, Lymm WA13 9DH
Telephone: 01925 750910
Email: rbarr@lymmparishcouncil.gov.uk



Name: Cllr Chris East
Address: 7 Newfield Court, Lymm WA13 9QU
Telephone: 07743 489329
Email: ceast@lymmparishcouncil.gov.uk



Name: Cllr Graham Gowland
Address: 32 Wychwood Avenue, Lymm, WA13 0NE
Telephone: 01925 751599
Email: ggowland@lymmparishcouncil.gov.uk



Name: Cllr Ian Marks MBE
Address: 80a Whitbarrow Road, Lymm WA13 9BA
Telephone: 01925 753051
Email: imarks@lymmparishcouncil.gov.uk



Name: Cllr Tim Martland
Address:
Telephone: 07759 078412
Email: tmartland@lymmparishcouncil.gov.uk



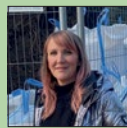
Name: Cllr Colin Oakley
Address:
Telephone: 01925 752624
Email: coakley@lymmprishcouncil.gov.uk



Name: Cllr Karen Rurlander
Address:
Telephone: 07717 855697
Email: krurlander@lymmparishcouncil.gov.uk



Name: Cllr Ben Selwood
Address: 44 The Crescent, Lymm WA13 0JY
Telephone: 01925 752624
Email: bselwood@lymmparishcouncil.gov.uk



Name: Cllr Sally Sharma
Address: 5 Baycliffe, Lymm WA13 0QF
Telephone: 07960 383148
Email: ssharma@lymmparishcouncil.gov.uk



Name: Cllr Stephen Towndrow
Address:
Telephone: 01925 757560
Email: stowndrow@lymmparishcouncil.gov.uk

Margaret King MBE receives award at Windsor Castle

AFTER being awarded an MBE in the 2023 New Year's Honours list, Margaret King from Lymm travelled to Windsor Castle recently to receive her MBE from the Prince of Wales.

After more than 50 years of working with children, Margaret was awarded the MBE for Services to Education and Community in Cheshire.

Margaret created the first Modern Educational Dance GCSE Curriculum in the UK in 1972. After moving to Lymm in the mid-80s Margaret set up Lymm Dance in 1987 and also assisted in local primary school musicals as a volunteer.

In 1991 she set up The Rosebank Centre, which had previously been a children's home on Pepper Street, as a nursery School with dance, movement and outdoor play as key elements in child development. This was expanded with a breakfast and after-school club for primary school children. This was followed in 2004 when she set up The Lakes Centre nursery in Orford to bring her skills and ethos to a wider group of children. This was a joint initiative with Warrington Borough Council and was one of the first National Neighbourhood Nurseries in the country with a focus on community support for parents and children. And in 2008 the nursery in Lymm was expanded further with a purpose built "Naturegarten" nursery within the grounds of Ravenbank Community Primary School. The Scandinavian log-cabin was one of

the first "forest schools" in the country and was based upon extensive use of outdoors and children learning in the natural environment. It enabled The Rosebank Centre to focus on childcare for babies and children up to 4 years old who then moved to Naturegarten for children between 4 and 10 years of age.

Throughout this time Margaret worked with Warrington Borough Council to provide excellence in the care, development and education of thousands of children in Lymm and Warrington. She was also active in other areas including Warrington Early Years Partnership, Warrington Independent Nursery Network, a Governor at Sandy Lane Nursery and a Voluntary Councillor for Childline

Manchester. All of the nurseries came under new ownership in 2021 when Margaret retired.

In 2018, Margaret set up "Crafty Crafters of Lymm" co-ordinating a group of volunteers who would sew drain bags and under-arm cushions for patients undergoing mastectomy surgery at Warrington and Halton hospitals. Her group of Crafty Crafters have provided over a thousand such items, all custom made in interesting fabric designs that patients can select from rather than use the standard plain NHS products.

Margaret said: "I am delighted to receive this honour. It was totally unexpected. Over the years I have simply done what I thought was the right thing to do and am proud to have been helped by so many excellent staff and colleagues along the way."



Less is More!

- Get paid quicker – Improving your cash flow
- Less time spent sorting old receipts – Free up countless hours each week.
- Less jargon and more proactive advice – Watch your business flourish.

Don't let these issues hold your business back.

To find out how we can remove your financial headaches call us:

01925 761600

or visit us at:

www.stylesandco.co.uk

styles and co
a xeinadin company



**E SMITH AND SON
PLANT CENTRE**
WWW.LYMMPLANTS.CO.UK

Where Gardeners Go!

THE NURSERY, BOOTHS LANE, LYMM, WA13 0PF
01925 752459

HANGING BASKETS

BEDDING AND PATIO PLANTS

SUMMER FLOWERING PERENNIALS

TOMATOES CUCUMBERS CHILLIES VEGETABLES

All Available Now

OPEN 7 DAYS: MONDAY TO SUNDAY 10AM - 4PM

Lymm May Queen blessed with gl

THE annual Lymm May Queen Festival was blessed with glorious sunshine as local community groups paraded through the village, followed by a festival on the May Queen field.

Lymm May Queen 2023 was Evie Dex and her Lady in Waiting was Ellie Wolstenholme, who are both pupils at Ravenbank Primary School.

Rose Queen 2023 was Iseabal Morrison from Cherry Tree Primary School and her Lady in Waiting was Harmony Seymour, a pupil at Oughtrington Primary School.

Town Crier AJ Powell started proceedings and led the parade through the village which was lined with local residents cheering on proceedings.

The Lymm Jubilee WI won the Best Adult Float this year. The judges had a good chuckle with their antics and the crowd loved it!

Pictures: John Hopkins



lorious sunshine



LYMM
Historic Transport
DAY

ADULT £6
 CHILD £3
 FAMILY £15

ALL PROFITS GO TO LOCAL CHARITIES

STEAM • TRAINS • BIKES
 BOATS • CARS

J.W. LEES
 Lymm Festival

★ **25TH JUNE 2023** ★
10AM - 5PM
 MAY QUEEN FIELD & VENUES ACROSS LYMM
 FOR MORE INFORMATION & TICKETS VISIT:
WWW.LYMMTRANSPORT.ORG.UK

Power Generation
 Kids Planet
 nc
 BACK TO THE GARDEN
 CHILDCARE

HUPERADE LTD

YOUR TRUSTED SOIL PROVIDER



PROFESSIONAL & AFFORDABLE SERVICE

Our soil can transform your outside space into the garden you deserve.

SOIL SPECIALISTS DELIVERING

EXTRA FINE & GENERAL PURPOSE SOIL

WOODCHIP/MANURE – Bagged or loose tipped

OR A MIX OF MANURE & SOIL



Call: 0161 980 5350 for a quote
 Or visit: www.huperade.co.uk
 Email: gary.cash@huperade.co.uk



@huperadesoil



Funding, awards and new jobs for Lymm charity

LYMM Sanctuary Hub certainly has a “spring” in its step after securing funding from the National Lottery Community Fund. After five years of hard work by the team and reliance on volunteers, small grants and donations, the Hub is now secure and able to extend their support of Lymm locals.

The exciting news comes hot on the heels of other achievements, including winning Community Initiative at Warrington Business Awards 2022 and being a finalist for ‘Charity with under 50 volunteers’ at Cheshire Community ReAwards 2023.

The grant will be used to fulfil the Hub’s charitable objectives, namely to promote mental and physical wellbeing, support isolated and vulnerable local people, and tackle loneliness and household financial difficulties - all of which have been exacerbated by the pandemic and the current cost-of-living crisis.

The Hub will:

- raise awareness of its role, its projects and their benefits to the community;
- deliver projects to support more people in the local community;
- recruit and train more volunteers;
- create employment opportunities; and
- support other local projects, group activities, community and businesses organisations.

A restructure has already taken place and recruitment is underway to fill five new posts, including a Volunteer Coordinator, Projects

Administrator and Operations Manager.

The Hub has begun two new projects following the ‘Community Matters’ public engagement events in September 2022. LymmPaC (Lymm Parents and Carers), a support group for families of children who have additional needs, meets Wednesday mornings at the Hub; and Lymm Companions is a pilot project offering friendship to anyone who is isolated, elderly, new to the village or living alone.

2023 has seen the growth of existing projects too, including the Memory Café, Singing for the Brain, Digital Café and Counselling Service. Add to this the start of work on Lymm Community Garden, incorporating the Lymm Tree (featured wearing its Spring and Coronation sleeves) and 2023 seems destined to see the Hub deliver great services and facilities in Lymm.

For further contact details, the ‘Community Matters’ e-newsletter, and project and volunteering news, view the QR code and link on the front cover.



Community ReAwards (Joyce Murdoch, Simon Fawcett, Kirsty James, and Jeannie-France-Hayhurst High Sheriff of Cheshire – Credit: Cheshire Life); Singing for the Brain presentation from Barchester Charitable Foundation (Helen Elliott, Joyce Murdoch and Sarah Nolan); Warrington Business Award; The Lymm Tree.

Lymm Festival

SAVE THE DATE

CELEBRATING 25 YEARS

LYMM FESTIVAL

22ND JUNE - 2ND JULY 2023

#LymmFest23

www.lymmfestival.org.uk

Business storage plan for Green Belt nursery site



A RETROSPECTIVE planning application has been submitted to Warrington Borough Council for a change of use of a former Green Belt nursery site for business storage.

The proposal involves the former Broomeedge Nursery off Burford Lane, Lymm where currently there are a number of glasshouses and caravans.

Historically, the site was used as a nursery from 1936-37 but after its closure it continued to be used for storage for 20 years.

In 2001 an application to use the site for storage of residential caravans was approved but the following year plans to store towing caravans was refused. In 2014, a plan to build eight detached dwellings and create a wildflower meadow was refused.

The new application seeks retrospectively permission to replace some of the existing

glasshouses with metal-clad storage units, replace an existing brick/steel building with four storage units, and increase the area used for caravan storage.

The applicants say the proposals have been carefully designed to respect the style and character of the rural area. There would be no impact on existing landscaping which would remain as existing and the proposals would not require any variation to the existing vehicle access arrangements.

The proposals for the regularisation of the historical change of use of the site for commercial storage purposes would have no greater impact on the openness of the Green Belt than the existing situation, the applicant maintains.

Borough council planning officers are now considering the proposals.



**Access
to Higher
Education**

Warrington's leading
provider of adult education.

Study now, pay later!*

University has never been more accessible with our range of Access to Higher Education (HE) courses on offer at Warrington & Vale Royal College.

Our Access to HE courses are aimed at those adults who do not have the formal qualifications for higher education or haven't got the level 3 qualifications to change career. Our expert tutors and exceptional resources will prepare you to move on to the next stage of your career path.

Access to HE - Health & Social Care

Access to HE - Nursing & Midwifery

Access to HE - Paramedic Science **NEW!**

Access to HE - Science

Access to HE - Social Sciences

Access to HE - Social Work

wvr.ac.uk/access

01925 494 400

*Terms & conditions apply



**Health
& Social Care
Academy**

Meet our students:

**Future
MIDWIFE**

Natasha Wheatley
Access to HE:
Nursing & Midwifery



**Future
SOCIAL
WORKER**

Cerrie Loveseed
Access to HE: Social Work




**Future
NURSE**

Terence Miller
Access to HE:
Nursing & Midwifery



Warrington & Vale Royal College

FREE ENTRY - Everyone welcome!

 **Warrington & Vale Royal College**

COMMUNITY FUN DAY

Saturday 8th July, 11.00am - 2.00pm

Sponsored by:  **EQUANS**
EMPOWERING TRANSITIONS



**Fun activities
available for the
whole family!**

- Bouncy Castles**
- Children's Fairground Ride**
- Dog Show**
- Face Painting**
- Elsa from Frozen**
- Stalls & Games**
- Tea, Coffee & Cakes**
- Hot Food**
- Music**

Try your hand at:

- Bricklaying,**
- Jewellery Making, Floristry,**
- Hairdressing, Plumbing,**
- Mechanics, Graphic Design**
- + much more!**

All proceeds
to go to

**St. Rocco's
Hospice**

EXCHANGE YOUR GOLD AND SILVER FOR INSTANT CASH



All items of jewellery accepted

Did you know...?

We accept silver jewellery, cutlery, tea sets, spoons, cigarette cases, candlesticks, trophies, trays, medals, coins and pocket watches.

ROLEX WATCHES WANTED!
ANY CONDITION

Open: Tuesday-Saturday: 10am - 5.30pm

1 London Road, Stockton Heath
(First floor entrance on Fairfield Road)

07544 486 621



GOLD & SILVER
BULLION DEALER

Need IT Support at Home?

- Skilled and Friendly Technicians
- PC and Laptop Support
- Home Visit or Remote Dial-in
- Antivirus/Malware Check
- Unlimited Support Time
- Equipment Supplied: Laptops, PCs, Printers & Bespoke Builds



Call our Team: 01925 251143

sales@aspire-computers.com | www.aspire-computers.com

The day a horse-drawn cart went over Thelwall Viaduct!



BUILT and designed to take up to 79,000 vehicles per day when it officially opened 60 years ago, a horse-drawn cart driven by a local teenager was actually the first vehicle to travel over the completed Thelwall Viaduct.

Retired hotelier Neville Davies was given the honour of taking the viaduct's designer Sir James Drake and Minister for Transport, the Honourable Ernest Marples over the viaduct to the Woolston Junction, which is the only time someone has legally taken a horse over the Viaduct.

Neville's father Oswald Davies was Joint Managing Director of Leonard Fairclough & Son, who built the first Thelwall Viaduct.

For several years, engineers and Government Officials had visited America to see their motorway networks and establish if this was possible for the UK. One issue that changed when the UK started to build motorways was that the Americans had what was called a 'soft shoulder' which was cheaper, but did not have a tarmac topping. This was not adopted by the UK where all motorways were built with a proper, serviceable surface. Work started on the Thelwall Viaduct in September 1959 and was completed in 1963.

With the 60th anniversary of the viaduct opening approaching Neville recalled when he was given the honour of driving the horse and cart.

"My dad came home from work one day to say that he had a meeting with Sir James Drake, from Lancashire County Council, who designed the Viaduct and the Right Honourable Ernest Marples MP, who was the Minister of Transport.

"They thought it would be a novel idea if, on the day of the opening they travelled over the Viaduct in a horse-drawn vehicle. I was tasked with the job of finding a horse and cart to fulfil this. I found out that Mr Smart, who was a builder from Appleton had several of these and so Dad and I went to see him. He kindly agreed to loan us one of his horses

called Jim and a vehicle.

"As I had always ridden and knew how to handle and drive a horse-drawn vehicle, I was 'volunteered' to do the honours. I collected the horse and cart from Mr Smart the day before the opening and stabled it overnight. I was up at 4am on the day of the opening to feed and groom the horse.

"I left home at 5.30am to meet the dignitaries at Junction 20 of the M6 at the Lymm Interchange. This unearthly hour was decided due to the large number of visitors expected at 10 am for the Official Opening and subsequent walk over the Viaduct which was expected to be the last time this would ever happen.

"Sir James Drake and the Honourable Ernest Marples got in the cart with me and we travelled over to the Woolston Junction, which is the only time someone has legally taken a horse over the Viaduct.

"The passengers got off and on the return to junction 20, they played golf, which they had seen on frequent visits to America when they went to study their Motorway Systems and this was the usual activity when opening a new Motorway.

"I followed with 'Jim', my passengers got back in and we then travelled to the Lymm Hotel for breakfast.

"On arriving at the Lymm Hotel, I thought I was in line for breakfast also, but was thanked as everyone went in for their own breakfasts. This left me to take 'Jim' back to Appleton, put him in his field, store the cart and then walk home back to Lymm!

"It is something I was proud of, particularly as a seventeen-year-old," concluded Neville.

In 1992 work started on a second viaduct costing £52.5m and built by Tarmac Construction.



GAROLLA ★ PREMIUM
Increased Security • Double Insulation
One-Touch Close

PRICED EXAMPLE £895
COMPACT • UP TO 2.4M

FREE FITTING
PAYMENT ON INSTALLATION

PRICED EXAMPLE £1,990
PREMIUM • 3.4M • ANTHRACITE

PRICED EXAMPLE £2,740
PREMIUM • 5.1M • BLACK

Improve, Don't Move! Maximise the value of your home.

- SPACE-SAVING - MAXIMISE YOUR GARAGE HEADROOM
- SECURITY-ENABLED AUTO-LOCKING SYSTEM
- CHOICE OF 21 COLOURS TO MATCH YOUR HOME
- REMOVAL AND RECYCLING OF YOUR OLD DOOR
- DEDICATED AFTER-CARE TEAM

GAROLLA 01925 205 009



LINES OPEN 7 DAYS A WEEK

www.garolla.co.uk



New board of trustees elected at Oughtrington Community Centre



New Chair Derek Ridpath and his volunteer sister Phyllis with their team at the luncheon club

A NEW board of Trustees has now been elected at Oughtrington Community Centre following the recent fall out between management and a local luncheon club.

At The Oughtrington Community Centre Annual General Meeting (AGM) held on Wednesday, May 10, in a packed hall, a new board of trustees of the Community Centre was elected by the membership.

The Trustees elected by the membership include Derek Ridpath, Nick Storer, Jenna Brown, Lucie Kerley, Leah Welsh, Heather Ray, Lucie Kerley and Andy Openshaw.

The new trustees will now meet and identify and prioritise the next steps for Oughtrington Community Centre, to support existing user groups and centre bookings, and to encourage future use of the Centre. The new Trustees would like to extend their thanks to the outgoing Trustees, the users of Oughtrington Community Centre and all the supporters of the Centre. The new Trustees will in due course communicate to all members and plan for a consultation on the future of the centre and how it should meet the needs of the community in both the near future and long term.

The new Trustees are extremely grateful for the continued support of the residents of both Oughtrington and the wider Lymm area.

The newly appointed Chair of the Board of Trustees, Derek, commented: "It was such a pleasure to see so many members of the local community packed into the hall for the AGM demonstrating a renewed interest in their own local facility. I would like to thank them for putting their trust in me to Chair the new Board for the next

12 months. I will do my very best to repay that trust.

"I would also thank them for their excellent choices in filling the other officer/trustee positions forming a new dynamic Board of Trustees to ensure the Community Centre moves forward in a positive way.

"There is a lot to be done. I am writing this just 24 hours after the AGM, the first Board Meeting has been held, I lost count by midday of the number of times my phone 'pinged' with everybody fulfilling their new roles. The work has started, and I am sure it will get finished."

For further information, please contact Lymm Parish Council nominated Trustee, Kerry Duffin, on 07741 877870 or clerk@lympparishcouncil.gov.uk

Meanwhile after nearly three months of uncertainty the Oughtrington Luncheon Club based at the centre opened its doors again recently, much to the relief of those attending and the dedicated team of volunteers.

It had controversially closed following a fall-out between the previous Trustees and Volunteers that resulted in the locks being changed on the building last January after nearly four decades of providing hot meals for elderly, vulnerable and isolated people.

As a result, the Luncheon Club, formed by local resident Joyce Penlington more than 38 years ago had to close. Thankfully it is now back up and running.



Your pet questions answered

By Dr Diane Wilshaw
Lymm Veterinary Surgery

Q: I have heard that my cat will legally have to be microchipped, is this true?

A: Yes, from 10th June 2024, it will become a legal requirement for all felines over the age of 20 weeks to be microchipped. This also applies to cats that don't go outside, as they may find a way out! It's a good idea to get your cat microchipped before this date, so you can beat the rush, and increase the chances of being reunited with your fur baby, should they go missing.

Q: My dog has suddenly started to itch and has a bald patch of very sensitive looking skin! What should I do?

A: Your dog needs to see a vet so they can find out what is causing them to itch. It could be down to an allergy to something in their environment, food, or even fleas. From there, your vet will be able to advise on the best treatment for your dog and get them on the road to recovery.

Q: What should I be looking for in an insurance policy for my pet?

A: Insurance can help cover the cost of treatment for your pet, should they become poorly, or sustain an injury. It is important to shop about and find the best policy for your circumstances, for example will the insurance cover the cost of long-term treatments if your pet should your pet need them? Or can you afford the policy excess if you were to need to make a claim? Remember to check every detail of a policy before committing and make sure it is the best fit for you and your pet.



Q: I have heard that it is better to feed rabbits on hay rather than rabbit food. Is this true?

A: Yes, hay should form 90% of a rabbit's diet. Hay helps to keep your rabbit's teeth worn down to the correct length. You might find that with commercial rabbit food that your bunny will pick out the tastiest bits and could miss out on the essential nutrients and vitamins they need.

Q: Our 14-year-old Labrador is coughing a lot, sometimes he brings up mucus, and his breathing can appear laboured – what is this and what should I do?

A: The symptoms you describe can indicate several potential conditions, especially in an older dog. You should have him checked over by a vet so that he can be diagnosed and prescribed medication to help alleviate some of his symptoms.

Save money with our Pet Health Plan

Essential vaccinations, health checks and flea and worm treatment are all covered with our Pet Health Plan

Plans from £9.99 per month



CALL: 01925 752721

10 Booths Hill Road, Lymm, Cheshire WA13 0DL

@LymmVets

@LymmVets



Lymm Runners enjoy record breaking run at Manchester Marathon

LYMM Runners had a record turnout of runners at the recent Manchester Marathon.

This is the second largest marathon in the UK and with the highest ever number of runners taking part, some 28,000, it is becoming a serious rival to London.

Naturally, Lymm Runners stepped up to the plate to join in with a record turnout of thirty individuals taking part, including fifteen women club members, plus four runners who took part as a relay team.

They all trained very hard and the outstanding results spoke for themselves, with new club records being set by four members, while twelve runners achieved Personal Bests. Finally, to top it all, the relay team won 4th place.

Special mention must go to Phil

Rowen and Georgina Walker who were the first male and female Lymm Runners home, both setting new club records with times of 2 hours 58 minutes and 3 hours 22 minutes respectively. Lymm Runners Katy O'Connor and Jennifer Todd-Power also set new club records for their categories.

And many of the club who didn't run got involved by volunteering to man the water station at Mile 4, an activity rumoured to be almost as much fun as actually competing.

Next year's marathon will be on April 14 2024 and it's likely that the enthusiasm generated by this one will ensure an even bigger turnout.



Green fingers in Lymm for Global Intergenerational Week

WITH the McGoff Group's stunning multi-age development now fully complete in Lymm, three generations came together to mark the start of Global Intergenerational Week recently, with the planting of a new communal garden.

Children from Back to the Garden's natural day nursery joined residents from Statham

Manor Care Centre and the over 55s retirement apartments at Minerva Place to create a beautiful new shared allotment-style space which was planted with an assortment of herbs, vegetables and flowering shrubs.

Positioned in the garden at Statham Manor, it will be nurtured by all and added to over time,

providing many opportunities for the different age groups to come together and share quality time outdoors in the fresh air.

Bill Hall and Joyce Hamilton, both age 87, from Statham Manor joined Aubrey Raymond and his daughter Anne from Minerva Place plus pre-schoolers Teddy, age 3, Harriet, age 4 and Amelia, age 4, from Back to the Garden Childcare for the project.

Young and old were very happy to get stuck in, getting their fingers dirty prepping the planters, adding compost, burying the seeds and sharing memories, stories, hints and tips about gardening.

Home manager at Statham Manor, Farai Hanyane, commented: "At Statham Manor, we encourage all of our residents to continue with their passions and we have some avid gardeners who are always looking for new projects. The allotment garden gives them the perfect opportunity to carry on with a leisure activity that they love

and to pass their knowledge along to the younger generations."

Nursery manager, Alison O'Connor-Limb added: "It was the perfect time for us to get involved with the intergenerational garden project as the children have been exploring the meaning of Springtime, new life and changes in nature. This provided a great opportunity for them to get hands-on in the garden with a real-life project that they can re-visit and watch develop. We have planted some herbs which we are excited to share for use in the kitchens when they have grown."

Located on the corner of Whitbarrow Road and Statham Avenue in the centre of Lymm, the McGoff Group's innovative intergenerational development is now fully complete and comprises a state-of-the-art care centre, stunning retirement apartments and a natural children's day nursery. For further information, please visit www.mcgoffgroup.com

Obituary

Margaret Woodward

THE funeral has taken place of Margaret Woodward of Pepper Street, Lymm.

Margaret passed away peacefully in hospital after a short illness.

She is survived by her two daughters, Janet and Susan, and son Kevin along with

many grandchildren and great grandchildren.

Margaret was very involved with the Royal British Legion, Lymm May Queen and other charities.

She is now with her beloved Len. Funeral arrangements by John Burrows and Sons of Lymm.



Established 1878

John Burrows & Sons
Fourth Generation Independent Family
Funeral Directors

Friendly & Professional Service
Day or Night ~ J. Tandy

The Old Smithy, Mill Lane, Lymm,
WA13 9SE Tel: (01925) 752501

Golden Charter
Funeral Plans

www.johnburrowsandsons.co.uk

CLASSIFIED

Call 01925 631592 to advertise

ACCOUNTANCY & BOOKKEEPING

BOOKKEEPER/ACCOUNTANT. Licensed for maintaining financial records, VAT Returns, Payroll Service, Management Accounts. SAGE Software Consultancy. **Contact: 07815 617914.** (5*)

CARPET CLEANING

A1 STAINBUSTERS. A Warrington company cleaning carpets, hard floors, Upholstery (Leather + fabric) and curtains in situ. FREE quotes for domestic and commercial. Approved carpet cleaners for Hancock and Woods for over 10 years. **Call John on 07765 314080** (16/23)

SIMPLY THE BEST CARPET CLEAN YOU will ever have. Cleaners UK Ltd. Est over 35yrs. Have your carpets & sofas beautifully deep cleaned leaving them fresh smelling & colour restored. Latest & best methods. Dry/steam. Leather cleaning, oriental rugs specialist. Professional, reliable & affordable. **For more info call Neil Riley on 01925 264989 / 07831 336060 www.cleaners-uk.net** (14/23)

CAR SALES

PARKVIEW CAR SALES

We buy and sell QUALITY CARS
Best price paid
Telephone Peter on 01925 575737 / 07957 545479
 23 Padgate Lane
 Padgate, Warrington
 Cheshire, WA1 3RS (5*)

CHILD CARE

OFSTED REGISTERED CHILDMINDER
 Lives close to Ravenbank School. Full time or Part time placements available. Pick up and drop off from Ravenbank School or Rosebank Nursery. From ages 0-12 years. **For more information contact Carole on 07731 089656 or leave a message on 01925 755108** (14/23)

CLEANING SERVICES

arleys angels

- Spring Clean Specialists
- Presenting your home for sale
- Moving house
- After building work cleans

01925 266834
... because you're worth it! (5*)

CLEANING SERVICES

SIMPLY THE BEST CARPET CLEAN YOU will ever have. Cleaners UK Ltd. Est over 35yrs. Have your carpets & sofas beautifully deep cleaned leaving them fresh smelling & colour restored. Latest & best methods. Dry/steam. Leather cleaning, oriental rugs specialist. Professional, reliable & affordable. **For more info call Neil Riley on 01925 264989 / 07831 336060 www.cleaners-uk.net** (14/23)

COUNSELLING

SAFE SPACE COUNSELLING. Counsellor/psychotherapist based in Lymm. Specialises in stress, anxiety, low self-esteem, trauma and relationship issues for adult clients. Daytime and evening slots available, offering both online and face-to-face sessions. **Contact Amy on 07852 686862 or visit www.safe-space-counselling.com** (18/24)

ELECTRICAL CONTRACTOR

TRUST PROPERTY ELECTRICAL SERVICES. NICEIC Part P Approved Contractor. All Electrical work undertaken. Inspection & Testing & PAT Testing. All work certified & guaranteed. **Call Tim on 07754409906 or 01925 601055** (15/22)

GARDENING SERVICES

- All aspects of tree surgery
- Stump grinding
- Waste removal
- Locally based
- Free quotation

Beechwood Industries
 www.beechwoodindustries.co.uk
01925 860544 (5*)

PHOTOGRAPHY

FAMILY & PET PORTRAIT PHOTOGRAPHY
 Lymm based Andrew Collier Photography specialises in family and pet portrait photography using Lymm locations as a backdrop. Personal service with beautifully made frames and albums. **Call Andrew on 01925 471091 or visit www.andrewcollierphotography.co.uk** (14/22)

PAYROLL

WHY TRY TO BE A PAYE EXPERT?
 Watkinson Black can provide a cost effective payroll service, releasing you to concentrate on your business. **For further details please phone: 01925 413210 or e-mail: info@warringtonaccountants.co.uk** (5*)

RE-UPHOLSTERY

Orchard Soft Furnishings

RE-UPHOLSTERY
 CURTAINS • BLINDS
 FREE MEASURING & FITTING
 TEL:(01925) 756388
 www.orchardsoftfurnishings.co.uk (5*)

TAXI / PRIVATE HIRE

Horn's

Airport Transfer & Taxi Specialists
CALL MARTYN: 01925 751761
MOBILE: 07881 786250 (13/24)

TYRES

EI/ERGREEN Centre of Excellence

Express
 Mobile Tyres

Local Family Business. Est. 1997
01925 810000
 www.expresstyres.co.uk
Order Online Today!
Branded & Budget Tyres
 Cars, Vans, 4x4's, Caravans
 Light Commercial
 & Performance Vehicles
The tyre service that comes to you at home or your place of work
No Call Out Charge!
BRIDGESTONE MICHELIN
GOODYEAR Continental (5*)

To advertise in the classified section from as little as £15+vat
Call us now on 01925 631592

twentyfour seven design & print ltd

We supply and fit all types of signage: self adhesive graphics, glass, metal, wood, perspex, foamex plastic.
 Call or email for a free site visit.

01925240247 **info@247print.net** **www.247print.net**

Obituary Notices

While Obituary notices are published free of charge, due to pressures on space, we can never guarantee they will be used and there can also be a delay of several months.

If you would like to guarantee a notice to appear in the next available issue, these can be purchased for £75 plus VAT which helps towards the running costs of your free community magazine.

To place an obituary notice or any other public/family notice please email info@lymmlife.co.uk

Your notice will appear the same size as this advertisement.

The North West's leading supplier of concrete

www.barrowmixconcrete.com

BARROW - MIX

1984-2023
39TH YEAR
ANNIVERSARY



FREE SITE SURVEY

6 DAY SERVICE

All areas covered

Free barrowing service

Only pay for what you lay

From half a cubic metre upwards

Levelling/laying service if required

(minimum charge)

We can supply

C25, C30, C35 Fibre Reinforced



VISA

MasterCard

Maestro

SOLO

Call NOW for a FREE quotation

01565 734111 or 01942 722629