

Lymm Life Magazine

ISSUE 285 | APRIL 2023

DELIVERED FREE TO 5000 HOMES



urban

BUILDING PROJECTS LTD

Extension & Building Renovation Specialists

Tel: 01925 730888

www.urbanbuildingprojects.co.uk



Picture: Pippa Thomas

Following in grandad's footsteps

Page 10



CJ ROUND LANDSCAPES

Landscaping - Design - Patios
Decking - Fencing - Walls

01925 752468

www.cjroundlandscapes.co.uk
facebook.com/cjroundlandscapes



LYMM PARISH COUNCIL

Approved by Lymm Parish Council as the official magazine for Lymm

Maskell



Josephson

THE OPTOMETRISTS
Independent eye-care for all the family since 1983

0161 941 6517

www.maskelloptometrists.com

Regular news updates at www.warrington-worldwide.co.uk

Editor's Comment



Editor
Gary Skentelbery

Production
James Bryan

Advertising
James Balme
Telephone
01925 631592

Editorial
01925 623633

Email
info@lymmlife.co.uk

Websites
www.lymmlife.co.uk
www.culchethlife.com
www.frodshamlife.co.uk
www.warrington-
worldwide.co.uk
www.warrington.tv

Address
New Media Centre
Old Road Warrington
WA4 1AT

*Lymm Life is published
monthly by Orbit News Ltd.*

*The contents of this magazine
are fully protected by copyright
and nothing may be reprinted
or reproduced without prior
permission of the publishers.*

*The publishers are not liable for
any statement made or opinion
expressed by third parties in this
publication.*

Printed by TwentyFourSeven

They say a week is a long time in politics – well five weeks is an awful long time for local pensioners to be locked out of the Oughtrington Luncheon Club.

At time of writing, that is the length of time members of the Oughtrington Luncheon Club have been locked out of their premises following a fall-out between Trustees and volunteers.

I say "their premises" because the community centre is there to benefit the whole community – and nobody should be locked out of a community building unless they have broken the law.

While I have been actively reporting on the sorry state of affairs, I have done my best not to take sides and given both sides equal opportunity to state their case – I have tried to mediate and even offered to cover the cost of meals until the dispute can be resolved.

The ones who are suffering from the decision to lock the luncheon club out are the elderly members who have been left upset and confused by the decision.

Below is my last communication to the Chair of Trustees Paul Gibson in a bid to get the premises re-opened for the luncheon club. If anyone can explain to me what is unreasonable about my request I would love to hear from you?

To the Trustees – PLEASE re-open this building to the luncheon club ASAP while a conclusion is reached to this sorry state of affairs.

"Dear Paul

Many thanks for taking the time to drop off the folder of correspondence between yourself and Derek and the luncheon club at my office.

It is unfortunate I was unaware of your visit and not in at the time.

I have taken the time to read through every bit of documentation and still cannot see any valid reason why you cannot allow the Luncheon Club to continue serving hot meals to the pensioners in the local community while this issue is resolved.

The pensioners are now four weeks without their luncheon club and with solicitors and the parish council now involved it isn't likely to get resolved any time soon unless everyone can put their differences aside and put those who are most vulnerable in our community first.

I don't want to take sides in this issue – I just want it resolved.

Surely you can agree a weekly fee for the Luncheon Club to use the premises on a month-by-month basis until the issue is resolved to everyone's satisfaction.

They clearly have the funds and looking in from the outside (with all the information I have got) it appears unfair to expect the luncheon club volunteers to just hand over their funds and walk away from something they are clearly passionate about.

Unless you can provide a valid

reason could you please confirm a figure and allow the luncheon club to resume ASAP?

The sorry saga is causing great upset in the community and whoever is in the wrong or the right – the Trustees of the Community Centre are not coming across in a good light and from the information you have provided it would appear it is starting to have a negative impact on the facility and users – which is something no one wants to see.

I would love nothing better than us all to sit down at the luncheon club and celebrate new beginnings before this gets dragged out with solicitors, the parish council and the Charity Commission.

Let's put a smile back on the faces of the Luncheon Club members ASAP
Best wishes
Gary"

N & J STANHOPE

Coal and Log Supplies

Best Quality Coal
Smokeless Fuel
Logs Supplied in Bags and Bulk
Caravan Storage
Open 6 Days. Closed Sunday

Broomedge Farm
Burford Lane, Lymm WA13 0SE

Tel: 752830
Mobile: 07979 785 421

WINNERS
Caring UK Awards 2021
Excellence and Innovation
in Dementia Care
RUNNERS UP
NAPA 2021 Arts in Care



OPEN for
New Admissions
Virtual & In-house tours
available

Award-winning dementia friendly Care Home

Exceptional care & facilities – including sensory garden & full activities programme



Dementia Care • Residential Care • Respite

www.keatehouse.com

Call: 01925 752091 Email: enquiries@keatehouse.com

9 Brookfield Road, Lymm, Cheshire WA13 0QL



NAPA Award Winners 2017, 2018
Plus 2020 – Best Activity Team



Heritage centre provides education in its broadest sense

One important aspect of the work of Lymm Heritage Centre is education in its broadest sense.

As well as learning about the history of the village the team aim to start to give children a sense of belonging and respect for the place where they live.

Most of the sessions are with primary children on a wide range of topics from World War One to shopping history but a recent visit brought even younger children in to explore. The Centre received great feedback from a Rainbow Day Nursery visit and can't wait to welcome them back. Here is what they said.

'Pre-School children from Rainbow Day Nursery in Lymm recently made two fantastic visits to The Heritage Centre. They learnt all about the history of Lymm – with so many hands on activities linked to the canal, shops, manufacturers, clothing and toys from the past. Favourite things to do on the day were 'sitting in the stocks', dressing up and learning all about the famous Lymm dinosaur footprint. The volunteers at The Heritage Centre were amazing. We would recommend that everyone in Lymm support the Centre, and get a true feel of belonging to such a wonderful place' said owner Alice

Apel. 'The displays and fascinating photographs help to build up a picture of what life was really like over the ages. There are also many interesting and novel gifts to buy.'

The Heritage Centre always welcomes new volunteers in a wide range of roles. You can discover more at www.lymmhc.co.uk/theteam, call 07540 096282 or drop in for a chat. The Centre is open 12-4 Thursday to Sunday.



Heritage Centre volunteer Jacky Carroll with two of the young visitors.

Professional tree services

Free Quote

- Domestic
- Commercial
- Site Clearance
- Vegetation management
- Stump grinding
- Re-planting
- £10m public liability insurance



Beechwood Industries
www.beechwoodindustries.co.uk

For more information, please call us on
01925 860544

HELLO SPRING!



PRIMROSE HILL
N U R S E R I E S
Est. 1935

OPEN TO THE PUBLIC AND TRADE: MON-SAT 8.30am-5pm. SUN 10am-4pm.
WARRINGTON ROAD, HIGH LEGH, KNUTSFORD, CHESHIRE WA16 0SQ. 01925 752635

What's On in conjunction with Lymm Parish Council



LYMM PARISH COUNCIL
Tuesday April 11th, 7:30pm
Lymm Parish Hall
Check www.lymmparishcouncil.gov.uk for details.

LYMM THURSDAY EVENING BRIDGE CLUB
Lymm Village Hall every Thursday 7pm
Details: 07708 172015

MAPLE LODGE ART GROUP
Meet each Wednesday 9.30am - 11.30pm
Oughtrington Community Centre, Lymm
Details: 01925 755926

ROTARY CLUB OF LYMM
Meets at Warburtons Parish Rooms on the 2nd and 4th Wednesday each month at 8pm
Contact 01925 919053

LOVING HEARTS & HANDS
Knitting for charity at Lymm Methodist Church, 2nd and 4th Thursday each month.
1.30pm - 3pm. Details: 01925 753298

LUNCH AT THE BROW
Eagle Brow Methodist Church
2nd Friday in the month
Visit lunches 12 noon till 1.30pm.
All proceeds to The Y Project Room at The Inn

GARDENING CLUB
Meet Third Wednesday of the month
Lymm Baptist Church, Higher Lane. 7.30pm
Visitors welcome. £2 includes tea and cake

LYMM FLORAL ART GROUP
Lymm Village Hall
Third Monday of the month (except August and December) at 7.30pm. Visitors most welcome. Contact: 07876 176501
lymmfloralart.org.uk

LYMM PHOTOGRAPHIC SOCIETY
Every 2nd and 4th Wednesday
(ex July & Aug), 7.30pm
Spread Eagle pub, Eagle Brow.
Details: www.lymmphotosoc.org.uk

LYMM WINE AND BEER CIRCLE
3rd Wednesday of the month, 8pm
The Spread Eagle Hotel
Details: 01925 756444

LYMM CONCERT BAND
Rehearsals every Thursday evening
United Reformed Church, 8pm.
Details: 01925 752934

LYMM WI
Every second Wednesday, 2-4pm at Lymm Youth and Community Centre. Visitors welcome.

LYMM BOOK CLUB
Second Thursday of the month 7.30pm,
Spread Eagle, Eagle Brow. Details 01925 752371

LYMM AND DISTRICT MIXED VOICE CHOIR
Every Wednesday 7.30 Lymm Methodist Church. Contact 01925 601664.
cath@cstones.co.uk

PROBUS CLUB OF LYMM
A small, friendly social club for retired people. Meets on second and fourth Tuesdays at 2:15pm.
Details: www.LymmProbus.club

LYMM DINGLE PROBUS CLUB
A friendly busy social club for retired men. Meets on alternate Thursday afternoons at Lymm Baptist Church.
Details: www.lymmdingleprobus.club
Club secretary 01925 759995

FRIENDS OF LYMM LIBRARY CRAFT GROUP
Lymm Sanctuary Hub
Fridays 1.30-3.00pm
Details: 01925 754016

HEATLEY WI
Meets the second Thursday of each month at Oughtrington Junior School, 7.30pm
Visitors welcome. Details: 01925 752014

LYMM & THELWALL U3A
Speaker meeting 3rd Thursday of the month (excluding August & December) at Thelwall Parish Hall 10.00am. Prospective members welcome.
www.u3asites.org.uk/lymm-thelwall/home
Contact: enquiries@lymmthelwallu3a.org.uk



LYMM PARISH COUNCIL

Tuesday April 11th, 7:30pm
See parish council website for details.

Care home residents share stories to celebrate World Book Day



TO celebrate World Book Day, children from Back to the Garden Childcare at Lymm visited residents at neighbouring Statham Manor Care Centre, for an inter-generational afternoon of fun and storytelling.

Dressed as characters from their favourite books, including Supergirl, the Gruffalo and Mog the Cat, the group of eight children were accompanied by the nursery manager and practitioners, also dressed up, bringing with them a selection of books to read with the residents.

Statham Manor residents gathered in the lounge to greet the three and four year olds and together, young and old spent the afternoon reading, proving that age is no object when it comes to a love for books.

The afternoon was great fun for all; with residents from Statham Manor enthralled by the children with readings from their favourite books and sharing memories of their childhood. The pre-school children loved showing off their costumes and delighted the residents with their tales from nursery.

Farai Hanyane, registered manager at Statham Manor, says: "Over the course of the last two months, since the care home opened, we have welcomed several residents, so it was lovely to host a fun afternoon for them with the children from Back to the Garden Childcare.

"With the nursery situated next door to Statham Manor, the World Book Day visit will be the first of many inter-generational events hosted at the home, which we know have an incredibly positive impact on the residents and their wellbeing.

"You are never too old to enjoy a good story and seeing the residents read with the children was lovely; they loved learning about the little ones' favourite characters and were thrilled to share stories and memories from their childhood."

Statham Manor resident, Bill Hall, aged 82, adds: "I have always loved books and still enjoy reading, so it was a real joy to see the children today dressed up as characters from their favourite books and share stories with them."

Alison O'Connor-Limb, nursery manager at Back to the Garden, concludes: "It is so important that children respect and understand the

elderly people in our community. The best way to teach this is for the young and old to have contact, and enjoy time in each other's company. World Book Day was a great example of this.

"Our pre-school children were so excited to dress up and visit residents in the care home, bringing with them lots of books to read together. Storytelling is so important and we have daily sit down storytelling sessions at the nursery, where often parents and grandparents join us, which the children love. Without doubt, reading with the residents at Statham Manor was a great experience for the pre-school children – it was a wonderful opportunity for them to use their imagination and be creative."

Back to the Garden Childcare, with nurseries in Lymm and Altrincham, is an innovative child-led day nursery that focuses on active learning through outdoor play in a stunning garden setting. Its philosophy of allowing children to be children to explore their environment, experiment with the outdoor playscape and harness their own imaginations allows for a natural approach where each child develops at their own pace.

For further information, to book an appointment to view the new nursery, or for recruitment opportunities, please call Back to the Garden Childcare on 0161 388 2424 or visit www.backtothegardenchildcare.com.

New Care is one of the UK's leading care home providers. Its portfolio of purpose-built 'new generation' care centres is fast gaining an enviable reputation for outstanding care that is second to none. Statham Manor is New Care's latest care facility to open, offering individual, person-centred residential, dementia and 24 hour nursing care services.

For further information or to book an appointment to view the new care home, please call the team at Statham Manor on 01925 596000, email enquiries@newcarehomes.com or visit www.newcarehomes.com

G P BROADSMITH & SON
POOL FARM, LYMM
Bottled on the Farm
from our Free Range Cows

**DELICIOUS MILK FROM OUR HAPPY COWS
DELIVERED TO YOUR DOOR!**

Here at Pool Farm we take good care of our free-range dairy cows. They produce fresh, quality milk which is bottled in our own farm dairy and delivered to local doorsteps. We also stock a range of associated products such as eggs and potatoes, all sourced from local farms.

Call 757655 or email milk@broadsmith.com to discuss early morning deliveries to your doorstep and follow us on Facebook or Instagram at @broadsmiths where you can keep up to date with life on the farm!

G P BROADSMITH & SON
POOL FARM, POOL LANE,
STATHAM, LYMM, WA13 9BW
TEL: 01925 757655
YOUR LOCAL DAIRY Est. 1932

ANDY CARTER MP
Member of Parliament for Warrington South

I hold regular constituency advice surgeries at my Warrington South office and around the area.

To make an appointment call **01925 231 267** or email **Andy.Carter.MP@parliament.uk**

Provided by Stephen Taylor on behalf of Andy Carter MP of 1 Stafford Road, Warrington WA4 6RP. Funded through the allowances available to the Member of Parliament.

Sports Coach training at Kids Planet

KIDS Planet Lymm recently received a visit from Kids Planet's Sport Development Manager Kieren Heron.

The Lymm nursery has recently appointed a sports coach at the setting called Chi, who enjoyed learning from Kieren alongside coaches from Great Sankey, Stockport and Widnes settings.

Kieren, who is an experienced coach based at Kids Planet Clifton Lodge, revealed that supporting new sports coaches is his favourite thing about his role.

He helped Chi and the other coaches with an induction, as well as going through what is expected of them in their roles, session plan ideas and different techniques and best practice to use moving forward.

The group then went into the garden to enjoy two themed

sessions that show what a sports class should look like, all with the help of the well-behaved children in Lymm's Preschool.

Nicola Todd, Deputy Manager at Kids Planet Lymm, said: "We're grateful to Kieren for coming over to Lymm. It was great to get together with other coaches and share ideas and experiences. We did some really fun sports activities with the children and it helped give us some really strong ideas."

Having a sports coach at the setting is great as it means the children are all given the opportunity to get active and learn some new skills, whilst building on their teamwork and communication skills."



ELB fireplaces Ltd
 Call us on: 01942 607250
www.elbfireplaces.co.uk
 70 Twist Lane, Leigh, Lancashire WN7 4DP

Fire Surrounds, Stoves, Gas & Electric Fires



Established 40 YEARS

No need to change your carpet - made to measure fireplaces

Over 75 displays over 2 floors

Live wood burning stove on display

Is your conservatory too cold to use in Winter?
Why not install a stove?

YOUR LOCAL TAYLOR ROSE MW EXPERT

Operating out of 1-5 Palmyra Square South, Warrington, WA1 1BZ

Your trusted Warrington expert has transferred from FDR Law to Taylor Rose MW



We will provide you with clear concise advice:

Personal Services

- Clinical Negligence
- Crime & Extradition
- Dispute Resolution
- Employment & Benefits
- Family & Child
- Financial Matters
- Immigration
- Personal Injury
- Residential Property
- Wills & Probate

Commercial Services

- Alcohol & Entertainment Licensing
- Commercial Property
- Company & Commercial
- Costs
- Debt Recovery
- Directors Duties
- Dispute Resolution
- Employment Law
- Immigration
- Lender Services

Get in touch today to find out how we can help

Taylor Rose MW is a top 60 law firm with over 1,500 experts & offices nationwide.

Contact us on 01925 230000 or visit www.taylor-rose.co.uk





LYMM PARISH COUNCIL NEWSLETTER

The Parish Council has had a busy time preparing the budget for next year and looking for ways of maintaining current activities and commitments while dealing with new needs in the village.

Following the resignation of Cllr Kath Buckley, who still remains a Borough Councillor, the Parish Council co-opted a replacement Councillor. We are delighted to welcome Colin Oakley who will serve until the next elections in May 2024. Colin is well known in the village and chairs Dickensian Festival and, this year at short notice, agreed to manage Carols from The Cross on the night.

Volunteers are essential to keep the wide range of events and activities, which Lymm is famous for, alive. Volunteering opportunities range from simple hands-on work, to helping manage events and organisations. The Parish Council is holding a series of volunteer events, to bring members of the public and local groups together. If you have management skills and would like to apply them for the benefit of the community, or you are an organisation needing new board members, we would love to hear from you so that we can put you in touch with each other. Look out for our next volunteering event.

Volunteering is also an element of His Majesty King Charles's Coronation. The Bank Holiday immediately after the Coronation on 8th May 2023 is being branded as The Big Help Out. The Parish Council, as well as many regional and national organisations, will be posting opportunities to do something for the community on the day and beyond. Register your interest on www.lymmparishcouncil.gov.uk/big-help-out

To help the Parish Council prioritise spending a community poll has taken place both on-line and at a number of venues in the village. Lymm residents were asked to rank the 10 most pressing calls on the Council's limited budget in order of importance to them. We pride ourselves on being a "listening Council" so it is helpful to hear from Lymm residents about their priorities. Results will be published on the Parish Council website.

Community safety is a high priority for many. This is currently supported by the Parish Council paying for an additional PCSO (Police Community Support Officer) dedicated to Lymm. However we are unusual as a Parish Council in funding this. So, negotiations are taking place with Cheshire Police on the most appropriate way to police the village and meet residents' expectations. There was an opportunity to express views on this priority in our Community Poll.

Work continues on the project to replace the village hall roof. This is essential because of the cost and number of repairs now needed. This will lead to the closure of the village hall for a short time while the work is completed. However, there are other modifications required to improve the effectiveness of the village hall as a centre for our community. We have ideas on how the hall may be improved but are interested in hearing from users, or potential users, what they would like and will be asking for ideas and suggestions in the coming months.

As always, your Parish Councillors value the many ideas and questions posed to them by email or on the phone. Please feel free to contact us.

Cllr Bob Barr
Chairman

Contact information:

Clerk to the Council: Kerry Duffin - 07741 877870
clerk@lymmparishcouncil.gov.uk

Parish Council Website:

www.lymmparishcouncil.gov.uk

Lymm Parish Council 2023-24



Name: Cllr Bob Barr OBE (Chairman)
Address: 2A Danebank Road, Lymm WA13 9DH
Telephone: 01925 750910
Email: rbarr@lymmparishcouncil.gov.uk



Name: Cllr Ann Johnstone (Deputy Chairman)
Address: 3 Lakeside Road, Lymm, WA13 0QE
Telephone: 01925 755554
Email: ajohnstone@lymmparishcouncil.gov.uk



Name: Cllr Chris East
Address: 7 Newfield Court, Lymm WA13 9QU
Telephone: 07743 489329
Email: ceast@lymmparishcouncil.gov.uk



Name: Cllr Graham Gowland
Address: 32 Wychwood Avenue, Lymm, WA13 0NE
Telephone: 01925 751599
Email: ggowland@lymmparishcouncil.gov.uk



Name: Cllr Ian Marks MBE
Address: 80a Whitbarrow Road, Lymm WA13 9BA
Telephone: 01925 753051
Email: imarks@lymmparishcouncil.gov.uk



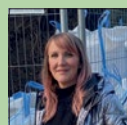
Name: Cllr Tim Martland
Address:
Telephone: 07759 078412
Email: tmartland@lymmparishcouncil.gov.uk



Name: Cllr Karen Rurlander
Address:
Telephone: 07717 855697
Email: krurlander@lymmparishcouncil.gov.uk



Name: Cllr Ben Selwood
Address: 44 The Crescent, Lymm WA13 0JY
Telephone: 01925 752624
Email: bselwood@lymmparishcouncil.gov.uk



Name: Cllr Sally Sharma
Address: 5 Baycliffe, Lymm WA13 0QF
Telephone: 07960 383148
Email: ssharma@lymmparishcouncil.gov.uk



Name: Cllr Julia Stansfield
Address: 46 Sandy Lane, Lymm WA13 9HQ
Telephone: 01925 758809 / 07928 848256
Email: jstansfield@lymmparishcouncil.gov.uk



Name: Cllr Stephen Towndrow
Address:
Telephone: 01925 757560
Email: stowndrow@lymmparishcouncil.gov.uk

Queens chosen for Lymm May Queen

THE new queens have been selected for the annual Lymm May Queen event which this year takes place on Saturday, May 13.

Lymm May Queen 2023 is Evie Dex and her Lady in Waiting is Ellie Wolstenholme, both pupils at Ravenbank Primary School.

Rose Queen 2023 is Iseabal Morrison from Cherry Tree Primary School and her Lady in Waiting is Harmony Seymour a pupil at Oughtrington Primary School.

May Queen field is open to the public at 11am. The parade through the village starts at 12 noon from Brookfield Surgery.

Admission will be £2 per adult, £1 for 3-14 and free for 2 and under. There will be lots of free entertainment on the day with plenty of reasonably priced rides for all ages including young children. There is a full field comprised of local artisans and a wonderful selection of food and drinks provided by more local establishments. The aim of organisers is to promote the vendors and traders within the local community to provide families with wholesome entertainment that is affordable for all to enjoy.

- Family entertainment to include:
- Giant 100ft inflatable obstacle course
 - Inflatable Zorb balls
 - Minions activity centre
 - Giant Inflatable Slide
 - Giant Camelot bouncy castle
 - Jet Plane Fair Ride (younger children)
 - Swinging Chairs (younger children)
 - Test your strength inflatable

- Rock Climbing Wall

Arena Entertainment:

- The Crowning of Lymm May Queen & Rose Queen
- Circus Entertainers
- BMX stunt show
- Local dance groups

- The famous Tug O'War competition

If anyone would like to enter a team of 6 strong contestants to challenge last year's champions please contact Dawn Poole dawn.lymmmayqueen@gmail.com

Pictures: Lady Morrison Photography



May Queen Evie Dex and her Lady in Waiting, Ellie Wolstenholme, both pupils at Ravenbank Primary School.



Rose Queen Iseabal Morrison from Cherry Tree Primary School and her Lady in Waiting, Harmony Seymour, a pupil at Oughtrington Primary School.

Less is More!

- Get paid quicker – Improving your cash flow
- Less time spent sorting old receipts – Free up countless hours each week.
- Less jargon and more proactive advice – Watch your business flourish.

Don't let these issues hold your business back.

To find out how we can remove your financial headaches call us:

01925 761600

or visit us at:

www.stylesandco.co.uk

styles and co
a xeinadin company



**E SMITH AND SON
PLANT CENTRE
WWW.LYMMPLANTS.CO.UK**

Where gardeners grow!

**THE NURSERY, BOOTHS LANE, LYMM, WA13 0PF
01925 752459**

**SPRING FLOWERING PERENNIALS
SEASONAL PLANTED CONTAINERS AND BASKETS
VEGETABLE PLANTS AND SEEDS
FRUIT TREES AND BUSHES
COMPOST, GROWBAGS AND SUNDRIES**

Gift Vouchers Available

OPEN 7 DAYS: MONDAY TO SUNDAY 10AM - 4PM

Pleas to reopen Oughtrington Community Centre Luncheon Club members appear to have



PENSIONERS locked out of Oughtrington Community Centre following a fallout between Trustees and volunteers were facing a fifth week (at time of press) without meals after appeals to re-open the twice-weekly events appear to have "fallen on deaf ears."

Since Lymm Life's sister publication Warrington-Worldwide broke the news online that members of the Oughtrington Luncheon Club had been locked out of the premises, after locks were changed, more than 100 local residents have now applied to become members of the community Centre, which has housed the volunteer-led luncheon club, originally run by well known community volunteer Joyce Penlington, for almost 40 years.

The fall-out followed a call from Community Centre Chair of Trustee Paul Gibson, demanding volunteers hand over their funds and vacate the premises, so the community centre could take on the running of the luncheon club.

Mr Gibson stated rising running costs as a reason for the decision.

Since the fall out local Cllr Ian Marks and Warrington South MP Andy Carter have joined forces and had a meeting with Mr Gibson in a bid to resolve the issue. It is understood a complaint has now been made to the Charity Commission to investigate, while Trustees have instructed solicitors to represent their interests.

The Luncheon club has around 20 members, some suffering from

dementia. Family members have taken to social media to express concerns about the situation which has left many of the members upset and distressed.

In the latest statement on behalf of the Luncheon Club, volunteer Derek Ridpath said: "The Save Oughtrington Luncheon Club Action Group can only, yet again, express our disappointment and concerns at the ongoing situation.

"All our attempts and those of others on our behalf, to find a solution and enable the re-opening of Luncheon Club have 'fallen on deaf ears'.

"We understand that attempts by Andy Carter MP and Lymm Parish Councillor Ian Marks to arrange another meeting to discuss the situation further have equally been ignored by all 3 trustees.

"The only people suffering are the Luncheon Club clients who have now had 4 weeks not being able to get out and enjoy a hot meal and more importantly each other's company.

"We can only hope the trustees will soon respond in a positive way and Luncheon Club service can resume sooner rather than later."

Mr Gibson has twice visited

Lymm Festival

SAVE THE DATE

LYMM FESTIVAL

22ND JUNE - 2ND JULY 2023

25TH ANNIVERSARY

CELEBRATING 25 YEARS

- FOOD PLUS
- SPOKEN WORD
- MUSIC
- ART & LITERATURE
- OUT & ABOUT
- COMEDY & DRAMA
- FAMILY FUN
- HERITAGE

#LymmFest23
www.lymmfestival.org.uk

Community Centre for "fall on deaf ears"

Lymm Life's offices near Warrington town centre and dropped off various correspondence but has so far failed to respond to emails appealing to re-open the premises for the luncheon club until a solution to the ongoing fall-out can be resolved.

Members of Lymm Parish Council were meeting as Lymm Life went to press to discuss the situation and will consider taking up a option to co-opt a person onto the board of Trustees.

Warrington South MP Andy Carter and local Cllr Ian Marks issued a joint statement following a visit to the Oughtrington Community Centre.

"We're very grateful for the Chair of the Community Centre Trustees meeting with us and for explaining some of the background

to the closure of the luncheon club. The structure of the Trust is complicated and there needs to be a resolution that will preserve the facilities for the local community in perpetuity.

"We're pleased that the Community Centre has confirmed that they want to see the regular lunch meeting resume. There are some outstanding issues to be resolved and we hope we can get all parties round the table to reach some agreement about the way forward."

Meanwhile, local residents have started a campaign to save the luncheon club and are urging members of the local community to apply to become a member at the Oughtrington Community Centre charity.



Luncheon Club members drop off new membership application.

HUPERADE LTD

YOUR TRUSTED SOIL PROVIDER



PROFESSIONAL & AFFORDABLE SERVICE

Our soil can transform your outside space into the garden you deserve.

SOIL SPECIALISTS DELIVERING

EXTRA FINE & GENERAL PURPOSE SOIL

WOODCHIP/MANURE – Bagged or loose tipped

OR A MIX OF MANURE & SOIL



Call: 0161 980 5350 for a quote
Or visit: www.huperade.co.uk
Email: gary.cash@huperade.co.uk



@huperadesoil



Family and friends set to climb a mountain in memory of Town Crier Peter Powell as AJ prepares to follow in granddad's footsteps

FAMILY and friends of Lymm's Town Crier Peter Powell, who sadly died earlier this year, are preparing to climb a mountain in his memory while raising funds for two of his favourite charities.

On August 26, members of Peter's family will be climbing Mount Snowdon, with some Lymm locals to raise money for two charities in his memory.

Peter's Grandson, AJ Powell, who has recently taken over as Town Crier, will also be joining the walk in his Town Crier outfit.

During the walk up Snowdon pictures and videos will be posted.

All money raised will be split between Peter's supported charities, Lymm in Bloom and Lymm Clothing Charity.

Meanwhile AJ is nearly all set to follow on his his granddad's footsteps as Lymm's official Town Crier.

He recently recreated his granddad's front page picture for the first edition of Lymm Life - 24 years ago this month!

Big thank you to Pippa Thomas Photography for recreating our launch issue image which is replicated on our front page this month!

Meanwhile, subject to paperwork and insurance coming through in time AJ is hoping to perform his first official public duty at Lymm Roundtable's duck race on Easter Monday, April 10.

Donations can be made online here www.gofundme.com/t/climbing-snowdon-for-charity



New Lymm nursery welcomes first intake of children 'Back to the Garden'

WITH build fully complete, Back to the Garden Childcare has officially opened its second nursery in the heart of Lymm and is welcoming its first intake of local children.

Expertly designed, the purpose-built £2million development on Statham Avenue sets new standards in childcare focussing on natural, child-led learning, exploration and play in an innovative indoor and all-weather garden setting complete with magnificent tepee and wooden play structures.

Lymm is the second site in the North West for Back to the Garden Childcare; the operator has a successful and popular flagship nursery in Broadheath, Altrincham, that has fast become the nursery of choice for discerning parents in Trafford.

Renowned for its holistic approach, Back to the Garden's philosophy allows children to be children, to explore their environment, experiment with the outdoor playscape and all its natural resources, harness the power of their own imaginations and to feel a valued part of an extended and caring family.

There is a deliberate and conscious focus on family values, socialising and good food with the nursery employing its own talented

kitchen team to deliver seasonally nutritious menus made from locally sourced organic ingredients, where possible, and shared around the table for the whole team to enjoy together.

Founder and director at Back to the Garden, Jeannie Pickering, commented: "We are incredibly proud of our second setting in Lymm and the new nursery team, and are very much looking forward to welcoming further children over the next few weeks."

"In the childcare setting, our role is to facilitate, to provide the best possible environment in which every child can develop at his or her own pace and learn naturally through the enjoyment of play and socialising with others and I can already see this happening with the team and our children."

Lymm resident and nursery manager, Alison O'Connor-Limb, added: "It is really very special to be here at the start of our journey in Lymm, to be meeting all of our new children and their families and see everyone settling in, starting to bond and explore our fabulous space. Over the next few weeks, we'll be introducing our forest schools programme and other exciting projects for the children and plan to develop an ongoing

relationship with the residents at the care home next door."

With 90 places for children from three months up to five years, Back to the Garden will expand gradually in Lymm with the aim of becoming a wonderful centre of gathering for children and families with a quarterly programme of events, educational sessions and supper clubs. Further boosting the local economy, job creation will continue with the nursery hand selecting only the most passionate and talented childcare artisans to enhance its team.

For further information on Back to the Garden, to discuss nursery places or to arrange a show around

of the Lymm setting, please visit www.backtothegardenchildcare.com or contact Alison on 01925 698942.

Back to the Garden Childcare is part of the award winning McGoff Group; a family-owned collection of like-minded businesses developing and operating within the healthcare, childcare and residential property markets. With 50 plus years of experience, the Group is able to acquire, design, build, operate and maintain delivering excellence, passion, innovation and collaboration across all of its projects. For further information, please visit www.mcgoffgroup.com



NEVER STOP STARTING

Retrain & upskill this spring at Warrington's leading provider of adult education.

We have a huge range of adult part-time, professional & leisure courses starting this month and next.

Courses starting soon:

- Brickwork
- Counselling
- Cybersecurity
- Digital & IT Skills
- Facial Massage & Skin Care
- Floristry
- Supporting Teaching & Learning in School
- Team Leading
- + many more!

We also have a variety of distance learning courses so you can study in your own time, from the comfort of your own home.

The best bit? Your course may even be FREE!*

Browse our full range of adult courses online: wvr.ac.uk/adults



Former counselling student starts her own practice.

Robynne Wood graduated from our Level 4 Therapeutic Counselling course last year and has since gone on to open her own private practice: Robynne Wood Counselling.

Robynne is asked a lot whether it was worth leaving her previous career in teaching to become a counsellor, to which her answer is always yes. She says: "It is 100% the best decision I've ever made. I've been reflecting on this graduation being so meaningful because I've worked so hard, but also how lucky I am to have found my calling in life."



Barbering student's new business venture is a cut above the rest.

Jamie Baines, who studies Level 2 Barbering, chose to study at the college as it's local to him and the course fits in perfectly with his other commitments.

Jamie has recently opened his own barber shop in Newton-le-Willows and feels the course and college facilities have thoroughly prepared him for this.

Upon completion of his course, Jamie hopes to progress on to level 3 to further develop his skills.



GAROLLA ★ PREMIUM
Increased Security • Double Insulation
One-Touch Close

PRICED EXAMPLE £895
COMPACT • UP TO 2.4M

FREE FITTING
PAYMENT ON INSTALLATION

PRICED EXAMPLE £1,990
PREMIUM • 3.4M • ANTHRACITE

PRICED EXAMPLE £2,740
PREMIUM • 5.1M • BLACK

Improve, Don't Move!

Maximise the value of your home.

- SPACE-SAVING – MAXIMISE YOUR GARAGE HEADROOM
- SECURITY-ENABLED AUTO-LOCKING SYSTEM
- CHOICE OF 21 COLOURS TO MATCH YOUR HOME
- REMOVAL AND RECYCLING OF YOUR OLD DOOR
- DEDICATED AFTER-CARE TEAM

GAROLLA 01925 205 009
ROLLER SHUTTER DOORS  LINES OPEN 7 DAYS A WEEK
www.garolla.co.uk

BESPOKE 
ELECTRIC DOORS
MANUFACTURED
IN THE UK

EXCHANGE YOUR GOLD AND SILVER FOR INSTANT CASH

All items of jewellery accepted

Did you know...?
We accept silver jewellery, cutlery, tea sets, spoons, cigarette cases, candlesticks, trophies, trays, medals, coins and pocket watches.

ROLEX WATCHES WANTED!
ANY CONDITION

Open: Tuesday-Saturday: 10am - 5.30pm
1 London Road, Stockton Heath
(First floor entrance on Fairfield Road)
07544 486 621

CHESHIRE GOLD & SILVER BULLION DEALER

Need IT Support at Home?

- Skilled and Friendly Technicians
- PC and Laptop Support
- Home Visit or Remote Dial-in
- Antivirus/Malware Check
- Unlimited Support Time
- Equipment Supplied: Laptops, PCs, Printers & Bespoke Builds



aspire Computers Ltd
Call our Team: 01925 251143
sales@aspire-computers.com | www.aspire-computers.com

Back to the Garden for new Lymm management team



BACK to the Garden Childcare has appointed a new management team at its recently opened nursery on Statham Avenue in Lymm.

Alison O'Connor-Limb, who lives in Lymm, has been appointed nursery manager whilst Rimini Legge, from Warrington, has been appointed deputy manager.

Alison is responsible for the overall day-to-day running of the nursery, managing the team and providing them with everything they need to teach, learn and care for the children. She is also tasked with maintaining statutory requirements and growing the new nursery as a business.

Ambitious, Alison hopes to enhance the nursery experience, ensuring her team is fully trained in child yoga and other holistic therapies, develop the Forest School and allotment area, introduce a

grow to eat space and maintain an inspiring outdoor curriculum.

Supporting Alison is Rimini, who has worked for Back to the Garden Childcare for many years at the Altrincham nursery, starting off as an apprentice for Early Years and progressing to nursery practitioner and unit leader before being promoted to deputy manager in Lymm.

Rimini's new role will see her assist Alison with managerial duties, as well as being in the individual rooms alongside the nursery practitioners and children to enhance the experience and guide staff in the company's unique approach to learning.

Care professional used yoga and meditation to help clients

A CARE professional from local home care company Home Instead Warrington and Lymm has proved the benefits of drawing on her background in yoga and meditation to enhance the wellbeing of her clients in helping them to relax and stay calm.

When she started working at Home Instead, Kerry Hardy had a bright idea to draw on the techniques and her passion for yoga into her role as a care professional. Combining both of her passions has given her an increased sense of purpose and fulfilment, and it's safe to say that clients have benefited from it hugely.

Having practiced yoga for over two decades, Kerry knows full well the benefits that such a holistic approach can have on people's physical and mental health.

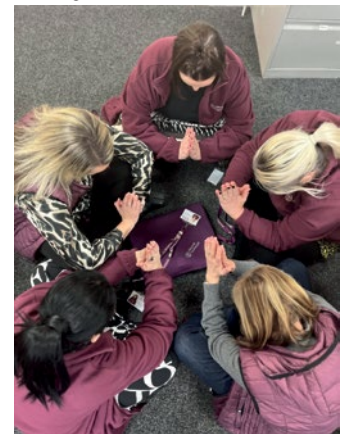
Kerry said, "I am hoping to introduce some of aspects of my background to many more of my client. There has been an incredible improvement in my clients' physical and mental health since I started helping them with the basic principles behind yoga during care visits.

"The deep breathing techniques help the clients to be more present, helping them to let go of the past and not to worry about the future. I enjoy working with individuals because I love connecting with my clients on a deeper level. I can't even put into words how privileged I feel to be able to spend time with my clients;

they have taught me so much! I love hearing their stories and no two days are the same!"

A Home Instead Warrington and Lymm client commented, "I love it when Kerry comes round. Kerry's breathing techniques have helped me feel more calm and less anxious. She has really helped me cultivate peace and has taught me how to accept anything that life throws at me. I can't praise her enough. I hope that other people like myself adopt this approach: they won't regret it!"

For more information on Home Instead and the services they offer including specialist dementia care, visit: www.homeinstead.co.uk/warrington



Oughtrington Bowling Club joining the Great British Bowling Weekend



OUGHTRINGTON Bowling Club based at Stage Lane, are following up on last year's Great British Bowling Weekend with another open day for the start of the 2023 season.

The 2022 Open day was a huge success adding 20 new members. The green will be open to visitors between 10.00 and 4.00 on Saturday April 29 for a go at bowls and a cup of tea.

The Club which has a hundred members has enjoyed its idyllic location for 100 years but always welcomes new members to carry on the legacy and to share the joy of the sport.

Chairman Fred Taylor said – "This is a fantastic sport where grandparents can participate alongside their grandchildren. Mums and dads don't stand on the side lines watching but join in and play together"

"The Club has teams in

competitive leagues playing across Cheshire, but also welcomes those who enjoy a social game on a sunny afternoon"

Club Secretary John Groves said "The health benefits of bowling are recognised nationally – whether from the benefits of being outside, physical activity – not necessarily too strenuous, meeting other people – a good stretch of the limbs and a great way to de-stress after a busy day"

The Club can provide instruction and bowls for new starters to try things out and would be delighted to meet anyone interested on the open day or they can be contacted via email at oughtringtonbc@outlook.com



Your pet questions answered

By Dr Diane Wilshaw
Lymm Veterinary Surgery



Q: I have a female Guinea Pig who appears to be losing the fur on her back – is this normal?

A: Without knowing a lot of information about your Guinea Pig in terms of her husbandry and environment, Mange is one common cause of hair loss in Guinea Pigs and this may have been 'introduced' via their hay or bedding. Treatment for such an issue is usually straightforward however, it needs an accurate diagnosis to ensure the relevant treatment is given.

Q: My budgie's nails are really long. Can they be cut and is this something I can do?

A: The nails can be cut but it would be wise to ask your vet to show you how to do this correctly the first time. Basically, you hold the budgie in one hand so that the wings are held tight. Turn the budgie upside down and with a pair of regular nail scissors trim off the light-coloured nail at the top.

You may need to do this in stages as the 'quick' (the part with blood vessels in) grows with the nail and if this is cut will cause bleeding and injury to the bird.

Q: My cat has something in her stools. They are white and look like grains of rice – and they are alive. What are they?

A: What you are seeing are tapeworms. Tapeworms do not always look like long worms. A suitable worm treatment will solve the problem. Most vet surgeries will provide free advice on a suitable preventative protocol to stop the problem recurring.

Q: Can you tell me the best way to get dogs teeth clean. He has a small amount of tartar building up. I have tried toothpaste but he will not let me brush his teeth so what can I do / give him to help clean his teeth?

A: We advise starting with a small amount of pet toothpaste just on the end of your finger and using your finger to run along his teeth and gums initially. After doing this it is important to reward him, either with a treat (even though that seems counter-intuitive) or a game or belly rub depending on his preference. It is about getting him used to having its teeth brushed and can be dropped when he is used to it.

Once he is ok with you using your finger get a finger brush which looks like a thimble and fits on your finger with nice bristles to help with breaking up the plaque.

For some dogs especially the smaller breeds this remains easier than trying to use a brush but again if they are used to the finger brush then moving on to the toothbrush is the next step.

If this doesn't work, there are a variety of dental chews on the market which can help, but be mindful if using these regularly as they can have a high calorific value.

My cat gets into fights and seems to always get his ears cut which then go septic. I use cotton wool and warm salt water to bathe them, and it seems to do the trick. Am I doing the right thing?

Cats do scarp and if the wounds are not deep then cleaning them as you have described will help. If there is pus present or the cat is unwell then antibiotics and pain relief may need to be prescribed.

Give your puppy the best start in life with our

Puppy Pack



Our Puppy Pack includes:

- Full Puppy Vaccination Course
- One month worm and flea treatments
- Puppy diary

- Discount vouchers
- 4 weeks free insurance
- Initial health check with a vet
- Lead and sticker
- Puppy information book



ALL FOR
£60.00

TEL: 01925 752721

10 Booths Hill Road, Lymm, Cheshire WA13 0DL



Lymm RFC host 300 children for Wolves Foundation Festival

LYMM Rugby Club welcomed 300 primary school children to their state-of-the-art artificial grass pitch for the Warrington Wolves Foundation Festival.

The festival was the culmination of six weeks of coaching by Warrington Wolves Foundation to year 3 and 4 pupils at Lymm centred schools.

Boys and girls were taught basic rugby skills over a number of weeks whilst being coached by Warrington Wolves Foundation. The schools involved included Appleton Thorn, Broomfields, Cherry Tree, Grappenhall Heys, Grappenhall St Wilfred's, High Legh, Oughttrington, Ravenbank, Statham and Stretton St Mathews.

Fun was had by over 300 children who were presented

certificates by Warrington Wolves' own mascot Wolfie.

Participants were encouraged to continue their rugby journey at their own local grassroots club including Lymm Rugby Club who offer training and games weekly every Sunday morning.

Lymm Rugby Club has a proud tradition of introducing children to rugby using the RFU's core values of teamwork, respect, enjoyment, discipline, and sportsmanship. The club has teams from Under 5s to Colts and adults with a total of 400+ mini and juniors. Notable graduates include Ross Harrison

and Alex Mitchell of Sale and England respectively, the latter gaining his second cap for England against Italy this month.

Anyone interested in joining

Lymm Rugby Club are encouraged to contact Will Hind (M&J Chairman) at will.hind.lymmrugby@gmail.com

Alternatively please visit www.lymmrugby.co.uk



Huge success for Lymm Past Players Day

NEARLY 100 past players attended the annual Past Players reunion on Saturday February 18 at Lymm Rugby Club, enjoying both a buffet lunch, a range of superb beers and an Irish Folk band after the match.

The atmosphere was buzzing as old chums from across the generations got together for a catch-up.

President Neil Kelly also welcomed former England international and Lymm Colt and first team player David Strettle who added a little stardust to the day. Living now in Kent but with business interests in the North West 'Strettle' was keen to revisit his old club. 'I'm up here quite a bit these days so hopefully I'll pop in and see my old mates whenever I can,' he

commented.

'Delighted to see so many former players and the day has been a huge success,' commented President Kelly. 'This has been an outstanding season for the first team squad and, although we lost out on the pitch today, we've had some fun in the clubhouse!'

'A quick thank you to all who made the effort to attend,' commented Tony Wright, who organises this event every year. 'Losing to Macclesfield in the last minute was a disappointing result, but ironically the first team is in a better position than before we kicked off due to the two bonus points, as Blackburn lost with no bonus points,' he added.



Lymm President Neil Kelly with former Lymm player and England International David Strettle

The work of a magistrate

SPEAKER at the monthly meeting of Heatley WI was Paula Jones, a local magistrate.

She gave members an interesting talk on the work of a magistrate, the requirements to become one and the rigorous training needed. A short quiz then took place relating to the talk.

Members asked many questions which she was able to answer.

Business matters were present by secretary Ann Oakes and correspondence was read out, including information about the Cheshire Show, the annual Council meeting at Winsford and other events to be held at CFWI headquarters in Cheshire.

The annual birthday party will be held at High Legh Community Centre in July.

Suggestions for future speakers and trips out were requested.

Further information about Heatley WI: Tel 01925 752014.

Established 1878

John Burrows & Sons
Fourth Generation Independent Family
Funeral Directors

Friendly & Professional Service
Day or Night ~ J. Tandy

The Old Smithy, Mill Lane, Lymm,
WA13 9SE Tel: (01925) 752501

Golden Charter
Funeral Plans

www.johnburrowsandsons.co.uk

Obituary

Jill Paton-Williams

THE funeral has taken place of Jill Paton-Williams of Higher Lane, Lymm.

Jill passed away in hospital after a short illness aged 93, surrounded by her family.

She will be sorely missed by her husband, children, grandchildren and great grandchildren.

Funeral arrangements by John Burrows and Sons of Lymm.

CLASSIFIED

Call 01925 631592 to advertise

ACCOUNTANCY & BOOKKEEPING

BOOKKEEPER/ACCOUNTANT. Licensed for maintaining financial records, VAT Returns, Payroll Service, Management Accounts. SAGE Software Consultancy. **Contact: 07815 617914.** (C*)

CARPET CLEANING

A1 STAINBUSTERS. A Warrington company cleaning carpets, hard floors, Upholstery (Leather + fabric) and curtains in situ. FREE quotes for domestic and commercial. Approved carpet cleaners for Hancock and Woods for over 10 years. **Call John on 07765 314080** (B/22)

SIMPLY THE BEST CARPET CLEAN YOU will ever have. Cleaners UK Ltd. Est over 35yrs. Have your carpets & sofas beautifully deep cleaned leaving them fresh smelling & colour restored. Latest & best methods. Dry/steam. Leather cleaning, oriental rug specialist. Professional, reliable & affordable. **For more info call Neil Riley on 01925 264989 / 07831 336060 www.cleaners-uk.net** (A/23)

CLEANING SERVICES

SIMPLY THE BEST CARPET CLEAN YOU will ever have. Cleaners UK Ltd. Est over 35yrs. Have your carpets & sofas beautifully deep cleaned leaving them fresh smelling & colour restored. Latest & best methods. Dry/steam. Leather cleaning, oriental rug specialist. Professional, reliable & affordable. **For more info call Neil Riley on 01925 264989 / 07831 336060 www.cleaners-uk.net** (A/23)

ELECTRICAL CONTRACTOR

TRUST PROPERTY ELECTRICAL SERVICES. NICEIC Part P Approved Contractor. All Electrical work undertaken. Inspection & Testing & PAT Testing. All work certified & guaranteed. **Call Tim on 07754409906 or 01925 601055** (G/12/22)

RE-UPHOLSTERY

Orchard Soft Furnishings

RE-UPHOLSTERY
CURTAINS • BLINDS

FREE MEASURING & FITTING

TEL:(01925) 756388
www.orchardsoftfurnishings.co.uk (C*)

TYRES

EI/ERGREEN Centre of Excellence

Express
Mobile Tyres

Local Family Business. Est. 1997

01925 810000
www.expresstyres.co.uk
Order Online Today!

Branded & Budget Tyres
Cars, Vans, 4x4's, Caravans
Light Commercial
& Performance Vehicles

The tyre service that comes to you at home or your place of work

No Call Out Charge!

BRIDGESTONE MICHELIN
GOODYEAR Continental (C*)

CAR SALES

PARKVIEW CAR SALES

We buy and sell QUALITY CARS
Best price paid

Telephone Peter on 01925 575737 / 07957 545479

23 Padgate Lane
Padgate, Warrington
Cheshire, WA1 3RS (C*)

GARDENING SERVICES

- All aspects of tree surgery
- Stump grinding
- Waste removal
- Locally based
- Free quotation

Beechwood Industries
www.beechwoodindustries.co.uk
01925 860544 (C*)

TAXI / PRIVATE HIRE

Horn's

Airport Transfer & Taxi Specialists
CALL MARTYN: 01925 751761
MOBILE: 07881 786250 (G3/24)

To advertise in the classified section from as little as £15+vat

Call us now on 01925 631592

CHILD CARE

OFSTED REGISTERED CHILDMINDER
Lives close to Ravenbank School. Full time or Part time placements available. Pick up and drop off from Ravenbank School or Rosebank Nursery. From ages 0-12 years. **For more information contact Carole on 07731 089656 or leave a message on 01925 755108** (A/23)

CLEANING SERVICES

arleys angels

- Spring Clean Specialists
- Presenting your home for sale
- Moving house
- After building work cleans

01925 266834
... because you're worth it! (C*)

PHOTOGRAPHY

FAMILY & PET PORTRAIT PHOTOGRAPHY
Lymm based Andrew Collier Photography specialises in family and pet portrait photography using Lymm locations as a backdrop. Personal service with beautifully made frames and albums. **Call Andrew on 01925 471091 or visit www.andrewcollierphotography.co.uk** (G4/22)

PAYROLL

WHY TRY TO BE A PAYE EXPERT?
Watkinson Black can provide a cost effective payroll service, releasing you to concentrate on your business. **For further details please phone: 01925 413210 or e-mail: info@warringtonaccountants.co.uk** (C*)

twentyfour seven design & print ltd

We supply and fit all types of signage: self adhesive graphics, glass, metal, wood, perspex, foamex plastic.

Call or email for a free site visit.

01925240247 **info@247print.net** **www.247print.net**

Obituary Notices

While Obituary notices are published free of charge, due to pressures on space, we can never guarantee they will be used and there can also be a delay of several months.

If you would like to guarantee a notice to appear in the next available issue, these can be purchased for £75 plus VAT which helps towards the running costs of your free community magazine.

To place an obituary notice or any other public/family notice please email info@lymmlife.co.uk

Your notice will appear the same size as this advertisement.

The North West's leading supplier of concrete

www.barrowmixconcrete.com

BARROW - MIX

1984-2023
39TH YEAR
ANNIVERSARY



FREE SITE SURVEY

6 DAY SERVICE

All areas covered

Free barrowing service

Only pay for what you lay

From half a cubic metre upwards

Levelling/laying service if required

(minimum charge)

We can supply

C25, C30, C35 Fibre Reinforced



VISA

MasterCard

Maestro

SOLO

Call NOW for a FREE quotation

01565 734111 or 01942 722629