

Lymm Life

Magazine

ISSUE 283 | FEBRUARY 2023
DELIVERED FREE TO 5000 HOMES



urban

BUILDING PROJECTS LTD

Extension &
Building Renovation
Specialists

Tel: 01925 730888

www.urbanbuildingprojects.co.uk



LYMM
PARISH
COUNCIL

Approved by Lymm Parish
Council as the official
magazine for Lymm



CJ ROUND
LANDSCAPES

Landscaping - Design - Patios
Decking - Fencing - Walls

01925 752468

www.cjroundlandscapes.co.uk
facebook.com/cjroundlandscapes

5k a day
for powerchair club

Page 13

Maskell



Josephson

THE OPTOMETRISTS

Independent eye-care for all the family
since 1983

0161 941 6517

www.maskelloptometrists.com

Regular news updates at www.warrington-worldwide.co.uk

Editor
Gary Skentelbery

Production
James Bryan

Advertising
James Balme
Telephone
01925 631592

Editorial
01925 623633

Email
info@lymmmlife.co.uk

Websites
www.lymmmlife.co.uk
www.culchethlife.com
www.frodshamlife.co.uk
www.warrington-
worldwide.co.uk
www.warrington.tv

Address
New Media Centre
Old Road Warrington
WA4 1AT

*Lymm Life is published
monthly by Orbit News Ltd.*

*The contents of this magazine
are fully protected by copyright
and nothing may be reprinted
or reproduced without prior
permission of the publishers.*

*The publishers are not liable for
any statement made or opinion
expressed by third parties in this
publication.*

Printed by TwentyFourSeven

Editor's Comment



WHILE I knew what was coming as I interviewed Lymm Town Crier Peter Powell for a final time at Lymm Dickensian Day it didn't make it any easier reporting on his death.

He was a true gentleman and community champion who has been a huge part of my life in the media – helping out on numerous occasions – none more so when we launched the first edition of Lymm Life way back in April 1999.

Although Peter always looked "old" to me (I'm only 15 years younger) he hardly seem to age over the years, while my hair went from jet black to silver grey!

That was probably because I saw him so often out and about at community events, or in the countless photographs we received of him at community events. He simply never seemed to change.

In almost quarter of a century hardly a month passed by without

seeing his beaming face as he proudly launched and opened events around our community.

He was one of those constants in life that you could always rely on. He certainly never let me down and was always praising Lymm Life and Warrington Worldwide and our work in the community.

Whatever was going on he always took time to have a chat. Never once did I hear him moan or complain about any event he was at – although I am sure he could tell a tale or two over a pint in one of the local pubs.

Village life and community events will certainly never be the same again without him.

Peter was always supportive of

everything I reported on, always made himself available for photo calls or events I asked him to help out with, even touring the village on an open top bus celebrating 20 years of Lymm Life magazine – never once did he ask me for money – sometimes a donation to a charity but he always delivered the goods!

I know he will be hugely missed by many, especially family and close friends.

I will certainly miss one of life's great characters who was an excellent role model for service above self!

RIP Peter – I will miss our interviews but be there supporting your grandson AJ as he takes on your role.

Enjoy ringing that bell at the pearly gates!



N & J STANHOPE

Coal and Log Supplies

Best Quality Coal

Smokeless Fuel

Logs Supplied in Bags and Bulk

Caravan Storage

Open 6 Days. Closed Sunday

Broomedge Farm

Burford Lane, Lymm WA13 0SE

Tel: 752830

Mobile: 07979 785 421

WINNERS
Caring UK Awards 2021

Excellence and Innovation
in Dementia Care

RUNNERS UP
NAPA 2021 Arts in Care



OPEN for
New Admissions
Virtual & In-house tours
available

Award-winning dementia friendly Care Home

Exceptional care & facilities – including sensory garden & full activities programme



Dementia Care • Residential Care • Respite

www.keatehouse.com

Call: 01925 752091 Email: enquiries@keatehouse.com

9 Brookfield Road, Lymm, Cheshire WA13 0QL



**NAPA Award Winners 2017, 2018
Plus 2020 – Best Activity Team**



Cheshire Grange's decorations from around the World

STAFF and residents at Cheshire Grange care home, in Lymm got out the baubles and unravelled the fairy lights, ready for a whole host of Christmas celebrations.

They decorated 10 trees in total – but one was a little bit more special to the residents. The theme was “decorations from around the world.”

Last Christmas during Covid restrictions, the carers reached out to families and their friends to send in international decorations.

This year they were able to add to the tree which proudly displays baubles from places as far apart as London and Australia, Dubai and Dublin, Canada and Italy.

Residents and visitors loved looking at the tree – donated by Robert and Louise from Grappenhall Christmas Trees – and talking about places they've visited.

General manager Dawn Holsgrove Smith said: “Christmas is such a magical time and our residents love nothing better than to help decorate their home for the festive season, reminiscing about many Christmas past. It is so special to be able to share these rituals and we all love to see the home decorated and filled with Christmas spirit.”

Norma, a resident at Cheshire Grange said: “It takes me back

to my childhood when the whole family used to decorate the tree together with all kinds of different home-made baubles and paper chains, it was always such a special time. I just love to see all the Christmas lights up, if I had my way we'd never take them down!”

If anyone is on their travels and spots a tree decoration, bear Cheshire Grange in mind.

Cheshire Grange is run by Barchester Healthcare, one of the UK's largest care providers



Professional tree services

Free Quote

- Domestic
- Commercial
- Site Clearance
- Vegetation management
- Stump grinding
- Re-planting
- £10m public liability insurance



Beechwood Industries
www.beechwoodindustries.co.uk

For more information, please call us on
01925 860544








SPRING INTO GARDENING WITH PRIMROSE



**SEED POTATOES,
ONIONS & GARLIC BULBS**



**SPRING FLOWERING
PLANTS**



PRIMROSE HILL
NURSERIES

Est. 1935

OPEN TO THE PUBLIC AND TRADE: MON-SAT 8.30am-5pm. SUN 10am-4pm.
WARRINGTON ROAD, HIGH LEGH, KNUTSFORD, CHESHIRE WA16 0SQ. 01925 752635

What's On in conjunction with Lymm Parish Council



LYMM PARISH COUNCIL

Tuesday February 14th, 7:30pm
Lymm Parish Hall
Check www.lymmparishcouncil.gov.uk for details.

LYMM THURSDAY EVENING BRIDGE CLUB

Lymm Village Hall every Thursday 7pm
Details: 07708 172015

MAPLE LODGE ART GROUP

Meet each Wednesday 9.30am - 11.30pm
Oughtrington Community Centre, Lymm
Details: 01925 755926

ROTARY CLUB OF LYMM

Meets at Warburtons Parish Rooms on the 2nd and 4th Wednesday each month at 8pm
Contact 01925 919053

LOVING HEARTS & HANDS

Knitting for charity at Lymm Methodist Church, 2nd and 4th Thursday each month. 1.30pm - 3pm. Details: 01925 753298

LUNCH AT THE BROW

Eagle Brow Methodist Church
2nd Friday in the month
Light lunches 12 noon till 1.30pm.
All proceeds to The Y Project Room at The Inn

GARDENING CLUB

Meet Third Wednesday of the month
Lymm Baptist Church, Higher Lane. 7.30pm
Visitors welcome. £2 includes tea and cake

LYMM FLORAL ART GROUP

Lymm Village Hall
Third Monday of the month (except August and December) at 7.30pm. Visitors most welcome. Contact: 07876 176501
lymmfloralart.org.uk

LYMM PHOTOGRAPHIC SOCIETY

Every 2nd and 4th Wednesday (ex July & Aug), 7.30pm
Spread Eagle pub, Eagle Brow.
Details: www.lymmphotosoc.org.uk

LYMM WINE AND BEER CIRCLE

3rd Wednesday of the month, 8pm
The Spread Eagle Hotel
Details: 01925 756444

LYMM CONCERT BAND

Rehearsals every Thursday evening
United Reformed Church, 8pm.
Details: 01925 752934

LYMM WI

Every second Wednesday, 2-4pm at Lymm Youth and Community Centre. Visitors welcome.

LYMM BOOK CLUB

Second Thursday of the month 7.30pm,
Spread Eagle, Eagle Brow. Details 01925 752371

LYMM AND DISTRICT MIXED VOICE CHOIR

Every Wednesday 7.30 Lymm Methodist Church. Contact 01925 601664.
cath@cstones.co.uk

PROBUS CLUB OF LYMM

A small, friendly social club for retired people. Meets on second and fourth Tuesdays at 2:15pm.
Details: www.lymmprobus.club

LYMM DINGLE PROBUS CLUB

A friendly busy social club for retired men. Meets on alternate Thursday afternoons at Lymm Baptist Church.
Details: www.lymmdingleprobus.club
Club secretary 01925 759995

FRIENDS OF LYMM LIBRARY CRAFT GROUP

Lymm Sanctuary Hub
Fridays 1.30-3.00pm
Details: 01925 754016

HEATLEY WI

Meets the second Thursday of each month at Oughtrington Junior School, 7.30pm
Visitors welcome. Details: 01925 752014

LYMM & THELWALL U3A

Speaker meeting 3rd Thursday of the month (excluding August & December) at Thelwall Parish Hall 10.00am. Prospective members welcome.
www.u3asites.org.uk/lymm-thelwall/home
Contact: enquiries@lymmthelwallu3a.org.uk



LYMM PARISH COUNCIL

Tuesday February 14th, 7:30pm
See parish council website for details.

The Lymm Tree – a whole community project

AT Christmas, the Lymm Tree - created by enthusiastic crocheters and knitters in the village - had a festive appearance.

But for the rest of the year, the plan is for the tree, in the community garden at the Sanctuary Hub – to have a changing theme to reflect the time of the year or support local events.

Crafters of all ages contributed to the community project, making 759 squares and Christmas lights.

The squares were crocheted together by a team of three who estimated that if the squares were laid out end to end they would stretch for 154m.

Anne Gannon devoted her time to teaching novice crocheters how to make a "granny square" and the Mojo craft workshop provided space. Lymm resident Paul Middlehurst designed and made a steel and wire structure – a four

meter high frame made up of three different-sized cones.

The Spread Eagle pub and the Sanctuary Hub provided space for the team to plan and construct the giant blankets of squares.

Donations were received from Lymm Parish Council and the Sanctuary Hub as well as more than £500 from the local community.

Parish Council chairman Cllr Bob Barr officially unveiled the tree at a special ribbon cutting ceremony and lights switch-on.

He said: "This project shows how talented and creative the people of Lymm are. With so many people, businesses and supporters joining together, it really has been a whole community project."



G P BROADSMITH & SON
POOL FARM, LYMM
Bottled on the Farm from our Free Range Cows

**DELICIOUS MILK FROM OUR HAPPY COWS
DELIVERED TO YOUR DOOR!**

Here at Pool Farm we take good care of our free-range dairy cows. They produce fresh, quality milk which is bottled in our own farm dairy and delivered to local doorsteps. We also stock a range of associated products such as eggs and potatoes, all sourced from local farms.

Call 757655 or email milk@broadsmith.com to discuss early morning deliveries to your doorstep and follow us on Facebook or Instagram at @broadsmiths where you can keep up to date with life on the farm!

G P BROADSMITH & SON
POOL FARM, POOL LANE,
STATHAM, LYMM, WA13 9BW
TEL: 01925 757655
YOUR LOCAL DAIRY Est. 1932

ANDY CARTER MP

Member of Parliament for Warrington South

I hold regular constituency advice surgeries at my Warrington South office and around the area.

To make an appointment call **01925 231 267** or email **Andy.Carter.MP@parliament.uk**

Promoted by Stephen Taylor on behalf of Andy Carter MP of 1 Stafford Road, Warrington WA4 6RP. Funded through the allowances available to the Member of Parliament.

Get to town for £2

cut price bus fares

from

January 2023

bus fares are changing

warringtonsownbuses.co.uk

Warrington's

own buses

Lib Dems welcome finding that Local Plan is "unsound"

LOCAL Liberal Democrats have welcomed the preliminary finding from Inspectors that the current version of the Warrington Local Plan is, to use the planning jargon, 'not sound'.

Warrington Borough Council has received a 10-page summary spelling out their initial thoughts on the Public Inquiry held in the autumn. A number of modifications will be required which will be subject to a further six weeks of public consultation.

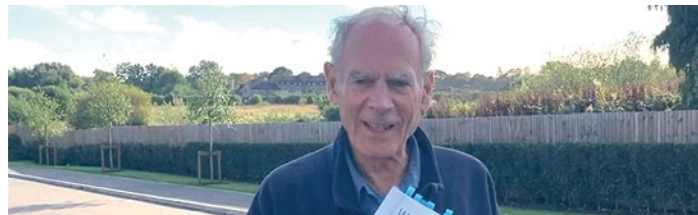
Chairman of the Liberal Democrat Council Group, Councillor Ian Marks (pictured) says, "We have been strong supporters of the South Warrington Parish Council Planning Working Group. This Group published a document in October 2021 urging the public to submit their views which stated that the Plan was not sound for many reasons. There was no justification for predicted growth, no need for the volume of housing and mass of employment land, no justification for the scale of Green Belt release, no need for the harm to air quality and local ecology, no need to destroy the landscape and character of our villages, no clarity on the means of delivery and no explanation of how the already poor transport infrastructure of Warrington can cope with increased levels of traffic."

"It is gratifying that the Inspectors agree with us on many of these points. We welcome the finding that the amount of employment land

needed to be released from the Green Belt is much too high. They say there is no strategic justification for the South East Warrington Employment Area being released which should mean that the massive logistics site, Six/56, will not be allowed. They say that this would result in a significant encroachment into the countryside and the visual harm to the openness of the Green Belt would be severe.

"At the last Council meeting, I asked a question about the future of the controversial Western Link Road and whether any additional funding was coming from government to cover the gap that has opened up. The reply confirmed that the Council had not yet found any additional funding despite being still committed to this project. The Inspectors are dubious about whether any funding will be secured which they say puts the delivery of this link in serious doubt.

"Their letter has some good comments about the importance of ecology, biodiversity and natural habitats but doesn't say as much as we would have expected about the critical importance of physical and social infrastructure to support any development. We will have to wait for the full report for more clarity



on what modifications are required for the Plan to become 'sound'. Liberal Democrats recognise the importance of having a Local Plan

to stop a free-for-all by developers but we will continue fighting to ensure it is a Plan that is acceptable to the public."



Call us on: 01942 607250
www.elbfireplaces.co.uk
 70 Twist Lane, Leigh, Lancashire WN7 4DP

Fire Surrounds, Stoves, Gas & Electric Fires



Established 40 YEARS

No need to change your carpet - made to measure fireplaces

Over 75 displays over 2 floors

Live wood burning stove on display

Is your conservatory too cold to use in Winter?
Why not install a stove?

YOUR LOCAL TAYLOR ROSE MW EXPERT

Operating out of 1-5 Palmyra Square South, Warrington, WA1 1BZ

Your trusted Warrington expert has transferred from FDR Law to Taylor Rose MW



We will provide you with clear concise advice:

Personal Services

- Clinical Negligence
- Crime & Extradition
- Dispute Resolution
- Employment & Benefits
- Family & Child
- Financial Matters
- Immigration
- Personal Injury
- Residential Property
- Wills & Probate

Commercial Services

- Alcohol & Entertainment Licensing
- Commercial Property
- Company & Commercial
- Costs
- Debt Recovery
- Directors Duties
- Dispute Resolution
- Employment Law
- Immigration
- Lender Services

Get in touch today to find out how we can help

Taylor Rose MW is a top 60 law firm with over 1,500 experts & offices nationwide.

Contact us on 01925 230000 or visit www.taylor-rose.co.uk



**TAYLOR
ROSE MW**

SMART
MODERN
LAW



LYMM PARISH COUNCIL NEWSLETTER

Lymm Parish Council is looking forward to a busy year in 2023.

Firstly, the Parish Councillor vacancy that has arisen due to the resignation of Councillor Kath Buckley will be filled by co-option at the February Full Council meeting. For more information and how to apply to become a Parish Councillor, visit the Parish Council website or contact the Clerk.

We are very pleased to have seen a very large and enthusiastic turnout at Carols from the Cross. We estimate that nearly 4000 people attended this traditional opening to Christmas in Lymm. The size of the event requires much more stringent planning and a wide range of safety measures. We are very grateful to all those who volunteered and helped at the event as well as the professional support from Lymm Radio, Luminate, Mersey Medical, the road closure team and the Police. The event couldn't have gone ahead without that support. We are already planning next year's event and looking at lessons we can learn from this year to make Carols even better.

The Warrington Local Plan has been reviewed by the Government Inspector and a number of modifications have been proposed. There are few changes in Lymm, however the rationale for taking the proposed Six/56 logistics site, next to the motorway junction, out of the green belt has been challenged by the inspector. This is good news and makes it much less likely that the development will go ahead. The Parish Council has taken a leading role in The South Warrington Parishes Group that was very active in challenging the Local Plan with professional support.

The Parish Council environment team keeps very busy improving the look of the village and keeping it tidy. They post examples of their work on Instagram at "lymmparish". You can help by picking up, or not dropping litter, joining one of the litter picking groups and tidying the area in front of your home. While they work very hard, our small team can't be everywhere in the village or do everything needed.

The Village Hall roof is in need of replacement. This is complicated by the location of the hall in the Conservation Area and the cost of a like-for-like replacement of the ornate tiled roof. We want to ensure that the hall is out of use for as short a time as possible, that the new roof is as cost-effective as possible while satisfying the Planning Authority and the Conservation Officer in Warrington and that it contributes to reducing carbon emissions and reducing energy costs. A working party, with professional support, has been set up to deal with this project.

Road safety is a priority for the Parish Council, because residents tell us how important it is to them. However, we rely on the Police and Warrington's Road safety team to implement measures as we have no powers to do so. A number of safety projects are currently under consideration.

We always welcome suggestions, comments, complaints and compliments from residents. Please feel free to contact the Parish Clerk or your Councillors with your ideas and concerns. Happy New Year.

*Cllr Bob Barr.
Chairman*

Contact information:

Clerk to the Council: Kerry Duffin - 07741 877870
clerk@lymmparishcouncil.gov.uk

Parish Council Website:

www.lymmparishcouncil.gov.uk

Lymm Parish Council 2023-24



Name: Cllr Bob Barr OBE (Chairman)
Address: 2A Danebank Road, Lymm WA13 9DH
Telephone: 01925 750910
Email: rbarr@lymmparishcouncil.gov.uk



Name: Cllr Ann Johnstone (Deputy Chairman)
Address: 3 Lakeside Road, Lymm, WA13 0QE
Telephone: 01925 755554
Email: ajohnstone@lymmparishcouncil.gov.uk



Name: Cllr Chris East
Address: 7 Newfield Court, Lymm WA13 9QU
Telephone: 07743 489329
Email: ceast@lymmparishcouncil.gov.uk



Name: Cllr Graham Gowland
Address: 32 Wychwood Avenue, Lymm, WA13 0NE
Telephone: 01925 751599
Email: ggowland@lymmparishcouncil.gov.uk



Name: Cllr Ian Marks MBE
Address: 80a Whitbarrow Road, Lymm WA13 9BA
Telephone: 01925 753051
Email: imarks@lymmparishcouncil.gov.uk



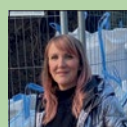
Name: Cllr Tim Martland
Address: [Address not provided]
Telephone: 07759 078412
Email: tmartland@lymmparishcouncil.gov.uk



Name: Cllr Karen Rurlander
Address: [Address not provided]
Telephone: 07717 855697
Email: krurlander@lymmparishcouncil.gov.uk



Name: Cllr Ben Selwood
Address: 44 The Crescent, Lymm WA13 0JY
Telephone: 01925 752624
Email: bselwood@lymmparishcouncil.gov.uk



Name: Cllr Sally Sharma
Address: 5 Baycliffe, Lymm WA13 0QF
Telephone: 07960 383148
Email: ssharma@lymmparishcouncil.gov.uk



Name: Cllr Julia Stansfield
Address: 46 Sandy Lane, Lymm WA13 9HQ
Telephone: 01925 758809 / 07928 848256
Email: jstansfield@lymmparishcouncil.gov.uk



Name: Cllr Stephen Towndrow
Address: [Address not provided]
Telephone: 01925 757560
Email: stowndrow@lymmparishcouncil.gov.uk

Plan to transform former village bank into bar restaurant and retail units

AN ambitious plan to transform the former Barclays Bank at Lymm into retail units and a bar restaurant has been submitted to Warrington planners.

The proposed change of use of the bank at 4-6 Eagle Brow, which has been empty for several years, involves external alterations to form ground-floor retail units and 1st-floor bar/restaurant with 1st-floor rear extension.

The plan, which sits within the Lymm Village Conservation Area, has been submitted by applicant Corinna Nuttall.

The building sits in a prominent location on the corner of Eagle Brow and Bridgewater Street in the centre of the Lymm village conservation area. The immediate area is predominantly made up of retail units of various uses due to the site's location within the centre of Lymm village.

A Heritage Statement prepared by architects Randle White says the nature of the proposal is internal and external alterations of this vacant former bank building at 4 Eagle Brow, Lymm. At the ground floor the existing open plan layout will be broken up to form three separate retail units whilst at the first floor an open plan bar/restaurant space will be formed. A modest 1st-floor extension has been

proposed towards the rear of the property which will not be able to be viewed from either Eagle Brow or Bridgewater Street.

As the original building at 4 Eagle Brow was demolished in the mid-1970s and replaced with the existing building with little to no historical interest in the building.

The applicant wishes to reintroduce many of the architectural features of the original bank building such as its timber window surrounds and traditional sash windows which were lost

following the building's demolition in the mid-1970s.

The building's significance in terms of its group interest and setting contribution will be in essence improved by the proposed changes and have no perceived harm to the Lymm Village Conservation area.

This application hopes to secure the future of the building in the form of an alternative and sustainable use. In the balanced planning judgement that the application requires, it is therefore concluded that the proposal satisfied the planning guidance on undesignated assets and therefore the application should receive approval.



Less is More!

- Get paid quicker – Improving your cash flow
- Less time spent sorting old receipts – Free up countless hours each week.
- Less jargon and more proactive advice – Watch your business flourish.

Don't let these issues hold your business back.

To find out how we can remove your financial headaches call us:

01925 761600

or visit us at:

www.stylesandco.co.uk

styles and co
a xeladin company



**E SMITH AND SON
PLANT CENTRE**

WWW.LYMMPLANTS.CO.UK

Over 60 years in Lymm and still growing!

**THE NURSERY, BOOTHS LANE, LYMM, WA13 0PF
01925 752459**

PRIMROSES! PRIMROSES! PRIMROSES!
many varieties, many sizes, many colours

**Also available: seeds, compost, and pots
Perennials, Shrubs and Trees
Gift Vouchers Available**

**Seasonal Bedding, Planters and Hanging Baskets
OPEN ALL YEAR FOR YEAR ROUND COLOUR**

OPEN 7 DAYS: MONDAY TO SATURDAY 10AM - 4PM | SUNDAY 11AM - 3PM



How well do you

Who are we?

Lymm Sanctuary Hub (LSH) was established as a charity in 2019 in response to calls from the community to support isolated or vulnerable local residents. LSH occupies the annexe building of Lymm Library. Lymm Business Centre and the Sanctuary Café are Hub subsidiaries. The business centre offers hotdesking, office hire, event/meeting rooms, and services including printing. Profits pass into LSH community projects. The Sanctuary Café serves the community and hosts local groups and events.



Featured left to right: Sanah Bukhari, Alex Langley, Anna Leaver, Joyce Murdoch, Richard Pearce, Simon Fawcett, Kirsty James, Alison Summersfield, Sue Eadon, Ken Rogers.
Picture Credit: Andrew Collier.

Cost of Living Support

As the cost of living crisis continues, many households will be facing sharp rises in their energy bills in April this year when the current Energy Price Guarantee is replaced and the £400 rebate is discontinued. For an average household, the increase is forecast to be £900 per year but it will be more for higher energy users.

The Hub, along with local environmental partners, will offer events and services to support anyone who is worried about the cost of heating their home and rising food prices and living essentials. At the 'LEAF tackles the Energy Crisis' drop-in sessions on 28 January (10.00-12.30) and 4 February (12.30-16.00), you will get free, impartial information and advice on:

- Cutting your energy bills;
- Navigating financial support and grants;
- No or low-cost ways to improve home energy efficiency;
- Investing in insulation, solar panels and heat pumps.

The advice sessions are being supported by The Big Energy Saving Network, a national programme delivered by specially trained volunteers through a local partnership with Lymm Community Energy and Warrington Community Energy.

What does the Hub do?

Since 2020, LSH has developed a range of projects to serve local people which gained it the 2022 Community Initiative Award at the Warrington Business Awards. Thanks goes to those who manage and support our projects – from Trustees and project leaders to many wonderful volunteers. LSH has also been supported by Lymm Parish Council, The National Lottery and Cheshire Community Foundation as well as by donations from local businesses, organisations and individuals.

LSH runs its own projects but also provides admin, marketing and financial support to other community projects, including: Leave No One Behind in Lymm, Lymm Environment Action Forum and local Ukraine support groups. New projects for 2023 include:

- Befriending Scheme – offering company to anyone who is isolated, elderly, new to the village, living alone or socially anxious;
- Lymm PaC - a support group for parents and carers of children with special needs; and
- Activities related to the cost of living crisis, including supporting LEAF and Warm Spaces.





Lymm Environment Action Forum
"LET'S ALL TURN OVER A NEW LEAF"

LEAF tackles the Energy Crisis

10.00-12.30, Saturday 28 January 2023
12.30-16.00, Saturday 4 February 2023
 Lymm Sanctuary Hub, Davies Way, Lymm, WA13 0QW

With the current high and volatile energy prices, we're offering free, impartial information & advice on:

Keeping warm this winter
Cutting your energy bills
Improving energy efficiency
Accessing grants and financial support
Investing in insulation, solar panels and heat pumps

Visit a drop-in advice session
or contact us to book a consultation
01925 737950 / eco@lymmshsanctuaryhub.co.uk

LEAF aims to unify Lymm's environmental groups and encourage residents to achieve net zero carbon emissions within the next 10 years



www.lymmenvironmentactionforum.co.uk
www.facebook.com/LymmEnvironmentActionForum

know your Hub?



Lymm Community Garden

LSH obtained permission late 2022 to manage the unused garden area beside Lymm Library. Work began immediately to create an exciting community space incorporating memorial, sensory and educational content. The first stage saw LSH support and provide a home to the 'Lymm Tree'. The Tree will evolve with new themes and be part of further community projects and wellbeing activities that are planned for the garden space. For more details and to support the garden project, visit: www.tinyurl.com/lymm-garden

What's on

Single Hub Events

LEAF Energy Crisis Drop-in Sessions
Sat 28 Jan am / Sat 4 Feb pm
LEAF Climate Change Talks
17 Jan, 1 Feb, 8 Mar, 7.30-9pm
Price comparison websites tutorial
Thurs 26 Jan, 2-4pm

Recurring Hub Events

Digital Cafe - Thurs pm
Digital Topic Tutorials - 4th Thurs pm
Memory Cafe - 2nd & 4th Wed
Singing for the Brain - 1st & 3rd Wed

Recurring Partner Groups

NHS Health Visitors - Mon/Wed pm
Reading Group - 1st Tues pm
Cheshire Wellness - Mon eve
Lymm Sewcials - 1st Thurs
Craft Group - Fri pm
U3A Photography - 2nd Thurs
Languages & KS2 Tutoring - enquire

"An award-winning Lymm charity committed to supporting local people and projects"

Singing for the Brain

1.30-2.30pm, 1st & 3rd Wednesdays
United Reformed Church
Brookfield Road, Lymm, WA13 0QL

Singing for the Brain is an hour of singing and fun for anyone living with memory loss plus their families and carers

Led by a local singer/musician trained by the Alzheimer's Society, our Winter Warmer sessions are free until the end of February 2023.

Delivered with the support of:



Memory Café

1.30-3pm, 2nd & 4th Wednesdays
United Reformed Church
Brookfield Road, Lymm, WA13 0QL

For anyone living with memory loss including families/carers

Attend for fun, friendship (and cake!). Free of charge (donations welcome).

To book, call 01925 737950 or email admin@lymmsanctuaryhub.co.uk



Affordable Counselling Service

Free, weekly drop-in IT support sessions

2.30-5.30pm, Thursdays
Lymm Library

A free service for people to learn basic computer and digital skills in order to better understand and use modern technology

Professional, private counselling appointments

By arrangement
Lymm Sanctuary Hub

A counselling service for people who cannot afford full commercial rates
£10 per person per session
To book, call 07474 655837

Support the Hub

Projects rely on volunteer support. If you can spare a couple of hours a week, please get in touch.

To donate to the Hub, scan the code



Contact the Hub

Lymm Sanctuary Hub & Business Centre
Davies Way, Lymm, WA13 0QW
01925 737950



Newsletter via QR code or at www.eepurl.com/h-pl8T



[lymmsanctuaryhub](https://www.facebook.com/lymmsanctuaryhub)
[lymmbusinesscentre](https://www.facebook.com/lymmbusinesscentre)



lymmsanctuaryhub.co.uk
lymmbusinesscentre.co.uk

WARM WELCOME SPACE

FREE • WARM • WELCOMING • SAFE

visit www.warmwelcome.co.uk

Need a hot drink and warm welcome?

MONDAY	TUESDAY	WEDNESDAY	THURSDAY	FRIDAY	WEEKENDS
Lymm Baptist Church 10.00-15.30	The Sanctuary Cafe 11.00-15.00	Star Inn 15.00-23.30	Lymm Youth & Community Centre 9.30-12.30	Lymm Methodist Church 10.00-15.00	Star Inn 13.00-23.30
Lymm Library & Sanctuary Hub 14.00-16.00	Star Inn 15.00-23.30		Star Inn 15.00-23.30	Star Inn 15.00-24.00	
Star Inn 15.00-23.30					

The Warm Welcome Campaign exists to support the community response to the cost-of-living crisis

For more details, contact the venue or call 01925 737950

Lymm Rotary santa float continues to support the local community

THANKS to your generosity, Lymm Rotary have been able to support many local community groups, many of who helped with the annual Christmas Float collections.

If anyone wishes to join Lymm Rotary Club, support them or know an organisation worthy of their support, please contact Mike Hall 01925 919053 email: mikhall13@icloud.com

They meet on the second and fourth Wednesday of each month at 8pm at Warburton Parish Rooms.

All money collected on the Float goes to local organisations.

In the past five years, they have supported the following Lymm based organisations:

3 care Homes (Brookfield, Keate House, Cheshire Grange), Senior Citizens (party, afternoon teas, chocolates), Pre-school & Playgroups (Statham, Oughtrington, Cherry Blossom), Lymm Sanctuary Café, Primary Schools (Statham, Oughtrington, Cherry Tree, Thelwall, Ravenbank & Little Bollington).

Lymm Youth & Community Centre, Gendai Martial Arts, Kabuki Research, Lymm District Guides, St Mary's and St Peter's Churches, 3rd & 4th Lymm District Scouts, Ukrainian Refugees.

Lymm High School PTA (Young Musician, Youth Speaks, Aritwin, Sports Tour), Lymm Memory Club, Lymm Heritage Centre, Lymm May Queen, Lymm Dickensian Day, Lymm Children in Need, Lymm Cancer Research, Lymm Royal British Legion, Lymm Oughtrington Park Cricket Club, The Children's Society, Sarcoma UK, Warrington Youth Orchestra, Royal Agricultural Benevolent Institution, Cheshire Agricultural Society Chaplaincy.

They also liaised with local schools to make Christmas cards for the Care Home residents.

Sainsbury's Warrington kindly allow them to collect at their store and from part of these proceeds, the club have supported the following Warrington based organisations:

St Rocco's Hospice, Warrington Foodbank, Room at the Inn Salvation Army, Music & Memory WODAC (Warrington Open Door At Christmas), Warrington Wolves Charity, Shelter Boxes, Warrington Disability Partnership, Merseyside & Cheshire Blood Bikes, Warrington Life Time Trust Clatterbridge Cancer Clinic, Brainwave, Tree of Hope Petty Pool Trust, Disaster Aid, The Christie.

Over many years, Lymm Rotarians have been involved individually with helping the community. Members helped build Lymm Youth and Community Centre, Lymm Grammar School swimming pool, the Royal British Legion Club (now the Heritage Centre), Constructed the disabled fishing access at Lymm Dam, planted trees around Lymm Dam, secured the building for Lymm Youth & Community Centre to continue to use, educated an African child, helped decorate the Children's Adventure Farm Trust when it started and provided a 'picnic boat' for them, the North West Air Ambulance, Cheshire Agriculture Society Chaplaincy.

Members also serve on other local voluntary groups, like Low Carbon Lymm, Royal British Legion Poppy Appeal, School Governors, Visit residents of Care homes and Housebound, Lymm Dickensian, Litter Picking and removal of Toxic weeds from the roadside around our Village. They also donated and maintain the Notice Board in the Village. The club supplied and erected the first Christmas Tree at Lymm Cross in 1952.

If you would like to know more about any of the organisations they have helped, please check the website www.rotary-ribi.org/clubs/homepage.php?ClubID=296 or speak to a member of our Club.



Lymm Truckwash boss blames bad weather and council planners for traffic jams

THE boss of Lymm Truckwash has blamed bad weather and council planners for the traffic jams impacting the A50 at one of the busiest times of the year for the haulage industry.

Local residents and motorists have been complaining about lengthy queues of HGVs attempting to access Lymm Truckwash near the Poplars Service Station.

Local Cllr Graham Gowland commented: "I'm regularly contacted by locals who are stuck in traffic jams caused by lorries queuing for the new truckwash. They block the roundabouts and often end up making it impossible to pass. We log the issue with the police and council, who do attend to do what they can, but we can't have impacts like this from a business. I'm sure highways will have issues with any further development of this site."

But Laura Cardwell, Managing Director of Lymm Truckwash,

responded: "We are extremely aware that the numbers of trucks coming through Lymm Truckwash are higher than usual and we are doing our absolute best to get through the demand as quickly and safely as possible."

"The recent freezing temperatures meant that we were not able to open last week and are consequently working our way through the backlog of trucks that are required by law to be kept clean from a safety and visibility perspective. Added to this, the salt and grit spread on the roads means they are very dirty and take a couple of minutes longer per truck to wash. Frost and snow can corrode if not removed and therefore it is vital to get the salt off the trucks which are very valuable assets."

"Safety is always at the forefront of our minds. We submitted a planning application last year to help double our on-site queuing

and despite support from Highways England and the police, this was unfortunately refused by local residents, the Parish Council and Warrington Council. We have also tried to engage several times with our neighbours, the fire service, but they do not respond."

"Many roads at this time of the year are busy – Cheshire Oaks queues onto the M53 and the

Trafford Centre the M62 – the trucks waiting to be washed at the truckwash have the public's Christmas and day to day goods on."

"Truck drivers are the workforce behind all our consumer and company goods, and more public support needs to be shown to this industry. Without them there is no Christmas Day."



Don't miss these adult courses starting this February

If the last two years have taught us anything, it's that there is no time like the present. If you've been thinking about retraining, upskilling or simply taking up a new hobby - why wait any longer?

Warrington & Vale Royal College has a number of exciting courses starting this month that are the perfect place to start.

Courses starting in February include Access to HE: Health Professionals, Next Steps in Drawing & Sketching, Level 2 Art & Design, Digital Basics Masterclasses, Level 2 Barbering, LVL Lash Lift, Introduction to Creative Writing, and many more.

Whether you are looking to improve your personal development, secure a promotion, or just learn something new for the fun of it - there is a course to help you meet your goals.

FREE* Adult Courses

Warrington & Vale Royal College don't want money worries to be a barrier to education.

That's why our wide range of adult community learning courses are being offered completely free of charge to those who qualify. As well as this, the college is also offering free functional skills courses in both maths and English. These courses are the perfect solution for anybody looking to develop their current knowledge and skills.

Visit: wvr.ac.uk for more information.

*Terms & conditions apply.



wvr.ac.uk/adults
01925 494 400



Warrington
& Vale Royal
College



SCHOOL LEAVER & ADULT OPEN EVENING

Tuesday 7th February
Warrington campus, 5.00pm - 8.00pm

Do you want to see what college life is like?

Open Evenings are a great way to explore our Warrington campus, whether you are a year 11 student, or an adult looking find out more about our full-time, part-time, higher education, professional & short courses.

You will get the chance to chat with current students, meet our industry-experienced tutors and tour our amazing facilities.

Register online: wvr.ac.uk/openevenings



Warrington
& Vale Royal
College





From £895*
for a fully fitted electric garage door.

Gotta get a Garolla.

Trustpilot
4.8 out of 5 | Over 3,000+ reviews

WHAT'S INCLUDED WITH EVERY DOOR:

- EXPERT MEASURING & FITTING
- 2 REMOTE CONTROLS
- ACOUSTIC & THERMAL INSULATION
- FREE DISPOSAL OF YOUR OLD DOOR
- AVAILABLE IN 21 COLOURS

Garolla garage doors are expertly made to measure in our own UK factories, they're strong and solidly built. The electric Garolla door rolls up vertically, taking up only 8 inches inside your garage, maximising valuable space.

Give us a call today and we'll come and measure up completely **FREE** of charge.

GAROLLA
ROLLER SHUTTER DOORS

www.garolla.co.uk

CALL US TODAY ON:
01925 205 009
MOBILE:
07537 149 128

LINES OPEN 7 DAYS A WEEK

*Offer valid for openings up to 2.4m wide & including 2 remote controls, 55mm white slats, internal manual override.

EXCHANGE YOUR GOLD AND SILVER FOR INSTANT CASH

All items of jewellery accepted

Did you know...?
We accept silver jewellery, cutlery, tea sets, spoons, cigarette cases, candlesticks, trophies, trays, medals, coins and pocket watches.

**ROLEX WATCHES WANTED!
ANY CONDITION**

Open: Tuesday-Saturday: 10am - 5.30pm
1 London Road, Stockton Heath
(First floor entrance on Fairfield Road)
07544 486 621

CHESHIRE GOLD & SILVER EXCHANGE
GOLD & SILVER BULLION DEALER

Need IT Support at Home?

- Skilled and Friendly Technicians
- PC and Laptop Support
- Home Visit or Remote Dial-in
- Antivirus/Malware Check
- Unlimited Support Time
- Equipment Supplied: Laptops, PCs, Printers & Bespoke Builds

aspire Computers Ltd

Call our Team: 01925 251143
sales@aspire-computers.com | www.aspire-computers.com

MBEs awarded in King's New Year Honours to two Lymm residents



MBEs have been awarded in the King's first New Year's Honours List to people in the Warrington area for services to education, services to older people and services to the wider community - including two from Lymm.

Retired nursery boss Margaret King from Lymm, Martin Jones, the CEO of Warrington-based Home Instead and former Lymm Parish Council Chairman Geoff Hawley, have all received MBEs.

Margaret has been involved in education and community service since entering the teaching profession in 1970. Margaret created the first Modern Educational Dance GCSE Curriculum in the UK in 1972. After moving to Lymm in the mid-80s Margaret set up Lymm Dance in 1987 and also assisted in local primary school musicals as a volunteer.

In 1991 she set up The Rosebank Centre, which had previously been a children's home on Pepper Street, as a nursery school with dance, movement and outdoor play as key elements in child development. This was expanded with a breakfast and after-school club for primary school children. This was followed in 2004 when she set up The Lakes Centre nursery in Orford to bring her skills and ethos to a wider group of children. This was a joint initiative with Warrington Borough Council and was one of the first National Neighbourhood Nurseries in the country with a focus on community support for parents and children. And in 2008 the nursery in Lymm was expanded further with a purpose-built "Naturegarten" nursery within the grounds of Ravenbank Community Primary School. The Scandinavian log-cabin was one of the first "forest schools" in the country and was based upon extensive use of outdoors and children learning in the natural environment. It enabled The Rosebank Centre to focus on childcare for babies and children up to 4 years old who then moved to Naturegarten for children between 4 and 10 years of age.

Throughout this time Margaret worked with Warrington Borough Council to provide excellence in the care, development and education of thousands of children in Lymm and Warrington. She was also active in other areas including Warrington Early Years Partnership, Warrington Independent Nursery

Network, a governor at Sandy Lane Nursery and a Voluntary Councillor for Childline Manchester.

In 2018, Margaret set up "Crafty Crafters of Lymm" co-ordinating a group of volunteers who would sew drain bags and under-arm cushions for patients undergoing mastectomy surgery at Warrington and Halton hospitals. Her group of Crafty Crafters have provided over a thousand such items, all custom-made in interesting fabric designs that patients can select from rather than use the standard plain NHS products.

Margaret said: "I am delighted to receive this honour. It was totally unexpected. Over the years I have simply done what I thought was the right thing to do and have been helped by so many staff and colleagues along the way."

Her husband Rod, who received an MBE in 2013 for Services to Road Safety.

Meanwhile the CEO of Warrington-based home care franchise business, Home Instead, Martin Jones, has been awarded an MBE for services to older people.

During his time working in the care sector at Home Instead, Martin has been a keen advocate of home care and its role within the health and social care ecosystem which allows older people to lead independent lives in their own homes. He has also championed the role of care workers, helping to attract more people to consider a career in care.

Meanwhile, retired Lymm dentist Geoff Hawley from Lymm was formerly the chairman of Lymm Parish Council, and has been recognised for services to the wider community of Cheshire.

A Deputy Lord lieutenant, he was deputy chairman of the parish council in 2018/19, where he was also as chairman of the Allotments Committee, before being elected as chairman of the parish council in 2019, serving until 2021.

Football coach aims to run 5k a day in 2023 to raise funds for powerchair club



Lymm twins Oscar and Seb Spink who play for Sale United Powerchair Football Club.

LYMM-based football coach Tom Dore is planning to run 5k a day through 2023 to help raise funds for a powerchair football club.

Tom, who runs Dynamic Sports Coaching based in Lymm is running 5km every single day of the 2023 year in support of Sale United Powerchair Football Club.

His efforts will help benefit the likes of identical twins Oscar and Sebastian Spink, who both suffer from a rare muscle-wasting condition. The boys from Lymm were diagnosed with fascioscapulohumeral dystrophy (FSHD) in 2019 – a rare, progressive muscle-wasting condition that slowly destroys muscle, making any physical movement difficult, and there is currently no cure or treatment for the condition.

Tom said: "My aim is to raise as much money as possible to try and either buy a new powerchair for the club or donate the money to them so they could buy one in the future. They are an amazing club that offers powerchair football to all ages and disabilities.

"Unfortunately due to the cost of these chairs, it means the players at

the club have to share these chairs during training/ matches. This is a lot more difficult than it sounds as some of the players need to be hoisted in and out of the chairs and with each change of player into the chair the setting also has to be altered, all in all, the players lose playing time and it massively limits the amount of time they get in the chair.

"I think sport should be inclusive and accessible to everyone! I hope that the money I raise can help contribute towards that statement.

Tom added: "I've chosen Sale United Powerchair Football team, we have some of our local Lymm players involved in the team who have to travel to Sale as it the closest PowerChair club!

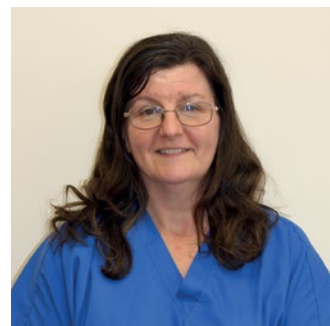
"Unfortunately due to the chairs being expensive they are out of reach for a lot of the families involved, meaning players have to share the chairs.

Donations can be made via www.gofundme.com/f/sale-united-powerchair-football-club



Your pet questions answered

By Dr Diane Wilshaw
Lymm Veterinary Surgery



Q: How often should my dog visit their vet?

A: If your dog is a puppy or a senior, they will need more trips to the vet.

If you have a puppy, they will need to have their vaccinations and they may be more likely to pick up illnesses due to having an immature immune system. If your dog is older, and has an underlying condition, they will need medication reviews which need to be done at least every 6 months. If your dog is healthy with no underlying health issues, you should have an annual check-up each year, to make sure they are fit and healthy.

Q: How do I make sure my cat is eating a balanced diet? I find it overwhelming finding suitable food for her because there is so much choice in the supermarket.

A: When choosing pet food, you should use a reputable brand that you feel fits your cat's needs. If your cat has an underlying condition that needs a specialist diet, your vet will be able to give you advice on the most suitable food for your pet.

Q: How often should I give my rabbit a bath?

A: The short answer is, as little as possible. If you bathe your bunny regularly you are stripping their coat of its natural oils which help to keep them warm and clean. Rabbits are also susceptible to pneumonia and other life-threatening diseases which could be triggered by being cold after a bath, so it is best to give them a spot clean and only if they really need it!

Q: I'm getting a kitten! What is the first thing I should do when I bring her home?

A: Firstly, she should have a comfy, quiet place to settle into her new home. You should ask the place you are buying her from about the food she is currently fed, and the litter set up they currently use so that your kitten is familiar with it. You should also make sure that your kitten has had its relevant vaccinations and has been wormed and make an appointment with your vet to get a microchip put in place and arrange neutering if needed.

Q: How do I know if my guinea pig's teeth are overgrown?

A: Guinea pigs are constantly gnawing on food, hay, or grass which helps keep their teeth in shape. If they don't gnaw enough, their teeth will become overgrown which will lead to dental issues. Symptoms of overgrown teeth are decreased appetite, sore mouth, and long teeth. If you think your guinea pig has overgrown teeth it is very important to take them to the vet so that they can be treated otherwise they run the risk of developing other issues further down the line.

Give your kitten the best start in life with our

Kitten Pack



Our Kitten Pack includes:

- Initial Cat Vaccination Course
- Microchip, and database registration
- 4 weeks free insurance

- One month worm and flea treatments
- Discount vouchers
- Cat care information book
- Sticker



Lymm
Veterinary
Surgery

www.willowsvetgroup.co.uk

ALL FOR
£60.00

TEL: 01925 752721

10 Booths Hill Road, Lymm, Cheshire WA13 0DL



@LymmVets



@LymmVets

Death of Lymm Town Crier Peter Powell

LYMM'S hugely popular Town Crier Peter Powell has sadly died just a month after leading the village's annual Dickensian Festival for a final time.

Well-known in the village for all his community work, he was made a Freeman of Lymm at the event in recognition of his outstanding achievements and dedication spanning many years as Town Crier.

He died peacefully at home with family by his side.

Paying tribute Warrington South MP Andy Carter said: "Peter was a true gentleman, a wonderful supporter of local causes, a very kind, thoughtful and interesting man who gave his time, experience and wisdom so generously. Most of all he was a brilliant Town Crier, representing not just for Lymm but also Altrincham at so many events. I'm so sorry to hear about his passing and I send my condolences to his family and friends."

Meanwhile, former fellow parish Cllr Kath Buckley, who worked closely with Peter for many years on various events, including Lymm May Queen said: "He was a wonderful person and would help anyone. He was marvellous at Lymm May Queen and was so kind and generous – everyone loved him. While everyone knew who he was in his Town Crier uniform he did so much more behind the scenes."

"He was a great mentor for lots of people giving help and advice – he was very generous with his time. When I first started on the parish council he was very helpful."

During his career, Peter, aged 74, travelled the world working for Japanese Tractor manufacturers Iseki, but always found time to return to Lymm to help lead events like Lymm Dickensian, Lymm May Queen, Lymm Transport Day, Lymm Duck Race and many more. He also travelled the world representing the village at Town Crier championships.

He was also Chair of the Lymm Clothing Charity for many years and worked behind the scenes on many community projects.

While his main focus was Lymm, he also ventured out of the village to support and promote many other community events, including the annual Disability Awareness Day.

Despite failing health, he continued, to support events, with Lymm Dickensian being his farewell appearance, as he handed over his bell to grandson AJ Powell.

His funeral will take place at St Peter's Church, Oughtrington on Friday, February 10 at 12 noon.



When Pelé Came to Lymm exhibition kicks off!

FOLLOWING the recent news of the sad passing of footballing legend Pelé a special exhibition commemorating his stay in Lymm during the 1966 World Cup kicked off in Lymm during January.

The people of Lymm have a very special reason to mourn his passing as for two weeks in July 1966 the village was alive with excitement as the Brazil team, including Pelé, made Lymm their home for the World Cup.

These were not the days of remote, secure training camps. The team, who were staying at the Lymm Hotel and adjacent houses, signed autographs, played with the children and even visited local people in their homes. The people of Lymm in return took the young team to their hearts. There was an almost constant crowd outside the hotel, all hoping to catch a glimpse of the players or maybe even get a photograph. A lucky few can even claim to have joined a training session or had a kickabout with

Pelé and the rest of the squad.

Lymm never forgot its South American visitors and in 2016 the Lymm Hotel and newly formed Lymm Heritage Centre combined to stage "Brazilymm 66" to mark the 50th anniversary of this momentous event in the village's history. It turned into a huge success attracting national media attention. The special guest on the opening night of the exhibition was Warrington's own Roger Hunt, a member of the England team who went on to win the World Cup that year.

Just three years later the Lymm Hotel was pulled down to make way for a new development. Sadly in September 2021 Roger Hunt passed away and now the world has lost Pelé too.

A small temporary exhibition at Lymm Heritage Centre "When Pelé Came to Lymm" is a final opportunity for the people of Lymm to share memories and say farewell to their most famous guest.

The exhibition features over a hundred photographs and reminiscences, a collection of 1966 World Cup memorabilia and a video compilation that tells the story of the visit from beginning to end.

It's the chance to say a final, respectful farewell to Lymm's most unforgettable guest. Lymm Heritage Centre is open Thursday to Sunday 12-4 every week.

"When Pelé Came to Lymm" will be on display throughout January.

More information at www.lymmhic.co.uk



Established 1878

John Burrows & Sons
Fourth Generation Independent Family
Funeral Directors

Friendly & Professional Service
Day or Night ~ J. Tandy

The Old Smithy, Mill Lane, Lymm,
WA13 9SE Tel: (01925) 752501

Golden Charter
Funeral Plans

www.johnburrowsandsons.co.uk

Obituary

Sue Allison

THE funeral has taken place of Sue Allison, of Higher Lane, Lymm.

Sue passed away in hospital in November 2022.

Her ashes have been buried in the family garden.

Funeral arrangements were by John Burrows and Sons of Lymm.

CLASSIFIED

Call 01925 631592 to advertise

ACCOUNTANCY & BOOKKEEPING

BOOKKEEPER/ACCOUNTANT. Licensed for maintaining financial records, VAT Returns, Payroll Service, Management Accounts, SAGE Software Consultancy. **Contact: 07815 617914.** (G*)

CARPET CLEANING

A1 STAINBUSTERS. A Warrington company cleaning carpets, hard floors, Upholstery (Leather + fabric) and curtains in situ. FREE quotes for domestic and commercial. Approved carpet cleaners for Hancock and Woods for over 10 years. **Call John on 07765 314080** (J6/22)

SIMPLY THE BEST CARPET CLEAN YOU will ever have. Cleaners UK Ltd. Est over 35yrs. Have your carpets & sofas beautifully deep cleaned leaving them fresh smelling & colour restored. Latest & best methods. Dry/steam. Leather cleaning, oriental rug specialist. Professional, reliable & affordable. **For more info call Neil Riley on 01925 264989 / 07831 336060 www.cleaners-uk.net** (J4/23)

CAR SALES

PARKVIEW CAR SALES

We buy and sell QUALITY CARS

Best price paid

Telephone Peter on 01925 575737 / 07957 545479

23 Padgate Lane
Padgate, Warrington
Cheshire, WA1 3RS (G*)

CHILD CARE

OFSTED REGISTERED CHILDMINDER
Lives close to Ravenbank School. Full time or Part time placements available. Pick up and drop off from Ravenbank School or Rosebank Nursery. From ages 0-12 years. **For more information contact Carole on 07731 089656 or leave a message on 01925 755108** (J4/23)

CLEANING SERVICES

arleys angels

- Spring Clean Specialists
- Presenting your home for sale
- Moving house
- After building work cleans

01925 266834
... because you're worth it! (G*)

CLEANING SERVICES

SIMPLY THE BEST CARPET CLEAN YOU will ever have. Cleaners UK Ltd. Est over 35yrs. Have your carpets & sofas beautifully deep cleaned leaving them fresh smelling & colour restored. Latest & best methods. Dry/steam. Leather cleaning, oriental rug specialist. Professional, reliable & affordable. **For more info call Neil Riley on 01925 264989 / 07831 336060 www.cleaners-uk.net** (J4/23)

ELECTRICAL CONTRACTOR

TRUST PROPERTY ELECTRICAL SERVICES. NICEIC Part P Approved Contractor. All Electrical work undertaken. Inspection & Testing & PAT Testing. All work certified & guaranteed. **Call Tim on 07754409906 or 01925 601055** (G12/22)

GARDENING SERVICES

• All aspects of tree surgery
• Stump grinding
• Waste removal
• Locally based
• Free quotation

Beechwood Industries
www.beechwoodindustries.co.uk
01925 860544 (G*)

MORTGAGES

TALKING MORTGAGES - INDEPENDENT MORTGAGE ADVICE.
For local, impartial and professional advice on all aspects of mortgages contact Darren Simpson on **07708 975122** (G8/21)

PHOTOGRAPHY

FAMILY & PET PORTRAIT PHOTOGRAPHY
Lymm based Andrew Collier Photography specialises in family and pet portrait photography using Lymm locations as a backdrop. Personal service with beautifully made frames and albums. **Call Andrew on 01925 471091 or visit www.andrewcollierphotography.co.uk** (G4/22)

PAYROLL

WHY TRY TO BE A PAYE EXPERT?
Watkinson Black can provide a cost effective payroll service, releasing you to concentrate on your business. **For further details please phone: 01925 413210 or e-mail: info@warringtonaccountants.co.uk** (G*)

RE-UPHOLSTERY

Orchard Soft Furnishings

RE-UPHOLSTERY
CURTAINS • BLINDS

FREE MEASURING & FITTING

TEL: (01925) 756388
www.orchardsoftfurnishings.co.uk (G*)

TAXI / PRIVATE HIRE

Horn's

Airport Transfer & Taxi Specialists
CALL MARTYN: 01925 751761
MOBILE: 07881 786250 (G9/22)

TYRES

EVERGREEN Centre of Excellence

Express
Mobile Tyres

Local Family Business. Est 1997
01925 810000
www.expresstyres.co.uk
Order Online Today!

Branded & Budget Tyres
Cars, Vans, 4x4's, Caravans
Light Commercial
& Performance Vehicles

The tyre service that comes to you at home or your place of work

No Call Out Charge!

BRIDGESTONE MICHELIN
GOODYEAR Continental (G*)

To advertise in the classified section from as little as £15+vat

Call us now on 01925 631592

Obituary Notices

While Obituary notices are published free of charge, due to pressures on space, we can never guarantee they will be used and there can also be a delay of several months.

If you would like to guarantee a notice to appear in the next available issue, these can be purchased for £75 plus VAT which helps towards the running costs of your free community magazine.

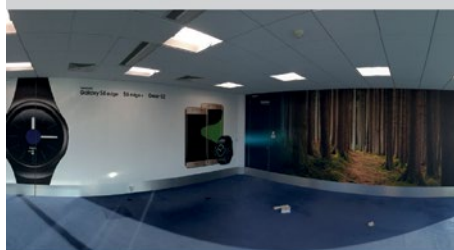
To place an obituary notice or any other public/family notice please email info@lymmlife.co.uk

Your notice will appear the same size as this advertisement.

twentyfour seven
design & print ltd

We supply and fit all types of signage: self adhesive graphics, glass, metal, wood, perspex, foamex plastic.

Call or email for a free site visit.



01925240247 info@247print.net www.247print.net

The North West's leading supplier of concrete

www.barrowmixconcrete.com

BARROW - MIX

1984-2023
39TH YEAR
ANNIVERSARY



FREE SITE SURVEY

6 DAY SERVICE

All areas covered

Free barrowing service

Only pay for what you lay

From half a cubic metre upwards

Levelling/laying service if required

(minimum charge)

We can supply

C25, C30, C35 Fibre Reinforced



Call NOW for a FREE quotation
01565 734111 or 01942 722629