

Lymm Life

Magazine

SUE 281 | DECEMBER 2022

FREE TO 5000 HOMES



urban

BUILDING PROJECTS LTD

Extension &
Building Renovation
Specialists

Tel: 01925 730888

www.urbanbuildingprojects.co.uk



LYMM
PARISH
COUNCIL

Approved by Lymm Parish
Council as the official
magazine for Lymm



CJ ROUND
LANDSCAPES

Landscaping - Design - Patios
Decking - Fencing - Walls

01925 752468

www.cjroundlandscapes.co.uk
facebook.com/cjroundlandscapes

Maskell



Josephson

THE OPTOMETRISTS

Independent eye-care for all the family
since 1983

0161 941 6517

www.maskelloptometrists.com



Burford Lane Vets
Your practice for life



Register your pet for free
Call 01925 949 949

We're off to see the Wizard!

Page 3

Regular news updates at www.warrington-worldwide.co.uk

Editor
Gary Skentelbery

Production
James Bryan

Advertising
James Balme
Telephone
01925 631592

Editorial
01925 623633

Email
info@lymmmlife.co.uk

Websites
www.lymmmlife.co.uk
www.culchethlife.com
www.frodshamlife.co.uk
www.warrington-worldwide.co.uk
www.warrington.tv

Address
New Media Centre
Old Road Warrington
WA4 1AT

Lymm Life is published monthly by Orbit News Ltd.

The contents of this magazine are fully protected by copyright and nothing may be reprinted or reproduced without prior permission of the publishers.

The publishers are not liable for any statement made or opinion expressed by third parties in this publication.

Printed by TwentyFourSeven

Editor's Comment



CHRISTMAS is often described as the season of goodwill – but there appeared to be little goodwill when Lymm Parish Council took the decision to move Carols from The Cross from the traditional Christmas Eve slot, which falls on a Saturday this year, to Friday the 23rd.

The decision, taken due to health and safety issues and the use of contractors who couldn't staff the event on Christmas Eve, met with an outpouring of outrage on social media.

Two extra-ordinary meetings later, and a lot of upset and distress, the parish council has now decided to revert back to the traditional Christmas Eve, after volunteers from within the community, came forward to offer their services.

It is a sad state of affairs that such a wonderful event has caused

so much upset and hopefully lessons have been learned moving forward.

There are enough problems in the country and the world in general without people falling out over a traditional Christmas event, which is put on free of charge for the local community.

During these testing times it has been difficult for many of the volunteer led organisations to find volunteers for their annual events.

I understand 45 have put themselves forward for Carols from

the Cross.

At one time the Christmas Dickensian Festival was under threat due to lack of volunteers and I understand more are still needed – see the article below.

Lymm Transport Day and Lymm May Queen are other events that have struggled for volunteers.

Hopefully everyone can work together and pull in the same direction to ensure all our events can run smoothly and without people falling out, moving forward.

Deadline for the January issue of Lymm Life is December 6

Volunteers still needed for Dickensian Day

LYMM Dickensian is scheduled to take place once again this year on December 10 but organisers still need a small army of volunteers on the day to marshal the parade (both at the start point and through the village) and to assist in organising the setting up and taking down of the stalls (don't worry you won't be doing any manual work, the stall holders do the heavy bits!)

If you are willing to give up a couple of hours a few times a year organisers would love to welcome you to the committee to help in the planning for the event going forward.

If you would like to find out more before making a decision, please contact info@lymmdickensian.org in the first instance and they'll get back to you."

N & J STANHOPE Coal and Log Supplies

Best Quality Coal
Smokeless Fuel

Logs Supplied in Bags and Bulk
Nordmann Fir Non Drop Xmas Trees
Farm Fresh Turkeys

Broomedge Farm
Burford Lane, Lymm WA13 0SE

Tel: 752830
Mobile: 07979 785 421

WINNERS
Caring UK Awards 2021
Excellence and Innovation
in Dementia Care
RUNNERS UP
NAPA 2021 Arts in Care



OPEN for
New Admissions
Virtual & In-house tours
available

Award-winning dementia friendly Care Home

Exceptional care & facilities – including sensory garden & full activities programme



Dementia Care • Residential Care • Respite

www.keatehouse.com

Call: 01925 752091 Email: enquiries@keatehouse.com

9 Brookfield Road, Lymm, Cheshire WA13 0QL



NAPA Award Winners 2017, 2018
Plus 2020 – Best Activity Team



Panto scarecrow in 'Wizard of Oz' scares the birds at Primrose Hill!

THE birds around Primrose Hill Nursery were in for a shock as garden centre MD Adam Halford tried out his Scarecrow costume for Lymm Rugby Club's adult panto production of 'Wizard of Oz'!

Lymm Panto impresario and producer Simon Plumb was enthusiastic about the forthcoming production. "Rehearsals are going really well and Adam is working very hard learning his lines, although the Scarecrow doesn't

have a brain so it is proving tricky at times.

"I hope this isn't typecasting, but I do like the hat", added Adam, who is a tall man and his costume was created by his Mum and panto Wizard of Oz wardrobe mistress

Yvonne Challinor-Halford.

Lymm Rugby Club still has tickets available for the legendary and world-famous show, now in its 35th year, which is to run for 8 shows from 1st to 4th December and 8th to 11th December, with matinees on the two Sundays. All funds raised go to the Lymm Grass Roots

Clubhouse Appeal

Tickets, at £25 each, are available via this link: www.ticket.tygit.com/u/r/l/Lymm-RFC-Events

Alternatively, for further details, visit www.lymmrugby.co.uk

Panto virgins are more than welcome – especially on the front row!



Christmas Tree festival at St Mary's

THE popular community Christmas Tree Festival at St Mary's Church, Lymm will take place from Friday, December 2 to Sunday December 4.

Admission is free and the church already has 45 trees lined up. Refreshments – tea, coffee and cake – and a range of craft items and home-made produce, will be on sale every day.

The popular mouse hunt is also back with a prize for children who find where the sugar mice are hidden in the Christmas tree displays.

The church will be open from 10am – 4.30 pm on Friday December 3 with children from local primary schools and Lymm High School performing.

On Saturday the festival is open

from 10.00am-5.00pm with Alley Cats Choir performing at 10am, Lymm Golf Club Ladies Ukulele band at 12 noon, Rock Choir Knutsford at 2.30pm and St Mary's Children's Choir at 3.30pm.

Sunday sees the family Advent Service at 10am and the Christmas Tree Festival opening at 11am – 4.00pm with more entertainment from Lymm and District Chorus.

Rector, the Rev Bev Jameson said: "We are all looking forward to seeing you all at St Mary's for the Christmas Tree Festival this year, which will be a joyous and wonderful way to get into the Christmas Spirit. The entertainment is fantastic and I am a member of Rock Choir so it is a delight that I will be singing with them on Saturday."

Lymm Festival

**THE 2023 FESTIVAL WILL BE OUR
25TH
ANNIVERSARY EVENT!
22 JUNE TO 2 JULY 2023**

**SAVE THESE DATES AND LOOK OUT FOR MORE
DETAILED INFORMATION IN THE SPRING!**

#LymmFest23
www.lymmfestival.org.uk

Professional tree services

**Free
Quote**

- Domestic
- Vegetation management
- Commercial
- Stump grinding
- Site Clearance
- Re-planting
- £10m public liability insurance

Beechwood Industries
www.beechwoodindustries.co.uk

For more information,
please call us on
01925 860544

What's On in conjunction with Lymm Parish Council



LYMM PARISH COUNCIL

Tuesday December 13th, 7:30pm
Lymm Parish Hall
Check www.lymmparishcouncil.gov.uk for details.

LYMM THURSDAY EVENING BRIDGE CLUB

Lymm Village Hall every Thursday 7pm
Details: 07708 172015

MAPLE LODGE ART GROUP

Meet each Wednesday 9.30am - 11.30pm
Oughtrington Community Centre, Lymm
Details: 01925 755926

ROTARY CLUB OF LYMM

Meets at Warburtons Parish Rooms on the 2nd and 4th Wednesday each month at 8pm
Contact 01925 919053

LOVING HEARTS & HANDS

Knitting for charity at Lymm Methodist Church, 2nd and 4th Thursday each month. 1.30pm - 3pm. Details: 01925 753298

LUNCH AT THE BROW

Eagle Brow Methodist Church
2nd Friday in the month
Light lunches 12 noon till 1.30pm.
All proceeds to The Y Project Room at The Inn

GARDENING CLUB

Meet Third Wednesday of the month
Lymm Baptist Church, Higher Lane. 7.30pm
Visitors welcome. £2 includes tea and cake

LYMM FLORAL ART GROUP

Lymm Village Hall
Third Monday of the month (except August and December) at 7.30pm. Visitors most welcome. Contact: 07876 176501
lymmfloralart.org.uk

LYMM PHOTOGRAPHIC SOCIETY

Every 2nd and 4th Wednesday (ex July & Aug), 7.30pm
Spread Eagle pub, Eagle Brow.
Details: www.lymmphotosoc.org.uk

LYMM WINE AND BEER CIRCLE

3rd Wednesday of the month, 8pm
The Spread Eagle Hotel
Details: 01925 756444

LYMM CONCERT BAND

Rehearsals every Thursday evening
United Reformed Church, 8pm.
Details: 01925 752934

LYMM WI

Every second Wednesday, 2.4pm at Lymm Youth and Community Centre. Visitors welcome.

LYMM BOOK CLUB

Second Thursday of the month 7.30pm, Spread Eagle, Eagle Brow. Details 01925 752371

LYMM AND DISTRICT MIXED VOICE CHOIR

Every Wednesday 7.30 Lymm Methodist Church. Contact 01925 601664.
cath@stones.co.uk

PROBUS CLUB OF LYMM

A small, friendly social club for retired people. Meets on second and fourth Tuesdays at 2:15pm.
Details: www.lymmprobus.club

LYMM DINGLE PROBUS CLUB

A friendly busy social club for retired men. Meets on alternate Thursday afternoons at Lymm Baptist Church.
Details: www.lymmdingleprobus.club
Club secretary 01925 759995

FRIENDS OF LYMM LIBRARY CRAFT GROUP

Lymm Sanctuary Hub
Fridays 1.30-3.00pm
Details: 01925 754016

HEATLEY WI

Meets the second Thursday of each month at Oughtrington Junior School, 7.30pm
Visitors welcome. Details: 01925 752014

LYMM & THELWALL U3A

Speaker meeting 3rd Thursday of the month (excluding August & December) at Thelwall Parish Hall 10.00am. Prospective members welcome.
www.u3asites.org.uk/lymm-thelwall/home
Contact: enquiries@lymmthelwallu3a.org.uk



LYMM PARISH COUNCIL

Tuesday December 13th, 7:30pm
See parish council website for details.

New parish cllr. co-opted at Lymm

A new cllr. has been co-opted at Lymm Parish Council.

Karen Rurlander has been co-opted to serve as a Lymm Parish Councillor until the next elections in May 2024. She takes over from Selina Kirkham who had to resign due to work commitments.

Karen has lived in Lymm for nearly thirty years. She spent over twenty years as part of the British Airways promotional and recruitment team until the base closed. She then retrained and now

works as a teaching assistant at Oughtrington Primary School. She has also served as a governor at the School for the last fifteen years.

Karen said: "I feel very fortunate to live in a village that still holds a community feeling and is an attractive place to live. I am grateful for the opportunity of being a councillor to maintain this spirit and to help continue its traditions."



**E SMITH AND SON
PLANT CENTRE**
WWW.LYMMPLANTS.CO.UK

Over 60 years in Lymm and still growing!

THE NURSERY, BOOTHS LANE, LYMM, WA13 0PF
01925 752459

**Derek, Sarah, Clare and Klaudia wish you all
a very Merry Christmas!**

**Open for Christmas Wreathes, Potted Trees
Christmas Gifts and Decorations
Wreath Making Courses**

See website for Christmas opening times

OPEN ALL YEAR FOR YEAR-ROUND COLOUR! MON TO SAT 10AM - 4PM | SUN 11AM - 3PM

LEADERS IN FAMILY LAW.

Delivering the results when it matters

Specialising in:

Divorce & Separation
Financial Settlements
Child Related Matters



Stockton Heath 01925 912 277

Hale 0161 926 1430

Manchester 0161 834 2623

caroline.swain@bpsfamilylaw.co.uk

www.bpsFamilyLaw.co.uk



Less is More!

- Get paid quicker – Improving your cash flow
- Less time spent sorting old receipts – Free up countless hours each week.
- Less jargon and more proactive advice – Watch your business flourish.

Don't let these issues hold your business back.

To find out how we can remove your financial headaches call us:

01925 761600

or visit us at:

www.stylesandco.co.uk

styles and co.
chartered accountants

xero

SILVER PARTNER

Serenade says farewell

AFTER 25 years of performing at many local events, singing a cappella and entertaining with interesting stories, choreographed moves and stylish costumes the ladies of Serenade are retiring.

They have proved popular at many events including Dickensian Day, the Arley Hall Flower and Carol Services and the Christmas Tree Festival. In addition, they have performed at numerous private functions, such as birthday and retirement parties, and for church and WI groups around the Warrington area, raising thousands of pounds for various charities at the same time.

Sadly the time has come to step back from public performances, but they will continue to sing, both for pleasure and for the well-known health benefits.

Leader Mary Clarke said "We've had some amazing experiences over the 25 years we've been together. Four-part unaccompanied singing is extremely difficult and we feel it is time to hang up our pitch pipe and matching costumes, and do something easier. We will carry on singing, but just for ourselves."

Please see the website for more information www.serenade-lymm.com



Call us on: **01942 607250**

www.elbfireplaces.co.uk

70 Twist Lane, Leigh, Lancashire WN7 4DP

Fire Surrounds, Stoves, Gas & Electric Fires

Established
40 YEARS

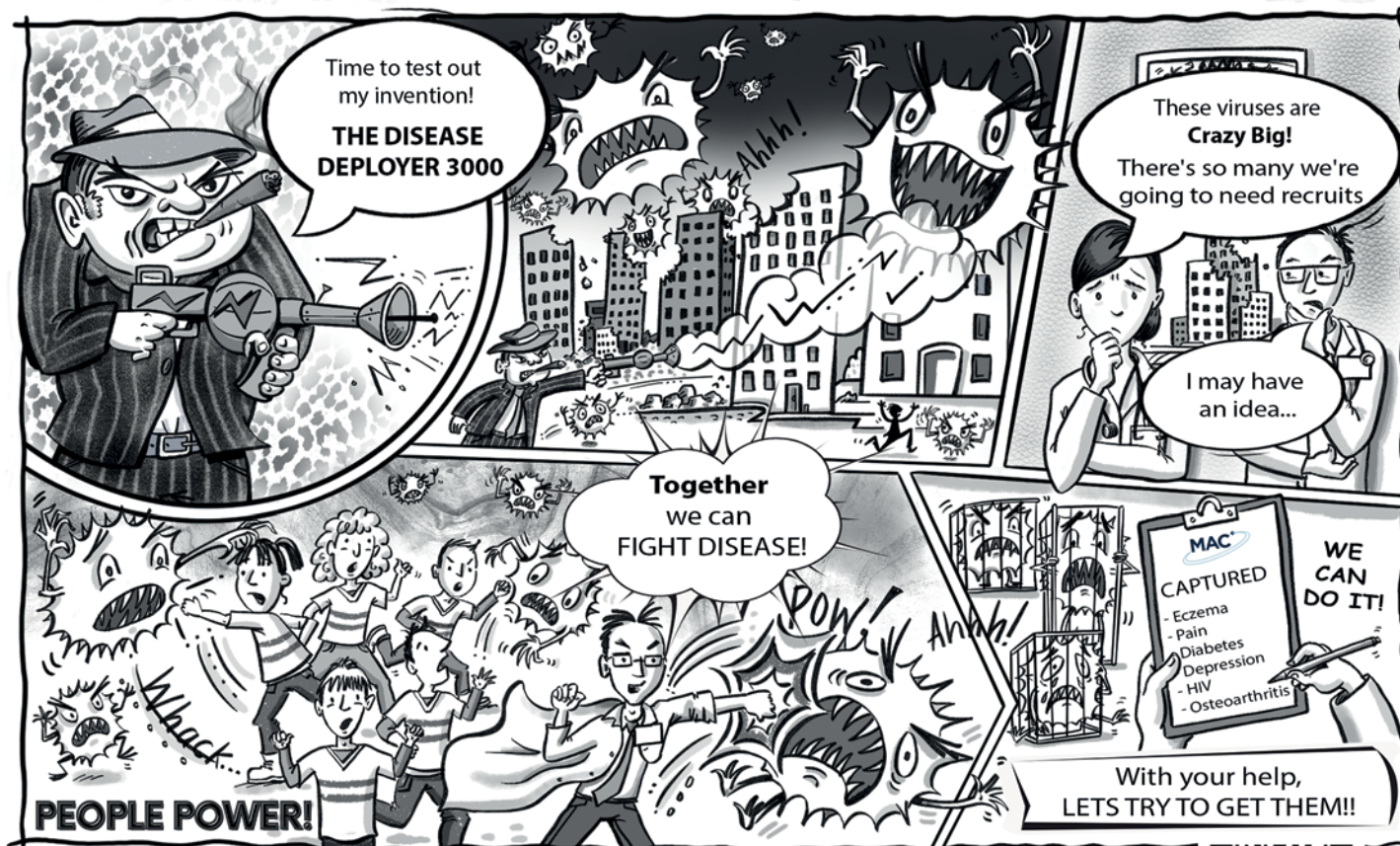
No need to change your carpet - made to measure fireplaces

Over 75 displays over 2 floors

Live wood burning stove on display

Is your conservatory too cold to use in Winter?

Why not install a stove?



Join a Clinical Trial

Find out more at researchforyou.co.uk, call our healthcare team on 0800 121 6397 or scan the QR code



Christmas at Primrose...



Wreaths



Christmas Gifts

Premium Christmas Trees

Join us for complimentary mulled wine, mince pies and selection boxes every weekend from Saturday 19th November 2022!



PRIMROSE HILL
NURSERIES

Est. 1935

WARRINGTON ROAD, HIGH LEGH, KNUTSFORD, CHESHIRE WA16 0SQ. 01925 752635



LYMM FOR SALE
The catalogue of the 1911 auction that changed village life for ever.

LYMM XMAS CARDS

NEW BOOK XMAS 2022

NEW JIGSAWS

lymmhic.co.uk
Shop online too



Latest Heritage Centre book recounts the day Lymm was up for sale!



A new book is being published in time for Christmas recounting the day over 150 properties in Lymm were up for sale more than 100 years ago!

The latest Lymm Heritage Centre book will be out later this month, recalling how in September 1911, hundreds of people could be seen queuing at the door of Lymm's Drill Hall. Almost all of them were clutching a weighty book.

It was the auction catalogue for the sale of large portions of the village, over 150 lots in total, and the auction was about to start. Just six months earlier Sir William Lever's purchase of the entire Beechwood and Oughtrington Estates had made the national news with headlines like "Mr Lever Buys a Town". But now he was selling on the majority of his acquisitions.

The catalogue reads like a modern Domesday book with all the properties, some familiar, some long gone described in detail. Pubs, banks, shops, post offices and a wide range of houses all feature in this unique snapshot of one moment in village history.

Now for the first time, an original copy of the whole 150-page catalogue has been painstakingly scanned and copied by volunteers at the Heritage Centre, including over 20 full-page illustrations.

The book also includes additional chapters that describe other aspects of village life in 1911 as well as a fictionalised account of one man's experience of the auction, based closely on newspaper reports of the time.

Discover too "what happened" next with a detailed table of who bought what for how much and how Lever made further attempts to sell the residue of the estate in a further auction in 1919.

The original catalogue contained two large pull-out maps. These have been cleverly condensed into a separate 16-page full-colour map booklet that sits in a sleeve inside the back cover of the book.

All in all it's a publication that no Lymm enthusiast will want to be without. It goes on sale in mid-November at the Heritage Centre, Lymm Post Office, Ruby & Harry's and online at lymmheritageshop.co.uk.

Visit the Heritage Centre, 1 Legh St WA13 0DA Thurs-Sun 12-4 for other Lymm-based gifts: books, three top quality new jigsaw designs and Christmas cards. www.lymmhic.co.uk




G P BROADSMITH & SON
POOL FARM, LYMM
Bottled on the Farm from our Free Range Cows


DELICIOUS MILK FROM OUR HAPPY COWS DELIVERED TO YOUR DOOR!

Here at Pool Farm we take good care of our free-range dairy cows. They produce fresh, quality milk which is bottled in our own farm dairy and delivered to local doorsteps. We also stock a range of associated products such as eggs and potatoes, all sourced from local farms.

Call 757655 or email milk@broadsmith.com to discuss early morning deliveries to your doorstep and follow us on Facebook or Instagram at @broadsmiths where you can keep up to date with life on the farm!

G P BROADSMITH & SON
POOL FARM, POOL LANE,
STATHAM, LYMM, WA13 9BW
TEL: 01925 757655
YOUR LOCAL DAIRY Est. 1932






ANDY CARTER MP
Member of Parliament for Warrington South

I hold regular constituency advice surgeries at my Warrington South office and around the area.

To make an appointment call **01925 231 267** or email **Andy.Carter.MP@parliament.uk**

Promoted by Stephen Taylor on behalf of Andy Carter MP of 1 Stafford Road, Warrington WA4 6RP. Funded through the allowances available to the Member of Parliament.






Lymm Dickensian

CHRISTMAS FESTIVAL

Saturday 10th December 11am—5pm

Children's Violin Buskers , Punch and Judy
 Earl of Stamford Morris Dancers
 Lymm High School Band ,Clown, Big Sing
 Bollin Morris Dancers ,
 Lymm Morris, Street Entertainment



**LYMM DICKENSIAN RUNS A
 VINTAGE BUS TO AND FROM LYMM HIGH
 SCHOOL**



**A RANGE OF STALLS SELLING EVERYTHING
 FROM CHRISTMAS GIFTS TO FOODS &
 DRINKS ARE LOCATED IN THE FOLLOWING
 PLACES:**

Lymm Village Hall
 Toilets & Refreshments
 Lymm Artists Exhibition in the
 council chamber.
Youth & Community Centre
 Toilets, Refreshments
Lymm Methodist Church
 Light Refreshments served downstairs all day.
Lymm Heritage Centre (off Bridgewater Street)
Village Centre (The Cross, Eagle Brow and Bridgewater Street)

**LYMM CRUISING CLUB
 ILLUMINATED FLOTILLA
 Approximately 16:30
 Bridgewater Canal (by
 Lymm Youth Club)
 (Event subject to weather)**



Have your say on Phase Two of Trans Pennine Trail improvements

THE next phase of improvements to the Trans Pennine Trail (TPT) in Lymm is about to get underway – and borough council chiefs at Warrington are seeking the views of local people on the proposals.

Following the successful completion of phase 1 of the TPT upgrade earlier this year, funding has been awarded by Sustrans for Phase Two of the scheme. This will see major improvements being made to the trail between the ranger cabin and the Camsley Lane subway.

Design work has now begun on this phase, which aims to provide an improved all-weather surface which would benefit people walking, cycling, and those using mobility scooters and wheelchairs. In addition, the existing A-frame barriers on Star Lane would be removed and replaced by new access controls.

As in Phase One of the scheme (which runs between Whitbarrow Road and Reddish Lane), Phase Two will see the use of an innovative new surface. Instead of tarmac. The proposals are to use a mixture of recycled rubber from vehicle tyres and natural stone aggregate which forms a hard-wearing but porous surface.

The benefits of this type of surface is that has a much lower environmental footprint, requiring less tree removal and allowing for better drainage. It has a softer surface which is better for

pedestrians, runners, dog walkers and horse riders. It is also much more attractive than tarmac, thanks to the golden aggregate giving it a speckled appearance.

Phase One used the equivalent of more than 10,000 recycled car tyres for its surface, which is a saving of 230,555kg of CO2 had these tyres been burned.

The borough council is now inviting comments and feedback from the public on the TPT phase 2 plans. You can get involved in the consultation, which runs until 30 November, by visiting warrington.gov.uk/TPT-Lymm and completing the online survey.

Two drop-in exhibitions were arranged in November including one on Saturday, November 19, between 10am and 1pm, at the ranger cabin on Statham Avenue.

In addition, 3,600 letters have been delivered to all residents and businesses in this area of Lymm, providing further details about the plans.

Borough council cabinet member for transportation, highways and public realm, Cllr Hans Mundry, said: "Phase One of the TPT upgrade in Lymm has been a real success, making this important active travel route more inclusive.

We're delighted to be working with Sustrans again to deliver the phase 2 improvements.

"As in Phase One, the Phase Two improvements will make this part of the trail more accessible for everyone, providing a smoother, more weather-resistant surface, and removing the old-style barriers that can make using the trail much more difficult for people with disabilities.

"We are now at the design stage of this phase of the project, and we're keen to hear people's views. Please get involved in the consultation and have your say. Your feedback will help inform the

design, so we can deliver a first-class scheme for everyone who uses the trail."

The consultation runs until Wednesday, November 30.

If you have any enquiries about the TPT upgrade scheme, please email active@warrington.gov.uk.

Sustrans is a charity making it easier for people to walk and cycle. It connects people and places, creates liveable neighbourhoods, transforms the school run and delivers a happier, healthier commute. See more details at www.sustrans.org.uk



Kids Planet nursery group wins top national award



LYMM-based nursery group Kids Planet has won a national award for its dedication to children with Special Educational Needs and Disabilities (SEND).

The Kids Planet SEND team collected a top prize for Early Years Provision at the sixth annual awards hosted by NASEN – the National Association for Special Educational Needs and Disabilities.

Kids Planet was put in the spotlight at a ceremony at The Grand Hotel in Birmingham for its remarkable work in helping its pupils with special educational needs and/or disabilities and learning differences thrive and achieve.

The Kids Planet SEND team is two years old and comprises four members with a combined 40 years of service between them. The team constantly advocates for children with SEND, and champions for them to be at the centre of the company. They also consistently work to support numerous settings in the upskilling of knowledge, ensuring practices are fully inclusive and differentiated, to meet

children's needs and celebrate strengths and successes.

Becky Eckersley, SEND team lead at Kids Planet said: "We were incredibly honoured to have been shortlisted for the Early Years Provision category at the NASEN Awards and are absolutely thrilled to have been recognised for our team's hard work and dedication to working with the Nursery SENDCOs to make a difference to the lives of children and families with SEND by receiving the award, it's such a fantastic achievement for the SEND team and Kids Planet."

Chief Executive of NASEN Annamaria Hassall said: "The Kids Planet SEND Team should be extremely proud of what they have achieved. Our judges agreed that the team is clearly effective in their work, with glowing testimonials from parents. We also admired their overall commitment to championing children under five with SEND, raising funds for the National Autistic Society (NAS) so they can continue their work in supporting families of children with Autism."

EXCHANGE YOUR GOLD AND SILVER FOR INSTANT CASH



All items of jewellery accepted

Did you know...?

We accept silver jewellery, cutlery, tea sets, spoons, cigarette cases, candlesticks, trophies, trays, medals, coins and pocket watches.

**ROLEX WATCHES WANTED!
ANY CONDITION**

Open: Tuesday-Saturday: 10am - 5.30pm

1 London Road, Stockton Heath
(First floor entrance on Fairfield Road)

07544 486 621



Need IT Support at Home?

- Skilled and Friendly Technicians
- PC and Laptop Support
- Home Visit or Remote Dial-in
- Antivirus/Malware Check
- Unlimited Support Time
- Equipment Supplied: Laptops, PCs, Printers & Bespoke Builds



aspire
Computers Ltd

Call our Team: 01925 251143

sales@aspire-computers.com | www.aspire-computers.com

FREE* ADULT COURSES AT WARRINGTON & VALE ROYAL COLLEGE



We understand that many people are worried about the increasing cost of living, but we don't want this to be a barrier to learning. That's why we are offering FREE* Adult Community Learning (ACL) courses to anyone who enrolls on an ACL 2022/2023 course!

Banish those winter blues, learn new skills and make new friends on an ACL course at Warrington & Vale Royal College

There are plenty of courses to choose from including:

- Christmas Cake Decorating
- Cooking on a Budget
- Christmas Dishes
- Sign Language
- Spanish
- Italian
- Creative Writing
- Christmas Wreath Making
- Christmas Floristry
- Enhance your Digital Skills

The list is endless!

Discover how we are supporting our local communities this winter. Browse our range of ACL courses or download our course guide here:

wvr.ac.uk/study/adult-courses

*Terms & conditions apply.



APPLY NOW FOR SEPTEMBER 2023!

Applications are now open for Warrington & Vale Royal College's huge range of vocational courses, T Levels and apprenticeships for school leavers, all of which lead students onto successful careers and university places.

Last year we saw unprecedented demand for a vast number of courses, with many pupils who left school this summer on waiting lists to enrol.

If you are considering continuing your educational journey at Warrington's leading provider of technical training, we would strongly encourage you to apply early to avoid disappointment.

Head to wvr.ac.uk/16-18 to apply today!

#TheCareerCollege

Where a qualification becomes a career.





LYMM PARISH COUNCIL NEWSLETTER

2022 has been a very busy year for the Parish Council that included the recent Remembrance Day parade, the Platinum Jubilee Celebrations and, sadly, the funeral of Her Majesty the Queen. These all demonstrate how much time officers and councillors spend on organising safe, often large scale, public events.

Events such as Carols from The Cross have become victims of their own success - attracting very large crowds that must be managed safely. The requirements applicable to such events are now much tighter than in the past. They must be run according to an Event Management Plan that needs signing off by Warrington Borough Council and the Emergency Services. Volunteers helping at such events need to be properly trained and briefed.

Carols from The Cross will take place on the usual date of Christmas Eve, 24th December, with a new look and time. The stage is being moved to the Lower Dam, giving more people a better view and to enable a large crowd to be accommodated safely in the village centre. This also gives the Lymm Radio presenters, singers and musicians a safe space to perform from. A sound system is being hired in to enable more people at the event to hear the presenters and the band. The roads will be closed from 5.30pm and Lymm Radio will start the festive warm up from the stage at 6pm with a live outside broadcast, preparing the crowds for the carols starting at the usual time of 7pm. As is the new tradition, Lymm Radio will be broadcasting the event live across the airwaves, so those who cannot attend in person can still enjoy it from work or home.

At the time of writing, the tree brackets and electric sockets for the festive decoration of the village are in the process of being checked for safety. Once completed, the Parish Council will arrange for the appropriate trees and lights to be installed in time for the Dickensian Festival.

The first Christmas Advent Trail will be launched on the 1st December. Collect a calendar from a local business or print from the Parish Council's website and start filling in your sheet. Once complete, exchange it for a prize. Check the website for more details.

Next year, the Parish Council will be responding to any modifications that will be recommended by the Inspector for Warrington's Local Plan. Developers felt that Lymm was not taking its fair share of development and those disappointed in the site allocations challenged some of the sites that have been chosen. The Parish Council has agreed to continue funding for the professional support we are getting to ensure that the Local Plan does as little harm to the village and its green belt as possible.

Once the new Local Plan is approved, those writing Lymm's Neighbourhood Plan will be able to make the finishing touches before it goes out for consultation.

The village hall roof, parts of which are now beyond easy repair, needs replacing next year and a planning application to approve the work will be submitted shortly. Also, a planning application is required to allow the Parish Council to reduce the size of the two London Plane trees near The Cross in the village centre as well as upgrade the central noticeboard. An arboriculturist's report stated these trees are healthy and should last for some time but need trimming down to reduce their size and impact.

The public toilet at Lymm Dam has reopened following vandalism.

The planter at the Lower Dam has been approved for repair and weather permitting, will be repaired in time for the festivities.

We look forward to the holiday season that will include the traditional Lymm Dickensian Christmas Festival on the 10th December and Carols from the Cross on Christmas Eve, 24th December. We look forward to seeing you all.

*Cllr Bob Barr.
Chairman*

Contact information:

Clerk to the Council: Kerry Duffin - 07741 877870
clerk@lymmparishcouncil.gov.uk

Parish Council Website:

www.lymmparishcouncil.gov.uk

Lymm Parish Council 2022-23



Name: Cllr Bob Barr OBE (Chairman)
Address: 2A Danebank Road, Lymm WA13 9DH

Telephone: 01925 750910
Email: rbarr@lymmparishcouncil.gov.uk



Name: Cllr Ann Johnstone (Deputy Chairman)
Address: 3 Lakeside Road, Lymm, WA13 0QE

Telephone: 01925 755554
Email: ajohnstone@lymmparishcouncil.gov.uk



Name: Cllr Kath Buckley
Address: 16 Hardy Road, Lymm WA13 0NX

Telephone: 01925 752439
Email: kbuckley@lymmparishcouncil.gov.uk



Name: Cllr Chris East
Address: 7 Newfield Court, Lymm WA13 9QU

Telephone: 07743 489329
Email: ceast@lymmparishcouncil.gov.uk



Name: Cllr Graham Gowland
Address: 32 Wychwood Avenue, Lymm, WA13 0NE

Telephone: 01925 751599
Email: ggowland@lymmparishcouncil.gov.uk



Name: Cllr Ian Marks MBE
Address: 80a Whitbarrow Road, Lymm WA13 9BA

Telephone: 01925 753051
Email: imarks@lymmparishcouncil.gov.uk



Name: Cllr Tim Martland
Address:

Telephone: 07759 078412
Email: tmartland@lymmparishcouncil.gov.uk



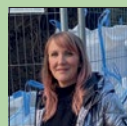
Name: Cllr Karen Rurlander
Address:

Telephone: 07717 855697
Email: krurlander@lymmparishcouncil.gov.uk



Name: Cllr Ben Selwood
Address: 44 The Crescent, Lymm WA13 0JY

Telephone: 01925 752624
Email: bselwood@lymmparishcouncil.gov.uk



Name: Cllr Sally Sharma
Address: 5 Baycliffe, Lymm WA13 0QF

Telephone: 07960 383148
Email: ssharma@lymmparishcouncil.gov.uk



Name: Cllr Julia Stansfield
Address: 46 Sandy Lane, Lymm WA13 9HQ

Telephone: 01925 758809 / 07928 848256
Email: jstansfield@lymmparishcouncil.gov.uk



Name: Cllr Stephen Towndrow

Telephone: 01925 757560
Email: stowndrow@lymmparishcouncil.gov.uk

Major plans in pipeline to expand Lymm Truck Stop



PLANS are in the pipeline for a major expansion of the Lymm Poplar Truck Stop, almost doubling the number of car parking spaces along with increased parking for HGVs.

The proposals involve increasing the number of car parking spaces from 314 to 608, including an additional 30 spaces for staff members, while the number of HGVs would increase from 305 to 368.

Milton Keynes-based Smith Jenkins Planning & Heritage has submitted a screening process application for an Environmental Impact Assessment to Warrington Borough Council seeking to determine whether the planning development is appropriate or not for the area.

Current proposals comprise an extension to Lymm Poplar 2000 Services on Cliffe Lane, Lymm, to provide additional HGV parking with associated re-configuration of the parking areas and HGV fuel station, extension to the amenity building and part change of use to the motorway service area, to provide signage of the Site from the M56 motorway.

Most of the proposed development involves the reconfiguration of the existing Site. However, to accommodate the proposed extension to the parking facilities the scheme would seek to incorporate the trees and undeveloped field situated to the north-east. This area would be utilised for additional HGV parking.

In terms of other aspects of the development, the extension to the amenity building would project off the south-east facing elevation, increasing the overall size of the building from 3,100 sqm to 3,770 sqm. As alluded to above, the various other alterations to the parking arrangements and pedestrian/vehicle access routes throughout the Site would involve

the reconfiguration of the existing areas of hardstanding within the Site.

The applicants state the proposed development is not a 'destination' development in itself but would be used by traffic already using the SRN, including the M6/M56. Therefore, it is not anticipated that there would be a significant increase in vehicle numbers and flows on the SRN and adjoining roads once the proposed development has been completed. In addition, whilst there will be additional vehicular movements to/from the M6/M56 and the associated slip roads, given the existing use of the Site the impact of the development in this regard is considered to be minor. The Site is already signed from the M56 and M6 motorways.

During the construction phase, some additional vehicle movements would be generated. The temporary traffic generated during the construction phase is not likely to be perceptible in terms of the existing flows on the M6/M56. It is not anticipated that construction traffic would result in increased delays on the SRN or increase road safety concerns on local roads. Furthermore, there is an existing baseline of HGV movements on-site associated with its existing use.

It is considered that the proposed development would be generally beneficial with regards to socioeconomic impacts, providing both short-term jobs at the construction phase and longer-term permanent jobs during the operational phase.

Warrington Borough Council planners will consider the screening application

Eileen re-elected as president

EILEEN Woods was re-elected president of Heatley WI at the annual meeting in November.

The meeting was told 2022 had been a good year for meetings, outings and social occasions.

Main celebration had been the institute's 76th birthday party, held jointly with the 100th birthday party of one member, Gladys Taylor, which proved to be a memorable event.

After the business and a break for tea and chat there was a quiz prepared by the president. Members had to rack their brains for the answers which were the names of different biscuits.

Your pet questions answered

By Dr Diane Wilshaw
Lymm Veterinary Surgery

Q: I am concerned that my dog may have swallowed part of my child's plastic toy. We found the toy chewed up but are missing piece about the size of a 20 pence piece. What should I do?

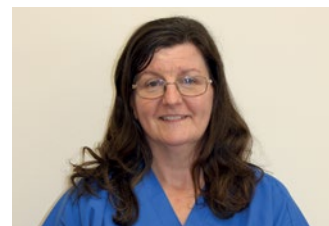
A: Depending on how large your dog is a piece the size of a 20p coin may or may not pass through your dog. If your dog has swallowed the missing piece, you would be looking for signs of a gastrointestinal obstruction such as persistent vomiting, inappetence or severe weight loss. I would also check their faeces for it passing through. Usually, most things will pass within 48 hours.

Q: A couple of months ago I noticed a lump on my cat's shoulder which had gone septic. I assume he has been in a fight (again!). I bathed it with cotton wool and warm water, and it went away. It has come back again but he doesn't seem to be in any pain. How should I treat it?

A: When you initially cleaned up the wound and got rid of the pus the lump may have disappeared but if you did not get rid of the infection completely, the lump and pus will return. You need to take your cat to your vet who will probably prescribe antibiotics to clear up the infection. If it has turned into an abscess it may need surgically draining.

Q: Can rabbits and guinea pigs pass diseases on to each other?

A: Both rabbits and guinea pigs can suffer with mites, but the mites are different species and therefore cannot be passed from one to the other. Bacterial infections can occur in both but rather than directly spreading from one to the other it is more likely to be caused by contaminated bedding or feed.



Q: My three-year-old Dachshund keeps licking and chewing at her front paw and is making it red raw. I have checked the paw over and between her toes and can't notice anything out of the ordinary, why is she doing this to herself?

A: It sounds like you need to get your dog checked over by a vet so that they can investigate this matter further. Several factors can be contributing to your pooch's itchy feet. The cause could be an infection at the base of the claw or in-between toes because of a build-up of bacteria and fungi, requiring medication. Alternatively, your dog may have had an allergic reaction to something in her environment or food suffer which is causing her to itch and chew her feet.

Q: Do cats or dogs make better pets?

A: It all depends on your lifestyle, personality and what role you want a pet to play in your life.

A pet is just like having a child. If you are a working individual that won't have the time to exercise a dog morning and night and ideally have somebody to at least let them out at lunchtime, then a cat may be a better choice for you. Dogs are usually more interactive and social animals and are a great reason to get out and keep fit too.

Some cats like Siamese are more 'people' orientated and can be more dog-like in their desire to interact with people like dogs do.

Give your kitten the best start in life with our

Kitten Pack



Our Kitten Pack includes:

- Initial Cat Vaccination Course
- Microchip, and database registration
- 4 weeks free insurance

- One month worm and flea treatments
- Discount vouchers
- Cat care information book
- Sticker



Lymm Veterinary Surgery

www.willowsvetgroup.co.uk

ALL FOR

£60.00

TEL: 01925 752721

10 Booths Hill Road, Lymm, Cheshire WA13 0DL



@LymmVets



@LymmVets

Council u-turn as Lymm Carols from the Cross reverts back to Christmas Eve

FOLLOWING a public outcry and an extraordinary meeting, Lymm Parish Council has voted to move the date of this year's Carols from the Cross back to Christmas Eve, December 24.

The earlier decision to hold carols on Friday 23rd of December was revisited following a request from several parish councillors.

Explaining the decision chairman Cllr Bob Barr said: "The carols event will only go ahead when the Parish Council demonstrates to Warrington Borough Council and the Emergency Services that it will be held safely.

"This must be in accordance with the Event Management Plan. There must be named and qualified individuals from the Parish Council and the local community, signed up to accept responsibility to fulfil key roles before and during the event. This is necessary because Lymm's Carols from The Cross has become

one of Warrington's largest public events and safety is paramount."

It was stressed that the decision to hold the event on the 23rd was correctly and diligently taken on the basis of information available at the time.

Cllr Barr added: "The Parish Council looks forward to welcoming the public to Lymm village centre on Christmas Eve."

Meanwhile, Jenna Brown, who recently took over as Chair for the May Queen said: "Taking into account the last few years that were tough to endure as a community it was even more important to be able to provide a wholesome, family event for all to enjoy.

"This is what was the driving factor for residents to come together and find a solution to keep the Carols by the Cross on the traditional date of December 24th. While I, and others, fully supported the decision that the Lymm Parish Council made to move the Carols to the 23rd we felt there was a solution to enable the Council to keep the original day of Christmas Eve. The Events Committee for the Council was faced with a massive deficit in volunteer support to continue to run the event safely for the thousands of people that were expected to turn out for the event. This led the Council to hire an outside



contractor to organise and staff the event. The outside contractor was not able to fulfill the required number of staff on Christmas Eve so the decision was made to move it to the day before. While this was an entirely reasonable solution it did not sit well with many who attend every year.

"This move was also detrimental to the many restaurants and businesses that had started making plans for the evening. Hospitality would have planned entertainment, food and alcohol orders, and staff scheduling to cover the demand of an additional 3 to 4 thousand visitors in the village over a few short hours. Many restaurants have seen an extraordinary number of cancellations for the 24th, including large parties that have booked out rooms, with very few rebooking for the 23rd. At a time when the hospitality industry is struggling to recover after Covid restrictions, coupled with the staggering rise in

the cost of living, this meant an even bigger blow

After speaking with the Parish Council, it was determined that the main factor for moving this event back to Christmas Eve was that a significant number of skilled volunteers were needed. There are several remaining points that need to be completed to meet Warrington Borough Council's criteria for the event to proceed regardless of the day it's being held. This will become clearer as the Clerk to the Council outlines the final plans. There were several members of the public determined to source the volunteers needed. A general number of 25 volunteers was given and we managed to enlist a staggering number of over 45 volunteers willing and able to assist the Council in keeping the public safe. The volunteer recruitment effort was an outstanding response from the community."

Established 1878

John Burrows & Sons
Fourth Generation Independent Family

Funeral Directors

Friendly & Professional Service
Day or Night ~ J. Tandy

The Old Smithy, Mill Lane, Lymm,
WA13 9SE Tel: (01925) 752501

Golden Charter
Funeral Plans

www.johnburrowsandsons.co.uk



Commercial • Commercial Property • Litigation
Employment • Wills • Trusts • Probate
Personal Injury • Conveyancing • Crime • Family & Divorce

01925 230000
info@fdrlaw.co.uk

Serving Warrington and surrounding areas

www.fdrlaw.co.uk



CLASSIFIED

Call 01925 631592 to advertise

ACCOUNTANCY & BOOKKEEPING

BOOKKEEPER/ACCOUNTANT. Licensed for maintaining financial records, VAT Returns, Payroll Service, Management Accounts, SAGE Software Consultancy. **Contact: 07815 617914.** (G1)

CARPET CLEANING

A1 STAINBUSTERS. A Warrington company cleaning carpets, hard floors, Upholstery (Leather + fabric) and curtains in situ. FREE quotes for domestic and commercial. Approved carpet cleaners for Hancock and Woods for over 10 years. **Call John on 07765 314080** (J6/22)

SIMPLY THE BEST CARPET CLEAN YOU will ever have. Cleaners UK Ltd. Est over 35yrs. Have your carpets & sofas beautifully deep cleaned leaving them fresh smelling & colour restored. Latest & best methods. Dry/steam. Leather cleaning, oriental rug specialist. Professional, reliable & affordable. **For more info call Neil Riley on 01925 264989 / 07831 336060 www.cleaners-uk.net** (J4/23)

CAR SALES

PARKVIEW CAR SALES

We buy and sell QUALITY CARS

Best price paid

Telephone Peter on 01925 575737 / 07957 545479

23 Padgate Lane
Padgate, Warrington
Cheshire, WA1 3RS (G1)

CHILD CARE

OFSTED REGISTERED CHILDMINDER
Lives close to Ravenbank School. Full time or Part time placements available. Pick up and drop off from Ravenbank School or Rosebank Nursery. From ages 0-12 years. **For more information contact Carole on 07731 089656 or leave a message on 01925 755108** (J4/23)

CLEANING SERVICES

arleys angels

- Spring Clean Specialists
- Presenting your home for sale
- Moving house
- After building work cleans

01925 266834
... because you're worth it! (G1)

CLEANING SERVICES

SIMPLY THE BEST CARPET CLEAN YOU will ever have. Cleaners UK Ltd. Est over 35yrs. Have your carpets & sofas beautifully deep cleaned leaving them fresh smelling & colour restored. Latest & best methods. Dry/steam. Leather cleaning, oriental rug specialist. Professional, reliable & affordable. **For more info call Neil Riley on 01925 264989 / 07831 336060 www.cleaners-uk.net** (J4/23)

ELECTRICAL CONTRACTOR

TRUST PROPERTY ELECTRICAL SERVICES. NICEIC Part P Approved Contractor. All Electrical work undertaken. Inspection & Testing & PAT Testing. All work certified & guaranteed. **Call Tim on 07754409906 or 01925 601055** (G12/22)

GARDENING SERVICES

• All aspects of tree surgery
• Stump grinding
• Waste removal
• Locally based
• Free quotation

Beechwood Industries
www.beechwoodindustries.co.uk
01925 860544 (G1)

MORTGAGES

TALKING MORTGAGES - INDEPENDENT MORTGAGE ADVICE.
For local, impartial and professional advice on all aspects of mortgages contact Darren Simpson on **07708 975122** (G8/21)

PHOTOGRAPHY

FAMILY & PET PORTRAIT PHOTOGRAPHY
lymm based Andrew Collier Photography specialises in family and pet portrait photography using lymm locations as a backdrop. Personal service with beautifully made frames and albums. **Call Andrew on 01925 471091 or visit www.andrewcollierphotography.co.uk** (G4/22)

PAYROLL

WHY TRY TO BE A PAYE EXPERT?
Watkinson Black can provide a cost effective payroll service, releasing you to concentrate on your business. **For further details please phone: 01925 413210 or e-mail: info@warringtonaccountants.co.uk** (G1)

RE-UPHOLSTERY

Orchard Soft Furnishings

RE-UPHOLSTERY
CURTAINS • BLINDS

FREE MEASURING & FITTING

TEL: (01925) 756388
www.orchardsoftfurnishings.co.uk (G1)

TAXI / PRIVATE HIRE

Horn's

Airport Transfer & Taxi Specialists
CALL MARTYN: 01925 751761
MOBILE: 07881 786250 (G9/22)

TYRES

EVERGREEN Centre of Excellence

Express
Mobile Tyres

Local Family Business. Est 1997
01925 810000
www.expresstyres.co.uk
Order Online Today!

Branded & Budget Tyres
Cars, Vans, 4x4's, Caravans
Light Commercial
& Performance Vehicles

The tyre service that comes to you at home or your place of work

No Call Out Charge!

BRIDGESTONE MICHELIN
GOODYEAR Continental (G1)

To advertise in the classified section from as little as £15+vat

Call us now on 01925 631592

Obituary Notices

While Obituary notices are published free of charge, due to pressures on space, we can never guarantee they will be used and there can also be a delay of several months.

If you would like to guarantee a notice to appear in the next available issue, these can be purchased for £75 plus VAT which helps towards the running costs of your free community magazine.

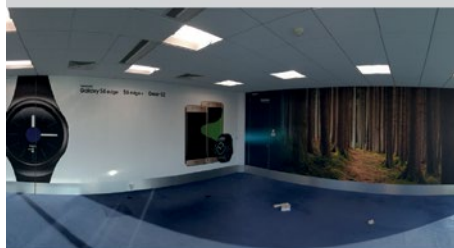
To place an obituary notice or any other public/family notice please email info@lymmlife.co.uk

Your notice will appear the same size as this advertisement.

twentyfour seven
design & print ltd

We supply and fit all types of signage: self adhesive graphics, glass, metal, wood, perspex, foamex plastic.

Call or email for a free site visit.



01925240247 info@247print.net www.247print.net

The North West's leading supplier of concrete

www.barrowmixconcrete.com

BARROW - MIX

1984-2022
38TH YEAR
ANNIVERSARY



FREE SITE SURVEY

6 DAY SERVICE

All areas covered

Free barrowing service

Only pay for what you lay

From half a cubic metre upwards

Levelling/laying service if required

(minimum charge)

We can supply

C25, C30, C35 Fibre Reinforced



Call NOW for a FREE quotation
01565 734111 or 01942 722629