

Lymm Life Magazine

ISSUE 277 | AUGUST 2022

DELIVERED FREE TO 5000 HOMES



urban

BUILDING PROJECTS LTD

Extension & Building Renovation Specialists

Tel: 01925 730888

www.urbanbuildingprojects.co.uk



Picture: Alan Williams



LYMM PARISH COUNCIL
Approved by Lymm Parish Council as the official magazine for Lymm



Burford Lane Vets
Your practice for life



Register your pet for free
Call 01925 949 949

Keeping the spirit alive!

Centre pages

Regular news updates at www.warrington-worldwide.co.uk

Editor's Comment



Editor
Gary Skentelbery

Production
James Bryan

Advertising
James Balme
Telephone
01925 631592

Editorial
01925 623633

Email
info@lymmlife.co.uk

Websites
www.lymmlife.co.uk
www.culchethlife.com
www.frodshamlife.co.uk
www.warrington-
worldwide.co.uk
www.warrington.tv

Address
New Media Centre
Old Road Warrington
WA4 1AT

*Lymm Life is published
monthly by Orbit News Ltd.*

*The contents of this magazine
are fully protected by copyright
and nothing may be reprinted
or reproduced without prior
permission of the publishers.*

*The publishers are not liable for
any statement made or opinion
expressed by third parties in this
publication.*

Printed by TwentyFourSeven

I am sure many readers will have been impacted by the road closure on Cherry Lane which seemed to appear from nowhere, with little warning.

I am sure Warrington Borough Council carried out the legal requirements to announce the road closures - but they were well hidden from most.

While some people, including local councillors, were aware of the impending works, no one appeared to know it would involve a full road closure.

While on a map this may look like a relatively insignificant B road, it is the main route to the motorway network for many people.

The work is being carried out by Cadent to provide additional car charging points up at Poplars Service Station, which is important work to tackle pollution in the future.

But I am sure there are better ways this work could have been communicated.

I have repeatedly told the council that their lines of communication on traffic notices is completely outdated and not in touch with the people.

Let's face it - if people don't get messages into their mobile phones or put through their letterbox, there is little chance of them seeing it.

Better dialogue with the local Parish council would have also been helpful.

Meanwhile on a more positive note fears that Pepper Street was facing a 16-week road closure have been allayed for the time being - but when the resurfacing

work does eventually take place next year, let's hope it doesn't cause the same problems the Cherry Lane closure has caused - and that proper communications are issued by the local authority - not just the legal requirements that no one sees.

Finally congratulations to the team at Lymm Festival for another fantastic event - everyone seemed to have a great time and it once again put the village on the map.

**Deadline for the
September issue of
Lymm Life is August 9**

Lymm Rushbearing returns

THE medieval tradition of Lymm Rushbearing returns on Sunday, August 14. The origins of Rushbearing date from the Middle Ages, but Lymm is one of a small number of communities that continue the tradition.

Having died out near the beginning of the 20th century, it was revived in the 1970s by local resident Chris Limb.

The job of replacing rushes on the earthen floor of the church became a festival and in many places (including Lymm) had Morris dancers and music.

This year's procession starts at the Lower Dam at 4pm on 14th August, followed by a walk up the Dingle and then to St Mary's church at about 4.30pm.

Watch and walk, and help keep local history alive.

Any queries/information please contact c.1203@hotmail.co.uk

N & J STANHOPE

Coal and Log Supplies

Best Quality Coal
Smokeless Fuel
Logs Supplied in Bags and Bulk
Caravan Storage
Open 6 Days. Closed Sunday

**Broomedge Farm
Burford Lane, Lymm WA13 0SE**

**Tel: 752830
Mobile: 07979 785 421**

WINNERS
Caring UK Awards 2021
Excellence and Innovation
in Dementia Care
RUNNERS UP
NAPA 2021 Arts in Care



**OPEN for
New Admissions**
Virtual & In-house tours
available

Award-winning dementia friendly Care Home

Exceptional care & facilities – including sensory garden & full activities programme



Dementia Care • Residential Care • Respite

www.keatehouse.com

Call: 01925 752091 Email: enquiries@keatehouse.com

9 Brookfield Road, Lymm, Cheshire WA13 0QL



NAPA Award Winners 2017, 2018
Plus 2020 – Best Activity Team



Special cake helps St Peter's Church celebrate 150th birthday

ST Peter's Church at Oughtrington celebrated its 150th birthday on June 29 as a number of events took place to mark the occasion.

There was a Flower Festival on the theme 'Celebration,' a Patronal Eucharist and Lunch for church members followed by the church hosting a concert by Eblana Trio as part of the Lymm Festival.

A Eucharist service with Afternoon Tea in church also took place, with Father Michael being presented with a special birthday cake (pictured) to mark the special occasion.

Finally, the church hosted a concert by Alteri as part of the Lymm Festival.



Professional tree services

Free Quote

- Domestic
- Vegetation management
- Commercial
- Stump grinding
- Site Clearance
- Re-planting
- £10m public liability insurance



Beechwood Industries
www.beechwoodindustries.co.uk

For more information, please call us on
01925 860544











AUTUMN fruit festival

28TH & 29TH AUGUST

FRUIT TREES AND SHRUBS

NEW AUTUMN PLANTS

LOCAL PRODUCE

LIVE MUSIC

LICENSED BAR

LOCALLY HOMEMADE CAKES

HOT DRINKS



PRIMROSE HILL
NURSERIES
Est. 1935

GROWN IN CHESHIRE

WARRINGTON ROAD, HIGH LEGH, KNUTSFORD, CHESHIRE WA16 0SQ.  

What's On

in conjunction with **Lymm Parish Council**



LYMM PARISH COUNCIL

No meeting in August, next meeting:
Tuesday September 13th, 7:30pm
Lymm Parish Hall
Check www.lymmparishcouncil.gov.uk for details.

LYMM THURSDAY EVENING BRIDGE CLUB

Lymm Village Hall every Thursday 7pm

MAPLE LODGE ART GROUP

Meet each Wednesday 9.00am - 11.30pm
Oughtrington Community Centre, Lymm
Details: 01925 755126

ROTARY CLUB OF LYMM

Meets at Warburtons Parish Rooms on the 2nd and 4th Wednesday each month at 8pm
Contact 01925 919053

LOVING HEARTS & HANDS

Knitting for charity at Lymm Methodist Church, 2nd and 4th Thursday each month.
1.30pm - 3pm. Details: 01925 753298

LUNCH AT THE BROW

Eagle Brow Methodist Church
2nd Friday in the month
Light lunches 12 noon till 1.30pm.
All proceeds to The Y Project Room at The Inn

GARDENING CLUB

Meet Third Wednesday of the month
Lymm Baptist Church, Higher Lane. 7.30pm
Visitors welcome. £2 includes tea and cake

LYMM FLORAL ART GROUP

Lymm Village Hall
Third Monday of the month (except August and December) at 7.30pm. Visitors most welcome. Contact: 07876 176501
lymmfloralart.org.uk

LYMM PHOTOGRAPHIC SOCIETY

Every 2nd and 4th Wednesday (ex July & Aug), 7.30pm
Spread Eagle pub, Eagle Brow.
Details: www.lymmphotosoc.org.uk

LYMM WINE AND BEER CIRCLE

3rd Wednesday of the month, 8pm
The Spread Eagle Hotel
Details: 01925 756444

LYMM CONCERT BAND

Rehearsals every Thursday evening
United Reformed Church, 8pm.
Details: 01925 752934

LYMM WI

Every second Wednesday, 2-4pm at Lymm Youth and Community Centre. Visitors welcome.

LYMM BOOK CLUB

Second Thursday of the month 7.30pm,
Spread Eagle, Eagle Brow. Details 01925 752371

LYMM AND DISTRICT MIXED VOICE CHOIR

Every Wednesday 7.30 Lymm Methodist Church. Contact 01925 601664.
cah@cstones.co.uk

PROBUS CLUB OF LYMM

A small, friendly social club for retired people.
Meets on second and fourth Tuesdays at 2:15pm.
Details: www.lymmprobus.club

LYMM DINGLE PROBUS CLUB

A friendly busy social club for retired men.
Meets on alternate Thursday afternoons at Lymm Baptist Church.
Details: www.lymmdingleprobus.club
Club secretary 01925 759995

FRIENDS OF LYMM LIBRARY CRAFT GROUP

Lymm Sanctuary Hub
Fridays 1.30-3.00pm
Details: 01925 754016

HEATLEY WI

Meets the second Thursday of each month at Oughtrington Junior School, 7.30pm
Visitors welcome. Details: 01925 752014



**LYMM
PARISH
COUNCIL**

Tuesday September 13th, 7:30pm
See parish council website for details.

Busy year so far for Lymm Rotary Club

IT has been a busy year so far for Lymm Rotary Club which has handed out donations to local organisations working hard in the local community.

As well as handing out to donations to those who helped with the annual Santa Float they have also donated £500 each to Warrington Disability Partnership and Lymm Radio, as well as taking part in litter picking in the village.

Club spokesperson Linda Monks said: "It's been a very good year to date for The Rotary Club of Lymm, we've been busy doing many things within our community. You may have seen some of us out litter picking around the area - we live in such a beautiful spot that it's good to help keep it looking tidy."

"Our annual Seniors Afternoon Tea Party was a great success with 150 teas and plants being delivered around the district. It was lovely to see so many of our ladies and gentlemen enjoying their picnic afternoon tea with friends and family."

"And, we've been delighted to be able to make several donations already this year. At our Presentation Night, the monies raised from our 2021 Santa Float were distributed to those clubs and organisations who helped us on the many nights we were out collecting. In addition, we've provided funds for the planting of 70 trees to mark

the Queen's Platinum Jubilee.

"We were delighted to be able to give the Warrington Disability Partnership £500 towards the purchase of much-needed wheelchairs. Our local Primary Schools received £100 each towards new books/ toys for their Libraries. Lymm Heritage Centre was given a cheque for £200 towards the cost of mounting their Platinum Jubilee Exhibition and Lymm Radio, who are hoping to go DAB in October, were presented with a cheque for £500 towards the new equipment that they will need. A boot load of foodstuff was also delivered to Warrington Food Bank whose shelves are always in need of replenishment."

"We've got plans afoot for the next few months, too. Some of our members are taking part in the St. Rocco's Challenges and hopefully we'll be hosting our very successful Macmillan Coffee Morning again in September" added Linda. Lymm Rotary Club meets once a fortnight on a Wednesday at the Parish Rooms at Warburton. If you'd like to join them contact Mike at mikehall13@icloud.com and visit one of their meetings. You'd be made to feel very welcome.

G.P. BROADSMITH & SON
POOL FARM, LYMM
Bottled on the Farm
From our Free Range Cows

Here at Pool Farm we take good care of our free-range dairy cows. They produce fresh, quality milk which is bottled in our own farm dairy and delivered to local doorsteps. We also stock a range of associated products such as eggs and potatoes, all sourced from local farms.

Call 757655 or email milk@broadsmith.com to discuss early morning deliveries to your doorstep and follow us on Facebook or Instagram at @broadsmiths where you can keep up to date with life on the farm!

G.P. BROADSMITH & SON
POOL FARM, POOL LANE,
STATHAM, LYMM, WA13 9BW
TEL: 01925 757655
YOUR LOCAL DAIRY Est. 1932



ANDY CARTER MP

WORKING HARD FOR WARRINGTON SOUTH

Here to Help

As your Member of Parliament I am here to help residents with any local or national concerns. I am absolutely committed to providing advice and support to all Warrington South residents. So if you need help, please don't hesitate to get in touch.

Andy

Contact Andy

- 01925 231 267
- andy.carter.org.uk
- andy.carter.mp@parliament.uk
- @MrAndy_Carter
- [AndyCarterWarringtonSouth](https://www.facebook.com/AndyCarterWarringtonSouth)

Warrington South Constituency Office:
1 Stafford Road, Warrington WA4 6RP

Call us on: 01942 607250

www.elbfireplaces.co.uk

70 Twist Lane, Leigh, Lancashire WN7 4DP

Fire Surrounds, Stoves, Gas & Electric Fires

No need to change your carpet - made to measure fireplaces

Over 75 displays over 2 floors

Live wood burning stove on display

Established
40 YEARS

Is your conservatory too cold to use in Winter?
Why not install a stove?

LEADERS IN FAMILY LAW.

Delivering the results when it matters

Specialising in:

Divorce & Separation

Financial Settlements

Child Related Matters



Stockton Heath 01925 912 277

Hale 0161 926 1430

Manchester 0161 834 2623

caroline.swain@bpsfamilylaw.co.uk

www.bpsFamilyLaw.co.uk

Less is More!

- Get paid quicker – Improving your cash flow
- Less time spent sorting old receipts – Free up countless hours each week.
- Less jargon and more proactive advice – Watch your business flourish.

Don't let these issues hold your business back.

To find out how we can remove your financial headaches call us:

01925 761600

or visit us at:

www.stylesandco.co.uk

styles and co.
chartered accountants



Lymm Truckwash partners with Nature's SAFE charity

LYMM Truckwash, Europe's largest Truckwash, has partnered with Nature's SAFE, an environmental charity that aims to safeguard the future of the natural world.

Nature's SAFE is one of Europe's first living biobanks dedicated to endangered animal species. The charity is on a mission to save animals from extinction by collecting, indefinitely storing and regenerating reproductive cells and cell lines from endangered animal species. The charity relies on public, private and corporate donations to fund its critical work.

As a business committed to environment, social and governance (ESG) goals and expanding its positive environmental reach, Lymm Truckwash is investing in wildlife by partnering with the charity as part of its new Green Policy. The new policy was recently introduced at Lymm Truckwash with the aim of lessening carbon emissions and supporting eco initiatives wherever possible. The business will also be donating 5p per truck washed towards the charity.

By supporting Nature's SAFE, Lymm Truckwash hope to raise awareness of the harmful affects that carbon levels can have on biodiversity including animals, plants, fungi and even microorganisms which all form an intricate ecosystem to maintain the air we breathe, our climate, and our own existence. It is especially important for the carbon heavy

transport industry to recognise the importance reducing carbon in order to halt and reverse the loss of this natural infrastructure.

Laura Cardwell, Managing Director of Lymm Truckwash, commented: "We are very excited to partner with Nature's SAFE at such a critical time in its development. The aims and goals of the charity are so imperative and being able to work together to bring awareness and funding is a real privilege."

Dr Rhiannon Bolton, Co-founder and Charity Coordinator of Nature's SAFE, commented: "We are delighted to be partnering with Lymm Truckwash to achieve our common aim of protecting and enhancing the environment."

Trustee Debbie Rolmanis added: "Lymm Truckwash is demonstrating exceptional environmental leadership for the service industry and we are incredibly grateful to be working with them to expand our mutual impact".

It costs around £100 to process one sample and financial support from Lymm Truckwash will enable Nature's SAFE to add critically needed samples to the 114 species that are already safely stored. Lymm Truckwash will be implementing an array of fundraising activities in order to raise funds for the charity, including competitions, charity raffles and raising awareness at our regular Driver Days.

Find out more about Lymm Truckwash: www.lymmtruckwash.co.uk

To find out more about Nature's SAFE, please visit: www.natures-safe.com



E SMITH AND SON
PLANT CENTRE
WWW.LYMMPLANTS.CO.UK

Over 60 years in Lymm and still growing!

THE NURSERY, BOOTHS LANE, LYMM, WA13 0PF
01925 752459

Late Summer Colour!

HANGING BASKETS

PLANTED CONTAINERS

Perennial Plants – in flower now!

OPEN 7 DAYS: MON TO SAT 10AM - 4PM | SUN 11AM - 3PM

SOUND ADVICE

SAFELY DELIVERED



HEARING PROBLEMS?

Feeling more isolated and anxious during lockdown? Are you having trouble hearing TV or talking on the telephone?

VISIT US AT ALTRINCHAM HEARING CENTRE
FOR ALL YOUR HEARING NEEDS

Visit us for a complete inspection of your ear canal and eardrum. If your problem is ear wax, we can remove it for you.

We offer appointment times at short notice to suit you and have a very competitive pricing structure of £70 for both ears or £50 for a single ear.

Alternatively, we specialise in the very latest digital hearing technology and have the best solutions to meet your personal hearing needs.

BOOK YOUR APPOINTMENT TODAY

0161 989 1288

VISIT US FOR:

- Free Hearing Tests • Latest Technology Demos
- Tinnitus Advice • Custom Hearing Protection

WE OFFER:

- A Bespoke Dedicated Service
- Independent Advice • Home Visits



Local &
Independent
Family Run
Business

In addition to an enhanced cleaning regime we are taking additional precautions with regards to Personal Protective Equipment, including contactless hand sanitiser, IIR type masks, gloves and aprons all which have all been approved by our governing bodies.



CALL US ON **0161 989 1288**
TO BOOK YOUR **FREE APPOINTMENT**



ALTRINCHAM
Hearing Centre

24 The Downs • Altrincham • WA14 2PU
0161 989 1288
pritesh@altrinchamhearingcentre.co.uk
www.altrinchamhearingcentre.co.uk

Spirit of Lymm Historic Transport Day boat and steam gathering

THE Spirit of Lymm Historic Transport Day was well and truly kept alive at the Lymm Boat and Steam Gathering as part of Lymm Festival.

The last two years had seen successive forced cancellations of the full event due to Covid. And with the retirement of key volunteer personnel and no-one coming forward to take it on it was decided to host a much smaller event, for this year at least, to keep the flame burning.

There was clearly no shortage of enthusiasm from the historic boating community who packed into the village centre, boats three abreast in places, creating a colourful spectacle. The week had started well too with over 200 children from local primary schools benefiting from the "We Love Our Canal" education programme organised by Lymm Heritage Centre with the support of Saturn, the Shropshire flyboat and a team from the Boat Museum.

Henry Street Car Park next to the canal gradually filled on Saturday with traction engines as more and more machines arrived from all around the area. Over the whole weekend, the village was alive with the sound of steam hooters and trundling heavy rollers as the owners took their engines on short tours

of the village to the delight of passers-by.

Meanwhile, the Heritage Centre, adjacent to the event, attracted nearly 500 visitors to a new exhibition marking the 50th anniversary of Lymm hosting the National Boat Rally.

Another highlight was the now traditional sail past at 3.30 on Sunday afternoon when a procession of around fifteen boats delighted the crowds that had gathered in the village.

The "Gathering", which was completely free, was funded by the Lymm Transport Group, a voluntary organisation set up specifically to run Historic Transport Day. All the participants praised the organisation and the venue and vowed to return to next year.

Talks aimed at handing on the full Historic Transport Day to a new team next year are at an advanced stage but the group are still keen to recruit more new blood to ensure that the event can return in its full splendour next year. If you would like to be part of the return of Lymm Historic Transport Day contact them via lymmtransport@gmail.com

Pictures: John Hopkins and Alan Williams



Day kept alive at ering



From £895*
for a fully fitted electric garage door.

Gotta get a Garolla.

Trustpilot
★★★★★
4.8 out of 5.0 based on 8,964 reviews

WHAT'S INCLUDED WITH EVERY DOOR:

- EXPERT MEASURING & FITTING
- 2 REMOTE CONTROLS
- ACOUSTIC & THERMAL INSULATION
- FREE DISPOSAL OF YOUR OLD DOOR
- AVAILABLE IN 21 COLOURS

Garolla garage doors are expertly made to measure in our own UK factories, they're strong and solidly built. The electric Garolla door rolls up vertically, taking up only 8 inches inside your garage, maximising valuable space.

Give us a call today and we'll come and measure up completely FREE of charge.

GAROLLA
ROLLER SHUTTER DOORS

www.garolla.co.uk

CALL US TODAY ON:
01925 205 009
MOBILE:
07537 149 128

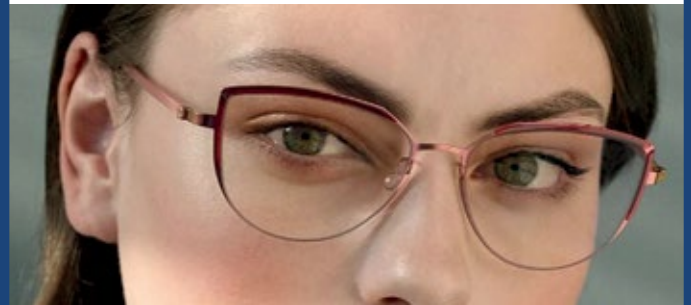
LINES OPEN 7 DAYS A WEEK

*Offer valid for openings up to 2.4m wide & including 2 remote controls, 55mm white slats, internal manual override.

Maskell+Josephson
THE OPTOMETRISTS

50% OFF ALL LINDBERG FRAMES
until the 15th September

WITH 75% OFF ANY SECOND FRAMES
bought with prescription lenses



Maskell + Josephson, Altrincham
16 Regent Road, Altrincham, WA14 1RP
0161 941 6517

www.maskelloptometrists.com
anthony@maskelloptometrists.com

50% OFF
Lindberg Frames

75% off any second frames bought!
Valid until 15/09/22

Maskell+Josephson
THE OPTOMETRISTS

Cannot be used alongside any other discount

Free vet care for school pets in Lymm

A veterinary practice that opened in Lymm last October is offering free vet care to school pets.

Burford Lane Vets, which is based on Burford Lane, at the former Pets Animal Hotel kennels, has pledged to provide veterinary check-ups and treatment free of charge to any pets owned by local schools, as part of its commitment to supporting the local community.

Vet Rachel Dean, who has just joined Burford Lane Vets after working in Lymm for over nine years, is spearheading the campaign. Rachel said: "We want to reassure anyone who is looking after the class pet over the summer holidays that if they have any problems, we are here for them. The offer applies throughout the year too, so any schools that have

pets should register them with us now.

"We understand how much joy and support a pet can bring, and we know from the feedback we receive from local primary schools that many children who can't have a pet at home learn a lot from having a classroom pet. The most popular pets at school tend to be hamsters, rabbits or guinea pigs and they help to teach children about taking responsibility and the natural world."

Rachel continued "We believe we are the only veterinary practice to provide this free service to school pets and we are excited to be leading this initiative and give as much back to the local community as we can.

"Since announcing that I've joined Burford Lane Vets, we have had so much positive feedback on our social media channels, and I feel really welcomed into my role here at Burford Lane Vets."

Rachel has been a vet for over 24 years and will be working alongside Dr Pieter De Villiers and Dr Sean Cleary, plus head veterinary nurse Gemma Scott, who have all worked in Lymm for many years.

Burford Lane Vets benefits from significant investment in the latest technology and veterinary equipment and has three consulting rooms, a state-of-the art lab, high-tech orthopaedic equipment, online booking, and soothing music to minimise stress in the separate cat and dog wards.



From left to right head veterinary nurse, Gemma Scott and clinic director, Dr Rachel Dean from Burford Lane Vets with Panda the guinea pig.

Village centre road not set to close for 16 weeks!

FEARS Pepper Street in Lymm village centre was set to close for up to 16 weeks for resurfacing works, restricting access to a car park and school, have been allayed.

Local Cllr Graham Gowland says he has received an update from a Warrington Borough Council officer working on the Pepper Street project – that a recent notice for the 25th July for 16 weeks will not result in closure after all – it's an exploratory and utilities improvement stage of the works. There may be lights at some point, but it is simply the exploratory stage, with the actual resurfacing happening next year.

Cllr Gowland said: "To be clear,

Pepper Street is not actually going to be closed and the car park will remain open."

In a communication to Cllr. Gowland the officer says: "As we are considering a future project on Pepper Street, it may be necessary to undertake some invasive site investigation to identify underground services etc. to inform the design. For this reason, we have made provision for a road closure should the need arise due to the narrowness of the road. A road closure requires special legal orders and can take some considerable time to arrange. This will require the posting of a notice on site as part

of process.... The period of time stated on the order is misleading but means that the road closure may take place any time within the period advertised.....

"To be clear, it is now very unlikely that the road closure will be required until we get to a construction stage. This will be some time away yet and as far as next summer to coincide with school closure and better weather. I will utilise an alternative method of identifying services by using Ground Penetrating Radar (GPR), so no closures are planned.

"It is my intention to plan and undertake a consultation element

and I will contact you soon to discuss this."

Cllr Gowland added: "It's really good news that Pepper Street is going to be resurfaced, and locals will have a say over the final design of the surface.

"Part of the project includes exploratory digging, which is going to take place over the next few months, but the road will stay open. Next year – hopefully during the school holidays – the actual resurfacing will take place, which will probably require the road to be closed, but for the shortest period of time possible, with a suitable diversion in place."



Join a Clinical Trial. Find out more at researchforyou.co.uk or call our healthcare team on 0800 121 6397 or scan the QR code



Courses so good we enrol 1 student **EVERY 7 MINUTES!**



Ready, Set, Grow! Retrain and upskill this summer.

Warrington & Vale Royal College is enrolling NOW!
We have 1000s of courses for people of all ages and motivations; from adults looking for a change in career, to school leavers considering their future. Courses are offered on-site, or via distance learning - there is a mode of study to suit everyone.

Warrington campus
opening hours:

Monday: 9.00am - 4.00pm
Tuesday: 9.00am - 4.00pm
Wednesday: 9.00am - 4.00pm
Thursday: 10.00am - 7.00pm
Friday: 9.00am - 4.00pm

Visit our Warrington campus to start your enrolment or visit our WVR.AC.UK today to find out more.

Enrolment Open Day Saturday 3rd September

Join us at our Warrington campus on **Saturday 3rd September from 10.00am - 1.00pm** for our Enrolment Open Day!

This family-friendly event is an opportunity to explore our Warrington campus, including the chance to participate in live demonstrations of our courses and talk to our expert staff about your options.

There will be plenty to keep the little ones entertained, with a variety of stalls and refreshments.

This is a free event and you do not need to register.

We look forward to seeing you!



Meet the stars of the Adult Summer Guide!

Future Counsellor

Julie Snell enrolled on a counselling course after she was involved in a life-changing accident. She said: "the college's team of counselling tutors are out of this world in terms of their teaching skills, support, and personal experience which they bring to each lecture and class."



Future Manager

Sean Conreen enrolled on the HNC Electrical & Electronic Engineering course to further his engineering knowledge. He then progressed onto the HND course which is preparing him for university. He said: "The HND makes it possible for me to progress into an even more technical role within my organisation as well as allowing me to one day progress onto a management position at ABB."



Future Nurse

Aveesha Collins enrolled on the Access to HE: Nursing & Midwifery course after a hugely positive previous experience studying at the college. She said: "My tutors have been very supportive. I have learnt so much and have more confidence in my ability!"



Future Actor

George Moore enrolled on the HNC Performing Arts course to follow his dreams of becoming an actor. He said: "There is so much to get involved with at Warrington & Vale Royal College, from pantomime to musicals. Coming to this college was the best choice I could have made!"



Future Social Worker

Claire Leech enrolled on the Access to HE: Social Work course as she wanted a change in career. She said: "The course has helped me to better prepare for the future. I would definitely recommend the college as you are learning from supportive tutors who have first-hand industry knowledge."



Future Hairdresser

Stewart Brown enrolled on a hairdressing course to follow his true passion. He said: "I like the fact that the course is so practical and allows me to do the theory element at home in my own time."



COULD THIS BE YOU?

Whether you are about to leave high school, are looking for a change in career or simply want to add another string to your bow; Warrington & Vale Royal College has the perfect course for you!

Visit WVR.AC.UK to view the entire range of courses on offer and start your journey to success today.



SCHOOL LEAVERS



THE CLOCK IS TICKING...
SECURE YOUR PLACE FOR SEPTEMBER!



Warrington
& Vale Royal
College

wvr.ac.uk

01925 494 400



Lymm Festival - eleven days crammed with food, fun, flowers, scarecrows, spoken word, music, comedy and much more!

GREY skies, showers and the threat of rain failed to dampen spirits as the Lymm Food Fest kick-started the 24th Lymm Festival.

Thousands of people packed into the village centre to enjoy fine cuisine from around the world, served up by local traders.

There was also entertainment and dancing displays in the village to help keep the crowds entertained.

It was the first of 41 events lined

up for the festival, involving 11 days crammed full of food, fun and flowers; scarecrows, spoken word and Star Wars; music, comedy and magic and the list goes on...

Winner of this year's Scarecrow Trail was Bet Lynch and the worthy winner was located on Rushgreen Road.

Pictures: John Hopkins



Frustration as key route linking Lymm with M6 closed for 16 weeks

MOTORISTS have been left frustrated after a key route linking Lymm with the M6 has closed for up to 16 weeks while works take place to install cables for extra electric vehicle charging points at Poplar Services.

There is currently a full road closure on Cherry Lane up to Booth's Lane. The work originally involved a two-way traffic management system, however, SP Energy Networks have had to make a full road closure due to the close proximity of passing HGVs after a lorry struck a safety barrier.

Lymm Councillor Graham Gowland said: "The impact on locals by closing Cherry Lane has been significant. I suspect the project manager looked at a map and simply saw a 'B road', but it's a key route linking Lymm to the motorway network, and it's causing real issues.

"We've got a 16-week closure for this stretch of the road, but that's only half the route - we still don't know if other roads will be closed in

addition to this, or further stretches of Cherry Lane. Closing this route has also impacted businesses, and the unplanned nature of it has made matters worse. EV charging is really important - over the next few years more people will need to charge their vehicles, and we need charging points on the motorway network, but the planning behind these works leaves a lot to be desired. I'll be raising it with the company to reduce the impact on the local community."

Warrington Borough Council has already made an emergency road closure covering three weeks and now has given notice of a further nine week closure.

The Council has made an Order under Section 14 of the Road Traffic Regulation Act 1984. The effect of which will be to introduce a prohibition of driving on Cherry Lane from its junction with Booths Corner to its junction with Booths Lane.

The Order will be effective from 13th July 2022 for 9 weeks, as

and when signed on site. Access will be under the control of the relevant Contractor for the duration of the works. The alternative routes will be as follows: Cherry Lane (east bound traffic) via Booths Hill Road, Church Road, Higher Lane, High Legh Road, Cliff Lane and vice versa; Cherry Lane (west bound traffic) via Booths Hill Road, Camsley Lane, Stockport Road, Knutsford Road, Cliff Lane and vice versa. The closure is required

to allow Scottish Power to install a new 33kv circuit as part of the Green Recovery Project.

A spokesperson for SP Energy Networks said: "This road closure will be in place for up to 16 weeks. However, we are working hard to try and reduce the duration. We have agreed with Warrington Borough Council to work seven days a week (7am - 7pm) to complete the work as quickly as possible."



Planning notice for Poundland store in Lymm revealed as elaborate hoax

A planning notice that appeared in Lymm village centre advertising an application to convert the former Barclays Bank into a Poundland has been revealed as an elaborate hoax.

At first glance, the planning notice looked authentic but a closer inspection revealed that the planning application number didn't tally with the current council list of applications.

Local Councillor Graham Gowland commented "I was a bit disappointed that the planning notice wasn't for a Netto, but someone's done a creative job putting the fake notice together."

"The Barclays Building has been an eyesore for years, and we're looking forwards to it finally moving to new ownership and being appropriately developed."

"I suspect leafy Lymm isn't likely to be a prime location for a Poundland."

"No planning application has been put into Warrington Borough Council yet for the site, and being in a conservation area most changes would need to go through a proper planning process."

Warrington Borough Council's planning department has confirmed

that the planning notice is fake.

When the notice first appeared, it sparked a mixed response on social media, with some opposed to the idea, while others welcoming it during the current "cost of living crisis."

In 2016 there was controversy in the village when a Netto store opened - but it closed after just eight months and now is a Sainsbury's store.



Your pet questions answered

By Dr Diane Wilshaw
Lymm Veterinary Surgery

Q: My rabbit has gone off his food. What should I do?

A: Lack of appetite in rabbits is not good news and can often be a symptom of pain. The problem could also be linked to dental problems. Have your rabbit checked out by your vet to get to the cause of the problem.

Q: Our Boxer has developed itchy, sore looking areas between her toes. She continually nibbles and licks them and the fur has gone an orangy colour. She is on antibiotics and antihistamine but it doesn't seem to have helped. What would you suggest?

A: It sounds like a classic case of Pododermatitis - an inflammation of the skin. Your vet has advised the right treatment. If the condition doesn't improve it may need a course of steroids or other anti-inflammatories to get it under control.

Q: Our 7 year old cat is showing odd behaviour when we stroke her at the bottom of her back by her tail. She dips her back down and turns her head up and towards her tail and sometimes hisses. There isn't anything visible - what could it be?

A: This could be a skin problem, possibly secondary to a flea allergy or overgrooming which could be stress related. Other causes of this behaviour could be a cat bite abscess or even arthritis. You need to have her checked over by a vet to find the cause of the behaviour.



Q: I have a 9 year old Labrador. She is healthy but suffers from a weak bladder. Is it just old age or can something be done to stop this?

A: This can be common in older bitches especially if they have been spayed. There are a couple of drugs available which we have found to be very effective in curing this in most cases.

Q: Is it safe for my cat to play with my knitting wool?

A: No. It is relatively common to see intestinal injuries as a result of cats ingesting wool or string. It would be much better to get her a good quality cat toy.

EXCHANGE YOUR GOLD AND SILVER FOR INSTANT CASH



All items of jewellery accepted

Did you know...?

We accept silver jewellery, cutlery, tea sets, spoons, cigarette cases, candlesticks, trophies, trays, medals, coins and pocket watches.

**ROLEX WATCHES WANTED!
ANY CONDITION**

Open: Tuesday-Saturday: 10am - 5.30pm

1 London Road, Stockton Heath
(First floor entrance on Fairfield Road)

07544 486 621



Need IT Support at Home?

- Skilled and Friendly Technicians
- PC and Laptop Support
- Home Visit or Remote Dial-in
- Antivirus/Malware Check
- Unlimited Support Time
- Equipment Supplied: Laptops, PCs, Printers & Bespoke Builds



Call our Team: 01925 251143
sales@aspire-computers.com | www.aspire-computers.com

Puppy Pack



- Full Vaccination Course
- One Month Worm Treatment
- One Month Flea Treatment
- Puppy Diary
- 4 Weeks Free Insurance
- Discount Vouchers
- Puppy Health Check by a Vet
- Lead • Sticker
- Glossy Puppy Book



ALL FOR
£60.00

01925 752721 | 10 Booth's Hill Rd, Lymm WA13 0DL

Tennis development to start at Lymm Rugby Club

A new floodlit tennis development is to commence at Lymm Rugby Club later this summer after a Covid-induced delay.

Manor Road Tennis Club (MRTC) became the Tennis Section of Lymm Rugby Club (LRC) in August 2020 and four new, all-weather, floodlit courts are now to be built in the

rugby club's Walled Garden this August. The project stalled for a year whilst planning approval was granted for houses on the current MRTC site, but momentum is now

building.

The courts are planned to be ready for playing by March 2023. The project is being funded by the Lawn Tennis Association (LTA) with an interest-free, 10-year loan (£250k) and an additional LRC bank loan facility.

The business case for the project assumes a significant rise in tennis members of all ages, genders and abilities. Tennis will be available throughout the year from 8am to 10pm, including the local community, using the LTA's Pay & Play online facility. Local schools, including Lymm High School, will be provided with priority access to encourage tennis participation.

"This is a very exciting community development for Lymm, creating a thriving multi-sports club," commented Pete Radcliffe, Tennis Section, Walled Garden Project Manager.

"Available court time could subsequently increase from the current 4,500 hours on two courts with no floodlights, playable from end of March to November, to 20,000 hours, year-round, on four new, floodlit courts.

"The budget for the scheme is estimated at £350k and further fundraising may be required," commented David Simpson, Chairman of Lymm Rugby Club.

"This initial development follows the planning permission to build

houses on the current Manor Road site," added Simpson, "The building of the tennis facilities is the essential next phase to release the value of the site and help fund further development of the infrastructure and the new clubhouse on the existing rugby club site.

"This takes us one step closer to our overall objective of becoming a multi-sports community hub offering rugby, tennis, squash and hockey for all ages," he added.

"We are delighted and grateful to have received the full support of Warrington Borough Council to date, and the LTA for this exciting scheme," concluded Simpson.

Tendering for the whole project is due to take place in July this year, in preparation for construction to commence by the end of August.

The final season at the existing MRTC site is underway and all members this year will receive a loyalty discount on their membership fees next season.

If you would like to get in touch regarding membership, donations, sponsorship or fundraising, please contact the following:

Membership: Stella Connor stellaconnor@gmail.com or Manor Road Tennis Club / Membership (lta.org.uk). Donations, sponsorship or fundraising: Pete Radcliffe pete.radcliffe@gmail.com

Obituary

Joan Lomas

THE funeral took place at Altrincham Crematorium on July 7 of Joan Lomas, nee Wilkinson, of Howard Avenue, Lymm, who died on June 25, at Belong Warrington.

Joan, aged 83, was mother to Fiona, Guy and Kate and had five grandchildren.

Her family said she had died peacefully and was now "at peace and dancing in the clouds."

Funeral arrangements were by John Burrows and Sons, of Lymm.



Established 1878

John Burrows & Sons
Fourth Generation Independent Family
Funeral Directors

Friendly & Professional Service
Day or Night ~ J. Tandy

The Old Smithy, Mill Lane, Lymm,
WA13 9SE Tel: (01925) 752501

Golden Charter
Funeral Plans

www.johnburrowsandsons.co.uk



Commercial • Commercial Property • Litigation
Employment • Wills • Trusts • Probate
Personal Injury • Conveyancing • Crime • Family & Divorce

01925 231000
info@fdrlaw.co.uk

Serving Warrington and surrounding areas

www.fdrlaw.co.uk



CLASSIFIED

Call 01925 631592 to advertise

ACCOUNTANCY & BOOKKEEPING

BOOKKEEPER/ACCOUNTANT. Licensed for maintaining financial records, VAT Returns, Payroll Service, Management Accounts, SAGE Software Consultancy. **Contact: 07815 617914.** (5/21)

CARPET CLEANING

A1 STAINBUSTERS. A Warrington company cleaning carpets, hard floors, Upholstery (Leather + fabric) and curtains in situ. FREE quotes for domestic and commercial. Approved carpet cleaners for Hancock and Woods for over 10 years. **Call John on 07765 314080** (16/22)

SIMPLY THE BEST CARPET CLEAN YOU will ever have. Cleaners UK Ltd. Est over 35yrs. Have your carpets & sofas beautifully deep cleaned leaving them fresh smelling & colour restored. Latest & best methods. Dry/steam. Leather cleaning, oriental rug specialist. Professional, reliable & affordable. **For more info call Neil Riley on 01925 264989 / 07831 336060 www.cleaners-uk.net** (14/23)

CAR SALES

PARKVIEW CAR SALES

We buy and sell QUALITY CARS

Best price paid

Telephone Peter on 01925 575737 / 07957 545479

23 Padgate Lane
Padgate, Warrington
Cheshire, WA1 3RS (5/21)

CHILD CARE

OFSTED REGISTERED CHILDMINDER
Lives close to Ravenbank School. Full time or Part time placements available. Pick up and drop off from Ravenbank School or Rosebank Nursery. From ages 0-12 years. **For more information contact Carole on 07731 089656 or leave a message on 01925 755108** (14/23)

CLEANING SERVICES

arleys angels

- Spring Clean Specialists
- Presenting your home for sale
- Moving house
- After building work cleans

01925 266834
... because you're worth it! (5/21)

CLEANING SERVICES

SIMPLY THE BEST CARPET CLEAN YOU will ever have. Cleaners UK Ltd. Est over 35yrs. Have your carpets & sofas beautifully deep cleaned leaving them fresh smelling & colour restored. Latest & best methods. Dry/steam. Leather cleaning, oriental rugs specialist. Professional, reliable & affordable. **For more info call Neil Riley on 01925 264989/ 07831 336060 www.cleaners-uk.net** (14/23)

ELECTRICAL CONTRACTOR

TRUST PROPERTY ELECTRICAL SERVICES. NICEIC Part P Approved Contractor. All Electrical work undertaken. Inspection & Testing & PAT Testing. All work certified & guaranteed. **Call Tim on 07754409906 or 01925 601055** (16/22)

GARDENING SERVICES

- All aspects of tree surgery
- Stump grinding
- Waste removal
- Locally based
- Free quotation

Beechwood Industries
www.beechwoodindustries.co.uk
01925 860544 (5/21)

MORTGAGES

TALKING MORTGAGES - INDEPENDENT MORTGAGE ADVICE.
For local, impartial and professional advice on all aspects of mortgages contact Darren Simpson on **07708 975122** (16/22)

PHOTOGRAPHY

FAMILY & PET PORTRAIT PHOTOGRAPHY
Lymm based Andrew Collier Photography specialises in family and pet portrait photography using Lymm locations as a backdrop. Personal service with beautifully made frames and albums. **Call Andrew on 01925 471091 or visit www.andrewcollierphotography.co.uk** (14/23)

PAYROLL

WHY TRY TO BE A PAYE EXPERT?
Watkinson Black can provide a cost effective payroll service, releasing you to concentrate on your business. **For further details please phone: 01925 413210 or e-mail: info@warringtonaccountants.co.uk** (5/21)

RE-UPHOLSTERY

Orchard Soft Furnishings

RE-UPHOLSTERY
CURTAINS • BLINDS

FREE MEASURING & FITTING

TEL:(01925) 756388
www.orchardsoftfurnishings.co.uk (5/21)

TAXI / PRIVATE HIRE

Horn's

Airport Transfer & Taxi Specialists
CALL MARTYN: 01925 751761
MOBILE: 07881 786250 (19/22)

TYRES

EVERGREEN Centre of Excellence

Express Mobile Tyres

Local Family Business. Est 1997
01925 810000
www.expresstyres.co.uk
Order Online Today!

Branded & Budget Tyres
Cars, Vans, 4x4's, Caravans
Light Commercial & Performance Vehicles

The tyre service that comes to you at home or your place of work

No Call Out Charge!

BRIDGESTONE MICHELIN
GOODYEAR Continental (5/21)

To advertise in the classified section from as little as £15+vat

Call us now on 01925 631592

twentyfour seven design & print ltd

We supply and fit all types of signage: self adhesive graphics, glass, metal, wood, perspex, foamex plastic.

Call or email for a free site visit.

01925240247 info@247print.net www.247print.net

Obituary Notices

While Obituary notices are published free of charge, due to pressures on space, we can never guarantee they will be used and there can also be a delay of several months.

If you would like to guarantee a notice to appear in the next available issue, these can be purchased for £75 plus VAT which helps towards the running costs of your free community magazine.

To place an obituary notice or any other public/family notice please email info@lymmlife.co.uk

Your notice will appear the same size as this advertisement.

The North West's leading supplier of concrete

www.barrowmixconcrete.com

BARROW - MIX

1984-2022
38TH YEAR
ANNIVERSARY



FREE SITE SURVEY

6 DAY SERVICE

All areas covered

Free barrowing service

Only pay for what you lay

From half a cubic metre upwards

Levelling/laying service if required

(minimum charge)

We can supply

C25, C30, C35 Fibre Reinforced



VISA

MasterCard

Maestro

SOLO

Call NOW for a FREE quotation

01565 734111 or 01942 722629