

Culcheth *Life*

Magazine

ISSUE 226 | JUNE 2022
FREE EVERY MONTH

CULCHETH • CROFT • GLAZEBURY • BIRCHWOOD AND SURROUNDING AREAS



urban

BUILDING PROJECTS LTD

**Extension &
Building Renovation
Specialists**

Tel: 01925 730888

www.urbanbuildingprojects.co.uk



Community play haven re-opened

Page 3

All the latest news: www.culchethlife.com

Editor

Gary Skentelbery

Production

James Bryan

AdvertisingJames Balme
01925 631592 opt 1**Editorial**

01925 631592 opt 2

Email

info@culchethlife.com

Websiteswww.culchethlife.com
www.frodshamlife.co.uk
www.lymmlife.co.uk
www.warrington-worldwide.co.uk
www.warrington.tv**Address**New Media Centre
Old Road Warrington
WA4 1AT*Culcheth Life is published monthly by Orbit News Ltd.**The contents of this magazine are fully protected by copyright and nothing may be reprinted or reproduced without prior permission of the publishers.**The publishers are not liable for any statement made or opinion expressed by third parties in this publication.**Printed by TwentyFourSeven*

Editor's Comment



AS our headline reads on page 5 "no surprise" on the Government inspector's decision to allow the development of a new motorway service station on the M62 near Birchwood, it would appear the policy to tackle the cost of living crisis, is to build, build, build!

This decision follows hot on the heels on from the controversial Parkside Colliery development being given the go ahead, as well as a decision not to call in a Green Belt logistics development the other side of town near Appleton Thorn.

All three of these major developments will have a major impact on our local road networks,

creating more traffic chaos and pollution, as well as the destruction of Green Belt near Croft and across town at Appleton Thorn.

Let's not forget this is meant to be protected land to protect our future health and wellbeing.

It's all very well attempting to boost the economy following two years of a pandemic – but where are all the

new jobs going to come from?

We already have a situation whereby there are more jobs being advertised than unemployed people to fill them and the knock on effect of Brexit is still to fully hit home with regards the jobs market, as thousands of Eastern Europeans, who previously filled our jobs needs, are choosing not to come or return to the UK. Our borough council needs to take on board these concerns when deciding not to contest and approving Green Belt planning applications.

Successful knife amnesty welcomed

A successful knife amnesty event in Culcheth was welcomed by local councillors.

Local officers from Cheshire Police joined forces with Councillors in the centre of Culcheth following requests by residents to have a Police presence.

The event involved a knife amnesty, a County wide Police strategy to take knives and other dangerous weapons off the streets.

John Dwyer, Police and Crime Commissioner for Cheshire said: "In Cheshire, we have one of the lowest knife crime rates in the country, but that's even more of a reason to educate people about its consequences and ensure that Operation Sceptre is a success. It's been great to see officers out around the county with pop-up

knife surrender points, engaging with communities and taking dangerous weapons off our streets.

"One of my key Police and Crime

Plan priorities is to prevent and tackle crime and this sort of activity to inform and protect people is crucial to advancing that aim."



CAMPBELL CROSSLEY & DAVIS
Licensed Insolvency Practitioners

Constructive solutions to debt
for companies and individuals.



Ian Williamson
M: 07703 529212
Roger White
M: 07946 820299

www.campbell-crossley-davis.co.uk



Making it easier for your business to be successful

We care about you

You're a hard working entrepreneur and you need an accountant who does more than just tick the boxes.

You need a professional

Every one of our highly competent, skilful and professional people is here to help you.

You're our number one priority

You're more than just someone we prepare accounts for, the success of your business means everything to us.

Are you looking to make your business life easier?
Speak to one of our experts:

01925 761 600

or visit us at: **stylesandco.co.uk**

styles and co
chartered accountants

the
flooring
co.

Opening Times:

Monday to Friday 9:30am - 4:30pm
Saturday 10am - 3:30pm



Retail Partner



#transformyourhome

Carpets | Vinyls | Karndean | Laminates | Screeding

Call in store to find your perfect flooring solution.

Free Quotes & Measures

The Old Telephone Exchange, Common Lane, Culcheth, WA3 4HA
01925 555 820 | sales@flooringcoulcheth.co.uk
www.flooringcoulcheth.co.uk

Natural community play haven re-opened at Glazebury

THE finishing touches have recently been made to a community play area in Glazebury made entirely from natural materials.

The land leased to Culcheth and Glazebury Parish Council by Bents Garden and Home on Warrington Road, has been welcoming a very different type of play and community area since 2015, when it was first opened.

Led by Glazebury Community Play Area Group, local residents have come together and designed, created, and managed the area since 2011 and it has been hugely welcomed by the community.

The play area offers a range of features including new play logs made from storm-damaged urban

trees provided by Frankland Tree Services alongside Dave Thwaite, a specialist play log designer.

The area also offers a giant willow water vole and willow tunnel, sand play, den building areas and edible hedges, fruit trees and a community growing beds, it's a haven for wildlife and demonstrates how a sustainable approach can create a valuable community space and a haven for wildlife.

The new play logs and other improvements have been kindly funded by the Parish Council, The Mersey Forest and Bents Garden

Centre.

Group Chair Graham Borg said: "We would like to thank all of our partners involved, it's been great to refresh the logs and they've been eagerly anticipated by local children. As well bee-friendly plants within the raised beds, the old logs still remain on-site as wildlife habitat for hedgehogs, beetles, birds and other creatures".

The group has worked alongside local Cllrs Christine Smith and Cllr Janet Seddon who have been

overseeing the latest changes for the Parish Council.

Chris said: "It's a lovely space for everyone to meet up, in lockdown, it was one of the few play areas which was able to remain open because everything is so natural. It's a haven for wildlife too with nesting birds, water voles along the banks of the stream and bats which are regularly seen feeding in the summer months, we've even left long grass for 'No Mow May' to encourage more habitat for pollinators".



Group member Glenys Borg, Group Chair Graham Borg, Cllr Christine Smith, Cllr Janet Seddon



HUNTER HEALEY

CHARTERED ACCOUNTANTS

- Professional, approachable, affordable
- Accounts preparation & tax returns for individuals & companies
- Bookkeeping, payroll & vat
- Capital Gains, Estate Planning & Probate Work
- Business start up advice
- First meeting free of charge

Call Nigel Healey now on 01925 767222

Abacus House, 450 Warrington Road, Culcheth WA3 5QX

www.hunterhealey.co.uk



E SMITH AND SON PLANT CENTRE

WWW.LYMMPLANTS.CO.UK

Over 60 years in Lymm and still growing!

THE NURSERY, BOOTHS LANE, LYMM, WA13 0PF
01925 752459

HANGING BASKETS

BEDDING AND PATIO PLANTS

SUMMER FLOWERING PERENNIALS

TOMATOES • CUCUMBERS • CHILLIES

All Available Now

OPEN 7 DAYS: MONDAY TO SUNDAY 10AM - 4PM

Controversial homes plan given the go-ahead – after 19 years

A PLAN to build a terrace of up to three homes on a green field site at Culcheth has been given the go-ahead by Warrington planners.

The scheme at Culcheth Hall Farm Barns, Withington Avenue, was opposed by Culcheth and Glazebury Parish Council, 22 neighbours and a number of local councillors.

Similar proposals had been refused, and dismissed on appeal, on three occasions since 2003.

Warrington Borough Council planning officers said the new proposals were very different from the previously dismissed scheme and, on balance, were not considered to contradict the decisions made by inspectors on the earlier schemes.

"The bespoke design of the proposed terrace row, use of quality materials, its compact nature and location within and around the existing built form all combine to complement the existing development on this site, without detracting from the historic character of the barns.

"Residential amenity is similar to existing and is considered to be acceptable," an officer said.

The parish council, in its objections, said the new proposal would be an erosion of green space which failed to respect the distinctiveness of the

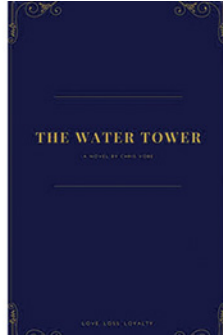
barns by eroding the value of a green area which was a character of the area.

There was also a risk of flooding which was not addressed in the plans and increased use of Withington

Avenue would be a potential health and safety issue. Nearby residents said the development would introduce new-build housing to a community of barns dating back to 1633.



Debut author to donate half of book royalties to Ukraine Humanitarian appeal



ROYALTIES from the sales of Culcheth author Chris Vobe's debut novel will help support humanitarian efforts in Ukraine, following the Russian invasion of February this year.

The Water Tower was first released in October last year and sales have already exceeded expectations.

The two-volume epic has been met with significant acclaim since its publication, with readers finding themselves absorbed in the trials and tribulations of the principal characters: journalist Adam Chapman, librarian Victoria Kendall, academic Clarissa Clements and shopkeeper Hilda Stanton.

Now, former local councillor Chris has announced that 50% of all royalties he receives from sales of the novel between 1st March and 16th June (Chris's birthday and, in the novel, the date on which the opening chapters are set!) will be donated to the CAFOD Ukraine Humanitarian Appeal.

Earlier this month, both volumes of The Water Tower were made available for the first time in a collected "Omnibus Edition" for Kindle, which can be purchased and downloaded exclusively from Amazon.

Speaking about his decision to support the CAFOD appeal, Chris said: "None of us can have failed to be moved by the tragedy unfolding in Ukraine since the Russian invasion began. The bravery, determination and resilience of the Ukrainian people has been inspiring; and yet, as we all know, the humanitarian crisis that has followed has been almost unprecedented in scale.

"Over five million people have fled their homes to escape the conflict and millions more have been internally displaced. Homes, schools and hospitals have been destroyed. The work that CAFOD undertake, therefore, is vital in helping to support the increasing number of Ukrainian families who are in desperate need of food, shelter and healthcare.

"That is why I will be donating 50% of any royalties I receive from sales between 1st March and 16th June this year to CAFOD's Humanitarian Appeal for Ukraine. As we watch the heart-breaking scenes unfold there, I want to play my part – and encourage others to do likewise – in helping to deliver support and aid to those who need it most."

Since its launch in October last year, sales have vastly exceeded expectations. The novel has proved popular for its uncompromising reflections on grief and loss, its depiction of its provincial setting of Little Bassington, and for the way in which it balances the many distinct, intersecting strands of the story.

Both volumes of the novel are now available at new, reduced prices, and can be purchased in paperback, hardcover and Kindle eBook format.

Chris added: "The brand new Omnibus Edition of The Water Tower allows you to download the full story to your eBook reader for £6.99 – it is both the easiest and cheapest way of getting your hands on both volumes in one fell swoop. Paperback, hardcover and limited editions are still on sale for those who prefer a physical copy. Buying the new Omnibus Edition has one extra advantage though – it maximises the money that the CAFOD Humanitarian Appeal will receive.


"I'm enormously grateful to everyone who has bought, downloaded and enjoyed The Water Tower since its release last October. It was always destined to be a difficult story to tell, but the response from readers has been remarkable and humbling in equal measure, and has exceeded even my wildest expectations. I'm genuinely thrilled that people have enjoyed the exploits of Adam, Victoria, Hilda, Clarissa and Madison as they navigate rocky relationships, hidden secrets and unconventional love affairs, whilst trying to save Little Bassington's iconic Tower from demolition. Of course, the enthusiastic response from readers means, I suppose, that I'll have to dust off my pen and start working on Book 2..."

The Water Tower (Volumes I and II) is available to purchase exclusively from Amazon.



The new Omnibus Edition – combining Volumes I and II – exclusively for Kindle eBook readers can be purchased for £6.99 from Amazon.



Standard Editions (available in paperback, hardcover and Kindle eBook) are also available.



*Both volumes of The Water Tower contain language, situations and imagery which are adult in nature and may not be suitable for younger readers.



VEHICLE ADAPTATIONS

TOWING AND LEISURE

Cycle Carriers and Leisure Showroom
(Cyclehouse, Warrington, WA2 7NS)
Vehicle Adaptations and Towbar Showroom/Workshop
(BAS, Hollins Green, WA3 6LJ)

01925 640730

office@basnw.co.uk www.basnw.co.uk

"No big surprise" as controversial motorway service station approved on Green Belt

CONTROVERSIAL proposals for a new motorway service station on Green Belt land next to the M62 near Birchwood, Warrington, have been approved on appeal by a government planning inspector.

The decision comes as "no big surprise" to local Cllrs. who opposed the application which includes a 100-bed hotel, fuel filling station, electric charging station and facilities building put forward by Extra MSA, after Warrington Borough Council decided not to defend a planning committee decision to refuse the application.

The approval comes with a lengthy list of conditions including checking for Greater Crested Newts and badger sets in the area.

Councillor Wendy Maisey OBE, Culcheth Glazebury Croft who had previously described her feeling of 'utter dismay' at the Council's decision not to defend the appeal said: "Warrington Borough Councils DMC's decision in February this year was obviously a huge disappointment so the decision comes as no big surprise really. I spoke passionately at February's meeting and encouraged all the members to defend the appeal but to no avail.

"Bit by bit we are losing the battle to protect the greenbelt in our villages. This is really sad day for the ward I represent and comes on top of up to 500 houses being forced upon us on greenbelt in Culcheth and 80 in Croft. Never a truer word been more relevant than today about the greenbelt... 'Once it's gone it's gone'."

Cllr Maisey said in June 2021 when the development was initially turned down by the DMC that 'it was a victory for common sense.'

Meanwhile Croft Parish Cllr Norman Partington said: "Croft Parish Council has fought long and hard against this proposal, which it believes will be a significant imposition, only benefitting passing motorway travellers at the

expense of the local community. The targeted area is enjoyed by many of the local population for its beauty and for walks around Silver Lane Lakes and the close-by 'Risley Landfill Site'. This will all now be threatened by this major development, which includes a 100 bedroom hotel.

"Warrington Borough Council rejected the planning application put forward for this in June 2021. But after the appeal was lodged by the MSA Group, the Council decided that they would make no case against it when the appeal was heard in March. This was a huge disappointment.

"The appeal decision itself admits: 'As inappropriate development in the Green Belt, the proposal is by definition harmful, there would be significant harm to the openness, albeit it would be localised and limited harm to the purpose of safeguarding the countryside from encroachment.' In addition to this, we have the likely advent of the HS2 line coming through close by.

"Local people have a right to wonder why one distant government planning inspector with no democratic accountability can lay waste to our local environment when the democratic processes locally have rejected this despoilation.

The development proposed is for the erection of a Motorway Service Area including facilities building, up to 100 bedroom hotel, service yard, fuel filling station, electric charging station, parking facilities, landscaping and amenity areas and associated infrastructure and earthworks.

In his report, Inspector George Baird said: "On the positive side,

the MSA would provide investment and jobs and achieve social benefits. These economic and social, and environmental benefits, taken together, attract substantial weight.

The proposal would meet a longstanding identified need for a MSA within sections of the SRN, provide for the safety and welfare of motorists, there are no sequentially preferable Green Belt sites or non-Green Belt sites available, and NH supports the development. Case law establishes great or considerable weight should be accorded to this support and that cogent and compelling

are required to depart from that support. The provision of MSAs and the achievement of the objectives set out in Annex B of Circular 02/2013 relies on investment by the private sector.

"Here, there is nothing to suggest that appeal scheme would not be delivered and as such would meet the clear demonstrable need for an MSA on this part of the motorway network and as such attracts considerable weight. Accordingly, taking the case as a whole, the other considerations clearly outweigh the harm identified and very special circumstances exist which justify the development."



New post box welcomed

AFTER a lengthy campaign a new post box has arrived in Culcheth to benefit local residents.

Cllr Neil Johnson worked tirelessly these past 12 months for a post box at Chatburn Court, Culcheth in order to keep local residents safe from crossing Warrington Road.

Amongst those to benefit are local residents Judith Giles and Hazel Appleton who use the post box regularly and no longer have to wait for someone to take their letters.

Cllr Johnson was approached last year whilst canvassing and kept his promise and a post box has now been placed at an accessible point so local residents do not have to cross any roads.



Glazebury C.E. Primary School and Nursery

**Nursery Open Morning - Saturday 18th June 2022
from 10am to 12 noon**

Telephone 01925 763234 to make appointment.

**Are you looking for a Nursery place
for your child?**

**We have Nursery places available from
September 2022 for children aged 2+**

You are warmly welcomed to come and view our fabulous environment by arrangement and apply for places at our school based nursery provision led by an experienced and FULLY QUALIFIED TEACHER delivering high quality early years education.

**"This is a 'Good' school,
children make outstanding progress"**

We provide an environment that fosters a sense of belonging, children are at the heart of everything we do. Our highly trained teaching staff provide learning opportunities to enable every child to flourish and grow.

We provide:

- Nursery provision for 2, 3 and 4 year olds
- Flexible days - hours - mornings, afternoons or full days
- Wrap around care from 7.30am to 5.15pm
- 15 & 30 hours funded places for 3-4 year olds
- and 2 year old funded places
- We accept childcare vouchers
- Options to buy additional top up sessions as required

The HEART of our school and curriculum:

- H - Helping children prepare for life, growing with God.
- E - Embracing Christian Values.
- A - Achievement for all.
- R - Reading at the heart of our school.
- T - Teaching a knowledge rich curriculum.

Email: glazeburyprimary@ldst.org.uk
www.glazebury.eschools.co.uk

"Growing together at the heart of God's community"

Work continues apace on the historic Raven Inn at Glazbury security "beefed up" after attempt



WORK is continuing apace on the historic Raven Inn at Glazbury after local campaigners successfully bought their community pub - saving it from demolition.

Since the completion of the sale of the Raven, at the end of April, volunteers have been working very hard both inside and outside the premises, including "beefing up" security after an attempted burglary.

The building has now been made safe and secure and cleared of the considerable amount of rubbish that had been left behind.

Damaged stud walls and ceilings have also been removed. Plaster is being removed from the walls, to reveal the original brickwork.

Friends of the Raven Inn spokesperson Peter Sturman said: "The fact that the Raven has been left in poor condition allows us to strip it back to reveal the original features. We have the opportunity and responsibility to refurbish the Raven to a high standard.

"The work in the grounds of the Raven has literally transformed the outside. Plants, shrubs and fruit bushes, that have been hidden for years, are being revealed. The garden is being set free.

"With the very dedicated hard work from all our volunteers, we have

made incredible progress on each Saturday in May. Work continues inside and out."

Peter added: "In the not too distant future, the windows need to be replaced and the roof needs some attention.

"People passing the Raven will soon be able to see a discernible improvement. In June we will set about painting the exterior, including the timbers, which will be going 'back to black'.

"The hard-working gardening crew have been discussing options, whilst engaged in their backbreaking work. One idea is to transform an area into a sensory garden. Work will be starting on this, very soon.

"We have beefed up the security after disturbing two thieves, round the back of the building. The police are dealing with offences of attempted burglary, theft and criminal damage."

Meanwhile, anyone wishing to lend a hand can turn up about 10am on a Saturday morning. Other than the platinum jubilee weekend, the work will continue into June.

Friends of Raven Inn shown true community spirit

FRIENDS of the Raven Inn have praised the incredible generosity of supporters and true community spirit at the recent Culcheth Community Day.

Along with many others the Friends of the Raven Inn, had a stall at the well attended community

day, in Culcheth on Bank Holiday Monday.

Friends of the Raven Inn spokesperson Peter Sturman said: "I think everyone agrees the community day was a huge success. It was superbly organised and incredibly well attended.



For the second one in a row, albeit three years apart, we were fortunate to have a stall, amongst many others.

"Three years ago it was 'Help save the Raven' now we are 'Friends of the Raven'.

"With the Raven saved we will soon be turning our attention to bringing the lovely, historic building back to life as a community pub. We have tremendous support via Facebook, however we continually seek to engage with all the local community. The community day was the second opportunity to continue that process, after the coverage provided by Warrington Worldwide.

"Our stall was very busy throughout the day. A number of people offered their help. We handed out an information sheet,

to update on the current situation. Funds were raised via a successful raffle and the sale of the memoirs of local farmer, Eric Marshall. All of those proceeds going towards renovating the Raven.

"We also received an incredibly generous donation specifically to sponsor one of the next two skips we will require. Our previous two skips were sponsored by an equally incredible donation.

"It would be tremendous if the second of our next two skips were also to be sponsored.

"As well as a huge interest in the future of the Raven, we were delighted that every single person was so positive about the way forward.

"We will back up this successful day with a public meeting in the near future."

Charlotte Nichols MP Warrington North

If you live in Warrington North and have an issue you need help with or would like to book a surgery appointment, please get in touch.

0207 219 3000

CharlotteNicholsMP.com

charlotte.nichols.mp@parliament.uk

charlotte2153 CharlotteNicholsMP

Promoted by Charlotte Nichols at Orford Jubilee Neighbourhood Hub, Jubilee Way, Orford, Warrington, WA2 8HE.

Need IT Support at Home?

- Skilled and Friendly Technicians
- PC and Laptop Support
- Home Visit or Remote Dial-in
- Antivirus/Malware Check
- Unlimited Support Time
- Equipment Supplied: Laptops, PCs, Printers & Bespoke Builds



aspire
Computers Ltd

Call our Team: 01925 251143

sales@aspire-computers.com | www.aspire-computers.com

Historic Raven Inn as adapted burglary





Call us on: 01942 607250
www.elbfireplaces.co.uk
 70 Twist Lane, Leigh, Lancashire WN7 4DP

Fire Surrounds, Stoves, Gas & Electric Fires

**Established
40 YEARS**



No need to change your carpet - made to measure fireplaces

Over 75 displays over 2 floors

Live wood burning stove on display

Is your conservatory too cold to use in Winter?
Why not install a stove?



The Gardening Guide



“Lawns will need mowing regularly to keep them in good condition.”

Simon Bax,
Plant Area Specialist

- This is the month to get those gaps in your borders filled. Choose vibrant perennials and shrubs for instant impact, we have a huge choice.
- Watering is especially important during dry spells - also soak the ground before carrying out any new planting.
- Plants in containers and pots can be particularly greedy and will need feeding regularly with plant food to maintain blooms.
- Your first salad crops should be ready this month - including lettuce, radish and new potatoes.

Bents Garden & Home, Warrington Road, Glazebury, Cheshire WA3 5NT.
 01942 266300. Check online for seasonal opening times.

For the latest events and online shopping visit bents.co.uk



bents

bents

you'll be glad you went to Bents



This year we're also celebrating generations of service.



The Queen's Platinum Jubilee is the perfect time to celebrate Her Majesty's years of exceptional service and dedication to duty. And as it's also Bents' 85th Anniversary year, we're proud to be continuing the tradition of customer service which has defined everything we do.

Bents Garden & Home, Warrington Road, Glazebury, Cheshire WA3 5NT.
 01942 266300. Check online for seasonal opening times.

For the latest events and online shopping visit bents.co.uk



bents

Croft Parish Council gets a new chairman

AT the May AGM of Croft Parish Council, Councillor Paul Campbell took over the reins of Chairman from Councillor Keith Bland MBE.

Paul said: "I am honoured to follow in the footsteps of Keith. He has done a great job serving the people of Croft."

"He will be a hard act to follow

but I know I have his full support and that of my fellow Councillors. We will continue to do everything we can to ensure that Croft is a safe and happy place to live, for all its residents."



"Have-a-go" hero is new council chairman



HAVE-A-GO hero Neil Johnson is the new chairman of Culcheth and Glazebury Parish Council.

Cllr Johnson has been elected new council chairman after serving as vice chairman for a year. He represents Newchurch Ward.

Veteran councillor Keith Bland, who represents Culcheth Ward, and has served as council chairman on several occasions, is the new vice-chairman. He is also a member of Croft Parish Council and was formerly a borough councillor in Warrington.

Cllr Johnson, a former pupil at Culcheth High School, has a BA (Hons) degree in Social Welfare Law, Practice and Guidance.

He has been a member of the parish council for little more than

a year but has already made his mark.

Last year he organised voluntary litter picking sessions on Saturday mornings and in February was involved in a "have-a-go" citizen's arrest in Culcheth village when he tackled two would-be thieves and was dragged along the road behind a moped until he eventually forced it to stop and overpowered one of the alleged culprits with the help of other passersby.

At the time – less than a year after he had become a councillor – he said: "I didn't think about being brave or anything. It was just something I did."

"I certainly didn't think of it being part of the duties of a parish councillor."

Croft Parish Council News

New Parish Council Chairman

At the May AGM of Croft Parish Council, Councillor Paul Campbell took over the position of Chairman from the outgoing chairman Councillor Keith Bland MBE.

HS2

The Parish Council continues to oppose the building of the Golborne link as part of the HS2 railway construction. Councillors joined a new group called the Golborne Link Action Group which consists of Croft Parish Council, Culcheth and Glazebury Parish Council, Warrington Borough Council, CADRAG, other residents groups, and our local MPs.

Public Toilets

Work has started on the village's public toilets. It is hoped that the work will be completed soon.

Village Playground Equipment

The council has commissioned a contract for the cleaning and painting of the village playground equipment on Smithy Lane.

Speed Survey

The council has spoken with the Warrington Borough Council Highways Department to have a speed survey carried out to the centre of the village. The council will look at ways of bringing in speed calming measures if needed when this survey is complete.

Round Thorn

By the time you read this report, the work on Round Thorn will be complete. After a long running campaign by residents and councillors, we are glad to say that the work has now been completed and people can safely park up in their own street. Well done everyone.

Jubilee and Carnival

The Council would like to thank everyone who helped make the Jubilee Celebrations such a success. Don't forget the Croft Carnival is back on Saturday 2nd July.

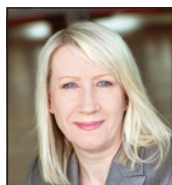
Residents may contact Croft Parish Council's Clerk on Email: croftparishcouncil@gmail.com
The Parish Council issues updates and information on Twitter: [@croftparish](https://twitter.com/croftparish)
Web: www.croftparishcheshire.org.uk



Paul Campbell
(Chairman)
07944 899059
cllrpaulcampbell@gmail.com



Philip Sharpe
(Vice Chairman)
07973 208384
cllrphilipsharpe@gmail.com



Valerie Allen MBE
01925 767274
val@valallen.co.uk



Keith Bland MBE
01925 766641
keithbland1@gmail.com



Norman Partington
01925 765144
normanpartington@gmail.com



Gary Farnsworth
garyianfarnsworth@gmail.com



CULCHETH & GLAZEBURY

P A R I S H C O U N C I L

Culcheth Library, Warrington Road, Culcheth, WA3 5SL

Phone: 01925 764 666

Parish Clerk: Tina Rogers-Smith - 07727 191 137

Email: culcheth.clerk@btinternet.com | Web: culchethandglazebury-pc.org.uk

YOUR PARISH COUNCILLORS

CULCHETH WARD



Valerie Allen
07890 046039
vallen@culchethandglazebury-pc.org.uk



Carol Benson
carolbenson@culchethandglazebury-pc.org.uk



Keith Bland
01925 766641
kbland@culchethandglazebury-pc.org.uk



Sue Bland
01925 766641
sbland@culchethandglazebury-pc.org.uk



Peter Holmes
pdholmes@culchethandglazebury-pc.org.uk

NEWCHURCH WARD



Ben Alldred
balldred@culchethandglazebury-pc.org.uk



Siobhan Carr
siobhancarr@culchethandglazebury-pc.org.uk



Neil Johnson
07977 825296
neiljohnson@culchethandglazebury-pc.org.uk

GLAZEBURY WARD



Janet Seddon
janetseddon@culchethandglazebury-pc.org.uk



Chris Smith
chrissmith@culchethandglazebury-pc.org.uk

PARISH NEWS

Some of the achievements of Culcheth and Glazebury Parish Council in the year May 2021 to 2022

- We supported the campaign for the introduction of weight restrictions on the A574 through Culcheth & Glazebury.
- Applied to trial average speed cameras on the A574 in Glazebury village.
- Successfully reintroduced live meetings of the Parish Council and sub committees in Culcheth and Glazebury.
- Successfully restarted the Community Day event in May.
- Community play area in Glazebury financially supported in its redevelopment.
- Responded to the HS2 Environment consultation with the support of Croft Parish Council and GLAG.
- Campaigned to stop the Motorway Service Area at J11 of the M62.
- Renewed the litter contract for Culcheth & Glazebury.
- Supported many residents and businesses with planning concerns.
- Lobbied planning authorities regarding the proposed developments along the M6 in Haydock and Parkside.
- Christmas lights installed to improve the winter street scene in Culcheth and Glazebury.
- Continued commitment to keep the Parish Council Office in the library.
- Individual councillors have supported 'Friends of Culcheth Library'.
- Individual councillors have supported 'Save the Raven' campaign.
- Individual councillors have supported local Youths completing Duke of Edinburgh's award through litter picking.
- Liaised with PCSO to ensure road speed checks are completed in Culcheth and Glazebury.
- Successfully completed the Annual Internal and External Audit of the Parish Council.

Next Parish Council Meeting Tuesday June 14th at 7:30pm in the Culcheth Centre

Publication of Information

The Parish Council has adopted a publication of information scheme. Details of who we are, what we do and how the public can access information is published on the main notice boards, Common Lane, Culcheth and Culcheth Library and on our website:

www.culchethandglazebury-pc.org.uk



Villagers celebrate share in £7.9m lottery windfall

MORE than 400 hundred neighbours from Lowton were celebrating over the Bank Holiday weekend after netting a combined £7.9 million with the People's Postcode Lottery.

The windfall came after the postcode sector WA3 1 was revealed as lucky players in Lowton scooped between £14,815 and £59,260.

Laura and Stephen Kings (65) were both left shocked after they each pocketed £14,815, only a few days after finding out that Laura is pregnant with twins.

Laura (35) said: "We only found out this week that it was a boy and a girl, and the day after we got that news, we received two letters saying we'd both won and could come and pick up our cheques. So, we're having a good week."

"We've already got two children and now I've got twins on the way. It's going to be amazing – this is for them."

Among the winners was a married couple, Susan (64) and John Bachegalup (67) and their son, Chris Bachegalup (36) who celebrated combined winnings of over £120k.

The trio were in disbelief after John won £14,815, Susan bagged £44,445 and Chris took home £59,260 due to playing with four tickets.

Susan hadn't told her husband and son that she played the lottery until they received an invite in the post earlier in the week.

Susan said: "John and Chris didn't know I played, and now we've all

won. It's been a day of shocks."

The family already have holiday plans in place to celebrate each of their five-figure wins. Susan said: "We're going to Florida! All of us are going – it's going to be incredible."

Community carer Jan Oakes (70) and her daughter Suzanne McLaughlin (48) also won together winning over £14k each.

In recent years, Jan has spent months in hospital fighting for her life in the Intensive Care Unit at Warrington Hospital. She credited the specialist doctors and nurses for saving her life and has vowed to donate a portion of her prize money to the ward.

Jan said: "The staff were fabulous, I feel as though I owe a lot to them. The doctors put me in a coma and when I came around they helped me to learn to walk and talk again. My family were told I might only have a few hours left to live and to be stood here today with my daughter is incredible."

Patricia Peverall (76) landed close to £30k playing with two tickets and was over the moon for the local community. She said: "I'm really, really glad for everyone and I love the fact that Lowton has won for a change. It's quite a poor area and we've deserved some luck."

Father and daughter Brogan and



Bryn Griffiths won together picking up cheques for £14,815.

Brogan, who works as a practice nurse, is pregnant with her first child and said: "I wasn't expecting that amount – it's amazing. I'm also expecting this year and this money will go towards getting the house ready for the baby coming."

Another winner said: "This has been the best day ever. It's just one of the wildest things that can happen to a small town."

The £7.9 million prize was shared between 420 players. The full winning postcode was WA3 1BH. Winning tickets in the full postcode received £371,932 each.

People's Postcode Lottery ambassador Judie McCourt said: "What an amazing way to start the bank holiday weekend for everyone picking up a cheque today! Neighbours winning together is what Postcode Lottery is all about, so it's

been really special to bring our lucky Lowton winners together and surprise them with lots of lovely cheques."

People's Postcode Lottery was created to raise funds for charities in Britain and beyond. Players of the lottery have now raised more than £900 million for thousands of good causes.

April's Postcode Millions draw was held on behalf of Postcode Children Trust, which funds charities dedicated to inspiring and supporting children and young people. Funded organisations include NSPCC, Whizz-Kidz, Magic Breakfast and Young Lives vs Cancer.

Local good causes have also benefitted from player support. Creating Adventures in Warrington received a grant of £11,434 to enrich the lives of adults with autism and learning disabilities through the provision of activities in the community.

Disability Awareness Day

SUNDAY 17TH JULY 2022

Walton Gardens, Warrington

10am - 4:30pm



- Support Groups & Services
- Equipment Suppliers, Holidays & Transport
- Sports Zone, Arts Marquee, Live Bands, Dance & Drama

Organised by

Principal Sponsors



@WDPcomms

Disability Awareness Day



Tel: 01925 240064 www.disabilityawarenessday.org.uk

Promoting Independence Through Life and Work



WI says farewell to long-standing member

THE monthly meeting of Croft WI began with a minute's silence to remember long standing member Kathleen Daniels who sadly passed away last month.

Lesley Lloyd gave an excellent presentation on the proposed 2022 WI Resolution "Women and Girls with ASD and ADHD – Under Identified, Under Diagnosed and Under Supported", citing arguments both for and against the resolution.

The WI campaigns for equality in medical diagnosis and there is a need to raise awareness of Autism Spectrum Disorder and Attention Deficit Hyperactivity Disorder in girls as they can present with different symptoms to boys. Girls tend to be better at masking these disorders than boys, suffering in silence, but this can lead to severe mental health problems.

After an interesting discussion

the majority of members voted in favour of the resolution. If it is approved at national level the NFWI will campaign to improve funding, research and diagnosis of these disorders in girls and adult women.

Following refreshments members enjoyed a social evening playing a variety of board games in small groups.

The competition 'A Jubilee Doodle Picture' was won by Janet Hughes, 2nd Louise Geekie and 3rd Lesley Lloyd.

Croft WI meets at 7.30pm at Croft Memorial Hall on the third Wednesday of each month and visitors are welcome.

Culcheth's first "jigathon"

CULCHETH Jigsaw Club is holding its first-ever "Jigathon" on Friday, June 24 from 12 noon to 4pm - to raise money for the Culcheth Village Library renovation project.

A team of keen puzzlers, working in relay, is aiming to complete four jigsaws in just four hours.

There will be an opportunity to sponsor the team and also a range of fun activities for everyone who attends, including a "jigbola" - a tombola with a twist - a jigsaw guessing challenge, a puzzle hunt for children, jigsaws for sale and refreshments, include home-made cakes.

CLASSIFIED

CARPET CLEANING

A1 STAINBUSTERS. A Warrington company cleaning carpets, hard floors, Upholstery (Leather + fabric) and curtains in situ. FREE quotes for domestic and commercial. Approved carpet cleaners for Hancock and Woods for over 10 years. Call John on 07765 314080 (08/22)

SIMPLY THE BEST CARPET CLEAN YOU will ever have. Cleaners UK Ltd. Est over 35yrs. Have your carpets & sofas beautifully deep cleaned leaving them fresh smelling & colour restored. Latest & best methods. Dry/steam. Leather cleaning, oriental rug specialist. Professional, reliable & affordable. For more info call Neil Riley on 01925 264989/07831 336060 www.cleaners-uk.net (04/23)

CLEANING SERVICES

arleys angels

- Spring Clean Specialists
- Presenting your home for sale
- Moving house
- After building work cleans

01925 266834
... because you're worth it! (07/21)

ELECTRICAL CONTRACTORS

TRUST PROPERTY ELECTRICAL SERVICES. NICEIC Part P Approved Contractor. All Electrical work undertaken. Inspection and testing and PAT testing. All work certified and guaranteed. Call Tim on 07754409906 or 01925 601055 (06/22)

MORTGAGES

TALKING MORTGAGES - INDEPENDENT MORTGAGE ADVICE.

For local, impartial and professional advice on all aspects of mortgages contact Darren Simpson on 07708 975122 (06/22)

PAYROLL

WHY TRY TO BE A PAYE EXPERT? Watkinson Black can provide a cost effective payroll service, releasing you to concentrate on your business. For further details please phone: 01925 413210 or e-mail: info@warringtonaccountants.co.uk (07/21)

TYRES

CULCHETH TYRES

New and Part Worn Tyres
Motorcycle Tyres and Servicing
01925 766 380
www.culcheth tyres.co.uk
Unit 1D, Taylor Business Park, Risley, WA3 6BL (08/22)

EVERGREEN Centre of Excellence

Express Mobile Tyres

Local Family Business. Est. 1997
01925 810000
www.expresstyres.co.uk
Order Online Today!

Branded & Budget Tyres
Cars, Vans, 4x4's, Caravans
Light Commercial
& Performance Vehicles

The tyre service that comes to you at home or your place of work

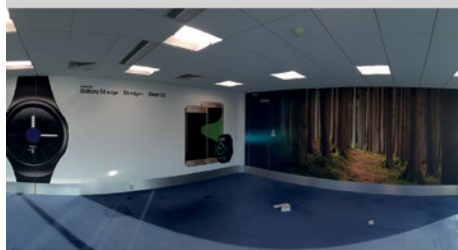
No Call Out Charge!

BRIDGESTONE MICHELIN
GOODYEAR Continental (07/21)

twentyfour seven
design & print ltd

We supply and fit all types of signage: self adhesive graphics, glass, metal, wood, perspex, foamex plastic.

Call or email for a free site visit.



01925240247 info@247print.net www.247print.net

Promote your business to thousands of local people with a

Culcheth Life
Magazine

classified for just £72 plus VAT for six months.

For more details call 01925 631592

Make 2022 the year about YOU... Apply NOW for September!



Higher Education at Warrington & Vale Royal College

Stay local and benefit from the expert teaching and outstanding facilities at Warrington & Vale Royal College.

We offer a range of HNCs, HNDs and professional qualifications, designed to help you progress onto your chosen career path. Whether you dream of becoming a nurse, a graphic designer or a teacher, we can help you achieve your goals.

Full-time fees just £5,995 per year

Significantly lower than university fees!



Access to Higher Education



**Health
& Social Care
Academy**

Have you always dreamt of being a nurse, a midwife or a social worker, but don't have the qualifications to get into university?

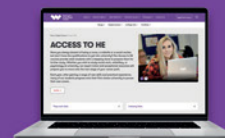
Our brand-new Health & Social Care Academy boasts industry standard facilities including a mock hospital ward, dementia training resources and an independent living flat. This regional centre of excellence is the perfect place to kick-start your career in the health & social care sector; a dream that recently became reality for our Access to HE Midwifery class.



Every single student has been offered a place to study a related course at university starting in September, from the University of Chester to Edge Hill University. The whole class commented on the exceptional support they've received from their expert tutors, coupled with the access to outstanding facilities, which has fully prepared them to progress on to university. We are so proud of this cohort and can't wait to see how far they go!

Could this be you?

Each year, after gaining a range of new skills and practical experience, many of our students progress onto their first-choice university to pursue their new career. For more information and to make an application, visit: wvr.ac.uk/access.



Don't be disappointed, apply NOW for September 2022!



**Warrington
& Vale Royal
College**

wvr.ac.uk
01925 494 400