

Culcheth *Life*

Magazine

ISSUE 224 | APRIL 2022
FREE EVERY MONTH

CULCHETH • CROFT • GLAZEBURY • BIRCHWOOD AND SURROUNDING AREAS



urban

BUILDING PROJECTS LTD

**Extension &
Building Renovation
Specialists**

Tel: 01925 730888

www.urbanbuildingprojects.co.uk



**Hop into Bents
this Spring!**

Page 2

All the latest news: www.culchethlife.com

Editor

Gary Skentelbery

Production

James Bryan

AdvertisingJames Balme
01925 631592 opt 1**Editorial**

01925 631592 opt 2

Email

info@culchethlife.com

Websiteswww.culchethlife.com
www.frodshamlife.co.uk
www.lymmlife.co.uk
www.warrington-
worldwide.co.uk
www.warrington.tv**Address**New Media Centre
Old Road Warrington
WA4 1AT*Culcheth Life is published
monthly by Orbit News Ltd.**The contents of this magazine
are fully protected by copyright
and nothing may be reprinted
or reproduced without prior
permission of the publishers.**The publishers are not liable for
any statement made or opinion
expressed by third parties in this
publication.**Printed by TwentyFourSeven*

Editor's Comment



IT'S fantastic to see things starting to get back to normal with the return of popular events like Culcheth Community Day after an absence of two years due to the pandemic.

But with COVID-19 rates still high in the Warrington area, there is no room for complacency, with the virus still making some people seriously ill, with some still dying.

At time of press rates remained high particularly in the Culcheth area and with free testing ending, we will have little idea on how many people are infected moving forward.

But after two years we now have to learn to live with the disease and use our common sense to help protect those who are vulnerable, while at the same time living our lives.

With the added pressures of the ongoing war in the Ukraine and the rising cost of living, the road ahead remains tough - but a bit of Spring

sunshine certainly helps improve the mood!

Meanwhile there has been some good news for the Wild Wings Bird of Prey centre based at Taylor Business Park.

After fearing they would have to reapply for full planning permission to remain on the site, they have now been told they only require a Non-material amendment and then a Variation of Condition, which will only cost hundreds, not thousands of pounds.

So, fingers crossed their future has now been secured until December 2025 after an appeal fund exceeded expectations and by which time, hopefully the threat of the HS2 Golborne Link will be a distant memory - we live in hope!

Hop into Bents this Spring!

THE Bents Bunny Hop is back and plans are bouncing along nicely, with hopes for blue skies and sunshine on Saturday 23rd April at 2pm when the fun and games will begin.

Bents would like to encourage as many people as possible to get involved with the family-friendly 5K charity challenge, designed to kick start fundraising for the Centre's 2022 Charity of the Year.

People of all ages are encouraged to sign up, dress up, shake their bunny tails and take part in the event, whether walking, running or hopping!

Entry is £2.50 for children, £5 for adults or £10 for a family of four. To register in advance email beinspired@bents.co.uk or enter on the day with all proceeds split between this year's charity of the

year and the 2021 charity of the year, Solving Kids Cancer.

The Bents Big Bunny Hop is just one of the many family events planned at Bents this April.



CAMPBELL CROSSLEY & DAVIS
Licensed Insolvency Practitioners

Constructive solutions to debt
for companies and individuals.



Ian Williamson
M: 07703 529212
Roger White
M: 07946 820299

www.campbell-crossley-davis.co.uk



Making it easier for your business to be successful

We care about you

You're a hard working entrepreneur and you need an accountant who does more than just tick the boxes.

You need a professional

Every one of our highly competent, skilful and professional people is here to help you.

You're our number one priority

You're more than just someone we prepare accounts for, the success of your business means everything to us.

Are you looking to make your business life easier?
Speak to one of our experts:

01925 761 600

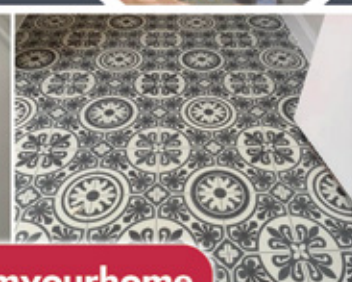
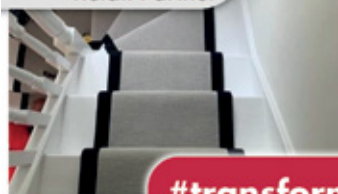
or visit us at: **stylesandco.co.uk**

styles and co
chartered accountants

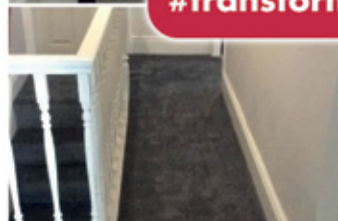
the
flooring
co.

Opening Times:

Monday to Friday 9:30am - 4:30pm
Saturday 10am - 3:30pm



#transformyourhome



Carpets | Vinyls | Karndean | Laminates | Screeding

Call in store to find your perfect flooring solution.
Free Quotes & Measures

The Old Telephone Exchange, Common Lane, Culcheth, WA3 4HA
01925 555 820 | sales@flooringcocolcheth.co.uk
www.flooringcocolcheth.co.uk

Peaceful pickets continue campaign to save historic Raven Inn

A peaceful picket line was set up outside the historic Raven Inn at Glazebury, in the ongoing battle to save the premises from demolition and be retained for community use.

With the premises due to go under the auctioneer's hammer on March 31st, campaigners who are keen to purchase the premises, wanted any prospective purchasers to know the strength of local feeling that it should become a public house once again.

Help Save the Raven spokesperson, Peter Sturman said: "We are aware the Raven is being

marketed by a London-based agent.

"A London-based agent may attract people, from outside the area, who are not aware of the history and heritage of the Raven.

"In all fairness to any prospective developer, we feel we must make them aware of the many issues they would have to try to overcome. Add to that, the regard in which

the Raven is held, together with the sheer weight of local public opinion that the Raven must be saved and preserved.

"This is an entirely peaceful, passive gathering designed to make people aware.

"We are keeping the numbers down, so as not to intimidate.

"It is our hope that no viewers turn up. If any do they will be aware of our community's love for the Raven."

Campaigners believe they are at

a pivotal moment for the future of the historic building.

Meanwhile travellers have finally vacated the former pub car park - leaving piles of rubbish which local residents fear will attract rats and other vermin.

The encampment of four caravans left just days before bailiffs were due to remove them from the privately owned land where they have been since January 20, with a brief departure on February 9.



HUNTER HEALEY

CHARTERED ACCOUNTANTS

- Professional, approachable, affordable
- Accounts preparation & tax returns for individuals & companies
- Bookkeeping, payroll & vat
- Capital Gains, Estate Planning & Probate Work
- Business start up advice
- First meeting free of charge

Call Nigel Healey now on 01925 767222

Abacus House, 450 Warrington Road, Culcheth WA3 5QX

www.hunterhealey.co.uk



E SMITH AND SON PLANT CENTRE

WWW.LYMMPLANTS.CO.UK

Over 60 years in Lymm and still growing!

THE NURSERY, BOOTHS LANE, LYMM, WA13 0PF
01925 752459

SPRING FLOWERING PERENNIALS

SEASONAL PLANTED CONTAINERS AND BASKETS

VEGETABLE PLANTS, FRUIT TREES AND BUSHES

COMPOST, GROWBAGS AND SUNDRIES

Gift Vouchers Available

OPEN 7 DAYS: MONDAY TO SATURDAY 10AM - 4PM | SUNDAY 11AM - 3PM

From small beginnings to four million plants a year!

LYMM based family business E Smith and Son has grown from small beginnings to four million plants a year, specialising in perennials, seasonal bedding and basket plants and Christmas holly wreaths.

Started by Edwin in 1959 in Statham, they moved to their present site on Booths Lane in 1961 where they grew bedding plants and beautiful cut flowers, and where they continue to grow.

From small beginnings, the family now produce around four million plants annually, from seeds and cuttings.

Over 90% of the seedlings are sown on the nursery, using the latest technology and newest varieties to produce healthy plants for sale to retail, wholesale, landscapers and local authorities. Irrigation is mechanised using collected rainwater through watering booms to minimise waste and as much as possible they use recycled and recyclable plastics in their pots and trays.

Sadly, Edwin and Barbara are no longer with us, but Derek and Sarah continue the work they started, helped by David and Rachel when needed. Business has changed over the years, and they no longer grow cut flowers: they specialise in growing quality bedding plants and making beautiful hanging baskets, bespoke to your own requirements, or straight off the shelf, in summer and winter. Alongside the horticultural produce

they offer a comprehensive range of pots, composts, and fertilisers for those who want to grow their own,

and plenty of advice!

The Christmas wreath production continues with greater emphasis on wreaths for doors and decorations, but still traditionally made using local holly and greenery. The wreath workshops

proved to be very popular last year and will be repeated this year.

Keep up to date with latest news and stock by visiting the Facebook page Esmith and son plant centre or visit www.lymmplants.co.uk



Only £895 for a fully fitted electric door.
Gotta get a Garolla.

Offer valid for openings up to 2.6m wide & inc: 2 remote controls, 55mm white slats, internal manual override.

NOW ONLY £895 WAS £1394 INC VAT

WHAT'S INCLUDED:
FREE MEASURING & FITTING
TWO REMOTE CONTROLS
ACOUSTIC & THERMAL INSULATION
AVAILABLE IN 21 COLOURS
DISPOSAL OF YOUR OLD DOOR

GAROLLA
ROLLER SHUTTER DOORS

GOTTA GET A GAROLLA

CALL US TODAY
01925 205 004
MOBILE
07537 149 128
www.garolla.co.uk

Garolla garage doors are strong and solidly built. They're made to measure in our own UK factories. The electric Garolla door rolls up vertically taking up only 8 inches inside your garage. Our expert installers will fit your new door and take away the old one so there's no mess.

Give us a call today and we'll come and measure up completely Free.

Forty new jobs as factory wins planning approval



FORTY new jobs will be created following the granting of planning consent for a new industrial building at Birchwood Park, Warrington.

The development will allow existing company Warrington Fire to move across town from Howley and expand.

They already employ 140 people and plan to take on 40 more, Warrington Borough Council's development management committee was told.

Outline planning consent for the new building was originally approved in 2015 and detailed proposals have now been completed.

Warrington Fire carry out testing,

inspection and certification of materials, products and processes for a wide range of customers to ensure compliance with fire safety regulations and general fitness for purpose.

The committee was told the development would be abutted on two sides by Daten Avenue and Kelvin Street. The nearest houses were about 340 metre away on Warrington Road, Risley while there were others about 360 metres away in Brunskill Close.

There were no objections to the development and officers said it was an acceptable development in line with the 2015 outline planning consent.

Darron puts in the miles for life-saving defibrillator

DARRON Bibby from Culcheth is once again putting in the miles, this time to raise funds to purchase a life-saving defibrillator to be sited in the centre of Culcheth Village.

He is aiming to run at least 1,000 miles throughout the year, averaging 20 to 25 miles per week and will also do a run on Christmas Day and Boxing Day.

His last run for this fundraiser will be on New Year's Eve. He has already completed 160 miles.

Darron said: "I hope to raise a minimum of £2,210. This will cover the cost of a life saving defibrillator, community display case and provide certified defibrillator training for up to 12 people that will be offered to local businesses situated in the centre of Culcheth Village."

"The village centre is extremely busy all year round so having access to a defibrillator is vital."

"Any funds raised over £2,210 will be donated to The Oliver King Foundation – a brilliant Liverpool based charity set up by Oliver's parents Joanne and Mark King in memory of their 12-year-old son, Oliver, who suffered a cardiac

arrest while at a swimming lesson at school. Without access to a defibrillator in or near the school, his chances of survival dropped significantly with every minute that went by."

The Oliver King Foundation has saved 60-plus lives in schools and sporting venues, placed more than 5,900 defibrillators across the UK and trained over 135,000 people.

Cllr Wendy Maisey said: "We are delighted with Darron's offer to fund a defibrillator through his sponsored run. We know defibrillators save lives and to have one situated around the village green would be so welcome."

"Please get behind Darron and support his campaign which will hugely benefit our community."

If anyone would like to kindly sponsor Darron, they can donate on his Just Giving page as follows: www.justgiving.com/crowdfunding/darron-bibby



Devastating climate impact of using peat in your garden

NEW analysis by the Wildlife Trusts has revealed the devastating climate impact of using peat in horticulture – and nowhere more so than in the Warrington area.

The Wildlife Trusts are calling on everyone to support an immediate ban on the damaging practice.

According to Trusts, the 18 hectare Holcroft Moss, just six miles north east of Warrington, is the only known area of lowland bog in the county that hasn't been cut for peat – and even that has been damaged by commercial peat extraction nearby.

Risley Moss is one of the last remaining fragments of the raised bog system that once covered large areas of South Lancashire and North Cheshire.

Cadishead and Little Woolden Mosses, all that remain of Chat Moss, are being restored by the Lancashire Wildlife Trust, but even after 10-year's work, still have a long way to go before the scars of historic peat extraction are removed.

According to the Wildlife Trusts, policy failure to stop peat extraction has caused up to 31 million tonnes of CO2 to be released since 1990.

Peat extraction for horticulture in 2020 alone could release up to 880,000 tonnes of CO2 – equivalent to driving to the Moon and back 4,600 times.

The analysis estimates that as much as 31 million tonnes of CO2 could have been released into the atmosphere since 1990, as a direct result of using peat in gardening, and its use by professional growers of fruit, vegetables, and plants.

Little Woolden Moss was still being subject to peat extraction for horticulture as recently as 2017. In some areas barely 50cm of the once almost 8m of peat was left, and the site had been totally

stripped of all plant and animal life. The Wildlife Trust is working hard to breathe life back into this precious peatland, healing the scars that peat extraction left.

The campaign to stop peat extraction took off in the 1990s but only now are the UK and Welsh Governments conducting a public consultation on ending the use of peat in the retail sector by 2024. The Wildlife Trusts believe we cannot wait this long.

Despite 30 years of campaigning against extraction and increased public outcry, peat continues to be sold in vast quantities for amateur and professional horticultural use, with huge consequences for nature and climate.

If peat is left undisturbed – in bogs, not bags – it can store thousands of tonnes of carbon for millennia to come. However, once peatland habitats are disturbed for extraction, stored carbon becomes carbon dioxide (CO2) and is lost to the atmosphere forever, contributing directly to climate change.

Ailis Watt, peat officer at The Wildlife Trusts, said "These losses are gigantic, irrecoverable and unjustifiable. Peat and the carbon stored within it simply cannot be replenished within human lifetimes. Each time governments dither over whether to ban peat use in horticulture, we risk losing more of this habitat that has taken millennia to develop, as well as losing its huge capacity for carbon storage."

"Extracting peat is bad for our climate and for wildlife. Peatlands provide habitat for a rich diversity of plants and animals. Migrating birds feed on peatland insects, while snakes and lizards also thrive in these special places. The UK is already one of the most nature-depleted countries in the world and extracting peat destroys complex

ecosystems that are vital for nature's recovery. It has to stop."

"Investing in peatland restoration whilst allowing extraction to continue is illogical and an inefficient use of public funds."

The Wildlife Trusts are calling for an immediate ban on the sale and extraction of peat for horticulture,

and a ban on importing peat from abroad.

They are urging the public to respond to the Government consultation before it closes on March 18.

You can join the campaign here <https://action.wildlifetrusts.org/page/98699/action/1>



WI president missed meeting due to Covid

VICE-president Doreen Procter welcomed members to the March meeting of Culcheth and Newchurch WI as president Eileen Griffiths was isolating due to Covid.

Kath Hanley and Marjorie Pugh were tea hostesses and it was decided that the table flowers should be presented to Ruth Briggs, one of the March "Birthday Girls" who would be 90 shortly.

Speaker John Hooley gave a presentation with slides "Old and New Macclesfield - a Taste of Treacle Town."

He went on to judge the A Piece of Silk. This topic was a tribute to Macclesfield's weaving past. John chose Sylvia Brown as winner, followed by Margaret Harrop and Gill Berry.

Members were told that on Saturday April 30 there will be an Advanced Motoring Assessment from 10 am till 4 pm at Croft Memorial Hall, organised through Croft WI. Lesley Lloyd announced the event and will make a list of names of those wishing to take part.

Looking ahead to June 5 it is hoped members will support the Platinum Jubilee Picnic on the Green. Bring your own sandwiches and your own chair to this once in a lifetime event!

The next meeting will be on April 19. The speaker will be Mrs Dominga Devitt, who will talk about the "Wirral Brooch". The April competition will be An Unusual Brooch

Campaign group aims to carry on fighting HS2

COUNCILLORS and campaigners in the Culcheth area have formed a joint group to carry on fighting the HS2 high speed railway.

Borough councillors and parish councillors from Culcheth and Glazebury and from Croft have joined with CADRAG – the Culcheth and District Rail Action Group.

They want to link up with other councillors and campaign groups along the line of the proposed Golborne Link – the section of the HS2 that would slice through the

Culcheth and Croft area.

Frank Allen, chairman of CADRAG, said: "The HS2 Hybrid Bill for the section north of Crewe was published recently and we were very disappointed to see it still included the Golborne Link as set out in 2020.

"We have formed a joint group to campaign against the Golborne

Link and seek its removal from the Bill as early as possible. If necessary we will formally petition the House of Commons, asking them to remove the Golborne Link.

"We are keen to join up with other local councillors and community groups along the Golborne Link to present a combined front. We are also seeking support from our local MPs, who we believe are opposed to the Golborne Link.

"The Golborne Link will be hugely expensive. It will be very damaging to local communities, to jobs and the economy and to the environment. It will deliver very few benefits and is very poor value for money.

"There is a good alternative to

the Golborne Link. The existing West Coast Main Line north of Crewe can be upgraded as an alternative and this will deliver much greater benefits. It will cost no more and could well cost less and cause less disruption to local communities.

"We encourage local residents to contact their local MP and express their concern about the Golborne Link. This will help us to press for it to be removed from the Bill as soon as it is presented to the Commons.

For Warrington North, which includes Culcheth, Croft and Glazebury, your MP is Charlotte Nichols, email charlotte.nichols.mp@parliament.uk

Charlotte Nichols MP Warrington North

If you live in Warrington North and have an issue you need help with or would like to book a surgery appointment, please get in touch.

0207 219 3000

[CharlotteNicholsMP.com](https://www.CharlotteNicholsMP.com)

charlotte.nichols.mp@parliament.uk

charlotte2153 CharlotteNicholsMP

Promoted by Charlotte Nichols at Orford Jubilee Neighbourhood Hub, Jubilee Way, Orford, Warrington, WA2 8HE.



Coffee morning boost for library renovation fund

A CAKE and coffee morning raised more than £950 for the Culcheth Village Library Renovation fund.

More than 100 people attended the event at Culcheth Village Club and organised by Sue Chinn, owner and fitness "guru" of Culcheth Village Fitness Club.

Janet Evans, co-vice chair of the Friends of Culcheth Library, said: "It was while sharing information about fundraising for the library renovation that Sue offered to do a coffee and cake morning with her fitness club members. "She galvanised the people in her classes to attend and must be thanked unreservedly for her help and support.

"We were overwhelmed with the amount of support we received – the number of cakes we received, the generosity of people buying cakes and raffle tickets, the donation of prizes and everyone who volunteered to make tea, serve and sell and then clear up – it was just amazing for a village coffee morning lasting just two hours.

"I think we should be under no illusion as to the strength of positive feeling for our library renovation project. I personally am very proud.

"An overall thank you to everyone – and also to Wayne and Warren Bibby at the Village Club who gave us the use of the room, the facilities and the equipment."



15% OFF
any bike rack
with towbar
purchase

10% OFF
any bike rack
with bike
purchase

TOWBARS SUPPLIED AND FITTED

Fitted at your home or our workshop

**40
YEARS
EXPERIENCE**

BIKE RACKS AND LEISURE

BAS Workshop (Hollins Green, Warrington)
BAS Showroom (Cyclehouse, Warrington)
01925 640730 / 0161 776 1594
office@basnw.co.uk www.basnw.co.uk

Munitions factory upgrade given the go-ahead



PLANS to upgrade and modernise facilities at the Orica munitions factory at Glazebury have been given the go-ahead by Warrington planners – almost a year after they were first submitted.

The site, in Wilton Lane, has been an explosives depot since the early part of the 20th century and Orica is believed to be the world's largest manufacturer of commercial explosives.

Occupying some 63 hectares, the site is in the Green Belt and is surrounded by farmland. Much of it is grassland and grazed by sheep. Carr Brook transacts the site.

It is Orica's main facility in the UK, although it has another in Scotland.

Because of the nature of the facility, it is essential it is in an isolated position, well away from other property, which was why the facility was located in its present

position originally.

The new development will involve the demolition of an existing storage building, at the rear of the company's administration block and the construction of a new manual mixing building within a secure compound.

Explosives have been stored at the site for many years without incident and the new facility will make it even safer, according to the company.

Although the development would normally be regarded as inappropriate in the Green Belt, there are very special circumstances that override the harm to the openness of the Green Belt.

The Gardening Guide



“Spring fertiliser can be applied to your lawn, but remember to water it in if there's no rain.”

Simon Bax,
Plant Area Specialist

- Spring vegetables such as peas, beans and lettuce seeds can be sown now.
- Try spring cleaning your houseplants; remove spent flowers, dead leaves and rinse the dust from the leaves with a sprayer as clean leaves allow the plant to breathe!
- Plant up hanging baskets with fuchsias and other basket plants and then hang them up in your greenhouse to establish.
- Many of the birds (that you put up nest boxes for!) will have young now and need help with food.

Bents Garden & Home, Warrington Road, Glazebury, Cheshire WA3 5NT.
01942 266300. Check online for seasonal opening times.

For the latest events and online shopping visit bents.co.uk



bents

Need IT Support at Home?

- Skilled and Friendly Technicians
- PC and Laptop Support
- Home Visit or Remote Dial-in
- Antivirus/Malware Check
- Unlimited Support Time
- Equipment Supplied: Laptops, PCs, Printers & Bespoke Builds



aspire
Computers Ltd

Call our Team: 01925 251143

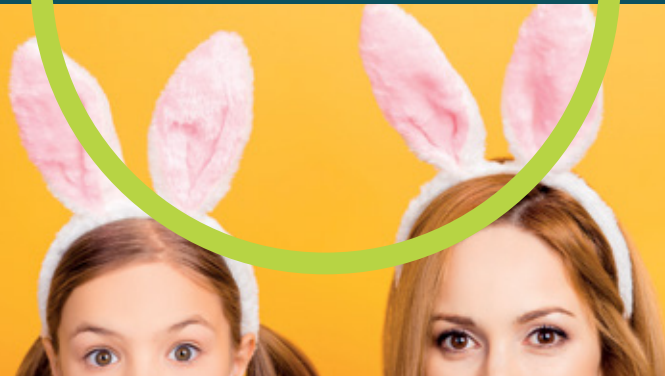
sales@aspire-computers.com | www.aspire-computers.com

bents

you'll be glad you went to Bents

Egg-cellent events to make your Easter special

Easter fun at Bents is back!
Find out more at bents.co.uk



Bents Garden & Home, Warrington Road, Glazebury, Cheshire WA3 5NT.
01942 266300. Check online for seasonal opening times.

For the latest events and online shopping visit bents.co.uk



bents



Call us on: 01942 607250
www.elbfireplaces.co.uk
70 Twist Lane, Leigh, Lancashire WN7 4DP

Fire Surrounds, Stoves, Gas & Electric Fires



Established 40 YEARS

No need to change your carpet - made to measure fireplaces

Over 75 displays over 2 floors

Live wood burning stove on display

Is your conservatory too cold to use in Winter?
Why not install a stove?



Culcheth Community Day will be back on the village green

CULCHETH Community Day – cancelled for the last two years because of COVID – will be back on Monday, May 2nd.

A full programme of events and attractions has been lined up and Culcheth and Glazebury Parish Council is hoping the event will give a much needed boost to charities hit hard by the pandemic.

The event will be on the Village Green, off Common Lane, from 12 noon to 4.30pm.

Official opening will be at 12 noon, after which there will be a performance by the Batido Rio Samba Band.

At 12.30 there will be a performance by Children's Entertainer Ian "Zippy" Lees, to be followed at 12.40 by the Extreme Mountain Bike Show.

At 1pm there will be a performance by Batido Samba Band, followed at 1.15pm by Ian "Zippy" Lees.

There will be a second chance to see the Extreme Mountain Bike Show at 1.15 and at 2pm there will be an hour-long pet show.

The Mountain Bike Show will be back for a third time at 3pm and the day will end with thanks, competition results and presentations.

Throughout the day there will be a classic car, motorbike and tractor show going on, as well as stalls galore in aid of charity.



Residents surveyed about anti-social behaviour hot spots

BOROUGH Councillors along with Cheshire Police undertook a second house-to-house survey in six months around the Shaw Street area of Culcheth to survey residents concerned about anti-social behaviour hot spots in the area.

The car park on Shaw Street has been a centre of anti-social behaviour and local Warrington Borough Councillors in conjunction with Cheshire police are looking into measures to cut down on bad behaviour.

Cllr. Wendy Maisey said: "All residents deserve the right to live without fear of anti-social behaviour. We are looking into the feasibility of number of schemes to assist us cracking ASB which could include CCTV, ANPR cameras and bollards but there are no firm decisions yet."

"Several multi-agency on-line meetings have taken place and we want to make the car park less attractive to those who come and disturb local residents."

Cllr Carol Benson added: "It's always good to receive a warm welcome on the doorsteps when surveying with Cheshire Police."

"We thank the Police for their time and support with this survey and to all the residents who helped us too. Residents are appreciative of the fact we're trying to mitigate these problems and we are trying hard to tackle the issues for residents in the not too distant future by working multi-agency".





CULCHETH & GLAZEBURY

P A R I S H C O U N C I L

Culcheth Library, Warrington Road, Culcheth, WA3 5SL

Phone: 01925 764 666

Parish Clerk: Tina Rogers-Smith - 07727 191 137

Email: culcheth.clerk@btinternet.com | Web: culchethandglazebury-pc.org.uk

YOUR PARISH COUNCILLORS

CULCHETH WARD



Valerie Allen
07890 046039
vallen@culchethandglazebury-pc.org.uk



Carol Benson
carolbenson@culchethandglazebury-pc.org.uk



Keith Bland
01925 766641
kbland@culchethandglazebury-pc.org.uk



Sue Bland
01925 766641
sbland@culchethandglazebury-pc.org.uk



Peter Holmes
paholmes@culchethandglazebury-pc.org.uk

NEWCHURCH WARD



Ben Alldred
balldred@culchethandglazebury-pc.org.uk



Siobhan Carr
siobhancarr@culchethandglazebury-pc.org.uk



Neil Johnson
07977 825296
neiljohnson@culchethandglazebury-pc.org.uk

GLAZEBURY WARD



Janet Seddon
janetseddon@culchethandglazebury-pc.org.uk



Chris Smith
chrissmith@culchethandglazebury-pc.org.uk

PARISH NEWS

Community Day

Planning is underway for this year's Community Day on the 2nd May 2022. This event is an excellent way for local voluntary organisations to meet residents and raise funds for their causes. If any charitable organisation would like to reserve a stall for the event, please contact the clerk to the Parish Council to register your interest Tina Rogers-Smith via culcheth.clerk@btinternet.com

Planning Concerns

The Parish Council is consulted on planning applications. If you have an opinion on an application, please let the clerk or councillors know as soon as possible, within the 21-day consultation period.

HS2 Hybrid Bill

Culcheth and Glazebury Parish Council, Croft Parish Council and CADRAG are cooperating to create a response to the HS2 Environment consultation which has a deadline of the 31st March 2022. The amalgamated group has named itself Golborne Link Action Group (GLAG) and will work in the future to petition the hybrid bill as it passes through the houses of parliament. We have already written to the five MPs whose constituencies will be affected by this rail line, to seek their support and cooperation.

Glazebury Traffic Group

At a recent meeting of this group, members of the Parish Council were made aware that the average speed camera system was being planned for installation on roads through Glazebury. No official date or costing for this system has been given either by the Police and Crime Commissioner or Warrington Borough Council.

Culcheth Play Area

Culcheth and Glazebury Parish Council are committed to partially funding the replacement of the play area on the village green. The Parish Council has set aside funds from its budget to support the development of this important community space. We are currently waiting for proposed plans and details about available funding from Warrington Borough Council.

M62 Junction 11 Service Area

Culcheth and Glazebury and Croft Parish Councils are opposing the proposed Junction 11 motorway service area on the M62. Since Warrington Borough Council decided not to defend their planning decision at the upcoming appeal. Hopefully the joint input of the Parish councils at the planning appeal will manage to stop this needless development of the green belt.

Library Fundraiser

A fundraising evening for Culcheth Library is being organised by Friends of Culcheth Library on Friday 8th April at 7:30pm in the Village Club. Tickets are £10 and are available from the library.

**Next Parish Council Meeting is on April 12th
7:30pm at the Culcheth Centre**

Publication of Information

The Parish Council has adopted a publication of information scheme. Details of who we are, what we do and how the public can access information is published on the main notice boards, Common Lane, Culcheth and Culcheth Library and on our website:

www.culchethandglazebury-pc.org.uk



Bruce Grobbelaar shows support for grassroots football at The Village Club FC

FOOTBALLING legend Bruce Grobbelaar, the Liverpool & Zimbabwean goalkeeper was guest speaker at The Village Club FC annual Sportsman's Dinner held at the Village Club, Wigshaw Lane, Culcheth recently.

Warren Bibby from The Village Club commented that the night was a brilliant success and a complete sell-out.

Bruce (pictured 5th from the right) told some highly entertaining stories from his football past and was a real hit with the audience; and there was even a special guest appearance on the night from Chris Hall, sports presenter at Granada TV.

All funds raised from the event will help in supporting and maintaining grassroots football at the club. The football club would like to thank all of their wonderful sponsors and everyone who

attended the event for their kind generosity and ongoing support and it is very much appreciated.

It was a double success for The Village Club FC as they beat Mill Hill FC from Blackburn in the semi Final of The Lancashire Cup in front of a very large crowd at Chorley Football Club.

They will now play the winners from Whalley Range (Manchester) v Feniscowles & Pleasington FC (Blackburn) in the Lancashire Cup Final to be played at Lancashire Football Associations County Ground, Leyland on Wednesday 13th April 2022 kick-off at 7:30pm.



Family fundraiser to celebrate life of young dad who died suddenly

A special "Family Fun Day" is being organised to celebrate the life of Culcheth dad Luke Broomhead, who tragically died suddenly from a major seizure due to epilepsy aged just 31.

As well as celebrating Luke's life, who died just before his 32nd birthday, leaving behind a

one-year-old son, his family want to raise awareness of SUDEP – Sudden Unexpected Death in Epilepsy.

Luke was a local lad who went to school at Culcheth High School and was well known around the village. He had Epilepsy and on 30 June 2020 he very sadly had

a major seizure which he died from just before his 32nd birthday on 10 July leaving behind his infant son.

His sister Laura Harrison said: "We as a family were of course devastated by his sudden and unexpected death and were not aware that this could have happened to him but were informed by SUDEP action that Sudden Unexpected Death in Epilepsy is much more common than people think, with 1 in 1000 people with Epilepsy dying each year.

"However, it is not broadly discussed with people when they are diagnosed and neither are the options to lower the risk of this occurring.

"We as a family now want to celebrate Luke's birthday this year and want to raise awareness and some funds for the charity in Luke's memory and will be holding a family fun day at the Datan on 10 July to hopefully do just that."

There will be stalls, activities, food and music and an opportunity to give local small businesses the opportunity to have a stall on the day or if they have a service they want to provide to come down and get involved. Similarly, if they would like to donate a raffle prize that would be also really appreciated.

To get involved email Laura at Lharrison32@outlook.com

£2 per ticket

Under 3's Free!

CHARITY FAMILY FUN DAY!

Sunday 10th July 12-5pm

In Memory of Luke Broomhead

All funds raised will go to SUDEP Action

Stalls - Bouncy Castles - Ice Cream - Candy Floss

BBQ - Music - Tug of War - Raffle & More!

Ticket Only Event:

Contact Laura 07875386089 or buy at The Datan

Datan Sports Club, Charnock Road, Culcheth WA3 5SH



When Pirates ruled the radio waves

The speaker for Croft WI's March meeting was Brian Cullen who gave a very entertaining talk all about Radio Caroline, a pirate radio station in the 1960s.

As a young teenager Brian became hooked on listening to Radio Caroline North and was inspired to become a DJ himself. He has been a host on Radio Merseyside and Radio City and he can currently be heard on the internet station Radio Caroline Flashback playing music from the 1950s-1980s.

Brian described how in the 1960s only the BBC Home Programme and Light Programme were available to listeners in the UK. The commercial station Radio Luxembourg transmitted to the UK and did play popular music but only tunes from major record labels could get on the playlist, making it hard for new music to get airtime. In 1964 Irish businessman Ronan O'Rahilly, who had been trying to promote the musician Georgie Fame, decided to set up his own radio station. He was a rebel and he named the station after President Kennedy's daughter Caroline, who was photographed cheekily interrupting the president to play at his desk in the Oval Office. Radio Caroline began broadcasting without a licence from a ship four miles off the coast of Felixstowe, Essex. The ship had previously been a Danish ferry and was fitted with a 165ft high

transmitter mast. A few months later the company merged with a rival pirate station Radio Atlanta and that ship became Radio Caroline North, broadcasting offshore from Ramsey, Isle of Man.

Many budding DJs worked onboard including Tony Blackburn, Johnnie Walker and Emperor Roscoe and the station claimed to be reaching 39 million listeners, more than the BBC. Brian showed members some interesting photos of life onboard ship, including a wedding, as they enjoyed listening to snippets from the DJs, the music, adverts and jingles. Then in August 1967 the Marine Broadcasting Offences Act was passed making offshore broadcasting illegal and the heyday of pirate radio came to an end.

BBC Radio One was conceived as a response to the popularity of pirate radio and came on air in September 1967.

President Anne Lamming gave the vote of thanks for an evening she said brought back happy memories of being a teenager listening to her transistor radio.

The competition 'A Pirate Item' was won by Doris Friar, 2nd Sheila Glass and 3rd Janet Hughes

CLASSIFIED

CARPET CLEANING

A1 STAINBUSTERS. A Warrington company cleaning carpets, hard floors, Upholstery (Leather + fabric) and curtains in situ. FREE quotes for domestic and commercial. Approved carpet cleaners for Hancock and Woods for over 10 years. Call John on 07765 314080 (08/22)

SIMPLY THE BEST CARPET CLEAN YOU will ever have. Cleaners UK Ltd. Est over 30yrs. Have your carpets & sofas beautifully deep cleaned leaving them fresh smelling & colour restored. Latest & best methods. Dry/steam. Leather cleaning, oriental rug specialist. Professional, reliable & affordable. For more info call Neil Riley on 01925 264989/07831 336060 www.cleaners-uk.net (04/22)

CLEANING SERVICES

arleys angels

- Spring Clean Specialists
- Presenting your home for sale
- Moving house
- After building work cleans

01925 266834
... because you're worth it! (07/21)

ELECTRICAL CONTRACTORS

TRUST PROPERTY ELECTRICAL SERVICES. NICEIC Part P Approved Contractor. All Electrical work undertaken. Inspection and testing and PAT testing. All work certified and guaranteed. Call Tim on 07754409906 or 01925 601055 (05/22)

MORTGAGES

TALKING MORTGAGES - INDEPENDENT MORTGAGE ADVICE. For local, impartial and professional advice on all aspects of mortgages contact Darren Simpson on 07708 975122 (05/22)

PAYROLL

WHY TRY TO BE A PAYE EXPERT? Watkinson Black can provide a cost effective payroll service, releasing you to concentrate on your business. For further details please phone: 01925 413210 or e-mail: info@warringtonaccountants.co.uk (07/21)

PLUMBING

Fixed Price Plumbing

Fixed Competitive Prices
No Call Out Charges
Reliable Local Plumber
Fully Qualified
Fully Insured
Professional Friendly Service
Ring or check Facebook for price list

Rob - 07836 350780



TYRES

CULCHETH TYRES
New and Part Worn Tyres
Motorcycle Tyres and Servicing
01925 766 380
www.culcheth tyres.co.uk
Unit 1D, Taylor Business Park, Risley, WA3 6BL (05/22)

EVERGREEN Centre of Excellence
Express
Mobile Tyres
Local Family Business. Est 1997
01925 810000
www.expresstyres.co.uk
Order Online Today!
Branded & Budget Tyres
Cars, Vans, 4x4's, Caravans
Light Commercial
& Performance Vehicles
The tyre service that comes to you at home or your place of work
No Call Out Charge!
BRIDGESTONE MICHELIN
GOODYEAR Continental (05/22)

twentyfour seven
design & print ltd

We supply and fit all types of signage: self adhesive graphics, glass, metal, wood, perspex, foamex plastic.
Call or email for a free site visit.

01925240247 info@247print.net www.247print.net

Promote your business to thousands of local people with a

Culcheth Life
Magazine

classified for just £72 plus VAT for six months.

For more details call
01925 631592

Try something new this spring with Warrington & Vale Royal College and make 2022 the year about YOU!



In this rapidly-changing world, the need to contribute additional skills to your CV has never been so important.

Perhaps you are at risk of redundancy and are considering a career change. Maybe you are looking to learn a new hobby, meet new friends, re-fresh your skills and seek out new employment. You might even be considering strengthening your position in your current role by developing your skill-set. Whatever your motivation, Warrington & Vale Royal College is sure to have a course that suits you.

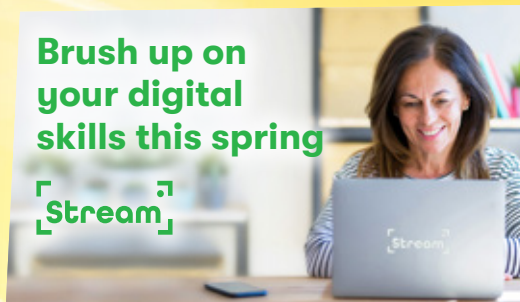
There are hundreds of courses to choose from, including:

- Beauty
Eyebrow & Lash Treatments, Facial Skincare, Gel Nail Art
- Cooking
Buckley's BBQ, Plant Based Cooking, Sponges & Cakes, Taste of Asia
- Creative Writing
- Counselling
- Creative Crafts
- Digital Photography
- Education & Training
- ESOL
- Fitness Instructing
- Floristry
Spring, Summer & Wedding Floristry
- Hair
Barbering, Festival Hair, Wedding Hair
- Holistic Therapies
- Languages
French, Italian, Spanish
- Leadership & Management
- Motor Vehicle
- Mindfulness, Meditation & Relaxation
- Personal Training
- Team Leading
- Watercolours
- Yoga
- +many more!



Brush up on your digital skills this spring

[Stream]



Digital skills have become a basic requirement of most jobs.

Don't let your digital skills stop you from making that career change - not when there is such a wide choice of digital skill courses running this spring:

- Getting the most from your device
- Essential digital skills
- ICT
- Introduction to using social media
- Staying safe online
- Telephone digital media



Aged 19+ and want to go to University?



Access to Higher Education courses starting September 2022.

Apply now: wvr.ac.uk/access

FREE DISTANCE LEARNING COURSES



Study from the comfort of your own home with hundreds of FREE* Distance Learning courses.

Enrol today: wvr.ac.uk 01925 494 400

*Terms & conditions apply



**Warrington
& Vale Royal
College**

**wvr.ac.uk
01925 494 400**