

# Lymm Life

Magazine

ISSUE 271 | FEBRUARY 2022  
DELIVERED FREE TO 5000 HOMES



urban

BUILDING PROJECTS LTD

Extension &  
Building Renovation  
Specialists

Tel: 01925 730888

[www.urbanbuildingprojects.co.uk](http://www.urbanbuildingprojects.co.uk)

## Sunset over Lymm Dam

Picture: Chris Beesley



LYMM  
PARISH  
COUNCIL

Approved by Lymm Parish  
Council as the official  
magazine for Lymm

### Horn's

Airport Transfer  
& Taxi Specialists

CALL MARTYN:  
01925 751761

MOBILE: 07881 786250  
[horns.cars@gmail.com](mailto:horns.cars@gmail.com)

 3RS TUITION

English • Maths  
Science  
11+ Tuition

For ages 6 to 18

01925 555567  
[www.3rstuition.co.uk](http://www.3rstuition.co.uk)



Burford Lane Vets  
*Your practice for life*

Now  
Open!



Register your pet for free

Regular news updates at [www.lymmmlife.co.uk](http://www.lymmmlife.co.uk)



# Editor's Comment



**Editor**  
Gary Skentelbery

**Production**  
James Bryan

**Advertising**  
James Balme  
Telephone  
01925 631592

**Editorial**  
01925 623633

**Email**  
info@lymmlife.co.uk

**Websites**  
www.lymmlife.co.uk  
www.culchethlife.com  
www.frodshamlife.co.uk  
www.warrington-worldwide.co.uk  
www.warrington.tv

**Address**  
New Media Centre  
Old Road Warrington  
WA4 1AT

*Lymm Life is published monthly by Orbit News Ltd.*

*The contents of this magazine are fully protected by copyright and nothing may be reprinted or reproduced without prior permission of the publishers.*

*The publishers are not liable for any statement made or opinion expressed by third parties in this publication.*

*Printed by TwentyFourSeven*

**AS I write these notes, hopefully, the surge in new COVID-19 cases caused by the Omicron variant has now peaked and we will now be able to soon be able to carry on with our lives, living the new normal.**

Who would have thought two years ago, this terrible virus would have had such a huge impact on all our lives and we are certainly still not out of the woods, with many still suffering and lots of ongoing issues with long COVID, mental health, delayed operations, undiagnosed health conditions and employment.

But thankfully spring will soon be in the air and we can look to the future with optimism.

I would like to take this opportunity to thank those who have worked so hard helping others and those who have given up their time volunteering to help with the various community activities which have continued

during these unprecedented times - you all help make Lymm a special place.

Meanwhile thanks to Chris Beesley for sharing a stunning picture of Lymm Dam at sunset on our facebook group recently - for those of you not on facebook we have shared the image on our front cover. If you have any interesting pictures of Lymm feel free to share them with us - and you never know you could make the front page!

## "Traffic champions" wanted for transport plan

LYMM is looking for "traffic champions" - volunteers prepared to put hi-tech sensors in their windows to capture information about passing traffic.

The unobtrusive, ultra-low powered sensors would not capture people or vehicle registration details - simply data about traffic volumes, types, timing and speeds.

Lymm Parish Council believes the information gathered could help them come up with a transport plan to cope with the way traffic in the village has changed over the years.

The locations that require volunteers can be found at [www.lymmparishcouncil.gov.uk/traffic-survey](http://www.lymmparishcouncil.gov.uk/traffic-survey) along with further information about the project, how to express interest or to sign up.

Parish Councillor Steve Towndrow, said: "Lymm Parish

Council's aim is that these sensors will put an evidence-based approach into the wider conversation of traffic management, road safety, noise, pollution, foot fall and help influence a traffic management strategy that benefits

Lymm residents, businesses and visitors."

Further information can be obtained from Rod Tucker, assistant clerk to the council, from [assistantclerk@lymmparishcouncil.gov.uk](mailto:assistantclerk@lymmparishcouncil.gov.uk) or 07555 252387.

**N & J STANHOPE**  
**Coal and Log Supplies**  
Best Quality Coal  
Smokeless Fuel  
Logs Supplied in Bags and Bulk  
**Caravan Storage**  
**Open 6 Days. Closed Sunday**  
Broomedge Farm  
Burford Lane, Lymm WA13 0SE  
Tel: 752830  
Mobile: 07979 785 421

**WINNERS**  
Caring UK Awards 2021  
Excellence and Innovation  
in Dementia Care  
**RUNNERS UP**  
NAPA 2021 Arts in Care



**OPEN for**  
New Admissions  
Virtual & In-house tours  
available

## Award-winning dementia friendly Care Home

Exceptional care & facilities – including sensory garden & full activities programme



Dementia Care • Residential Care • Respite

[www.keatehouse.com](http://www.keatehouse.com)

Call: 01925 752091 Email: [enquiries@keatehouse.com](mailto:enquiries@keatehouse.com)

9 Brookfield Road, Lymm, Cheshire WA13 0QL



NAPA Award Winners 2017, 2018  
Plus 2020 – Best Activity Team





# Lymm care home wins National Caring UK Award



**KEATE House at Lymm has been crowned winners of 'Excellence and Innovation in Dementia Care' in the 2021 Caring UK's prestigious industry Awards.**

Keate House staff team members attended the glittering ceremony on Thursday 2nd December where they received the award after being nominated across two categories for Regional Care Home of the Year – North, and for Excellence and Innovation in Dementia Care.

Care Home Manager Diane Clarkson praised and thanked the team for the fantastic achievement: "We are absolutely delighted that Keate House has been recognised and awarded the top prize for Dementia Care provision by Caring UK. After over 18 months of such difficulty in the Care Homes sector receiving this prestigious accolade feels more special than ever.

"The Clarkson family would like to express our sincerest

appreciation and heartfelt thanks to the whole staff team who have been so tremendously dedicated and worked so hard in such difficult circumstances, to ensure that all our residents receive such exceptional levels of care. Achieving this award at the end of 2021 is the true icing on the cake when we have now been able to move towards more normal times.

"We also thank all our wonderful residents and their families for their patience, support and for sharing our passion for true excellence in care."

Full details of the Caring UK Awards and categories can be viewed at [www.caringukawards.co.uk/categories](http://www.caringukawards.co.uk/categories)

## Professional tree services

**Free Quote**

- Domestic
- Commercial
- Site Clearance
- Vegetation management
- Stump grinding
- Re-planting
- £10m public liability insurance

**Beechwood Industries**  
www.beechwoodindustries.co.uk

For more information, please call us on **01925 860544**

CP CS   Citb   Constructionline   City & Guilds NPTC Qualified   CHAS

# SPRING INTO GARDENING WITH PRIMROSE

**SEED POTATOES,  
ONIONS & GARLIC BULBS**

**SPRING BLOOMING  
PLANTS**

**PRIMROSE HILL**  
NURSERIES  
Est. 1935

OPEN TO THE PUBLIC AND TRADE: MON-SAT 8.30am-5pm. SUN 10am-4pm.  
WARRINGTON ROAD, HIGH LEGH, KNUTSFORD, CHESHIRE WA16 0SQ. 01925 752635



# What's On in conjunction with Lymm Parish Council



**LYMM PARISH COUNCIL**  
Tuesday February 8th, 7:30pm  
Lymm Parish Hall  
Check [www.lymmparishcouncil.gov.uk](http://www.lymmparishcouncil.gov.uk) for details.

**LYMM THURSDAY EVENING BRIDGE CLUB**  
Lymm Village Hall every Thursday 7pm

**MAPLE LODGE ART GROUP**  
Meet each Wednesday 9.00am - 11.30pm  
Oughtrington Community Centre, Lymm  
Details: 01925 755126

**ROTARY CLUB OF LYMM**  
Meets at Warburtons Parish Rooms on the 2nd and 4th Wednesday each month at 8pm  
Contact 01925 919053

**LOVING HEARTS & HANDS**  
Knitting for charity at Lymm Methodist Church, 2nd and 4th Thursday each month.  
1.30pm - 3pm. Details: 01925 753298

**MARKET LUNCHES**  
Eagle Brow Methodist Church  
3rd Thursday in the month  
Light lunches 12 noon till 2pm. All proceeds to Youth For Christ and YMCA Room at The Inn

**GARDENING CLUB**  
Meet Third Wednesday of the month  
Lymm Baptist Church, Higher Lane. 7.30pm  
Visitors welcome. £2 includes tea and cake

**LYMM FLORAL ART GROUP**  
Lymm Village Hall  
Third Monday of the month (except August and December) at 7.30pm. Visitors most welcome. Contact: 07876 176501  
[lymmfloralart.org.uk](http://lymmfloralart.org.uk)

**LYMM PHOTOGRAPHIC SOCIETY**  
Every 2nd and 4th Wednesday (ex July & Aug), 7.30pm  
Spread Eagle pub, Eagle Brow.  
Details: [www.lymmphotosoc.org.uk](http://www.lymmphotosoc.org.uk)

**LYMM WINE AND BEER CIRCLE**  
3rd Wednesday of the month, 8pm  
The Spread Eagle Hotel  
Details: 01925 756444

**LYMM CONCERT BAND**  
Rehearsals every Thursday evening  
United Reformed Church, 8pm.  
Details: 01925 752934

**LYMM WI**  
Every second Wednesday, 2-4pm at Lymm Youth and Community Centre. Visitors welcome.

**LYMM BOOK CLUB**  
Second Thursday of the month 7.30pm,  
Spread Eagle, Eagle Brow. Details 01925 752371


**4LYMM VOLUNTARY ORGANISATION**  
Meet every 2nd Monday at 7.30pm in the Bridgewater Club, Whitbarrow Road.  
All welcome. Tel 01925 756378 for details.

**LYMM AND DISTRICT MIXED VOICE CHOIR**  
Every Wednesday 7.30 Lymm Methodist Church. Contact 01925 601664.  
[cath@stones.co.uk](mailto:cath@stones.co.uk)

**PROBUS CLUB OF LYMM**  
A small, friendly social club for retired people. Meets on second and fourth Tuesdays at 2:15pm.  
Details: [www.lymmprobus.club](http://www.lymmprobus.club)

**LYMM DINGLE PROBUS CLUB**  
A friendly busy social club for retired men. Meets on alternate Thursday afternoons at Lymm Baptist Church.  
Details: [www.lymmdingleprobus.club](http://www.lymmdingleprobus.club)  
Club secretary 01925 759995

**FRIENDS OF LYMM LIBRARY CRAFT GROUP**  
Lymm Sanctuary Hub  
Fridays 1.30-3.00pm  
Details: 01925 754016



**LYMM  
PARISH  
COUNCIL**

Tuesday February 8th, 7:30pm  
See parish council website for details.

# Lymm Produce Show set to return after successful comeback

**AFTER making a successful return plans are in the pipeline for the Lymm Produce Show in September.**

Last September there was a fantastic show of home grown and homemade produce after participants dropped off their entries at Maple Lodge in the morning and the show was open to the public once judging was complete. There were refreshments and home-baked cakes on sale in the afternoon before an auction of many of the entries.

Local growers entered categories that included fruit, vegetables and flowers. The best in show was a mammoth pumpkin grown by

Florence Askew and her Grandad which weighed in at 30.9kg!

In the categories for cooks and bakers the biggest entry was in the homebrew beer category. The two judges from Lymm Round Table had to taste and rate no less than 21 beers. The Round Table home brew trophy was eventually awarded to Donald Reid's Baltic Porter.

Following this successful relaunch the Show plans to return to Maple Lodge with a planned date of September 4.





**DELICIOUS MILK FROM OUR HAPPY COWS  
DELIVERED TO YOUR DOOR!**

Here at Pool Farm we take good care of our free-range dairy cows. They produce fresh, quality milk which is bottled in our own farm dairy and delivered to local doorsteps. We also stock a range of associated products such as eggs and potatoes, all sourced from local farms.

Call 757655 or email [milk@broadsmith.com](mailto:milk@broadsmith.com) to discuss early morning deliveries to your doorstep and follow us on Facebook or Instagram at @broadsmiths where you can keep up to date with life on the farm!





**G P BROADSMITH & SON**  
POOL FARM, POOL LANE,  
STATHAM, LYMM, WA13 9BW  
TEL: 01925 757655  
YOUR LOCAL DAIRY Est. 1932

Begin your journey to  
**mental wellness**

Join us for our Open Event on  
Saturday 29th January





The brand new Cheshire Wellness Centre is now open, providing a safe space to support you on your personal journey to mental wellness in the most beautiful and tranquil setting.



"I was inspired to open the wellness centre when I discovered there wasn't a lot of help available to sustain my whole journey through mental health and addiction."  
**Bob - Founder**

Our services include Counselling, Psychoeducational Courses, Holistic Therapies, Yoga, Mindfulness Courses, Wellness Walks, Clinical Hypnotherapy, Nutritionist and more, all offered as part of an individual care plan tailored to support your well-being.

**FIND OUT HOW WE CAN SUPPORT YOU: [cheshirewellnesscentre.co.uk](http://cheshirewellnesscentre.co.uk)**



**01925 752682**  

The Barn, Lymm Marina, Warrington Lane, Lymm WA13 0SW

## ANDY CARTER MP

WORKING HARD FOR WARRINGTON SOUTH

**Here to Help**

As your Member of Parliament I am here to help residents with any local or national concerns. I am absolutely committed to providing advice and support to all Warrington South residents. So if you need help, please don't hesitate to get in touch.

Andy



**Contact Andy**

- 01925 231 267
- [andy.carter.org.uk](mailto:andy.carter.org.uk)
- [andy.carter.mp@parliament.uk](mailto:andy.carter.mp@parliament.uk)
- @MrAndy\_Carter
- [AndyCarterWarringtonSouth](https://www.facebook.com/AndyCarterWarringtonSouth)

Warrington South Constituency Office  
1 Stafford Road, Warrington WA4 6RP

# LEADERS IN FAMILY LAW.

Delivering the results when it matters

## Specialising in:

Divorce & Separation

Financial Settlements

Child Related Matters



**Stockton Heath** 01925 912 277

**Hale** 0161 926 1430

**Manchester** 0161 834 2623

[caroline.swain@bpsfamilylaw.co.uk](mailto:caroline.swain@bpsfamilylaw.co.uk)

[www.bpsFamilyLaw.co.uk](http://www.bpsFamilyLaw.co.uk)



Advertiser's announcement

# Urgent Treatment Centres

Helping you make the right choices this winter

**Accident and Emergency departments are under severe pressure this winter, due to the latest COVID-19 surge meeting seasonal demand for emergency or urgent care. Warrington Hospital's Emergency Department is no different; with record numbers of patients seeking treatment.**

Many of these patients, however, do have more suitable alternatives to Warrington Hospital's Emergency Department. NHS Urgent Treatment Centres in Runcorn and Widnes can often be the better choice when you need urgent but not emergency treatment.

Choosing to attend one of the Urgent Treatment Centres has many benefits this winter – not only will you experience shorter waiting times, but you will be freeing up resources at the Emergency Department at Warrington Hospital for more seriously ill patients.

Both Urgent Treatment Centres are open 8am to 9pm, seven days a week, 365 days a year (including bank holidays). Please arrive before 8pm to allow time to be seen before closing.

Urgent Treatment Centres (UTCs) provide x-rays and you can be seen

here for a wide range of issues that require urgent treatment, but are not life-threatening, such as:

- Minor cuts or wounds
- Bites, stings, rashes and allergic reactions
- Minor burns and scalds
- Sprains, strains and joint pains
- Earache or eye injuries and infection
- Emergency Contraception

Where to find your Urgent Treatment Centres:

Runcorn Urgent Treatment Centre  
Nightingale Building,  
Hospital Way Runcorn  
Cheshire  
WA7 2DA  
Telephone: 01928 714567

Widnes Urgent Treatment Centre  
Health Care Resource Centre,  
Oaks Place Caldwell Road  
Widnes  
WA8 7GD  
Telephone: 0151 495 5000

If you travel by car, there is onsite parking (sat nav WA8 7GD). There is also an Urgent Treatment Centre in St Helens at the Millennium Centre

**Anyone who has a cough, high temperature or any symptoms of COVID-19 should only attend Runcorn Urgent Treatment Centre when they can provide evidence of a recent negative PCR test.**

**This requirement applies only to Runcorn UTC**

You can find current waiting times for Runcorn Urgent Treatment Centre, as well as Warrington Emergency Department at [www.whh.nhs.uk](http://www.whh.nhs.uk).

A free shuttle bus service runs throughout the day, seven days per week between Warrington Hospital to Halton Hospital/Runcorn Urgent Treatment Centre and takes only 25 minutes.

**Not sure where to seek help or advice?**

If you need urgent medical advice



and are not sure which is the best place for you to seek help and advice, then please contact NHS 111 free at [111.nhs.uk](http://111.nhs.uk) or call 111. NHS 111 is available 24 hours a day, 7 days a week.

You will answer questions about your symptoms on the website, or by speaking with a fully trained advisor on the phone. Depending on the situation, you receive health information and advice and will find out what local service is right for you.

NHS 111 can also provide appointment slots for patients at local Urgent Treatment Centres, where appropriate.

If you're experiencing a 999 emergency, which means that it is critical or life-threatening, then phone 999 for emergency help.

Making the right choices helps us all. Please let's do it together this winter.



## Just think 111 online first

When you think you need A&E, go to [111.NHS.UK](http://111.NHS.UK). We can arrange for you to be seen at an urgent treatment centre.





# SOUND ADVICE

SAFELY DELIVERED



## HEARING PROBLEMS?

Feeling more isolated and anxious during lockdown? Are you having trouble hearing TV or talking on the telephone?

VISIT US AT ALTRINCHAM HEARING CENTRE  
FOR ALL YOUR HEARING NEEDS

Visit us for a complete inspection of your ear canal and eardrum. If your problem is ear wax, we can remove it for you.

We offer appointment times at short notice to suit you and have a very competitive pricing structure of £70 for both ears or £50 for a single ear.

Alternatively, we specialise in the very latest digital hearing technology and have the best solutions to meet your personal hearing needs.

BOOK YOUR APPOINTMENT TODAY

**0161 989 1288**

### VISIT US FOR:

- Free Hearing Tests • Latest Technology Demos
- Tinnitus Advice • Custom Hearing Protection

### WE OFFER:

- A Bespoke Dedicated Service
- Independent Advice • Home Visits



Local & Independent Family Run Business

In addition to an enhanced cleaning regime we are taking additional precautions with regards to Personal Protective Equipment, including contactless hand sanitiser, IIR type masks, gloves and aprons all which have all been approved by our governing bodies.



CALL US ON **0161 989 1288**  
TO BOOK YOUR **FREE APPOINTMENT**



ALTRINCHAM  
Hearing Centre

No 7 The Downs · Altrincham · WA14 2QD  
0161 989 1288  
pritesh@altrinchamhearingcentre.co.uk  
www.altrinchamhearingcentre.co.uk



# On with the show at Lymm D

**IT was cold, it was wet and the country was in the midst of a pandemic but villagers showed true community spirit at the annual Lymm Dickensian Day.**

For the first time in two years Town Crier Peter Powell led the procession up Whitbarrow Road and into Lymm village centre.

He was joined by members of the parish council, local school children, morris dancers and local

groups, including Father Christmas on the Lymm Rotary Float.

There was little let-up in constant drizzle for the parade which was headed by members of Lymm Runners, all dressed as Santas.



Commercial • Commercial Property • Litigation  
 Employment • Wills • Trusts • Probate  
 Personal Injury • Conveyancing • Crime • Family & Divorce

**01925 231000**  
**info@fdrlaw.co.uk**

Serving Warrington and surrounding areas

www.fdrlaw.co.uk





# Pickensian Day



## 'World famous' Lymm Panto raises £20k for Grass Roots Clubhouse Appeal



AFTER a two-year Covid hiatus, Lymm Rugby Club re-launched the world-famous Lymm Panto, 'Aladdin Lymm' and successfully raised over £20k for the Lymm Grass Roots Clubhouse Appeal.

Running for nine shows over three weekends, the Lymm Panto cast and crew gave it their all, entertaining a total audience of 900, and resulting in a show that has been widely acclaimed as one of the best yet.

"We restricted numbers due to Covid protocols and audience members all had designated seats," commented Panto Impresario Simon Plumb. "This worked really

well and we'll be using this system in future, but with slightly larger audiences hopefully.

"The audience response has been overwhelming and we seem to have a hit on our hands. I am constantly being asked how we performed the flying carpet scene," he noted dryly.

"It is a massive team effort from the Rugby Club and I would like to thank all involved, including the local business community who donated raffle prizes and advertised in the Lymm Panto programme. We are already planning the 'Wizard of Oz' for next year so watch this space," concluded Simon.



**Call us on: 01942 607250**  
www.elbfireplaces.co.uk  
70 Twist Lane, Leigh, Lancashire WN7 4DP

**Fire Surrounds, Stoves, Gas & Electric Fires**

Established  
30 YEARS



No need to change your carpet - made to measure fireplaces

Over 75 displays over 2 floors

Live wood burning stove on display

Is your conservatory too cold to use in Winter?  
Why not install a stove?

## Maskell+Josephson THE OPTOMETRISTS

### Do you suffer with dry eyes?



By Anthony Josephson

In January we launched our brand new dry eye clinic in our Altrincham practice. This uses state of the art technology to diagnose the causes of dry eye and allows us to offer treatment options that best suit an individual.

More and more people suffer with dry eyes these days due to increased time spent on screens or other environmental factors, especially things like central heating in the winter.

Symptoms of dry eyes include itchy eyes, sore eyes, red eyes, fluctuations of vision and to a lot of people's surprise watery eyes (especially in the cold and wind). Often these can be helped with things like eye drops but eye drops do not solve any problems but rather just reduce symptoms whilst the underlying problem gets worse and worse.

If you suffer with dry eyes it's really important that you find out the cause and try and treat the cause and not just the symptoms.

In addition to this both our Warrington and Altrincham practices have some amazing new stock of frames and lenses available and the only way to really experience these is to book in at one of our sites to see for yourself.

As always, every 2nd set of lenses is half price too!

**We're proud to be one of the only private-only opticians in the country** and the only ones in Altrincham and Warrington. Our private plan costs just over £6 per month and covers all of your appointments and eye care (with an upgrade fee for contact lens wearers). We offer a household plan for £15 regardless as to how many people are on the plan. All of our glasses can be paid off in monthly, interest-free, instalments too.

For more information please get in touch.



**Maskell + Josephson, Altrincham**  
16 Regent Road, Altrincham, WA14 1RP  
0161 941 6517

**Maskell + Josephson, Warrington**  
Unit 20/21 Warrington Market, WA1 2NT  
0161 549 2560

[www.maskelloptometrists.com](http://www.maskelloptometrists.com)  
[anthony@maskelloptometrists.com](mailto:anthony@maskelloptometrists.com)



# Brain haemorrhage survivor from Lymm stars in national BBC TV appeal

**A LYMM woman who survived a brain haemorrhage starred in a national BBC TV appeal – presented by Sir Michael Palin shortly before Christmas.**

The Brain Charity's Lifeline appeal, which aired on BBC1 told the stories of three people who have benefitted from the Liverpool-based charity's support – Rachel, Lindsey and Sammee.

The eight-minute film featured former classroom assistant Rachel, 46, from Lymm, who spent two weeks in a coma and had to learn to walk and talk again after experiencing a brain haemorrhage.

After an operation to remove the tangle of blood vessels which had caused the haemorrhage, Rachel began to make a physical recovery but struggled mentally.

She found it difficult to leave the house due to low confidence around her speech, which had been affected, and experiencing debilitating night terrors that she was back in intensive care.

In May 2020, she was offered six weeks of free counselling from The Brain Charity – which she said was a lifeline. She has since decided to give back by becoming a volunteer phone befriender.

Rachel said: "There have been times I've been really frustrated and angry with myself as I haven't been able to get my words out.

"Being able to talk to people who had already gone through

what I had gone through years before showed me I had a future.

"The Brain Charity has been a lifeline, particularly during COVID-19.

"It means a great deal to me to be in touch with people like me. It shows me that I'm not alone.

"My phone befriending role gives me a purpose.

"I enjoy getting to know new people, some of whom I have experiences in common with – meaning I can relate to them very well."

The Lifeline appeal also featured mum-of-three Lindsey, from Dunbar, Scotland, who was diagnosed with secondary progressive MS in her brain in October 2020.

Finally, the programme focused on 18-year-old Sammee, who has Autism Spectrum Disorder (ASD) and recently moved to Liverpool from London.

Sir Michael Palin donated his time to present The Brain Charity's appeal due to personal experience of the impact of neurological conditions – his wife was diagnosed with a benign brain tumour more than 25 years ago, and he saw his Monty Python colleague Terry Jones face the effects of dementia before his death last year.



He said: "Neurological conditions have the potential to wreak havoc on the lives of those they affect; something my family and I can relate to.

"My wife was diagnosed with a benign brain tumour more than 25 years ago, and it was a worrying and frightening time for our family.

"That's why the important work of The Brain Charity is a cause very close to my heart.

"I was delighted to support them by presenting their Lifeline appeal, and hope the film encourages

many much-needed donations for such a worthwhile cause."

The programme is available to watch on BBC iPlayer: [www.bbc.co.uk/programmes/m0012v7q](http://www.bbc.co.uk/programmes/m0012v7q)

All funds raised from the Lifeline appeal will go towards The Brain Charity's Sixmas appeal, which is raising £60,000 for urgent mental health support for the 1 in 6 people left out in the cold to deal with their neurological condition alone this Christmas. Make a donation or find out more at [www.thebraincharity.org.uk/sixmas](http://www.thebraincharity.org.uk/sixmas)



## E SMITH AND SON PLANT CENTRE

[WWW.LYMMPLANTS.CO.UK](http://WWW.LYMMPLANTS.CO.UK)

Over 60 years in Lymm and still growing!

THE NURSERY, BOOTHS LANE, LYMM, WA13 0PF  
01925 752459

**PRIMULA SPECTACULAR!!!**  
**Over 25 different types and colours of Primula**  
**Choose your Favourite!**

Open All Year Round for  
Seasonal Bedding, Planters and Hanging Baskets  
Perennials, Shrubs and Trees  
Special Occasion and Celebration Plants  
Gift Vouchers Available

**OPEN 7 DAYS: MONDAY TO SATURDAY 10AM - 4PM | SUNDAY 11AM - 3PM**



Advertiser's announcement

# How to tackle energy price-rise blues this January

**You may already have had a big shock when your energy supplier last quoted you for your new contract or if you've compared a recent bill to one several months ago. Or maybe you've witnessed the impact of an energy supplier going bust or being taken over.**

Sadly, there is more energy price-rise heartache to come. Domestic energy prices are set to rise by 45% to 50% in the Spring according to many energy analysts. Wholesale prices continue to rise steeply and Ofgem is due to raise the price cap on energy bills significantly on 1 April.

Free, local and impartial help is at hand through this January. Information and advice on how to mitigate the effects of energy price rises will be provided at the 'LEAF tackles Energy' drop-in events on 20 January (9.30 to 12.30) and 22 January (12.30 to 16.00) 2022 in the Lymm Sanctuary Hub and Business Centre, Lymm Library Annex.

The energy events are part of the national Big Energy Savings Network programme and are delivered locally by Lymm Community Energy. Topics will include energy efficiency, green energy supply, heat pumps, solar panels and carbon footprint measurement. Information on the new boiler upgrade grants and other financial support will also be

provided.

The energy event is the first in a series of environmental support events organised by LEAF - Lymm Environment Action Forum - the umbrella group that unifies Lymm's environmental groups and encourages local residents to "turn over a new leaf".

Several events are planned throughout 2022. The 'LEAF tackles Waste' event planned for 25 - 27 March will include information and interactive activities on how we can all 'reduce, reuse and recycle' in order to minimise the waste we produce.

Further environmental event themes will cover: Food (23 Jun) to coincide with Lymm Food Fest, Transport/Cycling (May/June), The Natural Environment (Sept) and Leaf Tackles Christmas (Nov).

For more information and contact details, visit: [www.lymmenvironmentactionforum.co.uk](http://www.lymmenvironmentactionforum.co.uk) or [www.facebook.com/LymmEnvironmentActionForum](https://www.facebook.com/LymmEnvironmentActionForum)

# Your pet questions answered

By Dr Diane Wilshaw  
Lymm Veterinary Surgery



**Q: How do I know if my guinea pig's teeth are overgrown?**

A: Guinea pigs are constantly gnawing on food, hay, or grass which helps keep their teeth in shape. If they don't gnaw enough, their teeth will become overgrown which will lead to dental issues.

Symptoms of overgrown teeth are decreased appetite, sore mouth, and long teeth. If you think your guinea pig has overgrown teeth it is very important to take them to the vet so that they can be treated otherwise they run the risk of developing other issues further down the line.

**Q: My parrot has been plucking his feathers out, why is he doing this?**

A: There are several reasons why a parrot may start plucking its feathers. For example, stress, mites or even an allergy. A vet will need to examine your parrot and may request that blood tests are carried out to find the route of the problem. They will then be able to make a treatment plan, based on their findings.

**Q: My pet snake has an area of skin that is inflamed and red. Will this clear up when they next shed their skin, or should I take it to a vet?**

A: This sounds like it may be dermatitis. Dermatitis happens when a snake is kept in areas that are too damp, or not cleaned regularly enough. If left untreated the dermatitis will cause permanent skin damage or it may get infected, which will lead to further complications. Your vet will be able to diagnose your snake and provide a suitable course of treatment for them.

**Q: When should I get my dog neutered?**

A: Dogs can be neutered from 4 months old. The procedure is a routine operation, and your dog will have anaesthetic for during the surgery and painkillers for afterwards, so they won't feel a thing. You should be able to collect your dog from the vets a little while after they have come round from the operation and your vet will be able to help you with any aftercare questions you have.

**Q: My cat has a thorn in its paw, can I remove it, or do I need to let a vet get it out?**

A: If the thorn is only in your cat's paw, you can remove it. Clean the area thoroughly, take a clean pair of tweezers and grab the thorn as close to the skin as possible and pull it out in the direction of entry. Give the area a squeeze to make sure that the thorn was fully taken out. Finally give the area another clean.

If the thorn is in a joint, it is important that your vet removes it to make sure there is no further damage to the joint.



## LEAF tackles Energy

9.30-12.30, Thursday 20 January 2022

12.30-16.00, Saturday 22 January 2022

Lymm Sanctuary Hub & Business Centre, Davies Way, Lymm, WA13 0QW

**Want to understand & reduce your energy bills?  
Concerned by climate change, energy prices & turmoil?**

**Get free, impartial info & advice this January on:**

- Energy efficiency, suppliers & bills
- Green energy, heat pumps & solar panels
- Carbon footprint measurement
- Financial support and grants

**Further 'LEAF tackles' Events in 2022**

Waste (25-27 Mar) | Food (23 Jun) | Transport/Cycling (tbc)  
The Natural Environment (Sept) | Christmas (Nov)

LEAF is an umbrella group to unify Lymm's environmental groups & encourage local residents to "turn over a new leaf"



[www.lymmenvironmentactionforum.co.uk](http://www.lymmenvironmentactionforum.co.uk)  
[www.facebook.com/LymmEnvironmentActionForum](https://www.facebook.com/LymmEnvironmentActionForum)

**WE NOW OFFER 15 MINUTE  
CONSULTATIONS WITH  
OUR VETS AS STANDARD**



**Gold standard veterinary care  
at Lymm Veterinary Surgery**



10 Booth's Hill Rd, Lymm WA13 0DL

**01925 752721**



## EXCHANGE YOUR GOLD AND SILVER FOR INSTANT CASH



All items of jewellery accepted

### Did you know...?

We accept silver jewellery, cutlery, tea sets, spoons, cigarette cases, candlesticks, trophies, trays, medals, coins and pocket watches.

**ROLEX WATCHES WANTED!  
ANY CONDITION**

Open: Tuesday-Saturday: 10am - 5.30pm

1 London Road, Stockton Heath  
(First floor entrance on Fairfield Road)

07544 486 621



**GOLD & SILVER  
BULLION DEALER**

# Tennis courts to disappear under housing development



**A PLAN to build four houses on the courts at Manor Road Tennis Club, Lymm has been given the go-ahead - despite objections from more than 50 nearby residents.**

The decision by Warrington Borough Council's development management committee means an end to tennis in Manor Road, where the game has been played for more than 50 years.

But the club has merged with nearby Lymm Rugby Club where four new floodlit, all-weather courts are being built as part of a major redevelopment project. Residents who opposed the scheme were supported by Lymm Parish Council, who argued that it represented over development of the site and would lead to parking problems, with cars parking in the street.

They were also concerned about the impact on the ecology of the site and said the new houses - three four bedroomed and one three bedroomed would

compromised the existing Manor Court apartments.

Neighbours claimed there had been a lack of consultation and said development plans did not show existing properties accurately. They argued that the scheme should not be used to provide funding for the re-development of the rugby club. A smaller scheme would be more acceptable.

But planning officers said the tennis courts would be replaced with new ones at the rugby club. They argued that the development would have no harmful impact on nearby residents and the provision of four new houses would contribute towards the borough's housing need.

It is hoped the new courts will be ready for play by next summer.

## Need IT Support at Home?

- Skilled and Friendly Technicians
- PC and Laptop Support
- Home Visit or Remote Dial-in
- Antivirus/Malware Check
- Unlimited Support Time
- Equipment Supplied: Laptops, PCs, Printers & Bespoke Builds



**aspire**  
Computers Ltd

**Call our Team: 01925 251143**

sales@aspire-computers.com | www.aspire-computers.com

**Only £895 for a fully fitted electric door.**

Gotta get a Garolla.

**NOW ONLY £895** WAS £1394 INC VAT

**WHAT'S INCLUDED:**  
FREE MEASURING & FITTING  
TWO REMOTE CONTROLS  
ACOUSTIC & THERMAL INSULATION  
AVAILABLE IN 21 COLOURS  
DISPOSAL OF YOUR OLD DOOR

Offer valid for openings up to 2.6m wide & inc: 2 remote controls, 55mm white slats, internal manual override.

**GAROLLA**  
ROLLER SHUTTER DOORS  
GOTTA GET A GAROLLA

CALL US TODAY  
**01925 205 008**  
MOBILE  
**07537 149 128**  
www.garolla.co.uk

Garolla garage doors are strong and solidly built. They're made to measure in our own UK factories. The electric Garolla door rolls up vertically taking up only 8 inches inside your garage. Our expert installers will fit your new door and take away the old one so there's no mess.

Give us a call today and we'll come and measure up completely Free.

## Love your garden!

Monthly gardening advice from Primrose Hill Nurseries



Rob Groom  
Nursery Manager

- Deadhead winter pansies and other bedding regularly, and remove any foliage affected by mildew
- Buy seed potatoes, onions, shallots and garlic bulbs ready for planting
- Prune rose bushes this month while they are still dormant. Cut branches back to just above a bud, making sure to remove any crossing or dead branches
- Prune climbers such as Honeysuckle, summer flowering Clematis and Jasmine. This will encourage growth and blooms later in the year



**PRIMROSE HILL**  
NURSERIES  
EST. 1935

Warrington Road, High Legh, Knutsford, Cheshire WA16 0SQ  
01925 752635





Open Evenings are a great way for you to explore our campuses. You will get to chat to current students, meet with industry-experienced course tutors and tour our state-of-the-art facilities.

Register online: [wvr.ac.uk/openevening](https://wvr.ac.uk/openevening)

## Meet our students:

### Phillippa Makinson - Level 2 Hospitality & Catering



Phillippa Makinson chose to study at Warrington & Vale Royal College due to the excellent reputation of the college and its award-winning restaurant. Phillippa, who previously studied at Culcheth High School, feels she has gained lots of confidence throughout the course, saying: "The course has definitely boosted my confidence. I really like working with the public, and it's a great preparation for the working world. My favourite part of the course is learning how to present the dishes to a professional standard."

### Sean Bruce - Level 3 Sport



Sean Bruce has always been passionate about sport, particularly football, and knew he wanted to pursue a career in this field. Former Hope Academy student Sean is thoroughly enjoying his course, saying: "The course is really fun and the teachers are great and easy to talk to." After completing his course, Sean intends to head to university to study physiotherapy. He believes everything he is currently learning about the musculoskeletal system will help him to achieve this goal.

### Matt Nash - Level 2 Carpentry & Joinery Apprentice



Matt Nash decided to enrol onto an apprenticeship after deciding university was not the right pathway for him. He has always been very hands-on and is now looking to secure a highly practical career. Matt is employed by Warrington-based construction company Emerald Bay and is really enjoying his apprenticeship. He says: "Apprenticeships are a great way to learn. I'm earning a wage as well as getting a qualification. What I learn in college ties in with what I'm doing in the workplace."

### Layla Thorpe - Level 2 Media Makeup



Layla Thorpe has always had a passion for make-up and loves the opportunity to create new looks each day. Layla, who previously attended St. Edmund Arrowsmith school, especially enjoys special effects and plans to progress onto university to continue her studies. Layla believes the course has really helped improve her skills, saying: "My tutors are amazing and provide lots of feedback on how to improve. We get lots of free rein to be creative and bring our ideas to life."

## Apprenticeships Presentation

Warrington Campus, 6.00pm & 6.45pm

Looking to earn whilst you learn? Our friendly and knowledgeable Apprenticeships Team will be on hand to talk to you about apprenticeships.

Come along at 6.00pm & 6.45pm to find out more.







# LYMM PARISH COUNCIL NEWSLETTER

Lymm Parish Council wishes a happy and safe New Year to all Lymm residents and visitors.

We are grateful to Lymm Radio for stepping in and broadcasting the music for Carols from The Cross to enable it to be a virtual event for the second year running. We very much hope that we can welcome everyone to the traditional Lymm Cross event next year, but we also hope to widen its appeal by broadcasting it again and possibly having smaller outdoor Carols events around the village. In recent years, the village centre has been filled to capacity and beyond, so a change is going to be necessary. We hope a hybrid event will suit everyone.

Highways issues remain a concern for residents so the Parish Council is implementing a low cost, innovative traffic-monitoring scheme so that we have our own evidence about the impact of particular events on Lymm's road network. Many people are contacting us about the continuing pavement closure near Lymm Dam following the wall collapse. This should be resolved soon but has been held up by the complicated legal issues surrounding liability and ownership of the walls.

Allotment holders, and those on the waiting list, are being informed about proposed improvements to the allotments and a fairer charging scheme, which is more in line with how other councils charge for allotments to ensure their costs are covered. There is a lot of demand for allotments and the Parish Council is on the lookout for other suitable sites.

During the coming year, work will start on major repairs to the village hall roof. We hope this can be achieved with as little disruption as possible. While planning the works we have had advice from the Conservation Officer for Warrington Borough Council who emphasised the important contribution of the Village Hall to the character of Lymm's Conservation Area. This is being seriously considered when planning the works and trying to retain the distinctive character of the roof and the building.

In the Queen's Jubilee year, we are asking for ideas for a legacy project for the Platinum celebrations. See our website for how to submit your suggestions.

The Parish Council is always pleased to hear from residents and starts each Full Council meeting, on the second Tuesday of each month, with a Public Forum in which residents' get up to five minutes each to raise issues of concern. Issues that need more time can then be added to the formal agenda for the meetings.

*Cllr Bob Barr,  
Chairman*



## Contact information:

Clerk to the Council: Kerry Duffin - 07741 877870  
clerk@lymmparishcouncil.gov.uk

Parish Council Website:

**www.lymmparishcouncil.gov.uk**

## Lymm Parish Council 2021-22



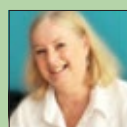
Name: Cllr Bob Barr OBE (Chairman)  
Address: 2A Danebank Road, Lymm WA13 9DH  
Telephone: 01925 750910  
Email: rbarr@lymmparishcouncil.gov.uk



Name: Cllr Graham Gowland (Deputy Chairman)  
Address: 32 Wychwood Avenue, Lymm, WA13 0NE  
Telephone: 01925 751599  
Email: ggowland@lymmparishcouncil.gov.uk



Name: Cllr Kath Buckley  
Address: 16 Hardy Road, Lymm WA13 0NX  
Telephone: 01925 752439  
Email: kbuckley@lymmparishcouncil.gov.uk



Name: Cllr Chris East  
Address: 7 Newfield Court, Lymm WA13 9QU  
Telephone: 07743 489329  
Email: ceast@lymmparishcouncil.gov.uk



Name: Cllr Ann Johnstone  
Address: 3 Lakeside Road, Lymm, WA13 0QE  
Telephone: 01925 755554  
Email: ajohnstone@lymmparishcouncil.gov.uk



Name: Cllr Selina Kirkham  
Address: 2 Hardy Road, Lymm WA13 0NX  
Telephone: 07971 109635  
Email: skirkham@lymmparishcouncil.gov.uk



Name: Cllr Ian Marks MBE  
Address: 80a Whitbarrow Road, Lymm WA13 9BA  
Telephone: 01925 753051  
Email: imarks@lymmparishcouncil.gov.uk



Name: Cllr Tim Martland  
Address:  
Telephone: 07759 078412  
Email: tmartland@lymmparishcouncil.gov.uk



Name: Cllr Ben Selwood  
Address: 44 The Crescent, Lymm WA13 0JY  
Telephone: 01925 752624  
Email: bselwood@lymmparishcouncil.gov.uk



Name: Cllr Sally Sharma  
Address: 5 Baycliffe, Lymm WA13 0QF  
Telephone: 07960 383148  
Email: ssharma@lymmparishcouncil.gov.uk



Name: Cllr Julia Stansfield  
Address: 46 Sandy Lane, Lymm WA13 9HQ  
Telephone: 01925 758809 / 07928 848256  
Email: jstansfield@lymmparishcouncil.gov.uk



Name: Cllr Stephen Towndrow  
Telephone: 01925 757560  
Email: stowndrow@lymmparishcouncil.gov.uk



**CLASSIFIED**

Call 01925 631592 to advertise

**ACCOUNTANCY & BOOKKEEPING**

**BOOKKEEPER/ACCOUNTANT.** Licensed for maintaining financial records, VAT Returns, Payroll Service, Management Accounts. SAGE Software Consultancy. **Contact: 07815 617914.** (5/1)

**CARPET CLEANING**

**A1 STAINBUSTERS.** A Warrington company cleaning carpets, hard floors, Upholstery (Leather + fabric) and curtains in situ. FREE quotes for domestic and commercial. Approved carpet cleaners for Hancock and Woods for over 10 years. **Call John on 07765 314080** (12/22)

**SIMPLY THE BEST CARPET CLEAN YOU** will ever have. Cleaners UK Ltd. Est over 30yrs. Have your carpets & sofas beautifully deep cleaned leaving them fresh smelling & colour restored. Latest & best methods. Dry/steam. Leather cleaning, oriental rugs specialist. Professional, reliable & affordable. **For more info call Neil Riley on 01925 264989 / 07831 336060 www.cleaners-uk.net** (14/22)

**CAR SALES**

**PARKVIEW CAR SALES**

**We buy and sell QUALITY CARS**  
Best price paid

Telephone Peter on **01925 575737 / 07957 545479**

23 Padgate Lane  
Padgate, Warrington  
Cheshire, WA1 3RS (5/1)

**CHILD CARE**

**OFSTED REGISTERED CHILDMINDER**  
Lives close to Ravenbank School. Full time or Part time placements available. Pick up and drop off from Ravenbank School or Rosebank Nursery. From ages 0-12 years. **For more information contact Carole on 07731 089656 or leave a message on 01925 755108** (14/22)

**CLEANING SERVICES**

**arleys angels**

- Spring Clean Specialists
- Presenting your home for sale
- Moving house
- After building work cleans

**01925 266834**  
because you're worth it! (5/1)

**CLEANING SERVICES**

**SIMPLY THE BEST CARPET CLEAN YOU** will ever have. Cleaners UK Ltd. Est over 30yrs. Have your carpets & sofas beautifully deep cleaned leaving them fresh smelling & colour restored. Latest & best methods. Dry/steam. Leather cleaning, oriental rugs specialist. Professional, reliable & affordable. **For more info call Neil Riley on 01925 264989 / 07831 336060 www.cleaners-uk.net** (14/22)

**ELECTRICAL CONTRACTOR**

**TRUST PROPERTY ELECTRICAL SERVICES.** NICEIC Part P Approved Contractor. All Electrical work undertaken. Inspection & Testing & PAT Testing. All work certified & guaranteed. **Call Tim on 07754409906 or 01925 601055** (12/21)

**GARDENING SERVICES**

• All aspects of tree surgery  
• Stump grinding  
• Waste removal  
• Locally based  
• Free quotation

**Beechwood Industries**  
www.beechwoodindustries.co.uk  
**01925 860544** (5/1)

**MORTGAGES**

**TALKING MORTGAGES - INDEPENDENT MORTGAGE ADVICE.**  
For local, impartial and professional advice on all aspects of mortgages contact Darren Simpson on **07708 975122** (16/21)

**PAINTING & DECORATING**

**BENJAMINS PAINTERS AND DECORATORS.** 20 years professional experience in commercial and domestic decorating, wallpapering, coving, interior and exterior work. **Telephone 07837 452514 or 01925 755198.** (14/21)

**BRUSH UP GIRLS.** Female Painter and Decorators covering Warrington and surrounding areas. Professional quality work assured. No job too small. Call today on **07554 486 626 or find us on Facebook** (15/4/22)

**PHOTOGRAPHY**

**FAMILY & PET PORTRAIT PHOTOGRAPHY**  
Lymm based Andrew Collier Photography specialises in family and pet portrait photography using Lymm locations as a backdrop. Personal service with beautifully made frames and albums. **Call Andrew on 01925 471091 or visit www.andrewcollierphotography.co.uk** (15/4/22)

**RE-UPHOLSTERY**

**Orchard Soft Furnishings**

RE-UPHOLSTERY  
CURTAINS • BLINDS

FREE MEASURING & FITTING  
TEL: (01925) 756388  
www.orchardsoftfurnishings.co.uk (11/20)

**TAXI / PRIVATE HIRE**

**Horn's**  
Airport Transfer & Taxi Specialists  
**CALL MARTYN: 01925 751761**  
**MOBILE: 07881 786250** (19/21)

**PAYROLL**

**WHY TRY TO BE A PAYE EXPERT?**  
Watkinson Black can provide a cost effective payroll service, releasing you to concentrate on your business. **For further details please phone: 01925 413210 or e-mail: info@warringtonaccountants.co.uk** (5/1)

**TYRES**

**EVERGREEN** Centre of Excellence

**Express**  
Mobile Tyres

Local Family Business. Est. 1997  
**01925 810000**  
www.expresstyres.co.uk  
Order Online Today!

Branded & Budget Tyres  
Cars, Vans, 4x4's, Caravans  
Light Commercial  
& Performance Vehicles

The tyre service that comes to you at home or your place of work

**No Call Out Charge!**

**BRIDGESTONE MICHELIN**  
**GOODYEAR Continental** (5/1)

Established 1878

**John Burrows & Sons**  
Fourth Generation Independent Family  
**Funeral Directors**

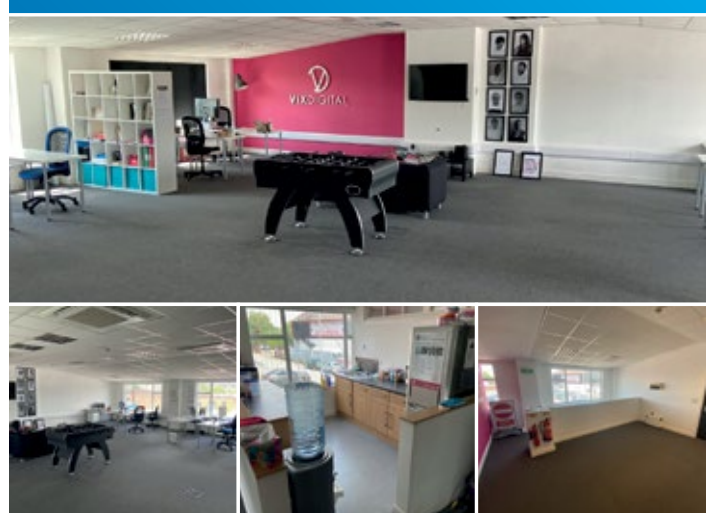
Friendly & Professional Service  
Day or Night ~ J. Tandy

The Old Smithy, Mill Lane, Lymm,  
WA13 9SE Tel: (01925) 752501

Golden Charter  
Funeral Plans

www.johnburrowsandsons.co.uk

**OFFICE/SPACE TO RENT**  
THE NEW MEDIA CENTRE, OLD ROAD, WARRINGTON, WA4 1AT



**APPROXIMATELY 1,500 SQ FEET**

- FULLY REFURBISHED
- OPEN PLAN OFFICE
- CLOSE TO TOWN CENTRE
- SEPARATE BOARDROOM
- AVAILABLE IMMEDIATELY
- RECEPTION AREA
- AIR CONDITIONED
- 24 HOUR ACCESS

**FOR MORE INFORMATION OR TO VIEW PLEASE CONTACT ALAN**  
**07710 241 865 or alan@247print.net**

**Obituary**

**Lawrence Jepson**



The funeral has taken place of Lawrence (Larry) Jepson, of Rushgreen Road, Lymm, who died suddenly in Warrington Hospital died, aged 77, on November 10.

Mr Jepson, who had lived in Lymm for 46 years, was well known in the village for his business, "Larry's Cars" and for his community work.

He was known for his kindness and care and enjoyed helping people wherever possible. Friends and family will miss him greatly.

He is survived by his wife, Jane, daughters Rachel and Rebecca and his five grandchildren.



The North West's leading supplier of concrete

[www.barrowmixconcrete.com](http://www.barrowmixconcrete.com)

# BARROW - MIX

1984-2019  
35TH YEAR  
ANNIVERSARY



**FREE SITE SURVEY**

**6 DAY SERVICE**

All areas covered

Free barrowing service

Only pay for what you lay

From half a cubic metre upwards

Levelling/laying service if required

(minimum charge)

We can supply

C25, C30, C35 Fibre Reinforced



VISA

MasterCard

Maestro

SOLO

Call NOW for a FREE quotation

**01565 734111 or 01942 722629**