

Lymm **Life** Magazine

ISSUE 269 | DECEMBER 2021
DELIVERED FREE TO 5000 HOMES



urban

BUILDING PROJECTS LTD

Extension &
Building Renovation
Specialists

Tel: 01925 730888

www.urbanbuildingprojects.co.uk

Heritage centre honours the fallen

Page 3



Burford Lane Vets
Your practice for life

Now
Open!



Register your pet for free



LYMM
PARISH
COUNCIL

Approved by Lymm Parish
Council as the official
magazine for Lymm

Horn's

Airport Transfer
& Taxi Specialists

CALL MARTYN:
01925 751761

MOBILE: 07881 786250

horns.cars@gmail.com

Regular news updates at www.lymm.life.co.uk

Editor's Comment



Editor
Gary Skentelbery

Production
James Bryan

Advertising
James Balme
Telephone
01925 631592

Editorial
01925 623633

Email
info@lymmlife.co.uk

Websites
www.lymmlife.co.uk
www.culchethlife.com
www.frodshamlife.co.uk
www.warrington-
worldwide.co.uk
www.warrington.tv

Address
New Media Centre
Old Road Warrington
WA4 1AT

*Lymm Life is published
monthly by Orbit News Ltd.*

*The contents of this magazine
are fully protected by copyright
and nothing may be reprinted
or reproduced without prior
permission of the publishers.*

*The publishers are not liable for
any statement made or opinion
expressed by third parties in this
publication.*

Printed by TwentyFourSeven

IT's certainly starting to feel a bit like Christmas – even though I am writing this in November – and what better present for Lymm residents than the new book of old colour photographs created by the two Alans, Alan Williams and Alan Taylor.

It never ceases to amaze me the amount of work going on at Lymm Heritage Centre in a village the size of Lymm.

Having covered the story of its creation from just being an idea to eventual reality, I always feel a sense of joy each time I write an

article or cover an event.

It is truly a great facility, run by hard working volunteers which we should all appreciate, as it is certainly a jewel in the crown of the village.

As a photographer myself I can't wait to see the new book "Historic Lymm in Colour" and I'm sure it will be on the wish list of a lot of local residents.

Congratulations to the two Alans on what I am sure is going to become a Christmas Blockbuster! Keep up the great work!

Meanwhile, please try and support local businesses when you do your Christmas shopping.

It has been a torturous 20 months for many small businesses, so please shop local and support your village traders.

Lymm care home shortlisted for two awards

LYMM-based care home Keate House has been shortlisted in the Caring UK Awards 2021, which recognise excellence and achievement within the care sector across the UK.

They are finalists in two categories – Regional Care Home of the Year – North and Excellence and Innovation in Dementia Care.

Care Home Manager Diane Clarkson said "We are very proud to be shortlisted for these categories as the awards are for the whole home, facilities and staff. We have a wonderful team at Keate House and it is great for this to be recognised."

The winners will be revealed at a glittering awards ceremony at The Athena in Leicester on 2nd December when the industry will gather to salute all that is great about the caring sector and recognise the amazing contribution it makes

particularly during the pandemic. An awards spokesperson said "Never has there been a more appropriate time to recognise the amazing and selfless contribution that our carers make and how they have given so much to protect and care for their residents in the face of unprecedented challenges".

Keate House is situated just a short walk from Lymm Village Centre and is set in its own beautiful well-established gardens. Keate House specialises in dementia care and has an enviable reputation for having a dedicated professional team that delivery high-quality personalised care in a safe, welcoming and secure environment. The ethos of the home is to foster an atmosphere of care and support which enables and encourages people to live a full, interesting and independent lifestyle as possible.

N & J STANHOPE

Coal and Log Supplies

Smokeless Fuel

Non-drop Christmas Trees

Open 6 Days. Closed Sunday

**Broomeedge Farm
Burford Lane, Lymm WA13 0SE**

**Tel: 752830
Mobile: 07979 785 421**

2021 Caring UK Awards shortlist
Best Regional Care Home, North
Excellence & Innovation in Dementia
NAPA 2021 Arts in Care –
Runners Up



**OPEN for
New Admissions**
Virtual & In-house tours
available

Award-winning dementia friendly Care Home

Exceptional care & facilities – including sensory garden & full activities programme



Dementia Care • Residential Care • Respite

www.keatehouse.com

Call: 01925 752091 Email: enquiries@keatehouse.com

9 Brookfield Road, Lymm, Cheshire WA13 0QL



NAPA Award Winners 2017, 2018
Plus 2020 – Best Activity Team



Remembering Lance Sgt. Henry "Harry" Brookes as heritage centre honours the fallen

EACH year Lymm Heritage Centre sets aside time to create and display a Remembrance window at their premises and this year highlights the personal tragedy of young villager Lance Sgt. Henry "Harry" Brookes.

As well as remembering all those who died the heritage centre, set up on the site of the former British Legion Club, also tells the story of one man to remind people that each of these deaths was a personal tragedy and a huge loss to family and friends.

Life began quietly enough for Henry "Harry" Brookes. Born in Lymm in 1890, like so many he took work after his schooling as a fustian cutter before moving from there to a job as a gardener at Lymm Hall. Harry joined the Territorials up at

Lymm Drill Hall a year before the outbreak of war.

After seven months training he was posted to France but even then could not imagine he would see action at the front. In 1915 he wrote to his young wife Kate.

"I can assure you that we are certain never to see any fighting... England will be on her last legs when she has to put her territorials to fight".

In fact, Harry was soon thrown into the thick of the action. His heroic deeds as an ambulance man drew praise in many letters home from his Lymm comrades and he was awarded the Russian Medal of Honour for his bravery.

Lance Sergeant Henry Brookes was killed in action on June 18th 1916.



DOGIE RUBBLES Professional Dog Grooming in High Legh pamper your pooch!

GROOMING RETREAT

- Bathing
- De-shed
- Styling
- Handstrip
- Brushing
- Clipping

07751 734276

Sophies Soft Furnishings

Curtains • Roman Blinds
Cushions • Tiebacks • Poles
Tracks • Valances • Pelmetts

We design, make and fit to meet your exact requirements.

For free home visit or advice ring **Anne on 01925 754446**

www.sophiessofffurnishings.co.uk

Lymm Osteopathic Practice
Established 1979

ONLINE BOOKING SYSTEM
www.lymmosteopathicpractice.co.uk

SUZETTE PULMAN N.D. M.R.N. D.O. Registered Naturopath & Osteopath

DARREN HAYWARD B.Sc. (Ost) Registered Osteopath

Registered with The General Osteopathic Council (G.O.Sc.)
01925 752264
The Rise, 16 Grammar School Road, Lymm WA13 0BQ

Bird & Bay DECORATIVE LIVING

Ask about our wreath making workshops

Christmas Shopping

Open 7 days a week and open til 8pm on Thursday

Snuggly winter throws, vibrant cushions, irresistible gifts, festive wreaths and lots of Christmas sparkle at Bird & Bay.

Come and discover our emporium of treasures.

5 THE CROSS, LYMM, WA13 0HR
WWW.BIRDANDBAY.CO.UK | 01925 754433

E.L.B. fireplaces

Call us on: **01942 607250**
www.elbfireplaces.co.uk
70 Twist Lane, Leigh, Lancashire WN7 4DP

Fire Surrounds, Stoves, Gas & Electric Fires

Established 30 YEARS

No need to change your carpet - made to measure fireplaces

Over 75 displays over 2 floors

Live wood burning stove on display

Is your conservatory too cold to use in Winter? Why not install a stove?

What's On in conjunction with Lymm Parish Council



LYMM PARISH COUNCIL
Tuesday December 14th, 7:30pm
Lymm Parish Hall
Check www.lymmparishcouncil.gov.uk for details.

LYMM THURSDAY EVENING BRIDGE CLUB
Lymm Village Hall every Thursday 7pm

MAPLE LODGE ART GROUP
Meet each Wednesday 9.00am - 11.30pm
Oughtrington Community Centre, Lymm
Details: 01925 755126

ROTARY CLUB OF LYMM
Meets at Statham Lodge on the 2nd and 4th Wednesday each month for a Fellowship and a Business meeting respectively.
Contact the Secretary 01925 758398

LOVING HEARTS & HANDS
Knitting for charity at Lymm Methodist Church, 2nd and 4th Thursday each month.
1.30pm - 3pm. Details: 01925 753298

MARKET LUNCHES
Eagle Brow Methodist Church
3rd Thursday in the month
Light lunches 12 noon till 2pm. All proceeds to Youth For Christ and YMCA Room at The Inn

GARDENING CLUB
Meet Third Wednesday of the month
Lymm Baptist Church, Higher Lane. 7.30pm
Visitors welcome. £2 includes tea and cake

LYMM FLORAL ART GROUP
Lymm Village Hall
Third Monday of the month (except August and December) at 7.30pm. Visitors most welcome. Contact: 07876 176501
lymmfloralart.org.uk

LYMM PHOTOGRAPHIC SOCIETY
Every 2nd and 4th Wednesday
(ex July & Aug), 7.30pm
Spread Eagle pub, Eagle Brow.
Details: www.lymmphotosoc.org.uk

LYMM WINE AND BEER CIRCLE
3rd Wednesday of the month, 8pm
The Spread Eagle Hotel
Details: 01925 756444

LYMM CONCERT BAND
Rehearsals every Thursday evening
United Reformed Church, 8pm.
Details: 01925 752934

LYMM WI
Every second Wednesday, 2-4pm at Lymm Youth and Community Centre. Visitors welcome.


LYMM BOOK CLUB
Second Thursday of the month 7.30pm,
Spread Eagle, Eagle Brow. Details 01925 752371

4LYMM VOLUNTARY ORGANISATION
Meet every 2nd Monday at 7.30pm in the Bridgewater Club, Whitbarrow Road.
All welcome. Tel 01925 756378 for details.

LYMM AND DISTRICT MIXED VOICE CHOIR
Every Wednesday 7.30 Lymm Methodist Church. Contact 01925 601664.
cafh@cstones.co.uk

PROBUS CLUB OF LYMM
A small, friendly social club for retired people.
Meets on second and fourth Tuesdays at 2:15pm.
Details: www.LymmProbus.club

LYMM DINGLE PROBUS CLUB
A friendly busy social club for retired men.
Meets on alternate Thursday afternoons at Lymm Baptist Church.
Details: www.lymmdingleprobus.club
Club secretary 01925 759995



LYMM PARISH COUNCIL

Tuesday December 14th, 7:30pm
See parish council website for details.

Lymm Festival returns for 2022

DESPITE the cancellation of planned live events over the past two summers, the Lymm Festival team were thrilled to re-schedule and run a couple of popular events recently when the High School and the Rugby Club played host to sell-out audiences for the first part of the 'Winter Warmers' series.

Well known personalities including Eddie the Eagle and Justin Moorhouse entertained at these hotly anticipated shows with audience members asking 'When's the next event?'

As a result more of these 'Winter Warmer' events will be unveiled over the coming months.

Many Lymm residents believe that there has never been a stronger community spirit as people sought to help and support friends and neighbours during the pandemic.

So, 'roll on Lymm Festival 2022' when the community can come together for the 'buzz' of live events.

Running from 23 June to 3 July, the programme will feature a great variety of festival and arts entertainment.

As is now customary, the Food Festival will kick off proceedings on Thursday, June 23 with a fantastic choice of street-style foods from around the world.

Festival organisers say they are very lucky to have some of the best caterers and food outlets right in the village.

For the latest information visit: www.lymmfestival.org.uk or follow on social media '@LymmFestival'





G P BROADSMITH & SON
POOL FARM, LYMM
Bottled on the Farm from our Free Range Cows

DELICIOUS MILK FROM OUR HAPPY COWS DELIVERED TO YOUR DOOR!




Here at Pool Farm we take good care of our free-range dairy cows. They produce fresh, quality milk which is bottled in our own farm dairy and delivered to local doorsteps. We also stock a range of associated products such as eggs and potatoes, all sourced from local farms.

Call 757655 or email milk@broadsmith.com to discuss early morning deliveries to your doorstep and follow us on Facebook or Instagram at @broadsmiths where you can keep up to date with life on the farm!



G P BROADSMITH & SON
POOL FARM, POOL LANE,
STATHAM, LYMM, WA13 9BW
TEL: 01925 757655
YOUR LOCAL DAIRY Est. 1932



Love your garden!


Rob Groom
Nursery Manager

Monthly gardening advice from Primrose Hill Nurseries

- Plant tulip bulbs now ready for Spring colour next year
- Protect tender perennials with a mulch of compost
- Give your tools a good clean before putting them away and have a sort out of your gardening equipment ready for next Spring
- You can still plant garlic, shallots and onions outdoors and get a head start on next year. It's a good idea to protect them from really harsh frosts with a covering of fleece



PRIMROSE HILL NURSERIES
EST. 1935

Warrington Road, High Legh, Knutsford, Cheshire WA16 0SQ
01925 752635

ANDY CARTER MP

WORKING HARD FOR **WARRINGTON SOUTH**

Here to Help

As your Member of Parliament I am here to help residents with any local or national concerns. I am absolutely committed to providing advice and support to all Warrington South residents. So if you need help, please don't hesitate to get in touch.

Andy

Contact Andy

- ☎ 01925 231 267
- ✉ andy.carter.org.uk
- ✉ andy.carter.mp@parliament.uk
- 📧 @MrAndy_Carter
- 📍 Andy Carter Warrington South

Warrington South Constituency Office
1 Stafford Road, Warrington WA4 6RP



Christmas at Primrose...



Join us for complimentary mulled wine, mince pies and selection boxes every weekend from 20th November 2021!



PRIMROSE HILL
NURSERIES

Est. 1935

Warrington Road, High Legh, Knutsford, Cheshire WA16 0SQ.
Mon-Sat 8.30am-5pm. Sun 10am-4pm.

Advertiser's announcement

Your local Urgent Treatment Centres

Here to help you stay well this winter

NHS Urgent Treatment Centres in Runcorn and Widnes are here to help you when you need urgent but not emergency treatment.

Both are open 8am to 9pm, seven days a week, 365 days a year (including bank holidays). Please arrive before 8pm to allow time to be seen before closing.

Urgent Treatment Centres (UTCs) provide x-rays and you can be seen here for a wide range of issues that require urgent treatment, but are not life-threatening, such as:

- Minor cuts and wounds
- Bites, stings, rashes and allergic reactions
- Minor burns and scalds
- Sprains, strains and joint pains
- Ear or eye injuries and infection

Where to find your Urgent Treatment Centres:

Runcorn Urgent Treatment Centre

Nightingale Building,
Hospital Way, Runcorn, WA7 2DA
Telephone: 01928 714567

Widnes Urgent Treatment Centre

Health Care Resource Centre,
Oaks Place, Caldwell Road
Widnes, WA8 7GD
Telephone: 0151 495 5000

If you travel by car, there is onsite parking (sat nav WA8 7GD)

There is also an Urgent Treatment Centre in St Helens at the Millennium Centre.

Anyone who has a cough, high temperature or any symptoms of COVID-19 should only attend Runcorn Urgent Treatment Centre when they can provide evidence of a recent negative PCR test. This requirement applies only to Runcorn UTC.

You can find current waiting times for Runcorn Urgent Treatment Centre, as well as Warrington Emergency Department at www.whh.nhs.uk

Not sure where to seek help or advice?

If you're worried about your health this winter, don't delay, your local NHS is there to make sure you get the care you need.

Winter conditions can be bad for our health, especially for people aged 65 or older, and people with long-term conditions.

If you need urgent medical advice

and are not sure which is the best place for you to seek help and advice, then please contact NHS 111 free at 111.nhs.uk or call 111. NHS 111 is available 24 hours a day, 7 days a week.

You will answer questions about your symptoms on the website, or by speaking with a fully trained advisor on the phone. Depending on the situation, you receive health information and advice and will find out what local service is right for you.

NHS 111 can also provide appointment slots for patients at local Urgent Treatment Centres, where appropriate.

If you're experiencing a 999

emergency, which means that it is critical or life-threatening, then phone 999 for emergency help.

Making the right choices helps us all. Please let's do it together this winter.



Warrington & Halton
Hospitals' Charity
Registered Charity: 1051858

NHS
Warrington and Halton
Teaching Hospitals
NHS Foundation Trust

Make a Child in Hospital Smile With A Gift This Xmas

FOR ALL
AGES
0-18

Christmas Toy Appeal

Please consider donating just one **new, unwrapped** toy to be given to one of our young patients this Christmas.

Drop-off Points:

Warrington Hospital Charity Community Hub Portakabin WA5 1QG
Halton Hospital Runcorn, General Office WA7 2DA
ASDA Cockhedge Main Entrance, Warrington WA1 2QA
Hillmount Cheshire 280 Knutsford Rd, Warrington WA4 1AZ

UP TO
£5
VALUE

For further information please contact the Fundraising Team
whh.charity@nhs.net 01925 662666 www.whhcharity.org.uk

LEADERS IN FAMILY LAW.

Delivering the results when it matters

Specialising in:

Divorce & Separation

Financial Settlements

Child Related Matters



Stockton Heath 01925 912 277

Hale 0161 926 1430

Manchester 0161 834 2623

caroline.swain@bpsfamilylaw.co.uk

www.bpsFamilyLaw.co.uk

Maskell + Josephson THE OPTOMETRISTS

Top Quality eye care at Maskell + Josephson

By Anthony Josephson



Maskell + Josephson (formerly Ross Maskell + Associates) has been in its current location on Regent Road in Altrincham since 1983, having moved from central Manchester at that time. In September 2020 we opened a new site in the new Warrington Market.

The ethos of both practices is the same as it's always been – offering top quality eye care and corrective options (glasses and contact lenses).

Long gone are the days where a person's glasses are simply a functional piece of kit. Whatever your need for glasses (driving, reading, computer work) we believe that glasses should look good and suit the individual's personality and requirements, as well as their prescription. We also know that sometimes there's no one perfect option for glasses and that a person's best results can be achieved with different pairs for different purposes. That's why after you've bought one pair we offer half-price on all of our additional sets of lenses.

We're not just a styling opticians. We offer some of the latest technology when it comes to looking to after your eyes meaning whether you're seen in Altrincham or Warrington you're guaranteed to have one of the most thorough eye examinations around.

We're proud to be one of the only private-only opticians in the country and the only ones in Altrincham and Warrington. Private eye care really isn't that expensive when compared to other costs of life. What's more important than one's ability to be able to read things, recognise people's faces, drive safely and see all the details of the world, that we all take for granted, for as long as we are able to see them?

We're also proud to be one of the only practices in the country to **offer huge benefits to those members on our monthly care plan**. The plan costs just over £6 per month and covers all your appointments and eye care (with an upgrade fee for contact lens wearers). **All of our glasses can be paid off in monthly, interest-free, installments too.**

Whether you're struggling with glare when driving at night, at risk of develop hereditary eye problems like glaucoma, fancy trying our over-night corrective contact lenses, or have very specific visual demands there's always a best option and we'll not settle until we get there.

For anyone who values their eyes and their eyesight we're here to look after you, help you see as well as you possibly can and make you look and feel good whilst doing so.

For more information please get in touch.



Maskell + Josephson, Altrincham
16 Regent Road, Altrincham, WA14 1RP
0161 941 6517

Maskell + Josephson, Warrington
Unit 20/21 Warrington Market, WA1 2NT
0161 549 2560

www.maskelloptometrists.com
anthony@maskelloptometrists.com

Rotary Club bringing cheer with ann

The Lymm Rotary Club Santa's float will again be out and about this year, starting at Abbey Leys on Sunday 5th December and following that the traditional routes around the streets of Thelwall and Lymm will begin on Monday 6th December and the final route will be on Tuesday 21st December.

This year Rotary will reverting to the pre-pandemic procedures and are allowed door to door collections. They will also be able to provide a Lymm Life and Lymm Rotary Facebook Post each night detailing the evening route and a tracker to show that Santa is nearby. The Santa Sleigh Tracker can be found at www.sleightracker.co.uk or via the Sleightracker app.

Mon 06 Dec: Woodlands Drive, Gateley Close, Pickering Crescent, Stanton Road, Moore Avenue, All Saints Drive, Parry Drive, Thelwall New Road, Prestworthy Drive, Handforth Close, Prestbury Drive, Alderley Road, Mobberley Close, Wilmslow Crescent, Stanton Road, Beech Avenue, Selworthy Drive, Wilson Close.

Tues 07 Dec: Thelwall New Road, Bradshaw Lane, Ollerton Close, Woodford Close & Ferryside, Buntingford Road, Pelham Road, Welwyn Close, Harlow Close, Walden Close, Barley Road, Dunmow Road, Watton Close, Baldock Close, Richmond Avenue, Ashley Close, Mottram Close.

Wed 08 Dec: Oaklands Dr,

Parkwood Close, Wayside Close, Elm Tree Road, Elm Tree Avenue, Cherry Lane (upper), Lady Acre Close, Huntsfield Close, Booths Lane, Highfield Road, Highfield Drive, Hilltop Road, Hardy Road.

Thu 09 Dec: Cherry Lane (lower), Cherry Tree Avenue, Old Smithy Lane, Wychwood Av, Heyes Dr, Egerton Road, Lyme Grove, Hardy Road, Massey Brook Lane, Massey Brook Avenue, Beech Grove, Princess Road John Road, David Road, Thornley Road, Booths Hill Road, Barsbank Lane, Barsbank Close, Daisy Bank Road, Oak Road, Hawthorn Road, Ridgeway Gardens, Grove Avenue, Newfield Road, The Anchorage.

Fri 10 Dec: Stage Lane, The Paddock, Crown Green, Whitebroom, Oughtrington Crescent, Sandy Lane, Hopfield Road, Ashcroft Road, Woodbine Road, Bridge Meadow, Birchfield Road, Cedarfield Road, Ashfield Close, Rushgreen Road (from Sandy Lane to Howard Avenue), Howard Avenue, Heatley Close, Lodge Close, Oughtrington View, Church View, Moss Grove,

Christmas at Lymm Heritage Centre

LIKE many, Lymm Heritage Centre is looking forward to something that feels a lot more like Christmas this year.

To celebrate they will be releasing their biggest and best book ever on November 18th. "Historic Lymm in Colour" brings the past alive with almost 300 pictures over 200 pages from the past, all revived in full colour many of which have never been seen before.

Along with new mini-jigsaws, a beautiful, newly designed Lymm tea towel, as well as affordable Lymm Xmas, cards the Centre has plenty of ideas on offer.

The Centre has also got together with local business, Papertown

to provide an after school craft club session on December 15th where children can make Victorian Christmas decorations.

Find out more about all the above at www.lymmhlc.co.uk



CG CLEVER GATES FULLY AUTOMATED DRIVEWAY GATES
SLIDING, SWING AND CANTILEVER GATES



Tel: 0330 133 4482 | www.clevergates.co.uk

ng some Christmas ual Santa float

Richmond Drive, Richmond Close.

Mon 13 Dec: Ruses Meadow, Chaise Meadow, Farcroft Road, Millington Gardens, Longcroft Place, School Drive, Reddish Lane, Springfield Ave, Moore Grove, Springbank Gardens, Rushgreen Road., Elderfield Gardens, Adey Road, Green View.

Tue 14 Dec: Bucklow Gardens, Rushgreen Road, The Greenacres, Dyers Lane, Rush Gardens, Mardale Crescent, Langdale Avenue, Thirlmere Drive, Dairy Farm Close, Grasmere Road, Reddish Crescent, Linden Close, Bollin Drive, Bollin Close, St Peter's Close, Warburton Close, Whitefield Grove, Whitefield Close.

Wed 15 Dec: Statham Avenue, Statham Close, Statham Drive, Lymington Avenue, Star Lane, Turnbury Close, Poole Lane, Brookside Ave, Oldfield Road, Whitbarrow Road.

Thu 16 Dec: Albany Road, Albany Grove, Albany Road, Albany Crescent, Sycamore, Northway, Whitesands Road, The Farthings, West Heath Grove, Jubilee Grove.

Fri 17 Dec: Crouchley Lane, Manor Road, The Crescent, Greenwood Road, Mayfield View, The Hatchings, Grammar School Road, Scholars Green, Limefield Avenue, Churchwood View, Higher Lane.

Mon 20 Dec: Woodlands Avenue, Woodlands Drive, Longbutt Lane, Newarth Drive, White Clover Square, Clanbrook Avenue, Welcroft Gardens, Marfield Avenue, Oughttrington Lane, Foxley Close, Higher Lane, Bellfield Close, High Legh Road, Park Road, Agden Park Lane, Burford Lane, The Drive, Chapel Walks.

Tue 21 Dec: Danebank Road East, Lymm Hay Lane, Yew Tree Close, Brooklyn Drive, Willow Close, Dane Bank Road, Millbank, The Cross, Pepper St, Domville Close, Grove Rise, Rose Bank, Hartley Close, Quayside Mews, Crossfield Avenue, Fairfield Road, Orchard Avenue, Racefield Close, Cyril Bell Close, Pepper Street, The Peppers, Rectory Lane, Rectory Gardens, New Road.



Professional tree services

Free Quote

- Domestic
- Commercial
- Site Clearance

- Vegetation management
- Stump grinding
- Re-planting
- £10m public liability insurance



Beechwood Industries
www.beechwoodindustries.co.uk

For more information, please call us on
01925 860544











Commercial • Commercial Property • Litigation
Employment • Wills • Trusts • Probate
Personal Injury • Conveyancing • Crime • Family & Divorce

01925 231000
info@fdrlaw.co.uk

Serving Warrington and surrounding areas

www.fdrlaw.co.uk







LYMM PARISH COUNCIL NEWSLETTER

Lymm Parish Council has had a very busy few months.

Exhibitions were held in the Village Hall to help residents understand Warrington's Draft Local Plan and to help them respond to the consultation. A final submission version of the Plan should be completed for submission to the Planning Inspectorate for Examination in Public. Provided the Plan passes that examination, the Borough Council hopes that it will be adopted in 2023, a deadline set by the government. That will leave the way open for Lymm to complete its own Neighbourhood Plan, which must comply with the Local Plan but can add detail of what is appropriate for the village and what local residents want.

Remembrance events, organised by the Parish Council and led, for the first time by our Air Cadets, mark the transfer of the ceremonies to a new generation. This is appropriate as the Royal British Legion has reached its hundredth anniversary but has had to withdraw from organising Remembrance parades.

Covid uncertainty continues to make planning events around Christmas difficult. The Village Hall is being booked more, but those booking are responsible for ensuring that their events are Covid-safe.

Plans are being made for Dickensian and Carols around the Cross, but whether these will occur as face to face public events will depend on the state of Covid infections and government guidelines.

A Parish Council priority this year is to deal with traffic, speeding and road safety issues. Two initiatives are being considered to monitor traffic levels in Lymm and to help control speeding on some of the major through routes. The mobile speed signs which the PCSOs help the Parish Council deploy around the village, measure speeds but do not record number plates. They show that a significant proportion of drivers still speed through the village. There also appears to be an increase in the number of HGVs breaking the 7 ton limit and passing through the village. We continue to press the Police to take action to reduce this problem.

We all hope for a more normal Christmas this year where the community can come together for more of the traditional events. The Parish Council wishes all residents a very Merry Christmas.

Last but not least, we welcome our new Environment Warden, Mark Beddingfield, to the team. Mark will support the Environment Team keeping Lymm a pleasant place to live and work. And have you spotted the 3 new bins in Spud Wood? They are the result of residents' requests and partnership working with The Woodland Trust.



*Cllr Bob Barr
Chairman*



Contact information:

Clerk to the Council: Kerry Duffin - 07741 877870
clerk@lymmparishcouncil.gov.uk

Parish Council Website:

www.lymmparishcouncil.gov.uk

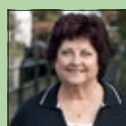
Lymm Parish Council 2021-22



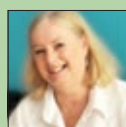
Name: Cllr Bob Barr OBE (Chairman)
Address: 2A Danebank Road, Lymm WA13 9DH
Telephone: 01925 750910
Email: rbarr@lymmparishcouncil.gov.uk



Name: Cllr Graham Gowland (Deputy Chairman)
Address: 32 Wychwood Avenue, Lymm, WA13 0NE
Telephone: 01925 751599
Email: ggowland@lymmparishcouncil.gov.uk



Name: Cllr Kath Buckley
Address: 16 Hardy Road, Lymm WA13 0NX
Telephone: 01925 752439
Email: kbuckley@lymmparishcouncil.gov.uk



Name: Cllr Chris East
Address: 7 Newfield Court, Lymm WA13 9QU
Telephone: 07743 489329
Email: ceast@lymmparishcouncil.gov.uk



Name: Cllr Ann Johnstone
Address: 3 Lakeside Road, Lymm, WA13 0QE
Telephone: 01925 755554
Email: ajohnstone@lymmparishcouncil.gov.uk



Name: Cllr Selina Kirkham
Address: 2 Hardy Road, Lymm WA13 0NX
Telephone: 07971 109635
Email: skirkham@lymmparishcouncil.gov.uk



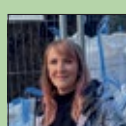
Name: Cllr Ian Marks MBE
Address: 80a Whitbarrow Road, Lymm WA13 9BA
Telephone: 01925 753051
Email: imarks@lymmparishcouncil.gov.uk



Name: Cllr Tim Martland
Address:
Telephone: 07759 078412
Email: tmartland@lymmparishcouncil.gov.uk



Name: Cllr Ben Selwood
Address: 44 The Crescent, Lymm WA13 0JY
Telephone: 01925 752624
Email: bselwood@lymmparishcouncil.gov.uk



Name: Cllr Sally Sharma
Address: 5 Baycliffe, Lymm WA13 0QF
Telephone: 07960 383148
Email: ssharma@lymmparishcouncil.gov.uk



Name: Cllr Julia Stansfield
Address: 46 Sandy Lane, Lymm WA13 9HQ
Telephone: 01925 758809 / 07928 848256
Email: jstansfield@lymmparishcouncil.gov.uk



Name: Cllr Stephen Towndrow
Telephone: 01925 757560
Email: stowndrow@lymmparishcouncil.gov.uk

New veterinary practice creates nine new jobs following £500,000 investment

NINE new jobs have been created following a £500,000 investment in a brand new state-of-the-art veterinary practice in Lymm.

A team of veterinary professionals with more than 6 decades of combined industry experience will run Burford Lane Vets at the former Pets Animal Hotel kennels, including Dr Sean Cleary, who is well known throughout the Northwest for his vast breadth of experience and knowledge in small animal care.

Dr Cleary is joined by Dr Pieter De Villiers, and two head veterinary nurses, Ashlee Crook and Gemma

Scott, who have all been working in Lymm for many years.

Dr Cleary said: "I'm originally from New Zealand and started my UK veterinary career in Warrington and have worked throughout Cheshire for the last 20 years. I'm delighted to be opening my own practice in Lymm, alongside Pieter, who is a highly respected local vet. Our team lives locally and believes strongly in providing a caring and accessible service for our local

community of pet lovers. Locally owned and locally managed, we are a traditional veterinary practice that embraces technology and puts pets at the heart of what we do."

Burford Lane Vets benefits from significant investment in the latest technology and veterinary equipment and has three consulting rooms, a state-of-the-art lab, high-tech orthopedic equipment, online booking, and soothing music to minimise stress in the separate cat and dog wards.

Dr Villiers added: "As a new start-up, we are able to register pets right away and provide high-quality veterinary care in a timely manner. According to the Pet Food Manufacturers Association, a total of 3.2 million households have acquired a pet since the start of the pandemic and this has led to increased pressure on existing practices, meaning many are unable to see people quickly or take on new clients."



Left to right is Hannah Downie – Registered Veterinary Nurse & Receptionist, Ashlee Crook – Head Veterinary Nurse, Dr Pieter De Villiers – Director & Veterinary Surgeon, Jane Platt – Finance & People Director, Dr Richard Thomas – Property Director & Veterinary Surgeon, Dr Sean Cleary – Clinical Director & Veterinary Surgeon, Gemma Scott – Head Veterinary Nurse, Maxine Hackett – Receptionist, Georgie Richards – Receptionist.

Bears Paw

Country Inn & Restaurant

Planning your Christmas festivities?
We are now taking bookings for our Christmas Fayre Menu
which runs from December 1st - 24th
2 Courses £19.95 | 3 Courses £23.95
We recommend to book early

Have you visited our Courtyard at the Bears Paw?
Covered and heated outside dining. Great for all occasions.
This space can be booked for private functions.
Just give us a call for a quote and menu ideas.

Sunday restaurant hours now 12pm till 7pm.
Three Course Menu £16.95 Or two £14.50

Tel: 01925 752573 Warrington Road, High Legh, WA16 0RT

@PawBears
 Bears Paw Country Inn & Restaurant



E SMITH AND SON

PLANT CENTRE

[WWW.LYMMPLANTS.CO.UK](http://www.lymmplants.co.uk)

Over 60 years in Lymm and still growing!

THE NURSERY, BOOTHS LANE, LYMM, WA13 0PF
01925 752459

DEREK, SARAH AND KLAUDIA
wish you all
A VERY MERRY CHRISTMAS!

OPEN FOR CHRISTMAS WREATHS, POTTED TREES
PLANTED TUBS AND CONTAINERS
WREATH MAKING COURSES

OPEN 7 DAYS: MONDAY TO SATURDAY 10AM - 4PM | SUNDAY 11AM - 3PM
SEE WEBSITE FOR CHRISTMAS OPENING TIMES

EXCHANGE YOUR GOLD AND SILVER FOR INSTANT CASH



All items of jewellery accepted

Did you know...?

We accept silver jewellery, cutlery, tea sets, spoons, cigarette cases, candlesticks, trophies, trays, medals, coins and pocket watches.

**ROLEX WATCHES WANTED!
ANY CONDITION**

Open: Tuesday-Saturday: 10am - 5.30pm

1 London Road, Stockton Heath
(First floor entrance on Fairfield Road)

07544 486 621



**GOLD & SILVER
BULLION DEALER**

Medieval Souling Play returns to Lymm

HEADS were turning in Lymm at the sight of an eccentric group that included, among others, St George, a Turk, a mad doctor, Beelzebub and a groom leading a three-legged horse.

It was of course the Warburton Soulers going from venue to venue to perform the traditional souling play.

Typically they arrive unannounced in the village pubs for their 15 minute show but this year, for the first time, they added Lymm Heritage centre to their itinerary.

"It has been so good to get back out there after last year's enforced break," explained the soulers' master of ceremonies Laurence Armstrong. "We did particularly

want to include the Heritage Centre as they have done so much to raise awareness of what is, after all, Lymm's oldest tradition by far. The play only survives in Cheshire these days though its origins and can be traced back to medieval times".

Lymm Heritage Centre hopes to make the visit an annual affair.

You can find more about this fascinating tradition at Lymm Heritage Centre or on the website at www.lymmhc.co.uk/soulcaking



Need IT Support at Home?

- Skilled and Friendly Technicians
- PC and Laptop Support
- Home Visit or Remote Dial-in
- Antivirus/Malware Check
- Unlimited Support Time



Ask for Ethan, Josh or Mark



Call our Team: 01925 251143

sales@aspire-computers.com | www.aspire-computers.com

Only £895 for a fully fitted electric door.

Gotta get a Garolla.

NOW ONLY

£895 WAS £1394 INC VAT

WHAT'S INCLUDED:

- FREE MEASURING & FITTING
- TWO REMOTE CONTROLS
- ACOUSTIC & THERMAL INSULATION
- AVAILABLE IN 21 COLOURS
- DISPOSAL OF YOUR OLD DOOR

Offer valid for openings up to 2.6m wide & inc: 2 remote controls, 55mm white slats, internal manual override.



GOTTA GET A GAROLLA

CALL US TODAY

01925 205 008

MOBILE

07537 149 128

www.garolla.co.uk

Garolla garage doors are strong and solidly built. They're made to measure in our own UK factories. The electric Garolla door rolls up vertically taking up only 8 inches inside your garage. Our expert installers will fit your new door and take away the old one so there's no mess.

Give us a call today and we'll come and measure up completely Free.

YOUR LOCAL DRAINAGE EXPERTS

Nationally known, locally owned!



DRAIN CLEANING & UNBLOCKING



DRAIN CCTV SURVEY



DRAIN REPAIRS

Whatever the problem we are available 24/7!

01942 644213

www.dalrod.co.uk

DALROD

Discover what's on offer at your local college!

With the new year around the corner, you may find yourself pondering about 2022, your career and what that might look like.

Perhaps you are aiming for a promotion, but need to improve your management skills? Perhaps you are considering university, a change of direction and would like to study something new to help move towards that change? Or perhaps you would just like to learn a new skill?

Whatever your motivation, take some time to discover what's on offer this winter at Warrington & Vale Royal College.

We have courses across a variety of subject areas including:

- Accounting
- Business & Administration
- Cookery
- Creative Arts
- Counselling
- Digital & IT
- Education & Childcare
- First Aid
- Floristry
- Hair & Beauty
- Health & Social Care
- Human Resources
- Languages
- Leadership & Management
- Marketing
- + Many more...

We also offer a number of FREE* distance learning courses which can be studied independently and at your own pace at home or within the workplace.

*Terms & conditions apply

With unprecedented demand for many of our courses this September, be sure to enquire early as places fill up fast!

wvr.ac.uk/adults

01925 494 400



**Warrington
& Vale Royal
College**



Your health & well-being is our priority.

Warrington & Vale Royal College continues to follow Government guidelines in ensuring the availability of hand sanitisers across college, regular cleaning of classrooms and the wider college, as well as close monitoring of the ventilation systems. Face coverings are optional.

Former Lymm Colt Alex Mitchell makes try scoring-debut for England

FORMER Lymm Rugby Club youngsters Alex Mitchell made a try-scoring debut for England during their victory over Tonga at Twickenham recently – much to the delight of well-wishers from his former club.

Mitchell, the former Lymm Colt and current Northampton Saints scrum half, was selected in the squad alongside veteran Ben Youngs.

He came on with 16 minutes to go thereby winning his first full cap for England and even scored a debut try in the final minute of the game.

Lymm Rugby Club spokesperson

Simon Plumb said: "This was a wonderful moment for him, his family and Lymm Rugby Club!"

Alex played for Lymm Minis and Juniors from the age of five, up to the age of eighteen and is the second player in Lymm, after Dave Strettle, to be fully capped by England.

"Let's hope it is the first of many," added Simon.



Time capsule buried at site of new childcare nursery

WORK is progressing well at the former Lymm Hotel site on Whitbarrow Road in Lymm, where leading day nursery Back to the Garden Childcare has officially broken ground, burying a time capsule to mark the occasion.

Founders Stewart and Jeannie Pickering were joined by parent and child Katy-Mae and two-year-old Miller and expectant nursery administrator Gina Greef from Back to the Garden's first site in Altrincham, to mark the start of construction.

Reinforcing the connection between the two locations and leaving a lasting legacy to be discovered by children in years to come, the McGoff Construction site team buried a stainless steel time capsule filled with photos, drawings and crafts from the pre-schoolers in Broadheath.

With its innovative outdoor classroom, forest schools-based curriculum and all-seasons learning and exploration space, Back to the Garden is an expertly designed, purpose-built day care setting that focuses on organic, child-led learning through outdoor play and has enjoyed considerable success since the opening of its first site three years ago.

Setting new standards in post-Covid childcare, the nursery is embarking on a period of expansion, taking its conscious approach to new locations across the North West and beyond.

Founder Jeannie said: "We are

delighted to officially break ground on our second setting and excited to bring the Back to the Garden concept to Lymm. We aim to deliver the very best in childcare, based on a natural approach where children spend as much time as possible outside learning actively through outdoor play in the fresh air and developing at their own pace.

"It's wonderful to have Miller, one of the very first children to join us at Broadheath, and his mum here with us and also Lymm local Gina who will be transferring to the new nursery when she returns from maternity leave next year."

The plans for the new Back to the Garden nursery in Lymm are superb; offering a safe and stimulating environment both inside and out, the nursery will allow children to explore, learn and discover in a beautifully landscaped garden complete with dedicated forest schools space.

Designed and delivered by the McGoff Group, it is part of a wider development that also includes a state-of-the-art care centre and 45 luxury apartments in a leafy conservation area setting next to the Trans Pennine Trail. A new concept in multi-generation living, the £28.25 million development will bring young and those in later

life together to form a thriving new hyperlocal community with proven health, social and wellbeing benefits for all.

With construction now underway, work will continue at pace with an estimated completion date of

October 2022.

The team at Back to the Garden is already noting interest in the new nursery from local parents and carers. For further information visit www.backtothegardenchildcare.com



Obituaries

Sheila Worrall

THE funeral has taken place of Sheila Worrall, of Whitesands Road, Statham, who died peacefully aged 83 on October 10 at Cheshire Grange Care Home.

Sheila, who lived in Lymm over 70 years, is survived by husband Harry and their three daughters Sue, Jane and Karen.

The funeral took place at Dunham Crematorium on October 21.

Sheila moved into Cheshire Grange in August 2020 and her family would like to acknowledge all the staff for their excellent care of their wife and mum. She was cared for with great compassion and respect.

Funeral arrangements were by John Burrows and Sons of Lymm.

Margaret Sharp

THE funeral has taken place of Margaret Sharp, of Cedarfield Road, Lymm, who died, aged 82, on October 12.

Margaret died peacefully after a long battle with pulmonary fibrosis at St Rocco's Hospice.

She had been actively involved in many different groups in Lymm over the last 50 years and will be greatly missed by her children, Andrew, Fiona, Jule and Diana and her 11 grandchildren.

Funeral arrangements were by John Burrows and Sons of Lymm.

Established 1878
John Burrows & Sons
 Fourth Generation Independent Family
Funeral Directors
 Friendly & Professional Service
 Day or Night ~ J. Tandy
 The Old Smithy, Mill Lane, Lymm.
 WA13 9SE Tel: (01925) 752501
 Golden Charter
 Funeral Plans
www.johnburrowsandsons.co.uk

CLASSIFIED

Call 01925 631592 to advertise

ACCOUNTANCY & BOOKKEEPING

BOOKKEEPER/ACCOUNTANT. Licensed for maintaining financial records, VAT Returns, Payroll Service, Management Accounts, SAGE Software Consultancy. **Contact: 07815 617914.** (S1)

CARPET CLEANING

A1 STAINBUSTERS. A Warrington company cleaning carpets, hard floors, Upholstery (Leather + fabric) and curtains in situ. FREE quotes for domestic and commercial. Approved carpet cleaners for Hancock and Woods for over 10 years. **Call John on 07765 314080** (J2/22)

SIMPLY THE BEST CARPET CLEAN YOU will ever have. Cleaners UK Ltd. Est over 30yrs. Have your carpets & sofas beautifully deep cleaned leaving them fresh smelling & colour restored. Latest & best methods. Dry/steam. Leather cleaning, oriental rug specialist. Professional, reliable & affordable. **For more info call Neil Riley on 01925 264989 / 07831 336060 www.cleaners-uk.net** (J4/22)

CAR SALES



We buy and sell QUALITY CARS
Best price paid
 Telephone Peter on **01925 575737 / 07957 545479**
 23 Padgate Lane
 Padgate, Warrington
 Cheshire, WA1 3RS (S1)

CLEANING SERVICES

SIMPLY THE BEST CARPET CLEAN YOU will ever have. Cleaners UK Ltd. Est over 30yrs. Have your carpets & sofas beautifully deep cleaned leaving them fresh smelling & colour restored. Latest & best methods. Dry/steam. Leather cleaning, oriental rugs specialist. Professional, reliable & affordable. **For more info call Neil Riley on 01925 264989 / 07831 336060 www.cleaners-uk.net** (J4/22)

ELECTRICAL CONTRACTOR

TRUST PROPERTY ELECTRICAL SERVICES. NICEIC Part P Approved Contractor. All Electrical work undertaken. Inspection & Testing & PAT Testing. All work certified & guaranteed. **Call Tim on 07754409906 or 01925 601055** (S12/21)

GARDENING SERVICES



- All aspects of tree surgery
- Stump grinding
- Waste removal
- Locally based
- Free quotation

Beechwood Industries
 www.beechwoodindustries.co.uk
01925 860544 (S1)

PHOTOGRAPHY

FAMILY & PET PORTRAIT PHOTOGRAPHY Lymm based Andrew Collier Photography specialises in family and pet portrait photography using Lymm locations as a backdrop. Personal service with beautifully made frames and albums. **Call Andrew on 01925 471091 or visit www.andrewcollierphotography.co.uk** (S4/22)

RE-UPHOLSTERY



RE-UPHOLSTERY
 CURTAINS • BLINDS
 FREE MEASURING & FITTING
 TEL:(01925) 756388
 www.orchardsoftfurnishings.co.uk (J11/20)

TYRES



Express Mobile Tyres
 Local Family Business. Est 1997
01925 810000
 www.expresstyres.co.uk
Order Online Today!
Branded & Budget Tyres
 Cars, Vans, 4x4's, Caravans
 Light Commercial & Performance Vehicles
The tyre service that comes to you at home or your place of work
No Call Out Charge!


TAXI / PRIVATE HIRE



Horn's
 Airport Transfer & Taxi Specialists
CALL MARTYN: 01925 751761
MOBILE: 07881 786250 (S9/21)

PAYROLL

WHY TRY TO BE A PAYE EXPERT? Walkinson Black can provide a cost effective payroll service, releasing you to concentrate on your business. **For further details please phone: 01925 413210 or e-mail: info@warringtonaccountants.co.uk** (S1)

To advertise in the classified section from as little as £15+vAT
Call us now on 01925 631592

CHILDCARE

OFSTED REGISTERED CHILDMINDER Lives close to Ravenbank School. Full time or Part time placements available. Pick up and drop off from Ravenbank School or Rosebank Nursery. From ages 0-12 years. **For more information contact Carole on 07731 089656 or leave a message on 01925 755108** (J4/22)

CLEANING SERVICES



- Spring Clean Specialists
- Presenting your home for sale
- Moving house
- After building work cleans

01925 266834
... because you're worth it! (S1)

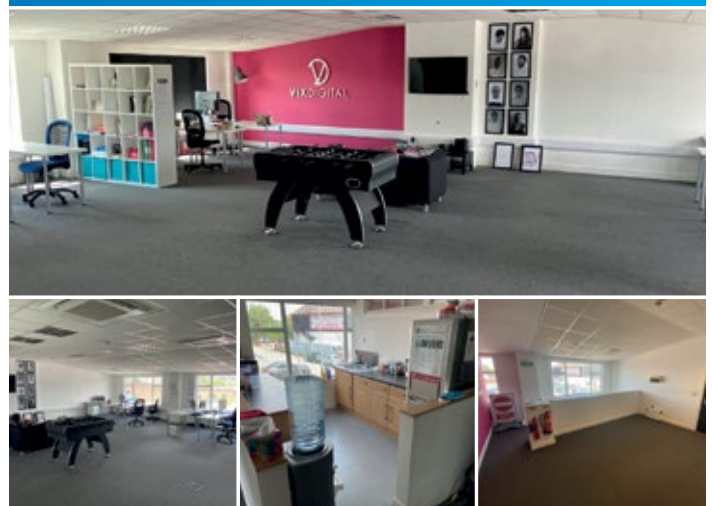
MORTGAGES

TALKING MORTGAGES - INDEPENDENT MORTGAGE ADVICE. For local, impartial and professional advice on all aspects of mortgages contact Darren Simpson on **07708 975122** (S8/21)

PAINTING & DECORATING

BENJAMINS PAINTERS AND DECORATORS. 20 years professional experience in commercial and domestic decorating, wallpapering, coving, interior and exterior work. **Telephone 07837 452514 or 01925 755198.** (J4/21)
BRUSH UP GIRLS. Female Painter and Decorators covering Warrington and surrounding areas Professional quality work assured No job too small Call today on **07554 486 626 or find us on Facebook** (S4/22)

OFFICE/SPACE TO RENT
 THE NEW MEDIA CENTRE, OLD ROAD, WARRINGTON, WA4 1AT



APPROXIMATELY 1,500 SQ FEET

- FULLY REFURBISHED
- OPEN PLAN OFFICE
- CLOSE TO TOWN CENTRE
- SEPARATE BOARDROOM
- AVAILABLE IMMEDIATELY
- RECEPTION AREA
- AIR CONDITIONED
- 24 HOUR ACCESS

FOR MORE INFORMATION OR TO VIEW PLEASE CONTACT ALAN
07710 241 865 or alan@247print.net

Obituary Notices

While Obituary notices are published free of charge, due to pressures on space, we can never guarantee they will be used and there can also be a delay of several months.

If you would like to guarantee a notice to appear in the next available issue, these can be purchased for £75 plus VAT which helps towards the running costs of your free community magazine.

To place an obituary notice or any other public/family notice please email info@lymmlife.co.uk

Your notice will appear the same size as this advertisement.

The North West's leading supplier of concrete

www.barrowmixconcrete.com

BARROW - MIX

1984-2019
35TH YEAR
ANNIVERSARY



FREE SITE SURVEY

6 DAY SERVICE

All areas covered

Free barrowing service

Only pay for what you lay

From half a cubic metre upwards

Levelling/laying service if required

(minimum charge)

We can supply

C25, C30, C35 Fibre Reinforced



VISA

MasterCard

Maestro

SOLO

Call NOW for a FREE quotation

01565 734111 or 01942 722629