

Lymm Life

Magazine

ISSUE 267 | OCTOBER 2021
DELIVERED FREE TO 5000 HOMES



urban

BUILDING PROJECTS LTD

Extension &
Building Renovation
Specialists

Tel: 01925 730888

www.urbanbuildingprojects.co.uk



Picture: Andrew Collier

Ms Great Britain Classic!

Page 3



LYMM
PARISH
COUNCIL

Approved by Lymm Parish
Council as the official
magazine for Lymm

Horn's

Airport Transfer
& Taxi Specialists

CALL MARTYN:
01925 751761

MOBILE: 07881 786250

horn.cars@gmail.com

Regular news updates at www.lymm.life.co.uk

Editor's Comment



Editor
Gary Skentelbery

Production
James Bryan

Advertising
James Balme
Telephone
01925 631592

Editorial
01925 623633

Email
info@lymmlife.co.uk

Websites
www.lymmlife.co.uk
www.culchethlife.com
www.frodshamlife.co.uk
www.warrington-worldwide.co.uk
www.warrington.tv

Address
New Media Centre
Old Road Warrington
WA4 1AT

Lymm Life is published monthly by Orbit News Ltd. The contents of this magazine are fully protected by copyright and nothing may be reprinted or reproduced without prior permission of the publishers. The publishers are not liable for any statement made or opinion expressed by third parties in this publication. Printed by TwentyFourSeven

CONGRATULATIONS to all those who successfully campaigned for reduced speed limits in the Burford Lane and Higher Lane area of the village.

Due to complaints of excessive speeds in the area local police worked with local residents, Warrington Borough Council and Lymm Parish Council to look for ways to improve road safety conditions for residents and road users.

As a result speed limits are being reduced from 40mph to 30mph, while further along the road Mill Lane has been changed from 50mph to 40mph.

Unfortunately, there has been a delay in new signage, so it could be a few weeks before the speed limits are enforced.

I'm unsure of the reason for the delay in new signage being delivered and installed but it would appear we are going to have to get used to delays and shortages of supplies in the coming weeks and months due to a shortage of drivers in particular caused by the double whammy of the COVID-19 pandemic and Brexit.

HGV drivers, in particular, are like hen's teeth at the moment, while a shortage of drivers is also impacting local bus services.

Meanwhile, life is gradually returning to some kind of normality, although the ongoing pandemic is still going to impact on our lives for some time to come, with rates still relatively high in the

local area. Thankfully deaths and hospital admissions remain low, highlighting the importance of the vaccination programme.

As you read this the Lymm May Queen Festival will be about to take place or recently happened, following on from Thelwall Rose Queen.

It is great to see these important community events taking place as they provide an opportunity for local community groups to raise awareness and raise funds.

Plans are also underway to hold Lymm Dickensian Festival on Saturday December 11 subject to the Covid situation. More details next month.

Meanwhile, as we approach the Christmas season don't forget to support local traders as much as possible as many will have been through a lean time - if you can, Shop Local.

Book your Christmas advertising now!
Only two more issues before Christmas

Sophies Soft Furnishings

- Curtains • Roman Blinds
- Cushions • Tiebacks • Poles
- Tracks • Valances • Pelmets

We design, make and fit to meet your exact requirements.

For free home visit or advice ring **Anne on 01925 754446**

www.sophiessofffurnishings.co.uk

N & J STANHOPE

Coal and Log Supplies

Best Quality Coal
Smokeless Fuel
Logs Supplied in Bags and Bulk

Caravan Storage
Open 6 Days. Closed Sunday

Broomedge Farm
Burford Lane, Lymm WA13 0SE

Tel: 752830
Mobile: 07979 785 421

Worried about the long term effects of lockdown, looking for support? Come and join our community



OPEN for new Admissions - Virtual tours available

Now Available – Brand New dementia friendly en-suite garden view rooms, Plus recent extensive refurbishment to our day lounge, garden and the 'Keate Arms'



Dementia Care • Residential Care • Respite • Day Care

www.keatehouse.com

Call: 01925 752091 Email: enquiries@keatehouse.com

9 Brookfield Road, Lymm, Cheshire WA13 0QL



NAPA Award Winners 2017, 2018 Plus 2020 – Best Activity Team



Vicky is a Ms Great Britain Classic!



AGED 17, Vicky Ellis was the youngest contestant in the Miss Great Britain contest in 1983 – and came third.

Now aged 56, she was the oldest of 60 finalists in the first-ever Ms Great Britain Classic competition.

In between, she has not exactly been idle – so much so that at one time in the Eighties she was contacted by the Guinness Book of Records because it was believed she had won more beauty contests than anyone else.

These included Miss Blackpool, Miss New Brighton, Miss National Caravan, Miss Butlins Holiday Princess, Miss Nightclub of Great Britain and Miss Morecambe Bay.

And in 1988 she was again a finalist in Miss Great Britain and came third.

While all this was going on, Vicky, from High Legh, became a Mum twice!

She said: "I actually followed in my Mum's footsteps as she won a number of beauty contests and now my daughter, Tabitha, aged 16 is already modelling and about to enter her first competition."

Vicky's son, Jack, is 29.

The Ms Great Britain contest was launched to celebrate the 75th anniversary of the Miss Great Britain competition and the Ms Great Britain Classic is a separate contest for women aged 40-plus.

The final was held at a gala dinner at Leicester as Lymm Life was going to press!

New speed restrictions introduced

DUE to complaints of excessive speeds on Burford Lane in Lymm, police have worked with local residents, Warrington Borough Council and Lymm Parish Council to look for ways to improve road safety conditions for residents and road users.

As a result the speed limit has been reduced from 40mph to 30mph and further along the road, Mill Lane has been changed from 50mph to 40mph.

Lymm Osteopathic Practice
Established 1979

NEW ONLINE BOOKING SYSTEM
www.lymmosteopathicpractice.co.uk

	SUZETTE PULMAN N.D. M.R.N. D.O. Registered Naturopath & Osteopath		DARREN HAYWARD B.Sc. (Ost) Registered Osteopath
--	---	---	---

Registered with The General Osteopathic Council (G.O.Sc.)
01925 752264
The Rise, 16 Grammar School Road, Lymm WA13 0BQ

[t](#) [f](#) [in](#) [i](#)

Bird & Bay DECORATIVE LIVING

From bay trees to pink flamingos, a truly unique range of beautiful home and garden décor, you'll find something for everyone at Bird & Bay.

A quirky emporium sits inside this pretty shop, cottage garden plants and floral bouquets adorn the high street, bringing a new and exciting vista to the heart of Lymm village.

Whether you're looking for a gift, something for your home or outdoor space, or just to explore the secret garden at Bird & Bay, come and see us soon.

5 THE CROSS, LYMM, WA13 0HR
WWW.BIRDANDBAY.CO.UK

E.L.B. fireplaces Call us on: **01942 607250**
www.elbfireplaces.co.uk
70 Twist Lane, Leigh, Lancashire WN7 4DP

Fire Surrounds, Stoves, Gas & Electric Fires

Established 30 YEARS

No need to change your carpet - made to measure fireplaces

Over 75 displays over 2 floors

Live wood burning stove on display

Is your conservatory too cold to use in Winter?
Why not install a stove?



What's On in conjunction with Lymm Parish Council



PLEASE CHECK ANY EVENTS BEFORE ATTENDING DUE TO COVID-19 RESTRICTIONS.

LYMM PARISH COUNCIL

Tuesday October 12th, 7:30pm
Lymm Parish Hall
Check www.lymm.council.gov.uk for details.

LYMM THURSDAY EVENING BRIDGE CLUB

Lymm Village Hall every Thursday 7pm

MAPLE LODGE ART GROUP

Meet each Wednesday 9.00am - 11.30pm
Oughtrington Community Centre, Lymm
Details: 01925 755126

ROTARY CLUB OF LYMM

Meets at Statham Lodge on the 2nd and 4th Wednesday each month for a Fellowship and a Business meeting respectively.
Contact the Secretary 01925 758398

LOVING HEARTS & HANDS

Knitting for charity at Lymm Methodist Church, 2nd and 4th Thursday each month, 1.30pm - 3pm. Details: 01925 753298

MARKET LUNCHES

Eagle Brow Methodist Church
3rd Thursday in the month
Light lunches 12 noon till 2pm. All proceeds to Youth For Christ and YMCA Room at The Inn

GARDENING CLUB

Meet Third Wednesday of the month
Lymm Baptist Church, Higher Lane. 7.30pm
Visitors welcome. £2 includes tea and cake

LYMM FLORAL ART GROUP

Lymm Village Hall
Third Monday of the month (except August and December) at 7.30pm. Visitors most welcome. Contact: 07876 176501
lymmflorallart.org.uk

LYMM PHOTOGRAPHIC SOCIETY

Every 2nd and 4th Wednesday
(ex July & Aug), 7.30pm
Spread Eagle pub, Eagle Brow.
Details: www.lymmphotosoc.org.uk

LYMM WINE AND BEER CIRCLE

3rd Wednesday of the month, 8pm
The Spread Eagle Hotel
Details: 01925 756444

LYMM CONCERT BAND

Rehearsals every Thursday evening
United Reformed Church, 8pm.
Details: 01925 752934

LYMM WI

Every second Wednesday, 2-4pm at Lymm Youth and Community Centre. Visitors welcome.

LYMM BOOK CLUB

Second Thursday of the month 7.30pm,
Spread Eagle, Eagle Brow. Details 01925 752371

4LYMM VOLUNTARY ORGANISATION

Meet every 2nd Monday at 7.30pm in the Bridgewater Club, Whitbarrow Road.
All welcome. Tel 01925 756378 for details.

LYMM AND DISTRICT MIXED VOICE CHOIR

Every Wednesday 7.30 Lymm Methodist Church. Contact 01925 601664.
cafh@cstones.co.uk

PROBUS CLUB OF LYMM

A small, friendly social club for retired people.
Meets on second and fourth Tuesdays at 2:15pm.
Details: www.lymmprobus.club

LYMM DINGLE PROBUS CLUB

A friendly busy social club for retired men.
Meets on alternate Thursday afternoons at Lymm Baptist Church.
Details: www.lymmdingleprobus.club
Club secretary 01925 759995



**LYMM
PARISH
COUNCIL**

Tuesday October 12th, 7:30pm
See parish council website for details.

Lymm Festival seeking to strengthen publicity team with three new volunteers



The winning Scarecrow from this year's Festival with the theme celebrating Lymm's 'Lockdown heroes' which was won by St Mary's Pre-School with a 'Scientist'.

LYMM Festival is looking to strengthen its publicity team and is planning to recruit three new volunteers to carry out specific roles.

Due to the COVID-19 pandemic, the normal Festival had to be cancelled both this year and last year. 'In person' events were not possible but the Committee put on a small number of successful on-line events.

Chairman Ian Marks said: "We really hope we can get back to normality next summer. Some of our events sell out but others need more of a push. That is why we want to build up the team looking after our publicity. It is an all-year-round commitment but the volunteers will be especially busy in the run-up to the summer Festival."

Brief details of the kind of people we are after are given below but if you are interested in finding out more visit <https://www.lymmfestival.org.uk/strengthening-our-publicity-team/>

Publicity Lead – responsible for producing a strategy to publicise events and managing the rest of

the team to make this happen. Background in marketing or publicity is desirable but must be a good communicator and organiser.

Social Media – Prepares and publishes posts for various social media platforms after liaising with event organisers. Must have experience in using social media and ability to communicate messages effectively.

Press & Newsletters – Writes regular newsletters for sending out to the mailing list of subscribers and writes occasional press releases. Must have ability to write in a clear and engaging way.

Ian added: "We are very proud of what we do, and new volunteers will be contributing to a successful venture which is now a well-established part of the Lymm calendar. If you are interested or want to find out more, please contact our secretary Alison at secretary@lymmfestival.org.uk"

Lymm Twin Town Society getting back to normal

LYMM Twin Town Society is getting back to normal and recently held a BBQ at a farm in Warburton, owned by two of their members, Richard and Karen Clegg.

Due to COVID-19, many members had not met up for eighteen months so welcomed the opportunity to chat with friends again. The weather was mixed but with a full set of Gazebos, the event wasn't impacted at all. There was a good turn-out and members enjoyed barbecued meat from a local butcher served with homemade salads and finished with homemade desserts.

One of the members present summed up the views of others. "Thank you to all the committee for the splendid barbecue we enjoyed. Such a lot of work for Neil Collins, Richard Clegg and helpers to organise and prepare the site and the food was delicious. It was so

nice to see everyone again and to feel that things are perhaps starting to get back to something approaching normal."

Lymm Twin Town is open to anyone who lives in Lymm and the surrounding area. In normal times there is an exchange every year with a delightful town, Meung-Sur-Loire in France near Orleans. The last visit was by Meung to Lymm in 2019 and after a two-year 'pandemic' gap, a visit is planned to Meung in 2022. If you think you might enjoy a few days in France, then you can contact the Society via their website www.lymmtwintownsociety.co.uk or by emailing lymmtwintown@gmail.com.

Their next social event is a "Beaujolais Nouveau Evening" on Friday, 19th November and guests would be made very welcome.

G P BROADSMITH & SON

POOL FARM, LYMM
Bottled on the Farm from our Free Range Cows

**DELICIOUS MILK FROM OUR HAPPY COWS
DELIVERED TO YOUR DOOR!**

Here at Pool Farm we take good care of our free-range dairy cows. They produce fresh, quality milk which is bottled in our own farm dairy and delivered to local doorsteps. We also stock a range of associated products such as eggs and potatoes, all sourced from local farms.

Call 757655 or email milk@broadsmith.com to discuss early morning deliveries to your doorstep and follow us on Facebook or Instagram at @broadsmiths where you can keep up to date with life on the farm!

G P BROADSMITH & SON
POOL FARM, POOL LANE,
STATHAM, LYMM, WA13 9BW
TEL: 01925 757655
YOUR LOCAL DAIRY Est. 1932

ANDY CARTER MP

WORKING HARD FOR WARRINGTON SOUTH

Here to Help

As your Member of Parliament I am here to help residents with any local or national concerns. I am absolutely committed to providing advice and support to all Warrington South residents. So if you need help, please don't hesitate to get in touch.

Contact Andy

- ☎ 01925 231 267
- ✉ andy.carter.org.uk
- ✉ andy.carter.mp@parliament.uk
- 🐦 @MrAndy_Carter
- 📍 Andy Carter Warrington South
- 🏢 Warrington South Constituency Office
- 1 Stafford Road, Warrington WA4 6RP

Love your garden!

Monthly gardening advice from Primrose Hill Nurseries



Rob Groom
Nursery Manager

- Plant spring-flowering bulbs now, such as daffodils, crocus and hyacinths.
- Start your autumn garden cleanup. Remove any old crops that have finished, and clear away weeds to leave your plot clean and tidy for the winter.
- Refresh your pots and hanging baskets with new Autumn bedding and basket plants for colour in your garden through the winter months.
- Lift and divide overgrown clumps of perennials, replanting the divided sections so that they have a chance to establish before the soil cools down.

Professional tree services



Free Quote

- Domestic
- Commercial
- Site Clearance
- Vegetation management
- Stump grinding
- Re-planting
- £10m public liability insurance

Beechwood Industries
www.beechwoodindustries.co.uk

For more information, please call us on
01925 860544

CP CS Citib CCE Constructionline City Guilds NPTC Qualified CHAS

Your Garden Isn't Just For Summer

Keep busy in your garden this Autumn with our new seasonal range of:

AUTUMN BASKET & BEDDING PLANTS

FRUIT TREES & BUSHES

SPRING FLOWERING BULBS

AUTUMNAL PLANTERS & BASKETS



PRIMROSE HILL
N U R S E R I E S
Est. 1935

OPEN TO THE PUBLIC AND TRADE: MON-SAT 8.30am-5pm. SUN 10am-4pm.
WARRINGTON ROAD, HIGH LEGH, KNUTSFORD, CHESHIRE WA16 0SQ. 01925 752635




Changes to Breast Care Services across Warrington & Halton

Where will I go for breast care?

Following our recent consultation there have been some changes to Breast Care Services. Here we look at where you will visit and why.

Routine Mammograms

If you need a routine mammogram our breast screening services remain the same and patients can choose to attend several locations. When you receive your appointment reminder the locations will be listed so that you can make the best choice for you.

Services following a referral

Our Assessment Clinics provide services after a routine screening mammogram has shown changes warranting further tests.

Patients who have found breast changes or lumps may be referred by their GP to our Symptomatic Service for more detailed tests including a mammogram, ultrasound scan or a biopsy.

These services, previously offered at Kendrick Wing Warrington Hospital, have now relocated to the new Breast Care Centre in the Captain Sir Tom Moore Building (CSTM) at Halton Hospital. The new centre has two new mammography rooms, two ultrasound clinic rooms, consultation and counselling rooms.

This forms part of our work to

create a Centre of Excellence which offers rapid access outpatient clinics and to ensure that patients receive the best specialist care in a dedicated, supportive setting.

The existing Burney Breast Unit at St Helen's Hospital will also continue to offer these clinics.

What happens if I am diagnosed with breast cancer?

Patients can choose where to have their treatment.

The new Breast Care Centre is co-located with the CanTreat Centre in the Nightingale building where chemotherapy services are operated by Clatterbridge Cancer Centres.

The Macmillan Delamere Centre is also adjacent to CanTreat and offers a range of support services including complementary therapies and information on financial and other support available to those diagnosed with cancer. Breast surgery is carried out at the Captain Sir Tom Moore building.

Travel - planning your journey

Patients required to attend assessment or symptomatic services will need to travel to either Halton Hospital, Runcorn or St Helens. A free shuttle bus operates between Halton and Warrington hospitals at regular times throughout the day. The timetable is available at www.whh.nhs.uk

Car parking is available at all sites, with a wide range of concessions and help to access the Hospital Appointment Scheme for those receiving benefits.

The Breast Care Centre at the Captain Sir Tom Moore building at

Halton Hospital can be accessed by road from Warrington by using the toll-free roads with no need to cross the toll bridges. A new bypass at Sluthers Lane near Bank Quay station has considerably shortened travel time to Runcorn and is free to use.

We continue to listen

To ensure that patients are receiving the best possible experience we will continue to listen to patient feedback and monitor suggestions throughout the year, allowing us to make any further reasonable adjustments.



New Breast Care Centre

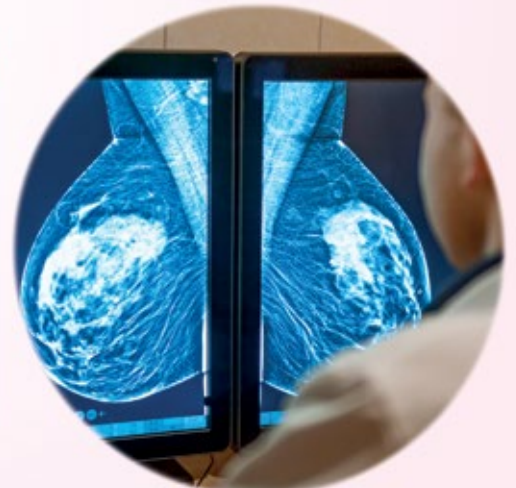
NHS
Warrington and Halton
Teaching Hospitals
NHS Foundation Trust

Our recent consultation revealed support for the proposed changes to our breast care services that will continue to provide the best specialist care in a dedicated, supportive setting.

Patients accessing the service have doubled over the past 20 years and the opening of a new Breast Care Centre in the Captain Sir Tom Moore Building, Halton Hospital, will improve access for all patients and bring together specialist resources and equipment in a setting that offers a significantly enhanced patient experience.

The new Breast Care Centre, Captain Sir Tom Moore Building, Halton Hospital will ensure:

- The service can continue to expand to accommodate more patients
- Improved access; the Kendrick Wing at Warrington Hospital has experienced significant issues associated with its century-old buildings and challenges which restrict access to the first-floor service for certain patients
- Scarce specialist resources and equipment are brought together into one site to enable expansion of the service
- We provide a more attractive employment offer to Breast Radiologists and Mammographers in the face of a national shortage of these vital roles



Visit: www.whh.nhs.uk

Nursery celebrates 50th anniversary

HIGH Legh Pre-School Nursery hosted a family fun-day to celebrate its 50th anniversary in September.

Families enjoyed a whole host of activities including a bouncy castle, stalls, cake sale, games and crafts and the event raised £675 for the pre-school, which is a registered charity.

Jenny Cookson, co-chair of the parent-led pre-school committee, said: "Our nursery has been at the heart of the High Legh community for half a century, providing care for generations of families, so it was wonderful to be able to celebrate this momentous anniversary with the wider community, who have supported us so much over the years.

"As a registered charity, we rely

heavily on our fundraising events held throughout the year, which all had to be cancelled due to the pandemic, so this was a particularly special occasion as not only was it our 50-year anniversary, it was the first time all our families and the community have been able to join together.

"It was a fantastic day, attended by families both past and present, and the money raised will help secure the future of our pre-school and ensure we can continue to provide the high-quality care and nurturing learning environment that we are known for."



Nursery Administrator Jennifer Nicholls mans the cake stall.



Deputy manager Leah Tippett with children, both past and present, at High Legh Pre-School Nursery, which is celebrating its 50th anniversary.

Cricketers avoid relegation – but only just!

LYMM Oughtington Park managed to avoid relegation from division two of the UKFast Cheshire Cricket League – but only just.

They won their last match against near-neighbours and fellow-strugglers Appleton – who were consigned to division three.

Main difference between the two sides in the match was a fine, unbeaten 100 from Lymm skipper Travis Scholes.

Appleton batted first and were

restricted to 143-8, skipper Rory Kellett top scoring with 45.

Mohammed Bhola, 2-18 and James Knowles, 2-15 were Lymm's most successful bowlers.

Lymm knocked off the runs for the loss of just two wickets thanks to Scholes' century and an unbeaten 36 from Jake Hughes.

The 2nd XI did rather better in their league, finishing fourth and winning 12 games and losing seven

PRIESTLEY COLLEGE
WARRINGTON



Open Events

TUE 5 OCT SAT 6 NOV
WED 6 OCT WED 17 NOV

for ENROLMENT *SEPT 2022*

To register your place and for times / arrangements go to priestley.ac.uk

"Teachers ensure students develop the skills and knowledge they need to be successful in their qualifications and in their working life." **Ofsted**





LYMM
SIXTH FORM

OPEN EVENING

THURSDAY 11TH NOVEMBER 2021
5PM-8PM

01925 755458

WWW.LYMMHIGH.ORG.UK/SIXTH-FORM
OUGHTRINGTON LANE, LYMM, CHESHIRE, WA13 0RB

f @LYMMHIGHSCHOOL

t @LYMMHIGH6THFORM



Commercial • Commercial Property • Litigation
Employment • Wills • Trusts • Probate
Personal Injury • Conveyancing • Crime • Family & Divorce

01925 231000
info@fdrlaw.co.uk

Serving Warrington and surrounding areas

www.fdrlaw.co.uk



Lymm Historic Transport day looks to future as event director prepares to step down

ORGANISERS of the Lymm Historic Transport Day are “looking for new blood” as event director and founder Alan Williams prepares to step down.

As one of the outstanding successes of Lymm Festival in recent years, from relatively small beginnings on a windswept day in 2013 Lymm Historic Transport Day has grown to become, arguably, Lymm’s premier event of the year: quite something in a village famed for its festivals and special occasions.

The event, on the fourth Sunday in June, has attracted thousands of visitors and exhibitors from all over the country and is almost unique in its combination of forms of transport from bicycles and cars to boats, traction engines and aircraft. It has also raised tens of thousands of pounds for local causes and provided canal educations for over

1,000 primary children

But now the current volunteer organisers, led by Alan Williams are looking for new blood to pick up the challenge of carrying on the event. “I turned 70 this year” explained Alan “and while it has been an immense pleasure and privilege to lead the fantastic team that has made it all possible there are now other priorities that I would like to give more time to. It was very sad that we have twice had to cancel the event due to Covid, particularly this year when we seemed so close to being able to go ahead but even if it had been able to proceed I had already decided that this should be my last Transport Day as Event Director.”

Alan is not the only member of the management team stepping down but several members of the group are still in place and there is a well-established plan and contact list that would give new management a great kick start. The event is in a very healthy financial position and Alan and his colleagues are ready to offer

transition help and advice to any new team.

If you would like to know more about the opportunity to get involved in this outstanding event to ensure it continues feel free to make a “no commitment” enquiry to Alan Williams at 07540 096282 or email lymmtransport@gmail.com



Family-owned nursery sells to corporate buyer

LYMM-based Rainbow Day Nursery, which has been family-owned for more than 30 years, has been sold to corporate buyer Atherton House.

The nursery was established by the owner’s family in 1990 and is registered for 72 children aged 3 months to 5 years of age.

In its 30 years of operation, the nursery has cemented an enviable reputation in the local area for providing the highest quality of

childcare. Due to this, the setting received an assessment of “Good” from Ofsted in its most recent inspection and has a 5-star food hygiene kitchen, providing excellent nutrition to children in their care.

Additionally, many members of the staff have been with the business for 10 to 20 years, a testament to the well-run setting and the enjoyment of providing children with a stimulating environment.

With the setting being within the client’s family for over 30 years, they wished to undertake their well-deserved retirement and instructed Redwoods Dowling Kerr in the sale.

The excellent reputation of the setting, combined with the expert marketing campaign, generated high levels of interest in the setting, with 10 viewings.

The buyer, corporate operator Atherton House, was attracted to

the setting due to the family nature of the business. They have four additional settings and decades of experience within the sector, highlighting them to be a suitable buyer for Rainbow Day Nursery.

Sales Negotiator Natasha Satterthwaite said: “I am delighted for both parties in the sale. I would like to wish them both the best of luck with their future endeavours”.


E SMITH AND SON
PLANT CENTRE
WWW.LYMMPLANTS.CO.UK
 Over 60 years in Lymm and still growing!
THE NURSERY, BOOTH'S LANE, LYMM, WA13 0PF
01925 752459
Autumn Planting
 Hanging Baskets, Planters and Containers
 Ready Made or Build Your Own
 Bedding Plants, Basket Plants, Perennials and Shrubs ready now
 Pick and Mix Bulbs in Stock
OPEN 7 DAYS: MONDAY TO SATURDAY 10AM - 4PM | SUNDAY 11AM – 3PM

Live events return to Lymm Festival with Eddie the Eagle and Justin Moorhouse

AFTER the disappointment of cancelling events in the summer due to the COVID-19 pandemic, Lymm Festival is bouncing back with two events in the coming weeks to raise everyone's spirits.

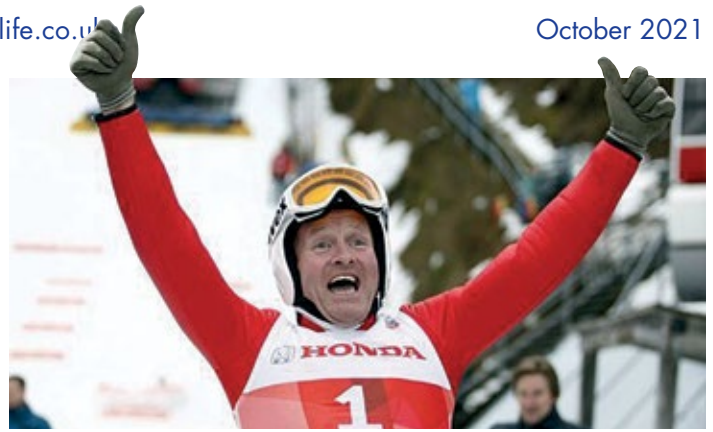
First up is An Evening with Eddie the Eagle, the most unexpected of sporting heroes, who went from plasterer to ski jumper at the 1988 Calgary Winter Olympics.

Michael (Eddie the Eagle) Edwards brings an entertaining, witty and inspirational talk about his overnight transformation into a ski-jump legend, followed by a Q&A session and chat with Lymm's very own Father Michael Burgess. The event is at 8:00pm on Thursday 14th October at Lymm High School.

The ever-popular Festival Comedy Night returns on Wednesday 3rd November at Lymm Rugby Club with a line-up of award-winning stand-up comedians for an evening of adult humour. Justin Moorhouse

("Young Kenny" in Phoenix Nights) has toured the country as one of the UK's leading stand-ups. Tom Wigglesworth is a regular panel show guest and is now into his fifth series of "Tom Wigglesworth's Hang-ups" on BBC Radio 4. Jamie Hutchinson is a rising star of the circuit, winner of both Manchester and the Leicester Mercury Comedian of the Year awards in 2019. The show is compered by Rob Riley and will undoubtedly be a great night of laughs.

Tickets are £15 for each event and are on sale now at the Festival website, www.lymmfestival.org.uk, where you can find out more information about the events and venues.



Lymm Festival

14TH OCTOBER

8:00PM DOORS OPEN 7:30PM

AN EVENING WITH EDDIE THE EAGLE

Three decades after he (sort of) took to the air at the Winter Olympics in Calgary, Eddie the Eagle flies into Lymm!

Come along and enjoy a witty and entertaining talk from Eddie followed by a chat and Q&A with our very own Fr. Michael Burgess.

LYMM HIGH SCHOOL, OUGHTRINGTON LANE, WA13 ORB

TICKETS £15 ON SALE NOW FROM LYMMFESTIVAL.ORG.UK

Car parking at the School. More information at www.lymmfestival.org.uk @LymmFestival

Lymm Festival

3RD NOVEMBER

8:00PM DOORS OPEN 7:30PM

COMEDY NIGHT

IS BACK AT LYMM FESTIVAL

TICKETS £15 ON SALE NOW FROM LYMMFESTIVAL.ORG.UK

AWARD WINNING STARS OF TV, RADIO & STAND-UP

JUSTIN MOORHOUSE

TOM WRIGGLESWORTH

JAMIE HUTCHINSON

WITH COMPERE ROB RILEY

VENUE

LYMM RUGBY CLUB

CROUCHLEY LANE

WA13 OAS

Bar available and car parking at the Club. Please be aware that access is up steep stairs to the venue.

OPEN EVENINGS



**Do you want to see what college life is like?
Then come along to an Open Evening!**

Monday 4th October

5.00PM - 8.00PM

Tuesday 19th October

5.00PM - 8.00PM

Wednesday 10th November

5.00PM - 8.00PM

Open evenings are a great way for you to explore our campuses. You will get to chat to current students, meet with industry-experienced course tutors and tour our state-of-the-art facilities.

Register online:

wvr.ac.uk/openevenings



**Warrington
& Vale Royal
College**

EXCHANGE YOUR GOLD AND SILVER FOR INSTANT CASH



All items of jewellery accepted

Did you know...?

We accept silver jewellery, cutlery, tea sets, spoons, cigarette cases, candlesticks, trophies, trays, medals, coins and pocket watches.

ROLEX WATCHES WANTED! ANY CONDITION

Open: Tuesday-Saturday: 10am - 5.30pm

1 London Road, Stockton Heath (First floor entrance on Fairfield Road)

07544 486 621



GOLD & SILVER BULLION DEALER

Captain's golf day helped raise £10,000 for charity



CAPTAIN'S Golf Day at High Legh Golf Club, helped to raise £10,000 for social mobility charity WeMindThe Gap.

The charity has been the club's nominated charity since last year, with members getting involved in fundraising efforts.

A field of more than 80 golf enthusiasts gathered at the club to take part in the Golf Day, with John Welch, Jon Cole and Rob McLean coming out as the day's winners.

The charity, serving the North West and North Wales directly addresses and challenges social mobility through running holistic programmes for young people, delivered with unashamed love and care. Filling the gaps in young people's lives, ensuring that they have the basics in place that the rest of us take for granted – a trusted person to turn to, a safe place to live, confidence and basic skills.

The day of golf was rounded off by an evening of entertainment from The Three Northern Monkeys featuring Alan Noone as well as a silent auction and raffle.

Men's golf captain Joe Lauder said: "The day went incredibly well and everyone who took part was fantastically generous – thank you. It was great to get back to a bit of normality with this being the first charity event, we have been able to hold for some time".

Lynda Tyler, ladies golf captain, thanked everyone who came out to support the event. She said: "A huge thank you to everyone who supported the event and donated. We would also like to thank Rachel and Diane from the charity who attended the day and were a tremendous help".

Diane Aplin, chief executive at WeMindTheGap, said: "We are incredibly grateful to everyone who took part in the Golf Day, bid on auction items and donated prizes. The funds will help make a difference to local underserved young people's lives".

"We would like to say a big thank you to Joe and Lynda and to High Legh Golf Club for supporting us through an unprecedented year. Joe, Lynda and their members extended their support to us as 'charity of the year' to reflect the months we could not fundraise with them during the pandemic. This level of support was so gratefully received and it's been a pleasure to work with the club over the past year and a half".

Need IT Support at Home?

- Skilled and Friendly Technicians
- PC and Laptop Support
- Home Visit or Remote Dial-in
- Antivirus/Malware Check
- Unlimited Support Time



Ask for Ethan, Josh or Mark



Call our Team: 01925 251143

sales@aspire-computers.com | www.aspire-computers.com

FULLY FITTED ROLLER GARAGE DOORS

FROM **£895** * WAS **£1,354** INC VAT

* Offer Valid For Openings Up To 2.4m Wide & Inc: 2 Remote Controls, 55mm White Slats, Internal Manual Override



WHATS INCLUDED:

- ACOUSTIC & THERMAL INSULATION
- TWO REMOTE CONTROLS
- EXPERT MEASURING & FITTING
- 24 COLOURS AVAILABLE

Made To Measure... **ROLLER GARAGE DOORS**

Garolla can save a lot of space inside your garage. Rolls up vertically into a box. Takes only 8 inches of head-room! Opens vertically so you can park up close to the door. Remotely open/close the garage even from inside your car.

CALL US TODAY

Phone: **01925 205 302**

Mobile: **07537 149 128**



YOUR LOCAL DRAINAGE EXPERTS

Nationally known, locally owned!

- DRAIN CLEANING & UNBLOCKING**
- DRAIN CCTV SURVEY**
- DRAIN REPAIRS**

Whatever the problem we are available 24/7!

01942 644213

www.dalrod.co.uk



Council “strongly oppose” passing on cost of Toll Bridge improvements to local motorists

WARRINGTON Borough Council leader Cllr Russ Bowden has written to Peel Ports on behalf of the council strongly opposing controversial plans to significantly increase tolls on Warburton Bridge.

While welcoming proposals to upgrade the Rixton & Warburton Toll Bridge, Cllr Bowden says the borough council is “strongly opposed” to the cost being passed onto local motorists, with tolls set to rise almost eightfold from the current 12p to up to £1 per crossing.

The letter has been sent as part of a Consultation Response to the recently published ‘Sustainable Investment Plan.’

A total of £6.5m is proposed to be invested in the Toll Bridge between Rixton and Warburton by The Manchester Ship Canal Company, which owns and operates the bridge, who have published an outline of upgrades to the approach roads, footpaths and tolling system.

In his letter, Cllr Bowden said: “In summary, Warrington Borough Council welcomes the proposed upgrade of the bridge and its approach roads as well as the introduction of an automated tolling system that will reduce queues and delays, however, we are strongly opposed to your proposed significant increase in tolls of potentially up to £1 for a single trip and £2 for a daily ticket.

“The Council supports your proposals to invest in the bridge, including the approach roads as well as the tolling system as this will future proof the bridge for many years to come. The automated tolling system will greatly reduce delays and congestion, particularly at peak times. The Council also welcomes your plans to investigate strengthening the bridge as part of

the refurbishment work in order to allow buses to use the bridge more frequently.

Whilst Warrington Borough Council acknowledges that a significant upgrade to the bridge is much needed and welcomes these plans and the benefits this investment will bring to all users, it is strongly against the cost of this investment being passed onto local motorists through your proposed significant increase in tolls.

“Under your plans, you are proposing to fund these improvements through increasing tolls from 12p per crossing to up to £1 per crossing. The Council finds it completely unacceptable that motorists should bear the brunt of this investment and we are extremely concerned by the scale of the proposed increases which could find motorists paying up to eight times more per trip than the current charge.

“This is a substantial increase which could have a significant financial impact on motorists, particularly those who need to use the bridge regularly to get to work or visit family and as such, Warrington Borough Council would like to see the tolls removed completely or at worst, kept at the current levels.

“The council acknowledges and welcomes your plans to provide a discount of 50% for residents living in a defined geographical area along with further discounts for high-frequency users and the possible introduction of annual passes that would allow unlimited crossings of the bridge. However, the discount

rate of 50% is not acceptable in context of the revised toll being proposed.

“The Council is of the opinion that as a result of poor planning and lack of investment in the bridge by Peel Ports, that a considerable backlog of maintenance issues have been left to build up which sees the bridge in the neglected state it can be found in today. As barely any maintenance work of any significance has been carried out on the bridge over the years I would have thought that Peel Ports would have managed to build up a significant fund from the existing toll charges and the operation of the Canal and would therefore urge them to invest in this upgrade from their own resources. It is understood this could be done without an order.

“Although Warrington Borough Council welcomes the proposed investment it absolutely cannot support and strongly opposes the significant increases in toll charges and would urge you to reconsider this.

“Should the proposal proceed to an application for a Transport and Works Act order without significant amendment satisfactorily dealing with the Council’s concerns then on the current information before us we would have to exercise our power as a statutory objector to make an objection to the application in accordance with the Transport and Works (Applications and Objections Procedure) (England and Wales) Rules 2006 and consider the other options available to us.”



Alterations to historic Lymm Hall given the green light



PLANS have been approved for alterations to the East Wing of historic Lymm Hall.

The scheme will result in three flats being converted to a single dwelling. Warrington Borough Council planning officers have also given Listed Building consent for the conversion at the Grade 2 Listed building.

Officers say the proposed alterations are considered sympathetic to the character of the existing building and will not detract from the overall aesthetic of the building.

They will also result in the removal of some “clutter” from the outside of the building.

Officers said there was general acceptance of the proposals which were supported by a neighbour.

But some concern was expressed over proposals for a swimming pool, which were not part of the application.



Oughtrington Community Primary School

SCHOOL CLEANER REQUIRED ASAP

**15 HOURS PER WEEK (term time)
£9.50 per hour**

**3pm-6pm (Monday-Friday)
Term time only**

We are looking to appoint a permanent school cleaner to join our friendly and highly motivated team. A reliable and conscientious individual is required to help ensure the school is a safe clean environment for both pupils, staff and visitors.

The successful candidate will need to work within a team and be able to use his/her own initiative when working alone. They will also need to be fit to be able to fulfil this physically demanding role.

Experience would be an advantage as would any relevant training, although training will be given to the right candidate.

If you would like to be part of our friendly team, please download an application form from the school’s website and return it to Mrs Todd in the school office no later than Thursday, 21st October 2021.

Our website address is www.oughtringtoncps.co.uk

Oughtrington Community Primary School is committed to safeguarding and promoting the welfare of the children and staff and expects all adults to share this commitment. Enhanced DBS clearance will be required. Further information about the Disclosure Scheme can be found on homeoffice.gov.uk/agencies-public-bodies/dbs. Visits to the school are warmly welcomed and encouraged.

Successful applicants will be contacted for an interview.

Lymm Colts Academy on the look out for new recruits

LYMM Colts Academy based at Lymm Rugby Union Club is on the lookout for new recruits.

Lymm RFC runs an academy for U16 (Year 11), U17 (Junior Colts) and U18 (Senior Colts) teams with combined coaching resources and support including from the Senior team.

If you are looking to keep playing rugby or fancy a new start, come down and have a go. The club pride themselves on playing fast-paced rugby in an inclusive fun environment that prepares players for university and senior rugby and LIFE!

They train and play on a state-of-the-art RFU artificial pitch and compete widely across the

North West. There are regular guest training sessions from some notable rugby experts including Sale Sharks. If you were thinking of hanging up your boots or fancied getting a new pair why not come down and give it a go!

For more information on each age group with training times and who to contact please visit: www.lymmrugby.co.uk/ and select the Academy tab.

Alternatively, email content.lymmrfc@gmail.com and your enquiry will be forwarded to the relevant age grade coaching team.



Tennis club serves up an ace to celebrate veteran player's 90th birthday!

MANOR Road Tennis Club at Lymm served up an ace to help veteran member Ralph Chambers celebrate his 90th birthday.

To mark the occasion the club held an American Tournament at Manor Road and an afternoon tea with a birthday cake as part of their celebration for Ralph, who has been a member at the club for nearly 40 years.

Married to wife Pam for 69 years the couple moved to Lymm from Manchester.

Ralph continues to play at veterans tennis and still has a fast

serve and can occasionally serve an ace!

He is an active committee member and is very involved with Lymm Baptist church

He regularly visits old people in residential homes and takes the elderly for hospital and dental appointments – many of whom are much younger than him!

Previously he ran Children's Holiday Clubs for all Lymm Primary schools and the surrounding district.

Committee member Yvonne Halford said: "Ralph is a person that would go out of his way to

help anyone, never complains or asks for any help for himself – he is a remarkable person!"

Manor Road is a friendly, inclusive and ambitious small club based in Lymm and an LTA registered club. They were awarded Tennis Clubmark Accreditation by LTA in 2010.

The club has merged with Lymm Rugby Club (LRC) to become their Tennis Section and is now part of a multi-sports hub. They will have 4 new floodlit courts and better facilities once completed.



Obituaries

Terence Anthony Hastie

The funeral has taken place at St. Peter's Church, Oughtlington, of Terence Anthony Hastie (Terry) of Rush Gardens, Lymm.



Terry passed away peacefully at home with his family around him on Saturday, September 11.

Originally from Middlesbrough, he made his home in Lymm over 40 years ago. Terry loved Lymm village life, in younger years he played darts for The Farmers Arms and The Bulls Head and was an enthusiastic participant of the early doors Bulls Head table.

Golf replaced darts and he was proud to have been a Captain of High Legh Golf Club and Mere Golf and Country Club. Terry is survived by his wife Anne, daughter Louise and son Terence.

Funeral arrangements were by John Burrows and Sons, of Lymm.

Richard John Foster

THE funeral has taken place of Richard John Foster – known as Dickie – of Quayside Mews, Lymm, who died aged 58, on August 25.

A great Yorkshireman, who fell in love with the village of Lymm, Mr Foster had been a potato merchant who later owned a fish and chip shop in Chester.

He was a keen motorcycle enthusiast and was greatly loved by his wife, Josette, children Steph and Tim, stepchildren Remy and Joelle and grandchildren Phoebe, Cooper and Sophie. The funeral service took place at Altrincham Crematorium.

Funeral arrangements were by John Burrows and Sons, of Lymm.



Susan Jane Singleton

The funeral took place at Altrincham Crematorium of Susan Jane Singleton, nee Mawbey, aged 76, of Moston Grove, Lymm, who died in hospital on August 20.

Sue – also known as Mama – was a well-known character in Lymm as she had worked at the Lymm Hotel for 27 years, and also at the Conservative Club, Saddlers Arms and Lymm British Legion.

She retired five years ago and spent much of her time walking Toby, her black Labrador dog, around Ridgway Grundy Park. She

loved her holidays in Greece where she climbed the Acropolis, visited the "Mama Mia" church and was even taught to snorkel by her son-in-law Steve.

Sue was very proud of her family, especially her granddaughter Jessica and step grandson doctor Jack.

She is survived by her daughter, Claire, son Steven and Toby the dog, who has been adopted by her son and partner, Joe.

Funeral arrangements were by John Burrows and Sons, of Lymm



Established 1878

John Burrows & Sons
Fourth Generation Independent Family

Funeral Directors

Friendly & Professional Service
Day or Night ~ J. Tandy

The Old Smithy, Mill Lane, Lymm.
WA13 9SE Tel: (01925) 752501

Golden Charter
Funeral Plans

www.johnburrowsandsons.co.uk

CLASSIFIED

Call 01925 631592 to advertise

ACCOUNTANCY & BOOKKEEPING

BOOKKEEPER/ACCOUNTANT. Licensed for maintaining financial records, VAT Returns, Payroll Service, Management Accounts, SAGE Software Consultancy. **Contact: 07815 617914.** (5/21)

AIR CONDITIONING

EXPERIENCED AND PROFESSIONAL Warrington-based 4 Seasons are air conditioning specialists. We install, maintain and repair air conditioning for business and homes. FREE call outs and special offers. **Contact John & the team on 0330 400 5471 or enquiries@4sac.co.uk or www.4sac.co.uk** (5/20)

CARPET CLEANING

A1 STAINBUSTERS. A Warrington company cleaning carpets, hard floors, Upholstery (Leather + fabric) and curtains in situ. FREE quotes for domestic and commercial. Approved carpet cleaners for Hancock and Woods for over 10 years. **Call John on 07765 314080** (12/22)

SIMPLY THE BEST CARPET CLEAN YOU will ever have. Cleaners UK Ltd. Est over 30yrs. Have your carpets & sofas beautifully deep cleaned leaving them fresh smelling & colour restored. Latest & best methods. Dry/steam. Leather cleaning, oriental rug specialist. Professional, reliable & affordable. **For more info call Neil Riley on 01925 264989 / 07831 336060 www.cleaners-uk.net** (4/22)

CAR SALES

PARKVIEW CAR SALES

We buy and sell QUALITY CARS

Best price paid

Telephone Peter on 01925 575737 / 07957 545479

23 Padgate Lane
Padgate, Warrington
Cheshire, WA1 3RS (5/21)

CLEANING SERVICES

arleys angels

- Spring Clean Specialists
- Presenting your home for sale
- Moving house
- After building work cleans

01925 266834

... because you're worth it! (5/21)

SIMPLY THE BEST CARPET CLEAN YOU will ever have. Cleaners UK Ltd. Est over 30yrs. Have your carpets & sofas beautifully deep cleaned leaving them fresh smelling & colour restored. Latest & best methods. Dry/steam. Leather cleaning, oriental rugs specialist. Professional, reliable & affordable. **For more info call Neil Riley on 01925 264989 / 07831 336060 www.cleaners-uk.net** (4/22)

ELECTRICAL CONTRACTOR

TRUST PROPERTY ELECTRICAL SERVICES. NICEIC Part P Approved Contractor. All Electrical work undertaken. Inspection & Testing & PAT Testing. All work certified & guaranteed. **Call Tim on 07754409906 or 01925 601055** (5/21)

GARDENING SERVICES

- All aspects of tree surgery
- Stump grinding
- Waste removal
- Locally based
- Free quotation

Beechwood Industries

www.beechwoodindustries.co.uk

01925 860544 (5/21)

OPTICIANS

ADCOTT OPTICIANS. State of the Art opticians in the heart of Lymm Village. Comprehensive sight tests and a wide choice of spectacles tailored to you, whatever your budget. **01925 757075** (11/20)

PAINTING & DECORATING

BENJAMINS PAINTERS AND DECORATORS. 20 years professional experience in commercial and domestic decorating, wallpapering, coving, interior and exterior work. **Telephone 07837 452514 or 01925 755198.** (4/21)

BRUSH UP GIRLS. Female Painter and Decorators covering Warrington and surrounding areas Professional quality work assured No job too small Call today on **07554 486 626 or find us on Facebook** (5/21)

PHOTOGRAPHY

FAMILY & PET PORTRAIT PHOTOGRAPHY Lymm based Andrew Collier Photography specialises in family and pet portrait photography using Lymm locations as a backdrop. Personal service with beautifully made frames and albums. **Call Andrew on 01925 471091 or visit www.andrewcollierphotography.co.uk** (5/21)

RE-UPHOLSTERY

Orchard Soft Furnishings

RE-UPHOLSTERY
CURTAINS • BLINDS

FREE MEASURING & FITTING

TEL:(01925) 756388

www.orchardsoftfurnishings.co.uk (11/20)

TAXI / PRIVATE HIRE

Horn's

Airport Transfer & Taxi Specialists

CALL MARTYN: 01925 751761

MOBILE: 07881 786250 (5/21)

PAYROLL

WHY TRY TO BE A PAYE EXPERT? Watkinson Black can provide a cost effective payroll service, releasing you to concentrate on your business. **For further details please phone: 01925 413210 or e-mail: info@warringtonaccountants.co.uk** (5/21)

TYRES

EI ERGREEN Centre of Excellence

Express Mobile Tyres

Local Family Business. Est 1997

01925 810000

www.expresstyre.co.uk

Order Online Today!

Branded & Budget Tyres
Cars, Vans, 4x4's, Caravans
Light Commercial & Performance Vehicles

The tyre service that comes to you at home or your place of work

No Call Out Charge!

BRIDGESTONE MICHELIN

GOODYEAR Continental (5/21)

CHILDCARE

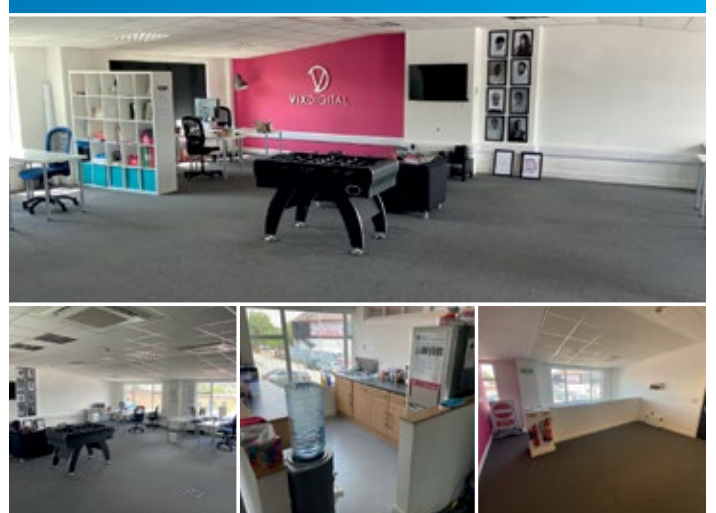
OFSTED REGISTERED CHILDMINDER Lives close to Ravenbank School. Full time or Part time placements available. Pick up and drop off from Ravenbank School or Rosebank Nursery. From ages 0-12 years. **For more information contact Carole on 07731 089656 or leave a message on 01925 755108** (4/22)

MORTGAGES

TALKING MORTGAGES - INDEPENDENT MORTGAGE ADVICE. For local, impartial and professional advice on all aspects of mortgages contact Darren Simpson on **07708 975122** (5/21)

OFFICE/SPACE TO RENT

THE NEW MEDIA CENTRE, OLD ROAD, WARRINGTON, WA4 1AT



APPROXIMATELY 1,500 SQ FEET

- FULLY REFURBISHED
- OPEN PLAN OFFICE
- CLOSE TO TOWN CENTRE
- SEPARATE BOARDROOM
- AVAILABLE IMMEDIATELY
- RECEPTION AREA
- AIR CONDITIONED
- 24 HOUR ACCESS

FOR MORE INFORMATION OR TO VIEW PLEASE CONTACT ALAN

07710 241 865 or alan@247print.net

Obituary Notices

While Obituary notices are published free of charge, due to pressures on space, we can never guarantee they will be used and there can also be a delay of several months.

If you would like to guarantee a notice to appear in the next available issue, these can be purchased for £75 plus VAT which helps towards the running costs of your free community magazine.

To place an obituary notice or any other public/family notice please email info@lymmlife.co.uk

Your notice will appear the same size as this advertisement.

The North West's leading supplier of concrete

www.barrowmixconcrete.com

BARROW - MIX

1984-2019
35TH YEAR
ANNIVERSARY



FREE SITE SURVEY

6 DAY SERVICE

All areas covered

Free barrowing service

Only pay for what you lay

From half a cubic metre upwards

Levelling/laying service if required

(minimum charge)

We can supply

C25, C30, C35 Fibre Reinforced



VISA

MasterCard

Maestro

SOLO

Call NOW for a FREE quotation

01565 734111 or 01942 722629