

Proud to be  
Warrington's  
most Google  
reviewed Sales  
& Lettings  
agent!

**BELVOIR!**

Property in person!

01925 636 855  
belvoir.co.uk/warrington

# warrington worldwide

Issue No. 260 August 2021 FREE EVERY MONTH



## Town's 'everyday heroes'

Page 3

**U**  
**urban**  
BUILDING PROJECTS LTD  
**Extension &  
Building  
Renovation  
Specialists**  
Tel: 01925 730888  
www.urbanbuildingprojects.co.uk

**WARRINGTON MORTGAGE  
CENTRE**  
Made for You  
01925 573 328

**NOW'S  
THE  
TIME...**

...TO INVEST IN YOUR HEALTH AND WELLBEING  
...TO DISCOVER OUR SPACIOUS, SAFE SITES  
...TO ENJOY FLEXIBLE, AFFORDABLE FITNESS

**12 month Anytime Membership  
for £300 - Saving you £90**

• State of the art gym • Daily fitness classes  
• Swimming pool • Indoor sports  
• Free childcare facilities • Healthy eating workshops  
• 24hr reception • Secure storage (bikes, gym bags, etc.)  
• All 1200+ sqm for you at any time

**See advert P5**



**Editor**  
Gary Skentelbery

**Production**  
James Bryan

**Advertising**  
James Balme  
01925 631592 opt 1

**Editorial**  
01925 631592 opt 2

**Email**  
info@warrington-  
worldwide.co.uk

**Websites**  
[www.culchethlife.com](http://www.culchethlife.com)  
[www.frodshamlife.co.uk](http://www.frodshamlife.co.uk)  
[www.lymmlife.co.uk](http://www.lymmlife.co.uk)  
[www.warrington.tv](http://www.warrington.tv)  
[www.warrington-  
worldwide.co.uk](http://www.warrington-<br/>worldwide.co.uk)

**Address**  
New Media Centre  
Old Road Warrington  
WA4 1AT

*warrington-worldwide* is  
published monthly by  
Orbit News Ltd.

*The contents of this magazine  
are fully protected by copyright  
and nothing may be reprinted  
or reproduced without prior  
permission of the publishers.*

*The publishers are not liable for  
any statement made or opinion  
expressed by third parties in this  
publication.*

Printed by TwentyFourSeven

# Editor's Comment



**ONE thing the COVID-19 pandemic has shown me is the huge number of inspiring people and organisations we have in Warrington.**

Despite the tough times for many, especially those who have lost loved ones or suffered serious ill health or lost their livelihoods, there has always been a beacon of light shining in these unprecedented times.

For every negative story, there have been plenty of positive ones involving hard-working community volunteers and local businesses or organisations offering some kind of support.

While we have been through some tough times here at Warrington Worldwide we have managed to continue to grow online, with more and more people logging on every day for their local news. Our online readership has grown by around 100 percent over the past year.

Now we want to share some of our success with the local community by launching the "Warrington Worldwide Legacy Project" whereby we will be donating £500 to local organisations or individuals to help them continue their great work in the community.

There will not be any lengthy application process.

All you need to do is contact us and tell us in less than 500 words with a supporting photograph of why someone or an organisation is worthy of a Legacy Project grant. It doesn't have to be COVID-related

but needs to show a long-term benefit to the local community and is sustainable moving forward.

While the grants are initially a one-off, further grants may become available on an annual basis, dependent on funds being available. The only condition is you are happy for your Legacy project to receive publicity.

This is our way of saying thank you to the local community which has supported us, not just during the pandemic but since we launched 22 years ago.

We are also investing in our website which is now attracting significant business from around the world as well as helping local businesses and organisations raise

their profiles, not just in Warrington but across the world.

While funds permit, we will continue to invest in the town we are proud to call home.

So if you would like to be considered for a Legacy Project grant simply email me at garys@warrington-worldwide.co.uk titling your email Legacy Project Application. I will endeavour to respond to all emails and even if you are not successful with your application we will do our best to help showcase your great work in the local community.

We aim to support 10 Legacy Projects over the next 12 months and have already selected our first one which will be announced in the coming weeks - watch this space and good luck with your application.



## Tracey Turton

**ARE YOU TIRED ALL THE TIME?**

**BOOK YOUR FREE 30 MINUTE DISCOVERY CALL**  
to find out more about a pioneering new approach  
to recovering from Chronic and Post-viral Fatigue

**01925 730123 | [www.traceyturton.co.uk](http://www.traceyturton.co.uk)**

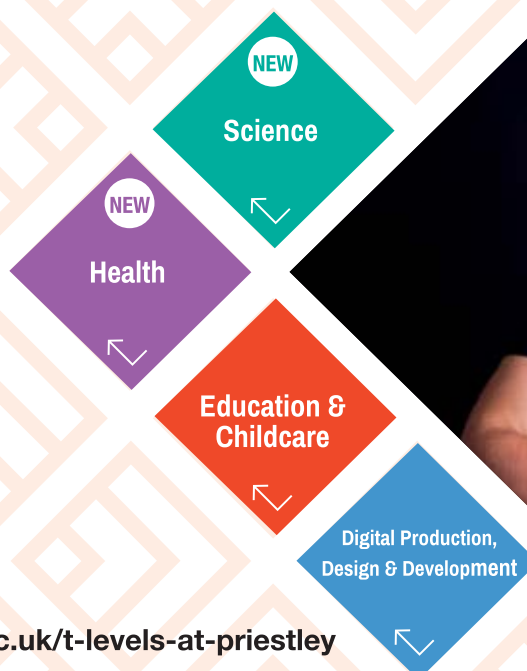
  
**PRIESTLEY**  
◆◆◆ COLLEGE ◆◆◆  
WARRINGTON

**T-LEVELS**  
THE NEXT LEVEL QUALIFICATION



## REASONS TO CHOOSE T-LEVELS

- ❖ Equivalent to three A-Levels
- ❖ Designed to prepare you for the workplace with the help of employers
- ❖ Lead to prestigious jobs and university places
- ❖ You will complete an industry placement of at least 45 days
- ❖ Priestley tutors are specialists in their subjects



To find out more or to apply, go to [priestley.ac.uk/t-levels-at-priestley](http://priestley.ac.uk/t-levels-at-priestley)



# Artist creates stunning display of "Everyday heroes" at Warrington bus station

**A visionary young artist from Warrington has created a buzz around the town with a stunning display created to celebrate the relationship between the town and its people.**

Local artist Cameron Brown, aged 27 has transformed Warrington Bus Interchange with a powerfully poignant collection of portraits of the town's "everyday heroes".

"As you are now so once were we" is a thought-provoking display of 48 portraits painted onto the glass of the bus station as a touching tribute to the people of Warrington, the impact they have had on their town, and the role our town played in their lives.

Cameron explained: "The aim behind the piece was to celebrate the impact that the people of Warrington can have on the town, often without realising, and to recognise the impact that the town can have on us as a collective.

"It was an attempt to try and remember the people that came before, appreciate the people that are presently having an effect on the town, and to be aware of the impact we can have on what is still to come."

Taking its name from James Joyce's novel *Ulysses*, Cameron's work attempts to add a sense of context and belonging to our own individual lives, to encourage people to look back at what has

gone before and how they have arrived in the position they find themselves in today.

This impressive display is the latest of a number of art installations on display in Warrington town centre, as part of a collaborative project delivered by Culture Warrington, Warrington Borough Council, and Warrington BID, with funding from Arts Council England and National Trust.

Forming part of the Warrington Contemporary Arts Festival and The Time Machine Festival, this dynamic project features the work of nine talented artists, who are displaying a range of paintings, light installations, sculptures, and more across the town centre.

Cameron's 3.5 metre tall work took a back-breaking 43 hours to complete and has unsurprisingly become a top talking point in the town.

Leah Biddle, Cultural Manager for Culture Warrington, said: "The response to this latest piece by Cameron has been truly staggering and it's so easy to see why.

"Poignant and powerful, this stunning display will quite literally stop you in your tracks, which is exactly what we wanted to achieve

through our Public Art Commissions project."

Cameron added: "With this piece I wanted to achieve something that had an impact and could positively disrupt someone's day. Instead of walking, head down, through an area of Warrington that has struggled to keep up with the rest of the town, in terms of development and the distribution of town funds, they could hopefully see something that makes them stop and appreciate their surroundings.

"I hope people can recognise the celebration of the lives of people who are no longer with us: grandparents who were the first to come to Warrington, veterans who went through hell only to have a positive impact on their home town, or just people who have moved here only to fall in love with this area.

"If they can look upon it and feel pride then I think the piece is a success."




## Lymm Osteopathic Practice


Established 1979

**NEW ONLINE BOOKING SYSTEM**

**[www.lymmosteopathicpractice.co.uk](http://www.lymmosteopathicpractice.co.uk)**



**SUZETTE PULMAN**  
N.D. M.R.N. D.O.  
Registered  
Naturopath & Osteopath




**DARREN HAYWARD**  
B.Sc. (Ost)  
Registered  
Osteopath

Registered with The General Osteopathic Council (G.O.Sc.)

**01925 752264**

The Rise, 16 Grammar School Road, Lymm WA13 0BQ



## because people are your thing!

We are always looking for people who really love dealing with people. You know, making everybody feel welcome even when they're grumpy, and sending them off with a cheery smile . . . that sound like you?

Then you could have a career driving buses to help get Warrington folk where they need to be, with Warrington's bus company still owned by Warrington Council.

If you have a bus licence then come and join us, however if you have a car licence, no worries! We will train you, to become an ace bus driver and member of our team.

Apply online at [bit.ly/WOBJobs](http://bit.ly/WOBJobs)





[warringtonsownbuses.co.uk](http://warringtonsownbuses.co.uk)





The Lakes Nursery and Pre-school



**2, 3 & 4 year funded places available**

Childcare from less than £10 a day if using universal or tax credits, or tax-free childcare.

Full-time, part-time and funded sessions available all year round or term time only.

Outstanding Ofsted, NDNA Quality Award and Healthy Food award

Located in Orford, just off Winwick Road

THE LAKES CENTRE, SANDY LANE, ORFORD, WA2 9HY  
WWW.THELAKESCENRE.CO.UK 01925 642812  
f @rosebankandlakescentre

# Hospital hosts fund-raising NHS birthday tea party

**WARRINGTON Hospital hosted a fund-raising tea party at the Pickering Arms, Thelwall for a delightful afternoon of tea and cakes in celebration of the NHS' 73rd birthday.**

The event was officially opened by the Mayor of Warrington, Cllr Maureen Creaghan, while the hospital's Chairman, Steve McGuirk, and MP for Warrington South, Andy Carter, kicked off the festivities with speeches thanking everyone for their continued support.

The traditional afternoon tea included classic finger sandwiches, cakes, scones and plenty of English tea. There was also a bottle tombola and two separate raffles where attendees had the chance to win a number of fabulous prizes.

Helen Higginson, Fundraising Manager of Warrington & Halton Hospitals' Charity, said: "Many thanks to all who supported the Pickering Arms event in celebration of our NHS' 73rd birthday – an event that was not just an afternoon tea party, but for many of the people attending, it was a chance to reconnect with friends and colleagues, making it an extra special event for all involved."

Despite a limited capacity, the event managed to raise over £1000 in total, with all proceeds going directly towards the recovery of staff and patients in the aftermath of the pandemic.

Helen also expressed her gratitude to the Pickering Arms for their generosity in hosting the event: "A huge thank you goes out to Jim and Christine of the Pickering Arms, who, with the support of their

hard-working and very professional staff, delivered this wonderful event."

The afternoon tea followed the national 'NHS Big Tea' event on Monday 5th July, organised by NHS Charities Together, which saw people from around the country 'raising a cuppa' to thank our NHS heroes for their tireless work helping everyone get through the pandemic.


People in the community were encouraged to organise their own 'Big Tea' parties and raise funds for their local hospitals, whether in person or virtually, or just take a 5-minute tea break and make a donation.

Numerous departments and wards across the Trust held their own tea parties, which brought endless smiles to patients' faces, many of whom have had limited contact with their loved ones due to the pandemic.


In the community, Sacred Heart Catholic Primary School in Warrington led the way in their 'Big Tea' celebrations, creating colourful signs with messages such as 'Happy Birthday and Thank You to our NHS' and heading out onto the school field to dance to music and play games. Hope Academy and Bridgewater High School also got involved in the celebrations by sharing their messages of thanks and hosting an inset day event for staff members.



(From L to R) Gary Skentelbery of Warrington Worldwide, WHH Chairman Steve McGuirk, Mayor of Warrington Cllr Maureen Creaghan, her Consort John Nunnery and MP Andy Carter.



## VEHICLE ADAPTATIONS



**10% extra discount throughout August on all Cycle Carriers**

## TOWING AND LEISURE

Cycle Carriers and Leisure Showroom  
(Cyclehouse, Warrington, WA2 7NS)  
Vehicle Adaptations and Towbar Showroom/Workshop  
(BAS, Hollins Green, WA3 6LJ)

**01925 640730**  
office@basnw.co.uk www.basnw.co.uk

## ANDY CARTER MP

WORKING HARD FOR WARRINGTON SOUTH

**Here to Help**

As your Member of Parliament I am here to help residents with any local or national concerns. I am absolutely committed to providing advice and support to all Warrington-South residents. So if you need help, please don't hesitate to get in touch.

*Andy*

**Contact Andy**

- 01925 231 267
- [andycarter.org.uk](http://andycarter.org.uk)
- [andy.carter.mp@parliament.uk](mailto:andy.carter.mp@parliament.uk)
- @MrAndy\_Carter
- AndyCarterWarringtonSouth

Warrington South Constituency Office  
1 Stafford Road, Warrington WA4 6RT





# NOW'S THE TIME...



...TO INVEST IN YOUR HEALTH AND WELLBEING  
...TO DISCOVER OUR SPACIOUS, SAFE SITES  
...TO ENJOY FLEXIBLE, AFFORDABLE FITNESS

**12 month Anytime Membership  
for £300 - Saving you £90**

- State-of-the-art gyms
- Swimming pools
- Free at home workouts
- Group fitness classes
- Racket sports
- Friendly, expert instructors

Join online: [www.livewirewarrington.co.uk/now21](http://www.livewirewarrington.co.uk/now21)  
or call into your local site with this advert

#### Terms & Conditions

- Offer applies to upfront Annual payments only
- Applies to Anytime and Daytime Select memberships
- New members only
- Standard membership terms & conditions apply
- Time limited offer – can be withdrawn at any time without prior notice

@yourLiveWire

Working in partnership with  
**WARRINGTON**  
Borough Council



**LiveWire**

[livewirewarrington.co.uk](http://livewirewarrington.co.uk)

# Warrington Mortgage Centre continues to expand

**WARRINGTON Mortgage Centre continues to expand across Warrington so they can support more local families navigate through an increasingly challenging mortgage market where property prices see a continued rise.**

In a time of uncertainty, local business Warrington Mortgage Centre has been able to offer expert mortgage advice to local residents and are able to continue their business expansion further throughout the town.

Mortgage Advisor, Sam Fox, speaking from their new offices on Bold Street, Warrington, said: "The

mortgage market has seen huge changes over the past 18 months. If we look back to last year, the world pretty much ground to a halt, every business and almost all our lifestyles had completely changed, nobody knew what to expect next."

"Mortgage lenders reduced their capacity to lend, interest rates had dropped but people could access

them due to small deposits and overall it became a complete mine field! Every day we faced new challenges.

"As restrictions have lifted, we've seen a growing number of local residents seeking professional mortgage advice to help them understand how they can buy their first, or next family home whilst navigating through various lockdown changes.

"We're humbled by the support we've been shown and as a result, we've over doubled in size as

a business adding 4 brand new mortgage advisers and a number of support staff to continue to deliver a stress-free homebuying process."

"Warrington, we thank you."

If you're from Warrington and are looking to understand the best ways to become mortgage-ready, then you can find Warrington Mortgage Centre at their shop on Honiton Way, Penketh or now on Bold Street just off Palmyra Square.

For more information visit: [www.warringtonmortgagecentre.co.uk](http://www.warringtonmortgagecentre.co.uk)



When it comes to award-winning PR, content and SEO, it's a...

**NO BRAINER**  
CREATIVE INTELLIGENCE

Twitter Facebook Instagram @nobraineragency  
Call: 01925 635599  
Email: [team@nobraineragency.co.uk](mailto:team@nobraineragency.co.uk)  
[www.nobraineragency.co.uk](http://www.nobraineragency.co.uk)



# Disappearing cranes

by John Laverick - Warrington & Co

**In these interesting times I have looked for a few things to keep me sane and give me comfort that things are OK? Or at least have the potential to return to normal. I know the Warrington Property Review was one of them and I know I have said this before but just like buses they seem to come along in threes. This time though it is tower cranes.**

We have been back to the office for restricted periods over the past few weeks, so you can imagine my unease when two of the three tower cranes that I could see from the office window and

had been giving me some measure of comfort, had disappeared. In the absence of any real research, tower cranes have long been a barometer of construction activity in a specific area and if you could



see a few on the skyline you knew that construction was happening and that investment was occurring.

One of them was over the new Youth Zone being constructed on Stadium Quarter and two of them were over the new residential development on the corner of John St and Winwick Street. The Youth Zone is progressing very well but the two that disappeared were over John St and assuming that no-one had stolen them, as they are difficult to steal, I feared the worst. That this was a very real and tangible symbol of the difficulties of bringing forward housing within Town Centres on brownfield land which is just magnified through the effects of Covid and material shortages and consequent increase in material prices.

However, as a place Warrington continues to attract great interest from developers who wish to develop on brownfield sites within the Town Centre and it seems that this is still the case with the John St development. Despite losing the main contractor to insolvency,

However, it seems that the cranes disappeared just because that stage of construction was completed and they were due to go. Just goes to show that what some of us have always used as indicators may not



John Laverick

01925 442 243

[www.warringtonandco.com](http://www.warringtonandco.com)

be very reliable and what you think may have been reliable in normal times no longer are as we enter a period where the effects of Covid are going to be felt more strongly and with more lasting effects than ever both for construction and business in general.

If you're really interested the cranes will be replaced with mastclimbers, and if you want to know what they do – well then you'll have to wait until next month. Or maybe it's just me and it's not that exciting, although they I believe that weirdly, they also come along in threes.

## Go-ahead for new Job Centre Plus to cope with demand arising from COVID

PLANNING chiefs at Warrington have given the go-ahead for a new Job Centre Plus in the town to help deal with unprecedented demand expected on the Benefits system arising from Covid-19.

A planning application submitted by the Department of Work and Pensions (DWP) last month – together with a request that it be dealt with as soon as possible – has been approved by Warrington Borough Council planners.

The application is for permission to change the use of parts of three floors at Tannery Court, in Tanners Lane, Warrington.

The parts of the building involved are currently vacant but have previously been used for offices.

The DWP believes here will be a significant demand for its services in the Warrington area.

But the new office is just one of a number of new "appointment only" Job Centres planned across the country.

The DWP application stated: "We are attempting to open the new offices as quickly as possible to ensure we are ready to help people when they need us."

"We hope you will assist us in accelerating the Planning Approval process to assist us in achieving this."

The new Job Centre Plus will occupy parts of the ground, first and second floors.



### Home Working & Huddle Spaces



**Video comms solutions for a fixed monthly subscription**

**SHARPLESGROUP**  
Print Management Solutions

0800 195 0955 | [info@sharplesgroup.com](mailto:info@sharplesgroup.com)

[sharplesgroup.com](http://sharplesgroup.com)

Tatton Court, Kingsland Grange, Warrington WA1 4RR



# Ingevity choose St Rocco's Hospice as

**St. Rocco's Hospice has been blown away by the level of support they receive from the local community and is delighted to have been chosen as Charity of the Year by Ingevity.**

In early June Ingevity donated an astounding \$30,000 (£21,159) towards patient care as part of their IngeviCares program, which aims to reinvest a portion of

revenue and time back into non-profit organisations like St. Rocco's Hospice.

The hospice was thrilled to welcome Steve Hulme, vice

president engineered polymers, and Clare Connolly, human resources assistant, from Ingevity UK to St. Rocco's to hand over the donation in person and to talk more about the partnership between the hospice and Ingevity.

"As a member of the IngeviCares Charity Committee, it has been

an absolute honour to make this donation to St. Rocco's Hospice as part of Ingevity's vision to be a positive influence in local communities," said Clare. "Having a personal connection to the hospice myself means that this donation is even more special, and I know firsthand how valued the

## Global honour for two Priestley students

TWO students from Priestley College in Warrington have received a global honour for outstanding achievements in a competition that recognises talent across the world.

Sophie Nunn and Khalisah Ali

received bronze certificates in the Science Learner of the Year category of the global BTEC Awards.

Priestley Principal James Gresty said: "Sophie and Khalisah should be so proud of what they have

achieved.

"What they both have shown is a determination to work hard and achieve their goals, which deserves to be recognised and I wish them well in whatever they go on to do next."

The BTEC Awards are an annual celebration of the outstanding achievements of learners, tutors, teachers, schools and colleges involved in the qualification.

Organisers said 2021 was 'an extra special year as we recognise the exceptional resilience of learners and teachers who have achieved, despite the challenges of studying and delivering, outstanding learning during the pandemic.'

For Sophie, a former pupil at Bridgewater High, it was a successful end to four years at Priestley. She started on a Level 2 course and built up to Level 3.

Now she has secured a place at Worcester University studying Paramedic Science.

Before she leaves, however, she plans to secure a license that will allow her to drive ambulances with paramedics in the West Midlands.

"I've grown as a person at Priestley," said Sophie.

"If you would have spoken to my teachers when I started I don't think they would have thought I would be going to university, but with their support that's what they have helped me to achieve."

Both Priestley students were nominated for the award by their tutor Margaret Batten who believed they deserved recognition for their commitment to their studies.

For Khalisah, a former pupil at Great Sankey High, the plan is to study Adult Nursing at university.

At Priestley College she combined BTEC Applied Science with an OCR in Health and Social Care and an A-Level in History.

"It was a surprise to receive the certificate, especially as it is a global award," she said.



Sophie Nunn and Khalisah Ali with Principal James Gresty and tutor Margaret Batten.



**Saturday**  
**11th September 2021** Arley Hall and Gardens

**Starting at 6pm**  
**Dogs welcome on a lead**



To register and fundraise online visit  
**[www.stroccos.org.uk](http://www.stroccos.org.uk)**

Registered Charity NO. 511992



# Charity of the Year

money raised will be in supporting patient care."

Ingevity's support doesn't end at this donation though, as they will be the headline sponsor at the Strictly St. Rocco's event, which is being held on the 12th December 2021.

Strictly St. Rocco's is an annual dancing event that is now in its 7th year held at the Mere Golf Resort and Spa in Knutsford. This sequin-filled fundraiser pairs eight amateur dancers with eight professional dancers from Cadman's Dance School in Sale where they receive 6 dance lessons to learn a routine. The couples will compete on the night for the coveted Strictly St.

Rocco's Glitterball Trophy; with the winner being determined by a panel of judges and votes cast from the audience.

"We are so grateful for this wonderful donation and the support shown by Ingevity," said Nicola Henshaw, Senior Relationships Fundraiser at St. Rocco's. "The money raised means that the hospice can continue to provide high-quality palliative care to the people in Warrington who need us most and we would like to say a huge thank you to all of the team for their generosity. We are looking forward to what is hopefully a long partnership with Ingevity."



## Professional tree services

**Free Quote**

- Domestic
- Commercial
- Site Clearance
- Vegetation management
- Stump grinding
- Re-planting
- £10m public liability insurance

**Beechwood Industries**  
www.beechwoodindustries.co.uk

For more information, please call us on **01925 860544**

CP CS   Citib   SECC   Constructionline   City & Guilds NPTC Qualified   CHAS

# AUTUMN fruit festival

29<sup>TH</sup> & 30<sup>TH</sup> AUGUST

FRUIT TREES AND SHRUBS

NEW AUTUMN PLANTS

LOCAL PRODUCE

LIVE MUSIC

LICENSED BAR

WOOD FIRED PIZZA

HOT DRINKS

**PRIMROSE HILL**  
NURSERIES  
Est. 1935

**GROWN IN CHESHIRE**

WARRINGTON ROAD, HIGH LEGH, KNUTSFORD, CHESHIRE WA16 0SQ.



# Branches Furniture store relocates to new purpose designed store

**AFTER 20 “amazing” years based on Wilderspool Causeway, Branches of Warrington has relocated their showroom to a bright new two-floor store at Lineva House, Milner Street, Warrington – next to the Royal Mail sorting office.**

The new modern store showcases Branches’ extensive range of beautiful, contemporary dining, living, bedroom and home office solid wood furniture as well as the stylish home accessories, mirrors and occasional pieces they have become renowned for also.

As a dedicated family business, the team have focused on providing a customer experience with many personal touches – a unique home delivery service that includes assembling (where necessary) and aligning and placing in the room of choice. There is also always a knowledgeable member of the team close at hand, both in-store and online, to advise and assist customers in choosing the right furniture as well as offering continued support for the ongoing care of products long after they have been purchased.

Since 1994, the retail store has supplied quality wood furniture to

all areas of Warrington, Cheshire and beyond. The family business has navigated challenging economic trading times the biggest being the Covid-19 pandemic; they are proud to be the only remaining local family furniture store specialising in the latest trends of solid wood and painted furniture for every room in the home.

Branches co-owner Howard Ashwood, commented: “Myself, my son Simon and the Branches team are delighted to announce our new store location on the fringe of the town centre. This is almost like completing a full circle as the business first started, as Durham Pine, at premises on the corner of Sankey Street and Leigh Street, where we traded for just over 7 years before moving to Wilderspool Causeway.

“We look forward to warmly welcoming everyone to our bright new, airy showroom where we will

display and supply an extensive choice of stylish and affordable, high-quality furniture ranges for everyone.

As Branches enters a new exciting chapter in the company’s growth, the family would like to reassure all existing and future customers that they will continue to offer a unique range of services

that have proven to be so popular over the years. The new store will be open daily 10.00am until 5pm and 11pm – 4pm on Sundays and Bank holidays.

Please visit the Branches website for latest exciting new ranges and offers plus updates and opening times [www.branchesofwarrington.co.uk](http://www.branchesofwarrington.co.uk)



## Warburton Toll Bridge investment plan sparks calls for Public Inquiry

PLANS to invest £6.5m on the historic Warburton Toll Bridge and increase tolls by more than 700 percent has sparked calls for a public inquiry to examine the proposals.

The Conservative Group on Warrington Borough Council has called for a public inquiry following Peel Ports’ proposal that some tolls need to increase by over 700 percent on the Warburton-Rixton Bridge over the Manchester Ship Canal.

Peel Ports have launched a month-long consultation on a so-called Sustainable Investment Plan for the Bridge.

A total of £6.5m is to be invested in the Toll Bridge between Rixton and Warburton by The Manchester Ship Canal Company, which owns and operates the bridge, who have published an outline of upgrades to the approach roads, footpaths and tolling system.

While welcoming Peel Ports’ belated proposals to bring the bridge into the 21st Century by introducing a free flow tolling system and upgrading approach roads, the Conservative Group has also welcomed the proposed long-term investment in the structure of the bridge and automated measures to help control vehicle weights, heights, widths and speed.

But given Peel Ports’ unacceptable proposal that many motorists should bear toll increases of over 700 percent, the Conservative Group has called for a Public Inquiry to look at the long term future of the bridge, potentially without any tolls for motorists. For instance, an Inquiry could look at future funding coming from canal users rather than motorists.

Conservative Group Leader and Lymm Councillor, Kath Buckley, said “We welcome Peel Ports’ proposals

for upgrades to the bridge and its approach roads. They will improve traffic flow, restrict unsuitable vehicles and ensure the structure of the bridge is maintained for the long term.

“However, we strongly oppose Peel Ports’ suggestion that motorists should bear toll increases of over 700 percent.

“A Public Inquiry should look at other options for funding including from Peel Ports themselves from their Ship Canal business.

“After long delays, I also urge Peel Ports to progress the long-awaited maintenance of the three swing bridges at Latchford, Stockton Heath and on Chester Road,” added Cllr Buckley.

Warrington Borough Council has also opposed any increase in tolls.

The council’s Cabinet Member for transportation, highways and public realm, Cllr Hans Mundry, said: “We acknowledge that a significant upgrade of Warburton & Rixton Toll Bridge, to bring it into the 21st century, has been needed for some time. At the same time, it’s clear that the cash only, toll booth payment method needs to be updated. It is an archaic system which causes queues and delays and brings major frustration to many, many motorists.

“Any proposals to invest in the future of the bridge are to be welcomed. However, it is completely unacceptable that motorists should have to bear the brunt of these costs. We are extremely concerned by these toll increase proposals, which could see bridge users paying up to eight times more per trip than the current charge.

“Some years ago, the government committed to free tolls for local residents who regularly use the Mersey Gateway bridge

– now we find that potentially local residents will have to also pay an astronomical toll to cross the Warburton bridge.

“This is a substantial increase, which would have a real financial impact on motorists, particularly those who need to use the bridge regularly to get to work or visit family. We absolutely cannot support this, and that’s why we are writing to Peel Ports to state our strong opposition, and to urge them to reconsider their proposals. We urge you to also share your views and concerns.”

A Manchester Ship Canal Company Spokesperson said: “The public consultation on the proposed upgrades to the Rixton & Warburton Toll Bridge, was instigated as a non-statutory consultation, which we voluntarily launched.

“We understand the importance of the bridge to the local community and motorists and we wanted to provide an opportunity to share our plans to futureproof the bridge, as well as secure feedback from key stakeholders.

“We recognise the bridge is in need of extensive repair work, as well as renovations, which will ultimately provide a modern crossing for road users, improving

reliability and cutting journey times.

“After liaising with both Warrington Borough Council and Trafford Council, we recognise that a toll increase is needed to safeguard the future of the bridge. We will present our plans to the Department for Transport, who have confirmed a requirement that we will need to proceed via the statutory Transport & Works Act Order (TWAO) procedures.

“The toll increase will cover a comprehensive package of works in respect of the toll bridge including upgrading access roads and the installation of a free-flow tolling system, removing the need for toll booth collection and reducing delays.

“The new toll will provide the most sustainable way of funding the improvement required, as well as safeguard against future repair and maintenance work – no action is not a sustainable way forward.”

Written comments should be submitted no later than Friday 20th August via email to: [warburtontollbridge@peelports.com](mailto:warburtontollbridge@peelports.com)

MSCC’s Sustainable Investment Plan for Rixton and Warburton Toll Bridge can be viewed at <https://www.warburtontollbridge.co.uk/>





# Check out Branches New Store!

**Introductory Offers Continue - Save 30% OFF RRP**



**Unbeatable Choice & Fantastic Savings – don't miss out !**



**branches**  
The home of beautiful wood furniture

Lineva House, Milner Street,  
Warrington WA5 1AD.

Open: Mon- Sat 10.00 – 5.00pm  
Sun & Bank Holidays 11.00 – 4.00pm

**Tel: 01925 241869**

[www.branchesofwarrington.co.uk](http://www.branchesofwarrington.co.uk)

www.08.21

## Dementia Care at its Best

As a dementia specialist, Belong villages and services have a proven track record in promoting wellbeing and quality of life for people living with dementia.

At **Belong Warrington** we see the person, not the dementia, and tailor our support to respond to individual needs.



All photographs taken prior to March 2020

**Small households** for 24-hour support ensure a homely environment

**Life stories** are gathered, ensuring continuity, understanding and wellbeing

**Specialist training** means colleagues are alert to residents' changing needs

**Free Admiral Nurse service** provides specialist dementia support to family

**Belong Companions** work in partnership with the people we support, as well as their families

**Safe visiting spaces**, with robust infection and control measures in place

**Active and independent lifestyles** are promoted within a vibrant community

**Relative's Gateway** and use of various technology to support families to keep in touch

Inspected and rated

**Good**



For further information about our approach to dementia or about moving into a Belong village at this time, please call one of our friendly team.

**01925 593 800** [enquiries@belong.org.uk](mailto:enquiries@belong.org.uk) [www.belong.org.uk](http://www.belong.org.uk)

Belong Warrington | Loushers Lane, Warrington, Cheshire WA4 6RX

Dementia expertise | 24-hour support | Residential care | Nursing care | Short stays | Home care | Apartments







## MBM Capital

t: 0345 680 1895  
e: [nigel.garner@moorebizmgt.co.uk](mailto:nigel.garner@moorebizmgt.co.uk)  
w: [www.moorebizmgt.co.uk](http://www.moorebizmgt.co.uk)

### EV Charging Station Leasing

By Nigel Garner

As I go around my daily business, I am seeing more and more Electric Vehicles (EV) on the road which is good for the climate. I do feel a little guilty as I troll around in my diesel powered car although, in my defence, I do drive it in the Ecological mode so it's not all bad?!



We are starting to see more installations of EV charging points in supermarkets, hotels etc which is good considering the reported mileage ranges of EV's compared to more traditional powered vehicles.

As a business owner may be its time to consider switching our fleet to EV's; its eco-friendly, the EV's are reliable and with many miles done on our behalf in a reasonably small radius, makes good sense. But, what happens when our drivers return home, how do they charge their EV? Plug it into an extension lead and dim the lights in the house whilst they charge the car up again? That doesn't sound good; so, an EV charging point at home would be the answer. What does that cost?

There are government incentives available but these are minimal so what other options are there?

Leasing is the answer. By spreading the cost over 3 years (other terms are available) enables businesses to put their capital to more profitable use in the business whilst ensuring they are supporting the climate. From as little as £9.00 per week (over 36 months) business' can acquire state of the art charging stations that provide efficient charging of EV's without disrupting the family viewing of Coronation Street or other such televisual delights!

**The main benefits you can expect from EV Charging Leasing include:**

A cost-effective alternative to purchasing an asset that will depreciate;

The instalments are treated as an operating expense in your business so therefore are 100% tax deductible;

The payments are fixed throughout the life of your agreement so cashflow management is eased;

Leasing does not affect existing banking or credit lines;

Leasing provides your business with the flexibility to upgrade the equipment, acquire additional units or settle it at any time, so you remain in control.



**If you are considering EV for you or your business then call us on 0345 680 1895 to take advantage of leasing for your business, it makes sound economic and ecologic sense.**

MBM Capital is a Trading Style of Moore Business Management Limited  
Authorised and regulated by the FCA No. 787408

## Dad turns to pedal power after daughter's brain tumour diagnosis



**A dedicated dad from Warrington cycled from Land's End to John O'Groats to raise money for The Brain Tumour Charity after his daughter was diagnosed when she was studying at University.**

David Mitchell from Woolston clocked up the 950 miles between the two extremities in the UK. He battled through wet and hot weather conditions throughout his journey, with a short break at home to celebrate his 60th birthday with his family.

He has already smashed his fundraising target of £950 – which was £1 for each mile – and has so far raised around £2200 for the Charity, which is the world's leading brain tumour charity and the largest dedicated funder of research into brain tumours globally.

David took on the challenge with his friend Mike after his daughter, Emma, was diagnosed with a low-grade trigeminal schwannoma in 2015 when she was just 21-years-old. She had been having symptoms including pins and needles down one side of her face, headaches and she also developed a squint for months before she was accurately diagnosed.

Unbeknown to the family at the time, Emma had many of the classic symptoms of a brain tumour as highlighted by The Brain Tumour Charity's Headsmart campaign which raises awareness of the signs of brain tumours amongst children and young adults.

David said: "The first few days of cycling were incredibly challenging with lots of long hills over many miles in the mixed weather which we have been having – alongside maintenance issues with the bikes too. Yet the scenery is fantastic and I know that Emma is my real motivation for doing this. Emma, mum Rachel and myself are 'Team Emma' and we all have different ways and skills of supporting our daughter – I have the legs to do this so that's what I will be doing!"

"The Brain Tumour Charity desperately needs support so that the organisation can be there and ready to support people like us when they get the life-changing diagnosis of a brain tumour."

Emma took a year off her degree in Psychology at Durham University to have surgery to remove the tumour followed by radiotherapy. The family including Emma's two siblings,

Rhona and Bryn, did all they could to support Emma and she was able to return to University to gain her 2:1 degree qualification.

Emma first heard about The Brain Tumour Charity a couple of years after her diagnosis when she was searching online for help and information. Since then, the family have attended events run by the Charity, mum Rachel has used the closed Facebook group for carers and Emma is also a Young Ambassador for the Charity to help and support young people who are affected by a brain tumour diagnosis.

Emma said: "I am so proud of my dad and all he is doing to support The Brain Tumour Charity. My diagnosis was a very lonely and isolating experience and I really struggled to find my feet again. But, The Brain Tumour Charity changed my life for the better. Being a Young Ambassador for The Brain Tumour Charity has been a fantastic experience. This role is now coming to an end but I have met so many lovely and inspiring people along the way."

Life after Emma's diagnosis and treatment did not go back to 'normal' as the tumour continues to have a long-term impact on her life. Emma has ongoing side-effects including pain, chronic dry eye, cognitive difficulties, fatigue, lack of sensation on one side of her face, low self-esteem and anxiety. Regular scans to monitor her condition have also suggested that the tumour is slowly growing and that she may need surgery again in the future.

Last year was a difficult year for Emma and her family. Her recurring eye problems meant numerous trips to St Paul's Eye Hospital in Liverpool or Warrington General Hospital for investigations and treatment. She uses various ointments and drops several times a day to treat it and periodically has to wear an eye patch, including when she is asleep. There are also concerns about the long-term impact on her sight.

Donations for David's fundraising can be made by visiting: [www.justgiving.com/fundraising/david-mitchell-lejog](http://www.justgiving.com/fundraising/david-mitchell-lejog) For more information visit [thebraintumourcharity.org](http://thebraintumourcharity.org)



# FDR Law acquired by leading law firm Taylor Rose MW as part of expansion plans

**WARRINGTON-based FDR Law has been acquired by leading consumer law firm Taylor Rose MW, as it targets significant expansion in the North-West of England.**

The acquisition is the first stage in the top-75 firm's strategy to develop its presence beyond its South-East heartland and will also provide impetus for the growth of its consultant solicitor operation in the region.

FDR Law – formerly known as Forshaws Davies Ridgway – can trace its roots back 250 years and offers a broad range of private client and business law services across the North-West. It has five partners among 24 qualified lawyers, and 55 people in total. FDR Law will retain its brand and management team.

Taylor Rose MW is now a £70m business with over 1,000 people following this acquisition and McMillan Williams last year, split between 31 offices around the country and its consultancy proposition. The latter gives lawyers the freedom and flexibility to work how, when and where they want but supported by Taylor Rose MW's infrastructure – including using the offices.

The aim is to grow the scale and scope of FDR's operations across the region, through further mergers and acquisitions, developing areas of practice – in particular conveyancing, where Taylor Rose MW is a top-three player – and investing heavily in

business development.

Taylor Rose MW's offices are concentrated in Southern England, and particularly the South-East, although it does have offices in Manchester and Workington, Cumbria.

Adrian Jaggard, CEO of Taylor Rose MW, says: "FDR Law has a strong local and regional presence with a respected brand and experienced solicitors. It provides a perfect foundation for our ambitions to grow along the M62 corridor as we build a national network to support both our traditional law firm operation and our fast-growing consultancy business."

"After the successful integration of McMillan Williams, we are now looking to make Taylor Rose MW an even more significant player in the consumer law market than it already is. The North-West has a heavy concentration of both lawyers and firms, and at a time when the market is changing, we offer something unique to those who want to find better ways to operate."

FDR partner Margaret Evans says: "We have made the decision to join the Taylor Rose MW group from a position of strength but also in recognition that the legal market is consolidating.

"We can see significant opportunities to grow our business with the support, know-how and muscle that Taylor Rose MW brings, and also provide a home to the growing band of lawyers who are looking to practice as consultants but without the hassle of having to set up their own firms."

Taylor Rose MW is unique in running such a large consultancy operation within a more traditional practice structure. Consultants source

their own work but also receive referrals from Taylor Rose MW, and they play a significant role in helping the firm flex the resourcing it needs for different projects.

The consultancy arm, which opened in 2014, is on track to contribute 40% of the firm's revenue this year.

AIC Holdings Ltd is a holding company that owns Taylor Rose MW and has acquired FDR Law.

**Charlotte Nichols MP**  
Warrington North

If you live in Warrington North and have an issue you need help with or would like to book a surgery appointment, please get in touch.

**0207 219 3000**

[CharlotteNicholsMP.com](http://CharlotteNicholsMP.com)

[charlotte.nichols.mp@parliament.uk](mailto:charlotte.nichols.mp@parliament.uk)

[charlotte2153](https://twitter.com/charlotte2153) [CharlotteNicholsMP](https://facebook.com/CharlotteNicholsMP)

Promoted by Charlotte Nichols at Orford Jubilee Neighbourhood Hub,  
Jubilee Way, Orford, Warrington, WA2 8HE.





Commercial • Commercial Property • Litigation  
Employment • Wills • Trusts • Probate  
Personal Injury • Conveyancing • Crime • Family & Divorce

**01925 231000**  
**info@fdrlaw.co.uk**

Serving Warrington and surrounding areas

[www.fdrlaw.co.uk](http://www.fdrlaw.co.uk)





# Open again... At last!



## The Evolution of the RAF Burtonwood Heritage Centre (Part 6)

By Heritage Centre manager John Cotterill



**The 26th of June, saw the first visitors to the Heritage Centre for over 15, long, covid-restricted months and it must be said, it was fantastic to be able to welcome guests back to the centre.**

The Heritage Centre team, which is largely comprised of volunteers, have worked during stages of the pandemic, when restrictions allowed, to make sure that, when given the go-ahead to reopen, the Heritage Centre was bigger and better than it was before, so for guests to finally be able to experience and appreciate this, makes reopening all the more rewarding.

We have started to welcome back group visits, with the North West Hellcats paying us a visit on the 11th of July, with their convoy of WWII jeeps and trucks. It was great to see some old friends again and we are extremely thankful to them for visiting the Centre.

We are hoping to host many more group afternoons, not only for military vehicle groups, but

also classic car clubs, motorcycle clubs etc. If there is any interest in paying us a visit, or for any further information, please contact John on 07890 135 461.

We are likewise hoping to welcome more school groups to the Heritage Centre, following the summer holidays. Over the past few weeks, we have had over 120 school children, from local schools, spend their day with us (in their school bubbles, of course). They were given rotating presentations on: rationing, evacuees, the Berlin Airlift, life of the Home Front and how the war effected Warrington. For any school enquires, please contact John via email at [john.cotterill@rafburtonwood.co.uk](mailto:john.cotterill@rafburtonwood.co.uk)

We are currently in the planning stages of adding more buildings and bigger displays, as part of our on-going commitment to expand the visitor experience as much as possible and continuing to 'Keep the Memory Alive'.

Visiting times, through summer (until 31st August) will be:

Everyday — 14:30 - 17:00  
(Times may vary for the August Bank Holiday)

Hope to see you soon.





**STAY SAFE**  
**LEAVE SPACE**

# NEW OPENING HOURS

## SHOPPING

### MAIN MARKET & MEZZANINE

Monday-Saturday: 9am-5pm  
Every 2nd Sunday of the Month: 11am-4pm

## DINING & DRINKING

### COOKHOUSE

Monday-Wednesday: Between 9am & 7pm  
Thursday-Saturday: Between 9am & 10pm  
Sunday: Between 10am & 5pm



## Need IT Support at Home?

- Skilled and Friendly Technicians
- PC and Laptop Support
- Home Visit or Remote Dial-in
- Antivirus/Malware Check
- Unlimited Support Time



Ask for Ethan, Josh or Mark



Call our Team: 01925 251143  
 sales@aspire-computers.com | www.aspire-computers.com

## EXCHANGE YOUR GOLD AND SILVER FOR INSTANT CASH



All items of jewellery accepted

### Did you know...?

We accept silver jewellery, cutlery, tea sets, spoons, cigarette cases, candlesticks, trophies, trays, medals, coins and pocket watches.

**ROLEX WATCHES WANTED!  
 ANY CONDITION**

Open: Tuesday-Saturday: 10am - 5.30pm

1 London Road, Stockton Heath  
 (First floor entrance on Fairfield Road)

07544 486 621



GOLD & SILVER  
 BULLION DEALER

**20 YEARS** HAHN PLASTICS

Transform your garden with picket fencing that last a lifetime

- Eco-friendly
- Maintenance-free
- Weather-resistant
- Wood-like finish
- Drill, saw, screw & nail

Made from 100% Recycled Plastic

Visit [hahnplastics.com](http://hahnplastics.com) or call 0161 850 1965 to find out more.

**Beech WEB SERVICES**

VISIT OUR WEBSITE TO LEARN MORE:  
[www.beechwebservices.co.uk](http://www.beechwebservices.co.uk)

### Professional WordPress Websites

- Design and Development
- Website Maintenance
- FREE Website Healthchecks
- Graphic Design/Branding
- Google MyBusiness
- Google Ads

Get in touch with Roz or Sophy

01925 387040 | [info@beechwebservices.co.uk](mailto:info@beechwebservices.co.uk)

## FULLY FITTED ROLLER GARAGE DOORS

FROM **£895** \* WAS **£1,354** INC VAT

\* Offer Valid For Openings Up To 2.4m Wide & Inc:  
 2 Remote Controls, 55mm White Slats, Internal Manual Override

**WHATS INCLUDED:**

- ACOUSTIC & THERMAL INSULATION
- TWO REMOTE CONTROLS
- EXPERT MEASURING & FITTING
- 24 COLOURS AVAILABLE

Made To Measure... **ROLLER GARAGE DOORS**

Garolla can save a lot of space inside your garage. Rolls up vertically into a box. Takes only 8 inches of head-room! Opens vertically so you can park up close to the door. Remotely open/close the garage even from inside your car.

**CALL US TODAY**

Phone: **01925 205 302**  
 Mobile: **07537 149 128**

**GAROLLA** ROLLER SHUTTER DOORS  
[www.garolla.co.uk](http://www.garolla.co.uk)

## Michele & Co

Come to Michele & Co  
 Let's talk

### Would you like this to be your hair?

**Expert Wella Colourists**

01925 630714  
 4a Bold Street, Warrington



# Green light for 30th anniversary Disability Awareness Day (DAD) 2021

**THE 30th anniversary of Warrington Disability Awareness Day is set to go ahead on Sunday September 12.**

After closely monitoring updates on guidance relating to the COVID-19 pandemic the organising team behind the UK's largest voluntary led pan-disability exhibition have announced that the event at Walton Hall & Gardens will go ahead.

Event co-ordinator Dave Thompson MBE DL said: "The health and safety of our visitors, exhibitors and our team is always our number one priority. This is particularly important given the communities that DAD involves. After consulting with Public Health and our Local Authorities Events Safety Team to ensure we can follow national and local guidance, and we are pleased to confirm that our 30th annual event will go ahead on Sunday September 12.

Dave added, "We are very pleased to announce that disability education specialists Expanse Learning Group and the North West's water supplier United Utilities, are leading our list of sponsors for #DAD2021".

The aim of this year's event is to promote independent living through the theme "It's what disabled people can do that matters". #DAD2021 exhibitors will showcase solutions supporting independent living and mobility, with equipment, products, transport, employment, education, training, health and social care, leisure activities, alongside over 100 charities/support groups.

Most of this year's exhibitors will be housed in a huge tented village of marquees, which will be supported by a Sports Zone, a Centre Arena, a huge Performing Arts Marquee and a children's play area.

On the day, visitors can gain an insight into the help and support that is available locally, regionally and nationally. They can "have a go" at sports activities including basketball, fencing, boccia, football, rugby league, boxing, cricket, tennis and scuba diving in the on-site pool.

For those looking for a more relaxed day there will be a

fantastic line-up of talent in the Arts Marquee with some of the UK's leading disabled artists, or they can sit alongside the Centre Arena watching dog display teams, birds of prey, bands and sports demonstrations. Children can visit the funfair rides or accessible onsite zoo, crazy golf, high ropes and pitch and putt.

#DAD2021 will be the finale of a week of complimentary events. For more details of these events, please contact the DAD Admin team or visit [www.disabilityawarenessday.org.uk](http://www.disabilityawarenessday.org.uk)

Support services at #DAD2021 will include a free accessible Park and Ride service, free accessible busses from Warrington Town Centre, a free scooter and wheelchair loan service with trained enablers, British Sign

Language interpreters, additional unisex wheelchair-accessible toilets and over 100 trained stewards and helper's eager to make it a day to remember for everyone.

DAD continues to capture the imaginations of organisations around the UK and worldwide with events planned in Cameroon, India, Uganda and more. It is no wonder that DAD continues to be recognised as the world's largest voluntary led pan-disability independent living exhibition and family fun day covering physical, sensory and learning disabilities and mental health, and all ages.

For any enquiries, please contact Warrington Disability Partnership on 01925 240064, or contact Dave directly [davethompson@disabilitypartnership.org.uk](mailto:davethompson@disabilitypartnership.org.uk)



## 600 celebrate 50 years of the Church of the Ascension

MORE than 600 people attended Ascension Fest – a five-hour festival at The Church of the Ascension at Woolston, Warrington.

There were fairground rides, a makers market, games and entertainment from Community Objectives, Tanya from the Singing Kettle, young artists and Radio Warrington.

All the acts, businesses and organisations that took part were local and the vicar, Rev Rebecca said: "After such a challenging year for so many businesses it was good to be able to provide an opportunity to support our local business and creative community."

It was in January last year that the Church of the Ascension was awarded funding from The National Lottery Heritage Fund to repair the building and celebrate the 50th anniversary of the church with 18 months' worth of community events.

Then in March 2020 the whole world locked down and the plans were thrown into chaos.

Determined to celebrate the 50th anniversary of the church and its place in the local community, the team at The Ascension led by heritage engagement officer, Nickie

Blondon and pioneer team vicar, Rev Roberts, set about revising the plans to develop a series of online events and covid secure in-person events for the times when restrictions were eased.

Events have included a giant Lego model of the church made by Steve Guinness (who last year made the Golden Gates in Lego, and won Brickmasters in 2017), party bags, large scale photos on display outdoors, work with Fox Wood School, a community Christmas tree and light festival, and were rounded off with Ascension Fest.

Rev Rebecca said: "Despite all of the challenges of the project because of Covid, it has been a real success. Bringing people together is always a very special thing, but after the last year it was particularly special to see so many members of the local community out celebrating together in a safe way."

As the 50th anniversary celebrations draw to a close The Ascension hopes it can build on these events in the years to come and use the resources it has gained to further benefit the local community of Woolston, she added.



## Mobility & Independent Living

**The Disability Trading Company offer high quality, mobility & independent daily living aids, backed up by an extensive range of support services including information, advice and guidance.**

**WHAT WE OFFER:**

- Mobility Products, Sales, Service & Repairs
- Rise & Recline Chairs - Adjustable Beds - Stairlifts
- Contenance Products
- Daily Living Aids
- Battery Testing
- Fully Trained Staff
- Free assessments on site or at home
- Low prices and part exchange considered
- Interest free credit

**Don't just buy a product... buy the right product**

**MOBILITY & INDEPENDENT LIVING STORE**  
**Unit 6, Dewhurst Road, Birchwood, WA3 7PG**  
**Tel: 01925 251 079**  
**email: [mils@disabilitypartnership.org.uk](mailto:mils@disabilitypartnership.org.uk)**

Other branches at:  
**Centre for Independent Living**  
 Beaufort Street, Warrington WA5 1BA | 01925 240064  
**Mobility and Independent Living Store**  
 30 Sankey Street, Warrington, WA1 1TD | 01925 416624

Serving the Warrington community since 1991

for more information visit [w: disabilitytradingcompany.co.uk](http://w.disabilitytradingcompany.co.uk)



# £financially yours

By David Watkinson

## Self Employed Income Support Scheme No.5

The portal for claiming the fifth Self Employed Income Support Scheme (SEISS) grant will be open by the time you read this. The deadline for claiming the grant is 30 September 2021.

As with earlier grants the fifth grant is taxable income and in this instance should be included on the 2021-22 tax return for the claimant.

The rules for grant five are largely the same as those for grant four with the key exception of a new turnover test or, to be more exact, the "financial impact declaration test". This test is not to decide whether you can claim the fifth SEISS; it comes into play only once the person is satisfied that they meet the conditions for making a claim. Instead, it determines the amount of the grant that can be claimed.

### So what is the turnover test and how does it affect the grant claimable?

The turnover test is met when the person's turnover for the pandemic period is at least 30% less than turnover for the reference period. If the turnover test is met, the person may claim an amount equivalent to 80% of their average profit for three months, capped at a total of £7,500. Where, however, the turnover test is not met, the grant is reduced by more than half to 30% of their average profit for three months, capped

at £2,850.

This test may sound a fairly straightforward process. However, as is frequently the case, applying the rules may prove more difficult.

### Meaning of 'turnover'

'Turnover' means the takings, fees, sales and money earned by the business calculated in accordance with GAAP or the cash basis as appropriate. Importantly, turnover excludes any 'coronavirus support payments', including SEISS grants, Eat Out to Help Out payments and local authority or devolved administration grants.

### Meaning of the 'pandemic period'

The 'pandemic period' is the 12-month period beginning on a day falling within the period from 1 April 2020 and 6 April 2020; for example, the year to 31 March 2021 or, where more appropriate, the year to 5 April 2021.

### Meaning of the 'reference period'

The 'reference period' is the tax year 2019-20. However, the taxpayer can use 2018-19 where they feel this more accurately reflects their turnover for a typical 12-month period. HMRC has issued guidance which includes examples of where this may be appropriate such as:

- where the person was on carers' leave,
- was on long term sick leave or had a new child,
- they carried out reservist duties during the period, or
- they had lost a large contract.

The turnover to be taken into account is the turnover for the basis period for the relevant tax year. The basis period is the accounting period ending within the reference period. If the accounts are drawn up to 5th April each year then the turnover for 2019-20 is the year to 5th April 2020. However, if the accounts are drawn up to, say, 31st May each year then the turnover is that of the accounts for the year to 31st May 2019.

In all cases, the turnover can be found on the person's tax return for 2019-20 (or 2018-19, as appropriate), as follows:

- SA200 completed: box 3.6
- SA103S: completed: box 9
- SA103F completed: box 15
- SA800 completed: box 3.24 or 3.29 (for partnerships)

Where the basis period for the reference period exceeds 12 months, the turnover figure is apportioned on a just and reasonable basis (eg, on a time basis).

### Partnerships



Margaret Black and David Watkinson

Special rules apply in the case of partnerships.

Briefly, where the person does not carry on a trade outside of the partnership, turnover is the turnover of the partnership. The turnover of the partnership is adjusted by reference to the profit-sharing arrangements where:

- the person carried on another trade (whether alone or in a different partnership) in the reference period; or
- the person started to carry on a new trade in partnership in the pandemic period and also carried on another trade (again, whether alone or in partnership).

### What if I get it wrong?

Where a claim is made on the basis that the turnover test is met, and it is later found that this was not the case (based on the turnover figure reported in the person's 2020-21 tax return), the person must return the excess amount immediately (subject to a de-minimis amount of £100).

**WatkinsonBlack** have considerable experience in all areas of taxation and business services, including providing a very cost-effective payroll bureau service. **If you want to arrange a no-obligation initial meeting on any taxation or accounting matter then please contact us. Our office is now open during all normal office hours.** Please note that these ideas are intended to inform rather than advise and you should always obtain professional advice before taking any action.

**WatkinsonBlack**   
Accountants who care for Clients who matter

Contact David Watkinson or Margaret Black at: 1st Floor, 264 Manchester Road, Warrington

Tel: 01925 413210

or email: [info@warringtonaccountants.co.uk](mailto:info@warringtonaccountants.co.uk)

[www.watkinsonblack.co.uk](http://www.watkinsonblack.co.uk)



# Dream comes true for Wembley hat-trick hero

**A dream has come true for Warrington Ryland's Wembley hat-trick hero Elliott Nevitt after signing to become a full-time professional at Tranmere Rovers.**

Nevitt, who helped Rylands lift the FA Vase at Wembley, moves on with the best wishes of everyone at the club after completing a dream move into full-time professional football.

Nevitt had been linked with Crewe Alexandra, Port Vale and Accrington Stanley since his goal-scoring heroics at Wembley.

Tranmere boss Micky Mellon said: "Elliott is a signing that I want everybody to understand, since I was a player at Tranmere, we have always been very good at finding local talent that we were able to polish up, add fitness and present them with the opportunity to be a professional footballer."

The Liverpoolian joined Warrington Rylands last year having played for Burscough and City of Liverpool FC in the past.

Commenting on his dream move

Nevitt said: "I'm so happy and I'm made up to be honest. I found out after Wembley, there were a few others, but Tranmere was the main one for me.

"I've always wanted to be a pro all of my life so now it's just about working hard, getting as fit as the boys and doing what I can do.

"I've heard a lot about the fans, I've heard it means everything to the fans and they love hard work, so I'm going to do everything for them.

"Scoring a hat-trick at Wembley was the best feeling ever and I couldn't even describe it, and it was crazy.

"I've played in non-league for about five years now. I played for City of Liverpool, played for Warrington Rylands and before that I was in college, and I went to the Dallas Cup and played there twice."



Picture: Mark Percy.

## OFFICE/SPACE TO RENT

THE NEW MEDIA CENTRE, OLD ROAD, WARRINGTON, WA4 1AT



APPROXIMATELY 1,500 SQ FEET

- FULLY REFURBISHED
- OPEN PLAN OFFICE
- CLOSE TO TOWN CENTRE
- SEPARATE BOARDROOM
- AVAILABLE IMMEDIATELY
- RECEPTION AREA
- AIR CONDITIONED
- 24 HOUR ACCESS

**FOR MORE INFORMATION OR TO VIEW PLEASE CONTACT ALAN**

07710 241 865 or [alan@247print.net](mailto:alan@247print.net)

### CLASSIFIED

Call 01925 631592 to advertise

#### ACCOUNTANCY & SAGE TRAINING

**WHY TRY TO BE A PAYE EXPERT?** Watkinson Black can provide a cost effective payroll service, releasing you to concentrate on your business. **For further details please phone: 01925 413210 or e-mail: [info@warringtonaccountants.co.uk](mailto:info@warringtonaccountants.co.uk)** (5/21)

#### AIR CONDITIONING

**EXPERIENCED AND PROFESSIONAL** Warrington-based 4 Seasons are air conditioning specialists. We install, maintain and repair air conditioning for business and homes. FREE call outs and special offers. **Contact John & the team on 0330 400 5471 or enquiries@4sac.co.uk or [www.4sac.co.uk](http://www.4sac.co.uk)** (5/20)

#### CARPET CLEANING

**A1 STAINBUSTERS.** A Warrington company cleaning carpets, hard floors, Upholstery (Leather + fabric) and curtains in situ. FREE quotes for domestic and commercial. Approved carpet cleaners for Hancock and Woods for over 10 years. **Call John on 01925 852088 or 07765 314080** (18/21)

**SIMPLY THE BEST CARPET CLEAN YOU** will ever have. Cleaners UK Ltd. Est over 30yrs. Have your carpets & sofas beautifully deep cleaned leaving them fresh smelling & colour restored. Latest & best methods. Dry/steam. Leather cleaning, oriental rug specialist. Professional, reliable & affordable. **For more info call Neil Riley on 01925 264989/07831 336060 [www.cleaners-uk.net](http://www.cleaners-uk.net)** (15/21)

#### CLEANING SERVICES



- Spring Clean Specialists
- Presenting your home for sale
- Moving house
- After building work cleans

**01925 266834**  
... because you're worth it!

#### ELECTRICAL CONTRACTORS

**TRUST PROPERTY ELECTRICAL SERVICES.** NICEIC Part P Approved Contractor. All Electrical work undertaken. Inspection and testing and PAT testing. All work certified and guaranteed. **Call Tim on 07754409906 or 01925 601055** (5/21)

#### GARDEN FENCING

**TRANSFORM YOUR GARDEN THIS SUMMER.** HAHN Plastics introduces the eco-friendly and durable alternative to wood: Picket Fencing made from 100% recycled plastic. 20-year warranty, Rot-free, No treating needed, Weather-resistant, Maintenance-free. **Call 0161 850 1965 or visit [www.hahnplastics.com](http://www.hahnplastics.com)** (5/21)

#### VEHICLE SALES

**PARKVIEW CAR SALES**

**We buy and sell QUALITY CARS**

**Best price paid**

**Telephone Peter on 01925 575737 / 07957 545479**

23 Padgate Lane  
Padgate, Warrington  
Cheshire, WA1 3RS

#### MORTGAGES

**TALKING MORTGAGES - INDEPENDENT MORTGAGE ADVICE.** For local, impartial and professional advice on all aspects of mortgages contact **Darren Simpson 07708 975122** (5/21)

#### PAINTING & DECORATING

**BRUSH UP GIRLS.** Female Painter and Decorators covering Warrington and surrounding areas. Professional quality work assured. No job too small. Call today on **07554 486 626 or find us on Facebook** (5/21)

#### SEWING MACHINES

**J&P Sewing Machines**

New & Used Sewing Machines  
Overlockers, Embroidery Machines  
& Dressforms  
Servicing of all makes

**Tel: 01925 633831**  
**[www.jpsewingmachines.com](http://www.jpsewingmachines.com)**  
2 Suez Street, Warrington WA1 1EG

#### TYRES

**EVERGREEN** Centre of Excellence

**Express**  
Mobile Tyres

Local Family Business. Est 1997  
**01925 810000**  
**[www.expresstyres.co.uk](http://www.expresstyres.co.uk)**  
**Order Online Today!**

**Branded & Budget Tyres**  
Cars, Vans, 4x4's, Caravans  
Light Commercial  
& Performance Vehicles

**The tyre service that comes to you at home or your place of work**

**No Call Out Charge!**

**BRIDGESTONE MICHELIN**  
**GOODYEAR Continental**

**To advertise in the classified section from as little as £15+vat**

**Call us now on 01925 631592**



# Discover what's on offer at your local college!



Each September we see people of all ages joining our adult courses. With so many to choose from, why not see if there is something for you?

Often adult students join us as they would like to change careers but need to return to education to access their chosen field. Other times people are keen to learn new skills to help them in their current role, secure a promotion, or upskill themselves to strengthen their value to their employer.

Over the last 18 months we have all faced challenges and changes that we wouldn't have expected to come our way this time last year. So, in this rapidly changing world, the need to contribute additional skills to your CV has never been so important.

## Join us to study accredited qualifications in:

### Access to HE

Health Professionals, Health & Social Care Professions, Nursing & Midwifery and Social Sciences. Plus, we offer a Pre Access to HE Diploma.

### Higher Education

Art (Applied Art & Fine Art), Computing, Construction, Creative Media, Early Childhood Education & Care, Electrical & Electronic Engineering, General Engineering, Games Development, Graphic Design, Healthcare, Professional Dance Practises, Professional Theatre Practices, Public Services, Sport and Sport & Exercise Science.

### Professional Courses

Leadership & Management (ILM), Human Resources (CIPD), Accountancy (AAT), Digital Marketing, Counselling, Education & Training and Supported Teaching & Learning.

We also offer a number of online distance learning courses which can be studied in the workplace or from the comfort of your own home. These courses are great for filling those gaps in your knowledge or experience.

## SCHOOL LEAVERS You can still apply for September 2021!



With a huge range of courses and dedicated college bus routes throughout the region, Warrington & Vale Royal College is the perfect choice, whatever your career path.

**Don't worry if you haven't applied before GCSE results day on the 12<sup>th</sup> August!**

You can call in, speak to our tutors and enrol on the same day.

## What do our students say about us?

- 100%** believe that their opinions about their course are valued by college staff
- 99%** agree that tutors have high expectations of students and encourage them to work hard
- 98%** said they feel safe at college
- 98%** said they are happy on their course.

\*May 2021 student survey results.

**Apply now at [wvr.ac.uk/apply](http://wvr.ac.uk/apply)**



Warrington & Vale Royal College



## Looking to just learn something new for fun?

Short courses are designed to teach new skills in a fun and relaxed environment. You could pick up some culinary, floristry or hairdressing skills. Learn a new language ready for your next holiday, with introduction and advanced short courses in French, Italian and Spanish. Or if you have a keen eye for art perhaps you would like to learn some of the basics such as watercolours, drawing and sketching or ceramics?

View our summer course guide at: [wvr.ac.uk/summer](http://wvr.ac.uk/summer)

