

Lymm Life

Magazine

ISSUE 264 | JULY 2021

DELIVERED FREE TO 5000 HOMES



urban

BUILDING PROJECTS LTD

Extension &
Building Renovation
Specialists

Tel: 01925 730888

www.urbanbuildingprojects.co.uk

Christmas in May!

Page 5

Horn's

Airport Transfer
& Taxi Specialists

CALL MARTYN:
01925 751761

MOBILE: 07881 786250

hornscars@gmail.com



LYMM
PARISH
COUNCIL

Approved by Lymm Parish
Council as the official
magazine for Lymm

Regular news updates at www.lymm.life.co.uk

COURAGE - BRAVERY - DETERMINATION

Editor
Gary Skentelbery

Production
James Bryan

Advertising
James Balme
Telephone
01925 631592

Editorial
01925 623633

Email
info@lymmmlife.co.uk

Websites
www.lymmmlife.co.uk
www.culchethlife.com
www.frodshamlife.co.uk
www.warrington-worldwide.co.uk
www.warrington.tv

Address
New Media Centre
Old Road Warrington
WA4 1AT

Lymm Life is published monthly by Orbit News Ltd.

The contents of this magazine are fully protected by copyright and nothing may be reprinted or reproduced without prior permission of the publishers.

The publishers are not liable for any statement made or opinion expressed by third parties in this publication.

Printed by TwentyFourSeven

Editor's Comment



THESE notes were penned after Boris Johnson announced that the full easing on lockdown restrictions would be delayed until July 19, which could cast a cloud over some of the events being planned for Lymm Festival and Lymm Transport Day.

With some indoor restrictions remaining in place it will now be difficult for some of the planned events to take place - so please check online for the latest information and we will also update our social media channels once we know the full picture.

Hopefully, some of the events will still be able to take place as planned in a COVID secure environment.

Unfortunately, COVID cases have been rising rapidly in the Warrington area in recent weeks, including Lymm and while the vaccination programme appears to be working, keeping people out of

hospital, the number of new cases each week is now in the hundreds and some could end up in already busy hospitals, dealing with a backlog of other patients.

While the delay in lifting restrictions is hugely disappointing, especially for all those who have worked so hard on bringing us the Lymm Festival, it is better to be safe than sorry - as the last thing anyone wants is another full lockdown.

Meanwhile, consultation is now underway by the Boundary Commission on proposals to move Lymm & Thelwall into the Tatton constituency.

This is being done to even out

the number of constituents each MP represents.

It would appear though commonsense has gone out of the window, as if it goes ahead, we will have a situation whereby Lymm and Thelwall residents will be represented in parliament by the MP for Tatton, but still remain in the borough of Warrington for local elections and council services.

If anyone can explain to me how that would work when escalating local issues up the chain of command I would love to hear them.

It would also mean our current MP no longer lived in the constituency that elected him!

Feel free to make your views known to the Boundary Commission via www.bcereviews.org.uk



Tracey Turton

ARE YOU TIRED ALL THE TIME?

BOOK YOUR FREE 30 MINUTE DISCOVERY CALL
to find out more about a pioneering new approach
to recovering from Chronic and Post-viral Fatigue

01925 730123 | www.traceyturton.co.uk

N & J STANHOPE

Coal and Log Supplies

Best Quality Coal
Smokeless Fuel
Logs Supplied in Bags and Bulk
Caravan Storage
Open 6 Days. Closed Sunday

Broomedge Farm
Burford Lane, Lymm WA13 0SE

Tel: 752830
Mobile: 07979 785 421

Worried about the long term effects of lockdown, looking for support? Come and join our community



KEATE HOUSE

CARE HOME

OPEN for new Admissions - Virtual tours available

Now Available – Brand New dementia friendly en-suite garden view rooms, Plus recent extensive refurbishment to our day lounge, garden and the 'Keate Arms'








Dementia Care • Residential Care • Respite • Day Care

www.keatehouse.com
Call: 01925 752091 Email: enquiries@keatehouse.com
9 Brookfield Road, Lymm, Cheshire WA13 0QL








Losses of £250,000 during pandemic result in reduced hours at Lymm Leisure Centre

LOSSES of circa £250,000 at Lymm Leisure Centre during the COVID-19 pandemic has resulted in reduced hours for members.

While regrettable, Lymm High School Head Teacher Gwyn Williams says he has had no choice if he is to secure the future viability of the community facility attached to the school.

Local residents fear the changes to the leisure centre and pool timetables will severely restrict access to the community facilities.

In a letter to members Mr Williams wrote: "As you know, the easing of government restrictions means that we have recently been able to re-open the leisure centre, including the swimming pool.

Whilst this is good news overall, the continued need for Covid restrictions means that there is only a limited number of slots available and there has been very high demand for these. We appreciate that this is not ideal and ask for your understanding that this is something that is beyond our control. We join you in hoping that government rules will be relaxed again as soon as possible.

"You will also have noted that the new timetable includes a reduction in opening hours for the swimming pool and fitness suite. A few members have, understandably, expressed regret at this and have enquired as to whether or not these opening hours will be continuing. We are writing today to confirm that these will indeed be the opening hours for the foreseeable future.

"The reduction of hours is regrettable, and we do not underestimate the impact of this on certain members of our community; these decisions have not been taken lightly and certainly not without due regard for those most affected. However, the reality is that the financial situation is such that we have no other option if we are to

ensure that Lymm Leisure Centre remains a sustainable enterprise, able to continue to serve local people well into the future.

"Covid-19 has hit the Leisure Centre hard. We anticipate having lost something in the region of £250,000 by the end of this academic year and have already had to make significant changes in order to keep going. The school is unable to subsidise this loss – to do so would be in contravention of the school's funding agreement with the Department for Education, which states very clearly that school funding must only be spent for the benefit of students in the school. Without making these changes to opening hours, the Leisure Centre will not be able to repay this debt.

"Even before Covid, the economics of running a swimming pool meant we were making a significant loss during certain parts of the week (most obviously, early morning swims where customer numbers are low but staffing requirements are high). This, in turn, means that we cannot generate sufficient revenue to support longer-term capital investment.

"We have undertaken a detailed review over the past few months and are confident that the new model will ensure that we can manage costs and generate the revenues needed to avoid subsidy from the school and provide much-needed investment in the leisure centre facilities. Whilst not wishing to minimise the impact on those individuals most affected, we are also confident that the new model allows us to maintain provision at the times when the vast majority of members wish to use the centre.

"Overall, we are very pleased that, amidst all the current challenges, we have been able to

come up with a model that allows us to be able to continue to provide a very substantial offer to the local community for the long-term. This includes access to two artificial sports pitches, numerous good quality grass pitches, the sports hall, studio, fitness suite and an extensive programme of swimming lessons.

"We sincerely hope that you will continue to support us. However, we understand that the new opening hours might cause some members to re-evaluate your position. If you would like to cancel your membership, please email llc@lymmhigh.org.uk and we will ensure you receive a refund for the remaining period of your contract.

"We are also reducing our membership fees in light of the reduction in opening hours. Please note that we have not applied any inflationary increases in prices in either 2020 or 2021 despite rises in costs. It is our hope that people will choose to support us by only renewing under this new fee structure once their current term of membership expires, but we will be happy to reimburse you for the relevant proportion of the difference between the old and new fees for the remainder of your current term if you wish; please email llc@lymmhigh.org.uk if this is the case.

"While Covid restrictions remain in place, members continue to have

the option of freezing your existing membership and using 'pay as you go' in the meantime.

"We hope this letter provides some clarity, as well as some context for the changes we are making. Once again, we apologise to those members most affected by this but trust that people can see how hard we are working to maintain as broad an offer to the local community as possible, at very competitive prices. Given the challenging circumstances of the past fourteen months and the impact on leisure centres elsewhere, we are sure you will agree that being able to announce that we are confident we can emerge from the pandemic with a sustainable model for Lymm Leisure Centre well into the future is a very positive step for our community."

Sophies Soft Furnishings

Curtains • Roman Blinds
Cushions • Tiebacks • Poles
Tracks • Valances • Pelmetts

We design, make and fit to meet your exact requirements.

For free home visit or advice ring
Anne on 01925 754446

www.sophiessoftfurnishings.co.uk





Call us on: 01942 607250
www.elbfireplaces.co.uk
70 Twist Lane, Leigh, Lancashire WN7 4DP

Fire Surrounds, Stoves, Gas & Electric Fires

Established 30 YEARS

No need to change your carpet - made to measure fireplaces

Over 75 displays over 2 floors

Live wood burning stove on display

Is your conservatory too cold to use in Winter?
Why not install a stove?



Rosebank & Naturegarten

We are pleased that Naturegarten will be taking part in Lymm Open Gardens on the 4th July from 12:00 to 17:00—All welcome



We have great spaces and places for babies and children at Rosebank and Naturegarten.

Part time, full time sessions available for term time and all-year round

We are also taking bookings for new children and funded 2 and 3 year old places for September

THE ROSEBANK CENTRE & ROSEBANK NATUREGARTEN, PEPPER ST
WWW.RNGROUP.CO.UK 01925 320161
f @rosebankandlakescentres

What's On in conjunction with Lymm Parish Council



PLEASE CHECK ANY EVENTS BEFORE ATTENDING DUE TO COVID-19 RESTRICTIONS.

LYMM PARISH COUNCIL

Tuesday July 13th, 7:30pm Lymm Parish Hall
Check www.lymmparishcouncil.gov.uk for details.

LYMM THURSDAY EVENING BRIDGE CLUB

Lymm Village Hall every Thursday 7pm

MAPLE LODGE ART GROUP

Meet each Wednesday 9.00am - 11.30pm
Oughtrington Community Centre, Lymm
Details: 01925 755126

ROTARY CLUB OF LYMM

Meets at Statham Lodge on the 2nd and 4th Wednesday each month for a Fellowship and a Business meeting respectively.
Contact the Secretary 01925 758398

LOVING HEARTS & HANDS

Knitting for charity at Lymm Methodist Church, 2nd and 4th Thursday each month.
1.30pm - 3pm. Details: 01925 753298

MARKET LUNCHES

Eagle Brow Methodist Church
3rd Thursday in the month
Light lunches 12 noon till 2pm. All proceeds to Youth For Christ and YMCA Room at The Inn

GARDENING CLUB

Meet Third Wednesday of the month
Lymm Baptist Church, Higher Lane. 7.30pm
Visitors welcome. £2 includes tea and cake

LYMM FLORAL ART GROUP

Lymm Village Hall
Third Monday of the month (except August and December) at 7.30pm. Visitors most welcome. Contact: 07876 176501
lymmfloralart.org.uk

LYMM PHOTOGRAPHIC SOCIETY

Every 2nd and 4th Wednesday
(ex July & Aug), 7.30pm
Spread Eagle pub, Eagle Brow.
Details: www.lymmphotosoc.org.uk

LYMM WINE AND BEER CIRCLE

3rd Wednesday of the month, 8pm
The Spread Eagle Hotel
Details: 01925 756444

LYMM CONCERT BAND

Rehearsals every Thursday evening
United Reformed Church, 8pm.
Details: 01925 752934

LYMM WI

Every second Wednesday, 2-4pm at Lymm Youth and Community Centre. Visitors welcome.

LYMM BOOK CLUB

Second Thursday of the month 7.30pm,
Spread Eagle, Eagle Brow. Details 01925 752371

4LYMM VOLUNTARY ORGANISATION

Meet every 2nd Monday at 7.30pm in the Bridgewater Club, Whitbarrow Road.
All welcome. Tel 01925 756378 for details.

LYMM AND DISTRICT MIXED VOICE CHOIR

Every Wednesday 7.30 Lymm Methodist Church. Contact 01925 601664.
cafh@cstones.co.uk

PROBUS CLUB OF LYMM

A small, friendly social club for retired people.
Meets on second and fourth Tuesdays at 2:15pm.
Details: www.LymmProbus.club



**LYMM
PARISH
COUNCIL**

**Tuesday July 13th, 7:30pm
See parish council website
for details.**

Lymm Festival 2021: let's make Lymm live again!

FROM June 24 to July 4, Lymm Festival returns, subject to the latest Covid restrictions: indoors, outdoors and online, bringing live events back to Lymm with a safe and varied programme that has something for everyone.

There will be music, art, comedy, literature and even some science, as well as family fun, exhibitions and online events to bring the Festival into your home.

Don't miss this year's special guest, Eddie 'The Eagle' Edwards, who will be flying in to discuss his experiences as a downhill skier and as the subject of a major biographical film. There will also be a talk on 'The Physics of Star Wars', and the ever-popular annual comedy night.

For music, check out folk, blues and classical nights, each headlined by acclaimed performers and featuring a number of local acts. There is also an evening of musical comedy and even a special story concert for children.

Outdoors are returning favourites such as Historic Transport Day, Open Gardens and Scarecrow Trail, plus a Family Fun Day on the last weekend.

Inspired by the success of last year's online Festival, organisers are also offering several virtual events including a Q+A with award-winning local crime author Martin Edwards, an online

baking class, and several virtual exhibitions.

The Festival organising team has worked hard to create a programme that offers Lymm Festival's characteristic mix of music, comedy, literature and more, whilst still prioritising the health and safety of all involved. All events will adhere strictly to the government's COVID-19 guidance, and any cancelled shows will be fully refunded.

Tickets are available online or from the Festival's box office at the Village Hall, and there are lots of free events as well. With venues having reduced capacity this year, to allow for social distancing, tickets will go fast!

Find the full programme and box office hours at lymmfestival.org.uk, where you can also sign up to the newsletter to receive updates about new tickets going on sale if social distancing restrictions change.

Join the fun on social media by following @lymmFestival on Facebook, Twitter and Instagram, and don't forget to share your thoughts with the hashtag #LymmFest21

ANDY CARTER MP

WORKING HARD FOR **WARRINGTON SOUTH**

Here to Help

As your Member of Parliament I am here to help residents with any local or national concerns. I am absolutely committed to providing advice and support to all Warrington South residents. So if you need help, please don't hesitate to get in touch.

Andy

Contact Andy

- 01925 231 267
- andy@andycarter.org.uk
- andy.carter@parliament.uk
- @MyAndy_Carter
- AndyCarterWarringtonSouth@parliament.uk

Warrington South Constituency Office
1 Stafford Road, Warrington WA4 6RT

G P BROADSMITH & SON

POOL FARM, LYMM

Bottled on the Farm from our Free Range Cows

**DELICIOUS MILK FROM OUR HAPPY COWS
DELIVERED TO YOUR DOOR!**

Here at Pool Farm we take good care of our free-range dairy cows. They produce fresh, quality milk which is bottled in our own farm dairy and delivered to local doorsteps. We also stock a range of associated products such as eggs and potatoes, all sourced from local farms.

Call 757655 or email milk@broadsmith.com to discuss early morning deliveries to your doorstep and follow us on Facebook or Instagram at @broadsmiths where you can keep up to date with life on the farm!

G P BROADSMITH & SON
POOL FARM, POOL LANE,
STATHAM, LYMM, WA13 9BW
TEL: 01925 757655
YOUR LOCAL DAIRY Est. 1932

New youth theatre group launched in Lymm



MINERVA Arts, who run youth theatre across Cheshire, have launched a new group at Lymm.

They are starting face-to-face working after keeping going with online workshops across the county during lockdown, helping to keep young people's spirits up during uncertain times.

Not only did Minerva maintain their original groups but they also started two new ones – at Lymm and Middlewich.

They now run six groups.

All sessions are built around the ideas of young people; whether they want to be orphans who run away to become pirates or people trying to find their way out of an all too real escape room scenario, Minerva are dedicated to making young people's imaginations come to life.

Mandy Roscoe, youth theatre manager said "Growing up with a disabled parent there were not always opportunities for me to focus on purely my own needs. I joined youth theatre when I was six years old and never looked back. Youth

theatre built up my self esteem and social skills.

"Youth theatre allowed me to become the confident and independent adult I am today. I made friendships for life and at 34 years old still maintain those relationships now. I actually performed many times with the founder of Minerva Arts!"

Minerva Youth Theatre helps to promote positive mental health allowing young people to forge supportive friendships. Members create new and contemporary performances. They are provided in a safe space to explore how the arts can help them make an impact on their community with the support of experienced and enthusiastic staff.

Mandy added: "Times have been tough for everyone affected by Covid but I am thrilled about our restart. I can't wait to push the tables back in my venue and start making some Minerva Magic!" More information can be found on the website www.minervarts.com or by contacting youththeatre@minervarts.com

Lymm family celebrate Christmas in May!

A Lymm family got into the Christmas spirit in May celebrating with family, turkey and all the trimmings now that the lockdown restrictions are being lifted.

Lymm Mum Jen Murphy said, "When infection numbers started to rise in December, we realised it wasn't safe for us to travel to see each other over the festive period so we made other arrangements for the meal. We couldn't possibly eat all of the food we had planned as a family of four so we wrapped up the Christmas cake, put the fruit liqueurs back in the cupboard and froze the turkey until we could all be together again."

"We had hoped to keep the Christmas tree going strong in a bucket in the garden, but I am afraid it is looking a bit worse for

wear. Originally we planned to get together at Easter – and the tree survived that long – but when the restrictions were extended, Chr-Easter was cancelled. Lymm celebrates the May Queen festival in June, so why not Christmas in May. We're calling it Whit-mas."

The celebration has been such a success, they're thinking of keeping it as a family tradition. With the shops open in case of emergencies, and no need to book a table in a beer garden for a post-meal drink during the Christmas afternoon stroll, it might catch on!



Apprenticeship Vacancies

- ▶ Landscape Operative and Grounds Maintenance Operative apprenticeship vacancies
- ▶ Earn while you learn - weekly starting salary of £250 (£13,000 per annum)
- ▶ Starting September 2021
- ▶ In conjunction with Reaseheath College



Beechwood Industries

Application closing date 27th July

To apply please send a CV to info@beechwoodindustries.co.uk

For more information please call 01925 860544

Warrington Road, High Legh, Knutsford, Cheshire WA16 0SQ.

Summer bedding plants and hanging baskets



GROWN IN CHESHIRE

Now in stock



PRIMROSE HILL NURSERIES

OPEN TO THE PUBLIC AND TRADE: MON-SAT 8.30am-5pm. SUN 10am-4pm.
WARRINGTON ROAD, HIGH LEGH, KNUTSFORD, CHESHIRE WA16 0SQ. 01925 752635



Exciting solar farm project starts community consultation

All too often in Lymm, matters of development focus on housing, road maintenance and parking issues - but now a positive and exciting opportunity has arisen to pursue a project that could see a community solar farm developed in the village.

Lymm's residents are being invited to a public consultation event to understand and offer feedback on the plans for this renewable energy project before the proposals move forward.

Lymm Community Energy (LCE) has secured funding from the Rural Community Energy Fund to assess the feasibility of constructing and operating a 5MW solar farm on land owned by Wildersmoor Hall Farm on Whiteeggs Lane, Lymm.

For anyone unfamiliar with LCE, the organisation was created in 2014 and is a not-for-profit Community Benefit Society established to enable local people and organisations to invest in renewable energy and energy efficiency installations. Notable achievements include putting solar panels on the roofs of the four Lymm village primary schools which since installation has saved 135 tonnes of CO2e emissions and generated 500,000 kWh - enough clean electricity to power 135 homes for a year.

When asked how the solar farm proposals have arisen, LCE Director, Richard Pearce, commented,

"Following the success of the primary school solar panel installations, our local shareholders have been encouraging us to consider further projects to benefit the local community".

"The proposed solar farm meets all our objectives as a Community Benefit Society and our Community Benefit Fund would use financial surpluses from the solar farm to support local community organisations and projects".

LCE recently engaged the services of local company Fichtner Consulting Engineers, who have extensive experience of solar farms in the UK. A technical feasibility study has been completed and concludes that the site is suitable for a solar farm development and that the land available is more than sufficient for the scale of project being considered.

The development would follow agricultural good practice guidelines for solar farms, including using the land for grazing and encouraging biodiversity.

The potential to supply local residents, businesses and community facilities with electricity from the solar farm is also being investigated during the feasibility study together with the scope for battery storage.

Local support and consultation are an important component of the project feasibility report. LCE are running an initial information event on 26th and 27th June, 10am-4pm, at Lymm Hub (Lymm Library, Sanctuary Hub and Business Centre). The public is invited to

drop in to ask questions and make comments about the development. The solar farm public consultation will then continue beyond this date via local media sources and direct communication with contacts in the areas that neighbour the proposed site.

The LCE solar farm project is one of several information stands available to visit at the June event. The event is run by LEAF, who themselves will launch as a

new umbrella to bring together a number of local groups focused on environmental themes. Details about the June events can be found in the article Lymm Life featured last month.

For more details about LCE and the solar farm project, contact Richard Pearce on 07976 352914, email info@lowcarbonlymm.org.uk, or visit <https://lowcarbonlymm.org.uk/>



Earn while you learn at Beechwood Industries

BEECHWOOD Industries in High Legh near Lymm has launched their 2021 Apprenticeship programme and have four Apprentice vacancies starting in September.

The apprenticeships offer the chance to earn while you learn with a weekly salary of £250 per week.

In addition:

- You get to earn a wage whilst gaining a nationally recognised qualification - a Level 2 in Horticulture and Landscape Operative standard

- You'll gain hands on training and real working life experience

- You won't rack up any student finance debts

- You'll be in the right place to build a successful career in the landscaping and horticulture industry

Two of the vacancies are in the Grounds Maintenance team and two are in the Landscape team. Both positions are being offered in conjunction with Reaseheath College where the apprentices will attend one day per week in term time to study for a Level 2 in Horticulture and Landscape Operative standard. Beechwood's Director, Adam Halford, is a former student of Reaseheath himself and knows first hand the quality of teaching at the college.

As a Grounds Maintenance Operative Apprentice your typical working day could include grass

cutting using various types of machinery, grass strimming, hedge and shrub pruning, leaf collecting and jet washing.

For the Horticulture Landscape Operative Apprentice you'll gain experience in planting shrubs and trees, preparing ground for turfing, seeding and planting, manual laying of turf and using small plant machinery such as rotivators, tractors etc.

Beechwood Industries are a multi-disciplined, young and rapidly expanding company who appreciate the value of their employees. They understand that creating a positive and enjoyable working environment directly contributes to the level of service they provide to their clients. Their Apprenticeship scheme has been developed with these principles in mind. The weekly salary on

offer is higher than the apprentice minimum wage in recognition of the contribution that the apprentices will make to the business.

To apply you should email your CV to info@beechwoodindustries.co.uk. The closing date for applications is 27th July. For more information please call 01925 860544.

Apprenticeship Vacancies

Earn while you learn

 **Beechwood Industries**



Sneak Peek at SlimCare Medical's New Products and Branding. Watch this space for the official launch of SlimCare Medical's new website.



Community Solar Farm Public Consultation Event

10am-4pm, 26 & 27 June 2021

Lymm Hub

(Lymm Library, Sanctuary Hub & Business Centre)
Davies Way, Lymm, WA13 0QW



An open invitation to offer feedback on the plans for an exciting renewable energy project that will benefit the local community. This event runs during a 4-day programme of related events
24 & 25 June - IT Recycling at Lymm Sanctuary Hub
26 & 27 June - Launch of LEAF / LCE Solar Farm event
27 June - Lymm Historic Transport Day

More information

email: info@lowcarbonlymm.org.uk

www.lowcarbonlymm.org.uk/lymm-community-energy



E SMITH AND SON PLANT CENTRE

WWW.LYMMPLANTS.CO.UK

Over 60 years in Lymm and still growing!

THE NURSERY, BOOTH'S LANE, LYMM, WA13 0PF
01925 752459

A Kaleidoscope of Colour!

**HANGING BASKETS
PLANTED CONTAINERS**

Bedding Plants

Perennial Plants – in flower now!

OPEN 7 DAYS: MONDAY TO SUNDAY 10AM - 4PM

Lymm school honours Captain Sir Tom Moore with 100 steps to fundraising success!

YOUNGSTERS at Statham Primary school in Lymm took part in a '100' charity challenge to celebrate the life and legacy of Captain Sir Tom Moore, while raising much-needed funds for a local Warrington youth organisation.

Children at the school were invited to complete 100 of any activity – building 100 paper aeroplanes, a tower of 100 Lego bricks, 100 laps of the playground or completing 100-star jumps!

Pupils voted for their favourite challenges to attempt in each class. Suggestions included 100 cartwheels, 100 'keepy-uppies' with a football and 100 minutes of reading or drawing. Some were able to start the challenge at school and continued at home.

All the fun took place indoors and outdoors at the end of April, helping to raise more than £100. The event was part of a national '100 Challenge' initiative to celebrate what would have been Captain Tom's 101st birthday.

Deputy headteacher Mrs Allen explained: "The children were all so moved by Captain Sir Tom's efforts in fundraising last year. We have held many discussions in school about how he raised the profile of the NHS across the world."

"We were approached by Warrington Youth Club, who asked for our help in raising money for a

Buddy Up programme. The scheme supports vulnerable young people who may have been adversely affected by COVID 19 by helping to boost independence skills, develop their resilience and enhance their emotional wellbeing."

The children at Statham Primary

felt it was important to honour such a kind and generous person and they were keen to step in to help a great local cause. Children from each class get together every term as a school council to plan their fundraising calendar.

Headteacher Mrs Rooney said: "We are so proud of them for showing their typical community spirit, kindness, effort and perseverance. This is a great initiative that the whole school

was able to get behind. Well done everyone!"

For more info about Statham Primary, visit: www.statham.warrington.dbprimary.com

Statham Primary school open evening will be held this year on September 15th, 2021 from 5.30pm – 7pm.

Donate to Warrington Youth Club 'Buddy Up' programme by visiting www.warringtonyouthclub.co.uk



LIVE, LIVELY & LOCAL

lymm festival 2021

24th JUNE - 4th JULY

Celebrate summer and the end of lockdown with live music, comedy, literature and more.

Join us for live indoor events, returning outdoor favourites, and plenty of family fun.

Then take the Festival home with our range of virtual events!

All events will follow up-to-date COVID guidance and any cancelled shows will be fully refunded.



Tickets and full programme online

#LymmFest21
www.lymmfestival.org.uk

@LymmFestival





LYMM PARISH COUNCIL NEWSLETTER

The new Parish Council took office on 13th May. It has been elected for three years, rather than the usual four, to adjust for the extra year the previous Parish Council served due to Covid.

It is good to see a perfect gender balance and some younger Parish Councillors joining us this time. Seven councillors were re-elected and five are new to the Parish Council.

The new Parish Council is considering its priorities for the three years based on what the public told candidates during the elections.

There is a great deal of concern about protecting the green belt over the next 20 years. The Parish Council will remain a member of the South Warrington Parishes Group which is gathering, and submitting, evidence to modify the Warrington Local Plan to minimise the loss of green belt and ensure sustainable development.

Road and pavement repairs, as well as traffic regulation including speeding, parking and HGVs in the village are an important concern. The Parish Council will continue engaging with the Highways Department at Warrington and the Police to get changes that are wanted in the village.

During the Covid crisis there has been an increase in volunteering around the village both to protect the vulnerable and to help maintain the environment. There is also a continuing concern about the impact activities in the village can have on climate change.

The Parish Council will be supporting volunteer groups in these activities and providing a service itself in collaboration with the Borough Council to ensure that we get the best value from volunteer efforts and the work of the Councils.

The Parish Council will be discussing and taking decisions on these three priorities during its meetings in June and July to put together a strategic programme of work.

If there is anything that you would like the Parish Council to consider please contact Kerry Duffin, our clerk on the details below.

Cllr Bob Barr.



Contact information:

Clerk to the Council: Kerry Duffin - 07741 877870
clerk@lymmparishcouncil.gov.uk

Parish Council Website:

www.lymmparishcouncil.gov.uk

Lymm Parish Council 2021-22



Name: Cllr Bob Barr OBE (Chairman)
Address: 2A Danebank Road, Lymm WA13 9DH
Telephone: 01925 751817
Email: rbarr@lymmparishcouncil.gov.uk



Name: Cllr Graham Gowland (Deputy Chairman)
Address: 32 Wychwood Avenue, Lymm, WA13 0NE
Telephone: 01925 751599
Email: ggowland@lymmparishcouncil.gov.uk



Name: Cllr Kath Buckley
Address: 16 Hardy Road, Lymm WA13 0NX
Telephone: 01925 752439
Email: kbuckley@lymmparishcouncil.gov.uk



Name: Cllr Chris East
Address: 7 Newfield Court, Lymm WA13 9QU
Telephone: 07743 489329
Email: ceast@lymmparishcouncil.gov.uk



Name: Cllr Ann Johnstone
Address: 3 Lakeside Road, Lymm, WA13 0QE
Telephone: 01925 755554
Email: ajohnstone@lymmparishcouncil.gov.uk



Name: Cllr Selina Kirkham
Address: 2 Hardy Road, Lymm WA13 0NX
Telephone: 07971 109635
Email: skirkham@lymmparishcouncil.gov.uk



Name: Cllr Ian Marks MBE
Address: 80a Whitbarrow Road, Lymm WA13 9BA
Telephone: 01925 753051
Email: imarks@lymmparishcouncil.gov.uk



Name: Cllr Tim Martland
Address: 5 Dingle Bank Close, Lymm WA13 0QR
Telephone: 07595 837443
Email: tmartland@lymmparishcouncil.gov.uk



Name: Cllr Ben Selwood
Address: 44 The Crescent, Lymm WA13 0JY
Telephone: 01925 801160
Email: bselwood@lymmparishcouncil.gov.uk



Name: Cllr Sally Sharma
Address: 5 Baycliffe, Lymm WA13 0QF
Telephone: 07960 383148
Email: ssharma@lymmparishcouncil.gov.uk



Name: Cllr Julia Stansfield
Address: 46 Sandy Lane, Lymm WA13 9HQ
Telephone: 01925 758809 / 07928 848256
Email: jstansfield@lymmparishcouncil.gov.uk



Name: Cllr Stephen Towndrow
Telephone: 01925 757560
Email: stowndrow@lymmparishcouncil.gov.uk

New family law specialist joins team at FDR Law

WARRINGTON-based and full-service law firm, FDR Law has appointed Darren White as Associate Solicitor in the Family department.

Darren has over 12 years experience specialising in Family Law having worked at Morecrofts and more recently at Maxwell Hodge across their Merseyside offices.

Darren is a Member of Resolution and joins FDR Law, dealing with all private law aspects of Family Law.

On his move to FDR Darren said: "FDR Law has an outstanding reputation with great lawyers and support teams; I am joining them at an exciting time and I am very much looking forward to working with colleagues to develop and grow the Family department".

Commenting on Darren's appointments, FDR Law's CEO Mark Lockett said: "Darren's appointment FDR's commitment to reshaping our business to meet the legal needs of our clients going forward. The legal advice we provide to clients is

important to our firm and we always strive to provide current and potential clients with a wide arrangement of

legal services.

"Our most important asset is our people and we are delighted to welcome Darren to FDR. We were very impressed with Darren's positivity, enthusiasm, his approach

to doing his best for our clients and his wealth of knowledge, experience and ideas."

Darren can be contacted at FDR Law on 01925 230000 or via email at Darren.white@fdrlaw.co.uk

Care home residents celebrate return of outings with loved ones

RESIDENTS at Cheshire Grange Care Home in Lymm are celebrating being able to go on trips out again as lockdown restrictions ease across the country.

Residents are now able to go on a short trip with their designated visitor without having to isolate on their return.

Several residents from Cheshire Grange Care Home enjoyed long-awaited trips with their named visitor to their family's gardens.

Dawn Holsgrove-Smith General Manager at Cheshire Grange Care Home commented: "We couldn't be happier that our residents can start to go out again with their named visitor. Obviously, we still have to be careful so we're testing visitors before they take residents out but it is wonderful that our residents can spend time with their families out of the home. It really feels like we've turned a corner."

Margaret was one of several residents who went out with family in the first week of the restrictions being

lifted, "I am just so happy that I am able to spend some quality time in my garden with my family and Charlie my dog again, we have had such a lovely time together. The staff have been fantastic and worked really hard but it really was special to sit in my own garden with a glass of prosecco."

A varied life enrichment programme keeps residents active,

and provides a daily choice of engaging physical, mental and spiritual activities tailored to residents' interests and abilities.

Meanwhile, new residents are being welcomed into our homes for those that need care and support, with all homes as safe as possible by ensuring that all new residents and staff are vaccinated before moving in or working in a property.



Commercial • Commercial Property • Litigation
Employment • Wills • Trusts • Probate
Personal Injury • Conveyancing • Crime • Family & Divorce

01925 231000
info@fdrlaw.co.uk

Warrington | Stockton Heath | Frodsham

www.fdrlaw.co.uk



「FREE* Digital Skills Courses」

Improve your digital skills at Warrington & Vale Royal College

However basic your current digital skills, we are offering a wide choice of **FREE*** courses to help you build your confidence and abilities when using a computer, tablet or smart phone.

Call us today to find out which course would be the best fit for you.

📞 01925 494400



*Terms & conditions apply.

wvr.ac.uk/stream

Working in partnership:



Cheshire and Warrington
Local Enterprise Partnership



OPEN EVENING

WEDNESDAY 30TH JUNE, 4.00PM - 7.00PM

Register online: wvr.ac.uk/openevening

See for yourself what studying at Warrington & Vale Royal College has to offer at our next Open Evening!



**Warrington
& Vale Royal
College**

EXCHANGE YOUR GOLD AND SILVER FOR INSTANT CASH



All items of jewellery accepted

Did you know...?

We accept silver jewellery, cutlery, tea sets, spoons, cigarette cases, candlesticks, trophies, trays, medals, coins and pocket watches.

**ROLEX WATCHES WANTED!
ANY CONDITION**

Open: Tuesday-Saturday: 10am - 5.30pm

1 London Road, Stockton Heath
(First floor entrance on Fairfield Road)

07544 486 621



**GOLD & SILVER
BULLION DEALER**

Need IT Support at Home?

- Skilled and Friendly Technicians
- PC and Laptop Support
- Home Visit or Remote Dial-in
- Antivirus/Malware Check
- Unlimited Support Time



Ask for Ethan, Josh or Mark

aspire
Computers Ltd

Call our Team: 01925 251143
sales@aspire-computers.com | www.aspire-computers.com

MP not surprised by Boundary Commission proposal

WARRINGTON South MP Andy Carter says he is "not surprised" by Boundary Commission proposals to move Lymm and Thelwall into the neighbouring constituency of Tatton.

The Boundary Commission for England has revealed the first draft of proposed changes across the country, with just under 10 per cent of existing constituencies remaining unchanged, so each MP can represent a similar number of people.

Now there will be two years of consultation and Mr Carter is keen to hear the views of his constituents living in the Lymm & Thelwall areas and says the Boundary Commission will also be keen to hear their views.

Mr Carter said: "This is the first stage in what will be a two-year consultation to balance constituencies around the UK so that every MP represents roughly the same number of people."

"As the MP for Warrington South I currently have around 14,000 more constituents than the MP for Warrington North, so it's not a surprise to see some proposed changes to Warrington South to bring it down to the agreed level of the electorate."

"I'm very keen to hear from local people about the suggestion being outlined to move Lymm and Thelwall out of Warrington South and into Tatton and I know the boundary commission will be keen to hear from residents too."

While Warrington could lose Lymm and Thelwall to Tatton, currently held by Tory MP Esther McVey, Warrington North, represented by Charlotte Nichols MP, is almost unchanged, with the Westbrook Centre moved to Warrington South and part of Chetham Court at Winwick Quay moved in the opposite direction.

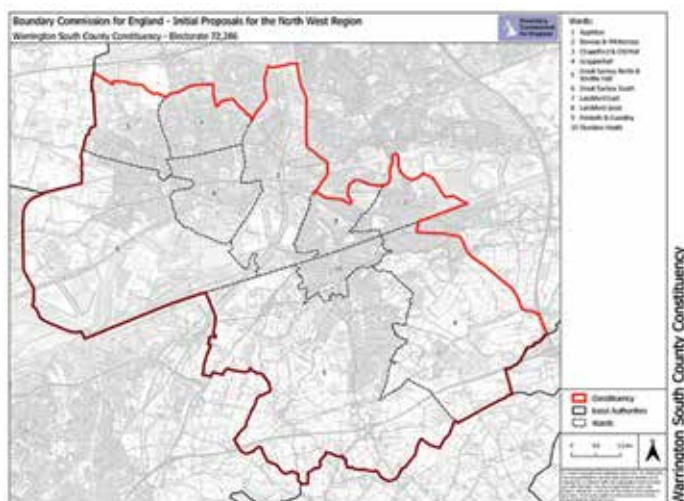
The first consultation, which will see the number of constituencies in England increased by 10 from 533 from 543, is now underway and will run until August 2.

This will then be followed by two further consultations during next year, followed by final recommendations which will be drawn up.

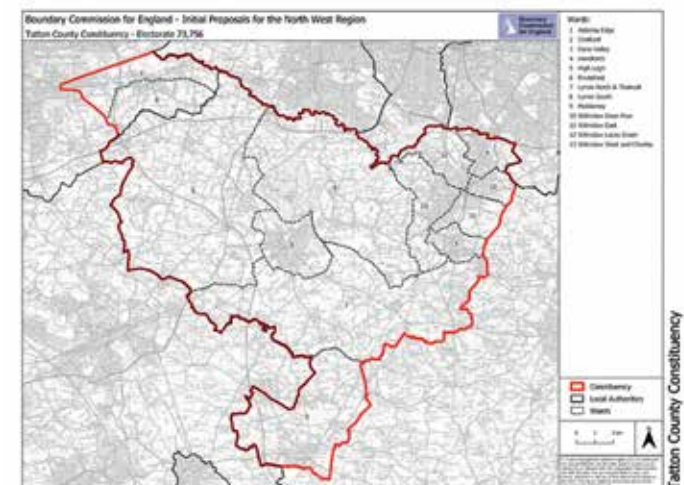
The proposals are due to be put in place in 2023.

Responses to the consultation can be made via <https://www.bcreviews.org.uk/>

Mr Carter can be contacted via <https://members.parliament.uk/member/4791/contact>



Warrington South proposed © Crown copyright and database rights 2021 OS 100018289



Tatton proposed © Crown copyright and database rights 2021 OS 100018289

FULLY FITTED ROLLER GARAGE DOORS

FROM **£895** * WAS **£1,354**
INC VAT

* Offer Valid For Openings Up To 2.6m Wide & Inc:
2 Remote Controls, 55mm White Slats,
Internal Manual Override



WHATS INCLUDED:

- ACOUSTIC & THERMAL INSULATION
- TWO REMOTE CONTROLS
- EXPERT MEASURING & FITTING
- 24 COLOURS AVAILABLE

Made To Measure... ROLLER GARAGE DOORS

Garolla can save a lot of space inside your garage. Rolls up vertically into a box. Takes only 8 inches of head-room! Opens vertically so you can park up close to the door. Remotely open/close the garage even from inside your car.

CALL US TODAY

Phone:
01925 205 302

Mobile:
07537 149 128

GAROLLA
ROLLER
SHUTTER
DOORS
www.garolla.co.uk



LOVE CARPETS

Love your home again...

FREE UNDERLAY UPGRADE TO ALL LYMM LIFE READERS!



A FAMILY-OWNED
LOCAL BUSINESS YOU CAN TRUST



A CARPET SHOWROOM
RIGHT IN YOUR HOME



BLEACHABLE CARPETS!
YES, YOU READ THAT RIGHT!

AT LOVE CARPETS, WE HELP HOMEOWNERS
MATCH THE PERFECT CARPET SAMPLES
TO THEIR TASTE AND DECOR, AND WE CAN DO IT
RIGHT IN YOUR HOME.

WE ARE A FAMILY-OWNED BUSINESS
AND HAVE OVER 50 YEARS OF EXPERIENCE.

SCHEDULE AN IN-HOME VISIT FOR YOUR CARPET
NEEDS, AND WE'LL SEE YOU WITHIN 48 HOURS



SEE OUR FACEBOOK PAGE FOR MORE PICTURES AND VIDEOS - @LOVECARPETS1

CALL IN STORE OR BOOK A HOME VISIT
AND WE'LL BRING THE SHOWROOM TO YOU!

OPEN MONDAY-SATURDAY 10AM-5PM

TEL: 01925 419423 | CRAIG MOBILE: 07888 845907
25-27 ORCHARD STREET, WARRINGTON WA1 2TE



Lymm RFC ready to return to action!

LYMM Rugby Club is opening up again after many months of inactivity caused by the COVID-19 pandemic.

Head coach Adam Fletcher said: 'Having no rugby to play has been tough but in the grand scheme of things it's pretty minor. I've been lucky enough to welcome a new addition to the family so I've had my hands completely full. It will be great to have a normal pre-season and kick off the league campaign in September.'

'It was great to see the boys take to the pitch again in home and away fixtures with Wirral RFC in May. We scored a lot of tries and looked really dangerous in attack. I was impressed with our physicality in defence, especially in the home fixture. I was really happy with all the boys that played, their skill set and fitness was impressive but the most pleasing thing was the way they

put their bodies on the line for each other. After 15 months off it could have been easy to be hesitant but everybody gave 110% and didn't take a backwards step.'

'We're really happy with the squad depth we've created. To be successful in our league you need to have a deep squad, it's something we've worked hard on over the past 18 months, so to go to Wirral missing so many regulars and to put that performance in was very pleasing.'

'We have also recruited well in the Lockdown period. The new guys have been great, we actually posted some information on social media and the Lymm RFC website last summer to recruit new players, and will probably do something again soon.'

'Kurt Riley (prop), Sean Boyce (2nd row), Samir Thanouri (back row), Ed Morris (back row), Ben Warman (back row), Sam Shepherd (back row), Kieran Hughes (centre), Jordan Houghton (full back), Mick Stafford (wing) all played in at least one of the Wirral fixtures.'

'It was also really nice to have Finn Murphy straight from the Colts Academy play for us. Ben Simpson played the Intra-squad game, another colt. We also welcomed Paddy Jennings back after finishing university.'

'In terms of pre-season the squad is having June off, starting back pre-season training at the start of July. We have two pre-season friendlies planned against Wilmslow 21st August waiting for confirmation on a fixture on the 14th, and a training night with Sandbach at the end of July.'

'As a squad and coaching team we can't wait to get back playing and entertaining everyone all down at Beechwood. I believe we are in for a good season, and see you all soon,' concluded Adam.



Obituaries

James Sproats

THE funeral has taken place of James (Jim) Sproats of Highfield Road, Lymm, who died on 19th February 2021 at Keate House Care Home aged 94 years.

Much loved husband of the late Mary Sproats - married for 54 years)

Leaves a son: James, Daughter: Maria, Son-in-law: Jeff, Daughter-in-law: Peggy

Brother: Peter, Sister-in-law: Beryl, 5 grandchildren and 10 great grandchildren.

Lived all his married life in Lymm, but was originally from the north-east.

Spent all his working life at Shell Chemicals - Carrington.

So well cared for at Keate House Care Home for the last 3 years of his life.

Funeral service on Tuesday 16th March at St. Winefride's Church, Lymm prior to Altrincham Crematorium

Father Tony Elder officiated. Funeral arrangements John Burrows & Sons of Lymm



Peter Latham

THE funeral has taken place of retired police sergeant Peter Latham, aged 82, of Lodge Close, Lymm, who died on April 6.

Peter had many varied interests. He was a member of St Peter's Church, Oughtrington, where he had held many positions.

He was a past president of Lymm Dingle Probus and was a member of High Legh Observatory. He also played Crown Green and short mat bowls.

He was a devoted husband, father to two daughters and grandfather to six young people as well as a good friend to many other people.

The funeral was at St Peter's Church on April 19.

The family would like to thank all those who sent cards, flowers and donations.

Funeral arrangements were by John Burrows and Sons, of Lymm.

Kath Elbra

THE funeral took place at St Peter's Church, Oughtrington on May 19 of Kath Elbra, aged 83, of Parkwood Close, Lymm, who died on April 11.

Kath had lived in Lymm for 46 years and was a key member of the community, belonging to many village groups and societies.

With her husband, Tony, she brought up three children, Caroline, Nick and Lilly.

She worked in education throughout her professional life and enjoyed many years of active retirement prior to becoming ill with motor neurone disease.

Kath will be sadly missed by her

husband, children, grandchildren and her many friends.

Funeral arrangements were by John Burrows and Sons of Lymm.



Established 1878

John Burrows & Sons
Fourth Generation Independent Family
Funeral Directors

Friendly & Professional Service
Day or Night ~ J. Tandy

The Old Smithy, Mill Lane, Lymm.
WA13 9SE Tel: (01925) 752501

Golden Charter
Funeral Plans

www.johnburrowsandsons.co.uk

Stan Beardwood



Died after a brave battle with Covid-19. Born in Preston, Stan was a motor mechanic whose trade brought him and his family to Lymm 37 years ago, following his partnership at Lakeside Motors.

He had many interests including cars, motorbikes, all things steam, football, cricket and exploring the British Isles.

Stan's memory is cherished by his beloved wife Mary, children Garry and Jayne and his much loved granddaughters Chloe, Lottie and Ella.

His humour, laughter and his love of life will be missed greatly by all who knew him. Stan's family hope to be able to celebrate his life with friends soon. Funeral arrangements by John Burrows & Sons.

Obituary Notices

While Obituary notices are published free of charge, due to pressures on space, we can never guarantee they will be used and there can also be a delay of several months.

If you would like to guarantee a notice to appear in the next available issue, these can be purchased for £75 plus VAT which helps towards the running costs of your free community magazine.

To place an obituary notice or any other public/family notice please email info@lymm.life.co.uk

Your notice will appear the same size as this advertisement.

CLASSIFIED

Call 01925 631592 to advertise

ACCOUNTANCY & BOOKKEEPING

BOOKKEEPER/ACCOUNTANT. Licensed for maintaining financial records, VAT Returns, Payroll Service, Management Accounts, SAGE Software Consultancy. **Contact: 07815 617914.** (G*)

AIR CONDITIONING

EXPERIENCED AND PROFESSIONAL Warrington-based 4 Seasons are air conditioning specialists. We install, maintain and repair air conditioning for business and homes. **FREE** call outs and special offers. **Contact John & the team on 0330 400 5471 or enquiries@4sac.co.uk or www.4sac.co.uk** (G*/20)

CARPET CLEANING

A1 STAINBUSTERS. A Warrington company cleaning carpets, hard floors, Upholstery (Leather + fabric) and curtains in situ. **FREE** quotes for domestic and commercial. Approved carpet cleaners for Hancock and Woods for over 10 years. **Call John on 01925 852088 or 07765 314080** (J8/21)

SIMPLY THE BEST CARPET CLEAN YOU will ever have. Cleaners UK Ltd. Est over 30yrs. Have your carpets & sofas beautifully deep cleaned leaving them fresh smelling & colour restored. Latest & best methods. Dry/steam. Leather cleaning, oriental rug specialist. Professional, reliable & affordable. **For more info call Neil Riley on 01925 264989 / 07831 336060 www.cleaners-uk.net** (J4/22)

CAR SALES

PARKVIEW CAR SALES

We buy and sell QUALITY CARS

Best price paid

Telephone Peter on 01925 575737 / 07957 545479

23 Padgate Lane
Padgate, Warrington
Cheshire, WA1 3RS (G*)

CHILD CARE

OFSTED REGISTERED CHILDMINDER
Lives close to Ravenbank School. Full time or Part time placements available. Pick up and drop off from Ravenbank School or Rosebank Nursery. From ages 0-12 years. **For more information contact Carole on 07731 089656 or leave a message on 01925 755108** (J4/22)

CLEANING SERVICES

arleys angels

- Spring Clean Specialists
- Presenting your home for sale
- Moving house
- After building work cleans

01925 266834

... because you're worth it! (G*)

SIMPLY THE BEST CARPET CLEAN YOU will ever have. Cleaners UK Ltd. Est over 30yrs. Have your carpets & sofas beautifully deep cleaned leaving them fresh smelling & colour restored. Latest & best methods. Dry/steam. Leather cleaning, oriental rug specialist. Professional, reliable & affordable. **For more info call Neil Riley on 01925 264989 / 07831 336060 www.cleaners-uk.net** (J4/22)

ELECTRICAL CONTRACTOR

TRUST PROPERTY ELECTRICAL SERVICES. NICEIC Part P Approved Contractor. All Electrical work undertaken. Inspection & Testing & PAT testing. All work certified & guaranteed. **Call Tim on 07754409906 or 01925 601055** (G12/21)

GARDENING SERVICES

- All aspects of tree surgery
- Stump grinding
- Waste removal
- Locally based
- Free quotation

Beechwood Industries

www.beechwoodindustries.co.uk

01925 860544 (G*)

MORTGAGES

TALKING MORTGAGES - INDEPENDENT MORTGAGE ADVICE.
For local, impartial and professional advice on all aspects of mortgages contact Darren Simpson on **07708 975122** (G8/21)

OPTICIANS

ADCOTT OPTICIANS. State of the Art opticians in the heart of Lymm Village. Comprehensive sight tests and a wide choice of spectacles tailored to you, whatever your budget. **01925 757075** (J1/20)

PAINTING & DECORATING

BENJAMINS PAINTERS AND DECORATORS. 20 years professional experience in commercial and domestic decorating, wallpapering, coving, interior and exterior work. **Telephone 07837 452514 or 01925 755198.** (J4/21)

BRUSH UP GIRLS. Female Painter and Decorators covering Warrington and surrounding areas. Professional quality work assured. No job too small. Call today on **07554 486 626 or find us on Facebook** (G10/21)

PHOTOGRAPHY

FAMILY & PET PORTRAIT PHOTOGRAPHY
Lymm based Andrew Collier Photography specialises in family and pet portrait photography using Lymm locations as a backdrop. Personal service with beautifully made frames and albums. **Call Andrew on 01925 471091 or visit www.andrewcollierphotography.co.uk** (G4/21)

RE-UPHOLSTERY

Orchard Soft Furnishings

RE-UPHOLSTERY
CURTAINS • BLINDS

FREE MEASURING & FITTING

TEL:(01925) 756388

www.orchardsoftfurnishings.co.uk (J11/20)

TAXI / PRIVATE HIRE

Horn's

Airport Transfer & Taxi Specialists

CALL MARTYN: 01925 751761

MOBILE: 07881 786250 (G9/21)

PAYROLL

WHY TRY TO BE A PAYE EXPERT?
Watkinson Black can provide a cost effective payroll service, releasing you to concentrate on your business. **For further details please phone: 01925 413210 or e-mail: info@warringtonaccountants.co.uk** (G*)

TYRES

ET ERGREEN Centre of Excellence

Express

Mobile Tyres

Local Family Business. Est 1997

01925 810000

www.expresstyres.co.uk

Order Online Today!

Branded & Budget Tyres
Cars, Vans, 4x4's, Caravans
Light Commercial
& Performance Vehicles

The tyre service that comes to you at home or your place of work

No Call Out Charge!

BRIDGESTONE MICHELIN

GOODYEAR Continental (G*)

OFFICE/SPACE TO RENT

THE NEW MEDIA CENTRE, OLD ROAD, WARRINGTON, WA4 1AT



APPROXIMATELY 1,500 SQ FEET

- FULLY REFURBISHED
- OPEN PLAN OFFICE
- CLOSE TO TOWN CENTRE
- SEPARATE BOARDROOM
- AVAILABLE IMMEDIATELY
- RECEPTION AREA
- AIR CONDITIONED
- 24 HOUR ACCESS

FOR MORE INFORMATION OR TO VIEW PLEASE CONTACT ALAN

07710 241 865 or alan@247print.net

Lymm Life

Classified Advertising

To advertise
in the classified section from
as little as £15+vat

Call us now on
01925 631 592

The North West's leading supplier of concrete

www.barrowmixconcrete.com

BARROW - MIX

**1984-2019
35TH YEAR
ANNIVERSARY**



FREE SITE SURVEY

6 DAY SERVICE

All areas covered

Free barrowing service

Only pay for what you lay

From half a cubic metre upwards

Levelling/laying service if required

(minimum charge)

We can supply

C25, C30, C35 Fibre Reinforced



VISA

MasterCard

Maestro

BSB

Call NOW for a FREE quotation
01565 734111 or 01942 722629