

G. HAZLEHURST.

Lymm Life Magazine

ISSUE 260 | MARCH 2021
DELIVERED FREE TO 5000 HOMES



urban
BUILDING PROJECTS LTD
Extension & Building Renovation Specialists
Tel: 01925 730888
www.urbanbuildingprojects.co.uk




LYMM PARISH COUNCIL
Approved by Lymm Parish Council as the official magazine for Lymm



Kids Planet LYMM
OPEN DAY
6TH MARCH

Heritage Centre success story

Page 12

Regular news updates at www.lymm.life.co.uk

COLMAN'S STARCH

Editor's Comment



Editor
Gary Skentelbery

Production
James Bryan

Advertising
James Balme
Telephone
01925 631592

Editorial
01925 623633

Email
info@lymmlife.co.uk

Websites
www.lymmlife.co.uk
www.culchethlife.com
www.frodshamlife.co.uk
www.warrington-worldwide.co.uk
www.warrington.tv

Address
New Media Centre
Old Road Warrington
WA4 1AT

Lymm Life is published monthly by Orbit News Ltd. The contents of this magazine are fully protected by copyright and nothing may be reprinted or reproduced without prior permission of the publishers. The publishers are not liable for any statement made or opinion expressed by third parties in this publication. Printed by TwentyFourSeven

SINCE launching Lymm Life in April 1999 we have covered many uplifting stories and recounted many tales involving community spirit and the numerous volunteers who help make Lymm such a unique place.

During our very first issue we reported on some local history via local historian Joe Griffiths and the Lymm Dinosaur footprint.

During many stories and conversations it was often mentioned how great it would be if Lymm had its own museum or heritage centre -but at the time many felt it was little more than a pipe dream.

Step forward Alan and Su Williams, fast forward the time machine and now thanks to their endeavors and their team of volunteers we now have a superb heritage centre, which any town or

city would be proud of, let alone little old Lymm.

It really is a Jewell in the crown and testament to what can be achieved through dedication and hard work.

I don't think Alan will ever forgive me for the photograph I took of him and Su in Victorian costumes pushing a Victorian Pram and baby doll which appeared on the front cover of Lymm Life!

Thanks to their dedication and ambition, a lottery fund and a generous landlord (thank you Howard Platt) not only did Lymm Heritage Centre become a reality - it is now going from strength to strength with a sound financial footing, even though it is closed due to the pandemic.

It has attracted circa 20,000 visitors has 5,000 followers across two facebook pages and more than 1,000 children have participated in educational activities, with over 3,000 visitors to the online archive, thelymmarchive.co.uk which now holds almost 3,000 entries!

Not only does Lymm have a great history it now has a lot of it online for future generations to enjoy.

While I am sure Alan will be relieved I have not managed to dig out the infamous photo of the

Victorian Pram I did stumble across a snapshot I took at the very first Lymm Transport Day, when Alan was wondering whether there would ever be another one!

I am pleased to say the clouds soon lifted and thanks again to a great army of volunteers we have another amazing community event - whether the pandemic restrictions will lift in time for an event this year, only time will tell.

Deadline for the April issue of Lymm Life is March 9



N & J STANHOPE

Coal and Log Supplies

Best Quality Coal
Smokeless Fuel
Logs Supplied in Bags and Bulk
Caravan Storage
Open 6 Days. Closed Sunday

Broomedge Farm
Burford Lane, Lymm WA13 0SE

Tel: 752830
Mobile: 07979 785 421



Worried about the long term effects of lockdown, looking for support? Come and join our community

OPEN for new Admissions - Virtual tours available

Now Available – Brand New dementia friendly en-suite garden view rooms, Plus recent extensive refurbishment to our day lounge, garden and the 'Keate Arms'








Dementia Care • Residential Care • Respite • Day Care

www.keatehouse.com
Call: 01925 752091 Email: enquiries@keatehouse.com
9 Brookfield Road, Lymm, Cheshire WA13 0QL









Dan takes to social media to share mental health story to help others

A FORMER Lymm student has taken to social media to share his own mental health journey in a bid to help others.

In a short space of time Dan Gordon, aged 24, a former student at Lymm High School has attracted nearly 500 followers to his "Strength in Stories" Instagram page, where others are now also sharing their own stories.

Dan said: "I have recently set up the page Strength in Stories on Instagram. From my own experience with mental health, I know how valuable it is to see stories of people who have been through the same thing.

"During the most intense periods, I would always be searching the internet for stories of people who had been through similar experiences as me. There was one particular blog that I must have read over 50 times.

"The trouble was that these stories were always few and far between. I would have to trawl through blog after blog or hope to chance upon a random article to find one. Often, I would come across the opposite, as many websites are full of horror stories of bad mental health experiences."

This is where this idea for Strength in Stories came from.

"My goal is that this page becomes a source of hope for other people who find themselves in the situation I was in. By no means do I want to make out that mental health difficulties are all sunshine and rainbows, but I do want to show that there are people like them

living with mental health problems every day and these people are still able to lead content and successful lives.

"My aim is for as many people as possible to see the page. I feel this is especially important in this current moment, where looking after our mental health is more important than ever. I hope people will take some comfort from these stories; in the same way I did when I first found that blog."

If anyone wants to share their story or follow the page, then it can be found at @strength_in_stories on Instagram.

Below Dan shares his story.

Dan's story:

"It was at the end of second-year uni that I first acknowledged that I was a bit off. I had two things I was really looking forward to in the summer and when I was doing them, I remember being aware that I was flat and just not feeling anything about it.

That year at uni hadn't been the easiest. I went through a breakup, I wasn't enjoying my course and I was rarely going out of the house, other than to go out and drink. I would always be thinking that everyone else was having a great time compared to me. At that point, I just put how I felt down to what was going on in my life. I never considered that it was anything more. My year abroad was coming up and I think I pinned a lot of hopes on it. I thought that would be the solution for all of my problems. It was a huge thing that I'd wanted to do for ages, but when it came around, I didn't feel positive, I didn't feel sad, I didn't feel nerves, I just felt nothing. I tried to tell myself "this is amazing", but inside, I was just empty. By Christmas, I was starting to think that okay, something might not be quite right here and that it might be more than just who I am as a person.

I was at home in England in February and knew I'd put it off long enough, so booked to see my GP. The doctor suggested that I could be depressed

and advised that I attended some counselling. I thought okay, I'll tell my parents and we'll book some counselling for when I get back from Vienna in Easter.

On the first Saturday of our Easter holiday, I was watching the TV and having breakfast as normal when suddenly my brain started racing at a million miles an hour. I felt like my head was falling, falling and falling. I suddenly got intense, depressive, overwhelming thoughts of what's the point in anything - it's all pointless, a waste. My whole perspective had gone. Everything had changed in that moment. The day after, I had to tell my mum that something was wrong and that I felt different. I remember I broke down in tears as I told her. I was terrified. I just didn't know what was going on. I was later informed by my counsellor that I had experienced a stress-induced mental breakdown.

After a few weeks where I didn't improve, she suggested that I try some medication. From then, it was just a long, long slog. When you first start medication, you think you're going to be fine straight away but antidepressants take a while to properly work. It is really up and down. Often they can make you feel worse for periods, which makes you feel like you're just back at the start. Those few months was the toughest period of my life. Depression is like a heavyweight.

When it comes on strongly, you feel like you can't move. Everything becomes a massive challenge. At points, you just want to melt into the bed and to disappear. It requires such strength of will. You have to be strong because there are points when you want more than anything for it all just to stop.

Thankfully though, I battled through it and after a couple of months had passed, the medication I was on started to level me out. I stuck with the medication and tried to incorporate some lifestyle changes. I was still very flat but it at least stopped me having the deep plunges and the intense spiraling of my mood.

For the rest of Dan's story visit his Instagram page @strength_in_stories

Sophies Soft Furnishings

Curtains • Roman Blinds
Cushions • Tiebacks • Poles
Tracks • Valances • Pelmets

We design, make and fit to meet your exact requirements.

For free home visit or advice ring **Anne on 01925 754446**
www.sophiessofffurnishings.co.uk



DAN'S STORY

E.L.B. Fireplaces

Call us on: 01942 607250
www.elbfireplaces.co.uk
70 Twist Lane, Leigh, Lancashire WN7 4DP

Fire Surrounds, Stoves, Gas & Electric Fires

Established 30 YEARS

No need to change your carpet - made to measure fireplaces

Over 75 displays over 2 floors

Live wood burning stove on display

Is your conservatory too cold to use in Winter? Why not install a stove?

Rosebank & Naturegarten

PLEASED TO BE PROVIDING CHILDCARE AND EDUCATION FOR CHILDREN IN A SECURE AND SAFE WAY WITH OUTDOOR SPACE TO PLAY AND LEARN

We have great spaces and places for babies and children at Rosebank and Naturegarten.

Part time, full time sessions available for term time and all-year round

Excellent facilities and standards at our two Lymm nurseries.
Please phone for details or view our website

THE ROSEBANK CENTRE & ROSEBANK NATUREGARTEN, PEPPER ST
WWW.RNGROUP.CO.UK 01925 320161
@rosebankandlakescentres

What's On in conjunction with Lymm Parish Council



PLEASE CHECK ANY EVENTS BEFORE ATTENDING DUE TO COVID-19 RESTRICTIONS.

LYMM PARISH COUNCIL
Online monthly meetings due to Covid-19
Check www.lymmparishcouncil.gov.uk for details.

LYMM THURSDAY EVENING BRIDGE CLUB
Lymm Village Hall every Thursday 7pm

MAPLE LODGE ART GROUP
Meet each Wednesday 9.00am - 11.30pm
Oughtrington Community Centre, Lymm
Details: 01925 755126

ROTARY CLUB OF LYMM
Meets at Statham Lodge on the 2nd and 4th Wednesday each month for a Fellowship and a Business meeting respectively.
Contact the Secretary 01925 758398

LOVING HEARTS & HANDS
Knitting for charity at Lymm Methodist Church, 2nd and 4th Thursday each month.
1.30pm - 3pm. Details: 01925 753298

MARKET LUNCHES
Eagle Brow Methodist Church
3rd Thursday in the month
Light lunches 12 noon till 2pm. All proceeds to Youth For Christ and YMCA Room at The Inn

GARDENING CLUB
Meet Third Wednesday of the month
Lymm Baptist Church, Higher Lane. 7.30pm
Visitors welcome. £2 includes tea and cake

LYMM FLORAL ART GROUP
Lymm Village Hall
Third Monday of the month (except August and December) at 7.30pm. Visitors most welcome. Contact: 07876 176501
lymmfloralart.org.uk

LYMM PHOTOGRAPHIC SOCIETY
Every 2nd and 4th Wednesday
(ex July & Aug), 7.30pm
Spread Eagle pub, Eagle Brow.
Details: www.lymmphotosoc.org.uk

LYMM WINE AND BEER CIRCLE
3rd Wednesday of the month, 8pm
The Spread Eagle Hotel
Details: 01925 756444

LYMM CONCERT BAND
Rehearsals every Thursday evening
United Reformed Church, 8pm.
Details: 01925 752934

LYMM WI
Every second Wednesday, 2-4pm at Lymm Youth and Community Centre. Visitors welcome.

LYMM BOOK CLUB
Second Thursday of the month 7.30pm,
Spread Eagle, Eagle Brow. Details 01925 752371

4LYMM VOLUNTARY ORGANISATION
Meet every 2nd Monday at 7.30pm in the Bridgewater Club, Whitbarrow Road.
All welcome. Tel 01925 756378 for details.

LYMM AND DISTRICT MIXED VOICE CHOIR
Every Wednesday 7.30 Lymm Methodist Church. Contact 01925 601664.
cafh@stones.co.uk

PROBUS CLUB OF LYMM
A small, friendly social club for retired people.
Meets on second and fourth Tuesdays at 2:15pm.
Details: www.LymmProbus.club



LYMM PARISH COUNCIL

Online monthly meetings due to Covid-19.
See parish council website for details.

Kids Planet has COVID safe open day planned

Kids Planet Lymm, an Ofsted Outstanding nursery and caters for babies through to preschool has a COVID safe open day planned for March 6.

Following the EYFS (Early Years Foundation Stage), children are given the best education, care and start in life. The nursery benefits from a state-of-the-art sensory room, CCTV, all-weather outdoor areas and garden, access to their very own allotment, flexible opening times and out of school and holiday club places are also available. The setting provides nutritious food made fresh on site daily and caters for all dietary needs. The Nursery Chef work with the staff and children to provide a wide range of cooking activities.

Kids Planet understand how precious those first five years are and how they should be steeped in magic, awe and wonder which is reflected within our setting and through our amazing team.

Come along to our COVID safe open day on Saturday 6th March, 10am till 2pm. Where you can view our amazing, and double Ofsted Outstanding accredited, nursery and meet the dedicated childcare team. Prospective parents can take advantage of free registration on the day, a saving £100. Appointments are required to book in advance, to book your place contact the nursery on 01925 759220 or lymm@kidsplanetdaynurseries.co.uk



ANDY CARTER MP

WORKING HARD FOR WARRINGTON SOUTH

Here to Help


As your Member of Parliament I am here to help residents with any local or national concerns. I am absolutely committed to providing advice and support to all Warrington South residents. So if you need help, please don't hesitate to get in touch.

Andy




Contact Andy

- ☎ 01925 231 267
- ✉ andy@carter.org.uk
- ✉ andy.carter.mp@parliament.uk
- 📱 @MrAndy_Carter
- 📍 Andy Carter Warrington South
- 🏢 Warrington South Constituency Office
- 1 Stafford Road, Warrington WA4 6RT




G.P. BROADSMITH & SON
POOL FARM, LYMM
*Bottled on the Farm
From our Free Range Cows*

**DELICIOUS MILK FROM OUR HAPPY COWS
DELIVERED TO YOUR DOOR!**




Here at Pool Farm we take good care of our free-range dairy cows. They produce fresh, quality milk which is bottled in our own farm dairy and delivered to local doorsteps. We also stock a range of associated products such as eggs and potatoes, all sourced from local farms.

Call 757655 or email milk@broadsmith.com to discuss early morning deliveries to your doorstep and follow us on Facebook or Instagram at @broadsmiths where you can keep up to date with life on the farm!



G.P. BROADSMITH & SON
POOL FARM, POOL LANE,
STATHAM, LYMM, WA13 9BW
TEL: 01925 757655
YOUR LOCAL DAIRY Est. 1932





March Open Day 2021

Kids Planet Lymm

COVID SAFE
✓

Are you looking for a nursery for your little one? We are delighted to welcome you to our open day event. Sign up on the day and receive free registration.

- ✓ Outstanding facilities
- ✓ Fully qualified staff
- ✓ Meet our dedicated team

- ✓ Appointment only
- ✓ Free registration on the day
- ✓ Covid safe showround

Kids Planet are a multi-award winning nursery group in the North West and Midlands.

Saturday 6th March • 10am - 2pm • Save £100




01925 759 220




lymm@kidsplanetdaynurseries.co.uk
 29 Eagle Brow, Lymm, Cheshire, WA13 0NA

LEADERS IN FAMILY LAW.

Delivering the results when it matters

Specialising in:

Divorce & Separation

Financial Settlements

Child Related Matters



Stockton Heath 01925 912 277

Hale 0161 926 1430

Manchester 0161 834 2623

caroline.swain@bpsfamilylaw.co.uk

www.bpsFamilyLaw.co.uk

Praise for emergency services over floods response

LOCAL Lib Dems have praised the response of emergency services to the flooding problems which have impacted across Warrington.

In a joint statement, Lymm Liberal Democrat Councillors Bob Barr and Ian Marks said, "The COVID crisis has showed the tremendous benefits of different organisations working together to combat a problem. The exceptional rainfall that has caused flooding problems in parts of Lymm and elsewhere in Warrington has again shown the benefits of co-operation.

"We have been very impressed by the way Warrington Council, the Police, the Fire and Rescue Service, the Environment Agency, Housing providers and others have come together. The Council and the Environment Agency have provided useful bulletins, which they have updated frequently.

"There are two reasons for the flooding in Lymm. Firstly the River Bollin has overflowed but secondly, the run-off from water-logged fields has caused road closures like in Warrington Lane. The combined emergency services have worked very hard to provide people with sandbags, provide support for evacuations, close roads and generally provide advice and help.

"Lymm Parish Council working with Parish Councillor Graham Gowland opened the Village Hall for anyone who needed somewhere to go. It wasn't needed but the offer was there.

"Thankfully the water has now subsided and power is being

reinstated into houses. Work to clear up all the mess can now start. Everything has been complicated by the need to obey the COVID restriction rules.

"Our thanks go out to all the emergency services and our sympathies to those whose homes have been affected. Councillors will continue to give what help and advice they can to people who make contact."

Flooding in the Warrington area reached record levels, never seen before, as homes were evacuated and power was cut off.



When you think you need A&E, contact NHS 111 first

Residents of Lymm and surrounding areas are being asked to use a new way to access A&E as part of the latest phase of the NHS national 'Help Us, Help You' campaign.

You should now contact NHS 111 first if you need urgent care, but the condition is not life threatening. By contacting NHS 111 first, you will receive expert advice from a team including health advisors, nurses, paramedics, doctors and other medical specialists.

Depending on your individual needs, NHS 111 can book time slots at the most appropriate local

NHS service, including urgent care centres, GP practices, pharmacies or A&E, if required. Some specialist services also have slots which can be booked directly via NHS 111 so they can be accessed without needing to attend at A&E.

Contacting NHS 111 first will help the NHS keep you and your family safe during the coronavirus pandemic, by supporting social distancing in waiting areas and ensuring people receive the right care in the right place, in a more timely and safe way.

You can contact NHS 111 when you need medical help fast, but it's not a 999 emergency. NHS 111

is a fast and easy way to get the right help, whatever the time. The service is available online and by phone 24 hours a day, 365 days a year and calls are free from landlines and mobile phones.

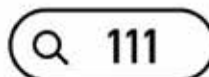
If you or your loved one has a life-threatening illness or injury then you should always use 999 and if you do arrive at A&E without contacting NHS 111 you will still receive medical care. The most seriously ill patients will always be prioritised first.

Just think 111 first. When you think you need A&E, contact NHS 111 by phone or online.



JUST THINK 111 FIRST

When you think you need A&E, contact NHS 111 by phone or online.



Road closures set for Lymm

A number of road closures are being proposed at Lymm for carriageway and footway surfacing.

Warrington Borough Council has made an Order under Section 14 of the Road Traffic Regulation Act 1984 for the following road closures from February 22nd for a period of up to six weeks.

Prohibition of Driving & Clearway: Entire lengths of road: Whitesands Road; Albany Road; West Heath Grove; Jubilee Grove; Pool Lane from Whitbarrow Road to Brookside Avenue; Clearway: Rushgreen Road from Reddish Crescent to Springbank Gardens.

The Order will be effective from 22nd February 2021 for 6 weeks between 8:30am and 5:30pm,

when signed on site.

Access will be under the control of the relevant Contractor for the duration of the works. The alternative routes are Pool Lane via Whitbarrow Road, Pool Lane and vice versa; Whitesands Road via Star Lane, Whitbarrow Road, Northway, Albany Road and vice versa or via Star Lane, Albany Road and vice versa; Albany Road via Star Lane, Whitbarrow Road, Northway and vice versa.

The restrictions are required for carriageway and footway surfacing.



Professional tree services

Free Quote

- Domestic
- Commercial
- Site Clearance
- Vegetation management
- Stump grinding
- Re-planting
- £10m public liability insurance

Beechwood Industries
www.beechwoodindustries.co.uk

For more information, please call us on **01925 860544**

CP CS Citib Constructionline City & Guilds NPTC Qualified CHAS

GROW YOUR OWN WITH PRIMROSE

- ✓ Seed potatoes
- ✓ Garlic bulbs
- ✓ Shallots & onion sets
- ✓ Vegetable seeds
- ✓ Compost
- ✓ Seed trays & pots
- ✓ Plant labels

PRIMROSE HILL NURSERIES
Est. 1935

OPEN TO THE PUBLIC AND TRADE: MON-SAT 8.30am-5pm. SUN 10am-4pm.
WARRINGTON ROAD, HIGH LEGH, KNUTSFORD, CHESHIRE WA16 0SQ. 01925 752635

f i t

Less is More!

- Get paid quicker – Improving your cash flow
- Less time spent sorting old receipts – Free up countless hours each week.
- Less jargon and more proactive advice – Watch your business flourish.

Don't let these issues hold your business back.

To find out how we can remove your financial headaches call us:

01925 761600

or visit us at:

www.stylesandco.co.uk

styles and co.
chartered accountants



Parish council looking after Lymm's environment

LYMM Parish Council has taken on a new part-time Environment Warden to help look after the village's environment and green spaces.

Pressure on finances at Warrington Borough Council means that if tasks are to be carried out in the village, then the Parish Council needs to take on a bigger role.

Chairman of the Council's Environment Committee, Cllr Ann Johnstone said: "Our new employee Lesley Coates will report to our Environment Manager Paul Urmston. Lymm also has an

Environment Working Group with an independent Chairman

Chris Wakefield. This Group is taking on an increasingly important role and brings together councillors, council employees, representatives of the many 'green' organisations we are blessed with in Lymm as well as residents.

"We all want to work together to help make Lymm a greener and more attractive place."

The Parish team works closely with Warrington Council's Ranger Tim Baker and with the groups represented on the Environment Group.

Current projects include looking for sites for more tree planting, reviewing signage in the village to decide what is missing or what is surplus, a knotweed survey, investigating the feasibility of a water fountain, litter picks and persuading landowners to cut back hedges over-hanging pavements.

Paul Urmston added: "One of our other roles is to work closely with the PCSOs to move the portable Speed Indicator Devices, known as SIDs, around the village and make sure their batteries are charged. Please contact us on environment@lymmparishcouncil.gov.uk if you have any suggestions about where



Lesley Coates showing off some new equipment at the top of Slitten Brook.



Paul Urmston with a SID.

a SID should be located. Also let us know if you have any ideas on environmental improvements that we can add to the team's work-plan."

New recruit Lesley added: "In keeping with our green commitment, we have upgraded some of our equipment so everything is now electric and nothing runs on petrol any longer. I am setting up a Facebook page and Instagram so we can show everybody what we are doing to make Lymm a nicer place in which to live."



TCAT



T-LEVELS



PRIESTLEY
◆◆ COLLEGE ◆◆
WARRINGTON

VIRTUAL Open Event

Wed 3 March 5:30pm - 7:30pm

To sign up for the open event
go to priestley.ac.uk

Elections in Warrington are happening in May

We're working to make our polling stations COVID-secure, but if you would prefer to vote in other ways, you can.

Want to vote by postal or proxy?

Visit warrington.gov.uk/elections2021
or call **01925 442555**



YOUR VOTE MATTERS

DON'T LOSE IT



WARRINGTON
Borough Council

Former student publishes poetry book on mental health journey

A former Lymm High school student who emigrated to New Zealand, where he ended up homeless, has published a poetry book about his mental health journey.

Now a Fitness Coach based in New Zealand, Alex Thomas has coached in over 12 different gyms around the world and it has taken six years to complete the book of poetry he has been writing on all his journeys.

While in Lymm he played county rugby and was a regional swimmer before moving down south for three years and then on to New Zealand, running his own fitness programmes

and business.

He now hosts his own podcast on the lifestyle of fitness including physical and mental health and wellbeing.

Alex said: "The book has over 100 poems narrating tales of mental health. It has taken me 6 years to complete and I have been writing it on all my journeys. I moved over to New Zealand late 2019 where I actually became homeless before

working my way back up to the position, I'm in now.

"I have lived on couches, my car, a shed. Through it all I kept writing different poems on mental health, eventually publishing in December 2020."

Alex attended Lymm High with his good friend Dan Gordon, who features on page three with his strength in stories, outlining his own battle with mental health.

His book is available here www.amazon.co.uk/dp/B08R64MMX3



Former Lymm student takes action to inspire key workers' children

A former Lymm High School student has been involved in producing a series of videos to inspire the children of key workers to stay active during lockdown.

Alex Davies was part of Priestley College's Sport cohort who recorded demonstrations of the tasks as part



of a partnership with Warrington's School Games programme.

It is hoped these videos will now be used in the town's primary schools to encourage the children of key workers to do their required daily exercise.

"I wanted to help out was because I could only imagine how difficult it has been for everyone caring for young children during the lockdowns," said Alex, who studies Sport and Exercise Science at Priestley.

"I thought it would help give these children something fun to do and it was also fun participating in the activities at college as well."

In previous years Priestley students have hosted sports festivals for primary school children in what has

been a valuable experience for their development.

Producing the videos was a different if no less valuable opportunity as they had the pressure of demonstrating the tasks on camera.

As well as those studying Sport and Exercise Science, Tutor Phil Knowles also involved his Year 1 Sport students.

The resource will be downloadable from the Warrington School Sport Partnership website.

"Once again the Priestley College community has helped in the delivery of the national School Games programme to the local Warrington area," said School Games organiser Colin Grady.

"It's always a pleasure working

with the college sports department and the high-quality students they teach on a daily basis."

Among the challenges posed by the Priestley students was target golf using everyday items to provide some aiming practice.

Other games are called 'Not in my backyard', 'Throwmania' and 'Bumping Balance' and there is even a task involving clearing up items that might otherwise be thrown away.

"Our students have really enjoyed getting involved," said Sport Tutor Katie Radford.

"It has made them realise some children are missing out on being active because they are not interested in the traditional routes into sport such as football and rugby."



Commercial • Commercial Property • Litigation

Employment • Wills • Trusts • Probate

Personal Injury • Conveyancing • Crime • Family & Divorce

01925 231000

info@fdrlaw.co.uk

Warrington | Stockton Heath | Frodsham

www.fdrlaw.co.uk





Warrington & Vale Royal College



LEAVING SCHOOL THIS SUMMER? SECURE YOUR PLACE NOW!



WHY CHOOSE WARRINGTON & VALE ROYAL COLLEGE?

We are proud to have achieved a 'Good' rating in our last Ofsted inspection (October 2019)

We continue to deliver outstanding results and are ranked in the top 12 colleges nationally - the top 7%

Record number of Level 3 students progressing to their first choice university

98% of students agree that tutors have high expectations and encourage students to work hard

APPLY ONLINE TODAY: WVR.AC.UK/APPLY



Apply now for September 2021

Study Access to Higher Education & Higher Education qualifications on your doorstep!

Full-time fees just £5,995 per year
Significantly lower than university fees!

Why choose Warrington & Vale Royal College?

Affordable course prices
Less debt without compromising on quality

Excellent links with employers
Fantastic facilities on campus

Small class sizes
One-to-one support and guidance



Visit wvr.ac.uk/he for more information



Warrington & Vale Royal College

PSYCHOLOGY DISCOVER SPORT DISCOVER SCIENCE DISCOVER FINE ARTS DISCOVER
LAW DISCOVER LEADERSHIP DISCOVER RADIOGRAPHY DISCOVER
SOCIAL WORK DISCOVER COACHING DISCOVER GRAPHIC DESIGN DISCOVER

EXCHANGE YOUR GOLD AND SILVER FOR INSTANT CASH



All items of jewellery accepted

Did you know...?

We accept silver jewellery, cutlery, tea sets, spoons, cigarette cases, candlesticks, trophies, trays, medals, coins and pocket watches.

**ROLEX WATCHES WANTED!
ANY CONDITION**

Open: Tuesday-Saturday: 10am - 5.30pm

1 London Road, Stockton Heath
(First floor entrance on Fairfield Road)

07544 486 621



**GOLD & SILVER
BULLION DEALER**

Need IT Support at Home?

- Skilled and Friendly Technicians
- PC and Laptop Support
- Home Visit or Remote Dial-in
- Antivirus/Malware Check
- Unlimited Support Time



Ask for Ethan, Josh or Mark



Call our Team: 01925 251143

sales@aspire-computers.com | www.aspire-computers.com

Lymm Heritage Centre completes successful Lottery project



ALMOST four years on from a successful lottery bid, Lymm Heritage Centre is going from strength to strength despite lockdown and now has a strong financial footing to carry on telling the story of the village.

Since Lymm Heritage Centre heard the exciting news that they had been awarded £88,000 to help fund a project to tell Lymm's Story through education, an on-line archive and, most excitingly, through the development of the Centre itself, it is just the beginning for the community project run by volunteers.

On January 31st that project officially came to an end and the team behind it have been celebrating a great success even if the Centre is currently unable to open to the public due to the pandemic.

The final report presented to the Heritage Lottery fund contains some impressive numbers: 20,000 visitors, 5,000 followers across two facebook pages, over 1,000 children participating in education activities and over 3,000 visitors to the online archive, thelymmarchive.co.uk which now hold almost 3,000 entries.

"The numbers make exciting reading," said the Centre's chair Alan Williams. "Our mission was always to share heritage and add to what is already a strong sense of community pride and identity. But we are also thrilled to have had such a positive impact for individuals including the 100 or so volunteers who have been involved at some stage in the project as well as our many visitors and the people who have shared their stories with us".

A huge amount of work has also been done over the last twelve months that the public has yet to see, including a video wall and an exciting exhibition about Lymm's many traditions from soulcaking to May Queen, plus games and activities for children.

"We can't wait to be able to open our doors and show the

public what has been achieved," said volunteer co-ordinator Mark Linnell.

There's even more good news on the financial front as treasurer Patrick Knowles explained. "We have been conscious from day one of the need to generate income in a variety of ways from friends to local support from organisations like the Parish Council. Room hire and retail have also been important with the centre's books and jigsaws being especially popular. We now have a strong financial base for the future, thanks also the Heritage Lottery Fund and to our benevolent landlord, Howard Platt whose generosity got us started".

Until the Centre opens then potential visitors are encouraged to explore Lymm's fascinating past through the digital archive. e LyDiA at thelymmarchive.co.uk which has been co-ordinated by another member of the team, Glynis Allen.

If you have stories to tell, pictures or objects to share or would just like to get involved you can contact the Centre via their website www.lymhc.co.uk



FULLY FITTED ROLLER GARAGE DOORS

FROM **£895** * WAS **£1,354**
INC VAT

* Offer Valid For Openings Up To 2.4m Wide & Inc:
2 Remote Controls, 55mm White Slats,
Internal Manual Override

WHATS INCLUDED:

- ACOUSTIC & THERMAL INSULATION
- TWO REMOTE CONTROLS
- EXPERT MEASURING & FITTING
- 24 COLOURS AVAILABLE

Made To Measure...
ROLLER GARAGE DOORS

Garolla can save a lot of space inside your garage. Rolls up vertically into a box. Takes only 8 inches of head-room! Opens vertically so you can park up close to the door. Remotely open/close the garage even from inside your car.

CALL US TODAY

Phone: 01925 205 302

Mobile: 07537 149 128

GAROLLA

ROLLER SHUTTER DOORS

www.garolla.co.uk



LYMM PARISH COUNCIL NEWSLETTER

We start this newsletter with a mix of messages. On a positive note, the vaccines are being rolled out across Warrington and the rest of the country. Thank you once again to our national NHS staff and all the front-line workers and volunteers. Unfortunately, however, the floods in January have displaced a number of residents from their homes, causing damage and heartbreak to several families in Lymm and many more across the whole Borough. The Parish Council has committed to working with the necessary agencies to do what it can to support those who have suffered, in some cases twice in just 18 months.

The book swap telephone box has finally been replaced at Sandy Lane. It can once more be looked after by the volunteers and used by the public - an asset to the community.



The Parish Council has a new revamped website which will be updated and improved over the coming weeks. It has the same address - www.lymmparishcouncil.gov.uk - and we hope that everyone finds it informative and easy to navigate. If you have any suggestions for content, do let us know. You can also sign up to receive the Parish Council newsletter directly to your inbox.

The new toilet facility at Lymm Dam is still work in progress with handover from Warrington Borough to Lymm Parish Council anticipated in the coming weeks. With the ongoing damage to the external timbers, it is important to ensure the safety of the facility pre-opening.

At the time of writing, it is looking certain that 2021 will see the postponed Local Elections take place in Warrington and elsewhere in the country. If you are wary of voting in person due to COVID-19 make sure that you register for your postal vote. You can ring 01925 442184 or email - elections@warrington.gov.uk

You might also be thinking about putting yourself forward to be an elected member of your local community. If so, look at the advice given on the Warrington Borough Council website - Being a Councillor. You can ring 01925 442184 for forms and advice or email them at elections@warrington.gov.uk

Hopefully Lymm will see its usual festivals this year in one form or another. Lymm May Queen hopes to take place in September and fingers crossed for Lymm Festival, Transport Day and Dickensian.

Parish Council Grants awarded this year to date:

COGS	£5000 Towards essential roof repairs
Heritage Centre	£2000 Match funding for Heritage Lottery Application
Oughtrington Cricket Club	£850 Towards new CCTV system
Lymm Radio	£4350 Mobile radio equipment for community events

Contact information:

Clerk to the Council: Kerry Duffin - 07741 877870
clerk@lymmparishcouncil.gov.uk

Parish Council Website:

www.lymmparishcouncil.gov.uk

Lymm Parish Council 2020-21



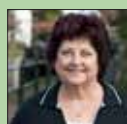
Name: Cllr Geoff Hawley (Chairman)
Address: 27 Brook Road, Lymm, WA13 9AH
Telephone: 01925 754113
Email: ghawley@lymmparishcouncil.gov.uk



Name: Cllr Bob Barr OBE (Deputy Chairman)
Address: 2A Danebank Road, Lymm WA13 9DH
Telephone: 01925 751817
Email: rbarr@lymmparishcouncil.gov.uk



Name: Cllr John Bamforth
Address: 24 Elm Tree Road, Lymm, WA13 0NH
Telephone: 07795 831044
Email: jbamforth@lymmparishcouncil.gov.uk



Name: Cllr Kath Buckley
Address: 16 Hardy Road, Lymm WA13 0NX
Telephone: 01925 752439
Email: kbuckley@lymmparishcouncil.gov.uk



Name: Cllr Andrew Carter MP
Telephone:
Email: acarter@lymmparishcouncil.gov.uk



Name: Cllr Andy Cooper
Address: 4 The Paddock, Lymm WA13 9JQ
Telephone: 01925 756723
Email: acooper@lymmparishcouncil.gov.uk



Name: Cllr Graham Gowland
Address: 32 Wychwood Avenue, Lymm, WA13 0NE
Telephone: 01925 751599
Email: ggowland@lymmparishcouncil.gov.uk



Name: Cllr Joe Griffiths
Address: 9 Manor Road, Lymm WA13 0AY
Telephone: 01925 754651
Email: jgriffiths@lymmparishcouncil.gov.uk



Name: Cllr Ann Johnstone
Address: 3 Lakeside Road, Lymm, WA13 0QE
Telephone: 01925 755554
Email: ajohnstone@lymmparishcouncil.gov.uk



Name: Cllr Ian Marks MBE
Address: 80a Whitbarrow Road, Lymm WA13 9BA
Telephone: 01925 753051
Email: imarks@lymmparishcouncil.gov.uk



Name: Cllr Tim Martland
Address: 5 Dingle Bank Close, Lymm WA13 0QR
Telephone: 07595 837443
Email: tmartland@lymmparishcouncil.gov.uk



Name: Cllr Ben Selwood
Address: 44 The Crescent, Lymm WA13 0JY
Telephone: 01925 801160
Email: bselwood@lymmparishcouncil.gov.uk

Running club's "Santa Dash" raised £1,000 for two charities

THE annual Lymm Runners Santa Dash has raised £1,000 for two local food charities -Leave No one Behind in Lymm and Warrington Food Bank.

Chris Lees, race organiser and founder of the club said: "We're proud that our fun-run was able to go ahead so we could support these two worthwhile charities."

"We would like to thank everyone who took part and made this happen, despite the challenging circumstances."

The run traditionally signals the opening of Lymm Dickenson Christmas Festival and starts off with around 200 "Santas"

dashing down the main street to the applause of locals. The rest of the 5K distance then follows the trails and lanes around the village.

It finishes back at the main festival where happy runners still in their Santa Suits can enjoy the food, drink and other delights on offer.

Because of Covid restrictions, the event took place "virtually" with runners collecting their costumes beforehand, completing it in their own time and within their own social bubble.

Some 150 runners took part this year, choosing their own 5k. Lymm Runners are expecting The Dash to be back to normal for next December.



Established 1878
John Burrows & Sons
 Fourth Generation Independent Family
Funeral Directors
 Friendly & Professional Service
 Day or Night ~ J. Tandy
 The Old Smithy, Mill Lane, Lymm,
 WA13 9SE Tel: (01925) 752501
 Golden Charter
 Funeral Plans
 www.johnburrowsandsons.co.uk

Electric car charging point on 16th century cottage

PLANS have been submitted for an electric car charging point at a 16th century cottage at Lymm. The proposal involves Rivington

Cottage, in Higher Lane – the oldest parts of which date from the 16th century. But the cottage has been extended several times over the years and the charging point is

planned to go on a wall added in the 1970s. Borough council planners have been told the charging point will be scarcely visible from the road.

twentyfour seven design & print ltd

We supply and fit all types of signage: self adhesive graphics, glass, metal, wood, perspex, foamex plastic. Call or email for a free site visit.

01925240247 info@247print.net www.247print.net

Police disperse large group of lads playing football at rugby club during lockdown

POLICE in Lymm are urging parents to check up on their children after a large group of twenty "lads" were discovered playing football at the rear of the local rugby club during lockdown.

It follows ongoing problems in the village, with large groups regularly gathering on and near Lymm Cross or on land at Lymm High School.

During the incident at Lymm Rugby Club police found about 20 teenage lads playing football, who all "legged it" as officers arrived at the scene.

Meanwhile, the previous night Police saw a lot of youths

hanging around the Village near The Cross, some of which dispersed on arrival.

Others police spoke to appeared unaware of what they were doing was wrong.

Local PCSO Renshaw said: "I understand how difficult it is and how hard it is for everyone but we are in a lockdown and people need to be following the rules."

"Parents can I ask you to speak to your children and reiterate not meeting up in large groups and causing issues, this wouldn't be acceptable at any time never mind during a pandemic!"

Obituary

Wendy Dickenson

THE funeral has taken place of Wendy Dickenson, aged 80, of Hawthorn Road, Lymm, who died at home peacefully, with her family, on January 7.

Mrs Dickenson, nee Igoa-Smith, had lived all her life in Lymm. She is survived by her daughters,

Mandy and Tracy and her four grandchildren, Anthony, Emma, Ellie and Rhys.

The funeral was on January 21 at Altrincham Crematorium.

Funeral arrangements by John Burrows and Sons, of Lymm.

CLASSIFIED **Call 01925 631592 to advertise**

ACCOUNTANCY & BOOKKEEPING
BOOKKEEPER/ACCOUNTANT. Licensed for maintaining financial records, VAT Returns, Payroll Service, Management Accounts, SAGE Software Consultancy. **Contact: 07815 617914.** (S1)

AIR CONDITIONING
EXPERIENCED AND PROFESSIONAL Warrington-based 4 Seasons are air conditioning specialists. We install, maintain and repair air conditioning for business and homes. FREE call outs and special offers. **Contact John & the team on 0330 400 5471 or enquiries@4sac.co.uk or www.4sac.co.uk** (S4/20)

CARPET CLEANING
A1 STAINBUSTERS. A Warrington company cleaning carpets, hard floors, Upholstery (Leather + fabric) and curtains in situ. FREE quotes for domestic and commercial. Approved carpet cleaners for Hancock and Woods for over 10 years. **Call John on 01925 852088 or 07765 314080** (S1/21)

SIMPLY THE BEST CARPET CLEAN YOU will ever have. Cleaners UK Ltd. Est over 30yrs. Have your carpets & sofas beautifully deep cleaned leaving them fresh smelling & colour restored. Latest & best methods. Dry/steam. Leather cleaning, oriental rug specialist. Professional, reliable & affordable. **For more info call Neil Riley on 01925 264989 / 07831 336060 www.cleaners-uk.net** (S7/21)

CAR SALES

PARKVIEW
CAR SALES

We buy and sell
QUALITY CARS
Best price paid

Telephone Peter on
01925 575737 /
07957 545479

23 Padgate Lane
Padgate, Warrington
Cheshire, WA1 3RS

(S1)

CLEANING SERVICES

arleys angels

- Spring Clean Specialists
- Presenting your home for sale
- Moving house
- After building work cleans

01925 266834

... because you're worth it!

(S1)

SIMPLY THE BEST CARPET CLEAN YOU will ever have. Cleaners UK Ltd. Est over 30yrs. Have your carpets & sofas beautifully deep cleaned leaving them fresh smelling & colour restored. Latest & best methods. Dry/steam. Leather cleaning, oriental rugs specialist. Professional, reliable & affordable. **For more info call Neil Riley on 01925 264989 / 07831 336060 www.cleaners-uk.net** (S7/21)

ELECTRICAL CONTRACTOR
TRUST PROPERTY ELECTRICAL SERVICES. NICEIC Part P Approved Contractor. All Electrical work undertaken. Inspection & Testing & PAT Testing. All work certified & guaranteed. **Call Tim on 07754409906 or 01925 601055** (S3/21)

GARDENING SERVICES



- All aspects of tree surgery
- Stump grinding
- Waste removal
- Locally based
- Free quotation

Beechwood
Industries

www.beechwoodindustries.co.uk
01925 860544

(S1)

HANDYMAN

HANDYMAN &
PROPERTY SERVICES

CALL NEIL ON
07813 201850 or
01925 757905

www.handymanlymm.co.uk
handymanserviceslymm@hotmail.co.uk

Find us on Facebook

(S1/20)

HOLIDAY HOME

HOLIDAYS IN SNOWDONIA
4 STAR BUNGALOW SLEEPS 6+

Snowdonia North Wales, voted best National Park in Europe, visit Harlech Castle, scenic coastline, golf course, picturesque walks and cycling. Conservatory, large sunny garden.

Upto 10% off when you book a week

Further info contact 07867935728 or email clstewart459@gmail.com

(S11/20)

HOME SERVICES

ATLAS
Your friendly local independent



PEST CONTROL

Affordable, professional, guaranteed service. Fully insured, fixed prices - no surprises once on site! Discrete vehicles, no embarrassing signs
07999 487 925 / 01925 445 222
www.atlas4u.co.uk

(S11/20)

MORTGAGES
INDEPENDENT MORTGAGE ADVICE. For local, impartial and professional advice on all aspects of mortgages contact Darren Simpson at Amathus Financial Services on **07708 975122 or 01925 399999** (S11/20)

OPTICIANS
ADCOTT OPTICIANS. State of the Art opticians in the heart of Lymm Village. Comprehensive sight tests and a wide choice of spectacles tailored to you, whatever your budget. **01925 757075** (S11/20)

PAINTING & DECORATING
BENJAMINS PAINTERS AND Decorators. 20 years professional experience in commercial and domestic decorating, wallpapering, coving, interior and exterior work. **Telephone 07837 452514 or 01925 755198.** (S4/21)
BRUSH UP GIRLS. Female Painter and Decorators covering Warrington and surrounding areas Professional quality work assured No job too small Call today on **07554 486 626 or find us on Facebook** (S3/21)

PHOTOGRAPHY
FAMILY & PET PORTRAIT PHOTOGRAPHY Lymm based Andrew Collier Photography specialises in family and pet portrait photography using Lymm locations as a backdrop. Personal service with beautifully made frames and albums. **Call Andrew on 01925 471091 or visit www.andrewcollierphotography.co.uk** (S4/21)

RE-UPHOLSTERY



RE-UPHOLSTERY
CURTAINS • BLINDS

FREE MEASURING & FITTING
TEL:(01925) 756388
www.orchardsoftfurnishings.co.uk

(S11/20)

TAXI / PRIVATE HIRE

Horn's

Airport Transfer & Taxi Specialists
CALL MARTYN: 01925 751761
MOBILE: 07881 786250

(S9/20)

PAYROLL
WHY TRY TO BE A PAYE EXPERT? Watkinson Black can provide a cost effective payroll service, releasing you to concentrate on your business. **For further details please phone: 01925 413210 or e-mail: info@warringtonaccountants.co.uk** (S1)

WINDOWS & GLAZING
LYMM WINDOWS & CONSERVATORIES LTD, BY NEIL COPELAND. Specialist in uPVC double glazing windows, doors, porches, conservatories, also fascias and guttering. FENSA registered. All work guaranteed. **Tel: 01925 756138 / 07961 361550.** (S3/20)

TYRES

ENERGREEN Centre of Excellence

Express

Mobile Tyres

Local Family Business. Est 1997

01925 810000

www.expresstyres.co.uk

Order Online Today!

Branded & Budget Tyres
Cars, Vans, 4x4's, Caravans
Light Commercial
& Performance Vehicles

The tyre service that comes to you at home or your place of work

No Call Out Charge!

(S1)

Lymm Life

Classified Advertising

To advertise
in the classified
section from
as little as

£15+vat

Call us now on

01925
631 592

The North West's leading supplier of concrete

www.barrowmixconcrete.com

BARROW - MIX

1984-2019
35TH YEAR
ANNIVERSARY



FREE SITE SURVEY

6 DAY SERVICE

All areas covered

Free barrowing service

Only pay for what you lay

From half a cubic metre upwards

Levelling/laying service if required

(minimum charge)

We can supply

C25, C30, C35 Fibre Reinforced



VISA

MasterCard

Maestro

BSB

Call NOW for a FREE quotation
01565 734111 or 01942 722629