

Culcheth *Life*

Magazine

ISSUE 205 | APRIL-SEPTEMBER 2020
FREE EVERY MONTH

CULCHETH • CROFT • GLAZEBURY • BIRCHWOOD AND SURROUNDING AREAS

Dootsons
SOLICITORS

See main ad
Page 8

23 Jackson Avenue
Culcheth

0845 330 5700



 CHESHIRE UNDERFLOOR
HEATING SERVICES



01925 594609

W: cheshireunderfloor.co.uk

E: info@cheshireunderfloor.co.uk

Lockdown Prom

Pages 12 & 13

U

urban

BUILDING PROJECTS LTD

Extension &
Building Renovation
Specialists

Tel: 01925 730888

www.urbanbuildingprojects.co.uk

All the latest news: www.culchethlife.com

Editor
Gary Skentelbery

Production
Paul Walker

Advertising
James Balme
01925 631592 opt 1

Editorial
01925 631592 opt 2

Email
info@culchethlife.com

Websites
www.culchethlife.com
www.frodshamlife.co.uk
www.lymmlife.co.uk
www.warrington-worldwide.co.uk
www.warrington.tv

Address
New Media Centre
Old Road Warrington
WA4 1AT

Culcheth Life is published monthly by Orbit News Ltd.

The contents of this magazine are fully protected by copyright and nothing may be reprinted or reproduced without prior permission of the publishers.

The publishers are not liable for any statement made or opinion expressed by third parties in this publication.

Printed by TwentyFourSeven

Editor's Comment



IT'S hard to believe it has been five months since we published an issue of Culcheth Life magazine due to the problems caused by the COVID-19 pandemic which has impacted on all our lives.

It was a tough decision to stop publishing in print but one we had to make due to the fact many of the businesses who provide our financial support to produce a free publication had to suspend trading, or cut back on their activities.

Even now in the "new normal" it is extremely difficult. Fortunately with our robust online activity via **warrington-worldwide** we have managed to keep the wheels turning and activity online has more than doubled in recent months.

While it has been extremely difficult times for many it has been rewarding reporting on all the inspirational people and organisations who have risen to the many challenges we face.

It is difficult to comment on the COVID-19 situation as whatever I write now could be over taken by events, with local cases again on the rise and health chiefs warning people against complacency since lockdown restrictions were eased several weeks ago.

We have been updating our website on a near daily basis with all the latest information but with variable reporting by Public Health England and the reporting methods, especially relating to deaths, changing, this is proving more and more difficult. Due to the

amount of feedback we know this service has been well received in the community and we will continue to update to the best of our ability, working with the local authority and hospital.

For all the latest news check out our website at www.warrington-worldwide.co.uk

With the risk of local lockdowns being re-imposed if figures continue to rise, it is again worrying times

for many local businesses.

As always if you can shop local and support local businesses please do and if you are a local business looking for more clients, please consider your local publication.

We are here to help and support you the best we can, whether that be in print or online.

Until the next time – stay safe and shop local!

Deadline for the October issue of Culcheth Life is September 15



CAMPBELL CROSSLEY & DAVIS
Licensed Insolvency Practitioners

Constructive solutions to debt
for companies and individuals.



Ian Williamson
M: 07703 529212
Roger White
M: 07946 820299

www.campbell-crossley-davis.co.uk



Making it easier for your business to be successful

We care about you

You're a hard working entrepreneur and you need an accountant who does more than just tick the boxes.

You need a professional

Every one of our highly competent, skilful and professional people is here to help you.

You're our number one priority

You're more than just someone we prepare accounts for, the success of your business means everything to us.

Are you looking to make your business life easier?
Speak to one of our experts:

01925 761 600

or visit us at: stylesandco.co.uk

styles and co
chartered accountants

Courtyard Carpets

Opening Times:
Monday to Friday 9:30am - 4:30pm
Saturday 10am - 3:30pm



Full House Deal Only
£699 !!!

Discounts on LVT Flooring



#MODERNGREY
BASED ON 2 BED STAIRS LANDING
AND LOUNGE WITH CUSHIONED
10MM UNDERLAY

Call in store to find your perfect flooring solution.
Carpets, Vinyls, Karndean, Laminates, Screeding, Rugs

1st for Service
1st for Quality
1st for Choice

The Old Telephone Exchange, Common Lane, Culcheth, WA3 4HA
01925 555 820 | sales@courtyardcarpets.com
www.courtyardcarpets.co.uk

Culcheth pupils' 90mph model rocket car

PUPILS at Culcheth High School, Warrington have put their team building skills to the test thanks to a donation from a building company towards the Race to the Line Model Rocket Car STEM Challenge.

The national competition, run by The Learning Partnership (TLP), is open to schools across the country and sees Year 7 pupils building model rocket cars to race across the playground. The aim is to get youngsters engaged with Science, Technology, Engineering and

Mathematics (STEM) subjects.

Taylor Wimpey North West donated £250 towards the entry fee, ensuring youngsters at the school were able to participate in this unique competition.

Schools had until April 30 to submit their entries for the school

qualifying round. But because of the Coronavirus outbreak, The Learning Partnership made the decision to cancel any face to face events and finals for the remainder of the UK 2019-2020 season.

The competition in school was very fierce with the winning cars reaching 42 metres per second – over 90 miles per hour!

Beth Andrews, science KS3 co-ordinator at Culcheth High School Community Campus, said: "The pupils had a fantastic time building their rocket cars and were really engaged with the challenge.

"We're committed to encouraging our students to think

creatively, as well as teaching them all of the unique experiences and opportunities that STEM has to offer, so donations such as those from Taylor Wimpey are hugely important to us."

Stuart Craig, sales and marketing director at the company said: "As a responsible homebuilder, we are proud to be able to support these kinds of initiatives. It's crucial that young people in our communities are given the opportunity and drive to learn and develop their skills.

"We'd like to wish Culcheth High School the very best for the qualifying stages of the competition."



Rotary clubs help provide PPE provision

ROTARY clubs, including Newton and District Rotary Club, who cover the Culcheth area, responded to the COVID-19 pandemic by helping provide funds to locally source and supply urgently needed Personal Protective Equipment (PPE) for front line workers at 120 Care Homes and 20 Hospices.



HUNTER HEALEY

CHARTERED ACCOUNTANTS

- Professional, approachable, affordable
- Accounts preparation & tax returns for individuals & companies
- Bookkeeping, payroll & vat
- Capital Gains, Estate Planning & Probate Work
- Business start up advice
- First meeting free of charge

Call Nigel Healey now on 01925 767222

Abacus House, 450 Warrington Road, Culcheth WA3 5QX

www.hunterhealey.co.uk



CULCHETH HIGH SCHOOL

THE BEST THAT WE CAN BE

Open Evening

Thursday 8th October 2020

Please keep an eye on our website for further details on format and timings

We look forward to meeting you all

Warrington Road, Culcheth, WA3 5HH

Phone: 01925 767587

www.culchethhigh.org.uk

#WeAreCHS



76% of students achieved a standard pass grade 4-9 in GCSE English and Mathematics

53% of students achieved a strong pass grade 5-9 in GCSE English and Mathematics

29% of all GCSE grades were grades 7-9

Campaigners gear up for new battle to save historic pub

CAMPAIGNERS fighting to save the historic Raven Inn at Glazebury, are gearing up for a renewed battle after spotting some people surveying the building.

A member of the group had a word with the surveyors and learned they work for Wilmslow-based Survey Systems.

But they were unable to shed any light on the reason for the survey.

Peter Sturman, of the Save the Raven group said: "As a result, we are ramping up our preparedness to battle to save the Raven for a second time."

"We have always been totally consistent in our determination to save and preserve the Raven. Also to vehemently oppose any development plans."

Mr Sturman said the campaigners were in a stronger position than last year when they managed to persuade Warrington Borough Council to designate the pub as an Asset of Community Value (ACV).

"It seems a little strange that another developer may be considering ripping up the Raven site for houses or flats. The ACV was granted on July 22, last year and remains in force for five years."

"In reaching their conclusion Warrington Borough Council (WBC) quite clearly refers to the Raven as "an operational public house" – not as a couple of flats, which may be something put forward in the future, as a sop to our arguments."

"The entire point of the ACV is

that it covers the entire building. It is the building that is so precious to our history and heritage, not just the façade.

"The ACV does not offer cast iron protection but it will be something WBC must take into account in any future planning application. We are confident WBC will take their own advice, when deciding upon any such planning application. Needless to say we will also need a raft of local objections, if it does get to that stage. Nearly 500 local residents opposed the previous planning application. The fact that our supporters immediately identified and spoke to the surveyors should serve notice that we are as committed to saving the Raven as we have ever been."

"The existence of the ACV, together with the incredible mobilisation of all our community, last time round, does put us in a much stronger position. Obviously we would have to see exactly what may be proposed – at present we need to prepare for the worst."

"We remain a positive option for the owners and a pretty good moral option. We have made two offers for the Raven, the second above current market value. We have been open to meaningful discussion right from the start of this process."



Campaigners pictured before lockdown.

Vehicle Adaptations

Wheelchair Hoist

Person Hoist

Transfer Plate

Push/Pull Brake/Accelerator

Hand Held Accelerators •
Left Foot Accelerators •
Pedal Extensions •
Seating Aids/Conversions •
Lifts •
Steps •

10 Way Secondary Driving Control

Electric Hatch Opener

0161 776 1594

office@basnw.co.uk

www.basnw.co.uk

BAS win Leaders in Vehicle Adaptation Installation award

LOCALLY based adaption specialists BAS North West are thrilled to have been recognised as "Leaders in Vehicle Adaptation Installation" by the SME News Business Elite Awards 2020.

The awards look to celebrate those enterprises who consistently provide the best services and products for their clients, allowing them to stand out within their representative fields.

The Business Elite Awards are handpicked by SME News Magazine and are based purely on comprehensive analysis and research undertaken by the wider group. SME News state "It provides us with a chance to promote talent on a truly UK-wide platform. This proven approach ensures that we

award on merit, not popularity and recognise the very best in business. We are award those that are succeeding in their endeavours, innovating, growing and improving." (SME News 2020)

Speaking on the award, Bill Bradley, Owner and MD of BAS North West said "I am over the moon that we have won this award and it is a reflection of the hard work put in by all of the team, including the engineers, office staff, management, marketing and everyone involved in making BAS a success. I am proud of the progress and development BAS continues to make each year and our goal is to constantly strive to bring innovative, unique and hopefully life-changing products to the market."



Former councillor publishes a thriller

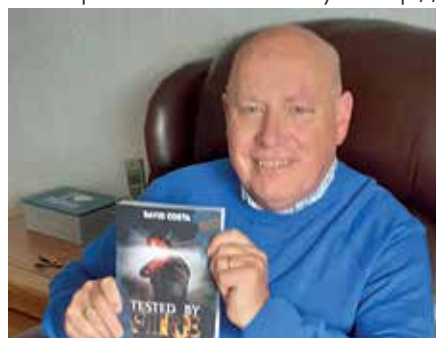
FORMER councillor Paul Campbell has fulfilled a lifetime ambition and published a book under the pen name of David Costa, titled *Tested By Fire*.

Paul, who lives in Culcheth and is a former member of Warrington Borough and Culcheth & Glazebury Parish Council, says he is "very excited" and is already working on the second of what he hopes will be a trilogy following the actions of the hero David Reece and his Black Ops team.

He said: "I have always had an interest in writing and have had a few poems and a short story

published under my own name. But this time I decided the author had to be a pen name so while sitting having a coffee outside Costa Coffee in Birchwood one day before the Lockdown the name came easily. I hope people get as much fun out of reading the book as I had creating it!"

Tested By Fire is available on Amazon in E-book and Paperback <http://mybook.to/TestedbyFire>



Police Trucam catches 14 speeders

A Police Trucam operation in the Common Lane and Warrington Road areas of the village caught 14 vehicles driving in speeds between 35mph-41mph. All the offenders were processed through central ticket office.

**FULLY FITTED
ROLLER
GARAGE
DOORS**

FROM **£895** * WAS **£1,354**
INC VAT

* Offer Valid For Openings Up To 2.4m Wide & Inc:
2 Remote Controls, 55mm White Slats,
Internal Manual Override

WHAT'S INCLUDED:

- ACOUSTIC & THERMAL INSULATION
- TWO REMOTE CONTROLS
- EXPERT MEASURING & FITTING
- 24 COLOURS AVAILABLE

**Made To Measure...
ROLLER GARAGE DOORS**

Garolla can save a lot of space inside your garage. Rolls up vertically into a box. Takes only 8 inches of head-room! Opens vertically so you can park up close to the door. Remotely open/close the garage even from inside your car.

CALL US TODAY

Phone:
01925 205 302

Mobile:
07537 149 128

GAROLLA
ROLLER SHUTTER DOORS
www.garolla.co.uk

CE Approved

“

A level Students made some of the strongest rates of progress across the whole country

Ofsted 2018

LIMITED PLACES STILL AVAILABLE FOR SEPTEMBER 2020

The Sixth Form Prospectus and application form is available online at:
www.lymmhigh.org.uk/sixth-form

LYMM SIXTH FORM

Artificial intelligence used to teach maths during lockdown

A local school is using an online platform powered by artificial intelligence (AI) to ensure pupils don't miss out on vital maths knowledge due to the coronavirus crisis.

Teachers at Culcheth Primary School say the Maths-Whizz programme has been a vital tool to enable children to practise their numerical skills from home.

The programme uses AI to mirror the behaviour of a human tutor through interactive learning content in order to tailor maths lessons to each child's individual needs. The school has used the virtual tuition platform throughout the lockdown period – and pupils are free to continue over the summer holidays.

Deputy headteacher Karen Rodgers said: "The quality and engagement of the Maths-Whizz learning content inspires our children to complete their tasks

and tests. This was particularly important during school closures to maintain engagement in maths learning. Each week I receive a weekly school report and it's easy to look at school, class, and individual reports. This level of reporting provided great visibility and insight on student learning during lockdown. The children learn each topic at their level, so therefore it caters to every individual's needs. The online support and advice has been a huge success at our school."

It is widely accepted that the COVID-19 pandemic, which has resulted in many pupils being out of school since March, will produce

substantial losses in learning that will be further impacted by the summer holidays.

Experts say maths knowledge normally regresses by two to three months over the summer break due to lack of practise. This loss of learning is known as the 'Summer Slide.' It means many schools

will potentially face disruption in September – with pupils struggling to catch up.

Research shows that just 60 minutes of online tuition per week over the course of a year can boost a child's maths ability by the equivalent of 18 months learning.

Neighbours celebrate winning £1,000 each on Postcode Lottery

TWO people at Lowton celebrated after winning £1,000 each thanks to their lucky postcode.

The Heath Field Close neighbours netted the windfall when WA3 2BU was announced as a Daily Prize winner with People's Postcode Lottery.

People's Postcode Lottery ambassador Danyl Johnson sent his well-wishes to the winners. He said: "What great news for our winners! Congratulations to them and I hope they go and get themselves a treat with their winnings."

A minimum of 32 per cent of ticket sales goes directly to charities and players of People's Postcode Lottery have raised over £600 million to date for thousands of good causes in Britain and beyond.

This draw was promoted by youth homelessness charity Depaul which has received over £10.8 million in funding from the players of People's Postcode Lottery.

Many good causes close to the winners have also benefited from players' support, and local charities can now apply for funding.





Culcheth Community Primary School
Where Learning is Fun!

New Reception starters September 2021

Individual visits warmly welcomed

Please ring school to arrange your socially distanced, safe visit.
Evening and weekend appointments available

Culcheth Community Primary School is a warm, welcoming, vibrant school that provides a first class education and a wide range of extra-curricular opportunities for all children. Full, flexible wrap around care is provided by school from 7.30am until 6pm

01925 764312

Further information can be found on our website www.culchethprimary.co.uk

"A caring environment in which pupils flourish", parents are 'overwhelmingly supportive of the school' and are 'delighted with the quality of education that their children are receiving' "
Ofsted June 2017

Our School Values



- Respect
- Teamwork
- Honesty and trust
- Friendship and kindness
- Creativity and courage
- Happiness, fun and enjoyment



Warrington School of the Year 2019

Warrington Sports Award

for 'The school that goes the extra mile'

School organises virtual Arts Week

UNFORTUNATELY due to recent events Culcheth Primary School's annual Arts week could not take place this year in school.

However, because of the success of a Virtual Sports day, they thought it might be a great idea to have a Virtual Arts week too!

Their theme for Arts week this year was Japanese Art and they chose Japan due to the Olympics games that were due to take place there.

The children (and staff) made Japanese origami, Japanese fans, performed fan dances, made

koinobori windsocks, drew art in the style of Hokusai, also took part in a Jujitsu workshop and all activities took place from home.

Staff were amazed by the amount of photos and videos they received and were pleased that so many children got involved and made such an effort.

Headteacher Amanda Dodd said: "A big thank you to Miss Wardle for all her efforts and making it such a great success".

Picture shows Kian Sturgess (Reception) and Lucinda Burns (Year 6).



Enrol now for an adult course at Warrington & Vale Royal College

With the new academic year fast approaching you may be considering learning a new skill or studying for a qualification.

Don't delay, apply today!

In this rapidly changing world, the need to add additional skills to your CV has never been so important. Each year, we see hundreds of adult students study with us across a number of subject areas, and there is no reason for this year to be any different. We are still offering all of our usual courses, plus, we have even added some new subjects to our offer including many

that can be studied online from the comfort of your own home.

Our enhanced our Adult Course Guide includes even more part-time and full-time, leisure and professional courses. So whether your dream is to become an engineer, counsellor, photographer, florist, midwife, personal trainer, or even to run your own business - we've something to suit you. At Warrington & Vale Royal College we know that returning to college is a big decision, which is why we are here to support you every step of the way.

IT'S NOT TOO LATE TO APPLY!



Apply online at wvr.ac.uk or call **01925 494494**.



Warrington & Vale Royal College



Start something new, for you...

Adult full-time & part-time, higher education, professional & leisure courses at Warrington & Vale Royal College.

Enrol now for September!

Enrol online, over the phone or call into our Warrington Campus. Open Monday, Wednesday & Thursday, 10.00am - 7.00pm.



 wvr.ac.uk

 **01925 494400**



Warrington & Vale Royal College





We are here to help when relationships break down

- Divorce and Separation
- Financial issues
- Children
- Cohabitation
- Civil Partnerships
- Change of Name
- Domestic Violence
- Pre Nuptial and Cohabitation Agreements



Dootsons
SOLICITORS



23 Jackson Avenue, Culcheth

01925 765212

Email: famis@dootsons.co.uk

www.dootsons.co.uk

CULCHETH • LEIGH • NEWTON

Culcheth Libr

CULCHETH Library has reopened as LiveWire moved into Phase 2 of reopening library sites following closures enforced by the Covid-19 pandemic lockdown.

The new opening hours for Culcheth Library are:

- Monday: 2pm to 6pm
- Thursday: 12pm to 4pm
- Saturday: 9:30am to 1pm

These new reduced opening hours are in line with guidance and designed to help ensure the safety of customers and staff at the site. The times are not permanent and will continue to be monitored.

LiveWire, the community interest company that manages library services in Warrington on behalf of Warrington Borough Council, say the procedures put in place to safeguard the safety of customers and staff has worked very well since the first seven libraries were reopened earlier this month.

If all continues to go to plan, the next phase of library reopening will see the remaining four libraries – Birchwood, Padgate, Penketh and Westbrook reopen in September and October.

Emma Hutchinson, Managing Director of LiveWire, said: "We are so pleased to be able to reopen Culcheth Library, following the successful reopening of seven of our other libraries across Warrington.

"Staff have worked very hard to put in place a range of safety measures at the library, and we can't wait to welcome the people back as we know how important this service is to the local community.

"Culcheth Library is a fantastic example of how LiveWire and the dedicated Friends group can work together to promote and grow the library service – and we thank them and Warrington Borough Council for all their support during the past few months. And thank you to our customers for their patience during the period we were closed."

Cllr Tony Higgins, cabinet member for leisure and community,

said: "Culcheth Library is well-used and valued by local people, so I'm delighted it is opening its doors once more. It's great news for the community and the latest success story in our ongoing work to safely re-open every library in Warrington.

"There is a real commitment from the council, LiveWire and the community to work together towards the safe re-opening of our libraries. I'm delighted that this work is paying off, and I'm looking forward to the re-opening of our remaining libraries in the near future."

Councillor Ben Alldred, the chair of the Friends of Culcheth Library (FoCL), said: "We are delighted for the reopening of Culcheth Library. Although FoCL cannot currently restart all the activities taking place before the pandemic, we will be supporting the library to welcome back local residents. We want to see our library as well used as possible."

The reopening of libraries centres on the safety of customers and staff, and are aimed at giving customers the confidence to borrow books in a friendly, safe and hygienic manner.

Health and safety measures put in place included social distancing for customers and staff, one-way systems around parts of the buildings, hand sanitiser at entrances and exits and the quarantining of books for 72 hours after they are returned.

The library service has seen a huge increase in the number of e-books borrowed during the closure period, and the focus on the digital offer will continue. Also being expanded is the Library at Home offer for vulnerable customers, and a new Order and Collect service.

Other key points to the reopening

Kitten charity will not lose out thanks to donations

THE annual "ladies day" held at Winwick in aid of charity group Kitten Carers could not take place this year because of COVID-19.

But organiser Debby Hughes was determined the charity should not lose out.

She asked family, friends and people who usually attend the event for a donation and as a

result £250 was raised to help the charity, which cares for cats and kittens in need of help.

Debby said: "I would like to thank everyone who donated and hope in 2021 we will be able to have ladies day again and make it bigger and better."

It would have been the fifth ladies day this year



Last year's event.

Library reopens

of libraries are:

- There will be no charges for overdue books and other items issued from 1st March.
- Items on loan have had their loan period extended until 30th September.
- Social distancing in all areas of the library to keep both customer and staff safe.
- Restrictions on the number of people accessing the library at any one time and the duration of visits will be limited.
- A contactless returns and issue process.
- New one-way systems around parts of library buildings will be in operation, with floor markings and directional signs.
- All returned books will be quarantined for 72 hours before being returned to the shelves for people to loan.

For more information on the reopening of libraries, plus a list of FAQs for customers, visit <https://livewirewarrington.co.uk/library>



Culcheth Beer Festival cancelled

THE annual Culcheth Beer Festival organised by New & District Jubilee Rotary Club has been cancelled due to the COVID-19 pandemic.

The event was scheduled to take place in September but "with great regret" organisers have decided to cancel this year's event on current government advice.

Over the last nine years the annual event has raised over £100,000 enabling Rotary to support a wide range of local, national and overseas charities, together with vital emergency support for international humanitarian disaster relief organisations.

Organisers look forward to seeing regulars in 2021.

The Gardening Guide



“Give evergreen hedges and topiary a final cut so they present a nice sharp profile throughout the winter.”

Simon Fox, Plant Area Specialist

- Make sure that pests such as slugs and snails and diseases such as mildew are dealt with as soon as they are seen
- Fruit trees can be planted now as they benefit from the warm soil and the cool air
- When the autumn rain arrives fertilise your lawn with a slow release autumn feed
- Reduce watering and feeding in preparation for the winter period when most plants go dormant and just need keeping moist

Bents Garden & Home, Warrington Road, Glazebury, Cheshire WA3 5NT. 01942 266300. Check online for seasonal opening times.

For the latest events and online shopping visit bents.co.uk



Need IT Support at Home?

- Skilled and Friendly Technicians
- PC and Laptop Support
- Home Visit or Remote Dial-in
- Antivirus/Malware Check
- Unlimited Support Time



Ask for Ethan, Josh or Mark



Call our Team: 01925 251143

sales@aspire-computers.com | www.aspire-computers.com



From playing golf with dinosaurs and dining in delicious eateries...



...to finding exciting discoveries for all the family.

Bents Garden & Home, Warrington Road, Glazebury, Cheshire WA3 5NT. 01942 266300. Check online for seasonal opening times.

For the latest events and online shopping visit bents.co.uk



Call us on: 01942 607250

www.elbfireplaces.co.uk

70 Twist Lane, Leigh, Lancashire WN7 4DP

Fire Surrounds, Stoves, Gas & Electric Fires

Established 30 YEARS

No need to change your carpet - made to measure fireplaces

Over 75 displays over 2 floors

Live wood burning stove on display



Is your conservatory too cold to use in Winter? Why not install a stove?



Seven-year-old girl gets on her bike to support NHS workers

A seven-year-old Culcheth girl completed a 20 mile cycle challenge raising over £1,800 to support NHS workers.

Freya Booth, supported by family, friends and neighbours had nearly raised £1,000 before even starting her challenge on May 16!

Mum Helen Booth said: "Freya and I were sat chatting about COVID-19 and the changes it's made to her life and we spoke about the NHS and about the Virgin £5 for 5k exercise challenge

she completed last month.

"As a family we've sadly been affected by the virus and Freya wanted to find a way of donating her own savings whilst raising more money for those caring for COVID-19 patients.

"She's always had a passion for cycling and has been clocking up her miles, most days, since

lockdown. She wants to take on the challenge for the NHS, riding 20 miles (32k) within a few hours."

Freya had originally intended to try and raise £100 but has

smashed that target.

Neighbours supported her by putting banners and posters up in their windows and clapped her home.



Parish councils to oppose Parkside plan at inquiry

The plan put forward by St. Helens Borough Council to develop the land at the site of the former Parkside colliery into a warehousing/distribution site has been 'called in' by the government, meaning that a public inquiry will be held to consider this. A new link road running from the site to access junction 22 of the M6 via the A579 (Winwick Lane) has been proposed in association with this plan, and this will also go to public inquiry on a date yet to be made known.

It is feared that this link road will attract a multiplicity of further similar developments alongside it by transport/distribution companies wishing to take advantage of its proximity to the motorway network for both north/south (via the M6) and east/west (via the M62) travel.

Croft Parish Council objected to these plans and, alongside Culcheth and Glazebury Parish Council, has commissioned a planning consultant to represent them at the inquiry and to put the case against these developments. They believe that the proposals have a regional dimension with a danger that our villages will be overcome by the concentration of distribution warehousing turning into an unplanned regional distribution hub.

Croft Parish Council News



Norman Partington
(Chair)
01925 765144
normanpartington@gmail.com



Carole Thewsey
(Deputy Chair)
07742 567055
cas.t@hotmail.co.uk



Merrill Cummerson
01925 764127
merrillcummerson@yahoo.co.uk



Keith Bland MBE
01925 766641
keithbland1@gmail.com



Martyn Griffiths
07982 110490



Valerie Allen MBE
01925 767274
val@valallen.co.uk

Covid-19

The parish council meetings for March and April were cancelled due to the Covid-19 lockdown, but were resumed and held remotely in May, June and July. Meetings will return to being held at Croft Memorial Hall as soon as guidance indicates it is safe to do so. Full details of all meetings are available on the website www.croftparishcheshire.org.uk.

Unfortunately, this year's Christmas lights switching-on event will not be taking place as an event management plan submission deadline is imminent and at present there remain restrictions on organising and holding gatherings. The parish council will still be arranging for a Christmas tree and lights to be on display in the usual location.

Croft Playing Field

The playing field was closed from 24th March according to the government's Covid-19 guidelines, and re-opened on 14th May but with the children's playing equipment still closed. The play area remained closed until early July, when it was reopened on the basis of usage limited by health guidelines.

M62 Junction 11 Motorway Service Area

A planning application has been submitted to Warrington Borough Council to build a motorway service area at junction 11 of the M62, the Birchwood exit. It includes a plan for a 100 bedroom hotel. The target area is north of the M62, which falls within the Croft parish boundary.

Croft Parish Council believes this to be an unwanted intrusion into the green belt, only 6.2 miles away from Burtonwood services. A proposed service area at a motorway junction is likely to become a destination in its own right, with consequent implications for increased traffic flow.

A planning consultant has again formulated our objection to this proposal.

Traffic Problems

Once again the issue of commuter traffic speeding through the village has been raised with the police, who are expected to be addressing this with radar gun enforcement measures. Speed activated cameras are due to be installed on Heath Lane.

Fly Tipping

The parish council continues to battle with illegal fly tipping, which was particularly bad due to the closure of recycling facilities during early lockdown. The public are urged to be vigilant on this and report the details of anyone seen doing this to the police.

Residents may contact Croft Parish Council's Clerk on Email: croftparishcouncil@gmail.com
The Parish Council issues updates and information on Twitter: [@croftparish](https://twitter.com/croftparish)
Web: www.croftparishcheshire.org.uk



CULCHETH & GLAZEBURY

P A R I S H C O U N C I L



Culcheth Library, Warrington Road, Culcheth, WA3 5SL
 Phone: 01925 764 666
 Email: culcheth.clerk@btinternet.com
 Web: culchethandglazebury-pc.org.uk

YOUR PARISH COUNCILLORS

NEWCHURCH WARD



Ben Allred
ballred@culchethandglazebury-pc.org.uk



Jacqui M Johnson
 01925 763435
jmjohnson@culchethandglazebury-pc.org.uk



Margaret Webber
 01925 762617
mwebber@culchethandglazebury-pc.org.uk

GLAZEBURY WARD



Joan Grime
 01925 763631
jgrime@culchethandglazebury-pc.org.uk



Anne Roberts
 01925 763047
arobert@culchethandglazebury-pc.org.uk

CULCHETH WARD



Keith Bland
 01925 766641
kbland@culchethandglazebury-pc.org.uk



Sue Bland
 01925 766641
sbland@culchethandglazebury-pc.org.uk



Valerie Allen
 01925 767274
vallen@culchethandglazebury-pc.org.uk



Peter Holmes
pcholmes@culchethandglazebury-pc.org.uk



Frank Allen
 01925 765 017
fallen@culchethandglazebury-pc.org.uk

PARISH NEWS

We thank again our NHS staff and Key workers for their hard work and sacrifice. We also thank everyone who has helped our residents through these difficult times. Note that information and support is available on the Coronavirus homepage on warrington.gov.uk also on their dedicated coronavirus helplines 01925 442441 and 01925 442443

Many things are still to come, the Local Plan and the children's play area. We have yet to see further details of HS2. We, our MP, Councillors and Borough Council all oppose the Golborne Link. Planning has altered because of Coronavirus, so if you need help contact a Councillor. We continue to oppose plans which put more traffic on our local roads, take land out of the green belt and affect local businesses.

It is an asset to have countryside nearby and there is much concern from residents that this is respected. There is a need to follow the countryside code both in and outside our villages. Not to drop litter, light fires, cause damage or not pick up after your dog. Thank you to all who take time to look after our villages. Problems can be reported to the Borough Council or us.

The Police continue to monitor speeding and this is part of the work being done in Glazebury with respect to the unacceptable increase in lorries going through our villages. The police report to us every month and also information is on Facebook and through Cheshire Police Alert. We are also concerned about the safety of residents because of anti-social behaviour. The Police are aware of this.

We had to cancel Community Day and now we have decided that Christmas Market Day cannot go ahead due to the uncontrollable risks caused by the Covid-19 pandemic. Christmas Lights will go up but a decision on a formal "switch on" will be made nearer the time.

On August 3rd Culcheth Library reopened to limited times. These will alter as the year progresses. Times will be on the library and Livewire website. Thanks to the Friends of Culcheth Library for all their work, they will be updating us also on their website.

Last month our Parish Clerk, Mike Durrington, retired, after twelve years service. Parish Councillors, both past and present have appreciated his dedication and ability. We wish him a happy retirement. We welcome our new clerk, Mrs Tina Rogers-Smith, and wish her well. She can be contacted through the phone and email on this page. Also she can be contacted through any Parish Councillor.

Publication of Information

The Parish Council has adopted a publication of information scheme. Details of who we are, what we do and how the public can access information is published on the main notice boards, Common Lane, Culcheth and Culcheth Library and on our website:



www.culchethandglazebury-pc.org.uk

Students refuse to let lockdown spo

IN recent years, prom has become one of the main highlights for those finishing school. Whilst many may think this is just an American trend, this is now a rite of passage for British students and has been growing year on year.

The Dress Studio, prom specialists based near Culcheth, who opened in 2012, can vouch for this – they have seen growth every year and had to expand to keep coping with increased demand.

Girls start planning their dresses over a year in advance and excitement bubbles as they plan what transportation they will take to their special event, how they will wear their hair & make-up and..... However, 2020 has been quite different and when lockdown was introduced in March, prom plans came to a grinding halt. Everyone is in the same storm but all have different experiences, and it is safe to say it's been a disappointing year for Year 11 students. The joy of finally finishing the last exam, dreaming of endless summer plans with friends, perhaps the first holiday abroad without their families, the anticipation of results

day, and of course, prom, has all been put on hold. However, customers of the Warrington prom superstore, The Dress Studio, have been proving that Covid19 will not rain on their parade.

Holly Pirrie, the owner of the specialist boutique explained: "It has been heartbreaking to see the disappointment for so many of our customers but we have found that with restrictions easing, our prom girls have been taking matters into their own hands. They have still wanted their special prom moment and so, they have been arranging smaller together in their gardens & getting dressed up, as if it were the real thing.

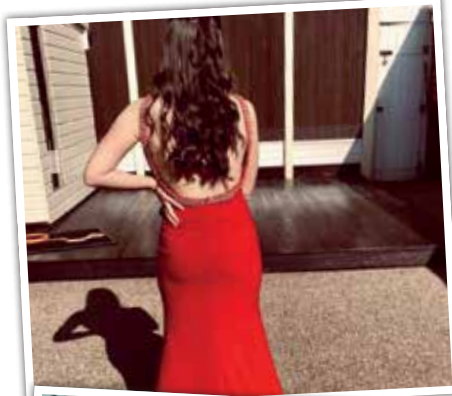
"We know it's not the same but 2020 has to be about making new memories and we can tell that our customers have loved these alternatives. The photos will be ones that

they can look back at fondly and know they made the best of their situation."

Prom may be just a party to many but the industry has been massively affected by lockdown. It is crippling, not just for retailers of dresses and suits, but for all the sectors involved. Prom is a critical event for many, small and local businesses. Holly explained: "Physically, The Dress Studio is a large store with over 30 fitting rooms, but the reality is that we are a small business. March – June is typically one of our busiest times due to the girls choosing their prom dresses, but this was completely cut short due to the pandemic, like most retailers, this is a difficult time for us. It is not just us that are feeling the affects of this – venues, transport companies (like limo hire), beauty salons, hairdressers, photographers, make-up artists, musicians, caterers... many are devastated by the cancellation or postponement of proms.

"Many schools have postponed

prom and we hope that all will consider this when restrictions ease. The students may be making the most of an unfortunate situation in their gardens now, but they definitely deserve that proper farewell. For now, we are super proud of customers for getting glam and making the most out of their dresses!"



il their Prom plans



Our underfloor heating systems are flexible enough to either be retro-fitted or installed as part of a new building project or renovation.

WHY CHOOSE CHESHIRE UNDERFLOOR?

- 
FRIENDLY
TEAM
- 
DETAILED
QUOTATIONS
- 
FULLY TRAINED
ENGINEERS
- 
FAST
TURNAROUNDS
- 
ONE STOP
SHOP

Get in touch

Our wide range of underfloor heating systems perform to the highest standard, whether for a single room or an entire property. Your enquiry will be treated with the highest level of care and attention.

Get in touch with our team today to discuss your underfloor heating project.

01925 594609 | cheshireunderfloor.co.uk

Cheshire Underfloor Heating Services
Suite 7, Oak Tree Barns, Hatton Lane
Hatton, Warrington WA4 4BX
E: info@cheshireunderfloor.co.uk

Warmup PRO
ACCREDITED
Warmup
Pro Installer

Nu-Heat
ACCREDITED & REGISTERED
Accredited
Nu-Heat Installer



We supply and fit all types of signage: self adhesive graphics, glass, metal, wood, perspex, foamex plastic.

Call or email for a free site visit.



 01925240247  info@247print.net  www.247print.net

Cancer survivor urges people to kick start fundraising

CANCER survivor Ben Hardman is calling on people to help tackle the devastating loss of funding for cancer research, caused by the COVID-19 outbreak.

Ben, who lives in Birchwood, has vowed to help Cancer Research UK continue its mission as it launches an urgent new appeal for donations to help get life-saving work back on track.

Following the cancellation of fundraising events like Race for Life, the charity is expecting a staggering £160 million drop in income in the year ahead.

As a result, Cancer Research UK has had to make the difficult decision to cut £44 million in research funding, but this is likely to be just the beginning.

After being diagnosed with testicular cancer aged just 23, Ben owes his life to advances in treatment.

That's why he's helping to highlight the threat the funding gap poses to future breakthroughs for cancer patients in Warrington and across the UK.

This is powerfully brought to life in a new TV appeal film. It shows a cancer patient on the verge of finding out whether her treatment has been successful, when the video pauses at the critical moment.

The message is clear – to save lives tomorrow, Cancer Research UK needs the public's support today.

By sharing his story, Ben, who is now aged 34, hopes to inspire people to donate now.

Ben, who works in IT for a large European company, was diagnosed with cancer in 2008. He went to see his GP after he began to experience breathlessness and was initially prescribed antibiotics for a suspected chest infection.

However, when the symptoms continued, Ben underwent further tests and was devastated to be told he had testicular cancer which had already spread to his lungs and lower back.

Ben, who lives in Birchwood, had three months of chemotherapy treatment followed by surgery.

He made a good recovery and returned to full health even completing the London Marathon in 2014.

He said: "My experience means I understand the importance of Cancer Research UK's work all too clearly. I was absolutely devastated to be diagnosed with cancer at such a young age. It's thanks to improved treatments that I've been given more precious time with my loved ones – so it upsets me to think about research being delayed and what this might mean for people affected by cancer in the months and years to come.

"By boosting funding now, we can all help to lessen the future impact on patients. So, I hope that people will be moved by the charity's determination to carry on beating cancer and give what they can. They could make a real difference to people like me."

Cancer Research UK's work into the prevention, diagnosis and treatment of cancer has been at the heart of progress that has seen survival in the UK double in the last 40 years.

Thanks to the generosity of its supporters, the charity currently funds around 50 per cent of all publicly funded cancer research in the UK.

However, as a direct result of the coronavirus pandemic, promising projects which could have the big answers to cancer are being held up.

Jane Bullock, Cancer Research UK spokesperson for the North West, said: "We're grateful to Ben for helping to underline the stark reality of the current situation.

"COVID-19 put so much of our research on pause, leaving us facing a crisis where every day and every pound counts.

"With around 41,000 people

diagnosed with cancer each year in the North West, we will never stop striving to create better treatments. But we can't do it alone.

"Whether they donate, sign up to Race for Life at Home or shop at our stores – with the help of people in Warrington, we believe that together we will still beat cancer."

Cancer Research UK was able to spend over £30 million in the North West last year on some of the UK's leading scientific and clinical research.

Donate now at cruk.org/give



WI members keep busy despite Covid-19

MEMBERS of Croft WI, although unable to hold their normal monthly meetings due to the Covid-19 pandemic, have kept busy in recent weeks.

They took part in Zoom calls, made a scarecrow for the "Lockdown Carnival" which took the place of the usual Croft Carnival, swapped recipes, recommended good books to read and made greetings cards, donating the proceeds to charity.

They also took part in "virtual netball" and generally kept in touch through their monthly newsletter.

Cheshire WI Federation organised a Zoom presentation to support one of the WI resolutions for this year – a call to increase potential stem cell donor registration.

There were over 150 participants in this call, in which Peter McCleave asked WI members to spread the word about a real need for stem cell donors. Mr McCleave is a 42 year old family man who had always been very fit, competing in Ironman and Triathlon competitions, but was then

diagnosed with Myeloma in 2017. His lifespan is now dependent upon him finding a suitable genetic match for stem cell donation. Increasing the pool of stem cell donors is now his mission.

Croft WI member Brenda Simm, herself a recipient of stem cell treatment which saved her life, listened with great empathy to Peter and participated in the Zoom call.

She is encouraging anyone in the age group 17-55 to take a test to become a stem cell donor, which may save the lives of many people, including McCleave. For further information and to send for a test kit go to website dkms.org.uk and take a look at the website www.PeterMcCleave.co.uk.

The Croft WI Scarecrow, constructed by Janet Hughes and her team won a Highly Commended Certificate and was displayed outside the Memorial Hall.

About 60 scarecrows were created for the Lockdown Carnival.

New house will replace old, disused property at Culcheth

PLANNING chiefs at Warrington have given the go-ahead for a new house to be built on the site of an old, disused property at Culcheth.

They agreed with officers that the scheme in Broseley Lane, which will involve demolition of the old house and outbuildings, would result in an improvement of the appearance of the area.

Culcheth and Glazebury Parish Council and a number of neighbours had opposed the scheme on the grounds it would result in an overdevelopment of the site, loss of privacy and a loss of

trees and wildlife habitats.

There were also concerns about a dangerous access to the site and flooding as it was claimed the rear of the existing property already had flooding issues.

Officers pointed out that the existing buildings were disused and in a poor state of repair. They did not add anything of aesthetic value to the area.

Nearby Leigh Golf Club had drawn attention to a covenant on the land, but officers said this had no planning relevance.



School holds virtual Sports Day



As Sports Day couldn't happen due to Lockdown, nothing was going to stop pupils from Culcheth Primary School.

They arranged a virtual Sports Day for all children and staff and even some parents joined in too. The classes all competed against each other and the winners were Year 2.

The children and staff took part in sprint, egg and spoon, sack race, magpies, basket throw, javelin, long distance, hurdles, football dribble, obstacle course and a fancy dress race!

Headteacher Mrs Amanda Dodd, and all the staff said they

were extremely proud of all the children and the efforts they made both at home and in the garden, dressing accordingly and even using props! They received so many videos and pictures.

Mrs Dodd said: "The staff had great fun too taking part and special mention should go to Miss Lea who did an excellent job organising this, it was Miss Lea's inspirational idea and she always promotes health, well being and fitness."



Birchwood College students achieve outstanding results

Birchwood College announced some outstanding Year 13 results despite the strange circumstances towards the end of this academic year.

The students' hard work and commitment was rewarded with some amazing Level 3 grades that will support many applications for further study and employment.

Of their BTEC Applied Learning entries a massive 76% were either a Distinction star grade or a Distinction grade with an overall pass rate of 100%.

The A-level pass rate, A*-E, was equally impressive with a 100% for all their A-level courses.

Headteacher Ms Mills said: "Congratulations to all of our students on these amazing results. They have all worked extremely hard whilst at Birchwood College and we are delighted that despite a difficult end to their academic journey with us, their grades really reflect their commitment and they have achieved the success they thoroughly deserve."

CLASSIFIED

AIR CONDITIONING

EXPERIENCED AND PROFESSIONAL Warrington-based 4 Seasons are air conditioning specialists. We install, maintain and repair air conditioning for business and homes. FREE call outs and special offers. **Contact John & the team on 0330 400 5471 or enquiries@4sac.co.uk or www.4sac.co.uk** (04/20)

CARPET CLEANING

A1 STAINBUSTERS. A Warrington company cleaning carpets, hard floors, Upholstery (Leather + fabric) and curtains in situ. FREE quotes for domestic and commercial. Approved carpet cleaners for Hancock and Woods for over 10 years. **Call John on 01925 852088 or 07765 314080** (11/20)

SIMPLY THE BEST CARPET CLEAN YOU will ever have. Cleaners UK Ltd. Est over 30yrs. Have your carpets & sofas beautifully deep cleaned leaving them fresh smelling & colour restored. Latest & best methods. Dry/steam. Leather cleaning, oriental rug specialist. Professional, reliable & affordable. **For more info call Neil Riley on 01925 264989/07831 336060 www.cleaners-uk.net** (03/21)

CHIROPODY

KATHRYN GRACE AND ASSOCIATES, D.Pod.M., M.Ch.S., HCPC registered. Chiropodists/ Podiatrists, 30 years experience, offering friendly and professional footcare, also Gait Analysis. Care home & commercial contracts are welcome. Culcheth based. **Tel 01925 762404 www.parkviewcentre.co.uk** (11/20)

CLEANING SERVICES

arleys angels

- Spring Clean Specialists
- Presenting your home for sale
- Moving house
- After building work cleans

01925 266834
... because you're worth it!

COMPUTERS

AED COMPUTER SERVICES. For all your PC servicing requirements including: Hardware repairs /upgrades, Software / Operating System re-installs, Virus removal, basic training: **Tel: 01925 766426, mobile: 07870 260657, email: enquiries@aed-cs.com, Web: http://www.aed-cs.com** (09/20)

HOME SERVICES

ATLAS
Your friendly local independent pest controllers

SUMMER SPECIAL INSECT TREATMENT OFFERS

WASPS INVASIVE BEES ANTS

Affordable, professional, guaranteed service. Fully insured, fixed prices - no surprises once on site! Discrete vehicles, no embarrassing signs
07999 487 925 / 01925 445 222
www.atlas4u.co.uk

PAYROLL

WHY TRY TO BE A PAYE EXPERT? Watkinson Black can provide a cost effective payroll service, releasing you to concentrate on your business. **For further details please phone: 01925 413210 or e-mail: info@warringtonaccountants.co.uk** (05/21)

TREE SURGERY

SAM WOOLSTENCROFT TREE SERVICES. Commercial and Domestic tree and Landscaping services. NPTC qualified, Safe Contractor approved and fully insured. Friendly and reliable, local family business. **Contact Sam 01942 673736 or 07565 534343** (11/20)

TYRES

CULCHETH TYRES

New and Part Worn Tyres
Motorcycle Tyres and Servicing
01925 766 380
www.culchethtyres.co.uk
Unit 1D, Taylor Business Park, Risley, WA3 6BL

WINDOWS & GLAZING

LEIGH GLASS LTD. For all of your glass requirements please contact. **Tel 01942 678440 Fax 01942 261728 email leighglass@hotmail.co.uk** (02/21)

Promote your business to thousands of local people with a

Culcheth Life Magazine

classified for just £72 plus VAT for six months.

For more details call **01925 631592**

pay less



if you
travel regularly

save money on
everyday bus travel
in & around Warrington
with our smartcard
or app

UNLIMITED
TRAVEL FROM

£37
A MONTH

Warrington's
own buses

