

Culcheth *Life*

Magazine

ISSUE 200 | NOVEMBER 2019
FREE EVERY MONTH

CULCHETH • CROFT • GLAZEBURY • BIRCHWOOD AND SURROUNDING AREAS

Dootsons
SOLICITORS

See main ad
Page 8

23 Jackson Avenue
Culcheth

0845 330 5700

Celebrating
200
Issues



Make it magical

Centre pages



Courtyard

01925 767000

www.courtyardhomes.co.uk

All the latest news: www.culchethlife.com

Editor's Comment



Editor
Gary Skentelbery

Production
Paul Walker

Advertising
James Balme
01925 631592 opt 1

Editorial
01925 631592 opt 2

Email
info@culchethlife.com

Websites
www.culchethlife.com
www.frodshamlife.co.uk
www.lymmlife.co.uk
www.warrington-worldwide.co.uk
www.warrington.tv

Address
New Media Centre
Old Road Warrington
WA4 1AT

Culcheth Life is published monthly by Orbit News Ltd.

The contents of this magazine are fully protected by copyright and nothing may be reprinted or reproduced without prior permission of the publishers.

The publishers are not liable for any statement made or opinion expressed by third parties in this publication.

Printed by TwentyFourSeven

A lot of hard work is going on behind the scenes to ensure this year's annual Christmas Market is a success.

Organised by Culcheth & Glazebury Parish Council, it is, as always a crucial time for local businesses.

With a lot of competition from online shopping plus evidence of people cutting back on spending due to Brexit uncertainty, things never get any easier for local businesses to survive.

It certainly never gets any easier producing a free community magazine which depends on local advertising to survive.

This month Culcheth Life celebrates its 200th edition and approaching 17 years of providing the local community with its only dedicated news outlet.

Like many we have moved with the times with an online presence via www.warrington-worldwide.co.uk plus social media platforms on facebook and twitter.

Over the past 17 years we have seen many changes in the village but looking back at issue one it is pleasing to see that many of those who welcomed us are still around and working hard in the community.

I suspect in the coming months and years we are all going to have to work a little harder to make our voices heard - but many hands make light work.

Meanwhile Congratulations to Culcheth & Glazebury Council for their endeavours to make the

Christmas Market event a success and as always we will continue to do our bit helping showcase what the village has to offer.

It is important that local residents turn out in force to support this community event, not just residents of Culcheth but from surrounding areas of Croft, Glazebury and Birchwood.

Finally a big thank you to all the local businesses past and present who have supported Culcheth Life - without you we couldn't exist - and don't forget to all local residents reading this "Shop Local" when you can!

We have a great local community with plenty on offer in the village, so let's use it before we lose it - and if there are any local businesses out

there looking at ways of generating more business, give Culcheth life a try.

We are much more than just an advert in a local magazine. We are literally connected worldwide and can showcase your business in a high quality publication read by thousands of local people and help you reach out to new customers in print and online!

Deadline for the December issue of Culcheth Life is November 12



CAMPBELL CROSSLEY & DAVIS
Licensed Insolvency Practitioners

Constructive solutions to debt for companies and individuals.



Ian Williamson
M: 07703 529212
Roger White
M: 07946 820299



www.campbell-crossley-davis.co.uk

Making it easier for your business to be successful

We care about you

You're a hard working entrepreneur and you need an accountant who does more than just tick the boxes.

You need a professional

Every one of our highly competent, skilful and professional people is here to help you.

You're our number one priority

You're more than just someone we prepare accounts for, the success of your business means everything to us.

Are you looking to make your business life easier?
Speak to one of our experts:

01925 761 600

or visit us at: stylesandco.co.uk

styles and co
chartered accountants

Courtyard Carpets

Opening Times:

Monday to Friday 9:30am - 4:30pm
Saturday 10am - 3:30pm



Full House Deal Only

£699 !!!

Discounts on LVT Flooring

Karndean
Polyflor
Project Floors
Harvey Maria
Sierra
LG
Eternity



#MODERNGREY
BASED ON 2 BED STAIRS LANDING
AND LOUNGE WITH CUSHIONED
10MM UNDERLAY



Call in store to find your perfect flooring solution.

Carpets, Vinyls, Karndean, Laminates, Screeding, Rugs

1st for Service
1st for Quality
1st for Choice

The Old Telephone Exchange, Common Lane, Culcheth, WA3 4HA
01925 555 820 | sales@courtyardcarpets.com
www.courtyardcarpets.co.uk

950 revellers quaffed 2,450 pints of beer

THE 9th Culcheth Charity Beer Festival, organised by the local Rotary Club at Culcheth Sports Club raised more than £12,500 for Rotary charities.

Some 950 revellers attended the event and enjoyed 40 great cask ales from 31 breweries, draught ciders, gin and tonics and sparkling fizz. Complimentary soft drinks were provided for drivers.

Five bands provided entertainment, the Hunter Healey Oomph Band, Evenfall, The Lazy River Jazz Band, the Over-the-Hillbillies and the Riff Riders.

A total of 2,450 pints of beer, 58 gallons of cider, 450-plus G&Ts and rum and cokes were

consumed, along with 80 bottles of fizz and wine and nearly 400 bottles of lager.

The festival was sponsored by Santander UK, MKM Builders, Hunter Healey Accountants, the Raj Indian Restaurant, Roofing Consultants Group, Broster's Farming and the CPS shopping centre.

Rotary is on the look out for new members in the Culcheth area and anyone interested should call Bernard Groom on 01925 733893



World class music in Culcheth

WORLD class musicians from the Halle Orchestra, and their friends, will visit Culcheth on Monday, November 25 for the 15th annual Roy Harrison Memorial Concert organised by the local Rotary Club.

The concert will consist of a selection of popular classics, each preceded by some snippets of background information from one of the musicians. After the interval a mystery "guest conductor" will appear to encourage audience participation.

Starting at 7.30 at Culcheth Sports Club (The Daten) there will be a bar for prior and interval drinks. Tickets, costing £12 each are available from 01925 764370 or from The Daten. All proceeds go to the Rotary Foundation, a major charity assisting local and international causes.



HUNTER HEALEY

CHARTERED ACCOUNTANTS

- Professional, approachable, affordable
- Accounts preparation & tax returns for individuals & companies
- Bookkeeping, payroll & vat
- Capital Gains, Estate Planning & Probate Work
- Business start up advice
- First meeting free of charge

Call Nigel Healey now on 01925 767222

Abacus House, 450 Warrington Road, Culcheth WA3 5QX

www.hunterhealey.co.uk



**BARBER
48**

LODGE DRIVE, CULCHETH

01925 766622

 @BARBER_48

 @BARBER48CULCHETH

**HAIRCUT & BEARD SHAPE
SPECIAL £20**

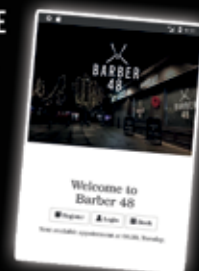
**OAP SPECIAL
MONDAY TO THURSDAY £9**

COMPLIMENTARY BEERS AND SKY TV FOR YOUR ENTERTAINMENT

WE ARE NOW EXCITED TO OFFER OUR EXCLUSIVE
PROFESSIONAL TREATMENTS TO BOOK VIA OUR

BARBER 48 APP!

FREE TO DOWNLOAD:



VISIT OUR WEBSITE: WWW.BARBER48.NEARCUT.COM

A piece of cake for puzzlers

A SPECIALLY themed cake provided Culcheth puzzlers with a treat as they celebrated the first birthday of Culcheth Jigsaw Library.

The jigsaw group runs every Monday from 2:00 to 4:00 at Culcheth Library - providing the opportunity for people to meet to help complete a jigsaw or borrow one to enjoy at home.

Christine Smith, a member of the Friends of Culcheth Library (FoCL), said: "When Culcheth Library was threatened with closure - a group of local residents and councillors worked together to keep it open and formed the FoCL - who took on board suggestions of groups and activities to offer at the library. The

Jigsaw Library has turned out to be an excellent addition and thanks to the local residents who volunteer to run it."

Julie Berry, one of the volunteers, said: "The jigsaw group is excellent fun and working together on a jigsaw often sparks great memories and lively debate. Donations of jigsaws continue to come in - which helps keep the stock of over 150 jigsaws fresh and appealing to all puzzlers. We welcome anyone to come along - it's all free - joining Culcheth Library is all that's required".





Call us on: 01942 607250
www.elbfireplaces.co.uk
 70 Twist Lane, Leigh, Lancashire WN7 4DP

Fire Surrounds, Stoves, Gas & Electric Fires

Established 30 YEARS

No need to change your carpet - made to measure fireplaces

Over 75 displays over 2 floors

Live wood burning stove on display

Is your conservatory too cold to use in Winter?
Why not install a stove?





Culcheth Day Nursery

Warrington Road, Culcheth, WA3 5HH

Established 25 years !

OUTSTANDING Ofsted award March 2019



- 2yr, 3yr, 4yr old Funded places (Free 15hrs ,30hrs & Tax Free Childcare)
- Full day care/Sessional Care Pre School rooms, Full day care Toddler Rooms & Baby room
 - Full Foundation Stage Curriculum provided
- Part time & Full time Places for children age 0-5 yrs

CULCHETH LINK CLUB, HOLIDAY CARE & BREAKFAST CARE

- Professional care by Qualified Staff with emphasis on fun
- For all children aged 4 - 11yr olds
- Collection from Culcheth Primary School & Twiss Green Primary School



Learning Through Play, The Fun Way



For Further details please call **01925 767615**
 or email enquiries@culchethdaynursery.co.uk
www.culchethdaynursery.co.uk



Planners approve new house on site of old farm

THE long-running saga of Eaves Farm House at Croft came to an end when Warrington planning chiefs gave permission for a new house to be built on its site.

Members of the borough council's development management committee decided the principle of residential development on the site in Cross Lane was acceptable.

They were told the design and size of the new house would be almost identical to the former farm house, which was believed to be more than 170 years old.

Despite its age, Cheshire Archaeological Planning Advisory Service – who had earlier expressed concern about the demolition of the house – now said there were no outstanding archaeological issues.

The house was demolished earlier

in the summer after it was decided it was structurally unsound.

It was then decided to defer a decision for more information after Croft Parish Council – which had originally opposed the demolition – expressed concern.

Officers said the principle of residential development, including its impact on the Green Belt, was acceptable, the design of the proposed house was acceptable and the living conditions of a neighbour would be protected.

There were no concerns over the safety of access to and from the site.



GAROLLA

ROLLER SHUTTER DOORS



Great For:
Space Saving
Kerb Appeal
Ease of Use
0800 468 1982

THERMALLY INSULATED ELECTRIC GARAGE DOORS

Garolla can save a lot of space inside your garage. Rolls up vertically into a box. Takes only 8 inches of headroom! Opens vertically so you can park up close to the door. Remotely open/close the garage even from inside your car.

- Acoustic & Thermal Insulation
- Brush Sealed Rails
- Pay on Completion
- Two Remote Controls
- 18 Colours Available



Free Disposal of Old Door!



Save **£459**

LIMITED OFFER - was £1354

NOW ONLY £895 INC. VAT & FULL FITTING

MADE TO MEASURE, CALL US NOW!

01925 205 302
07537 149 128

Phone Lines Open 7 Days a Week

- Offer valid for openings up to 2.6m wide & inc: 2 Remote Keys, 55mm White slats, Internal manual Override -



MADE-TO-MEASURE BLINDS & CURTAINS

- Automated Blinds Specialist
- Family Run Business
- Free Home Consultations
- Quality Workmanship
- Excellent Customer Service



Orders placed in November will be done in time for Christmas

08000 599 579

Unit 4, CPS Shopping Centre, 7 Common Lane, Culcheth, Warrington WA3 4EH

www.grovehomeinteriors.co.uk



Countess calls to help celebrate charity's 10th anniversary

SOPHIE, Countess of Wessex dropped in at the local centre of charity group Brainwave to celebrate the site's 10-year anniversary.

The Countess opened the centre at Birchwood in 2009 and since then it has helped many children with disabilities achieve greater independence by delivering a range of physical and educational therapies.

There was much to be celebrated as the Countess presented Natalie Preston with a Certificate of Appointment as an Ambassador of the charity.

Natalie who is living with cerebral palsy and has been attending Brainwave since she was two years old, recently climbed over The O2 Arena with Ollie Murs to raise money for the charity. So

far, she has raised over £18,000 for Brainwave.

The Countess also presented Phil Edge, former Brainwave CEO, with a Certificate of Outstanding Service. Phil, who recently retired from Brainwave, had been with the charity for over 33 years. He spent many of his years at Brainwave as a physiotherapist, helping hundreds of children with disabilities achieve their potential.

In recent years, Phil has been leading the charity as CEO but decided it was now time to pass on the baton. A new CEO will be joining the charity in the New Year.

The Countess of Wessex has

been president of Brainwave for many years. The UK charity does not receive any government funding and relies on voluntary donations

to run its three permanent centres in Somerset, Essex and Warrington.

To find out more about Brainwave, visit: brainwave.org.uk





www.amathusfs.com

Life changing mortgages

Looking for a mortgage? Need insurance?

Don't look too far...

we're a local firm who can provide you with impartial and professional advice

T. 01925 399999 E. info@amathusfs.com



Your home may be repossessed if you do not keep up repayments on your mortgage. Amathus Financial Services Ltd is an appointed representative of Sesame Ltd which is authorized and regulated by the Financial Conduct Authority. For mortgages we can be paid by commission, or fee of usually £395 or a combination of both.

Art exhibition

THE annual exhibition held by members of Culcheth Art Group will take place at the Culcheth Centre in Jackson Avenue on Friday and Saturday, November 29-30.

Paintings in various media will be on show and will be available to purchase and refreshments will also be available.

Culcheth Art Group are amateurs who meet weekly at the Culcheth Centre. New members are always welcome and anyone interested should call in at the exhibition or on any Thursday between 1pm and 4pm.





Croft Tiny Acorns
a Nursery & Forest School

"Croft Primary prides itself on providing a safe, secure, and stimulating environment for every child through a broad and balanced curriculum."

an exciting, happy, safe school where we build on the unique potential for and behind each child."

From tiny acorns, mighty oak you

*** NOW OPEN ***

Governor led nursery within Croft Primary School, Mustard Lane, Croft, Warrington WA3 7DG

- Provision for 2-5 year olds. 7.30am to 6pm including holiday care up to 11 yrs for 50 weeks per year
- Flexible, high quality early education
- Up to 30 hour funded childcare places available*
- Fully qualified staff

Please contact us for more information or to complete an application form.



tinyacorns@croftprimary.co.uk

www.croftprimary.co.uk

croft primary school warrington

@Croftschool

*subject to eligibility criteria







Glazebury CE Primary School and Nursery

Growing together at the heart of God's community

If your child was born between

1st September 2015 and August 2016

Then now is the time to apply for Reception places

You are warmly welcomed to come and view our fabulous environment and apply for places at our school based provision led by an experienced and **FULLY QUALIFIED TEACHER** delivering high quality early years education.

We provide:

- 2 years/3 years/4 years Nursery provision
- Flexible days - hours - mornings, afternoons or full days
- Options from 7.30am to 5.15pm
- Up to 30 hours funded places and 2 year old funded places
- Acceptance of childcare vouchers
- Options to buy top up sessions as required

Limited places available within school. Please enquire for availability.




Tel: 01925 763234

Mrs Holcroft
for further details Email:
Glazeburyprimary@ldst.org.uk
for an appointment.
www.glazebury.eschools.co.uk

We also invite you to:
MESSY PLAY for little ones

From 9.30-11am every Thursday

You will have access to Early Years provision and fun! Refreshments will be provided for young and old alike!
Cost: £2.00 per session.
All welcome.









Five storey car park for business park

A MULTI-storey car park with room for more than 1,000 cars and 12 motor cycles will be built on the Birchwood Park business estate following the granting of planning consent.

Members of Warrington's development management committee gave the scheme the green light after hearing that most of the new parking places would replace existing ones which are to be closed to enable other development to take place.

At present there are 880 parking spaces, all at ground level. After the multi-storey car park is built, the total number of spaces will increase by 127.

The five-storey building will be built on the site of an existing surface car park accessed via Reynolds Avenue or Griffith Avenue.

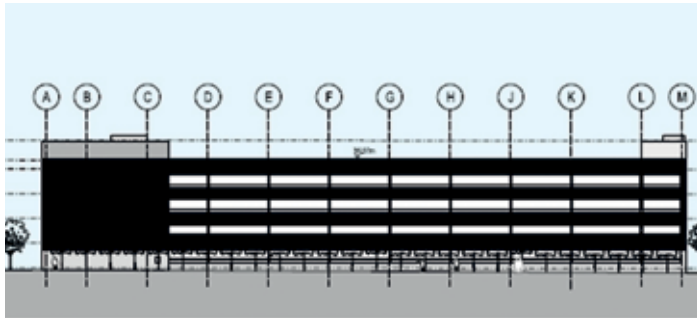
Birchwood Town Council did not oppose the development, but

raised concerns about speeding motorists within the business park.

The committee was told there were varying speed limits signed on the estate, 5mph, 10mph and 20mph, depending on the type of road. All have appropriate signage.

But to address the concerns of the town council it was suggested that fixed speed awareness cameras should be considered when the car park was constructed.

The multi-storey car park will not include spaces for the disabled as individual office buildings – including those not yet built – are required to have disabled parking in close proximity.





Newchurch Community Primary School

For parents whose children are starting school in September 2020.

Open Days

Friday 18th October 2019 at 9:30am

Tuesday 5th November 2019 at 2pm

Thursday 14th November 2019 at 7pm

Parents and children are invited to find out about the learning journey we provide at Newchurch in order to prepare our robins to fly. You will be given the opportunity to meet the Headteacher, staff and children on a guided tour of the school.

If this is not convenient, then just give us a call on 01925 763427 and we will arrange a mutually convenient time for you to visit.

Please contact the school office if you would like any further information. We look forward to your child becoming a Newchurch robin and welcoming you into the Newchurch family.



Glebeland, Culcheth, Warrington. WA3 4DX
 Telephone 01925 763427 email: newchurch_primary@warrington.gov.uk
 Website: www.newchurchprimary.co.uk

NEW SHOP NOW OPEN! NEW SHOP NOW OPEN!

NEW SHOP NOW OPEN! NEW SHOP NOW OPEN!

NEW SHOP NOW OPEN! NEW SHOP NOW OPEN!

Miz

Ex Department Store

Ex Department Store Goods sold to you at fantastic knock down prices!

Everything from Throws, Cookware, Slippers, Bags, Gloves, Everyday household items plus lots of accessories.

A real Aladdin's Cave!

If you're looking for stocking fillers for Christmas you should look no further than here, call in today and grab yourself a bargain!

**Unit 10 - CPS Shopping Centre
7-9 Common Lane, Culcheth, WA3 4EH**



NEW SHOP NOW OPEN! NEW SHOP NOW OPEN!



We will provide you with a no obligation quotation which will reflect the true costs.



- Sales Purchases Re-mortgages
- Declaration of Trust – to protect third party investors
- Transfer of Equity between Partners
- Equity Release
- The Government “Help to Buy Scheme”
- Auction Sales and Purchases
- Buy to Let Investment Purchases
- Shared Ownership Sales and Purchases
- Purchase of Re-possession Properties
- New Build Properties
- Probate Sales and Transfers of Property either to or between Beneficiaries

We are members of the Law Society’s Conveyancing Quality Scheme - the mark of excellence for the home buying process.

Dootsons
SOLICITORS



23 Jackson Avenue, Culcheth

01925 765212

Email: convs@dootsons.co.uk

www.dootsons.co.uk

CULCHETH • LEIGH • NEWTON

Make it Mag

Christmas at Bents has been unwrapped and this year’s beautifully themed magical wonderland displays unveiled.

Hundreds of customers joined Bents for the occasion and followed Father Christmas - who made a special guest appearance for the occasion.

Matthew Bent, Managing Director said: “Christmas has been a part of our family business for as long as I can remember and it never loses any of its charm or excitement, especially when we’re surrounded by such beautiful and inspirational displays.

“We have our very own team of set designers and joiners who work together to create our magical scenes and once again they have delivered another fantastic wonderland for our customers to enjoy.”

Bents were joined for the occasion

by Cllr Maureen Creaghan, Deputy Mayor of Warrington, who helped with the opening, and actor Daniel Jillings from Bents’ Charity of the Year, Once Upon a Smile who drew the raffle for two beautiful Christmas hampers.

Bents 2019 centrepiece, Make it Magical, is a stunning combination of blush pink, silver and white decorations and is just one of many expertly designed show-stoppers, which are full of inspiration and ready to be re-created at home.

Now that Christmas at Bents is open there is a full calendar of festive events planned at the Centre, starting with Father Christmas’ Arrival on Saturday 9th November at 10am.



It’s all happening on Christmas Market day!

IT’S all happening on Saturday, November 30 – Culcheth’s annual Christmas Market.

Organised by Culcheth and Glazebury Parish Council, the event will, as usual, see the official “switch on” of Culcheth’s Christmas Lights at 4.30pm, but the day’s events start at 11am and continue throughout the day until 5pm.

The village centre will be alive with festive activities for all the family.

There will be colourful gazebos, fairground rides and seasonal activities and fayres both indoor and outdoor.

Virtually every part of the village centre will be involved.

Culcheth Methodist Church in Ellesmere Road will have a Christmas Fayre, Santa’s Grotto, children’s crafts, Christmas Carols and craft display.

Lodge Drive will stage a market and fairground.

Common Lane near Sainsbury’s and CPS will also have a market and fairground as well as the Parish Council Stand and Radio Warrington. At the Parish Hall there will be a Fayre, Market and refreshments.

Jackson Avenue is not left

out of the fun. There will be an art exhibition and refreshments – which actually opens on the Friday - at the Culcheth Centre. The Scout Centre will be offering refreshments, children’s crafts and the Police Museum, along with a First Aid facility.

In Warrington Road, Culcheth Library will be staging a children’s Santa Hunt at 11 am and competition entries. At the Culcheth Arms opposite, there will be more market stalls, a hog roast and evening music.

And of course, all the village shops and eateries will be open with plenty of festive fare in Lodge Drive, Common Lane, Warrington Road, Church Lane and in the CPS Centre.

Parking will be available at the Village Club on Wigshaw Lane and at the Thai restaurant on Warrington Road.

Before the big day, leaflets are being distributed throughout Culcheth and Glazebury giving more details and, importantly, a map to indicate where all the attractions are – and also the WCs!

The day promises to get everyone in festive spirit – and hopefully give the village a pre-Christmas boost.

Magical at Bents



The Gardening Guide



“ Now the winter rains have arrived remember to ensure better drainage in your pots and containers. ”

Simon Box,
Plant Area Specialist

- There are a surprising number of plants that perform well over the winter period, often they are well scented - examples include Sarcococca, Hamamelis and Mahonia
- Areas of the border, that are currently empty, can be dug over and enriched with blended manure for next year's planting
- Cut down any herbaceous plants that have finished flowering and that do not have a strong winter structure. Weed and fork gently between them

Bents Garden & Home, Warrington Road, Glazebury, Cheshire WA3 5NT.
01942 266300. Check online for seasonal opening times.

For the latest events and online shopping visit bents.co.uk





Culcheth Community Primary School
Where Learning is Fun!

OPEN DAYS

20th Nov at 2pm and 6pm
Saturday 23rd Nov at 10.30am

Culcheth Community Primary School is a warm, welcoming, vibrant school that provides a first class education and a wide range of extra-curricular opportunities for all children. Full, flexible wrap around care is provided by school from 7.30am until 6pm

Individual visits to school warmly welcomed – please call in or phone to make an appointment

01925 764312

Further information can be found on our website www.culchethprimary.co.uk

“ A caring environment in which pupils flourish, parents are ‘overwhelmingly supportive of the school’ and are ‘delighted with the quality of education that their children are receiving’ ”
Ofsted June 2017

Our School Values



- Respect
- Teamwork
- Honesty and trust
- Friendship and kindness
- Creativity and courage
- Happiness, fun and enjoyment

Warrington School of the Year 2019
Warrington Sports Award
for ‘The school that goes the extra mile’






A GREAT PLACE TO
MEET • EAT • DRINK
SHOP & ENJOY

OPEN DAILY
from
12 NOON

Live Entertainment
Every Wednesday, Thursday
and Friday Evenings from
6th November

Bents Garden & Home, Glazebury, Cheshire WA3 5NT.
Telephone: 01942 266300.
Check online for seasonal opening times.
For the latest events and online shopping visit bents.co.uk




GARDEN | HOME | LIFE | FOOD

Words – and the impact they have on lives

PUPILS at Culcheth High School were encouraged to think about words – and the impact they can have on another person's life – at a World Mental Health Day event at the school.

Theme for the day was "Let's Talk about Saving Lives and Suicide Prevention."

Current statistics show that on average, 18 people die by suicide in Warrington each year.

But when a person is feeling suicide, simple things can make a big difference – such as someone asking how they are and taking the time to listen.

It was with this in mind that pupils were urged to think about the power of words and the impact the things they say may have on another person's life – in either a negative or positive way.

School assemblies throughout the week focused on how words can affect mental health and have the potential to detrimentally affect someone's life.

A key focus was a recent Jesy Nelson documentary (available on BBC iPlayer*) "Odd One Out" which focused on the online trolling Jesy received following her raise to fame on X-Factor, and the damage to her mental health done by this.

Research has shown that people who regularly include the "Five Ways to Wellbeing" in their lives are more likely to feel good about themselves.

These are:

- Connect - spend time with people who are important to you.
- Be active - at a level that suits your mobility and fitness.
- Take notice - be more aware of the world around you. Be curious.
- Keep learning - try something new or different, start a new hobby.
- Give - do something thoughtful for someone else, or volunteer your time.

The week's activities ended with a "Mental Health Fayre" in the assembly hall, where a range of services and agencies linked to the school were invited to highlight the provision available for young people. These included Culcheth High School Youth Health Champions, Children and Adolescent Mental Health Services (CAMHS), the School Nursing Team, Child Bereavement UK, Warrington Youth Service, Warrington LiveWire (using a rowing machine to demonstrate the link between physical and mental health), Youth For Christ, Catering Academy (who encouraged the link between eating healthily and positive mental health by encouraging students to cycle for a smoothie!) and Warrington Young Carers.



**Warrington
& Vale Royal
College**

OPEN EVENINGS

**Do you want to see what life is like here at
Warrington & Vale Royal College?**

Then come along to an Open Evening!

Wednesday 13th November 5.30 PM - 8.00 PM

Thursday 5th December 5.30 PM - 8.00 PM

You don't have to go far to get far... success starts here!

Open Evenings are a great way to explore our campuses. You will get to chat to current students and industry specialists, tour our top-quality facilities and discuss the best course for your chosen career.

Register now: wvr.ac.uk/openevenings



01925 494 494

@wvrcollege

Merry
Christmas

Treat the Curry
Lovers **IN** Your
Life to an Amans
Gift Voucher Buy
now to get 10% more*

*Quote magazine name
and edition

**BOOKINGS NOW BEING TAKEN FOR
CHRISTMAS & NEW YEARS EVE**

TRY OUR EARLY DINER MENU

Available all week excluding from 20th December until 6th January.

Don't get left behind and dissappointed,
reserve your festive bookings
as soon as possible.

**FREE BOTTLE OF BUBBLY
OR GIFT VOUCHER** for organiser

If you book before 5th December 2019, further T&C apply.

LIKE US
SHARE US
FOLLOW US

BESPOKE
PARTY
MENUS

Speak to us to tailor make your party menu.

Amans
LOWTON

01942 72 72 62

239 Church Lane, Lowton,
Warrington, WA3 2RZ

www.amanslowton.uk

Culcheth Sunbed Centre

HAPPY HOURS 10am till 11.45am Everyday!

- All Sunbeds Fitted With New Tubes
- Special Minute Plans Available
- Pro Tan Accelerator Creams Available
 - Loyalty Schemes
 - Gift Vouchers Available

Open: Mon-Fri 10am-7pm & Sat 10am-3pm

For Enquiries Call 01925 765695

493 Warrington Road, Culcheth, WA3 5QU

(Free Parking Available in Sainsburys Car Park Opposite Shop)

The Cherry Tree



Receive £5 off your food bill when you sign up to our newsletter at www.sizzlingpubs.co.uk

Book now for Christmas, Festive menus from £11.99

www.sizzlingpubs.co.uk

35 Common Lane, Culcheth, Warrington. WA3 4EX
01925 762624 email: bun212199@mbplc.com

Unsightly signs removed at long last!



UNSIGHTLY “no ball games” signs have at long last been removed from the Newchurch ward of Culcheth.

Local parish Cllr Margaret Webber said: “Two years ago residents of the Newchurch ward brought to my attention the many decrepit, neglected and unsightly old WBC “No Ball Games” signs which were blighting most of the green areas of this otherwise pleasant part of the village.

“It has taken two years to track down the agency currently responsible for these sixty-year-old pieces of street signage and to have them removed.

“After a good many difficulties, the work has finally been completed and the difference to the environment can clearly be seen, for example, in the accompanying before/after photos of the junction of Downham Avenue with Newchurch Lane.

“More work remains to be done on having many street name signs refurbished,” she added.



twentyfour seven
design & print ltd

We supply and fit all types of signage: self adhesive graphics, glass, metal, wood, perspex, foamex plastic.

Call or email for a free site visit.



01925240247 info@247print.net www.247print.net

Paws for thought at high school!

THERE'S a new member of the team at Culcheth High School – and he's got four legs.

Will is a happy, calm and gentle dog who belongs to a member of the school staff.

But one day a week he becomes a member of staff himself – as the community dog!

He enjoys walking with pupils and doing tricks for treats. And under the guidance of pastoral staff, he meets one-to-one with staff both as an incentive to learning and to calm pupils if they are feeling anxious.

He has been attending school since March and has proved very popular with the pupils who meet him.



New application to have historic Raven Inn listed

A new application has been submitted to Historic England, to have the historic Raven Inn at Glazebury, Warrington, listed.

A previous application was not accepted, with no right of appeal unless new evidence could be unearthed, for a fresh application. This latest submission by American based history enthusiast Van Hostetler, contains fascinating new evidence.

The application is extremely detailed with a case made for this rare survivor's importance to Lancashire and within a national context.

It contains new historic information and further attempts to demonstrate group value as desired by Historic England.

Perhaps most interesting are images which indicate that the Raven Inn, clearly shown on the 1786 Yates Map, had former functions both as an agricultural barn and as a water mill.

Many mysteries also remain.

Within a national context, this building is a rare example of a purpose-built brick banked mill barn.

National interest is also supported by its multiple ties to the feudal manorial estate system of old Lancashire.

New information indicates that the building now housing the Raven Inn is much older than previously documented and that it exhibits new evidence of prior agricultural and milling functions.

Prior agricultural use is shown by a brick pitching hole clearly seen in its gable in a 1926 photograph. The existence of this pitching hole dictates the former placement of a loading ramp for wagons on the east side of the building's second story.

The 1843 Ordnance Survey maps also indicate past function as a water mill. It is shown that a mill pond existed adjacent to the building. This mill pond was connected to the existing (now covered) mill race which runs along the front of the building.

The above findings support medieval origins for the Raven Inn as well as the listed buildings found on the furlongs to its north and south. Its placement shows it to be older than previously documented.

The Ordnance Survey from [1843] shows that the Raven Inn was formerly a water mill.

Despite some alteration, architectural integrity is retained to a significant degree. This is the most intact structure to survive upon the medieval Holcroft estate and is in much better condition than any of the adjacent listed Holcroft structures. The building still exhibits its original foundation, original brickwork, original mill race, and underneath added overlays, likely its original pitching holes and original timber frame.

When evidence of its prior functions is considered, the Raven Inn is likely much older than previously thought.

No other structure in the area can illustrate multiple ties to the feudal estate system of old Lancashire in quite the way this one can. Much more must be learned about its

history and thus, this asset must be protected.

Meanwhile special "drop-in" sessions have been organised as part of the ongoing campaign.

A spokesperson for the Save the Raven group said: "We are continually looking at different ways to keep everybody updated on what is going on with regard to saving the Raven Inn."

"In addition, our cause can only benefit from a range of diverse

views and contributions.

"Following our public meeting in September we have now arranged the first drop-in sessions for Glazebury & Culcheth.

"The idea being that anyone can literally drop-in and talk about the present and the future of the Raven."

The first drop-in will be outside Sainsbury's, in Culcheth on Saturday, October 26, between 11am and 1pm.

The next will be in the scout hut in Glazebury on Sunday, December 8 also 11am to 1pm.

The spokesperson added: "The intention is to hold these drop-in's in both villages on alternate months. Whilst we have to fit in with other bookings for the venues, we intend to continue with the drop-in's for the foreseeable future. That way they will become self-advertising."

"Not everybody does social media, not everybody has been able to get along to the public meetings. We hope this initiative will provide the opportunity for more people to come along and talk with us."



Climbing a mountain for charity

A TEAM from local firm of chartered accountants Hunter Healey battled their way up Mount Snowdon to raise more than £800 for local charity The Alice Hiley Trust.

Pictured are Nigel Healey, Kayleigh Richmond and Alicia Flint at the summit after climbing the mountain in horrific weather conditions.

The firm has pledged to complete an annual challenge to raise money and awareness for a chosen local charity.

The Alice Hiley Trust was set up by a local family to raise much needed funds to help neo natal babies and their families. They also raise awareness for CDH - Congenital Diaphragmatic Hernia - a birth defect of the diaphragm.



Man of Steel George in World Championships

BIRCHWOOD'S "Man of Steel" George Houghton turned in fine performances when he took part in the Obstacle Course Racing World Championships.

It was a day when the weather, at Kelvendon Hatch, Essex, made it quite an achievement to complete the course, never mind win anything.

George, 16, a student at Birchwood College, was in competition with rivals from all over the world as well as with appalling weather.

A number of competitors were taken off the course with various degrees of injury and hypothermia but George battled on to complete his three races.

In his 3K race, category 13-19 years, he was placed 34th in the world and 8th in Great Britain. In the 15K he was placed 16th in the world and 9th in Great Britain.

His final race was a 7K obstacle course which he completed with his mum, Lynette who said: "We enjoyed being out there with no pressure, running and doing the

obstacles together. Not all 16-year olds would be seen out with their mum, so it meant a lot to me. I am

so proud of him."

Next year the competition will be held in Vermont, so hopefully the weather may be better - and George will be working hard to qualify.



Cheerleader Mia is on top of the world

CULCHETH High School pupil Mia Hancox has been selected as one of 18 cheerleaders to represent England in the ICU World Cheerleading Championships in Orlando next April.

Mia dances for Salford-based Red Hot Flames, a cheerleading club in the area and had to attend selection trials to qualify for Team England.

Earlier in the year, her team, Red Hot Ignite, flew to Dusseldorf, Germany, to compete in the Varsity European Championships.

After two days of competition, they came third in Europe and won a place at the World Championships, also in Orlando next year.

They will be making history as England's first-ever Junior Pom team to take part in the World

Championships.

Mia, a former Newchurch Primary School pupil, is taking GCSE PE as one of her options and Culcheth High School is supporting her in her cheerleading as part of this qualification.

Her Mum, Gill, said: "Mia is working hard each night, and as well as attending training sessions all over the country, she has to submit several training videos each week of high intensity fitness training, technique and skills drills, as well as routine /choreo sessions. Her commitment is second to none.

"Few people will know, but cheerleading has just been granted Olympic Sport status, as well as Sport Status from Sport Accord. Finally, these athletes are being given the recognition they deserve. Unfortunately, given the timing of

this announcement, neither teams will receive any funding from Sport England or our National Governing Body.

"Both Red Hot Ignite and Team England are self funded, and Mia and her team mates are reaching out to their communities, looking for sponsorship and donations to raffle etc which would help us to fund training venues in the UK and America, choreography fees, costumes, poms, training kit and dance shoes. Any help to cover these funds will result in us proudly promoting sponsors on our social media posts as well as on our team apparel."

More details can be found at teamenglandpom@gmail.com or info.rhflames@gmail.com



Hunter Healey support Culcheth Pythons for 10th consecutive year

Hunter Healey Chartered Accountants are honoured to be supporting Culcheth Pythons for the 10th consecutive year!

"The lads are now U15's with most being with the team since age 5 and have really grown both physically and mentally over the years.

"Some are now bigger than me, and I'm 6ft!" stated Neil Burlinson one of the coaches. "It's a real pleasure and a privilege to have been involved in their lives and to see them develop into the young men that they have become, not only in terms of their footballing ability but in terms of growing as individuals too."

Culcheth Pythons had a fantastic season last year for the 2018/19 season, winning the league in the first season in the Bolton and Bury District Football League (BBDL) resulting in a promotion to the top division of the BBDL.



Sweet smell of success at WI meeting

The air was filled with sweet aromas at the monthly meeting of Croft WI when Matthew Lepp came to demonstrate soap making.

Tiger Muffin Soaps was started in 2002 by Matthew and his sister Becky. Initially just producing six varieties of handmade soaps, which proved extremely popular, they now produce over 30 and have diversified into making a full range of handmade bath bombs, shower gels, bubble bath, hand creams and gift packs.

The art of soap and bath bomb making was comprehensively demonstrated by Matthew, explaining all the various ingredients used and the scientific reactions when certain ingredients are mixed together, such as bicarbonate of soda and citric acid which produce the fizz in bath bombs, etc. He also gave an extremely amusing account of the history of soap making. The Romans who made soap using goat fat, charcoal and salt, which could only be used for laundry as it burnt the skin, just used olive oil on their skin which they scrapped off and if they were very dirty included sand in the mix! Even as far back as 1066

soap was being produced using olive oil and one of the first manufacturers was based in Castile in Spain, but unfortunately this was only available for the very rich, so the peasants just used a plant called Soapwort, which when crushed produced bubbles.

Many more interesting historical facts were explained, including the history of large scale modern day soap manufacture. This was started by William Colgate in New York in 1806 and of course this is the famous Colgate Company renowned for toothpaste. Information on many of the modern soap producers were included in the presentation, such as Proctor & Gamble, Lever Bros, Cussons etc., and also details on some of the North West producers no longer in existence, names that ring a bell like Bibby's, Hudson's and a once famous company in Widnes called Gossages who produced a popular pink carboic soap.

The competition was won by Anne Laming 2nd Sheila Clifton 3rd Bettina Sharpe.

Secrets of handwriting

GUEST speaker Susan Ord revealed some of the "Secrets of Handwriting" in her talk at the monthly meeting of Newchurch WI.

Members learned that almost everyone's handwriting is unique. In school we all learn "style characteristics", then we add our "individual characteristics" and our writing then alters as we age. All this means that experts claim that almost nobody shares 20 to 30 individual characteristics.

Handwriting analysts look for differences when they compare two documents and their task is made harder because left-handedness can't be detected on the written page. Real expertise is needed in cases of forgery or any other criminal activity. Members enjoyed the talk and Phyllis Longson gave the vote of thanks. Two members had bravely given samples of their own writing for analysis and were rewarded with competition points.

As it was the AGM there were reports on the year's activities - outings, craft activities, the Spring Coffee Morning and the Garden Party. Also Freda Wilcock was welcomed as a new committee member to replace Isobelle Dastey who was resigning after three busy years.

Young Eagles fly high in cup final

THERE were celebrations at Culcheth Eagles RLFC when the Under 13s team won the North West Counties Cup with a fantastic 32-4 win over Halton Farnworth Hornets.

It was a game the young Eagles dominated from start to finish.

By half-time they were leading 14-0, with tries from Stephen Hall (2) and Jacob Gumbs and a conversion from Jacob Heenan.

Nathan Heywood (2) and Nathan Bond added more tries in the second half and Heenan scored three conversions.

Man of the match was Nathan Heywood.

Firefighters tackle large blaze at Croft farm

FIVE fire crews tackled a large fire involving a farm store building at farm in Winwick Lane, Croft, Warrington, on October 14.

On arrival the crews discovered that a single-storey farm store at Dolly Bridge Farm measuring approximately 10 metres by 20 metres was well alight.

A water relay was set up to get enough water to the timber frame steel clad farm store and crews split the fire into four sectors, due to its size.

Four firefighters, including two wearing breathing apparatus, began fighting the fire, each using a hose reel jet.

A number of small gas cylinders were located and cooled down to make them safe.

The fire was brought under control at 23.20.

Firefighters dampened the farm store down to make it safe and used a thermal imaging camera to check for hot spots.

The number of fire engines at the scene was reduced from five to three.

An investigation into the cause of the fire has begun.

The farm is next door to the popular Kenyon Hall Farm which was not affected and is open for business as usual.

CLASSIFIED

AIR CONDITIONING

EXPERIENCED AND PROFESSIONAL Warrington-based 4 Seasons are air conditioning specialists. We install, maintain and repair air conditioning for business and homes. FREE call outs and special offers. **Contact John & the team on 0330 400 5471 or enquiries@4sac.co.uk or www.4sac.co.uk** (012/19)

AIRPORT TRANSFER

HOLIDAY AIRPORT TRANSFERS. Read all about our special commitment to our customers at the website. Exceptional peace of mind hospitality. Return chauffeur meet & greet rendezvous inside arrival lounges. Serving Culcheth, Croft, Glazebury, Winwick, Glazebrook, Birchwood. Upgrade Your adventures. **Tel 01942 269919. www.holidayairporttransfers.co.uk** (09/19)

CARPET CLEANING

AT STAINBUSTERS. A Warrington company cleaning carpets, hard floors, Upholstery (Leather + fabric) and curtains in situ. FREE quotes for domestic and commercial. Approved carpet cleaners for Hancock and Woods for over 10 years. **Call John on 01925 852088 or 07765 314080** (04/29)

SIMPLY THE BEST CARPET CLEAN YOU will ever have. Cleaners UK Ltd. Est 30 yrs. Have your carpets & sofas beautifully deep cleaned leaving them fresh smelling & colour restored. Latest & best methods. Dry/steam. Leather cleaning, oriental rug specialist. Professional, reliable & affordable. **For more info call Neil Riley on 01925 264989/07831 336060 www.cleaners-uk.net** (02/20)

CHIROPODY

KATHRYN GRACE AND ASSOCIATES, D.Pod.M., M.Ch.S., HCPC registered. Chiropractors/Podiatrists, 30 years experience, offering friendly and professional footcare, also Gait Analysis. Care home & commercial contracts are welcome. Culcheth based. **Tel 01925 762404 www.parkviewcentre.co.uk** (012/19)

CLEANING SERVICES



arley's angels

- Spring Clean Specialists
- Presenting your home for sale
- Moving house
- After building work cleans

01925 266834
... because you're worth it!

COMPUTERS

AED COMPUTER SERVICES. For all your PC servicing requirements including: Hardware repairs / upgrades, Software / Operating System re-installs, Virus removal, basic training. **Tel: 01925 766426, mobile: 07870 260657, email: enquiries@aed-cs.com, Web: http://www.aed-cs.com** (04/20)

HOME SERVICES



ATLAS
Your friendly local independent
PEST CONTROL

Affordable, professional, guaranteed service. Fully insured, fixed prices - no surprises once on site!
Discrete vehicles, no embarrassing signs
07999 487 925 / 01925 445 222
www.atlas4u.co.uk (06/20)

PAYROLL

WHY TRY TO BE A PAYE EXPERT? Watkinson Black can provide a cost effective payroll service, releasing you to concentrate on your business. **For further details please phone: 01925 413210 or e-mail: info@warringtonaccountants.co.uk** (05/19)

TREE SURGERY

SAM WOOLSTENCROFT TREE SERVICES. Commercial and Domestic tree and Landscaping services. NPTC qualified, Safe Contractor approved and fully insured. Friendly and reliable, local family business. **Contact Sam 01942 673736 or 07565 534343** (010/19)

TUITION

SPANISH LESSONS IN CULCHETH Daytime tuition in Spanish grammar for adults - beginners or revision. Experienced retired tutor; friendly relaxed lessons for singles or couples. **Tel 01925 765 962 or Mob 07922 155 275** (012/19)

TYRES



CULCHETH TYRES
New and Part Worn Tyres
Motorcycle Tyres and Servicing
01925 766 380
www.culchethtyres.co.uk
Unit 1D, Taylor Business Park, Risley, WA3 6BL (012/19)

WANTED

XBOX 360 GAME OBLIVION in good condition. **Phone 01482 610414** (0811/19)

WINDOWS & GLAZING

LEIGH GLASS LTD. For all of your glass requirements please contact. **Tel 01942 678440 Fax 01942 261728 email leighglass@hotmail.co.uk** (01/20)

Promote your business to thousands of local people with a

Culcheth Life
Magazine

classified for just £72 plus VAT for six months.

For more details call
01925 631592



Treat yourself this autumn...

...Landlords, let us manage
your letting needs

Through our affiliation with
Cartus, the premier provider of
global relocation services, we
have access to potential tenants
moving into the area.

If you
have a property
available to let,
talk to us, your
Local Lettings
Expert...

Call us now to discuss our competitive rates and why we have been chosen as the winning
Gold Agent for customer service in the **British Property Awards 2019** for Warrington East

Courtyard
ESTATE AGENTS

www.courtyardhomes.co.uk

15 Jackson Avenue, Culcheth, Warrington, WA3 4EJ
T 01925 767000 E ask@courtyardhomes.co.uk