

# Culcheth *Life*

**FREE EVERY MONTH**

Issue: 187  
October 2018

**Dootsons**  
SOLICITORS

See main ad  
Page 10

23 Jackson Avenue  
Culcheth

**0845 330 5700**

CULCHETH • CROFT • GLAZEBURY • GLAZEBROOK • BIRCHWOOD • WINWICK AND SURROUNDING AREAS



**Celebrating 50 years  
in the village**

Page 9



**Courtyard**

01925 767000

[www.courtyardhomes.co.uk](http://www.courtyardhomes.co.uk)

**All the latest news: [www.culchethlife.com](http://www.culchethlife.com)**

**Editor**  
Gary Skentelbery

**Production**  
Paul Walker

**Advertising**  
James Balme

**Freephone**  
0800 955 5247

**Editorial**  
01925 623633

**Email**  
info@culchethlife.com

**Websites**  
www.culchethlife.com  
www.frodshamlife.co.uk  
www.lymmlife.co.uk  
www.warrington-  
worldwide.co.uk  
www.warrington.tv

**Address**  
New Media Centre  
Old Road Warrington  
WA4 1AT

*Culcheth Life is published  
monthly by Orbit News Ltd.*

*The contents of this magazine  
are fully protected by copyright  
and nothing may be reprinted  
or reproduced without prior  
permission of the publishers.*

*The publishers are not liable for  
any statement made or opinion  
expressed by third parties in this  
publication.*

*Printed by TwentyFourSeven*

# Editor's Comment



**THE recent sale of Taylor Business Park marks the end of an era - but also the dawn of a new one.**

The 55.15 acre site near Culcheth, which has been run by three generations of the Taylor family, sold for £19.2m to West Yorkshire based Ribston, who own a number of properties in the North West.

While it marks an end of an era for the family business, it marks the dawn of a new one for MD Paul Taylor, who also runs Cheshire Telecoms, based on the business park and has also created a new management company Taylor Estates.

Instead of focusing on properties on one business park, Paul is now looking at investing in "interesting properties" in and around the Warrington area, in what he describes as "exciting times."

Having known Paul for many years now through business and socially, he has been a great supporter of the local community and certainly never been one to rest on his laurels.

He certainly worked tirelessly to secure the future of the business park when it was under threat from the proposed HS2 high speed rail network.

He also worked hard to secure the future of the Wild Wings Bird sanctuary, which now has a new home on land at the business park and was also instrumental in helping transform Culcheth

Victorian Day into the Culcheth and Glazebury Christmas Market.

Paul has also been a great supporter of Culcheth Life, recognising the importance of a local community news source.

I wish him well for the future and look forward to reporting on the exciting times ahead.

Meanwhile I would like to welcome Ribston to the local community and look forward to the dawn of a new era for Taylor Business Park.

Finally I would like to congratulate the team at Hob Hey Lane Dental Practice on their 50th anniversary - a fantastic achievement for any business.

Our publishers Orbit News are also celebrating their own 50th

anniversary this year, so we know all too well the highs and lows of running a business for half a century!

With uncertain times ahead with Brexit, it is more important than ever that we all work together to ensure we have a vibrant local community and support local businesses by shopping local whenever possible.

**Deadline for the  
November issue  
of Culcheth Life is  
October 16**



**CAMPBELL CROSSLEY & DAVIS**  
Licensed Insolvency Practitioners

Constructive solutions to debt  
for companies and individuals.



LICENSED INSOLVENCY  
PRACTITIONERS (UK)

Ian Williamson  
M: 07703 529212  
Roger White  
M: 07946 820299

www.campbell-crossley-davis.co.uk



## Making it easier for your business to be successful

### We care about you

You're a hard working entrepreneur and you need an accountant who does more than just tick the boxes.

### You need a professional

Every one of our highly competent, skilful and professional people is here to help you.

### You're our number one priority

You're more than just someone we prepare accounts for, the success of your business means everything to us.

Are you looking to make your business life easier?

Speak to one of our experts:

**01925 761 600**

or visit us at: [stylesandco.co.uk](http://stylesandco.co.uk)

**styles** and co  
chartered accountants



**CULCHETH TYRES**



More than just tyres...

**Specialists in Prestige, Performance  
and Run Flat Tyres**

Our Services:



Mobile Tyre Fitting Service  
Car Servicing and Repairs  
Motorcycle Servicing and Repairs  
MOT Pre-Preparation  
TPMS Specialist  
Commercial and Fleet Servicing  
Wheel Alignment  
Motorcycle and Scooter Tyres  
Local Pick-up and Drop-off  
Vehicle Diagnostics



Why pay main dealer prices?

Our fully qualified main dealer trained technicians can carry out all types of servicing and repairs on your vehicle and still keep your manufacturers warranty

**Save upto 40% on main dealer prices!**

01925 766380 / 766987  
Unit 1D Taylor Business Park,  
Warrington Road, Risley WA3 6BL



# Culcheth Beer Festival goes from strength to strength

**MORE than 1,000 people attended the annual Culcheth Beer Festival held over two days at Culcheth Sports club.**

Now in its 8th year, the event goes from strength to strength with a Gin bar being added this year to popular acclaim, in addition to the previous menu of Beers, ciders and Prosecco.

Organised by the Rotarians of Newton & District Jubilee, Main Sponsors Hunter Healey Chartered Accountants were once again in high profile attendance on the Friday, assisting the Rotarians both behind the bar and on the stage.

The Hunter Healey Beer Band received a rousing reception, presenting a varied programme of popular classics, with one commentator saying "it gets better every year."

The event is a hugely popular event in a good cause, raising valuable funds for the charitable work of Rotary which benefits many local organisations and is now a highlight on the annual village calendar.



## Members Day at Glazebrook WI

THE September meeting of Glazebrook WI was "Members Day" when everything was provided by the members themselves.

Individual tables were set out with flower arrangements, birthdays were celebrated and very special congratulations were given to one member, Betty, who is 90 this month.

Last month members enjoyed a very successful trip to Speke Hall in Liverpool and a trip to the Brindley Theatre to see The Wedding Singer has been arranged for November.

The village held its annual show in the community hall at the start of the month when several members won prizes for their flower and produce. Later this month there is a "fish and chip" evening and plans are well underway for a Christmas carol service at Burtonwood.

Members then enjoyed a wonderful spread of cakes, sandwiches, salads etc all provided by talented members, and a very clever set of quiz questions had everyone thinking

This month's craft day is how to make a card - could it be a Christmas card?



**HUNTER HEALEY**  
CHARTERED ACCOUNTANTS

- Professional, approachable, affordable
- Accounts preparation & tax returns for individuals & companies
- Bookkeeping, payroll & vat
- Capital Gains, Estate Planning & Probate Work
- Business start up advice
- First meeting free of charge

Call Nigel Healey now on 01925 767222

Abacus House, 450 Warrington Road, Culcheth WA3 5QX

www.hunterhealey.co.uk



**BARBER  
48**

LODGE DRIVE, CULCHETH

01925 766622

@BARBER\_48

@BARBER48CULCHETH

**RISE & SHINE OPENING**

EVERY WEDNESDAY FROM 7AM

**EARLY BIRD OFFER!**

MONDAY - WEDNESDAY 8:30AM - 11:30AM

**HAIRCUTS ONLY £12!**

**COMPLIMENTARY BEERS AND SKY TV  
FOR YOUR ENTERTAINMENT**

WE ARE NOW EXCITED TO OFFER OUR EXCLUSIVE  
PROFESSIONAL TREATMENTS TO BOOK VIA OUR

**NEW BARBER 48 APP!**

FREE TO DOWNLOAD:



VISIT OUR NEW WEBSITE: [WWW.BARBER48.NEARCUT.COM](http://WWW.BARBER48.NEARCUT.COM)

# Fundraiser raises £2,700 for Brain Tumour Society

**AN all-day fundraiser at Croft raised an amazing £2,700 in aid of the Brain Tumour Society.**

The event started with a coffee morning at 10am and continued in the afternoon with entertainment which continued until 7pm.

Organiser Barbara McDermott, in whose garden the event was held, said: "I would like to thank all the Culcheth community for purchasing raffle tickets and for their generous donations, especially businesses in the village for consistently supporting the event

which has taken place annually over the last three years.

"We chose to raise money for this particular charity this year in loving memory of a friend of ours, Ian Nish, who sadly recently passed away, aged 55.

"The support of the community has been touching and will hopefully make an impact on the good work undertaken by the Brain Tumour Society."



**Courtyard Carpets**

**Opening Times:**  
Monday to Friday 9:30am - 4:30pm  
Saturday 10am - 3:30pm




**Call in store to find your perfect flooring solution.**  
Carpets, Vinyls, Karndean, Laminates, Screeding, Rugs

**1st for Service**  
**1st for Quality**  
**1st for Choice**

The Old Telephone Exchange, Common Lane, Culcheth, WA3 4HA  
01925 555 820 | sales@courtyardcarpets.com  
www.courtyardcarpets.co.uk

**simple solutions**  
Financial Management Ltd  
INVESTMENTS & PENSIONS



## INVESTMENTS

Our investment expertise will ensure that you have the most suitable investment to help you achieve your financial goals.

We use:

- Asset Allocation
- Risk Profiling
- Diversification
- Correlation

## PENSIONS

Pensions have changed since the March 2014 budget and you now have a lot more options to consider

### TECHNOLOGY

Simple Solutions uses the latest technology to keep you updated, even when you are on the move or abroad, check out our website for more details.








The Base, Dallam Lane,  
Warrington, Cheshire  
WA2 7NG

Tel: 01925 266628 Fax: 01925 267043  
www.simplesolutions.financial @SimpSolsIFA

Simple Solutions Financial Management Ltd is authorised & regulated by the FCA. The registered office is 1st Floor, 67 London Road Stockton Heath, Warrington WA4 6SG. Registered in England & Wales. The company Re No 6920858

# Communication Simplified.

-  VoIP Telephony ✓
-  IT Audit ✓
-  Mobile sims & hardware ✓
-  Internet connectivity ✓
-  **30 Day Rolling Contract** ✓

On average  
we **SAVE** our  
clients **33%**  
annually ✓

Let's arrange an appointment, sit down and see if we can save you some money on your bills.

Call us **01925 640 640** or  
email **hello@cheshiretelecom.co.uk**

Clients we've helped grow:





# Open Evening

## Thursday 4th October 2018



Arrival and Registration 6.00pm

Headteacher Presentations 6.30pm & 7.00pm

79% of students achieved 9-4 Basics in  
English & Mathematics GCSE

74% of students achieved 5 standard GCSE passes  
(including English & Mathematics)

28% of all GCSE grades were A\*-A / 7-9

Warrington Road,  
Culcheth, WA3 5HH.  
Phone: 01925 767587  
www.culchethhigh.org.uk  
#WeAreCHS

> RESPECT  
> HONESTY  
> EXCELLENCE

# House can be turned into care home - despite objections



**A CONTROVERSIAL plan to change the use of a house at Culcheth into a residential care home for up to five children has been given the go-ahead.**

Culcheth and Glazebury Parish Council and six nearby residents opposed the development at Lions Den, in Holcroft Lane and one former resident supported the scheme.

But after considering the proposals, the borough's development management committee decided they could go ahead.

Chairman Cllr Tony McCarthy said: "There were not enough reasons to justify refusal of the proposals."

The plan, put forward by REC North West, involves a change of use of Lions Den, a two-storey detached house on the roundabout at the junction of Warrington Road and Holcroft Lane from residential use to a care home for up to five children aged 8-18 with social, emotional and mental health difficulties.

The house would be split, with

four children living communally in the front part, supervised by non-sleeping staff and one in a "house" at the rear, with a bedroom, living room and a second bedroom for a sleep-in member of staff.

Culcheth and Glazebury Parish Council objected on the grounds of inadequate information, inadequate consultation, lack of security and unsuitability of the location, next to a busy junction.

Nearby residents questioned the suitability of the site, drew attention to existing problems of anti-social behaviour, inadequate parking, the potential for the children to be bullied by pupils of nearby schools and the limited staff presence overnight.

But officers believed the site was suitable and that the impact of the property would be very little different to that of an ordinary house of that size.

## Culcheth Methodist's Annual Memorial Service

CULCHETH Methodist Church hold their Annual Memorial Service at 3pm on Sunday November 4.

The event is for those who have lost a loved one and provides some quiet time to think about them and an opportunity to light a candle in their memory.

The service takes place in the church on Ellesmere Road WA3 4BW and is open to anyone

who would like to come along to remember a loved one.

"Time does not heal:  
It makes a half-stitched scar  
that can be broken and you feel  
grief as total as in its first hour."

For further details please ring John Gregson (Pastoral Visitor) on 01925 762715



# YOUR CHOICE

## HOME IMPROVEMENTS

### FULL DESIGN & BUILD SERVICE

**0%**  
Finance  
Available  
subject to survey



**NO**  
Planning  
Permission  
Needed

## Garden Studios



- Useable room - 365 days
- Highly Insulated
- Fitted with all mod-cons
- Quick Installation



PERFECT FOR YOUR HOME OFFICE/GYM,  
MUSIC STUDIO OR SIMPLY EXTRA SPACE!



**SHOW HOMES REQUIRED  
CONTACT NOW!**



## Composite Decking



- Slip Resistant
- No Staining or Painting
- Hard Wearing
- Weatherproof



CALL FOR A **FREE** QUOTE  
**0161 643 7222**  
OR VISIT **YOUR-CHOICE.UK.COM**

Showroom Open **7 DAYS**  
590 Manchester Old Rd  
Middleton  
Manchester  
M24 4PW

**Checkatrade.com**



**\*NEW\* opening September 2018**  
 Governor led nursery within Croft Primary School,  
 Mustard Lane, Croft, Warrington WA3 7DG

- Provision for 2-5 year olds. 7.30am to 6pm including holiday care up to 11 yrs for 50 weeks per year
- Flexible, high quality early education
- Up to 30 hour funded childcare places available\*
- Fully qualified staff

Please contact us for more information or to complete an application form.

[crofttinyacorns@gmail.com](mailto:crofttinyacorns@gmail.com)  
[www.croftprimary.co.uk](http://www.croftprimary.co.uk)  
 croft primary school warrington  
 @CroftsSchool

*\*subject to eligibility criteria*



# New nursery opens at primary school



## CROFT Primary School has opened the door on the first governor-led nursery in the borough.

Situated within the school, with a strong ethos of high quality nursery provision, Croft Tiny Acorns is a nursery and forest school.

It was officially opened by Cllr Karen Mundry, Mayor of Warrington.

Headteacher Anne Mains said: "We are thrilled to be opening this unique provision."

"This nursery is managed by myself and my teaching team. We have invested a lot of time and resources into offering children the very best start to their educational journey."

The nursery is open from 7.30am to 6pm and is open for 50 weeks a year.

# “ A level Students made some of the strongest rates of progress across the whole country

Ofsted 2018



## LYMM SIXTH FORM

### OPEN EVENING

Thursday 8th November 2018 | 5pm - 8pm

[www.lymmhigh6thform.org.uk](http://www.lymmhigh6thform.org.uk)





# Dental Practice celebrates 50 years in Culcheth

HOB Hey Lane Dental Practice is celebrating 50 years in the village and a new dentist joining the team.

The practice was founded in 1968 by David Johnson, who moved to the area from Essex looking for a new challenge.

David said: "After two years in Colchester, Essex I arrived in Culcheth in April 1968, with my wife and baby son, ready for the challenge of starting my own practice.

"The village was growing with young families and had no full-time dental practice. There was a very limited amount of property available and 3 Hob Hey Lane provided the only option to set up a practice close to the village centre.

"Having obtained planning consent, building renovation and equipment, Hob Hey Lane Dental Practice opened in mid - June 1968. The first day had only our neighbour and her two young daughters for examinations - a quiet day - never to be repeated!

"Christmas 1968 found me working six days a week with a one month waiting list and within a year I was seeking my first associate to share the workload. The practice continued to expand and in the 1970s David Cockbain became my partner until my retirement in 2002 when John Fleming became a partner.

"The practice ethos of good family dental care has been continually developed during the past 50 years and it is very satisfying to see it still carried out today.

### Family dentistry

John Fleming's said: "I've been involved in Culcheth for the last 25 years and I worked at the Cherry Tree and Leigh Golf club while I was training to be a dentist. It was there I met David Johnson and as soon as I qualified I moved to Hob Hey Dental Centre and I have been here for the last 20 years. We have constantly tried to evolve the practice whilst making sure our ethos of providing family dentistry remains the same.

"I feel lucky to live and work here in Culcheth and be part of this fantastic community.

John added: "I am so excited that Jonathan Crockett has joined the team with all his skills and good ideas we can ensure that we remain a modern, vibrant practice focused on excellent patient care and I very much look forward to the next chapter in our story. It is fair to say we have been busy for the last 50 years but I am pleased to announce that we are taking on new patients and we have expanded our treatments to include Invisalign, Fastbraces, Implants and

Cosmetic Dentistry and we have NHS spaces available for children.

"I would like to thank all of our patients, past, present and future for their support and also to thank my fantastic team who are all committed to providing the highest standards of patient care which I believe is delivered in a relaxed and friendly way.

Jonathan said: "Having just recently moved to the local area with my wife, who is originally from Culcheth, I am looking forward to continuing to care for the existing patients and welcoming new patients from Culcheth and the surrounding areas."



**ST. LEWIS' CATHOLIC PRIMARY SCHOOL**

Headteacher: Mrs K Berry

**OPEN EVENING**

**Tuesday 13th November 2018 - 3.30pm - 5pm**

We warmly welcome prospective parents to come and visit our school; meet the staff, speak with some of our wonderful children and see our vibrant learning environment.

Within our Catholic faith and values we welcome and nurture families of any denomination. No appointment necessary

**Tel: 01925 762268 E-Mail: [stlewis\\_primary@warrington.gov.uk](mailto:stlewis_primary@warrington.gov.uk)**  
**Mustard Lane, Croft, Warrington WA3 7BD**



## We're welcoming new patients!



**Child NHS places also available!**

Rest assured, your dental health is in safe hands, with Dr John Fleming and Dr Jonathan Crockett!

50

years

ANNIVERSARY

Contact us today on **01925 762998**  
[hobheydental@soegateway.com](mailto:hobheydental@soegateway.com)

[www.hobheydentist.co.uk](http://www.hobheydentist.co.uk)





*There are moments in the lifetime of a business, where the opportunity fills you with both excitement and caution in equal measure. These are the times when only enthusiastic expertise will do.*

- Business or Share Sales and Purchases
- Company Matters
- Partnership Matters
- Agency, Distribution and Terms and Conditions
- Franchising
- Employment Issues
- Commercial Property Transactions
- Property Development
- Landlord and Tenant
- Agricultural Matters
- Environmental

**We provide a full service to our Commercial clients, advising and assisting them in dealing with many and varied business issues and queries that arise in business.**

**For further information please contact us.**

**Dootsons**  
SOLICITORS



**23 Jackson Avenue, Culcheth**

**01925 765212**

**Email: [comms@dootsons.co.uk](mailto:comms@dootsons.co.uk)**

**[www.dootsons.co.uk](http://www.dootsons.co.uk)**

**CULCHETH • LEIGH • NEWTON**

## Culcheth woman first to trial innovative new treatment

A 75-year-old Culcheth woman was chosen to be the first patient to take part in an innovative new trial which enables heart patients to be treated at home rather than in hospital. Josephine Creaghan was identified as being suitable for the trial and was keen to take part because she cares for her husband, who is also in poor health, and did not want to have to go into hospital.

The trial was started through a collaboration between Warrington and Halton hospitals and Bridgewater Community Healthcare, which runs the Warrington Community Intravenous Therapy (IV) Service.

A team of specialist nurses, the IV service prevent hospital admissions and aid the early discharge of a range of hospital patients by providing IV drug treatments in patients' homes or at the Bath Street Health Centre in Warrington.

Hospital cardiology consultant Dr Ahmed Farag approached the Bridgewater IV team and a new trial was set up to examine the effectiveness of extending their support to patients with heart failure, a condition which results in gross peripheral swelling.

Rebecca Redfern, IV lead nurse for Bridgewater said: "We are always looking to improve our service and offer as much support as we can to aid the recovery of patients in their own homes so they can either leave hospital early or avoid going into hospital altogether.

By keeping patients out of hospital and in their own homes, they are more comfortable and rested and they also have a reduced risk of contracting an infection.

"My background is in acute medicine, so I was excited to be approached by Dr Farag to start a small trial of treating patients with heart failure who have swelling in the lower legs. Although this condition would usually be treated using the drug Furosemide administered by IV in hospital, Dr Farag approached us about trialling home treatment for these patients."

Dr Farag said "Decompensated heart failure is one of the common reasons for prolonged hospital admissions. My idea was to explore whether in suitable selected patients we could avoid hospital admission altogether by safely providing intravenous diuretic injections at home. I was pleased that Bridgewater's Community IV Team were happy to participate in the project."

The Community IV Nurses visited Mrs Creaghan twice a day for two days to administer the drug Furosemide and assess her condition. Results were regularly scanned and fed back to the consultant and staff from the team spoke with him regularly through the two days.

After two days Mrs Creaghan's treatment was completed and her blood pressure and swelling

## New superfast broadband arrives

SUPERFAST broadband has arrived in the Croft and Kenyon areas.

MP Helen Jones cut the ribbon on the new BT cabinet in Stone Pit Lane, Croft, to launch the new, improved service.

The launch event was organised by the Connecting Cheshire Partnership of the four local authorities across Cheshire.

More than 60 premises in the vicinity can now benefit from faster broadband and across the whole of Ms Jones' constituency, about 99 per cent of properties can now access broadband speeds of more than 24 Mbps.

The MP was joined at the ceremony by Cllr Norman Partington, of Croft Parish Council, and Cllr Joan Grime, who is a borough councillor and a member of Culcheth and Glazebury Parish Council.

To check availability of fibre broadband and find out how to switch visit <http://www.connectingcheshire.org.uk/how-to-switch/>





reduced significantly. She said: "The service has been marvellous. The nurses and Dr Farag were lovely and explained everything to me. I didn't want to go into hospital so it was nice to be able to stay out of hospital and be treated. It really helped my recovery being at home."

Nurse Redfern added: "The trial has been really successful and we are currently looking to identify other suitable patients with heart failure as test cases for the innovative trial. If successful, we have the potential to treat more patients in their own homes where they are most comfortable and reduce pressure on our local hospitals."

Dr Farag said: "I was delighted

with the outcome in Mrs Creaghan's case. The communication with the community IV Team, their professionalism and excellent service, meant that we avoided hospital admission altogether for Josephine.

"We know that every day the patient spends in hospital results in a significant loss of muscle mass, mobility and independence. So by treating the patient at home, we are not only preventing a hospital admission but also preserving the patient's functional status and existing support for as long as needed."

To find out more about Warrington's Community IV Service visit [www.bridgewater.nhs.uk/warrington/ivtherapy](http://www.bridgewater.nhs.uk/warrington/ivtherapy).

## Defibrillator training at village club

THE Village Club in Culcheth is organising a training event on how to use a defibrillator -with the training to be provided by the North West Ambulance Service.

Club chairman Paul Campbell said: 'It's hard to believe that we last did this training at the club in 2016. Where has that time gone? I believe that having a defibrillator not only in the club but widely available throughout our community is a worthwhile thing.

"The more people who are trained the more people who can be helped when needed and more can survive the danger brought about by a heart attack."

The club is not only updating staff on how to use the equipment but is making the evening an open invitation to customers and members of the public to come along and join in.

The training night will be at the club in Wigshaw Lane on October 18 at 7.30pm.

## The Gardening Guide



“ Now is a good time to extend water gardens or construct stunning waterfalls. ”

Simon Eax, Plant Area Specialist

- This is an excellent time of year to construct paths, patios and terraces. Remember they will look best if they complement the materials used for the house
- The last mow of the year will probably take place this month
- Plant traditional favourites such as Wallflowers, Forget-me-nots and Polyanthus in prepared ground for a colourful spring show
- Clean and oil your garden tools for storage. An easy way to do this is put some oil and sand in a bucket and then slide them in and out of the sand

Bents Garden & Home, Warrington Road, Glazebury, Cheshire WA3 5NT. 01942 266300. Check online for seasonal opening times.

For the latest events and online shopping visit [bents.co.uk](http://bents.co.uk)



Join us for our  
**Christmas Opening**  
Wednesday 10th October,  
at 2pm

Our trees are being trimmed, our recipes are being perfected, our decorations are being created and our teams are being selected.

[bents.co.uk](http://bents.co.uk)





**Call us on: 01942 607250**  
[www.elbfireplaces.co.uk](http://www.elbfireplaces.co.uk)  
70 Twist Lane, Leigh, Lancashire WN7 4DP

**Fire Surrounds, Stoves, Gas & Electric Fires**

Established  
30 YEARS



No need to change your carpet - made to measure fireplaces

Over 75 displays over 2 floors

Live wood burning stove on display

Is your conservatory too cold to use in Winter?  
**Why not install a stove?**



# Culcheth Players present The Canterville Ghost

CULCHETH Players are proud to present their latest production, The Canterville Ghost.

The amateur dramatic society has been busy rehearsing for the Oscar Wilde classic, The Canterville Ghost, which has been adapted by Tim Kelly.

An average American family acquires historic old Canterville Chase – complete with ghost! Sir Simon, the sporting spirit, succeeds in making life miserable. Then the Americans strike back. Sir Smon feels this is hardly fair, so he enlists the aid of some friends: Hester the Horrid, Lord John the Graveless, the Vampire Duchess, and other things that go bump in the night. Life is hectic and fantastically funny around Canterville Chase, until the

real solution to the problem of the ghost is discovered.

The comedy is to be staged in the run up to Halloween and is perfect family half term entertainment.

It is being performed on three nights from Thursday 18th October to Saturday 20th October at 7.30 pm at Culcheth Sports Club (The Daten), Charnock Road, Culcheth WA3 5SH.

Tickets are on sale now and are available from the bar at the club, or through the website at [culchethplayers.co.uk](http://culchethplayers.co.uk) or can be reserved on the ticket line on 07943 517710 or as always you can pay cash on the door on the night of the performance.

Prices are £7 for adults and £5 for children under 16.

The Culcheth Players formed

in 1958 and is a section of the Culcheth Sports Club (Daten). They have had many of the Cheshire Theatre Guild's nominations and awards for the quality of the productions over the years. These awards have been gained in various categories for both the "acting" and "non acting" aspects of their work.

Each Season the society present three plays, usually in October, February and May. Regular weekly meeting and/or rehearsal night is every Monday night in the Main Hall from 8-00pm to 10-00pm.

If you are interested in joining the Culcheth Players as either an actor or crew member you will be made most welcome and details can be found on the website [www.culchethplayers.co.uk](http://www.culchethplayers.co.uk)



## Residents fail to block dormer bungalow plan

PLANS for a detached dormer bungalow in the grounds of Bowling Green Farm, Mill Lane, Winwick have been approved by borough planning chiefs.

The scheme was approved despite objections from nearby residents and the fact that similar proposals had been refused on three previous occasions – and was turned down on appeal.

Eight objections were received from neighbours. They claimed the new dwelling would be oppressive and overbearing and would be out of keeping with other properties in the area.

There were also concerns about loss of privacy and damaging impacts on the views from and setting of Bowling Green Farm and other nearby properties.

Planning officers disputed claims that Bowling Green Farm was a listed building or that the site was in the Green Belt or a conservation area.

They said the development had been scaled down from earlier applications which had been refused – and the borough's development management committee approved the scheme.





**Glazebury C of E (Aided) Primary School and Nursery**  
*Growing together at the heart of God's community*



### Glazebury CE Primary School and Nursery

**Reception Class places are available for September 2019**

**If your child was born between 1.9.2014 and the 31.8.2015**

**Apply for a reception place and arrange a personal tour**  
**Contact school to arrange your visit and ask any questions you may have.**








**Apply for places at our school based Nursery provision**

**Fantastic environment where lead practitioner is a FULLY QUALIFIED TEACHER**

**For 2, 3 and 4 year olds**

**We offer FLEXIBLE - days and hours:**

- Mornings / Afternoons / Full days
- Start times from 7.30am to 6pm
- FREE 15 hour funding
- FREE 30 hour funding (if eligible)
- Can purchase additional hours
- Child care Vouchers accepted

**01925 763234**

**Glazebury CE Primary School,**  
**Warrington Road,**  
**Glazebury WA3 5LZ**

**Email:**  
**glazebury\_primary**  
**@warrington.gov.uk**

**www.glazebury.eschools.co.uk**

**We also have limited places in other year groups within the school. Please enquire for availability**



**Culcheth Community Primary School**  
*Where Learning is Fun!*

## OPEN DAYS

**October 17th and November 13th: 2pm and 6pm**  
**Saturday November 24th 10.30am**

Culcheth Community Primary School is a warm, welcoming, vibrant school that provides a first class education and a wide range of extra-curricular opportunities for all children. Full, flexible wrap around care is provided by school from 7.30am until 6pm

**Individual visits to school warmly welcomed – please call in or phone to make an appointment**

### 01925 764312

Further information can be found on our website [www.culchethprimary.co.uk](http://www.culchethprimary.co.uk)

*"A caring environment in which pupils flourish", parents are 'overwhelmingly supportive of the school' and are 'delighted with the quality of education that their children are receiving' "*

— Ofsted June 2017 —

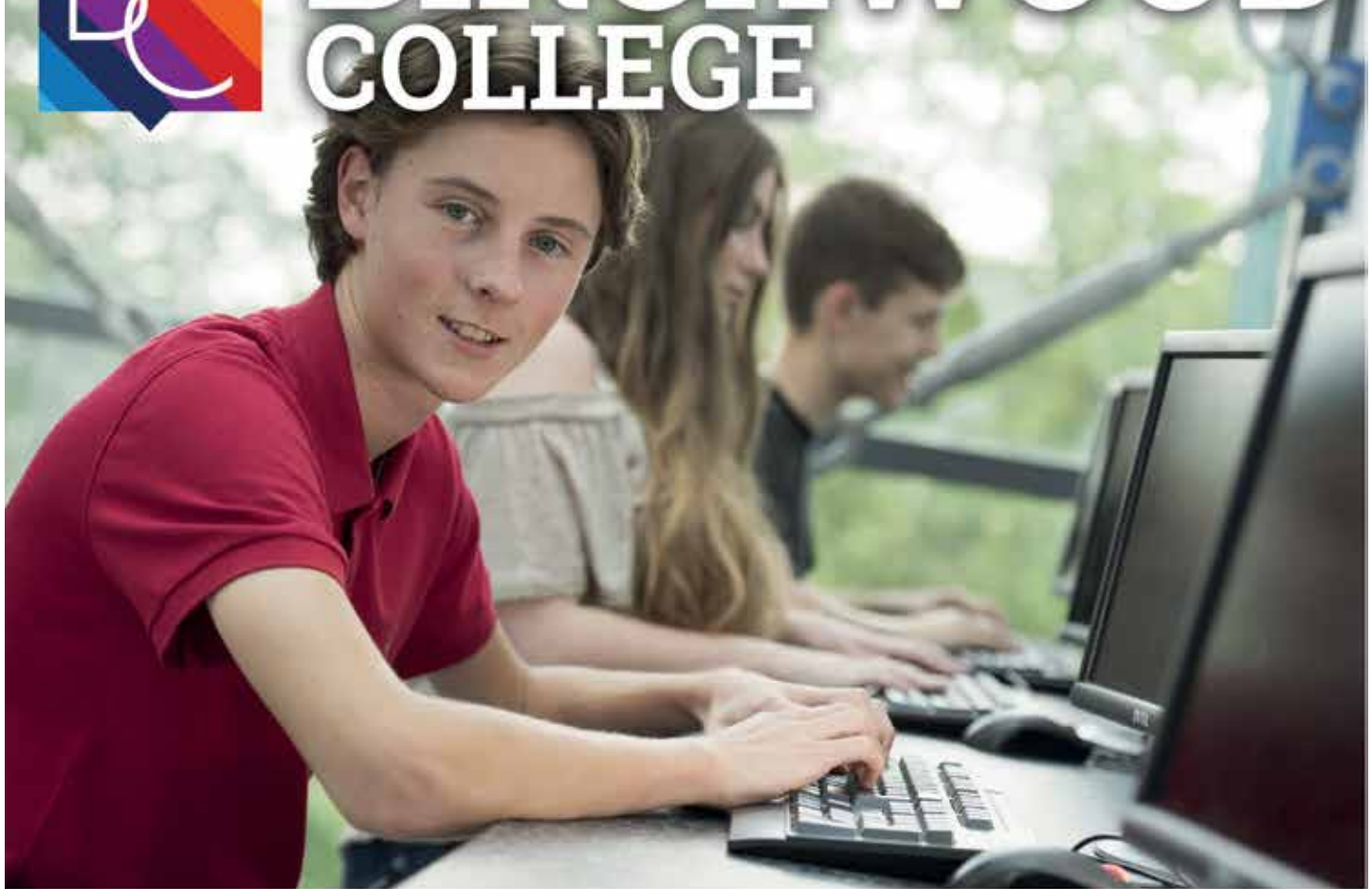
**Our School Values**

- Respect
- Teamwork
- Honesty and trust
- Friendship and kindness
- Creativity and courage
- Happiness, fun and enjoyment





# BIRCHWOOD COLLEGE



**"INCLUSIVE"      "HIGH QUALITY PROVISION"**  
**"ASPIRATIONAL"      OFSTED**

# OPEN EVENING

**THURSDAY 4 OCTOBER**  
**6PM - 8PM**

**PRESENTATION BY HEAD OF COLLEGE AT 6PM**

TEL: 01925 853500

WWW.BIRCHWOODCOLLEGE.ORG

# The Cherry Tree

 **2 meals for £10 served all day Mon-Fri**

Receive £5 off your food bill when you download our Sizzling Pub app

Book now for Christmas, Festive menus from £10.99

[www.sizzlingpubs.co.uk](http://www.sizzlingpubs.co.uk)

35 Common Lane, Culcheth, Warrington. WA3 4EX  
01925 762624 email: bun212199@mbplc.com



## Need help with your children? Nowhere to turn?

Our staff are very experienced, highly qualified Experts in Education & Assessment, who can help you achieve the best for your children at home and at school.

- Home & Education strategies to help you
- Training, Advice & Consultation
- Evidence that can be used to help you liaise with Schools & other Agencies

Prices starting from £50 per hour (quoting this advert)

**Ring Dianne on 07507 105 326 now**  
<https://chrysaliseduc.com>



## Man jailed for Warrington nightclub stabbing

**A Culcheth man has been jailed for more than six years for stabbing a man outside a nightclub.**

Zane Dahou, 20, of Radcliffe Avenue, Culcheth, was jailed at Liverpool Crown Court after pleading guilty to causing grievous bodily harm with intent.

The court was told the victim and Dahou had an argument inside the Showbar Nightclub, on Friars Gate, Warrington, in the early hours of Sunday April 8.

The pair and a friend of Dahou's went outside and the victim threw a punch at Dahou.

Dahou then stabbed him to the chest, puncturing a lung and his spleen, which needed surgery.

Dahou and his friend ran off and were later arrested by officers.

When they searched him they discovered a knuckle duster and found the knife used in the stabbing in a bush nearby.

Detective inspector Helena Banusic said: "This case is a classic example of why people shouldn't carry knives. An argument in a nightclub has left the victim with a significant injury which needed surgery and Dahou behind bars."

"Violence and knife crime is absolutely unacceptable and we are pleased the judge has reflected the seriousness of this crime during sentencing."

Dahou was jailed for six years and nine months.

## Chris Vobe joins Winwick Parish Council

LABOUR'S Chris Vobe - who has previously served on both Culcheth and Glazebury and Croft parish councils - has been elected to Winwick Parish Council.

The full results of a three cornered by election were: : Chris Vobe (Lab) 151; Simon Nolan (Cons) 21; Carl Foulkes (UKIP) - 13.

The turn-out was just under 15 per cent and there were no spoilt ballot papers.

After the election, Cllr Vobe said

he was elected with just over 81 per cent of votes cast.

He claimed the result set a new record, giving him the highest percentage vote share of any currently serving parish councillor in Warrington North.

The results in full were: Chris Vobe (Lab) - 151; Simon Nolan (Cons) 21; Carl Foulkes (UKIP) - 13.

There were no spoilt ballot papers.



**FROM £15**

**twentyfourseven**  
design & print ltd

**GET ANY CUSTOM IMAGE PRINTED ONTO...**

ACRYLIC    GLASS    DIBOND

\*We can also print onto a wide selection of other materials.\*

**QUALITY PRINTERS • EXCELLENT SERVICE • QUICK TURNAROUND**

For all enquiries please contact us on:

**01925 240 247**

info@247print.net    www.247print.net



# Councillor's anger over eyesore site

**A CULCHETH councillor has reacted angrily to borough council claims that there is no visual amenity problem in Church Lane.**

Cllr Keith Bland said the plot of land opposite Smith Garage – formerly a nursery – had been vacant for at least three years. Culcheth and Glazebury Parish

Council had reported the state of the land to the borough council on a number of occasions.

He said: "We reported it again, asking for the site to be cleared

up because it was an eyesore, a couple of months ago.

"The borough replied claiming they had checked it out and found there was no problem as it wasn't affecting the visual amenity of the area.

"All I can say is that whoever the officer was who came down to inspect it really does need to go to an opticians

"The site is a disgrace and the residents in that area deserve better."




**Warrington & Vale Royal College**

[wvr.ac.uk/openevenings](http://wvr.ac.uk/openevenings)

**SCHOOL LEAVERS 2018**

Thursday 18th October 5:30 PM - 8:00 PM  
 Wednesday 14th November 5:30 PM - 8:00 PM

**OPEN EVENINGS**

Warrington campus  
Winsford campus

**01925 494494**

# CULCHETH & GLAZEBURY PARISH COUNCIL NEWS

## Your Parish Councillors

### NEWCHURCH WARD



Ben Alldred  
ben.alldred2016  
@protonmail.com



Jacqui Johnson  
01925 763435



Margaret Webber  
01925 762617

### GLAZEBURY & MEE BROW WARD



Anne Roberts  
01925 763047



Joan Grime  
01925 763631

### CULCHETH WARD



Peter Holmes  
Pdholmes4  
@gmail.com



Keith Bland  
01925 766641



Sue Bland  
01925 766641



Valerie Allen  
01925 767274



Ilayne Hutchinson  
01925 765131

## Saturday November 24th is Culcheth and Glazebury Parish Council Market Day

We are putting reminders in the local press and magazines. Several weeks before the day leaflets with more details will be delivered to homes. We will put the leaflet and further information on our Parish Website ([www.culchethandglazebury.org.uk](http://www.culchethandglazebury.org.uk)), in Culcheth Library and various points around the villages.

At the same time that our gazebos go up for the Market Day on November 24th there will be Christmas Fairs in the Parish and Methodist Halls, an art exhibition in the Culcheth Centre and the Police Museum will be with the Scouts in the Scout Hall on Jackson Avenue.

Come and support local businesses by enjoying yourself.

### *Culcheth Green*

Now the work on the drained area is finished we are now looking at improvements to the area surrounding it including work on the path.

### HS2

At the time of writing there is no more information available than on our August page in Culcheth Life but if a consultation comes forward in the meantime we will publicise it. Late news, the environmental consultation has been moved from September to October/ November.

### *Speed Indicator Devices*

The intention always was to have more and another one is in the pipeline.

### **Culcheth Library**

Friends of Culcheth Library continue to bring forward ideas. The latest is a Jigsaw Library with sessions every Monday 2.30 till 4.00 pm from October 1st. Or you can just borrow a jigsaw to do at home. Visit the library to find out more.

### *MadCulcheth*

Thanks to those who helped and took part in the Summer sessions at Culcheth High School. By now you should know about the sessions starting in September at a different venue.

### **Parking in the village centre**

We have not supported a four hour limit to parking on our two council car parks because it is a complicated issue involving Planning Policy and Council Estates departments. We have asked that they meet us so that we can avoid increasing the obstructive parking on local roads.

### *Law and order*

Search Culcheth Police Surgery or look in the library to see when these surgeries are. The Parish Council passes on concerns within our villages and we receive a monthly police report.

### **WBC Local Plan Latest News**

The government has recently published the revised National Planning Policy Framework (NPPF) which our Borough Council's Policies have to follow. The Office for National Statistics has recently released the latest population projections for Warrington. The Draft Local Plan will be published by the end of this year prior to a further round of public consultation early in 2019. Information on this and more Planning Policy News is on the Borough Council website [www.warrington.gov.uk](http://www.warrington.gov.uk)

### *Publication of information*

The Parish Council has adopted a publication of Information scheme. Details of who we are, what we do and how the public can access information is published on the main notice boards, Common Lane, Culcheth and Churchill Avenue, Mee Brow, Culcheth Library and on our website [www.culchethandglazebury.org.uk](http://www.culchethandglazebury.org.uk)



# Taylor Business Park sale completed for £19.2m

**THE sale of Taylor Business Park has just completed for £19.2m for all of the land and buildings associated with the site.**

The site near Culcheth, consists of 55.15 Acres of land with a mix of industrial and office space across 284,773 sq ft and has extensive HGV parking facilities.

Paul Taylor, MD of Taylor Business Park Ltd, said: "We're delighted that the buyers, Ribston, based in West Yorkshire have a similar hands on approach to ours and want to see the site sustain its high level of security and appearance that have been maintained since the 1960s. We're sad to see it go but this is a new chapter for everyone now. The plan is to reinvest the funds into Warrington and the North West, sticking to industrial and commercial property and steering away from retail. The sale of this site and the price it has achieved just go to show how much investors recognise Warrington and Cheshire as a key part of the Northern Powerhouse and how it's a logistical jewel in the crown of the North West with the convergence of so many major motorways and rail networks.

"We were very pleased to work with CBRE, Antrobus Capital Partners, KK Thompson solicitors and Claire Murphy Legal to achieve this. It was a challenging sale as there was a lot of unregistered land involved with the site dating back to the 60s when it was bought from the ministry of supply. Despite this the whole process, from going

on the market to the completion of the sale only took four months. We're looking forward to exciting times ahead. We've created a new management company, Taylor Estates, and we've already started looking at some interesting properties that are out there".

The buyer, Ribston, added:

"We are delighted to have completed the acquisition of Taylor Business Park which represents a significant holding for us and is complimentary to other assets in our Fund. From the first inspection we were immediately impressed by the attentive manner which three generations of the Taylor family had managed the estate.

"Having now acquired it, we look forward to forming our own

relationships with the tenants, many of whom have had very longstanding presence on the property. Having a material asset in Taylor Business Park consolidates our representation in the North West where we own a number of properties on Trafford Park and also in Preston, Wigan, Bolton, Accrington and Stockport."

Cushman and Wakefield acted for the purchaser during the sale.



Paul Taylor and Mike O'Halloran, Directors at Taylor Estates.

## Four years on, St Lewis is still a good school

FOUR years after St Lewis' RC Primary School, Croft was judged to be "Good" by education watchdog Ofsted, an inspector has returned to the school and reaffirmed the decision.

Inspector Michael Tonge said, following an inspection carried out in June: "This school continues to be good. The leadership team has maintained the good quality of education in the school since the last inspection."

In a letter to head teacher Michael Boland, the inspector adds: "Your commitment to creating an

inclusive and welcoming learning environment, centred on the school's core values of respect, courtesy, ambition and determination, is evident throughout St Lewis.

"You have successfully created a culture in which you support and value every individual as a learner.

"This is a school where leaders know each individual pupil's needs and abilities. As a result, all pupils, including those who have special educational needs and/or disabilities, are well supported to achieve."

Mr Tonge says the school's

leadership team has a clear understanding of what the school does well and is taking effective steps to address what needs to be improved further.

His report praises the behaviour of pupils and highlights strong relations between staff and pupils.

It also notes that parents are highly complimentary about the school.

However, Mr Tonge says more could be done to challenge the most able pupils to ensure they reach the very highest levels of achievement they are capable of, particular in

writing and mathematics.

The report notes that governors are actively involved in the school, making regular visits to review how well the leaders are addressing school improvement priorities.

They challenge leaders when they believe the school can do even better.

In order to reach the highest level of "outstanding" the inspector recommends the most able pupils are challenged to improve their writing skills that a large proportion go on to achieve at greater depth.





## OPEN EVENTS

WED 10 OCT	5:30pm - 8:00pm
THU 11 OCT	5:30pm - 8:00pm
SAT 3 NOV	10:30am - 12:30pm
WED 22 NOV	5:30pm - 8:00pm

for ENROLMENT Sept 2019

REASONS TO CHOOSE PRIESTLEY IN 2018 / 2019

- Consistent excellent record in both academic and vocational subjects
- Choose from 70 courses that now include subjects as diverse as Criminology and Architecture
- Sign up to our Category 3 Rugby Academy, which is being run in partnership with Warrington Wolves
- Priestley students progress to top university and apprenticeship places as well as employment

01925 633591    [www.priestley.ac.uk](http://www.priestley.ac.uk)

# Club offers all-year tennis following £15,000 upgrade



## CULCHETH Tennis Club is on the look out for new players following a £15,000 overhaul of its facilities.

The all-weather artificial grass courts have been rejuvenated and floodlit and will now be available throughout the year.

The club plays in the Warrington District League and has four men's teams – the 1st team playing in division one – two women's teams and two mixed teams.

Over the years, the club has acquired a fantastic reputation for success on court and is led by club coach Gary Brookes, a fully qualified LTA coach with 20 years' experience.

The club is looking for new members of any experience level, including novices.

A club spokesman said: "There is an excellent set up for juniors with regular group or individual lessons and numerous social tennis sessions for all levels of ability - meaning anyone get involved! Adult membership available for £125/year, retired £65, under 18's £40, under 15's free"

For more information contact: [info@culchethtennisclub.co.uk](mailto:info@culchethtennisclub.co.uk)



## Disappointing but positive season for cricket club

GLAZEBURY finished a disappointing 10th in Cheshire Cricket League division four.

But there was a comfortable 41-point gap between them and the teams below them and with seven wins under their belt and no drawn games the team clearly played a positive brand of cricket under Aussie skipper Anthony Meulman.

There were some fine individual performances, notably from Jack Warhurst, who scored 446 runs at an average of 29.73 and Sam Stanier who scored 406 at an average of 29.00.

Stanier's haul included an unbeaten century while Warhurst

hit three 50s with a top score of 84.

Phil McCue, who batted only nine times, scored 273 runs at an average of 39 and including two centuries.

Ian Black, who also batted only on nine occasions, scored 305 runs with an average of 33.89 and a top score of 83.

Stanier was also the club's leading bowler, taking 61 wickets with a best performance of 7-27.

Glazebury 2nd finished fourth in their division, winning four matches, drawing three and having a number cancelled.

# WI members look back 100 years

**NEWCHURCH WI's monthly meeting began with a look back to 1918. President Eileen Griffiths wearing early 20th century costume with a big hat and a purple Suffragette sash described some big changes of that year - the vote for women over 30, the first lady MP, the new school leaving age of 14 and of course the November Armistice.**

Secretary June Cope and other committee members were also in costume with green or purple sashes which demanded "Votes For Women". Eileen also greeted six "birthday girls" and thanked Barbara Alldred for her gift of a charming pink pot plant.

Speaker Brian Halliwell also looked back in time - to the "Golden Age of Comedy". He used his own clever sketches of comedians from the 1900s, many of whom were from the North West. Members had to identify them, with some clues from Brian and he then gave the background to their careers, without any notes to help his memory! Some forgotten old stars came to life again, as well as known favourites like Arthur Askey, Jimmy Clitheroe, Bud Flanagan and

Max Miller. Brian remembered how important radio shows were for early comedians, as well as music halls and variety theatres.

Films and TV shows were good for some like Arthur Askey but not for all. Kath Hanley, in her vote of thanks, expressed her wonder at Brian's knowledge of his subjects' lives and Brian offered to continue Newchurch's theatrical education at some future date!

He stayed for tea served by Ann Langridge and Marjorie Pugh, and this included special supper boxes with Suffragette emblems on their lids. Eileen reminded members to look out old photos for a November competition and closed the meeting with special thanks to Doreen Procter and Margaret Harrop for preparing the "Suffragette Supper".

## WI coffee morning for women's charity

MEMBERS of Lowton WI will be holding a coffee morning on October 6, from 10am to 12 noon to raise money for the Well Women's Clinic in Leigh.

The coffee morning will be at St Mary's Community Centre, Newton Road, Lowton, and admission will be £3.

The Well Women's Clinic is a voluntary organisation which provides support for women

and members felt that because it was the centenary this year of the suffragette movement, it was important to support a charity for women.

Lowton WI meet on the first Thursday of the month at 7.15 pm at Lowton Social Club on Newton Rd, Lowton. Anyone interested in arranging a visit should call Lin Hayes for details on 01942 207764.

## Nursery fencing "like Fort Knox"

FENCING erected around a new nursery to open shortly in Jackson Avenue, Culcheth has made the building "look like Fort Knox."

That's the view of a number of residents who have contacted Culcheth and Glazebury Parish Council.

Now the parish council is querying whether the fencing has the benefit of planning permission.

Cllr Sue Bland said: "Residents say the fencing has 'boxed in' the Culcheth Centre - particularly the

library room in the Culcheth Centre.

"The view from the library window is completely blocked by the fence - and a ginnel has been created which would attract all sorts of anti-social behaviour.

"The fencing is all round the perimeter of the building - it has taken away the open plan area in front of the Culcheth Centre and the nearby houses."

The nursery is to open in the former doctor's surgery which closed some time ago.



### CLASSIFIED

#### CARPET CLEANING

**A1 STAINBUSTERS.** A Warrington company cleaning carpets, hard floors, Upholstery (Leather + fabric) and curtains in situ. FREE quotes for domestic and commercial. Approved carpet cleaners for Hancock and Woods for over 10 years. Call John on 01925 852088 or 07765 314080 (04/19)

**SIMPLY THE BEST CARPET CLEAN YOU** will ever have. Cleaners UK Ltd. Est 28 yrs. Have your carpets & sofas beautifully deep cleaned leaving them fresh smelling & colour restored. Latest & best methods. Dry/steam. Leather cleaning, oriental rug specialist. Professional, reliable & affordable. For more info call Neil Riley on 01925 264989/07831 336060 [www.cleaners-uk.net](http://www.cleaners-uk.net) (02/19)

#### CHIROPODY

**KATHRYN GRACE AND ASSOCIATES,** D.Pod.M, M.Ch.S., HCPC registered. Chiropractors/ Podiatrists, 30 years experience, offering friendly and professional footcare, also Gait Analysis. Care home & commercial contracts are welcome. Culcheth based. Tel 01925 762404 [www.parkviewcentre.co.uk](http://www.parkviewcentre.co.uk) (012/18)

#### CLEANING SERVICES

**arleys angels**

- Spring Clean Specialists
- Presenting your home for sale
- Moving house
- After building work cleans

**01925 266834**

... because you're worth it!

**CLEAN2PLEASE.** Weekly/Fortnightly, one-off clean, end of tenancy, clean multiple occupancy, housing cleaned ie (lounge, kitchen and bathrooms). Reliable & friendly. Fully insured. All areas considered. Price £10.00 per hour. Tel. 07952655979. (012/18)

#### COMPUTERS

**AED COMPUTER SERVICES.** For all your PC servicing requirements including: Hardware repairs /upgrades, Software / Operating System re-installs, Virus removal, basic training: Tel: 01925 766426, mobile: 07870 260657, email: [enquiries@aed-cs.com](mailto:enquiries@aed-cs.com), Web: <http://www.aed-cs.com> (04/19)

#### HOME SERVICES

**ATLAS**  
Your friendly local independent pest controllers

SUMMER SPECIALS:

WASP CONTROL

£39



INVASIVE BEE CONTROL

£55

Affordable, professional, guaranteed service. Fully insured, fixed prices - no surprises once on site! Discrete vehicles, no embarrassing signs  
**07999 487 925 / 01925 445 222**  
[www.atlas4u.co.uk](http://www.atlas4u.co.uk) (06/19)

#### PAYROLL

**WHY TRY TO BE A PAYE EXPERT?** Watkinson Black can provide a cost effective payroll service, releasing you to concentrate on your business. For further details please phone: 01925 413210 or e-mail: [info@warringtonaccountants.co.uk](mailto:info@warringtonaccountants.co.uk) (05/19)

#### TREE SURGERY

**SAM WOOLSTENCROFT TREE SERVICES.** Commercial and Domestic tree and Landscaping services. NPIC qualified, Safe Contractor approved and fully insured. Friendly and reliable, local family business. Contact Sam 01942 673736 or 07565 534343 (02/19)

#### TUITION

**SPANISH LESSONS IN CULCHETH** Daytime tuition in Spanish grammar for adults - Beginners or revision. Experienced retired tutor; friendly relaxed lessons for singles or couples. Tel 01925 765 962 or Mob 07922 155 275 (012/18)

#### WINDOWS & GLAZING

**LEIGH GLASS LTD.** For all of your glass requirements please contact. Tel 01942 678440 Fax 01942 261728 email [leighglass@hotmail.co.uk](mailto:leighglass@hotmail.co.uk) (01/19)

**Promote your business to thousands of local people with a**



**classified for just £72 plus VAT for six months.**

**For more details call 0800 955 5247**

# NEW PLANS SPARK FURTHER CONCERNS FOR TENANTS AND LANDLORDS

**CONTROVERSIAL GOVERNMENT PLANS FOR MINIMUM THREE-YEAR LETTING AGREEMENTS ARE CAUSING NEW DEBATES BETWEEN LANDLORDS AND TENANTS**

## **The Proposal**

The government is proposing a compulsory minimum three-year tenancy agreement to increase security for those who rent a home. However, does this really improve the lifestyle for tenants? Well according to a survey by the Deposit protection scheme (DPS) almost 40,000 tenants was surveyed and over 80% prefer tenancy agreements which last no longer than 12 months!

So what are the pros and cons of a three-year agreement?

## **The Pros**

- More security for tenants
- Less void periods for landlords
- Tenants can put down roots building stronger Communities
- Tenants may be able to leave before the 3 years

## **The Cons**

- If tenants falls into arrears or becomes a problem, longer eviction processes may occur
- Less flexibility for tenants to move property or area if desired
- Less flexibility for landlords if the circumstances changed during the tenancy
- Landlords are locked in for 3 years, with no get out clause

There are talks about including a break clause after 6 months, but doesn't that defeat the whole object?

**So what's your thoughts are you a landlord with concerns about this? Or do you see a benefit? Or are you a tenant that has a specific viewpoint?**

**Why not join our discussion on our Facebook page 'Courtyard landlord news forum' or call us direct to discuss on 0192575700.**



*Victoria  
Head of Courtyard Homes*

**Courtyard**  
ESTATE AGENTS  
[www.courtyardhomes.co.uk](http://www.courtyardhomes.co.uk)

**T: 01925 767000 E: [ask@courtyardhomes.co.uk](mailto:ask@courtyardhomes.co.uk)**

**15 Jackson Avenue, Culcheth, Warrington WA3 4EJ**



[www.facebook.com/courtyardestateagents/](https://www.facebook.com/courtyardestateagents/)



[@courtyardhomes1](https://twitter.com/courtyardhomes1)

**Call us for a free, no obligation valuation and marketing advice**