

Lymm

Life

FREE EVERY MONTH

**August 2018
Issue: 233**



urban

BUILDING PROJECTS LTD

**Extension &
Building Renovation
Specialists**

Tel: 01925 730888

www.urbanbuildingprojects.co.uk



Historic day!

Centre pages



**LYMM
PARISH
COUNCIL**

Approved by Lymm Parish
Council as the official
magazine for Lymm

Hale

CARPETS & FLOORING

See our main advert
on page 12

01925 756275
www.halecarpets.com

Banner & Co

Independent Residential Sales
and Letting Agent

See our main advert
on the back page
for details

01925 753636

idfm

THE COMPLETE BUILDING SOLUTION

EXTENSIONS
DESIGN & BUILD
NEW BUILD

01925 598120
WWW.IDFM.SOLUTIONS

eden

RESIN BOUND SPECIALIST



www.eden-resin.co.uk
01925 263125

Regular news updates at www.lymmmlife.co.uk

Editor
Gary Skentelbery

Production
Paul Walker

Advertising
James Balme
Freephone
0800 955 5247

Editorial
01925 623633

Email
info@lymmlife.co.uk

Websites
www.lymmlife.co.uk
www.culchethlife.com
www.frodshamlife.co.uk
www.warrington-
worldwide.co.uk
www.warrington.tv

Address
New Media Centre
Old Road Warrington
WA4 1AT

*Lymm Life is published
monthly by Orbit News Ltd.*

*The contents of this magazine
are fully protected by copyright
and nothing may be reprinted
or reproduced without prior
permission of the publishers.*

*The publishers are not liable for
any statement made or opinion
expressed by third parties in this
publication.*

Printed by TwentyFourSeven

Editor's Comment



WITH so many positive things going on in our community it is so frustrating to have to report on the negatives like the recent arson attack on the play equipment at Ridgway Grundy Park.

I struggle to comprehend what is going through the mind or minds of those responsible, especially at a time when we are constantly seeing fires breaking out all over the place due to the hot, dry weather.

Our fire service have far more important tasks in hand than having to turn out at all hours to deal with irresponsible acts of arson.

Fire crews from Lymm were also recently involved in a rescue attempt on cygnets trapped in fishing line at Lymm Dam. Sadly one of the young swans died but the other was successfully rescued.

One wonders whether more needs to be done by local anglers to make sure snagged or discarded fishing

line is not left in the dam, as it is clearly lethal to local wildlife.

Turning to the positives I once again have to congratulate all those who give up their free time to organise our many and varied community events.

This year's Lymm Festival, now celebrating an amazing 20 years, was once again an over whelming success and just seems to go from strength to strength each year.

Meanwhile Lymm Historic Transport Day Event Director Alan Williams continues to amaze me. Those who know Alan, will know he was going through some difficult times in his personal life while still helping co-ordinate this year's event. What

he and his wife Su have achieved for our village is unbelievable and not only do we have a fantastic event, but also a permanent heritage centre for future generations to enjoy.

As far as I am aware Lymm Parish Council has never bestowed the freedom of Lymm on anybody - but if they can and if anyone is deserving of it - Alan and Su Williams should be at the front of the queue!

**Deadline for the
September issue
of Lymm Life is
July 31**

N & J STANHOPE

Coal and Log Supplies

Best Quality Coal
Smokeless Fuel
Logs Supplied in Bags and Bulk
Fresh Bacon and Eggs
Open 6 Days. Closed Sunday

Broomeedge Farm
Burford Lane, Lymm WA13 0SE

Tel: 752830
Mobile: 07979 785 421

Professional Ear Wax Removal



CHESHIRE
Natural
Health

Specialists in all aspects
of Ear Care
Hearing Aids - Hearing Tests

Please call to find out more
Tel: 01925 730123
www.cheshirenaturalhealth.co.uk
Cheshire Natural Health, Beehive House, Tarporley Road, Stretton, Warrington

INDULGE YOURSELF

- WORKOUT & RELAX -

Get Ready for Summer with
our 6 week membership.

FOR ONLY
£75.00



In 2 weeks you will feel it, in 4 weeks you will see it, in 6 weeks you will hear it.

Make a start on the journey to a healthier you in just 6 weeks and join today.

Contact us now on **01925 73 00 00** or email us **leisuresales@theParkRoyal.co.uk**

Ts + Cs apply. Subject to availability. Offer valid until 31st August 2018. Bootcamp sessions are excluded from this offer and will incur an additional charge.
For full terms and conditions, please speak to the health club team.



THE PARK ROYAL

www.theParkRoyal.co.uk

Residents' anger over park vandalism

RESIDENTS have reacted with anger and disgust over an incident of sheer vandalism in Lymm's Ridgway Grundy Memorial Park.

A fire was started late at night on the children's play area, damaging play equipment and the rubber safety flooring.

Firefighters from Lymm Fire Station

dealt with the blaze and were at the scene for about half-an-hour.

Debris was quickly cleared from the site the following day – but the damaged play item was unusable.

The fire had clearly been started deliberately and police have appealed for information from the public to help trace the culprits. Anyone who can help should call 101 or use the anonymous Crimestoppers hotline on 0800 555 111.



Rescue operation at Lymm Dam as cygnets trapped in fishing line

A fire and rescue crew from Lymm were called in a bid to rescue a pair of cygnets trapped in fishing line at Lymm Dam.

The stranded baby swans were spotted by local dog walker Andy McLeish, who alerted the emergency services.

A pair of nesting swans recently hatched five cygnets at the dam and two had become trapped in snagged fishing lines.

A member of the public attempted to wade out but the water was too deep.

Four members of White Watch based at Lymm Fire Station used a special floating board as they mounted a rescue operation.

Sadly it was too late for one of the cygnets which died before they could rescue it – but its sibling was rescued and re-united with its mother.

Andy, who runs Bridgewater Lettings in the village, watched the drama unfold after alerting emergency services.

"Thanks to the actions of White Watch one of the cygnets was rescued – but sadly the other one died," said Andy.



Sophies Soft Furnishings

Curtains • Roman Blinds
Cushions • Tiebacks • Poles
Tracks • Valances • Pelmetts

We design, make and fit to meet your exact requirements.

For free home visit or advice ring **Anne on 01925 754446**
www.sophiessoftfurnishings.co.uk

We Clean Ovens

...so you don't have to!

Call us today to have your cooking appliances sparkling, using our own eco friendly products.

Our oven cleaning experts will leave you free to enjoy your valuable leisure time.

Call TODAY for LOCAL Service **01925 453377** ovenwarrington.net

Rated 5.0/5.0 on TRUSTst

oven oven valeting service
Local | National | Affordable

Rosebank & Naturegarten

SOME FUNDED 15 AND 30 HR PLACES AVAILABLE FOR SEPTEMBER

We have great spaces and places for babies and children at Rosebank and Naturegarten.

Part time, full time sessions available for term time and all-year round

Children and staff are really liking the new pre-school rooms and bug-hunting in their own separate garden.

THE ROSEBANK CENTRE & ROSEBANK NATUREGARTEN, PEPPER ST
WWW.RNGROUP.CO.UK 01925 320161
@rosebankandlakescentres

QUALITY KITCHEN FACELIFTS | Transform your kitchen this Summer

Read our reviews on Checkatrade.com

Est. 1999

why replace when you can reface?

- Installed by local skilled tradesman
- Door swaps to full kitchen tailored to your needs
- Senior citizens discount

DREAM DOORS
NEW LIFE FOR OLD KITCHENS

Call Lynn for a Free Quotation:
01925 211 308
www.dreamdoors.co.uk

wa@dreamdoors.co.uk
www.dreamdoors.co.uk
Dream Doors Northwest, 92 Knutsford Road, Grappenhall, Warrington, WA4 2PJ

What's On

in conjunction with **Lymm Parish Council**



August - No meeting
LYMM PARISH COUNCIL

LYMM THURSDAY EVENING BRIDGE CLUB

Lymm Village Hall every Thursday 7pm

MAPLE LODGE ART GROUP

Meet each Wednesday 9.30am - 12.30pm
Oughtrington Community Centre, Lymm
Details: 01925 755126

ROTARY CLUB OF LYMM

Every Wednesday at Statham Lodge Hotel
7.15pm for 7.30pm
Contact the secretary 01925 650189

LOVING HEARTS & HANDS

Knitting for charity at Lymm Methodist Church,
2nd and 4th Thursday each month.
1.30pm - 3pm. Details: 01925 753298

MARKET LUNCHES

Eagle Brow Methodist Church
3rd Thursday in the month
Light lunches 12 noon till 2pm. All proceeds to
Youth For Christ and YMCA Room at The Inn

LYMM SCOTTISH COUNTRY DANCE CLUB

St Mary's Church Hall
Second and fourth Fridays (Sept - May)
7.30pm. Details: 753853

GARDENING CLUB

Meet Third Wednesday of the month
Lymm Baptist Church, Higher Lane. 7.30pm
Visitors welcome. £2 includes tea and cake

LYMM FLORAL ART GROUP

Lymm Village Hall
Third Monday of the month (except August)
at 7.30pm)

LYMM PHOTOGRAPHIC SOCIETY

Every 2nd and 4th Wednesday
(ex July & Aug), 7.30pm
Spread Eagle pub, Eagle Brow.
Details: www.lymmphotosoc.org.uk

LYMM WINE AND BEER CIRCLE

3rd Wednesday of the month, 8pm
The Spread Eagle Hotel
Details: 01925 604400

LYMM CONCERT BAND

Rehearsals every Thursday evening
United Reformed Church, 8pm.
Details: 01925 752934

LYMM WI

Every second Wednesday, 2-4pm at Lymm
Youth and Community Centre. Visitors
welcome.

LYMM BOOK CLUB

Second Thursday of the month 7.30pm,
Spread Eagle, Eagle Brow. Details 01925
752371

LOW CARBON LYMM

Every second Monday of the month. 7.30pm,
Spread Eagle. 07786 074741 all welcome

4LYMM VOLUNTARY ORGANISATION

Meet every 2nd Monday at 7.30pm in the
Bridgewater Club, Whitbarrow Road.
All welcome. Tel 01925 756378 for details.

LYMM AND DISTRICT MIXED VOICE CHOIR

Every Wednesday 7.30 Lymm Methodist
Church. Contact 01925 601664.
cath@cstones.co.uk



**LYMM
PARISH
COUNCIL**

No meeting in August

Cricket club to hold open day

LYMM Oughtrington Park Cricket Club is to hold its annual Open Day at their Oughtrington Lane ground on Sunday, September 2

The all-day event – 11am to 5.30pm – will include a barbecue, tombola, bouncy castle, and a "Kids v Parents" match at 11am.

Officials hope the weather will be fine – but even if it isn't it is unlikely that rain will stop play!

In the afternoon there will be a Presidents' XI v Chairman's XI game – and all day there will be opportunities for visitors to test their skill in the nets against a bowling machine capable of delivering a ball of up to 100mph.

The day is designed to attract fresh talent to the club, with new players of any ability welcome.

Lymm Oughtrington Park fields two sides in the UKFast Cheshire League, with the 1st XI currently in the 1st division.

The club also fields a women's team in the Cheshire Women's League.



Last year's kids vs parents match in progress in the rain.

Memories of a farmer

TOD Bulmer owner of Kenyon Hall Farm, Culcheth, was guest speaker at the monthly meeting of Heatley WI.

Together with his wife Tod has been running the farm since 1978 but it has been in the family as far back as the 15th century, originally as tenant farmers then owners when his grandfather Walter Boardman purchased the land in 1919.

From a sleepy 166 acres the farm now boasts 500 acres plus and is a leading "Pick Your Own" location, with the addition of a well stocked shop, including a plant centre and friendly cafe.

After the vote of thanks, members were treated to strawberries from the farm and cream and a glass of Prosecco.

Members were reminded of coming events, including a tour of the Manchester Police Museum in September and afternoon tea at the Fishpool Inn, Delamere, in October.

simplesolutions
Financial Management Ltd
INVESTMENTS & PENSIONS



INVESTMENTS

Our investment expertise will ensure that you have the most suitable investment to help you achieve your financial goals.

We use:

• Asset Allocation • Risk Profiling • Diversification • Correlation

PENSIONS

Pensions have changed since the March 2014 budget and you now have a lot more options to consider

TECHNOLOGY

Simple Solutions uses the latest technology to keep you updated, even when you are on the move or abroad, check out our website for more details.



The Base, Dallam Lane,
Warrington, Cheshire
WA2 7NG

Tel: 01925 266628 Fax: 01925 267043

www.simplesolutions.financial @SimpSolsIFA

Simple Solutions Financial Management Ltd is authorised & regulated by the FCA. The registered office is 1st Floor, 67 London Road Stockton Heath, Warrington WA4 6SG. Registered in England & Wales. The company Re No 6920858.



Thelwall Upholstery

FOR THE MOST COMPETITIVE RATES IN THE AREA

49 Knutsford Road, Grappenhall WA4 2NR

Call Sean on: 01925 604770 or mobile: 07799 228080

www.upholsterywarrington.co.uk

For all your upholstery needs

SPECIALISTS IN:

- Re-filling Cushions • Re-springing • Full Re-upholster
- Dining Furniture • Headboards

A wide range of sample books to choose from
All at competitive rates

PHONE FOR YOUR FREE ESTIMATES



Meet your MP

Faisal Rashid

Faisal holds regular surgeries to discuss any issues that you may need help with. **Private surgeries** take place every Friday. Simply call the office on **01925 657600** to book an appointment, you can also send an email to faisal.rashid.mp@parliament.uk

Stay up to date with all current news, policies, and events at www.faisalrashid.com and keep an eye out for regular roving surgeries coming soon to a doorstep near you!

Follow Faisal on [@faisalrashid6](https://twitter.com/faisalrashid6) and facebook.com/FaisalRashidMP where you can find out about current issues, street surgeries and more.



“Working hard for all communities”
Warrington South

Appleton | Bewsey & Whitecross | Chapel Ford & Old Hall | Grappenhall | Great Sankey North & Whittle Hall | Great Sankey South | Latchford East | Latchford West | Lymm North & Thelwall | Lymm South | Penketh & Cuedley | Stockton Heath

LEADERS IN FAMILY LAW.

Delivering the results when it matters

Specialising in:

Divorce & Separation

Financial Settlements

Child Related Matters



Stockton Heath 01925 912 277

Hale 0161 926 1430

Manchester 0161 834 2623

caroline.swain@bpsfamilylaw.co.uk

www.bpsFamilyLaw.co.uk

Less is More!

- Get paid quicker – Improving your cash flow
- Less time spent sorting old receipts – Free up countless hours each week.
- Less jargon and more proactive advice – Watch your business flourish.

Don't let these issues hold your business back.

To find out how we can remove your financial headaches call us:

01925 761600

or visit us at:

www.stylesandco.co.uk

styles and co.
chartered accountants



First police community base opens at Lymm

WARRINGTON'S first new police community base has officially opened at Lymm Youth and Community Centre.

Cheshire's police and crime commissioner David Keane and acting chief constable Janette McCormick attended at Lymm Youth and Community Centre to officially declare the building open.

The centre is one of 23 community bases in the Warrington local policing area and 122 across Cheshire providing a base for PCSOs to spend more time in the heart of the communities they serve.

Housed in existing buildings, the bases will provide a facility for PCSOs to hold regular surgeries or have confidential discussions with victims, witnesses and other members of the public.

PCSOs will also be able to begin and end their daily shift at their community base to increase the amount of time they have to meet local residents and deal with local issues.

David said: "I am proud that we've been able to introduce a police base and PCSO for every community across Cheshire to help re-establish community policing across the county.

"When I was elected I promised the Cheshire residents 'more feet on the beat' and this model is helping us put community officers back where they belong.

"Under the previous model, some PCSOs were travelling miles each

day to the community they were based in, wasting valuable time that they could be spending in their communities.

"The new bases will help increase police interaction with individual communities, providing a named, recognisable officer and an easily accessible police base for local residents in shared community buildings at no extra cost to the taxpayer.

"I'm extremely grateful that Lymm Youth and Community Centre have been so supportive of the work police are doing in the Lymm area and have let us use the base free of charge."

The launch event in Warrington is one of four events being held across Cheshire's four local authority areas over the next few weeks for the new community base model.

The Lymm event was attended by a number of local councillors, including

borough councillors Cllr Anna Fradgley and Cllr Kath Buckley and the volunteers who run Lymm Youth and Community Centre.

Steve Griffiths, chair of Lymm Youth and Community Association who run the centre, added: "We are happy to have local police officers using the centre as a community base in what is a hub for the local community.

"Our function is to serve local people and we are happy to continue our very good relationship with Cheshire Police and they're always welcome to drop in even if there isn't a scheduled drop-in session."

Acting chief constable Janette McCormick said: "We are delighted to be able to open these bases at the heart of each community in Cheshire.

"This will bring policing closer to the communities we serve and will mean our community officers are more accessible and local residents are able to directly speak to PCSOs in their areas."



KEATE HOUSE CARE HOME

Quality person-centred care for your elderly loved one

Keate House is an independent family-run Care Home, specialising in providing Residential, Dementia, Respite and Day Care services for the elderly. Situated in the beautiful village of Lymm, our lovely purpose designed home is supported by our compassionate team, dedicated to providing only the best in quality person-centred care in our happy, stimulating and homely environment.

- Residential Care
- Respite Care
- Dementia Care
- Day Care

To talk to one of our Care Managers or to arrange a visit,

Call: 01925 752091 Email: info@keatehouse.com

Brookfield Road, Lymm, Cheshire WA13 0QL

www.keatehouse.com

Enriching life with quality care





BESPOKE BUILDS

— OF CHESHIRE —

Ethos;

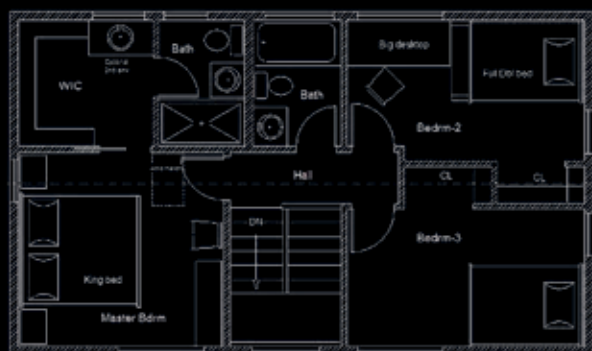
Newly incorporated in 2018, Bespoke Builds of Cheshire Ltd founders have been a part of the construction industry for a combined 50 years. We have a keen eye for detail and will commit to provide a stress free experience for your building project.

Far too often customers are let down and are supplied a poor quality of work for quite often large sums of your hard-earned money, thus giving the building trade a bad name. Our business model is to provide high quality workmanship for a fair price.

We can offer a full 'Turn key' service, down to the decoration of your newly finished building project with contacts for the most prestigious of tastes, we truly can offer it all.

Our commitment to the customer is providing high quality work using the industries best materials which will better exceed the expectations of the customer.

Contact us now for a free no obligation quote for your bespoke build



01925 933 080



07957 994 711



info@bboc.co.uk

Home Builds • Home Extensions • Orangeries • Property Refurbs

— WWW.BBOC.CO.UK —

Spitfire takes to the skies at Lymm

GLORIOUS sunshine ensured bumper crowds at Lymm Historic Transport Day which included a flypast by a Battle of Britain Memorial Fund Spitfire, marking the centenary of the RAF.

It followed a fabulous parade of vintage and collector vehicles through the village winding their way onto the May Queen Field where they were joined by various exhibitors and community groups.

When local man Alan Williams first organised the event in June 2013 to help raise funds for the ten day Lymm Festival, little did he know it was to become a key event on the region's transport event calendar as well as generating a wide range of education and

heritage spin-off benefits.

"We do have a unique setting" said Alan, who is still the Event Director and was delighted with the fantastic weather and huge turnout.

It was the second time the show took to the skies with a flypast by a Battle of Britain Memorial Fund Spitfire.

Exhibitors included the North West Casual Classics Car Club which has been supporting the event since year one, the Burtonwood Association who were

marking the 70th anniversary to the day of the start of the Berlin Blockade and Warrington's own Buses, who provided a vintage double decker shuttle from the centre of Warrington.

The Batmobile and Dinosaurs were also on hand to entertain the youngsters.

Key sponsors this year included local building supplies company MKM and Central Self Drive who are celebrating their 50th anniversary, H&H Classic Cars,



Urban Building, Redex and KC Autos.

The village was also buzzing with traction engines and historic working boats and model railways as part of first weekend of Lymm Festival which was celebrating its own 20th anniversary.

For more pictures and video coverage of the event check out the www.warrington-worldwide.co.uk website and search Historic Transport Day




Only the best is good enough!

<p>Before</p> 	<p>After</p> 	<p>Youngs Roofing Contractors Ltd pride ourselves on our PROFESSIONAL, RELIABLE, AFFORDABLE & FRIENDLY service. We provide a complete expert range of professional roofing & scaffolding services throughout the NorthWest, using time served tradesmen.</p> <p>We undertake installation & repair work on all domestic and commercial property types. From slate & tiled roofs to flat roofing structures, our team has the experience, the knowledge and the ability to undertake all of your requirements. All Youngs work comes with an exclusive 10 year workmanship guarantee, giving you confidence that you're well 'covered'.</p>
<p>Youngs Roofing Contractors Ltd have been established for over 10 years, with over 20 years experience</p> <ul style="list-style-type: none"> - All aspects of roofing & scaffolding covered. - Experts in both GRP & EPDM flat roofs, with 20 year guarantees. - From full scale roofs to repair work. - FREE no obligation quotations. - All works guaranteed. - NO JOB TOO BIG OR TOO SMALL 		



If you need a skilled roofer in Warrington or surrounding areas of the NorthWest please contact us

T: 01925 568163 / 07878 741467
 E: info@youngs-roofing-contractors.co.uk

www.youngsroofing-warrington.co.uk

Lymm Historic Transport Day



Picture: Darren Moston



PRIMROSE HILL NURSERIES

**SUMMER
BEDDING
PLANTS &
HANGING
BASKETS
READY
NOW!**

**DISCOUNTS
FOR
QUANTITY**

*Caring Family
Business*

*Open 7 days
a week*

*Warrington Road,
High Legh,
Knutsford, Cheshire
WA16 0SQ*

Telephone
**01925
752635**

WILLIAM H. LILL & CO.
part of **mlp law**

Providing support & advice
whatever your needs

MLP Law provides a full range of legal
services to private and commercial clients

We understand that our clients are individuals, business owners and
corporates, which is why we provide support and advice whatever your
needs. For us, it's about building relationships and providing a service to
guide our clients along their business and personal journey.

Our Services

- Wills, Trusts & Probate
- Employment & HR
- Dispute Resolution
- Corporate & Commercial
- Property, Real Estate & Landlord/Tenant
- Residential Property & Home Moving



01925 753 170

www.mlplaw.co.uk

hello@mlplaw.co.uk

William H. Lill & Co.
part of **mlp law**



9 The Cross, Lymm, Cheshire, WA13 0HY



Curtain comes down on glorious Lymm Festival

THE curtain has come down on the 20th Lymm Festival which provided eleven days of fun and entertainment blessed with glorious weather.

Chairman Ian Marks said, "We were delighted with the superb quality performances, events and exhibitions we put on in this our special year."

Deputy Chairman David Smith added, "Feedback from the audience and spectators was extremely positive, which gave us all a great deal of satisfaction after all the hard work put in by our volunteers."

The ever popular FoodFest kick started the 20th annual Lymm Festival, attracting thousands of people into the village.

Special guests included Mayor of Warrington Cllr Karen Mundry and Warrington South MP Faisal Rashid.

As well as multi-cultural food offerings from around the world, there was also street entertainment and live music to entertain the crowds.

The event also saw the launch of the third exhibition at Lymm's Heritage Centre, which was officially opened by Chairman of the Parish Council, Cllr Anna Fradgley, who was also joined by the Mayor of Warrington.

The exhibition looks at the history of Lymm's waterways.

The winners of a special Movie Storyboard competition were Louise Brayne (7) Fiddlers Lane Primary School, Irlam and Faith Holdsworth (11) Ravenbank Primary, Lymm.

The competition was launched following a workshop with Just English Tuition and Kate Hulme Illustration at Lymm Heritage Centre to link with this year's Movie themed Lymm Transport Day.

The winning entries can be viewed at Lymm Heritage Centre.

The Festival continued with many great events for every taste including a sold-out sunset cruise which went down very well.

Lymm was also delighted to welcome the world-famous Aquarelle Guitar Quartet who joined the Alteri Chamber Choir to present a colourful programme of Brazilian music at St Mary's Church.

Meanwhile headliner and former Goodie, Tim Brooke-Taylor was in conversation with Chris Serle. Tim shared a wealth of anecdotes and

stories about many of the greats of comedy from his career on stage, screen and radio with a full house at Statham Lodge Hotel.

There was also the welcome return to the Festival of Lymm Photographic Society with a stunning exhibition of local scenes at Lymm Library.

There was also a memorable evening of popular songs performed by the local Big Sing Choir.

The sell-out comedy club returned with a hilarious bunch of comedians, including Milo McCabe's character Troy Hawke with some hilarious scrabble-based conspiracy theories!

Lymm and District Chorus gave an extremely moving performance of 'The Armed Man'. It's powerful message is that peace is preferable to war.

There was also a fascinating panel discussion with three leading crime writers. The audience learned all about the Golden Age of crime writing. At Lymm High School there was a top-quality performance by Time Travelling Magicians Morgan and West which appealed to both young and old.

Audiences were also treated to a truly authentic blues performance by Kyla Brox. She is one of the leading singers of her kind in the country. Also in the evening the audience was rapt with attention listening to a talk about the wartime Enigma Machine. The first half was on how the machine worked and the second half on the people who worked at Bletchley Park. It turned out that one of the audience, in his 80's, had actually worked at Bletchley.

There was also the ever-popular Family Garden Party which took place in the grounds of Lymm Hall. A wide range of entertainment was on offer including CBeebies' Mr Bloom. In the evening Classic FM's John Suchet gave an extremely erudite and polished talk on Mozart and Strauss.

Hundreds of people also toured the village visiting eleven Open Gardens and not forgetting that throughout the Festival period, 25 scarecrows decorated the village to the theme of 'Let's Party'.





Reflecting on your marriage and don't know what to do?

Slater Heelis has provided expert advice to families for over 240 years.

Our team of Resolution family specialists are here to support you with first-class legal advice to provide the direction you need during separation. The team has expertise in divorce, separation, civil partnerships, finances and children arrangements. When it's appropriate for you, we are also able to offer collaborative law and mediation services.

Our family team all live in the South Manchester and Cheshire area. Living within the same community provides us with unique insight into what affects your daily lives. You are just a ride away from one of our offices in Sale, Timperley or Manchester. We have additional meeting facilities in Warrington.

“Living in Cheshire offers the best of both worlds, idyllic countryside with a close-knit community and easy access the Manchester’s vibrant city centre for work and play. I couldn’t think of anywhere better to raise my young family.”

Phillip Rhodes
Family Solicitor



Get in touch with our family team

family@slaterheelis.co.uk
0161 672 1247
slaterheelis.co.uk



slaterheelis ^{LLP}
SOLICITORS

 @SlaterHeelisLaw

 /slaterheelis

exceeding expectations

Hale

CARPETS & FLOORING

NEW SHOWROOM NOW OPEN!




Find the perfect flooring for your home in our showroom plus expert design and installation advice. We have a huge range of quality carpets, Karndean Design Flooring, Polyflor, Harvey Maria and more. Free measuring and quotation service available.

11 London Road, Stockton Heath, WA4 6SG
01925 382890 | halecarpets.com

f t i p h houzz

EXCHANGE YOUR GOLD AND SILVER FOR INSTANT CASH



All items of jewellery accepted

Did you know...?
We accept silver jewellery, cutlery, tea sets, spoons, cigarette cases, candlesticks, trophies, trays, medals, coins and pocket watches.

**ROLEX WATCHES WANTED!
ANY CONDITION**

Open: Tuesday-Saturday: 10am - 5.30pm
1 London Road, Stockton Heath
(First floor entrance on Fairfield Road)
07544 486 621



**GOLD & SILVER
BULLION DEALER**

Domestic IT Support

- ▶ PC and Laptop Support
- ▶ Websites/Social Media
- ▶ Free Site Surveys/Audit Reports
- ▶ Cloud Backups/Data Recovery
- ▶ PC Anti-Virus/Malware Check

CALL
For Offers
Now



aspire
Computers Ltd

01925 251143
sales@aspire-computers.com
www.aspire-computers.com

WELCOME TO THE IDEAL BUILDING COMPANY




Our mission is to deliver a high standard of building work at competitive prices and give complete client satisfaction every time.

Our services include: Extensions & Conversions, Complete Refurbishments, Loft Conversions, Structural Works, Homes Offices, Kitchen & Bathroom fittings, Electrical, Heating and Plumbing works, Full Plan & Design Service and General Building work.

For a FREE consultation please call
01925 730888

Urban Building Projects Ltd.
410 Europa Boulevard, Gemini Business Park, Warrington, Cheshire, WA5 7TR
Email: info@urbanbuildingprojects.co.uk Web: www.urbanbuildingprojects.co.uk



ChipsAway

Scratches and scuffs won't dent your pocket

Quality, professional mobile car paintwork repairs at a fraction of traditional body shop costs.

- ✓ Bumper scuffs
- ✓ Paintwork scratches
- ✓ Minor dents



Call or email Mark now to arrange your free estimate

07445029415 / 0800 0287878 mark.chorlton@chipsaway.co.uk



www.chipsaway.co.uk

REPAIRS FULLY GUARANTEED

Advertiser's announcement

EMDR Psychotherapy for trauma and anxiety is now available in Lymm

If you haven't heard of EMDR Psychotherapy, you're probably not alone, but it has fast become a widely used and effective treatment, helping people deal with traumatic memories, anxiety, depression and stress.

EMDR, or Eye Movement Desensitisation and Reprocessing Psychotherapy is a one-to-one form of therapy that's non-invasive, doesn't rely on the use of drugs and is recognised by the NHS as a way of reducing the symptoms of PTSD.

Dr Art O'Malley is an expert in the field and Lymm Osteopathic Practice are delighted to welcome him to their team at the practice in Grammar School Road, Lymm. As a doctor, consultant child and adolescent psychiatrist and EMDR consultant, he sees patients with a wide variety of trauma and anxiety related issues including flashbacks, panic attacks, sleep disorders, phobias and addictions.

He has also devised treatment methods for posttraumatic growth to help develop mental toughness, emotional resilience and optimal functioning. These can be used in

business and sports environments or wherever anxiety can affect performance.

The therapy was first invented in 1987 by Dr Francine Shapiro, when she noticed that walking in a park generated rapid eye movements which lessened disturbing thoughts and emotions. Clinicians and researchers worldwide over the last 30 years have used this basic principle to develop ways of reprocessing and diminishing stressful memories so that they can be replaced with more positive beliefs. As an example, a rape victim may think that the attack was their fault. Reprocessing the Memory using EMDR Psychotherapy allows them to believe that they were not to blame for their attacker's actions.

As with all disciplines of this nature, it is important to ensure that the therapist is fully qualified and

competent to carry out the treatment. Art O'Malley has been accredited since 2008 and has presented widely in the field of trauma, neglect, attachment and personality disorders, emotional dysregulation in ADHD and is an expert in Autism Spectrum Disorders diagnosis and management. He also supervises therapists toward accreditation as both Practitioners and consultants in EMDR.

If you feel that EMDR Psychotherapy could benefit you, and want to know more, or, to arrange an appointment for an initial assessment with Dr O'Malley, call Lymm Osteopathic Practice on 01925 752264. They are always happy to work with you and find the health solution that's perfect for you.

These can be used in business and sports environments or wherever anxiety can affect performance.

Lymm Osteopathic Practice

Established 1979



SUZETTE PULMAN, N.D. M.R.N. D.O.
Registered Naturopath & Osteopath



DARREN HAYWARD, B.Sc. (Ost)
Registered Osteopath

We are both registered with The General Osteopathic Council (G.O.Sc.)

Open Monday to Saturday

Tel: 01925 752264

The Rise, 16 Grammar School Road, Lymm WA13 0BQ
(Easy Access Road Parking)

Registered with all major insurance companies

Home extension approved despite 17 objections

PLANS for extensions at a house in Langdale Avenue, Lymm have been approved by borough planning chiefs despite objection from 17 nearby residents and Lymm Parish Council.

Members of the borough council's development management committee deferred consideration of the scheme once and visited the site before reaching their decision.

The committee was told the scheme involved demolition of an existing rear conservatory and construction of a two-storey side extension and single storey extension at the rear, although originally it had been intended to include a two-storey extension at the rear also.

Objectors argued that the development would have an overbearing impact and result in loss of light and outlook and privacy for properties along Grasmere Road and Langdale Avenue.

They believed the site would be overdeveloped and out of keeping with neighbouring properties.

There were also concerns about parking as on-street parking was already an issue in the area.

The parish council believed the scheme represented overdevelopment of the site and that parking proposals were unclear, bearing in mind a shared access with neighbouring properties.

Planning officers said the design, scale and massing of the proposal would sit comfortably on the site and adequate amenity space would remain to the side and rear of the dwelling.

Matching materials were proposed throughout to the development which would not have an unacceptable impact on the property or the streetscene, nor on the character and appearance of the area.

SKIN-HUB

Nurse Led Aesthetics
Lymm Warrington

Anti-wrinkle injections

1 area £115...2 areas £155...3 areas £195

Dermal Fillers

From £100 (0.5ml)...£180 (1ml)

Chemical Peels

From £80 incl 5 day post peel home care pack

20% OFF

When you spend over £100

Call 07835 965929 or 01925 558769 for a free consultation

visit skin-hub-treatments.com for full price list

19B The Cross Courtyard, Lymm WA13 0HR



Commercial
Commercial Property
Litigation
Employment
Wills
Trusts
Probate
Personal Injury
Conveyancing
Crime
Family & Divorce

01925 231000

info@fdrlaw.co.uk

Warrington

Stockton Heath

Frodsham

www.fdrlaw.co.uk



Fast-growing hockey club gears up for new season

MEMBERS of fast-growing Lymm Hockey Club are preparing for the coming season – and reflecting on its incredible growth in just 13 years.

Since launching in the 2005-2006 season, the club has grown beyond its founders' wildest dreams.

They began with a single men's team with kit begged and borrowed from Lymm Rugby Club. There were just enough players to complete the team sheet.

Today the club boasts more than 120 male players and more than 200 females affiliated to England Hockey.

The age range is from the youngest, aged five, to experienced veterans of 50-plus.

This year has seen successes on and off the pitch, with a highlight a trip to Lee Valley Stadium – where the Olympic hockey was held in 2012 – to see the men's 1st team complete in the England Hockey National Tier 3 final.

Despite losing it was a truly memorable day out for more than 50 Lymm hockey families who travelled to the final with the support of Lymm Round Table.

The men's 1st team was also shortlisted for England Hockey Team of the year – a great acknowledgement for a relatively small, young, northern club.

Another accolade for the club this year was the achievement of one of its coaches, Chris Hunt, in winning the Cheshire Hockey Association "Lifetime Achievement" award.

Former player Chris has invested many, many hours in coaching juniors and umpiring matches.

But the club stresses it's not all about winning.

A number of "fun" games and inter-club tournaments for juniors and seniors are held throughout the year.

One such event is the annual ChivFest when the club remembers sadly-missed women's 1st team player Susie Chiverton, who was always first to volunteer and loved to join in.

ChivFest has become an event to look forward to in the club calendar involving juniors, seniors, men and women of all ages and experience for a fun day of semi-competitive hockey.

This year also saw the Men's 3rd team challenge the Women's 3rd team in a very competitive game which, despite the result, ended with an enjoyable barbecue afterwards.

Lymm Hockey Club stresses it is very much a family club – and that it is still looking for more members.

All ages and abilities are welcome and the club organises "back to hockey" sessions for those who haven't played for some years or, indeed, may never have played.

Anyone interested in joining should email lymmhockey@gmail.com or visit the club website www.lymmhockey.com



Toddle waddle has double cause to celebrate



It was a double celebration when youngsters from Statham Little Foxes pre-school at Lymm set off on their annual toddle-waddle.

The youngsters set off from their pre-school nextdoor to Statham School on their way to the canalside gardens of Leckonby Cottage on Whitbarrow Rd. For the children it was probably their first

taste of a "sponsored effort" while for hosts Su and Alan Williams it marked the tenth anniversary of the popular event.

Having walked almost a mile of the Trans-Pennine trail in convoy along with parents, teachers and carers, the children were able to enjoy a picnic on the lawn and the chance to explore before receiving their individual "toddle-waddler" medals.

"Over the years we have had all sorts of weather conditions to contend with but this year was absolutely perfect" said Su Williams. "We love being able to share our garden with the children for a such a good cause."

The walk also raised close on £200 to help fund an outdoor music area for the pre-school.

"The toddle-waddle is always one of the highlight events of the summer term and the fact that it also raises money is an added bonus" added Nichola Kelly of Little Foxes.

Established 1878
John Burrows & Sons
 Fourth Generation Independent Family
Funeral Directors
 Friendly & Professional Service
 Day or Night ~ J. Tandy
 The Old Smithy, Mill Lane, Lymm,
 WA13 9SE Tel: (01925) 752501
 Golden Charter
 Funeral Plans
www.johnburrowsandsons.co.uk

twentyfour seven
 design & print ltd

FROM £15

GET ANY CUSTOM IMAGE PRINTED ONTO...

ACRYLIC GLASS DIBOND

We can also print onto a wide selection of other materials.

QUALITY PRINTERS • EXCELLENT SERVICE • QUICK TURNAROUND

For all enquiries please contact us on:
01925 240 247

info@247print.net www.247print.net

CLASSIFIED

FREEPHONE 0800 955 5247 to advertise

ACCOUNTANCY & BOOKKEEPING

BOOKKEEPER/ACCOUNTANT. Licensed for maintaining financial records, VAT Returns, Payroll Service, Management Accounts, SAGE Software Consultancy. **Contact: 07815 617914.** (01/18)

EQUESTRIAN SUPPLIES & ANIMAL FEEDS

STABLES SADDLERY. Est 1964. Good stock of all equestrian supplies and animal feeds. Also storage available for trailers, caravans and household goods etc. **Tel: Barbara Williams on Lymm 752762.** (012/18)

OPTICIANS

ADCOTT OPTICIANS. State of the Art opticians in the heart of Lymm Village. Comprehensive sight tests and a wide choice of spectacles tailored to you, whatever your budget. **01925 757075** (011/18)

TUITION

JustEnglish
SPECIALIST ENGLISH TUITION

One-to-One Tuition
Experienced Teacher,
Examiner and Moderator
100% Pass at GCSE 2017

Call Wendy 07863 888 599
www.justenglishlymm.co.uk (02/19)

CARPETS, CURTAINS & INTERIORS

Paul Bains Flooring Solutions Ltd



- CARPETS - WOOD - LAMINATES -
- DECORATIVE VINYL FLOORING -
- FREE CHOOSE AT HOME SERVICE -

101 Bucklow Gardens, Lymm WA13 9RN
T: 01925 748549 M: 07973 376224
E: paulbainsflooring@msn.com
www.paulbainsflooringsolutions.co.uk (06/19)

GARDENING SERVICES

Beechwood Industries Ltd
Landscape Management Solutions

LOCALLY BASED

- Garden Maintenance
- Lawn Care
- Landscape Design
- Construction
- Paving
- Tree Surgery
- Free Assessment
- Free Consultation

Contact us on:
07749 253 308
01925 860544
www.beechwoodindustries.co.uk (01/18)

PAINTING & DECORATING

BENJAMINS PAINTERS AND DECORATORS. 20 years professional experience in commercial and domestic decorating, wallpapering, coving, interior and exterior work. **Telephone 07837 452514 or 01925 755198.** (012/18)

PAYROLL

WHY TRY TO BE A PAYE EXPERT? Watkinson Black can provide a cost effective payroll service, releasing you to concentrate on your business. **For further details please phone: 01925 413210 or e-mail: info@warringtonaccountants.co.uk** (01/18)

WINDOWS & GLAZING

LYMM WINDOWS & CONSERVATORIES LTD, BY NEIL COPELAND. Specialist in uPVC double glazing windows, doors, porches, conservatories, also fascias and guttering. FENSA registered. All work guaranteed. **Tel: 01925 756138 / 07961 361550.** (02/19)

MOTORING SERVICES

PARKVIEW CAR SALES

We buy and sell
QUALITY CARS
Best price paid

Telephone Peter on
01925 575737 /
07957 545479

23 Padgate Lane
Padgate, Warrington
Cheshire, WA1 3RS (01/18)

CARPET CLEANING

A1 STAINBUSTERS. A Warrington company cleaning carpets, hard floors, Upholstery (Leather + fabric) and curtains in situ. FREE quotes for domestic and commercial. Approved carpet cleaners for Hancock and Woods for over 10 years. **Call John on 01925 852088 or 07765 314080** (010/18)

J C SLAVIN
Landscapes & Garden Maintenance

Landscape Design • Garden Landscaping
• Plant Hire • Flagging • Fencing • Tree Hedge Pruning

01925 756 839 / 0161 775 0297
Mob: 07737 655 211
www.jcslavin.co.uk (07/18)

PLUMBING

CL PLUMBING AND GAS SERVICES
Local honest plumber covering all aspects of plumbing and gas works. Boilers and central heating installed and repaired. Bathroom suites supplied and fitted. Cookers and fires fitted. Landlord gas safety checks. All plumbing emergencies - 24 hour call out. No job too small, OAP Discount rates. **Tel Craig 01925 819692 07851 405466 www.warringtonplumbingservices.co.uk** (02/19)

Gas Safe Registered Engineer

Andy Gas of Lymm, specialist in: Boiler upgrades, servicing, repairs to all domestic heating and gas appliances. For a professional service call Andy **07753 838129 or 01925 753712** (02/19)

HANDYMAN

Handyman Services
Home, Office & Garden

Internal and External Painting • UPVC Window and Door Repair and Replacement
Mechanism/Lock Changes • Soffits and Fascias
Gutter Cleaning, Repair and Replacement
Flagging • Fencing • Patios • Jet Washing
All Garden Work • All DIY

Call today for a FREE quote

Tel Neil: 01925 757905 (Lymm Based)
Mob: 07813 201850
handymanserviceslymm@hotmail.co.uk (010/18)

CLEANING SERVICES

arleys angels

- Spring Clean Specialists
- Presenting your home for sale
- Moving house
- After building work cleans

01925 266834
... because you're worth it! (01/18)

SIMPLY THE BEST CARPET CLEAN YOU will ever have. Cleaners UK Ltd. Est 28 yrs. Have your carpets & sofas beautifully deep cleaned leaving them fresh smelling & colour restored. Latest & best methods. Dry/steam. Leather cleaning, oriental rug specialist. Professional, reliable & affordable. **For more info call Neil Riley on 01925 264989/ 07831 336060 www.cleaners-uk.net** (01/19)

HOME SERVICES

ATLAS
Your friendly local independent pest controllers

SUMMER SPECIALS:

WASP CONTROL **£39** INVASIVE BEE CONTROL **£55**

Affordable, professional, guaranteed service. Fully insured, fixed prices - no surprises once on site! Discrete vehicles, no embarrassing signs
07999 487 925 / 01925 445 222
www.atlas4u.co.uk (06/19)

RE-UPHOLSTERY

Orchard Soft Furnishings

RE-UPHOLSTERY
CURTAINS • BLINDS

FREE MEASURING & FITTING

TEL: (01925) 756388
www.orchardsoftfurnishings.co.uk (01/18)

ELECTRICAL CONTRACTOR

TRUST PROPERTY ELECTRICAL SERVICES. NICEIC Part P Approved Contractor. All Electrical work undertaken. Inspection & Testing & PAT Testing. All work certified & guaranteed. **Call Tim on 07754409906 or 01925 601055** (05/18)

MORTGAGES

INDEPENDENT MORTGAGE ADVICE. For local, impartial and professional advice on all aspects of mortgages contact Darren Simpson at Amathus Financial Services on **07708 975122 or 01925 399999** (05/12/18)

TAXI / PRIVATE HIRE

Horn's

Airport Transfer & Taxi Specialists
CALL MARTYN: 01925 751761
MOBILE: 07881 786250 (05/18)

Orbit News Ltd
Celebrating
50 YEARS

Publishers of:

- Lymm Life
- Warrington-Worldwide
- Village Life
- Culcheth Life
- Frodsham Life
- Lifestyle

Banner & Co

Independent Residential Sales and Letting Agent



EXPERIENCE

A BETTER WAY TO MOVE THIS SUMMER FOR LESS. INSTRUCT US IN JULY OR AUGUST FOR

**NO UPFRONT FEES,
10% DISCOUNT,
NO SALE NO FEE**



01925 753636 www.bannerandco.co.uk

Please note that if you have already instructed another agent, we would advise you to check any agreement you may have to ensure you are not liable for more than one commission by instructing us as your agent

