

Lymm Life

FREE EVERY MONTH

July 2018
Issue: 232

U
urban
BUILDING PROJECTS LTD
Extension &
Building Renovation
Specialists
Tel: 01925 730888
www.urbanbuildingprojects.co.uk

Hale
CARPETS & FLOORING

See our main advert
on page 16

01925 756275
www.halecarpets.com

Banner & Co
Independent Residential Sales
and Letting Agent

See our main advert
on the back page
for details

01925 753636

idfm
THE COMPLETE BUILDING SOLUTION
EXTENSIONS
DESIGN & BUILD
NEW BUILD
01925 598120
WWW.IDFM.SOLUTIONS

eden
RESIN BOUND SPECIALIST

www.eden-resin.co.uk
01925 263125



**LYMM
PARISH
COUNCIL**

Approved by Lymm Parish
Council as the official
magazine for Lymm

**School fayre
boosts funds**

Page 14

Picture: Paul Jackson

Regular news updates at www.lymmmlife.co.uk

Editor
Gary Skentelbery

Production
Paul Walker

Advertising
James Balme
Freephone
0800 955 5247

Editorial
01925 623633

Email
info@lymmmlife.co.uk

Websites
www.lymmmlife.co.uk
www.culchethlife.com
www.frodshamlife.co.uk
www.warrington-
worldwide.co.uk
www.warrington.tv

Address
New Media Centre
Old Road Warrington
WA4 1AT

*Lymm Life is published
monthly by Orbit News Ltd.*

*The contents of this magazine
are fully protected by copyright
and nothing may be reprinted
or reproduced without prior
permission of the publishers.*

*The publishers are not liable for
any statement made or opinion
expressed by third parties in this
publication.*

Printed by TwentyFourSeven

Editor's Comment



LYMM has certainly been a hive of activity recently, what with the highly successful Lymm May Queen Festival, which was due to be followed by the Lymm Festival as I penned these notes.

It was good to see that moving Lymm May Queen to May proved successful and the weather was certainly a big improvement on recent years.

Meanwhile there is so much going on it is hard to keep pace.

I recently attended two events in the giant marquee which has now become a regular feature at Lymm Rugby Club.

The first was the annual Sportsman's Dinner which raises funds for the ongoing grassroots appeal, followed by the bi-annual Warrington Business Awards.

Both were superb events with excellent catering, considering both events had in excess of 450 guests.

While the rugby club event

was packed with Lymm people, I was not aware of many Lymm businesses being represented at the Business Awards event, although having said that there were people in the marquee who I have known for three decades who I didn't manage to see, so they could have been missed.

But I am sure there are plenty of great businesses in the village who are not aware of these awards which are going from strength to strength.

In fact it is a shame it isn't an annual event although I am sure two years will be round again before I know it.

Hopefully in 2020 we can see some Lymm based businesses at the

event and even being nominated for one of the 12 great awards which were handed out on the evening, including a much deserved Lifetime Achievement Award to Warrington Disability Partnership founder and CEO Dave Thompson, a long time friend and inspiration.

It was good to see the award being made by former recipient Norman Banner - a Lymm resident!

**Deadline for the
August issue of
Lymm Life is
July 3**

N & J STANHOPE

Coal and Log Supplies

Best Quality Coal

Smokeless Fuel

Logs Supplied in Bags and Bulk

Fresh Bacon and Eggs

Open 6 Days. Closed Sunday

Broomeedge Farm

Burford Lane, Lymm WA13 0SE

Tel: 752830

Mobile: 07979 785 421



Professional Ear Wax Removal

**Specialists in all aspects
of Ear Care
Hearing Aids - Hearing Tests**

Please call to find out more
Tel: 01925 730123

www.cheshirenaturalhealth.co.uk
Cheshire Natural Health, Beehive House, Tarporley Road, Stretton, Warrington

INDULGE YOURSELF

- WORKOUT & RELAX -

Get Ready for Summer with our 6 week membership.

FOR ONLY £75.00









In 2 weeks you will feel it, in 4 weeks you will see it, in 6 weeks you will hear it.
Make a start on the journey to a healthier you in just 6 weeks and join today.
Contact us now on **01925 73 00 00** or email us **leisuresales@theParkRoyal.co.uk**

Ts + Cs apply. Subject to availability. Offer valid until 31st August 2018. Bootcamp sessions are excluded from this offer and will incur an additional charge.
For full terms and conditions, please speak to the health club team.



THE PARK ROYAL
www.theParkRoyal.co.uk

Ancient Lymm Rushbearing Festival set to be revived

THE ancient tradition of Lymm Rushbearing is set to be revived after an absence of two years.

But the event will not involve a procession on local highways which brought an end to the tradition two years ago because of the cost of road closures.

The event, being organised by Chris Limb, is set to take place on Sunday, August 12, gathering at the Lower Dam at 4pm.

Chris, who helped keep the tradition alive before the costly road closures came into force, said: "We are back in business this year but not processing on the roads and therefore no need for road closures or accompanying expense."

"We will gather near the Lower Dam about 4 pm and then process up the Dingle. People will then meet up again on the grassy area

below St Mary's car park. We will as usual have Morris dancers and Rushbearing garlands. We will then have a service at St Mary's at about 4.30."

Lymm Rushbearing was re-born in the early 1970's (having probably died out in the early years of the century, possibly during the First World War) and has been held on the second Sunday in August, although it has over the years been held on other days. For many years in the twentieth century Rushbearing Monday was a local bank holiday.

Ormerod's late Victorian history of Cheshire refers to the festival taking place in many communities on or near to the feast

of the parish's patron saint – hence Lymm's tradition of having the festival during the summer holiday period and close to the feast of the Assumption of Saint Mary.

Although the carrying of fresh rushes to church (normally on a horse-drawn cart) was a central

feature, and the replacement of the old rushes upon the earthen church floor a very practical necessity in former days, this gathering of locals also involved festivities including not only the procession and Morris dancing but also sports, fairground stalls, and very full public houses!



Sophies Soft Furnishings

Curtains • Roman Blinds
Cushions • Tiebacks • Poles
Tracks • Valances • Pelmetts
We design, make and fit to meet your exact requirements.
For free home visit or advice ring
Anne on 01925 754446
www.sophiessofffurnishings.co.uk

We Clean Ovens

...so you don't have to!

Call us today to have your cooking appliances sparkling, using our own eco friendly products.

Our oven cleaning experts will leave you free to enjoy your valuable leisure time.



oven
oven valeting service

Call TODAY for **01925 453377** Local | National | Affordable
LOCAL Service ovenwarrington.net

Rosebank & Naturegarten

SOME FUNDED 15 AND 30 HR PLACES AVAILABLE FOR SEPTEMBER



We have great spaces and places for babies and children at Rosebank and Naturegarten.

Part time, full time sessions available for term time and all-year round

Children and staff are really liking the new pre-school rooms and bug-hunting in their own separate garden.

THE ROSEBANK CENTRE & ROSEBANK NATUREGARTEN, PEPPER ST
WWW.RNGROUP.CO.UK 01925 320161

f @rosebankandlakescentres

QUALITY
KITCHEN
FACELIFTS

Transform your
kitchen this Spring

Read our reviews on
Checkatrade.com

Est.
1999



why replace when
you can reface?

- Installed by local skilled tradesman
- Door swaps to full kitchen tailored to your needs
- Senior citizens discount

DREAM DOORS
NEW LIFE FOR OLD KITCHENS

Checkatrade.com f t g+ y

Call Lynn for a Free Quotation:

01925 211 308

www.dreamdoors.co.uk

wa@dreamdoors.co.uk
www.dreamdoors.co.uk
Dream Doors Northwest, 92 Knutsford Road, Grappenhall, Warrington, WA4 2PJ

What's On in conjunction with Lymm Parish Council



July 10
LYMM PARISH COUNCIL
Lymm Parish Hall 7.30pm

June 21 - July 1
LYMM FESTIVAL
www.lymmfestival.org.uk

LYMM THURSDAY EVENING BRIDGE CLUB

Lymm Village Hall every Thursday 7pm

MAPLE LODGE ART GROUP

Meet each Wednesday 9.30am - 12.30pm
Oughtrington Community Centre, Lymm
Details: 01925 755126

ROTARY CLUB OF LYMM

Every Wednesday at Statham Lodge Hotel
7.15pm for 7.30pm
Contact the secretary 01925 650189

LOVING HEARTS & HANDS

Knitting for charity at Lymm Methodist Church,
2nd and 4th Thursday each month.
1.30pm - 3pm. Details: 01925 753298

MARKET LUNCHES

Eagle Brow Methodist Church
3rd Thursday in the month
Light lunches 12 noon till 2pm. All proceeds to
Youth For Christ and YMCA Room at The Inn

LYMM SCOTTISH COUNTRY DANCE CLUB

St Mary's Church Hall
Second and fourth Fridays (Sept - May)
7.30pm. Details: 753853

GARDENING CLUB

Meet Third Wednesday of the month
Lymm Baptist Church, Higher Lane. 7.30pm
Visitors welcome. £2 includes tea and cake

LYMM FLORAL ART GROUP

Lymm Village Hall
Third Monday of the month (except August)
at 7.30pm)

LYMM PHOTOGRAPHIC SOCIETY

Every 2nd and 4th Wednesday
(ex July & Aug), 7.30pm
Spread Eagle pub, Eagle Brow.
Details: www.lymmphotosoc.org.uk

LYMM WINE AND BEER CIRCLE

3rd Wednesday of the month, 8pm
The Spread Eagle Hotel
Details: 01925 604400

LYMM CONCERT BAND

Rehearsals every Thursday evening
United Reformed Church, 8pm.
Details: 01925 752934

LYMM WI

Every second Wednesday, 2-4pm at Lymm
Youth and Community Centre. Visitors
welcome.

LYMM BOOK CLUB

Second Thursday of the month 7.30pm,
Spread Eagle, Eagle Brow. Details 01925
752371

LOW CARBON LYMM

Every second Monday of the month. 7.30pm,
Spread Eagle. 07786 074741 all welcome

4LYMM VOLUNTARY ORGANISATION

Meet every 2nd Monday at 7.30pm in the
Bridgewater Club, Whitbarrow Road.
All welcome. Tel 01925 756378 for details.

LYMM AND DISTRICT MIXED VOICE CHOIR

Every Wednesday 7.30 Lymm Methodist
Church. Contact 01925 601664.
cath@stones.co.uk



**LYMM
PARISH
COUNCIL**

Next meeting July 10
Lymm Parish Hall 7.30pm

New exhibition set to open at Lymm Heritage Centre

LYMM Heritage Centre is unveiling its third exhibition since opening on Thursday June 21 at 4pm, to coincide with Lymm Festival and just in time for Lymm Historic Transport Day on June 24.

The exhibition is titled "Lymm- A place of running water "... telling the stories of Lymm's two canals.

"Yes I know it's not strictly running water in a canal," smiled the centre's chair Alan Williams. "But it is the most likely meaning of the word Lymm, and it does reflect just how important water has been to the growth of the village.

"We aim to expand on the theme over time to include the slitting mill, the lower dam and corn mill among other things but for the time being we are concentrating on these two important waterways, each historic and unique in its own way."

The Bridgewater Canal



exhibition will feature a 30 square foot map of Lymm as it looked in 1872 with hidden stories of canal life to explore.

There will also be a collection of boat models with particular historic connections to Lymm along with their stories. These have been generously loaned by The National Waterways Museum.

The Ship Canal exhibit will focus on how the huge engineering project touched the lives of people in Lymm and those who came to Lymm, including the navvies.

The centre has also teamed up with the Daniel Adamson Society to give a flavour of what it was like to work on the completed canal as well as telling the story of the remarkable restoration of "The Danny" itself.

The Centre is open 1pm till 5pm Thursday to Sunday - See website for extra opening hours during Lymm Festival. www.lymmhlc.co.uk

More volunteers are always welcome for a wide range of opportunities from education to archiving and retail to admin. Contact via website above.

simplesolutions
Financial Management Ltd
INVESTMENTS & PENSIONS

INVESTMENTS

Our investment expertise will ensure that you have the most suitable investment to help you achieve your financial goals.

We use:

• Asset Allocation • Risk Profiling • Diversification • Correlation

PENSIONS

Pensions have changed since the March 2014 budget and you now have a lot more options to consider

TECHNOLOGY

Simple Solutions uses the latest technology to keep you updated, even when you are on the move or abroad, check out our website for more details.



The Base, Dallam Lane,
Warrington, Cheshire
WA2 7NG

Tel: 01925 266628 Fax: 01925 267043

www.simplesolutions.financial @SimpSolsFA

Simple Solutions Financial Management Ltd is authorised & regulated by the FCA. The registered office is 1st Floor, 67 London Road Stockton Heath, Warrington WA4 6SG. Registered in England & Wales. The company Re No 6920858.



Thelwall Upholstery

FOR THE MOST COMPETITIVE RATES IN THE AREA

49 Knutsford Road, Grappenhall WA4 2NR

Call Sean on: 01925 604770 or mobile: 07799 228080

www.upholsterywarrington.co.uk

For all your upholstery needs

SPECIALISTS IN:

- Re-filling Cushions • Re-springing • Full Re-upholster
- Dining Furniture • Headboards

A wide range of sample books to choose from
All at competitive rates

PHONE FOR YOUR FREE ESTIMATES



Meet your MP Faisal Rashid

Faisal holds regular surgeries to discuss any issues that you may need help with. Private surgeries take place every Friday. Simply call the office on 01925 657600 to book an appointment, you can also send an email to faisal.rashid.mp@parliament.uk

Stay up to date with all current news, policies, and events at www.faisalarashid.com and keep an eye out for regular roving surgeries coming soon to a doorstep near you!

Follow Faisal on [@faisalarashid6](https://twitter.com/faisalarashid6) and facebook.com/FaisalRashidMP where you can find out about current issues, street surgeries and more.



"Working hard for all communities"
Warrington South

Appleton | Bewsey & Whitecross | Chapel Fold & Old Hall | Grappenhall | Great Sankey North & Whittle Hall | Great Sankey South | Latchford East | Latchford West | Lymm North & Thelwall | Lymm South | Penketh & Cuddley | Stockton Heath

LEADERS IN FAMILY LAW.

Delivering the results when it matters

Specialising in:

Divorce & Separation
Financial Settlements
Child Related Matters



Stockton Heath 01925 912 277

Hale 0161 926 1430

Manchester 0161 834 2623

caroline.swain@bpsfamilylaw.co.uk

www.bpsFamilyLaw.co.uk



Less is More!

- Get paid quicker – Improving your cash flow
- Less time spent sorting old receipts – Free up countless hours each week.
- Less jargon and more proactive advice – Watch your business flourish.

Don't let these issues hold your business back.

To find out how we can remove your financial headaches call us:

01925 761600

or visit us at:

www.stylesandco.co.uk

styles and co.
chartered accountants

xero

SILVER PARTNER

Antonia has 'the big chop' to raise £600 for charity

MOTHER-of-three Antonia Mungai decided her hair had been too long...too long.

The answer, she decided, was "the big chop."

She knew about hair donations so she got in touch with the Little Princess Trust, a charity who provide free, real hair wigs to children and young adults going through cancer

treatment.

"It would mean I'd have to cut off more hair than I'd planned to. But I have lots of hair and it will grow back!

"My auntie is currently going through chemo and has lost all her

hair so that put things in perspective too."

Antonia contacted Lymm hair and beauty salon Red and hairdresser Jenny did the rest. Her long hair soon got much, much shorter.

"An average wig costs the charity £500 and I have so far raised £600. But I would welcome further donations towards this amazing charity."

Antonia has three children, aged three, five and 13, owns locally based Cheshire Soap Company and still finds time to work in the Sanctuary Café – Lymm's community café.

Anyone who wants to help her raise more money for the Little Princess Trust can do so at www.justgiving.com/fundraising/thebigchoplymm



KEATE HOUSE CARE HOME

Quality person-centred care for your elderly loved one

Keate House is an independent family-run Care Home, specialising in providing Residential, Dementia, Respite and Day Care services for the elderly. Situated in the beautiful village of Lymm, our lovely purpose designed home is supported by our compassionate team, dedicated to providing only the best in quality person-centred care in our happy, stimulating and homely environment.

- Residential Care
- Respite Care
- Dementia Care
- Day Care

To talk to one of our Care Managers or to arrange a visit,

Call: 01925 752091 Email: info@keatehouse.com

Brookfield Road, Lymm, Cheshire WA13 0QL

www.keatehouse.com

Enriching life with quality care





BESPOKE BUILDS

— OF CHESHIRE —

Ethos;

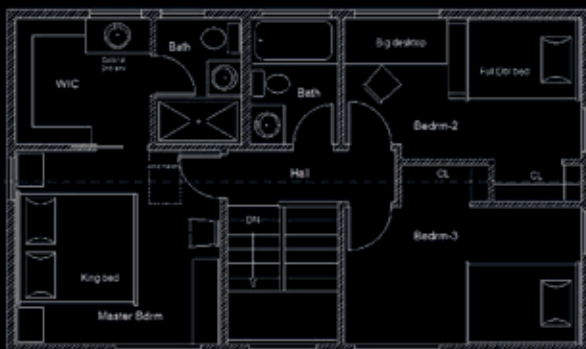
Newly incorporated in 2018, Bespoke Builds of Cheshire Ltd founders have been a part of the construction industry for a combined 50 years. We have a keen eye for detail and will commit to provide a stress free experience for your building project.

Far too often customers are let down and are supplied a poor quality of work for quite often large sums of your hard-earned money, thus giving the building trade a bad name. Our business model is to provide high quality workmanship for a fair price.

We can offer a full 'Turn key' service, down to the decoration of your newly finished building project with contacts for the most prestigious of tastes, we truly can offer it all.

Our commitment to the customer is providing high quality work using the industries best materials which will better exceed the expectations of the customer.

Contact us now for a free no obligation quote for your bespoke build



01925 933 080



07957 994 711



info@bboc.co.uk

Home Builds • Home Extensions • Orangeries • Property Refurbs

— WWW.BBOC.CO.UK —

Twin-Town trip celebrated 50 years of partnership

AROUND 70 people from Lymm visited its twin-town in France to celebrate 50 years of partnership.

During the visit, a plaque commemorating the event was unveiled in "Square de Lymm" and an art exhibition was held which included the work of 16 Lymm artists.

Meung-sur-Loire is near Orleans in France and visits take place between the two towns every year.

The arrangement was originally started by the former Lymm Urban District Council and its equivalent in Meung.

In the early days the former Lymm Grammar School was also heavily

involved.

At a reception, Peter Birchall, chairman of the Lymm Twin Town Society, thanked his opposite number for an excellent and unforgettable visit with good weather.

He said: "As a souvenir I would like to present you with a model of Lymm Cross to remind you of the centre of our village. I hope it will go on show to encourage others to come to Lymm in future years."

One of the highlights of this year's visit was a trip to Paris, including a boat trip on the Seine. This was especially enjoyed by the numerous children who were present on the exchange and by two families joining the party for the first time."

Last year's chairman of Lymm Parish Council, Cllr John Bamforth, presented a painting of Lymm to the Mayor of Meung.

He said: "A new feature of this year's visit was an art exhibition at a gallery in Meung organised by Will Swindlehurst who took the paintings over in his caravan. The work of 16 Lymm artists was on show to help celebrate 50 years of twinning."

Anyone wanting to find out more about the Twin Town partnership and how to join should visit www.lymmtowntownsociety.co.uk and then talk to a member of the committee if interested in joining.

The society is open to anyone who lives in the Lymm area – and there is no requirement to speak French.



Past Chairman and Founder member of Lymm Twin Town Society, Chris Limb with the plaque



Visitors from Lymm on the boat at the base of the Eiffel Tower



John Bamforth, Peter Birchall, Pauline Martin (Mayor of Meung) and Michel Bret (President Meung Twin Town Society) at the unveiling of a plaque in the 'Square de Lymm'

A day to remember at Arley Garden Festival

THREE leading figures in Cheshire horticulture will share their knowledge and anecdotes at this year's Arley Garden Festival on June 23-24.

Lord Ashbrook, whose family have nurtured Arley's gardens for 250 years, will be one of those taking centre stage in the popular Gardeners' Question Time marquee.

He will talk about the Arley

gardens' history from the 18th century through to the current day and answer any questions from the public.

Joining Lord Ashbrook will be Arley's Head Gardener Gordon Baillie who has worked in high-profile gardens across the country – including once being gardener to the musician Sting.

Former BBC Gardener of the Year Sue Beesley, owner-manager

of Bluebell Cottage Gardens and Nursery in Dutton, completes the trio of experts.

"We feel very honoured to have such knowledgeable speakers and are sure our visitors will be delighted to hear from all three," said Event Organiser Helen Begent.

"All of them are offering their time on both days of the show to give the public every opportunity to ask questions or simply listen to

the horticultural stories they have to tell."

It is the 24th year for the Arley Garden Festival, which is firmly part of the calendar for Cheshire's gardeners.

Enthusiasts

Every year around 5,000 enthusiasts – as well as those just looking for a family day out – visit the event.

Among the highlights will be the specialist plant nurseries, floral marquee, food fair and craft stalls. There will also be live music, a classic car display and children's entertainment.

Pupils from local schools have also been busy creating their own show gardens, which will be honoured by judges and the public.

"Increasingly, gardening is being recognised as an important element in education and we are delighted at the enthusiasm shown by the children and their teachers," said Lord Ashbrook.

The show is open 10am to 5pm. Tickets can be booked at a discounted rate at www.arleyhallandgardens.com or bought on the gate for £16.50 and include entry to Arley's award-winning gardens and the hall – home to Thomas Shelby in the BBC's BAFTA-winning drama *Peaky Blinders*.





THE GARDEN FESTIVAL

Saturday 23rd & Sunday 24th June 2018 10am - 5pm

There's something for everyone to enjoy included in your ticket:

- ◆ Spectacular Floral Displays ◆ Gardener's Question Time
- ◆ Specialist Nurseries ◆ Garden Accessories ◆ Guided Tours of the Gardens
- ◆ Hall and Gardens entry ◆ Schools Garden Challenge
- ◆ Countryside Activities Marquee ◆ Food Fair ◆ Creative Crafts Marquee
- ◆ Arley Bakes with Leeds City College & ISS
- ◆ Children's Entertainment ◆ Dogs welcome on a lead

BOOK ONLINE: www.arleyhallandgardens.com/events/2018-06

(Tickets cannot be replaced or exchanged if lost. No refunds available)

Northwich, Cheshire CW9 6NA

Tel: 01565 777 353 www.arleyhallandgardens.com

[f /arleyhall](https://www.facebook.com/arleyhall) [@arleyhall](https://www.instagram.com/arleyhall) [in arleyhallandgardens](https://www.linkedin.com/company/arleyhallandgardens)



Only the best is good enough!



Youngs Roofing Contractors Ltd pride ourselves on our PROFESSIONAL, RELIABLE, AFFORDABLE & FRIENDLY service. We provide a complete expert range of professional roofing & scaffolding services throughout the NorthWest, using time served tradesmen.

We undertake installation & repair work on all domestic and commercial property types. From slate & tiled roofs to flat roofing structures, our team has the experience, the knowledge and the ability to undertake all of your requirements. All Youngs work comes with an exclusive 10 year workmanship guarantee, giving you confidence that you're well 'covered'.

Youngs Roofing Contractors Ltd have been established for over 10 years, with over 20 years experience

- All aspects of roofing & scaffolding covered.
- Experts in both GRP & EPDM flat roofs, with 20 year guarantees.
- From full scale roofs to repair work.
- FREE no obligation quotations.
- All works guaranteed.
- NO JOB TOO BIG OR TOO SMALL



If you need a skilled roofer in Warrington or surrounding areas of the NorthWest please contact us

T: 01925 568163 / 07878 741467

E: info@youngs-roofing-contractors.co.uk

www.youngsroofing-warrington.co.uk

WILLIAM H. LILL & CO.
part of **mlp law**

Providing support & advice
whatever your needs

MLP Law provides a full range of legal
services to private and commercial clients

We understand that our clients are individuals, business owners and corporates, which is why we provide support and advice whatever your needs. For us, it's about building relationships and providing a service to guide our clients along their business and personal journey.

Our Services

- Wills, Trusts & Probate
- Employment & HR
- Dispute Resolution
- Corporate & Commercial
- Property, Real Estate & Landlord/Tenant
- Residential Property & Home Moving



01925 753 170

www.mlplaw.co.uk

hello@mlplaw.co.uk

William H. Lill & Co.
part of **mlp law**



9 The Cross, Lymm, Cheshire, WA13 0HY

LawNet



LEGAL
500

Lexcel
Legal Practice Quality Award
Law Society Accredited

All set for Lymm Festival

It's not long now until the start of the 20th Lymm Festival and two more acts have just been announced for the Family Garden Party on June 30.

In addition to Mr Bloom, children's comedian Lucia Davies will be providing hilarious improvised fun for children of all ages and there will be an amazing journey to the magical Wonderslide World.

On June 28, there will be comedy and magic for the whole family in the form of Morgan & West: Time Travelling Magicians who will perform hilarious conjuring acts which will leave you mystified, but thoroughly entertained.

There will also be uplifting music from local voices as the Lymm Big

Sing Choir performs with pop duo Switch on June 26.

This year's varied festival programme also includes Tim Brooke-Taylor, LymmFest (4 bands, 4 venues, 1 wristband), John Suchet discussing Mozart and Strauss, the Enigma Machine Story and a panel of crime authors discussing the enduring appeal of crime fiction. Tickets are on sale now at lymmfestival.org.uk or Lymm Electric. The box office will be open daily from June 16 in the Village Hall Annexe.



Morgan and West: Time Travelling Magicians

Lymm Osteopathic Practice

— Established 1979 —



SUZETTE PULMAN, N.D. M.R.N. D.O.

Registered Naturopath & Osteopath



DARREN HAYWARD, B.Sc. (Ost)

Registered Osteopath

We are both registered with The General Osteopathic Council (G.O.Sc.)

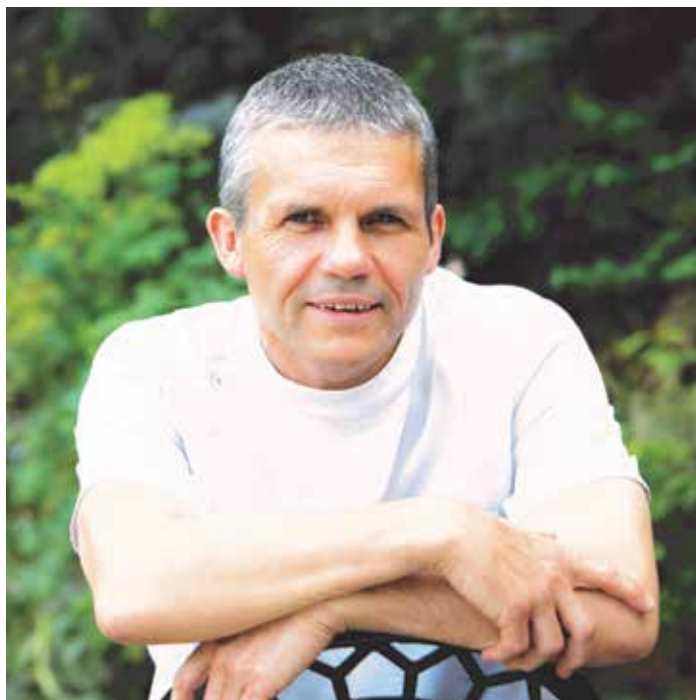
Open Monday to Saturday

Tel: 01925 752264

The Rise, 16 Grammar School Road, Lymm WA13 0BQ
(Easy Access Road Parking)

Registered with all major insurance companies

Going to great pains to find the right Osteopathic treatment for you



When it comes to pain, it's not always easy to find the right treatment – or the right practitioner to help you deal with it.

At Lymm Osteopathic Practice, you'll find an entire team of experts, from Osteopaths to Counsellors, each offering a unique service yet working together with each other to help you.

Everyone is different. Some people look for a specific discipline, or a specialist in their particular ailment. Some prefer a female practitioner, others a male.

Lymm Practice will endeavour to find the right therapy...and right person, for your individual needs.

Pain and musculoskeletal conditions often benefit from Osteopathy. This usually employs physical techniques such as manipulation, stretching and massage to help the body's own healing mechanism - resulting in the relief of pain and an increase in mobility and function.

Darren Hayward has been an Osteopath at the practice for over 20 years. Qualifying in 1994, he has had a great deal of experience dealing with all types of condition.

Whilst many of his patients come to him with lower back and neck pain, he enjoys all aspects of general osteopathic practice. One of his areas of special interest is the management of M.E./Chronic Fatigue Syndrome, a much misunderstood and debilitating condition.

He is also interested in the treatment of sports injuries and exercise related pain. A keen sportsman himself, he participates in running and judo, which have given him an understanding of the demands that certain activities can have on the body.

For more information, an appointment with, or simply advice from Darren Hayward, or any other practitioner, you can call Lymm Osteopathic Practice on 01925 752264. Or, alternatively, take a look at the website on www.lymmosteopathicpractice.co.uk. All practitioners have completed a high standard of professional training and are appropriately registered. They are always happy to help find the health solution that's perfect for you and your requirements.



20 YEARS 21 JUNE - 01 JULY 2018
Lymm Festival

Family

- **Crafts and Treasure Hunt** at Lymm Library
- **The Midnight Gang** - a play based on the David Walliams book
- **Meet the author of Pugalugs**
- **Morgan & West: Time Travelling Magicians**
- **Garden Party: With a visit from Mr Bloom**



Full details and latest programme at lymmfestival.org.uk
Pick up an Event Guide at Lymm Library and various shops and bars in the village
Connect with us on Facebook: **LymmFestival**



Village will be packed for Historic Transport Day

WHEN local man Alan Williams organised the first Lymm Historic Transport Day in June 2013 it was meant to be a one off to help raise funds for the ten day Lymm Festival.

But it was so successful, in spite of atrocious weather, that it has now become a key event on the region's transport event calendar as well as generating a wide range of education and heritage spin-off benefits.

"We do have a unique setting" explained Alan, who is still the Event Director.

"The Bridgewater Canal cuts right through the heart of our beautiful Cheshire village. We also have access to a glorious seven acre main event field close by and a tarmacked area next to the canal that can accommodate over a dozen traction engines." And this year for the second time the show takes to the skies with a flypast by a Battle of Britain Memorial Fund Spitfire marking the centenary of the RAF.

"There are some great contributions from the Warrington area too. North West Casual Classics Car Club has been supporting the event since year one and describe it as one of their favourite events in the calendar while the Burtonwood Association will be marking the 70th anniversary to the day of the start of the Berlin Blockade. This year too for the first time Network Warrington will be getting more involved by providing a vintage double decker shuttle for the centre of Warrington.

"The trick is to try and provide

something for everyone from transport enthusiasts to families" said field manager John Parry. "I suppose I could be described a bit of a 'petrol-head' and there will certainly be plenty that I am looking forward to seeing, but for the grandkids there's Lightning McQueen, LEGO and dinosaurs too. That's the complete package for lots of kids", added John.

The event prides itself on being largely self-funding with some top-up sponsorship from local businesses. Key sponsors this year are local building supplies company MKM and Central Self Drive who are celebrating their 50th anniversary. H&H Classic Cars, Urban Building, Redex and KC Autos complete an impressive line-up who can see the value in putting their name to an event that has earned a great reputation.

It all happens on Sunday June 24. The aim is to create an all-day experience with six buses providing park and ride facilities from local car parks as well as nearby Warrington town centre.

The village will be buzzing with traction engines, historic working boats and model railways on what is the first weekend of Lymm Festival which this year celebrates its own 20th anniversary.

Profits from the event have helped fund the setting up of the newly established Lymm Heritage Centre

close to the canal. The Centre tells Lymm's story which has been so heavily influenced by the arrival of the canal in the late 1760s. It has received over 6,000 visitors in its first six months. The project has also received important support from The Heritage Lottery Fund.

To find out more about the event go to lymmtransport.org.uk There are still a few opportunities for volunteers to help staff the event and free pair of tickets plus an invite the after-party. Details again on the website.

PRIMROSE HILL NURSERIES

**SUMMER
BEDDING
PLANTS &
HANGING
BASKETS
READY
NOW!**

**DISCOUNTS
FOR
QUANTITY**

*Caring Family
Business*

*Open 7 days
a week*

*Warrington Road,
High Legh,
Knutsford, Cheshire
WA16 0SQ*

Telephone
**01925
752635**



LYMM Historic Transport DAY

SUNDAY 24TH JUNE 2018
10.00am to 5.00pm

Spitfire Flypast (10.30)

Drive-In Parade (10.30)

Historic Sail Past (10.30)

Extreme Mountain Bike Show
Cars from the Movies including Lightning McQueen + Batmobile
Kids "Drive-a-digger"
Heritage Centre Canal Expo
Return of the Lymm Dinosaur
Lightning Jet + Provost cockpits
400+ Classic Vehicles, Model Railways, Historic Working Boats, Traction Engines, LEGO Expo, Model Car Racing, Narrow Gauge Railway
Live 40s/50s music + World Foods, Bar, Markets

ADMISSION
ADULTS £5.00 CHILD £3.00 FAMILY £12.00
PLUS FREE Park & Ride

CENTRAL SELF DRIVE **MKM BUILDING SUPPLIES**

lymmtransport.org.uk
f lymmtransport @LHTDay

20th Lymm Festival
HH urban KC

Cover image by www.gigamotocreative.co.uk

All set for Disability Awareness Day 2018

Work is well underway for Awareness Day which takes place at Walton Gardens, Warrington, on Sunday, July 15.

Founder and event co-ordinator Dave Thompson, now Chief Executive of Warrington Disability Partnership, said: "In 1992, who would have thought that a disability information event organised by a very small, then unknown disability group, would grow in size and stature, and would influence the development of a now internationally-recognised Disability Awareness Day.

"This year sees the '27th Anniversary event', which has inspired people from all over the world and provided advice and support to 100,000's of disabled people, their families, friends and carers," added Dave, who helped co-found Warrington Disability Partnership after breaking his neck in a sporting injury.

More than 25,000 visitors are expected to attend this year's DAD, the world's largest not-for-profit, voluntary-led, pan-disability exhibition, which will once again be hosted at Walton Hall Gardens with the support of joint principal sponsors St George Healthcare Group and St Mark Universal Copts Care.

A huge tented village housing approximately 250 exhibitors – including equipment suppliers; transport; holidays; leisure and employment providers; and support groups and services – is set to attract visitors to travel from all over

the 27th annual Disability Awareness Day which takes place at Walton Gardens, Warrington, on Sunday, July 15.

the UK and beyond. Inclusive Arts is just one of the highlights of the event – with a number of disabled artists including nationally recognised performers such as the Ella Performance Group and Carly Ryan. The Main Arena will offer visitors a range of family entertainment including guide dog display teams, falconry displays and a number of marching bands. Also on-site will be the fully accessible Sports Zone with have-a-go events including Scuba Diving in the temporary pool, climbing wall, shooting, archery, basketball and much more.

A free, accessible Park and Ride service is available from Wilderspool Park; plus a free bus service every 30 minutes starting at 9.30am from Warrington Bus Interchange; British Sign Language (BSL) interpreters; trained assistants; and a scooter / wheelchair loans service promises to ensure DAD is fully inclusive to all.

"The background story to DAD is a great example of just how far a 'can do' attitude can take you," says Event Founder and Co-ordinator, Dave Thompson MBE DL.

"What started out as a one-off event is now one of the highlights of the international disabled community's calendar – inspiring similar events as far afield as India, Cameroon, Uganda, Gibraltar and Thailand. Our team is also working

closely with one of our sponsors St Mark Universal Copts Care teams based in the UK and working in Egypt and Sudan."

The big day on Sunday July 15 from 10am to 5pm – will be a fitting finale to a week comprising a variety of complementary events to savour, which are guaranteed to attract many more visitors to

events aimed at disabled children and young people, mental health, learning disability, carers and a cultural diversity evening.

For more details on DAD and 'DAD Week' and all the events listed, please contact Warrington Disability Partnership on 01925 240064 or visit www.disabilityawarenessday.org.uk



Disability Awareness Day

SUNDAY 15th JULY 2018

Walton Gardens, Warrington

10am - 5pm

● Support Groups & Services

● Equipment Suppliers, Holidays & Transport

● Sports Zone, Arts Marquee, Live Bands, Dance & Drama

Principal Sponsors

Organised by

@WDPcomms

Disability Awareness Day

St George Healthcare GROUP

Promoting independence and safety;
maximising quality of life.

Tel: 01925 240064 www.disabilityawarenessday.org.uk

Promoting Independence Through Life and Work

Lymm High School strikes gold for arts

Students at Lymm High School have struck gold, thanks to their artistic talents - earning the school an Artsmark Gold Award.

Achievements in art, dance, music and drama have earned the school the prestigious Artsmark Gold Award – one of the top national honours for schools who show commitment to providing opportunities across all the arts.

Arts Council England launched the Artsmark awards to encourage schools to increase the range, quantity and type of arts available to students, while also raising the profile of arts education.

In recognition of the school's extensive participation across the art spectrum and after an audit and inspection from the Arts Council, the school received the Artsmark Gold Award.

Receiving the award will allow the school to further enrich their art provision and give them access to an enviable network of leading cultural organisations for the benefit of students and teachers.

Lymm High offers a wealth of opportunities for students to get involved with the arts and a tradition of staging ambitious productions; including last year's 'Snow Dragons', where students represented the school at the Dorfman Theatre, London, as a finalist for the prestigious National Connections event; and several celebrated shows such as 'Oklahoma', 'We Will Rock You' and more recently 'Les Miserables'.

Music provision is also extremely strong with students going on to

study at top music schools such as Guildhall and its String Quartet, winners of the Ensemble Open Class this year which took place at the Bowden Youth Festival last year.

The Artsmark Panel commended the school's sense of ambition and commitment to achieving excellence through the arts, as well as offering important space for more personal development and growth.

Head of Expressive Arts at the school, Rachel Richards, said: "The

award is the result of a long and successful journey. We have not only enriched our arts provision, working with many practitioners but have fostered great pride in sharing our creative practice and our students have relished the opportunity to show off their expertise.

"We had to undergo an audit of all the arts in the school and an inspector came to take a look at the way we operate here.

"It was a very useful process which helped us all to see where our strengths are and where we need to move forward."



Residents recognised for volunteering at Safety Central

SEVERAL Lymm residents have received special silver awards from Cheshire Fire and Rescue Service in recognition of their voluntary work done at Lymm Safety Central.

The stunning brand new £4.5m interactive lifeskills education centre (Safety Central) opened in September 2017 and since then has welcomed nearly 6,000 visitors through its doors.

The centre currently runs courses for KS2 and KS3 pupils helping them learn how to stay safe, well and happy in some of the places and situations they might otherwise come to harm.

Although designed by experts, the programmes are delivered by volunteers, usually leading groups of 10 children around the 14

different safety situations all very realistically demonstrated inside this amazing facility.

Other programmes currently in the design stages will be available for older people, people needing support with independent living and new parents and carers.

More volunteers are currently being sought.

Safety Ranger, Mary Clarke, said: "This really is a fabulous

opportunity for anyone with a bit of free time to pass on their lifeskills in the most modern and exciting environment.

"Full training is given and being mainly for children, the hours fit around school times".

For more details on how to get involved visit www.safetycentral.org.uk/ for full information about the Centre itself and how to become a Safety Ranger.



HAVANAS
*exclusive outside
catering*

Business meetings, private parties, weddings, canapé functions and birthday celebrations are just a few of the occasions that we cater for. With excellent service and quality food why not give us a call today.

download the brochure now at
www.havanasculcheth.com

or

Text BROCHURE and your email to 07788 282890 to review a copy of our catering brochure and discuss your specific requirements.



18 Church Lane, Culcheth, WA3 5DJ
01925 762 792 | www.havanasculcheth.com



@havanasgram



@havanassocialmedia

Switching May Queen to May was a great success!

SWITCHING Lymm May Queen to May was a great success says organising committee Chair Kath Buckley.

Thanking everyone who helped make it a success Kath said: "May Queen in May! Everyone said this was the right way forward and as Chair I was doubly pleased that the decision proved to be the correct one, for many different reasons.

"One of the main reasons for the change of date, apart from the hope for better weather, was the fact that the event would enable the schools to be involved if they wanted to, as the date did not coincide with the Whit holiday break.

"We had worked very hard to publicise the event with a new website, Facebook account and an all encompassing free programme.

"The theme was 'Celebration'

and all who took part thoroughly embraced this concept. We had more floats and participants in the procession than ever. There was a fantastic range, from Cherry Tree Primary celebrating the anniversary of Blue Peter, to the commemoration of the Suffragettes and the end of World War One.

"The Committee felt that there was a true festival feel about the event, and many people said that we had gone back to the true spirit of the original May Queen. Many of the older generation who came to watch and participate, said that, 'It was how the May Queen used to be'. A lot of the public said that it was, 'the best May Queen in

years.'

"Families were happy about the small rides for children, and the fact that we had over 30 stalls with a wide range of food and drink, local charities and children friendly activities, such as face painting, henna painting etc. Next year there will be a tea tent!

"The main arena events also reflected the community with Morris Dancing, a local singing group and a May Pole dance. We also had a tug of war competition which,

pardon the pun, we hope will go from strength to strength. Next year we will be looking at other suitable community competitions.

"Over all we were so pleased with the fantastic support from the local community which made the event such a success. However, we could always use more volunteers so if you want to be involved please contact us through our website and Facebook accounts, or come to our AGM on September 5, venue to be confirmed," added Kath.



School Fayre helps boost funds for 'Pitch In' campaign

LYMM High School's Summer Fayre helped raise funds for the "Pitch In" campaign to help raise £100,000 for a new 3G pitch and changing room facilities at the school.

The popular event took place in the school grounds and is undoubtedly one of the biggest community celebrations in the school's calendar.

Visitors enjoyed a whole host of activities including traditional games, fairground rides, inflatables, zorbing and a number of stalls run by the school as well as community enterprises.

There was also a range of music

and performing arts, displays and presentations, including the opportunity to compete in Lymm's very own singing competition, 'The Voice'.

There was also a staff sumo race, a coconut shy and raffles and the school's very first dog show for the chance to win a doggie makeover and bottle of champagne.

Money raised from the fayre will go towards the high school's 'Pitch In!' campaign, a fundraising initiative with a £100,000 target to bid for a new 3G sports pitch and changing room facilities.





**WARRINGTON
MARKET** EST. 1255



The Independent Fashion Market

Hosting some of the regions best independent fashion retailers under one roof with hundreds of garments for sale. Stop, shop, eat, drink and get pampered too at our beauty stalls offering hair, make-up, nails, treatments and therapies.

JUNE

23



Warrington Artisan Market

The market will pitch up in the newly refurbished, old riding school in the spectacular setting of Walton Hall & Gardens. Expect over 40 of the region's best creators, makers and producers, alongside live music and children's activities throughout the day.



Walking Day at Warrington Market

If you haven't visited us yet... why not experience our Traditional Values for Modern Lifestyles in our shiny new Temporary Market Hall. With plenty of entertainment for all the family we're sure you'll come back again and again.

JUNE

29



Warrington Cheese Festival

We're bringing together some of the best Cheesy Street Food Traders from Pizza, to Mac and Cheese, plus some fantastic cheeses for sale from across the UK and around the globe. We'll also have a licensed bar, live music, family entertainment and not forgetting Cheese Tasting School - see our Facebook events page to book a space at the tasting.



Lymm Artisan Market

Set in a beautiful canal side location at Henry Street car park, outside Lymm Youth Club, our new Artisan Market has something for everyone. Join us on the 3rd Sunday of each month for the very best the region has to offer!

SEPTEMBER

16



Customer Loyalty Scheme

Coming in September....
watch this space!



Opening Hours: Monday - Saturday 8.30am - 5pm

Find us on:

Warrington Retail Market @warringtonmarket

Further information:

Markets@warrington.gov.uk
Tel: 01925 632571

Free Parking for up to 3 hours at Time Square car park

Hale

CARPETS & FLOORING

NEW SHOWROOM NOW OPEN!



Find the perfect flooring for your home in our showroom plus expert design and installation advice. We have a huge range of quality carpets, Karndean Design Flooring, Polyflor, Harvey Maria and more. Free measuring and quotation service available.

11 London Road, Stockton Heath, WA4 6SG
01925 382890 | halecarpets.com

f t i p h houzz

EXCHANGE YOUR GOLD AND SILVER FOR INSTANT CASH



All items of jewellery accepted

Did you know...?
We accept silver jewellery, cutlery, tea sets, spoons, cigarette cases, candlesticks, trophies, trays, medals, coins and pocket watches.

ROLEX WATCHES WANTED! ANY CONDITION

Open: Tuesday-Saturday: 10am - 5.30pm
1 London Road, Stockton Heath
(First floor entrance on Fairfield Road)
07544 486 621

CHESHIRE GOLD & SILVER BULLION DEALER

Domestic IT Support

- ▶ PC/Network Support
- ▶ Websites/Social Media
- ▶ Free Site Surveys/Audit Reports
- ▶ Cloud Backups/Data Recovery
- ▶ GDPR Website Checks

GDPR Compliance Check



aspire Computers Ltd

01925 251143
sales@aspire-computers.com
www.aspire-computers.com

WELCOME TO THE IDEAL BUILDING COMPANY




Our mission is to deliver a high standard of building work at competitive prices and give complete client satisfaction every time.

Our services include: Extensions & Conversions, Complete Refurbishments, Loft Conversions, Structural Works, Homes Offices, Kitchen & Bathroom fittings, Electrical, Heating and Plumbing works, Full Plan & Design Service and General Building work.

For a FREE consultation please call
01925 730888

Urban Building Projects Ltd.
410 Europa Boulevard, Gemini Business Park, Warrington, Cheshire, WA5 7TR
Email: info@urbanbuildingprojects.co.uk Web: www.urbanbuildingprojects.co.uk

HAAS ELEC SA LABG

ChipsAway

Scratches and scuffs won't dent your pocket

Quality, professional mobile car paintwork repairs at a fraction of traditional body shop costs.

- ✓ Bumper scuffs
- ✓ Paintwork scratches
- ✓ Minor dents




Call or email Mark now to arrange your free estimate

07445029415 / 0800 0287878 mark.chorlton@chipsaway.co.uk



www.chipsaway.co.uk

REPAIRS FULLY GUARANTEED




**PREMIER
MARTIAL
ARTS**

Kids Karate (Includes Weapons Training)
Muay Thai Boxing
Krav Maga Self Defence
Combat Fitness Classes
Birthday Parties

For class times please visit our website
www.pmawarrington.co.uk

Unit 5 (Upstairs), Palatine Industrial Estate,
 Causeway Avenue, Warrington WA4 6QQ



SKIN-HUB
 Nurse Led Aesthetics
 Lymm Warrington

Anti-wrinkle injections
 1 area £115...2 areas £155...3 areas £195

Dermal Fillers
 From £100 (0.5ml)....£180 (1ml)

Chemical Peels
 From £80 incl 5 day post peel home care pack

20% OFF
 When you spend over £100

Call 07835 965929 or 01925 558769 for a free consultation
 visit skin-hub-treatments.com for full price list
19B The Cross Courtyard, Lymm WA13 0HR



Millercare 
 Mobility Specialists

Warrington's most experienced Motability dealer

Mobility Scooters



 **Motability**
 The leading car scheme for disabled people

Vecta Sport and Pelican Sport:
 All-round Suspension
 Long Range Batteries
 Transportable Scooters

Your new route to independence

For more information call Millercare
 01925 251212 | 1 Kingsway North, Manchester Road,
 Warrington, WA1 3NL

01925 651114 | 1 Kerfoot Street, Winwick Road,
 Warrington, WA2 8NU
www.millercare.co.uk



Community poppies to mark anniversary of World War 1

THE annual Civic Remembrance Day Service at St Mary's Church, Lymm will be a special occasion this year to mark the 100th anniversary of the World War One armistice.

Members of the local community – individuals, organisations, homes and schools – are being asked to provide home-made poppies which will be displayed as a cascade of poppies at the church for the service on November 11.

The Rector, the Rev Bev Jameson, who recently accepted an invitation to become chaplain to the Lymm branch of the Royal British Legion, said:

"Making a personal poppy display would be a wonderful tribute from our community in Lymm. Please be involved and make as many poppies as you can so we can make a grand display for the Remembrance Service.

"I am so honoured and pleased to be chaplain to Lymm and district branch of the Royal British Legion.

"My grandfather fought in World War One, my father in World War Two and I always wear their medals on Remembrance Sunday."

The poppies can be made of any material - knitted, tissue paper, cardboard, paper etc., and of any size but no larger

than a diameter of 10cm.

People may make as many poppies as they wish and should be taken to the church in September and placed in the collection box at the back of the church.

People are welcome to drop off their poppies earlier if they wish, but no later than September 22.

The church is open Mondays, Tuesdays and Wednesdays between 10am and 12 noon and on Thursdays at 11.15am and Sundays at 11.30am at the end of morning service.

There will also be a Roll of Thanks displayed in the church for any organisation or any individual who wishes to have their name included as having provided poppies for the display. However, people can choose not to have their name included.

Tony Bone, president of the Royal British Legion Lymm and District Branch said "We think this is a great initiative to involve the local community with the remembrance of those brave and valiant men who lost their lives during the First World War so that we may live in peace.

"We really hope it is well supported and it is a great success."



Rev Bev Jameson and RBL president Tony Bone.

Golf girls win for Lymm

AN all-girls team from Lymm Golf Club triumphed in the Cheshire County Junior team championships held at Chester Golf Club.

The team, consisting of McKenzie Gourlay, Sophie Mullarkey and Freya Jackson scored a superb 82 points - 10 points clear of their nearest rivals - was the only girls team taking part, in a field of 23 mixed junior and boys teams from across the county.

Sean Hammill of EnglandGolf commented: "This is an amazing achievement and having an all-girls team playing, never mind winning, is truly a breakthrough for junior golf in Cheshire - personally I would say nationally also".

Sophie Mullarkey won the prize for the best individual nett score with 42 points.

The girls' win will see them represent Lymm Golf Club and Cheshire, when they travel to Frilford Heath in Oxfordshire for the national finals which will take place on August 16-17.



Obituaries

John Bewley

THE funeral has taken place of John Arthur Bewley, a resident of Lymm for 41 years, who died at home on May 19, aged 75.

John loved Lymm and was often seen sitting by The Cross, chatting to people about his two whippets.

He was a keen caravanner and travelled all over Great Britain for months at a time. His favourite

place to visit was North Wales and for many years he spent his birthday with his family and dogs in Llandudno.

John's funeral took place on May 31 at Altrincham Crematorium.

He is survived by his wife, Sue, daughter Emma and son Richard.

Funeral arrangements were by John Burrows and Sons, of Lymm.

Paul Crouch

Paul Crouch died unexpectedly of a heart attack at home on Tuesday 8 May.

Originally from Cardiff and having spent many years in Anglesey, Paul had lived in Lymm since 1999.

He was a man dedicated to his family and his friends who all loved him dearly for his kindness and generosity.

Paul leaves behind wife Debbie

and daughter Emily.

The funeral took place on Wednesday 23 May at St. Mary's Church, Lymm.

Donations in his memory can be made to:

British Heart Foundation
<https://giftofhope.bhf.org.uk/In-Memory/Paul-Crouch>

RNLI
<https://paulcrouch.muchloved.com/>



Established 1878

John Burrows & Sons
Fourth Generation Independent Family

Funeral Directors

Friendly & Professional Service
Day or Night ~ J. Tandy

The Old Smithy, Mill Lane, Lymm,
WA13 9SE Tel: (01925) 752501

Golden Charter
Funeral Plans

www.johnburrowsandsons.co.uk

twentyfour seven
design & print ltd

FROM
£15

GET ANY CUSTOM IMAGE PRINTED ONTO...

ACRYLIC GLASS DIBOND

*We can also print onto a wide selection of other materials.

QUALITY PRINTERS • EXCELLENT SERVICE • QUICK TURNAROUND

For all enquiries please contact us on:

01925 240 247

info@247print.net www.247print.net

CLASSIFIED

FREEPHONE 0800 955 5247 to advertise

ACCOUNTANCY & BOOKKEEPING

BOOKKEEPER/ACCOUNTANT. Licensed for maintaining financial records, VAT Returns, Payroll Service, Management Accounts, SAGE Software Consultancy. **Contact: 07815 617914.** (G*)

CARPETS, CURTAINS & INTERIORS

Paul Bains Flooring Solutions Ltd



- CARPETS - WOOD - LAMINATES -
- DECORATIVE VINYL FLOORING -
- FREE CHOOSE AT HOME SERVICE -

101 Bucklow Gardens, Lymm WA13 9RN
T: 01925 748549 M: 07973 376224
E: paulbainsflooring@msn.com
www.paulbainsflooringsolutions.co.uk (G/19)

CARPET CLEANING

A1 STAINBUSTERS. A Warrington company cleaning carpets, hard floors, Upholstery (Leather + fabric) and curtains in situ. FREE quotes for domestic and commercial. Approved carpet cleaners for Hancock and Woods for over 10 years. **Call John on 01925 852088 or 07765 314080** (G/19)

CLEANING SERVICES

arleys angels

- Spring Clean Specialists
- Presenting your home for sale
- Moving house
- After building work cleans

01925 266834
... because you're worth it! (G*)

SIMPLY THE BEST CARPET CLEAN YOU will ever have. Cleaners UK Ltd. Est 28 yrs. Have your carpets & sofas beautifully deep cleaned leaving them fresh smelling & colour restored. Latest & best methods. Dry/steam. Leather cleaning, oriental rug specialist. Professional, reliable & affordable. **For more info call Neil Riley on 01925 264989/ 07831 336060 www.cleaners-uk.net** (G/19)

ELECTRICAL CONTRACTOR

TRUST PROPERTY ELECTRICAL SERVICES. NICEIC Part P Approved Contractor. All Electrical work undertaken. Inspection & Testing & PAT Testing. All work certified & guaranteed. **Call Tim on 07754409906 or 01925 601055** (G9/18)

EQUESTRIAN SUPPLIES & ANIMAL FEEDS

STABLES SADDLERY. Est 1964. Good stock of all equestrian supplies and animal feeds. Also storage available for trailers, caravans and household goods etc. **Tel: Barbara Williams on Lymm 752762.** (G12/18)

GARDENING SERVICES

Beechwood Industries Ltd
Landscape Management Solutions

- Garden Maintenance
- Lawn Care
- Landscape Design
- Construction
- Paving
- Tree Surgery
- Free Assessment
- Free Consultation

Contact us on:
07749 253 308
01925 860544
www.beechwoodindustries.co.uk (G*)

J C SLAVIN
Landscapes & Garden Maintenance

Landscape Design • Garden Landscaping
• Plant Hire • Flagging • Fencing • Tree Hedge Pruning

01925 756 839 / 0161 775 0297
Mob: 07737 655 211
www.jcslavin.co.uk (G7/18)

HANDYMAN

Handyman Services
Home, Office & Garden

Internal and External Painting • UPVC Window and Door Repair and Replacement
Mechanism/Lock Changes • Soffits and Fascias
Gutter Cleaning, Repair and Replacement
Flagging • Fencing • Patios • Jet Washing
All Garden Work • All DIY

Call today for a FREE quote

Tel Neil: 01925 757905 (Lymm Based)
Mob: 07813 201850
handymanserviceslymm@hotmail.co.uk (G10/18)

HOME SERVICES

ATLAS
Your friendly local independent pest controllers

SUMMER SPECIALS:

WASP CONTROL £39 INVASIVE BEE CONTROL £55

Affordable, professional, guaranteed service. Fully insured, fixed prices - no surprises once on site! Discrete vehicles, no embarrassing signs
07999 487 925 / 01925 445 222
www.atlas4u.co.uk (G6/19)

MORTGAGES

INDEPENDENT MORTGAGE ADVICE. For local, impartial and professional advice on all aspects of mortgages contact Darren Simpson at Amathus Financial Services on **07708 975122 or 01925 399999** (G12/18)

OPTICIANS

ADCOTT OPTICIANS. State of the Art opticians in the heart of Lymm Village. Comprehensive sight tests and a wide choice of spectacles tailored to you, whatever your budget. **01925 757075** (G11/18)

PAINTING & DECORATING

BENJAMINS PAINTERS AND DECORATORS. 20 years professional experience in commercial and domestic decorating, wallpapering, coving, interior and exterior work. **Telephone 07837 452514 or 01925 755198.** (G12/18)

PAYROLL

WHY TRY TO BE A PAYE EXPERT? Watkinson Black can provide a cost effective payroll service, releasing you to concentrate on your business. **For further details please phone: 01925 413210 or e-mail: info@warringtonaccountants.co.uk** (G*)

PLUMBING

CL PLUMBING AND GAS SERVICES
Local honest plumber covering all aspects of plumbing and gas works. Boilers and central heating installed and repaired. Bathroom suites supplied and fitted. Cookers and fires fitted. Landlord gas safety checks. All plumbing emergencies - 24 hour call out. No job too small, OAP Discount rates. **Tel Craig 01925 819692 07851 405466 www.warringtonplumbingservices.co.uk** (G2/19)

Gas Safe Registered Engineer

Andy Gas of Lymm, specialist in: Boiler upgrades, servicing, repairs to all domestic heating and gas appliances. For a professional service call Andy **07753 838129 or 01925 753712** (G2/19)

RE-UPHOLSTERY

Orchard Soft Furnishings

RE-UPHOLSTERY
CURTAINS • BLINDS

FREE MEASURING & FITTING

TEL: (01925) 756388
www.orchardsoftfurnishings.co.uk (G11/18)

TAXI / PRIVATE HIRE

Horn's

Airport Transfer & Taxi Specialists
CALL MARTYN: 01925 751761
MOBILE: 07881 786250 (G9/18)

TUITION

JustEnglish
SPECIALIST ENGLISH TUITION

One-to-One Tuition
Experienced Teacher,
Examiner and Moderator
100% Pass at GCSE 2017
Call Wendy 07863 888 599
www.justenglishlymm.co.uk (G2/19)

WINDOWS & GLAZING

LYMM WINDOWS & CONSERVATORIES LTD, BY NEIL COPELAND. Specialist in uPVC double glazing windows, doors, porches, conservatories, also fascias and guttering. FENSA registered. All work guaranteed. **Tel: 01925 756138 / 07961 361550.** (G2/19)

MOTORING SERVICES

CAR SALES

PARKVIEW CAR SALES

We buy and sell
QUALITY CARS
Best price paid
Telephone Peter on
01925 575737 /
07957 545479
23 Padgate Lane
Padgate, Warrington
Cheshire, WA1 3RS (G*)

Orbit News Ltd
Celebrating
50 YEARS
Publishers of:
Lymm Life
.Warrington-Worldwide
Village Life
Culcheth Life
Frodsham Life
Lifestyle

Banner & Co

Independent Residential Sales and Letting Agent



EXPERIENCE

A BETTER WAY TO MOVE HOME THIS
SUMMER AND PICK THE AGENT
WHO WILL GET YOU THE
BEST PRICE
FOR YOUR PROPERTY



01925 753636 www.bannerandco.co.uk

Please note that if you have already instructed another agent, we would advise you to check any agreement you may have to ensure you are not liable for more than one commission by instructing us as your agent

