

VILLAGE life

Your Community Magazine

Issue 172 July 2015

FREE

U
urban

BUILDING PROJECTS LTD

Extension &
Building Renovation
Specialists

Tel: 01925 730888

www.urbanbuildingprojects.co.uk

Stockton Heath • Appleton • Grappenhall • Thelwall • Stretton and surrounding areas



**St Rocco's
brightest fundraiser**

Page 4

eden

LANDSCAPING & DRIVEWAY
SPECIALISTS

Tom Morgan

01925 263125

07595 184312

www.eden-landscapes.co.uk

info@eden-landscapes.co.uk

For all your local news www.warrington-worldwide.co.uk

Auto Enrolment

Over the next few years every employer in the country will have to set up a pension scheme for each of their employees over the age of 22 and earning over £10000 a year. The authorities have started writing to employers advising them of their 'staging dates' - this is the date at which the scheme has to start.

For an employee this should be good news because it is effectively 'free money' from your employer which has to be saved within a pension scheme. The employer has to start contributions of at least 1% of an employee's salary, and this shall rise over the next few years gradually.



Don Wernham,
Financial Planner

When you are offered one of these schemes consider the consequences of opting out very carefully. These are savings for your retirement and one day will come in very useful.

For employers however (myself included) this is just another piece of bureaucracy to think about, in addition to the day to day running of your business. People say that Auto Enrolment (AE) is all about pensions, it isn't. It is around 20% about pensions, the other 80% is all about compliance. I say this because the government are absolutely committed that this is going to work.

The pension time bomb of retired people living longer, and a shrinking workforce left to pay for them is not going to go away. So when an employer gets their staging date the right systems have to be set in place. These include records of what you are doing and when. For example if somebody elects to opt out initially, you have to record this, and also give them the opportunity (regularly) to opt back in again. Now think about that when you are in the middle of a staff meeting on a Monday morning.

If you would like any help with Auto Enrolment then contact our office for a free initial chat.

Disclaimer – views expressed here are my own, they do not constitute advice and are based on understanding of the current system.

– TECHNOLOGY

Simple Solutions uses the latest technology to keep you updated, even when you are on the move or abroad, check out our website for more details.



PENSIONS

• Pensions are changing due to the March 2014 budget and you now have a lot more options to consider'

INVESTMENTS

Our investment expertise will ensure that you have the most suitable investment to help you achieve your financial goals.

We use:

- Asset Allocation
- Risk Profiling
- Diversification
- Correlation

1st Floor, 67 London Road
Stockton Heath, Warrington
WA4 6SG

Tel: 01925 266628
Fax: 01925 267043



Editor
Gary Skentelbery

Production
Paul Walker

Account Executives
James Balme

Advertising
Freephone
0800 955 5247

Editorial
01925 623632

Email
info@warrington-worldwide.co.uk

Websites
www.culchethlife.com
www.frodshamlife.co.uk
www.lymmlife.co.uk
www.village-life.co.uk
www.warrington.tv
www.warrington-worldwide.co.uk

Address
New Media Centre
Old Road, Warrington
Cheshire WA4 1AT

Distribution
Village Life is distributed freely to selected homes throughout the area as well as being available to pick up from various outlets, some of which are listed below.

- Appleton:**
Village Hall, Co-op
- Grappenhall:**
Co-op, Community Centre
- High Legh:**
Garden Centre, Village Hall
- Knutsford:**
Fryers Garden Centre, Library, Heritage Centre, Shaw Heath Social Club, Mr Chips
- Lower Walton:**
One Stop Shop
- Mere:**
Village Store, Parish Club
- Mobberley:**
Rajar Building, The Victory Hall
- Stockton Heath:**
Co-op, Library
- Stretton:**
Beehive Stores, Stretton Newsagents
- Thelwall:**
Post Office

Village Life is published monthly by Orbit News Ltd.

The contents of this magazine are fully protected by copyright and may not be reprinted or reproduced without prior permission of the publishers.

The publishers are not liable for any statement made or opinion expressed by third parties in this publication.

Printed by TwentyFourSeven

Editor's comment

IN an ideal world, a small village like Appleton Thorn would not have to live alongside a young offenders' institution. But, in general, HMYOI Thorn Cross has, over the years, been a good neighbour not only to nearby residents but also a primary school.

So it is somewhat surprising to find opposition to an application from Thorn Cross for planning permission to change the use of an existing agricultural building to a small scale farm shop selling goods mainly grown or made on site.

Appleton Thorn has no shop and seems unlikely in the near future to have one, so a farm shop within the YOI site could be a really useful amenity. If it provides a gainful occupation to offenders which might encourage them to lead useful, law-abiding lives after they are released, so much the better.

True, opposition to the scheme has been low key. One nearby resident objected on the grounds of noise, glare from lighting and traffic grounds but another offered support and wished the project success. Although members were not

unanimous, Appleton Parish Council did not object.

Planners believe the small scale of the operation will mean it does not trade from any defined retail centres and will, in fact, fulfil a local need. Noise from vehicles is likely to be insignificant and highways officers do not believe there will be any road safety issues.

The exterior appearance of the building to be used will not be altered so there will be no impact on the Green Belt.

It seems to be a "win, win" situation for all concerned – but if such optimism is misplaced it should not be beyond the wit of man to enforce any necessary changes.

A CALL too often we hear of young people complaining that there is "nothing to do" – and sometimes, unfortunately, we hear of youngsters who solve the problem by resorting to vandalism.

So it is wonderful to be able to report on one young lady with different ideas. Ruby Davies, aged



nine, wrote to Grappenhall and Thelwall Parish Council: "I have just this Wednesday discovered an idea.

"My idea is that we can have an open-air cinema in Euclid Park, selling tickets to buy more equipment and oil for the swings. People can bring their picnics and snacks. I hope you consider my idea to be acceptable.

"I would be happy to organise all of this with the help of my parents and friends as I am keen to improve the playground in the park."

Needless to say, the parish council decided to support Ruby wholeheartedly.

Mayor launches exemplar business

MBS Site Supplies run by Appleton based MD Carl Oates was described as an "exemplar" business by Warrington & Co. MD Steve Park during a launch night at the Village Hotel, Warrington.

Mr Park praised Carl for the way he had "integrated himself in the local community" and was "rapidly becoming one of the most well known business people in the town."

"Carl gets into the networking and understands it is not just about making a profit but the way a business

can integrate into society and the community," said Mr Park.

He went on to praise his work with Warrington Disability Partnership who are set to benefit from a 2.5 per cent donation from the companies takings in Warrington.

Mayor of Warrington Cllr Geoff

Settle was on hand to officially welcome MBS Site Supplies into Warrington, with new premises set to open on Dallam Lane within the next month.

Mr Oates thanked the Village Hotel for helping stage the launch event and Village's life's sister publication and website warrington-worldwide for "fast tracking" his business five years through local advertising and social media networking and "most importantly" his team at MBS.



■ Carl Oates (centre) at the launch event at the Village Hotel.

Colour Run will be St Rocco's brightest fundraiser yet

A new fun run organised by St. Rocco's Hospice is set to turn the town multi-coloured on August bank holiday.

The St. Rocco's Colour Run takes place at Walton Hall and Gardens at 3pm on Monday, August 31, where runners and walkers will start in white and finish bright, getting splattered with powdered paint as they complete the 3km course.

Ideal for all ages and fitness levels, the event is the first of its kind in Warrington and is designed to appeal to supporters old and new, who are looking for a memorable way to raise funds to support the Hospice.

Participants are asked to raise £30 sponsorship for their 30th anniversary – with every penny going to help St. Rocco's care for the community.

The Colour Run is sponsored by Livewire, with additional support from McDonalds, accountants Walker Begley, and Lloyds Bank.

Claire Houghton, Income Generation Manager at St. Rocco's

said: "We're really excited about the Colour Run, which will be our most colourful fundraiser yet. The introduction of new services like Hospice At Home this year have meant we need to raise more money than ever, and this allows people to have fun whilst at the same time helping us continue our care.

"We'd like to say a big thank you to our sponsors, and we can't wait to see everyone looking colourful in August."

Registration for the Colour Run is £12 for adults, £8 for under 16s and £35 for a family of four. There is no minimum age required to take part, although if you are under 16 you will need to register with a parent or guardian. To take part, please visit www.stroccos.org.uk or email fundraising@stroccos.org.uk



One word for village school - "outstanding"

OFSTED inspectors had one word to describe St Matthew's CE Primary School at Stretton – "Outstanding".

Pupils' behaviour, the school's work to keep pupils safe, the teaching of writing, governance – all have been rated as outstanding. Pupils love their school – and everyone is delighted that they have been given the highest possible rating following the previous inspection which rated the school as "good."

Inspectors say the pupils' love of school is reflected in their excellent punctuality and above average attendance. Pupils throughout the school, including children in the reception class make excellent progress and are very well prepared for the next stage.

In addition, the report states that "pupils say that they feel safe in school because of the high quality support and guidance they receive.

Staff morale is high and governance outstanding. "School leaders have successfully created a school community in which high standards of teaching, learning and behavior are expected and are the norm," the inspectors' report adds.

The report recommends the school should continue to establish opportunities for staff to share their excellent practice so that it can improve further.

Cllr Jean Carter, the borough council's lead member for children's service said: "The school has clearly worked hard and effectively to drive up standards and I am delighted that they have received this accolade from Ofsted. This is another clear indicator that schools are improving in Warrington reflecting the passion and dedication from schools, their staff, parents and the council, who are all committed to ensuring all Warrington children are supported to do the very best they can."

Headteacher Hazel Fryman, said: "I am extremely delighted our school has been judged an 'Outstanding' school in all areas. This is a tremendous achievement and is one that the school community truly deserves. I am thrilled that the inspectors recognised the tireless hard work, commitment, dedication and diligent professionalism that occur every day across our schools."

Governors chairman Jane Morris, said: "The governing body is absolutely thrilled with our outstanding OFSTED report – it is all down to the hard work and commitment shown by all the staff and pupils."



Hatton Fun Day

4th July 2015 from 11.30am

- Craft Stalls • Side shows • Raffle
- Wine & Beer • Family Fun • Tombolas
- Cakes & Goodies • BBQ
- Summer Band Live!

Here at the Hatton Pub & Grill we specialise in 35 day aged steak, fresh fish from our local seas, real ales and fine wines

Five Big Screens showing all sports channels in HD

The Hatton Pub & Grill, Hatton Lane, WA4 4DB

Tel: 01925 730314

info@thehatton.co.uk | www.thehatton.co.uk

orb
jewellery

www.orbjewellery.co.uk

01925 759492

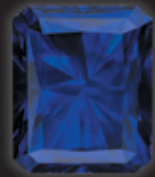
Jewellery for all Occasions



Jewellery Repair Workshop

Watch Batteries & Straps

Rhodium Plating



Insurance Valuations

Jewellery Cleaning & Re-sizing

Bespoke Design Service



1 The Grove, Lymm (next to post office)

Tue / Fri 9:30 - 5:00 Sat 9:30 - 4:00 (Thur till 7 pm)

Kitchen Makeovers

from the UK's leading
Facelift Expert



Not only will a Dream Doors facelift save you £1000's, but you will not have to suffer the disruption and dust that comes with a total refit.

- Fitted kitchens or replacement doors & worktops
- Huge choice of doors, worktops, sinks, taps & appliances
- Trusted Reputation
- Less hassle, less time & less money

Call us Today!

DREAM DOORS®

NEW LIFE FOR OLD KITCHENS

Call now for a Free Design
quotation 01925 211308



Visit our Showroom: 92 Knutsford Road, Grappenhall, Warrington WA4 2PJ



www.dreamdoors.co.uk

* Terms & Conditions apply, please ask for full details.



Warrington
Service Centre

Leading MOT Automobile Servicing Specialist For Cars & Bikes

*Interim Service & MOT on vehicles up to 1799cc with semi-synthetic oil

**MOT & Service
Special Offer**

Book both on the
same day to save
time and
money!

from just
£99*

Call now on **01925 232255**
to book, quoting **WW02**

www.warringtonservicecentre.co.uk

Village festival offers four action-packed days

FOUR action packed days, offering something for all ages and all interests, will start on July 2 when the annual Stockton Heath Festival gets under way.

There will be art, music, drama, comedy, poetry, dancing and children's entertainment.

The talent of local artists will be on show with an exhibition at St Thomas' Church.

Music will include the Rhos Orpheus Male Choir, swing band Schwing with music from swing and Italian classics to pop and soul, Wire County with a variety of styles including Country, R & B and current pop while the finale night sees the return of the Fab Four top tribute group The Mersey Beatles.

The Warrington Light Opera are doing Songs from the Good Old Days and local schools will be coming together in a celebration of Gospel music.

In addition to this there will be lots of free music to delight visitors at the Festival Field on Saturday and Sunday.

Drama will come from Festival favourites Oddssocks with their unique interpretation of Shakespeare's witty battle of the sexes Much Ado About Nothing.

Stockton Heath Methodist Dramatic Society have "Happy Jack" written by John Godber based on the ups and downs of his grandparents' 60 year marriage and a special treat with a local connection will be the children's theatre production of Alice in Wonderland.

An adult comedy show will feature top North West comedians including writer, broadcaster and Phoenix Nights star Justin Moorhouse.

Children's entertainment includes story telling, a cinema showing Paddington, a Zoo, Whizz the Wizard, face painting, scouting, sports taster sessions, theatre workshop and mountain biking display.

There will be local history displays from Latchford Local History Group and a talk from Janice Hayes of Warrington Museum and there will be a photography competition, floral displays and demonstrations and

ceramic painting.

Other events and attractions include a quiz night, canal boat trips, allotment open day, model railway display, bell ringing, treasure trail and fun dog show.

The popular arts and crafts and farmers market will provide a great shopping experience with original items and delicious food and drink.

For full details see the programme delivered to local homes, available at the box office or from the website www.stocktonheathfestival.co.uk



Donkey Delight at Walton zoo!

PARK rangers at Walton Hall and Gardens are delighted to welcome Charlie and Lenny to the Children's Zoo.

They are two young donkeys from the Donkey Sanctuary and The Children's Zoo has fostered them and is offering them a loving home for the rest of their lives. Lenny is a dark brown donkey and is four years old. Charlie is a strawberry roan and is slightly older at five years old.

Lenny and Charlie were relinquished to The Donkey Sanctuary in April 2014 by a lady from Yorkshire along with two other mares, as her husband had been injured and had to retire. They were taken to the centre in Buxton where they received a through medical,

and settled in, joining a group of resident donkeys and spent their days quietly roaming the fields and barns.

As Lenny and Charlie are both nice natured young donkeys staff at the Donkey Sanctuary decided they would benefit from joining the foster scheme where they would receive one to one attention and were matched to The Children's Zoo, who were waiting for young confident donkeys who would fit into the lively atmosphere of the zoo.

The new arrivals follow the death last December of popular Bo Bo the donkey, who had been a fixture for nearly 30 years.

Ranger Peter Cookson-Dean said: "It is fantastic to have donkeys'

return to the Children's Zoo. We love coming into work and listening to them braying good morning! We hope that the donkeys will be able to interact with school groups and work experience students and volunteers once they have settled down.'

There will be regular updates on how Lenny and Charlie are getting on via the zoo's facebook page - The Childrens Zoo, Walton Hall Gardens. The zoo is open daily from 10:30am - 4:45pm



Advertiser's announcement

Rhodes

Rhodes island is the third largest Greek island offering sandy beaches, picturesque villages and interesting architecture i.e. Medieval, Venetian, Byzantine, Turkish plus traditional architecture from uniqueness.

The capital lies outside and within a Venetian castle and is the largest inhabited medieval town in Europe. Here you will find Gothic churches, the Palace of the Grand Masters etc while you wander through the narrow stone-paved alleyways, stone arches,

lovely fountains and palm trees . In the new city of Rhodes most of the buildings are Italian ie neo-Gothic and Venetian. There are numerous parks and squares in the New City plus a casino, National Theatre and traditional Dance Theatre.

Shopping is a must and then relax at one of the many cafes or restaurants and sample the local cuisine. Greek food is still a favourite of many people, including Moussaka, Greek Salad, Tzatziki, Baklava, Dolmades,

Britzolas etc.

There are many beautiful areas to stay on Rhodes - Ixia is just a few miles from Rhodes Town and has hotels, restaurants, bars, cafes, shops and water sports. Ixia is just a short transfer from the airport.

Ialysos village is a popular place to stay and hosts the European Windsurfing Championships Kremasti, staying here tourists can enjoy the sandy beach and can easily access Rhodes town via taxi or local buses. Lindos is probably the most beautiful village on Rhodes overlooking a picturesque bay with whitewashed houses and pebble paved courtyards, sit at one of the cafes and experience the local ambience.

Faliraki is where all the night life carries on through the night with the bars and clubs attracting the younger visitors.

There are Festivals throughout the



■ Linda Crowder – Stockton Heath Travel

summer months ie Medieval Rose Festival, sound & Light performance held in the Castle grounds, Flower Festival, Film Festival and many more. There are numerous excursions ie Lindos Cruise, Jeep Safaris, Symi & Panormitis, Green Island Tour, Panoramic City Tour, Scuba Diving etc, also private tours can be arranged locally. Direct flights from Manchester.

So if this appeals to you contact us either by email enquiries@stocktonheathtravel.com, call us on 01925 269400 or call in and have a coffee while we do a quote

We are open Monday to Friday 9am to 5pm and Saturdays 9am to 4pm. If you cannot make these times we are happy to arrange an appointment at your convenience.

**80 London Road, Stockton Heath
01925 269400**

enquiries@stocktonheathtravel.com

Follow us on twitter @stocktonhthtvl, facebook and linkedin



Keep the village alive support your local traders!

Warrington's only supplier of German kitchens



www.jdkitchens.co.uk

01925 636997

sales@jdkitchens.co.uk



JD Kitchens

- ✓ Luxury German & UK Kitchens
- ✓ Family Business
- ✓ Est 2001
- ✓ Backed by KBSA Consumer Protection Scheme



Visit us at:

**4 Gorsey Lane,
Warrington
WA1 3PU**

FREE Recipe book when you bring this advert

Special events at historic walled garden

THE Friends of Grappenhall Heys Walled Garden have announced an attractive programme of events throughout the summer and autumn.

On Sunday, July 5 strawberry cream teas will be served in the afternoon. Sunday, July 12 will see a fun day being staged and on Saturday, August 8 there will be a "Friends Evening" for members only, between 5pm and 8pm.

A food festival is being held on Sunday, September 13 and on Sunday, October 4 it will be "Apple Day."

Sunday, October 18 will see a Harvest Festival Service held in the garden from 2pm to 3pm.

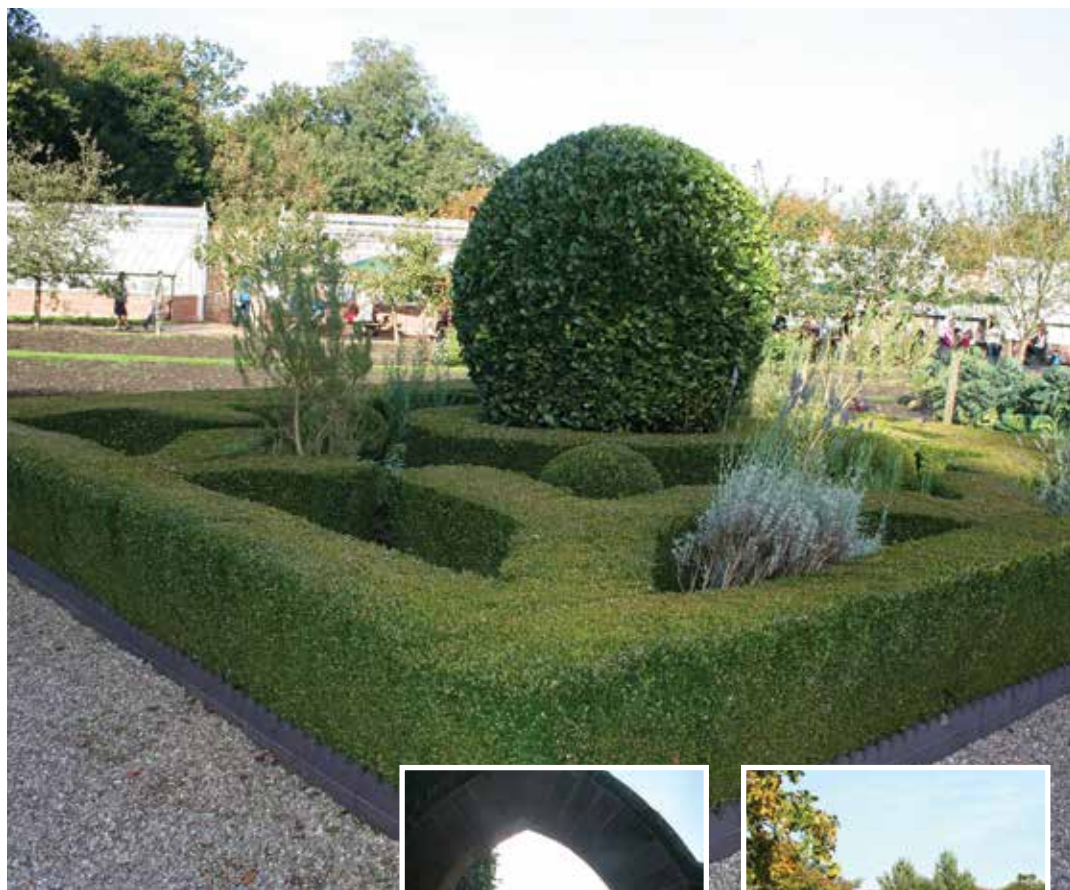
On Saturday, October 31 there will be Halloween activities and a Christmas Fair will be held on Sunday, November 29.

All events are from 1pm to 4pm, unless otherwise stated.

The Walled Garden, in Witherwin Avenue, is all that remains of the Grappenhall Heys estate, which was founded by banker Thomas Parr around 1830. The house was demolished in the 1970s and the Walled Garden eventually fell into a dilapidated state.

Over the years the garden has been restored and the latest stage of restoration began after the garden was taken over by Grappenhall and Thelwall Parish Council in 2005.

It is open every Sunday with a café serving teas, coffee, home-made cakes and savouries from 12 noon to 4pm.



Pupils test-drive fire service's new website

CHESHIRE Fire and Rescue Service has launched a brand new website for kids.

A place for young people to learn and play, the site has been named "Sparkton" by children at Thelwall Junior School.

Year 5 pupils tested the games before the "online town" went live and were full of praise for the site which is aimed at children aged 8-11.

Cheshire Fire digital and media services manager Caroline Jones said: "We wanted to have a site that children will enjoy playing on but at the same time learn vital safety tips."

"Firefighters and staff do a lot of safety talks to young people in schools and it is a great way of communicating important information

as they will always go home and talk to their parents and siblings about what they have been told.

"We want Sparkton to be another tool the children can enjoy and have worked closely with a local school to make sure it is something they will use and learn from."

Anyone can go online to learn and play, testing their knowledge by playing games that test road safety know-how, spot dangers in the home and garden, avoid the hidden hazards in open water and dress a firefighter for an incident.

Sparkton can be found on the Cheshire Fire and Rescue Service website www.cheshirefire.gov.uk/sparkton





Are you considering buying a hot tub?

Hot Tubs • Chemicals • Repairs



Hot Tubs • Pools
Saunas

01925 811911 / 07985 244 433
Unit 10B Palatine Ind Est, Warrington, WA4 6QQ

www.qualityspas.co.uk



Commercial
Commercial Property
Litigation
Employment
Wills
Trusts
Probate
Personal Injury
Conveyancing
Crime
Family & Divorce

01925 231000

info@fdrlaw.co.uk

Warrington
Stockton Heath
Frodsham

www.fdrlaw.co.uk



SHORT-TERM
MEMBERSHIP
AVAILABLE

JOIN OUR HEALTH CLUB TODAY FOR 6 WEEKS OF FITNESS FROM £65!

- Fitness experts offering support, motivation and advice
- 22m indoor swimming pool
- Over 35 exercise classes a week
- Steam room, sauna and whirlpool
- Personal training available
- Cardio and resistance gym with PULSE equipment
- A friendly and sociable club
- Swimming lessons
- Tennis courts

Pop into the health club or give us a call on:
01925 730 000 and quote 'VILLAGE LIFE'
parkroyalleisure@QHotels.co.uk
Stretton Road, Stretton, Warrington, WA4 4NS



QHOTELS
INSPIRED
BY YOU

THE
PARK ROYAL
Warrington,
Cheshire

Terms and conditions apply and offer subject to availability. Price based on a six week, off-peak membership.

Money Column

By Margaret Black

Research & Development (R&D)

Tax relief for 'R&D' was introduced in 2000. The most basic question is "what qualifies as 'R&D' in respect of HMRC legislation?" Apparently 'R&D' possible tax relief and tax credits remains one of the most under-claimed.

'R&D' tax relief – The UK's most incredible corporation tax relief

Up-dates and rewriting of legislation has changed this area of taxation since the relief was first presented

making it a less unwieldy and involved process. It has become one of the most generous tax reliefs in any of the countries recognised for the Organisation For Economic Co-operation And Development (OECD). Although the changes have taken place, 'R&D' awards are not being taken advantage of and thousands of entitled companies are missing out on these tax benefits

The reason why companies are not taking advantage is due to the lack of understanding of what actually represents 'R&D' in respect of HMRC legislation. It appears that 'most company finance directors mistakenly believe that 'unless a scientist operating in a secret laboratory and dressed in a white lab coat is employed by the company', then 'R&D' is not taking place' and maybe at first glance current 'R&D' legislation suggests that it could be a reasonable assumption to make.

'R&D' activity does not have to be 'ambitious innovation' nor does it have to be 'creation of new technologies', but consideration would be given if it were 'significant improvement to existing technology' by those who are considered experts in the field, (possible company employees for example) this would be perfectly acceptable where the 'R&D' legislation is concerned

How The R&D Tax Relief Works. HMRC permits an 'extra' 125%, (or for the larger companies 30%), of identified costs to be written off against taxable profits. For example if R&D expenditure of £100,000 is identified, then there will be £225,000 included in the tax computation, giving an extra £125,000 of cost to be offset against taxable profits. The current rate of corporation tax is circa 20%, equating to £25,000 reduction of the tax

Loss making companies will not be excluded from the benefit of the relief and tax credits can be claimed on losses which have been enhanced by R&D expenses instead of carrying losses forward to offset against future profits. Loss making companies can surrender losses which refer to the R&D claim for a 14.5% R&D tax credit.

Expenditure allowed as part of the claim fall into five categories: Staff costs, consumables, subcontract labour, externally supplied workers and heat and power cost. Identifying these costs can be time consuming and maybe as such is seen to be only minimally advantageous when compared to any tax benefits

If, when you read this article, you believe you may qualify for this area of tax relief please call us and we can advise you of how you can access the specialist care you may need.

Free no obligation meeting – Contact us on 01925 413210

Please note that these ideas are intended to inform rather than advise and you should always obtain professional advice before taking any action.



David Watkinson and Margaret Black

Watkinson Black
Accountants who care for Clients who matter



Chartered Accountants
Registered Auditors

Contact David Watkinson or Margaret Black at:

1st Floor, 264 Manchester Road, Warrington

Tel: 01925 413210

or email: info@warringtonaccountants.co.uk

www.watkinsonblack.co.uk

Hotel in search for best wedding speeches

The Park Royal Hotel at Stretton is calling for entries for the first-ever search for the UK's best wedding speeches, launched by AA hotel group of the year, QHotels.

The QHotels Wedding Speech Awards will recognise the top wedding speeches by the best man, groom, father of the bride and the bride, amongst others.

Over the next three months, The Park Royal is calling for the best speeches to be entered into the awards via the hotel group's Twitter and Facebook page using #Weddingspeech.

Any speech given at a wedding reception can be submitted, provided the speech is on a video that has been uploaded to the internet and is publicly available. Nominations can come from the speech-givers themselves or another wedding guest.

Prizes – including an overnight stay, a golf lesson, spa day, afternoon tea and vouchers for QHotels – will be awarded to the winning speech-giver and nominator of each category.

The Park Royal hosts hundreds of weddings every year and works closely with the happy couple's and their families and friends, to ensure the big day is memorable. General Manager of The Park Royal, Paul Gallon, said: "We see lots of different wedding speeches, from the traditional to the alternative, but whether funny or sentimental, we know a lot of preparation and nerves go into each and every speech to make it memorable.

"Many wedding speeches are captured on camera at The Park Royal which gives us the perfect opportunity to celebrate the very best

real speeches across the UK. But what we really want to see is the people of Warrington getting involved and sharing their wedding speech talents, giving the rest of the country some competition!"

People can enter a speech into the awards by sending a link to the wedding speech video with #Weddingspeech, stating the category they are entering, to @QHotels on Twitter or post onto QHotels' Facebook page: <https://www.facebook.com/QHotels>.

For more details about QHotels Wedding Speech Awards and how to enter, please visit www.qhotels.co.uk/weddings/wedding-speech-awards. The deadline for entries is August 28.



Paul Gallon

Village SOS offers help to local projects

FREE one-to-one support is being offered to community projects across Cheshire and Warrington by Village SOS – a £1.4 million national campaign funded by the Big Lottery Fund.

More than 40 projects have received advice and support from the scheme since it was re-launched six months ago.

Accessing the expertise of a network of organisations across the UK, as well as a network of trained Village SOS mentors, these projects are the first to engage with the Village SOS campaign and hopefully will act as inspiration to get more involved.

A community radio station, a small friendship circle/lunch club that provide a vital social facility for isolated residents, a large scale multi functioning community centre which offer a full range of services under one roof, and a heritage project which looks to create new employment locally are amongst the first projects receiving support.

Any project in a rural community of fewer than 10,000 residents that provides a service could be eligible for support and they are being encouraged to get in touch to find out more.

Mark Reading of Cheshire Community Action said: "It's been a good start nationally and it is great to hear about such a wide variety of projects are getting involved with the campaign – I'm certain that projects across Cheshire and Warrington will benefit from learning from their experiences. Projects can receive support from us now to help them develop and progress their own plan of support, setting out the next steps to help them to become more sustainable. It's about planning for the future and helping projects to consider what next? Please sign up for support and we'll look forward to working with you."

One of the resources available to help projects to flourish is access to the Village SOS Mentors, a team of volunteers who have been trained to work with projects receiving support.

Ivan Annibal, who leads on mentor training, said: "These individuals will work with the local organisation supporting a project and are a network of experts who are able to share their knowledge and expertise for free as part of any Village SOS support plan. They are volunteers who have a range of experience from having been involved with their own community project, or those who have run their own business, or are academics, or accredited social enterprise experts."

To sign up for support, or to find out more about becoming a mentor, visit www.villagesos.org.uk or call Chris Cowcher on 01285 653477.

*For more information, contact Chris Cowcher on 01285 653477 ext 215.

New Product

AG
Inspiring Spaces

Slate
Killyleagh
Cashel New
Burren

50mm
4 colours
£13.96m²

COUNTRY COBBLE

Plaspave

10mm
All colours
£8.95m²

PLASPAVE 50 BLOCK PAVING

Charcoal Buff Red Trad. Brindle

Patio Picks
14.72m² including
46 pieces
in four sizes
Superb quality
6 colours

Price Hold
From **£242.99**
per pack

CALIBRATED PREMIUM SANDSTONE

Block Paving
50mm, 6 colours
£13.99m²

1.5m Circle
50mm, 6 colours
£119.95m²

Tegula Trio
50mm, 8 colours
£14.99m²

Tegula Setta
50mm, 8 colours
£19.95m²

TEGULA

Only £1.44
per meter

38mm x 125mm
First Grade Dual Sided
Treated Decking

DECKING

FSC
The mark of responsible forestry

Prices from
£28.35
each

VANESSA

FSC
The mark of responsible forestry

£43.95
each

1800mm x 1800mm

VENEZIA

FSC
The mark of responsible forestry

£36.74
each

1800mm x 1800mm

SAN REMO

Artificial Grass
Beautiful Grass whatever the weather

NOW AVAILABLE

barbies
barbecue fuel

5kg bag
£3.98
each

New in stock

- Easy to light with firelighters or kindling
- Clean to handle
- 100% renewable British wood chunks
- No additives
- Made in the UK
- Long cooking time
- The perfect eco-fuel for family bbqs

Bella Rosa Planter

£24.99
each

Valencia Arbour

£115.00
each

Pink Croxden Gravel
14mm, 20mm, 5-20mm
Jumbo bag
£36.50
each



Blue Slate
Jumbo bag
£45.00
each



Golden Gravel
10mm, 20mm
Jumbo bag
£42.50
each



Limestone
10mm and 20mm
Jumbo bag
£35.00
each



Landscaping Bark **£37.50**
Jumbo bag each

Lawn Mix Top Soil **£24.99**
Jumbo bag each

Washed Sand **£29.50**
Jumbo bag each

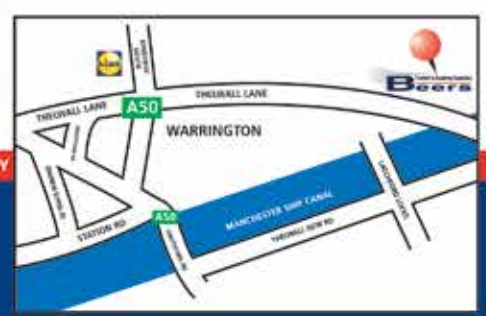
- We Supply • Postfix concrete • Timber Treated**
- Fence Posts • Rock Face/Plain
 - Concrete Internal & End Slotted Posts
 - Concrete Base Panels and much more

Lockside, Thelwall Lane,
Warrington WA4 1PD
(next to Latchford Locks)
01925 634283

BRANCHES AT:
LIVERPOOL • BROMBOROUGH • HESWALL • HOYLAKES • TRANMERE

www.beersltd.co.uk

Opening Hours
Monday - Friday 7.30am to 5.00pm Saturday 8.00am to 12.30pm



Pictures for illustration purposes PRICES EXCLUDE VAT

EXCHANGE YOUR GOLD AND SILVER FOR INSTANT CASH



All items of jewellery accepted

Did you know...?

We accept silver jewellery, cutlery, tea sets, spoons, cigarette cases, candlesticks, trophies, trays, medals, coins and pocket watches.

**ROLEX WATCHES WANTED!
ANY CONDITION**

Open: Tuesday-Saturday: 10am - 5.30pm

1 London Road, Stockton Heath
(First floor entrance on Fairfield Road)

07544 486 621



**GOLD & SILVER
BULLION DEALER**

Constipated? Bloating? Sluggish?



CHESHIRE
Natural
Health

Colonic Hydrotherapy

can help

Spring Clean your body from the inside out!

Cheshire Natural Health, Beehive House, Tarporley Road, Stretton, Warrington

www.cheshirenaturalhealth.co.uk Tel: 01925 730123

SARACENS HEAD



381 Wilderspool Causeway · Warrington · WA4 6RS · ☎ 01925 452335

HEADS UP! MUSIC FESTIVAL

Saturday 25th July 3pm - 11pm FREE ENTRY

Live bands throughout the day including headliners - Dientes

and also Vala • Ugly Radio
Electric Mafia • Never Too Late
& Kieran Gallimore



BBQ during the day
Hot Pot in the evening

DJ all day • Outside bar



Saracens-Head



SaracensHeadSH

BE YOURSELF

- Grass Cutting
- Hedge Trimming & Shaping
- Conifers Topped & Shaped
- Weeding
- Paths & Patio Jet Clean
- Fence Treatment & Repair
- Small Landscaping
- Garden Clearance and of course 'Odd Jobs'



hazeldine's
home and garden
maintenance

t: 01925 742830

m: 07899 066204

hazeldinehomeandgarden@gmail.com

www.hazeldinehomeandgarden.co.uk

WELCOME TO THE IDEAL BUILDING COMPANY



Our mission is to deliver a high standard of building work at competitive prices and give complete client satisfaction every time.

Our services include: Extensions & Conversions, Complete Refurbishments, Loft Conversions, Structural Works, Homes Offices, Kitchen & Bathroom fittings, Electrical, Heating and Plumbing works, Full Plan & Design Service and General Building work.

For a FREE consultation please call

01925 730888

Urban Building Projects Ltd.

410 Europa Boulevard, Gemini Business Park, Warrington, Cheshire, WA5 7TR

Email: info@urbanbuildingprojects.co.uk Web: www.urbanbuildingprojects.co.uk



DOVE ARCHITECTURE

Local RIBA Architects & Interior Designers
call 07885 715 801 for a free consultation
planning applications - house extensions - plans drawn



info@dovearchitecture.co.uk www.dovearchitecture.co.uk

Early Birds Swimming Club

at Broomfields Leisure Centre

Small, friendly adult swimming group looking for a few new members

Mixed abilities and ages welcome

Monday to Friday 7.45am to 8.30am

£75 per quarter year

For more information or to book a free trial session contact:



Julie Mainwaring 07942 141614

or Bill Clay 01925 266906

All set for World's largest Disability Awareness Day

THE world's largest 'not for profit' voluntary-led disability exhibition, Disability Awareness Day (DAD) held annually in a huge tented village within the grounds of Walton Hall Gardens in Warrington will take place on Sunday July 12.

Visitors to the show will find over 250 exhibitors, equipment suppliers, transport, holidays, leisure, employment, support groups and services. There will also be a Sports Zone including Scuba diving, an Arts Marquee and family entertainment.

The show opens at 10am and finishes at 5pm, and entry is FREE

with a FREE programme.

The week leading up to DAD is always full of exciting and interesting events, starting with the popular DAD Launch in Warrington town centre on Saturday July 4.

For the full listing of events check out the website www.disabilityawarenessday.org.uk/



Early Birds Swimming Club

The Early Birds Swimming Club was started 30 years ago by a small group of people who wanted to swim early in the mornings in a quiet pool.

They took a private booking slot from 7.45 – 8.30am Monday to Friday at Broomfields Leisure Centre, which they still use today.

The club keeps limited membership numbers to prevent overcrowding but are pleased to announce that there are openings now for new members.

The club has a relaxed, quiet atmosphere and is just about swimming, maintaining health and fitness and making new friends with like minded people.

Getting to the pool before the rush hour traffic gets under way and being able to swim before the working day begins are just 2 benefits. They also have retired members who find it a great way to start their day.

The health benefits of swimming are well known. A report commissioned by the Academy of Medical Royal Collages concluded that 30 minutes swimming or other physical activity per day could reduce the chances on contracting serious diseases by 25 – 30%.

NHS Choices recommends that to stay motivated – make it a habit. Join a club and set aside time every week to swim.

For a free taster session please call Julie Mainwaring 07942 141614 or Bill Clay 01925 266906.

DISABILITY AWARENESS DAY

SUNDAY 12 JULY 2015

WALTON GARDENS, WARRINGTON
Find us on & @WDPComms

"Promoting Independence throughout Life and Work"

DAD is supported by a week of complementary events

OVER 250 EXHIBITORS

- FAMILY ENTERTAINMENT
- SUPPORT GROUPS & SERVICES
- EQUIPMENT SUPPLIERS, HOLIDAYS & TRANSPORT
- SPORTS ZONE, ARTS MARQUEE, LIVE BANDS, DANCE & DRAMA

For further details call or visit: 01925 240064 www.disabilityawarenessday.org.uk

Organised by

Principal Sponsor

What's on in the villages

July 4
STOCKTON HEATH WALKING DAY

July 14
STOCKTON HEATH PARISH COUNCIL
Sandy Lane Centre, Stockton Heath. 7.30pm

July 16
GRAPPENHALL & THELWALL PARISH COUNCIL
Council Offices, Bellhouse Lane. 7.30pm

July 18
Stretton Walking Day

July 21
APPLETON PARISH COUNCIL
Parish Hall, Dudlow Green Road. 7.30pm

Every Sunday
GRAPPENHALL HEYS WALLED GARDEN
Wetherwin Avenue, Grappenhall Heys, WA4 3DS.
Café open from 12 noon-4pm serving teas, coffee, home-made cakes and savouries.

Every Monday
ST MARY MAGDALENE MONDAY CLUB
St Mary Magdalene Church, Appleton 1.30pm

COUNTRY DANCING CLUB
St Thomas' Primary School, Parkgate Road, Stockton Heath. 8-10pm. Details: 01925 262356

BRIDGE CLUB
Belong Warrington, Loushers Lane 7.30pm. Details: 01925 262534

LADIES' FRIENDSHIP CLUB
The Quays Community Centre, Thelwall New Road, Thelwall.
8pm. Details: 01925 264099

HIGH LEGH RUBBER BRIDGE CLUB
Village Hall, 7-10pm. Details: Audrey Greaves 0161 904 0120

Every second Monday
PARK (APPLETON) WI
Appleton Parish Hall, Dudlow Green Road. 7.30pm

Second and fourth Monday
WARRINGTON ART GROUP
Bellhouse Community Centre, Bellhouse Lane, Grappenhall. 7-9pm.

Every third Monday
NATIONAL VEGETABLE SOCIETY
Cheshire District meeting
Grappenhall Ex-Servicemen's Club, Chester Road, Grappenhall.
8pm. Details: 01925 265773.

Every fourth Monday
MARLFIELD WI
Grappenhall Community Library, Albert Road, Grappenhall. 7.30pm

Every Tuesday
COFFEE MORNING
St Cross Church, Appleton Thorn. All welcome.
10am-12 noon

PHOTOGRAPHIC SOCIETY
Quays Community Centre,
Thelwall New Road, Thelwall. 7.30pm.
Contact: 01925 757582.

COFFEE MORNING
Appleton Independent Methodist Church
Appleton Parish Hall, 10am-12 noon

Every second Tuesday
STOCKTON HEATH LIONS CLUB
London Bridge Inn, 8pm
Contact: Grahamclisse58@outlook.com. Tel 01925 262669

Every Wednesday
APPLETON HALL BADMINTON CLUB
September - April at Hall Drive, Appleton. 7.30-10pm. Details: 01925 262356

Every first Wednesday
WALTON WI
St John's Church Community Hall. 7.30pm
Details: 01925 604384

STOCKTON HEATH PROBUS CLUB
Warrington Sports Club, Walton Lea Road, Higher Walton. Details: 01925 268540

Every third Wednesday
HIGHER WALTON WI, St John's Community Hall,
7.45pm. Details 01925 262001.

Every fourth Wednesday
ALZHEIMER'S SOCIETY
Support Group, Brampton Lodge Day Centre, Bridge Lane, Appleton. 6.30-8.30pm

Every Thursday
THE SILVER QUAYS Senior Citizen's Club
The Quays Community Centre, Thelwall New Road, Thelwall. Details: 01925 753474.

BRIDGE CLUB
Grappenhall Village Sports Club
Stockton Lane. 7.30pm. Details 01928 712233

Every second Thursday
STRETTON WI
Appleton Parish Hall, Dudlow Green Road. 2.30pm.

GRAPPENHALL PROBUS CLUB
Grappenhall Community Centre, Bellhouse Lane, 10am. Details: 01925 264427.

Every third Thursday
NORTH EAST CHESHIRE FLOWER CLUB
Warrington Golf Club, London Road, Appleton. WA4 5HR 2pm Details: 01925 740419

GRAPPENHALL WI
Grappenhall Community Centre, Bellhouse Lane 2.15pm

Every Friday
APPLETOTS TODDLER GROUP
Appleton Parish Hall, Dudlow Green Road.
9.45-11.30am. Details: 01925 268153.

To list your event call **Village Life** on
01925 623632



Rare additions arrive at Cycle Museum

TWO rare additions have been added to the 150 strong collection of bicycles at the Walton Hall Cycle Museum in Warrington.

Museum Curator Paul Adams had been searching for the rare bicycles for more than 10 years.

Now the 1893 Crypto Bantamette Ladies bicycle, one of only two known in the world, and the rare 1895 solid tyred Hillman Herbert and Cooper Gentleman's Premier bicycle, are now taking pride of place at the museum inside Walton Hall and Gardens.

Paul, aged 73, admits his bicycle

collection is an obsession which started in his childhood when he developed an interest in vintage cars – before moving on to bicycles which were “more affordable!”

“I've been after these bikes for more than 10 years and I am delighted they are now part of the collection.”

The museum is open every weekend and admission is free.



Thelwall Upholstery

FOR THE MOST COMPETITIVE RATES IN THE AREA
49 Knutsford Road, Grappenhall WA4 2NR
Call Sean on: 01925 604770 or mobile: 07799 228080
www.upholsterywarrington.co.uk

For all your upholstery needs

SPECIALISTS IN:

- Re-filling Cushions • Re-springing • Full Re-upholster
- Dining Furniture • Headboards

A wide range of sample books to choose from
All at competitive rates

PHONE FOR YOUR FREE ESTIMATES

The co-operative funeralcare

We are available, 24 hours a day, 7 days a week.

- Pre-paid Funeral Plans
- Memorial Masonry

Stockton Heath 63 London Road 01925 262 000	Warrington Bewsey Road 01925 445 555
---	--

www.co-operativefuneralcare.co.uk

Grappenhall DENTAL PRACTICE

High quality care at reasonable prices

Independent private practice
Private dentistry at NHS prices (conditions apply)

Now taking new clients due to expansion after 8 successful years

Easy parking/groundfloor easy access including wheelchair

State of the art equipment / highest standards of cleanliness / cross infection control

Emergencies seen same day / no waiting lists
Late night opening Tuesdays until 8pm

Dr Andrew Brown and associates welcome new patients

Tel: 01925 210977 or 01925 481341
148 Knutsford Road, Grappenhall, Warrington WA4 2PW
grappenhaldentalpractice@virginmedia.com
www.dentistswarrington.co.uk

Parish council summer player schemes

APPLETON Parish Council are funding four weeks of Summer playschemes for primary school children during the summer holidays.

There will be a two week summer playscheme, Monday to Friday mornings at Cobbs school, 10-12am, drop in and the charge is £2 per child. The playscheme will run at Cobbs school from Monday July 20 to Friday July 24 and then Monday July 27 to Friday July 31.

There is then a two week summer playscheme, Monday to Friday mornings at Appleton Parish Hall, 10-12am, drop in and the charge is £2 per child.

The playscheme will run at Appleton Parish Hall from Monday August 3 to Friday August 7 and then Monday, August 10 to Friday August 14.

For more details call 01925 268153 or email clerk@appletonpc.org.uk

Village festivals

FOR the best coverage of local village festivals, including Bawming the Thorn at Appleton Thorn, Thelwall Rose Queen, Grappenhall and Stockton Heath Walking Day check out the coverage on warrington-worldwide.co.uk

Picture displays will also be in next month's issue of **Village Life**.



CLASSIFIEDS Call FREE 0800 955 5247 to advertise

ACCOUNTANCY & BOOKKEEPING

arleys
freelance and contractor accounting
keeping it simple...
01925 598499
www.arleys.co.uk

BATHROOMS

The Bathroom Refurbishment Co.
We can create the Bathroom of your dreams
One Warrington based Company
One Job from start to finish
Unique 3D virtual CAD design system
Please visit our website
www.bathroomrefurbishment.co.uk
Please Ring Wayne
01925 826 828 or 07976 574 828

BUSINESS OPPORTUNITY

LOOKING TO EARN EXTRA INCOME from full or part-time work? Start your own part time business with a major PLC. Call 01928 710 134 for more details.

CARPET CLEANING

SIMPLY THE BEST CARPET CLEAN YOU WILL ever have. Cleaners UK Ltd. Est 27 yrs. Have your carpets & sofas beautifully deep cleaned leaving them fresh smelling & colour restored. Latest & best methods. Dry/steam. Leather cleaning, oriental rug specialist. Professional, reliable & affordable. For more info call Neil Riley on 01925 264989/07831 336060 www.cleaners-uk.net

CARPETS, CURTAINS & INTERIORS

CURTAINS AND VALANCES made to measure to your own choice of fabric. Home visits to advise, measure and estimate. Free fitting. Curtain alterations also undertaken. Tel: Catherine Langley on 01925 604400. www.catherine.makescurtains.co.uk

CAR SALES

PARKVIEW CAR SALES
We buy and sell
QUALITY CARS
Best price paid
Telephone Peter on
01925 575737 / 07957 545479
23 Padgate Lane
Padgate, Warrington
Cheshire, WA1 3RS

CHIMNEY SWEEP

SUPERIOR CHIMNEY SWEEPING by a local, family run business. Choose Clean Sweep, www.cheshirechimneysweep.com for a professional, reliable and friendly service. NACS registered/qualified. Tel Stephen 01928718802 or 07915467605.

CLEANING SERVICES

arleys angels
• De-cluttering/re-organising
• Presenting your home for Sale
• Moving house assistance
• Spring/After building work cleans
01925 266834
... because you're worth it!

CLEANING & IRONING SERVICES

SWISH HOUSEKEEPING - your local cleaning company. Domestic and commercial cleaning at competitive rates. Also ironing services. For a FREE quotation call Angela on 07891 669502 or Adrienn on 07581 079705 or E: info@swishhousekeeping.co.uk www.swishhousekeeping.co.uk

DOCUMENT STORAGE

FileRoom
Box storage from less than a penny a day
Collection & delivery service
01925 732752
mail@thefileroom.co.uk
www.thefileroom.co.uk

ELECTRICAL CONTRACTORS

TRUST PROPERTY ELECTRICAL SERVICES. NICEIC Part P Approved Contractor. All Electrical work undertaken. Inspection & testing & PAT testing. All work certified & guaranteed. Call Tim on 07754409906 or 01925 601055

GARDENING SERVICES

JP LANDSCAPES
- Block Paving - Tarmac
- Slabbing - Driveways
- Patios - Graveling
- Brickwork - Steps
- Fencing - Decking
- Power washing - Turfing
- Driveway Repairs
For a FREE no obligation quote please call
0800 858 9961 or 01925 393 188
or visit john@jp.landscapes or
07818 385 387 / jplandscapes54@gmail.com
Vale Avenue, Warrington, WA2 8AY

LAWN DRAINAGE. Improve the drainage of your lawn in a day. No digging, no trenches, no reinstatement. Call Bob Harper 01925 266852. 07952608701.

GATES

Village Gates
Manufacturers and installers of quality timber gates
villagegates.co.uk
For free quotes and advice call
01925 552322
New Workshop and Showroom at:
Ba Trident Business Park, WA3 6AX

HOME SERVICES

ATLAS
Your friendly local independent
WASP CONTROL
PEST CONTROL CHIMNEY SWEEPING
Affordable, professional, guaranteed service.
Fully insured, fixed prices - no surprises once on site!
Discrete vehicles, no embarrassing signs
07999 487 925 / 01925 445 222
www.atlas4u.co.uk

HYPNOTHERAPY

MICHAEL MAHONEY clinical hypnotherapist for IBS, Stress, Anxiety and many other problems. Medical Research project experience, BUPA Service Provider. For FREE information sheet please email TimelineServices@aol.com or ring 01925 658322 www.healthyaudio.com

KITCHENS

QUALITY KITCHENS SUPPLIED AND FITTED by local experienced fitters. No job too small. If you have bought a kitchen we can fit it - or we can supply and fit full kitchen units including joinery work, plastering, electrics etc. All work is guaranteed. B&L Kitchen Installations. M 07935 267200 or 01925 451883 after 6pm.

PAYROLL

WHY TRY TO BE A PAYE EXPERT? Watkinson Black can provide a cost effective payroll service, releasing you to concentrate on your business. For further details please phone: 01925 413210 or e-mail: info@warringtonaccountants.co.uk

TUITION

PRIMARY TUITION: EXPERIENCED PRIMARY School Teacher available for private tuition. Numeracy and Literacy. Available after School and weekends. Call 01925 268627 or Mobile: 07843 607394

WINDOWS & GLAZING

NEIL COPELAND WINDOWS & Conservatories Ltd. Specialist in uPVC double glazing windows, doors, porches, conservatories, also fascias and guttering. FENSA registered. All work guaranteed. Tel: 01925 756138 / 07961 361550.

SP GLAZING for all your glazing requirements, double glazed units including failed and misted units, broke windows, mirror fixing. Kite marked to B/S. Time served glazier with over 30 years experience. For a friendly no obligation quote tel Sam Pendlebury on 01942 671859. Mob 07919 660296.

twentyfourseven
design & print ltd
info@247print.net • 01925 240247
The New Media Centre • Old Road
Warrington • WA4 1AT
the NEW MEDIA centre

CANVAS COLOUR PRINTS 500mm x 500mm £24.70 +VAT
50 WEDDING INVITATIONS FULL COLOUR £24.70 +VAT
100 BUSINESS CARDS £2.47 +VAT
50 A3 POSTERS £24.70 +VAT
50 A2 COLOUR POSTER £2.47 +VAT
PRINT PROBLEMS SOLVED!
BANNERS • STICKERS • MAGAZINES
FLYERS • POSTERS
OFFICE STATIONERY
CUSTOM PRINTS
FOLDERS • CARDS • SIGNAGE

To advertise in the classified section from £6+vat per month Call 0800 955 5247



**It's our 10th Birthday this year...
come and help us celebrate**



MasterPartner

authentic kitchen co
Luxury Individual Kitchens & Bedrooms

- High quality, contemporary and traditional kitchen designs
- Designed to your budget and tastes
- Customer satisfaction is guaranteed

- Inspirational FREE plan & design
- Fully qualified professionals
- Full project management
- 2 inspiring, Cheshire based, showrooms

Unit B Stanley Estate, Stanley Road
Knutsford WA16 0EG
T: 01565 631 869

within Smart Furnishings, Chapel Lane,
Stockton Heath, Warrington WA4 6LL
T: 01925 212 200

www.authentickitchenco.co.uk

LIVING • DINING • SLEEPING • FLOORING • OCCASIONAL



Easy access stairlift to furniture
FREE Parking



Smart
FURNISHINGS

**STOCKTON HEATH'S
very own
HOME FURNISHINGS
DEPARTMENT STORE**
modern & contemporary...



Chapel Lane, Stockton Heath,
Warrington WA4 6LL

T: 01925 267518

www.smart-furnishings.co.uk

OPEN: Mon, Tues, Weds & Fri 9am - 5.30pm. Thurs & Sat 9am - 5pm

**SOFAS • SUITES • CHAIRS • DINING FURNITURE
BEDS • WARDROBES • CURTAINS
CARPETS, VINYL & LAMINATES • RUGS
OCCASIONALS • MIRRORS**

