



**01925 639 354**  
11 Old Market Place,  
Warrington WA1 1QB  
[www.boutiquehoco.co.uk](http://www.boutiquehoco.co.uk)

# warrington n

# w rldwide

Issue No. 135    January 2011    FREE EVERY MONTH

## Tom rocks!



**need family law advice?**  
call your local legal experts



Free legal clinic  
mondays 5pm-7pm

**01925 230000**  
[www.ddlaw.co.uk](http://www.ddlaw.co.uk)

Annual General Report 2010  
**Opening Doors**



**Warrington Disability Partnership**  
12 Page Annual Report

**HARRY'S TAXIS 411111**  
NOW WITH RING BACK TEXT BACK & BOOK ONLINE



**Tamarin**  
*The Authentic Taste of Thailand*

Open Daily:  
Lunchtimes 11.30am - 2.30pm  
Sunday Buffet 12 - 3.30pm  
Evenings 6pm - 11pm

A warm welcome awaits you  
VICTORIA BUILDINGS  
LONDON RD. STOCKTON HEATH  
**TEL: 01925 606168**



# Editor's Comment



## Editor

Gary Skentelbery

## Production

Paul Walker

## Advertising

James Balme  
Tony Record  
Freephone  
0800 955 5247

## Editorial

01925 623631

## Email

info@warrington-  
worldwide.co.uk

## Websites

www.culchethlife.com  
www.frodshamlife.co.uk  
www.lymmlife.co.uk  
www.warrington.tv  
www.warrington-  
worldwide.co.uk

## Address

New Media Centre  
Old Road Warrington  
WA4 1AT

*warrington-worldwide* is  
published monthly by  
Orbit News Ltd.

The contents of this magazine  
are fully protected by copyright  
and nothing may be reprinted  
or reproduced without prior  
permission of the publishers.

The publishers are not liable for  
any statement made or opinion  
expressed by third parties in this  
publication.

Printed by TwentyFourSeven

**Have you got a story? Send your news items and pictures to  
info@warrington-worldwide.co.uk or phone 01925 623631**

**THE by-election result at Bewsey and Whitecross, where Labour swept back to power at the expense of the Lib Dems with a more than 30 per cent swing, was a sharp wake up call to the coalition running the town hall.**

With the many unpopular decisions being made both nationally and locally by a Lib Dem-Tory coalition it would be a brave person who would bet against a return to Labour control in the forthcoming May elections.

The Lib Dem Tory coalition at the town hall now has a majority of just one!

Politicians always claim they listen to the people - well the people have voted and are obviously not very pleased!

What with job evaluations, redundancies, cost cutting and reduction in services, it really is difficult to feel positive about things locally and nationally - but I will give it a go as there are still some things to feel positive about in Warrington!

We are on the dawn of a new Super League season and Warrington Wolves should once again be up there challenging for honours and hopefully building on the successes of the past couple of years

With the current squad and the additions of Aussie aces Bret Hodgson and Joel Monaghan the Wolves should certainly be a force to be reckoned with.

Hopefully the Wolves can give us plenty to cheer about!

We also have the fantastic Orford Park project looming on the horizon which should provide a major boost to the town as our 2012 Olympic legacy.

Building works are now well advanced off Winwick Road and this new community sports village will provide top class facilities in one of Warrington's most deprived areas.

So there is still plenty to be positive about in the New Year.

I would like to take this opportunity of wishing all our readers and advertisers a happy, healthy and hopefully prosperous New Year!

# Shelly's

**Happy New Year to all our customers  
from Michele  
and the team**

Open for breakfast, lunch,  
afternoon tea and dinners

**8 Bold Street, Warrington  
Tel 01925 654000**

[www.shellysrestaurant.co.uk](http://www.shellysrestaurant.co.uk)



**PRIESTLEY**  
◆◆◆ COLLEGE ◆◆◆

**OPEN EVENING**

**THURSDAY 27 JANUARY 2011**

Principal's Presentation  
6.15pm & 7.15pm

**6pm - 8pm**

**SUCCESS IS INFECTIOUS  
AT PRIESTLEY**

**OUTSTANDING PASS RATES  
FOR 6 YEARS RUNNING**

**DON'T MISS  
YOUR CHANCE TO CATCH  
THE FEVER**

★★★★★★★★★  
**THE INTERNATIONAL BACCALAUREATE**

Presentation  
6.45pm

**APPLICATION DEADLINE  
FOR SEPTEMBER 2011 ENTRY  
15 FEBRUARY 2011**

LOUSHERS LANE, WARRINGTON  
01925 415415

For the latest information  
[www.priestley.ac.uk](http://www.priestley.ac.uk)



## Agency appoint new chief



FOLLOWING the retirement of Steven Broomhead, Mark Hughes, the Agency's Acting Chief Executive, has been formally confirmed as Chief Executive.

Mark has successfully headed the Agency's Economic Development Directorate for over five years and is currently leading the Agency's Transition and Closure process.

Prior to joining the Agency, he spent ten years in private sector consulting.

The Transition and Closure of the Agency is a complex and challenging task and it is important that the Agency manages this in an orderly way.

This includes managing the Agency's portfolio of projects and contracts to ensure the maximum benefit for the region now and in the future.

Mark's extensive knowledge of the Agency and his experience in managing significant change programmes makes him ideally placed to lead the Agency through this period.

# Tom rocks!

**STUDENT Tom Jennings is not your average teenager - even if he does have dreams of being a rock star!**

Even though he is not old enough to vote he has already fought an election campaign, winning the right to be a voice for young people in Warrington South as a member of the Youth Parliament (MYP).

More than 10,000 young people from Warrington schools cast their votes and chose 16-year-old Tom to represent them.

Now Tom from Grappenhall, Warrington, who has a passion for politics, would love the opportunity to be an MP one day.

He already sits on the Impact Youth Council working alongside Warrington Borough Council on campaigns that affect young people and is actively involved in a Youth Café project for Warrington town centre.

Tom, a student at Priestley College, is also a volunteer at the Peace Centre, where he helps out two nights a week and sees the town centre Youth Café as a great opportunity for the town to "have two great youth clubs."

He says the town centre has no facilities for young people to use of an evening, with many "hanging out" around the skittles.

"There are at least 100 young people who hang out in the town centre with nowhere to go. We sit and play music and chat and chill out but

could do with a venue to meet up in," he said.

"I realise there are a small minority of young people who give us all a bad name - but the vast majority of us are just interested in meeting up, playing music and seeing our mates."

### Campaign

He is also actively involved in the campaign to save Walton Hall and Gardens, another venue popular with young people.

"My family come from the public sector, with my parents working as nurses and my sister as a teacher which has helped develop my interest in politics," added Tom.

Having recently formed a rock band with a group of friends, Tom is already following in the footsteps of a recent Prime Minister and if he does achieve his dream of being an MP one day - who knows what the future could hold?



**Whites Sports**  
**Warrington Market**  
 1901 - 2001 - 100 YEARS OF EXCELLENCE

*Specialists in:* Darts, Bowls, Snooker, Air Guns, Walking Sticks, Rugby, Cricket, Football, Warrington Town Replica Jerseys  
 On Sale Now

**GIFT VOUCHERS AVAILABLE**

Telephone/Fax:  
**01925 631531**

Tapefox Ltd.


Quality Kitchens & Bedrooms  
 FAMILY BUSINESS EST. 1982

**Let us turn your dreams into reality with one of our beautiful craftsman built kitchens**

- Petworth In Frame kitchen now on display in our Culcheth showroom
- COMPREHENSIVE Range of High Gloss Colours
- Blum Soft Closed Doors/Drawers on ALL Kitchens
- All our Kitchens and Bedrooms are manufactured on the premises
- Free plan, Design and Quotation • Supreme customer service, quality and value
- Kitchens and Bedrooms to suit all budgets

**Culcheth Open: Tuesday - Friday 10am - 5pm Saturday 10am - 4pm**  
**St Helens Open: Monday - Thursday 8.30am - 4pm Friday 8.30am - 3pm Saturday 10am - 1pm**

14 Church Lane Culcheth 01925 766646 or Unit 11b . Brindley Road (off Reginald Road) St Helens 01744 811687



**HEALTHY AUDIO LIMITED**  
At the Heart of Wellbeing

Download or Hard Copy Self Help Audio Programmes include:

- Irritable Bowel
- Emotional Recovery
- Smoking Cessation
- Stress / Anxiety
- Chronic Pain
- Emotional Recover from Breast Cancer
- Insomnia and much more

or write to:  
**Guardian Medical Centre**  
Guardian Street  
Warrington

For appointments or a **FREE** information sheet telephone  
**01925 658322**  
www.healthyaudio.com

Hello and welcome to my monthly column . . .

# Hypnotes

by Michael Mahoney

## In one year and out the other

Think to yourself, what is the one thing, that above all others, you would like to accomplish in the coming year. Is it realistic?

Most people tend to think in superlatives. Our goals aspire to the 'most' that we could ever be, but we may not know what steps are needed to even begin to accomplish those goals.

So try this, take out a piece of paper. Quickly jot down what you would like to accomplish in your life. Don't edit as you write, don't make corrections, just write. Then put it away for a day or two.

When you come back to it, notice if there are any trends running through your entries.

You may find your list contains an item that is both a want and a need; but many times, what we need to accomplish, is not what we want to do. And that is where sabotage for New Year's resolutions comes in.

Oscar Wilde humorously observed that "A New Year's resolution is something that goes in one year and out the other."

The reasons for failure could possibly be that because the task has not ever been accomplished before, it

cannot ever be done, or past failures determine future failures.

In the 'back of your mind' you feel the need to improve, but already have failed because you expect to fail.

Look at your list, and prioritize. Once you have number one, then put the others on the list away for the time being.

Now take your top goal, and break it down into doable steps.

If you have difficulty doing this, I can help. The subconscious mind can be given specific and realistic suggestions and visual imagery that can help guide you to your goal.

You can train your subconscious mind to rethink past failures or the inability to begin, especially with those goals you know you need to achieve, but are reluctant to do so, because of unpleasant aspects to that achievement.

The focus on negative aspects needed to achieve your goals, rather than the positive aspects can be a big sabotage at the outset. Many people before you have overcome this, by taking small objectives and once accomplished adding new ones as the next steps. This gives you an

Michael Mahoney is a Clinical Hypnotherapist. He has research, and patient trials experience. He is a member of the Hypnotherapy Association, an associate of the Primary Care Society for Gastroenterology, he is a non NHS service provider and Private Health Service Provider

Tel: 01925-658322 email [timelineservices@aol.com](mailto:timelineservices@aol.com) [www.michaelmahoneyhypnotherapist.com](http://www.michaelmahoneyhypnotherapist.com)



opportunity to build a small success upon another success as a plan to meeting your ultimate goal.

For example, you may want to be better organized, but the overall task is so overwhelming, that you give up. But if you visualize one small section being as you want it, then do it, you can do this over and over again, and achieve your bigger goal. This can apply to almost any goal that deep down you really want to accomplish.

There are other factors involved – hope and belief. You can hope for something all day long, but unless you really believe you can achieve it, all the hoping in the world won't bring it to you. Once you put a belief system into place, success in achieving your goals can be realized. Many of my audio programs of hypnotherapy can help you with your goals, or call my office for an appointment for personal care and guidance.

**PREMIER SALE**  
**+NO VAT INCREASE**  
ON JAN/FEB ORDERS

Over 60 exquisite kitchens on display  
From £5,000 to £10,000+

FREE Survey  
3D Walk Through Plans  
Bring your ideas for us on the spot quotation

*Buy Direct*

**Raddon Court Warehouse**

## Warrington's Only Bespoke Kitchen Company

DESIGNED & HAND BUILT FOR YOU! - EST. OVER 40 YEARS  
HUNDREDS OF RETURNING CUSTOMERS CAN'T BE WRONG!

**New Lucida Block**



**SAVING YOU up to 20%**

**New Delaware Kitchen**



**IVORY**

**New range of BATHROOMS**



**BUSHBOARD**  
the latest in Paneling.

Beautifully fitted bathrooms from start to finish

**2 YEARS INSTALLATION GUARANTEE**

**900 Quad Shower Inc. Tray**

**SALE PRICE £299**

Chrome 900 Shower with pivot door inc. Tray

**SALE PRICE £239**

Range of High Gloss Vanity Units

**SALE PRICE FROM £99**

White High Gloss Back to Wall Unit inc. basin, cistern, seat & pan

**IN STOCK TO TAKE AWAY**

**Cash & Carry Kitchens**

Over 20 on display from \$499 to \$999



**SAVING YOU OVER 50%**

**Bedroom Sale Now On!**



See our New **RAUCH BEDROOMS** Just in **SCAIE FRENCH COLLECTION**

**Wood Burning Fires & Stoves**

From **£259** Over 100 in stock!

Full installation Service by expert fitters!



**900mm Column Built In Fridge Normal Price £339 Now £159**

**VISIT OUR BARGAIN BASEMENT FACTORY OUTLET!**

Huge selection of wall & base units in assorted sizes from \$15 each  
Oak finished glazed doors mainly large sizes- Without glass \$10 each or with leaded glass doors \$15-£20 **DISCOUNTED PRICES FOR BULK QUANTITY.**

**NEW MISTRAL SOLID SURFACE WORKTOPS**

**20% OFF**

Choice of colours OVER 500 TOP NAME WORKTOPS IN STOCK!

**AXION** **ARTIS** **EUROLITE** **smartstone**

**EUROLITE BREAKFAST BARS** Available in 1.5m, £100 **1.8m prices ALSO IN STOCK**

From **\$59.00**

Replacement doors & handles

**SAVE OVER 20%**



**01925 633 291**  
Fax: 01925 417 585

**Public and Trade Welcome**

The Old Tannery Building, Manor Ind Estate  
Lower Wash Lane Warrington WA4 1PL  
Off Grange Avenue, Latchford. Next to ATS.

**www.raddoncourt.com**

**OPEN 7 DAYS:**  
Mon-Fri 9am-5.30pm  
Sat 9am-5.30pm  
Sun 10.30am-4.30pm

Closed: 25th Dec 24th, 25th, 26th, 27th, 28th, 29th, 30th, 31st

**RADDON COURT**  
WARRINGTON  
100% SATISFACTION GUARANTEE



the asa  
affiliated club

swim21  
Accredited

**W**  
WARRIORS  
of WARRINGTON

2011

Aged 6 or over and  
love swimming?  
Come and try out for  
the WARRIORS  
SWIMMING CLUB



**WARRIORS**  
of WARRINGTON

# HAPPY NEW YEAR!

**It's now time to get your children active! If they love swimming we'd love to see them join Warriors.**

***The club that turns swimmers into winners***

**Warriors are now recruiting new members aged 6 and upwards. If you've got a child who loves swimming we'd love to meet him or her.**

Every child needs a sport and swimming is the perfect combination of exercise and enjoyment. By joining Warriors your youngsters will become fitter, learn all four strokes, and pick up skills such as tumble turns and diving off blocks.

They can take part in individual or team events and they'll be part of a group of people who are driven to succeed. As we always say at Warriors of Warrington... **We put the WOW into winning!**

We already have over 250 youngsters in the club, with ages ranging from 6 to 18 years. With over 30 years experience of swimming and winning, we know how to get the best out of every child.

**If you think your child would love the thrill of swimming or simply want to know more, please call Warriors Head Coach Darren Ashley on 07717 558369 or contact the Warriors Secretary via [www.swimwarriors.org.uk](http://www.swimwarriors.org.uk)**

# Shannon's recipe for success

**A CATERING student from Warrington Collegiate is tasting success cooking her way to victory in the North Cheshire heat of the prestigious Futurechef competition.**

The competition, organised by the Springboard Charity, is a nationwide culinary programme that helps young people from the ages of 14-16 cook their way through a series of challenges, providing invaluable lessons and insight into the culinary industry.

Shannon won the regional heat of the competition hosted at the collegiate campus after judges James Holden of the Craft Guild of Chefs and Everton Head Chef Gareth Billington tasted a variety of culinary delights prepared by students from across Cheshire.

Shannon, who is only 14 years old and studying for a Diploma in Hospitality at Warrington Collegiate was challenged to create the two course meal to serve four people in under two hours.

Her stunning ballantine of chicken, sundried tomatoes and oregano with a chocolate soufflé for dessert won her the North Cheshire title and a spot at the North West regional final in February next year. The winner of this heat then moves on the National Final in London.

Shannon McCarthy said: "I love cooking and I love food so it's great to win a competition that involves the two things I'm most passionate about.

"It was pretty nerve racking



cooking for these judges but I'm really glad they liked my dishes. I know the challenges in the next leg are going to be tough but I'm really up for it."

Lesley Wilson, Deputy Director of Catering comments: "Shannon is very talented and we are proud her talents shone through in this competition. She has only been at the college for 8

weeks, but has shown such great skills, motivation and maturity that we really wanted to enter her.

"She shows competency and knowledge beyond her years and we're looking forward to nurturing her talent along with that of the other students on the course."

## Death of former Mayor

**THE death has occurred of former Mayor of Warrington Ivy Edwards.**

She died in Warrington Hospital, aged 85, surrounded by members of her family.

Ivy Edwards made history by being the first person to have been Mayor, Deputy Mayor, Mayoress and Deputy Mayoress.

She and her husband, the late Harold Edwards, were the first husband-and-wife team to become Warrington's first citizens. She was awarded the MBE for services to the community.

## School wins top national award

A HIGH school has won a national award from the Specialist Schools and Academies Trust for outstanding achievement in sustainable engineering and manufacturing.

Specialist engineering college Great Sankey High School has won the Rolls-Royce Award in recognition of its achievement in sustainable engineering and manufacturing including innovative teaching methods, extra-curricular activities and examination results.

Students at Great Sankey have many opportunities for success in a well tailored curriculum because the school's specialism continually brings new opportunities and dimensions which extend and enhance provision, according to Ofsted, which has credited the school with an "outstanding" grade.

## 2011 Events at Statham Lodge

### January

#### Tribute Party Nights

Friday 8th Neil Diamond

Saturday 15th The Blues Brothers

3 Course Dinner, Entertainment & Late Bar £24.95 pp

Party Night & Accommodation £45 pp

### March

#### Murder Mystery Evening

Friday 11th March

"What's Your Poison?"

Pre-dinner Drink, 3 Course Dinner & Entertainment £300 pp

Murder Mystery Evening & Accommodation £550 pp

**For enquiries & bookings please contact Reception on 01925 752204**

Warrington Road, Statham, Lymm, Cheshire, WA13 9BP  
W: www.stathamlodge.com



**We go those Extra Miles!!**

# TNM

**COURIERS LIMITED**

**24 Hours - 7 Days a Week - 365 Days a Year**

### SPECIALIST IN URGENT UK SAME DAY DELIVERIES

- ★ Customer Requirements our No. 1 Priority
- ★ International & UK Next Day Service Available
- ★ Multi-Drop Experienced Delivery Drivers
- ★ Contract Work Undertaken
- ★ Quick Response Time, No Cut Off Times
- ★ Reliable, Flexible, Secure Service
- ★ No Job Too Small, No Job Too Big
- ★ Small Vans & 4 Metre Sprinter Vans
- ★ Competitive Rates

eBayer's Welcome



Suite W10, Warrington Business Park  
Long Lane, Warrington, Cheshire WA2 8TX

**FREEPHONE 0808 168 2827 or**

07825 713363 / 07825 713364

Fax: 01925 320063 Email: enquiries@tnmcouriers.com

www.tnmcouriers.com



# Fail to plan – plan to fail!

**WITH the festive season and New Year all around, forgive us for taking a rather food-based approach to our business thinking this month!**

At Icon Business Solutions we support businesses in their growth and spend a lot of time on strategic planning. At first, people think of a plan as one of those long, complex documents required by lenders or corporate bodies. But a strategic plan isn't a business plan. If you imagined the business plan as a book called 'The History of Food', a strategic plan would be one set of recipes taken from that book, to deliver a great meal. A good plan is short, timed, clear about necessary activity, with measures to check our progress.

Many businesses either don't have the time to plan or think planning is for bigger organisations. This is unsafe, as a plan will help keep a company focused, think systematically and sharpen results. How many of us have done the food shopping without a list and had to go back?

A great business owner asks

## 6,000 new jobs

MORE than 6,000 knowledge-based jobs will be created in the Warrington-Halton area through a new public-private joint venture based on the Daresbury Science and Innovation Campus.

The Government has announced the scheme which will confirm the centre's status as a world class centre for scientific research and innovative technology.

Six thousand jobs in the science and innovation sectors could be created over the 20-year period.

themselves these questions regularly:

- My target. Where do I want the business to be in 3 months? In 6? In a year? (To give a light-hearted example, 'I'd like to have been on a four week cruise by this time next year')

- What tasks have I got to do to get there? (To continue the theme – I need to research destinations, dates, cruise lines, costs, how to pay for it, who I'm going with!)

- What measures will I use to test my progress? (Have I been on the cruise? Tick! Did I have a great time? Tick! Have I booked the next one? Tick!)

A successful business leader also constantly assesses their own current capabilities and those of their team, to check whether they are ready and able to achieve their targets. Once the overall strategic plan is in place, it's possible to draft others below it (or get the team to do it, following your example), for issues such as finance, production, HR, marketing strategies, and sales.

Plans also help business leaders use their time wisely, adjust their environment to achieve targets and apply contingencies to reduce the level of failure.

If you plan effectively you can ensure the results are to your expectations or higher.

And to help, six important steps for effective planning: -

- Establish realistic targets to be achieved within a certain time frame.
- List all the things that need to

happen to allow you to achieve your target.

- Prioritise these activities - a flow chart may help.

- Discuss your plan with those involved or affected by it.

- Implement your plan once it has been finalised and you're happy with it

- Monitor and refer back to your plan to ensure you are on track. And if you're interested in a New Year gift, why not ring us on 01925 732104 for a free business health check. We promise a confidential meeting focused entirely on your business - and with no pushy sales talk.

Icon Business Solutions – proud members of the Warrington and Viking chapters of BNI.

If you would be interested in getting more business contact Ewan Sturman at ewan@networkingprofit.co.uk or on 07834 884 237

## Financial Problems?

Commercial or Personal  
For bespoke solutions contact local specialist  
**Roger White, MICM**  
For FREE Initial Advice  
*Strictly Confidential*  
**01925 762497 or 07946 820299**  
 **Campbell Crossley & Davis**  
LICENSED INSOLVENCY PRACTITIONERS

## Business Centre

- General Storage
- Offices To Let
- Internet Traders
- Pic 'N' Pac
- \*Easy In/Out\*

**01925 812700** Manchester Rd, Woolston

## Mint Travel

PRIVATE HIRE

**24/7 Airport Transfers**  
Sports Events - Concerts - Corporate Travel  
Cars or Minibus now available - seating upto 7 people  
**01925 471223 / 07840 503475**  
Read our clients' testimonials on our website  
[www.mint-travel.co.uk](http://www.mint-travel.co.uk)

## carpe diem

WEB DESIGN, DEVELOPMENT & PRINT

Delivering creative web and print solutions since 1999, Carpe Diem have developed strong working relationships with clients of all sizes.

- Website Development
- E-Commerce
- Branding
- Print
- SEO / PPC / Marketing
- SMS / MMS / Email Campaigns
- Hosting
- DVD / Video Production
- Product Photography

UKTV, ASICS, Onitsuka Tiger, Transform Medical Group, Otelo, The Energy Ombudsman, Halle Orchestra, URBS

T: 01925 299 842 60 High Street  
F: 0871 434 5371 Newton-Le-Willows  
E: info@cd-inc.co.uk WA12 9SH  
[www.carpe-diem.co.uk](http://www.carpe-diem.co.uk)

INVESTMENT IN COMPUTER SUPPORT IS THE KEY TO SUCCESSFUL BUSINESS

## pro networks

IT SYSTEMS AND SUPPORT

Comprehensive computer and IT support

- Front-line telephone helpdesk staffed by our skilled engineers
- 24/7 monitoring - remote monitoring of your key systems to enable preventive support
- Shadow copy and backup - to protect important data
- Contracts - tailored to meet individual requirements

Microsoft  
SOLUTION PROVIDER  
DELL PARTNER

Significant investment in our highly select and qualified staff enables us to provide a comprehensive portfolio of support services that remove the headache of keeping your IT systems up and running - leaving you free to get on with growing your business.

**www.pro-networks.co.uk**

Pro Networks Ltd Network House 20, Lees Way, Sandbach, Cheshire CH6 3DS  
T: 01244 944 2000 F: 01244 520240 E: support@pro-networks.co.uk



## LEGENDARY rockers Status Quo thrilled a sell out crowd at Warrington's new look Parr Hall last night.

Despite being on the road for more than 40 years - it was Quo's first ever visit to Warrington as they performed to a 1,100 crowd, the smallest venue on their Quid Pro Quo European tour.

Supported by The Crave, Quo had the Parr Hall rocking to a catalogue of their classic hits in a two hour spectacular, opening the show with their classic anthem Caroline before belting out a lengthy list of favourites including Don't Waste My Time, Paperplane, Rain, Mystery Song, In the Army Now and Rocking All Over the World, to name but a few.

Front man Francis Rossi described the Parr Hall as a "Bijou" venue and joked about the size of the stage,

apologising if band members bumped into each other.

"We normally have a bit more space to do our stuff," he joked.

It was certainly a night to remember for the Quo faithful with many commenting it was like seeing their heroes in their front living room!

The concert wouldn't have been possible if it hadn't been for a £1.2m investment in the historic building, including improvements to the stage and bar areas and a new sound and lighting system.

The Rolling Stones and The Who have previously appeared at the Parr Hall before they became famous.

## Frank Howard SOLICITORS

### Facing a driving ban? Worried about points on your driving licence?

Call David Robb or Gavin Tranter urgently to discuss your options

Frank Howard Solicitors offer:

- No obligation fixed fee quotations • Friendly, straight forward advice

For a faster move, ring us today

✉ 10 Winmarleigh Street,  
Warrington WA1 1NB  
☎ 01925 653481  
@ mc@fhsolicitors.co.uk

✉ 25 Haydock Street,  
Newton-le-Willows WA12 9AD  
☎ 01925 221321  
@ mc@fhsolicitors.co.uk

## In the pink!

CARING lawyers at local firm Frank Howard Solicitors held a coffee morning at their offices in Winmarleigh Street, Warrington to coincide with Wear It Pink Day to raise funds and awareness for local cancer charities as well as Cancer Research UK.

The Mayor and Mayoress Coun John and Mrs Betty Joyce, together with local business owners and clients of the Firm were in attendance to ensure the event was a success.



# New year and a new season at Pyramid & Parr Hall!



Pyramid  
& Parr Hall

January

## "What's On"

2-15 January

**Jack & the Beanstalk**

Sun 23 January

**Stephen K Amos**

Thur 27 January

**Lenny Henry**

Thur 3 February

**Ben E King**

Sat 5 February

**The Johnny Cash Story**

Sun 6 February

**Vampires Rock**

Sat 12 February

**Zoe Lyons -**

**Clodbusting**

Mon 14 February

**Chris & Pui**

Thur 17 February

**Milton Jones**

Tickets & Information

01925 442345

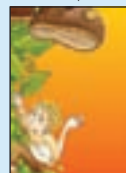
www.pyramidparrhall.com



Launch into the New Year with Pyramid and Parr Hall and a whole host of events and entertainment to whet your appetite. Whether you're a music fan, or simply fancy treating the family to some traditional pantomime fun, we have a spectacular set of events to suit one and all.

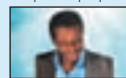
### Sun 2 - Sat 15 Jan - Jack & The Beanstalk

Experience the magic of the world's best-loved pantomime with Tony Peers Productions' latest fun-packed, family show. Suitable for children of all ages from 2 to 92, there will be plenty of chances to boo the villain, cheer the hero and join in with all the fun of the pantomime. (£10/£8.50/£32.50)



### Sun 23 Jan - Stephen K Amos

Stephen pops into Parr Hall with more melt-in-the-middle, heartfelt comedy to warm the very cockles of your heart aww! (£18.50)



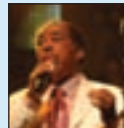
### Thur 27 Jan - Lenny Henry

January sees the welcome return of the original and best funnyman Lenny Henry. His Cradle to Rave show explores the role music has played in his life in a touching journey with laughs aplenty and lots of funky tunes. (£23.50)



### Thur 3 Feb - Ben E King, The Great American Soulbook

The inimitable legend brings his Great American Soulbook to town, for an evening of nostalgic favourites and some of the world's best-loved songs brought together for one night only. (£20)



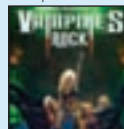
### Sat 5 Feb - The Johnny Cash Story

One no-to-be-missed performance as Roger Dean perfectly captures the spirit of the man behind Ring of Fire and I Walk the Line. (£16/£14)



### Sun 6 Feb - Vampires Rock

For those amongst us who are feeling the bite of vampire culture at the moment, see Vampires Rock - a jam-packed, bloodfest of an evening with all the anthemic rock tunes you know so well (Bat Out of Hell, Sweet Child 'O Mine) alongside mind-blowing pyrotechnics and an incredible set! (£22/£20)



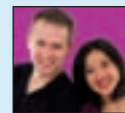
### Sat 12 Feb - Zoe Lyons, Clodbusting

More comedy for those in need of a chuckle or three - Zoe Lyons brings her Clodbusting show to Pyramid, as seen on Mock the Week and The Paul O'Grady Show. (£12/£10)



### Mon 14 Feb - Chris and Pui

Fun for the kids too as CBeebies' favourites Chris and Pui from Show Me Show Me rock up with their fab new roadshow - guaranteed to make the little ones squeal with delight! (£12/£10)



### Thur 17 Feb - Milton Jones

Milton Jones is the weird block with the shirts from Mock the Week and this is his new show with new stuff... and it's selling out fast folks! (£15/£13)



Book now on 01925 442345 or call into Box Office at Pyramid, Palmyra Square, Warrington. WA1 1BL

For full details and listings please visit [www.pyramidparrhall.com](http://www.pyramidparrhall.com) or call the box office on 01925442345



# Priestley takes the lead on international qualification

**A group of students at Priestley College who have become the first in Warrington to study a qualification with an international perspective celebrated its launch at a presentation and afternoon lunch.**

The International Baccalaureate has been running at Priestley since September after the College was awarded World School status by the IBO in Geneva.

Priestley went through a rigorous assessment before being given the green light to offer the long established programme, which is respected throughout the world. It is also one of the fastest growing qualifications in the United Kingdom and Priestley has become one of the first providers in the North West to

offer it.

Students opting for the IB study six subjects, and a core, which encourages independent thinking, social awareness and responsibility. All elements of the IB have an international perspective and offer students of sixth form age something completely different to traditional A-levels.

As the qualification is relatively new to the community in Warrington, Priestley took the opportunity to welcome a number of important

figures to campus in order to give them an insight into the programme. Those visiting included Warrington South MP David Mowat, Steve Clarke (Executive Head at St Gregory's and Newman), Maggie Williams (Head Teacher at William Beumont) and John Sharples (Head Teacher at Sir Thomas Boteler). Members of the Connexions service were also in attendance alongside Jacky Forster and Kate Guise from Warrington Borough Council's 14-19 Strategy Division.

Carol Mtiitimila, IB Coordinator, said "It was great for us as a College to welcome in so many people who

have such a direct and positive impact on the lives of young people in Warrington. The lunch was all about spreading the word and gave the guests an opportunity to hear about the programme from the current Priestley IB students."

Students who will be starting College in September 2011, can find out if the IB is for them at the next Open Evening on Thursday January 27 from 6-8pm. A special IB presentation will also take place on the night starting at 6.45pm. All other information is available on-line at [www.priestley.ac.uk](http://www.priestley.ac.uk).

## MP joins science board



A WARRINGTON MP has been appointed to the board of a body which advises Parliament on science and technology issues.

David Mowat, MP for Warrington South, joins the board of the Parliamentary Office for Science and Technology (POST), a non-party advisory body.

POST provides advice and guidance to MPs and peers on science and technology policy. It also provides analysis to members to enable them to scrutinise Government policy more effectively.

Mr Mowat said: "As one of the few members of Parliament with a scientific or engineering background, I am always keen to see that discussions on public policy are underpinned by a solid understanding of the scientific evidence.

"Subject to the will of the House, I hope that my previous experience will help improve the quality of debate on scientific and technological matters."



## Labour sweep to election victory

LABOUR swept to victory in the by-election for the Bewsey and Whitecross seat on Warrington Borough Council.

There was a 30.5 per cent swing from Liberal Democrat to Labour as voters reflected the national displeasure with the Lib Dems in the coalition government.

The result was:

Jeff Richards (Labour) 1,032; Ann Raymond (Lib-Dem) 221; Lance Reah (Cons) 118; Lyndsay McAteer (Green Party) 47; John Mulhall (Ind) 33.

The turn-out was low - about 18 per cent - although higher than some expected in view of the atrocious weather conditions.

A number of people are believed to have slipped on icy footpaths while going to vote.

Labour had lodged a complaint about untreated footpaths in the area.

The result reduces the majority of the Lib-Dem/Conservative coalition on the borough council to just one.

Jeff Richards (pictured) is a former Mayor of Warrington and has previously served as a councillor for the Bewsey and Whitecross ward for 14 years.

The by-election was caused by the resignation of Liberal Democrat councillor, and defeated Warrington South Parliamentary candidate Jo Crotty.





### Fun Pamper Parties

Angels Pamper Parties for all 3-17 year olds  
Girls & Boys themed parties • Ladies Pamper Parties in your own home  
Special Occasions, Hen Night, Weddings, Baby Showers, Birthdays

**We organise everything for you!**  
Dressing up outfits, buffet, cakes, photographer, balloons, crafts, magicians, limousines, a wide range of treatments and much more!

**A party to remember!**  
Experienced party organisers, CRB checked and fully insured

**Tel: Helen 07852 303433 or Charlotte 07930 444870**  
[www.aloeangels.co.uk](http://www.aloeangels.co.uk)

## Turn your gold into cash

- sell your gold and get instant cash
- valuations on the spot & top prices paid
- loans available on your gold

£200



18 Bridge Street,  
Warrington WA1 2QW  
TEL: 01925 417537

CASH GENERATOR

www.cashgenerator.co.uk

# WM widdows mason

## WM SOLICITORS

WM Established since 1878

### *Widdows Mason Property Team wants to help make your move - smooth!*

Let Widdows Mason help you with possibly the most important financial transaction you will make. It can also be the most stressful.

We will ensure you receive the best attention and support during the course of your transaction. Our specialist staff will ensure the transaction is conducted properly on your behalf.

Whilst we are a local firm with local staff and knowledge we can help you buy and sell any type of property in England or Wales.

Our professional service is conducted at a realistic price and we are able to provide you with an estimate of costs VAT and all disbursements that you will have to pay, for example, land registration fees, and searches.

Consider this:

- ✓ Our fees are fixed and guaranteed
- ✓ There are no hidden extras
- ✓ No Move : No Fee



Direct lines for the team:

**Natalie: 0845 8721535 Carla: 0845 8721607 Stacey: 0845 8721541**



## widdows mason

Incorporating Campbells and Linakers

### SOLICITORS

- Family: Divorce, children, financial disputes  
Contact Paul Ireland
- Property: Buying, selling, remortgage, auctions  
Contact Natalie, Carla or Stacey
- Commercial: Employment advice, landlord and tenant  
Contact Jim Edwards
- Wills and Probate: Equity release etc  
Contact Geoff Thompson or Chris Chadwick
- Accidents: Slipping and tripping, accidents at work  
Contact Michael Stockton
- Crime/Police Station Attendance: (Legal Aid available)  
Contact John Barnes

**FREE initial interview**

Local lawyers for the local community

Criminal  
Defence Service



Arundel House  
12 Rylands Street  
Warrington

Telephone:  
01925 632267

Facsimile:  
01925 445148

web:  
[www.widdows.co.uk](http://www.widdows.co.uk)

email:  
[info@widdows.co.uk](mailto:info@widdows.co.uk)

Community  
Legal Service



**Annual General Report 2010**

# Opening Doors



**Celebrating the  
International Day of  
Disabled People  
3rd December**



# Warrington Disability Partnership (WDP)

WDP is a user led voluntary organisation which actively promotes independent living throughout life and work. Based in Warrington; our team consists of 12 trustees / directors, 115 volunteers and over 50 paid staff who together deliver a range of services directly or in partnership with health and social care providers, education/employment services and a wide range of local support groups and services.

## Chair of Trustees & Chief Officer Report

Dave Thompson MBE DL (Chair) & Jayne Horton (Chief Officer)

On behalf of our team we are delighted to welcome you to the Annual Report for 2010.

WOW what a year, we moved back to our fantastically refurbished Centre for Independent Living. The £1.2million project was a joint initiative with Warrington Borough Council was funded by the Big Lottery – HM Government Big Fund. It has enabled us to transform the Beaufort Street site from a run down, damp, cold and outdated property, into a bright, dry and clean building that has additional facilities in the shape of – the new Learning Centre (IT Suite and Training Rooms plus further developments of the Snoozelem and Activity Room), Mobility Workshop, Mobility Training Track, Conservatory and Community Café (awarded a 5 Star Food Hygiene Certificate) that creates a one stop shop of Independent Living Services.

During our team development day in May we compared the refurbished Centre with our origins of a 3 metre by 3 metre office in the Dallam Day Centre less than 20 years ago. We are sure that some people thought we were joking!

The title of this years report “Opening Doors” was chosen to promote the reopening of the Centre and other new complementary services that can be found at our Beaufort Street site.

As if the refurbishment project wasn't enough, our team also delivered the biggest and best ever Disability Awareness Day that involved over 240 community organisations, statutory service providers, and businesses from across the UK. DAD was supported by 12 complementary events held during the week prior to the big day. In addition we received enquiries from across the UK, Europe and as far a field as New Zealand.

Late September saw a new event to the WDP calendar; our Town Centre Mobility Show was hailed a huge success by our exhibitors and visitors from across the region. In October our seventh Positive Action Awards attracted record numbers of nominations, a speaker with a national reputation and entertainment that will be remembered by everyone of the 200 guests.

As you can imagine with all the work surrounding the relocation to the Centre it's been spend, spend, spend. This includes over £200,000 of WDP monies that have been raised during the past few years. In addition we have received financial support from a range of organisations including WREN, Shaun and his family at the Bond Hotel, David and Jeannie from Fairview Windows and Conservatories and Dr Fouad from St Georges Healthcare.

The celebrations have not been contained to the Centre and events, members of the WDP team have secured various awards for their work. WIRE FM Life-time Achievement Award was received by Brun Corbishley, whilst newcomer Rachel Johnson received a Heart of Gold Award. Steve Boyd, Sue Davies and a number of our IT Suite learners received Lifelong Learning Awards. Our partnership with Leonard Cheshire Disability was recognised when our joint project received the Brook Award for Best Sexual Health Project for working with young disabled people. Volunteer Centre Young People's Volunteer Award nominations for Louise Appleby, Will Clements, Corinne McGreevy, Tom Horton and Eilish Yates (Eilish won an Award).

Although the team has been stretched by the relocation they have continued to deliver, and further develop services and partnerships aimed at ensuring disabled people have a “choice of opportunity”. Our services reach out to a wide audience including disabled people, their carers and families, managers and staff from the statutory and voluntary organisations, local businesses, students from colleges and schools, and the public.

In keeping with our aim to operate as a “Social Enterprise”, nearly a third of our services were “self funded” through a programme of fundraising activities. In line with our commitment to operate as a community partner we procured services from local sources including printing, advertising, IT support, telecommunications, surveillance equipment, security, office supplies, repairs and maintenance to our premises, van, narrow boat and other facilities.

This time last year we predicted the financial challenges ahead, but we hadn't estimated that they would come so quickly. During the year we have said farewell to dozens of colleagues from the council and Primary Care Trust. Many of them have played vital roles in WDP's development.

We know that the year ahead will be even tougher, but it is our belief that our resolve is strong enough to ensure the least disruption to our services and to support our staff, volunteers, users of our services and our partners through the anxiety and frustrations that this may no doubt cause.



In an attempt to become less reliant on statutory funding we are in the final stages of developing our Disability Trading Company. This will allow us to develop a retail arm that will include sales, servicing and repairs of independent living products such as scooters and wheelchairs. It will also allow us to expand our training and auditing services, with all profits going to WDP. Next year we will be celebrating the 20th anniversary of the foundation of WDP and the 20th Disability Awareness Day. Keep an eye on our website for more details.

On behalf of the team we would like to thank fellow Trustees/Directors, our staff and volunteers, the people who use our services and everyone who has supported us during the past year.

Finally we would like to invite you to read the reports from our teams and consider this question: Are we continuing to achieving our aim of supporting independence throughout life and work.

We look forward to working with you all during the year ahead.

Thank you

*Dave & Jayne*



**PS:** Look on the back page for more information about *Going the Extra Mile* – can you join us in trying to raise funds that is needed to complete the additional refurbishments?



## Access and Training

*Self financed through income generation*

### Overview

Our Access and Training Team provide advice and support to local businesses, voluntary organisations and individuals. This ranges from general telephone advice to site visits, audit reports and delivering Disability Awareness Training.

### Statistics

Access Visits & Audits Enquiries	141
Disability Awareness Training Sessions	27
Attendees	451



### Making A Difference

*"Many thanks for the Audit report, it is exactly what we needed. The feedback we have had from our Team is that your Advisors were very professional, polite and pleasant whilst carrying out the audits".*

*"I never realised there was so much involved in the Disability Awareness Training – this was a great session I got a great deal out of it."*

## Accessible Caravans

*Self financed from income generation and donations*

### Overview

Our two holiday homes in North Wales provide disabled people, their families or carers the opportunity to take an accessible and affordable holiday.

Grenadier is on the Harts "Little Fields" site in Pensarn and Guillemot is on the Lyons Robin Hood site in Pensarn.

### Statistics

<b>Grenadier (Harts)</b>	
Number of bookings for 2010	22
<b>Guillemot (Robin Hood)</b>	
Number of bookings for 2010	22



### Making A Difference

*"What a lovely caravan; just what we needed. Very relaxing and accessible. We will see you again next year."*

## Appreciation of Efforts 2009

Supported by Warrington Guardian and Warrington Borough Council

### Overview

We launched these awards in 1995 and they are aimed at recognising organisations and individuals who provide the very best in local services for disabled people.

### Statistics

Nominations in 2009	48
Awards presented in 2009	10



### 2008 Winners

BUPA Residential Care Home	Dave Mercer
Debbie Norman - One Stop Café	Julia Hopwood - HMP Risley and HMP YOI Thorn Cross
Kath Jones - Long Lane Centre	Ilham's - Barber Shop
St. Oswalds House Nursing Home	Starbucks Warrington
Tina Wells - Direct Payments PA	Warrington MENCAP Housing Team

### Making A Difference

*"Starbucks was honoured to receive a recognition award. Our connection with our neighbourhood and community, whether on a local or a global scale, is at the heart of our values. We will always endeavour to help others in whatever way we can. We hope to maintain this relationship with Warrington Disability Partnership and to expand it over time."*

## Benefits Advice

*This service is un-funded*

### Overview

Our benefits advice service is run predominantly by volunteers meeting clients who require support to complete benefit application forms. The team completes regular online research and attend training to keep their knowledge up to date.

### Statistics

During the year our volunteer benefit advisors have helped to secure over £900,000 in benefits which includes Disability Living Allowance, Attendance Allowance, Carers Allowance, Employment Support Allowance, Income Support and Pension Credits. The advisors also signpost people to other WDP services and support organisations and networks.

### Making A Difference

*"Meeting with your benefits advice team has enabled me to apply for a benefit which I didn't think I would be eligible for. This has enabled me to purchase a car on the mobility component which has given me more freedom and independence".*

## Centre for Independent Living – Equipment Showroom

Funded by NHS Warrington & supported by Warrington Borough Council

### Overview

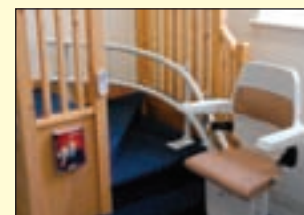
Our Equipment Showroom has a range of independent living equipment on display including bathing, toileting, mobility, stair lifts, recliner chairs, and adjustable beds. Small daily living aids can be purchased at the Centre and our staff and volunteers also offer information and advice on a wide range of other topics including sensory impairments; accessible holidays, days out and work closely with Housing and Care Call services.

During 2010, we have refurbished the Equipment Showrooms and introduced some new equipment for display; we now have vehicle adaptations, ergonomic workstations, children's, kitchen and bathroom displays. Soon to follow is our new multi sensory snoozelem room.

Supported by the Warrington Borough Council Third Sector Policy Team, WDP became a Department of Health User Led Organisation (ULO) demonstrator site whereby we work with other Local Authorities and ULOs to share information about how they can set up their own CIL.

### Statistics

Number of visitors to CIL, yearly average	13,604
Telephone enquiries to Showroom, yearly average	4,357
Volunteer hours, yearly average	2,529



### Making A Difference

*"The service received was second to none; the staff at the Centre couldn't do enough for me and took their time at explaining everything that I wanted to know. I will definitely be coming back again".*

## Disability Awareness Day (DAD) 2010

*Principally sponsored by the NorthWest Regional Development Agency and supported by 5 Boroughs Partnership NHS Trust, BT Retail, Environment Agency, Lions Club International, NHS North West, NHS Warrington, NHS Western Cheshire, TNG, Warrington Borough Council, Warrington Collegiate and Warrington & Halton Hospitals Foundation Trust, Golden Square, Halton Borough Council and Bond Hotel*

### Overview

Each year DAD gets bigger and better and DAD 2010 was hailed as "the biggest and best" in the 19 year history of this annual event. Visitors and exhibitors came from across the UK and Europe ensuring our international links were maintained. We have continued to receive enquires from across the world including Australia, South Africa, Portugal and we welcomed an official civic party from Nachod in the Czech Republic to the launch event held in the Golden Square. Closer to home we also welcome our partners and colleagues from the 5 Boroughs Partnership NHS Foundation Trust who joined us at the DAD Reception to promote their Sticks and Stones Stamp Out Stigma campaign. Praise was given to the joint work between the voluntary, statutory and private sectors in supporting the event as sponsors, exhibitors and supporters. DAD was supported by 12 complementary events held the week leading up to the big day.

### Statistics

No of exhibitors for 2010	253
No of visitors for 2010	28,000
No of volunteer hours for DAD	4,512



### Making A Difference

*"Thank you all so much for letting us join in a really special event today promoting our charity - we thoroughly enjoyed it! We were expecting a long day, but it passed so quickly - too quickly really as we were so busy!"*

*The day was an absolute credit to WDP; your staff are dedicated, passionate and pro-active. Just seeing the crowds enjoying themselves spoke volumes, and if only a handful of people went away with a new perspective on 'disability' and its wider implications, then it was a great success! However, I'm certain that many more people got the message loud and clear.*

*Once again, many, many thanks to you all and a special 'thank you' to you all for being so supportive of my daughter since she joined you as a volunteer - I know she's in good hands!"*

## Disability Information Point, Warrington Retail Market

*Staffing is self funded, the stall space is supported by Warrington Retail Market*

### Overview

Our team provide a wide range of information and advice on local support and voluntary services. We also provide advice and assistance on national voluntary and statutory organisations and disability service providers. We operate a satellite Shopmobility service, which offers scooters, electric wheelchairs and manual wheelchairs.

Our volunteer welfare benefit advisors offer advice and support helping clients to fill in their benefit forms, our team actively support our Fundraising programme and we hold Community Information Days for local and national support groups to promote their services.

The stall also sells small pieces of equipment which we order from our In addition, small pieces of equipment are available to be ordered from our Centre for Independent Living.

### Statistics

Enquiries – yearly average	2,911
Volunteer hours – yearly average	4,631
Number of scooters hired, yearly average	710



### Making A Difference

*"I don't know what I would have done if I hadn't been able to get the information and advice about my daughters illness. I had tried everywhere and I was told about the stall where I found lots of facts and information."*

## Discover IT Suite

*Funded by Warrington Borough Council's Life Long Learning and Public Service Agreement Reward Monies. Supported by Warrington Collegiate, UK Online, Change Up Consortium and Small Grant Funding streams.*

### Overview

Our Discover IT Suite is run predominantly by disabled people for disabled people, their families and carers. Specialist software aims to make this facility accessible for all with adapted keyboards, mice and fully height adjustable desks to accommodate individual needs. The team also offer a Camera Club and other art and craft activities which we are able to run in liaison with Warrington Collegiate.

### Statistics

Membership – yearly average	123	Number of attendances – monthly average	231
Usage hours – yearly average	1,137	Volunteer hours – yearly average	961

### Making A Difference

*"I have had the confidence to go out and buy a lap top. I can now email friends and family and order stuff from shops online"*

## Employment Team

**Funded through Skills for Jobs 'Routeways' programme by Warrington Borough Council with Skills Funding Agency and European Social Fund plus a Pathways to Work sub-contract from TNG with Department for Work and Pensions plus a Next Step sub - contract from Greater Merseyside Connexions and Skills Funding Agency plus other funding support via Lancashire Colleges Consortium.**

### Overview

The team provides a user led accredited Information, Advice and Guidance service and arranges volunteering, work placements, supported employment, work trials, and supports routes towards part and full time work for individuals. Help local employers to sign up to the 'Two Ticks' disability symbol promoting best practice in recruitment and retention. We support employers through our Mental Health Employment Retention Officer who supports them on issues relating to mental health and wellbeing in the workplace and individual employees in retaining employment. The team also administers the Towards Work Support Fund and advises on Access to Work.

The Lavender Hill programme, in partnership with Warrington CVS, targets people who are 50 years plus providing skills, financial and health checks to improve training and work opportunities. The team is also engaged in a scoping project in partnership with WBC's Supported Employment Team to provide a wider range of learning and work opportunities for people with learning difficulties/disabilities.

### Statistics

Total number of registered clients, monthly average	606
New clients from January to September 2010	237
Pathway new clients from January to September 2010	35
Routeways new clients from January to September 2010	145
Next Step advice sessions delivered from January to September 2010	57
Phone enquiries for Employment information & advice – yearly average	4,339
Towards Work Support Fund Referrals / Beneficiaries	111 / 88
Full time job entries from January to September 2010	46



### Making A Difference

*"The Employment Team have lots of knowledge about jobs and courses and they don't push anything on you, but leave the door open. They were positive and gave me more confidence and helped me to start talking to people again. I have had a really good experience with WDP after years of not getting any help anywhere else."*

## Finance & Payroll

**Self financed through income generation**

### Overview

Our team offer a payroll service for Direct Payment users and small businesses. This includes registration of all employers/businesses with the Inland Revenue, processing payroll from time-sheets, producing payslips and ensuring all Tax and National Insurance are paid to the Inland Revenue by due dates. We also support our Treasurer and Chief Officer in producing Management Account Reports for the Board of Trustees and Project Management Reports for Team Leaders to submit to funders.

### Statistics

Payroll employers – monthly average	306	Volunteer hours – yearly average	370
Payroll employees – monthly average	502	Phone enquiries – yearly average	1,623

### Making A Difference

*"Feel free to put comments on the service I receive from WDP up in bright lights because that is just how I feel about the team there, you are all like 'friends' to me."*

## Fundraising & Promotions

**Self financed through donations and fundraising**

### Overview

Fundraising plays an integral role in supporting many of the self financing or un-funded services offered by WDP.

Throughout 2010, we have had a packed calendar of activities supporting local community events, information days, carnivals and fun days both raising awareness of WDP's services and fundraising. This has taken place alongside other fundraising events, Disability Awareness Day, Manchester 10k, Easter and Christmas Tombola's, Raffles, Santa's Grotto, Bucket Collections and new for 2010 – Team WDP (our ever growing Team of supporters who are ready for any challenge), an advanced screening at Odeon Warrington and the Warrington Mobility Show.

All of this was only possible with the support from our members, volunteers, staff, sponsors and supporters who attend these events and a special thank you to Essence of Life who have taken us on as their Charity of the Year.

### Statistics

Quiz Nights 11; Events over 40; Attendees at events - approx 72,500; Attendees we engaged with - approx 32,000

### Making A Difference

*"I enjoy supporting the Fundraising Team as it makes me feel that I am giving something back to my Community and a worthwhile cause. WDP were there for me when I needed assistance"*



# Independent Living Team

Funded by Warrington Borough Council.

## Overview

Our team supports clients throughout the whole process of setting up and running their Direct Payment and Personal Budgets; this supports them with their independence and may be using an agency or employing their own Personal Assistant (PA).

The support includes recruiting, advertising, interviewing, contracts of employment, Employer Liability Insurance and Criminal Records Bureau checks along with any day to day problems they may have with the running of the Direct Payment. We also work closely with our Payroll Service to process wages, holidays, tax calculations and pay slips.

## Statistics

Clients in receipt of Direct Payment – monthly average	432
Referrals from January to October 2010	215
Phone Enquiries – yearly average	3,600



## Making A Difference

*“Direct Payments has given me my independence and is important to me as it also gives me freedom of choice.”*

# Leisure, Recreation and Sport

Funded by Warrington Borough Council and Cheshire & Warrington Sports Partnership  
Working in partnership with ASET, Aiming High for Disabled Children, Warrington Youth Club, NSPCC,  
Warrington Wolves Foundation and Warrington Swimming Club

## Overview

The team has been involved in a number of community based projects:

- Planet Blue – supporting young disabled people to take part in sport and other activities within a youth club setting. The sessions meet weekly at Peace Centre for young disabled people aged 11 - 25 year olds.
- Mini Disability Sports Club (MINI DISC) – provides young disabled children aged 5-11 years an inclusive sports club that caters for their needs and ability levels. The sports club meetings weekly at William Beaumont High School, the club offers a variety of different sports that enable disabled children to adopt a wide range of skills.
- Disability Inclusive Sports Club (DISC) - provides young disabled children aged 11- 19 years an inclusive sports club that caters for their needs and ability levels. The sports club meets weekly at William Beaumont High School, the club offers a variety of different sports that enable disabled young people to adopt a wide range of skills.
- One Wednesday Can't Hurt (OWCH) Pain Management Support Group - the group meets weekly at Fearnhead Community Centre and supports disabled people who have chronic pain helping them get involved in positive gentle exercises.
- Kids Inclusive Swimming Club – the swimming sessions are suitable for disabled children and young people aged 5- 18 years giving them skills to swim within the water setting and meets weekly at Penketh Community Swimming Centre.
- Wheelchair Sports Club – the Wheelchair Sports Club allows disabled children and young people the opportunity to take part in wheelchair skills and specific wheelchair sports. The club meets weekly at Broomfield Leisure Centre and is open to children and young people 11+.
- Sport Unlimited (5 Hour Offer) - developing an 8 to10 week initiative highlighting inclusive activities for young disabled people.
- Leisure, Recreation & Sports Forum – meets quarterly at Warrington Disability Partnership and looks at ongoing provision in the area. The main aim is to discuss key developments and success to avoid duplication of services and share guidance and support of both local authority and voluntary sector organisations.
- Inclusive disco - monthly discos held at Chicago Rock launched in March 2010.

## Statistics

Planet Blue attendances, yearly average	2,283
DISC attendances, yearly average	450
Sporting Chances attendance, yearly average	659
OWCH attendances ,yearly average	617
KISS attendances ,yearly average	423
LRS Forum attendances, yearly average	86



## Making A Difference

*“I just wanted to send this email with regards to my views on the excellent work that the DISC for my son. We found out about the two sports club when we went down the route of Direct Payments with my Social Worker and the WDP Direct Payments Team.of being able to join in the fully inclusive activities”.*

WDP are represented at over 120 meetings locally, regionally and nationally to ensure that disability matters are on the meeting Agenda. Meetings range from local Support Groups to Warrington's Local Strategic Partnership and the national Sexual Health & Disability Alliance. This ensures that we are promoting social inclusion and breaking down barriers.

# Positive Action Awards 2010

Sponsored by the Northwest Regional Development Agency

## Overview

Launched in 2004, these awards provide an opportunity for disabled people and carers living in the Northwest to nominate employers, businesses, service providers or individuals that deserve recognition for promoting independence, delivering accessible and/or inclusive services, or maintaining exemplary employment practices for disabled people and/or carers. 111 awards have been presented since 2004.

## Statistics

Nominations in 2010	111
Awards presented in 2010	15

## 2010 Winners

5 Boroughs Partnership NHS Foundation Trust  
'Sticks and Stones' Campaign  
Abigail Yates - Huyton  
Active Community Enterprise (ACE) – Prescot  
Aintree University Hospitals NHS Foundation Trust 'Volunteer Programme'  
BETA Netc@fe – Wigan  
Compassion in Action – Lowton  
Crossroads Caring for Carers – Isle of Man  
Diverse Road Safety – Liverpool  
Ella Performance Group – Runcorn  
Lancashire Teaching Hospitals NHS Foundation Trust  
'Workplace Familiarisation Programme'  
Laser Wars UK – Penrith  
M & Y Joinery Ltd – St Helens  
Mid Cheshire Hospitals NHS Foundation Trust  
Start - Salford  
The National Trust – Alderley Edge



**positive**  
Action Awards  
NORTHWEST

## Making A Difference

*"Having our work acknowledged is an honour not only to our organisation but to all the parent carers who would like more for their children and strive to see them become independent and successful adults. Watching young people move from our transition project, 'Building Bridges', onto our Social Enterprise Scheme and into employment has been all the reward Crossroads IOM needs, but it is fantastic that the North West Positive Action Awards are there to show the country what has been achieved by those with learning disabilities and to prove that the 'sky is the limit' with enough support, drive and determination."*

# Relationships, Sex & Disability Matters

Funded by NHS Warrington, NHS Halton and St Helens

## Overview

This innovative service is nationally recognised for tackling this very sensitive subject. Enquiries are received via our Centre for Independent Living, Disability Information Point (Warrington Retail Market), website and telephone. Our 'Relationship and Sex Matters' information packs were revised and re-launched in April 2009. The packs now include a new Young Persons Section.

The wide range of information provided in the packs is used by professionals or individuals to offer support and advice on the issues concerning sex and disability.

WDP is a member of the Sexual Health and Disability Alliance (SHADA) Group and this project has linked in closely to the Leonard Cheshire Disability In Touch Project which was awarded the Brook Award for the Best Sexual Health Project in March.

## Statistics

Training sessions delivered for 2010 Relationships, Sex & Disability Matters	4	Number of people attended training, yearly average	80
Information Folders distributed	70	New Volunteers and staff trained to give advice	3
Advice sessions	316	Total number of advisors	10

## Making A Difference

*"I needed to ask someone for support on a very delicate topic and I managed to speak to someone without feeling judged. The information that was given to me was given in a very professional but discreet manor".*

## Shopmobility Halton Lea

*Funded by Halton Borough Council and supported by Halton Lea Shopping Centre*

### Overview

Halton Lea Shopmobility offers people with temporary or permanent disabilities the chance to experience greater freedom and independence throughout the Halton Lea Shopping Centre. We provide manual and electric wheelchairs and mobility scooters 6 days a week to enable visitors to make the most of the centres facilities. We also offer a range of equipment for sale in our showroom here; items of equipment are available for sale or can be ordered from our Centre for Independent Living.

### Statistics

Number of scooters loaned – monthly average 231  
Number of scooter hours – monthly average 437  
Volunteer hours – monthly average 303

### Making A Difference

*“Thank you for the friendly service you offer. Without Shopmobility I would be unable to go around the Shopping Centre and enjoy the facilities available. I am encouraged to use Shopmobility more often as I am greeted with a happy smile and a friendly chat before I go on my way. The small aids available to buy have made a difference for me around my home as to what I am able to do things more easily”.*



## Shopmobility Warrington

*Funded by Warrington Borough Council and supported by Golden Square Management, Bovis Lend Lease and Warrington Bus Interchange*

### Overview

Our Warrington Shopmobility service provides a vital life line for those who require mobility support to shop in the Warrington Town Centre and Golden Square. We provide the means to allow people to get out and about and shop as independently as possible. We also sell small pieces of equipment and others are available through an ordering service from our Centre for Independent Living.

### Statistics

Number of scooters loaned – monthly average 493  
Number of scooter hours – monthly average 1542  
Volunteer hours – monthly average 295

### Making A Difference

*“Shopmobility not only gives me the independence and confidence to shop alone, it also means I have somewhere local for items I may need with information available on other services”.*



## Trustees & Senior Management

Warrington Disability Partnership Board of Directors/Trustees ensures that the organisation operates within the legal framework laid down by the Charities Commission and Companies House. They strongly support the Senior Managers with the overall management of our services.

### The Board consists of:

- Dave Thompson MBE DL - Chair
- Audrey Rogers – Secretary
- Chris Molyneux
- Gary Skentelbery
- Jeff Greenwood
- Terry Wadsworth
- Pat Kitto – Deputy Chair
- Sue Abbott – Treasurer
- Dave Cheetham
- Ian Richardson
- Simon Banks
- Liz Matthews (co-opted)

### Senior Managers:

- Jayne Horton – Chief Officer
- Brun Corbishley – Assistant Operations Manager
- Dave Connor – Assistant Operations Manager



# Volunteering

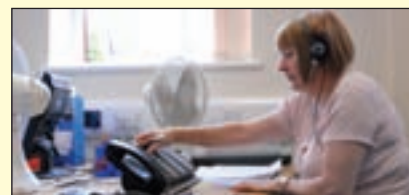
*Self financed from donations*

## Overview

Our volunteers are involved in the delivery of many of our services. Our Volunteer Support Workers ensure that most of our volunteers receive regular support and access to opportunities to develop their skills. A further three of our volunteers have undertaken NVQ's this year in Customer Care, Business Administration, Numeracy and Literacy through YMCA Training.

## Statistics

Volunteer hours – yearly average across all services	29,560
If paid at minimum wage (£5.93) – yearly average	£175,290.80
Switchboard phone calls taken by our volunteers average - per year	23,604



## Making A Difference

*"Volunteering at WDP has been of huge benefit to me after a long period of sickness. The technical knowledge and skills training that I'm gaining working in an office environment is preparing me for a future life in paid employment. The biggest impact however, has been on my self confidence and anxiety levels which have improved dramatically. My Doctor was amazed by the tremendous benefit volunteering has had on my health and overall sense of well being and has encouraged me to keep up the volunteering and keep getting better".*

# Warrington Disability Forum (WDF)

*This service is un-funded*

## Overview

The Warrington Disability Forum provides monthly meetings for consultation and information exchange with guest speakers ranging from the Warrington Borough Council's Deaf Services Consultation and Neighbourhood Boards Update to Disability Hate Crime Presentation.

The Forum has a lively agenda for discussion and an active membership from individuals and organisations with an interest in disability matters.

## Statistics

Attendances, monthly average	17	Forum membership average	87
------------------------------	----	--------------------------	----

## Making A Difference

*"Attending WDF meetings really helps me to share news and keep in touch with the issues which are important to a significant special interest group - those representing disabled people. The value of the networking opportunities cannot be underestimated either".*

# Websites

*Self financed from donations*

## Overview

WDP operates four websites, all of which are built to a high standard of accessibility:

### Disability Awareness Day - [www.disabilityawarenessday.co.uk](http://www.disabilityawarenessday.co.uk)

Our most popular site which provides information on all DAD activities. The site features local information pages giving details of accessible transport, hotels, shopping, sightseeing and tourist facilities. The site has colourful galleries of past events, and a toolkit to download for organisations wishing to run their own DAD.

### Positive Action Awards - [www.positiveactionawards.org.uk](http://www.positiveactionawards.org.uk)

Designed to promote the Awards scheme and collect nominations, the site offers photographs and information of previous winners and a background to the awards.

### Warrington Disability Partnership - [www.disabilitypartnership.org.uk](http://www.disabilitypartnership.org.uk)

Giving information on WDP services the site includes content management for news and events as well as most of the front page features and the interactive blog from our Chairman. This is a busy and useful website through which WDP receives local and national enquiries.

### Warrington Access Guide - [www.warringtonaccessguide.org.uk](http://www.warringtonaccessguide.org.uk)

This interesting site was developed from in-house data about local accessibility. This website is currently being updated and managed by a team of volunteers as well as staff members, and adapted as feedback from site users is received. Traffic has grown by over a third in the last six months.

## Statistics: Look how these were presented last year

WDP monthly average	1,774 monthly visitors	8,443 page impressions	700,000 hits per year
DAD monthly average	1,532 visitors	5,408 page impressions	960,000 hits per year
PAA monthly average	283 visitors	541 page impressions	50,000 hits per year
WAG monthly average	1,443 visitors	4,522 page impressions	436,000 hits per year

## Making A Difference

*"The website was really easy to find out what hotel my daughter and I could stay at - thanks to the clear navigation and design of the information pages on the DAD site and the Access Guide site helped us to find as accessible chemist and a cafe during our stay. Thank you for an excellent service."*

## Wheelchair and Equipment Loans Service

*Self financed through donations*

### Overview

Offering free short term loan of over 300 wheelchairs, ranging from small child's up to large adults. This service also hires out other pieces of equipment, including, lightweight travel scooters, compact travel hoists, high back chairs, lightweight travel ramps and various other pieces of equipment. We also offer a delivery service within the local area.

### Statistics

No of wheelchairs loaned – yearly average	723
No of pieces of equipment loaned – yearly average	53



### Making A Difference

*"We wanted to send you a short note thanking you for the loan of the wheelchair, it was fantastic and to actually see my father out and about enjoying himself was truly a special moment. We can't thank you enough".*

## Wizard Narrow Boat

*Self funded from income generation and donations; supported by Thorn Marine and the Barn Owl Lymm*

### Overview

The Wizard is a unique wheelchair accessible 40' narrow boat that offers low cost day trips to the disabled people, their families, carers and support groups within the local community along the scenic Bridgewater Canal.

### Statistics

Number of trips booked for 2010	92
Number of people using the Wizard for 2010	768
Volunteers	28
Volunteer hours	2033



### Making A Difference

We had a very relaxing stress free trip, the crew were very pleasant and helpful and there was good lift access for disabled people."

## Young Ambassadors

*Funded by Leonard Cheshire Disability In Touch Project until 31st 2010*

### Overview

Our Young Ambassadors work with local schools and colleges to deliver a package around disability awareness breaking down barriers and stigmas. Our Young Ambassadors are able to offer advice around general disability awareness, mental health and relationships, sexual health to young disabled people.

### Statistics

Presentations to schools & colleges for 2010	19
Average number of pupils attending each presentation (monthly)	104

### Making A Difference

*"This training has opened my eye's it has made me more aware of different disabilities, needs and has helped me to identify real barriers that affect disabled people"*



In addition to those mentioned throughout this report WDP would like to thank our volunteers, trustees and paid staff along with individuals, organisations and businesses who have supported us throughout the year (a full list is available on our Website).

**LOG ON TO OUR WEBSITE FOR REGULAR NEWS ITEMS**  
**[www.disabilitypartnership.org.uk](http://www.disabilitypartnership.org.uk)**

# Going <sup>the</sup>

# EXTRA Mile

**Warrington Disability Partnership relies on fundraising and donations for a number of our projects. We wouldn't be able to deliver these without the support from our family, friends and supporters who help us to raise these additional funds.**

**We have a number of people offering to be sponsored to 'Go the Extra Mile' for WDP and if you are willing to do any of the following or have any ideas on how you can 'Go the Extra Mile' please contact our Fundraising Team and they will support you with sponsor forms and promotion.**

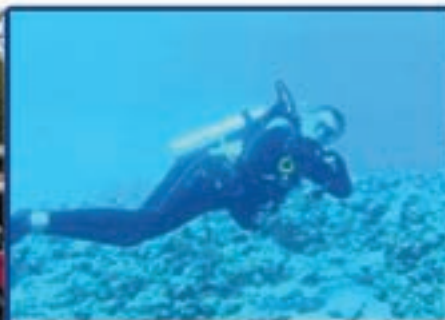
**Are you willing to go the EXTRA Mile to help raise funds for Warrington Disability Partnership?**

- **Swimming for a mile**
- **Hand cycling for a mile**
- **Running for a mile**
- **Three legged race for a mile**
- **Walking for a mile**
- **Parachute jump for a mile**
- **Wheelchair push for a mile**
- **Hit a golf ball for a mile**
- **Cycling for a mile**
- **Walk backwards for a mile**

**If you have any ideas on what you can do for a mile, please give us a call?**



**Manchester 10k Run**



**Our Chairman will be attempting 66 lengths (1 Mile) of under water scuba dive**



**Manchester to Blackpool Bike Ride**



**For further information contact our Fundraising Team on:  
01925 240064 or**

**Email: [fundraisingadmin@disabilitypartnership.org.uk](mailto:fundraisingadmin@disabilitypartnership.org.uk)**

**Registered Charity No. 1113597.**

**Registered Company Ltd by Guarantee No: 4726639**

Motoring

# Roadside killers!

**THERE is nothing more attractive than a tree-lined road.**

But behind the leafy beauty hides an alarming statistic - one in 12 UK road deaths involves a collision with a tree.

Research by the AA has revealed that in 2009 there were 175 fatal accidents involving vehicles striking trees - eight per cent of all road deaths.

Unlike road deaths in general, which have fallen by 35 per cent since 2000, fatal tree accidents have fallen by only 18 per cent.

The unforgiving nature of collisions with trees meant that, in 2009, four times more motorists were killed after hitting a tree than were killed after crashing into a lamppost. In a sample of 10,000 car insurance claims, about 1 per cent involved collisions with trees.

In rural areas, the death rate from vehicles hitting trees runs at 12 per cent, or just over one in eight road fatal accidents along non-built-up roads.

Tree-related fatal accidents steadily increased from 214 a year in 2000 to 272 in 2006, but have fallen since. Fatal accidents with lampposts during the same period have nearly halved, from 77 in 2000 to 41 in 2009.

Andrew Howard, the AA's head of road safety, said: "Too many drivers just don't understand that trees are among the most unyielding roadside objects. Trees hit by cars often show

little or no sign of even the most severe impact.

"Consequently, trees have been the nemesis of extreme driving - hit one at speed and you and your passengers will be lucky to escape alive. Too often, when a driver speeds, makes a bad judgment and leaves the road, it is a tree that stops the vehicle in its tracks.

"In recent years, moving lampposts

back from the kerb and making signs and other man-made street furniture less 'hard' have significantly reduced casualties.

"However, trees, some with preservation orders and often immovable from the roadside, present a threat where the only defence is speed limits and road markings that try to influence driver behaviour."

## MOT changes

VEHICLES may soon not need an MOT certificate until they are four years old.

At present, a vehicle has to be tested when it becomes three years old and then re-tested annually.

But the government is considering switching to four-year-tests, with re-tests every two years thereafter.

## A new motor show



A NEW motor festival is to be launch in March, promising three unforgettable days for all-comers to indulge in the continuing love affair between the British people and the motor car.

The first British Motor Festival is to be held at the Royal Windsor Racecourse, Berkshire, on March 11-13 and will run alongside the annual British Leisure Show, which attracted more than 21,000 visitors last year.

Event managing director James Brooke (pictured) said: "The new British Motor Festival has been designed to provide visitors with entertainment, interaction, education, hospitality and a unique display of new and classic cars and motorcycles at a prestigious venue.

The Royal Windsor Racecourse provides the perfect setting for purists to enjoy their passion, at a time when manufacturers and dealers are looking to engage with new customers. It's a great value family day out, and visitors can enjoy two exciting events for the price of one!"

Features at the event include a Formula 1 simulator and a stunning display of Owners Club cars.

Headline exhibitors already confirmed for the new British Motor Festival include Rolls Royce Motor Cars Sunningdale, Morgan, Caterham, Squire Furneaux Volvo, Citroen Slough, Subaru, Isuzu, Triumph, Tesla Motors, Get On, Royal Enfield and Harley Davidson.

There is free entry for children under 16, free parking and easy access from all over the country via the M3, M25 and M4.

For more information visit [www.britishmotorfestival.com](http://www.britishmotorfestival.com)

The entry fee will also cover the British Leisure Show ensuring it will be a day out for all the family.

**CHERRY & GRIFFITHS**

SUPPORTING YOU ALL THE WAY

**Cherry and Griffiths**  
**08448 223 623**

HOUSEHOLD BUILDINGS & CONTENTS  
COMMERCIAL BUILDINGS, MACHINERY & STOCK  
BUSINESS INTERRUPTION  
HIGH NET WORTH  
ANTIQUES AND FINE ART

PEACE OF MIND FOR THE POLICY HOLDER

## Having a problem with your insurance claim for burst pipes, fire, flood, theft or other major disaster?

Dealing with insurance companies has become increasingly time-consuming and frustrating as you are passed around from one person to the next, leaving you feeling that you have little control over the situation.

An expert claim consultant can take the hassle out of your insurance claim, guaranteeing the best possible outcome without you having to spend hours on the phone or getting involved in disputes.

Would you go to court without a solicitor? Would you buy a house without the help of an estate agent? Most people, knowing the potential legal issues that they could face, would not. Yet, when in the unfortunate circumstance of having to claim on their insurance, the majority of people still attempt to fight the battle themselves, unaware that they could have expert assistance from experienced claim consultants and insurance loss assessors, Cherry and Griffiths.

The fact of the matter is that insurance policies, both domestic and commercial, are tremendously complex documents and insurance companies, are notoriously difficult to deal with. But, Cherry and Griffiths have so much experience in all realms of insurance that you can be guaranteed that your claim will be handled efficiently and effectively. C.G.H.W. Ltd is registered and authorised by the FSA and was founded 18 months ago by Paul Cherry, Paul Griffiths, Geoff Williams and Richard Hope, trading under the name

of Cherry and Griffiths.

Having all previously been employed by the same company, they decided to combine their 126 years of experience to set up their own business, opening offices in Burnley, Preston and Manchester. Each director has a broad range of experience, with two being qualified loss adjusters. Between the team they also have extensive individual experience in large property owner portfolios, antiques and high net worth, business interruption, retail and hospitality and personal home insurance and always ensure that the right person is allocated to your claim. Whether your claim is related to burst pipes, fire, flood, theft or another major disaster, Cherry and Griffiths will work on your behalf to remove the hassle from your claim.

You won't have to get involved in disputes. You won't be passed from pillar to post. Cherry and Griffiths will do it all for you while being on hand at all times to offer you support. By remaining in control of your claim, Cherry and Griffiths aim to avoid time consuming disputes with insurance companies, unless absolutely necessary, using industry know-how to negotiate the best possible settlement for your situation in the

quickest time possible. Also, because they know that your home or business is one of the most important things in your life, Cherry and Griffiths will ensure that, in the majority of cases, you will be in charge of selecting your own contractors and suppliers, rather than those suggested by your insurer, so you can have peace of mind that the job will be done properly.

Cherry and Griffiths has already built up a strong portfolio of clients in the North West and beyond, who appreciate the personal approach and comprehensive services that they offer. Your situation has already caused you a lot of stress, so why not let Cherry and Griffiths take the hassle out of your claim.

We offer an initial free no-obligation consultation. Call us now to find out more about how we can help you 08448 223 623.



# Hatters Row... 'a little gem'



Marvellous news for devotees of retail therapy... I've discovered a little gem right in the heart of Warrington town centre.

Hatters Row is a delightful shopping centre with that touch of class I always insist on.

Fascinating shops and a sophisticated café for relaxing and rationalising all the shopping bags you have accumulated.

**Shops include:**

**Wonder Feet – Fish spa and foot therapy**  
Tel: 07921 332 082 or 01925 244956

**Gallery Studios – Photographers and picture framing**  
Tel: 07503 169655

**The Gold Centre – Jewellers**  
Tel: 01925 445325



**AA Communications – Mobile phone and I.T. repair centre**  
Tel: 01925 574555

**Hatters Hair - Hairdressers**  
Tel: 01925 445964

**Hatters Coffee Shop – inside on first floor**  
Tel: 01925 445716





**WARRINGTON Town are going for promotion - on and off the field with a brand new promotional DVD to help raise the profile of the club around the town.**

It features action from the club's historic sell out clash against Chester FC earlier this season at a packed Cantilever Park with the club's barmy army in full voice. It will be used during visits to schools, local community groups and businesses to show the potential future for a successful football club in Warrington.

It is supported by Warrington Wolves Chairman Steven Broomhead, who has shown his support of the club at a number of games over the past couple of seasons.

Mr Broomhead says the town would benefit enormously from having two successful sports teams, rubbishing comments from some in the community that the town will never have a successful football team because it is a rugby league town.

The club's fortunes have been transformed over the last couple of seasons from a club nearly always involved in the relegation dog fight, to a team competing with the best in the league and pushing for promotion.

The profile of the club has also reached new heights thanks to a number of high profile sponsorship agreements with Warrington Collegiate, Tailormade Group, Warrington

Borough Transport and the Environment Agency along with a number of other local businesses including TnM Couriers and Liam James Lettings.

The latest boost has been a £50,000 grant from Waste Recycling Environmental Limited (WREN), a not-for-profit business that helps benefit the lives of people who live close to landfill sites, towards providing two five a side pitches at the ground to benefit local community groups and enhanced training facilities.

The money is being donated to the club's not for profit arm the Warrington FC Academy.

Pyramid & Parr Hall in association with Tony Peers Productions present

Guest starring Warrington Wolves mascot Wolfie!

# JACK and the BEANSTALK

A magical family pantomime

Parr Hall, Warrington  
Sun 2 - Sat 15 Jan 2011

Tickets £10.50/£8.50  
Family ticket £34

Box Office: 01925 442345  
www.pyramidparrhall.com

Warrington & Pyramid ParrHall

# CARPETS DIRECT

OPEN TO THE PUBLIC

## SAVE UP TO 75% OFF HIGH STREET PRICES

<b>OVER 200 ROOM SIZE ROLL ENDS FROM £19</b>	<b>OVER 60 ROLLS From £2.50m<sup>2</sup></b>	<b>STAIN FREE BERBER BLEACH CLEANABLE OVER 30 COLOURS WAS £9.99m<sup>2</sup> NOW £4.99m<sup>2</sup></b>
<b>WOOL BERBER 50% WOOL 6 COLOURS/STYLES RRP £27.99m<sup>2</sup> NOW £6.99m<sup>2</sup></b>	<b>UNDERLAY 15m<sup>2</sup> BAGS ONLY £38.00</b>	<b>STAIN FREE TWIST Bleach Cleanable 10 colours Was £10.99m<sup>2</sup> NOW £5.99m<sup>2</sup></b>

At CD our aim is to give customers real value for money, we do this by stocking over 200 rollends and over 50 rolls all at fraction of high street prices as our advert shows. We also sell all current ranges along with all leading manufacturers eg. Brockway, Abingdon, Axminster, Cormar to name but a few. We may not have all the samples but we can get the carpet. So call in with your selection you've been quoted elsewhere and let us give you a down to earth price. Also you will notice we sell underlay, grippers and doorplates at wholesale prices.


**WE LOOK FORWARD TO SAVING YOU MONEY.**

Ask for Kev

**CLEARANCE STOCK ARRIVING DAILY**

**01925 419423**  
**25-27 Orchard St,**  
**Warrington, WA1 2TE**  
**BEHIND SAINSBURYS**

Provided by:  
**WatkinsonBlack**  
Chartered Accountants



**Chartered Accountants**  
**Registered Auditors**

Contact  
**David Watkinson**  
or **Margaret Black**  
at:  
1st Floor,  
264 Manchester Rd  
Warrington

**Tel:**  
**01925**  
**413210**

or email:  
info@warrington  
accountants.co.uk  
www.watkinson  
black.co.uk

# Financially yours

By David Watkinson

## Saving of tax and national insurance

One method of saving tax and national insurance is by an employer and an employee agreeing to participate in a salary sacrifice scheme. This is where the employee agrees to sacrifice part of his salary in exchange for a non-cash benefit.

Salary sacrifice arrangements are particularly effective when the salary is exchanged for a tax-free benefit. These benefits could, for instance, be qualifying child care vouchers or even the provision of free car parking facilities which may be particularly valuable if the employment is in a city centre. One of the biggest savings available to most people, however, is where the salary is exchanged for employer pension contributions. If the employee is below the upper earnings limit for national insurance purposes then pension contributions can be boosted by about 30% at no additional cost to either the employee or employer.

It is, however, important to consider the impact that the proposed salary sacrifice may have on other taxes and benefits. For instance, the reduction in salary may affect your entitlement to Statutory Sick Pay, Statutory Maternity Pay, Statutory

Adoption Pay and the State Pension.

Similarly, exchanging salary for qualifying child care vouchers may result in the value of the vouchers being deducted from any Child Tax Credit that you were previously entitled to claim. On the other hand, as the vouchers are tax free your income for the purpose of calculating Working Tax Credit will have been reduced and this may result in an increased entitlement. Student Loan repayments may also be reduced. These advantages would apply in respect of a sacrifice in exchange for any of the tax free benefits.

If you are in the fortunate position of being a higher rate taxpayer then there is even greater scope for planning. The income tax burden of the higher paid is due to rise significantly, with a 50% income tax rate on income over £150,000 and also the progressive loss of personal allowance when your income exceeds £100,000.

For instance, if your taxable income is between £100,000 and £112,950 then this progressive reduction in the personal allowance results in a marginal tax rate of 60% on your top slice of income over £100,000. In these circumstances, you



David Watkinson and Margaret Black

may, for instance, consider that lowering your salary to £100,000 and taking an additional holiday entitlement, or your employer making an additional pension contribution, to compensate for this reduction in salary may be an income sacrifice worth taking.

Proper planning, however, is critical for any salary sacrifice to succeed. To qualify as a genuine salary sacrifice arrangement an appropriate change must be made to the contract of employment, and you will also need to demonstrate that the loss or reduction in salary is permanent.

*WatkinsonBlack are pleased to advise on these matters at their offices in Manchester Road. Accordingly, please note that these ideas are intended to inform rather than advise and you should always obtain professional advice before taking any action.*

# WatkinsonBlack

Accountants who care for Clients who matter



**VH PADDINGTON HOUSE HOTEL**

Post Christmas  
All Inclusive Parties  
January 2011

**New Bar Menu  
for 2011**

**2 for 1 Menu  
(main meal)**

**Function rooms available  
for private functions**

**Conference facilities available  
to suit your needs**

**CALL CHRIS OR DARYL FOR DETAILS**

**Tel: 01925 816767** | 514 Manchester Road, Warrington WA1 3TZ  
www.venturhotels.co.uk | Email: cb@paddingtonhouse.co.uk

**twentyfourseven**  
design and print ltd



**Special Offers**

- 500 Full Colour Digital Business Cards (Buy 1 set, Get 1 set free!) **£35.00**
- 100 A3 Full Colour Posters **£38.00**
- 500 A6 Full Colour Double Sided Flyers **£50.00**
- 10,000 A5 Full Colour Flyers (Pay for 1 side, Get the other printed for free!) **£248.00**
- 60" x 40" Full Colour Posters **£12.00**

Subject to VAT where applicable

**t. 01925 240 247 e. info@247print.net**

a. The New Media Centre, Old Road, Warrington, WA4 1AT

**CLASSIFIED** **Freephone 0800 955 5247 to advertise**

**ACCOUNTANCY & SAGE TRAINING**  
**APPEGATE & CO** licensed and regulated by the AAT to engage in public practice in Accountancy, Book-keeping, Payroll, VAT, Self Assessment. **Tel: 01928 739996/07803 218343, 2 & 8 Collinson Court, Frodsham WA6 7PN.** (08/11)  
**WHY TRY TO BE A PAYE EXPERT?** Watkinson Black can provide a cost effective payroll service, releasing you to concentrate on your business. **For further details please phone: 01925 413210 or e-mail: info@warringtonaccountants.co.uk** (06/11)

**BATHROOMS**

*The bathroom*  
**Refurbishment Co.**

We can create the Bathroom of your dreams  
 One Warrington based Company  
 One Job from start to finish  
 Unique 3D virtual CAD design system

Please visit our website  
[www.bathroomrefurbishment.co.uk](http://www.bathroomrefurbishment.co.uk)

Please Ring Wayne  
**01925 826 828 or 07976 574 828** (06/11)

**BUILDING SERVICES**

**BIG DIG Groundworks**

Flagging, Block Paving, Garden walls, Fencing, Patios, Drives, Foundations. For free estimates call Mob: 07954 563 266 or Tel: 01524 424 5462 [www.bigdiggroundworks.co.uk](http://www.bigdiggroundworks.co.uk) (08/11)

**CARPET CLEANING**  
**A1 STAINBUSTERS:** Fully guaranteed carpet and upholstery deep dry cleaning. Clean & dry in only ONE hour. Quotes for both commercial and domestic. Contact the Local expert **John Latham** on 01925 205 210 or call 07765 314080 (04/11)  
**SAFE CLEAN: SAFE ORGANIC CLEANING.** Specialists in cleaning all leather and fabric upholstery, rugs, carpets and curtains in situ. Ask about our new organic allergy relief system, Guardsman stain protection plans and carpet repairs. Call **Carey Randall** on 01925 815724 (04/11)  
**SIMPLY THE BEST CARPET CLEAN YOU WILL EVER HAVE.** Cleaners UK Ltd. Est 23 yrs. Have your carpets & sofas beautifully deep cleaned leaving them fresh smelling & colour restored. Latest & best methods. Dry/steam. Professional, reliable & affordable. **For more info call Neil Riley on 01925 264989/07831 336060 www.cleaners-uk.net** (02/11)

**CLIMATE CONTROL**  
**CLIMATE CONTROL BY WARRINGTON** based 4 Seasons, for offices, shops, surgeries, schools, homes and conservatories like yours! Installed in a day guaranteed 5 years. Keeping you cool when it's hot and warm when it's not. **www.4sac.co.uk 01925 868960** (02/10)

**COUNSELLING**

**Birchbrook Counselling Service**  
 Discreet and confidential counselling service  
 Reiki healing and attunements  
 Emotional and Physical journey work  
**Call 07951 266476** (08/11)

**CONSIDERATE COUNSELLING AND HYPNOTHERAPY** Service has qualified therapists who offer sessions in a safe, secure and confidential environment, phone **0161 776 9961** or email **susan.eatonval@yahoo.co.uk** (08/11)  
**COUNSELLING & MEDIATION SERVICE** for individuals, couples and families. Qualified and experienced practitioners can help you work it out. **For a free information pack call free phone 0800 6123 523.** (08/11)

**DELIVERY SERVICES**  
**FURNITURE FERRY LIGHT REMOVALS.** Collections arranged from Ikea, Costco and other stores, garden centres, auctions etc. You choose, you buy, I deliver - SIMPLE. Reliable, inexpensive service. **Tel: Matt 07970 178 333 or 01942 601079. www.furnitureferry.co.uk** (05/11)  
**TNM COURIERS** - specialists in urgent UK same day deliveries, international and UK next day services available, contract work undertaken, parcels to pallets, no job too small or too big, competitive rates. **Call 01925 639029.** (06/11)

**ELECTRICAL CONTRACTORS**  
**A1 ELECTRICAL SERVICES PAUL LEWIS.** For extra sockets/lights, main board upgrades to full rewires, no job too large or small. No call out fee. All work guaranteed. **Tel 01925 758337 or 07966 386806.** Est 23 years. (08/11)  
**EVERGREEN ELECTRICAL CONTRACTING.** NICEIC approved contractor. For lights and sockets to rewires, fuse-box upgrades. Qualified electrician. All work is to the latest IEE wiring regulations. No job too small. Most major credit and debit cards accepted. **Tel: David on 01925 724219 / 07971 407022.** (06/11)  
**TRUST PROPERTY ELECTRICAL SERVICES.** NICEIC Part P Approved Contractor. All Electrical work undertaken. Inspection & Testing & PAT Testing. All work certified & guaranteed. **Call Tim on 07754409906 or 01925 601055** (03/11)

**FIRES & FIRE SURROUNDS**

**Quality Fireplaces at Affordable Prices**  
**WARRINGTON FIRE SURROUNDS**

**Surround & Marble Only £299**

**Quality Value Service Guaranteed**  
**01925 417731**  
**www.warrington-fires.co.uk**  
**8 Lovely Lane, Warrington (follow signs for hospital)**

**GARDENING SERVICES**  
**LAWN AND SPORTS GROUND DRAINAGE IN ONE DAY.** No digging, no repairs. Providing for the larger grassed areas, picture and formal lawns. **Contact Bob 07952 608701. 01925 266852. Vat Reg.** (03/11)  
**M J NEEDHAM LANDSCAPES** Award winning with over 15 years experience. All aspects of landscaping, specialist in bespoke construction. Qualified design service available. **Contact 01925 825 645 or 07888 730 383** (03/11)

**HOUSE SHARE**  
**EMPLOYED - NON SMOKER WANTED** to house share in Culcheth with young male professional. £350 per calendar month plus bills. The house is a beautiful character property, 3 beds and comfortable living space. References will be required. Telephone 01925 768910 and ask for Matt Streets (01/11)

**HYPNOTHERAPY**  
**MICHAEL MAHONEY** clinical hypnotherapist for IBS, Stress, Anxiety and many other problems. Medical Research project experience, BUPA Service Provider. **For FREE information sheet please email TimelineServices@aol.com or ring 01925 658322** (06/11)

**OPTICIANS**  
**THOROUGH EYE EXAMINATIONS** followed by professional personal dispensing in a "no hurry" atmosphere All types of contact lenses including single vision, toric, and multifocal in soft or gas permeable materials. Zeiss Relaxed Vision Centre. **Tel: Richard Shaw on 01925 632516 or visit www.shawvision.co.uk** (06/11)

**PICTURE FRAMING**  
**PICTURE FRAMING SERVICE,** also original paintings, prints, and giftware. Giclee Printing Service for artists. **The Brentwood Gallery, 106 - 108 London Road, Stockton Heath, Warrington WA4 5LE. Tel: 01925 601473 www.brentwoodgallery.co.uk** (11/11)

**PLASTERING**  
**CULCHETH PLASTERING.** Reskims, dry-lining, patching and coving. Specialist in extensions and conservatories. Quality craftsmanship. Professional and reliable service. Call Mark on 01925 733640 or Mob 07542 282 857. (02/11)

**PLASTERING CHESHIRE**

All aspects of Plastering undertaken  
 Internal & External

25 years experience

The best and cleanest service around

Beautiful work guaranteed

All areas covered • Great Rates

**Tel: Brian Gaffney**  
**Home: 01925 755958**  
**Mobile: 07967 087034** (11/11)

**ROOFING**  
**APEX ROOFING.** Roofing repairs & complete replacement. Built up flat roofing, Slating, Tiling, Fascias, soffits and gutting Free quotes, references available. **Tel: 0781 488 0246.** (03/11)

**SEWING MACHINES**

**J&P Sewing Machines**  
 Do you want to buy a sewing machine and confused to which one suits your needs?  
 We like to advise without pressure  
 Servicing - Free estimates given  
 Call Now on  
**Tel: 01925 633831**  
**www.jpsewingmachines.com**  
 2 Suez Street, Warrington (04/11)

**SITUATIONS VACANT**

**SALES EXECUTIVE**  
 Local publishing company seeks highly motivated sales executive to generate new business accounts. The successful applicant must be a self starter, full of enthusiasm and not afraid of long hours. The successful candidate will be able to demonstrate the ability to:-

- Achieve sales targets
- Promote and sell a range of company products profitably
- Manage a pipeline of business prospects
- Be able to communicate on all business organisation levels
- Maintain excellent levels of negotiation and sales closing skills
- Identify new business opportunities

Remuneration will be dependent on experience - but to include commission and bonus package.

**JOURNALIST**  
 A parttime vacancy exists at this magazine for an experienced journalist who will have a proven track record in reporting for a daily or weekly newspaper, be able to work to deadlines and be unafraid of unsocial hours.

**OFFICE ADMINISTRATOR**  
 Part time office administrator required. Sage Accounts experience essential, including Payroll and must be able to demonstrate invoicing, sales and purchase ledger experience/skills. Ability to work unsupervised and good telephone manner required. Hours by arrangement.

In the first instance please email your CV to **info@warrington-worldwide.co.uk**

**VEHICLES SALES**

**PARKVIEW CAR SALES**

**We buy and sell QUALITY CARS**  
**Best price paid**  
**Telephone Peter on 01925 575737 / 07957 545479**  
 23 Padgate Lane  
 Padgate, Warrington  
 Cheshire, WA1 3RS (6/11)

**WINDOWS & GLAZING**  
**SP GLAZING** for all your glazing requirements, double glazed units including failed and misted units, broke windows, mirror fixing. Kite marked to B/S. Time served glazier with over 30 years experience. **For a friendly no obligation quote tel Sam Pendlebury on 01942 671859. Mob 07919 660296.** (04/11)

**To advertise in the classified section call James Bryan on 0800 955 5247**

# Shop Local

Welcome to our special feature which is aimed at encouraging our readers to support local businesses.

Any local business wishing to feature in future editions please contact us on 0800 955 5247.

Please mention this publication when responding to an advertiser.

**WHEN IT RUNS OUT**



**POP IN AND SEE HOW MUCH MONEY YOU COULD SAVE TODAY!**

The official cartridge for Canon and HP printers. See us for more details. We're open 7 days a week.

27 Cairo Street, Warrington  
**01925 413050**  
 cwstocktonheath@cartridgeworld.co.uk



www.cartridgeworld.co.uk

BRING THIS ADVERT IN-STORE AND SAVE AN EXTRA 20%



**25% Off All Servicing During January With This Advert!**



**752 Knutsford Road  
Latchford  
Warrington  
WA4 1JS**

**MJCycles.com** ☎ 01925 650100

**groom**  
to have and to hire...




**Free bottle of champagne with all new orders placed (this month only)\***

1-4 The Courtyard  
Horsemarket St  
Warrington WA1 1XL  
Tel: 01925 658 889  
warrington@groomhire.co.uk

**www.groomhire.co.uk**

\*Terms & Conditions Apply

**Acrylic Full Set £20**  
 Infill £13  
 Permanent White Tips £20  
 Permanent Coloured Tips £22  
 Take off & New set £25  
 UV Gel Full Set £30  
 Infill £22  
 Glitter Tips Powder Full Set £28  
 Infill £20  
 Take off & New set £32  
**From £20 Full Set 10% Off For Students**  
 Free hand design on 2 nails with a full set of nails or infills

**U.S. NAILS**



Professional Nail Care for Ladies & Gents  
 53 Sankey Street, Warrington WA1 1SL  
**07826 566661**

*Probably the best traditional pub in town....*

**PARR ARMS**  
Grappenhall



3 Course Sunday Lunch **Only £9.95**  
 Curry Night - Monday's 6-9pm **Only £5.95**  
 Wednesday's at 9pm **Quiz Night!**

Tel: 01925 267393  
 Church Lane, Old Grappenhall Village

**AV8 TRAVEL**  
Luxury travel at economy prices

Going out/away for Christmas? Why not go there in comfort and style. Give us a ring for the best service at affordable rates in Warrington.

**01925 444 777**  
 email: [enquiries@av8travel.co.uk](mailto:enquiries@av8travel.co.uk)

24 Town Hill Warrington WA1 2NG | Pre-bookings recommended

No Comassing  No Sales Calls

**NOW LOCATED IN BIRCHWOOD SHOPPING CENTRE**

**pczone uk**  
computer solutions

**SPEED UP YOUR PC**  
 Full Format - Re-install Windows and Anti Virus £40

PC REPAIRS • UPGRADES • HARDWARE • ACCESSORIES • MEDIA  
 CUSTOM BUILT SYSTEMS • INTERNET CONNECTION AVAILABLE

Epson, Canon, Lexmark, HP & Brother Printers  Replacement Ink Cartridge Sets for All Printers  Upgrade your Computers Memory 

From Only £49      From Only £4.75      From Only £24.99

**LOTS MORE OFFERS IN-STORE - CALL IN TODAY**

45 Dewhurst Road - Birchwood Shopping Centre - Birchwood - WA3 7PG  
 Tel: 01925 551686 Web: [www.pczoneuk.co.uk](http://www.pczoneuk.co.uk) Email: [info@pczoneuk.co.uk](mailto:info@pczoneuk.co.uk)



**20% OFF**  
**ZEISS Lenses**  
 This Winter

valid until 22nd January 2011

**richard shaw**  
 optician

01925 632516  
 7 Bold Street, Warrington

www.shawvision.co.uk

**BED Factory**

GUARANTEED LOWEST PRICES OR DOUBLE DIFFERENCE BACK

**WE ARE HERE**

**UNIT 18, GATEWAY 49  
 TRADE PARK, KERFOOT ST  
 WARRINGTON, WA2 8NX  
 T: 01925 63 08 68**

**£30 CASH BACK FOR YOUR OLD BED**

**SENIOR CITIZEN ONLY**

BUY BED WORTH £250 OR MORE  
**AND GET FREE**

SMART PILLOWS & MATTRESS PROTECTION







**Boutique HOCO**

11 OLD MARKET PLACE  
 GOLDEN SQUARE  
 WARRINGTON  
 01925 639 354  
 WWW.BOUTIQUEHOCO.CO.UK



Charming by Ti Sento  
 Now Available

Your Story Around Your Wrist

BUTLER & WILSON  
 Charming  
 Ti Sento  
 NOMINATION  
 CHAMILIA  
 HENRIETTA

**Prestige** Prestige Auto Repairs  
 127 Hoyle St  
 Warrington  
 WA5 0LP



**AUTO REPAIRS**  
 Servicing, Full Diagnostics & Fault Finding  
 Specialising in All Prestige Cars

**FREE**  
 Collection & Delivery Service

Tel: 01925 576602 Mob: 07738 511486  
 www.prestigeautorepairs.co.uk email: nigel@prestigeautorepairs.co.uk

**Cards by Samantha** *Craft Boutique*

For all your card making needs  
 Card making classes for all levels  
 Saturday workshops  
 Unique gifts for all occasions  
 Hand made wedding stationery - made to order



For further information on all the above:  
 Tel: 01925 602848 www.cardsbysamantha.co.uk  
 2 Barley Road, Thelwall, Warrington, WA4 2EZ

**Express Mobile Tyres**



**01925 728811**  
 www.expresstyres.co.uk

The tyre service that comes to you  
 at home or your place of work

BRIDGESTONE Continental GOODYEAR AVON TYRES  
 PIRELLI DUNLOP Firestone MICHELIN

**Andrew James Hair Design Studio**

93/95 Knutsford Road, Grappenhall, Warrington, WA4 2NS  
 Tel: 01925 262101

Fully air conditioned with free car parking outside  
 Late night Wednesdays and Thursdays till 8pm

(93) This is our gents hair salon with up to 4 barbers in attendance  
 SPECIAL OFFER - any male senior citizen Tues to Fri - 9am till noon  
 Dry Cut Only £5 Just walk in, no appointment required

(95) This is our ladies hair salon with 6 work stations available  
 We also specialise in: American Dream hair extensions  
 & Enzo Brazilian Keratin hair straightening Call for an appointment

On the lower ground floor of 93 & 95 is Devotion Beauty  
 Call Hanifa on 07708 320508 Strictly by appointment only

**Cheshire Angling**



**NEW Range of Garbolino Rods, Luggage & Accessories**

Gift Vouchers Available  
 Pike & Sea Fishing Frozen Baits  
 Wide Selection of Tackle

**Tel: 01925 635486**

Cheshire Angling Supplies, 278a Thelwall Lane, Latchford, Warrington WA4 1NF



**Dancingwear UK**  
01925 752652

**Ballet Shoes  
Tap Shoes  
Dance Sneakers  
Leotards  
Dance Gifts**

We supply dance uniform and shoes for different styles of dance including Ballet, Tap and Jazz.

You are welcome to visit our shop in Thelwall, Warrington or you can order from our newly re-designed website:

[www.dancingwear.co.uk](http://www.dancingwear.co.uk)

Free ample parking  
Fancy Dress also available!

**Opening Times:**  
Monday - Friday 10am - 4.45pm  
Thursday until 6pm

Dancingwear UK, Laskey Lane, Thelwall, Warrington, WA4 2TF



Realise your **child's** potential

**Maths and English After-School Programmes**

Kumon can help your child progress with their maths and English studies, boost their confidence and help them shine.

**Kumon programmes:**

- work at a pace that is tailored to your child's needs
- develop invaluable study habits and concentration
- establish a solid foundation for academic success
- complement the school curriculum

Every day Kumon helps children of all ages and abilities to realise their true potential.

Classes held  
Great Sankey Leisure Centre and High School, Barrow Hall Lane, Great Sankey WA5 3AA  
Contact: Jane Kerfoot  
**01925 419599**  
**KUMON**  
Every child can



**Want to save money?**

**Join the club!**  
(over 350,000 people already have)

**I ♥ the Club**

**94% OF CUSTOMERS SAY THEY'D RECOMMEND US TO A FRIEND**

- ✓ Guaranteed savings!
- ✓ Save 25% on your household bills
- ✓ Award-winning customer service
- ✓ Which? Best Buy - Phone and Broadband Bundles Feb 2010
- ✓ UK's cheapest line rental
- ✓ Free Global Calls\*
- ✓ Triple Value\* guarantee on gas and electricity
- ✓ Cheapest online shopping
- ✓ 1000's of High Street retail partners
- ✓ Earn CashBack on shopping and petrol

For full details contact:  
**0800 955 5247**  
New Media Centre, Old Road, Warrington WA4 1AT

**THE UTILITY WAREHOUSE**  
MEMBERSHIP CLUB

\*Cheapest rates and conditions apply. See www.utilitywarehouse.co.uk for full details.

# Extra £1/2 million council tax income

COUNCIL tax income in Warrington could increase by more than £1/2 million next year because of the number of new homes that have been built and sold.

The calculation of the borough council's tax base indicates an increase of 505, taking the number of homes to the equivalent of 70,157 Band D properties.

Main reason for the increase is the number of properties sold between September last year and September this year at Chapelford Village, Carrington Park and Regency Park and an estimate of the number of properties that will be sold at Chapelford, Clearwater Quays, Chester Road and Navigation Street during the coming year.

Any increase in the council tax base results in extra income of £1,137 per property.

This will result in additional tax of £547,000.

There are actually 88,178 domestic properties in Warrington. These have been valued by the district valuer and placed in one of eight bands, A to H, according to the price at which the property might reasonably have been sold on the open market on April 1, 1991.

The number of properties are then adjusted for discounts and exemptions and then converted to the number of Band D equivalent properties.

In a report to councillors, chief finance officer Lynton Green says an incorrect estimate of the number of Band D equivalent properties would result in the council having to declare a deficit for 2011-12, adding an additional budget pressure to the 2012-13 financial year.

But Warrington are declaring a collection fund surplus of £400,000 for 2010-11, giving extra income of £337,000, with £43,000 paying to the police authority and £20,000 payable to the fire authority.

"As the same prudent method is being followed as previous years it is thought that the risk of declaring a deficit for 2011-12 is very low," the report adds.

## School wins top national award

A WARRINGTON high school has won a national award from the Specialist Schools and Academies Trust (SSAT) for outstanding achievement in sustainable engineering and manufacturing.

Specialist engineering college Great Sankey High School has won the Rolls-Royce Award in recognition of its achievement in sustainable engineering and manufacturing including innovative teaching methods, extra-curricular activities and examination results.

Nicola Swaney, education manager at Rolls-Royce presented the award at the SSAT's national conference in Birmingham, attended by some 2,000 teachers from 1,000 schools from 10 countries around the world.

Students at Great Sankey have many opportunities for success in an exciting and well tailored curriculum because the school's specialism continually brings new opportunities and dimensions which extend and enhance provision, according to Ofsted, which has credited the school with an "outstanding" grade.

Denise Joseph, the National Network co-ordinator for Technology at the SSAT, said: "Their partnerships are vital bringing a 'real world' dimension for learners."

Large engineering companies like Morgan Sindall, Jaguar and Wates Construction support their Engineering Diploma. The thriving Young Apprentice programme is also supported by the flagship Automotive Skills centre, a superb facility with cutting edge technology, built in partnership with the RAC.

Suzanne Harrison, director of engineering at the school, said: "We are very proud to have won an award for engineering from such a prestigious company renowned for its quality and history. It celebrates the achievements of both staff and pupils and the way in which engineering permeates through every subject area in our school."

## Horticulture learning centre opens

THE New Routes horticulture training project and community garden, in Victoria Park, Warrington, is celebrating after opening a new cabin to provide a new learning centre.

Deputy Mayor Ted Finnigan officially opened the building which provides a warm, comfortable environment for people working towards qualifications in horticulture.

It is also available for small groups from the wider community and provides an information sources on wildlife and the local environment.

Volunteer Jonathon Pritchard also took part in the ceremony.

A gospel choir from Penketh High School provided entertainment.

The £15,000 funding for the project came from The Big Lottery, Stronger Together, the Lions Clubs of Lymm, Birchwood and Warrington, the Knights of St Columbo and B&Q.

Marje Caine, from charity group MacIntyre, said the project had been made possible by volunteers bringing their professional skills, learners, staff and partners using the site working together.

# Ci



We will pay the VAT  
on any fully fitted  
kitchen ordered in  
January 2011

## CHESHIRE IDEAL

### N O R T H W I C H

## SPECIALISTS IN QUALITY FITTED KITCHENS AND APPLIANCES

Our dedicated team offer a complete service from design to  
installation, including appliances

Visit our showroom or website to see our huge choice of colours, styles  
and finishes to suit all budgets

Striving to give the best possible service  
for over 25 years



Gaumont House  
Stanley Grove  
Northwich  
CW9 7NP

Telephone:

01606 41256

[www.cheshireideal.co.uk](http://www.cheshireideal.co.uk)

OPEN: Monday - Saturday 9am - 5pm. Sunday 10am - 4pm



*That*  
**Beautiful Restaurant**  
*in Culcheth*

## **5 Course Valentines Day Menu**

*Choose any dish from the A la Carte Menu*

Popadoms, Onion & Mango Chutney  
Any Starter, Any Main Dish, Any Naan or Rice  
Coffee, Dessert

**only £24.95 per person**

Children allowed til 7pm • Seatings available between  
6pm - 6.30pm & 8pm - 8.30pm

*Fresh roses for the ladies and a chocolate gift per couple*

Bookings taken by email: [miah@thespicelounge.com](mailto:miah@thespicelounge.com)

**Call: 01925 767 777 or 01925 767 744**

411 WARRINGTON ROAD, CULCHETH

