

Boutique


 01925 639 354
 Old Market Place, Warrington
 www.boutiquehoco.co.uk

Warrington worldwide

Issue No. 154

August 2012

FREE EVERY MONTH



Bittersweet moment

Page 3

had an
 accident?

call your
 local legal
 experts

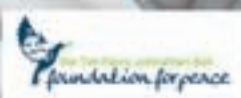
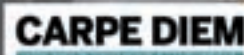
free legal clinic
 Mondays 5pm-7pm

forshawes
 law
 01925 230000
 www.fshawes.co.uk

DREAM DOORS
 NEW LIFE FOR OLD KITCHENS

Visit our Showroom:
 92 Knutsford Road,
 Grappenhall,
 Warrington WA4 2PJ

Call NOW
 to book your
 FREE ESTIMATE today
 on 01925 211308



Editor's Comment



Editor

Gary Skentelbery

Production

Paul Walker

Advertising

James Balme
Tony Record
Freephone
0800 955 5247

Editorial

01925 623631

Email

info@warrington-
worldwide.co.uk

Websites

www.culchethlife.com
www.frodshamlife.co.uk
www.lymmlife.co.uk
www.warrington.tv
www.warrington-
worldwide.co.uk

Address

New Media Centre
Old Road Warrington
WA4 1AT

warrington-worldwide is
published monthly by
Orbit News Ltd.

The contents of this magazine
are fully protected by copyright
and nothing may be reprinted
or reproduced without prior
permission of the publishers.

The publishers are not liable for
any statement made or opinion
expressed by third parties in this
publication.

Printed by TwentyFourSeven

CONGRATULATIONS to Warrington Wolves on reaching their third Wembley final in four years – a truly remarkable achievement for Tony Smith and his team.

It will certainly lift spirits during what can only be described as miserable summer weather wise.

Let us hope the sun shines on Warrington at Wembley on Saturday August 25, when they take on Leeds Rhinos in a repeat of the 2010 final.

Two years ago Warrington blew the Rhinos off the park with a ruthless performance – I expect a tougher battle this time – but hopefully the Wolves can prevail and bring the Challenge Cup back home to create another uplifting experience on the town hall lawn.

Meanwhile the Wolves' sporting neighbours Warrington Town have made no secret of their desire to win promotion this season, which would also bring another welcome boost.

With their new training camp at

the £30 million Orford Park, the facilities are second to none, so everything is now in place for the club to kick on and start its journey up the football league pyramid.

A town the size of Warrington is deserving of a football league team and all the added economic benefits it can bring. If you have never been to Cantilever Park I would urge you to get behind your local team and help

their dream become a reality.

The season kicks off at home on Saturday August 18 against Ossett Town kick off 3pm. Look out for the special promotions which include free admission – and as always all children under the age of 12 can get in free at any home league game.

It is the ideal venue for any youngster to get their first taste of a live football game.



Shelly's

Breakfasts Two for One

Monday, Tuesday and
Wednesday's only
9am to 11am



Open for breakfast, lunch, afternoon tea and dinner
8 Bold Street, Warrington Tel 01925 654000
www.shellysrestaurant.eu



For a no obligation
initial consultation
contact us

TailorMade House
Unit 1, Olympic Way
Olympic Park
Warrington, WA2 0YL

Contact Jo or Heather on

01925
810595
quoting ref TMSM2

Or e-mail:

info@tailormadegroup.co.uk
www.tailormadegroup.co.uk

TailorMade for you...

Whether building your pension or considering retirement. Understand ALL your options...

TailorMade SIPP Limited are an independent financial advisory company whose sole purpose is to offer advice on the merits of moving preserved pension schemes into a SIPP (Self Invested Personal Pension)

A SIPP is a form of personal pension scheme which gives you the freedom to choose and manage your own investments. It's a pension vehicle for people who desire more control over their funds, allowing them to decide which investments are appropriate to them specifically (subject to certain HM Revenue and Customs restrictions) rather than their investments being managed within a pooled fund chosen by a third party.

We are completely independent, therefore we are not influenced by a corporate

parent or network, which enables a wider audience to utilise our services to establish whether a SIPP is suitable for their retirement planning strategy. **We only provide limited advice and a SIPP may not be the appropriate option to consider.**

As a company we are authorised and regulated by the Financial Services Authority (FSA number 506611) and as such are monitored strictly to ensure the advice we give to our clients is in their best long term interests. TailorMade SIPP Ltd would urge anyone considering transferring preserved pension funds from their current arrangement(s) to a SIPP (or any other pension contract) to obtain professional advice from a qualified Independent Financial Adviser before doing so.

Do you have any **preserved** pension arrangements? • Would you like to decide where **your** pension fund is invested? • Would you like **all** your funds in **one** place? • Would you like the option to put **your** funds into a **wider** variety of Investments? • Would you like a more **proactive** service from your pension provider? • Have you been **dissatisfied** with your current pensions performance? • Are you **concerned** about having enough income when your time comes to retire?

If you answered yes to any of the above questions.

It's time to act...



Because life is all about
decisions...

Bittersweet moment for torch bearer Adrian

IT was a bittersweet moment for GB sword fencer Adrian Derbyshire as he proudly displayed his Olympic torch at the annual Disability Awareness Day at Walton Gardens.

Having been chosen to carry the torch through Chester, Adrian, who now lives in Leicester Street, Warrington, had set his heart on representing Great Britain in the forthcoming Paralympics - but now has been robbed of his chance through a shoulder injury.

Although he has been invited to help with coaching, it is not quite the

same as representing his country on the world stage.

"I am devastated I won't be able to represent my country at the Paralympic games," said Adrian "but it was a great honour to be chosen to carry the torch through Chester.

"It had been my dream to compete at the games but it is sadly not to be."

The 37-year-old wheelchair fencer,

who has won three gold and two silver international medals as well as being Great Britain number one, has enjoyed a meteoric rise to the top after first picking up a sword just over three years ago. Adrian suffered a brain haemorrhage followed by meningitis which left him requiring the use of a wheelchair in 2008.

Showing plenty of fighting spirit he quickly established himself on the international fencing scene but now has sadly been sidelined through injury after surgery on his shoulder.



Town's population tops 202,000

BOOMING Warrington - recently named as the top town in Britain for economic growth over the last 100 years - now has a population of 202,200.

The figure has emerged from last year's national Census - and reveals a 5.8 per cent increase since the last Census in 2001.

Overall, the population of England and Wales has now reached a record 56.1 million.

The Census results provide a detailed range of information about people and places including

population and household figures.

Results relate to information provided on Census night, March 27, last year.

In Warrington, 96 per cent of Census forms were returned.

They showed that Warrington has 1,600 more women than men - 101,900 women and 100,300 men, making a total of 202,200.

The town has 85,100 households and there is an average of 11.1 people living in each hectare.

Nearly a quarter of the resident population is aged 0 to 19 years -

24.1 per cent, slightly more than the national average.

More than half the resident population are aged 20 to 64 years - 60 per cent compared to 59.6 per cent nationally.

Nearly one in six residents are aged 65 years or over - 15.9 per cent compared to 16.4 per cent nationally.

Persons aged 45 to 49 years make up the largest age group, accounting for 8.2 per cent of the population.

Nationally, around 25 million households were involved in the Census.

Have you got a story?
Send your news items and pictures to info@warrington-worldwide.co.uk or phone 01925 623631

Whites Sports
Warrington Market
1901 - 2001 - 100 YEARS OF EXCELLENCE

Specialists in:
Darts, Bowls, Snooker, Air Guns, Walking Sticks, Warrington Town Merchandise, Rugby, Cricket, Football

GIFT VOUCHERS AVAILABLE

Telephone/Fax:
01925 631531

The Dress Studio

Stockists of many designer brands including:


- Forever Unique • Rare • Lipsy • Reverse
- Aftershock • Jolie Moi • McBerry • Little Mistress
- Mac Duggal • Impression • Traffic People

NEW Shoe Department - stockists of Chinese Laundry!
Gorgeous maxis, holiday dresses & amazing, prom gowns!

TEL: 01925 766258 **www.dress-studio.co.uk**

FREE parking! The Warehouse Studios, Glaziers Lane, Culcheth, WA3 4AQ
Daily updates & offers on Facebook and Twitter @TheDressStudio

SALE SALE SALE SALE SALE SALE SALE SALE SALE
NOW ON! NOW ON! NOW ON! NOW ON! NOW ON! NOW ON! NOW ON! NOW ON!



HEALTHY AUDIO LIMITED
At the heart of wellbeing

Download or Hard Copy Self Help Audio Programmes include:

- Irritable Bowel
- Emotional Recovery
- Smoking Cessation
- Stress / Anxiety
- Chronic Pain
- Emotional Recover from Breast Cancer
- Insomnia and much more

or write to:
Guardian Medical Centre
Guardian Street
Warrington

For appointments or a **FREE** information sheet telephone
01925 658322
www.healthyaudio.com

Hello and welcome to my monthly column . . .

Hypnotes

by Michael Mahoney

Go for your own gold medal!

As I write this on a dark wet and windy summers morning in July my mind wanders to the Olympics and the gradual build up to the greatest sporting even in the world. A competition of the very best athletes coming together to take part in 300 events, all of them dreaming of winning a gold medal. It is expected 147 national will take part in the Paralympics too.

This event is where medals can be won or lost in a fraction of a second. The difference of being a gold medallist and a bronze medallist can be thousandths of a second, a fraction of a moment which can affect an individual for the rest of their lives. To become a household name overnight, or forgotten in moments. A place where comparisons are made, who is the best, the fastest, the most agile, who has the best stamina, and so it goes on.

However it isn't just at the Olympics that this constant comparing goes on, it goes on in everyday life. Many individuals compare themselves to others wishing they had the talents,

skills, looks, position at work, or money of someone else, and yet I believe this thinking is flawed. Many people look out at what others have or can do, rather than looking at themselves more closely.

We are all individuals, and if we are individual, that means we are a one off, we are unique. And if we are unique, then there is no one like us, and if there is no one like us, we cannot compare ourselves to others. So why do we so often go through life trying to do so?

Instead we should consider comparing ourselves, to ourselves! It isn't as strange as it might initially seem. I often ask my clients to put themselves on a scale from zero to ten. Zero being the worst (when we first met) to ten being the very best they can imagine. By doing so each time we meet, we can gauge the improvements that our working together brings. As they go higher up the scale, the more improvements they are noticing in themselves. Their focus becomes more about making positive changes to themselves, releasing and

Michael Mahoney is a Clinical Hypnotherapist. He has research, and patient trials experience. He is a member of the Hypnotherapy Association, an associate of the Primary Care Society for Gastroenterology, he is a non NHS service provider and Private Health Service Provider



Tel: 01925-658322 email timelineservices@aol.com
www.michaelmahoneyhypnotherapist.com

letting go of things no longer needed, and building new skills and belief systems.

Each moment is an end and a new beginning, a significant change or new belief or understanding can happen in a heartbeat or even quicker, in a mere moment of time. Putting energy into changing and adapting helps us to move on in life more easily. Of course many times it has to be worked at, discipline, commitment and focus are all needed, but it is worth it.

So unless you are preparing for the Olympics, consider focusing on your own uniqueness, look at pushing barriers and limitations, learning new skills and understandings and developing your own uniqueness. That way, you too will eventually feel how it feels to be your very best. You may not be an Olympic athlete and you may never win a gold Olympic medal, but you may well find that you can be perfectly you!



Go further with the 'Kingfisher'
Max user weight 130kg (300lbs), Max range up to 25 miles (40km)

ONLY £1499

60th Anniversary MillerCare

Get going with MillerCare

Happy Birthday to us!

For the last 60 years, MillerCare have provided their customers with innovative and affordable mobility solutions. To celebrate, we are launching a RANGE OF FOUR NEW SCOOTERS in this 1950s-styled promotional pack. Also don't miss out fabulous DAB Radio giveaway!

Purchase your next scooter from MillerCare and get a FREE DAB RADIO (purchase any scooter featured in our 60th anniversary leaflet and receive a free 1950s style DAB digital radio, offer ends 31st August 2012)

FREE DAB RADIO

01925 670433
1 Kingsway North, Manchester Rd, Warrington, WA1 3NL
www.millercare.co.uk

LIVING • DINING • SLEEPING • FLOORING • OCCASIONAL

FREE Local Delivery • FREE parking
Established family business

Smart FURNISHINGS

SUMMER SALE NOW ON

All carpet ranges, excluding stock carpets

15% OFF

Sherborne suites 20% OFF

15% OFF Harrison Beds

25% OFF Vale & Bridgecraft

Open: Monday - Friday 9am-5.30pm, Saturday 9am-5pm
Smart Furnishings, Chapel Ln, Stockton Heath, Warrington WA4 6LL

www.smartfurnishings.co.uk T: 01925 267518

Starlight Walkers raise over £150,000 for hospice

MORE than 1,400 women braved the elements to take part in St. Rocco's Hospice seventh Starlight Walk which took place at the new Orford Jubilee Park!

Singer Stuart Waldron and DJ Chris O'Grady kicked off the night with a two hour stage show that featured performances from northern comedienne Mrs Barbara Nice, local singer Poppy Bridge, dancers from the Appleton Thorn School of dance and a Zumba themed warm up!

Newly appointed Hospice Matron Alison White joined the Mayor of Warrington Cllr Steve Wright and his wife, Mrs Julie Wright on stage to wave the ladies off at midnight on their 6.5 or 13 mile walk through the streets of Warrington.

The walk was supported by over 200 volunteer marshals who stayed up through the night to ensure the safety of the ladies along the route, many of them brought tins of sweets

and chocolates to pass out to the ladies as they passed their checkpoint.

A team of volunteers from the Territorial Army provided refreshments.

Over £150,000 was pledged on the night which will go towards providing care and support to St. Rocco's patients and their families with more pledges still coming in!

Hospice Matron Alison said "It was fantastic to see so many ladies battling the wind and rain to take part in the Starlight Walk. So many wonderful people supported us this year. We would like to say a big thank you to Livewire Warrington and Warrington Borough Council for allowing us to host the walk from Jubilee Orford Park – it was truly an amazing event that will make a huge difference to all those we care for."

Over the last seven years over 10,000 women have raised over £1million at the St. Rocco's Hospice Starlight Walk.



No smoking code for play areas

A VOLUNTARY no smoking code has been introduced on all 95 public play areas in Warrington to deter children from taking up smoking - the single biggest cause of ill health and death.

The Play Smokefree code, launched by the borough council, aims to reduce the number of youngsters who take up smoking after being influenced by those who do. Three out of four children are aware of cigarettes before they reach the age of five, according to the heart health charity Heart of Mersey (HoM), which is behind the initiative.

"Smoking in children's play areas is a fairly common practice among teenagers and adults and as such can be perceived by youngsters as a normal activity", said Jo McCullagh from the charity.

She added, "A child who smokes just one cigarette doubles their chances of becoming a regular smoker by the age of 17. We want to use this voluntary code to de-normalise smoking in areas where children play and learn."

Although voluntary, the scheme already has strong local support. Last year, a survey of 233 Warrington residents (nearly 40 per cent of them smokers), showed that 72.1 per cent supported not smoking within playground areas.

Keeping you
independent
in your own
home



NEW STRAIGHT STAIRLIFT £1195
WITH 2 YEARS WARRANTY
QUOTE 'ORBIT 10'

AMW Lift & Mobility Services Ltd.

STAIRLIFTS • PUBLIC ACCESS LIFTS • WETROOMS
BATH LIFTS • SCOOTERS • & MUCH MORE

- NO PRESSURE SALES
- NEW & RECONDITIONED
- BREAKDOWNS & SERVICING AVAILABLE
- SUPPLIERS OF MOBILITY EQUIPMENT INCLUDING HEAVY DUTY STAIRLIFTS

Call us on: **0161 776 2131**
Email: info@amwstairlifts.co.uk www.amwstairlifts.co.uk

152a Liverpool Road, Cadishead, M44 5DD

Paperless office is still some way off

THE much-predicted age of the paperless office is still some way off despite advances in technology and a growing green agenda, said David Griffiths, a director with leading North West print and copier services provider the Sharples Group.

"However, new technology can both increase the effectiveness of in-house document management systems and give business owners a greater degree of control over their running costs", added the sales director speaking from the company's Warrington HQ.

"Although the paperless office was predicted in the mid 1970s, this was a myth as office paper consumption in the USA actually doubled between 1980 and the end of the century," added Mr Griffiths. "Here in the UK, we had a similar increase in paper use. However, volumes are now levelling off due to a variety of reasons including better systems management."

"As a company, we have a policy of using the latest technology to ensure our clients effectively manage their print and paper use. Modern software allows us to monitor the usage of

their document printing systems remotely and on an hourly basis."

"We know how many pages our client's systems are using and we can even tell them when their toner is about to run out. Remote control management, monitoring and performance tracking is key. Such a system will alert you, or your managers, when a problem occurs, even if several makes and models exist at a customer site."

"The problem could be down to a faulty printer or toner or perhaps a member of staff printing off reams of personal documents without the appropriate permission."

Mr Griffiths said despite the fact that access to on-line documentation via smart phones, iPads, laptops and The Cloud was easier than ever, a significant number of business people still preferred to have a hard copy of an important document on their desk or in their briefcase.

"There will always be a demand for printed documents in the business environment," added Mr Griffiths. "That's why it is essential to ensure your printers and copiers are right for the job you want them to do."



"Two printers may look the same but the cost per sheet printed can differ dramatically. That's why all our clients are offered our Quick View survey on their document output to establish their true cost effectiveness. On average, acting on our advice cuts their costs by 20 per cent.

For further information click onto: www.sharplesgroup.com

Mystery firm set to move on to Omega

AN outline planning application has been submitted on behalf of a mystery company which wants to be the first major occupier of premises on the Omega North development site at Warrington.

The application for 18,500sq m (200,000 sq ft) distribution warehouse has been submitted by Omega Warrington Ltd (OWL).

It would provide logistics space on a 7.24 ha (17.9 acres) plot.

If planners give the go-ahead, it would mark the start of development on Omega North, the 32 ha (80 acres) part of the larger 233 ha (575 acre), multi-million sq ft mixed-use Omega scheme at junction 8 of the M62.

Works for the new development will also include an infrastructure contract of more than £7m for an access road and associated services, which will open up Omega North for further industrial/logistics development opportunities.

Challenge us to reduce your laser printing costs by 50%



sharplesgroup

www.sharplesgroup.com

0800 195 0955

Email: enquiries@sharplesgroup.com

Tatton Court, Kingland Grange, Warrington WA1 4RR

Business

New home for 1eagu3

A NEW Rugby League players' association has set up base in Warrington, providing the perfect location for its 288 members.

With Warrington's half back Lee Briers on a committee chaired by St Helens and England forward Jon Wilkins, 1eagu3 has secured new offices and a permanent base at the Warrington International Business Centre, thanks to Warrington 2000+ and the Warrington Chamber of Commerce.

Chief Executive Ernie Benbow said: "We are delighted to have

secured a permanent home for 1eagu3 and we are sure 1eagu3 will now continue to grow and develop as a leading player within Super League.

"This would not have been possible without the help and assistance of the Warrington Chamber of Commerce and Warrington 2000+.

"They are already seeking to participate in the education and careers planning programmes that 1eagu3 are putting in place and this arrangement only serves to further solidify a wonderful



Left to right: Colin Daniels, Lee Briers, Jon Wilkins and Ernie Benbow

Celebrating 10 years of excellence



TEN years ago Adele Carr fulfilled an ambition by starting up her own business Adele Carr Financial Recruitment in Warrington to provide local independent financial recruitment consultancy to accountancy practices.

She was inspired to be a business woman by Joan Collins as Alexis Colby in 1980s TV soap Dynasty. "I loved the power dressing and lifestyle."

Adele was the first person in her family to go to university where she studied accounting and finance before qualifying as a chartered accountant at PKF in Liverpool. "I was proud to become a chartered accountant but realised after several years of auditing it was not the career for me".

She applied for a job in industry but on meeting the recruitment consultant she realised she preferred his job instead of the one he was advertising. "It struck me then that I was really a sales person who enjoyed match making and could use my experience to place candidates in finance."

After a successful corporate career in which she ran the Manchester office of Hays Accountancy Personnel she started a family. "It was not possible to work the same hours and be a full time mum, something had to give". After a spell at another small recruitment business she decided to go it alone.

The firm expanded from its Warrington base across the north west into a multi million pound operation, opening up four offices, moving into industry and commerce offering temporary in addition to permanent recruitment placing well over 1,000 financial candidates into several hundred businesses.

The business has won awards for being Start Up of the Year and Best Place to Work. Sponsored the Warrington Wolves rugby league team and raised thousands for charity.

Adele now has four children and it has been an important core value of the business for its team to enjoy a work life balance and give back to the community.

"The highlights have included helping so many people achieve their ambitions. It is still the most satisfying part of the job."

The lowlight was undoubtedly the recession which hit "like a brick wall" in 2008. "We were expanding rapidly at the time and had some very painful decisions to take." Fortunately the firm never borrowed any money from the bank and was able to recover and last year grew its turnover by nearly 50%.

"Times are tougher now than when we started ten years ago and technology has changed the way we live and work but we have a fantastic team of people in our business and I am very optimistic about the next ten years."

The firm started its ten year anniversary celebrations with a seminar for clients with motivational triathlete Dave Clamp when special guests included Warrington Wolves' winger Chris Riley and the Deputy Mayor of Warrington Peter Carey. A raffle helped raise money for St Joseph's Family Centre

partnership."

Chairman Jon Wilkin said: "1eagu3 has grown from a simple desire to give the players a greater voice within Super League to an organisation that boasts a membership of over 80% of the players within Super League. The acquisition of our own offices is a huge step forward for 1eagu3 and will allow us to provide greater help and assistance to the players."

Lee Briers added: "Having played in the town for over a decade, I am delighted that 1eagu3 has chosen its permanent base within Warrington. This town is a great rugby league town and I think it is only fitting that 1eagu3 now has its home here."

Chamber Chief Executive Colin Daniels said: "I am delighted that

the Warrington Chamber of Commerce has been able to assist 1eagu3 in finding a permanent home. Warrington is a true rugby league town and it is only right that the Chamber of Commerce does all it can to help 1eagu3 in establishing itself. I hope that the Chamber will continue to help 1eagu3 with its education and career planning programmes, which will only benefit Warrington's businesses in the future."

1eagu3 is committed to representing the views of its members and looking after player welfare, particularly when it comes off life after Rugby League.

Prior to its launch Rugby League was the only professional sport without a players' association.

RTL
Recycle Technology Ltd

Don't waste IT... Recycle it...

- Computer and IT Recycling – Free Collection
- Resale Recycle Refurbish Computer Equipment
- House and Office Clearances
- Nothing Goes to Landfill
- ISO 9001 & 14001 Registered Company

01925 24 22 23 – 07889 952 685
12C Warrington Central Trading Estate, Bewsey Road, Warrington, WA2 7LP
www.recycle-technology.co.uk | rfi@recycle-technology.co.uk

NEED MORE SPACE?

- Individual Rooms
- Business or Domestic

01925 812700
Manchester Road, Woolston
www.bigstorage.info

Warrington Walking Day 2012

UMBRELLAS, waterproofs and sun glasses were the order of the day as some 3,000 people took to the streets of Warrington as the annual Walking Day procession was blessed with mixed weather.

Although the rain held off for the start of the town's historic demonstration of Christian Witness, the rain, some times heavy, arrived while it was still winding its way through the town centre.

A heavy downpour lashed the walkers before the procession was over - more or less as the weather

forecasters had predicted.

But, as had happened before, the people of Warrington shrugged off the showers and carried on to make sure the Walk - believed to be the 178th - triumphed over the elements.

The Mayor and Mayoress, Cllr and Mrs Steve Wright took the salute from a raised dais in front of the Golden Gates as the procession left the Town Hall lawn.

The Mayor later joined walkers where he was met by eight-year-old Ibrahim Kamial who was handing out sweets..



For more pictures visit: www.warrington-worldwide.co.uk



There's something for everyone at Walton Hall Gardens

Set amidst beautiful Cheshire countryside, our Green Flag accredited Gardens are a great day out for all the family.

- Free access Children's Zoo
- Large play area
- Formal Gardens
- Coffee shop
- Pitch & Putt/Crazy Golf
- Picnic areas
- Hall available for private Hire (01925 263797 op 1)
- Championship Golf Course/Golf lessons (01925 263061)
- Full events programme (01925 601617 op 2)
- Open daily from 8am - dusk (see car park times)
- Free admission (Pay and display in car park)

Wednesday 1 August 7.00pm - 9.30pm

Outdoor Theatre - The Railway Children

Performed by the brilliant Heartbreak Productions Company
Enquires via www.pyramidparhall.co.uk
Tel: 01925 442345

Sunday 5 August 11.00am - 4.00pm

Snakes Alive! (Animal Charity Day) with the Wirral Herpetological Society

Wirral Herpetological Society will be here with their collection of snakes, spiders, lizards and other exotic animals! (Join us, down by the Children's zoo)

Wednesday 15 August 8.00pm - 10.00pm (approx)

Beginners Guide to the Night Sky

The history of Jodrell Bank and its telescopes are the focus of tonight's lecture and is aimed at beginners to the night sky. Hot food included. Tickets from www.pyramidparhall.co.uk Tel: 01925 442345

Sunday 2 September 11.00am - 4.00pm

Wedding Fayre

Planning your wedding? Then come along and see all you need in one place. There will be wedding cars, floristry, Photography and more. A barbeque and bar will be available. £1 admission fee for entry to the Hall.

Being just off the A56, only 2 miles from J11 M56, we are so easy to get to.

Off Walton Lea Road, Higher Walton, Warrington
WA4 6SN www.warrington.gov.uk/waltongardens
Tel 01925 601617 (option 2)



Major Boost as DAD comes of age

AS Warrington Disability Awareness Day came of age with its 21st anniversary at Walton Hall and Gardens, organisers were given a major boost as main sponsors, Your Housing, confirmed they would be backing next year's event.

The news came as a welcome boost for event co-ordinator Dave Thompson, MBE DL, who had feared at one stage that this year's event would have to be cancelled following heavy rain during the week.

Earlier in the year he had also feared for the very future of the whole event following the loss of funding from a variety of previous supporters.

While presenting Certificates of Appreciation to this year's backers, Dave said DAD 2012 would not have been possible without the support of Your Housing.

As Your Housing MD Brian Cronin collected his certificate he announced that the housing organisation, which recently re-located to Warrington, creating 300 jobs following the merger of Arena Housing and the Harvest Group, would be backing next year's event.

A delighted Dave said: "This is great news for the near 300

exhibitors who have turned up today. Disability Awareness Day has now become an international event but at one time I had real concerns whether it would be taking place this year following the loss of sponsorship.

"It would not have been possible without the support of Your Housing and I am delighted they have confirmed for next year - I just need to get the okay off my wife Pam now!"

Dave said he had feared the event may have to be called off following the heavy rain during the week but thanks to the dedicated hard work of volunteers and the staff at Walton Hall and Gardens, it had been a case on on with the show!

He said it had also been a difficult lead up to the event following the sudden death of team member Dave Conner, with another two members of the team hospitalised due to poor health.

With more than 32,000 properties, including 5,000 customers in the Warrington area, Your Housing is now one of the largest housing organisations in the country.

As well as supplying general housing they provide properties for people with special needs and disabilities.



Dave Thompson with Your Housing's Brian Cronin

**For more pictures from DAD visit:
www.warrington-worldwide.co.uk**

230 children need foster homes

MORE than 230 children are currently in care in Warrington and in need of long or short term foster homes

The borough council's fostering service had a good response to a series of recruitment road shows during Foster Care Fortnight - but there is still a need for more foster parents.

Fostering allowances have recently been significantly increased to encourage more people to get involved.

Cllr Colin Froggatt, the council's executive member for children and young people's services said: "We value the work of our foster carers and work hard to provide support for a task that can sometimes be challenging, but is always very rewarding.

"The increase in allowances is recognising the skills, experience and commitment of our foster carers and the role they play in working with families and in partnership with ourselves and our partner agencies.

"I genuinely hope that this increase will also encourage more people will come forward to carry out this vital role and help our young people to flourish and achieve brighter futures."

Anyone can find out more about fostering in Warrington by calling 01925 444 100 or visiting www.warrington.gov.uk/fostering

Making Space...making life better

After 30 years of caring, supporting and enabling people with mental health conditions, learning disabilities and dementia, Making Space - based right here in Warrington - is one of the UK's most influential and inspiring secondary healthcare service providers.

So, if you're affected directly, or caring for someone who is, now you know who to talk to for totally person-centred support.

FOR FURTHER INFORMATION CALL 01925 571880
EMAIL enquiries@makingspace.co.uk
OR LOG ON TO WWW.MAKINGSPACE.CO.UK

THE FREEDOM TO ENJOY AN EVERYDAY LIFE

My name is Tom, 
I am 6 years old.
When I grow up, I want to be a fireman.

Could you help Tom's dreams come true?

Fostering isn't just about putting a roof over a child's head, it's about giving them a loving home and a brighter future.

Changing lives in Warrington through **Fostering**

Contact us to see how you could change a life...
01925 444 100
or visit www.warrington.gov.uk/fostering



Warrington Collegiate

Your College, Your Story

ENROL NOW

WWW.WARRINGTON.AC.UK 01925 494494



“
WARRINGTON COLLEGIATE
CAN MOTIVATE AND INSPIRE
YOU TO PROGRESS WITHIN
YOUR CHOSEN CAREER.”

Alisha-Naomi Cooper,
Hairdressing Apprenticeship Level 1, 2 & 3

Find out why more students are
choosing Warrington Collegiate



APPRENTICESHIPS • VOCATIONAL COURSES • HIGHER EDUCATION • PROFESSIONAL QUALIFICATIONS

Warrington Collegiate, Winwick Road, Warrington WA2 8QA

Best of both worlds as private companies take over council services

THE way leisure and cultural services in Warrington are being delivered has changed with the new £30m Orford Park Jubilee Hub being a shining beacon of a new Community Interest Company (CIC).

The CICs or trusts, which have taken over running Orford Park and various other council owned buildings including the Pyramid and Parr Hall and the town's Museum, are not-for-profit organisations, which mean they can apply for grant funding to improve buildings and facilities where the council can't.

'Culture Warrington' has taken over The Pyramid and Parr Hall and Warrington Museum, while 'LiveWire' has taken over the running of the council's leisure centres, lifestyle services and libraries including Orford Jubilee Neighbourhood Hub.

The move gives residents more say in how these services are delivered in their local area.

Any operating profits will be reinvested straight back into improving and growing leisure and cultural facilities and services in the town.

The buildings still belong to the council while boards of trustees for each company, includes borough councillors, residents and prominent industry leaders, have been set up to give each organisation its strategic direction.

Jan Souness, formerly Head of Service at Warrington Borough Council, is the Managing Director of both CICs.

"We will continue to work with the council's long term investment plan for developing neighbourhood facilities," she said

"One of the main benefits is that decisions can be taken faster and quicker than in the public sector while there are also tax exemptions.

"Any profits we make will be ploughed back into the community. If we build up reserves we can work with the council to reinvest across other services.

One of the board members, Paul Taylor, from Taylor Business Park at Risley said: "Being from the private sector it has been a big eye opener for me. I have been surprised and pleased by the attitude of the staff who have come over from the council and embraced working for a private

company."

Chairman of the board, former Great Sankey Head Teacher Alan Yates added: "This has been a bold step. The council could have made cut backs as it is a non statutory service.

"But we now have the best of both worlds, working with the council but as a private company."

For more information visit www.livewirewarrington.co.uk and www.culturewarrington.co.uk



The Livewire team at Orford Park

LIVEWIRE HAS LANDED

Your new name for Leisure, Libraries and Lifestyles in Warrington

livewirewarrington.co.uk

'Live well with LiveWire'



Efes Brasserie
Italian Cuisine Since 1964 & Greek Cuisine Since 1986

**Celebrate the
 London 2012 Olympics
 and support Team GB!**

**and receive a fantastic
 25% OFF your food bill
 at Efes Brasserie**

Offer valid throughout the Summer!

Tel: 01925 632987 www.efeswarrington.com
 137 Sankey Street, Warrington, Cheshire WA1 1NN
 (Adjacent to the Golden Gates)



Soccer club's golfing success

A special fund-raising golf day in aid of Warrington Town FC proved so successful it is set to become an annual event.

Taking place at Malkins Bank Golf Club, Sandbach and organised by club director Kevin Read, the event raised more than £1,500 for club funds.

The inaugural winners of the Warrington Town Golf Day Challenge were back-of-shirt sponsors the Tailormade Group, with partner Alistair Burns in particularly fine form, with the best round of the day.

Runners up were short sponsors Peak Associates, with plumbing merchants

Trinity, featuring former Warrington Town Wembley legend Ian Kinsey in the team, coming third.

A total of 16 teams took part in the event which is an important fund-raiser in the build up to the start of the new season which kicks off on Saturday August 18.

Before then Warrington play in the annual Peace Cup against Crewe United from Lisburn, Northern Ireland on Saturday, August 4, kick off 3pm.

For full details of the club's pre-season friendlies and fixtures check out www.warringtontownfc.co.uk



Red Bank Farm Shop and Butchery

Specialising in 28 day Matured Beef direct from the family run farm

The family run farm at Newton-Le-Willows prides itself in producing happy healthy top quality Cattle, Pigs, Lambs and Free Range Eggs, ensuring the best quality meats are served in the on-site butchery and nothing is pre packed!



**OPEN
 WED-SUN
 10AM-5PM**

**New Season
 Spring Lamb Available
 to order:
 Half and Whole Lambs**



**Birds of Prey
 on display all
 year round**

We're very proud of our produce with includes all our own handmade Sausages, Burgers, Stir Frys ect.
 Beef, Pork, Lamb, Chicken, Game, Specialty products, BBQ and Christmas Meats.
 Fresh homemade Pies, Sausage Rolls, Cakes and Bread.

We also locally source a variety of Seasonal Fruit and Vegetables, Preserves, Honey, Cheese, Milk and much more!

**Call: 07824 369174 or visit www.farmshopnorthwest.co.uk
 Winwick Road, Newton-le-Willows, Warrington WA12 8DU**

Classic transport show rocks town centre

WARRINGTON town centre hosted another "classic transport show" attracting thousands of visitors to see a wide variety of vintage vehicles alongside Laurel and Hardy and Del boy!

The event was organised by Warrington Market manager Steve Pickering and proved to be another great success.

The town's community radio station Radio Warrington were on hand to entertain the crowds with interviews and a wide range of music as they broadcast on FM for a highly successful nine day period.



Awarded 5 Stars for 'Scores on the Doors' ★★★★★



Spice Lounge

BAR & RESTAURANT

FREE DRINK FOR TAKEAWAY CUSTOMERS*
*while you wait for your takeaway
Valid until 31st August

Early Diner Offer
20% off
before 6pm
Mon - Sat Only

CALL: 01925 767 777
BOOKINGS TAKEN BY EMAIL:
MAH@THESPICELOUNGE.COM
MORE OFFERS AVAILABLE ONLINE:
WWW.THESPICELOUNGE.COM
411 WARRINGTON ROAD, CULCHETH, WA3 5SW

Late Diner Offer
20% off
after 9:30pm
Fri - Sat Only

Advertiser's announcement

Flagship offices to let

TAYLOR Business Park are proud to offer one of their flagship offices to let this month. **Oakwood House** is around 1800 sq ft with an open plan layout over two floors.

The property already has ample free parking facilities, regular and disabled toilets, CAT 5 cabling and 3 compartment trunking throughout and with its close proximity to the security lodge it is ideal for security conscious companies, as are any properties on the business park.

This is one of only two properties that are currently available on the business park which has around fifty properties on it in total, so if you want to take a look around you had better be fast! All enquiries: info@TaylorBusinessPark.com or call on 01925 763851.



Call now on

01925 766044

for a free no obligation quote
or visit www.mc-es.co.uk

McLennan Electrical Services,
Unit K6, Taylor Business Park,
Risley, Warrington WA3 6BL

- Electrical installations and maintenance
- Electrical testing and certification
- Lamp replacement and disposal
- 24 hour call-out
- Display lighting
- Intruder alarms
- Access control
- Fire alarms
- Energy efficient lighting
- Data cabling infra-structure
- Maintenance contract / emergencies





your local
market

Visit Warrington Market on facebook

facebook

National Playday

Wed 1 August

Warrington town centre 10am -4pm

Celebrate National Playday with Warrington Market

Traditional Fairground Rides

Science Fiction Characters

Wolfie and Friends

Craft Workshops

Drum Workshops

Puppet Shows

Gullivers World

Battlefield Live

Market Stalls

Donkey Rides

Face Painting

Jubilee Giants

Punch & Judy

and lots of surprises...

It's all
going on in
Warrington

Warrington
families
Information service

Radio
Warrington

**warrington
worldwide**

Warrington
Borough Council



Widdows Mason

Solicitors



Lease problems

LANDLORDS BEWARE

Do not allow a Tenant to enter into possession of your property until you have written documentation to support the Terms of the Lease which you have agreed with the Tenant. You may wish to grant the Tenant a short term Lease, because you are not sure whether you may wish to use the property personally in the future. You will therefore need the Tenant to enter into a legal document excluding the provisions of sections 25/28 of the Landlord & Tenant Act 1954.

Always check the identity of the Tenant. If you are entering into a Lease with a Company check the full details of the Company, and obtain details of the last accounts of the Company. Consider whether you require Guarantors for the Company. If the Company goes under you will have no come back at all against individuals unless you have Surety Covenants.

In the written document as a

Landlord you must ensure that the Tenant is under an obligation to maintain the property in a good state of repair and condition. If this is not in writing, then at the end of the Lease Term you may not be able to serve a Schedule of Dilapidation.

TENANTS BEWARE

Make sure that the Landlord has fully insured the property and that the Insurance Company is aware of the use to which you intend to put the property. Always check the Schedule to make sure that all appropriate risks are covered.

Do not sign a Lease provided to you by the Landlord unless you have fully checked the same. Most Leases provide that you are obliged to keep the property in a good state of repair and condition. You should always insist that a Schedule of Condition is attached and that you are under no obligation to put it into any better state of repair or

condition than in the Schedule. Otherwise you may find that at the end of the Lease you have to put the property into a good state of repair and condition.

If there is a Break Notice in the Lease, or you wish the Lease to end then you must make sure that the Notice complies either with statutory requirements or with the requirements of the Lease.

It is in the interests of both a Landlord and a Tenant to instruct a Firm of Solicitors to act on Commercial Property transactions, and the pitfalls arising out of the failure to do so are frequent. To remedy a pitfall will almost invariably result in considerable dispute between Landlord and Tenant, and also considerable cost.

Quality legal advice is the key, which only comes from experience. As a Firm Widdows Mason have Commercial Property Lawyers in each of its Offices who will be only too pleased to help.



Widdows Mason

Solicitors

- Family: Divorce, children, financial disputes
Contact Amy Jones
- Property: Buying, selling, remortgage, auctions
Contact Su Wilson
- Commercial: Employment advice, landlord and tenant
Contact Jim Edwards
- Wills and Probate: Equity release etc
Contact Su Wilson or Geoff Stokes
- Accidents: On the road, in the street, at work
Contact Michael Stockton
- Crime/Police Station Attendance: (Legal Aid available)
Contact Jonathan Conder, John Barnes or Guy Dodd

FREE initial interview

Local lawyers for the local community

Criminal
Defence Service



Arundel House
12 Rylands Street
Warrington

Telephone:
01925 632267

Facsimile:
01925 445148

web:
www.widdows.co.uk

email:
info@widdows.co.uk

Community
Legal Service



Wire aim to be fittest team in league

WARRINGTON Town FC have had a busy start to pre-season training with manager Shaun Read aiming to have the "fittest team in the league".

Shaun has been busy putting the players through their paces at the new Orford Park Jubilee Hub training facility, with his brother, former England and Everton legend Peter Reid, lending a helping hand.

The £30 million Orford Park Olympic legacy facility, managed by a new community interest company Live Wire, has become the club's full-time training facility.

Shaun said: "It is a credit to the club that they have secured a top notch training facility which would be the envy of many football league clubs."

"Our aim is to have one of the fittest teams in the league this season and our goal from day one is promotion."

Meanwhile Warrington host Crewe United from Lisburn, Northern Ireland on Saturday August 4 in the annual Peace Cup at Cantilever Park, kick off 3pm

Following that they entertain Colwyn Bay in a pre-season friendly on Tuesday, August 7, kick off 7.30pm.

The league season kicks off on Saturday August 18 at home to Ossett Town. Town have been drawn away in the FA Cup at Atherton LR/Rossington Main on Saturday, August 25.

For full details of all the club's pre-season friendlies and F.A Cup matches visit www.warrington-townfc.co.uk



Shaun and Peter Reid with Live Wire board member Paul Taylor and local councillor Mike Hannon at the new Orford Park training facility and Shaun and Peter putting the players through their paces.



New kit brings cup success

LUCKY winners of the **warrington-worldwide/Decathlon** win a free football kit were Woolston Rovers Under 9s.

Winning

Winning the kit has brought instant success as the team added another trophy to their cabinet after winning the Young Lions Tournament on the Wirral following up their success from the Warrington League Junior Finals day at Cantilever Park.

The Rovers beat eight teams on the way to the final scoring 16 goals and only conceding

one.

The boys beat the local team Victoria Colts 1-0 in a nervous final. Jamie McCready scored the winning goal with only a minute left of normal time to great team celebrations.

The trophy was picked up by team captain for the day Harry Digham-Smith.

The Young Lions Trophy is added to the Warrington Challenge Cup, the Inter-Cheadle Cup and the Stockholm Shield that the team have already won this year.

CENTRAL
SELF DRIVE

Warrington's longest
established vehicle rental
company

Head Office:
20 Winwick Street
Warrington
Cheshire
WA2 7TS

Tel: 01925 444750

Email:
info@centralselldrive.co.uk

Web:
www.centralselldrive.co.uk



*Trust Central
for your local
choice in car
and van hire*

Motoring costs soaring?

Introducing
JUST DRIVE
from Central Self Drive

Pay as you go hourly car and van hire from £7.50

Just Drive

Owning your own car can be expensive and a real headache – repairs, servicing and renewing insurance, road fund licensing, MOT, not to mention which garage to use and trust, always something to worry about! But what if you could leave all that to somebody else? And just choose from a variety of new cars for a fixed low cost.

This is what Central's – Just Drive membership can do for you – all the convenience of a car without the hassle and expense of owning one. Just book your car hire online or by phone and you're sorted – quick, easy and simple

Reduce your Carbon Foot Print

The Just Drive service located between central train station and the bus station, is ideal for those who do not want to or own a car. Customers are able to walk, bike or use public transport straight to our door step and just pick up the key to your new and different car.

What one of our first customers said: "Just Drive is a great idea as I live in the town centre with nowhere to park. I can use a car for a couple of hours to go shopping. It is useful for emergency runs to visit sick relatives and check they are ok at short notice. Saves me the cost of owning a car when I can't afford to run one. Overall a great idea....sign me up!"

Janet Read

We have found so many uses for our service.

- Local business's needing an extra or bigger van for occasions up to 3 times a week but don't want the unnecessary large initial outlay, investment and depreciation of purchase

- Families looking at getting a second car with the flexibility to change the size for different occasions – To have a luxury vehicle for a day out or to go to dinner, to have a 'people-mover' to go together as a group to an event, to do "the rounds of the family" in the

run-up to Christmas. To have a better 'class' of car to attend special events i.e. weddings.

- DIY and home improvements – for those people who like to spend their spare time fixing up the home or garden, been able to pop in on weekends and hire various sizes and types of vans to get the job done. The list is pretty endless

Benefits

This card entitles customer to great benefits like:

- Tailor made price list - No need to book weeks or months in advance hoping for cheap fares.

- Hourly hire from £7 50 – pay as you go system

- Access to a wide range of new vehicles – use a specific vehicle for a specific purpose. You don't have to make do with a general purpose vehicle

- Cars with Extras – choose a bit of comfort or style for their special events, nights out or weekends away

- Excess reduction in event of accident – for peace of mind

- No deposits – use your money on your day out, not tied up in deposit

Call now and see how rental could help reduce your costs and carbon foot print!

For more information and to sign up please ask our reception or call 01925 444750

Motoring

A new breed of car

IT'S the car with coupe looks, SUV style, MPV practicality and hatchback costs - and the Hyundai ix35 has attracted thousands of new buyers to the brand.

The ix35 has built on Hyundai's impressive SUV heritage, which has seen the company continually feature in the top five brands for such vehicles across Europe.

It's an entirely new breed of car, with an appeal reaching far beyond the conventional SUV sector.

The ix35 takes up the same amount of space on the road as a C-Segment hatchback and has prices to match. But despite the compact size, the ix35 can rival an MPV for practicality.

Boot space is impressive and there are plenty of family-friendly features to keep parents and children happy and comfortable.

Efficient

With a compelling line-up of powerful and efficient petrol and diesel engines, plus fuel saving technology such as Intelligent Stop & Go (ISG), the ix35 offers incredibly efficient fuel economy and low tailpipe emissions figures.

A dynamic chassis, with advanced multi-link rear suspension and a choice of two or four-wheel-drive drivetrains adds even further versatility and driver appeal, while advanced safety systems - including standard ESP (Electronic Stability Programme) on all models - make it the perfect choice of car for family buyers.

Priced from only £17,295 on-the-road, the ix35 range has equipment levels that no rival can even dream of matching.

Unlimited-mileage warranty

It comes with five years of unlimited-mileage warranty, five years of roadside assistance, and five years of vehicle health checks. A 10-year anti-perforation corrosion warranty is

also provided, meaning that what appears attractive in the showroom will remain just as appealing for years to come.

The ix35 and the rest of the Hyundai range can be seen at Ryders of Warrington, in Athlone Road.



Don't Let The Rain Get You Down!

Summer Offers Are Scorching At Ryders

<p>New i10 Save £1350</p>  <p>Plus final payment</p>	<p>1.2 Classic Now Only £6995</p> <p>£125 £125 Deposit Month</p>	<p>New i20 Save upto £1650</p> <p>Plus £750 Deposit Allowance</p>  <p>Plus final payment</p>	<p>1.2 Active 3Dr Now Only £8545 after dep allowance</p> <p>£149 £149 Deposit Month</p>	<p>New i30 Save £1605</p> <p>Plus £900 Deposit Allowance</p>  <p>Plus final payment</p>	<p>1.4 Classic Now Only £11995 after dep allowance</p> <p>£999 £199 Deposit Month</p>
<p>New Veloster Plus £1500 Deposit Allowance</p>  <p>Plus final payment</p>	<p>Save £1505</p> <p>1.6 Now Only £14995 after dep allowance</p> <p>£2799 £199 Deposit Month</p>	<p>New ix35 Plus £1250 Deposit Allowance</p>  <p>Plus final payment</p>	<p>Save £1055</p> <p>1.6 Style Now Only £14995 after dep allowance</p> <p>£2295 £249 Deposit Month</p>	<p>New Santa Fe Plus £2000 Deposit Allowance</p>  <p>Plus final payment</p>	<p>Save £1780</p> <p>2.2 Style Diesel 5 Seat Now Only £19995 after dep allowance</p> <p>£3599 £299 Deposit Month</p>

www.rydersofwarrington.co.uk

RYDERS OF WARRINGTON
01925 369916



Athlone Road, Warrington, WA2 8JJ



Cash price	£10000
Deposit	£1400
Hyundai Deposit	£700
Amount of credit	£8300
Interest	£1408.01
48 payments of	£160.28
1 final payment of	£2001.25
Total payable	£10791.01
Based on 6000 miles per annum	

6.9%
Typical APR

Models shown for illustration purposes only. Finance subject to status, without obligation or request.

RYDERS OF WARRINGTON • RYDERS OF WARRINGTON • RYDERS OF WARRINGTON • RYDERS OF WARRINGTON • RYDERS OF WARRINGTON

RYDERS OF WARRINGTON • RYDERS OF WARRINGTON • RYDERS OF WARRINGTON • RYDERS OF WARRINGTON • RYDERS OF WARRINGTON

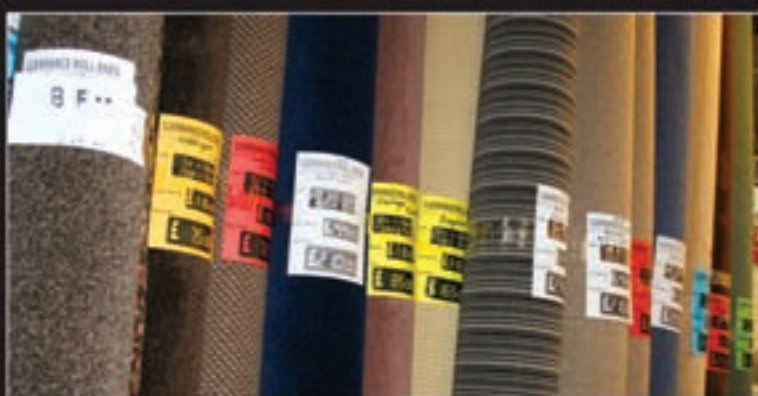
LOWTON

CARPETS

DIRECT

OPEN TO THE PUBLIC

AT LCD we always give you value for money, but we are now giving you even greater value. Not only do you get the lowest prices around, we are now giving an extra 20 per cent off plus free fitting*, free delivery*, free measuring - you will find it hard to beat our prices. We also give a price promise that we can beat any written quote for up to two months after your purchase, so you can now buy with peace of mind knowing that you got the best deal in town. Please call for a no hassle service. None of our sales people earn commission so you can be sure of honest advice, not just being pushed towards carpets that can earn the salesman more money. We are open seven days a week and look forward to seeing you.



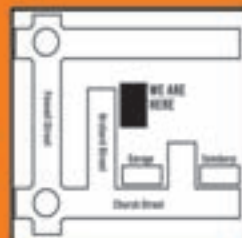
UPTO 50% OFF **PLUS AN EXTRA 20% OFF STOCK** ***FREE FITTING**

* FREE FITTING WHEN EQUIVALENT MAYFAIR UNDERLAY IS PURCHASED

Hand made rugs from just £2 and Door Mats made to measure

01925 419423

25-27 Orchard St, Warrington, WA1 2TE
BEHIND SAINSBURYS



The Butterfly House Boutique

MASSIVE SALE

- ✦ Making way for new stock
- ✦ Wedding dresses from £100

Opening Times: Tue - Fri 9.30 - 5pm | Sat 9.30 - 4.30pm

Contact Maria or Marilyn T: 01925 354365
www.butterfly-house.co.uk
3 Suez Street, Warrington, WA1 1EF



Express Mobile Tyres

01925 728811
www.expresstyres.co.uk



The tyre service that comes to you
at home or your place of work

BRIDGESTONE Continental GOODYEAR AVON
PIRELLI DUNLOP Firestone MICHELIN

Mill House Metals
Recycling the North West



We buy and sell ferrous and non-ferrous metals, skip hire, site clearance and demolition, truck and trailer exporters



T: 0151 420 3708 M: 07767 774798
Millhouse Sideings, Hale Road, Widnes, Cheshire WA8 0TL
E: millhousemetals@btconnect.com www.millhousemetals.co.uk

Boutique HOCO



We are pleased to announce the addition of **THOMAS SABO** to our Warrington store

Tel: 01925 639354
www.boutiquehoco.co.uk
17 Old Market Place
Golden Square Shopping Centre
Warrington WA1 1QB

Thomas Sabo
CREAM OF YOUR LIFE

P.S.P.
PLUMBING & HEATING SUPPLIES LTD



Unit 3-6 Bridgefoot Business Centre, Old Road, Warrington, Cheshire WA4 1AY
01925 655040
www.pspplumbingandheating.co.uk

Music and Play Therapy Services

Certified Play Therapist for children aged 3 to 17 years

Helping children with emotional and behaviour problems including:

- ADHD and children on the autistic spectrum
- Fostered and adopted children
- Anxieties
- Bereavement and many other issues



Call **07703 661126** for a free initial consultation
www.playtherapy4children.co.uk
Email: therapy4children@yahoo.co.uk

Turn your gold into cash

- ☑ sell your gold and get instant cash
- ☑ valuations on the spot & top prices paid
- ☑ loans available on your gold

ID required



18 Bridge Street, Warrington WA1 2QW
TEL: 01925 417537

CASH GENERATOR
www.cashgenerator.co.uk

Sandworlds Therapy Services

Sand has been used therapeutically for over 80 years

Helping children, adolescents and adults with emotional issues and problems to be worked through in a non-intrusive way.



Call Jane Fay on **07703 661126**
To book a consultation at Sandworlds, in Thelwall with local Practitioner in Therapeutic Sandplay
Email: sandworlds64@yahoo.co.uk

TV RENTAL, SALES & REPAIRS

Fantastic rental deals on the latest flat screen televisions

- 3D and Smart TV's • Blu-ray • LG • Linsar • Samsung
- Washing Machines • Tumble Driers • Dishwashers
- Free installation • Aftercare • Repairs
- Great offers on ex-rental tv's



Stockists of Linsar televisions

Renting allows you to keep up to date with the latest technology without any expensive outlay

JOHN LITTLER LTD
(Warrington)
A company that cares
TEL: 01925 814711
www.littlerstv.co.uk

298 - 300 Manchester Road, Warrington WA1 3RF

Get ready for Summer

Unbelievable instant inch loss and skin tightening with our **Non Surgical Laser Lipo!**
Instant Result, Non Invasive & Painless

Luxury advanced facials and body treatments
Wrinkle Relaxant, Dermal Fillers & Derma Filler

£25 Special Offer
Save £75 Laser lipo Trial

Sculpt

sculptmedspa.co.uk 01925 601761 165 London Rd, Stockton Heath, WA5 6G

Springbrook Landscapes & Nursery

- Trees & Shrubs
- Bedding Plants
- Basket Refills
- Herbaceous Plants
- Seeds & Compost
- Mower Repairs
- Heathers & Conifers
- Design & Landscaping

Rear of the Jahan Indian Restaurant
Chester Road, Walton, Warrington

01925 267085

ELECTROLYSIS CLINIC

Adele Gilbert C.G.L.I. BABTAC

Private Clinic - Thursday (*by appointment*)
held at: Newton Community Hospital
Bradlegh Road, Newton-le-Willows WA12 8RB

Treatment for:
Excess Hair • Seborrhoeic Warts • Skin Tags
Spider Naevi • Thread Veins • Melia (White Spots)

All enquiries and appointments:
Email: adelegilbert@talktalk.net
Tel: 01925 263820 Mob: 07986 175 139

ireland

MAINTENANCE & ELECTRICAL SERVICES

A local firm with over 25 years experience

TESTING & INSPECTION FIRE & SECURITY REPAIRS & MAINTENANCE

DESIGN & INSTALLATION DOMESTIC & COMMERCIAL

All work fully guaranteed and insured

01925 636 098 07762 341 976

ID PHYSIOTHERAPY

Return to physical fitness as fast as possible

- Back and neck pain
- Sports injuries
- Pain relief
- Massage
- Accupuncture

Personal injury and private health insurance welcome

Ian Davies BSc Hons, MCSP, HPC, AACP
Chartered Physiotherapist

194 Manchester Road, Warrington WA1 3AP
01925 657 443
www.idphysiotherapy.co.uk

BROMLEY TYRES

Established 1966

EXPERIENCE MATTERS

Car = Motorcycle = 4x4

492 Knutsford Road, Warrington, Cheshire WA4 1DX
Telephone: 01925 636446 www.bromleytyres.co.uk

PEST CLEAR

your local pest control experts

Local business
Fast response 24-7
No hidden extras
Fully insured
BPCA membership

Contact Mark
07970 745 565
www.pestclear.co.uk

WASP & ANT TREATMENT £35 inc VAT EACH
ALL PEST SPECIES COVERED

Provided by:
WatkinsonBlack
Chartered Accountants



Chartered Accountants
Registered Auditors

Contact
David Watkinson
or **Margaret Black**
at
1st Floor,
264 Manchester Rd
Warrington

Tel:
01925 413210

or email:
info@warringtonaccountants.co.uk
www.watkinsonblack.co.uk

Financially yours

By David Watkinson

Real Time Information (RTI) continued

Last month we looked at how Real Time Information (RTI) is going to affect the way employers interact with HM Revenue and Customs (HMRC). Basically, instead of supplying information at the end of the tax year, as at present, employers will need to submit the information to HMRC every time a payment is made.

The main reason given by HMRC for implementing this change is the new Universal Credits that are being introduced, and this will also require certain additional information, namely the hours worked by the employee in that payment period, being provided by the employer.

However, HMRC could use the information provided in a number of other ways.

Firstly, there are new penalties already in existence for late payment of PAYE. The amount of the penalty is dependent upon the number of times that the employer is late in making the payment in each tax year. Currently, however, HMRC doesn't know the exact amount that should be paid each month, and may not, therefore, be aware of any shortfall in the amount paid if

employers make a part payment by the due date. RTI will provide HMRC with this information. Additionally, it will enable HMRC to chase late payments more quickly than at present.

Secondly, there are suggestions that RTI could be used to enforce the National Minimum Wage. However, we understand that, at least initially, the information on hours worked will be restricted "bands" of hours worked, ie up to 16 hours, 16 - 30 hours, and above 30 hours. This will clearly restrict the usefulness of the information in this respect.

However, it has been suggested that HMRC could use this information to attack the low wage and high dividend payment policy used by many one-man companies when remunerating the director/shareholder. A director is not covered by the National Minimum Wage legislation in connection with his directorship. However, the suggestion is that the policy may be challenged if the hours worked on non-director duties are not remunerated at a rate exceeding the National Minimum Wage.

Finally, we quote one correspondent to a professional publication who states:



David Watkinson and Margaret Black

"The universal credit argument is a scam and another smokescreen..... HMRC will use the info to fine, penalise and terrorise small employers tying up staff collecting peanuts from the poorest, whilst the fat cat tax evaders laugh all the way to the Seychelles with their millions." He may well be right!

WatkinsonBlack are pleased to advise on these and other matters. They have considerable experience in these and other matters, including providing a very cost-effective payroll bureau service. If you want to arrange a no-obligation initial meeting on any taxation or accounting matter then please contact us. Please note that these ideas are intended to inform rather than advise and you should always obtain professional advice before taking any action.

Watkinson Black

Accountants who care for Clients who matter



Advertiser's announcement

Sandplay - there's more to it than meets the eye

Mention the word sandplay and it normally conjures up the image of children happily playing with sandpits at school or nursery, or families hurrying to the nearest beach on a sunny day clutching buckets and spades.

Not many people know that sand has also been used, for over 80 years, as a therapeutic tool - not only for children, but for adults too. Pioneered in Britain by Margaret Lowenfield in the late 1920s as a technique to help communicate non-verbally with children, it was then adapted by Dora Kalff in Switzerland, a Jungian therapist.

The way therapeutic sandplay is undertaken sounds simple enough - a 'sand tray' containing dry or wet sand is made available to the client, and the therapist encourages the client to 'make' whatever he or she likes in the sand tray. Hundreds of sandplay figures are provided should the client wish to use them within the sand tray.

Therapeutic sandplay can allow deep emotional issues to be brought to the surface, providing an opportunity for healthy change and transformation.

Jane Fay, a Practitioner in Therapeutic Sandplay, has been using sand therapeutically for the past four years in her practice in Warrington. Jane said, "Children, because of their young age, may not have the ability to verbally express how they are feeling, and sandplay can be particularly useful in allowing children, who have behaviour or emotional problems, to 'play' through

issues that are on their mind.

"Adults often approach sandplay with the objective being to explore inner feelings and emotions that they feel are hindering them and not allowing them to achieve their full potential."



Jane Fay Practitioner in Therapeutic Sandplay Sandworlds

THE NEW MEDIA CENTRE
OLD ROAD, WARRINGTON WA4 1AT
01925 240247
info@247print.net

twentyfour
seven
design & print ltd

10,000
A5
FULL COLOUR
£248.00
PAY FOR 1 SIDE
GET THE OTHER
SIDE PRINTED
FREE

500
FULL COLOUR
Digital Business Cards
(Buy 1 set, get 1 set free)
£35.00

100
A3
£38.00
FULL COLOUR
POSTERS

60"X40"
FULL COLOUR POSTERS
ONLY **£12.00 EACH**

*ALL PRICES ARE SUBJECT TO VAT

CLASSIFIED

Freephone 0800 955 5247 to advertise

ACCOUNTANCY & SAGE TRAINING

WHY TRY TO BE A PAYE EXPERT? Watkinson Black can provide a cost effective payroll service...

BATHROOMS

www.distinctive-bathrooms.co.uk THE ULTIMATE NAME IN BATHROOMS Forty years and still one of the best at creating beautiful bathrooms...

CARPET CLEANING

A1 STAINBUSTERS: Fully guaranteed carpet and upholstery deep dry cleaning. Clean & dry in only ONE hour.

SIMPLY THE BEST CARPET CLEAN YOU WILL EVER have. Cleaners UK Ltd. Est 23 yrs. Have your carpets & sofas beautifully deep cleaned...

CHILDREN'S PARTIES

CHILDREN'S BIRTHDAY PARTIES at Shellys Restaurant, 8 Bold St, Warrington. Lots of ideas for themes, pirates, princess, musical, baking parties.

CLIMATE CONTROL

CLIMATE CONTROL BY WARRINGTON based 4 Seasons, for offices, shops, surgeries, schools, homes and conservatories like yours!

COUNSELLING

COUNSELLING & MEDIATION SERVICE for individuals, couples and families. Qualified and experienced practitioners can help you work it out.

DENTAL LABORATORY

Active Dental Laboratory Ltd BROKEN DENTURES? You need a professional denture repair service. Active Dental Laboratory offers a range of denture services...

Reach 1,000s of potential clients by promoting your products or services on these pages Call us FREE now to find out how we can help you 0800 955 5247

DELIVERY SERVICES

FURNITURE FERRY LIGHT REMOVALS. Collections arranged from Ikea, Costco and other stores, garden centres, auctions etc.

ELECTRICAL CONTRACTORS

EVERGREEN ELECTRICAL CONTRACTING. NICEIC approved contractor. For lights and sockets to rewires, fuse-box upgrades. Qualified electrician.

TRUST PROPERTY ELECTRICAL SERVICES. NICEIC Part P Approved Contractor. All Electrical work undertaken. Inspection & Testing & PAT Testing.

EQUESTRIAN

HORSE RUG WASHING, TOP TURNOUT. We will collect, wash, re-proof, repair and return them to you. Call us now for a quotation.

FIRES & FIRE SURROUNDS

Quality Fireplaces at Affordable Prices WARRINGTON FIRE SURROUNDS Surround & Marble Only £299 Quality Value Service Guaranteed 01925 417731

FLOOR COVERING

FLOORPLAN - for all your flooring needs. Carpets, Laminates, Wooden Flooring, Vinyls. 1 Fennel Street, Warrington, WA1 2PA.

PAUL BAINS FLOORING SOLUTIONS LTD. Carpets, wood, laminates, decorative vinyl flooring, free choose at home service.

GARDENING SERVICES

LAWN AND SPORTS GROUND DRAINAGE IN ONE DAY. No digging, no repairs. Providing for the larger grassed areas, picture and formal lawns.

M J NEEDHAM LANDSCAPES Award winning with over 15 years experience. All aspects of landscaping, specialist in bespoke construction.

GATES

Village Gates Manufactures and installers of quality timber gates villagegates.co.uk For free quotes and advice call 01925 766629

HEALTH & FITNESS

TRACEY L J BOLD PILATES & PERSONAL TRAINING. Fitness/ spinning classes. 1 New Cut Lane, Woolston WA1 4AG.

HYPNOTHERAPY

MICHAEL MAHONEY clinical hypnotherapist for IBS, Stress, Anxiety and many other problems. Medical Research project experience, BUPA Service Provider.

IT / COMPUTER SUPPORT

pro-networks Are your IT costs giving you a headache? If so we can help! Call Pro-Networks on 0844 414 1940

JOINERY

FORWOOD JOINERY LTD HIGH QUALITY windows, doors, conservatories, fascias & gutterings. All aspects of glazing & carpentry work including traditional stained glass panels.

LEISURE BREAKS

Bridgewater Canal Leisure Breaks Exclusive Leisure Breaks On Board A New 57' Luxury DABO Huntboat

LOGS

LOGS, SMOKELESS FUELS, KINDLING and CHARCOAL. Stock up you log stores now, ready for winter Summer discounts. Buy on line, delivery or self collect.

OPTICIANS

THOROUGH EYE EXAMINATIONS followed by professional personal dispensing in a "no hurry" atmosphere. All types of contact lenses including single vision, toric, and multifocal in soft or gas permeable materials.

PAINTING & DECORATING

STRIP 4 U, ALL STAIRCASES, WALLS, CEILINGS, Artex and woodwork professionally stripped. Quality painting and decorating service for interior/exterior.

PEST CONTROL

ATLAS ENVIRONMENTAL SOLUTIONS All pests eradicated WASP TREATMENT ONLY £35 Beware of companies offering a 'cheap' service, once on site their attitude and price usually change!

PETS

HOME DOG TRAINING. We come you to solve your dog's problems. Any problem, any breed, any age, any time. Aggression, pulling (jumping up, barking, puppy training etc.

PLUMBING

AMBER PLUMBING SERVICES. Local honest, professional and friendly plumber. All domestic plumbing work undertaken including fully fitted bathrooms and wall and floor tiling.

PRINTER CONSUMABLES

WHEN IT RUNS OUT POP IN AND SEE HOW MUCH MONEY YOU COULD SAVE TODAY! 5 London Road, Stockton Heath, Warrington, WA4 6SS 01925 600633

SEWING MACHINES

J&P Sewing Machines New & Used Sewing Machines Overlockers, Embroidery Machines & Dressforms Sewing of all makes Tel: 01925 633831

TAROT READING

TAROT READINGS from experienced psychic, readings in your own home or you come to me. Why not host a tarot party? Call Julie on Mobile 07967 695929 or 0844 443 8773 or 01925 795230

TREE SURGERY

ROBERT WOOLSTENCROFT TREE SERVICES. Commercial and Domestic tree and Landscaping services. NPTC qualified, Safe Contractor approved and fully insured.

TUITION

SPANISH LESSONS IN CULCHETH Daytime tuition in Spanish grammar for adults - beginners or revision. Experienced retired tutor; friendly relaxed lessons for singles or couples.

VEHICLES SALES

PARKVIEW CAR SALES We buy and sell QUALITY CARS Best price paid Telephone Peter on 01925 575737 / 07957 545479 23 Padgate Lane Padgate, Warrington Cheshire, WA1 3RS

WINDOWS & GLAZING

SP GLAZING for all your glazing requirements, double glazed units including failed and misted units, broke windows, mirror fixing. Kite marked to B/S. Time served glazier with over 30 years experience.

ROSS

Quality Protective & Safety Wear

Quality Footwear For Any Budget



£30

HIM5555



£20

BR1400



£10

FW10