

VILLAGE

Cheshire's Community Magazine *life*

Cheshire's Community Magazine

Issue 139 October 2012 FREE

 **QualitySolicitors**
Forsham Davies Ridgway

For whatever life brings.

01925 604713

Office in Stockton Heath

qualitysolicitors.com/fdr

Top 20 for Tatton

Page 4

WIN
A FULL BODY
MAKEOVER WORTH
£1,000
SEE PAGE 10



DREAM DOORS[®]
NEW LIFE FOR OLD KITCHENS

Visit our Showroom:
92 Knutsford Road,
Grappenhall,
Warrington WA4 2PJ

Call NOW to book your
FREE ESTIMATE today
on 01925 211308

David Mowat MP is pleased to launch the Warrington Jobs Clubs

12 week back-to-work program & business start-up advice centre. Last Christmas everyone on the programme secured employment and we aim to achieve the same again.

- Free Mentoring Sessions
- Guest Speakers from Industry
- Access to Networking Events



If you would like to attend this **FREE** programme, please contact Anna Sharkey on **01925 231 267**

David Mowat
Member of Parliament for Warrington South
www.davidmowat.org

The co-operative funeralcare

Our caring staff are here to listen and advise you, 24 hours a day, 7 days a week.

- Pre-Paid Funeral Plans for complete peace of mind.
- Relieve the emotional and financial burden on family and friends.

Stockton Heath 63 London Road
01925 262 000

Warrington Bewsey Road
01925 445 555



Indian restaurant closes its doors

ONE of the longest-established Indian restaurants in Stockton Heath has announced that it is to close its doors.

The Hilal Restaurant, in Walton Road, opened its doors more than 30 years ago.

In a statement, the restaurant said: "The Hilal has been serving the community for more than 30 years and has played an integral part in the growth and success of Stockton Heath."

"We have been at the heart of Indian cuisine in the village, having had the pleasure of serving generations of clientele."

The Hilal was originally in the centre of the village, in Victoria Square. But when the village centre was redeveloped, the restaurant moved to Walton Road.

Whites Sports
Warrington Market
1901 - 2001 - 100 YEARS OF EXCELLENCE

Specialists in:
Darts, Bowls, Snooker, Air Guns, Walking Sticks, Warrington Town Merchandise, Rugby, Cricket, Football

GIFT VOUCHERS AVAILABLE

Telephone/Fax:
01925 631531



Copy deadline for the November issue is October 18

We Clean Ovens ...so you don't have to!

Call us today to leave your cooking appliances sparkling, using our eco friendly products.

oven
oven valeting service
Local | National | Affordable

Our oven cleaning experts will leave you free to enjoy your valuable leisure time.

Call for LOCAL service
01925 453377 oven.co.uk




Having dementia hasn't stopped my father enjoying life.

- Nursing Care
- Residential Care
- Dementia Care
- Respite Care and Short Breaks
- Day Care

Coming to terms with my father's dementia was difficult. I was desperate to find him the best possible care. Then I learnt about the Memory Lane Community at Barchester's Cheshire Grange. The specialist staff are truly wonderful. Thanks to them he can still enjoy some of his favourite hobbies and they treat him with the utmost respect.

Dementia can be a cruel illness but my father's carers are the kindest people I've ever met.

Thank you, Cheshire Grange!

Why not call us on **Tel: 01925 750 670** or drop in for a chat over a cup of tea?
www.barchester.com



BARCHESTER
Celebrating life

Cheshire Grange Booths Hill Road, Lymm, Cheshire, WA13 0EG



Editor

Gary Skentelbery

Production

Paul Walker

Account Executives

James Balme

Nick White

Tony Record

Advertising

Freephone

0800 955 5247

Editorial

01925 623632

Email

info@warrington-worldwide.co.uk

Websites

www.culchethlife.com

www.frodshamlife.co.uk

www.lymmlife.co.uk

www.village-life.co.uk

www.warrington.tv

www.warrington-worldwide.co.uk

AddressNew Media Centre
Old Road, Warrington
Cheshire WA4 1AT**Distribution**

Village Life is distributed freely to selected homes throughout the area as well as being available to pick up from various outlets, some of which are listed below.

Appleton:

Village Hall, Co-op

Grappenhall:

Co-op, Community Centre

High Legh:Garden Centre,
Village Hall**Lower Walton:**

Spar Shop

Mere:Village Store,
Parish Club**Stockton Heath:**

Co-op, Library

Stretton:Beehive Stores
Stretton Newsagents**Thelwall:**

Post Office

Knutsford:Fryers Garden Centre,
Library, Heritage Centre,
Shaw Heath Social Club,
Mr Chips**Mobberley:**

Rajar Building

*Village Life is published monthly by Orbit News Ltd.**The contents of this magazine are fully protected by copyright and may not be reprinted or reproduced without prior permission of the publishers.**The publishers are not liable for any statement made or opinion expressed by third parties in this publication.**Printed by TwentyFourSeven*

Opinion

ANY tears shed in the Daresbury area over the deluge that forced the abandonment of the Creamfields festival are likely to have been of the crocodile variety. Indeed, the sodden fields, transformed so quickly into seas of mud, would have been more suitable for crocodiles than pop fans.

It is the second year in succession that the festival has been hit by the weather and by far the worst debacle yet. Last year, the revellers were able to carry on revelling, provided they did not mind getting a little muddy in the process.

This year, the event organisers and the police were in agreement that it would be dangerous for the festival to continue and on the Sunday morning the gates were closed. All that remained was to get those people inside the festival grounds out safely.

This was done without serious mishap, and this is to the credit of the police and the organisers.

The question that now remains is whether or not farmland at Daresbury, or anywhere else for that matter, is a suitable location for a pop festival attracting upwards of 50,000 people.

Creamfields, it would appear, still believe it is, for they are already advertising tickets for next year's event. But we seem to recall that in the early days, nearby residents opposed to moving Creamfields from its former urban location in Liverpool to the green fields of Daresbury, warned of the possibility of a washout similar to that experienced this year.

These people, who have now endured seven years of Creamfields, with its attendant noise, traffic and general disruption, can now be forgiven if they are saying: "We told you so."

They could also be forgiven if they again ask Creamfields to go away.

PEDESTRIANISATION seldom seems to help business in a shopping street, so the Knutsford Town Plan steering group is right to suggest that long-standing proposals to ban vehicles from King Street – the town's main shopping street – should be abandoned.

True, it is a long, narrow street that struggles to cope with the number of vehicles it attracts – particularly on Saturdays. But the town's unique character owes much to the hustle and bustle of King Street – and that includes traffic.

The consultation into the Town Plan has shown that most people do not favour pedestrianisation, even for part of the street, part of the time. At the same time, most people accept that something needs doing.

Provision of pavements on both sides of the road throughout its length may well be the answer, although clearly there are places where the narrowness of the carriageway would make this difficult.

Whatever is eventually decided, care needs to be taken to ensure no section of the street is disadvantaged.

Pre-school is outstanding



ST Matthews' Pre-School at Stretton has been judged "outstanding" by the education watchdog, Ofsted.

An inspector who visited the pre-school earlier in the summer says the school is "outstanding in all areas".

She says the pre-school, which is run by a committee of parents and has a staff of seven, is a "friendly and very inclusive setting" with "highly dedicated and experienced staff".

Safety and safeguarding were praised by the inspector who stated that "expert care is taken to ensure children are kept safe at all times".

The pre-school currently caters for 35 children aged 2-4, with a maximum of 20 present at any one time.

Ofsted adds: "To further improve the high quality early years provision, the pre-school should consider extending systems for parents and carers to contribute to the ongoing

observation and assessment process to inform future planning."

A spokesperson for the pre-school said: "We are delighted with the result. It is a true reflection of all the hard work and planning which takes place to ensure the children are happy, safe and make excellent progress towards their early learning goals".

Further information is available from the website www.stmatthewspreschoolstretton.btik.com or by emailing stmatthewspreschool@yahoo.co.uk

Tatton is in the top 20

TATTON Park is one of England's 20 top visitor attractions - and that's official.

Visit England, the national tourist board, has ranked the former home of Lord Egerton of Tatton, as 17th in the league table of paid-for attractions across the country.

This places it in the same league as the Tower of London, Westminster Abbey, the Houses of Parliament, London Zoo and St Paul's Cathedral.

A record breaking 845,000 people visited the park last year - a 10 per cent increase over the previous year compared with an average increase of three per cent across all England's attractions.

Events such as the Alice in Wonderland Easter, a new "Foodies" festival and the centenary of Tatton's Japanese garden helped boost the numbers.

A five year development programme has already been announced to boost visitor numbers even more with the aim of claiming a top 10 position by 2016-17.

But this includes the controversial BeWILDerwood adventure playground which has attracted significant opposition from nearby residents and from Knutsford Town Council.

Less controversially, it is also planned to expand the park's Home Farm, which is already a major visitor attraction, and the shopping and dining offer.



Conference, meeting and banqueting facilities have already undergone a significant upgrade, including the introduction of a new boardroom.

Meanwhile, the Home Farm has a new attraction to draw crowds – the first-ever donkey foal to be born at Tatton.

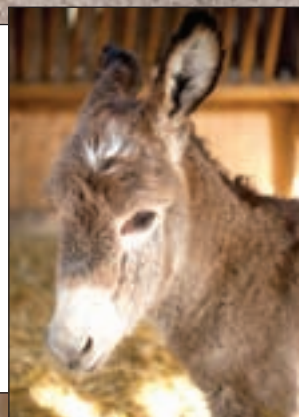
The foal was born to 12-year-old Seren unexpectedly. Staff arrived one day to find the new arrival and were really proud of Seren for giving birth with no assistance whatsoever.

Now they are hoping their other

donkey, Frosty, will provide them with another foal in the near future.

Donkeys have been firm favourites at Tatton since a rescue animal was introduced more than 25 years ago.

Farm assistant Lisa Kennedy said: "We are over the moon with this delightful little donkey. He is adorable. Like his father he has the most gorgeous chocolate colouring and a quirky star marking on his forehead. His name is yet to be decided and we've had some great suggestions from our visitors".



UK Breaks

If you choose a short break in the UK, we can book this for you to include theatre and rail. Golf breaks are very popular ie 1 or 2 night's dinner, bed & breakfast, 2 rounds of golf and guaranteed tee times, locations around the UK include St Austrell, Southampton, Edinburgh, Kelso, Morley, Peebles, etc

As an alternative a Spa break would leave behind the pressures of everyday life, choices range from Champneys, other hotels range from Scotland-London-Bournemouth. We can book rail travel for your spa break if you prefer this to driving. These breaks include 1 night hotel accommodation, dinner and breakfast, use of hotel facilities and spa treatments as offered.

Another option for that special occasion and fine dining, a trip on the Northern Belle is well worth experiencing A trip to Edinburgh and the Royal Yacht Britannia , London Christmas shopping day trip, Historic York etc. The Northern Belle train has the luxury and style of 1930's Belle trains with hand decorated interiors and enjoy a glass of Champagne whilst sitting in your armchair at your table dressed with silver, fine porcelain, crystal and fresh flowers.

Activity experiences as a gift are becoming more popular ie Tea for 2 in Harrods, Blenheim Palace & Champagne Afternoon Tea for 2, Bungee jumping, Chocolate Delight Workshop. Quad Bike

Thrill, Wine Tasting Evening for 2, Airkik Indoor Skydiving and many more

Why not have a special weekend away? combine this with tickets for artists at O2 Arena in London, Edinburgh Tattoo, Royal Albert Hall, Royal Opera House, Theatres, Buckingham Palace tours, Murder Mystery Breaks, Tribute Breaks, Paranormal Activity Breaks, Theme Park and Attraction Breaks and



Keep the village alive support your local traders!



■ Linda Crowder – Stockton Heath Travel

many more.

Call us for your quote 01925 269400 or email enquiries @stocktonheathtravel.com

Follow us on Twitter & LinkedIn, like us on Facebook.

STOCKTON HEATH TRAVEL

Special Offers

One Direction & 1 night hotel 4* Hotel
 Tickets for O2 Arena plus 1 night B&B in a 4* hotel
From £135 per person based on 2 people sharing

Lapland Day Trips
 16th Dec from Manchester
 19th Dec from Manchester
 22nd Dec from Manchester
 other dates available
£449 per adult
£399 per child

Edinburgh 1 night Spa Break
 Includes 1 x 55 mins massage
 Access to Thermal Suite/Hydro
 Pool 1 night B&B hotel 5*
From £227 per person based on 2 people sharing

Stockton Heath Travel Centre
01925 269400
 80 London Road
 Stockton Heath
 enquiries@stocktonheathtravel.com

WE PAY THE VAT!
 This month only

Up to 40% less than a new fitted kitchen with made to measure replacement doors

- Senior Citizen Discount
- From doors to complete kitchens
- Less cost, less time, less mess
- Huge choice of Doors, Worktops, Appliances, Sinks & Taps

DREAM DOORS®
 NEW LIFE FOR OLD KITCHENS

Visit our Showroom; 92 Knutsford Road, Grappenhall, Warrington WA4 2PJ

Call 01925 211308
 www.dreamdoors.co.uk

13 YEARS

LIVING • DINING • SLEEPING • FLOORING • OCCASIONAL

Smart FURNISHINGS

WIDE CHOICE OF FLOORING

All stock carpets include underlay & fitting

PERGO QUICK STEP

CARPETS • VINYL LAMINATES and much more

Smart Furnishings, Chapel Ln, Stockton Heath, Warrington WA4 6LL

www.smart-furnishings.co.uk
T: 01925 267518

Mon-Fri 9am-5.30pm, Sat 9am-5pm

FREE Local Delivery • FREE parking • Established family business

ANOTHER OUTSTANDING YEAR AT PRIESTLEY COLLEGE

Just some of our best individual successes



EMILY HILL
Great Sankey High School
A*AA
Liverpool



ANDREW GRIFFITHS
Bridgewater
A*A*AA
Liverpool



JOE CORNWELL
William Beamont
A*AAA
Manchester



JOE PENNINGTON
Bridgewater
A*AA
Warwick or Oxford



REBECCA TINNION
Culcheth High
A*AA
Leeds



JOE BROWN
Penketh High School
A*A*AA
Oxford



AMY FLINN
Cardinal Newman
A*A*A
York



CALUM SMITH
St Gregory's
A*A*A
Joining the RAF

PRIESTLEY ◆◆◆ COLLEGE ◆◆◆

Loushers Lane, Warrington,
WA4 6RD
01925 415415



DON'T MISS OUT ON A 2013 PLACE

VISIT ONE OF OUR OPEN EVENTS TO FIND OUT
MORE ABOUT COLLEGE LIFE

Wed 17 Oct

5:30pm to 8:30pm

Thurs 18 Oct

5:30pm to 8:30pm

Thurs 8 Nov

5:30pm to 8:30pm

Sat 10 Nov

10:00am to 1:00pm





Mudfields – the new name for Creamfields

THE torrential rain which wiped out the final day of the Creamfields festival has raised new questions about the suitability of farmland at Daresbury for an event attracting more than 50,000 people.

It was the second year in succession the festival had been hit by heavy rain - but the first time organisers had to close the gates and announce a cancellation.

Thousands of pop music fans were turned away on the final day - and hundreds were temporarily trapped in fields which suddenly became swampland.

The overnight camping area was reduced to a sea of mud, with tents almost submerged.

Cars were trapped in the parking areas, with water up to their axles.

People living near the site, who for the last seven years have argued that it is not suitable for the event, were quick to reignite the debate.

Residents of the A56 Chester Road complained that the road was flooded with muddy water, making the surface

treacherous.

Local councillors had, as usual, been keeping a close watch on the situation around the festival site.

Cllr Brian Axcell, of Appleton Parish Council, said: "We did not get the usual complaints about noise. But I saw lots of people smothered in mud and I was astonished at the way the site became a sea of mud. I would think it will take a long time for the fields to recover."

Cllr Sharon Harris, also of Appleton Parish Council, said: "I live near the site and have always warned that if there was heavy rain it would be a disaster.

"There must be many more suitable sites for a festival like this - it needs a large area of hardstanding.

"I felt awfully sorry for the young people involved, some of who had paid as much as £400 to attend. They looked as though they had been in a mud bath and many couldn't get transport home.

"Flooding was bad in several places on the A56 and it was made worse by all the mud carried off the festival site



by vehicles leaving.

"If I was organising Creamfields I would be looking for another site - but I don't suppose that will happen because they would have to seek another licence."

In fact, Creamfields tickets for next year's event are already on sale for the same site.

Thousands of people were entitled to refunds as a result of the cancellation of the final day of the

three night event. Some were offered full refunds and others 50 per cent refunds.

Police praised the fans for their behaviour during the evacuation of the site and also the organisers. No serious injuries were reported.

But it is likely there will be calls for the festival to be moved to a new site - particularly in the light of long term forecasts of wetter summers.

Dr Jazz offer glitzy night of fun

A GLITZY night of fun is promised when Dr Jazz and the Cheshire Cats celebrate 10 years of music at a Hollywood Ball to raise funds for Oxfam.

The Lymm-based big band is joining the South Warrington Oxfam Fundraising Group, organisers of the event, at the Park Royal Hotel, Stretton on November 2.

The night promises a three-course meal, Hollywood tunes and dancing. The band has played at venues throughout the country and this summer were a sell-out at both Stockton Heath and Lymm Festivals.

Dr Jazz, aka Dr Catherine Tackley music lecturer at The Open University, said: "We can't believe it's 10 years since we started on this journey. We've played as far a field as Dublin, Cornwall and Durham, but always love to perform in front of our home crowd, so it is wonderful to be able to put on such a grand show back in Cheshire. We are, after all, the Cheshire Cats!"

The South Warrington Oxfam Fundraising Group only started last year and is quickly becoming one of the most successful Oxfam fundraising groups in the UK. It raised more than £2,000 in its first year through bucket collections, ukulele busking, craft fairs and a sponsored walk.

Chairwoman Tracy Woods is also the bass player in the band. She said: "Putting on this kind of event has always been my dream, it will be so glamorous! It is such a fantastic opportunity to bring my two passions together - playing in a great band whilst raising money for such a good cause. I'm so grateful to The Cats for agreeing to share their 10 year anniversary celebrations with Oxfam."

Tickets for the event are available at www.dr-jazz.co.uk or by ringing Beverley on 07515 367684.



coverings soft furnishing blinds

10% OFF
all fabrics, carpets
& wallpaper
with this advert

Xross interiors

16 The Cross Lymm Cheshire WA13 0HU
T: 01925 758 298
E: xrossinteriors@live.co.uk

- curtains •
- blinds •
- carpets •
- wallpaper •
- vinyls •
- poles & tracks •
- giftware •

carpets wallcoverings soft furnishing blinds giftware for the home soft furnishing blinds carpets wallcoverings soft furnishing blinds giftware for the home soft furnishing blinds carpets wallcoverings soft furnishing blinds giftware for the home soft furnishing blinds carpets wallcoverings soft furnishing blinds giftware for the home soft furnishing blinds



Beechwood Turf Ltd



**FREE BAG OF BARK
WITH ANY ORDERS
OVER 10 ROLLS**

WHILE STOCKS LAST!

- Rolawn Medallion Turf
- Amenity Turf
- Top Soil, Topdressing & Compost
- Landscaping & Play Bark
- Lawn Seed & Fertiliser
- Delivery Service Available
- Machinery Hire/Turf Cutter & Rotivator
- Landscaping Services



01925 765605
07854 083079

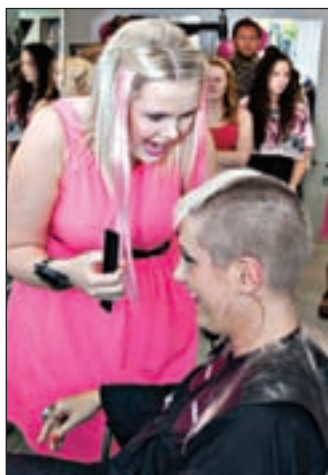


Primrose Hill Nurseries Warrington Rd, High Legh
WA16 0SQ. On the A50 towards Knutsford,
after Lymm Services

Hairdresser's kindest cut of all

HAIRDRESSER Claire Mendham underwent the kindest cut of all to support her mum's brave battle with breast cancer - with a sponsored head shave.

Claire, who runs the Toni & Guy franchise in Stockton Heath, decided



to shed her blonde locks, knowing how tough losing her hair will be for her 63-year-old mum Maureen, who was diagnosed the same day she retired from nursing, having previously also worked as a Marie Curie Cancer Care nurse.

Maureen has already undergone a mastectomy and is now awaiting chemotherapy.

Claire said: "Being in my trade for so many years puts me in touch with women going through chemo. It's heart breaking to listen to their stories.

"However it makes me feel very positive about my mum's breast cancer as I've heard so many amazing success stories.

"We have a very close and strong family and our mum is the strongest woman we know.

"Out of everything my mum will go through, losing her hair will be the toughest for her, as it is for so many women. So I have decided to have my head shaved to show her how it will grow back"

Claire and her team have so far raised over £2,200 for the Breast Cancer Care Charity and are still looking for more support.

Boyfriend Chris joined in by having a scalp bleach sporting a dashing baby pink colour too!

Donations can still be made at the salon or online at www.justgiving.com/clairemendham

■ Pictures show hairdresser Claire Mendham before headshave with left, hairdresser Rebecca Duane and her mother Maureen and after headshave with left, boyfriend Chris Birtles who had his hair coloured pink.



Jo's cycling challenge

A woman who was diagnosed with a rare kidney disease is embarking on a 200km cycle ride to raise funds for charity.

So far Jo Carter, 44, of Stockton Heath, has raised more than £800 and she is looking for local people to support her.

Money, from the ride at the end of September will go to Kidney Research UK and SADS UK (Sudden Arrhythmic Death Syndrome).

She is cycling from the Holiday Inn Runcorn, to sister hotels in Stoke and Chester, before returning to Runcorn.

She said: "In February 2011, I was diagnosed with a very rare kidney disease called 'Goodpastures Syndrome'. This is an auto immune disease whereby your own antibodies start to destroy your own organs. I underwent two weeks of intensive care at the Royal Liverpool Hospital. This involved eight days of plasma exchange, to help save my kidneys and get rid of all the bad anti bodies."

Jo had six months of chemotherapy and needs a lot of medication, but 18 months on she has 50 per cent kidney function. She says she needs lots of drugs to keep the condition under

control, but is starting to regain her health and fitness levels.

She said: "Prior to my diagnosis, I had felt fatigued for about a year, but still tried to maintain my fitness levels by playing squash, golf and cycling, although it was hard work. With 'Goodpastures' your antibodies attack your body without you realising it.

"I decided last October to do something for charity, to give something back to the community. This is why I decided to do this challenge. I chose Kidney Research UK as it is close to my heart. SADS UK, I have chosen in memory of Neil Johnson, a work colleague who died suddenly in February 2012, whilst playing 5 a side football with his friends."

She was joined on the ride by husband Ian and friend Pip, and trained hard for the event.

Anyone who wants to sponsor Jo can still do so via <https://www.justgiving.com/teams/jo-scyclingodyssey>



World's first plug-in hybrid SUV

MITSUBISHI are hailing their new **Outlander PHEV** as the world's first plug-in hybrid SUV.

It offers the best of three worlds - the environmental performance of an electric vehicle (EV), the cruising range of a conventional internal combustion engine (ICE) vehicle, and the on and off road performance of an SUV.

Using the plug-in hybrid EV system powertrain developed by Mitsubishi and derived from its line-up of all-electric models, the vehicle is due to be available some time next year.

The PHEV is, however, based on the Outlander, which made its debut in Russia in July and is being introduced in other European markets around now.

It uses electrical power stored in the drive battery by charging either at home, a charging station or when the system recovers energy when decelerating.

It aims to achieve more than 61km per litre and a cruising range in excess of 880 km, which is on a par with a conventional ICE-powered car.



Aesthetic & advanced beauty with our experienced Doctors & Therapists

Sculpt
medi spa

Derma roller treatments

Instant face lifts & facial contouring

Acne & emergency spot clinic

Lip enhancement & wrinkle relaxants

Advanced facials, beauty treatments & peels

Cellulite/stretch mark/tattoo removal

Instant inch loss with unbelievable laser lipo

Luxury body treatments

Tel: 01925 601761
165 London Road, Stockton Heath, Warrington WA4 3TD
www.sculptmedispa.co.uk

Competition worth over £1,000

to enter, simply email: Name, date of birth, address and telephone number to: info@sculptmedispa.co.uk or drop in to the shop
Closing date: 1st November

Get the A List treatment from Sculpt Medi Spa



To celebrate Sculpt Medi Spa's 1st birthday, one lucky reader will win a full body make over worth over £1000. Since opening its glamorous doors in Stockton Heath last year, the ultra modern, luxury spa has delivered fabulous results for its customers including celebrity clients and international jet setters. Sculpt's Manager, Natalie Hopkins, is keen to stress that celebrity or not all clients receive an indulgent VIP service with an amazing loyalty scheme that rewards regular customers with free treatments and closed door, red carpet events. Natalie says "We have clients from all over the North West and a few from abroad who keep returning to Sculpt. We are proud of what we have achieved in such a short space of time. Customers love our discretion, attention to detail and the fact that whether customers are having a facial or more aesthetic procedure, they are in the safest of hands, having the very best and finest products available." Natalie went on to say "Often customers can't believe how competitively priced we are to even traditional beauty salons, yet they receive state of the art treatment, that is usually only available to celebrities and A-listers. We have so many hand written testimonies and before & after photos testifying that we offer non surgical alternatives with real results! We have already added a host of new treatments over the past twelve months and are in exciting talks to bring some treatments over from LA, that will be exclusively available through Sculpt outside of London."

1st Birthday Offer
Buy 1 get 1 FREE on Beauty & Body Treatments

Provided by:
WatkinsonBlack
Chartered Accountants



Chartered Accountants

Registered Auditors

Contact
David Watkinson
or **Margaret Black**
at:
1st Floor,
264 Manchester Rd
Warrington

Tel:
01925 413210

or email:
info@warrington
accountants.co.uk
www.watkinson
black.co.uk

Money Column

By Margaret Black

Saving you from fines, penalties and possible interest

As a firm of accountants we have approximately 100 days before the final deadline of 31st January 2013 for the preparation and submission of electronic self assessment tax returns for the year to 5th April 2012.

To prepare and submit a tax return, we need the following:

- To gather and receive the information
- Process the information
- Prepare tax return(s)
- Obtain agreement signature on the return from the tax payer, and finally
- Submit return on line!

Note:

The most common income that is not reported is that of 'rental' income, usually because the recipient believes they are paying out more than they are receiving.

This may very well be the case, however, untaxed income should always be reported.

Please note at this point, that any type of untaxed income is better to have been reported by the tax payer than for the Inland Revenue to establish unreported income by using one of the many of their own methods. The most common for this type of income is that of 'Housing Benefit'. If they happen to be looking at a document that shows a landlord is in receipt of 'Housing Benefit' and it has not been reported as untaxed income on a tax return then the Landlord could face penalties, fines and possible interest on unpaid tax.

Reporting rental income in this way can also prove to be beneficial as it may well be that the Landlord has made a loss. If the losses have been reported properly on a tax return these can be brought forward



David Watkinson and Margaret Black

to offset against future years' profits. Having read this notice, do you now believe you may need to submit a self assessment tax return to 5th April 2012, we recommend that you do not leave it too much longer and if you need any assistance please do not hesitate to contact us and make an appointment.

Telephone 01925 413210 or e-mail on margaret@warringtonaccountants.co.uk

The Money Column provided by WatkinsonBlack Chartered Accountants. 1st Floor, 264 Manchester Road, Warrington, WA1 3RB.

Accountants who care, for clients who matter

WatkinsonBlack
Accountants who care for Clients who matter



THE NEW MEDIA CENTRE
OLD ROAD, WARRINGTON WA4 1AT
01925 240247
info@247print.net

twentyfour seven
design & print ltd

10,000
A5
FULL COLOUR
£248.00
PAY FOR 1 SIDE
GET THE OTHER
SIDE PRINTED
FREE

500
FULL COLOUR
Digital Business Cards
(Buy 1 set, get 1 set free)
£35.00

100
A3
£38.00
FULL COLOUR
POSTERS

60"X40"
FULL COLOUR POSTERS
ONLY £12.00 EACH

*ALL PRICES ARE SUBJECT TO VAT

CHRISTMAS world

Christmas Extravaganza Evening

Thursday
18th October
6PM - 9PM

FREE ADMISSION ALL WELCOME

Join us for a fantastic festive shopping evening as we launch our stunning Christmas 2012 displays

• mulled wine & mince pies • live music • tasters • children's entertainer • special offers & best buys • festive demonstrations!

The High Legh Miniature Railway will be running and the Topiary Coffee Shop Open throughout the evening

RECEIVE A FREE £5 GIFT VOUCHER*
WHEN YOU SPEND £25 OR MORE ON THE EXTRAVAGANZA EVENING
£5 voucher valid from 1st - 30th November 2012 only

High Legh Garden Centre
High Legh • Knutsford • 01925 756991



Do you want to reduce stubborn fat, cellulite, loose skin and wrinkles?

CHESHIRE Natural Health

Endermologie is a non-invasive, 100% natural and painless solution to these problems

Lipomassage for the body:

- Fights diet resistant fats and cellulite
- Resculpts the figure

Endermolift for the face:

- Smooths wrinkles and fine lines
- Re-awakens a dull complexion
- Improves under eye bags and circles
- Reduces a double chin

Special Offer £100 Discount
on a course of 10 treatments for first 25 bookings

Cheshire Natural Health, Beehive House, Torporley Road, Stretton, Warrington
www.cheshirenaturalhealth.co.uk Tel: 01925 730123

Walton Hall Gardens Photography Competition 2012

For amateur photographers images taken at Walton Hall Gardens.

Categories include primary and secondary school aged photographer, gardens, children's zoo, events, seasons & buildings/heritage.

Closing date for entries is 29 October 2012.

To enter email waltonphoto@warrington.gov.uk or post to Walton Hall Gardens, off Walton Lea Road, Higher Walton, Warrington WA4 6SN

For further information call 01925 601617 (option 2)



Warrington

ABC wood floor studio

- Real Woods
- Cushion Flooring
- Amtico
- Laminates
- Under Floor Heating
- Oak Doors & Much More

Save the VAT 20% OFF with this advert

190 Knutsford Road Grappenhall Warrington WA4 2QU

Professional Wood Floor Craftsmen available and FREE Moisture & Damp Test when fitted by us!

abcflooringsupplies@googlemail.com

01925 604451

www.abcflooringsupplies.co.uk



Want to lose upto 2 dress sizes without dieting or surgery?

Non Surgical Laser Lipo is the answer!

Instant result, non invasive & painless

Sculpt med spa

Book your FREE consultation now! **01925 601761**

Special offer £25 trial session. 165 London Rd, Stockton Heath



Thelwall Upholstery

FOR THE MOST COMPETITIVE RATES IN THE AREA

49 Knutsford Road, Grappenhall WA4 2NR
Call Sean on: 01925 604770 or mobile: 07799 228080
www.upholsterywarrington.co.uk

For all your upholstery needs

SPECIALISTS IN:

- Re-filling Cushions • Re-springing • Full Re-upholster
- Dining Furniture • Headboards

A wide range of sample books to choose from
All at competitive rates

PHONE FOR YOUR FREE ESTIMATES




CHESHIRE GOLD & SILVER EXCHANGE

WE WANT YOUR GOLD & SILVER FOR INSTANT CASH!

Did you know...?
We accept silver jewellery, cutlery, tea sets, spoons, cigarette cases, candlesticks, trophies, trays, medals, coins and pocket watches.

ALL ITEMS OF JEWELLERY ACCEPTED

GOLD & SILVER BULLION DEALER

Open: Tuesday-Saturday: 10am - 5.30pm
1 London Road, Stockton Heath (First floor entrance on Fairfield Road)
07544 486 621

STOCKTON FRYER

Fish & Chips, Chinese Meals, Burgers, Kebabs and more...

NEW Flavours
Now Available
Chargrill Kebabs

We deliver to WA4: Stockton Heath, Stretton, Latchford, Appleton Thorn, Grappenhall, Pewterspear, Walton
Fri & Sat 5pm - 10.30pm and Sun-Thurs 5pm - 10pm

Minimum order of £10 (£1 delivery charge applies)
Over 4 mile radius £2 delivery

Phone orders for Chinese meals welcome
Tel: 01925 264345

111, London Road, Stockton Heath, Warrington, WA4 6LG

Would you like peace of mind on your gas and electricity prices? Join the Club!

Save 25% on your household bills... by shopping! ASK NOW!

Our unique 'Triple Value' guarantee:

1. For your gas, we guarantee our prices will always be cheaper than British Gas, wherever you live in the UK.
2. For your electricity, we guarantee our prices will always be cheaper than the prices charged by the regional electricity supplier for the area where you live.
3. And for your complete peace of mind we guarantee our prices will always remain competitive compared with the cheapest standard tariffs available from the 'Big 6' suppliers.

For full details, contact: **0800 955 5247**

- Single bill for all your utilities
- Award-winning customer service
- Value that's unbeatable
- Easy to switch

UTILITY WAREHOUSE

And with no minimum contract, it's risk-free.





TailorMade for you...

Understand all your options and maintain control of your money.

Life-long Lymm resident Robert Shaw (pictured right) is one of the Directors of The TailorMade Group who specialise in mainstream and alternative investments predominantly within the (SIPP) Self Invested Personal Pension market.

Having spent nearly 20 years working in the financial services industry Robert (and his colleagues) have a clear message to us all. **'Understand all our options for, and maintain control of, our money... after-all when we adopt a pro-active attitude towards anything in life, we are usually satisfied with the results'**

Can 'satisfaction' be a word that describes the way people generally feel about their investment performance and overall experience in the past? Well it's not something TailorMade's Clients were enthralled about, which is why they have turned to the company to assist with their investment **choice** and **transparent** management of their money.

Robert also urges us all to ensure 'we are aware of where our money is invested, the charges applied for management, fund performance in relation to expectations, where the proceeds go in the event of death, and whether we have a satisfactory degree of asset diversification'.

Why? 'Well, for far too long we have generally relied on the fund management industry, and it has only been in the last few years that the public have started to question this in relation to fund performance and charging structures applied to their pensions and investments.' **Have they received value for money?** 'Well not according to the numerous reports by the UK media and industry watchdogs who have highlighted many cases of extremely poor performance coupled with 'hidden' charging structures. The latter has even resulted in pensions minister Steve Webb calling on the industry 'to clean up its act' in relation to actual charges, which could be as high (in certain circumstances) as four times that published. Poor value is also witnessed when we come to take our retirement benefits, especially if we have purchased an annuity in the last few years. Back in the early nineties annuities were providing over £14,000 per annum in return for £100,000 invested, in today's world we are lucky to receive over £5,000 per annum, meaning we have to survive 20 years to receive our initial investment back! Poor value yet again, yet so many fall foul of this trap'.

'What I also struggle to answer, is



why so many trust solely in the stock market to cater for their future livelihoods, having little understanding of the mechanics, nor the foresight to play such volatile performance to their advantage? My only suggestion is that generally we are not aware of our options, as those that do, tend to act, whilst maintaining control of their strategy'.

For a no obligation initial consultation contact us

TailorMade House
Unit 1, Olympic Way
Olympic Park
Warrington, WA2 0YL

Contact Jo or Heather on

**01925
810595**
quoting ref TMSM3

Or e-mail:

info@tailormadegroup.co.uk
www.tailormadegroup.co.uk

Come along to our Open Day on Friday 26th October to find out more about how TailorMade could help you.

Want to save money?

Join the club!
(over 350,000 people already have)

I ♥ the Club

- ✓ Guaranteed savings!
- ✓ Save 25% on your household bills
- ✓ Award-winning customer service
- ✓ Which? Best Buy - Phone and Broadband Bundles Feb 2010
- ✓ UK's cheapest line rental
- ✓ Free Global Calls*
- ✓ 'Triple Value' guarantee on gas and electricity
- ✓ Cheapest online shopping
- ✓ 1000's of High Street retail partners
- ✓ Earn CashBack on shopping and petrol

94% OF CUSTOMERS SAY THEY'D RECOMMEND US TO A FRIEND

For full details contact:
0800 955 5247
New Media Centre, Old Road,
Warrington WA4 1AT

BEST BUY
THE UTILITY WAREHOUSE
DISCOUNT CLUB

*Charges, terms and conditions apply. See www.club.co.uk for full details.

My NAME IS Tom, 

I AM 6 YEARS OLD.

WHEN I GROW UP, I WANT TO BE A FIREMAN.

Could you help Tom's dreams come true?

Fostering isn't just about putting a roof over a child's head. It's about giving them a loving home and a brighter future.

Changing lives in Warrington through **Fostering**

Contact us to see how you could change a life...
01925 444 100
or visit www.warrington.gov.uk/fostering



What's On in the Villages

October 9
STOCKTON HEATH PARISH COUNCIL
Sandy Lane Centre, Stockton Heath. 7.30pm

October 11
LIVE AT ST WILFRID'S
Antony Peebles (piano) plays Brahms, Chopin, Schumann, Scott Joplin and Loewe.
St Wilfrid's Church, Grappenhall. 7.30pm

October 16
APPLETON PARISH COUNCIL
Parish Hall, Dudlow Green Road. 7.30pm

Every Monday
ST MARY MAGDALENE MONDAY CLUB
St Mary Magdalene Church, Appleton 1.30pm

COUNTRY DANCING CLUB
St Thomas' Primary School, Parkgate Road, Stockton Heath.
8-10pm. Details: 01925 262356

BRIDGE CLUB
Grappenhall Village Sports Club
Stockton Lane. 7.30pm. Details 01928 712233

LADIES' FRIENDSHIP CLUB
The Quays Community Centre,
Thelwall New Road, Thelwall.
8pm. Details: 01925 264099

Every second Monday
PARK (APPLETON) WI
Appleton Parish Hall, Dudlow Green Road.
7.30pm

Every third Monday
NATIONAL VEGETABLE SOCIETY
Cheshire District meeting
Grappenhall Ex-Servicemen's Club,
Chester Road, Grappenhall.
8pm. Details: 01925 265773.

Every Tuesday
COFFEE MORNING
St Cross Church, Appleton Thorn. All welcome
10am-12 noon

PHOTOGRAPHIC SOCIETY
Quays Community Centre,
Thelwall New Road, Thelwall. 7.30pm
Contact: 01925 757582.

COFFEE MORNING
Appleton Independent Methodist Church
Appleton Parish Hall, 10am-12 noon

Second and Fourth Tuesday of each month
STOCKTON HEATH & DISTRICT LIONS
Ram's Head, Grappenhall.

Every Wednesday
APPLETON HALL BADMINTON CLUB
Starting October at Hall Drive, Appleton
7.30-10pm.
Details: 01925 262356

Every first Wednesday
Walton WI
St John's Church Community Hall. 7.30pm

First and third Wednesday each month
NATIONAL ASSOCIATION OF WOMEN'S CLUBS
Sandy Lane Centre, Stockton Heath.
8pm. Details: 01925 268311

STOCKTON HEATH PROBUS CLUB
Warrington Sports Club, Walton Lea Road,
Higher Walton.
Details: 01925 268540

Every third Wednesday
HIGHER WALTON WI, St John's Community
Hall, 7.45pm. Details 01925 262001.

Every fourth Wednesday
ALZHEIMER'S SOCIETY
Support Group, Brampton Lodge Day Centre,
Bridge Lane, Appleton. 6.30-8.30pm

Every Thursday
THE SILVER QUAYS Senior Citizen's Club
The Quays Community Centre,
Thelwall New Road, Thelwall.
Details: 01925 753474.

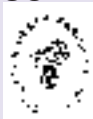
BRIDGE CLUB
Grappenhall Village Sports Club
Stockton Lane. 7.30pm.
Details 01928 712233

Every second Thursday
STRETTON WI
Appleton Parish Hall, Dudlow Green Road.
2.30pm.

Every third Thursday
NORTH EAST CHESHIRE FLOWER CLUB
Appleton Parish Hall, Dudlow Green Road.
2pm
Details: 01925 740419

Every Friday
APPLETOTS TODDLER GROUP
Appleton Parish Hall, Dudlow Green Road.
9.45-11.30am. Details: 01925 268153.

To list your event call **Village Life on**
01925 623632



Legends' Lounge launch

FORMER Manchester United and Northern Ireland star Sammy McIlroy was on hand to officially unveil Warrington Town's newly named Wynne Build Legends' Lounge - sponsored by Grappenhall Heys based businessman Nigel Warburton.

Nigel, who runs Wynne Building Services Ltd with his brother Darren said he was "very proud" to have become a Vice President and sponsor of the Legends' Lounge at his home town club, which he has followed for many years.

"With the recent results the club have been getting and the drive and determination of the new manager and the board of directors, Warrington Town look like a club on the up and



Sammy McIlroy (left) with Wynne Build's Nigel Warburton.

hopefully one day we can have a football league team in the town.

"As a local lad I am very proud to be associated with Warrington Town Football Club and look forward to working closely with them in the future."

With more than 25 years in the building trade Wynne Build have experience in all aspects of

construction, design and civil engineering, from house extensions, new build, roofing to tarmac drive ways and earth work projects.

For more details visit www.wynnebuild.co.uk

Barn conversion thrown out

PLANNING bosses have thrown out a farmer's application for permission to convert a barn into two three-bedroom homes.

Members of Warrington's planning committee heard there had been 26 planning applications since 1983 at Birch Tree Farm, in Red Lane, Appleton.

In 2010 farmer John Bryan was granted permission to use the building as a "granny flat" on condition it remained ancillary to the existing farm house - but never carried out the scheme.

Planning officers now believed a changed approach to housing land supply made such a condition unnecessary and recommended the scheme be approved.

But, after visiting the site, the committee voted it down.

Appleton Parish Council had lodged strong objections to the plan.

They believed approval could set a precedent for other agricultural buildings in the area.

They argued that the development would be contrary to adopted policy and harmful to the Green Belt.

Comedy drama in a beauty parlour

THE Bridgewater Players are to present Robert Harling's comedy drama "Steel Magnolias" at Thelwall Parish Hall on November 15-17.

Set in a small-town beauty parlour, the story revolves around the lives of the regular customers - a group of women of varying ages.

The cast consists of Anita Rushman, Alison Hornby, Norma Dransfield, Kelly Sergeant, June Brogdale and Helen Chapman.

Director is Ian Hornby.

A nearby resident also objected and questioned whether two residential properties would have been allowed at the time permission was given for the barn in 1984.

Planning officers argued that the

conversion should be allowed because the buildings were no longer needed for agricultural purposes and would not be suitable for other business uses.

Oktoberfest 16

Rotary Club of Warrington
Charity Beer Festival



Thursday 11th
Friday 12th
Saturday 13th
October 2012

Thursday & Friday
17.30 - 23.30
Saturday
12.00 - 16.00 & 19.00 - 23.30

Live Music Every Session
Over 70 Cask Ales
Plus Ciders & Bottled Beers

Parr Hall Warrington WA1 1BL
£5 Entry includes souvenir glass
www.warringtonrotary.org.uk

CLASSIFIEDS

Call 0800 955 5247 to advertise

BATHROOMS

The bathroom Refurbishment Co.
 We can create the Bathroom of your dreams
 One Warrington based Company
 One Job from start to finish
 Unique 3D virtual CAD design system
 Please visit our website
 www.bathroomrefurbishment.co.uk
 Please Ring Wayne
01925 826 828 or 07976 574 828

CARPET CLEANING

SIMPLY THE BEST CARPET CLEAN YOU WILL EVER have. Cleaners UK Ltd. Est 22 yrs. Have your carpets & sofas beautifully deep cleaned leaving them fresh smelling & colour restored. Latest & best methods. Dry/Steam. Professional, reliable & affordable. For more info call Neil Riley on 01925 264989/07831 336060 www.cleaners-uk.net

CARPETS, CURTAINS & INTERIORS

BRIDGE AND WALLACE INTERIORS. Made to measure curtains and blinds. Large selection of fabrics and hardware. Poles, tracks, electric tracks and bay window specialists. All supplied and fitted. Full flooring range also available. A56 Agden Brow, Lymm. Tel 01925 755805
CURTAINS AND VALANCES made to measure to your own choice of fabric. Home visits to advise, measure and estimate. Free fitting. Curtain alterations also undertaken. Tel: Catherine Langley on 01925 604400. www.catherine.makescurtains.co.uk

CAR SALES

PARKVIEW CAR SALES
 We buy and sell **QUALITY CARS**
 Best price paid
 Telephone Peter on
01925 575737 / 07957 545479
 23 Padgate Lane
 Padgate, Warrington
 Cheshire, WA1 3RS

CLEANING SERVICES

arleys angels
 • De-cluttering/re-organising
 • Presenting your home for Sale
 • Moving house assistance
 • Spring/After building work cleans
01925 266834
 ... because you're worth it!

CLIMATE CONTROL

CLIMATE CONTROL BY WARRINGTON based 4 Seasons, for offices, shops, surgeries, schools, homes and conservatories like yours! Installed in a day guaranteed 5 years. Keeping you cool when it's hot and warm when it's not. **www.4sac.co.uk 01925 756620**

DELIVERY SERVICES

FURNITURE FERRY LIGHT REMOVALS. Collections arranged from Ikea, Costco and other stores, garden centres, auctions etc. You choose, you buy, I deliver - SIMPLE. Reliable, inexpensive service. Tel: Matt 07970 178 333 or 01942 732768. **www.furnitureferry.co.uk**

ELECTRICAL CONTRACTORS

EVERGREEN ELECTRICAL CONTRACTING. NICEIC approved contractor. For lights and sockets to rewires, fuse-box upgrades. Qualified electrician. All work is to the latest IEE wiring regulations. No job too small. Most major credit and debit cards accepted. Tel: David on 01925 724219 / 07971 407022.
TRUST PROPERTY ELECTRICAL SERVICES. NICEIC Part P Approved Contractor. All Electrical work undertaken. Inspection & testing & PAT testing. All work certified & guaranteed. Call Tim on 07754409906 or 01925 601055

FIRES & FIRE SURROUNDS

Quality Fireplaces at Affordable Prices
WARRINGTON FIRE SURROUNDS
 Surround & Marble Only £299
Quality Value Service Guaranteed
01925 417731
www.warrington-fires.co.uk
 8 Lovely Lane, Warrington (follow signs for hospital)

FRENCH POLISHER

Rafael Meloni. French Polisher, 25 Years experience Domestic, contract, antiques. Furniture, staircases, doors. Sand and re-finish wooden floors. Call 01925 266943 or mob 07811629738. **www.raffrenchpolisher.co.uk**

GARDENING SERVICES

DUTTONS MOWERWORLD
 Your local garden machinery specialist
 SALES • SERVICE • SPARES • HIRE
 Tel: 01925 740217
 The Smithy, Daresbury, Warrington WA4 4AJ
 www.duttonsmowerworld.co.uk

GARDENING SERVICES

LAWN AND SPORTS GROUND DRAINAGE IN ONE DAY. No digging, no repairs. Providing for the larger grassed areas, picture and formal lawns. Contact Bob 07952 608701. 01925 266852. Vat Reg.
M J NEEDHAM LANDSCAPES Award winning with over 15 years experience. All aspects of landscaping, specialist in bespoke construction. Qualified design service available. Contact 01925 764 397 or 07888 730 383
WOODY'S GARDENING MAINTENANCE. All garden work undertaken. Telephone Trevor Wood, Stockton Heath. 01925 267215 or 07582 516652

GATES

Village Gates
 Manufacturers and installers of quality timber gates
villagegates.co.uk
 For free quotes and advice call
01925 766629
 Office Workshop and Showroom at: 10 Charnock Road, Culcheth WA2 3SH

HYPNOTHERAPY

MICHAEL MAHONEY clinical hypnotherapist for IBS, Stress, Anxiety and many other problems. Medical Research project experience, BUPA Service Provider. For FREE information sheet please email **TimelineServices@aol.com** or ring 01925 658322 **www.healthyaudio.com**

JEWELLERY

evans & co JEWELLERS & GOLDSMITHS
JEWELLERY WORKSHOP
 FOR
 • High quality repairs, setting, and re-mounting service
 • In-house innovative Design
 • Loose certificated diamonds and gemstones
 • Stockists of contemporary, high quality British, Swiss and German jewellery and watches.
 Evans & Co, 39 London Road, Stockton Heath WA4 6SG
 Tel: 01925 269 292

LOGS

LOGS, SMOKELESS FUELS, KINDLING and CHARCOAL. Stock up your log stores now, ready for winter. Summer discounts. Buy on line, delivery or self collect. For more information **www.grangefarmlogs.co.uk 01925 290062 07918 710189**

PAYROLL

WHY TRY TO BE A PAYE EXPERT? Watkinson Black can provide a cost effective payroll service, releasing you to concentrate on your business. For further details please phone: 01925 413210 or e-mail: **info@warringtonaccountants.co.uk**

PEST CONTROL

ATLAS ENVIRONMENTAL SOLUTIONS
 All pests eradicated
WASP TREATMENT ONLY £35
 Beware of companies offering a 'cheap' service, once on site their attitude and price usually change!
 Our prices are fixed. Only safe, legal & trusted products used. Guaranteed results, fully insured.
 Your friendly, local independent.
07999 487 925 / 01925 445 222
www.atlas4u.co.uk

PRINTING & EMBROIDERY

STANNO TOMBO, GAMEGEAR, SPORTSWEAR. Embroidery & Printing. No Minimum Quantity. Unsworths Emporium, 31 Irwell Road, off Gainsborough Rd. Tel: 01925 638719.

PRINTER CONSUMABLES

WHEN IT RUNS OUT
POP IN AND SEE HOW MUCH MONEY YOU COULD SAVE TODAY!
 5 London Road, Stockton Heath, Warrington, WA4 6SS
01925 600633 Cartridge World
www.stocktonheath.cartridgeworld.co.uk

SITUATIONS VACANT

SALES PERSON
 Village Life and its sister publications are looking for a self motivated person with good people skills who can work on their own and as part of a team.
 The successful applicant would be able to work from home but would also be expected to spend a certain amount of time in the office
 Hours are by agreement. The package offers expenses and uncapped commission
If you feel you have the necessary qualities please email your CV to info@warrington-worldwide.co.uk

TUITION

DYSLEXIA, DYSCALCULIA OR DYSPRAXIA Impeding literacy or numeracy? Specialist tuition for children aged 6 to 14+ from highly regarded, qualified and experienced professional. Contact Jenny Stanley B.Ed, Dip.SEN, Ad.Dip.SpLD, Dip.Mus. Tel 01925 754594 or 07511 933026.

TYRES

EVERGREEN Centre of Excellence
Express Mobile Tyres
01925 728811
www.express tyres.co.uk
 The tyre service that comes to you at home or your place of work
 Branded & Budget Tyres
 Cars, Vans, 4x4's, Light Commercial & Performance
No Call Out Charge!
BRIDGESTONE MICHELIN
GOOD YEAR Continental

WINDOWS & GLAZING

NEIL COPELAND WINDOWS & Conservatories Ltd. Specialist in uPVC double glazing windows, doors, porches, conservatories, also fascias and guttering. FENSA registered. All work guaranteed. Tel: 01925 756138 / 07961 361550.
SP GLAZING for all your glazing requirements, double glazed units including failed and misted units, broke windows, mirror fixing. Kite marked to B/S. Time served glazier with over 30 years experience. For a friendly no obligation quote tel Sam Pendlebury on 01942 671859. Mob 07919 660296.



The Dress Studio

Dresses for all budgets & occasions!

Over 600 dresses in stock!

Dress specialist for all occasions:

- Proms • Parties • Birthdays • Engagements • Pageants • Weddings
- Cruises • Races • Nights out & More!

Autumn/Winter Collections - NOW IN STORE!



HUGE selection of party, daywear & formal dresses!

Stockists of many designer brands including:

- Forever Unique • Rare • Lipsy • Reverse • Aftershock • Jolie Moi
- McBerry • Little Mistress • Mac Duggal • Impression • Traffic People

New Shoe Department - stockists of Chinese Laundry!

Opening Hours



Tues: 10am-5pm
 Wed: 10am-5pm
 Thurs: 10am-7pm
 Fri: 10am - 5pm
 Sat: 10am - 5pm

Find us on Facebook
www.facebook.com/thedressstudio

Dresses start from
just £15!



Tel: 01925 766258

Email: info@dress-studio.co.uk

Shop online at www.dress-studio.co.uk

The Dress Studio (located next to Black Sheep Wools) - FREE PARKING!
The Warehouse Studios, Glaziers Lane, Culcheth, Warrington, WA3 4AQ