

# VILLAGE

Cheshire's Community Magazine

Issue 134 May 2012 FREE

## life

need family  
law advice?

call your local  
legal experts

free legal clinic  
mondays 5pm-7pm

 fdr  
fordham  
dwyer  
magnay  
&  
associates

01925 604713  
[www.fdrlaw.co.uk](http://www.fdrlaw.co.uk)



## New arrivals!

Page 6

### CORKS OUT

Award Winning Wine  
& Spirit Specialists

New Wine Room

Two New  
Wine Jukeboxes

Garden Now Open  
read Ruth's wine column

See page 14

[www.corksout.com](http://www.corksout.com)



**Cheshire Natural Health**

Reflexology - Acupuncture - Herbal Medicine  
 Bowen Technique - Hypnotherapy  
 Physiotherapy - Osteopathy - Homeopathy  
 Colonic Hydrotherapy - Counselling  
 Private GP - Stop Smoking - Weight Loss  
 Chiroprody - MLD - Massage

Gift Vouchers available, ideal for a Christmas Gift!

Please call to find out more  
 Tel: **01925 730123**

[www.cheshirenaturalhealth.co.uk](http://www.cheshirenaturalhealth.co.uk)  
 Cheshire Natural Health, Beehive House, Tarporley Road, Stratton, Warrington

**We Clean Ovens** ...so you don't have to!

Call us today to leave your cooking appliances sparkling, using our eco friendly products.

**oven**  
 oven valeting service  
 Local | National | Affordable

Our oven cleaning experts will leave you free to enjoy your valuable leisure time.

Call for LOCAL service  
**01925 453377** [oven.co.uk](http://oven.co.uk)

**Whites Sports**  
**Warrington Market**  
 1901 - 2001 - 100 YEARS OF EXCELLENCE

Specialists in:  
 Darts, Bowls, Snooker, Air Guns,  
 Walking Sticks, Warrington Town  
 Merchandise, Rugby, Cricket, Football

**GIFT VOUCHERS AVAILABLE**

Telephone/Fax:  
**01925 631531**

**P.E.T.S. ANIMAL SPA**  
**Pet Grooming Specialists**  
**20 years experience**  
 Grooming from £10  
 Treatments from £5  
 we use products with natural ingredients  
 Blueberry Facial for Tear Stains  
 Avocado Paw Treatment for Cracked Pads

**07792 756 545 or 01925 750418**  
[www.petanimalhotel.co.uk](http://www.petanimalhotel.co.uk)



**Thelwall Upholstery**

**FOR THE MOST COMPETITIVE RATES IN THE AREA**

49 Knutsford Road, Grappenhall WA4 2NR  
 Call Sean on: **01925 604770** or mobile: **07799 228080**  
[www.upholsterywarrington.co.uk](http://www.upholsterywarrington.co.uk)

For all your upholstery needs

SPECIALISTS IN:  
 • Re-filling Cushions • Re-springing • Full Re-upholster  
 • Dining Furniture • Headboards

A wide range of sample books to choose from  
 All at competitive rates

PHONE FOR YOUR FREE ESTIMATES



**The co-operative funeralcare**

Our caring staff are here to listen and advise you,  
 24 hours a day, 7 days a week.

- Pre-Paid Funeral Plans for complete peace of mind.
- Relieve the emotional and financial burden on family and friends.

**Stockton Heath** 63 London Road  
**01925 262 000**

**Warrington** Bewsey Road  
**01925 445 555**



**Walton Lea Project**  
**Farm Shop & Garden**

**Grand Opening Celebration - Saturday 28th April**  
**Open Summer Weekends between 10am and 4pm**

Why not visit, stroll around our beautiful walled garden - inspiration for your own plot, plus plants at sensible prices.

 Find us on Facebook

Also see what's in season and purchase fresh from the Farm Shop, our own and a range of locally sourced produce. Refreshments available

For further info call **01925 860143** | [www.waltonlea.org.uk](http://www.waltonlea.org.uk)  
**Walton Lea Project, Off Chester Road, Higher Walton. WA4 6TB**

**Editor**  
Gary Skentelbery

**Production**  
Paul Walker

**Account Executives**  
James Balme  
Nick White  
Tony Record

**Advertising**  
Freephone  
0800 955 5247

**Editorial**  
01925 623632

**Email**  
info@warrington-  
worldwide.co.uk

**Websites**  
www.culchethlife.com  
www.frodshamlife.co.uk  
www.lymmlife.co.uk  
www.village-life.co.uk  
www.warrington.tv  
www.warrington-  
worldwide.co.uk

**Address**  
New Media Centre  
Old Road, Warrington  
Cheshire WA4 1AT

**Distribution**  
Village Life is distributed  
freely to selected homes  
throughout the area as  
well as being available to  
pick up from various  
outlets, some of which  
are listed below.

**Appleton:**  
Village Hall, Co-op  
**Grappenhall:**  
Co-op, Community Centre  
**High Legh:**  
Garden Centre,  
Village Hall  
**Lower Walton:**  
Spar Shop  
**Mere:**  
Village Store,  
Parish Club  
**Stockton Heath:**  
Co-op, Library  
**Stretton:**  
Beehive Stores  
**Thelwall:**  
Post Office  
**Knutsford:**  
Fryers Garden Centre,  
Library, Heritage Centre,  
Shaw Heath Social Club,  
Mr Chips  
**Lower Peover:**  
Grasslands Nursery  
**Mobberley:**  
Rajar Building

*Village Life is published  
monthly by Orbit News Ltd.*

*The contents of this  
magazine are fully protected  
by copyright and may not be  
reprinted or reproduced  
without prior permission of  
the publishers.*

*The publishers are not liable  
for any statement made or  
opinion expressed by third  
parties in this publication.*

*Printed by TwentyFourSeven*

# Opinion

**AS June 2, the first day of the special Diamond Jubilee weekend, draws nearer, the number and variety of special events planned to mark the occasion, continues to grow.**

We expected larger towns and cities to put on something of a show, even in these harsh times, but if Cheshire is anything to go by, the smaller towns and villages will also be playing their part.

Small budgets, or even no budgets at all, are not preventing people from joining in the fun. Many events are being planned by town and parish councils, but others by community groups, clubs and even individuals.

We have lost count of the number of beacons to be lit at vantage points around the county. Originally, we understand, the idea was that there should be 2,012, but the last time we checked the number registered was more than 3,000.

There will be cynics among us who say that all this proves is that people like to have a good time. But others argue that it is an indication of the affection which most people feel towards The Queen.

Whichever, there is little doubt that the June 2-5 weekend will provide an opportunity for the whole country to forget the doom and gloom of the economy for a little while.

**IN various places, the argument over Academy Schools rumbles on. Some schools have decided to apply to become one, others have not. Some want to, but can't. Some education authorities have declared themselves steadfastly opposed to them.**

At Knutsford, the debate was effectively ended on April 1 when the former Knutsford High School became Knutsford Academy.

But as one debate ended, another started, with the fledgling Academy's decision to become the first "professional school" and, possibly, a national model for other schools to follow.

The days when there were only three professions - the church, the law and medicine - have, of course, long gone, but nevertheless we confess to being a little puzzled by this new kind of "professional school".

In the past, the term has been used to describe institutions educating students for specific occupations. There are schools of law, dentistry, architecture, journalism, etc, etc, all over the country.

Knutsford Academy says its "professional school" curriculum will, in addition to continuing to focus on excellent examination results in academic disciplines, also develop the knowledge, skills and attitudes young people need to gain jobs and success in their chosen careers.

It's a very laudable aim, which we would wish every success. But we do wonder in what way it differs from vocational courses already available at schools across the country.

## Festival attracts high profile sponsor



ORGANISERS of the popular Stockton Heath Festival are delighted to have attracted a high-profile sponsor for their annual Art Exhibition.

Capital and Provincial Ltd, who own the Victoria Building in Stockton Heath, have agreed to be sponsor. They have also offered cash prizes of £300 for first and £200 for second place winners.

Michael Saunders, director of Capital and Provincial, said: "We are delighted to support the community and be involved with the festival and local artists in this excellent exhibition.

"This year will be the 10th anniversary of the redeveloped Victoria Building. We are proud of our catalytic role in the regeneration of the village which has now been recognised by the Purple Flag award."

The exhibition will run from July 12 to 14 in Grappenhall Independent Methodist Church, Knutsford Road. There will

be opportunity to buy some high quality original work and support local amateur artists.

Organiser Helen Dutton said: "The exhibition is open to all local amateur artists working in all types of media except photography.

"We are inviting all the town's art groups and local individuals to submit works to us. Last year we had over 120 exhibits and all prizes awarded are judged independently or by public vote."

Further details about the exhibition and submission of work are available from Helen at helenjayne.dutton@virginmedia.com or telephone 01925 601904.

■ Helen with Tudor Pole (Festival Founder and Co-ordinating Director) and Carole Galsworthy at the opening of the 2011 exhibition.





## Caketastic fundraiser

MORE than £800 was raised by members of The Clandestine Cake Club (CCC) of Warrington for Marie Curie Cancer Care Tea Party campaign held at Grappenhall Cricket Club.

Marie Curie is the only charity that The Clandestine Cake Club (CCC) supports and when local organiser Helen Rimmer received a request to arrange a fundraising event she was positive the bakers of Warrington were up for the challenge!

The Cricket Club kindly donated the venue, the members of The CCC offered to bake, donate raffle prizes and help out on the day and Violets Vintage Teas donated all the vintage china and

decorated the room for the occasion with spring cloths, bunting, gorgeous china and pretty tea cups filled with spring plants.

Ruth Roberts from Grappenhall won the name the bear, Teddy Edward and the raffle was very well supported with prizes from the group and the Marie Curie Warrington South team. The first prize was a beautiful cake made by Julie Carney from The CCC.

Helen said: "Thank you to all who attended and your generosity."

For more information on joining The Clandestine Cake Club see the website [www.clandestinecakeclub.co.uk](http://www.clandestinecakeclub.co.uk) for the next meeting, can't tell you when or where.....join to find out!



## Read-2-Me service in the home

PEOPLE who cannot get to a library or find it difficult to read a book because of ill health or disability can join Warrington Library's Read-2-Me service.

The service is offered on a long or short-term basis by the library, using volunteer readers. Friendly volunteers who love reading themselves will choose books, stories or poems matched to the clients tastes and needs. They visit on a regular basis and read to the client for an hour or so.

The client can either read along - aloud or silently - or just sit back, relax and listen. And of course there is always time to just enjoy the company.

The Read-2-Me service has evolved from the similar Read to Relax sessions held in group settings in Warrington libraries.

Both services provide opportunities for literary discussion and friendly chat.





# Sailing Holidays

The choices are a Flotilla holiday or a Stay and Sail holiday, we can give you advice and a quote on either.

Stay and Sail holidays have a variety of sailing courses to suit all ages and abilities. A fantastic holiday for a group of friends or families/couples. First week will be spent teaching you to sail on the training yachts and the second week spent leisurely sailing with a group of flotillas (yachts) calling in at harbours, BBQ's on the beaches, take the opportunity of swimming and snorkeling. If you only have a week to spare you can take a one week learn to sail holiday, where you will be given 3 days training and the other 4 days sailing on the flotillas. With the flotillas you will have a lead boat and

the crew are always there for assistance, where you will be safe in the knowledge you are not on your own! On a daily basis you will be given a chat about the day's routing, weather and any hazards to avoid. The afternoons are for your leisure ie sunbathing, swimming etc and then you will all meet up in a local destination where there will be a choice of restaurants and bars for you. For families, they will be provided with junior harnesses, life jackets and safety netting where necessary, so making it a safe and enjoyable holiday for all ages.

If you are an experienced sailor and

want to be independent, this is also an option but you will still have the security of their local base and lead crews only a phone call away.

In Greece you would have the choice of Ionian Islands ie Nidri, Sivota or Mourtos, Northern Aegean ie Halkidiki, Lycian Coast, Turkey.

The holiday will have flights, transfers and all accommodations included and the knowledge your money would be ATOL protected! Which in this current climate is extremely important.

Call or pop in and talk to one of our experienced travel staff who will prepare a quote for you. 01925 269400 or email enquiries@island-villas.co.uk



■ Linda Crowder – Stockton Heath Travel

*Keep the village alive  
support your local  
traders!*

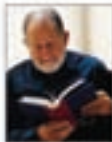


## Read to Me Service

*Bringing the Library to you!*

Do you have difficulty reading because of ill health or a disability, and find it hard to get into your local library?

Then join our Read to Me Service.



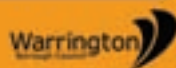
A friendly volunteer will visit you on a regular basis and read to you in your own home for an hour or so.

It is your choice whether you want to read along or sit back, relax and listen.

To be matched with a volunteer, please call:

**Matthew Entwistle on 01925 442890**  
or email [mentwistle@warrington.gov.uk](mailto:mentwistle@warrington.gov.uk)

or ask in your local library.



## We've been making BIG changes at High Legh Garden Centre



Visit our fantastic new Topiary Coffee Shop and Restaurant

Shop in comfort in our newly extended garden centre shop

Pick perfect plants in our improved outdoor plant area

Bigger and better Craft and Clothing Shops

High Legh Garden Centre  
High Legh, Knutsford



Tel: 01925 756991 [www.strikes.co.uk](http://www.strikes.co.uk)



# New arrivals down on the farm!

IT'S that time of year when there plenty of cute and cuddly newcomers arrived at Tatton Park's Home Farm.

First it was lambing time, with 24 farm ewes giving birth to dozens of woolly arrivals, some singly, some in pairs and some in triplicate.

Then Lou Lou, the farm's Jersey cow, decided to get in on the act and gave birth to a delightful little calf, named Jimmy.

In fact, much to the delight of farm staff, Jimmy arrived a week early.

Visitors were able to meet Jimmy and the new spring lambs, listen to educational talks and take part in creative fun activities. Some were lucky enough to see lambs being born.

Home Farm's sheep are mainly Suffolk cross but there are also three rare breed Leicester longwool ewes which are considered "vulnerable" on the Rare Breeds Survival Trust's watch-list.

And in addition to Jersey, the farm is also home to three other native dairy breeds - Ayrshire, Guernsey and Dairy Shorthorn.

Farm manager Jayne Chapman said: "Visitors always flock to see our new arrivals. We also have lots of baby chicks and ducklings so there's plenty of 'aahh' factor!"

■ Farm assistant Lisa Kennedy with one of the new arrivals and Jersey calf Jimmy.



■ Picture: Evan Powell

## Festival dispels funding 'myths'

ORGANISERS of the popular Stockton Heath Festival have spoken out to dispel "myths and misconceptions" about how the festival is funded.

The four-day event costs almost £40,000 to stage, even though it is organised and manned entirely by unpaid volunteers.

But the money comes almost entirely from sponsors, fund-raising events and ticket sales.

Festival secretary Deborah Cook said: "Many people are under the impression that the festival is put on by the council at tax payers' expense.

"This is certainly NOT the case. The festival is a registered charity with no political affiliations and each year needs to raise money to cover its running costs.

"Last year only 13 per cent of our funding came from Stockton Heath and Appleton Parish Councils along with a Warrington Borough Council Stronger Together grant. The rest was raised by sponsorship from local businesses, our lottery, fund-raising events and ticket sales.

"We also greatly appreciate the continuing support we receive from local residents without which it would not be such a success."

Festival organisers say they publicly acknowledge the sponsors who support the festival, without who the festival could not exist.

Stockton Heath Festival this year runs from Thursday July 12 to Sunday July 15.

Organisers are always pleased to hear from anyone who would like to sponsor events or become a volunteer. For further information see the website [www.stocktonheathfestival.co.uk](http://www.stocktonheathfestival.co.uk)



# more than just a smile!

## fixed permanent teeth

## in just one day!



It is now possible using modern implant techniques to achieve natural looking **permanent teeth in just one day**, allowing you to eat what you want, when you want and giving you a beautiful, confident smile.

[www.samedaysmiles.co.uk](http://www.samedaysmiles.co.uk)

**Unable to eat what you want?**

**Do you lack confidence?**

**Don't want to wear dentures?**

from as little as  
**£199**  
per month\*

Local  
Clinic in  
**Lymm**



Before



After



**“** My confidence was at an all-time low, but now, thanks to same day smiles™ I can smile at the whole world knowing that I have beautiful teeth. **”**

Carol Hardy



Call one of our patient co-ordinators and book your **FREE** consultation on:



**0845 004 5361**

## what a difference a day makes™

\*Rates correct at the time of going to press. 7.9% APR fixed for a 5 year term. An application is required and terms and conditions apply. Typical example for one fixed arch is approx. £15,950, requiring a £6049.84 deposit, followed by 60 monthly repayments of £199. Total amount borrowed £9,900.17. Total amount repayable on finance £11,940.07.  
\*\* Finance available for up to 5 years, subject to terms and conditions. Full details available on request.



# Volunteer library celebrates first anniversary

**A VOLUNTEER library, born out of the demise of the former mobile library service, has celebrated its first anniversary.**

Mayor of Warrington Cllr Mike Biggin dropped in at a special party to celebrate the occasion at Appleton Parish Hall, in Dudlow Green Road.

He met volunteers from two WIs and a local church who run the "book exchange" on Mondays and Tuesday.

Local residents have donated hundreds of books for the service and the borough council also gave the library a starter pack.

Tea, coffee and home-made cakes were served at the "birthday party."

The book exchange is open from 2-4pm on Mondays and from 10am to 12 noon on Tuesdays, when coffee is also served.



■ Looking at library books, from the left, are chairman of Appleton Parish Council June Hancock, volunteer Deirdre Houghton, Mayor Mike Biggin, volunteer Judy Bailie, and organiser Cllr Sharon Harris.

## Red squirrel baby boom

VISITORS to Walton Hall Gardens have three special new arrivals to meet.

Three cute red squirrel kittens have been born at the children's zoo, taking the total numbers of kittens born in the gardens to an impressive 30.

Rangers say that red squirrels were once a common sight all over the UK, until the 1950's when the first grey squirrels were brought over from

America.

Since then grey squirrels have virtually wiped out the red squirrels in most of England and Wales. A breeding programme aims to release captive bred red squirrels into managed nature reserves, and to set up many small colonies of captive squirrels in zoos around the country.

Red squirrels came to Walton Gardens Children's Zoo in 2006 and the

rangers work with the Welsh Mountain Zoo, who hold the red squirrel studbook for the UK.

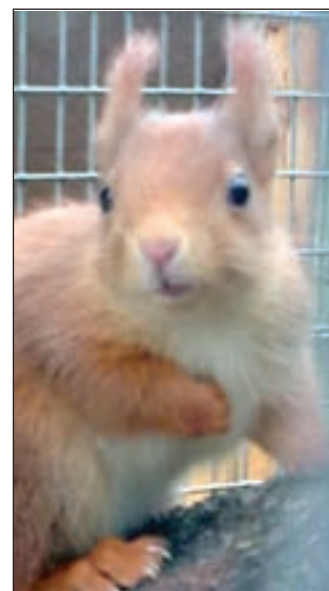
The breeding programme at the zoo was funded by WREN, the waste recycling group.

Zoo ranger Peter Cookson-Dean says: "It's lovely to have baby red squirrels at the zoo again, as we had to wait for the females to be old enough to breed. We hope that this

will be the first of many litters."

Anyone who would like more information about the squirrels, including the zoo's adoption programme, should contact the rangers on 01925 601617 (extension 2) or alternatively download an application form from the Facebook page.

The adoption scheme is run by the Friends of Walton Estate.



## Parks to be renamed

EUCLID Park, Grappenhall and Barley Road Park, Thelwall, are to be re-named to commemorate the Queen's Diamond Jubilee.

Grappenhall and Thelwall Parish Council has decided the two parks should become Diamond Park and Jubilee Park, respectively. Commemorative plaques are to be purchased for each park.

A sub-committee of the council has been authorised to spend up to £2,500 on events relating to the Jubilee.

Expenditure will include embossed bookmarks for local schoolchildren, bunting for the two village centres and production of a Jubilee booklet, to be compiled by clerk Janet Richards.



# Tailormade



# Tailormade



# Tailormade



# Tailormade

# Managing your business resources

**In the current economic climate many of my clients are talking to me about restructuring especially if they rely on the public sector for their income.**

It's interesting to note that they often start the conversation with the phrase "I need to make some people redundant". The truth is in 50% of the cases this is not necessary and costly for the company. If you make somebody redundant you have to pay statutory redundancy pay and full notice and this can add up to 6 months pay if the person has been with you a long time.

The good news is that there are often ways of getting your workforce to reduce their working week or work more flexibly that will give you the required cost savings without paying out large sums of money or risking a

time consuming claim at an employment tribunal. It's ironic that businesses are at most risk of an employment tribunal claim at the time they can least afford the time and resources to fight one.

There is one other advantage of this approach. When the economy does start to pick up (and even the gloomiest of experts say that it will eventually pick up) you will have to increase your output. If you already have the staff in place you will be able to do this without the hassle of recruiting new inexperienced staff that may not be suitable. The other thing to remember is that in an

economic upturn you will be in competition with other employers for the best staff and that will drive up wage rates.

If you are currently going through a downturn give us a call and we will happily discuss the options available to you.



**Kieron Hill  
Employment Services**



**Kieron Hill  
Tel: 07879 551256  
Email: kieronh@khes.co.uk**

## Golf club keen to develop junior talent

WALTON Hall Golf Club is keen to develop junior golf in the Warrington area and in conjunction with the Golf Foundation and Cheshire Golf Partnership is now offering Golf Tuition with PGA Professionals throughout the year and during school holidays.

Tuition is provided by Paul Hodgson, a Class AA PGA Professional with over 12 years experience within

the profession.

He has a wealth of coaching expertise which he has gained from working with a number of top class coaches.

This has helped him to develop an expansive teaching knowledge which enables him to deliver simple and effective coaching for all levels of golfer.

Paul's teaching style puts people at ease and makes learning fun whilst

imparting expert knowledge that allows pupils to improve quickly and successfully.

Paul is available for individual lessons, group lessons, video lessons and junior coaching.

Extended and redesigned in 1977 by Dave Thomas & Peter Allis, the championship 6800 yard course at Walton Hall is widely acknowledged as the premier municipal golf course in the North of England. Situated in the

old Walton Hall estate, the course is now a championship standard with 3 par 3's over 200 yards long.

Anyone who is interested in attending, please contact 01925 263061 or via email at [proshop@waltonhallgc.co.uk](mailto:proshop@waltonhallgc.co.uk)

## Stunning New Care Home in Lymm Show Suites Now Open!

### Our range of care services includes:

- 24-hour nursing and residential care
- Dementia care in our 'Memory Lane Community'
- Respite care and short breaks



**Show  
Suites open  
7 days a  
week**

Show suites are now open at Cheshire Grange. This new care home complements our existing home in Lymm: Brookfield Care Home. Both homes can offer complete peace of mind through professional, personalised care – with respect for each person's individuality.

**Why not visit us to discuss any care needs for yourself or a loved one?**

**Cheshire Grange Care Home | Tel: 01925 540 059 | Booths Hill Road, Lymm, Cheshire, WA13 0EG**

**Brookfield Care Home | Tel: 01925 755 363 | 18 Brookfield Road, Lymm, WA13 0PZ**

**BARCHESTER**  
*Celebrating life*  
[www.barchester.com](http://www.barchester.com)



# The electric car for everyday use

**THE Vauxhall Ampera, European Car of the Year 2012, will be the first electric vehicle suitable for everyday use.**

This is GM's bold claim for a car which they say is not a hybrid and offers drivers all the benefits of electric driving without any of the range anxiety normally associated with electric vehicles.

Electricity powers the wheels of the Ampera at all times, with a 16kWh lithium-ion battery pack feeding an advanced 150PS electric drive unit, delivering between 25-50 miles of battery-powered electric drive and zero tailpipe emissions. What sets the car apart from other electric vehicles is its range extender, which boosts

the car's range by up to 310 miles.

A small 1.4-litre petrol-fuelled engine/generator runs at optimum efficiency, generating enough electricity to power the electric motor (but not the wheels) and operates seamlessly as part of the Ampera's powertrain. The results are a total driving range of up to 360 miles - equivalent to 235.4mpg and combined tailpipe emissions of just 27g/km.

The car costs around £1 to fully charge. It's a four seater, has a top speed of 100mph and accelerates from 0-60mph in just 8.7 seconds. Prices start from £29,995, inclusive of the government's plug-in car grant



## WINE COLUMN

by Ruth Yates from



### Organic, Biodynamic & Natural Wine - What's the difference?

Organic wines or, should I say, wines produced from organically grown grapes are becoming increasingly popular as we become more aware of what we drink as well as what we are eating. Although the words 'Organic' and 'Biodynamic' are frequently spoken about, do we actually know what the term means and how does it affect the wines we are drinking? Loosely speaking, organic wines are made from grapes that have been grown without the use of artificial pesticides, fertilisers and insecticides. Practices in the winery also adhere to these principles forbidding, or severely restricting the use of certain processes and additives.

Biodynamic wines take the concept a stage further and borrows heavily from the work of Rudolph Steiner, an Austrian philosopher. His work emphasises holistic and spiritual elements and the idea that plants respond to many forces of nature, not just nutrients in the soil. No, I don't think for one minute that the winemaker is out there in the middle of the night in his underpants ringing little bells, however, things can become a little different in terms of when they pick and ferment their wine and an astronomical calendar is used to help determine planting, cultivation and harvesting times.

Natural wines tend to be made in small quantities by artisan or independent producers from organically or biodynamically grown grapes in low yielding vineyards and then vinified without sugar, artificial yeasts or enzymes, or recourse to acidification or other adjustments. Most are neither filtered nor fined and many

are made with only tiny amounts of added sulphur, some with none at all. 'Nowt taken out and nowt put in', as the saying goes. The motivation is to rediscover the true flavour of wine. This is something exciting as so many cheap wines are now being bulked over and bottled in the UK, that means the wine has to be heavily dosed up with sulphur to keep it alive whilst being transported, ever wondered why you had that really bad head in the morning after just one glass or two...

Over the years natural wines have progressed massively in terms of quality and consistency. It is probably fair to say that early attempts to make wines without sulphur produced variable results. There is still certainly plenty of debate about them and if you don't use certain controls in the winery you will undoubtedly achieve different results.

Corks Out has recently been trying out a number of natural wines to list and the quality in general ranges from excellent to barely drinkable, obviously, we chose the ones we thought were excellent and during the month of May will be getting involved in the Natural Wine Month and listed a number of natural wines. Pop in, try them in our tasting machines and let us know what you think?

*Corks Out — always providing nothing but the best, affordable luxury in wine.*

Provided by:  
**WatkinsonBlack**  
Chartered Accountants



**Chartered  
Accountants**

**Registered  
Auditors**

Contact  
**David Watkinson  
or Margaret Black**  
at:

1st Floor,  
264 Manchester Rd  
Warrington

**Tel:**  
**01925  
413210**

or email:  
info@warrington  
accountants.co.uk  
www.watkinson  
black.co.uk

# Money Column

By Margaret Black

## Claiming Household Business Expenses

**Genuine Job expenses** - To qualify for a tax deduction an expense must, in the words of s.336 of the Income Tax (Employments and Pensions) Act 2003 be incurred "wholly, exclusively and necessarily in the performance of the duties of the employment".

The "in the performance" condition is a tough one to meet, however, the taxman's practice is based on previous case law. The Taxman allows deductions for home running expenses, e.g. lighting and heating, where these are attributable to business use. These can only ever put you in a position of doing your job, yet they are tax deductible.

However, there is a tribunal case which has recently been published where it worked in the taxman's favour and not in the tax payers.

On the face of it the taxpayer's case seemed reasonable, but he failed due to one of the Taxman's favourite tax traps.

The taxpayer had been an employee of two telecommunication businesses,

and was also a director of his own company. While his home was in Wiltshire, his jobs required him to work in London much of the time. It seemed a logical step to have accommodation in London to work from rather than having to spend out on hotels while he was there. As the taxpayer already owned a share of a London property he used this as his work base. In doing so he incurred telephone expenses, mobile and landline as well as other IT equipment and running costs of the property.

The tribunal decided that the costs incurred in running a property etc. were necessary for the tax payers job but they weren't actually part of it. In other words, they did not meet the S336 condition which says an expense must be incurred "in the performance of the duties of the employment". The judges said that the purchases the tax payer made merely put him in a position to do his job, and weren't part of it.

The tax payers case would have been



David Watkinson and Margaret Black

strengthened and might have succeeded if he could have shown that his employers made it a requirement for him to work at home and expected him to meet the expense of this out of his salary.

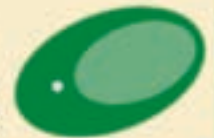
It would always be best practice to include a company policy which forms part of directors' and employees' employment contracts that acknowledges the need for them to work from home and to pay for the cost of this themselves.

The Money Column provided by **WatkinsonBlack** Chartered Accountants

1st Floor, 264 Manchester Road, Warrington, WA1 3RB

Accountants who care, for clients who matter.

**WatkinsonBlack**  
Accountants who care for Clients who matter



WARRINGTON **MB** CENTRE

**Independent Mercedes  
& Volkswagen/Audi Group  
Specialists**



We service Mercedes, VW, Audi, Skoda & SEAT. All work is carried out by ex Mercedes & VW main dealer technicians with a combined experience of over 60 years and at a fraction of the main dealer cost

All repairs carried out: Exhausts, Tyres, Clutches, Diagnostics, VAG-COM and Star Diagnostics available on-site

Have your vehicle serviced to main dealer standards:  
from £150+vat for Inspection/B Service\*  
from £100+vat for A/Oil Service\*

\* using semi synthetic oil



**SERVICE + MOT FROM £130+VAT**



01925 818180 or 07918 138231

Unit 19, Tatton Court, Woolston, Warrington WA1 4RR

**£10 OFF ANY SERVICE OR REPAIR - WITH THIS VOUCHER**

Not in conjunction with any other offer

**ATLAS INTERIORS**  
Affordable Living

**Designer Curtains & Wallpapers**

Call into browse around our large showroom  
Compare our favourable prices to the high street  
but with that extra special service

- Curtains
- Blinds
- Poles
- Tracks
- Wallpapers
- Carpets
- Upholstery
- Cushions
- Throws
- Lighting
- Accessories



We guarantee to beat any genuine like for like quote  
on made to measure curtains and blinds

Harlequin Premier Curtains Made to Measure within 2 weeks

**Free home visits • Full measuring and fitting service**

**Up to 20% Off Selected Ranges**

**Tel: 01925 767739**

435 Warrington Road, Culcheth, Warrington WA3 5SJ

www.atlasinteriors.co.uk






# DUTTONS

## MOWERWORLD

**Your Local Garden Machinery Specialist**

**SALES • SERVICE • SPARES • HIRE**

**Opening Times:** Mon-Fri 8.30am-5pm Saturday 8.30am-1pm

**Tel: 01925 740217**

The Smithy, Chester Road, Daresbury, Warrington WA4 4AJ  
[www.duttonsmowerworld.co.uk](http://www.duttonsmowerworld.co.uk)

## Warrington Fire Surrounds

*Fires, Fireplaces, Marble*

**Quality Fireplaces at Affordable Prices**

A Full Range of Discounted Fires & Fireplaces  
 Living Flame Gas Fires & Electric Fires

**[www.warrington-fires.co.uk](http://www.warrington-fires.co.uk)**

Marble Fireplaces • Made to Order  
 Choice of colours • Fitting Service

**Quality, Value, Service Guaranteed**

**Tel: 01925 417731**  
 8 Lovely Lane, Warrington Cheshire, WA5 1NF

**Supplying Fires to Stockton Heath for 12 Years**




## ABC wood floor studio

- Real Woods
- Cushion Flooring
- Amtico
- Laminates
- Under Floor Heating
- Oak Doors & Much More

**Save the VAT 20% OFF with this advert**

190 Knutsford Road  
 Grappenhall  
 Warrington  
 WA4 2QU

Professional Wood Floor Craftsmen available and FREE Moisture & Damp Test when fitted by us!

**01925 604451**

[www.abcflooringsupplies.co.uk](http://www.abcflooringsupplies.co.uk)




## Walton Lea Project

### Farm Shop & Garden



**Stockton Heath Farmers' Market - Last Sunday of each month at the front of the Mulberry Tree Pub | 10am - 2pm**

**For further info call 01925 860143 | [www.waltonlea.org.uk](http://www.waltonlea.org.uk)**

## Springbrook Landscapes & Nursery

- Trees & Shrubs
- Bedding Plants
- Basket Refills
- Herbaceous Plants
- Seeds & Compost
- Mower Repairs
- Heathers & Conifers
- Design & Landscaping



Rear of the Jahan Indian Restaurant  
 Chester Road, Walton, Warrington

**01925 267085**



## Boutique HOCO

We are pleased to announce the addition of **THOMAS SABO** to our Warrington store

**Tel: 01925 639354**  
[www.boutiquehoco.co.uk](http://www.boutiquehoco.co.uk)  
 17 Old Market Place  
 Golden Square Shopping Centre  
 Warrington WA1 1QB

## STOCKTON FRYER

**NEW Flavours**  
 Now Available  
 Chargrill Kebabs

Fish & Chips, Chinese Meals, Burgers, Kebabs and more...

**We're Now Offering Home Deliveries**  
 Please call us for details  
 Open Mon-Sat / lunch and evenings  
 also Now Open Sunday 5pm - 10pm  
 Phone orders for Chinese meals welcome

**Tel: 01925 264345**  
 111, London Road, Stockton Heath, Warrington, WA4 6LG

## minikids

**PRAM SHOWROOM**  
 PRAMS • ACCESSORIES • LEARNING AIDS

Stockists of:  
**ICANDY • UPPABABY  
 NORTON • QUINNY  
 BABY JOGGER  
 MACLAREN & MORE...**

Mon-Fri 10am - 6pm  
 Sat 10am - 5pm  
 Sun 11am - 5pm  
**LARGE CAR PARK**



**Tel: 01925 418314 • Website: [www.minikids.co.uk](http://www.minikids.co.uk)**  
 Email: [sales@minikids.co.uk](mailto:sales@minikids.co.uk)  
 Unit 3 • Priestley Street (off Froghall Lane) Warrington • WA5 1TF



# Golf club support soccer club

**HIGH** Legh Park, one of Cheshire's premier golfing venues, has just announced sponsorship of Cuddington and Sandiway's under 15s football team.

The team, who are currently sitting in second place in the Mid Cheshire Youth First Division, has been searching for a sponsor to help with the escalating cost of first team kits. High Legh Park Golf Club stepped in to provide the funding for the 16 man squad.

"We are always looking for opportunities to work with other sporting organisations in the area," commented Gavin Beddows at the golf club.

"This team of young lads are doing particularly well in their local division and we are delighted to be able to offer them a small amount of sponsorship to ensure that they look like the professional team that we know them to be."

Iain Pemberton, manager of the under 15s side is pleased that his team now has a kit sponsor. "In the current climate it is difficult to find companies that are willing to sponsor a junior football club. High Legh Park Golf Club have been great in supporting us. We are certain that the new kit will spur the team on to even greater results."



## Sondheim's music gets a boost from the web

THE music of Stephen Sondheim will be showcased by Knutsford Musical Theatre Company in their next production - and given a boost with a new online ticket sales facility.

"A Salute to Sondheim" will be staged at The Grange Theatre, Hartford on May 25-27 and will feature a range of the master's greatest works.

The show has been written by KMTC musical director Alan Dean, who has been a Sondheim fan for years.

He said: "I love Sondheim's work because his lyrics are always so meaningful. They can be brilliantly witty, disturbingly cynical, deeply

moving, whatever the moment's mood requires."

Songs include "Tonight" and "I Feel Pretty" from West Side Story, "Comedy Tonight" from A Funny Thing Happened on the Way to the Forum, "Send in the Clowns" and "Losing my Mind".

It also includes some less well-known and more quirky songs, such as "Anyone can Whistle", "Everybody says Don't".

KMTC is trying a new, convenient way of selling tickets through a link on the company website.

Webmaster Nick Abbott said: "In

today's modern society, people are used to seeing what they want and clicking to buy it straight away. We can now provide that with our new service.

"Tickets can either be posted, printed yourself, or emailed to your phone to present at the door of the theatre."

A box office phone number is still available, and KMTC hope that this wide choice of sales options will help boost ticket sales.

The web address is [www.kmtc.org.uk/tickets.html](http://www.kmtc.org.uk/tickets.html) and the phone contact is 01565 634551.

## Canal tunnel work set to start

WORK is to start around the middle of May on the replacement of four old water mains in a flooded tunnel 60ft beneath the Manchester Ship Canal at Stockton Heath.

The work, originally scheduled to take place at the end of August last year, is expected to last about six weeks.

It will involve closure of Ellesmere Road between the entrance to St Thomas' Church Hall and the London Road swing bridge.

United Utilities will replace four old mains in a tunnel dating from the time the canal was built in the 1890s.

The tunnel is now almost permanently flooded as a result of water seeping through from the canal - and this has led to corrosion of the mains.

In addition to the water mains, the tunnel also carries gas and electricity mains, telecommunications cables and the hydraulics which operate the swing bridge.

The project is part of a wider scheme to improve water supplies to cater for the growth of Warrington in recent years.

Residents, businesses, police and the local authorities are being consulted but while United Utilities say every effort will be made to minimise traffic disruption, some is expected to be inevitable.

## Another award for the village hall

APPLETON Thorn Village Hall has picked up another award from CAMRA - the Campaign for Real Ale - to add to its already impressive collection.

The former village school building, which became the village hall in 1980, has won the CAMRA North Cheshire branch "Club of the year" award.

It's the fifth time the venue has won the award and it has also won the Regional award on four occasions since 2006, as well as winning the North Cheshire Cider and Perry "Pub of the Year" award in 2009 and 2010 and the Regional Cider and Perry "Pub of the Year" award in 2010.

But its main achievements were to be joint winner of the CAMRA National "Club of the Year" in 2008 and to be a finalist in the same competition in 2010.

The hall operates as a pub on Thursday, Friday and Saturday evenings and from 1pm to 10.30pm on Sundays.

But it is also used as a pre-school and by various local groups including a dancing school, Guides, Rainbows, Mums and Tots group and Over 50s.

## Parish records to be restored

OLD minute books detailing the proceedings of Stockton Heath Parish Council are to be restored and archived by the Cheshire County Archivist in Chester.

The records will remain the property

of the parish council and, under the Freedom of Information Act, will still be available to members of the public.

Members of the council agreed to the move after hearing that some pages of past minute books had

deteriorated - particularly for the year 1976.

The County Archivist will do the work at no charge.

Meanwhile, the parish council is to purchase a fireproof cabinet for storage of remaining records.



## What's On in the Villages

**May 8**  
STOCKTON HEATH PARISH COUNCIL  
Sandy Lane Centre, Stockton Heath. 7.30pm

**May 12**  
LIVE AT ST WILFRID'S  
Chetham's School of Music.  
Chamber ensembles and soloists performing with the orchestra from the UK's largest specialist music school.  
St Wilfrid's Church, Grappenhall Village, 7.30pm

**May 15**  
APPLETON PARISH COUNCIL  
Parish Hall, Dudlow Green Road. 7.30pm

**May 25-27**  
KNUTSFORD MUSICAL THEATRE COMPANY  
A Salute to Sondheim  
Grange Theatre, Hartford.

**Every Monday**  
ST MARY MAGDALENE MONDAY CLUB  
St Mary Magdalene Church, Appleton 1.30pm  
**COUNTRY DANCING CLUB**  
St Thomas' Primary School, Parkgate Road, Stockton Heath.  
8-10pm. Details: 01925 262356

**LADIES' FRIENDSHIP CLUB**  
The Quays Community Centre, Thelwall New Road, Thelwall.  
8pm. Details: 01925 264099

**Every second Monday**  
PARK (APPLETON) WI  
Appleton Parish Hall, Dudlow Green Road. 7.30pm

**Second and fourth Monday**  
WARRINGTON ART GROUP  
Bellhouse Community Centre, Bellhouse Lane, Grappenhall.  
7-9pm.

**Every third Monday**  
NATIONAL VEGETABLE SOCIETY  
Cheshire District meeting  
Grappenhall Ex-Servicemen's Club, Chester Road, Grappenhall.  
8pm. Details: 01925 265773.

**Every fourth Monday**  
MARLFIELD WI  
Independent Methodist Chapel, Knutsford Road, Grappenhall. 7.30pm

**Every Tuesday**  
COFFEE MORNING  
St Cross Church, Appleton Thorn. All welcome.  
10am-12 noon

**PHOTOGRAPHIC SOCIETY**  
Quays Community Centre,  
Thelwall New Road, Thelwall. 7.30pm.  
Contact: 01925 757582.

**COFFEE MORNING**  
Appleton Independent Methodist Church  
Appleton Parish Hall, 10am-12 noon

**Second and Fourth Tuesday of each month**  
STOCKTON HEATH & DISTRICT LIONS  
Ram's Head, Grappenhall.

**Every Wednesday**  
APPLETON HALL BADMINTON CLUB  
Starting May at Hall Drive, Appleton. 8-10pm.  
Details: 01925 262356

**Every first Wednesday**  
Walton WI  
St John's Church Community Hall. 7.30pm

**First and third Wednesday each month**  
NATIONAL ASSOCIATION OF WOMEN'S CLUBS  
Sandy Lane Centre, Stockton Heath.  
8pm. Details: 01925 268311

**STOCKTON HEATH PROBUC CLUB**  
Warrington Sports Club, Walton Lea Road, Higher Walton.  
Details: 01925 268540

**Every third Wednesday**  
HIGHER WALTON WI, St John's Community Hall,  
7.45pm. Details 01925 262001.

**Every fourth Wednesday**  
ALZHEIMER'S SOCIETY  
Support Group, Brampton Lodge Day Centre, Bridge Lane, Appleton. 6.30-8.30pm

**Every Thursday**  
THE SILVER QUAYS Senior Citizen's Club  
The Quays Community Centre, Thelwall New Road, Thelwall.  
Details: 01925 753474.

**Every second Thursday**  
STRETTON WI  
Appleton Parish Hall, Dudlow Green Road. 2.30pm.

**Every third Thursday**  
NORTH EAST CHESHIRE FLOWER CLUB  
Appleton Parish Hall, Dudlow Green Road. 2pm  
Details: 01925 740419

**Every Friday**  
APPLETOTS TODDLER GROUP  
Appleton Parish Hall, Dudlow Green Road.  
9.45-11.30am. Details: 01925 268153.

To list your event call **Village Life on**  
**01925 623632**

APPLETON  
PARISH  
COUNCIL



# Comedy that has stood the test of time

**AN opportunity to appreciate Noel Coward at his funniest comes when Stockton Heath Methodist Dramatic Society stage "Blithe Spirit" for three nights from Thursday, May 17.**

Set in the late 1930s, the play has stood the test of time well and is still regarded as one of Coward's best farces.

## Jubilee garden party

A SPECIAL garden party to celebrate the Queen's Diamond Jubilee will be held by St Cross Church, Appleton Thorn and St Matthew's Church, Stretton, on Saturday, June 2 between 2pm and 5pm.

Admission will be free to the celebration on the lawns at the Vicarage in Stretton Road, Stretton.

There will be tea, cakes and sandwiches, an optional fancy dress competition for children, fancy hat parade and children's crafts and games and a themed quiz.

Anyone willing to help organise the day is asked to contact the Vicar, the Rev Elaine Chegwin-Hall on 01925 730276 or by emailing petera.hall@care4free.net

Fussy, cantankerous novelist Charles Condomine, whose first wife Elvira has been dead for seven years, has been reasonably happy with Ruth, his second wife of five years.

However, when Charles invites a local medium - Madame Arcati - into his house one evening, to learn about the occult for his new book, the last thing he or Ruth imagine is that the séance will bring back Elvira.

Things are further complicated by the fact that only Charles can see her, which results in some hilarious exchanges and misunderstandings.

Jealous Elvira becomes determined to get Charles to herself forever and arranges several "accidents". However, her plots to get him to "the other side" do not quite go to plan and Madame Arcati's skills are tested to the limit in an attempt at exorcism.

The curtain rises at 7.30pm each evening and tickets are available in advance on 01925 267201.

## Meet your MP David Mowat

David Mowat, MP for Warrington South, holds regular surgeries throughout the constituency. If you would like to arrange an appointment to discuss an issue of concern to you please e-mail him at [david.mowat.mp@parliament.uk](mailto:david.mowat.mp@parliament.uk) or telephone 01925 231267.



**David Mowat**  
Member of Parliament for Warrington South  
[www.davidmowat.org](http://www.davidmowat.org)

Produced by David Mowat MP, House of Commons, London SW1A 0AA

## Village walk goes on the web

A WEBSITE has been launched giving details of this year's Stretton Walking Day - including a history of previous walks and video footage and photographs.

Planning is already well advanced for the event, which takes place on Saturday, July 21.

The day will start with a service at St Matthew's Church at 11am, when the Rose Queen and her attendants will be formally appointed.

At 12noon the Walk of Witness takes place, led the vicar, the Rev Elaine Chegwin-Hall, accompanied by a brass band.

At 1pm a summer fair opens in the school grounds, with stalls, fairground rides, dance display, barbecue, face painting and DJ. Refreshments will be available at the Church Hall.

The website can be found at [www.strettonwalkingday.co.uk](http://www.strettonwalkingday.co.uk)

## Stockton Heath Lawn Tennis Club

**Welcomes new players of all ages and abilities**

**Season starts 1st April  
Club Open Day  
22nd April**

**Contact membership secretary  
07587 265215  
[samantha839@btinternet.com](mailto:samantha839@btinternet.com)**

THE NEW MEDIA CENTRE  
OLD ROAD, WARRINGTON WA4 1AT  
**01925 240247**  
[info@247print.net](mailto:info@247print.net)

**twentyfour**  
**seven**  
design & print ltd

**10,000**  
**A5**  
FULL COLOUR  
**£248.00**  
PAY FOR 1 SIDE  
GET THE OTHER  
SIDE PRINTED  
**FREE**

**500**  
FULL COLOUR  
Digital Business Cards  
(Shop 1 set, get 1 set free)  
**£35.00**

**100**  
**A3**  
**£38.00**  
FULL COLOUR  
POSTERS

**60"X40"**  
FULL COLOUR POSTERS  
ONLY £12.00 EACH

ALL PRICES ARE SUBJECT TO VAT



## CLASSIFIEDS

Call 0800 955 5247 to advertise

## BATHROOMS

**The bathroom Refurbishment Co.**

We can create the Bathroom of your dreams  
One Warrington based Company  
One Job from start to finish  
Unique 3D virtual CAD design system  
Please visit our website  
[www.bathroomrefurbishment.co.uk](http://www.bathroomrefurbishment.co.uk)  
Please Ring Wayne  
**01925 826 828 or 07976 574 828**

(6\*)

[www.distinctive-bathrooms.co.uk](http://www.distinctive-bathrooms.co.uk)

**THE ULTIMATE NAME IN BATHROOMS**

Forty years and still one of the best at creating beautiful bathrooms

- Bathrooms/En-Suite
- Specialist Wall & Floor Tiling
- UPVC Ceiling & Lighting
- Under/Flooring/Heating

From £1499 Fully Fitted

Info@distinctive-bathrooms.co.uk  
Call 07627 173123 or 01925 767803

(6\*)

## CARPET CLEANING

**SAFE CLEAN: SAFE ORGANIC CLEANING.** Specialists in cleaning all leather and fabric upholstery, rugs, carpets and curtains in situ. Ask about our new organic allergy relief system. Guardsman stain protection plans and carpet repairs. Call **Carey Randall** on 01925 815724

(64/12)

**SIMPLY THE BEST CARPET CLEAN YOU WILL EVER HAVE.** Cleaners UK Ltd. Est 22 yrs. Have your carpets & sofas beautifully deep cleaned leaving them fresh smelling & colour restored. Latest & best methods. Dry/Steam. Professional, reliable & affordable. For more info call Neil Riley on 01925 264989/07831 336060 [www.cleaners-uk.net](http://www.cleaners-uk.net)

(112/12)

## CARPETS, CURTAINS &amp; INTERIORS

**BRIDGE AND WALLACE INTERIORS.** Made to measure curtains and blinds. Large selection of fabrics and hardware. Poles, tracks, electric tracks and bay window specialists. All supplied and fitted. Full flooring range also available. A56 Agden Brow, Lymm. Tel 01925 755805

(110/12)

**CURTAINS AND VALANCES** made to measure to your own choice of fabric. Home visits to advise, measure and estimate. Free fitting. Curtain alterations also undertaken. Tel: **Catherine Langley** on 01925 604400. [www.catherine.makescurtains.co.uk](http://www.catherine.makescurtains.co.uk)

(13/12)

**PAUL BAINS FLOORING SOLUTIONS LTD.** Carpets, wood, laminates, decorative vinyl flooring, free choose at home service. 101 Bucklow Gardens, Lymm WA13 9RN. T: 01925 748549 M: 07973 376224. E: [paulbainsflooring@msn.com](mailto:paulbainsflooring@msn.com) [www.paulbainsflooringsolutions.co.uk](http://www.paulbainsflooringsolutions.co.uk)

(39/12)

## CAR SALES

**PARKVIEW CAR SALES**

We buy and sell  
**QUALITY CARS**  
Best price paid  
Telephone Peter on  
**01925 575737 / 07957 545479**  
23 Padgate Lane  
Padgate, Warrington  
Cheshire, WA1 3RS

6\*

## CLEANING SERVICES

**arleys angels**

- De-cluttering/re-organising
- Presenting your home for Sale
- Moving house assistance
- Spring/After building work cleans

**01925 266834**  
because you're worth it!

## CLIMATE CONTROL

**CLIMATE CONTROL BY WARRINGTON** based 4 Seasons, for offices, shops, surgeries, schools, homes and conservatories like yours! Installed in a day guaranteed 5 years. Keeping you cool when it's hot and warm when it's not. [www.4sac.co.uk](http://www.4sac.co.uk) 01925 756620

(66/12)

## CHILDREN'S THERAPY

**JANE FAY, REGISTERED PTUK PLAY Therapist** for children with behaviour or emotional problems, sleeping problems, anxiety, withdrawn, frequently angry, suffered bereavement/ loss, ADHD, on autistic spectrum. Tel 07703 661126 [www.playtherapy4children.co.uk](http://www.playtherapy4children.co.uk)

(85/12)

## DELIVERY SERVICES

**FURNITURE FERRY LIGHT REMOVALS.** Collections arranged from Ikea, Costco and other stores, garden centres, auctions etc. You choose, you buy, I deliver - SIMPLE. Reliable, inexpensive service. Tel: **Matt 07970 178 333 or 01942 732768.** [www.furnitureferry.co.uk](http://www.furnitureferry.co.uk)

(66/12)

## ELECTRICAL CONTRACTORS

**EVERGREEN ELECTRICAL CONTRACTING.** NICEIC approved contractor. For lights and sockets to rewires, fuse-box upgrades. Qualified electrician. All work is to the latest IEE wiring regulations. No job too small. Most major credit and debit cards accepted. Tel: **David** on 01925 724219 / 07971 407022.

(10/12)

**TRUST PROPERTY ELECTRICAL SERVICES.** NICEIC Part P Approved Contractor. All Electrical work undertaken. Inspection & testing & PAT testing. All work certified & guaranteed. **Call Tim** on 07754409906 or 01925 601055

(69/12)

## FIRES &amp; FIRE SURROUNDS

**Quality Fireplaces at Affordable Prices**

**WARRINGTON FIRE SURROUNDS**

**Surround & Marble Only £299**

**Quality Value Service Guaranteed**  
**01925 417731**  
[www.warrington-fires.co.uk](http://www.warrington-fires.co.uk)  
**8 Lovely Lane, Warrington**  
(follow signs for hospital)

(6\*)

## FLOOR COVERING

**FLOORPLAN** - for all your flooring needs. Carpets, Laminates, Wooden Flooring, Vinyls. 1 Fennel Street, Warrington, WA1 2PA. Contact **Rob.** Tel: 0192 574007 E-mail [floorplan100@btconnect.com](mailto:floorplan100@btconnect.com) [www.floorplanwarrington.co.uk](http://www.floorplanwarrington.co.uk) Large showroom and display - free car parking.

(17/12)

## GARDENING SERVICES

**DUTTONS MOWERWORLD**

Your local garden machinery specialist

SALES • SERVICE • SPARES • HIRE

**Tel: 01925 740217**  
The Smithy, Daresbury, Warrington WA4 4AJ  
[www.duttonsmowerworld.co.uk](http://www.duttonsmowerworld.co.uk)

(15/12)

## GARDENING SERVICES

**LAWN AND SPORTS GROUND DRAINAGE IN ONE DAY.** No digging, no repairs. Providing for the larger grassed areas, picture and formal lawns. Contact **Bob 07952 608701. 01925 266852.** Vat Reg.

(19/12)

**WOODY'S GARDENING MAINTENANCE.** All garden work undertaken. Telephone **Trevor Wood, Stockton Heath. 01925 267215 or 07582 516652**

(10/12)

## GATES

**Village Gates**

Maintenance and installation of quality timber gates

[villagegates.co.uk](http://villagegates.co.uk)

For free quotes and advice call  
**01925 766629**  
Office Workshop and Showroom 221  
10 Charnock Road, Culcheth WA3 3SH

(17/12)

## HYPNOTHERAPY

**MICHAEL MAHONEY** clinical hypnotherapist for IBS, Stress, Anxiety and many other problems. Medical Research project experience, BUPA Service Provider. For **FREE** information sheet please email [TimelineServices@aol.com](mailto:TimelineServices@aol.com) or ring 01925 658322 [www.healthyaudio.com](http://www.healthyaudio.com)

(6\*)

## JEWELLERY

**evans & co**  
JEWELLERS & GOLDSMITHS

**JEWELLERY WORKSHOP**  
FOR

- High quality repairs, setting, and re-mounting service
- In-house innovative Design
- Loose certificated diamonds and gemstones
- Stockists of contemporary, high quality British, Swiss and German jewellery and watches.

Evans & Co.  
39 London Road,  
Stockton Heath WA4 6SG  
Tel: 01925 269 292

(11/12)

## PAINTING &amp; DECORATING

**STRIP 4 U, ALL STAIRCASES, WALLS, CEILINGS,** Artex and woodwork professionally stripped. Quality painting and decorating service for interior/exterior. Fully insured clean and tidy. Call **Carl** for a **FREE ESTIMATE** on 01925 657469 / 07950 385904

(18/12)

## PAYROLL

**WHY TRY TO BE A PAYE EXPERT?** Watkinson Black can provide a cost effective payroll service, releasing you to concentrate on your business. For further details please phone: 01925 413210 or e-mail: [info@warringtonaccountants.co.uk](mailto:info@warringtonaccountants.co.uk)

(6\*)

## PEST CONTROL

**ATLAS PEST CONTROL**  
All pests eradicated  
**WASP TREATMENT ONLY £35**

Beware of companies offering a 'cheap' service, once on site their attitude and price usually change!

Our prices are fixed. Only safe, legal & trusted products used. Guaranteed results, fully insured,

Members of National Pest Technicians Association

Your friendly, local independent.  
**07999 487 925 / 01925 445 222**  
[www.atlas4u.co.uk](http://www.atlas4u.co.uk)

(14/12)

## PRINTER CONSUMABLES

**WHEN IT RUNS OUT**

**POP IN AND SEE HOW MUCH MONEY YOU COULD SAVE TODAY!**

5 London Road, Stockton Heath, Warrington, WA4 6SG  
**01925 600633**  
[www.stocktonheath.cartridgeworld.co.uk](http://www.stocktonheath.cartridgeworld.co.uk) Cartridge World

(10/12)

## TYRES

**Express Mobile Tyres**

**01925 728811**

[www.expresstyres.co.uk](http://www.expresstyres.co.uk)

The tyre service that comes to you at home or your place of work

Branded & Budget Tyres  
Cars, Vans, 4x4's, Light Commercial & Performance

No Call Out Charge!

**BRIDGESTONE MICHELIN**  
**GOODYEAR Continental**

(6\*)

## WINDOWS &amp; GLAZING

**NEIL COPELAND WINDOWS & Conservatories Ltd.** Specialist in uPVC double glazing windows, doors, porches, conservatories, also fascias and guttering. FENSA registered. All work guaranteed. Tel: 01925 756138 / 07961 361550.

(12/12)

**SP GLAZING** for all your glazing requirements, double glazed units including failed and misted units, broke windows, mirror fixing. Kite marked to B/S. Time served glazier with over 30 years experience. For a friendly no obligation quote tel **Sam Pendlebury** on 01942 671859. Mob 07919 660296.

(110/12)

To promote  
your business  
on these  
pages call  
**James Bryan**  
on  
**FREEPHONE**  
**0800**  
**955**  
**5247**





# The Dress Studio



Summer collection  
now available!  
Maxis, floral prints and  
holiday dresses!

Dress specialist for all occasions:

- Proms • Parties • Birthdays • Engagements • Pageants • Weddings
- Cruises • Races • Nights out & More!

The Races, Party & Summer Dresses!



Perfect Prom Dresses - No need to pre-order, all available instore!



Stunning shoes now instore!!

Opening Hours



Tues: 10am-5pm  
Wed: 10am-5pm  
Thurs: 10am-7pm  
Fri: 10am - 5pm  
Sat: 10am - 5pm

# SALE NOW ON

Prices start from just £15!

Find us on Facebook  
[www.facebook.com/thedressstudio](http://www.facebook.com/thedressstudio)



Tel: 01925 766258

Email: [info@dress-studio.co.uk](mailto:info@dress-studio.co.uk)

[www.dress-studio.co.uk](http://www.dress-studio.co.uk)

The Dress Studio (located next to EuroKids Model Agency)  
The Warehouse Studios, Glaziers Lane, Culcheth, Warrington, WA3 4AQ