

# VILLAGE

Cheshire's Community Magazine

Issue 143 February 2013 FREE

*life*

 QualitySolicitors  
Fornham Davies Ridgway

For whatever life brings.

01925 604713

Office in Stockton Heath

[qualitysolicitors.com/fdr](http://qualitysolicitors.com/fdr)

## Globetrotting biker

Page 9



**Warrington jobs fair**

"During this difficult time for the economy, I am acutely aware of the problems faced by many of the people in Warrington who are in low income jobs or who are jobseekers. Since 2009, I have been running a Jobs Club and so far 150 people have been helped back into employment or education."

I will be holding a jobs fair on **Friday 8th February, 2013** at The Halliwell Jones Stadium.

This is a fantastic opportunity for employers to meet talented, local people looking for jobs."

David Mower - MP for Warrington South

[www.warringtonjobsfair.com](http://www.warringtonjobsfair.com)



# Restaurant plan approved

PLANNERS have given the go-ahead for the former Ethel Austin fashion shop in Stockton Heath to be converted into a restaurant.

The proposals were opposed by Stockton Heath Parish Council - but

borough planning bosses approved the scheme after hearing it would create 15-20 jobs.

Planners visited the site before reaching their decision.

The parish council argued that the property was one of the few retail premises remaining in part of London Road.

They believed its loss would damage the village shopping centre's day-time economy.

There were also concerns about noise disturbance and smells affecting adjacent properties and problems caused by vehicles parking in London Road.

But planning officers said the loss of a single retail unit would cause no harm to the vitality of the village centre.

**Whites Sports**  
Warrington Market  
1901 - 2001 - 100 YEARS OF EXCELLENCE

Specialists in:  
Darts, Bowls, Snooker, Air Guns, Walking Sticks, Warrington Town Merchandise, Rugby, Cricket, Football

**GIFT VOUCHERS AVAILABLE**

Telephone/Fax:  
**01925 631531**



**The co-operative funeralcare**

Our caring staff are here to listen and advise you, 24 hours a day, 7 days a week.

- Pre-Paid Funeral Plans for complete peace of mind.
- Relieve the emotional and financial burden on family and friends.

**Stockton Heath** 63 London Road  
**01925 262 000**

**Warrington** Bewsey Road  
**01925 445 555**



**We Clean Ovens ...so you don't have to!**

Call us today to leave your cooking appliances sparkling, using our eco friendly products.

**oveni**  
oven valeting service  
Local | National | Affordable

Our oven cleaning experts will leave you free to enjoy your valuable leisure time.

Call for LOCAL service  
**01925 453377** [oveni.co.uk](http://oveni.co.uk)



*Relax this winter with Barchester*

**Respite Stay Available**

With another cold winter upon us, there's no better time to make sure your loved ones are in the best possible care.

At Barchester keeping our residents happy, warm and actively engaged is paramount. From delicious, hearty meals, to fun activity afternoons, there need never be a dull moment.

Every day is an opportunity to make new friends and enjoy a wide range of entertainment - knowing that fully qualified staff are always close at hand.

- Nursing Care
- Residential Care
- Dementia Care
- Respite Care

Now is the time to start planning for winter  
Please contact us for further information or to arrange a visit  
[www.barchester.com](http://www.barchester.com)

**20 YEARS**  
1993-2013

**BARCHESTER**  
Celebrating life

**Brookfield Care Home**  
18 Brookfield Road, Lymm, Cheshire, WA13 0PZ  
Tel: 01925 755 363

**Cheshire Grange Care Home**  
Booths Hill Road, Lymm, Cheshire, WA13 0EG  
Tel: 01925 750 670

**Editor**

Gary Skentelbery

**Production**

Paul Walker

**Account Executives**

James Balme

Nick White

Tony Record

**Advertising**

Freephone

0800 955 5247

**Editorial**

01925 623632

**Email**

info@warrington-worldwide.co.uk

**Websites**

www.culchethlife.co.uk

www.frodshamlife.co.uk

www.lymmlife.co.uk

www.village-life.co.uk

www.warrington.tv

www.warrington-worldwide.co.uk

**Address**New Media Centre  
Old Road, Warrington  
Cheshire WA4 1AT**Distribution**

Village Life is distributed freely to selected homes throughout the area as well as being available to pick up from various outlets, some of which are listed below.

**Appleton:**

Village Hall, Co-op

**Grappenhall:**

Co-op, Community Centre

**High Legh:**

Garden Centre,

Village Hall

**Knutsford:**

Fryers Garden Centre,

Library, Heritage Centre,

Shaw Heath Social Club,

Mr Chips

**Lower Walton:**

Spar Shop

**Mere:**

Village Store,

Parish Club

**Mobberley:**

Rajar Building

The Victory Hall

**Stockton Heath:**

Co-op, Library

**Stretton:**

Beehive Stores

Stretton Newsagents

**Thelwall:**

Post Office

*Village Life is published monthly by Orbit News Ltd.**The contents of this magazine are fully protected by copyright and may not be reprinted or reproduced without prior permission of the publishers.**The publishers are not liable for any statement made or opinion expressed by third parties in this publication.**Printed by TwentyFourSeven*

# Opinion

**IT is pleasing to be able to report that the village of Stockton Heath has retained its prestigious Purple Flag status for a second year.**

It was the first village in the country to receive the award - normally only awarded to towns and cities - and 12 months on it remains the only village to have received it.

Purple Flag awards are awarded by the Association of Town Centre Management to communities which demonstrate the highest standards relating to the management of the area at night.

Stockton Heath is, of course, unusual in that it is a village with enough restaurants, cafes, bars and pubs to provide a thriving evening economy, and this is obviously one reason for it remaining the only village with a Purple Flag.

But this does not diminish the achievement. A thriving evening economy often goes hand in hand with problems of noise, anti-social behaviour, litter, etc. and, indeed, Stockton Heath did at one time suffer such problems.

The fact that it is now sufficiently free of trouble to merit a Purple Flag is down to the enthusiasm and drive of the local steering group run by residents with support from the parish and borough councils, the police and other local organisations.

The assessors were particularly impressed with the level of community participation and the commitment of local residents. An initiative to reward licensed venues for

achieving the highest standards was considered to be a national exemplar scheme.

Any community suffering from even a small amount of evening disorder could well learn something from Stockton Heath.

**SHOULD residents of Knutsford and Mobberley be rejoicing over the one-off grant from Manchester Airport which will result in lower council tax bills this year?**

Well, yes - up to a point.

But we should not forget that negotiations over compensation for aircraft noise arising from the airport's second runway have been going on since the runway opened in 2001.

Nor that the grant is a one-off payment while the noise problem will be an on-going problem.

We know a Knutsfordian who returned to his home town after many years to visit relatives, who literally dived under the kitchen table when he heard the noise of an aircraft passing over the house. He would not return to live in Knutsford at any price - and the house involved was not one of the 583 where the owners received extra payments for being directly under the flight path.

Knutsford and Mobberley have had to learn to live with aircraft noise - as have many other communities

The one-off payments are welcome - but we shouldn't get too excited about them.

## Golf club raises £12,600 for good causes

**HARD working members of Warrington Golf Club have helped raise £12,600 for four local charities.**

Cheques were presented to the recipients at a ceremony at the Appleton based club.

St Joseph's Family Centre received £6,200, the Samaritans were given £3,100, and Macmillan Cancer Support received £3,100.

The Junior Section of the Club also raised £400 for St Rocco's Hospice.

Captain Walter Winstanley and Lady Captain Margaret Croft said that

despite the extra effort that had to be put in during a period of financial difficulty, there had also been a lot of enjoyment during the fundraising events.

Highlights included a Charity Am-Am golf event, a Sportsmen's Dinner and for the first time a Craft Fair, which featured a book of members' favourite cooking recipes. Other events included quiz nights, bridge drives and raffles.

Mr Winstanley said: "Margaret and I are very proud of what has been achieved this year. The members of Warrington Golf Club should be

congratulated on their generosity. They all have great hearts when it comes to supporting these important local causes."

■ Pictured with their cheques (front row from left to right) are Mark Austin, a fundraiser for St Rocco's, Brian Carter, a volunteer for the Samaritans, Rita Mahon from the St Joseph's Family Centre and Jane Allen of Macmillan Cancer Support.

(Back row left to right) Des Appleton club member and a St Joseph's volunteer, Walter Winstanley, Richard Broadbent, chair of the trustees at St Joseph's and Margaret Croft.



# Stately home to be a theatre – for one night

**ONE of Cheshire's finest stately homes will be turned into a theatre for one night - courtesy of college students.**

More than 60 performing arts and music students will take part in a series of dance and musical pieces in different rooms at Arley Hall on February 14.

Contemporary dance and live music will be performed in the library, dining hall and on the ornate staircase.

General manager Garry Fortune said: "We've not seen anything like this at Arley before and it will be a unique way for people to see the hall.

"We've been working closely with the students and it sounds like they have come up with some great ideas about how to use the space."

The students, from Warrington's Priestley College, have devised the choreography and production arts students have taken responsibility for managing and marketing the event.

Jess Collins, 17, said they were looking forward to performing in the grandeur of the house, which is owned



■ Jess Collins at Arley Hall.

by Lord and Lady Ashbrook.

"It is an amazing set in itself," she said. "We're hoping to bring it to life with some great music and performances."

The youngsters have been rehearsing for the event at college in spaces marked out to the size of Arley's historic rooms.

Guests will be greeted with a complimentary glass of wine and

nibbles in the Tudor Barn before making their way into the hall itself.

There will be two performances, one starting at 7.30pm and the other at 8.30pm.

Tutor Mark Edgington said: "There will be an element of choice to the performance because people will be able to wander around the hall and decide what they want to watch as they go."

Tickets for the two performances - which can each accommodate 100 people - are available by calling Priestley College on 01925 633591 and asking for the cash office between 10am and 2pm.

## Unique heritage trail links villages

PUPILS from seven schools provided the inspiration for a unique Queen's Jubilee Heritage Trail linking three villages.

Innovative wood carvings, depicting the six decades of the Queen's reign, plus one depicting Royalty generally, have been placed in the grounds of the seven schools.

Now residents of the three villages - Stockton Heath, Appleton and Stretton - are being invited to "follow the trail" around the seven schools.

The schools involved are Appleton Thorn Primary, Broomfields Junior, The Cobbs Infant and Nursery and St Monita's RC Primary, all in Appleton, Stockton Heath Primary and St Thomas' CE Primary, both in Stockton Heath, and St Matthew's CE Primary, Stretton.

Last summer, the schools started work on the project, each choosing a decade to research. Pupils then had great fun drawing pictures representing the idea of "Royalty and the Queen" and events which happened during each decade.

Then local chainsaw wood carver Lucinda Brito selected drawings, carved them on to a piece of oak and then onto a 3D shape of a book and a crown to provide a permanent commemoration of the Jubilee.

Each school is now proudly displaying their own carving in their grounds.

The project was supported by Appleton, Stockton Heath and Walton Parish Councils.

## Sign of the times!

**A VILLAGE councillor is seeking expert help in restoring an ancient road sign which can no longer be read.**

Mike Biggin, who represents Grappenhall on Warrington Borough Council, believes the old cast iron sign post dates back to Victorian Days and had intended giving it a lick of paint himself.

But closer inspection revealed that corrosion has made the sign unreadable, so now he is seeking some expert help and advice.

It is believed the sign, which is located on Knutsford Road, on the opposite side to the Springbrook pub, would have been a distance marker.

"This is another piece of our local history which I am anxious not to

lose," said Mike.

"I had even bought the paint to do the job, but when I took a closer look I realised you could no longer read anything on the sign.

"It needs an expert sign writer so if anyone can help out I would love to hear from them."

Mike can be contacted on 01925 213612 or 07920 288 974 or by email [mbiggin@warrington.gov.uk](mailto:mbiggin@warrington.gov.uk)

■ Mike Biggin and the historic sign.



# River cruises

Why not try a River Cruise exploring the scenic rivers of Italy, Spain, China, France, Portugal, Russia, Vietnam, Ukraine, Croatia, Egypt etc There is also a 3 river cruise which lets you experience the Rhine, the Moselle and the Main. Relax and enjoy the picturesque waterways with time to experience the delicious local cuisine and fine wines. Take time out exploring the cities and cultural and historic sights at each destination.

Fly from your regional airport or for some Europe cruises depart using Eurostar from London.

Once on board you will benefit from full board meals so all you will have to pay for would be any drinks.

Most cruises are 7 night duration with the option to stay in a hotel at the end of your cruise from 2 to 7 days.

On some boats you can chose large picture window or French balcony or full open air balcony. Whilst on board you there is onboard entertainment with live music performances and talks if you wish to attend.

There is never a point where the boat cannot dock therefore no problems with tenders and off shore docking.

Whilst on the cruise there are optional excursions ie trips to gardens, palaces, towns, wine regions, guided walking tours, historic tours, wine tastings, bulb fields, ancient cities, Mozart & Strauss Concerts etc.

You will have a dedicated Tour Manager, flights, transfers and your cruise included in your costing, If booked prior to 12 weeks before departure we can take a deposit and then final balance will due at 12

weeks before date of departure.

The only arrangement you will have to do is take out Travel Insurance with your usual provider to cover your trip and make sure your passport has 6 months validity from date of re-entry into the UK.

Don't hesitate to contact us for a quote, remembering the earlier you book the better choice you have as they soon get fully booked.

Call us on 01925 269400 or email



■ Linda Crowder – Stockton Heath Travel

us on enquiries@stocktonheathtravel.com

Follow us on Twitter & LinkedIn, like us on Facebook.



*Keep the village alive support your local traders!*

## STOCKTON HEATH TRAVEL

### Special Offers

**Tulips and Windmills**  
6 nights departing by coach  
6 night River Cruise  
Perfect mix of city, riverscapes & spring colour  
Various dates from £499pp

**German Rhineland**  
7 nights  
including regional flights  
based on 2 people sharing  
From £949pp

**Discover Douro River**  
7 nights  
including regional flights  
based on 2 people sharing  
From £869pp

Stockton Heath Travel Centre  
**01925 269400**  
80 London Road  
Stockton Heath  
enquiries@stocktonheathtravel.com



# TailorMade for you...

**Contact us:**  
TailorMade House  
Unit 1, Olympic Way  
Olympic Park  
Warrington, WA2 0YL

**Tel:**  
**01925 810595**  
Quoting Ref: WW01

**Or e-mail:**  
info@tailormadegroup.co.uk  
www.tailormadegroup.co.uk

TailorMade Independent Ltd is authorised and regulated by the Financial Services Authority and is entered on the FSA Register under reference number 506611

TailorMade Independent Limited is a local independent financial advisory company who can offer advice on the merits of moving preserved pension schemes into a SIPP.

A SIPP is a Self Invested Personal pension and is a form of personal pension scheme which gives YOU the freedom to choose and manage your own investments. It's a pension vehicle for people who desire more control over their funds, allowing them to decide which investments are appropriate to them specifically (subject to certain HM Revenue and Customs restrictions) rather than their investments being managed within a pooled fund chosen by a third party. A SIPP can be set up with funds from existing pension arrangements, by making contributions, or from a combination of both. It is also possible for your employer to make contributions to your SIPP.

A SIPP is essentially a financial service 'wrapper' that brings together all of your current

pension schemes and investments, bringing greater flexibility and control over your retirement plans. The major advantage of using one of these wrappers is the tax benefits. In the long term, tax can have a huge impact on the return of your investments, subsequently more and more customers are choosing Self Invested Personal Pension plans to keep their investments under one tax efficient umbrella. Therefore rather than being limited by traditional pension plans, these pension wrappers improve control, transparency, simplified charging structures and offer a much wider range of investment options. Contributions can also be made on a straight forward basis via standing order. Contributions can be increased, decreased, ceased and commenced without penalties, putting you in control of your regular contributions taking consideration of your

financial circumstances at the time.

If you would like to find out more about TailorMade and the services we offer, please come along to the TailorMade Open Day on Friday 8th March, where you can meet the teams and also have the chance to attend some seminars on SIPPs and Retirement Planning.

A SIPP is a type of pension for people comfortable making their own investment decisions about their retirement. Investments go down in value as well as up so you could get back less than you invest.



Do you have any **preserved** pension arrangements? • Would you like to decide where **your** pension fund is invested? • Would you like **all** your funds in **one** place? • Would you like the option to put **your** funds into a **wider variety** of Investments? • Would you like a more **proactive service** from your pension provider? • Have you been **dissatisfied** with your current pensions performance? • Are you **concerned** about having enough income when your time comes to retire? If you answered yes to any of the above questions.

**It's time to act...**

# Group Tickets

## £5 Family Day Return



Great value for 2, 3 or 4 people travelling together when at least one person is under sixteen, these tickets can be bought on the bus and are valid for one return journey anytime on the day of issue, except before 09.00 on school days.

## £8 Family Day Rover

Great value for 2, 3 or 4 people travelling together when at least one person is under sixteen, these tickets can be bought on the bus and are valid for unlimited travel anytime on the day of issue, except before 09.00 on school days.

## £10 Adult Group Day Rover

Great value for 2, 3 or 4 people travelling together. These tickets can be bought on the bus and are valid for unlimited travel anytime on the day of issue.

## Network Warrington will be changing the times of a number of its services from Monday 28 January 2013

A number of routes will see revised timetables, particularly during off-peak periods in order to improve reliability, some services will be changing their routes and some new links will be created.



- 13** **Service 13** will cease to serve Whittle Hall (which is served by 17/17A & 29) and will form a new link to Sainsburys at Chapelford.

---

- 29** **Service 29** will no longer serve Collins Green and Burtonwood, these areas will be served by a new **route 33** which will be provided by another operator funded by Warrington Borough Council.

---

- 48** **Service 48** to Dudlows Green is withdrawn, however, Longwood Road will continue to have a peak service to/from Warrington (**10A**) and the **7A** will provide the off peak link including a new link to Grappenhall Heys (**7C**)

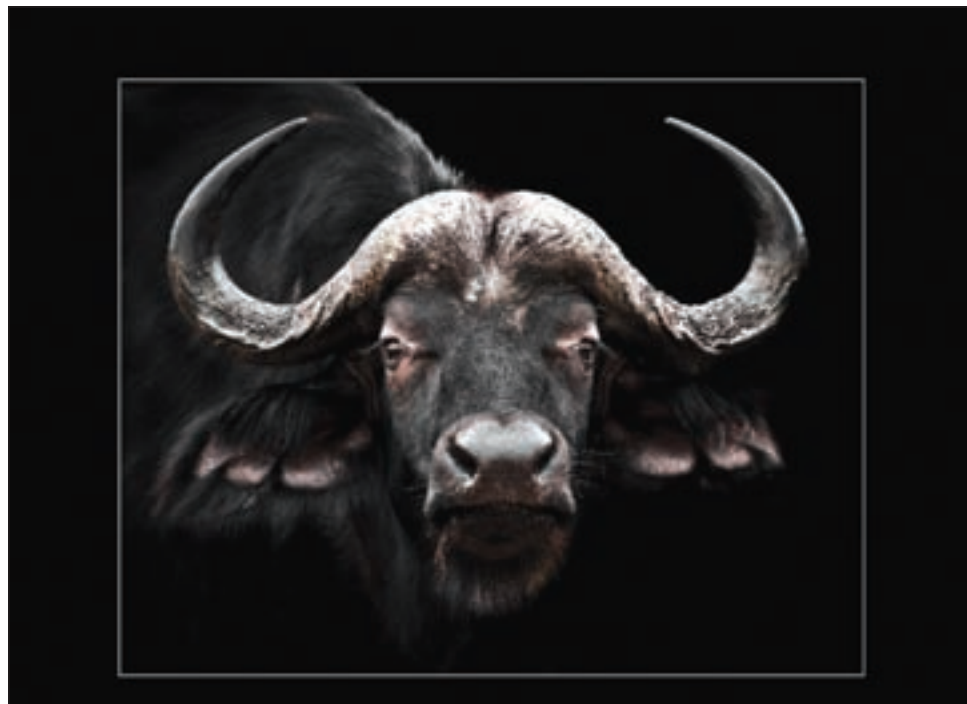
---

- 10C** **New off peak service 10C** will provide a link from Gainsborough Road to the shopping area at Latchford then on to Stockton Heath.

New leaflets for all services are available from our Travel Centre at Warrington Bus Interchange from **Monday 14 January**, they can also be accessed through our website, and we will also be delivering copies to outlets such as libraries and post offices across the Borough.

[www.networkwarrington.co.uk](http://www.networkwarrington.co.uk)





# Wildlife photographer scoops top prizes

**GLOBE-TROTTING wildlife photographer Lesley Wood scooped two prestigious awards at the Society of Wedding and Portrait Photographers' annual international convention for professional photographers in London.**

The former research biologist from Stretton won the society's Wildlife Award as well as the Overall Natural World Award for a close-up portrait shot of an African buffalo she had taken on one of her photographic safaris to Botswana.

"After winning the Wildlife award, the image qualified for the final of the Overall Natural World competition, explained Lesley, a mum of two grown up boys.

"When I heard the news that I had won the overall title I was absolutely delighted."

TV and radio personality Maggie Philbin presented Lesley with her award telling her: "This was my favourite picture of the night."

Of course success in photography competitions is nothing new for the former Pet Photographer of the Year who last year was presented with nine gold awards for her pet, wildlife

and fine art photography by "The Society".

Now Lesley is starting to plan her next photographic safari having visited Africa, South America and India in recent years. The amazing wildlife images she has captured on her travels have not only won her great artistic acclaim - but have proved to be popular purchases for art lovers who proudly display the works on the walls of their homes.

"My safaris have given me valuable opportunities to photograph some stunning animals, many of which are now endangered species, so I am determined to continue with my travels as soon as I can. Most people are fascinated by images of animals in the wild.

"In fact one judge's comments on my African buffalo print will stay with me for the rest of my life. She said: "That photo stopped me in my tracks and made my heart beat faster."

For further information click onto [www.wildearthfineart.com](http://www.wildearthfineart.com)

■ Pictures show (top) the African Buffalo print and below Lesley Wood with Mike McNamee of the SWPP



## COMPETITION

# Win a bottle of Greenall's gin!



**WARRINGTON'S G&J Greenall are England's oldest continuous gin distillers - and Village Life readers have an opportunity to win a bottle of their famous 'Greenall's Original London Dry Gin' in an easy-to-enter competition.**

The gin is now produced at a modern distillery in Birchwood after relocating following a disastrous fire at premises off Loushers Lane.

But originally it was produced in Bridge Street where the unique recipe was created by Thomas Dakin in 1761.

Originally called "Warrington Gin" it was an immediate success - partly because of the ease of transportation between Warrington and Manchester and Liverpool, but also because of the drink's distinctive flavour.

More than 100 years later, the drink was renamed Greenall's, but continued to be made - as it is today - according to Thomas Dakin's original recipe

To enter our competition, readers should write to  
 Village Life  
 New Media Centre  
 Old Road  
 Warrington  
 WA4 1AT  
 or email  
[info@warrington-worldwide.co.uk](mailto:info@warrington-worldwide.co.uk)

with the answer to the simple question:

**What year was the recipe for Greenall's Original London Dry Gin created?**

Readers should include their full, postal address and a day time contact number.

**Entrants must be 18 years or over. Closing date: Friday, March 1, 2013**

# New pond for children's zoo

**WORK has started on construction of a new duck pond at the children's zoo at Walton Hall Gardens.**

As a result, parts of the zoo will be closed to the public for some time.

Built more than 40 years ago, the existing pond has developed leaks and is difficult to keep clean.

The new pond will have a breeding island for unusual breeds of ducks, swans and geese. There will also be an extension to the Red Squirrel breeding cage, which is sited next to the pond, with an 'over water runway' enabling the squirrels to move from one cage to another.

There will also be a waterfall and a rockery and the pond will have special filters to help keep the water clean.

The project has been funded by FCC Environment Ltd, through Landfill

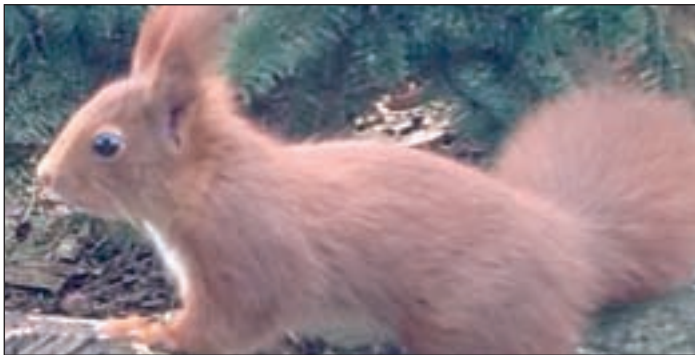
Communities Funds distributed by WREN.

Warrington Borough Council and the Friends of Walton Estate have also made contributions.

Richard Smith, grant manager for WREN said: "We are really excited to be involved in a new phase of improvement works at the children's zoo."

"WREN aim to fund projects that make a real difference to local communities and hope the zoo is used and enjoyed by people of all ages for many years to come."

Red Squirrels have been bred at Walton Hall Gardens for some years and when old enough are released in the wild in areas where they are still able to thrive.



**The Park Royal, Stretton, Warrington**

**New year, new you**  
Free one day gym pass for two.  
Worth £30!

Join today!  
and get one month free.  
*Offer limited to the first 50 people.*

**01925 730000**  
[www.QHotelsgyms.co.uk](http://www.QHotelsgyms.co.uk)

Terms and conditions apply.

For a beautiful new kitchen this New Year...

**just change the doors**

**We'll pay the VAT This month**

This year your New Year's resolution, just might come true ...

- Huge choice of Doors, Worktops, Appliances, Sinks & Taps
- Senior citizens discount
- From doors to complete kitchens
- Made to measure custom-built doors and units
- Free Estimating and planning
- Low cost with minimal hassle and disruption

\*Terms & Conditions apply, please ask in store for full details.

**DREAM DOORS®** Est. 1999

**NEW LIFE FOR OLD KITCHENS**

Visit our Showroom: 92 Knutsford Road, Grappenhall, Warrington WA4 2PJ

Call now for a Free Design quotation

**Tel: 01925 211308**

[www.dreamdoors.co.uk](http://www.dreamdoors.co.uk)

View our credentials at **Checkatrade.com**



# Globetrotting Paul has a 'disease' called old bikes!



**GLOBETROTTING bicycle collector Paul Adams has more than a passion for his hobby - he has a "disease!"**

Now aged 71 Paul still thinks nothing of travelling more than half way around the world to add to his collection of nearly 200 bikes - despite suffering a stroke which nearly killed him in May 2010.

He suffered the stroke at The Cycle Museum he set up at Walton Hall and Gardens 12 years ago.

"As strokes go it was a bad one," says Paul. "I was left paralysed and my memory had gone!"

But Paul believes his passion for bikes helped him on the road to recovery - and although he can no longer ride his beloved "Bone Shaker" or "Penny Farthing" he invested in a tricycle so he could get back in the saddle.



"I would recommend anyone who suffers a stroke to get a hobby."

Paul says his obsession, which he calls a "disease" came out of the blue but probably stemmed from owning a vintage car when he was a teenager.

He remembers exchanging a pair of old headlamps for a 1920's child's treddle machine which was just hanging up in someone's garage - the rest is history!

His globetrotting search for old and historic bikes has taken him to France, America, Canada and even New Zealand -and he is planning to travel to Cuba in March.

When he buys a bike abroad he dismantles it and places it carefully in hand luggage to bring home, abandoning what he has taken out with him in his case!

"As long as you leave a window in the packaging so customs can see it is an old bicycle it doesn't cause a problem," added Paul.

His collection covers the entire history of bicycles with the "Bone Shaker" made in 1869 being one of his favourites alongside a "Penny Farthing" dating from 1877.

Over the years he has rubbed shoulders with some of the world's greatest cyclists including Chris Boardman, Sir Chris Hoy and Sir Bradley Wiggins.

He also had the honour of Her Majesty the Queen opening a small museum, which used to be based at Runcorn Police Station before he moved the collection to Walton Gardens.

His Museum is open most Saturdays and by arrangement on other days and is free to visit - but in reality Paul can be seen most days tinkering with his collection - because his obsession is a "disease."



Advertiser's announcement

# Exciting new health partnership

**REPRODUCTIVE Health Group and Cheshire Natural Health are pleased to announce an exciting new partnership.**

Reproductive Health Group has been created from the practices of three of the North West's most eminent gynaecologists and fertility experts - Luciano Nardo, James Armatage and Nabil Haddad.

All three have significant reputations as leaders in their fields who offer exceptional experience and expertise. Working from some of the leading healthcare facilities in the North West and supported by a team of highly experienced specialist staff, the consultants provide high quality, personalised and cutting edge care for all aspects of gynaecology, fertility and assisted conception. They have created Conceive International for the thousands of patients each year who experience fertility related problems. Conceive International offer the best possible chances of conception, through use of the latest available technology and personalised packages of care tailored to the individual needs of their patients. All aspects of fertility care are offered, from diagnostic tests through to assisted conception techniques such as IVF or ICSI and genetic screening.

Reproductive Health Group's gynaecology practice is GyneHealth, providing a comprehensive and innovative service for the full range of gynaecological conditions, including specialist consultations for endometriosis, fibroids, menopause, period problems, polycystic ovary syndrome, recurrent miscarriage and cancer screening.

Appointments are available with Conceive International and GyneHealth at a

network of clinics throughout the North West.

Reproductive Health Group believe that combining conventional medicine with complementary care can help bring optimum health and wellbeing and are pleased to announce their new partnership with Cheshire Natural Health.

Conveniently located only minutes from the motorway network yet in the heart of the Cheshire countryside, Cheshire Natural Health share the philosophy of combining the wisdom of natural therapies with advances in modern medicine. The clinic provides a wide range of treatments from some of the most of experienced therapists in the North West within their spacious and well-equipped premises in Stretton. Therapies on offer include reflexology, acupuncture, nutritional therapy, hypnotherapy, homeopathy, natural family planning, counselling and there is also a private GP service available on site.

To celebrate this new partnership, Reproductive Health Group and Cheshire Natural Health invite women of all ages to come along to an Open Evening on Women's Health on Monday, February 25 6pm - 9pm, at Cheshire Natural Health, Beehive House, Tarporley Road, Stretton, WA4 4ND. Experts from both organisations will give a series of informal talks on a wide range of women's health issues, from fertility to menopause. There is no charge to attend the evening and free parking is available at the clinic. To reserve a place please contact 0845 600 9997 or email [education@gyne-health.co.uk](mailto:education@gyne-health.co.uk).

For more information visit [www.gyne-health.co.uk](http://www.gyne-health.co.uk) or [www.conceiveinternational.co.uk](http://www.conceiveinternational.co.uk) or [www.cheshirenaturalhealth.co.uk](http://www.cheshirenaturalhealth.co.uk)

## Premiere-style opening for cinema

KNUTSFORD'S new Curzon Cinema will officially open on Wednesday, February 27 with a premiere-style reception.

The cinema will be much more than a re-branded civic centre. About £110,000 is being spent on refurbishments to the foyer and café area - although the cinema will be remaining open for business while the work goes on.

Rob Kenny, director of cinema development for Curzon Cinemas, said: "The refurbishments will give the local community a space to engage with amazing films, as well as each other.

"The cinema is remaining open for business throughout these works, allowing our cinema audience to enjoy films such as Lincoln, starring Daniel Day-Lewis and Hitchcock, featuring Anthony Hopkins and Helen Mirren."

Curzon Knutsford will be the company's seventh cinema - and the first outside London.

The initial refurbishment of the foyer and café will mark the start of major changes to the building, which Curzon are leasing from Cheshire East Council.

Projection equipment is being updated with the latest digital technology which will enable an improved, flexible and diverse programme of films - including films made by independent producers - to be screened.

Online streaming technology will enable the venue to present special live events from London and elsewhere, ranging from the Metropolitan Opera and the National Theatre, to rock concerts.

The site in Toft Road has a long cinema tradition. The present Civic Centre, with its studio cinema, opened in 1991 but the old Marcliff Cinema it replaced dated back to 1935.



## Community library to close

A LIBRARY started by volunteers is closing to enable major improvement works to take place following grants totalling £45,000.

Grappenhall Community Library will be closed for up to eight weeks, most likely until Easter.

This is to enable building work to add a new disabled toilet and enhanced kitchen to be added to the existing building.

A £45,000 grant from Wren and the Big Lottery Fund has enabled the project to be started. The charity expects benefits to be delivered for all users, but in particular older visitors and carers with young children.

Book loans will be extended for the period and the library will welcome everyone back to a vastly improved building in the very near future. More information can be obtained at Grappenhall Community Library's website at [www.Grappenhall.org.uk](http://www.Grappenhall.org.uk) or on Twitter at @FOLGrappenhall

## Travellers' camp rejected by planners

A CONTROVERSIAL plan to expand a travellers' camp on Green Belt land at Grappenhall has been thrown out by planning chiefs.

Councillors visited the site in Cartridge Lane, Grappenhall and then voted to accept the advice of their officers and refuse retrospective planning consent.

Traveller John Smith sought permission to change the use of part of the site to enable two mobile homes and 10 touring caravans to be sited there.

Utility blocks, a septic tank and additional hard standing were also included in the application.

Temporary permission to use the site was granted after an appeal in 2008, despite furious opposition from nearby residents and parish councils.

But this consent expired in 2011, making the whole site unauthorised.

Planners said unlike the proposals put forward in 2008, the new application would represent a "major" development if it were for conventional housing.

Approval of the application would facilitate the evolution of the site into a significant base for the applicants, their various businesses, their vehicles and animals

More than 200 people wrote letters of objection and 600 signed a protest petition.

Local councillor Mike Biggin said: "The applicant has demonstrated by his actions that he is unlikely to abide by the law or by the conditions set down by even the expired temporary permission. Although we have no prejudice against the travellers or

their lifestyle choice it is plainly unfair, in the view of many, that they should be allowed to continually flout planning law"

A residents' spokesman said: "We wish the travellers well in finding a more suitable settlement to match their needs but feel that this particular site is unsuitable. It is not only unlawful, but out of keeping with the local environment."

The travellers have the right to appeal against the decision

## 'Bra-vo' for recycling!

KNUTSFORD'S household recycling centre at Shaw Heath is piloting a "bra bank" initiative to boost funds for breast cancer research, reduce waste and help the Third World.

For every tonne of bras collected, contractor BCR Global Textiles will donate £1,000 to the charity Breast Cancer Campaign. This will contribute to their national campaign, which, to date, has raised almost £190,000 towards its target of £1.5m.

In addition to the donation, all reusable bras will be sent out to Third World countries. The remaining bras will be recycled.

# Open Evening

on

## Women's Health



Monday 25th February 2013  
6pm-9pm

at Cheshire Natural Health

Beehive House, Tarporley Road, Stretton, Warrington, WA4 4ND



An opportunity to hear leading gynaecology and fertility consultants  
and natural health practitioners on:

Fertility  
Pelvic Pain  
Menopause  
Acupuncture & Fertility  
Hypnotherapy for Stress & Fertility  
Homeopathy & the Menopause  
Herbal Medicine & Nutrition for Women's Health  
Women's Sexual Health

There is no charge to attend this event, however places are limited so please reserve  
your place by telephone or email. Drinks and refreshments available.



T: 0845 600 9997 or  
E: [education@gyne-health.co.uk](mailto:education@gyne-health.co.uk)



**NEW OR RECONDITIONED STAIRLIFTS FOR SALE**  
 Acorn - Bison - Brooks

NEW Straight Stairlift £1,250  
 NEW Curved Stairlift from £4,500

18 months warranty for a limited period only  
 Free Survey 12 & 18 months warranty

Reconditioned Curved Stairlift from £3,500 - with 18 months warranty

**Call Liftways Ltd**  
 0161 928 9348 or 07971 476 251

Established 2001  
**Liftways Ltd**  
 Wellington Park, Altrincham, WA15 8JA  
 liftways@btinternet.com | www.liftways.com



**STOCKTON FRYER**

**NEW Flavours**  
 Now Available  
 Chargrill Kebabs

Fish & Chips, Chinese Meals, Burgers, Kebabs and more...

We deliver to WA4: Stockton Heath, Stretton, Latchford, Appleton Thorn, Grappenhall, Pewterspear, Walton  
 Fri & Sat 5pm - 10.30pm and Sun-Thurs 5pm - 10pm

Minimum order of £10 (£1 delivery charge applies)  
 Over 4 mile radius £2 delivery

Phone orders for Chinese meals welcome  
**Tel: 01925 264345**  
 111, London Road, Stockton Heath, Warrington, WA4 6LG

**ABC wood floor studio**

- Real Woods
- Cushion Flooring
- Amisco
- Laminates
- Under Floor Heating
- Oak Doors & Much More

Save the VAT  
**20% OFF**  
 with this advert

190 Knutsford Road  
 Grappenhall  
 Warrington  
 WA4 2QU

Professional Wood Floor Craftsmen available and FREE Moisture & Damp Test when fitted by us!

abcflooringsupplies@googlemail.com  
**01925 604451**

www.abcflooringsupplies.co.uk



Want to lose upto 2 dress sizes without dieting or surgery?  
**Non Surgical Laser Lipo is the answer!**  
 Instant result, non invasive & painless

*Sculpt*  
 med spa

Book your FREE consultation now!  
**01925 601761**  
 Special offer £25 trial session.  
 165 London Rd, Stockton Heath



**Hot Towel Shave**  
 gift vouchers available

Treat your man to a Valentine's Hot Towel Shave

**01925 267 006**  
 7 London Road • Stockton Heath  
 Warrington • WA4 6SG  
 www.beoriginal.uk.com

*The Original Barber Shop*



**THE NEW MEDIA CENTRE**  
 OLD ROAD, WARRINGTON WA4 1AT  
**01925 240247**  
 info@247print.net

**twentyfour seven**  
 design & print ltd

**10,000 A5 FULL COLOUR £248.00**  
 PAY FOR 1 SIDE GET THE OTHER SIDE PRINTED  
**FREE**

**500 FULL COLOUR Digital Business Cards**  
 (Buy 1 set, get 1 set free) **£35.00**

**100 A3 FULL COLOUR POSTERS**  
**£38.00**

**60"X40" FULL COLOUR POSTERS ONLY £12.00 EACH**

ALL PRICES ARE SUBJECT TO VAT

**CHESHIRE GOLD XCHANGE**


**WE WANT YOUR GOLD & SILVER FOR INSTANT CASH!**

Did you know...?  
 We accept silver jewellery, cutlery, tea sets, spoons, cigarette cases, candlesticks, trophies, trays, medals, coins and pocket watches.

ALL ITEMS OF JEWELLERY ACCEPTED  
 GOLD & SILVER BULLION DEALER

Open: Tuesday-Saturday: 10am - 5.30pm  
 1 London Road, Stockton Heath (First floor entrance on Fairfield Road)  
**07544 486 621**

Provided by:  
**WatkinsonBlack**  
Chartered Accountants



**Chartered Accountants**

**Registered Auditors**

Contact  
**David Watkinson**  
or **Margaret Black**  
at:  
1st Floor,  
264 Manchester Rd  
Warrington

**Tel:**  
**01925 413210**

or email:  
info@warringtonaccountants.co.uk  
www.watkinsonblack.co.uk

# Money Column

By Margaret Black

## How schools may have to respond to funding changes

WatkinsonBlack accountants attended a meeting held at Culcheth High School in January. The meeting had been arranged between a number of schools within the Warrington area. The purpose of the meeting was to discuss the possibility of the schools joining together to become a cluster of schools who would share the cost of mutual supplies and services.

Many of the services required of a modern school are beyond the financial capacity of a single school to provide without external assistance, whether that is from the local authority or some other source. The fact that 30 plus representatives from the various schools attended the meeting on the night shows that this is a major concern not only to the people who were there but in the education system in general.

Our short presentation considered some of the practical business models available to those schools represented focusing mainly on how to deliver local services in an efficient and cost-effective manner. Each of the models we drew attention to highlighted an increasingly formal collaboration between schools to

provide those services. Turning away from the traditional manner in which schools operate i.e one school, with one head teacher and board of governors operating independently of any other school.

There is an 'Informal Collaboration' between schools. This is where a group of schools join forces to achieve certain specified and limited mutual objectives, such as a specialist educational needs, whilst maintaining separate governing bodies and operating independently in all other respects.

Then there is a 'Chain' or 'Cluster' which is a formal arrangement within which a group of schools join together to achieve specified mutual objectives, but in this case it is under the leadership of one of the member schools.

Lastly, there is a 'School Company' this is the most formal arrangement where a group of schools form a Company to co-operate in partnership to deliver cost effective services, by sharing resources. It is possible for the company to be formed as a 'Community Interest Company'. This is a company whose



David Watkinson and Margaret Black

objects are to benefit the community as a whole in certain specified ways.

If you are part of the education system and you are aware of others who are concerned about funding changes we may be able to assist in an advisory capacity.

Please note that these ideas are intended to inform rather than advise and you should always obtain professional advice before taking any action.

Telephone 01925 413210 or e-mail on margaret@warringtonaccountants.co.uk

The Money Column provided by WatkinsonBlack Chartered Accountants, 1st Floor, 264 Manchester Road, Warrington, WA1 3RB.

Accountants who care, for clients who matter.

**WatkinsonBlack**  
Accountants who care for Clients who matter



# Want to save money? Join the Club!

(over 400,000 people already have)

- ✓ Save money or get back 'Double the Difference'
- ✓ Save on phones, broadband and energy!
- ✓ Which? Recommended Provider for Broadband and Home Phone Services
- ✓ UK's cheapest online shopping
- ✓ Up to £200 to help you switch
- ✓ CashBack on shopping and petrol
- ✓ Award-winning customer service
- ✓ One simple bill for all your utilities



96% OF CUSTOMERS WOULD RECOMMEND THE CLUB TO A FRIEND

To start saving, contact:

**Village Life**

**0800 955 5247**

info@warrington-worldwide.co.uk

www.utilitywarehouse.org.uk/orbit



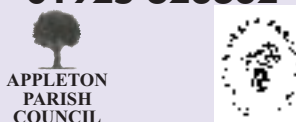
Changes, terms and conditions apply. Some benefits available only to customers with 'Gold Status' (ie customers who apply for four or more main services, and pay by Direct Debit). For full details of the Double the Difference Price Promise see the Utility Warehouse website.



# What's On in the Villages

- February 12**  
STOCKTON HEATH PARISH COUNCIL  
Sandy Lane Centre, Stockton Heath. 7.30pm
- February 14**  
LIVE AT ST WILFRID'S  
Nemtsov Duo, Mikhail ('cello) and Elena (piano). Russian brother and sister playing works by Beethoven, Tchaikovsky, Shostakovich and Martinu.  
St Wilfrid's Church, Grappenhall. 7.30pm
- February 19**  
APPLETON PARISH COUNCIL  
Parish Hall, Dudlow Green Road. 7.30pm  
ST MARY MAGDALENE MONDAY CLUB  
St Mary Magdalene Church, Appleton 1.30pm  
COUNTRY DANCING CLUB  
St Thomas' Primary School, Parkgate Road, Stockton Heath.  
8-10pm. Details: 01925 262356  
BRIDGE CLUB  
Grappenhall Village Sports Club  
Stockton Lane. 7.30pm. Details 01928 712233  
LADIES' FRIENDSHIP CLUB  
The Quays Community Centre, Thelwall New Road, Thelwall.  
8pm. Details: 01925 264099
- Every second Monday**  
PARK (APPLETON) WI  
Appleton Parish Hall, Dudlow Green Road.  
7.30pm
- Second and fourth Monday**  
WARRINGTON ART GROUP  
Bellhouse Community Centre, Bellhouse Lane, Grappenhall. 7-9pm.
- Every third Monday**  
NATIONAL VEGETABLE SOCIETY  
Cheshire District meeting  
Grappenhall Ex-Servicemen's Club, Chester Road, Grappenhall.  
8pm. Details: 01925 265773.
- Every fourth Monday**  
MARLFIELD WI  
Independent Methodist Chapel,  
Knutsford Road, Grappenhall. 7.30pm
- Every Tuesday**  
COFFEE MORNING  
St Cross Church, Appleton Thorn. All welcome.  
10am-12 noon  
PHOTOGRAPHIC SOCIETY  
Quays Community Centre,  
Thelwall New Road, Thelwall. 7.30pm.  
Contact: 01925 757582.  
COFFEE MORNING  
Appleton Independent Methodist Church  
Appleton Parish Hall, 10am-12 noon
- Second and Fourth Tuesday of each month**  
STOCKTON HEATH & DISTRICT LIONS  
Ram's Head, Grappenhall.
- Every Wednesday**  
APPLETON HALL BADMINTON CLUB  
Starting December at Hall Drive, Appleton.  
7.30-10pm. Details: 01925 262356
- Every first Wednesday**  
Walton WI  
St John's Church Community Hall. 7.30pm
- First and third Wednesday each month**  
NATIONAL ASSOCIATION OF WOMEN'S CLUBS  
Sandy Lane Centre, Stockton Heath.  
8pm. Details: 01925 268311  
STOCKTON HEATH PROBUS CLUB  
Warrington Sports Club, Walton Lea Road,  
Higher Walton.  
Details: 01925 268540
- Every third Wednesday**  
HIGHER WALTON WI, St John's Community Hall,  
7.45pm. Details 01925 262001.
- Every fourth Wednesday**  
ALZHEIMER'S SOCIETY  
Support Group, Brampton Lodge Day Centre,  
Bridge Lane, Appleton. 6.30-8.30pm
- Every Thursday**  
THE SILVER QUAYS Senior Citizen's Club  
The Quays Community Centre, Thelwall New Road, Thelwall. Details: 01925 753474.  
BRIDGE CLUB  
Grappenhall Village Sports Club  
Stockton Lane. 7.30pm. Details 01928 712233
- Every second Thursday**  
STRETTON WI  
Appleton Parish Hall, Dudlow Green Road.  
2.30pm.
- Every third Thursday**  
NORTH EAST CHESHIRE FLOWER CLUB  
Appleton Parish Hall, Dudlow Green Road. 2pm  
Details: 01925 740419  
GRAPPENHALL WI  
Grappenhall Community Centre, Bellhouse Lane  
2.15pm
- Every Friday**  
APPLETOTS TODDLER GROUP  
Appleton Parish Hall, Dudlow Green Road.  
9.45-11.30am. Details: 01925 268153.

To list your event call **Village Life on 01925 623632**



# The Teddy Bears are back



**THE annual jazz concert organised by the Lymm and Thelwall branch of Contact the Elderly will be held at Grappenhall Community Centre on Friday, February 15.**

As usual the popular Chicago Teddy Bears jazz band will be providing the music and the £12.50 admission charge will include a two-course supper.

The Teddy Bears play a wide range of music, ranging from jazz classics to comedy numbers. The usual line-up is Ken Doran (trumpet and vocals), John Hallam (saxophones and clarinet), Brian Singleton (drums and vocals), Rae Owens (bass and vocals), Frank Slater (trombone), Neville Goodwin (piano) and Tony Ormesher (banjo and guitar).

Contact the Elderly rely on the concert to raise money to organise afternoon teas, trips out and other functions for elderly people in the local area.

Further details are available from Colin Melrose on 01925 756742.

## Gold dealer is a gem



A STOCKTON Heath jeweller has emerged as a fair and honest trader in an investigation into unscrupulous gold dealers.

Undercover reporters from a national newspaper were investigating online gold merchants alleged to be ripping off hard-up families who were selling treasured jewellery out of desperation.

They offered jewellery which they already knew was worth £220 to a number of online dealers and pawnbrokers - and were offered as little as £31.

But when they took the jewellery to John Gregson's Cheshire Gold Exchange in Stockton Heath he offered £220.50.

Mr Gregson said: "I didn't know I was dealing with an undercover reporter - I simply offered what I knew to be a fair and reasonable price for the jewellery.

"It just goes to show that you can't be too careful. It pays to deal with someone local who you can speak to face-to-face."



## Thelwall Upholstery

**FOR THE MOST COMPETITIVE RATES IN THE AREA**  
49 Knutsford Road, Grappenhall WA4 2NR  
Call Sean on: 01925 604770 or mobile: 07799 228080  
[www.upholsterywarrington.co.uk](http://www.upholsterywarrington.co.uk)

*For all your upholstery needs*

SPECIALISTS IN:

- Re-filling Cushions • Re-springing • Full Re-upholster
- Dining Furniture • Headboards

A wide range of sample books to choose from  
All at competitive rates

PHONE FOR YOUR FREE ESTIMATES



## Footpath closure

AN Appleton footpath is to be closed to the public for one week while essential resurfacing work is carried out.

Footpath No 6, from its junction with Red Lane to the Bridgewater Canal towpath at Red Lane Bridge, will be closed from Monday, March 4.

An alternative route will be signposted on site while the work is carried out.

**Copy deadline for  
the March issue is  
February 19**

**CLASSIFIEDS**

Call 0800 955 5247 to advertise

**BATHROOMS**

**The Bathroom Refurbishment Co.**

We can create the Bathroom of your dreams  
One Warrington based Company  
One Job from start to finish  
Unique 3D virtual CAD design system

Please visit our website  
[www.bathroomrefurbishment.co.uk](http://www.bathroomrefurbishment.co.uk)

Please Ring Wayne  
**01925 826 828 or 07976 574 828**

**BUILDING SERVICES**

**THELWALL BUILDING SERVICES**, brick and block work, pointing, roofing, facias, soffits, joinery, windows, doors and plastering. No job to big or small. For free quote ring Gary on 01925 266646 or 0780 8169278

**CARPET CLEANING**

**SIMPLY THE BEST CARPET CLEAN YOU WILL EVER** have. Cleaners UK Ltd. Est 22 yrs. Have your carpets & sofas beautifully deep cleaned leaving them fresh smelling & colour restored. Latest & best methods. Dry/steam. Professional, reliable & affordable. For more info call Neil Riley on 01925 264989/07831 336060 [www.cleaners-uk.net](http://www.cleaners-uk.net)

**CARPETS, CURTAINS & INTERIORS**

**CURTAINS AND VALANCES** made to measure to your own choice of fabric. Home visits to advise, measure and estimate. Free fitting. Curtain alterations also undertaken. Tel: Catherine Langley on 01925 604400. [www.catherine.makescurtains.co.uk](http://www.catherine.makescurtains.co.uk)

**CAR SALES**

**PARKVIEW CAR SALES**

We buy and sell  
**QUALITY CARS**  
Best price paid

Telephone Peter on  
**01925 575737 / 07957 545479**

23 Padgate Lane  
Padgate, Warrington  
Cheshire, WA1 3RS

**CLEANING SERVICES**

**arleys angels**

- Decluttering/re-organising
- Presenting your home for Sale
- Moving house assistance
- Spring/After building work cleans

**01925 266834**  
because you're worth it!

**DIAMOND HOME SUPPORT**

- Professional domestic cleaning
- Ironing, shopping and other duties
- Regular and one-off cleans
- Fully vetted and insured workers
- Trial clean only £7 per hour

Freephone:  
**0800 118 2538**  
[www.diamondhomesupport.com](http://www.diamondhomesupport.com)

**CLEANING SERVICES**

No time for housework?  
Fed up with cleaning? Let us help.

**Nationwide Cleaners Cheshire**

Tel: 01925 213521  
[www.nationwidecleaners.co.uk](http://www.nationwidecleaners.co.uk)

**DELIVERY SERVICES**

**FURNITURE FERRY LIGHT REMOVALS**. Collections arranged from Ikea, Costco and other stores, garden centres, auctions etc. You choose, you buy, I deliver - SIMPLE. Reliable, inexpensive service. Tel: Matt 07970 178 333 or 01942 732768. [www.furnitureferry.co.uk](http://www.furnitureferry.co.uk)

**ELECTRICAL CONTRACTORS**

**EVERGREEN ELECTRICAL CONTRACTING**. NICEIC approved contractor. For lights and sockets to rewires, fuse-box upgrades. Qualified electrician. All work is to the latest IEE wiring regulations. No job too small. Most major credit and debit cards accepted. Tel: David on 01925 724219 / 07971 407022.

**TRUST PROPERTY ELECTRICAL SERVICES**. NICEIC Part P Approved Contractor. All Electrical work undertaken. Inspection & testing & PAT testing. All work certified & guaranteed. Call Tim on 07754409906 or 01925 601055

**FIRES & FIRE SURROUNDS**

**Quality Fireplaces at Affordable Prices**

**WARRINGTON FIRE SURROUNDS**

Surround & Marble Only £299

Quality Value Service Guaranteed

**01925 417731**  
[www.warrington-fires.co.uk](http://www.warrington-fires.co.uk)  
8 Lovely Lane, Warrington  
(follow signs for hospital)

**FRENCH POLISHER**

**Rafael Meloni**. French Polisher, 25 Years experience Domestic, contract, antiques. Furniture, staircases, doors. Sand and re-finish wooden floors. Call 01925 266943 or mob 07811629738. [www.raf-frenchpolisher.co.uk](http://www.raf-frenchpolisher.co.uk)

**GARDENING SERVICES**

**DUTTONS MOWERWORLD**

Your local garden machinery specialist

SALES • SERVICE • SPARES • HIRE

Tel: 01925 740217  
The Smity, Dorebury, Warrington WA4 4AJ  
[www.duttonsmowerworld.co.uk](http://www.duttonsmowerworld.co.uk)

**LAWN AND SPORTS GROUND DRAINAGE IN ONE DAY**. No digging, no repairs. Providing for the larger grassed areas, picture and formal lawns. Contact Bob 07952 608701. 01925 266852. Vat Reg.

**GARDENING SERVICES**

**M J NEEDHAM LANDSCAPES** Award winning with over 15 years experience. All aspects of landscaping, specialist in bespoke construction. Qualified design service available. Contact 01925 764 397 or 07888 730 383

**GATES**

**Village Gates**

Manufacturers and installers of quality timber gates

[villagegates.co.uk](http://villagegates.co.uk)

For free quotes and advice call  
**01925 766629**

Office Workshop and Showroom off 10 Charnock Road, Culcheth WA3 3SH

**HOME SERVICES**

**ATLAS ENVIRONMENTAL SOLUTIONS**

PEST CONTROL CHIMNEY SWEEPING

Our prices are fixed. Only safe, legal & trusted products used. Guaranteed results, fully insured. Your friendly, local independent.

**07999 487 925 / 01925 445 222**  
[www.atlas4u.co.uk](http://www.atlas4u.co.uk)

**HYPNOTHERAPY**

**MICHAEL MAHONEY** clinical hypnotherapist for IBS, Stress, Anxiety and many other problems. Medical Research project experience, BUPA Service Provider. For FREE information sheet please email [TimelineServices@aol.com](mailto:TimelineServices@aol.com) or ring 01925 658322 [www.healthyaudio.com](http://www.healthyaudio.com)

**KITCHENS**

**QUALITY KITCHENS SUPPLIED AND FITTED** by local experienced fitters. No job too small. If you have bought a kitchen we can fit it - or we can supply and fit full kitchen units including joinery work, plastering, electrics etc. All work is guaranteed. B&L Kitchen Installations. M 07935 267200 or 01925 451883 after 6pm.

**LIMO HIRE**

**WHAT EVER YOUR OCCASION IS WE HAVE** limos available from 8 to 16 seats in various colours. If your at the planning stages for a Wedding, Hen party, Birthday or School Prom remember to include a limo for your special occasion. Visit [www.limosnorthwest.co.uk](http://www.limosnorthwest.co.uk) or Call 0800 505 3214

**PAYROLL**

**WHY TRY TO BE A PAYE EXPERT?** Watkinson Black can provide a cost effective payroll service, releasing you to concentrate on your business. For further details please phone: 01925 413210 or e-mail: [info@warringtonaccountants.co.uk](mailto:info@warringtonaccountants.co.uk)

**PRINTER CONSUMABLES**

WHEN IT RUNS OUT

POP IN AND SEE HOW MUCH MONEY YOU COULD SAVE TODAY!

5 London Road, Stockton Heath, Warrington, WA4 6SS

**01925 600633** Cartridge World

[www.stocktonheath.cartridgeworld.co.uk](http://www.stocktonheath.cartridgeworld.co.uk)

**SITUATIONS VACANT**

**SALES PERSON**

Village Life and its sister publications are looking for a self motivated person with good people skills who can work on their own and as part of a team.

The successful applicant would be able to work from home but would also be expected to spend a certain amount of time in the office

Hours are by agreement. The package offers expenses and uncapped commission

**If you feel you have the necessary qualities please email your CV to [info@warrington-worldwide.co.uk](mailto:info@warrington-worldwide.co.uk)**

**PRINTING & EMBROIDERY**

**STOCKTAKING SALE** now on. Polo Shirts from £4, T-shirts from £3. No Minimum Quantities. **Unsworths Emporium**, 31 Irwell Road, off Gainsborough Rd. Tel: 01925 638719.

**TREE & HEDGE CUTTING**

**KENYON CUTTERS**. Family business, fully insured and NPTC qualified, CSCS/ROLO assessed. Also tree and hedge supply and planting. All wood chipped or logged and recycled. Wood chip available. Contact Jayne or Steve on 01942 673910. Mobile: Ste 07973120309/Dan 07949847253

**TUITION**

**DYSLEXIA, DYSCALCULIA OR DYSPRAXIA** Impeding literacy or numeracy? Specialist tuition for children aged 6 to 14+ from highly regarded, qualified and experienced professional. Contact Jenny Stanley B.Ed, Dip.SEN, Ad.Dip.SpLD, Dip.Mus. Tel 01925 754594 or 07511 933026.

**TYRES**

**EVERGREEN Centre of Excellence**

**Express Mobile Tyres**

**01925 728811**  
[www.expresstyres.co.uk](http://www.expresstyres.co.uk)

The tyre service that comes to you at home or your place of work

Branded & Budget Tyres  
Cars, Vans, 4x4's, Light  
Commercials & Performance

**No Call Out Charge!**

**BRIDGESTONE MICHELIN**  
**GOOD YEAR Continental**

**WINDOWS & GLAZING**

**NEIL COPELAND WINDOWS & Conservatories Ltd.** Specialist in uPVC double glazing windows, doors, porches, conservatories, also fascias and guttering. FENSA registered. All work guaranteed. Tel: 01925 756138 / 07961 361550.

**SP GLAZING** for all your glazing requirements, double glazed units including failed and misted units, broke windows, mirror fixing. Kite marked to B/S. Time served glazier with over 30 years experience. For a friendly no obligation quote tel Sam Pendlebury on 01942 671859. Mob 07919 660296.

IT'S TIME TO  
CHOOSE YOUR  
PROM DRESS  
DON'T LEAVE IT  
TOO LATE!!



The  
Dress  
Studio

- Dresses of all styles: long, short & high-lo!
- For all occasions: prom, parties, races, cruises, birthdays, engagements etc!
- Free Parking
- Prom Collections now instore - over 400 styles!

Simple & Elegant



Princess Ballgowns



Sparkles & Sequins



Short Dresses



Cut-out & WOW!



Opening Hours

Tues: 9.30am - 5.30pm  
Wed: 9.30am - 5.30pm  
Thurs: 9.30am - 7.30pm  
Fri: 9.30am - 5.30pm  
Sat: 10am - 5.30pm  
Sun: 12pm - 4pm

Tel: 01925 766258

Email: [info@dress-studio.co.uk](mailto:info@dress-studio.co.uk)

Shop online at [www.dress-studio.co.uk](http://www.dress-studio.co.uk)

The Dress Studio (located next to Black Sheep Wools) - FREE PARKING!  
The Warehouse Studios, Glaziers Lane, Culcheth, Warrington, WA3 4AQ