

**Lymm**

September 2010

Issue: 138

# Life

FREE EVERY MONTH



Lymm.com

Take a look!

**Banner** & Co

Independent Residential Sales  
and Letting Agent

See our main advert  
on the back page  
for details

01925 753636

**SPECIAL OFFER**  
Free Initial Consultation



[www.gavinismydentist.com](http://www.gavinismydentist.com)

GaveLaCrew | DentalSolutions

T:01925 75 65 65

**HANDYMAN SERVICES**

**HOME, OFFICE &  
GARDEN**

*You name it we do it!!*  
No job too big or small...

Call NEIL on:

**(01925)757905**  
**07813201850**

Call today for a FREE quote

LYMMBASED



**LYMM  
PARISH  
COUNCIL**

Approved by Lymm Parish  
Council as the official  
magazine for Lymm

## Calendar boys bare all!

Page 3

**a**

COLLECT ART

29 The Cross  
Lymm  
Cheshire WA4 2BP  
Tel: 759988  
[www.collectart.co.uk](http://www.collectart.co.uk)

**Regular news updates at [www.lymmmlife.co.uk](http://www.lymmmlife.co.uk)**

# Editor's Comment



**Editor**  
Gary Skentelbery

**Production**  
Paul Walker

**Business Manager**  
Tony Record

**Advertising**  
Freephone  
0800 955 5247

**Editorial**  
01925 623630

**Email**  
info@lymm.life.co.uk

**Websites**  
www.culchethlife.com  
www.frodshamlife.co.uk  
www.lymm.life.co.uk  
www.warrington.tv  
www.warrington-worldwide.co.uk

**Address**  
New Media Centre  
Old Road Warrington  
WA4 1AT

*Lymm Life is published monthly  
by Orbit News Ltd.*

*The contents of this magazine  
are fully protected by copyright  
and nothing may be reprinted  
or reproduced without prior  
permission of the publishers.*

*The publishers are not liable for  
any statement made or opinion  
expressed by third parties in this  
publication.*

*Printed by TwentyFourSeven*

WE share the concern of local traders at the decision of the Nat West Bank to close its Lymm branch on Wednesdays and Thursdays.

No doubt the decision was made far away from Lymm, so we have no criticism of the local staff who, from all accounts, have provided customers with an excellent service and will doubtless continue to strive to do so.

We are aware of the growth of online and telephone banking and the availability of ATM facilities. But we believe banks have a greater responsibility, particularly in village communities such as Lymm, where they have always acted as a magnet to draw people into the shopping area.

The traders are worried about the impact on footfall. The bank,

apparently, is not.

Elsewhere in this issue we report on the fears of traders, the concerns of residents and the attitude of the bank. When we approached the bank - not locally, of course, but through some distant communications department - one of the issues we raised was the effect on footfall in the village.

Readers will note that the bank's response makes no mention of this - in fact it actually suggests that customers could go to the branch in Stockton Heath.

Precisely what Lymm traders fear.

Nat West is, of course, part of RBS, one of the banks rescued by the Government and revealed as running up the biggest losses of any bank in the world in a survey of the world's top 1,000 banks by The Banker magazine after suffering losses of

more than £3.5bn in 2008/09.

In fairness, it was also ranked the fourth safest after Government funding of £18bn was taken into account.

In Lymm, unfortunately, there are only three banks.

## Roof grant

LOUGHTRINGTON Community Centre has been successful in getting a grant of £42,462 from environmental group WREN towards the cost of a replacement roof for the building.

Lymm Parish Council has sent the community association congratulations.

### R + N STANHOPE

#### Coal and Log Supplies

Best Quality Coal

Smokeless Fuel

Caravan Club, Certified Location

Open 7 Days

Broomeedge Farm

Burford Lane, Lymm WA13 0SE

Tel/Fax: 752830

**Constipated? Bloating? Sluggish?**

CHESHIRE Natural Health **Colonic Hydrotherapy** can help

**"Feel Amazing"**

• Registered Nurse Practitioner • Latest State of the Art Equipment

Cheshire Natural Health, Beehive House, Tarporley Road, Siretton, Warrington  
www.colonicsforhealth.co.uk Tel: 01925 730123

## Call in the professionals!

from as little as  
**£14**  
(inc VAT)

**GreenThumb**  
LAWN TREATMENT SERVICE

**GreenThumb's professional treatments ensure your lawn looks lush, green and healthy. With prices starting from £14 per treatment, you can have a beautiful lawn for less than the cost of doing it yourself, and without the hassle!**

**Call your local branch today for a FREE lawn analysis and no obligation quote on...**

## 01925 210669

[www.greenthumb.co.uk](http://www.greenthumb.co.uk)

# Calendar boys bare all!

**A GROUP of Lymm businessmen will be wishing residents a very 'happy nude rear' in 2011 after stripping off for a charity calendar.**

The calendar boys shed their clothes at various locations throughout the village, with local celebrity Peter (Matthew) Corbett of Sooty and Sweep fame, baring all on the banks of the Bridgewater Canal!

'Calendar Boys' is the brainchild of members of the Lymm Ladies, the local branch of the National Association of Ladies Circles.

What started as a joke in a bar quickly turned into reality and now, the campaign group are hoping for as much 'exposure' as possible, as the money raised will be split between Everyman, a national

cancer charity and local Cheshire-based charities.

Headed by Catherine Sharman, Kay Hilton and shot by Cheshire photographer Sandi Hodkinson, the group wanted to do something a 'bit cheeky' and decided it was a fun and unusual way to raise money for cancer charities.

"It's also been brilliant for the community and shows that all the chaps in Lymm are game for a laugh," said Cath. "You'd think men would be shy about baring all, but we had so much interest from local businesses that we even had to turn



some people away. Who knows – this could be the launch of a modelling career for some of them!"

Among those taking part is Lymm's Town Crier Peter Powell, the Hopkinson butchers, Lymm wood-burner installer Jamie Sharman and florist Karl Welsh.

The cheeky chappies were all more than happy to do their bit for charity, but did use props or certain poses to keep the images tasteful.

While local celebrity and musician Matthew Corbett was also happy to show that he looked good naked, by posing on his boat on the canal rumour has it that even Sooty himself may be featured in the calendar!

The calendar will be launched on Tuesday September 28 at a venue in the centre of Lymm (to be decided).

Anyone wanting to order online and find out more about the calendar should visit [www.lymmcalendar.co.uk](http://www.lymmcalendar.co.uk).

The calendar will also be on sale in most of the shops appearing in the calendar for £10.



**Domestic Bliss**  
*Quality time is Bliss*  
 we are here to help with all your domestic needs  
*Need a helping hand?*  
 Buy our time, so you can have yours  
**Tel: 0161 425 7644**

**Sophies Soft Furnishings**  
**Custom made curtains, cushions, roman blinds etc**  
*Choose from our range of fabrics or supply your own*  
 For free home visit or advice ring  
**Anne on 01925 754446**  
[www.sophiessoftfurnishings.co.uk](http://www.sophiessoftfurnishings.co.uk)  
**3 Holly Bank, Cherry Lane, Lymm**

**Whites Sports Warrington Market**  
 1901 - 2001 - 100 YEARS OF EXCELLENCE  
*Specialists in:*  
 Darts, Bowls, Snooker, Air Guns, Walking Sticks, Warrington Town Merchandise, Rugby, Cricket, Football  
**GIFT VOUCHERS AVAILABLE**  
**Telephone/Fax: 01925 631531**

**Kids Planet - Beamont**  
 O'Leary Street  
 Warrington  
 Cheshire  
 WA2 7RQ  
 01925 630 879  
 Open 07:30 - 18:00

**Kids Planet - Warrington**  
 Ebenezer Chapel  
 Ebenezer Place  
 Leigh Street, Warrington  
 Cheshire WA1 1UL  
 01925 417 350  
 Open 07:00 - 19:00

**Kids Planet - Lymm**  
 29 Eagle Brow  
 Lymm  
 Cheshire  
 WA13 0NA  
 01925 759 220  
 Open 07:00 - 19:00

**Kids Planet - Widnes**  
 Kingsway Learning Centre  
 Victoria Road  
 Widnes  
 Cheshire WA8 7QY  
 0151 257 7079  
 Open 07:30 - 18:00

**Kids Planet**  
 ... A WORLD OF DIFFERENCE  
 We offer the world as seen through the eyes of a child. We give the highest standard of day care and education creating a unique home from home for our children.

- Flexible opening times
- Experienced and enthusiastic staff
- Ultra secure environment with CCTV
  - Healthy nutritious menu
- Indoor and Outdoor play areas
- Excellent Ofsted Reports

[www.kidsplanetdaynurseries.co.uk](http://www.kidsplanetdaynurseries.co.uk)

**Smart FURNISHINGS**  
 Wide Selection of Affordable Quality Furniture & Carpets

All stock carpets include FREE fitting & underlay

**PERGO**

**LIVING DINING SLEEPING FLOORING OCCASIONAL**

Leather Chesterfields studded with 'Swarovski' crystals now on display

**FREE Local Delivery • FREE parking**  
 Established family business

OPEN: Mon-Fri 9am - 5.30pm, Saturday 9am - 5pm  
**www.smartfurnishings.co.uk**

Smart Furnishings  
 Chapel Lane  
 Stockton Heath  
 Warrington WA4 6LL  
**Tel: 01925 267518**

Wid Farm • Cribbs • Brintons • PERGO and many more top names

# What's On

in Lymm  
in association with  
LYMM PARISH COUNCIL



## September 14

LYMM PARISH COUNCIL  
Lymm Parish Hall, 7.30pm

### LYMM LIONS GROUP

Meet: Bridgewater Club, Lymm  
1st and 3rd Tuesdays of the month. 8pm  
Contact: 0845 833 5729

LYMM THURSDAY EVENING BRIDGE CLUB  
Lymm Village Hall every Thursday 7pm

### MAPLE LODGE ART GROUP

Meet each Wednesday 9.30am - 12.30pm  
Maple Lodge Guide HQ, Pepper St, Lymm  
Details: 01925 755126

### ROTARY CLUB OF LYMM

Meet every Wednesday at Statham Lodge Hotel  
7.15pm for 7.45pm  
Contact the secretary 01925 755757

### LOVING HANDS

Knitting for charity at Lymm Methodist Church,  
2nd and 4th Thursday each month.  
1.30pm - 3pm. Details: 01925 823614.

### MARKET LUNCHES

Eagle Brow Methodist Church  
3rd Thursday in the month  
Light lunches 12 noon till 2pm  
All proceeds to Opening Doors Charity,  
Warrington

### LYMM SCOTTISH COUNTRY DANCE CLUB

St Mary's Church Hall  
Second and fourth Fridays (Sept - May) 7.30pm  
Details: 753853

### LYMM BAPTIST CHURCH DROP-LUNCH

Higher Lane, Mondays (during term time).  
12 noon to 1.15pm. £2.50

### LYMM JUBILEE GARDENING CLUB

Meet Third Wednesday of the month  
Lymm Baptist Church, Higher Lane. 7.30pm  
Visitors welcome. £2 includes tea and cake

### LYMM FLORAL ART GROUP

Lymm Village Hall  
Third Monday of the month  
(except August) at 7.30pm

Nonprofit making community organisations who  
would like to feature in the  
What's On Column  
should contact Lymm Life on

01925 631592

# Storm over bank's closure decision

## A STORM has broken over a bank's decision to close two days a week.

The Nat West bank at Lymm is to close on Wednesdays and Thursdays from September.

Angry traders say the bank's decision could have a serious impact on footfall in the village, as well as causing tremendous inconvenience for cash businesses and other customers.

Phil Sexton, chairman of the village traders' association said: "Nat West are basically saying to all our customers: 'We don't want you to come to Lymm on Wednesdays and Thursdays - go to Stockton Heath instead.'

Shopkeepers in Lymm have been expressing concern about the number of people shopping in the village for some years.

They fought a lengthy battle to get pay-and-display parking - a move they believe has helped arrest the decline in footfall.

But there has also been concern over road works and changes to local shops which some believe may have driven more shoppers away.

Mr Sexton said some businesses would not be too worried about the bank closing because most of their transactions were processed by card or online.

But the implications for footfall on Wednesdays and Thursday were serious.

There could also be an effect on the other days of the week when a reduced staff at the bank was already struggling to cope.

"Having to serve all their customers in almost half-the-time suggests it will be double the wait - and its not unusual to be there 15 minutes now!"

Mr Sexton is recommending his members to "vote with their feet" by switching to a bank that will support Lymm.

"I am moving my account and have been amazed at how uncompetitive Nat West have become. We will save in excess of £4,000-a-year."

He added: "I tried to reverse Nat West's decision but unfortunately they won't reconsider, so there is no alternative but to support a bank that supports Lymm."

A Nat West customer said: "I shall write to the bank but this will make no difference I am sure.

"Do banks appreciate that this is not just about closing a couple of days/ disruption to some of their 'valued' customers but may deny trade to the other businesses on those days? Do they really think beyond bonuses/profit or is this a management strategy that has been taken with no real thought for the impact it can have on local people?"

Coun Sheila Woodyatt said: "I agree with the traders that this decision could have a serious impact on footfall in the village."

A spokesman for Nat West said the Lymm branch offered only part time banking, between 10am and 3pm and that transactions had fallen over the last few years - particularly on Wednesdays and Thursdays. There would be no redundancies as a



Phil Sexton.

result.

He added: "The decision to reduce hours at Lymm branch was not taken lightly, but is a response to falling customer demand at the branch. Any customers needing to visit a branch outside the revised hours can do so at the Stockton Heath or Warrington branches. ATM facilities and a night safe remain available at the Lymm branch outside the revised hours. Customers also have 24-hour access to our telephone and online banking services."



**General Building  
Extensions  
Alterations**

Woodbine Road, Lymm  
**Tel/Fax: 01925 756265  
Mob: 07810 710210**  
info@landbuildersltd.co.uk  
www.landbuildersltd.co.uk



**DUNHAM MASSEY FARM  
Ice Cream**

Ash Farm,  
Station Road, Dunham Massey,  
Altrincham, Cheshire

**0161 928 1230**

A small family run business  
Ample Car Parking  
Enclosed Garden - Safe for Children  
Open 7 days: 12 midday till 6pm

*Come for a cone or take a tub home!*

23 Flavours of  
Homemade Luxury  
Ice Cream

Cheese and Butter  
Local Preserves  
Ice Cold Drinks  
Available



## Soccer club seeks new talent

MEMBERS of Lymm Football Club have started pre-season training in readiness for another campaign in the Lancashire Amateur League - and are looking for new talent.

The club - successors to the former Lymm Old Boys - field three teams, including a Veterans' side - and are training at Sandy Lane.

Anyone aged 16-plus interested in joining should call James Slavin on 07737 655211 or Gary Caldwell on 07710 287041.

## C.C. Electrical Contractors

### Domestic & Commercial

All electrical work undertaken • Part P registered  
Re-wires • Extra electrical points • Upgrades  
Intruder alarms • CCTV • Recreational / Security lighting  
Electric gates • PAT testing • Landlord checks  
Electrical testing / Certification • Home entertainment  
Work insured and guaranteed

**For a FREE QUOTE call  
07812 365075**



## The Complete Kitchen & Bathroom Service

# Village Designs

We design and install all types of kitchens and bathrooms. Our comprehensive service includes all trades:

Lighting • Tiling • Flooring • Decorating etc

**One local company from start to finish**

Visit: [www.villagedesigns.co.uk](http://www.villagedesigns.co.uk) or  
Ring Jeremy on 07810 421243

# Welcome to a proper bank



At Handelsbanken relationship banking still lives up to its name. With all key decisions made locally by us at the branch we are able to offer a highly personal banking service that is designed to meet your individual requirements.

We provide all the main services that high street banks provide, from day-to-day transactional banking, to the more sophisticated needs of the modern business. Our Individual Banking service is designed for high net worth customers who need a bespoke

offering with easy access to their manager. Putting the needs of the customer ahead of all else lies at the heart of everything we do. We tailor our current accounts, mortgages and loans to your individual requirements.

Chris Clarke  
Karen McComb

Corporate Account Manager - Tel: 01925 575706  
Individual Banking Manager - Tel: 01925 575708

1st Floor, 760 Mandarin Court  
Centre Park, Warrington, WA1 1GG  
[www.handelsbanken.co.uk/warrington](http://www.handelsbanken.co.uk/warrington)

## Handelsbanken

# Complete Petcare

- Routine Vaccinations
- Routine Spay and Castrations
- Medical Consultations
- Dentals
- 24 hour Emergency Cover
- Home Visits
- Routine Surgery
- Emergency procedures
- Dedicated Puppy Nurse
- Free Weight Checks
- Free Senior Pet Checks



Having recently undergone a full refurbishment the surgery boasts

- Separate Kennels for Cats & Dogs
- Dental Suite
- Large Consulting Room
- Separate Preparation Room & Dedicated Operating Room



**LYMM VETERINARY SURGERY**

[www.willowvetgroup.co.uk](http://www.willowvetgroup.co.uk)

10 Booths Hill Road  
Lymm WA13 0DL

Telephone  
01925 752721

Advertisement

## Is your pet drinking too much?

We all know that moderate drinking does you no harm and can even have health benefits but when drinking becomes excessive then there is usually a problem that needs sorting out.

The same applies to pets. A 20kg dog needs to take in about a litre of fluids over a 24 hr period (fluid intake is calculated according to your pet's weight). This fluid intake doesn't necessarily have to be in the form of drinking water, most wet pet foods have a high moisture content anyway so you'll probably note that your pet will drink a bit less than the calculated amount. The problem arises when your pet starts drinking excessively (i.e. more than the calculated amount over a 24 hr period). You may also notice that because of your pet's increased fluid intake, they may want to go to the toilet more than usual.

There are many underlying factors which may cause your pet to drink more. The most common cause is kidney problems. The kidneys are responsible for regulating the fluid balance in the body so, if the kidneys are sick, this balance goes out of control.

Another disease that can cause an increase in thirst is diabetes. This condition is fairly common in cats and dogs of all ages and can also be accompanied by excessive tiredness and changes in weight.

Problems with your pet's liver can also increase an animal's thirst, as can an infected uterus in bitches that are not neutered. There are numerous other diseases which can affect your animal's fluid intake but the bottom line is, all of the conditions mentioned are detectable with blood tests that can be carried out by us at Lymm Veterinary Surgery.

So, if you notice that your pet is drinking excessively, bring them down to the vets as soon as you can and we'll try to get to the bottom of the problem before the condition gets too serious!

**Bramble Lodge Day Nursery**  
Birth – 5 years  
Good quality childcare and education in a homely environment.  
Next to Lymm High School  
[www.bramblelodge.co.uk](http://www.bramblelodge.co.uk)  
01925 757597  
36 Oughtrington Lane • Lymm

**BYTEWYSE COMPUTERS LTD**  
THE SMARTEST CHOICE FOR SYSTEMS & SUPPORT

- Custom built PCs to meet all requirements
- Full Windows 7 supply and support
- Free home delivery and installation with up to 24 months warranty
- PC repairs and maintenance
- Remote Access Support
- Networking and PC support contracts for small or home businesses
- Call us now on 01925 759658

[www.bytewysecomputers.com](http://www.bytewysecomputers.com)

58, PADDOCK VIEW, LASKEY LANE, THELWALL, WARRINGTON, WA4 2TF

## Abbey Leys Farm Shop

*Fresh Farm Food at its Best!*

Organic Free Range Eggs • Goose and Duck Eggs • Pickled Eggs  
Home Grown Potatoes • Fresh Fruit and Vegetables  
Farmhouse Cheshire Cheese • Butter • Fresh Milk  
Farmhouse Ice Cream and Lemon Cheese

Opening Times: 9.00am - 5.30pm Mon - Sat. Sun 10.00am - 4.00pm

**ABBEY LEYS FARMERS' MARKET**  
First Sunday each month 10am - 2pm

**Tim & Janet Harrison**  
**753465**

Peacock Lane, High Legh



## Thelwall Upholstery

**FOR THE MOST COMPETITIVE RATES IN THE AREA**

49 Knutsford Road, Grappenhall WA4 2NR

Tel: 01925 604770

*For all your upholstery needs*

**SPECIALISTS IN:**

- Re-filling Cushions • Re-springing • Full Re-upholster
- Dining Furniture • Headboards

A wide range of sample books to choose from  
All at competitive rates

PHONE FOR YOUR FREE ESTIMATES



# Graduation party

It was a Graduation Party with a difference. Four-year-olds at the Bramble Lodge Day Nursery, Lymm were treated to a special party to celebrate their move up to primary school this month. Clancy Clown was on hand to provide entertainment and there were lots of other attractions to make sure the youngsters left with happy memories of their nursery days.



**oven**  
oven valeting service

ovenu.co.uk

...punctuality, pride, courtesy...

- Range & Aga Specialists
- Ovens & Hobs
- Extractor Hoods
- Microwave Ovens
- Traditional Stoves

LET US HELP - PHONE NOW  
01925 453377

the UK's favourite oven cleaning specialists

**Odd,** but not everyone knows we do horse and horsebox insurance

We do.

Call 01928 735967 for a quote or pop into the office to talk to Katie or Leanne at NFU Mutual Office, 123 Main Street, Frodsham WA6 7AF

Agent of The National Farmers Union Mutual Insurance Society Limited. We do right by you.

## Cotebrook House

### Musical Extravaganza

Event to be held on Sunday 5th September 2010 at 2.30 pm

Featuring The Manchester Reed Trio plus other artists.

Bring a picnic and enjoy our beautiful grounds

Admission £5. Children under 12 half price. (proceeds for charity)

Please phone or call in for tickets

Opposite Lymm High School  
Oughtrington Lane, Lymm WA13 0QY Tel: 01925 752583

# have you heard?

WE NOW OFFER HEARING TESTS

Using the latest technology available to help give you the best possible solution, with a discreet and welcoming approach.

**PENSIONERS' Discounts available**

we are here to listen to you...

to book your next appointment call:

**adcott hearing** 01925 757075

14a The Cross, Lymm, Cheshire WA13 9HP  
mail: hearing@adcott.net  
web: http://hearing.adcott.net

## Rosebank Naturegarten, Pepper St, Lymm

a dream come true for you and your child.

- Home from home
- Extensive grounds
- Outside learning days
- Early Years/flexible sessions
- Full Day Care
- Children from 2 1/2 years

Did you always want to build dens, explore, do woodwork and gardening?  
...make sure your child has a head start and a childhood to sing about with a setting that gives them real space to develop, learn and play.

Our new Scandinavian Log Cabin is the natural choice for your child with its custom design and outside areas. Most of all we really do cater for children's individual needs with all play being led or directed by qualified teachers. *'The diverse curriculum offers opportunities for children to develop their skills and find their strengths' (OFSTED)*

**Up to 15 hours per week may be FREE using Early Education Grants for 3 and 4 year olds.**

We can also take babies and toddlers at The Rosebank Centre, our other Pepper Street nursery, which focuses on their specific needs.

Phone Sadie Hopley on 758959 to come and explore

# Last chance to have your say

LYMM residents still have a chance to have their say on the future of the community and youth facilities based at Lymm Youth Club.

Over the past couple of months, Lymm Youth and Community Association have been conducting a survey about our community and youth facilities.

They will be publishing the full results in the next month, so this is the last chance for residents to have their say.

There has been a fantastic

response so far and the committee would like to thank everyone for their time and support. Almost everyone surveyed would like to see community facilities improved or maintained in the village and with over 85% of people surveyed agreeing that Lymm would benefit from a revitalised youth club, it is clear there is a demand for the centre. Over 80% of people think it would be a mistake if the site, along with the neighbouring car parks, was sold for redevelopment. There have been some great suggestions for improvements or new activities and facilities that could be offered at the centre, which the committee hope to act upon. It seems that many people are keen to get involved with their community or are interested in new activities at the centre, so we are calling upon you to make it happen. Lymm Youth & Community Association is always looking for people who would like to help out at the centre, in whatever capacity.

For more information, visit [www.lymmca.org.uk/support-us/](http://www.lymmca.org.uk/support-us/) or please contact the secretary, Neville Davies on 01925 755757.

If you would like to add your voice to the results, then you don't have long left to complete the survey.

Copies are available at Lymm Youth & Community Centre and a number of local businesses.

Alternatively, complete the survey online at [www.lymmca.org.uk/survey](http://www.lymmca.org.uk/survey)

## Megan is crowned queen



LYMM High school pupil Megan Roylance was crowned Thelwall Rose Queen 2010 following the annual parade in the village.

Megan is pictured on her float.

## LYMM GARDEN CARE EST 1990

**LAWN MOWING - Weekly / Fortnightly**

*Excellent mowers used*

**All aspects of gardening including:**

**Hedge Cutting, Tree Pruning, Lopping and Felling  
Lawn Feeds / Fertilisers**

Competitive Prices, call Greg Clarke on

**01925 757069**

## BROTHERSTON

*I Fix Problems!*

Electrical - Plumbing - Audio Visual - Joinery

Bathroom Problems - Kitchen Problems

Call Steven Brotherston on

**07818 636 112**

Email: [steve@ston.co.uk](mailto:steve@ston.co.uk)



**Deadline for the October issue of Lymm Life is September 7**

## JOHN PERCIVAL

BUILDER, EXTENSIONS & INDUSTRIAL WORK

- Experienced in all areas of building work from repairs, alterations, renovations and extensions
- Specialist advice and immediate estimates
- Accurate time schedules
- Registered with the federation of Master Builders from 1973 and listed on the Police Platinum Members Guide
- Guaranteed professional, quality work from a well established, reliable building company



Tel/Fax: 01925 755984

Mobile: 07831 239612

8 Oughtrington View, Lymm, Cheshire

Web: [www.johnpercival.co.uk](http://www.johnpercival.co.uk) Email: [john@johnpercival.co.uk](mailto:john@johnpercival.co.uk)

## carpe diem

WEB DESIGN, DEVELOPMENT & PRINT

Delivering creative web and print solutions since 1999, Carpe Diem have developed strong working relationships with clients of all sizes.

UKTV, ASICS, Onitsuka Tiger, Transform Medical Group, Otelo, The Energy Ombudsman, Halle Orchestra, URBS

T: 01925 299 842

F: 0871 434 5371

E: [info@cd-inc.co.uk](mailto:info@cd-inc.co.uk)

[www.carpe-diem.co.uk](http://www.carpe-diem.co.uk)

60 High Street

Newton-Le-Willows

WA12 9SH

Website Development

E-Commerce

Branding

Print

SEO / PPC / Marketing

SMS / MMS / Email Campaigns

Hosting

DVD / Video Production

Product Photography

## B.A.S.

Bespoke Architectural Structures Ltd

Transform your living space or work place with specialist glazing made to the highest standard. Family based business manufacturing, supplying and installing glazing systems to the domestic and commercial market specialising in sliding folding doors: Call us now for a **FREE no obligation quotation.**

**Best quality and service assured!**



[www.b-a-s.co.uk](http://www.b-a-s.co.uk)

Tel: 01928 579957

Unit 3, Sycamore Court, Manor Park, Runcorn. WA7 1RS



### P.E.T.S. ANIMAL HOTEL

Setting New Standards in Animal Care

- Hotel style living for your pets
- State of the art grooming salon
- Behaviour and training management
- Reliable dog walking and home care visits
- Unique, purpose-built indoor and outdoor Doggy Day Creche
- Pick up and delivery service

Viewings welcome

To arrange a tour please ring Fran Jennings on  
**07792 756 545 or 01925 750418**

27 Burford Lane, Lymm, Cheshire WA13 0SH  
[www.petsanimalhotel.co.uk](http://www.petsanimalhotel.co.uk)



With an increase in sales, we currently have clients waiting to purchase. Ridgeway Residential is the right choice to sell your property quickly and efficiently.

**Urgently Required Properties For Sale. Please call for a Free Market Appraisal Today**

**FOR SALE**

**FOR SALE**



**NEW INSTRUCTION**

**1 Longcroft Place, Lymm**

A well presented modern detached property standing on a corner plot of Heatley Mere development. Briefly comp lounge, garden, dining kitchen, utility, downstairs W/C, 5 bedrooms, 3 bathrooms, good sized garden, garage and off road parking for 3 cars. No Chain. Viewing Recommended.

**£439,950**



**REDUCED**

**24 Manor Road, Lymm**

Well presented, Extended Semi Detached property, short walk from Lymm Village. The property briefly comprises of porch, large lounge, dining kitchen, utility, conservatory, 3 large bedrooms, 2 bathrooms, UPVC double glazed, garage, gardens front and rear. Must be viewed.

**£399,500**



**NEW INSTRUCTION**

**24 Huntsfield Close, Lymm**

This 4 bedroom end mews within walking distance of Lymm village, briefly comprises of four bedrooms, two bathrooms, lounge/dining room, large family room, breakfast kitchen with balcony, utility, enclosed garden to the rear, off road parking. Viewing Recommended.

**£299,950**



**NEW INSTRUCTION**

**1 Orchard Road, Lymm**

A fully refurbished end terraced situated in a sought after location. Comprises of entrance hall, lounge, dining kitchen, 3 beds, 2 baths (family bath and en-suite), double glazing, landscaped good-sized front garden, off road parking. Detached garage that can be purchased separately.

**£225,000**



**VIEWING RECOMMENDED**

**2 Woodbine Road, Lymm**

Attractive end modern mews in popular location comprising of entrance hall, large lounge, breakfast kitchen with door leading into the garden, two double bedrooms, two bathrooms, gas central heating, enclosed garden, garage and parking. Viewing recommended..

**£194,950**



**NEW INSTRUCTION**

**38a Grove Avenue, Lymm**

Modern semi detached property within a short walk of Lymm village. The property briefly comprises of entrance hall, downstairs W/C, good-sized living/dining room, fitted kitchen, 3 bedrooms, family bathroom and en-suite shower room, gardens to the front and rear. Viewing Recommended

**£189,950**



**NEW INSTRUCTION**

**10a Reddish Lane, Lymm**

A delightful well presented semi detached property in a quite sought after location. The property comprises of a spacious lounge, fully fitted kitchen, two bedrooms, bathroom, parking, rear garden and gas central heating. Viewing Recommended.

**£184,950**



**50% SHARED OWNERSHIP**

**47 White Clover Square, Lymm**

Well presented modern mews property for sale as a 50% ownership with a rent of £235pcm. Entrance hall, living/dining room, fully fitted kitchen, downstairs W/C, 2 double bedrooms, family bathroom, south facing rear garden, allocated parking.

**£99,950**

**TO LET**

**Trimble House, 9 Bold Street, Warrington**

Spacious commercial premises, kitchen & bathroom facilities, 248 Square Metres.

**£1000pcm**

**7 Bucklow Gardens, Lymm**

3 bed modern mews, unfurnished, available 27/08/10

**£750pcm**

**9 Buckingham Drive, Knutsford**

2 bed semi-detached, furnished, available immediately

**£750pcm**

**6 Waterbridge Court, Lymm**

2 bed flat, furnished, available 09/08/10

**£495pcm**

**TO LET**

**Due to the high demand in Rentals we require To Let properties in all prices. Call today, we offer competitive fees!**

19 The Cross Lymm Cheshire WA13 0HR T. 01925 756931 E. sales@ridgewayresidential.co.uk

# Students map out graveyard

STUDENTS from Dunham Hall - one of the five halls within Lymm High School - have presented a catalogue of all graves in the graveyard at St Peter's Church, Oughtrington to the vicar, the Rev Michael Burgess.

It has been completed over a period of some two years and will help people find the graves of relatives - including those dating from past centuries.

St Peter's is the link church for Dunham Hall and Father Michael is Dunham Hall's local member of clergy.

Some two years he approved Neil Hodgson, head of Dunham Hall, and asked if students would be interested in helping him identify and catalogue the graves in the graveyard.

Many are very old, some inscriptions are very difficult to read and the location of some is also uncertain.

This makes it difficult for people looking for the graves of relatives - particularly old ones they might be seeking in researching family trees, etc.



Picture shows (left to right) Maureen Stebbings, Rev Michael Burgess, Jack Croft, Jeremy Russ and Ben Evans-Clarke. Other students involved in the project were Maeve Walkington and Josh Monks.

Students worked with Maureen Stebbings, a member of staff within Dunham Hall, to clearly identify the graves.

They then presented a catalogue to Father Michael, including print-outs of locations together with names and dates of deceased.

They also gave him a spreadsheet version so he can easily keep it up-to-date from now on.

Mr Hodgson said: "It is a great example of our youngsters contributing positively to the local community. They gave up their own time at lunch-times and Mrs Stebbings worked hard in her own time to co-ordinate the project.

"Dunham Hall is very proud to have been able to help the local church in this way."

# Emily's a real all-rounder



A LYMM girl is back home after representing England in an international handball tournament in Sweden.

All-round sportswoman Emily Maddison, a pupil at Lymm High School, had previously represented Cheshire at hockey and netball and holds the national shotput record for under 16 girls in the Air Training Corps.

Emily played handball for Warrington, and as a result of her performances, was invited to play for Cheshire. Next, she was invited for England handball trials and won a place in the squad The tournament involved 19,000 youngsters aged 8-18. The England team won one of their games 10-4, against a Danish team. When the team returned home they defeated Ireland 15-9.

# Good, bad and ugly scarecrows!

DOZENS of people entered into the fun of Lymm Festival's annual Scarecrow Competition which this year had the theme of 'The Good, Bad and the Ugly'.

Judges had a difficult decision to choose winners as standards were very high. They chose Gollum for the Gold First Prize, which was made by the Mundy family of Highfield Road.

A competition spokesperson said: "This fantastic interpretation of the good, bad and ugly character Gollum from Lord of the Rings is overlooked by the all seeing eye as he is about to eat his supper!"

The scarecrow is made from papier-mâché on a wire frame, then painted and varnished. It was very popular with festival visitors.

The Silver Second Prize went to Hiccup Horrendous Haddock III made by the Leigh Family of Manor Road.

The spokesperson added: "A huge amount of enthusiasm has gone into the superb creation of these



Gold Prize Winner 2010 - Gollum (6) made by the Mundy Family.

characters from the How to Train Your Dragon series of books by Cressida Cowell.

"The Viking Hiccup and his dragon Toothless are the heroes, the sea dragon in the hedge is Green Death the baddie and Hiccup's archenemy is Alvin the Treacherous, who is pretty ugly as he has lost several parts of his anatomy in the adventures - so far he has lost a hand, a leg, all his hair, an eye and his nose! In fact, another baddie - non-fiction this time - made sure that Alvin lost his whole head on the night of the Food Fest!"

During the festival there was also a Scarecrow Trail Quiz where people had to guess the scarecrow titles. Prize Winners were Chloë Ellerton-Raines and Matthew George.



Silver Prize Winner 2010 - Hiccup Horrendous Haddock III (22) made by the Leigh Family.



Left to right, back: Lorraine Sinclair, Sharron Cranston, Kim Schmider; front: Jannette Harris, Jo Murphy, Rosemary Voisey.

# Lymm's tennis triumph

LYMM Tennis Club has had an outstanding season in the Warrington Tennis League.

The women's 1st team has won the division one title - and won praise from club captain Jannette Harris.

She said: "As I have always said, I view us as one big squad - so without the extra players who played when needed it wouldn't have been possible!"

"A big thank you to Jo Murphy who has been an awesome captain."

Meanwhile the Lymm Men's team also won the Warrington League title and, in addition, division two of the North East Cheshire League, gaining promotion to division one.



Left to right, back: N. Gwilliam, J. Fairbotham, A. Newell, front: G. Benger, R. Grasby (capt), T. Schmider. Also in squad M. Austin, M. Ward, P. Wilkinson, R. Longworth, C. Clarke and C. Thornley.



# REAL EARTH



NATURAL STONE TILES

•  
WOOD FLOORING

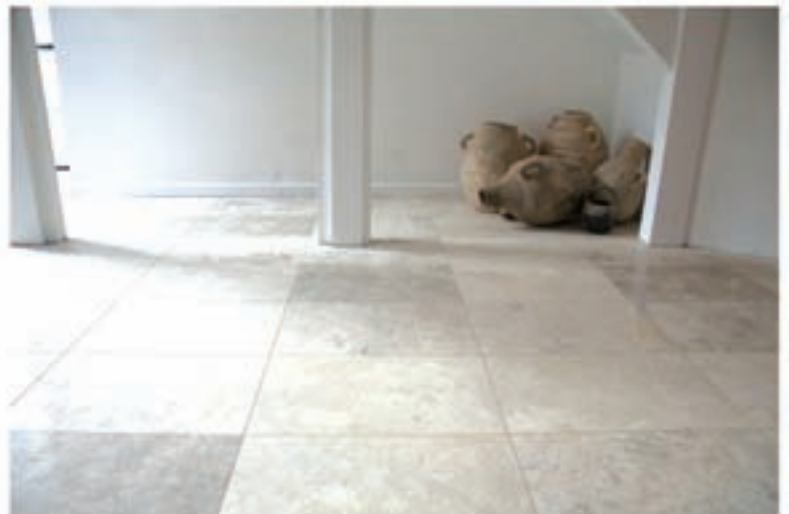
•  
BATHROOM SUITES

•  
UNDERFLOOR HEATING

•  
FITTING SERVICE AVAILABLE

•  
**ALL AT TRADE PRICES**

**NEW LIFESTYLE ROOM  
SETS NOW ON DISPLAY**



Lymm Nursery • Rushgreen Road • Lymm • Cheshire • WA13 9PR  
T: 01925 759 607 • F: 01925 758 699 • E: [info@realearthuk.com](mailto:info@realearthuk.com)

# Students exhibit for first time



**TWO art students from Lymm exhibited for the first time after completing their Foundation Studies Diploma at Trafford College.**

Both are now to go on to university for degree courses - mature student Jacqueline Clarke to Manchester Metropolitan University and Victoria Morton to Oxford Brooks University.

They both live in Lymm and their work has been related to and inspired by the village in different ways.

Jacqueline's work has been a total celebration of Lymm village and life in terms of the place, people and character/identity explored through a wide variety of creative media and culminating in textile-based pieces of

art work.

Jacqueline has completed a full time course as a mature student, wife and mother of two.

She has studied at Trafford College before - completing a beauty therapy course in her 20s.

Victoria's work used a number of

architectural influences in and around Lymm to stimulate her work which is sculptural and inspired by the contrast and interest when old and new architecture comes together.

Course leader Ian Read said: "Jacqueline and Victoria represent a new generation of designers and creative practitioners.

"Their work attracted a lot of attention at the exhibition."

## School's gold award for art

(A LYMM school has been awarded Artsmark Gold to mark its excellence in arts education.

Cherry Tree Primary School received the award from the Arts Council England.

Headteacher Mrs Helen Hall said: "I am delighted that the Arts Council has recognised the school's dynamic arts education programme.

"Artsmark is more than simply a mark of distinction to us. Taking part in the scheme has enabled us to develop our arts provision and see the students who take part become more self-confident, engaged and excited about learning."

Pupils from the school have enjoyed jazz, gospel and brass band music lessons with Warrington Music Service and taking part in the Primary Arts Network exhibiting at the Pyramid in Warrington.



Cards by  
Samantha

Opening  
Saturday  
4th September

Craft Store & Hand Made Wedding Stationery Boutique

### Card Making Classes

We have a class for you! Beginners/intermediate/advanced classes now booking. **Places are limited so book early to avoid disappointment.**  
10% discount off any shop purchase following your class.

### Wedding Stationery

We also offer an extensive range of handmade wedding stationery, with designs to suit every stylish wedding.  
10% off any order placed following a consultation - book yours now!

For further information on all the above:  
Tel: 01925 212449 Email: sam@cardsbysamantha.co.uk  
2 Barley Road, Thelwall, Warrington, WA4 2EZ

Saturday 28 August 10am - 4pm

## Armed Services Day

Throughout Warrington  
Town Centre

The Army, Navy and Airforce take over the town for a day of exhibitions, displays and entertainment.



IN SUPPORT OF  
**HELP for  
HEROES**

Warrington  
Warrington Council

## Pupils travelled in style!



Two Lymm youngsters travelled in style to their end of year School Prom - by helicopter!

Lymm High School pupils, Ella Corrigan and Charles Butcher, both aged 16 are pictured getting on the helicopter to go to their prom at the Park Royal hotel.

# REGENCY ROAD PULLMAN TOURING COMPANY

Regency House, 83 Manchester Road, Northwich, Cheshire CW9 5ND  
Tel: 01606 42233 (Sarah, the daughter of Clive)

## HOLIDAYS AT A GLANCE FOR 2010

### German Christmas Markets

P&O cruise from Hull  
Dinner & breakfast on board  
Coach travel, meals on the coach. 5 markets to visit in Koln. Train ride to Bonn for Christmas market. Hostess service, fabulous hotel five minutes from cathedral. Dinner, bed & breakfast. Real value for money. Sun 28th November - 6 days

**£658**

### Christmas in Germany

Staying at the Carot Hotel, Monshau. Once again, for our 7 day Christmas tour. A fully inclusive tour with visits and so much more to see and do. P&O cruise from Hull, coach travel, dinner bed & breakfast Wed 22nd December 7 days

**£635**

### Christmas in England

A fully inclusive tour to the Livermead Cliff Hotel, Torquay. Fantastic cuisine, entertainment, special Christmas tour out on the coach. A truly Christmas to remember Wed 23rd December 5 days

**£574**

### Scotland in Miniature

15th August  
6 days  
**£498**

### Spectacular Scotland by Steam & Rail

26th August  
6 days  
**£499**

### Royal Windsor and the Thames

30th August  
4 days  
**£288**

### Historic Warwickshire

5th September  
5 days  
**£369**

### Wonderous Wicklow Mountains

6th September  
5 days  
**£391**

### The Idyllic Isle of Wight Sandown

11th September  
8 days  
**£502**

### A Country House in The Cotswolds

18th September  
5 days  
**£331**

### Blechley Park Experience

20th September  
5 days  
**£389**

### Pretty Pembrokeshire

24th September  
5 days  
**£399**

### Cornish Coast Delights

30th September  
5 days  
**£348**

### Perthshire Loch Tay

5th October  
5 days  
**£369**

### Autumn Colours in the Scottish Borders

11th October  
4 days  
**£291**

### Charming Sidmouth

19th October  
5 days  
**£389**

### Titanic Trail County Cork

24th October  
6 days  
**£408**

### Winter Mystery Tour

8th November  
5 days  
**£344**

## TOURS WITH A CHRISTMAS FLAVOUR

### Turkey & Tinsel

at The Royal Hotel, Scarborough  
Dinner, bed & breakfast  
Christmas fare each day  
Steam train ride, 4 days out & about  
Mon 15th November - 5 days

**£333**

### 1940's Street Party

at The Imperial Hotel, Blackpool  
Dinner, bed & breakfast  
1940's night, 1940's days  
4 days out & about  
Mon 22nd November - 5 days

**£296**

### Christmas in York

at The Hilton Hotel  
Wed 24th November - 3 days

**£249**

### Medieval Christmas Party

at Ludlow Three Counties Hotel, Hereford. Special medieval day at Ludlow Castle. Sat 27th Nov - 2 days

**£149**

### Castles at Christmas

Staying at the Holiday Inn, Maidstone. Visit both Hever & Leeds Castle in true Christmas style, so much more. Sat 4th December 3 days

**£219**

### Christmas Carols

in the Royal Albert Hall, London  
Tour includes: carol concert, duck tour on the Thames, tour of London, staying at the Hilton Hotel Paddington, Dinner, bed & breakfast  
Fri 10th December - 4 days

**£305**

### Thursford Spectacular

Christmas show. Words cannot describe this outstanding venue. Plus fabulous hotel dinner, bed & breakfast, meals on coach included  
Tues 14th December - 4 days

**£334**

### New Year in the Isle of Wight

Staying at the Trouville Hotel, Sandown.  
5 full days of special hospitality  
Wed 29th December - 5 days

**£429**

**Phone Now  
for Full Details of  
any of these Value  
for Money Holidays  
Call: 01606 42233**

## EARLY BOOKINGS FOR 2011

Strictly Come Dancing Live Tour, London - 23rd January - 2 Days - £184  
Perthshire in the Winter - 14th February - 5 Days - £281  
Murder Mystery at The Lion, Criccieth - 18th February - 4 Days - £214  
Delightful Days at The Suncliffe, Bournemouth - 7th March - 5 Days - £TBA

# Twin Town debutants en

**NEARLY 60 'Twin Towners' returned 'en masse' from the bi-annual visit to Meung-sur-Loire, the small village near Orleans that Lymm has been twinned with for over 40 years.**

The visit by both long-term and recent new members was hailed a wonderful success on both sides of the Channel. Friendships spanning decades were reinforced and new links were forged between young families new to the society.

The visit combined fantastic weather, outstanding hospitality, a well organised itinerary in the Loire Valley involving vineyards, wine cellars, restaurants, chateaux and

parks; and culminated with an official reception lunch and entertainment.

Membership of the society is on the increase following various initiatives to promote its benefits to young and mature members alike. Two new families who recently joined the society recounted fantastic experiences during their Meung visit this year.

Twin Town 'debutants', the Unsworth family, were very excited

but apprehensive about joining the exchange visit to Meung with two young children (aged 2 and 5). However, it exceeded all their expectations. Commenting on their experience they said: "Meung was truly a lovely place - not only picturesque but the people we met there were warm and friendly too. We were so well received by French and Lymm Twin Town Society members alike and were overwhelmed by how much effort was put into the welcome, official visit and formal lunch; and as for our host family...they were just fantastic. "We couldn't recommend enough

to any potential new young family members what a fabulous trip it was and would urge them to join the society. Our 5 year old loved the experience and I'm sure it has provided her with a fantastic learning and cultural experience."

The Lynas family, who also made their debut visit to Meung this year, went so far as to say that joining the Lymm-Meung Twin Town Society had been one of the best decisions they have made in years, 'reigniting their passion for France and helping them make many new friends both in the Lymm area and in Meung-sur-Loire'.

The Society looks forward to welcoming its French counterparts to Lymm next June and plans are already underway to make the 3-day return leg an impressive and fun event.

Meanwhile it was yet another successful annual summer BBQ for Lymm's Twin Town Society.

The sun shone down on Moss Brow Farm in Warburton owned by members Richard and Karen Clegg as an astounding 198 people were welcomed into superb grounds to enjoy a plentiful BBQ spread, an afternoon full of fun for the kids and relaxation for parents as they looked upon a field of kids games, obstacle races and a rather competitive Dad's 'Tir à la Corde' (Tug of War).

Since their Noel Arrive Christmas event, the society has been working hard to extend the profile of its membership by organising events appealing to young families including



The table at the official reception for the Lymm party.



**TCS**  
Tabley Computer Services  
Understanding the needs of office, home and business users

- ◆ Let us fix your computer problems
- ◆ We come to you, no call out charges
- ◆ No fix, no fee

Tel: 01565 650949  
Mobile: 07909 821416  
Email: gordon@tableycomputers.com  
Web: www.tableycomputers.com



# ZUMBA®

## fitness

**Coming to Lymm Leisure Centre in September**

ZUMBA is a Latin inspired dance fitness programme designed to burn loads of calories, you don't even realise you're exercising

**Ditch the workout, join the party!**

Contact: Melanie Jones on 07812575081  
www.take2fitness.co.uk take-2@tiscali.co.uk

## The Cross Clinic

**LYMM Centre TEL: 01925-757513**

Acupuncture – Aromatherapy – Reflexology – Physiotherapy – Osteopathy  
Chiroprody – Bowen Therapy – Hypnotherapy – Dizziness Rehab – Reiki  
Lymphatic Drainage Massage – Counselling – Nutritional Therapy

### Compare our fees

|               |      |              |     |
|---------------|------|--------------|-----|
| Acupuncture   | £30  | Hypnotherapy | £28 |
| Physiotherapy | £30* | Head Massage | £28 |
| Reflexology   | £32  | Counselling  | £30 |
| Chiroprody    | £25  | Bowen        | £35 |
| Aromatherapy  | £28  | Osteopathy   | £38 |

\* indicates slight variations between different practitioners

## ARCHES

SHOES, BAGS & ACCESSORIES

### SUMMER SALE

FINAL REDUCTIONS

Huge selection of shoes & bags plus  
**Gorgeous Ladies Fashion**




01925 751977

18 Eagle Brow, Lymm  
www.archesshoesbags.co.uk

# joy exchange visit

a Treasure Hunt, a French evening at a local French restaurant and the summer BBQ.

Kirsty James, membership coordinator, who has been involved with the society since being a young

child herself and who now participates with her own young family, has been leading the recent drive for new membership by organising several new events appealing to families with young

children. She said: "The turnout and support exceeded all expectations. The weather was glorious, children were happy, and there's no doubt that we have raised awareness about this long-standing society and given ourselves a great chance at welcoming new young members interested in French language and culture."

With further social events planned this year to include two further French evenings (Sept and Nov), a Beaujolais Nouveau evening (18 Nov) and Noel Arrive (19 Dec), the society seems set to be undergoing a veritable renaissance.

For more details about the society, membership and events, contact [lymmtwintownsociety@btinternet.com](mailto:lymmtwintownsociety@btinternet.com) or visit [www.lymmtwintownsociety.co.uk](http://www.lymmtwintownsociety.co.uk)



Twin Town Society summer barbecue at Warburton.



Members of the society on an outing in the Loire Valley.

## Police to patrol park

POLICE have been asked to patrol Lymm's Ridgway Grundy Park after 9.30pm.

The request was made by chairman Coun Pam Hunter at a meeting of the Parish Council

Coun Bob Barr also told the meeting he had received complaints from parents about high school pupils monopolising play equipment in the park which was intended for younger children.

**Curious,** but not all insurers provide specialist home insurance for high value homes and lifestyles.

**We do.**

Call 01928 735967 for a quote or pop into the office to talk to Katie or Leanne at NFU Mutual Office, 123 Main Street, Frodsham WA6 7AF.



Agent of The National Farmers Union Mutual Insurance Society Limited.

We do right by you

## Dunham Window Cleaners

See the world through Dunham clean windows

Local professional window cleaners with over 20 years experience

**Services also provided:**

- Reach & Wash system for those hard to reach areas
- PVC • Roof • Conservatories
- Gutters all cleaned
- Outside of properties cleaned
- Driveways/Patios Jet Washed
- Wheelie Bins Cleaned
- Domestic Cleaning
- House Clearances

Jet washing service also available

Call 01925 752159 or Steven on 07874 118219 Glynn on 07723 507840

E: [dunhamwindows@hotmail.co.uk](mailto:dunhamwindows@hotmail.co.uk)  
[www.dunhamwindows.co.uk](http://www.dunhamwindows.co.uk)

## Xross interiors

16 the cross lymm cheshire wa3 0uh

01925 758298

[xrossinteriors@live.co.uk](mailto:xrossinteriors@live.co.uk)

**Come and see our Home and Gifts department**

curtains • blinds • carpets  
 vinyls • poles & tracks • giftware  
 design and consultation

Computers for Absolute Beginners      French, Spanish & Italian conversation      French & Spanish A Level


DJLR Photography      Grade 5 Music Theory

Watercolour Painting      Silk Painting      Fitness Class

French Classes will be held during the day on Tuesdays at Lymm Baptist Church and Thursday at Penketh Oaks

English as a Foreign Language

Wine Appreciation      Cookery: Tea-time Treats, Italian, Indian, Mediterranean and Japanese



## LIFELONG LEARNING

Enrol for Adult Education Classes starting September 2010 - July 2011  
Short Courses and 1 Year Courses at Lymm High School

To find out more, come along to one of our enrolment evenings in the Languages Faculty between 6 - 8pm on:

Tuesday and Wednesday 7th and 8th September  
Tuesday and Wednesday 14th and 15th September

All our classes are run by experienced tutors and are a great way to make new friends and are a lot of fun!

Telephone: Carolyn Bygraves 01925 750701  
Email: cbygraves@lymmhs.co.uk  
www.lymmhs.co.uk  
Lymm High School, Oughtlington Lane, Lymm, Cheshire WA13 0RB

# Degree award for college student

(A LYMM man has won an award for being top student on his course at Myerscough College, Preston.

Paul Brennan won the John Reilly Research Award for the FdSc Farriery Degree – a foundation degree covering the shoeing and care of horses' hooves.

His course tutor Mark Caldwell said: "Paul can be extremely happy with his efforts during his time at the college. He has won this award because of his hard work, dedication and talent for the subject."

He will now move to the honours top up degree at the college.

Paul said: "I'm absolutely delighted to have won this award. I've really enjoyed the course and it has helped me to gain a wider knowledge into the art and science of farriery."



## Top economist coming 'home'

ONE of Lymm Grammar School's most distinguished former pupils is to address a supper meeting of Lymm Twin Town Society on November 13.

Economist Ruth Lea, is a non-executive director and economic adviser to the Arbutnot Banking Group but previously spent many years in the Civil Service, working in the Treasury, the Department of Trade and Industry, the Central Statistical Office and the Civil Service College.

She has also worked in the City of London and held various positions in banking and the media, regularly appearing on television and radio on economic matters. She was born in Warburton.

Dr Lea is visiting Lymm at the invitation of one of her former teachers, Peter Birchall, former deputy head at Lymm Grammar School and now chairman of the Twin Town Society.



# SAVE MONEY MAKE MONEY

No more frustrating house hunting - build your own  
It's rewarding & individual

You could achieve this in your own garden!

Contact **Claudia Wild** on **01829 760066** for no obligation advice



CB Homes Limited  
enquiries@cbhomes.co.uk      www.cbhomes.co.uk





# Lymm Parish Council Annual Report 2009 - 2010

1. The precept for the year was £135,200 and £40,888 was brought forward from the previous year. The total receipts for the year were £38403. The payments for the year comprised £26927 for administration, £21460 for the Village Hall, £3370 for the allotments and £93613 for miscellaneous items. The miscellaneous expenditure included Grant Aid totalling £30361 of which £8610 was to Lymm CAB, £10390 to Oughtrington Community Association and £3000 to Lymm Dickensian Christmas. The total payments for the year were £145370.

2. During the year the following matters were either discussed, carried out or supported :

a. The Parish Council now has a website where information about the Parish Council can be found at [www.lymmparishcouncil.gov.uk](http://www.lymmparishcouncil.gov.uk)

b. Lymm Duck Race, Lymm May Queen Festival, Lymm Festival and Lymm Dickensian Day were all very enjoyable events during the year organised by various volunteers.

c. The Parish Council has continued to support Churches Together with the monthly litter picks in Lymm during the summer months. These litter picks have greatly improved the cleanliness in the village centre.

d. Part of the Playbuilder grant awarded to Warrington Borough Council was used to upgrade the play facilities at Sandy Lane play area and to provide new challenging play equipment in the Ridgway Grundy Park.

e. The Parish Council has continued to work as part of the Lymm Environment and Heritage Group to oversee the projects being funded by the Heritage Lottery Fund Grant. The Group submitted a successful application to retain the Green Flag status at Lymm Dam in 2009.

f. The Parish Council held meetings were held during the year with Chris Wakefield and Officers from Warrington Borough Council to discuss safety measures and speed limits on Higher Lane.

g. Lymm Parish Council continued as a member of the South Warrington Parish Councils Community Support Officers Group and provided a contribution to the funding of the three PCSOs in Lymm

h. The Village Hall Playgroup secured a grant from Warrington Borough Council to purchase a removable fence for use outside the Village Hall so that the Playgroup children could enjoy outdoor play.

i. Local volunteers have worked very hard during the year to improve the Youth and Community Centre in Lymm. The Centre is now open on a regular basis for use by the youth and various community groups.

j. The Parish Council agreed to fund a bench or picnic table each year in Lymm and any suggestions for the location of a bench or picnic table should be sent to the Clerk (01925 753746/ [ypcook@aol.com](mailto:ypcook@aol.com))

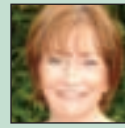
## Contact information

|                          |               |  |
|--------------------------|---------------|--|
| Village Hall Bookings    | Mrs Swindells | 01925 755494   |
| Council Chamber Bookings | Mrs Cook      | } 01925 753746<br><a href="mailto:ypcook@aol.com">ypcook@aol.com</a> |
| Allotment Garden Rental  | Mrs Cook      |  |

## Parish Council Website:

[www.lymmparishcouncil.gov.uk](http://www.lymmparishcouncil.gov.uk)

## Lymm Parish Council



Name: Cllr Mrs P Hunter (Chairman)  
Address: 19 Sandy Lane, Lymm WA13 9HJ  
Telephone: 01925 754480  
Email: [pam.hunter@uwclub.net](mailto:pam.hunter@uwclub.net)  
Committee: Planning Applications, Allotment Gardens & Village Hall sub-committee



Name: Cllr D Openshaw (Deputy Chairman)  
Address: 12 Booths Lane, Lymm WA13 0PE  
Telephone: 01925 753180  
07976 244 458  
Email: [daveaopenshaw@aol.com](mailto:daveaopenshaw@aol.com)  
Committee: Planning Applications sub-committee



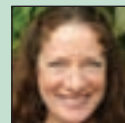
Name: Cllr R Barr (OBE)  
Address: 2A Danebank Road, Lymm WA13 9DH  
Telephone: 01925 751817  
01925 750911 (fax)  
Email: [r.barr@peartrees.com](mailto:r.barr@peartrees.com)  
Committee: Village Hall sub-committee



Name: Cllr Mrs C Coupe  
Address: 2 Limefield Avenue, Lymm WA13 0BQ  
Telephone: 01925 755817  
Committee: [charlotte@problemsatwork.org](mailto:charlotte@problemsatwork.org)  
Email: Planning Applications & Village Hall sub-committees



Name: Cllr L Gallimore  
Address: 13 Orchard Avenue, Lymm WA13 0JX  
Telephone: 01925 757972  
Email:  
Committee: Allotment Gardens sub-committee



Name: Cllr Mrs P Gaster  
Address: 72 Whitbarrow Road, Lymm WA13 9BA  
Telephone: 01925 751595  
Email: [poppyg50@hotmail.com](mailto:poppyg50@hotmail.com)  
Committee: Allotment Gardens sub-committee



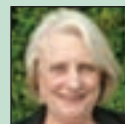
Name: Cllr June Gittins  
Address: 1 Longbutt Lane, Lymm WA13 0JB  
Telephone: 01925 753862  
01925 753456  
Email: [june.gittins@elastomer.co.uk](mailto:june.gittins@elastomer.co.uk)  
Committee: Planning Applications, Allotment Gardens and Village Hall sub-committees



Name: Cllr J Griffiths  
Address: 9 Manor Road, Lymm WA13 0AY  
Telephone: 01925 754651  
Email: [joe.griffiths@lineone.net](mailto:joe.griffiths@lineone.net)  
Committee: Planning Applications & Village Hall sub-committees



Name: Cllr I G Marks  
Address: 80a Whitbarrow Road, Lymm WA13 9BA  
Telephone: 01925 753051 (phone & fax)  
Email: [imarks@warrington.gov.uk](mailto:imarks@warrington.gov.uk)  
Committee: Allotment Garden sub-committee



Name: Cllr Mrs P Marks  
Address: 80a Whitbarrow Road, Lymm WA13 9BA  
Telephone: 01925 753051 (phone & fax)  
Email: [pammarks@hotmail.co.uk](mailto:pammarks@hotmail.co.uk)  
Committee: Planning Applications and Village Hall sub-committees



Name: Cllr Mrs S E Woodyatt (MBE)  
Address: 16 Oughtrington Lane, Lymm WA13 0RD  
Telephone: 01925 753850  
01925 758793 (fax)  
Email: [swoodyatt@warrington.gov.uk](mailto:swoodyatt@warrington.gov.uk)  
Committee: Planning Applications sub-committee



Name: Cllr W N Woodyatt  
Address: 16 Oughtrington Lane, Lymm WA13 0RD  
Telephone: 01925 753850  
01925 758793 (fax)  
Email: [nwoodyatt@btinternet.com](mailto:nwoodyatt@btinternet.com)  
Committee: Planning Applications sub-committee

# Fantastic facelift for play area

PUTTING other jobs on hold and working late nights ensured a Lymm businessman gave a "fantastic facelift" to an outdoor activity area for young children.

Because of his connections with the area, landscape gardener James Slavin worked for free on the project for pre-school children at Oughtrington Community Centre.

His connections also enabled him to obtain materials and labour donated by a number of other traders.

James, of J C Slavin Landscape and Garden Maintenance, managed to get the work completed within the pre-school group's budget of £7,000.

Work carried out included removing scrubs, clearing the site, fencing and providing raised planters. Other work included building an archway for flowers to grow on and painting fences.

He said: "The work took about a month and has given a fantastic facelift."



## Music Matters at Statham Primary

UNUSUAL musical instruments including a Swiss Alpine Horn, African Kudu Horns and an "exploding Tuba" were demonstrated to pupils at Statham Primary School, Lymm.

Musical duo Travelling by Tuba visited the school for a morning concert and workshops throughout the day.

The duo, sponsored by Manchester Airport, visited Lymm as part of their 80,000 mile-a-year roadshow which visits schools and other groups.

The project, called Music Matters, aims to encourage children to appreciate music and consider learning a musical instrument.

Chris Cranham and Stewart Death have been working together for 20 years. Each year they visit more than 200 schools, and tour venues throughout the UK and abroad.

**The Barn Spa**  
 HIGH LEGH, CHESHIRE. WA16 0RZ  
*New Natural Health and Beauty Spa*

[www.TheBarnSpa.com](http://www.TheBarnSpa.com)  
 01925 755 513

**OPEN DAY**  
**SATURDAY 18<sup>TH</sup> SEPTEMBER 2010**  
 MIDDAY TIL 5PM

*Join us and enjoy a complimentary glass of wine & canapés in the delightful setting of The Barn Spa. 'Taster sessions' & 30 minute treatments will be available for just £10, as well as many introductory offers and demonstrations*

Yoga • Beauty Treatments • Reflexology • Shiatsu • Meditation  
 • Caci & Oxyjet Facials • Pregnancy Yoga • Complementary Health • Arasys Inch loss & much more...

Relax and be pampered in the delightful setting of The Barn Spa as you indulge in a choice of Beauty treatments and Natural therapies designed for ultimate well being



Come along to our Open Day to discover for yourself what is on offer.



Every Tuesday – Starting September

- 10-11.30am Yin Yoga
- 12-1.30pm Mother & Baby Yoga
- 4pm-5.30pm Well Woman Yoga
- 5.45-7.15pm Pregnancy Yoga
- 7.30-9.30pm Yoga Flow



Visit Website for more info or call 755 513



# The Dionysos Estate



## My Perfect Holiday

I am often asked about my favourite holiday – and although many places are dear to my heart, I have fallen in love with unspoilt Turkey and have spent four out of my last five holidays there! One of my favourite hotels is The Dionysos Estate – built high on the canyon top above Kumlubuk Bay, this unique, village style property has 38 rooms, cottage suites and villas with private pools. The location will take your breath away.

It is one of the most relaxing hotels I have ever visited - imagine floating in an amazing infinity pool with stunning views to the deep blue sea beyond or whiling away an hour gently swinging in a hammock under a shady tree. A short hop on the courtesy shuttle takes you down to a private Sea Club for even more relaxation.

If you like some activity, the gym and tennis court are on hand and the area is a walkers' paradise. There is an excellent spa, a library, a delightful pool bar – and everywhere you look there are spectacular views. Getting out and about is easy – there is a courtesy bus into nearby Turunc, which has traditional waterfront restaurants, shops and a weekly market. Or for a complete change of scene, the hotel has a free boat to busy Marmaris twice a week.

Dining at the Dionysos is a highlight of the holiday and the hotel's own organic farm supplies the finest ingredients. The resident chef is one of Turkey's best known celebrity chefs and you can choose between the lovely al fresco restaurant, or the Sea Club, which by night transforms into a romantic waterfront restaurant.

Families are welcome during school holidays, but at other times the hotel has an adults only policy, to ensure a relaxed atmosphere that is ideal for both couples and singles.

If you like the sound of one of my favourite places, do give me a call on 01925 750 619 for more information and the latest availability.

*Linda Douse*

Mariner Travel



## FABULOUS VILLAS WITH PRIVATE POOLS

Our Turkey villa portfolio offers superb properties from designer villas with their own pools and waterfronts, to rustic houses in rural locations. Villas from 2 to 14 people are available from only £650 pp for one week including flights, transfers and car hire.

## SINGLES EXCLUSIVE

Mariner Travel is hosting a special Singles Week in 2011.

'Get togethers' in the bar and specially reserved tables for dinner

will be arranged and double rooms are available for sole use with no single supplement.

30 April 2011 - only £650 including bed and breakfast, four dinners, 2 excursions.

For details call Louise on 01925 750 619

## AMAZING OFFER AT THE DIONYSOS ESTATE

- only **£400** one week & **£750** two weeks -

Full Business Class available at a supplement

### Price Includes:

- BMI scheduled service charter flight from Manchester
- Pre-allocated seats and aircraft meals
- Minibus transfers
- Bed and breakfast accommodation
- Choose your room at the time of booking
- Complimentary Catamaran or Gentleman's Boat cruise
- High quality beach towel for you to keep
- Free boat to Marmaris twice weekly
- Courtesy bus to Turunc
- Free use of private beach club

Call Mariner Travel NOW & quote ref - LLE1

# 01925 750 619

Anchor House, 40 Booths Hill Road, Lymm, Cheshire, WA13 0DL  
[www.marinertravel.co.uk](http://www.marinertravel.co.uk)

# The pub the village almost forgot!

**IT was the village pub that Lymm forgot - until popular landlady Diane Jennings decided otherwise.**

Two-and-a-half years ago, the future of The Golden Fleece, in the village centre, was in the balance.

Ian Creighton, from the Punch Pub Company said: "I was faced with a decision about the pub's future. It was at its lowest ebb, was beset with problems and was on the verge of closure.

"As a company, we did not want to let this happen and I had heard about a landlady from the past who might, just might, be persuaded to come back.

"On a cold and wet April morning

the deal was struck and Diane Jennings agreed to return."

Since then, Diane has transformed the Fleece into a vibrant, successful pub which is now firmly back in the heart of the community.

Diane and her team's success has been such that the company whisked her away for a champagne weekend in Paris and she has won a luxury holiday for the biggest sales turnaround in the company.

Ian added: "The turnaround at the Golden Fleece is testimony to the determination and hard work of

Diane and her team in putting old fashioned values of great service, great products and great value back into the hard of the community and we are all very proud of what they have achieved."

The pub is also putting things back into the community. The car park is available to shoppers, free of charge, before opening time and the pub makes a monthly donation to St Rocco's Hospice - its local charity of choice.

It has created a new function room, The Narrowboat, ideal for family functions and available for hire for special events.

Great value food is on offer seven

days a week and there is live sport from Sky and ESPN, including 3D screens, for the new Premier League season.

When the sun shines, there is the canal-side beer garden where even the family dog is welcome!

Diane is not the only member of the Jennings family who has been helping put Lymm on the map. Her son, Mark, toured South Africa with the England Under-18 rugby squad, playing against Namibia, France and South Africa and scoring the first try in a game at the Nelson Mandela Stadium in Port Elizabeth.

Mark said: "It was an amazing trip and the team spirit was so good."

## Bid to banish the plastic bag



LYMM residents are being encouraged to re-use bags rather than take plastic hand-out bags from supermarkets and then throw them away.

The initiative comes from green group Low Carbon Lymm (LCL) who have been handing out linen bags, donated by Warrington Borough Council's "Love Food Hate Waste" campaign.

Students from the art department at Lymm High School have printed the LCL logo and website address on 250 of the bags.

Some 1.3 billion plastic bags are dumped in landfill sites every year nationally. They are harmful to the environment and to wildlife.

LCL's ultimate aim is to make Lymm a plastic bag free zone. Our picture shows LCL vice chairman Steve Walsh and member Su Williams with village butcher Malcolm Hopkinson who helped distribute the bags.

## Pre-school children learn about plants



PRE-school children at Lymm are learning about plants and how they grow, thanks to parents who were able to acquire gardening tools by collecting supermarket vouchers.

Children, parents and staff at St Mary's Pre-School collected the vouchers which provided a mini-green house, trowels, a planting tray and watering cans. Since then staff and children have been busy sowing seeds and tending the vegetables, herbs and flowers they planted.

Among the things they planted were lettuce which they later tried as part of their daily snack.

Lynn Smith, who co-ordinates the gardening activity said: "It is a delight to see the excitement on the children's faces as they take your hand and lead you to the garden so show you 'how big' the plants have grown.

"We are keeping a scrap book so we can see the changes we have made in the garden and the growth of the seeds over time".

Some of the children are so keen they have now learnt how to 'dead head' the pansies as well as plant and water the seeds.

**St Mary's Pre-School**

look forward to welcoming you into their family

\*Pop in for a visit and see for yourself what fun we have learning through play....

Craft, role play, experienced staff, small world, planting + gardening, pond dipping, link to all local schools, outdoor play area, Free places for 3+ year olds\*, mark making, from age 2½, parking

Call 07947 692003

www.stmaryspreschool.co.uk

\*Sessions during school term times are Mon, Tues & Fri 9.15am-12.45pm, Wed & Thurs 9.15am-12.15pm

\*nursery grant provided by Warrington Borough Council, rules apply

## Christian faith explored

A COURSE to enable people to find out more about the Christian faith is to be run at Lymm Baptist Church.

The 10-week 'Alpha course' will start on Saturday, September 18 at 7.30pm with a free, informal Alpha Launch Dinner.

Fourteen million people worldwide have joined Alpha courses which provide an opportunity to explore what it means to be a Christian in a low key, friendly and fun way.

Alpha is a nationally recognised course run by local churches.

More details are available from the church on 01925 752805 or from [www.lymmbaptistchurch.com](http://www.lymmbaptistchurch.com)

A very warm welcome to  
**THE GOLDEN FLEECE**



**Come and see what everyone is talking about!**

## **The Narrowboat**

**Our newly refurbished bar showing Sky Sports 3D**

Watch all the action live in amazing 3D TV It's like being there!

All major Sky Sports and ESPN games shown on big screens



The Narrowboat bar is available to hire for private functions during the day and evening

Free WI-FI



Large beer garden overlooking the canal



Great value food and drinks at your local



Tel: 01925 755538 The Cross, Lymm, Cheshire WA13 0HR

## Statham Lodge Hotel

### Lunchtime Lite Bites & Bar Meals

Served Monday - Friday; Noon - 2pm

Choose to dine in the comfortable & relaxed surroundings of the Squires Bar, or Al Fresco at our Terrace Gazebo with beautifully landscaped gardens and herbaceous borders.

#### LUNCH OFFER

Free drink with any main meal purchased from our Squires Bar Menu\*

#### Afternoon Tea

Served Monday - Friday; Noon - 5pm



A selection of sandwiches, warm scones with jam & cream & pastries, served with a pot of tea or coffee

**Only £9.50 per person**

#### Evening Meals

Available every day in the Squires Bar 6pm - 9:15pm

\* Select from a glass of wine, pint of beer or any soft drink. Offer valid until 15th September 2010



Warrington Road, Statham, Lymm, Cheshire, WA13 9BP  
Tel: 01925 752204 www.stathamlodge.com

## New Inner Wheel President



Lymm Inner Wheel retiring president Mrs Gladys Carr is seen handing over the chain of office to incoming president Mrs Frances Stubbs.

Last year the club's main charity was Diabetes UK and they were able to send £1,300 raised through various charity events.

## Charity celebrates 25th anniversary

A POPULAR Lymm charity is inviting people to its 25th Anniversary Open Day and Family Fun Day on Sunday August 22.

The Children's Adventure Farm Trust (CAFT) event is open to all and will include stalls, funfair rides, brass band and bouncy castle.

Other attractions include a tearoom and bar, barbecue and face painting. There will be a display by Gauntlet Birds of Prey and the chance to try a six metre climbing wall.

CAFT at Booth Bank Farm, Millington, helps disadvantaged children and money raised by the day will support the charity. The event runs from 1pm to 4pm.

Anyone who can help by sponsoring the event, donating food or prizes or volunteering on the day is asked to contact CAFT on 01565 830053.

## GET 20% OFF OUR MENU

See us on Lymm

The Spread Eagle is proud to present our John Willie's pie and ale house menu. It offers Great British pub food, with weekly specials, all freshly prepared. Bring this advert with you to receive 20% off your bill

In September we are having a Freddy Mercury evening and a Mexican Hat Party, see lymm.com for more information.

Spread Eagle, 47 Eagle Brow, Lymm, Cheshire, WA13 0AG  
Tel 01925 757467 Email spreadeagle@jwlees.co.uk

Terms & Conditions: 1. One advert is valid for up to six people including children. 2. 20% discount applies to your total bill, including food and drink. 3. Offer is subject to availability and until 26th September 2010

**BE YOURSELF**

## The Lymm Hotel *events*

### Wedding Open Day 12th September

12noon to 4pm - Free Entry, Free Car Park  
Bucks Fizz on Arrival.

### Wedding Fayre 10th October

### Hallowe'en Murder Mystery Sat 30th October

£23.50 per person. Work out whodunnit while enjoying a mouthwatering meal and good cheer

### Christmas Party Nights: 3rd, 4th, 9th, 10th, 11th \* 16th, 17th, 18th, 22nd December

Brochures now available hot off the press with loads of special offers

- Weddings • Christenings • Birthdays • Anniversaries
- Parties and Gatherings

PLEASE FEEL FREE TO CONTACT US TO MAKE AN ENQUIRY OR TO MAKE A RESERVATION.

**Tel: 01925 752233**  
Whitbarrow Road, Lymm, Cheshire WA13 9AQ  
Email: general.lymm@macdonald-hotels.co.uk www.macdonaldhotels.co.uk/lymm

## Staying young while growing old

TIPS on staying young while growing old were given to High Legh WI.

About 34 members attended to hear speaker Margaret Clephan, from Goostrey WI.

She told tales of her family going back many generations and how she had found out that her maternal grandparents were related to John of Gaunt. She sang to members "Count Your Blessings," after relating a story on how her grandmother told her to do just that instead of moaning. She said the words made her appreciate her family and home.

Two members, Jacky Kay and Tracy Cooke, went to Denman College on a bursary. Their course was Discovering Oxford, and they had both enjoyed it.

Members were invited by the churches in Lymm to choose a hymn for the End of Festival Service. They chose Jerusalem and proudly sang it with the congregation.

## Musical extravaganza

A MUSICAL extravaganza is to be held at Cotebrook House, Lymm on Sunday, September 5 by the Manchester Reed Trio and supporting artists. Admission will be £5 - half price for children under 12 - in aid of charity and people are being invited to take a picnic to enjoy in the grounds. The event starts at 2.30pm. Further details are available from 01925 752583.

# Running success

LYMM'S newest running club was out in force at the village's first 5k race.

Despite it being one of the hottest days of the year so far eight Lymm Runners members clocked up respectable times.

Kieran Walshe, even came in ninth out of the men, with a time of 19 minutes and 53 seconds.

The rest of the runners' times ranged from 20 minutes and 27 seconds to 32 minutes and seven seconds.

Club captain Chris Lees said: "I was exhausted just watching everyone, it was such a hot day but all the Lymm Runners made a great effort in the heat."

"We have a real enthusiasm in the club and our training is beginning to show in some great times."

The Lymm 5k was organised by Spectrum Striders and is part of the North Cheshire 5k Grand Prix - five 5k races over five weeks.

Several of the runners were taking part just two days after racing in the Warrington 10k, organised by Warrington Road Runners, where 11 members recorded times from 40 minutes 59 seconds to 61 minutes and 51 seconds.

Lymm Runners meet every Tuesday and Thursday at 7pm outside Lymm Library and on Sundays at 8am. All abilities are welcome.

For more information visit: <http://lymmrunners.org.uk>.



From left, Stewart Needham, David Holmes, Kathryn Ryan, Ian Pike, Kieran Walshe and Debbie Crouch

5 YEAR WARRANTY  
ON OUR VIKING RANGE  
OF LAWN MOWERS



STIHL Viking

For full sales and service of STIHL & VIKING products:

Opening Times:  
Mon-Fri 8.30am-5pm  
Saturday 8.30am-1pm

Tel: 01925 740217

DUTTONS  
POWERWORKS

The Smithy, Chester Road,  
Daresbury, Warrington WA4 4AJ  
[www.duttonsmowerworld.co.uk](http://www.duttonsmowerworld.co.uk)




FREE Local Pick-up  
& Drop Off Service



Quality Assured



# Agden Park Motors



Park Garage A56, Agden Brow, Lymm

5 Star

workshop facilities  
for servicing and repair



BODYSHOP  
01925 752235

Over 300  
tyres

at competitive prices!



MOT Testing

petrol & diesel



AIR  
CONDITIONING  
REGAS/SERVICE

BIG ENOUGH TO COPE . . . SMALL ENOUGH TO CARE!

Contact ALLAN or GEOFF on 01925 752447

# Shop Local

Welcome to our special feature which is aimed at encouraging our readers to support local businesses. Any local business wishing to feature in future editions please contact us on 0800 955 5247. Please mention this publication when responding to an advertiser.



## Pestaway

Wasp, Ant, Silverfish Rat, Mice & Squirrels Specialist

25 Years Experience

All Work Guaranteed

Call Now On 07823 338 682 or 01925 755 702

**elmas** 01925 756049  
MEDITERRANEAN CUISINE

www.elmasrestaurant.co.uk 2 Pepper St, Lymm WA13 OJB  
Newly opened following a bar and dining extension!



Award for Hygiene

Breakfast, Lunch & Dinner Menu available or just call in for coffee or a cocktail.

Open 11.30-22.30 Mon to Fri and 11.00-22.30 Sat and Sun



Lymm Electric & Hardware EST 1974

Electrical Goods Repairs • Rewires Alarms • Security Lights

NICEIC approved electrical contractors

Dyson/Vac repairs & Service

All work guaranteed

01925 755252

12 Bridgewater Street, Lymm, Cheshire

**BALANCE**  
MASSAGE & THERAPY

Balance is a company which provides a variety of Holistic therapies from Sports Massage, Pregnancy Massage, Swedish Massage, Reflexology, Hopi Ear Candle and Tibetan Acupuncture Head Massage, at different places from our therapy room at Lymm Leisure Centre to the sports field and even at your place of work. Balance provides a treatment which is personalised to each individual or team, therefore you are able to receive the maximum benefits from your treatment.

07881 600 565 emma@revitaliseatbalance.com  
www.revitaliseatbalance.com



*The Naked Mannequin*  
6 The Cross, Lymm WA13 0HP  
Tel: 01925 755586  
*'Edgy sophistication with an eccentric twist'*

Charas HUNTERS & GATHERERS

**SALE UP TO 50% OFF**

Would you like the UK's best value domestic gas & electricity?

With our unique "Triple Value" guarantee we will:

- 1) Guarantee our prices will always be cheaper than British Gas.
- 2) Guarantee our prices will always be cheaper than your regional electricity supplier.
- 3) Guarantee our prices will always remain competitive with the cheapest tariffs available from the "Big 6" suppliers.

- Easy to switch • No minimum contract
- You keep the same pipes and meters
- You receive exactly the same gas and electricity

For full details: 0800 955 5247

New Media Centre, Old Road, Warrington. WA4 1AT



## It's a Fact!

More Lymm businesses advertise in Lymm Life magazine every month than any other publication

Call us now on 0800 955 5247

for more details on how you can generate more business from less than £10 a month!



# Rugby club launches Colts Academy

LYMM Rugby Union Club has announced the launch of a Colts Academy. Junior (U17) and senior (U19) colts squads have joined together under the direction of Academy director Mark O'Callaghan.

This follows a series of highly successful seasons for the Colts teams, including a National Colts Cup in 2009 and Northern Colts Cup this year.

Mark said: "Through the Colts Academy we are looking to reinforce the links between our senior and junior sections in a structure providing all our Colts players with a level of coaching and support more usually found only at more senior level. As well as a first rate coaching team they will have access to a strength and conditioning specialist as well as the club's physiotherapists. We also plan to involve our U16 age group in the Academy as the season progresses to prepare them for their move to Colts rugby next season."

First team player and coach Lee Pickles, will lead a team of assistant and specialist coaches drawn from fellow members of the 1st team playing and coaching staff assembled to provide a broad range of high quality coaching.

He said: "I am delighted to take on the role of head coach of the new Colts Academy. The talent of our junior players is illustrated by their success in recent years. I and my team are excited by the prospect of helping them develop both individually and as teams to maximise their success and enjoyment from their rugby as they move towards the senior game."

Both junior and senior Colts sides will play in the "A" divisions of the Raging Bull North West Colts Leagues next season.

Academy numbers are healthy but as Mark points out: "All teams lose players over the close season so we are always on the look out for new recruits. We are also seeking sponsors for the Academy and its teams which play throughout the North West."

## Reader's Letter

Please send your correspondence to:  
Lymm Life, New Media Centre, Old Road, Warrington WA4 1AT  
or email: [info@lymm.life.co.uk](mailto:info@lymm.life.co.uk)

### Re: Garage Plan Approved

Sam Walker, Lymm

I FIND it curious that, yet again, you have found the need to report on the building of my garage, especially when there are many more controversial developments within the village which must be of more interest to your readers than a garage.

So, to put the record straight: My development is for a double garage, with space for a garden store at the back and a split level inside so that I can work away from the property in a quiet area when my kids get home from school. The plans that have now been approved are for a development which is smaller than one for which there was already planning permission granted and the garage will be the same size as the garage opposite in Old Smithy Lane.

Eleven neighbours did not make objections, there were 11 objections, from just two neighbours, and when the independent planning inspector made his ruling on the appeal, none of these were upheld.

Whilst your reporting has incensed me enough to reply, I would also like to take the opportunity to thank everyone who visited my garden as part of Lymm Festival Open Gardens in support of St Rocco's Hospice and confirm that we managed to raise an additional £300 on the day for my daughter's special needs school.

**Editor's note:** Having reported the original decision of the planning committee to refuse permission for this development, we felt it only right to report the successful appeal. *Lymm Life* regularly reports planning decisions in the village.

**St Mary's Pre-School**  
look forward to welcoming you into their family  
\*Pop in for a visit and see for yourself what fun we have learning through play....

craft, role play, experienced staff, small world, planting + gardening, pond dipping, links to all local schools, outdoor play area, Free places for 3 + 4 year olds\*, mark making, from age 2 1/2, parking

Call 07947 692003  
[www.stmaryspreschool.co.uk](http://www.stmaryspreschool.co.uk)  
\*Sessions during school term times are Mon, Tues & Fri 9.15am-12.45pm, Wed & Thurs 9.15am-12.15pm  
\*nursery grant provided by Warrington Borough Council, rules apply

## Obituaries

### George Arthur Higgins



THE funeral has taken place of George Arthur Higgins (known as Tish), of Booths Hill Road, Lymm.

He died at Applecourt Nursing Home, Warrington, on June 29 aged 90.

Lymm-born Mr Higgins was well-known in the community. He played football for Statham and Lymm Rangers and was a member of Lymm Pigeon Club.

He leaves his wife Amy, son Kenneth, daughter-in-law Val, daughter Barbara, son-in-law Tom, grandchildren Victoria, Mark, Andrew and Vicki, and great grandchildren Harry and Evie.

Funeral arrangements were by John Burrows and Sons, Lymm.

### Brian Hewitt

THE funeral has taken place of Mr Brian Hewitt, aged 73, of Star Lane, Lymm who died at home on June 16.

Mr Hewitt was formerly employed as a JCB driver at Tarmac. But his main hobby was his garden and allotment, growing all his own vegetables and even helping other people out with their gardens. He leaves a widow, Maureen, two sons, Robert and Paul and a daughter, Hazel.

Funeral arrangements were by John Burrows and Sons of Lymm.

### Herbert Heidenreich

THE funeral has taken place of Mr Herbert Heidenreich, aged 86, of Albany Road, Statham, who died on July 7.

The service at Dunham Massey Crematorium was attended by his immediate family and friends and was conducted by Father Michael Burgess.

Funeral arrangements were by John Burrows and Sons of Lymm.

**Deadline for the October issue of Lymm Life is September 7**

Established 1878  
**John Burrows & Sons**  
Independent Family  
**Funeral Directors**  
M. G. Tandy  
J. A. Tandy  
16 Higher Lane, Lymm  
Tel: 01925 752501

**twentyfourseven**  
design and print ltd

**Special Offers**

- 500 Full Colour Digital Business Cards **£35.00**  
(Buy 1 set, Get 1 set free!)
- 100 A3 Full Colour Posters **£38.00**
- 500 A6 Full Colour Double Sided Flyers **£50.00**
- 10,000 A5 Full Colour Flyers **£248.00**  
(Pay for 1 side, Get the other printed for free!)
- 60" x 40" Full Colour Posters **£12.00**

Subject to VAT where applicable

**t. 01925 240 247 e. [info@247print.net](mailto:info@247print.net)**

a. The New Media Centre, Old Road, Warrington, WA4 1AT

**CLASSIFIED**

**Call 0800 955 5247 to advertise**

**ACCOUNTANCY & BOOKKEEPING**

**APPLEGATE & CO** licensed and regulated by the AAT to engage in public practice in Accountancy, Book-keeping, Payroll, VAT, Self Assessment. Tel: **01928 739996/07803 218343. 2 & 8 Collinson Court, Frodsham WA6 7PN.** (083/11)

**AIR CONDITIONING**

**CLIMATE CONTROL BY WARRINGTON** based 4 Seasons, for offices, shops, surgeries, schools, homes and conservatories like yours! Installed in a day guaranteed 5 years. Keeping you cool when it's hot and warm when it's not. **www.4sac.co.uk 01925 868960** (06/10)

**BATHROOMS**

**The Bathroom Refurbishment Co.**  
We can create the Bathroom of your dreams  
One Warrington based Company  
One Job From start to finish  
Unique 3D virtual CAD design system  
Please visit our website  
[www.bathroomrefurbishment.co.uk](http://www.bathroomrefurbishment.co.uk)  
Please Ring Wayne  
**01925 826 828 or 07976 574 828** (05/1)

**LYMM KITCHEN & BATHROOM PROFESSIONAL INSTALLATION.** Ceramic wall & floor tiling. For free estimates and advice contact **Rob Evans on 01925 752623 business or 07763 770408 mobile.** Est 2002. Local references provided (19/10)

**BUILDING SERVICES**

**18TH CENTURY ENGLISH OAK BEAMS** and truss for sale. I can arrange transport. Call **Keith Lyon Mob 07860 329315 or 01925 763015.** (11/10)

**BIG DIG Groundworks**  
Flagging, Block Paving, Garden walls, Fencing, Patios, Drives, Foundations. For free estimates call Mob: **07934 563 266** or Tel: **0153 424 5462** [www.bigdiggroundworks.co.uk](http://www.bigdiggroundworks.co.uk) (08/11)

**BRICKLAYER AVAILABLE** for garden walls, pointing etc. Tel: **01925 755441 Mobile: 07966 491624** (11/10)

**THELWALL BUILDING SERVICES,** extensions, internal alterations, brickwork, roofing, joinery, plastering, upvc windows and doors, soffits, facias, guttering. All work guaranteed. 20 years experience. For free quotes call **Gary on 01925 266646 or 07808 169278** (08/10)

**CARPETS, CURTAINS & INTERIORS**

**BRIDGEWATER FLOORING AND BLINDS** we supply and fit carpets, vinyls, laminates, karndean, commercial flooring and tiles. Blinds-venetian, vertical, roller and roman. Outdoor awnings, curtains, upholstery, tracks, fabrics, poles and finishing touches showroom open at agden brow. Free measure quotation service. Tel: **01925 755805. Closed Wednesdays.** (12/11)  
**CUSTOM-MADE** curtains and loose covers. All accessories supplied and fitted. Made-to-measure blinds. Our fabric or yours. Tel: **Orchard Soft Furnishings 01925 756388.** (15/11)

**Paul Bains Flooring Solutions Ltd**  
Carpets, Wood, Vinyl, Laminates  
*Domestic & Commercial Supplied & Fitted*  
Family business covering all aspects of flooring including domestic & contract locations  
Uplifting of old flooring can be arranged  
Moving of furniture by arrangement  
Limited disruption from start to finish  
Check website for previous installations  
[www.paulbainsflooringsolutionsltd.co.uk](http://www.paulbainsflooringsolutionsltd.co.uk)  
**Office: 01925 758835**  
**Mobile: 07973 376224** (07/11)

**CARPET CLEANING**

**A1 STAINBUSTERS:** Fully guaranteed carpet and upholstery deep dry cleaning. Clean & dry in only ONE hour. Quotes for both commercial and domestic. Contact the Local expert **John Latham on 01925 205210 or 07765 314080** (10/10)

**SAFE CLEAN: SAFE ORGANIC CLEANING.** Specialists in cleaning all leather and fabric upholstery, rugs, carpets and curtains in situ. Ask about our new organic allergy relief system, Guardsman stain protection plans and carpet repairs. **Richard Vaal on 0808 144 8178** (06/11)

**SIMPLY THE BEST CARPET CLEAN YOU WILL EVER** have. Cleaners UK Ltd. Est 22 yrs. Have your carpets & sofas beautifully deep cleaned leaving them fresh smelling & colour restored. Latest & best methods. Dry/steam. Professional, reliable & affordable. Call **Neil Riley on 01925 264989/07831 336060** [www.cleaners-uk.net](http://www.cleaners-uk.net) (12/10)

**CENTRAL HEATING**

**CORGI REGISTERED GAS ENGINEER.** Andy Gas of Lymm, specialist in: Boiler upgrades, servicing, repairs to all domestic heating and gas appliances. Professional service. **Tel Andy on: 07753 838129 or 01925 753712.** (03/11)

**CHILDREN'S ACTIVITIES**

**TUMBLE TOTS** is the leading national physical play programme for children, classes available in Knutsford Hale & Bowden. We can be booked for private parties. Contact **Jane on 07812-144450. www.tumble tots.com/sale** (15/11)

**CLEANING SERVICES**

**arleys angels**  
• Spring Clean Specialists  
• Presenting your home for sale  
• Moving house  
• After building work cleans  
**01925 266834**  
... because you're worth it! (06/1)

**THE CLEANING FAIRIES.** We'll work our magic to make your home sparkle clean. No home too big or too small. Call **Claire 0782040898 or Hayley 07515009645.** (10/10)

**SIMPLY THE BEST CARPET CLEAN YOU WILL EVER** have. Cleaners UK Ltd. Est 22 yrs. Have your carpets & sofas beautifully deep cleaned leaving them fresh smelling & colour restored. Latest & best methods. Dry/steam. Professional, reliable & affordable. Call **Neil Riley on 01925 264989/07831 336060** [www.cleaners-uk.net](http://www.cleaners-uk.net) (12/10)

**COMPUTERS**

**Having Trouble With Your Computer?**  
Running too slow?  
Want to upgrade... go wireless?  
Call for experienced engineer  
Tel: **07974 448 165 or 01925 751 546** (03/11)

**COUNSELLING**

**Birchbrook Counselling Service**  
Discreet and confidential counselling service  
Reiki healing and attunements  
Emotional and Physical Journey work  
**Call 07951 266476** (06/11)

**DELIVERY SERVICES**

**FURNITURE FERRY LIGHT REMOVALS.** Collections arranged from Ikea, Costco and other stores, garden centres, auctions etc. You choose, you buy, I deliver - SIMPLE. Reliable, inexpensive service. Tel: **Matt 07970 178 333 or 01942 732768. www.furnitureferry.co.uk** (05/11)

**TnM Couriers** - specialists in urgent UK same day deliveries, international and UK next day services available, contract work undertaken, parcels to pallets, no job too small or too big, competitive rates. **Call 01925 639029.** (06/1)

**DRIVEWAY & PATIO**

**PAVED AREAS NEED POWER WASHING?** We can transform your block paving, flags or tarmac. Super power washers also to hire. **Millington Power Cleaning 01565 830547 or 07983 837994** (06/11)

**ELECTRICAL CONTRACTORS**

**A1 ELECTRICAL SERVICES PAUL LEWIS.** For extra sockets/lights, main board upgrades to full rewires, no job too large or small. No call out fee. All work guaranteed. **Tel 01925 758337 or 07966 386806.** Est 23 years. (12/10)

**ELECTEK ELECTRICAL SERVICES NICEIC PART P Approved 17th Edition Electrician.** Rewiring, fuse boards, additional sockets and lights, burglar alarms and security lights. Free estimates and advice. **Call John 01925 754241/07977 560015.** (09/10)

**EVERGREEN ELECTRICAL CONTRACTING.** NICEIC approved contractor. For lights and sockets to rewires, fuse-box upgrades. Qualified electrician. All work is to the latest IEE wiring regulations. No job too small. Most major credit and debit cards accepted. **Tel: David on 01925 724219 / 07971 407022.** (06/11)

**TRUST PROPERTY ELECTRICAL SERVICES.** NICEIC Part P Approved Contractor. All Electrical work undertaken. Inspection & Testing & PAT Testing. All work certified & guaranteed. **Call Tim on 07754409906 or 01925 601055** (06/11)

**EQUESTRIAN**

**LYMM RIDING SCHOOL.** Learn to ride with friendly atmosphere, group lessons or private. Horses/ponies well schooled. Lessons from £10, we offer tests with pony club cert, please ring for more details. Training for pony club. **Rebecca Bennett RegAl. 01925 750435. Mob 07778 866006.** (12/11)

**EQUESTRIAN SUPPLIES & ANIMAL FEEDS**

**STABLES SADDLERY.** EST. 1964. Good stock of all equestrian supplies and animal feeds. Lots of interesting and unusual equine and canine collectables. **Tel: Barbara Williams on Lymm 752762.** (12/11)

**FIRES & FIRE SURROUNDS**

**Quality Fireplaces at Affordable Prices**  
**WARRINGTON FIRE SURROUNDS**  
Surround & Marble Only £299  
Quality Value Service Guaranteed  
**01925 417731**  
[www.warrington-fires.co.uk](http://www.warrington-fires.co.uk)  
8 Lovely Lane, Warrington (follow signs for hospital) (06/1)

**GARDENING SERVICES**

**A F GARDEN SERVICES**  
REGULAR MAINTENANCE  
TURFING, SOFT LANDSCAPING  
CLEARANCES, POWER WASHING  
HEDGE PRUNING  
**07796 818 686**  
**0161 928 1722**  
[www.afgardenservices.co.uk](http://www.afgardenservices.co.uk) (06/1)

**To advertise**  
**Call FREE**  
**0800 955 5247**

**GARDENING SERVICES**

**Beechwood Industries Ltd**  
LYMM BASED  
Does your garden need a complete makeover or just good management?  
Free Assessment  
Free Consultation  
Landscape Design  
Construction  
Planting  
Lawn Care  
Tree Surgery  
Garden Maintenance  
Contact Adam Halford on:  
**07749 253 308**  
[www.beechwoodind.co.uk](http://www.beechwoodind.co.uk) (06/1)

**FOUR SEASONS GARDEN SHOP EXCELLENT** selection of perennials, shrubs, bedding, hanging baskets and much more! Excellent quality and even better prices! Free parking! Near northwich CW8 2EB. **Call 07792313460** (12/11)

**GG SERVICES**  
Tidy Ups  
Domestic/Commercial  
Garden Maintenance  
Please Ring  
**01925 759422**  
**07831 229354** (08/10)

**J C SLAVIN**  
Landscapes & Garden Maintenance  
Pruning • Garden Clearance • Fencing  
Flagging • Driveways • Landscaping Designs  
**01925 756 839**  
Mob: **07599 747 373** (08/11)

**JDS LANDSCAPE SERVICES**  
Garden Design • Driveways  
Patios • Garden Walls • Fencing  
Decking • Planting • Turfing  
Regular Maintenance  
Tel: **01925 754883** Mob: **07515 967735**  
[www.jdscreate.com](http://www.jdscreate.com) (10/10)

**LAWN DRAINAGE AND SOIL AERATION.** No trenches, no drainpipes, no digging, no repairs, no hassle. If this interests you **Contact Bob Harper 01925 266852 or 07952 608701.** (19/10)

**M J NEEDHAM LANDSCAPES** Award winning with over 15 years experience. All aspects of landscaping, specialist in bespoke construction. Qualified design service available. **Contact 01925 825 645 or 07888 730 383** (09/10)

**SIMPLY GARDENS CONSULTANCY** offers maintenance and design advice; maintenance schedules; planting plans; expert plant selection; on-site training. Regular or occasional maintenance can be arranged. **Call Graham on 01925 766873 or email [gard.cott@btinternet.com](mailto:gard.cott@btinternet.com)** (13/11)

**GARDEN & PET MESHES**

**WE HOLD** large stocks of garden and pet meshes. Why pay garden centre and DIY prices. Trade enquiries welcome. **Wirecloth Sales & Development Ltd. 11A East View, Grappenhall, Warrington, Cheshire WA4 2 QH. Telephone: 01925 268417. Email: [wireclothsales@aol.com](mailto:wireclothsales@aol.com) Web: [www.wireclothsales.co.uk](http://www.wireclothsales.co.uk)** (19/10)

**GATES**

**Village Gates**  
SPECIAL OFFERS NOW ON  
Manufacturers and installers of quality timber gates  
[villagegates.co.uk](http://villagegates.co.uk)  
**01925 766629 or Mob 07588 707923**  
Church Lane, Culcheth (09/10)

**CLASSIFIED**

**Call 0800 955 5247 to advertise**

**HANDYMAN**

**Handyman Services**  
Home, Office & Garden

Gutter Cleaning, Repairs & Replacement  
Welding Repairs & Fabrication  
Fascias, Soffits & Windows  
Patio & Driveway Cleaning  
All Garden Work, Flagging,  
Fencing & Turfing  
Interior & Exterior Painting  
Plumbing & General DIY  
*You Name It - No Job Too Small!*  
Tel Neil: **01925 757905**  
Mob: **07813 201850**  
handymanserviceslymm@hotmail.co.uk

(11/10)

**HAIR & BEAUTY**

**PROFESSIONAL MOBILE** hairstylist, creative cutting, colour/colour correction, including foiled highlights. Tel: Lorraine **01925 755441** / Mob **0786 7910805**.

(11/10)

**HEALTH & BEAUTY**



**Body Treats**  
in the comfort of your own home  
Emma Baker  
Mobile Holistic & Beauty Therapist  
Call: **07891 809 805**

(08/10)

**HEALTH CARE**

**THE WHITE ROOMS PHYSIOTHERAPY** and Wellness Centre. Rapid expert assessment and treatment of all musculoskeletal injuries. Spinal Specialists! Discover and tackle the cause of your pain! **11, Henry Street, Lymm, Cheshire WA13-0LT.** Tel: **01925 752333** Mob: **07903 822700**.

(12/11)

**HYPNOTHERAPY**

**MICHAEL MAHONEY** clinical hypnotherapist for IBS, Stress, Anxiety and many other problems. Medical Research project experience, BUPA Service Provider. For **FREE information sheet please email TimelineServices@aol.com** or ring **01925-658322** www.healthyaudio.com

(6\*)

**IRONING SERVICES**



**Carol's Ironing services**  
NEXT DAY PICKUP & DELIVERY SERVICE  
Lymm  
Tel: **01925 767945**  
Mob: **07979 948197**

(11/11)

**ITEMS WANTED**

**OLD GOLD & SECOND HAND JEWELLERY ALWAYS REQUIRED.** Branded watches considered. Best prices paid at Knutsford's busiest jewellers established 1980. John Rees Jewellers, 91 King Street, Knutsford 01565 653 009

(08/10)

**JEWELLERY**



**evans & co**  
JEWELLERS & SILVERSMITHS  
**Jewellery Workshop**  
39 London Rd, Stockton Heath, Warrington, WA4 6SG  
Quality repair, remounting, design work and setting finished to a high standard.  
Loose certificated diamonds and gemstones supplied.  
Stockists of fine contemporary British Swiss and German jewellery.  
Tel: **01925 269292**

(11/10)

**JOINERY**

**LYMM & DISTRICT JOINERY & CONSTRUCTION** Loft & Cellar conversions. Extensions and renovations. All aspects of joinery undertaken. Free estimates no obligation. T: **07867 973566**. M: **01925 267611** W: www.joinerywarrington.co.uk  
**SPM JOINERY, 25 YEARS EXPERIENCE.** All aspects of joinery, garage conversions and extensions. Good rates, quality work and free estimates. Call **01925 754950** or Mob **07920 837852**

(08/10)

**KITCHENS**

**LYMM KITCHEN & BATHROOM PROFESSIONAL INSTALLATION.** Ceramic wall & floor tiling. For free estimates and advice contact **Rob Evans** on **01925 752623** business or **07763 770408** mobile. Est 2002. Local references provided

(11/10)

**LOCKSMITH**

**CHESHIRE LOCKSMITHS LTD** UPVC Door Specialist. Non Destructive Entry Service. Free Quotations. Lymm Based Business. Contact **Tony 07774 805 588**.

(11/10)

**MINI BUS HIRE**

**TAURUS TRAVEL.** 8 and 14 seat mini buses for all occasions including 24 hour airport transfers. Friendly and reliable service. Local and long distance. Fully seat belted. **Jon: 07786 630675**.

(11/10)

**OPTICIANS**

**ADCOTT OPTICIANS.** State of the Art opticians in the heart of Lymm Village. Comprehensive sight tests and a wide choice of spectacles tailored to you, whatever your budget. **01925 757075**

(11/10)

**PAINTING & DECORATING**

**N & K DECORATING SERVICES,** High Class Professional Decorators, Paper Hanging Specialist, Internal and External works undertaken, Lymm Based Company, Free Quotations. Call **01925 759936** or **07783 068377**.

(14/11)

**PAYROLL**

**WHY TRY TO BE A PAYE EXPERT?** Watkinson Black can provide a cost effective payroll service, releasing you to concentrate on your business. For further details please phone: **01925 413210** or e-mail: info@warringtonaccountants.co.uk

(6\*)

**PEST CONTROL**



**Wasp's Nests Destroyed £32**  
Same Day Service  
7 days per week  
Postcodes L, CW & CH - £44.50  
Ant Problems Permanently Cured  
Call FREE on  
**0800 019 8382**  
(01925 670375)  
www.harrierpestprevention.co.uk

(09/10)

**PHOTOGRAPHER**

**BRENDA GREEN ABIPP.** Qualified professional photographer for People, Environmental Portraits, Weddings, PR, Special Occasions. Established 30 years. websites: www.brenda.green.co.uk www.brendagreen@demon.co.uk Tel: 01925 753580.

(11/11)

**PICTURE FRAMING**

**EDGAR ART & FRAMING,** 19b The Cross Lymm. Picture framing, original art, jewellery, gifts and greetings cards. (Turn right at The Terrace Brasserie & Cafe and right again at the far end). Tel **01925 754700**.

(01/10)

**PICTURE FRAMING SERVICE,** also original paintings, prints, and giftware. Gidlee Printing Service for artists. **The Brentwood Gallery, 106 - 108 London Road, Stockton Heath, Warrington WA4 5LE.** Tel: **01925 601473** www.brentwoodgallery.co.uk

(11/11)

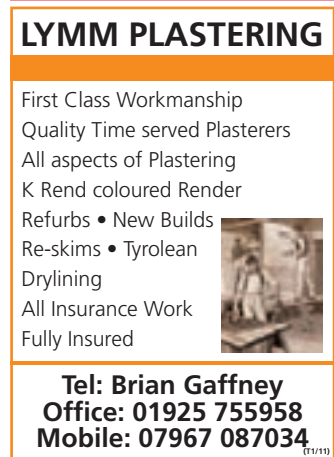
**PLASTERING**



**B.E.A. PLASTERING OF LYMM**  
Full rooms plastered • Skimming  
Bonding • Stud walls built  
All repair work large or small  
Tyroleaning/Rendering  
**10% DISCOUNT ON PRODUCTION OF ADVERT**  
Call David anytime on **01925 753966** or **07786 245068**  
www.beaplastering.co.uk  
Member of the Guild of Master Craftsmen

(09/10)

**PLASTERING**



**LYMM PLASTERING**  
First Class Workmanship  
Quality Time served Plasterers  
All aspects of Plastering  
K Rend coloured Render  
Refurbs • New Builds  
Re-skims • Tyrolean  
Drylining  
All Insurance Work  
Fully Insured  
Tel: **Brian Gaffney**  
Office: **01925 755958**  
Mobile: **07967 087034**



(11/11)

**PLUMBING**

**CL PLUMBING AND GAS SERVICES**  
Local honest plumber covering all aspects of plumbing and gas works. Boilers and central heating installed and repaired. Bathroom suites supplied and fitted. Cookers and fires fitted. Landlord gas safety checks. All plumbing emergencies - 24 hour call out. No job too small. OAP Discount rates. Tel **Craig 01925 819692** **07851 405466** www.clplumbing.co.uk  
**PB PLUMBING.** All domestic and commercial work. Fitted bathrooms and tiling. Small jobs welcome. Free quotes. Fully insured. C&G qualified. Gas Safe Registered Call **0161 928 3253** or **07821 554867** or Freephone **0800 824 7747** or visit www.pbplumbing.co.uk

(11/11)



**STEPHEN ROBERTS**  
Plumbing and heating, installations and servicing, boiler breakdowns, system upgrades  
free estimates  
**CORGI REGISTERED**  
Tel: **07830 331231**

(10/10)



**Plumbflow Ltd**  
Plumbing and Heating Services  
All plumbing & gas installation/repairs  
boiler replacement/servicing  
bathrooms  
Call today for a FREE QUOTATION  
**01925 468003**  
www.plumbflow.com

(6\*)

**RE-UPHOLSTERY**

**TRADITIONAL** and modern re-upholstery. Dining chairs, headboards, 3-piece suites etc. Customer's own fabric welcome. Tel: **Orchard Soft Furnishings 756388**.

(12/11)

**ROOFING**

**J & S ROOFING.** Roofing repairs & complete replacement. Built up flat roofing, Slating, Tiling, Fascias, soffits and gutting Free quotes, references available. Tel: **0781 488 0246** & **0788 639 0444**.

(08/10)

**TAXI / PRIVATE HIRE SERVICE**



**Frazer's of Lymm**  
Private Hire Service • Good local rates  
Reliable friendly service • up to five seater  
Airport • Station Schools • Business or pleasure for OAPs  
Contact **Nigel** on **01925 754426** or Mob **07812 674822**

(12/11)

**TAXI / PRIVATE HIRE SERVICE**



**HORN'S**  
Airport Transfer Specialists  
Stations, Airports, Nights Out  
4 & 7 seaters  
Prompt and reliable service  
**LYMM 751761** or **07881 786250**

(01/10)

**LARRY'S CARS AIRPORT TRANSFERS** and private hire. All UK airports covered. Over 10 years experience in the Lymm area. Call **01925 755060**. Mob **07989 342179**

(01/10)



**Silverfox Private Hire**  
Black, discreet 5-seat Chrysler Voyager for all occasions: Airport Transfers, Corporate Travel, Contract Work.  
Any destination. Professional, reliable service Tel: **07964 194150**

(05/11)

**TUTORS**

**CHESHIRE TUTORIALS** offers tuition. Primary to 'A' level. Tutors especially primary maths, science and English welcome. Tel: **01925 758296**.  
**EXPERIENCED TEACHER WITH PATIENT, FRIENDLY** approach. Beginners to grade 8. Adults welcome. A few places available for September. Call **01925 752773** for further details. **MusB (hons) PGCE**  
**FRENCH OR SPANISH TUITION** for conversation, exam preparation or business. Learn a new language, improve your language skills or prepare for your GCSE or 'A' Level exams. Contact: **Suzanne** on **01925 759597** or **07790 965250**

(08/10)

**TV - SATELLITE**

**AERIALS 2000** of Lymm. No job too small. All work guaranteed. Aerials and satellites supplied and fitted. Sky subscriptions available. OAP reductions. Sky Digital / On Digital. 7 days a week. Tel: **01925 753427**. Mobile: **07712 632315**.

(11/10)

**WINDOWS & GLAZING**

**NEIL COPELAND WINDOWS & Conservatories Ltd.** Specialist in uPVC double glazing windows, doors, porches, conservatories, also fascias and guttering. FENSA registered. All work guaranteed. Tel: **01925 756138** / **07961 361550**.

(12/11)

**SP GLAZING** for all your glazing requirements, double glazed units including failed and misted units, broken windows, mirror fixing. Kite marked to B/S. Time served glazier with over 30 years experience. For a friendly no obligation quote tel **Sam Pendlebury** on **01942 671859**. Mob **07919 660296**.

(10/10)

**WROUGHT IRON GATES**



**DUNRIGHT**  
The Gateway for a Good Job  
Wrought Iron Gates & Railings  
Security Fixings  
FREE Fitting & Estimates  
Tel: **01925 241998**  
Mob: **07749 690161**

(10/10)

**MOTORING SERVICES**



**PARKVIEW CAR SALES**  
We buy and sell **QUALITY CARS**  
Best price paid  
Telephone **Peter** on **01925 575737** / **07957 545479**  
23 Podgate Lane  
Podgate, Warrington  
Cheshire, WA1 3RS

(6\*)

# Banner & Co

Independent Residential Sales and Letting Agent



## PROPERTIES ARE MOVING!

Let us show you how we sell / rent our properties.

- As a privately owned company we have the ultimate incentive to sell/rent your property for as much as possible in the best possible timescale
- Open 7 days a week, accompanied viewings including late nights
- Advertising both locally, nationally and via the web
- Free rental guarantee

## JOIN IN OUR SUCCESS

If you are considering moving now or in the future, or would simply like some advice regarding your property please contact Linda or Andy



# 01925 753636

# [www.bannerandco.com](http://www.bannerandco.com)

Please note that if you have already instructed another agent, we would advise you to check any agreement you may have to ensure you are not liable for more than one commission by instructing us as your agent

