

Lymm

October 2010

Issue: 139

Life

FREE EVERY MONTH



Lymm
.com

Take a look!



Lymm Rushbearing Festival

See Centre Spread



**LYMM
PARISH
COUNCIL**

Approved by Lymm Parish
Council as the official
magazine for Lymm

Banner & Co

Independent Residential Sales
and Letting Agent

See our main advert
on the back page
for details

01925 753636

SPECIAL OFFER
Free Initial Consultation



www.gavinismydentist.com

General Practice | Dental Solutions

T:01925 75 65 65

HANDYMAN SERVICES

**HOME, OFFICE &
GARDEN**

You name it we do it!!
No job too big or small...

Call NEIL on:

(01925)757905

07813201850

Call today for a **FREE** quote

LYMM BASED

**need family
law advice?**

call your local
legal experts

free legal clinic
mondays 5pm-7pm



01925 604713
www.fblew.co.uk

Regular news updates at www.lymmmlife.co.uk

Editor

Gary Skentelbery

Production

Paul Walker

Business Manager

Tony Record

AdvertisingFreephone
0800 955 5247**Editorial**

01925 623630

Email

info@lymm.life.co.uk

Websiteswww.culchethlife.com
www.frodshamlife.co.uk
www.lymm.life.co.uk
www.warrington.tv
www.warrington-
worldwide.co.uk**Address**New Media Centre
Old Road Warrington
WA4 1AT*Lymm Life is published monthly
by Orbit News Ltd.**The contents of this magazine
are fully protected by copyright
and nothing may be reprinted
or reproduced without prior
permission of the publishers.**The publishers are not liable for
any statement made or opinion
expressed by third parties in this
publication.**Printed by TwentyFourSeven*

Third annual 'B Fest'

THE third annual "B Fest" at Lymm's Jolly Thresher pub takes place on Saturday, September 25.

There will be music from up-and-coming bands, other entertainment, competitions, food and plenty of fun.

The event will raise money for the Diabetes Research Charity and Myeloma Blood Cancer Research – and organisers are hoping to beat last year's record £3,000.

Starting at 12 noon, the B-Fest is so named as it is in Broomeage, and features beer, bands and barbecue.

R + N STANHOPE Coal and Log Supplies

Best Quality Coal
Smokeless Fuel
Logs Supplied in Bags and Bulk
Peat Bricks
Open 7 Days

Broomeage Farm
Burford Lane, Lymm WA13 0SE
Tel/Fax: **752830**

Editor's Comment

CONGRATULATIONS to everyone at Lymm High School on the record breaking A Level and GCSE results (see page 22).

It is indeed a remarkable achievement that every student seeking a university placement got their first choice when there has been such a huge demand for places.

I am sure there will be cynics out there saying "exams aren't as hard as they used to be," but it is not possible to compare modern day exams with those taken in yesteryear.

Lets face it, the world has moved on light years and technology like the worldwide web and mobile phones did not exist when I was at school - calculators and LCD watches were all the rage!

So lets give credit where credit is due to our high achieving students from Lymm High School, wish them



every success in the future and keep our fingers crossed there are plenty of employment opportunities out there in the future.

There are lots of conflicting reports about the economy but I am pleased to say here at Lymm Life we remain as busy as ever.

 the **natural fertility clinic**.co.uk
preparing you for pregnancy...naturally

Call Tracey Turton 01925 730123 for more details
Cheshire Natural Health, Beehive House, Tarporley Road, Stretton, Warrington

Call in the professionals!



from as
little as
£14
(inc VAT)



GreenThumb's professional treatments ensure your lawn looks lush, green and healthy. With prices starting from £14 per treatment, you can have a beautiful lawn for less than the cost of doing it yourself, and without the hassle!

Call your local branch today for a FREE lawn analysis and no obligation quote on...

01925 210669

GreenThumb
LAWN TREATMENT SERVICE



www.greenthumb.co.uk

Festival team seeks new recruits

LYMM Festival is looking for new recruits to join its team.

Anyone with experience of marketing, publicity, public relations or fundraising would be welcome.

After several years on the festival committee, Anna Leaver has decided to step down due to growing work commitments.

She said: "I have enjoyed my time with the committee enormously, but my business has really taken off so I have less and less spare time to help with the Festival.

"I would really recommend anyone to join the committee, as it is a great way to get involved with the community.

"As a newcomer to Lymm, I knew so few people when I first started, and now I feel very much part of village life."

The committee meets once a month and anyone interested in joining should contact director Honor Giles on 01925 758856.

Festival's wonderful legacy

GLORIOUS weather made this year's Lymm Festival more popular than ever - and as usual it has left a valuable legacy to enhance the local community.

People turned out in droves for the outdoor events and in thousands for the opening Street Fun and Food Fest.

Throughout the 10 days of the festival the various events raised substantial sums of money for charities such as St Rocco's Hospice, Steps, Jessie's Fund and others.

A totally unexpected but very welcome concert by international concert pianist Stephen Hough - who used to live at Thelwall - was arranged at the last minute and was a complete sell-out and provided a boost to festival funds.

One long-term legacy from the festival which the community will be able to enjoy for many years to come were wonderful carvings made by chain-saw sculptor Tim Burgess.

Thanks to a grant from the Stronger

Together Neighbourhood scheme, Tim created a storyteller's seat in the Oughttrington Community Orchard.

It is hoped a series of events will be held throughout the year, when it will be put to good use.

Tim also carved a whole series of sculptures at Lymm Dam.

Festival director Honor Giles said: "I walk my dog there regularly, and it is delightful to come across these lovely carvings, some obvious, but others less so, so you have to keep your eyes peeled.

"There is the imposing face of a Green Man carved out of a tall sycamore stump, with all sorts of other creatures carved into the wood around it. Others include a millipede, a sweet little owl, a king and a goblin head. We hope everyone who goes to the Dam will enjoy finding them".

However, thieves ruined what was to have been the main feature of the carvings at the Dam.

A larger, more elaborate and longer lasting statue of a Green Man, carved from a single piece of London Plane which was to be embedded in the ground, was planned.

But a few days after the wood had been delivered to the site, it

was stolen. Ranger Tim Baker said it must have taken more than one person and a lot of effort to drag the logs up the bridge path, and it was obvious that a chain saw had been used to cut it up into manageable chunks.

This major set-back meant Tim had to quickly rethink his programme of carvings.



Tim Burgess working on the storyteller's seat.

Sophies Soft Furnishings

Custom made curtains, cushions, roman blinds etc

Choose from our range of fabrics or supply your own

For free home visit or advice ring **Anne on 01925 754446**

www.sophiessoftfurnishings.co.uk

3 Holly Bank, Cherry Lane, Lymm

Whites Sports Warrington Market

1901 - 2001 - 100 YEARS OF EXCELLENCE

Specialists in:
Darts, Bowls, Snooker, Air Guns, Walking Sticks, Warrington Town Merchandise, Rugby, Cricket, Football

GIFT VOUCHERS AVAILABLE

Telephone/Fax: **01925 631531**

Kids Planet - Beamont
O'Leary Street
Warrington
Cheshire
WA2 7RQ
01925 630 879
Open 07:30 - 18:00

Kids Planet - Warrington
Ebenezer Chapel
Ebenezer Place
Ley Street, Warrington
Cheshire WA1 1UL
01925 417 350
Open 07:00 - 19:00

Kids Planet

... A WORLD OF DIFFERENCE

We offer the world as seen through the eyes of a child. We give the highest standard of day care and education creating a unique home from home for our children.

- Flexible opening times
- Experienced and enthusiastic staff
- Ultra secure environment with CCTV
 - Healthy nutritious menu
- Indoor and Outdoor play areas
- Excellent Ofsted Reports

Kids Planet - Lymm
29 Eagle Brow
Lymm
Cheshire
WA13 0NA
01925 759 220
Open 07:00 - 19:00

Kids Planet - Widnes
Kingsway Learning Centre
Victoria Road
Widnes
Cheshire WA8 7QY
0151 257 7079
Open 07:30 - 18:00

www.kidsplanetdaynurseries.co.uk

Smart FURNISHINGS

Wide Selection of Affordable Quality Furniture & Carpets

BUY NOW for pre Christmas delivery & to beat the VAT increase

All stock carpets include FREE fitting & underlay

PERGO

LIVING DINING SLEEPING FLOORING OCCASIONAL

Leather Chesterfields studded with 'Swarovski' crystals now on display

FREE Local Delivery • FREE parking
Established family business

OPEN: Mon-Fri 9am - 5.30pm, Saturday 9am - 5pm
www.smartfurnishings.co.uk

Smart Furnishings
Chapel Lane
Stockton Heath
Warrington WA4 6LL
Tel: 01925 267518

Old Firm, Celenese, Brintons, PERGO and many more top names

What's On

in Lymm

in association with
LYMM PARISH COUNCIL



October 11

LYMM HISTORY SOCIETY
Village Hall, Pepper Street, 8pm
'The life and times of Sir Thomas Egerton' -
Bernard Dennis

October 12

LYMM PARISH COUNCIL
Lymm Parish Hall, 7.30pm

LYMM LIONS GROUP

Meet: Bridgewater Club, Lymm
1st and 3rd Tuesdays of the month. 8pm
Contact: 0845 833 5729

LYMM THURSDAY EVENING BRIDGE CLUB

Lymm Village Hall every Thursday 7pm

MAPLE LODGE ART GROUP

Meet each Wednesday 9.30am - 12.30pm
Maple Lodge Guide HQ, Pepper St, Lymm
Details: 01925 755126

ROTARY CLUB OF LYMM

Meet every Wednesday at Statham Lodge Hotel
7.15pm for 7.45pm
Contact the secretary 01925 755757

LOVING HANDS

Knitting for charity at Lymm Methodist Church,
2nd and 4th Thursday each month,
1.30pm - 3pm. Details: 01925 823614.

MARKET LUNCHESES

Eagle Brow Methodist Church
3rd Thursday in the month
Light lunches 12 noon till 2pm
All proceeds to Opening Doors Charity, Warrington

LYMM SCOTTISH COUNTRY DANCE CLUB

St Mary's Church Hall
Second and fourth Fridays (Sept - May) 7.30pm
Details: 753853

LYMM BAPTIST CHURCH DROP LUNCH

Higher Lane. Mondays (during term time).
12 noon to 1.15pm. £2.50

LYMM JUBILEE GARDENING CLUB

Meet Third Wednesday of the month
Lymm Baptist Church, Higher Lane. 7.30pm
Visitors welcome. £2 includes tea and cake

LYMM FLORAL ART GROUP

Lymm Village Hall
Third Monday of the month
(except August) at 7.30pm

Non-profit making community organisations who
would like to feature in the
What's On Column
should contact Lymm Life on

01925 631592

Scout group seeks new leaders

A LYMM scout group, celebrating its 65th anniversary, is looking for new leaders to keep it going.

The 3rd Lymm (17th Warrington East) Scout Group is marking the anniversary by putting together a potted history of photos and reports about its past.

Past members with memories, stories or photos of past camps,

outings or Scouting friends are asked to contact Scout Group Secretary Mrs Anne Jordan, 8 Springfield Avenue, Lymm, telephone 755410 or email anne@jordanfamily.co.uk

The Scouts is now open to both boys and girls and provide a range

of activities and challenges. New leaders and helpers, male or female over 18, are needed to keep the group going. Anyone able to offer a few hours each week should contact Group Scout Leader Ray Banton on 07831 271 847 or email gsl@3rdlymmscouts.org.uk

No previous experience is needed and full training will be given.

Chopin recital in aid of festival



Photograph of Malcolm Binns by Peter Thompson

DISTINGUISHED concert pianist Malcolm Binns is to give a recital of music by Chopin in Lymm on Sunday, October 3.

The performance will be at Lymm United Reform Church, Brookfield Road and is being presented by Music in Lymm, in association with the Lymm Festival.

Mr Binns was Editor's Choice in the 2009 Penguin Guide to Classical CDs, which said of him: "...his pianism and musicianship are magisterial, matched by few and surpassed by none."

A veteran concerto soloist in many BBC Henry Wood Promenade Concerts he has worked with many leading orchestras and conductors around the world, including Boulez, Boult, Dorati, Haitink and Rattle. He broadcasts and records extensively.

Tickets, available at the door or in advance from Lymm Electric, in Bridgewater Street, are £8 (students and children £2).

The proceeds will be donated to Lymm Festival.

Coffee morning

A COFFEE morning is to be held at All Saints Parish Church Hall, Thelwall to raise money for St Rocco's Hospice - and offer an opportunity for some early Christmas shopping.

The event on Saturday, October 2 will start at 10am and continue until 4pm

Admission will cost £3 and includes tea or coffee and a slice of home-made cake.

Gifts on sale will include hand blown glass, cards, jewellery, jams and preserves, books, home-made chocolates, scarves, children's fleeces, wooden gifts, etc.

There will also be a raffle and guess the weight of a home-made Christmas cake competition.



**General Building
Extensions
Alterations**

Woodbine Road, Lymm
**Tel/Fax: 01925 756265
Mob: 07810 710210**
info@landbuildersltd.co.uk
www.landbuildersltd.co.uk

Cotebrook House

Forthcoming Events

MACMILLAN Coffee Morning
Friday 24th September - 10am
Come and join us and be a part of the largest Coffee Morning Together we can Beat Cancer

Day Centre Art Exhibition and Coffee Morning
Wednesday 6th October 10am until noon
We are selling unique one-off paintings. Your chance to own a future masterpiece!

Opposite Lymm High School
Oughtrington Lane, Lymm WA13 0QY Tel: 01925 752583




Tabley Computer Services
Understanding the needs of office, home and business users

- ◆ Let us fix your computer problems
- ◆ We come to you, no call out charges
- ◆ No fix, no fee

Tel: 01565 650949
Mobile: 07909 821416
Email: gordon@tableycomputers.com
Web: www.tableycomputers.com

The Complete Kitchen & Bathroom Service

Village Designs

We design and install all types of kitchens and bathrooms. Our comprehensive service includes all trades:
Lighting • Tiling • Flooring • Decorating etc

One local company from start to finish

Visit: www.villagedesigns.co.uk or
Ring Jeremy on 07810 421243

The Cross Clinic

LYMM Centre TEL: 01925-757513

Acupuncture - Aromatherapy - Reflexology - Physiotherapy - Osteopathy
Chiropody - Bowen Therapy - Hypnotherapy - Dizziness Rehab - Reiki
Lymphatic Drainage Massage - Counselling - Nutritional Therapy

Compare our fees

Acupuncture	£30	Hypnotherapy	£28
Physiotherapy	£30*	Head Massage	£28
Reflexology	£32	Counselling	£35
Chiropody	£25	Bowen	£35
Aromatherapy	£28	Osteopathy	£38

* indicates slight variations between different practitioners

Welcome to a proper bank



At Handelsbanken relationship banking still lives up to its name. With all key decisions made locally by us at the branch we are able to offer a highly personal banking service that is designed to meet your individual requirements.

We provide all the main services that high street banks provide, from day-to-day transactional banking, to the more sophisticated needs of the modern business. Our Individual Banking service is designed for high net worth customers who need a bespoke

offering with easy access to their manager. Putting the needs of the customer ahead of all else lies at the heart of everything we do. We tailor our current accounts, mortgages and loans to your individual requirements.

Chris Clarke
Karen McComb

Corporate Account Manager - Tel: 01925 575706
Individual Banking Manager - Tel: 01925 575708

1st Floor, 760 Mandarin Court
Centre Park, Warrington, WA1 1GG
www.handelsbanken.co.uk/warrington

Handelsbanken

Healthy teeth mean a healthy pet.

It is important to look after your Pet's teeth, so as part of **PET SMILE MONTH IN SEPTEMBER** we are offering



A Dental Clean & Polish
Cats for only £89.99
Dogs for only £99.99*

*A surcharge for anaesthetics of £20 will be applied to larger dog breeds

10% Off all tooth extractions

FREE Dental checks with a Vet



All offers apply for September only



LYMM VETERINARY SURGERY
www.willowsvetgroup.co.uk

10 Booths Hill Road
Lymm WA13 0DL

Telephone
01925 752721

Advertisement

KEEP YOUR PET'S TEETH HEALTHY

We all love to take care of our own teeth and are proud of our pearly white smiles but many of our pets' teeth are crying out for a clean up.

The soft pet food that we feed our animals can cause a build up of bacteria rich plaque on the surface of our pets' teeth which leads to inflammation of the gums which can directly affect the attachment between the tooth and the gum. When this attachment becomes weakened by inflammation the affected tooth can become loose and even fall out. Inflammation of the gums can also lead to abscess formation and concurrent blood borne infection of the kidneys, heart, lungs and liver.

Classic signs of oral problems in our pets are: Bad breath, excessive salivation, bleeding gums, lack of appetite or chewing on one side of the mouth, pawing at the face and sometimes facial swelling.

We stock a range of preventative dental care products including thimble type tooth brushes and beef or chicken flavoured toothpaste which will help to slow down the build up of tartar. Periodically your dog will need to come into the surgery to have the tartar removed from their teeth with an ultrasonic scaler. The teeth are then polished with an electric polisher- like a dental hygienist would use.



Bramble Lodge Day Nursery
Birth - 5 years

Good quality childcare and education in a homely environment.

Next to Lymm High School
www.bramblelodge.co.uk

01925 757597
36 Oughtrington Lane • Lymm



BYTEWYSE COMPUTERS LTD
THE SMARTEST CHOICE FOR SYSTEMS & SUPPORT

- Custom built PCs to meet all requirements
- Full Windows 7 supply and support
- Free home delivery and installation with up to 24 months warranty
- PC repairs and maintenance
- Remote Access Support
- Networking and PC support contracts for small or home businesses
- Call us now on 01925 759658

www.bytewysecomputers.com



Abbey Leys Farm Shop

Fresh Farm Food at its Best!

Organic Free Range Eggs • Goose and Duck Eggs • Pickled Eggs
Home Grown Potatoes • Fresh Fruit and Vegetables
Farmhouse Cheshire Cheese • Butter • Fresh Milk
Farmhouse Ice Cream and Lemon Cheese

Opening Times: 9.00am - 5.30pm Mon - Sat. Sun 10.00am - 4.00pm

ABBAY LEYS FARMERS' MARKET
First Sunday each month 10am - 2pm

Tim & Janet Harrison
753465
Peacock Lane, High Legh


The wall Upholstery

FOR THE MOST COMPETITIVE RATES IN THE AREA
49 Knutsford Road, Grappenhall WA4 2NR
Tel: 01925 604770

For all your upholstery needs

SPECIALISTS IN:

- Re-filling Cushions • Re-springing • Full Re-upholster
- Dining Furniture • Headboards

A wide range of sample books to choose from
All at competitive rates

PHONE FOR YOUR FREE ESTIMATES



When the circus came to town!

WHAT a strange sight as a clown dressed in red tartan and a green wig walks a bear on a lead down a Lymm residential road!

Lymm Life reader Rosemary Smith came across the photo, taken in 1982, and wondered whether any other readers remembered the scene.

She wrote: "I came across some photographs which I took 28 years ago and thought they may be of interest. They are images that will certainly never be seen again on Rosebank! Such activities would hardly be allowed today."

Mrs Smith, of Higher Lane,

previously lived in Hartley Close on the Rosebank estate.

At that time there was an area of open space between the original houses and the canal which was often used by a fair and a visiting circus.

Mrs Smith, whose children Ceri and Nicholas were young at the time, said: "It was very interesting for local children. The circus was very small with just an elephant, a couple of camels, a bear and a few clowns."

"It visited every couple of years and the children liked to watch the animals grazing on the field. I looked out of my window and saw a clown leading a bear down the street - it was a strange sight to see, so I took the picture."

Mrs Smith said the scene would be

'even more bizarre' today because of more concern for animal welfare.

"The bear was very close to the houses but didn't look threatening. The poor bear probably didn't have any teeth so couldn't bite and it doesn't look very aggressive," she said.



Odd, but not everyone knows we do retailers insurance.

We do.

Call 01928 735967 for a quote or pop into the office to talk to Kevin at NFU Mutual Office, 123 Main Street, Frodsham WA6 7AF



Agents of The National Farmers Union Mutual Insurance Society Limited. We do right by you

Get ready to celebrate

Open Evenings

Tuesday 12 October 7.30pm
Body re-shaping presentation covering breast enlargement and reduction, liposuction, tummy tuck and EVLA – treatment for varicose veins.


Thursday 14 October 7.30pm
Facial enhancement presentation, followed by a live demonstration of anti-wrinkle treatments by injection.

To book your place, or for further information, call **0800 158 8324** or email cservice-ch@spirehealthcare.com www.spirehealthcare.com/cheshire



Spire
Cheshire Hospital

Fir Tree Close, Stretton, Warrington, Cheshire, WA4 4LU



At our **Cosmetic Surgery Open Evenings** our expert Consultant Cosmetic and Plastic Surgeons will explain how we can help you achieve a new look for the party season.

Carol wants to fill 'gaps' in family history

A LYMM woman researching her family history is appealing to local people in the hope of filling in some gaps relating to a once thriving business called Duguids Ltd.

Carol Kerry has unearthed a photograph of some of the staff and is hoping someone may be able to identify them and provide more information about the firm.

Duguids Ltd, which was in Elm Tree

Road, closed in the late 1960s and was owned by her father's uncle, Sydney Duguid who was also a member of Lymm Urban Council, and was chairman in 1928.

Her father, William (Bill) Pearson,

worked for Duguids from leaving school at the age of 14 until his early 40s. He is pictured on the far right of the photograph.

According to family folklore, Sydney Duguid wrote an article on Clean Air that was quoted in Parliament, lectured at Manchester University and, locally, served on the May Queen committee and other bodies.

Duguids Ltd produced analysers for flue gases and Sydney is believed to have been on some of the sea trials of the Titanic, as some of his company's instruments were on board.

Carol believes the business closed and was finally disposed of on Sydney's death around 1969.

There is little evidence of its existence left today - in fact a house now stands on the site.

Carol's grandfather, also called William Pearson, and her grandmother, were caretakers at the former New Road Methodist Chapel, who

was opposite the old police station.

Sydney Duguid was connected by marriage to the family, marrying her father's aunt, Jessie Pearson. Her father - Carol's great grandfather, was also called William Pearson and owned a grocer's shop where Barclay's Bank now stands.

Carol said: "I have much history in common with the environs of Lymm. For instance, a significant number of my ancestors on my mother's side, were publicans. But that's another story!"

Among people who worked at Duguids over the years were Jack Roylance, Frank Perrin, Frank Whitelegg, Miss Moss and Mrs Cheatham.

Carol added: "We have not got many artefacts from the workshop - except I have an old laboratory sink in which I now grow garden mint!"

Anyone with information should email carol@markandcarol.co.uk

BROTHERSTON

I Fix Problems!

Electrical - Plumbing - Audio Visual - Joinery
Bathroom Problems - Kitchen Problems

Call Steven Brotherston on
07818 636 112
Email: steve@ston.co.uk



LYMM GARDEN CARE EST 1990

LAWN MOWING - Weekly / Fortnightly

Excellent mowers used

All aspects of gardening including:

**Hedge Cutting, Tree Pruning, Lopping and Felling
Lawn Feeds / Fertilisers**

Competitive Prices, call Greg Clarke on

01925 757069



JOHN PERCIVAL

BUILDER, EXTENSIONS & INDUSTRIAL WORK

- Experienced in all areas of building work from repairs, alterations, renovations and extensions
- Specialist advice and immediate estimates
- Accurate time schedules
- Registered with the federation of Master Builders from 1973 and listed on the Police Platinum Members Guide
- Guaranteed professional, quality work from a well established, reliable building company



Tel/Fax: **01925 755984**

Mobile: 07831 239612

8 Oughtrington View, Lymm, Cheshire

Web: www.johnpercival.co.uk Email: john@johnpercival.co.uk

carpe diem

WEB DESIGN, DEVELOPMENT & PRINT

Delivering creative web and print solutions since 1999, Carpe Diem have developed strong working relationships with clients of all sizes.

Website Development

E-Commerce

Branding

Print

SEO / PPC / Marketing

SMS / MMS / Email Campaigns

Hosting

DVD / Video Production

Product Photography

T: 01925 299 842

F: 0871 434 5371

E: info@cd-inc.co.uk

www.carpe-diem.co.uk

60 High Street

Newton-Le-Willows

WA12 9SH

P.E.T.S. ANIMAL HOTEL

Setting New Standards in Animal Care

- Hotel style living for your pets
- State of the art grooming salon
- Behaviour and training management
- Reliable dog walking and home care visits
- Unique, purpose-built indoor and outdoor Doggy Day Creche
- Pick up and delivery service

Viewings welcome

To arrange a tour please ring Fran Jennings on
07792 756 545 or 01925 750418

27 Barford Lane, Lymm, Cheshire WA13 0SH
www.petsanimalhotel.co.uk

B.A.S

Bespoke Architectural Structures Ltd

Transform your living space or work place with specialist glazing made to the highest standard. **Family based business** manufacturing, supplying and installing glazing systems to the domestic and commercial market specialising in sliding folding doors: Call us now for a **FREE no obligation** quotation.

Best quality and service assured!

www.b-a-s.co.uk
Tel: **01928 579957**

Unit 3, Sycamore Court, Manor Park, Runcorn. WA7 1RS

'Big Picture' back on show

THE 'Big Picture' which was a popular feature of the Lymm Festival Food Fest this year is back on show again - at Lymm Youth and Community Centre in Bridgewater Street.

Organised by local artist Jackie Marshall and a team of local artists, the picture, based on a Helen Bradley painting, has been "re-hung" in the club.

The artists who contributed to it, their friends and the general public can call to see the picture and also see how the old youth club building has been renovated by members of the Youth and Community Association.

The picture was erected in the club by members of the 3rd Lymm Scout Group.



Farmers's Market

A FARMER'S Market is to take place at Lymm Youth and Community Centre on Sunday, September 19, starting at 9am.

It is hoped it will be the first of a series of such events, taking place monthly on the third Sunday of each month.

There will be a range of stalls offering local and seasonal produce and refreshments will also be available.

Extra details can be obtained from Neville Davies on 01925 755757

Boost for children's charity

A CHILDREN'S charity which helps children with brain injuries, developmental delay and genetic conditions has been given a boost - by a man who cleans ovens.

Birchwood-based Brainwave will receive £1 every time Paul Clark cleans an oven. The donation is to celebrate a milestone for Paul's business - that of serving 3,000 clients in three years.


Former social worker Paul, aged 47, uses the Ovenu process to clean ovens using non-caustic products in the Warrington area.

He said: "It has been an incredible three years, building up the business in Warrington from scratch to where we are today.

"As well as looking to expand my business to other areas of Merseyside, I am also celebrating the 3,000 clean ovens landmark with a donation of £1 for every oven cleaned to the Brainwave charity, which has a centre in Birchwood."

The Brainwave centre at Birchwood was officially opened by the Countess of Wessex in November last year. The charity provides home based therapy programmes for children suffering from brain damage, cerebral palsy, developmental delay and other conditions.

REAL EARTH **ALL AT TRADE PRICES**



**NATURAL STONE TILES • WOOD FLOORING
BATHROOM SUITES • UNDERFLOOR HEATING
FURNISHINGS • FITTING SERVICE AVAILABLE
PORCELAIN TILES • INDIAN STONE PAVING**

Lymm Nursery • Rushgreen Road • Lymm • Cheshire • WA13 9PR
T: 01925 759 607 • F: 01925 758 699 • E: info@realearthuk.com

Review of polling districts

A REVIEW of polling districts and places is being carried out - and the borough council is particularly keen to hear the views of people in Lymm.

The review is based on feedback received after the May local and general elections.

Residents and councillors are being asked for comments or suggestions for alternative polling arrangements.

Details of existing arrangements and a map are now available to view in the Town Hall, Sankey Street.

The closing date to submit any comments or suggestions is Wednesday October 6 and proposals will be published from Tuesday October 19 onwards.

The council will then make its final decision for any new arrangements based on this feedback in December.

Anyone who wishes to make their views known should contact Electoral Services on 01925 442184 or email elections@warrington.gov.uk

Appeal allowed

A PLANNING inspector has allowed an appeal by a Lymm resident against the refusal by Warrington Borough Council to grant planning permission for a home extension.

He has ruled that the rear, first floor extension over an existing garage at a house in Longcroft Place would not have a significant effect on the street scene or the amenity of the area.

He acknowledged that the development would be contrary to the council's terracing code, in that a two metre gap between properties would not be retained at first floor level, but decided the aims of the code would not be breached.

A council spokesman said the inspector took a different view to the council and this showed the need to apply the code as guidance rather than strict policy.

Third annual 'B Fest'

THE third annual "B Fest" at Lymm's Jolly Thresher pub takes place on Saturday, September 25.

There will be music from up-and-coming bands, other entertainment, competitions, food and plenty of fun.

The event will raise money for the Diabetes Research Charity and Myeloma Blood Cancer Research - and organisers are hoping to beat last year's record £3,000.

Starting at 12 noon, the B-Fest is so named as it is in Broomedge, and features beer, bands and barbecue.

The Manchester Grammar School

A name recognised internationally

Whatever profession...

business, the law, medicine, the media, the arts or sport
you will find former MGS boys at the very top

Open Events

Saturday 2 & Monday 4 October

MGS – the school of first choice
for boys aged 7 to 18

Mike Atherton

Former England Cricket
Captain, Author & Chief Cricket
Correspondent for the Times

mgs
Founded 1525

The Manchester
Grammar School

Contact Kath Heathcote
0161 224 7201 ext 234
Old Hall Lane, Manchester M13 0XT
Full details at mgs.org

With an increase in sales, we currently have clients waiting to purchase. Ridgeway Residential is the right choice to sell your property quickly and efficiently.

Urgently Required Properties For Sale. Please call for a Free Market Appraisal Today

FOR SALE



17 Rushes Meadow, Lymm
A large modern detached property only a short drive to Lymm Village. The property comprises of entrance hall, lounge with double doors, dining room, family room, snug, downstairs W/C, large breakfast kitchen, utility, conservatory, 5 beds, 3 baths, Gardens to the front and rear. Parking for 3 cars.
£599,950



7 The Poplars, Lymm
A period property with stylish contemporary living. Comprises of a large living room, dining room, breakfast kitchen, cloak room/ W/C, 4 good bedrooms (en-suite shower room to the master) and family bathroom with walk in shower. The property is available immediately with no chain.
£475,000



2 Woodbine Road, Lymm
Attractive end modern mews in popular location comprising of entrance hall, large lounge, breakfast kitchen with door leading into the garden, two double bedrooms, two bathrooms, gas central heating, enclosed garden, garage and parking. Viewing recommended..
£194,950



Trimble House, 9 Bold Street, Warrington
A rare opportunity to purchase this three storey, spacious mid terrace, commercial building. Located in the heart of Warrington town centre. The building area is 248 m2. A prime location overlooking Palmyra Square.
OIRO £180,000

TO LET

Trimble House, 9 Bold Street, Warrington
Spacious commercial premises, kitchen & bathroom facilities, 248 Square Metres.
£1000pcm

Apartment 9 Chaise Meadow, Lymm
2 Bed Apartment, furnished
£550pcm

FOR SALE



78 Cherry Lane, Lymm
An attractive period property in sought after location. The accommodation is split on three floors, on the ground floor, entrance hall, lounge, family room, dining room, downstairs bathroom, internal space/utility, first floor 3 beds, family bathroom, second floor 2 double bedrooms, garden and garage.
£459,500



24 Manor Road, Lymm
Extended Semi Detached Property in sought after location only a short walk from Lymm Village. Briefly comprises of porch, large lounge, dining kitchen, utility, conservatory, 3 large bedrooms, 2 bathrooms, UPVC double glazed, garage with electric door, gardens front and rear. Must be viewed..
£399,500



19 High Leigh Road, Lymm
Well Presented Semi Detached, Three Bedrooms, Living Room, Dining Room, Kitchen, Newly Refurbished Bathroom, Front, Side, Rear Gardens, UPVC Double Glazing, Sought After Location, Viewing Recommended.
£189,950



50 Star Lane, Lymm
A well-presented terrace cottage with a rear garden. Briefly Comprises of entrance porch, entrance hall, lounge, dining room, fitted kitchen, 2 bedrooms and first floor bathroom. Off Road Parking. Viewing highly recommended.
£179,950

14 The Anchorage, Lymm

2 Bed end mews, furnished, available 23/09/10
£625pcm

61 Scholars Green Lane, Lymm

3 bed detached, furnished, available 01/10/10
£1,100pcm

TO LET

Due to the high demand in Rentals we require To Let properties in all prices. Call today, we offer competitive fees!

19 The Cross Lymm Cheshire WA13 0HR T. 01925 756931 E. sales@ridgewayresidential.co.uk

Resident slams 'eyesore' telephone exchange

A LYMM man has declared war on communications giant BT over the condition of the telephone exchange in Greenwood Road.

Pensioner Malcolm Brentford says the building – right in the middle of a residential estate – is blighted by rotting window frames, broken glass, flaking paint and overgrown vegetation.

There is even weeding growing out of the letter box.

He said: "It is an appalling building to put in the middle of a residential area anyway. But the least they can do is look after it properly.

"It has become a complete eyesore – an utter disgrace. Nearby residents have to look at it every time they look out of their windows. They should not have to put up with something like

this."

Mr Brentford has contacted BT and warned that he will send a dossier, complete with photographs, to BT's chief executive.

"After an exchange of emails I eventually got one saying the job had been done. But in fact, nothing has been done.

"The writer of the email either has a vivid imagination, or is grossly incompetent or hasn't even checked to see if the work has been done.

"Someone wants a rocket under them and if nothing is done soon I will asking the BT chief executive to do just that!"



Tablers back flood appeal

LYMM and District Round Table have donated £500 to the Pakistan Flood Appeal.

The Table – itself a registered charity which typically raises funds for local causes – decided to break from tradition and make the donation in response to the floods which have killed more than 1,700 people and affected a further 1.7m.

The UK has committed £64m in response to the disaster which began in August and the British public have donated more than £47m.

Chairman Dave Openshaw said: "Although we raise a lot of money for the local community there are times when the need is so great that we feel we should help out, wherever they are.

"So many people have been affected – including lots of children – and donating £500 to the emergency appeal for aid is the least we could do."

Anyone interested in raising money for charity as a member of the Lymm and District Round Table, visit www.lymmroundtable.co.uk or contact Chris Stephens on 07932 573 956 or info@lymmroundtable.co.uk

50% OFF
your first course of lessons with this advert!
Terms & Conditions apply. Available for Tel save bookings only. Expires Oct 31st.

more people more active more often
www.traffordleisure.co.uk

Find us on Facebook

swim well

LEARN TO SWIM

SWIMMING LESSONS

Partington Sports Village
CLASSES AVAILABLE

- Termly Courses for under 16's
- Private One 2 One Lessons
- Intensive Holiday Courses
- Adult Lessons

Call now to book:



0161 777 4222

Partington Sports Village

Chapel Lane . Partington . M31 4ES

THE LOOK

HAIR & BEAUTY BY DESIGN

now exclusively an
AVEDA
salon & spa

The newly renovated salon area has been extended to accommodate extra styling stations and to be more spacious for your comfort. Our new spa rooms have been sound proofed to enhance the peace tranquility that our spa experience offers.

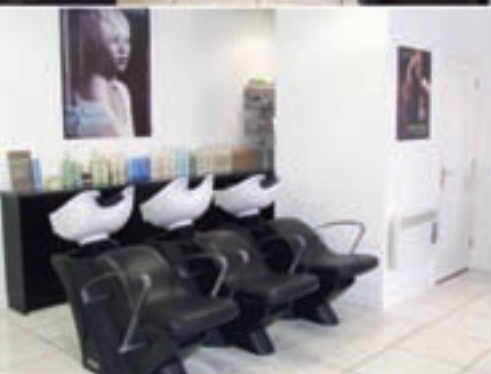
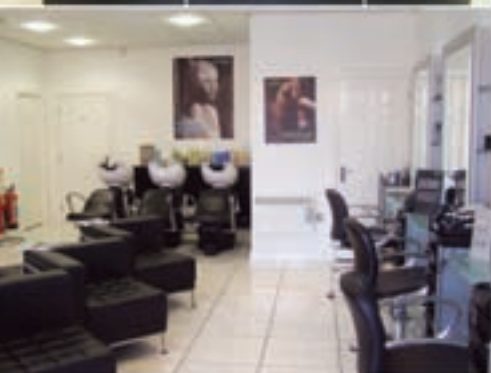
A full range of Aveda treatments are available from facials to massages to hair colours and we also

offer a complimentary head or hand massage during your visit to us. The full range of Aveda products are available to buy in the salon or online at www.thelookonline.com

We are the only Aveda salon within 15 miles and because we aren't situated in the centre of Lymm, customer parking is never a problem.

The Look is supporting Breast Cancer Care with a 'pink week' 5th-10th Oct. Sun 10th Oct we'll be participating in a 'bed push', wearing fancy dress & raising lots of cash!

There will be lots of other activities happening in our 'pink week' - Ask in salon for more details!



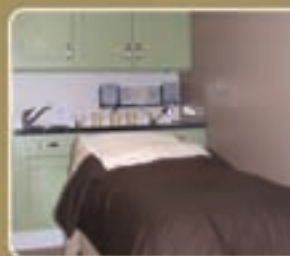
we are now an **AVEDA** the art and science of pure flower and plant essences
exclusive pure privilege salon

Join us at our Launch Evening
Thurs 23rd Sept, 7-10pm

Everyone is welcome to come along to celebrate & and help us to raise money for the Children's Adventure Farm Trust (CAFT). Fantastic raffle prizes on the night!

- Enjoy complimentary drinks & canapés
- Taster treatments & introductory offers
- Consultants to offer advice
- Visit our new tranquil spa rooms

reserve your free place
01925 757932



Search 'The Look salon' for promotions www.thelookonline.co.uk Unit 2-3 Chaise Meadow, Heatley Mere, Lymm, WA13 9UP

Opening times: Tues 9am-6pm, Wed & Thur 9am-9pm, Fri 9am-6pm, Sat 9am-5.30pm. Closed on Sun & Mon. **FREE CUSTOMER PARKING.**

Bookings can be made online at www.thelookonline.co.uk or through our facebook page

Rosebank Naturegarten, Pepper St, Lymm
a dream come true for you and your child.



- Home from home
- Extensive grounds
- Outside learning days
- Early Years/flexible sessions
- Full Day Care
- Children from 2½ years

Did you always want to build dens, explore, do woodwork and gardening?
...make sure your child has a head start and a childhood to sing about with a setting that gives them real space to develop, learn and play.



Our new Scandinavian Log Cabin is the natural choice for your child with its custom design and outside areas. Most of all we really do cater for children's individual needs with all play being led or directed by qualified teachers. *'The diverse curriculum offers opportunities for children to develop their skills and find their strengths' (OFSTED)*

Up to 15 hours per week may be FREE using Early Education Grants for 3 and 4 year olds.

We can also take babies and toddlers at The Rosebank Centre, our other Pepper Street nursery, which focuses on their specific needs.

Phone Sadie Hopley on 758959 to come and explore

Villagers keep

VILLAGERS again turned out in force to keep alive the ancient tradition of rushbearing which dates back to medieval times.

The annual Rushbearing Festival originates from ancient times when carts of rushes made their way to the church for use as floor covering.

Bullrushes and garlands were paraded through the village as part of the festival.

Town Crier Peter Powell started proceedings where he was joined by members of Lymm Parish Council and other community groups.

A procession wended its way through the village from Pepper Street to St Mary's Church, where a special service was held.

Rushbearing owes its origins to the procedure of changing rushes used

on the church floors, in the days before carpets, just before harvest, to symbolise a healthy crop.

At one time, Rushbearing Day was virtually a Bank Holiday in Lymm, with shops and offices closing.

But in more recent years it has always been held on a Sunday.

The event is organised each year by local barrister Christopher Limb.

Front cover pictures shows LR Fiona MacPherson aged 12 and Georgina Richards aged 10 representing Lymm Youth Club and Community Centre and Lymm Riding school in the Rushbearing Procession.

For more pictures visit www.lymmlife.co.uk



Lymm Morris in procession

Strives Team of Trainers CHRISTMAS *world*

Christmas Extravaganza Evening

Thursday 14th October

DOORS OPEN 6PM - 9PM FREE ADMISSION - ALL WELCOME

Join us for a **FANTASTIC FESTIVE SHOPPING EVENING** as we launch our stunning Christmas 2010 displays

• festive food tastings • live music • craft demonstrations • special menu in Topiary Coffee Shop • special offers and best buys • plus much, much more...

RECEIVE A FREE £5 GIFT VOUCHER* WHEN YOU SPEND £25 OR MORE ON THE EXTRAVAGANZA EVENING

*£5 voucher valid from 1st - 30th Nov only

High Legh Garden Centre
High Legh, Knutsford Tel: 01925 756991
On the A50 between Warrington and Knutsford

Edgewood Interiors
Kitchens • Bedrooms • Bathrooms • Building Projects

FREE Design and Quotation Service



We design and build beautiful:

- Kitchens
- Bathrooms
- Bedrooms
- Loft conversions
- Garage conversions
- Extensions

Open 7 days a week

Why not give us a call on **01625 261750** or **07835 920922** and see what we can do for you?

Tanyard Farm • 80 Rushgreen Road • Lymm • WA13 9PR

tradition alive



The Town Crier Peter Powell leads the Rushbearing Procession



First Lymm Brownies left, Katie Masnyk aged 9 and Megan Swift aged 7 with their World Cup floral arrangement



Eileen Mundy of the Lymm Local History Society with her Rushbearing Arrangement



Left, Fiona MacPherson aged 12 and Georgina Richards aged 10 represented Lymm Youth Club and Community Centre and Lymm Riding school



Lymm Jubilee Women's Institute with their Rushbearing Display

St Mary's Pre-School

look forward to welcoming you into their family

*Pop in for a visit and see for yourself what fun we have learning through play....

- Craft
- pond dipping
- mark making
- role play
- links to all local schools
- from age 2½
- experienced staff
- outdoor play area
- parking
- small world
- planting & gardening
- Free places for 3+ year olds*

Call 07947 692003

www.stmaryspreschool.co.uk

*Sessions during school term times are Mon, Tues & Fri 9.15am-12.45pm, Wed & Thurs 9.15am-12.15pm

*nursery grant provided by Warrington Borough Council, rules apply

Odd, but not everyone knows we do tradesman insurance.

We do.

Call 01928 735967 for a quote or pop into the office to talk to Kevin at NFU Mutual Office, 123 Main Street, Frodsham WA6 7AF



Agent of The National Farmers Union Mutual Insurance Society Limited. We do right by you

Xross interiors

16 the cross lymm cheshire wa14 0hu

01925 758298

xrossinteriors@live.co.uk

Come and see our Home and Gifts department

curtains • blinds • carpets
vinyls • poles & tracks • giftware
design and consultation

Dunham Window Cleaners

See the world through Dunham clean windows

Local professional window cleaners with over 20 years experience

Services also provided:

- Reach & Wash system for those hard to reach areas
- PVC • Roof • Conservatories
- Gutters all cleaned
- Outside of properties cleaned
- Driveways/Patios Jet Washed
- Wheelie Bins Cleaned
- Domestic Cleaning
- House Clearances

Call 01925 752159 or Steven on 07874 118219 Glynn on 07723 507840

E: dunhamwindows@hotmail.co.uk www.dunhamwindows.co.uk









Tabley House Nursing Home

Providing Excellence In Care of the Elderly

Including:

Nursing & Residential Care, Palliative Care
Post Operative Care, Convalescence Care, Day Care,
Respite Care, Care of the Elderly with Dementia



For further information or to arrange a viewing contact:
Matron Karen Lynskey or Deputy Matron Liane Topham

Tabley House, Tabley Lane, Knutsford, Cheshire, WA16 0HB
Telephone: 01565 650 888
www.tableycare.co.uk

Pre-school is 'good' says inspector

A LYMM pre-school has been judged "good" by an Ofsted inspector.

The inspector was particularly impressed by the leadership at St Mary's Pre-School, in Crouchley Lane, the support from the staff and the strong partnership with parents.

The outdoor play area was commended alongside the staff's skill in "delivering a wide range of activities that are both meaningful and challenging to children's thinking".

Also highlighted in the report was the children's enthusiasm for the vegetable garden and their descriptions and knowledge of the salad they had grown and tasted at snack time. The inspector also drew attention to the children's delight in craft activities, in particular t-shirts they made to wear at the end of term "pirate party".

Supervisor Lisa Bates said St Mary's were delighted with the "good" judgement.

She said: "We are continually striving to try new ideas to maximise the benefit to the children and meet all the requirements of EYFS (Early Years Foundation Stage)".

This was also identified in the Ofsted report; "Through self evaluation, the setting is aware of its development needs and demonstrates a strong capacity to continuously improve."

More information is available at the website www.stmaryspreschool.co.uk



Classic Home Improvements

Established 1987

Fireplaces | Kitchens | Bathrooms | Stoves
Granite Worktops



upto **50% OFF**
Kitchens

Arcadia Kitchen Range

8no - full colour 19mm base & wall units
inc Doors, handles & cornice.

40mm Laminate worktops
1.5 Bowl Stainless Steel Sink & Taps

Only £ 2400 Inc Fitting

Subject to survey



Woodburning Stoves
from **£399**



upto **50% OFF**
Bathrooms

Jasmin Bathroom Suite

Basin & full pedestal,
Basin mixer tap with pop up waste,
Close coupled pan & cistern inc duel
flush & soft close seat.
Luxury shower bath inc shower screen &
bath/shower mixer taps.

Only £ 1595 Inc Fitting

Subject to survey

Classic Home Improvements

61-67 Knutsford Rd,
Warrington
Cheshire,
WA4 1AB

Tel : 01925 445455
www.classichomeimprovements.co.uk

GRANITE WORKTOPS SUPPLIED & INSTALLED
Call 01925 445455 for a free estimates

FIVE STAR NILE CRUISE ONLY £879



A HOLIDAY OF A LIFETIME – enjoy every luxury whilst experiencing the wonders of the world's greatest open air museum
Includes: All Meals, Drinks & Ten Excursions

MONDAY: Arriving in Luxor

Fly direct from Manchester to Luxor, a mesmerising city of ancient monuments, tombs and temples. A transfer is included to the five star Ms Grand Rose for your seven night cruise

TUESDAY: Western Thebes

Visit the resting place of a succession of mighty Pharaohs in the Valley of the Kings, littered with intricate tombs – beautifully coloured and decorated with hieroglyphics. Discover the Temple of Hatshepsut, the famous female pharaoh and see the gigantic statues of the Colossi of Memnon.

WEDNESDAY: Luxor

Visit the staggering temples of Luxor and Karnak. The Luxor temple was erected by Amenophis III for Mut, the wife of the God Amun. At the vast open air museum of Karnak, you can marvel at the Great Hypostyle Hall, with its 134 columns. In the afternoon sail to Edfu via Esna Lock

THURSDAY: EDFU & KOM OMBO

During this day's sailing, you will visit Edfu home to the wonderfully preserved Temple of Horus. Return to the Grand Rose for lunch and continue towards Aswan via the stunning sight of Kom Ombo where you can visit the Sobek Temple built in 250BC.

FRIDAY: Aswan

The morning is spent seeing the Philae Temple, dedicated to the Goddess Isis and set like a jewel on an island of Agilika. Experience the High Dam, built during the 1960s to save Egypt from devastating floods. After lunch enjoy a felucca ride along the Nile before returning to the Grand Rose for dinner.

SATURDAY: Aswan & Surrounding Area

Free day to enjoy the facilities on board or make the most of the optional excursions - you can take a trip by air or bus to world famous Abu Simbel. This great sun temple was built by Ramses II, who had four gigantic statues of himself hewn into the desert mountainside. For an evening treat, experience the Sound and Light show at the Philae Temple.

SUNDAY: Cruise to Luxor

A leisurely morning sailing to Luxor via Esna. Enjoy the fascinating vistas of the Nile unfold before you - as you relax and enjoy the lovely amenities on board. With the evening comes the option of visiting the Sound and Light show at Karnak.

MONDAY: Disembarking

After breakfast on board, transfer to the airport for your flight home.

PRICE INCLUDES:

Direct flight from Manchester
Outside cabin with view
Transfers
10 excursions
Buffet breakfast lunch & dinner
Snacks
Afternoon tea, coffee & cake
Unlimited soft drinks and local alcoholic beverages
Inflight meals
20 kgs of baggage



MS GRAND ROSE

Elegant and sophisticated, the MS Grand Rose is one of the most beautiful ships sailing on the Nile and is the height of understated luxury.

FACILITIES

Swimming pool • Large sun deck with loungers • Restaurant • Disco lounge bar • Sun deck bar • Lobby with reception
Souvenir shop • Fitness equipment
Table tennis • Billiards
Evening entertainment

CABINS

All 60 exterior cabins and 2 suites are air conditioned and equipped with shower and WC, satellite TV, telephone, hairdryer, minibar & safety deposit box

FOOD AND DRINK

Buffet breakfast, lunch, dinner, afternoon tea, coffee, cake, snacks - unlimited non alcoholic drinks and local alcoholic beverages



**BOOK BEFORE 15 OCTOBER 2010 AND RECEIVE
OFF PER BOOKING £100**

Depart 10 January 2011 – 7 nights – other dates available – prices on request

Prices and discount are based on 2 people sharing a double cabin and are subject to availability and change. Please note the itinerary may be subject to local operational or weather conditions.

Retail agent for Atol Holder

**Call Mariner Travel on:
01925 750 619**

Anchor House, 40 Booths Hill Road, Lymm, Cheshire, WA13 0DL
www.marinertravel.co.uk

PRIMROSE HILL NURSERIES

WALLFLOWER, PANSIES, BULBS & MANY MORE PLANTS FOR AUTUMN PLANTING AND OUR RANGE OF SEASONAL HANING BASKETS & PATIO POTS

DISCOUNTS FOR QUANTITY

Caring Family Business

Open 7 days a week

Warrington Road, High Legh, Knutsford, Cheshire WA16 0SQ

Telephone
01925 752635

Art in the Garden helps worthy causes

THE annual Art in the Garden outdoor exhibition at Leckonby Cottage as part of the Lymm Festival helped raise funds for various worthy causes.

The generosity of visitors and volunteers made the whole event a very worthwhile activity.

Frances Done, Chair of the Youth Justice Board, opened the event when £175 was raised by the Women's Co-operative Guild selling refreshments in aid of a Womens Refuge in Warrington.

On the Sunday parents from Little Foxes Pre School raised £350 serving refreshments to a very busy gardenful of visitors.

Then on the Tuesday Venture Arts, who always exhibit work, came and viewed their pieces along with all the

other exhibits. Proceeds from gate entrance fees paid for them to go on a narrow boat brought specially from Runcorn by the Adventure Canal Boat Trust.

Amnesty International collected £300 on the final weekend with the sale of plants and teas.

Tranquility

"The Art in the Garden has become a wonderfully inclusive event," said owner and organiser Su Williams "and its is great to see people coming back year after year and even several times in the week just to enjoy the peace and tranquility of the garden and the art. The fact that we are able to help so many causes as well as providing some financial support for the Festival is a bonus."

The highlight for many was the transformation of the twelve foot stump of a cedar tree into a wonderful garden sculpture representing a tree goddess holding a bird aloft.

The work was produced by chainsaw artist Lee Farragher while garden visitors watched in fascination. The sculpture should survive for many years as a lasting reminder of the glorious Summer of 2010.

Meanwhile "The Tights for Africa appeal" has been well supported and a very big packing case full of

donated tights, costing £211, has been sent to the Addis Adaba Fistula Hospital in Ethiopia.

As is now almost a tradition a large barrel of clothes, cottons and children's books have also been sent to a village in Sierra Leone.

In March Su Williams was pleased to meet Glenys Kinnock, who was then the Minister for Africa, and tell her about the donation of tights from the women of the Lymm area and how they are being used in the care of women after surgery.

Su, who is pictured with Glenys, added: "We are pleased that the exhibition was so well supported by artists and visitors and we hope that our fundraising continues to make a difference to people less fortunate than us."



Fryer's
More than a
GARDEN CENTRE

Look what a little birdie told us...
Fryers stock a flock of birdcare products

The perfect addition to any beautiful garden is the arrival of equally beautiful birds. But attracting them is another matter altogether. So it's important to choose products specially created to appeal to our native species and the many new and glorious birds that travel to our shores as the climate steadily grows warmer. At Fryers you can see a full range of seeds and feeds, feeders and birdbaths. You'll also find a huge variety of other 'wildlife' products including frog habitats, ladybird houses...even a hedgehog house! In fact everything it takes to give nature a helping hand. Birdcare. Yet another good reason why garden lovers land at Fryers.

cafe
AT FRYERS
open every day

FREE tea or coffee
for two with this advert

GARDMAN Wildlife

On the A50 one mile north of Knutsford
Telephone 01565 755455 www.fryers.co.uk

ANOTHER OUTSTANDING YEAR AT PRIESTLEY

OVER
99% +
PASS RATE
6 YEARS RUNNING

100% PASS RATE IN 37
A-LEVEL SUBJECTS

OVER 72% OF GRADES AT
A* TO C

100% PASS RATE IN ALL
3TEC NATIONAL DIPLOMAS

60% OF GRADES AT
DISTINCTION LEVEL

JUST SOME OF OUR BEST
INDIVIDUAL SUCCESSES

VICKI CLAMPITT - William Beamont,
A*A*A*A - Art Foundation (Priestley)

SIMON CRANE - Lysander
A*A*AA - Loughborough

NICOLA DELANEY - Bridgewater
A*AA - Leeds

RYAN GOODWIN - The Heath
A*AABB - Manchester

VICTORIA FLEMING - Sir Thomas Boteler
A*AAA - Cardiff

SUZANNE HELLIWELL - Great Sankey
A*A*A*B - Durham

JADE KIDDELL - Birchwood
3 Distinctions (BTEC), A*
Art Foundation (Priestley)

RORY McDONALD - Bridgewater
A*AAA - Manchester

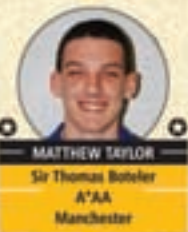
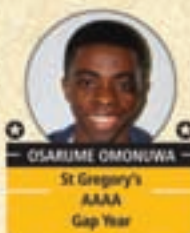
FOR SEPTEMBER 2011 ENTRY

SIXTH FORM OPEN EVENINGS

WEDNESDAY 10 NOVEMBER 2010

THURSDAY 11 NOVEMBER 2010

THURSDAY 27 JANUARY 2011



WELL DONE, ALL THE CLASS OF 2010

LOUIS PICKERING - Woolston
A*A*A*A - Manchester

JENNIFER REEVES - Cardinal Newman
AAA - Warwick

LUCY SMITH - Cardinal Newman
A*A*AA - TBC

WARREN RICHARDS - Fairfield High
A*AA - Liverpool

RACHEL SANDERS - Birchwood
AAAB - Liverpool

ELLIE VIDEAN - Lymm
3 Distinctions (BTEC), A - Leeds College

SOPHIE WILLIAMS - Halton
AAA - Gap Year

PRIESTLEY ◆◆◆ COLLEGE ◆◆◆

Loushers Lane, Warrington, WA4 6RD

Tel. 01925 415415 / Fax. 01925 413887

www.priestley.ac.uk



Limited places still available on some programmes, phone 01925 415415 to book an appointment.

Statham Lodge Hotel

Squires Bar Meals

Lunchtime Lite Bites & Bar Meals

Served Monday - Friday; Noon - 2pm

Afternoon Tea

Served Monday - Friday; Noon - 5pm

Bar Meals & Chef's Specials

Served Every Evening; 6pm - 9:15pm

Sunday Evening Offer

Dine with us on a Sunday Evening in
September & October & receive a £5.00 voucher
for Squires bar meals on your next visit

Terms & Conditions

- Offer only available on production of this coupon
- Minimum transaction of £25 required on food & drink in the Squires Bar
- Voucher valid until 30th November 2010

Warrington Road, Statham, Lymm, Cheshire, WA13 9BP

Tel: 01925 752204 www.stathamlodge.com

JOLLY THRESHER



Higher Lane - Broomeedge - Lymm, Cheshire

Hallowe'en Fancy Dress Party Saturday 30th October

*Bookings now being taken for
Christmas Parties*

Party Nights 9th & 16th December

*Jonny, Mark, Olivia and staff welcome you all to the
Jolly Thresher, our newly refurbished local pub with
fabulous restaurant, outside terrace
and huge beer garden.*

*Good home-cooked food from our new menu, plus fine
ales and wines, are served every day. Enjoy a great
atmosphere and friendly service in our family-run pub.*

Please call for reservations

01925 752265



GET 20% OFF OUR MENU



The Spread Eagle is proud to present our John Willie's pie and ale house menu. It offers Great British pub food, with weekly specials, all freshly prepared. **Bring this advert with you to receive 20% off your bill (except Sundays)**

On 16th October we are running a Pub Idol Karaoke competition tell us if you want to join in.

30th October a Halloween Ghoulish evening with disco and late bar
Spread Eagle, 47 Eagle Brow, Lymm, Cheshire, WA13 0AG
Tel 01925 757467 Email spreadeagle@jwlees.co.uk

Terms & Conditions: 1. One advert is valid for up to six people including children. 2. 20% discount applies to your total bill, including food and drink. 3. Offer is subject to availability and until 29th October 2010



BE YOURSELF

The Lymm Hotel *events*



Hallowe'en Murder Mystery

Saturday 30th October 7.30pm

£23.50 per person, includes a 3 course meal

Prizes for best fancy dress

£49.50 per person to include

accommodation and Full English Breakfast



Wedding Fayre

Sunday 10th October

Wedding Specialists at hand to advise and offer unique ideas.

Great Packages throughout 2011 & 2012

Wedding Cruise Offer - Book your wedding in 2010 for 2011 and receive a 7 day cruise for your honeymoon, compliments of Macdonald Hotels!

Christmas Brochures Now Available
Party Nights • Christmas Day Lunch

PLEASE FEEL FREE TO CONTACT US TO MAKE AN
ENQUIRY OR TO MAKE A RESERVATION.

Tel: 01925 752233

Whitbarrow Road, Lymm, Cheshire WA13 9AQ

Email: general.lymm@macdonald-hotels.co.uk www.macdonaldhotels.co.uk/lymm

Dining Out *with* Lymm Life

at The Golden Fleece

THEY make no secret of it at Lymm's Golden Fleece. They aim to provide value-for-money meals for the family - and they are hitting their target.

Two main courses for £9 is incredible value and it's available all day, every day with a range of around 20 dishes to choose from.

We were able to tuck into a three course meal for two with a very acceptable bottle of wine for just £23.69 - quite astonishing value.

Landlady Diane Jennings makes no bones about it: "We are a community

pub, in the heart of the village and providing good pub food for all the family at a price they can afford."

The number of people sampling the fare is testimony to her success. The newly refurbished pub is buzzing with activity

Our meal started with breaded mushrooms in a barbecue sauce and chicken goujons in sour cream, both attractively presented and in generous portions.

Our main courses - two for £9 - were a seven ounce rump steak with chips, peas, grilled tomato, mushrooms and onion rings and a

plain chicken breast with chips and peas.

The range of dishes we had to choose from included Scampi, all-day breakfast, Chicken Tikka Masala, Beef Lasagne, Fish and Chips, liver and onion and 10 ounce gammon steak.

There are other meals to choose from, not in the "two for" range, including curry dishes, grilled salmon, mixed grills, surf and turf and

- on Sundays - roast dinners available all day at £4.99. Vegetarian diets are also catered for.

A good choice of desserts rounds off the meal. We sampled a chocolate, pecan and walnut rocky road brownie and rhubarb crumble with custard but other options were treacle sponge, ice cream sundae, Bramley apple pie and New York style cheesecake.



Bears Paw Country Inn & Restaurant

New taking bookings for Christmas Fayre
Three Course Menu £19.95
Christmas Day Five Course menu £49.95

Join our Birthday Wine Club for a free bottle of wine on your birthday, and special offers around the year.
 Pick up your card in the pub.

Early Bird menu available Mon - Fri
 6pm till 7pm **Two Course £9.95**
Three Courses £12.95

Also available Sunday Lunch Set Menu
 12pm till 3pm **Two Courses £9.95**
Three Courses £12.95



*Looking forward to seeing you soon
 Jason, Melanie and all the staff
 at the Bears Paw*

Tel: 01925 752573 Warrington Road, High Legh

The Venue

Thirlmere Lodge, Rectory Lane, Lymm WA13 0AQ

Discounted drinks all night Monday
Our famous 'Open Mic' Night every Tuesday from 9pm
2 for 1 cocktails every Wednesday
Live acoustic music every Thursday
Rachel, our resident pianist every Saturday, 7-9pm
Quiz Night every Sunday, starting at 8pm

Late Bar til 12pm Thursday, Friday and Saturday

Happy Hour
 Sun-Thurs 6-8
 Fri & Sat 5-7

Available for private functions every afternoon and all day Sunday

Great selection of Wine and Draught Beers from around the world:
Black Sheep Carling Boddingtons
Thatchers Cider Amstel Peroni Guinness

Now serving Freshly Cooked Pizzas from Elmas Restaurant - Served Every Night

Wi-Fi Hotspot
 Come along and get online for FREE

Visit our website:
www.thevenue.lymm.co.uk



Tel: 01925 756393

A very warm welcome to

THE GOLDEN FLEECE

Book your Christmas party Now!
Newly refurbished private function room

The Narrowboat Bar



AVAILABLE FOR PARTIES DAY OR EVENING WHATEVER THE OCCASION
 Business Meetings and Lunches • Use of the Large Screens and WiFi
 Christenings and Funerals

Sky Sports 3D
 All major Sky Sports and ESPN games shown

Bookings now being taken for the festive fayre menu

Tel: 01925 755538 The Cross, Lymm, Cheshire WA13 0HR

School celebrates record breaking exam results

STUDENTS at Lymm High School achieved a stunning 63% of grades A*-B at A level which represents an all-time record for the school.

The new, very challenging, A* grade was awarded on 43 occasions and all Sixth Formers gained University places of their choice.

Particular congratulations to the following students who are off to Oxford or Cambridge:

Jose Waterton A* A* A* A* A* A* ,
Lindsey Caldwell A* A* A* A* A* A* ,
Eleanor Morris A* A* A* A* A* ,
Iain Carson A* A* A* A B B and Kim

Copland A* A* A* B.

The school also celebrated another school record with their GCSE results with 76% achieving 5+ A*-C including English and Maths (previous school record 73% in 2009).

Meanwhile 95% achieved 5+ A*-C while 98.5% achieved 5+ A*-G.

Some of the exceptional results included:

Charlie Brittlebank 8 A* + 1 A ,
Tom Ferguson 8 A* + 1 A , Peter

Booth 7 A* + 2 A, Sam Butler 7 A* + 2 A, Heather Jones 7 A* + 2 A, Christopher Jones 7 A* + 1 A,

Jennifer Caddick, 6 A* + 3 A. Rebecca Cuffe 6 A* + 3 A, Sam Heward 6 A* + 3 A, Lauren O'Neil 6 A* + 3 A, Devon Richardson, 6 A* + 3 A, Yasmin Toft 5 A* + 4 A,

Katie Ashcroft 4 A* + 5 A,, Katrina Caldwell 4 A* + 5 A, Ismaeel Hussain 4 A* + 5 A, Samuel Trotter 4 A* + 5 A.

Angela Walsh, Headteacher, said: "Congratulations to all our students for their exceptional performances this year. This is a tribute to the hard work of our students and staff. Well done!"



Lindsey Caldwell and Kimberley Copland and Joseph Waterton celebrating their A Level results.

Rural lane must be restored

BOROUGH Council chiefs moved swiftly when residents complained about unauthorised work being carried out by a contractor in Booths Lane, Lymm.

Work started on the installation of new, kerbed accesses to fields and nearby residents complained the development was damaging the rural character of the area.

Council officers visited the scene and the contractor agreed to suspend work.

Coun Sheila Woodyatt said: "In planning terms the new accesses

benefit from agricultural permitted development rights so no enforcement action can be taken.

"From the highway point of view, however, a permit is needed to carry out such works."

Coun Woodyatt said following talks between the highways department and the landowner, the contractor was instructed to restore the lane to its original condition.

"If he doesn't, the council will do the work and charge him for it," she added.



Cafe Salar
Restaurant & Bar
8 The Cross,
Lymm
01925 754444



Open 7 days

BREAKFAST LUNCH COCKTAILS DINNER

New Autumn Menu
Including our Cafe Salar 'All Inclusive Special'
All inclusive menu available Sunday 1pm - 5pm
Monday to Thursday 4pm - 6pm

Glass of bubbly on arrival
A bottle of house wine*
2 courses from our 'special Salar Menu'
For the all inclusive price of just

£18.50 per person*

* excluding house champagne and sparkling wines - min 2 pers per table

LIVE MUSIC AT CAFE SALAR EVERY SUNDAY
from September 26th
1pm till 5pm

WWW.CAFESALAR.CO.UK



Coming soon to
24 The Cross, Lymm

First 5 Properties we sell
will be at only
0.5% commission

Phone: 01925 759042

* Sole Agency only. If you have already instructed another Estate Agent you must check your terms and conditions to avoid paying 2 fees.

After school club is 'outstanding'

CHERRY Tree Primary School's Out of Hours Club, Lymm, has been judged "outstanding" by Ofsted - the Office for Standards in Education.

An inspector who visited earlier in the summer says the club, which provides early morning and late afternoon provision for more than 50 youngsters, provides an outstanding opportunity for children to learn and develop.

The needs of each child are exceptionally well catered for. Leaders and staff are committed to self-evaluation and recognise that this has been key to driving forward recent improvement. Children are safeguarded extremely well and their social and welfare needs are fully met. The setting is supported professionally by the main school and other networks, where best practice is shared. The club enjoys the full confidence of parents and shows excellent capacity for sustained improvement.

The inspector says the club is extremely vigilant about safeguarding matters.

Accommodation is safe and secure and there is meticulous recording of children's attendance and departures.

Staff are always looking for ways to improve, drawing heavily on the views and opinions of parents, staff and the children themselves. Managers recognise the need to use self-evaluation more systematically in order to sustain ambitious targets.

Curriculum planning is a real strength, reflecting all areas of learning.

Staff liaise with teachers from the main school and this ensures that

activities are closely aligned to and complement children's learning during the school day. This exceptional practice is seen by parents to be important.

Children express themselves well and staff help to extend their vocabulary as they talk about activities. Behaviour at all times is

outstanding.

Children respond enthusiastically to modelling and construction materials and are keen to take an interest in the range of books available.

The children appreciate snack time when the emphasis is on healthy food.

A significant number of parents comment that their children sometimes do not want to leave at the end of the session.

Community centre 'take over' bid

A NUMBER of local councillors have pledged backing for a bid by the local community to take over Lymm Youth and Community Centre.

Members of Lymm Youth and Community Association are bidding for a Community Asset Transfer - a scheme under which a facility can be transferred from a local authority to a local community for independent management.

The community association has been fighting for some time to secure the long term future of the premises in the village centre.

The association has secured support from the Asset Transfer Unit which will take the form of five days free consultancy designed to offer guidance through the Community Asset Transfer process.

The fight to save the centre has also come to the attention of the Government, with Lord Nat Wei, David Cameron's special advisor on the Big Society taking a personal interest.

On hearing about this national support, Coun Sheila Woodyatt, the borough council's executive member for Children and Young People, said: "I am delighted to hear it and do hope the project meets the criteria."

Coun Bob Barr, executive member for planning added: "This is very encouraging news as it will enable the youth club to resolve outstanding issues, once and for all, and to establish the terms for a Community Asset Transfer. I welcome both."

Association chairman Steve Griffiths said: "This is indeed excellent news. The centre is buzzing with vibrancy and there is a great deal of excitement at the prospect of becoming a focus for community activity in Lymm and South Warrington as part of the Big Society agenda."

5 YEAR WARRANTY
ON OUR VIKING RANGE OF LAWN MOWERS

For full sales and service of STIHL & VIKING products.

Opening Times:
Mon-Fri 8.30am-5pm
Saturday 8.30am-1pm

Tel: 01925 740217

DUTTONS POWERWORLD

The Smithy, Chester Road, Daresbury, Warrington WA4 4AJ
www.duttonsmowerworld.co.uk

UNIPART

CAR CARE CENTRE

FREE Local Pick-up & Drop Off Service

AUTOSAFE
Quality Assured

Agden Park Motors

Park Garage A56, Agden Brow, Lymm

5 Star
workshop facilities
for servicing and repair

Over 300
tyres
at competitive prices!

MOT Testing
petrol & diesel

BODYSHOP
01925 752235

BIG ENOUGH TO COPE . . . SMALL ENOUGH TO CARE!

AIR
CONDITIONING
REGAS/SERVICE

Contact ALLAN or GEOFF on 01925 752447

Shop Local

Welcome to our special feature which is aimed at encouraging our readers to support local businesses. Any local business wishing to feature in future editions please contact us on 0800 955 5247. Please mention this publication when responding to an advertiser.

Sophie's KITCHEN 

NOW OPEN
Monday - Sunday
9am - 5pm
Free WiFi

Exciting menu using fresh and locally sourced produce
Fair Trade Coffee & Hot Chocolate

Serving Breakfast, Lunch, Light Snacks, Afternoon Tea, Coffee & Cakes

HALLOWEEN CRAFT PARTY SUNDAY 31st OCTOBER
9.30-11.30 or 2.30-4.30 Fancy Dress, pumpkin carving, apple bobbing, and lots more scary things! **BOOK NOW!** Limited places

Tel: 01925 753718 or 07957 325710 Email: info@sophieskitchen.co.uk
Lymm Nurseries, Tanyard Farm, 80 Rushgreen Road, Lymm WA13 9PR

elmas  **01925 756049**

MEDITERRANEAN CUISINE

www.elmasrestaurant.co.uk 2 Pepper St, Lymm WA13 OJB

Newly opened following a bar and dining extension!

★★★★★
Award for Hygiene

Breakfast, Lunch & Dinner Menu available
or just call in for coffee or a cocktail.

Open 11.30-22.30 Mon to Fri and 11.00-22.30 Sat and Sun



Lymm Electric & Hardware
EST 1974

Electrical Goods
Repairs • Rewires
Alarms • Security Lights

NICEIC approved electrical contractors

Dyson/Vac repairs & Service

All work guaranteed

01925 755252
12 Bridgewater Street, Lymm, Cheshire

SWEENEY TODD
TRADITIONAL BARBER

No Appointment Needed

OPENING TIMES:

Monday	9-5:30
Tuesday	9-5:30
Wednesday	9-5:30
Thursday	10.30-7:00
Friday	9-5:30
Saturday	9-2:00

Keep your carbon footprint down and use your local barber!

TEL: 01925 751478 www.lymmbarber.co.uk
26 THE CROSS • LYMM • WA13 0HU

Cutting Edge 

Sharon and her team provide quality hairdressing for both men and women in a friendly salon with easy free parking. Sharon provides gentlemen's and boys cuts through to ladies and girls hairdressing including a full range of colour treatments.

- Full head foils inc. Cut & Finish from £59
- Bridal Hair & Party Hair from £25
- Cut & Finish from £23
- Gentleman's hair cut from £5
- Children's hair cut from £7

Ring to make an appointment 01925 752735
77 Whitesands Road Lymm WA13 9U

Elm tree
Financial Services Ltd
Independent Financial Advisers

We firmly believe that our clients need to receive the right service, at the right time.

Investments • Pensions • Mortgages
Life (assurance and protection) • General Insurances

We have a wealth of experience and can offer you a professional personal service to give you unbiased and relevant financial advice whatever your needs.

INITIAL MEETING FREE WITH NO OBLIGATION

Call 01925 754455 to speak to Kevin, Gary or Andrew
Email: enquiries@elmtreeifa.co.uk
5A Church Road, Lymm, Cheshire, WA13 0QG

Would you like the UK's best value domestic gas & electricity?

With our unique "Triple Value" guarantee we will:

- 1) Guarantee our prices will always be cheaper than British Gas.
- 2) Guarantee our prices will always be cheaper than your regional electricity supplier.
- 3) Guarantee our prices will always remain competitive with the cheapest tariffs available from the "Big 6" suppliers.

- Easy to switch • No minimum contract
- You keep the same pipes and meters
- You receive exactly the same gas and electricity

For full details: **0800 955 5247**
New Media Centre, Old Road, Warrington. WA4 1AT

THE UTILITY WAREHOUSE 

Poppy Appeal raised £13,151

A TOTAL of £13,151 was raised last year by Lymm and district Royal British Legion's Poppy Appeal.

Organisers Margaret and Leonard Woodward are now starting to play this year's collection and are seeking help from people prepared to give up some of their time.

Margaret said: "We are looking for volunteers to help deliver and collect Poppy Boxes to the schools and shops in our Lymm and district area."

Anyone who can help should contact Margaret or Leonard on 01925 754180.

The Lymm branch has recently become affiliated to the Lymm 2137 Squadron Air Training Cadets as a youth organisation.

Margaret said: "Our aim is to promote mutual support and encouragement to each others' aims within our local community."

Derek William Thompson

THE funeral has taken place of retired school teacher Derek William Thompson, aged 78, of Heyes Drive, Lymm, who died in Warrington Hospital on August 25.

Teaching

Mr Thompson came to Lymm in 1963 to teach woodwork at Lymm Secondary Modern School, where he enjoyed his teaching career until he left in 1985

He took many pupils on camping holidays in the Lake District and in holiday groups to Italy and Switzerland.

In later years he would be seen in the village on his mobility scooter.

Mr Thompson leaves his wife of 51 years, Margaret

Funeral arrangements were by John Burrows and Sons, of Lymm.

Obituaries

Irene Winifred Kennedy

THE funeral has taken place of Mrs Irene Winifred Kennedy, nee Hutchinson, of Egerton Road, Lymm.

She died of at Trafford General Hospital on July 25. Mrs Kennedy leaves a daughter Joyce, grandchildren Robin and Melanie, and great grandchildren Freya, Finlay and Pippa.

She spent her life caring for others and her last job was as a care assistant.

Funeral arrangements were by John Burrows and Sons, Lymm.



Betty Greenhalgh

THE funeral has taken place of Betty Greenhalgh (nee McGarr), of The Crescent, Lymm, who died in Warrington Hospital on August 2 aged 81.

Mrs Greenhalgh worked most of her life as a wire weaver at Sankey Green, and later worked at The Dingle Hotel in Lymm.

She is the widow of Brian Greenhalgh and leaves a son Ralph, daughter Pauline, stepson Brian, daughter-in-law Linda, son-in-law Albert, daughter-in-law Gaynor, grandchildren and great grandchildren.

Funeral arrangements were by John Burrows and Sons of Lymm.



Lymm kick start season with win

NEWLY promoted Lymm kick started the new season in National league three with a tense, hard-fought 27-26 win over Middlesborough.

Coach Kinsey had targeted a win to continue on from last season's fine promotion campaign. Selection was fiercely competitive but last minute injuries threatened the plans. However Lymm started the game at almost full strength. League debuts were handed to new forwards coach, Alex Bennett, new back rower, Jonny Bishop and exiting winger Andy Rowley. Chris Griffiths started at 9 after 8 months down under.

The flexible Scott Harrison started at prop alongside new skipper Tim Oakes at 2.

In front of a large, crowd Lymm exploded into life. A typical Griffiths dash into space found Ollie Higginson, now in his preferred back row position, for the first try after just 90 seconds. Rowley, showing no sign of nerves, slotted the conversion. 7-0. Poor defensive alignment was penalized on 7 mins and the visiting 10 hit the penalty. 7-3. The 10, O Farrell, looked a very able kicker and he produced a top drawer drop goal on 16 to make it 7-6.

Lymm may have buckled at this

Lymm27
Middlesborough26

stage but some familiar pace and skill from Knowles let last season's top scorer in the corner. High pace and lovely pace from Rowley and the home full back slicing the visiting defence apart. Rowley again converted making it 14-6.

Rowley excelled again with 2 difficult penalties on 33 and 40 to give Lymm a 20-9 lead at half time Middlesborough decided to play a tighter game and started to exert some pressure at the ruck. Swetman went over after a patient 5 phase Lymm attack on 46. Again Rowley notched the extras. 27-9. The home fans started to think about bonus points but the visitors had different ideas. A penalty on 49 and a try from the Middlesborough 9 took the score to 27-19 and when influential big man Bennett was binned on 62 mins it seemed the away team could snatch an unlikely win. Excellent 14 man defence was only punctured once, on 68, to take the score to 27-26. Excellent defence in midfield from Williamson and Knowles preventing probable scores in the dying minutes.

Captain Oakes was overjoyed saying: "There are things to work out

but it was a very positive start".

Director of Rugby Richard Boundy added: "It was a good day. Its always nice to field a team of predominantly local lads and the man of the match, on his debut, Rowley is a former colt and Lymm HS lad. Of the 18 in the squad only 5 or 6 didn't play for the colts."

Established 1878
John Burrows & Sons
Independent Family
Funeral Directors
M. G. Tandy
J. A. Tandy
16 Higher Lane, Lymm
Tel: 01925 752501



David Carey
Joinery Services

All aspects of building work undertaken by fully qualified and skilled tradesmen

Extensions & Refurbishments • Flooring & Decking
Kitchen's Supplied & Fitted • Loft Conversions
Windows Supplied & Fitted • Roofs

Tel: 01925 240429 Mob: 07790 396961
An honest, friendly, reliable fully insured service with free estimates all work guaranteed



Special Offers

- 500 Full Colour Digital Business Cards **£35.00**
(Buy 1 set, Get 1 set free!)
- 100 A3 Full Colour Posters **£38.00**
- 500 A6 Full Colour Double Sided Flyers **£50.00**
- 10,000 A5 Full Colour Flyers **£248.00**
(Pay for 1 side, Get the other printed for free!)
- 60" x 40" Full Colour Posters **£12.00**

Subject to VAT where applicable

t. 01925 240 247 e. info@247print.net

CLASSIFIED

Call 0800 955 5247 to advertise

ACCOUNTANCY & BOOKKEEPING

APLEGATE & CO licensed and regulated by the AAT to engage in public practice in Accountancy, Book-keeping, Payroll, VAT, Self Assessment. Tel: **01928 739996/07803 218343. 2 & 8 Collinson Court, Frodsham WA6 7PN.** (083/11)

AIR CONDITIONING

CLIMATE CONTROL BY WARRINGTON based 4 Seasons, for offices, shops, surgeries, schools, homes and conservatories like yours! Installed in a day guaranteed 5 years. Keeping you cool when it's hot and warm when it's not. **www.4sac.co.uk 01925 868960** (09/10)

BATHROOMS

The Bathroom Refurbishment Co.
We can create the Bathroom of your dreams
One Warrington based Company
One Job From start to finish
Unique 3D virtual CAD design system
Please visit our website
www.bathroomrefurbishment.co.uk
Please Ring Wayne
01925 826 828 or 07976 574 828 (09/11)

LYMM KITCHEN & BATHROOM PROFESSIONAL INSTALLATION. Ceramic wall & floor tiling. For free estimates and advice contact **Rob Evans** on **01925 752623 business or 07763 770408 mobile.** Est 2002. Local references provided (09/11)

BUILDING SERVICES

18TH CENTURY ENGLISH OAK BEAMS and truss for sale. I can arrange transport. Call **Keith Lyon** Mob **07860 329315 or 01925 763015.** (01/10)

BIG DIG Groundworks
Flagging, Block Paving, Garden walls, Fencing, Patios, Drives, Foundations. For free estimates call Mob: **07934 563 266 or Tel: 0153 424 5462**
www.bigdiggroundworks.co.uk (08/11)

BRICKLAYER AVAILABLE for garden walls, pointing etc. Tel: **01925 755441 Mobile: 07966 491624** (01/10)

THELWALL BUILDING SERVICES, extensions, internal alterations, brickwork, roofing, joinery, plastering, upvc windows and doors, soffets, facias, guttering. All work guaranteed. 20 years experience. For free quotes call **Gary** on **01925 266646 or 07808 169278** (08/10)

CARPETS, CURTAINS & INTERIORS

BRIDGEWATER FLOORING AND BLINDS we supply and fit carpets, vinyls, laminates, karndean, commercial flooring and tiles. Blinds-venetian, vertical, roller and roman. Outdoor awnings, curtains, upholstery, tracks, fabrics, poles and finishing touches showroom open at agden brow. Free measure quotation service. Tel: **01925 755805. Closed Wednesdays.** (02/11)

CUSTOM-MADE curtains and loose covers. All accessories supplied and fitted. Made-to-measure blinds. Our fabric or yours. Tel: **Orchard Soft Furnishings 01925 756388.** (05/11)

Paul Bains Flooring Solutions Ltd
Carpets, Wood, Vinyl, Laminates
Domestic & Commercial Supplied & Fitted
Family business covering all aspects of flooring including domestic & contract locations
Uplifting of old flooring can be arranged
Moving of furniture by arrangement
Limited disruption from start to finish
Check website for previous installations
www.paulbainsflooringsolutionsltd.co.uk
Office: 01925 758835
Mobile: 07973 376224 (07/11)

CARPET CLEANING

A1 STAINBUSTERS: Fully guaranteed carpet and upholstery deep dry cleaning. Clean & dry in only ONE hour. Quotes for both commercial and domestic. Contact the Local expert **John Latham** on **01925 205210 or 07765 314080** (010/10)

SAFE CLEAN: SAFE ORGANIC CLEANING. Specialists in cleaning all leather and fabric upholstery, rugs, carpets and curtains in situ. Ask about our new organic allergy relief system, Guardsman stain protection plans and carpet repairs. **Richard Vaal** on **0808 144 8178** (06/11)

SIMPLY THE BEST CARPET CLEAN YOU WILL EVER have. Cleaners UK Ltd. Est 22 yrs. Have your carpets & sofas beautifully deep cleaned leaving them fresh smelling & colour restored. Latest & best methods. Dry/steam. Professional, reliable & affordable. Call **Neil Riley** on **01925 264989/07831 336060** www.cleaners-uk.net (012/10)

CENTRAL HEATING

CORGI REGISTERED GAS ENGINEER. Andy Gas of Lymm, specialist in: Boiler upgrades, servicing, repairs to all domestic heating and gas appliances. Professional service. **Tel Andy on: 07753 838129 or 01925 753712.** (03/11)

CHILDREN'S ACTIVITIES

TUMBLE TOTS is the leading national physical play programme for children, classes available in Knutsford Hale & Bowden. We can be booked for private parties. Contact **Jane** on **07812-144450. www.tumble tots.com/sale** (05/11)

CLEANING SERVICES

arleys angels
• Spring Clean Specialists
• Presenting your home for sale
• Moving house
• After building work cleans
01925 266834
... because you're worth it! (09/11)

THE CLEANING FAIRIES. We'll work our magic to make your home sparkle clean. No home too big or too small. Call **Claire 07827040898 or Hayley 07515009645.** (010/10)

SIMPLY THE BEST CARPET CLEAN YOU WILL EVER have. Cleaners UK Ltd. Est 22 yrs. Have your carpets & sofas beautifully deep cleaned leaving them fresh smelling & colour restored. Latest & best methods. Dry/steam. Professional, reliable & affordable. Call **Neil Riley** on **01925 264989/07831 336060** www.cleaners-uk.net (012/10)

COMPUTERS

Having Trouble With Your Computer?
Running too slow?
Want to upgrade... go wireless?
Call for experienced engineer
Tel: 07974 448 165 or 01925 751 546 (02/11)

COUNSELLING

Birchbrook Counselling Service
Discreet and confidential counselling service
Reiki healing and attunements
Emotional and Physical Journey work
Call 07951 266476 (06/11)

DELIVERY SERVICES

FURNITURE FERRY LIGHT REMOVALS. Collections arranged from Ikea, Costco and other stores, garden centres, auctions etc. You choose, you buy, I deliver - SIMPLE. Reliable, inexpensive service. Tel: **Matt 07970 178 333 or 01942 732768. www.furnitureferry.co.uk** (05/11)

TnM Couriers - specialists in urgent UK same day deliveries, international and UK next day services available, contract work undertaken, parcels to pallets, no job too small or too big, competitive rates. **Call 01925 639029.** (06/11)

DRIVEWAY & PATIO

PAVED AREAS NEED POWER WASHING? We can transform your block paving, flags or tarmac. Super power washers also to hire. **Millington Power Cleaning 01565 830547 or 07983 837994** (06/11)

ELECTRICAL CONTRACTORS

A1 ELECTRICAL SERVICES PAUL LEWIS. For extra sockets/lights, main board upgrades to full rewires, no job too large or small. No call out fee. All work guaranteed. **Tel 01925 758337 or 07966 386806.** Est 23 years. (012/10)

ELECTEK ELECTRICAL SERVICES NICEIC PART P Approved 17th Edition Electrician. Rewiring, fuse boards, additional sockets and lights, burglar alarms and security lights. Free estimates and advice. **Call John 01925 754241/07977 560015.** (09/10)

EVERGREEN ELECTRICAL CONTRACTING. NICEIC approved contractor. For lights and sockets to rewires, fuse-box upgrades. Qualified electrician. All work is to the latest IEE wiring regulations. No job too small. Most major credit and debit cards accepted. **Tel: David on 01925 724219 / 07971 407022.** (06/11)

TRUST PROPERTY ELECTRICAL SERVICES. NICEIC Part P Approved Contractor. All Electrical work undertaken. Inspection & Testing & PAT Testing. All work certified & guaranteed. **Call Tim on 07754409906 or 01925 601055** (06/11)

EQUESTRIAN

LYMM RIDING SCHOOL. Learn to ride with friendly atmosphere, group lessons or private. Horses/ponies well schooled. Lessons from £10, we offer tests with pony club cert, please ring for more details. Training for pony club. **Rebecca Bennett** Reg AI. **01925 750435. Mob 07778 866006.** (02/11)

EQUESTRIAN SUPPLIES & ANIMAL FEEDS

STABLES SADDLERY. EST. 1964. Good stock of all equestrian supplies and animal feeds. Lots of interesting and unusual equine and canine collectables. **Tel: Barbara Williams on Lymm 752762.** (02/11)

FIRES & FIRE SURROUNDS

Quality Fireplaces at Affordable Prices
WARRINGTON FIRE SURROUNDS
Surround & Marble Only £299
Quality Value Service Guaranteed
01925 417731
www.warrington-fires.co.uk
8 Lovely Lane, Warrington (follow signs for hospital) (06/11)

GARDENING SERVICES

A F GARDEN SERVICES
REGULAR MAINTENANCE
TURFING, SOFT LANDSCAPING
CLEARANCES, POWER WASHING
HEDGE PRUNING
07796 818 686
0161 928 1722
www.afgardenservices.co.uk (06/11)

GARDENING SERVICES

Beechwood Industries Ltd
Does your garden need a complete makeover or just good management?
Free Assessment
Free Consultation
Landscape Design
Construction
Planting
Lawn Care
Tree Surgery
Garden Maintenance
Contact Adam Halford on **07749 253 308**
www.beechwoodindustries.co.uk (09/11)

FOUR SEASONS GARDEN SHOP EXCELLENT selection of perennials, shrubs, bedding, hanging baskets and much more! Excellent quality and even better prices! Free parking! Near northwich CV8 2EB. **Call 07792313460** (07/11)

J C SLAVIN
Landscapes & Garden Maintenance
Pruning • Garden Clearance • Fencing
Flagging • Driveways • Landscaping Designs
01925 756 839
Mob: 07599 747 373 (08/11)

J D S LANDSCAPE SERVICES
Garden Design • Driveways
Patios • Garden Walls • Fencing
Decking • Planting • Turfing
Regular Maintenance
Tel: 01925 764883 Mob: 07515 987735
www.jdscreate.com (010/10)

LAWN DRAINAGE AND SOIL AERATION. No trenches, no drainpipes, no digging, no repairs, no hassle. If this interests you **Contact Bob Harper 01925 266852 or 07952 608701.** (03/11)

M J NEEDHAM LANDSCAPES Award winning with over 15 years experience. All aspects of landscaping, specialist in bespoke construction. Qualified design service available. **Contact 01925 825 645 or 07888 730 383** (02/11)

SIMPLY GARDENS CONSULTANCY offers maintenance and design advice; maintenance schedules; planting plans; expert plant selection; on-site training. Regular or occasional maintenance can be arranged. **Call Graham on 01925 766873 or email gard.cott@btinternet.com** (03/11)

GATES

Village Gates
SPECIAL OFFERS NOW ON
Manufacturers and installers of quality timber gates
villagegates.co.uk
01925 766629 or Mob 07588 707923
Church Lane, Colchester (012/10)

To advertise
Call FREE
0800 955 5247

CLASSIFIED

Call 0800 955 5247 to advertise

HANDYMAN

Handyman Services
Home, Office & Garden

Gutter Cleaning, Repairs & Replacement
Welding Repairs & Fabrication
Fascias, Soffits & Windows
Patio & Driveway Cleaning
All Garden Work, Flagging,
Fencing & Turfing
Interior & Exterior Painting
Plumbing & General DIY
You Name It - No Job Too Small!
Tel Neil: **01925 757905**
Mob: **07813 201850**
handymanserviceslymm@hotmail.co.uk

(11/10)

HAIR & BEAUTY

PROFESSIONAL MOBILE hairstylist, creative cutting, colour/cour correction, including foiled highlights. Tel: Lorraine **01925 755441** / Mob **0786 7910805**.

(11/11)

HEALTH & BEAUTY

Body Treats
in the comfort of your own home
Emma Baker
Mobile Holistic
& Beauty Therapist
Call: **07891 809 805**

(08/10)

HEALTH CARE

THE WHITE ROOMS PHYSIOTHERAPY and Wellness Centre. Rapid expert assessment and treatment of all musculoskeletal injuries. Spinal Specialists! Discover and tackle the cause of your pain! **11, Henry Street, Lymm, Cheshire WA13-0LT.** Tel: **01925 752333** Mob: **07903 822700**.

(12/11)

HYPNOTHERAPY

MICHAEL MAHONEY clinical hypnotherapist for IBS, Stress, Anxiety and many other problems. Medical Research project experience, BUPA Service Provider. For **FREE information sheet** please email TimelineServices@aol.com or ring **01925-658322** www.healthyaudio.com

(6*)

IRONING SERVICES

Carol's Ironing services
NEXT DAY PICKUP & DELIVERY SERVICE
Lymm
Tel: **01925 767945**
Mob: **07979 948197**

(11/11)

ITEMS WANTED

OLD GOLD & SECOND HAND JEWELLERY ALWAYS REQUIRED. Branded watches considered. Best prices paid at Knutsford's busiest jewellers established 1980. John Rees Jewellers, 91 King Street, Knutsford 01565 653 009

(08/10)

JEWELLERY

evans & co
JEWELLERY COLLECTORS
Jewellery Workshop
39 London Rd, Stockton Heath, Warrington, WA4 6SG
Quality repair, remounting, design work and setting finished to a high standard.
Loose certificated diamonds and gemstones supplied.
Stockists of fine contemporary British Swiss and German jewellery.
Tel: **01925 269292**

(11/10)

JOINERY

LYMM & DISTRICT JOINERY & CONSTRUCTION Loft & Cellar conversions. Extensions and renovations. All aspects of joinery undertaken. Free estimates no obligation. T: **07867 973566**. M: **01925 267611** W: www.joinerywarrington.co.uk

(02/10)

KITCHENS

LYMM KITCHEN & BATHROOM PROFESSIONAL INSTALLATION. Ceramic wall & floor tiling. For free estimates and advice contact **Rob Evans on 01925 752623** business or **07763 770408** mobile. Est 2002. Local references provided

(12/11)

LOCKSMITH

CHESHIRE LOCKSMITHS LTD UPVC Door Specialist. Non Destructive Entry Service. Free Quotations. Lymm Based Business. Contact **Tony 07774 805 588**.

(11/10)

OPTICIANS

ADCOTT OPTICIANS. State of the Art opticians in the heart of Lymm Village. Comprehensive sight tests and a wide choice of spectacles tailored to you, whatever your budget. **01925 757075**

(11/10)

PAINTING & DECORATING

N & K DECORATING SERVICES, High Class Professional Decorators, Paper Hanging Specialist, Internal and External works undertaken, Lymm Based Company, Free Quotations. Call **01925 759936** or **07783 068377**.

(14/11)

PAYROLL

WHY TRY TO BE A PAYE EXPERT? Watkinson Black can provide a cost effective payroll service, releasing you to concentrate on your business. For further details please phone: **01925 413210** or e-mail: info@warringtonaccountants.co.uk

(6*)

PEST CONTROL

Wasps' Nests Destroyed
£32
Same Day Service
7 days per week
Postcodes L, CW & CH - £44.50
Ant Problems Permanently Cured
Call FREE on
0800 019 8382
(01925 670375)
www.harrierpestprevention.co.uk

(09/10)

PHOTOGRAPHER

BRENDA GREEN ABIPP. Qualified professional photographer for People, Environmental Portraits, Weddings, PR, Special Occasions. Established 30 years. websites: www.brenda.green.co.uk www.brendagreen@demon.co.uk Tel: **01925 753580**.

(15/11)

PICTURE FRAMING

EDGAR ART & FRAMING, 19b The Cross Lymm. Picture framing, original art, jewellery, gifts and greetings cards. (Turn right at The Terrace Brasserie & Cafe and right again at the far end). Tel **01925 754700**.

(01/10)

PICTURE FRAMING SERVICE, also original paintings, prints, and giftware. Giclee Printing Service for artists. **The Brentwood Gallery, 106 - 108 London Road, Stockton Heath, Warrington WA4 5LE.** Tel: **01925 601473** www.brentwoodgallery.co.uk

(11/11)

PLASTERING

B.E.A. PLASTERING OF LYMM
Full rooms plastered • Skimming
Bonding • Stud walls built
All repair work large or small
Tyroleaning/Rendering
Call David anytime on
01925 753966 or **07786 245068**
www.beaplastering.co.uk
Member of the Guild of Master Craftsmen

(02/11)

PLASTERING

LYMM PLASTERING

First Class Workmanship
Quality Time served Plasterers
All aspects of Plastering
K Rend coloured Render
Refurbs • New Builds
Re-skims • Tyrolean
Drylining
All Insurance Work
Fully Insured



Tel: **Brian Gaffney**
Office: **01925 755958**
Mobile: **07967 087034**

(11/11)

PLUMBING

CL PLUMBING AND GAS SERVICES
Local honest plumber covering all aspects of plumbing and gas works. Boilers and central heating installed and repaired. Bathroom suites supplied and fitted. Cookers and fires fitted. Landlord gas safety checks. All plumbing emergencies - 24 hour call out. No job too small, OAP Discount rates. Tel **Craig 01925 819692** **07851 405466** www.clplumbing.co.uk
PB PLUMBING. All domestic and commercial work. Fitted bathrooms and tiling. Small jobs welcome. Free quotes. Fully insured. C&G qualified. Gas Safe Registered Call **0161 928 3253** or **07821 554867** or Freephone **0800 824 7747** or visit www.pbplumbing.co.uk

(11/11)

STEPHEN ROBERTS
Plumbing and heating, installations and servicing, boiler breakdowns, system upgrades
free estimates
CORGI REGISTERED
Tel: **07830 331231**

(10/10)

Plumbflow Ltd
Plumbing and Heating Services
All plumbing & gas installation/repairs
boiler replacement/servicing
bathrooms
Call today for a FREE QUOTATION
01925 468003
www.plumbflow.com

(6*)

RE-UPHOLSTERY

TRADITIONAL and modern re-upholstery. Dining chairs, headboards, 3-piece suites etc. Customer's own fabric welcome. Tel: **Orchard Soft Furnishings 756388**.

(12/11)

ROOFING

J & S ROOFING. Roofing repairs & complete replacement. Built up flat roofing, Slating, Tiling, Fascias, soffits and gutting Free quotes, references available. Tel: **0781 488 0246** & **0788 639 0444**.

(03/11)

SITUATIONS VACANT

CAFE SOLAR, LYMM require a morning cleaner. Contact **Nathan on 01925 754444**. We also require experienced waiting on floor staff. Contact **Kat on 01925 754444**

(11/10)

TAXI / PRIVATE HIRE SERVICE

Frazer's of Lymm
Private Hire Service • Good local rates
Reliable friendly service • up to five seater
Airport • Station Schools • Business or pleasure for OAPs
Contact **Nigel on 01925 754426** or **Mob 07812 674822**

(12/11)

TAXI / PRIVATE HIRE SERVICE

HORN'S
Airport Transfer Specialists
Stations, Airports, Nights Out
4 & 7 seaters
Prompt and reliable service
LYMM 751761 or 07881 786250

(01/10)

LARRY'S CARS AIRPORT TRANSFERS and private hire. All UK airports covered. Over 10 years experience in the Lymm area. Call **01925 755060**. Mob **07989 342179**

(08/10)

Silverfox Private Hire
Black, discreet 5-seat Chrysler Voyager for all occasions: Airport Transfers, Corporate Travel, Contract Work.
Any destination. Professional, reliable service Tel: **07964 194150**

(05/11)

TREE SURGERY

R&R TREES
Tree Surgery • Pruning
Hedges • Turfing • Fencing
Flaggging
Richard Jennings
M: **07802 512263**
T: **01925 750418**
www.randrtreeservices.co.uk

(02/11)

TUTORS

CHESHIRE TUTORIALS offers tuition. Primary to 'A' level. Tutors especially primary maths, science and English welcome. Tel: **01925 758296**.
EXPERIENCED TEACHER WITH PATIENT, FRIENDLY approach. Beginners to grade 8. Adults welcome. A few places available for September. Call **01925 752773** for further details. **MusB (hons) PGCE**
FRENCH OR SPANISH TUITION for conversation, exam preparation or business. Learn a new language, improve your language skills or prepare for your GCSE or 'A' Level exams. Contact: **Suzanne on 01925 759597** or **07790 965250**

(09/11)

TV - SATELLITE

AERIALS 2000 of Lymm. No job too small. All work guaranteed. Aerials and satellites supplied and fitted. Sky subscriptions available. OAP reductions. Sky Digital / On Digital. 7 days a week. Tel: **01925 753427**. Mobile: **07712 632315**.

(11/10)

WINDOWS & GLAZING

NEIL COPELAND WINDOWS & Conservatories Ltd. Specialist in uPVC double glazing windows, doors, porches, conservatories, also fascias and guttering. FENSA registered. All work guaranteed. Tel: **01925 756138 / 07961 361550**.

(12/11)

SP GLAZING for all your glazing requirements, double glazed units including failed and misted units, broken windows, mirror fixing. Kite marked to B/S. Time served glazier with over 30 years experience. For a friendly no obligation quote tel **Sam Pendlebury on 01942 671859**. Mob **07919 660296**.

(10/10)

MOTORING SERVICES

PARKVIEW CAR SALES
We buy and sell
QUALITY CARS
Best price paid
Telephone Peter on
01925 575737 / 07957 545479
23 Podgate Lane
Podgate, Warrington
Cheshire, WA1 3RS

(6*)

Banner & Co

Independent Residential Sales and Letting Agent



PROPERTIES ARE MOVING!

Let us show you how we sell / rent our properties.

- As a privately owned company we have the ultimate incentive to sell/rent your property for as much as possible in the best possible timescale
- Open 7 days a week, accompanied viewings including late nights
- Advertising both locally, nationally and via the web
- Free rental guarantee

JOIN IN OUR SUCCESS

If you are considering moving now or in the future, or would simply like some advice regarding your property please contact Linda or Andy



01925 753636
www.bannerandco.com

Please note that if you have already instructed another agent, we would advise you to check any agreement you may have to ensure you are not liable for more than one commission by instructing us as your agent

