

Lymm

Life

FREE EVERY MONTH

November 2014

Issue: 188



urban

BUILDING PROJECTS LTD

**Residential & Commercial
Building Specialists**

Tel: 01925 730888

www.urbanbuildingprojects.co.uk



Dark Bee Project

Page 3



**LYMM
PARISH
COUNCIL**

Approved by Lymm Parish
Council as the official
magazine for Lymm

Banner & Co

Independent Residential Sales
and Letting Agent

**See our main advert
on the back page
for details**

01925 753636

Regular news updates at www.lymmmlife.co.uk

Editor
Gary Skentelbery

Production
Paul Walker

Advertising
James Balme
Freephone
0800 955 5247

Editorial
01925 623633

Email
info@lymmmlife.co.uk

Websites
www.lymmmlife.co.uk
www.culchethlife.com
www.frodshamlife.co.uk
www.warrington-
worldwide.co.uk
www.warrington.tv

Address
New Media Centre
Old Road Warrington
WA4 1AT

*Lymm Life is published
monthly by Orbit News Ltd.*

*The contents of this magazine
are fully protected by copyright
and nothing may be reprinted
or reproduced without prior
permission of the publishers.*

*The publishers are not liable for
any statement made or opinion
expressed by third parties in this
publication.*

Printed by TwentyFourSeven

Editor's Comment



LAST month's feature on possible plans for a Lymm Heritage Centre has attracted a lot of interest.

Having such a facility, especially in or near the village centre would certainly encourage further footfall.

It would also provide information points for locals and visitors alike and those who are working on the project believe it could also provide an important resource for local schools.

A small working group of people with experience of grant applications, teaching, local history research, marketing and heritage has already been established and I wish them well with their project.

But before they go any further they need to show evidence that there is a need and desire for such a centre in the community.

Now they are asking residents to

take two minutes to visit their new website and complete the survey and give honest opinions.

The questionnaire can be even filled out anonymously if you prefer.

The key to the success though is not only the desire and hard work of the volunteers - but also finding a suitable home to display our local heritage.

I fear this could be the main stumbling block as village centre premises do not come cheap.

If there are any local benefactors out there who know of a suitable location please let us know - because such a facility would help make Lymm an even greater visitor attraction!

Meanwhile to take part in the

survey and to have your say on any proposed heritage centre for the village visit <http://alanlymm.wix.com/lymmheritagecentre> and complete the two minute survey!



Fertility Workshop
at Centre for Reproductive Health, Daresbury
8th November 10am - 2pm

CHESHIRE Natural Health

Learn how to increase your chances of conceiving with:
Nutrition, Hypnotherapy, Mindfulness,
Acupuncture and Reflexology

Places are limited so book soon to avoid disappointment

Cheshire Natural Health, Beehive House, Tarporley Road, Stretton, Warrington
www.colonicsforhealth.co.uk Tel: 01925 730123

N & J STANHOPE

Coal and Log Supplies

Best Quality Coal
Smokeless Fuel
Logs Supplied in Bags and Bulk
Fresh Bacon and Eggs

Open 7 Days

Broomedge Farm
Burford Lane, Lymm WA13 0SE

Tel/Fax: 752830

**Competitive
Fees**



Bridgewater
Estates & Lettings

For Sale

or

To Let

Call today for a free market appraisal



Telephone 01925 599111 | 14a Warburton House, Eagle Brow, Lymm, Cheshire WA13 0LJ
www.bridgewaterel.co.uk



LYMM is a hive of activity for Dark Bee Project

LYMM has become a hive of activity for re-introducing the original 20 million year old honey bee to the UK.

Historically bees have been imported into the UK from all over the world, bringing with them many diseases and breeding naturally with the local *Apis Mellifera mellifera* (Amm) bee. Consequently, all the bees in the UK contain mixed DNA with the locally evolved Amm Bee being less able to survive the winter.

Now two local beekeepers, Mathew Taylor and Frank Hilton,

are trying to reverse this negative trend, by setting up the Lymm Dark Bee Project.

They are in contact with a further 10 beekeepers within five miles as the bee flies from Lymm centre, all have expressed interest. Therefore they will have about 50 colonies from which to select the ones with the most Dark Bee DNA and can, therefore do a quicker job than working alone. If they can

voluntarily limit the importation of Bees into the area whilst selecting from the best local stock and distributing (free of charge) mated Dark Queens to all the individual members to allow superseding their worst colonies, it is hoped that they can breed back into the local stock a Bee with a large percentage of its original ancestors characteristics and DNA.

Breeding the Dark Bee has had its first success in the efforts of a beekeeper who has obtained an exclusion zone in the Scottish islands of Collonsay and Oronsay, in that no bees other than *Apis Mellifera mellifera* were allowed to be imported into these islands from the 1st January 2014.

The Lymm Dark Bee project

aspires to achieve the same type of order along with a substantial part of the North of England. At the same time they are hoping to eradicate the varroa mite, some diseases and improve local honey production. The objects of the project have attracted the attention of Arley Hall, where Frank is developing an apiary, whose policy backed by the National Trust of promoting local produce production, are sponsoring the project.

Beekeepers within five miles as the bee flies from the centre of Lymm are invited to join in this exciting project.

For further information or to get involved contact Frank on 01925 551839 or email frankqesl@yahoo.co.uk



JK PIPELINES LTD
Specialist supplier of pumps and valves to the water and sewerage industry

Phone: 00 44 (0) 1925 75 09 50
Website: www.jkpipelines.co.uk
E-mail: info@jkpipelines.co.uk

Sophies Soft Furnishings

Curtains • Roman Blinds
Cushions • Tiebacks • Poles
Tracks • Valances • Pelmetts

We design, make and fit to meet your exact requirements.

For free home visit or advice ring
Anne on 01925 754446

www.sophiessoftfurnishings.co.uk

KEATE HOUSE CARE HOME



Quality person-centred care for your elderly loved one

Keate House is an independent family-run Care Home, specialising in providing Residential, Dementia, Respite and Day Care services for the elderly.

Situated in the beautiful village of Lymm, our lovely purpose designed home is supported by our compassionate team, dedicated to providing only the best in quality person-centred care in our happy, stimulating and homely environment.

- Residential Care
- Respite Care
- Dementia Care
- Day Care

To talk to one of our Care Managers or to arrange a visit, call: **01925 752091**

Brookfield Road, Lymm, Cheshire WA13 0QL

Email: info@keatehouse.com Web: www.keatehouse.com

Enriching life with quality care



What's On in conjunction with Lymm Parish Council



November 10

LYMM HISTORY SOCIETY

The Lancashire Contempletibles – Terry Dean
Lymm Village Hall, 8pm
Visitors always welcome
More info Lynne Smith 01925 756776

November 11

LYMM PARISH COUNCIL

Lymm Parish Hall 7.30pm

LYMM THURSDAY EVENING BRIDGE CLUB

Lymm Village Hall every Thursday 7pm

MAPLE LODGE ART GROUP

Meet each Wednesday 9.30am - 12.30pm
Oughtlington Community Centre, Lymm
Details: 01925 755126

ROTARY CLUB OF LYMM

Every Wednesday at Statham Lodge Hotel
7.15pm for 7.30pm
Contact the secretary 01925 650189

LOVING HEARTS & HANDS

Knitting for charity at Lymm Methodist Church,
2nd and 4th Thursday each month.
1.30pm - 3pm. Details: 01925 753298

MARKET LUNCHES

Eagle Brow Methodist Church
3rd Thursday in the month
Light lunches 12 noon till 2pm. All proceeds to
Youth For Christ and YMCA Room at The Inn

LYMM SCOTTISH COUNTRY DANCE CLUB

St Mary's Church Hall
Second and fourth Fridays (Sept - May)
7.30pm. Details: 753853

GARDENING CLUB

Meet Third Wednesday of the month
Lymm Baptist Church, Higher Lane. 7.30pm
Visitors welcome. £2 includes tea and cake

LYMM FLORAL ART GROUP

Lymm Village Hall
Third Monday of the month (except August)
at 7.30pm

LYMM ORNITHOLOGY GROUP

Lymm Village Hall, 7.45pm for 8pm,
Last Friday in the month (ex June & July).
Guest speaker, Slide Show, Refreshments.
Visitors welcome. First visit FREE.
Also field trips. Details: lymmog.co.uk

LYMM PHOTOGRAPHIC SOCIETY

Every 2nd and 4th Wednesday
(ex July & Aug), 7.30pm
Spread Eagle pub, Eagle Brow.
Details: www.lymmphotosoc.org.uk

LYMM WINE AND BEER CIRCLE

2nd Thursday of the month, 8pm
The Boat Stage (Royal British Legion)
Details: 01925 604400

LYMM CONCERT BAND

Rehearsals every Thursday evening
United Reformed Church, 8pm.
Details: 01925 752934

THE VENUE, LYMM

Chess Club every Monday from 6pm,
Open Mic Night every Tuesday from 9pm,
free chinese meal and 2-1 cocktails
every Wednesday, Live Music every
Thursday and Saturday

LYMM WI

Every second Wednesday, 2-4pm at Lymm
Youth and Community Centre. Visitors
welcome.

LYMM BOOK CLUB

Second Thursday of the month 7.30pm,
Spread Eagle, Eagle Brow. Details 01925
752371

LOW CARBON LYMM

Every second Monday of the month. 7.30pm,
Spread Eagle. 07786 074741 all welcome

**To feature your
event on this page
please call our
team on
01925 631592**



**LYMM
PARISH
COUNCIL**

Tuesday, October 14
Lymm Parish Hall 7.30pm

Film nights back with a double bill

LYMM Festival's "Winter Warmer" film nights are back to brighten the dark nights.

The first double bill comes on Thursday, October 30 with two popular recent releases showing at the United Reformed Church on Brookfield Road.

At 5pm (doors open 4.30pm) the film is "How To Train Your Dragon 2". Set in a world of Vikings and dragons, the action comedy tells the story of a teenager who doesn't fit in with his tribe's tradition of dragon slaying.

At 8pm (doors open 7.30pm) the grown-ups can enjoy Helen Mirren in "The Hundred-Foot Journey".

That's the distance between the restaurant run by Michelin-starred French chef Helen Mirren and one operated by a newly arrived Indian family. Directed by Steven Spielberg and Oprah Winfrey it has had great reviews.

Tickets, priced at £4 for the kids' film and £6 for the adults in the evening (no concessions), are on sale from the Lymm Festival website www.lymmfestival.org.uk

It is recommended that tickets be bought in advance as a sell-out is expected.

New faces on the festival team

THE team that runs Lymm Festival has been joined by a number of new faces.

Previous director Jacquie Davies has had to step down due to increased work commitments and her role has been split into two.

Dave Sawyer has been with the festival for a few years but has now taken on the role of events director. Lauren Sanders has joined as marketing and publicity director. Several other new people with varying skills and experience have also joined the committee.

Chairman Ian Marks said: "I am delighted with the team we have in place. It is always good to bring in new blood with a fresh set of ideas. We are very pleased with last year's festival and the challenge for the team is to put on an even better event next year."

Dave added: "We are busy planning our Winter Warmer events. We are holding another of our great film shows in October followed by our legendary Blues Night in November. In February comedian and raconteur Arthur Smith of 'Grumpy Old Men' fame will be performing and in March there will be an evening led one of the region's finest acoustic musicians."

For details of the Winter Warmer programme visit www.lymmfestival.org.uk

We now offer FEYE 2 year old places at Rosebank & Naturegarten

Our Rosebank nurseries really are the "natural" place for your children to grow and develop.

For babies and toddlers in The Rosebank Centre and Nursery and After-School children in Naturegarten we give them the space to find their feet, explore the natural world and develop their minds.



- Excellent facilities and extensive grounds
- Forest day options
- Outstanding Parent Partnership
- Excellent child development
- Free FEYE sessions for 2-4 year olds
- Led by qualified teachers & graduates
- Full day care option

The Rosebank Centre receives Quality Award



The Rosebank Centre, 3 months to 3 years 01925 756900

The Rosebank Naturegarten, 2 to 13 years 01925 758959

www.therosebankcentre.co.uk



41 Manchester Road, Woolston, Warrington, WA1 4AE
Tel: 01925 251143

AUTUMN SUPER SALE!

LENOVO LAPTOP

Intel Celeron Dual Core 1.86GHZ
4GB RAM
320GB HDD
15.6 LED Display
Webcam & Bluetooth
Windows 8.1 64-bit



An incredible £299.99 including VAT!

Meet your MP David Mowat

David Mowat, MP for Warrington South, holds regular surgeries throughout the constituency. If you would like to arrange an appointment to discuss an issue of concern to you please

e-mail him at david.mowat.mp@parliament.uk
or telephone 01925 231267.



David Mowat

Member of Parliament for Warrington South

www.davidmowat.org

Produced by David Mowat MP, House of Commons, London SW1A 0AA



Beer festival raises £5k for charity

CHARITY money has come pouring in following Lymm and District Round Table's fourth annual beer festival after another great turnout from the ale-loving public.

Over £5,000 was raised in total, a record for the event, as hundreds attended the two-day festival sponsored by Urban Building Projects Ltd, specialists in domestic and commercial building.

The 37 cask ales, ciders and perries on offer at Lymm Village Hall, along with hearty grub served up by Lymm Ladies Circle - who also raised over £450 for good causes - ensured the public went away well fed and watered.

James Williams, who helped to organise the festival, said: "We had more ales and ciders on offer than ever before which proved to be a good move as at the end of Saturday night the stocks were running low, but we still had a few beers available."

"I'd like to thank everyone who contributed to the event, especially our main sponsors, Urban, our cask sponsors, those who sampled the ales, pulled the pints, entertained the crowd or provided the food."

"They all helped to ensure we raised as much money as we did - we now need to focus on making some donations and planning next year's event... not before our Big Lymm Bonfire that is!"

If you would like to nominate a charity or community group that you would like the Round Table to consider donating to, please email info@lymmroundtable.co.uk with more information.



Commercial
Commercial Property
Litigation
Employment
Wills
Trusts
Probate
Personal Injury
Conveyancing
Crime
Family & Divorce

01925 231000
info@fdrlaw.co.uk
Warrington
Stockton Heath
Frodsham

www.fdrlaw.co.uk





Santa & his Reindeer

Saturday 22nd & Sunday 23rd
November
 Fun starts from 11am both days



DON'T MISS SANTA'S REINDEER

Face Painting * Childrens Entertainment *
Special Offers * Rio Grande Miniature Railway
and of course.... FATHER CHRISTMAS

High Legh Garden Centre
 High Legh • Knutsford • 01925 756991



GreenAppleLeasing



Kia Sportage 4x4
 1.6 GDI
 £216.18 incl VAT per month
 3+47 PCH
 10k miles a year



Ford Fiesta Ecoboost Titanium
 £134.74 incl VAT per month
 9+47 PCH
 8k miles a year



Ford Transit
 290 L2 Diesel Trend
 £174.99 + VAT per month
 6+23 BCH
 10k miles a year



BMW 1 SERIES
 116d Sport 5dr 2.0
 £260 incl VAT per month
 NO DEPOSIT
 10k miles a year

At locally based Green Apple Leasing:

- We can source any car
- We organise your finance
- We deliver direct to your door

All makes and models of new and nearly new cars and commercial vehicles

0800 1932422
 Manchester Road, Warrington WA1 3RS
claire@greenappleleasing.co.uk
www.greenappleleasing.co.uk

Part of the Davies Car Sales Group, an award winning family business established in 1927

Foodstore plan given green light

A CONTROVERSIAL plan for a foodstore on the site of a former petrol station at Lymm has been approved by Warrington planners.

Located in Rushgreen Road on the site of the former Rushgreen service station, the proposed store will have a sales area of 6,500 sq ft, parking for 57 cars and could create up to 35 jobs.

Owned by the Brookhouse Group a question mark still hangs over which brand of foodstore will be operating from the site.

Speaking at the meeting local Cllr Ian Marks said: "This is a significant planning proposal and has generated strong views in the village."

"Understandably many of these are from residents who are uneasy or strongly opposed to the application. However many others who have told me they would welcome a store of this nature in Lymm."

"I have considered the issues in some detail and studied the comprehensive report carefully."

"One key issue is traffic and the related topic of parking. There is no question that the road is relatively narrow along Rushgreen Road and that getting out of nearby Fletcher's Lane and Reddish Crescent is not easy. I am also anxious that there will be no overspill parking onto nearby streets."

"But on balance I am persuaded that the overall impact of the supermarket on traffic is acceptable and I am pleased with some of the conditions that have been added on access, visibility and delivery vehicles."

Cllr Marks said the effect on other traders in the village was finely balanced too.

"There are some interesting arguments in the report from the experts about the effect of different sized supermarkets on village

traders. I am persuaded that the effect could be beneficial and not detrimental providing there is no serious impact on our anchor store Sainsbury's."

"A third issue is that of jobs. The new ones to be created are welcome providing of course they don't lead to a loss elsewhere because of business failures."

Cllr Marks said another important issue was that of the Green Belt.

He added that the site needed improving and there were already enough houses in this part of Lymm.

After the meeting Cllr Marks added, "I am pleased with the decision to go ahead and believe it is in the best interests of the village. However I am disappointed the Committee did not take up my proposal for a Section 106 community benefit condition to help fund the shoppers' bus service."

Fellow local Cllr Sheila Woodyatt said there was serious local concern about the likely detrimental effect of

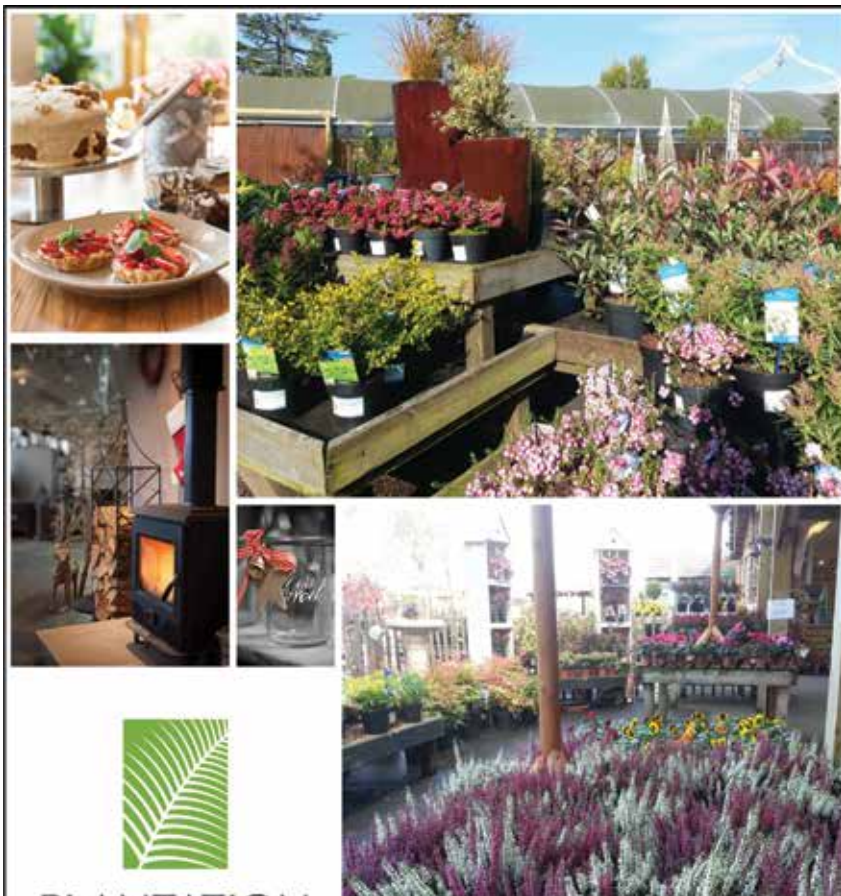
the scheme on the rural character of the area, likely increases in traffic and the potential to damage the viability of Lymm village centre.

Objections were received from 16 nearby residents, but there was no objection from Lymm Parish Council, on the understanding the proposal does not extend to Green Belt land.

Tom Whitehead, town planning manager at Brookhouse said: "This is a fantastic result and we now look forward to further progressing the proposal, including confirming the operator."

"As well as bringing this derelict land back into use, the store will offer a number of benefits to the local community. The supportive feedback we received highlighted that many residents are looking forward to the prospect of new jobs and greater choice as well as the chance to carry out more of their food shopping in Lymm instead of surrounding towns."

**IRLAM AND
CADISHEAD CARS**
24 HOUR PRIVATE HIRE SERVICE
Tel: (0161)
777 8888
BIGGER FLEET - BETTER SERVICE
PART OF NEW CADISHEAD CARS LTD



Plantation is a family run garden centre located in the heart of the Cheshire countryside but just 10 minutes from J19 of the M6.

Take a stroll around our plant market where you can choose from a variety of locally grown plants to add a splash of Autumn colour to your garden, from bedding and basket plants to shrubs covered in berries and fiery foliage.

Or just relax in front of the wood burning stoves in our cosy cafe where we serve brunch, lunch and weekend roasts as well as our delicious homemade cakes.

Free cup of Tea or Americano coffee and a slice of cake on production of this token.

Valid until 31st October 2014 subject to availability; Loose leaf tea not included.


PLANTATION
gardens for living

Plumley Moor Road, Plumley, Knutsford, Cheshire, WA16 9SD
Tel: 01565 722315 www.visitplantation.co.uk

France • Italy • Spain • Portugal • Croatia • Austria • Worldwide

More relaxed cycling and walking holidays...

Tailor-made cycling and walking routes for all abilities

High quality, hand-picked hotels and villas

Delicious regional cuisine and fine wines

Complimentary bag run and wine pick up service

Comfortable bikes provided on cycling holidays

Detailed maps, guides and route notes

Out Now!
New 2015
Cycling
Brochure



Order yours today!

Catalan Classic Walk

Self-Guided Walking  +

Catalunya is steeped in culture with its traditions and festivals dating back over thousands of years. This six night holiday allows you to explore this region rich in mediaeval villages, truly unspoilt countryside and the spectacular coastline dotted with pretty fishing villages, crystal clear waters and beautiful beaches.

For full details please visit
www.headwater.com/W06CN

6 nights
'Tour Only' price from
£869 pp

Highlights of Gozo

Self-Guided Cycling 

Gozo is perfect for gentle exploration on two wheels - each day offering a montage of ancient archaeological treasures, gentle tracks, superb coastal vistas and hidden hilltop hamlets to explore. The hotels offer a highlight too including the luxury 5-star Kempinski Hotel in San Lawrenz which boasts one of Europe's best spas.

For full details please visit
www.headwater.com/C06GO

9 nights
'Tour Only' price from
£847 pp

headwater

...the more relaxed active holiday

Terms & conditions: For terms and conditions that apply to these holidays, please visit www.headwater.com/bookingconditions.

To book any of our holidays including advance bookings for 2015

Call **01606 827268**
or visit www.headwater.com



Please visit **www.headwater.com**
for our full range of cycling and walking holidays



**THE NORTH WEST'S
OAK & PINE SPECIALISTS**

Fantastic savings on all bedroom, dining & occasional ranges

**AUTUMN
PRICE FALL**

STARTS 11th OCT

**25%
OFF ALL
RANGES**

NEW RANGE

Alderley Dining & Occasional

NEW RANGE

Woking Medium Oak Bedroom

branches
The home of beautiful wood furniture

Wilderspool Causeway,
Warrington WA4 6QP

Store open: Mon to Sat 9am-5.30pm,
Sun 11am-4pm

Tel: **01925 241869**

Beautiful Home Accessories & Giftware in-store!

Shop online: www.branchesfurniturewarrington.co.uk



Left to right: Wendy Johnson care home manager, Avis Clarkson founder of the home, Mayor of Warrington Cllr Ted Finnegan, Mayoress Mavis Finnegan and owner Malcolm Clarkson.

Mayor opens new dementia centre

MAYOR of Warrington Cllr Ted Finnegan was hand to help a Lymm care home celebrate its 25th anniversary by officially opening a new dementia wing.

The Mayor cut the ribbon at Keate House Care Home at a special open day to celebrate 25 years of providing care and the opening of a new Dementia Care Centre.

High quality care at reasonable prices

Grappenhall
DENTAL PRACTICE

Independent private practice
Private dentistry at NHS prices (conditions apply)
Now taking new clients due to expansion after 8 successful years
Easy parking/groundfloor easy access including wheelchair
State of the art equipment / highest standards of cleanliness / cross infection control
Emergencies seen same day / no waiting lists
Late night opening Tuesdays until 8pm

Dr Andrew Brown and associates welcome new patients

Tel: 01925 210977 or 01925 481341
148 Knutsford Road, Grappenhall, Warrington WA4 2PW
grappenhalldentalpractice@virginmedia.com
www.dentistswarrington.co.uk



Thelwall Upholstery

FOR THE MOST COMPETITIVE RATES IN THE AREA

49 Knutsford Road, Grappenhall WA4 2NR
Call Sean on: 01925 604770 or mobile: 07799 228080
www.upholsterywarrington.co.uk

For all your upholstery needs

SPECIALISTS IN:

- Re-filling Cushions • Re-springing • Full Re-upholster
- Dining Furniture • Headboards

A wide range of sample books to choose from
All at competitive rates

PHONE FOR YOUR FREE ESTIMATES



THE LYMM HOTEL



THE LYMM HOTEL IS SET IN A ROMANTIC AND PEACEFUL SETTING – IDEAL FOR YOUR WEDDING CELEBRATIONS.

WEDDING OPEN EVENINGS
EVERY THURSDAY NIGHT 5PM UNTIL 8PM

Discuss your wedding plans with our professional team, and get a good feel of the hotel and how we can make your day even more special.

AFTERNOON TEA
Come and taste our delicious selection of afternoon teas from Cream Tea at £5.95 to Traditional Full Afternoon Tea or even Celebration Afternoon Tea for that special occasion

SUNDAY LUNCH
EVERY SUNDAY 12 NOON - 2.30PM
Three course £14.95, 13-5 yr old £7.50, Under 5's free. Bookings essential

For further information, please call 0844 879 9047 or email general.lymm@macdonald-hotels.co.uk
Whitbarrow Road, Lymm, Warrington, Cheshire, WA13 9AQ


AA Hotel Group of the Year 2013-2014 & 2007-2008



WWW.MACDONALDHOTELS.CO.UK/LYMM

Reproductive Health Group - free and discounted IVF cycles

THE Reproductive Health Group opened the UK's first integrated fertility hospital, the Centre for Reproductive Health, at Daresbury Park in April 2014. Feedback from patients and visitors has been highly positive.

Recognising that embarking on fertility treatment is an extremely important decision and that uncertainty about costs and the chances of success can cause

concern, RHG have decided to take a unique approach to funding for IVF treatment which demonstrates their confidence in the exceptional quality of fertility care they deliver.

After undergoing a full set of diagnostic tests to identify the best course of treatment, patients can be offered one of two packages which include subsequent free or discounted cycles of IVF treatment should the first cycle not result in a

pregnancy. RHG are the first clinic in the UK to offer such a scheme.

Free fertility consultations are also available at the Centre for Reproductive Health. To book or to find out more, call today on 01925 202180, email info@reproductivehealthgroup.co.uk or see www.reproductivehealthgroup.co.uk.

Charity dog walk



KNUTSFORD Vets organised a charity dog walk to raise money for Manchester Dogs Home after the arson attack which killed over 50

dogs.

Many clients and non-clients came together to raise over £300 for the charity appeal fund.

Fun was had by all and the afternoon culminated in a BBQ kindly provided by Fryers Garden Centre.



Knutsford
Veterinary Surgery

...honest, tailored care

Firework Season Noise Phobia and Free Nurse Behavioural Consultations

All welcome

- Free new pet checks
- Same vet each time
- Emergencies seen onsite 24/7/365

Only 5 miles from Lymm at Fryer's Garden Centre

01565 337 999

Manchester Road,
Knutsford, WA16 0SX

www.KnutsfordVetSurgery.co.uk

Reproductive Health Group

To find out about our unique approach to funding IVF, including **FREE** and **DISCOUNTED** cycles, call us on **01925 202180** or visit www.reproductivehealthgroup.co.uk

What makes us different...

- We are the only private women's healthcare group in the North West to offer a full range of investigations and treatments in fertility and gynaecology
- The newest assisted conception centre incorporating the most up-to-date technologies and clinical facilities in the North West

Find out more by visiting...

www.reproductivehealthgroup.co.uk

To book your free consultation please call

Tel: 01925 202180

Email: info@reproductivehealthgroup.co.uk

Centre for Reproductive Health | Daresbury Park | Warrington | WA4 4GE





Independent Financial Advice v Restricted Financial Advice

Do you know the difference?

The word restricted comes across as an awful word when it comes to financial matters, and it can be very confusing for the public too.

What a restricted financial planner is most certainly not, is like what the old tied adviser of the 1990's used to be. A restricted firm **chooses to limit** the number of areas of financial advice that they choose to advise on.

The Financial Regulator, The Financial Conduct Authority (FCA) states that if a financial firm chooses to specialise in a particular market then it **should not** hold itself out as acting independently in the broader sense. What the regulator is telling us here is that a true independent financial adviser should be able to give advice, or at least offer advice from all product areas on the market. This could include deposit accounts, structured products, or life protection plans to name but a few.

Look at this from a health service analogy. Let's suppose you go and see a GP who will give holistic health advice to many people. But if you went to see your GP about your eye sight for example, if he cannot resolve your problem he may well refer you to an eye specialist. There is that word again, specialist. If you think about it, when it comes to your health, you would want to be seen by a specialist wouldn't you?

I think most people when they are making financial decisions, rather like with their health, would want to see a specialist. Here at Simple Solutions we specialise in Investments, along with Pensions this is our core business. So the FCA will class our firm as restricted.

So although the word restricted does come across as being a little negative and somewhat off putting, in essence the word is quite positive in terms of a financial practice such as ours. Therefore Simple Solutions shall move to restricted status from 1st October 2014.



Don Wernham,
Financial Planner

TECHNOLOGY

Simple Solutions uses the latest technology to keep you updated, even when you are on the move or abroad, check out our website for more details.



PENSIONS

• Pensions are changing due to the March 2014 budget and you now have a lot more options to consider'

INVESTMENTS

Our investment expertise will ensure that you have the most suitable investment to help you achieve your financial goals.

We use:

- Asset Allocation
- Risk Profiling
- Diversification
- Correlation

1st Floor, 67 London Road
Stockton Heath, Warrington
WA4 6SG

Tel: 01925 266628
Fax: 01925 267043





Adrian lives the "Original" barber shop dream

WHEN Adrian Lummis opened his Original Barber Shop in Lymm he was fulfilling a long-standing desire – to have a business in his home village.

Adrian was born in Lymm, lived in the village until he was 30 and had always dreamed of having a barber shop here.

His Mum, Marlene has had a hairdressing business – Vogue – in Lymm for more than 20 years and now he has become the second generation of the family to open a business in the village.

Adrian has a wealth of hairdressing experience.

His first Original Barber Shop, in Stockton Heath, has been trading for more than 15 years.

Both shops, with their oak floors, solid wood fittings and granite worktops have a traditional feel and relaxed atmosphere.

Traditional

They offer both contemporary and traditional gentlemen's hairdressing, catering for every style. Customers' ages range from one to 101!

Luxury hot-towel shaves, hair colouring and a wide range of grooming products ensure the shops really are 'original'.

They open at 8am and provide a late service on Thursdays until 8pm.

Adrian – "Ade" to his friends and customers – has designed his new shop to blend in with Lymm's traditional village atmosphere.

We Clean Ovens ...so you don't have to!

Call us today to leave your cooking appliances sparkling, using our eco friendly products.

oven
oven valeting service

Local | National | Affordable

Call for LOCAL service

Our oven cleaning experts will leave you free to enjoy your valuable leisure time.



01925 453377 oven.co.uk

THE ORIGINAL BARBER SHOP OPEN NOW IN LYMM

THE ORIGINAL BARBER SHOP SPECIALISE IN ALL AREAS OF GENTLEMEN'S HAIR AND BEARD GROOMING. OUR BARBERS ARE TRAINED TO THE HIGHEST STANDARDS AND OUR SHAVE PREPARATIONS ARE PERFORMED WITH RUTHLESS PRECISION.

SO, IF YOUR HEAD NEEDS SORTING OUT, GET YOURSELF IN HERE. WE BELIEVE THAT WE CAN PROVIDE YOU THE BEST BARBER SERVICE ANYWHERE IN THE CIVILISED WORLD.

OPENING TIMES

MONDAY	08.00 – 18.00
TUESDAY	08.00 – 18.00
WEDNESDAY	08.00 – 18.00
THURSDAY	08.00 – 20.00

FRIDAY	08.00 – 18.00
SATURDAY	08.00 – 16.30
SUNDAY	CLOSED



26 THE CROSS,
LYMM
01925 550 490

Be smooth ~ Be yourself ~ Be Original

Xross interiors

16 the cross lymm walb ohu

01925 758298

Quality bespoke items for your home at affordable prices



Our professional, friendly team are on hand to help you choose from a vast selection of fabrics, wallpapers, blinds, poles and carpets.

We also offer a complete personal measuring and fitting service.

HARLEQUIN VILLA NOVA FARROW&BALL Sanderson



Proposed heritage centre plan given kick-start

LAST month's cover feature on possible plans for a Lymm Visitor and Heritage Centre certainly caught the interest and imagination of a number of readers.

Thanks to several responses Su and Alan Williams now have a core team with a variety of skills and backgrounds including local studies, librarianship, education and grant application.

The article also prompted Hazel Warburton of Oughtrington to dig out an old photograph (see above) of earlier generations of her husband's family - the Whiteleggs - in costume to celebrate Lymm May Queen. It was especially poignant as it turned out the photograph was taken exactly 100 years ago in 1914 with the country on the verge of war.

Hazel explained "I lost my husband only last year but he would have been delighted that the picture may become part of the heritage collection as he was born and raised locally and was always interested in village history".

"The article in Lymm Life has certainly given the project a kick start" said Su Williams "and I have had no end of people stop me in the street or ring up to say what a great idea it is. But we still have a very long way to go. If people have potential exhibits associated with Lymm, either to donate or just on a loan basis we would really like to hear from them. We will only ask people to physically offer them once we are ready to go ahead but we really need to know what is out there".

The group is still investigating premises too. If you think you may know of anywhere, preferably in the centre of the village give Su a call on 01925 754080 or email lymmheritagecentre@gmail.com.

The next stage of the project will include a survey aimed at a wide range of residents and potential visitors that will establish the level of local support. The group will also be consulting with and seeking the support of local organisations including schools and the council.

There is a web site where the survey can be completed at alanlymm.wix.com/lymmheritagecentre



Is your CONSERVATORY always **TOO HOT or **TOO COLD**?**

4 SEASONS CONSERVATORY ROOFS

HERE'S THE SOLUTION!

Conservatory Roof Conversions

- Cool in summer / warm in winter
- Eliminates rain noise & sun glare
- Suitable for all conservatories
- Requires no planning permission
- Reduce your energy bills
- Lightweight - fits existing structure
- 10 year warranty

20% OFF LIMITED OFFER

BUY NOW - PAY NOTHING for 12 months
Written details on request. Authorised and regulated by the Financial Conduct Authority

NATIONWIDE SERVICE

CHOICE OF COLOURS

STUNNING INTERIORS

also

- Windows, Doors & Conservatories
- Rooflines & Flat Roofs
- All Building Work

your ...as seen on TV!

CHOICE
your home your choice

The Energy Centre, 590 Manchester Old Rd, Middleton M24 4PW
OPEN: Mon-Fri 9am-5pm, Sat & Sun 10am-2pm

CALL FOR A FREE SURVEY & QUOTATION

FREE PHONE 0800 169 48 22

www.your-choice.uk.com

Exciting new building project

WITHINGTON Girls' School is delighted to report that first foundations have been laid for the construction of a new Junior School building and a central social 'Hub' at the heart of the School.

With construction due for completion in summer 2015 - Withington's 125th anniversary year - the project will deliver a new suite of classrooms for younger pupils, enabling two-form rather than single-form entry in both Years 5 and 6, and enhance accommodation and facilities available for the whole School. The 'Hub' will be a light and airy roofed courtyard linking the Junior and Senior departments.

The project has been designed by Manchester and London-based architects Levitt Bernstein, who have created a master plan to meet Withington's long term

development strategy. Northwest Construction company, Seddon, who have carried out hundreds of school refurbishments in their 115 year history, has been appointed as lead contractor on the project.

Said Withington's Headmistress Mrs Sue Marks: "Withington has a heritage of vision stretching back to its foundation in 1890. The new Junior School and Hub will help to ensure that Withington remains at the forefront of girls' education nationally in the way our founders intended, offering exceptional opportunities for personal development - academic, cultural, sporting and social - and encouraging independence of mind and high aspirations".

Withington Junior girls look forward to moving into their new building'



Unrestrained learning says Deputy Head

HAVING spent a decade obediently preparing children for Key Stage 2 SATs, holding revision classes and doing countless past papers Ben Hanson was delighted when he arrived at the MGS Junior School as Deputy Head.

"This is what I hoped teaching would be like when, years earlier, I completed my application for teacher training," said Ben. "Not restricted by the National Curriculum and with no SATS or entrance exams to prepare boys for, memorable and challenging learning are part of the daily diet, from September to July. Unrestrained learning is how I describe it.

"Freedom from a one size fits all curriculum results in us having a priceless commodity- time. We are able to collapse our own curriculum for an afternoon a week and boys participate in an "Options" programme of challenging and unusual learning experiences - which the boys themselves have chosen to do: Orienteering, Ornithology, Woodwork, Mini-Robotics, Military Strategy, Fantasy Stock Markets, Forensics, Philosophy, the Great Outdoors, Debating, iPad Exploration, Photography, Cookery, to name but a few!

"The learning is boy-centred and Options is a highlight of the week. This freedom also enables staff to play to their own strengths. It allows staff to employ skills and passions that they have outside work. Enthusiasm is contagious. If a teacher has a passion for the great outdoors, he or she can create an Option by this name and their enthusiasm is translated into fun, memorable, challenging learning experiences.

Ben added: "The results are stunning: minds are stimulated; new skills are developed; beautiful, eye-catching sculptures are created; heinous crimes are solved; food is foraged; shelters are built; delicious quiches are consumed! The most important result of all, though, is that the boys' appetites for education and discovery are whetted."



OPEN DAYS

Sixth Form

For girls aged 16+
Wednesday 15th October
6.00 to 8.00pm

Senior School

For girls aged 11-18
Thursday 6th November
4.30pm to 6.30pm
Saturday 8th November
10.00am to 12noon

**NEW PURPOSE-BUILT,
EXPANDED JUNIOR
SCHOOL OPENING
SEPTEMBER 2015**
Additional classes for
girls in years 5 & 6

Junior School

For girls aged 7-11
Thursday 6th November
4.30pm to 6.30pm
Saturday 8th November
10am to 12noon

"Sports teach discipline and commitment, they challenge and build character for everything you do in life."

Howie Long



Withington
GIRLS' SCHOOL

To find out more call Admissions on 0161 224 1077
Wellington Road, Fallowfield, Manchester M14 6BL

wgs.org

Means
-tested
bursaries
now available
from year 5
upwards

The Manchester Grammar School

A true adventure for boys with enquiring minds

Whole School Open Event

Saturday 8 November 9:30 am - 12:30 pm

Sixth Form Open Event

Thursday 13 November - Arrive at 6:00 pm

Find out what makes us special

Challenge matters

mgs

The Manchester
Grammar School

For further information contact
Kath Heathcote 0161 224 7201
ext 234 or k.heathcote@mgs.org

MGS.org
[@MGSmagic](https://www.instagram.com/MGSmagic)



GS COLLECTION

AUTUMN/WINTER



NEXT
Hat & Scarf

Monsoon
Coat

M&S
Bag & Tights

tkmaxx
Boots

GS
GOLDEN
SQUARE
WARRINGTON

140 STORES.
1000S OF BRANDS.
GSWARRINGTON.COM



Squash academy looking to grow

LYMM Squash Club is looking to grow its coaching and development programme for children aged 5-17 in Warrington and surrounding areas, aiming to introduce children to the popular sport of Squash.

The coaching programme features six weekly squash coaching sessions on Saturday mornings led by coach Darren McCann. Sessions are tailored to suit children of any age and ability with each programme concluding with a competition and prizes for participants.

The first programme received great feedback with all participants signing up for the next program.

"The club is looking to build on this success by boosting the number of participants," said Rob Spurr, Chairman of Lymm Squash Club.

"We aim to give these Juniors the opportunity to compete at County and National level in the future as they develop. Perhaps we'll find the next Commonwealth Games star in Lymm!"

Six weeks of coaching works out at only £18 per child and all equipment is provided making it a low cost sport to take up.

For more information about Lymm Squash Club and its Junior Academy visit www.lymmsquash.co.uk or email coaching@lymmsquash.co.uk.

Women golfers raised £2,550 for charity

MORE than 140 women golfers, representing 28 clubs from across Cheshire and Lancashire attended Lymm Golf Club's annual Lady Captain's Charity Day.

A total of £2,550 was raised for Lady Captain Carol Gleave's chosen charity, St Rocco's Hospice.

There was a raffle, tombola and cake, produce and good-as-new stalls.

An unexpected surprise was a visit from BBC TV who were filming grass-roots comments about the decision by the Royal and Ancient Golf Club of St Andrews, Scotland, to admit women members for the first time.

Carol said: "We had a fantastic day and I was really pleased with the amount we raised."



From left are Liz Lyons, Jackie Booth, Beryl Boucher vice captain, Carol Gleave lady captain, Maureen Taylor, Corran Meldrum and Carole Cooper.

Helping make women even more gorgeous!

A new approach to makeup has arrived in South Warrington with the opening of The MakeUp Clinic at Walton.

In a relaxed and private environment women of all ages can have their makeup applied professionally or learn how to apply it themselves. Previously this kind of service has only been available in London or New York.

"We all wear makeup, but very few of us ever learn how to apply it properly", says Emma Clare, owner of the clinic.

"I bring the skills of a professionally trained makeup artist to all women, not just to celebrities and models. I can teach you how to apply your own makeup in a professional way and advise on what colours and textures to wear."

Emma added, "It doesn't matter whether you have never worn makeup before or want to improve your skills, I will teach you all you need to know".

As well as lessons the clinic also does special occasion makeup, where women can relax and enjoy being transformed. Makeup Parties are also becoming increasingly popular, with a group of friends getting together to have fun and learn more about how to apply their makeup.

Emma is passionate about helping women find their confidence and believes that makeup can really help.

"Most women are way too negative about how they look, I want to show them how gorgeous they really are".

For more information about The MakeUp Clinic go to www.themakeupclinic.co.uk, email makeupcliniccheshire@gmail.com or call Emma on 07785 242001.



The
MakeUp
Clinic

The Magic of Professional MakeUp

Come and see how a professional makeup artist can make you look good and feel great

Special Occasion MakeUp • MakeUp Lessons
Bridal Makeup • Makeovers and Photographic MakeUp

07785 242001 Themakeupclinic.co.uk

WI seeks volunteers

VOLUNTEERS are being sought by Lymm WI to make bunting for the WI centenary next year.

Members are also planning to go on a coach trip to Llandudno in November, with lunch out and a visit to a Christmas market.

They recently visited Styal Mill, and went on a five mile walk along a cobbled path once used by apprentices every Sunday to walk to the local church. Afterwards they enjoyed a picnic in the sunshine.

Hill farmer Peter Slack, from Whaley Bridge, had members laughing at their September meeting with his talk on his experiences with ramblers walking in and around his farm and field.

Volunteers are being sought to make bunting for the WI centenary next year.



*Choosing the right care home
for Mum was made easier.*

Brookfield:

- Residential Care
- Respite Care

Cheshire Grange:

- Nursing Care
- Residential Care
- Dementia Care
- Respite Care

From the moment my mother and I first visited her Barchester home, we knew we had found somewhere pretty special. Elegant surroundings, delicious food and beautiful gardens were made even more appealing by the presence of like-minded residents with whom she can socialise and enjoy activities. For my part, knowing that she's safe in the care of such a dedicated and compassionate team gives me great peace of mind. And for that I'm extremely grateful.

Thank you, Barchester!



Why not call us or drop in for a chat over a cup of tea?

www.barchester.com



Brookfield Care Home

18 Brookfield Road, Lymm, Cheshire, WA13 0PZ

Tel: 01925 755 363

Cheshire Grange Care Home

Booths Hill Road, Lymm, Cheshire, WA13 0EG

Tel: 01925 750 670

EXCHANGE YOUR GOLD AND SILVER FOR INSTANT CASH



All items of jewellery accepted

Did you know...?

We accept silver jewellery, cutlery, tea sets, spoons, cigarette cases, candlesticks, trophies, trays, medals, coins and pocket watches.

**ROLEX WATCHES WANTED!
ANY CONDITION**

Open: Tuesday-Saturday: 10am - 5.30pm

1 London Road, Stockton Heath
(First floor entrance on Fairfield Road)

07544 486 621



**GOLD & SILVER
BULLION DEALER**



HOLLY GRANGE
Montessori Nurseries
LYMM



"We can do no great things, only small things with great love"

WHY CHOOSE MONTESSORI?

A Montessori nursery is one where adults and children care for both each other and their environment and take great pride in it. We offer a stimulating and individualised curriculum which focuses on the development of the whole child.

It is a small, homely, caring and nurturing environment that supports each child's growing need for independence.

We have a huge bespoke designed garden which offers amazing learning and play experiences - including natural woodland, a tree house, bug hotel, and looking after our chickens! We also have a separate and beautiful garden for babies.

Highly skilled, trained and fully qualified staff

Outstanding communication & parent partnerships via email

Flexible sessions, including term time only places available

Free places for 2, 3 and 4 year olds.

Come and see our newly renovated nursery at



Find us on
Facebook

36 Oughttrington Lane,
Lymm WA13 0SS



TELEPHONE: 01925 752111

E-MAIL: enquiries@hollygrangemontessori.co.uk

VISIT: www.hollygrangemontessori.co.uk

Winter at The Spread Eagle 25% Off Your Food Bill

With this voucher and a valid email address

Throughout October & November

Monday - Friday, 12pm - 6pm



Take a look at our Christmas menu
And book with us today!

www.spreadeagle.co.uk

orb
jewellery

www.orbjewellery.co.uk

01925 759492

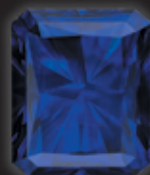
Jewellery for all Occasions



Jewellery Repair Workshop

Watch Batteries & Straps

Rhodium Plating



Insurance Valuations

Jewellery Cleaning & Re-sizing

Bespoke Design Service



1 The Grove, Lymm (next to post office)

Tue / Fri 9:30 - 5:00 Sat 9:30 - 4:00 (Thur till 7 pm)



**ARE YOU
CONSIDERING
EXTENDING
OR RENOVATING?**



For a **FREE** consultation
please call **01925 730888**

info@urbanbuildingprojects.co.uk

www.urbanbuildingprojects.co.uk

410 Europa Boulevard, Gemini Business Park, Warrington WA5 7TR



Business Doctors prescribe sponsorship of Rugby Club



Shirt sponsors, Business Doctors Rod Davies (far left) and Matt Levington at Lymm Rugby Club with first team captain Sion Williams (second left) and head coach Adam Fletcher.

LYMM Rugby Club has kicked off their new season having won a major new shirt sponsorship deal with locally based Business Doctors.

Business Doctors is a UK-based business support network dedicated to helping small to medium sized businesses achieve their vision. Founders, Rod Davies and Matt Levington, both residents of Lymm village, expressed delight at being involved with their local rugby club.

"What a great place Lymm Rugby Club is, both on and off the pitch" commented Rod Davies. "This is such a vibrant, successful, and community-oriented place to be we just couldn't resist getting involved."

"We have been coming here for years and always enjoy ourselves, but from a business perspective it just makes loads of sense," he added. "Our strapline is 'We don't just coach, we get on the pitch!'"

"Already we have generated a prospective franchisee from the rugby fraternity, because he heard we are sponsoring Lymm RFC. I would encourage all businesses to get involved here because the atmosphere and benefits are tremendous."

Head of Commercial Services at Lymm RFC, John Hopkinson commented: "We are delighted to welcome Business Doctors on board and look forward to a long and fruitful relationship."

"We are keen to work with many potential business partners, especially as we have such a huge, thriving membership. There are real opportunities at Lymm Rugby Club and we have a sponsorship package to suit every company's budget," concluded Hopkinson.

For more information visit www.businessdoctors.co.uk or for sponsorship opportunities at Lymm RFC contact John Hopkinson at jhopkinson@live.com

Ravenbank
SCHOOL

Invitation to all Parents
of Children Starting
School in
September 2015
Open Afternoons
13th & 14th October 2014
2:15pm



No booking is necessary for these events. Please contact school if you are unable to attend these dates.
Tel: 01925 753926 email: ravenbank_primary@warrington.gov.uk



PRIESTLEY
◆◆◆ COLLEGE ◆◆◆



**TO FIND OUT ABOUT 2015 ENTRY
VISIT ONE OF OUR OPEN EVENTS**

Wed 22 Oct	:	5.30pm - 8.00pm
Thurs 23 Oct	:	5.30pm - 8.00pm
Thurs 13 Nov	:	5.30pm - 8.00pm
Sat 15 Nov	:	11.00am - 1.30pm



**For more information call us now on 01925 633591 or visit
www.priestley.ac.uk**

Welcome to Lymm High School's

Sixth Form Open Evening

Thursday 6th November 2014
at 6pm

Executive Principal's address in the Main Hall
at 6pm and 7pm

Be part of a thriving sixth form, which provides you with a purposeful, friendly and highly supportive learning environment. Our students grow academically, personally and socially over the two years with us and we want you to be part of it!



Lymm High School Sixth Form, Oughtrington Lane, Lymm, Warrington, WA13 0RB
Tel: 01925 755458 Email: info@lymmhigh.org.uk Twitter: [@lymmhigh6thform](https://twitter.com/lymmhigh6thform)

Parish council begs to differ with planning chiefs

A PLAN for a four-bedroom detached house, with adjoining garages and stables, on the site of the former Railway Inn at Lymm led to a difference of opinion between Lymm Parish Council and borough council planners.

Members of the parish council decided to raise no objections – but borough planning officers recommended permission be refused on the grounds the house, because of its scale and siting, would have a significantly harmful impact on the openness of the Green Belt.

Neighbours in Mill Lane fully supported the proposals on the grounds the site was a derelict eyesore and the proposed house

would make an excellent addition to the area.

The three-storey Railway Inn was demolished in 2011 after being declared dangerous following a serious fire. But an L-shaped group of single-storey buildings, known as "The Coach House" remain on the site and would be demolished to make way for the new house.

Lymm Parish Council stressed that the buildings should be used for residential purposes only and that the stables should not be run on a commercial basis. The area alongside the Trans Pennine Trail should be retained as Green Belt.

Planning officers said the proposals would have a significantly harmful impact on the openness and character of the Green Belt.

Obituary

Neville Atherton

THE funeral has taken place of Neville Atherton, aged 79, of Manor Road, Lymm, who died in hospital at Warrington on September 10.

Cremation took place at Walton Lea Crematorium on Monday, September 22.

Neville spent most of his working life in the dredging department of the Manchester Ship Canal Company.

He is survived by his wife, Gwen and children, Andrew, Yvonne, Richard and Jennifer, with grandchildren Katie, Ellie, William, Dale, Kayleigh, Lewis, David and Megan.

Funeral arrangements were by John Burrows and Sons of Lymm

Established 1878
John Burrows & Sons
 Independent Family
Funeral Directors
 M. G. Tandy
 J. A. Tandy
 16 Higher Lane, Lymm
 Tel: 01925 752501

CANVAS
COLOUR PRINTS
500mm x 500mm
£24.70
+VAT

50 WEDDING INVITATIONS
FULL COLOUR
£24.70
+VAT

100 BUSINESS CARDS
£2.47
+VAT

50 A3 POSTERS
£24.70
+VAT

1x A2 COLOUR POSTER
£2.47
+VAT

PRINT PROBLEMS SOLVED!
BANNERS • STICKERS • MAGAZINES
FLYERS • POSTERS
OFFICE STATIONERY
CUSTOM PRINTS
FOLDERS • CARDS • SIGNAGE

twentyfourseven
design & print ltd

info@247print.net • 01925 240247
The New Media Centre • Old Road
Warrington • WA4 1AT
the NEW MEDIA centre

Artwork needs to be supplied in a print ready format. Payment must be made when ordering.

CLASSIFIED

ACCOUNTANCY & BOOKKEEPING

arleys
freelance and
contractor accounting
keeping it simple...
01925 598499
www.arleys.co.uk

Bookkeeper/Accountant. Licensed for maintaining financial records, VAT Returns, Payroll Service, Management Accounts, SAGE Software Consultancy. **Contact: 07815 617914.** (G1)

BATHROOMS

The bathroom Refurbishment Co.
We can create the Bathroom of your dreams
One Warrington based Company
One job from start to finish
Unique 3D virtual CAD design system
Please visit our website
www.bathroomrefurbishment.co.uk
Please Ring Wayne
01925 826 828 or
07976 574 828 (G1)

BUILDING SERVICES

BRICKLAYER AVAILABLE for garden walls, pointing etc. **Tel: 01925 755441 Mobile: 07966 491624** (G1/14)

CARPETS, CURTAINS & INTERIORS

CURTAINS, CARPETS, VINYLs, blinds, wall paper, top brands including Harlequin, Jane Churchill and Casadeco. Made to measure by friendly knowledgeable staff. Free carpet uplift and removal with any new carpet purchase. **Xross Interiors, The Cross, Lymm Tel 01925 758298 or email hello@xrossinteriors.co.uk web: www.xrossinteriors.co.uk** (G3/15)

CUSTOM-MADE CURTAINS and loose covers. All accessories supplied and fitted. Made-to-measure blinds. Our fabric or yours. **Tel: Orchard Soft Furnishings 01925 756388.** (G7/15)

CARPETS, CURTAINS & INTERIORS

FOR ALL YOUR CURTAIN, Plantation Shutter and Window Blind requirements, Contact Neil who has over 25 years experience in the Business and let us bring our Samples to you. **Mobile: 07738 934678, email: neil@lymmshuttersandblinds.co.uk** (G3/15)

Paul Bains Flooring Solutions Ltd



- CARPETS - WOOD - LAMINATES -
- DECORATIVE VINYL FLOORING -
- FREE CHOOSE AT HOME SERVICE -

101 Bucklow Gardens, Lymm WA13 9RN
T: 01925 748549 M: 07973 376224
E: paulbainsflooringsolutions@msn.com
www.paulbainsflooringsolutions.co.uk (G5/15)

CARPET CLEANING

A1 STAINBUSTERS: Fully guaranteed carpet and upholstery deep dry cleaning. Clean & dry in only ONE hour. Quotes for both commercial and domestic. **Contact the local expert John Latham on 01925 205210 or 07765 314080** (G4/15)

SIMPLY THE BEST CARPET CLEAN YOU will ever have. Cleaners UK Ltd. Est 26 yrs. Have your carpets & sofas beautifully deep cleaned leaving them fresh smelling & colour restored. Latest & best methods. Dry/steam. Leather cleaning specialist. Professional, reliable & affordable. **For more info call Neil Riley on 01925 264989/ 07831 336060 www.cleaners-uk.net** (G1/15)

CLEANING SERVICES

arleys angels
• Spring Clean Specialists
• Presenting your home for sale
• Moving house
• After building work cleans
01925 266834
... because you're worth it! (G1)

SIMPLY THE BEST CARPET CLEAN YOU will ever have. Cleaners UK Ltd. Est 26 yrs. Have your carpets & sofas beautifully deep cleaned leaving them fresh smelling & colour restored. Latest & best methods. Dry/steam. Leather cleaning specialist. Professional, reliable & affordable. **For more info call Neil Riley on 01925 264989/ 07831 336060 www.cleaners-uk.net** (G1/15)

DELIVERY SERVICES

FURNITURE FERRY LIGHT REMOVALS. Collections arranged from Ikea, Costco and other stores, garden centres, auctions etc. You choose, you buy, I deliver – SIMPLE. Reliable, inexpensive service. **Tel: Matt 07970 178 333 or 01942 732768. www.furnitureferry.co.uk** (G5/15)

ELECTRICAL CONTRACTOR

TRUST PROPERTY ELECTRICAL SERVICES. NICEIC Part P Approved Contractor. All Electrical work undertaken. Inspection & Testing & PAT Testing. All work certified & guaranteed. **Call Tim on 07754409906 or 01925 601055** (G3/15)

EQUESTRIAN SUPPLIES & ANIMAL FEEDS

STABLES SADDLERY. Est 1964. Good stock of all equestrian supplies and animal feeds. Also storage available for trailers, caravans and household goods etc. **Tel: Barbara Williams on Lymm 752762.** (G12/14)

Lymm Life

offers a cost effective local **LEAFLET DELIVERY** service at competitive prices. We can also design and print leaflets with our in-house design team.

Call us now on
0800
955 5247

CLASSIFIED

FREEPHONE 0800 955 5247 to advertise

FARMING / FIELD SERVICES

All paddock and small field work undertaken

- Flail mowing front & rear & Hedge cutting (flail or saw head)
- Japanese knot weed spraying
- Septic tank emptying
- Retail park maintenance

N Worth Contracting 07973 242808

(P10/15)

FRENCH POLISHER

RAFAEL MELONI. FRENCH POLISHER, 25 Years experience Domestic, contract, antiques. Furniture, staircases, doors. Sand and re-finish wooden floors. **Call 01925 266943 or mob 07811629738. www.raf-french-polisher.co.uk**

(I2/15)

GARDENING SERVICES

Beechwood Industries Ltd
Customer management solutions

LOCALLY BASED

- Garden Maintenance
- Lawn Care
- Landscape Design
- Construction
- Paving
- Tree Surgery
- Free Assessment
- Free Consultation

Contact us on:
07749 253 308
01925 860544
www.beechwoodindustries.co.uk

(G*)

J C SLAVIN
Landscapes & Garden Maintenance

Flagging • Driveways • Tree/Hedge Pruning
Garden Clearance • Fencing • Landscaping

0161 775 0297
Mob: 07737 655 211
www.jcslavinlandscapes.co.uk

JDS
LANDSCAPE & GENERAL BUILDING SERVICES (LYMM BASED)

Garden Design • Driveways
Patios • Garden Walls • Fencing
Decking • Resin Bond Driveways
See website for examples

Tel: 01925 754883 Mob: 07515 967735
www.jdscreate.com

(I2/14)

JP LANDSCAPES

We are approved & recommended by Fenchurch
For quotations call 0800 955 5247 and please quote ref.

- Block Paving - Tarmac
- Slabbing - Driveways
- Patios - Graveling
- Brickwork - Steps
- Fencing - Decking
- Power washing - Turfing
- Driveway Repairs

For a FREE no obligation quote please call
0800 858 9961 or 01925 393 188
or call john directly on
07818 383 384 / jplandscapes56@gmail.com

Value for money is our motto. We are a family run business.
Vale Avenue, Warrington, WA2 8AY

(G1/15)

GATES & FENCING

Village Gates
Manufacturers and installers of quality timber gates

villagegates.co.uk

For free quotes and advice call
01925 552322

New Workshop and Showroom at:
8a Trident Business Park, WA3 6AX

(G7/15)

HANDYMAN

Handyman Services
Home, Office & Garden

Internal and External Painting • UPVC Window and Door Repair and Replacement
Mechanism/Lock Changes • Soffits and Fascias
Gutter Cleaning, Repair and Replacement
Flagging • Fencing • Patios • Jet Washing
All Garden Work • All DIY

Call today for a FREE quote

Tel Neil: 01925 757905 (Lymm Based)
Mob: 07813 201850
handymanserviceslymm@hotmail.co.uk

(I11/14)

HAIR & BEAUTY

PROFESSIONAL MOBILE hairstylist, creative cutting, colour/colour correction, including foiled highlights. **Tel: Lorraine 01925 755441 / Mob 0786 7910805.**

(I4/15)

HOME SERVICES

ATLAS
Your friendly local independent

WASP CONTROL

PEST CONTROL CHIMNEY SWEEPING

Affordable, professional, guaranteed service.
Fully insured, fixed prices - no surprises once on site!
Discrete vehicles, no embarrassing signs
07999 487 925 / 01925 445 222
www.atlas4u.co.uk

(I5/15)

HYPNOTHERAPY

MICHAEL MAHONEY clinical hypnotherapist for IBS, Stress, Anxiety and many other problems. Medical Research project experience, BUPA Service Provider. **For free information sheet please email TimelineServices@aol.com or ring 01925-658322 www.healthyaudio.com**

(G*)

JOINERY

S3 JOINERY
(Lymm based)

Joinery/Carpentry • Custom Cabinets and Built-ins • Kitchens • Bathrooms
Tiling • Property Refurbishment

No job too small. Free quote
Fully insured and guaranteed
01925 694133 07590 470971
www.s3joinery.com

(I2/15)

KITCHENS

QUALITY KITCHENS SUPPLIED and fitted by local experienced fitters. No job too small. If you have bought a kitchen we can fit it - or we can supply and fit full kitchen units including joinery work, plastering, electrics etc. All work is guaranteed. **B&L Kitchen Installations. M 07935 267200 or 01925 451883 after 6pm.**

(G*)

MORTGAGES

INDEPENDENT MORTGAGE ADVICE. For local, impartial and professional advice on all aspects of mortgages contact Darren Simpson at Infinite Financial Services on **08450 309099 (local rate) or 07708 975122.**

(G12/14)

OPTICIANS

ADCOPT OPTICIANS. State of the Art opticians in the heart of Lymm Village. Comprehensive sight tests and a wide choice of spectacles tailored to you, whatever your budget. **01925 757075**

(I10/14)

PAINTING & DECORATING

BENJAMINS PAINTERS AND Decorators. 20 years professional experience in commercial and domestic decorating, wallpapering, coving, interior and exterior work. **Telephone 07837 452514 or 01925 755198.**

(I12/14)

LOCAL TRADESMAN DECORATOR.

Small DIY. 30 years experience. Friendly and realistic estimates. All painting, paper hanging. Professional finish. Ref. From established Lymm residents. **Call Alan. Tel. 07745 272705 or 01925 756867 (evenings).**

(I11/14)

PAYROLL

WHY TRY TO BE A PAYE EXPERT? Watkinson Black can provide a cost effective payroll service, releasing you to concentrate on your business. **For further details please phone: 01925 413210 or e-mail: info@warringtonaccountants.co.uk**

(G*)

PEST CONTROL

PESTAWAY SOLUTIONS. All pest problems dealt with. Local lad. Competitive prices. All work guaranteed, 25 years experience. **Call now on 07823 338682 or 01925 755702**

(I9/14)

PLASTERING

LYMM PLASTERING & TILING

Time served Tradesman
Clean and reliable
Fully insured
All areas covered
No job too small

Brian Gaffney
Tel: 07967 087034
(anytime)

(I11/14)

PLUMBING

CL PLUMBING AND GAS SERVICES
Local honest plumber covering all aspects of plumbing and gas works. Boilers and central heating installed and repaired. Bathroom suites supplied and fitted. Cookers and fires fitted. Landlord gas safety checks. All plumbing emergencies - 24 hour call out. No job too small. OAP Discount rates. **Tel Craig 01925 819692 07851 405466 www.warringtonplumbingservices.co.uk**

(I2/15)

Gas Safe Registered Engineer

AndyGas of Lymm, specialist in:
Boiler upgrades, servicing, repairs to all domestic heating and gas appliances.
For a professional service call Andy
07753 838129 or 01925 753712

(I4/15)

RE-UPHOLSTERY

TRADITIONAL and modern re-upholstery. Dining chairs, headboards, 3-piece suites etc. Customer's own fabric welcome. **Tel: Orchard Soft Furnishings 756388.**

(I2/15)

TAXI / PRIVATE HIRE

Frazer's of Lymm

Private Hire Service • Good local rates
Reliable friendly service • up to five seater
Airport • Station Schools • Business
or pleasure for OAPs

Contact Nigel on 07812 674822

(I2/15)

TAXI / PRIVATE HIRE

Horn's
Airport Transfer & Taxi Specialists
CALL MARTYN: 01925 751761
MOBILE: 07881 786250

(G3/15)

TUITION

PIANO & KEYBOARD LESSONS in your own home. Experienced Music Teacher - all levels taught in the local Lymm area. Competitive Rates. **Tel: 01925 756189**

(I5/15)

PIANO/KEYBOARD LESSONS - beginners through to ABRSM Grade 5. Experienced teacher for all ages - young children to adults. Learn the piano and have fun! **Contact Jean on 07842 177571**

(I11/14)

PRIMARY TUITION: EXPERIENCED Primary School Teacher available for private tuition. Numeracy and Literacy. Available after School and weekends. **Call 01925 268627 or Mobile: 07843 607394**

(G*)

WINDOWS & GLAZING

NEIL COPELAND WINDOWS & Conservatories Ltd. Specialist in uPVC double glazing windows, doors, porches, conservatories, also fascias and guttering. FENSA registered. All work guaranteed. **Tel: 01925 756138 / 07961 361550.**

(I2/15)

DOUBLE GLAZING. For all your glazing requirements units including failed and misted units, broken windows, mirror fixing. UPVC doors and window frames. Kite marked to B/S. Time served glazier with over 30 years experience. **SP GLAZING.** For a friendly no obligation quote tel Sam Pendlebury on 01942 871859. Mob 07919 660296.

(I4/15)

MOTORING SERVICES

CAR SALES

PARKVIEW CAR SALES

We buy and sell QUALITY CARS
Best price paid
Telephone Peter on 01925 575737 / 07957 545479

23 Padgate Lane
Padgate, Warrington
Cheshire, WA1 3RS

(G*)

Lymm Life

offers a cost effective local **LEAFLET DELIVERY** service at competitive prices. We can also design and print leaflets with our in-house design team.

Call us now on
0800 955 5247



Give life back to your old kitchen!

With a kitchen make-over from Dream Doors

It's so easy! Not only will a Dream Doors facelift save you £1000s, but you will not have to suffer the stress, upheaval and mess that comes with a traditional refit. Dream Doors offers you a one stop shop for all your kitchen needs with a huge choice of doors worktops, sinks, taps, appliances and accessories.

- Free estimating, planning & design service
- Fitted kitchens or replacement doors & worktops
- Huge choice of doors, sinks, taps & appliances
- Worktops, including laminate, granite & solid surfaces

Book now for
fitting before
Christmas*

DREAM DOORS®

Est.
1999

NEW LIFE FOR OLD KITCHENS

Call now for a Free Design quotation **01925 211308**

Visit our Showroom: 92 Knutsford Road,
Grappenhall, Warrington WA4 2PJ

See our reviews at

Checkatrade.com
Where reputation matters

www.dreamdoors.co.uk

* T & C's apply, ask for details

Find
us on



Banner & Co

Independent Residential Sales and Letting Agent



Remember, remember...
a new house in November

01925 753636 www.bannerandco.com

Please note that if you have already instructed another agent, we would advise you to check any agreement you may have to ensure you are not liable for more than one commission by instructing us as your agent

