

Lymm

Life

FREE EVERY MONTH

May 2011
Issue: 146



Take a look!

**Back
on
the
bill!**

Page 3

Banner & Co

Independent Residential Sales
and Letting Agents

See our main advert
on the back page
for details

01925 753636

SPECIAL OFFER

Free Initial Consultation
and Tooth Whitening with



www.gavinismydentist.com

Quick LaBee Dental Solutions

T:01925 75 65 65

Slimming World

the club
with the
big heart!

Get hot dates at www.slimmingworld.co.uk

TUESDAY
Lymm Youth &
Community Centre
9:30am and 7pm
Tel: Vikki O'Donnell
07843 260612
0844 897 8000
www.slimmingworld.co.uk

**SAVE
£5**

**need family
law advice?**

call your local
legal experts

free legal clinic
monday 5pm-7pm

for
furness
divorce
religiously
and
family

01925 604713
www.fdrlaw.co.uk



**LYMM
PARISH
COUNCIL**

Approved by Lymm Parish
Council as the official
magazine for Lymm

**WIN A WEDDING
PACKAGE WORTH
£3,000**

See Centre Pages

Regular news updates at www.lymmmlife.co.uk

Editor

Gary Skentelbery

Production

Paul Walker

Business Manager

Tony Record

AdvertisingFreephone
0800 955 5247**Editorial**

01925 623630

Email

info@lymmmlife.co.uk

Websites

www.culchethlife.com
www.frodshamlife.co.uk
www.lymmmlife.co.uk
www.warrington.tv
www.warrington-worldwide.co.uk

Address

New Media Centre
Old Road Warrington
WA4 1AT

Lymm Life is published monthly
by Orbit News Ltd.

The contents of this magazine
are fully protected by copyright
and nothing may be reprinted
or reproduced without prior
permission of the publishers.

The publishers are not liable for
any statement made or opinion
expressed by third parties in this
publication.

Printed by TwentyFourSeven

Editor's Comment



A NEW board is being set up to ensure the future of the Oughtrington Community Association, which is great news for the local community.

The facility provides a lifeline in the area, especially for the many members of the Oughtrington Luncheon Club and the many other community users.

It is fantastic news that following on from all the improvement works which have been taking place that a new board will now ensure the future well being of the organisation and the building.

These days it is very difficult for volunteer and community organisa-

tions to find willing helpers, so it is great to see so many people have put their names forward to help support this popular facility.

Elsewhere in the village I note village centre road works are looming large again, this time on Rectory Lane and down to The Cross.

Lets hope it does not stop people visiting the village centre as our traders have lost enough trade in recent years due to a wide variety of road works.

It would seem that the council highway chiefs in their wisdom are also planning to close the Pepper Street car park for the duration of the roadworks, which will undoubtedly

have a huge impact on the village centre trade.

I would urge the council to review this situation, as I can not see the need to close the village centre car park during these works.

The village traders are the lifeblood of our local community and as always I would urge readers of Lymm Life to support our local trades people.

Finally I would like to wish Lymm Roundtable's Duck race every success.

This is one of those unique events which help make our community so special - so please try and get down into the village centre on Bank Holiday Monday and support this worthy cause.

**Have you got a story? Send your news items and pictures to
info@lymmmlife.co.uk or phone 01925 623630**

R + N STANHOPE Coal and Log Supplies

Best Quality Coal
Smokeless Fuel
Logs Supplied in Bags and Bulk
Peat Bricks
Open 7 Days
Broomeedge Farm
Burford Lane, Lymm WA13 0SE
Tel/Fax: 752830

Reflexology - Acupuncture
Herbal Medicine - Bowen Technique
Hypnotherapy - Physiotherapy
Osteopathy - Homeopathy
Colonic Hydrotherapy - Counselling
Psychossexual Therapy - Chiropody
MLD - Massage

Please call to find out more
Tel: 01925 730123

www.cheshirenaturalhealth.co.uk
Cheshire Natural Health, Seehive House, Tarporley Road, Siston, Warrington

CHERRY & GRIFFITHS

SUPPORTING YOU ALL THE WAY

Cherry and Griffiths
08448 223 623
CLAIM CONSULTANTS & INSURANCE LOSS ASSESSORS

**Household buildings
& contents**

**Commercial buildings,
machinery & stock**

Business interruption

High net worth

Antiques and fine art

FLOOD | FIRE | THEFT | STORM DAMAGE

**PEACE OF MIND
FOR THE POLICY HOLDER**

Too many cooks spoiling your insurance claim?

Twenty years ago, when a policyholder had a fire, he/she rang their insurer, a loss adjuster came round to see them, ultimately told the insurer how much money to pay the policyholder and they sent out a cheque. Things have since changed, unfortunately for the worse.

Geoff Williams, Director at Cherry and Griffiths reports "I was recently asked to go to help a relative of a business associate, an elderly gentleman who had had a fire in his house.

There was severe fire damage, with the entire upstairs requiring refurbishment, including a new roof, and virtually everything downstairs being ruined by extinguishing water.

When I went into the house I noticed in my peripheral vision, on a sideboard, many pieces of yellow A4 size paper with very large numbers written on them in black marker pen. At the time I did not think of nor therefore realise the significance of these.

During discussion with our client I indicated that I would speak to one of the loss adjusters involved, at which point my client said that he had the adjuster's mobile telephone number available. He then brought out a folder with many of these pieces of paper in them, including one with the mobile number of the particular adjuster. At this point I realised that my client had difficulty

with his vision and that the papers which I had seen downstairs constituted his personal telephone directory.

The fire had occurred about a week earlier. In his folder he had the phone numbers for the buildings insurers, the contents insurers, the office of the adjusting firm acting on behalf of the building insurers, the office of the adjusting firm acting on behalf of the contents insurers, the actual adjuster initially sent round by the building insurers, the more senior adjuster now dealing with the matter on behalf of the building insurers, the adjuster dealing with the contents claim, the head office of the restoration contractors appointed by the contents insurers, the local franchisee from that organisation who would be coming to see him eventually, the accommodation

bureau appointed by the insurers to find alternative accommodation, and a local letting agent recommended by the accommodation bureau. The poor old gentleman was entirely confused by all these different people being involved.

Quite simply I told him to write my name and telephone number down, which he did in his usual manner, and then explained that he could forget all the other numbers in his folder, and that my number was the

only one which he would need from this point onwards."

This is what we do. We simplify everything as far as the policyholder is concerned. We create a situation whereby a client has only one point of contact as opposed to ten to fifteen in the case of a domestic claim, and perhaps up to four or five at the opposite end of the spectrum, concerning a large commercial loss. We deal with all these various parties. We deal with the confusion and the hassle.

If you decide immediately after your disaster to go it alone, good luck. When you reach a situation where you need us to untangle the knots, please ring us. It's never too late to ask for help.

Geoff Williams ACII FCILA FUEI-ELAE - Director



Duck race back on the bill!

THE annual Lymm charity duck racing is once again on the bill this Easter Monday (April 25) thanks to the Lymm and District Round Table and event sponsor brolley.co.uk

The popular annual event takes place in Lymm village centre at the lower dam, with the race starting at 12.30pm.

A wide range of food stalls and children's entertainment will be open from 10.30am.

Dave Healey, organiser and Round Table member said: "We raised £3,000 for charity and local causes last year so the pressure's on to make this the best Duck Race ever.

"We're keeping our fingers crossed for a good day weather-wise and we encourage everyone from Lymm and beyond to come down and support this great community event."

Racing ducks are on sale by The Cross, Lymm, each Saturday preceding Easter Monday and they

can also be bought on the day. Normal ducks are priced at £1, with corporate ducks £30 and super ducks £60. The first duck over the line receives £100, second place £50 and third £25.

Alternatively, all types of ducks can be bought online at www.lymmduckrace.co.uk

This year's main sponsor is Brolley, who provide property and household services, however more sponsors and contributors are welcome.

Local businesses wanting a stall, should contact Dave on 07883 511721.

For more information on the Round Table visit www.lymmroundtable.co.uk or contact Chris Stephens on 07932 573 956 or info@lymmroundtable.co.uk



Main sponsor Jim Hallas from Brolley with Donald and Daisy Duck, aka Kevin Yates and David Healey - and front cover shows Donald and Daisy with youngster Katie Healey.

Anger over car park closure

LYMM Traders are furious about impending half-day closures of the Pepper Street Car Park while major road works go on for two weeks from April 18.

Roads affected are Rectory Lane and The Cross from the junction at the A56 Church Road to the junction at the A6144, The Cross.

Rectory Lane will be closed for resurfacing between Church Road and Pepper Street between 9.30am and 3.30pm.

The Cross, adjacent to The Stocks and the Pepper Street junction and the car park will be closed between 9.30am and 1pm.

Angry shopkeepers are urging people to protest to the borough council as they see no need for the car park to close and fear it will damage trade in the village.

No weekend work is envisaged and pedestrian access will be available at all times. Alternative routes will be signposted.

Sophies Soft Furnishings

Curtains • Roman Blinds
Cushions • Tiebacks • Poles
Tracks • Valances • Pelmetts

We design, make and fit to meet your exact requirements.

For free home visit or advice ring
Anne on 01925 754446

www.sophiessoftfurnishings.co.uk

Whites Sports
Warrington Market
1901 - 2001 - 100 YEARS OF EXCELLENCE

Specialists in:
Darts, Bowls, Snooker, Air Guns,
Walking Sticks, Warrington Town
Merchandise, Rugby, Cricket, Football

GIFT VOUCHERS AVAILABLE

Telephone/Fax:
01925 631531

The UK's No.1 Lawn Care Company

- Scarification
- Aeration
- Lawn Fertilising
- Weed Control
- Moss Control
- Water Conserver
- Pest and Disease Management

from as little as **£15**

Call in the professionals!

GreenThumb's annual treatments ensure your lawn looks lush, green and healthy. With prices starting from £15 per treatment, your lawn nightmare will soon be history.

Call your local branch today for a FREE lawn analysis and no obligation quote on:

01925 210669

Find us online at: www.greenthumb.co.uk

Rosebank Naturegarten, Pepper St, Lymm
a dream come true for you and your child.

- Home from home
- Extensive grounds
- Outside learning days
- Early Years/flexible sessions
- Full Day Care
- Children from 2 1/2 years

Did you always want to build dens, explore, do woodwork and gardening?
...make sure your child has a head start and a childhood to sing about with a setting that gives them real space to develop, learn and play.

Our new Scandinavian Log Cabin is the natural choice for your child with its custom design and outside areas. Most of all we really do cater for children's individual needs with all play being led or directed by qualified teachers.

"The diverse curriculum offers opportunities for children to develop their skills and find their strengths" (OFSTED)

Up to 15 hours per week may be FREE using Early Education Grants for 3 and 4 year olds.

We can also take babies and toddlers at The Rosebank Centre, our other Pepper Street nursery, which focuses on their specific needs.

Phone Sadie Hopley on 758959 to come and explore

MOOD
design solutions

One-2-One Social Media Training

Raise the profile of your business
and generate new leads

Introductory course £90
Covering Facebook | LinkedIn | Twitter

Tel: 01925 752500
info@mood-design.co.uk

Sophie's KITCHEN

Thank you to all
my loyal customers

It is with great regret that
Sophie's Kitchen is
now closed

Tel: 07957 325710

Dyslexia Unlocked

Spell words the way they sound?
Confuse words with similar ones?
Problems using capital letters
and punctuation?

These are typical characteristics of
dyslexia and can be successfully
managed allowing real potential to
be unlocked.

Contact Glynis Allen for further
advice or assessment.
01925 756141
Approved Teacher by the
British Dyslexia Association (AMBDA)

Cards by Samantha

Daytime & evening card making
classes for all levels

Saturday workshops

Stockists for all your card making needs

Hand made wedding stationery
made to order

10% discount following consultation

Tel: 01925 602848
www.cardsbysamantha.co.uk

P.E.T.S. ANIMAL SPA
Pet Grooming Specialists
20 years experience

Grooming from £10
Treatments from £5

We use products with natural ingredients
Blueberry Facial for Face Skins
Avocado Paw Treatment for Cracked Pads

07792 756 545 or 01925 750418
www.petsanimalhotel.co.uk

Lymm Duck Race

Bank Holiday Monday,
April 25 – 12.30pm

Childrens
entertainment and food
stalls from 10.30am

www.lymmduckrace.co.uk

What's On

May 8
LYMM HISTORY SOCIETY
Village Hall, Pepper Street, 8pm
Charles Foster
'17th & 18th century farming'

May 10
LYMM PARISH COUNCIL
Lymm Parish Hall, 7.30pm

LYMM LIONS GROUP
Meet: Bridgewater Club, Lymm
1st and 3rd Tuesdays of the month. 8pm
Contact: 0845 833 5729

LYMM THURSDAY EVENING BRIDGE CLUB
Lymm Village Hall every Thursday 7pm

MAPLE LODGE ART GROUP
Meet each Wednesday 9.30am - 12.30pm
Maple Lodge Guide HQ, Pepper St, Lymm
Details: 01925 755126

ROTARY CLUB OF LYMM
Meet every Wednesday at Statham Lodge Hotel
7.15pm for 7.30pm
Contact the secretary 01925 650189

LOVING HANDS
Knitting for charity at Lymm Methodist Church,
2nd and 4th Thursday each month.
1.30pm - 3pm. Details: 01925 823614.

MARKET LUNCHES
Eagle Brow Methodist Church
3rd Thursday in the month
Light lunches 12 noon till 2pm. All proceeds to
Age UK and YMCA Room at The Inn

LYMM SCOTTISH COUNTRY DANCE CLUB
St Mary's Church Hall
Second and fourth Fridays (Sept - May) 7.30pm
Details: 753853

LYMM BAPTIST CHURCH DROP-LUNCH
Higher Lane, Mondays (during term time).
12 noon to 1.15pm. £2.50

LYMM JUBILEE GARDENING CLUB
Meet Third Wednesday of the month
Lymm Baptist Church, Higher Lane. 7.30pm
Visitors welcome. £2 includes tea and cake

LYMM FLORAL ART GROUP
Lymm Village Hall
Third Monday of the month (except August)
at 7.30pm

LYMM ORNITHOLOGY GROUP
Lymm Village Hall, 7.45pm for 8pm,
Last Friday in the month (ex. June & July).
Guest speaker, Slide Show, Refreshments.
Visitors welcome. First visit FREE.
Also field trips. Details: lymmog.co.uk

in conjunction with
Lymm Parish Council

TAEKWON-DO
at Lymm Leisure Centre

New Beginners Classes
Children & Adults
All grades welcome

Call
07525 340284
www.taekwondo123.com
taekwondo-news@hotmail.co.uk

BOWL WITH HIGH LEIGH

JOIN THE FRIENDLIEST
CLUB AROUND!
BEGINNERS WELCOME
COACHING GIVEN

CONTACT: DAVID MAYNARD
ON 01925 754724
Visit: www.highleigh.org.uk

To appear on the What's On page please contact Lymm Life on 01925 623630

P.E.T.S. ANIMAL HOTEL
Setting New Standards in Animal Care
Luxury Style Boarding

Doggy Day Creche **Puppy Training Classes**
- Pick up & Delivery Service - Behaviour Management

To arrange a tour please ring
Fran Jennings on
07792 756 545 or 01925 750418
27 Burford Lane, Lymm, Cheshire WA13 0SH
www.petsanimalhotel.co.uk

Kids Planet – Beament
O'Leary Street
Warrington
Cheshire
WA2 7RQ
01925 630 879
Open 07:30 - 18:00

Kids Planet – Warrington
Ebenezer Chapel
Ebenezer Place
Leigh Street, Warrington
Cheshire WA1 1UL
01925 417 350
Open 07:00 - 19:00

Kids Planet – Lymm
29 Eagle Brow
Lymm
Cheshire
WA13 0NA
01925 759 220
Open 07:00 - 19:00

Kids Planet – Widnes
Kingway Learning Centre
Victoria Road
Widnes
Cheshire WA8 7QY
0151 257 7079
Open 07:30 - 18:00

Kids Planet
... A WORLD OF DIFFERENCE

We offer the world as seen through the eyes of a child.
We give the highest standard of day care and education creating a unique
home for home for our children.

- Flexible opening times
- Experienced and enthusiastic staff
- Ultra secure environment with CCTV
- Healthy nutritious menu
- Indoor and Outdoor play areas
- Excellent Ofsted Reports

www.kidsplanetdaynurseries.co.uk

Abbey Leys Farm Shop

Fresh Farm Food at its Best!

Organic Free Range Eggs • Goose and Duck Eggs • Pickled Eggs
Home Grown Potatoes • Fresh Fruit and Vegetables
Farmhouse Cheshire Cheese • Butter • Fresh Milk
Farmhouse Ice Cream and Lemon Cheese

Opening Times: 9.00am - 5.30pm Mon - Sat. Sun 10.00am - 4.00pm

ABBAY LEYS FARMERS' MARKET
First Sunday each month 10am - 2pm

Tim & Janet Harrison
753465
Peacock Lane, High Legh

rated #1
full service digital
design agency in
warrington*

CARPE DIEM
WEB // DESIGN // VIDEO // + MORE
+44 (0)1925 299 842 www.carpe-diem.co.uk

RAR+ TOP 100 AGENCY 2016

Divorce doesn't need to tear you apart

Caroline Payne recently joined the Betesh Partnership Solicitors family team and is now continuing their impressive reputation in Hale village.

Betesh established a family law team in 1948 and their reputation and experience supersedes them. Harry Lipson, Senior Partner and Sarah Brown, Solicitor are located in the firm's Manchester City Centre office however both are available to clients who wish to see them in the Hale office. Harry and Sarah have built a strong reputation surrounding a unique service that has proved to be invaluable in achieving superior results and a less stressful divorce for all involved.

Caroline says, "I was impressed by the ethos Harry and Sarah have incorporated into their service to clients. The same excellence will be delivered to clients from our Hale office. We understand that divorce is not just 9-5 Monday to Friday. We feel we have a duty and responsibility to give clients the support and advice that will always be in their best interests and enable us to achieve superior results. This is why we are careful to limit the clients we represent enabling us to offer them more than just legal advice. We want to be available to our clients whenever they need our support and guidance".

"In my experience I have learnt that the uncertainty of finances is a major factor in the stresses involved with divorce. We offer funding

arrangements to clients and in certain circumstances will agree to receive payment at the end of a case on agreed terms. We hope that this will go some way to alleviating the additional worry of having to pay for the divorce while dealing with all of the other emotional anxieties."

"With children frequently being involved in divorce and parents contact being a complex issue, I appreciate the need to be able to reassure my clients at all times. A high percentage of child handover happens outside office hours when difficulties can arise, this is why I am available to my clients immediately should circumstances change".

"I would often have a large number of phone calls on a Monday morning from clients when situations have arisen over the weekend and they have been waiting all weekend to be

able to contact me. I realised I needed to adapt the way I work to suit my client's needs and enable me to offer a more complete service. I consider this approach to be instrumental in the successful divorce settlements and court orders I have obtained for my clients. I have also seen the benefit this communication has had upon my clients in relieving their anxiety and preventing disputes escalating".

"We have a number of international clients due to the significance of a service like this. They can see the value and importance of being able to contact us at a time that suits them".

"We understand that the thought of divorce is daunting. This is why we also offer a free legal clinic to anyone who requires advice regarding initiating proceedings or you just want reassurance on your position in a family matter. The Family Legal Clinics are held every Wednesday from 5pm by appointment at our Hale Office".

"Our aim is to always provide a distinguished legal service combined with the understanding and flexibility needed to ensure the best possible outcome for our clients".



"Caroline has exceeded all of my expectations...not only a formidable lawyer but a pillar of support"

"Caroline's knowledge of family law is remarkable hence her reputation. The service she offers is outstanding. Caroline could not come any more highly recommended"

FREE LEGAL CLINIC EVERY WEDNESDAY 5PM TO 7PM BY APPOINTMENT

PAYMENT AT THE END OF YOUR CASE

Specialists in Family and Property Law.

Our Hale office is now open offering family law and conveyancing.

Residential and Commercial Conveyancing.

Full legal services available in Manchester City Centre office. Your local city law firm.

Hale Branch: 3A CECIL ROAD, HALE, ALTRINCHAM, CHESHIRE, WA15 9NY

TEL: 0161 926 1430 | **DX:** 14305 MANCHESTER 1

E: caroline.payne@bpslaw.co.uk | **W:** www.bpslaw.co.uk

**B
P
S**

**BETESH
PARTNERSHIP
SOLICITORS**

Established 1948



Two special events announced for Festival

TWO very special events have been announced for the 2011 Summer Lymm Festival

Ian McMillan and Tony Husband present "A Cartoon History of Here" on Friday July 1 at Lymm Baptist Church at 7.30pm involving comedy, cartoonery, poetry & improvisation! The event is suitable for audiences, 9 to 109 and involves a hilarious live-action cartoon of the community starring its friendly folks, fantastic fortunes, dazzling ambition and tenderest moments. The evening will be a fast-flowing, rapid-raffing adventure in which two top funny men reflect upon local stories, legends, rivers and romance. There is a chance to meet with Ian and Tony before the show. Join them for a reception and light supper at 6.00pm - limited places available. Tickets are £12 show only or £17 for meal and show.

Also appearing at the festival is renowned pianist Stephen Hough who will perform a Piano Recital on Sunday July 3 at Lymm United Reformed Church at 3pm. The internationally acclaimed pianist will be following up last year's sell out concert. The recital will be a reprisal of the concert he'll be playing in June in London at Wigmore Hall, and will include Beethoven's 'Moonlight' Sonata, Skryabin, Liszt's Piano Sonata in B minor, as well as his own brand new work Sonata for Piano (broken branches). Tickets are £15 (£5 Students) and refreshments will be available to buy during the afternoon.

For more information or how to buy tickets visit www.lymmfestival.org.uk, please note that a booking fee does apply for online ticket sales.

New bench for park

LYMM Parish Council has agreed to buy a picnic table for Ridgway Grundy Park to be sited near the Canal.

Cllr Ian Marks said, "The idea came from a local resident who said there should be a corner of the park reserved for senior citizens. He said the new play area was very popular but that part of the Park wasn't the right environment for older people to sit down and relax. What he and others wanted was a more peaceful place where his generation could sit and enjoy a view over the canal and the hills beyond.

"When I put this to the Parish Council we all agreed this was an excellent idea and we are currently choosing the most appropriate picnic table and bench."

The Complete Kitchen & Bathroom Service Village Designs

We design and install all types of kitchens and bathrooms. Our comprehensive service includes all trades:

Lighting • Tiling • Flooring • Decorating etc

One local company from start to finish

Visit: www.villagedesigns.co.uk or
Ring Jeremy on 07810 421243

Bramble Lodge Day Nursery
Birth – 5 years
Good quality childcare and education in a homely environment.
Next to Lymm High School
www.bramblelodge.co.uk
01925 757597
36 Oughttrington Lane • Lymm

BYTEWYSE COMPUTERS LTD
THE SMARTEST CHOICE FOR SYSTEMS & SUPPORT

- Custom built PCs to meet all requirements
- Full Windows 7 supply and support
- Free home delivery and installation with up to 24 months warranty
- PC repairs and maintenance
- Remote Access Support
- Networking and PC support contracts for small or home businesses
- Call us now on 01925 711338

www.bytewysecomputers.com

WE HAVE MOVED
9 Webster Court, Westbrook Crescent, Gerrards Business Park, Warrington, WARS 8WD

Thelwall Upholstery
FOR THE MOST COMPETITIVE RATES IN THE AREA
49 Knutsford Road, Grappenhall WA4 2NR
Call Sean on: 01925 604770 or mobile: 07799 228080
For all your upholstery needs
SPECIALISTS IN:
• Re-filling Cushions • Re-springing • Full Re-upholster
• Dining Furniture • Headboards
A wide range of sample books to choose from
All at competitive rates
PHONE FOR YOUR FREE ESTIMATES

FSB

HONDA
The Power of Dreams

CASHBACK
IT REALLY PAYS TO BUY A HONDA

With an unrivalled reputation for quality, innovation and reliability, a Honda has always been the lawnmower of choice.

Now with up to £400 cashback, we've made your choice easier than ever. Get a great deal more this spring, only from Honda.

£75 **£400** **£100**

Duttons Mowerworld
The Smithy, Chester Road, Warrington WA4 4AJ
01925 740217 www.duttonsmowerworld.co.uk

*New & Conditional supply. Available only to those with 2010/11 275 Cashback offer applied to their Honda. 2010/11 275 Cashback offer applied to 2010/11 275 and 2010/11 275. 2010/11 275 Cashback offer applied to 2010/11 275 and 2010/11 275. 2010/11 275 Cashback offer applied to 2010/11 275 and 2010/11 275.

Welcome to a proper bank



At Handelsbanken relationship banking still lives up to its name. With all key decisions made locally by us at the branch we are able to offer a highly personal banking service that is designed to meet your individual requirements.

We provide all the main services that high street banks provide, from day-to-day transactional banking, to the more sophisticated needs of the modern business. Our Individual Banking service is designed for high net worth customers who need a bespoke

offering with easy access to their manager. Putting the needs of the customer ahead of all else lies at the heart of everything we do. We tailor our current accounts, mortgages and loans to your individual requirements.

Chris Clarke
Karen McComb

Corporate Account Manager - Tel: 01925 575706
Individual Banking Manager - Tel: 01925 575708

1st Floor, 760 Mandarin Court
Centre Park, Warrington, WA1 1GG
www.handelsbanken.co.uk/warrington

Handelsbanken

Spread the word
ELLIS CLOTHING
IS NOW OPEN
IN STOCKTON HEATH

All your favourite brands in
 Clothing, Footwear, Bags and
 Accessories for
 Men, Women and Kids

ROXY QUIKSILVER 40

London Road, Stockton Heath
 Tel: 01925 210827

B.A.S.
 Bespoke Architectural Structures Ltd

Transform your living space or work
 place with specialist glazing made to the
 highest standard. Family based business
 manufacturing, supplying and installing glazing
 systems to the domestic and commercial
 market specialising in sliding folding doors:
 Call us now for a **FREE** no obligation
 quotation.

Best quality and service assured!

www.b-a-s.co.uk
 Tel: 01928 579957
 Unit 3, Sycamore Court, Manor Park, Runcorn. WA7 1RS

Landlord gives up his phone for Lent!

LANDLORD Stephen Taylor feels as though he is back in control of his life - after giving up his mobile phone for Lent!

Stephen, owner of Jets letting agency, which has a number of commercial and residential properties in the Lymm area, decided to give up his mobile phone for Lent.

He left a message telling callers not to leave a message as it would not be heard for 40 days and 40 nights!

All the money he saves from making phone calls will be donated

to Cancer Research and the British Heart Foundation.

He is also being sponsored by family, friends and colleagues.

"Lent is all about giving up something and when I said I was going to give up my mobile phone everyone laughed and thought I was having a joke."

"But I can honestly say I am enjoying the experience as a mobile phone can take over your life."

"Now when I call in at the office there is a list of messages to respond to and 90 per cent of issues are sorted before I even get to see them."

"I suppose it shows I have a good team of staff!"



SPORTS INJURY & ORTHOPAEDIC CLINIC

Conveniently located in the centre of Lymm Village

Physiotherapy treatments from... **£30**

Call now to book an appointment...
 Telephone: 01925 752333

Our team of highly qualified chartered physiotherapists use state of the art treatments and techniques to assist in the fastest recovery.

COMMON INJURIES TREATED:

- Spinal Injuries + Whiplash
- Low Back & Neck Pain
- Sports Injury Assessment
- Post Op Rehabilitation
- Knee Injuries
- Shoulder Injuries
- Sprains & Strains
- Hamstring & Groin Injuries

SKI SEASON HAS ARRIVED!

White Rooms can offer pre ski assessments and treatment for persistent injuries prior to your trip. White Rooms can also offer full assessment, medical imaging and treatment of injuries that you may pick up whilst away.

Knee Injury Treatment from... **£30**

Full Knee Injury Assessment + MRI Scan from... **£350**

We Have Moved To:
 The Old Courthouse,
 11-13 New Road,
 Lymm WA13 9DX

DIRECT ACCESS TO MEDICAL IMAGING:

MRI Scan from **£299**
 Musculo-Skeletal Ultrasound Scan from **£160**
 Ultrasound Injection Therapy from **£260**

The Old Courthouse, 11-13 New Road, Lymm WA13 9DX

www.whiteroomsltd.co.uk

PHYSIOTHERAPY - SPORTS INJURY - ORTHOTICS - NUTRITION - PERSONAL TRAINING - RADIOLOGY

Rugby club plan 'Posh Party on the Pitch'

As part of a summer of celebration, Lymm Rugby Club is holding the event of the year; a superb, exotic, and most importantly posh summer dinner dance in a massive marquee sited on the first team pitch on Saturday June 18.

'Posh Party on the Pitch' guests will be treated to a 'Commitments-style' 14 piece band called 'Soul Jam'. The night will be hosted by comedian Graham 'Grumbleweed' Walker, and include a three course meal and a free raffle for a large flat-screen telly.

The marquee will be home to a number of big events at the Rugby Club over a two week period in June. Mark Hesketh, the 'Posh Party' organiser said: "We had such a great reaction to our 50th anniversary 'do' in a marquee last year we decided to go for an even bigger better party this year.

"It will be the height of summer and we want to make this an annual event so we are going all out to make it a fantastic party for everyone - a great atmosphere with loads of fun and frolics."

All funds raised will go to the Lymm Grass Roots Sports Appeal.

To book tables of ten and smaller private parties, or to buy individual tickets, please call Colette Cartwright on the ticket hotline 07789 265447 or tickets can be purchased through the club bar, at £50 each.



Mark's novel success

FORMER Lymm resident Mark Gartside is celebrating a book deal with international publishers Macmillan just two years after writing his first novel.

His book "What will survive" is based in his home town and Mark says local readers will "recognise some of the pubs!"

Mark, a married father of two who is a senior executive with an international technology company, who writes in his spare time, has already written three novels, two for children and one, Whatever Else Is True, for adults.

His latest book, which secured him a two year book deal, is a dual narrative, one set in the 1980s and the other set in 2009-2010. Much of it takes place in Warrington.

Mark, who was a member of the Warrington Warriors Swimming Club and then went on to earn a blue for Oxford as captain of their Rugby League team, grew up in Lymm in the

80's and 90's and now shares his time in England and the US.

"What will Survive" will be published by Macmillan in Spring next year.

Set in Warrington it is the story of Graham and Michael, a father and son growing up together, told over a dual narrative over two decades.

Graham, stuck in the past and unable to react as the world changes around him, is trying to stop his son make the same mistakes he did, but as Michael becomes an adult Graham is forced to come to terms with the realities of the new world, his responsibilities as a father and his own past.

It is a marvellously funny, deeply moving look at class and parenthood in Britain from the eighties to the present day.

Mark's second novel, which is currently in progress, will be published by Macmillan in 2013.

**For ALL your plumbing
requirements**

**ROBERT KETTLE
PLUMBING & HEATING
SERVICES**

For a fast, local service
No job too small • Competitive rates
Free estimates • Senior citizens discounts

**Home: 01925 756685
Mobile: 07789514087**



oven
oven valeting service

- Range & Aga Specialists
- Ovens & Hobs
- Extractor Hoods
- Microwave Ovens
- Traditional Stoves

the UK's favourite oven cleaning specialists

oven.co.uk

...punctuality, pride, courtesy...

LET US HELP - PHONE NOW
01925 453377

Dental care with Jill Cooper BDS DPDS

...something to smile about

Providing quality, caring, affordable dentistry

Children receive free checkups and half price private treatment, when parents are patients

Check up same as NHS	£17
Metal Fillings from	£39
White Fillings from	£55
Professional Tooth Whitening	£199
Crowns from	£204
Dentures from	£230
Implants placed and restored	£1200
Clear braces from	£700

Tel: 01925 758616
152 Rushgreen Road, Lymm, Cheshire WA13 9QW
dental-care@btconnect.com



British
Dental Health
Foundation



clearstep



INMAN





Hunting for bunting!

AS part of the Lymm Festival preparations Su Williams has been leading a project to make enough bunting to decorate the local Trans Pennine Trail.

Last year a visitor to the Art Garden from Scotland, mentioned that their village had produced 2.5 kms of bunting so Su thought this would be a good community challenge for Lymm to work to decorate as much of the Trail as possible, which will be the site of the event, Dancing the Trail.

Team work has really come to the fore and local volunteers at the monthly senior social, held at Lymm and Youth Community Centre, have helped cut the fabric.

At the same time pupils from the Prince's Trust course at Lymm High School have been sorting the colours ready for their next task of actually sewing it together.

Anyone with scrap fabric or a willingness to get involved with this project please contact Su on 01925 75 4080.



**No time for cleaning?
We will take care of it!**

We always put our customers first.
Let us take care of your household chores.

Our services include:

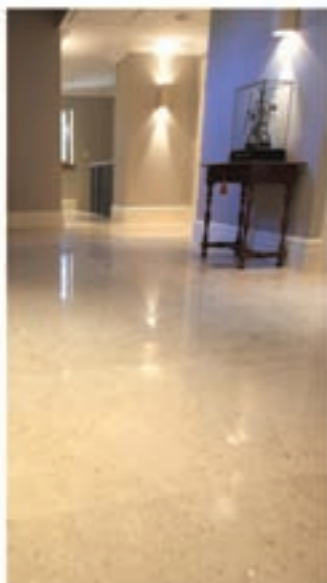
Domestic Cleaning, Building Maintenance,
Painting & Decorating

Call us now: 01925 321 317



**REAL
EARTH**

**TILE SHOWROOM
TRADE PRICES**



**NATURAL STONE TILES • WOOD FLOORING
BATHROOM SUITES • UNDERFLOOR HEATING
FURNISHINGS • FITTING SERVICE AVAILABLE
PORCELAIN TILES • INDIAN STONE PAVING**

Lymm Nursery • Rushgreen Road • Lymm • Cheshire • WA13 9PR
T: 01925 759 607 • E: info@realearthuk.com

Beach Confident

The popularity of Laser/IPL treatments for unwanted hair has increased hugely in the last 5 years. There have been a number of radical changes in the aesthetic industry and the consequent increase in incidents of long term/permanent scarring as a result of Laser/IPL treatments. The clinic practitioner should be able to present: Recognition by Care Quality Commission and Evidence of Laser/IPL training; preferably advanced. Personal Recommendation indicates that a clinic offering safe, effective, high standard treatments. No-obligation consultation, during which you will be informed about the treatment and have an opportunity to ask all your questions, will indicate that the clinic takes care of its clients and are not only after your money. Our clinic is celebrating 6 years and a 'no complaint' history this April. We offer free no-obligation consultations and our medical practitioner holds a BTEC advanced qualification in Laser/IPL treatment.



Hair Removal

- Completely safe
- Improves skin texture
- Treats ingrowing hair
- Long term clearance
- Doesn't irritate the skin
- You can shave any time

- Hair Removal
- Vessels Removal
- Rosacea Treatment
- Instant Slimming Packages
- Lipomassage by Endermologie
- Non-surgical Face Lift
- Ultrasonic Deep Skin Cleansing

OFFER:
1/3 price
underarms
when you book
a course for
full bikini

Book your **FREE** consultation on 0845 833 0667
www.laserina.co.uk
24a Washway Road, Sale M33 7GQ

**the
LASERINA
clinic**



same day smiles™

“ It has given me my life and my confidence back...Huge thanks to the **same day smiles™** team! I can't tell you how much this simple procedure has improved my life and how grateful I am that I have been given a new lease of life and an amazing new smile! ”

Claire - Hertfordshire

All-on-4™

The modern solution giving you 4 implants and fixed teeth in just one day

- Quality at an affordable price giving you a cost effective solution
- **same day smiles™** is the leading provider of All-on-4™ in the UK
- Treatment on your doorstep, giving you implants and new teeth in just one day
- The only scientifically proven and documented technique available using All-on-4™ implant dentistry
- **same day smiles™** uses the All-on-4™ technique which has a success rate of 100% for implant bridges
- We only use implants and components from Nobel Biocare the market leader in dental implants
- Nobel Biocare has more than 45 years of scientifically proven success in implant dentistry

With clinics located across the UK and a personal service tailored for each individual, we can help you achieve that lifestyle change you have only dreamed of until now.

to speak to one of our patient co-ordinators and book your FREE consultation call:

☎ **0845 508 1531**

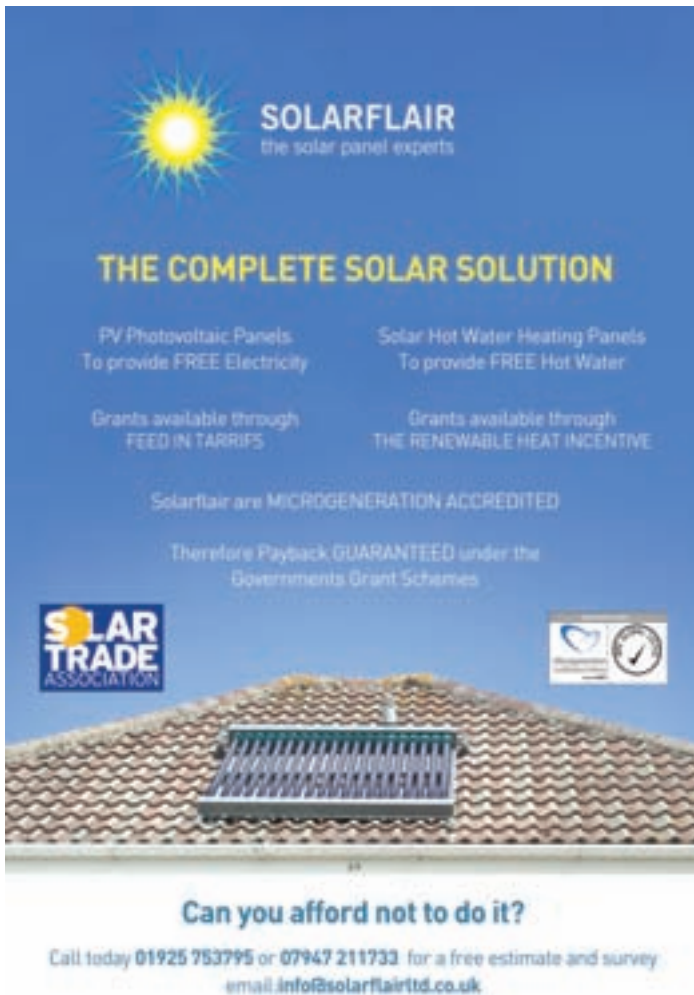
hello@samedaysmiles.co.uk | www.samedaysmiles.co.uk

what a difference a day makes™



**0%
finance
available**

*terms and
conditions apply



SOLARFLAIR
the solar panel experts

THE COMPLETE SOLAR SOLUTION

PV Photovoltaic Panels
To provide FREE Electricity

Solar Hot Water Heating Panels
To provide FREE Hot Water

Grants available through
FEED IN TARRIPS

Grants available through
THE RENEWABLE HEAT INCENTIVE

Solarflair are MICROGENERATION ACCREDITED

Therefore Payback GUARANTEED under the
Governments Grant Schemes

**SOLAR
TRADE
ASSOCIATION**

Can you afford not to do it?

Call today 01925 753795 or 07947 211733 for a free estimate and survey
email info@solarflairltd.co.uk

**Ready...
steady...grow!**

**Be ready for the new
season with the best
of everything for the
garden...at Fryers.**

Fryer's

More than a
GARDEN CENTRE

On the A50 one mile north of Knutsford
Telephone 01565 755455 www.fryers.co.uk

New board in place at community centre

A NEW board structure has been put in place at Oughtrington Community Centre with the intention of voting in these new members at the AGM on Wednesday May 18 at 7-30pm.

Current Chairman Andrew Wilson said: "We are delighted that so many new people have come together to form the new Board. We look forward to working with them to hand over the Centre in good shape and with sufficient finances to allow some great things to happen."

Should anyone have any questions or comments they wish to make regarding the formation of this new Board, please let the current Chairman know by e-mailing Andrew on wilsonlymm1961@btinternet.com

The new board structure is Chairman, Derrick Clarke; vice chairman, Alan Gibson; vice chairman, Steve Mee; treasurer, Jane Oakley; secretary, Sarah Barber; minutes secretary, Pat Benyon; bookings secretary, Rita Gibson; maintenance and H&S champion, Steve Walsh; fundraising / social / community champion, Sue Picton; friends champion, Paul Boland.

Co-opted from User Group Number 1, Jo Yellan; co-opted from User Group Number 2 (Joint), Joyce Pennington/Ray Milner; co-opted from User Group Number 3 (Joint), Clare Swann/Alison Waldron; co-opted from User Group Number 4, Val Oates; co-opted from User Group Number 5, Paul Gibson; co-opted from User Group Number 6, Alan Buckley; co-opted from LPC, Bob Barr.

Additional Board Members: David Morris, Steve Gladwin. Past chairman, Andrew Wilson.

Meanwhile work on the new roof is progressing well and is on course to be finished by mid May.

Finally the Hog Roast will go ahead again this year and it will be on Saturday June 18. Watch out for posters and details of tickets.

Hair and nail marathon raises £705

A 12-hour hair and nail marathon in Lymm raised £705 for a children's cancer charity.

The Hair Studio, in the village centre, opened from 10am to 10pm on its normal closing day and staff gave their time free of charge to raise the money.

A steady procession of customers - old and new - passed through the salon for blow dries, or nail file and polish, or both - with all the money going to the charity CLIC Sargent.

Proprietor Linda Rutter arranged the special day after hearing that the daughter of Tim, partner of senior stylist Kerrie, had cancer.

She said: "The charity has done so much to care for her, and so many other children, that we felt we had to do something to raise money for them."

"I would like to thank everyone who supported our marathon. It was hard

work, but it was for a good cause and was well worth it."

Staff who gave up their time to help Linda make sure the marathon was a success were Steph, Hannah, Andrea, Kerrie and Kerrie's Mum, Irene.



Grants available for complete solar solution

LYMM based Solar Energy Installer Solarflair are delighted to announce they are now Microgeneration Accredited Installers for Photovoltaic Electricity Generating Panels as well as Solar Hot Water Heating Systems.

This means Solarflair customers can qualify for generous grant schemes set up by the government which makes Solar Energy not only viable but a good long term investment.

Both schemes, the Feed in Tariffs for Solar P.V. Electricity and The Renewable Heat Incentive for Solar Hot Water have been designed to give tax free, index linked cash back every year, guaranteed for the lifetime of the scheme. This means that, based upon the competitive prices offered by Solarflair, each customer will see the panels paid for by around the half way time period of the scheme and then the cash keeps rolling in for the remaining period.

A standard Solar P.V. System starts from around £9,500 + VAT @ 5% to install and can generate returns of around £860 per year. The Feed in

tariff Scheme will run for 25 years which means payback in under 12 years and over 13 years of profit.

A standard Solar Hot Heating Water System starts from around £3000 + VAT @ 5% and will immediately qualify for a £300 grant and then from 2012 will qualify for a similar scheme over a 20 year period which will show payback at around 10 years and thereafter 10 years of profit. If you are interested, then please speak to Tim or Geoff on 01925 753795 or 07947 211733 for a free survey and they will give honest genuine advice on which technology best suits your house, budget or needs.



FOR SALE



SOLD

78 Cherry Lane, Lymm

Attractive period property in sought after location. The accommodation is split on three floors, on the ground floor, entrance hall, lounge, family room, dining room, downstairs bathroom, internal space/utility, first floor 3 beds, family bathroom, second floor 2 double bedrooms, garden and garage.

£459,950



NEW INSTRUCTION

12 Statham Close, Lymm

A well presented three bedroom link detached in a popular location. Property comprises of Entrance hall lounge, dining room, garden room, kitchen, utility and downstairs wc. Three bedrooms and bathroom. Enclosed rear garden, driveway and garage.

£329,950



SOLD

115 Bucklow Gardens, Lymm

A delightful five bedroom detached property over looking the green. Three spacious reception rooms, fitted kitchen, utility room and downstairs wc. Five bedrooms with an en suite to the master, and family bathroom. Double garage and driveway. Gas Central Heating and double glazing.

£499,950



NEW INSTRUCTION

1 Thirlmere Lodge, Lymm

A two bedroom luxury 1st floor apartment located in Lymm village centre. Briefly comprising of Entrance Hall, Lounge, fitted kitchen, bathroom and two bedrooms with en suite to master. Central heated and double glazed. Allocated parking.

£189,950

URGENTLY REQUIRED

Due to increasing demand and an extensive database of clients. We are urgently seeking new properties both For Sale and To Let.
Call For a Free market appraisal today.

TO LET



NEW

3 The Brow, Lymm

A luxury 2 bedroom 1st floor apartment finished to a high standard. Central heated and double glazed. Allocated Parking space. Furnished. Available from 14/5/2011

£895pcm



LET BY

4 Sycamore Drive, Lymm

A two bedroom semi detached property. Lounge, breakfast kitchen, conservatory, two bedrooms and bathroom.

£650pcm



REDUCED

2 Fieldways, Lymm

Spacious two bedroom ground floor apartment. Lounge/diner fitted kitchen two bedrooms and bathroom. Allocated parking and communal gardens available immediately

£475pcm



LET BY

24 Chaise Meadow, Lymm

5 Bedroom detached house, furnished/unfurnished. Available Immediately

£1,650pcm

19 The Cross Lymm Cheshire WA13 0HR T. 01925 756931 E. sales@ridgewayresidential.co.uk

The Lymm Life
Bride *of the* Year
COMPETITION

**Something old,
Something new,
Something borrowed,
Something**

Write the missing word
in the white box above, then cut out
the coupon and send it to
Lymm Life Bride of the Year

Competition
Lymm Life
c/o Orbit News Ltd
New Media Centre
Old Road, Warrington,
Cheshire WA4 1AT

Name _____

Age _____

Address _____

Post Code _____

T _____

M _____

Email _____

Proposed wedding date _____

Terms and conditions apply. No cash alternative. Lymm Life cannot be held liable for any of the prizes.

For a full list of the terms and conditions for the Lymm Life Bride of the Year Competition please write to: Lymm Life, c/o Orbit News Ltd, New Media Centre, Old Road, Warrington, Cheshire WA4 1AT or email info@lymm.life

Entrants may be contacted with information or carefully selected commercial opportunities from Orbit News Ltd or agents on their behalf. If you do not wish to be contacted with offers and opportunities please indicate by ticking the box.

☐

Image Credits:

Wedding gown: 'Vicky', by Alfred Sung @ Puure of Lymm

Photography: Andrew Collier Photography.

Hair: Anna Warburton.

Make-up: Danielle Deitch.



Our Special Bridal Beauty Packages
are tailored for you and your bridal party
from the list of treatments we offer

Facial Treatments, Body Scrub, Relaxing Massage,
Luxury Manicures and luxurious, Massaging Pedi
Spa Chairs, Waxing, Fake Bake Spray Tan,
Lashes and Make Up

Tel: 01925 757657
20 Eagle Brow, Lymm,
Cheshire WA13 0LJ

The Cheshire Set
Nail Lounge



HIGH LEGH PARK
GOLF CLUB

The Perfect Venue
to celebrate Your Wedding

Package One: £2200 +Vat
40 People - Wedding Breakfast and Free Champagne
80 Evening Guests with a Buffet Meal • Free Room Hire
Other packages available, please call for details

Tel: 01565 830012
Email: sbarnes@highleghpark.com www.highleghpark.com
High Legh Park Golf Club, Warrington Road, Knutsford, Cheshire WA14 0WA

Last chance to enter Lymm Life Bride of the Year

THERE is still time to enter the Lymm Life Bride of the Year competition when one lucky couple have the opportunity of a life time to walk away with prizes worth almost £3,000 towards the cost of their wedding day in this easy to enter competition.

Using the adjacent form simply fill in the missing word and your contact details or alternatively email your details with the missing word to info@lymm.life.co.uk titling it Lymm Life Bride of the Year competition.

The winner will receive a photographic album and pictures to the value of £1,000 kindly donated by Andrew Colliery Photography, a wedding dress worth £1,000 kindly donated by Puure Bridal and 15 per cent off the cost of venue at the Lymm Hotel, plus dinner bed and breakfast for two nights prior to the wedding total value £900.

The lucky winner will be drawn from a hat on Friday April 15th and announced in next month's edition of Lymm Life.

The Editor's decision will be final.

Lace and feathers for the big day

THE trends for the current wedding season have to be lace and feathers, says Angie Connelly from Lymm's Puure Bride on Eagle Brow.

Angie said: A lot of girls are wanting their day to be different and a vintage style wedding is very popular at the moment.

"Lace fits perfectly for a vintage themed wedding and a lot of the lace dresses we have at Puure Bride for 2011 are inspired from the early 20th century with a modern twist.

"The 50s is also the inspiration for a lot of brides this year with the resurgence of the tea length dress.

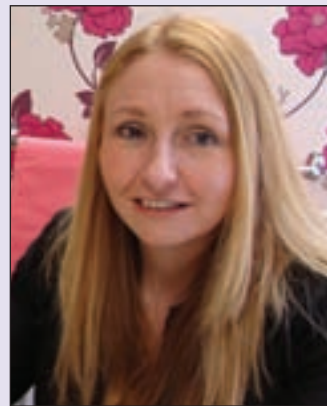
"Feathers are also massive this year for the bride who truly wants to stun. Here at Puure Bride we have caught on to the trend and have the most fabulous beaded corset with feather skirt dress. When we put it in the window we quite literally stop traffic!"

For bridesmaid colour trends Angie thinks pastel colours will make a massive comeback this year, with soft dusky pinks and sage greens fitting in the vintage theme and bold purples are still strong for the more dramatic look.

"At Puure we are really excited and

to meet the demand of the brides we have just taken on a new bridesmaid supplier and gowns will be in store by June 2011.

"Our new range will come in any fabric and 70 colours, so our brides will be spoilt for choice," added Angie.



ARCHES

Rainbow Wedding Shoes
01925 751977
18 Eagle Brow, Lymm
www.archesshoesbags.co.uk

Looking for the Perfect Wedding?

Contact Stockton Heath Travel
Wedding and Honeymoon
Holiday Specialists
01925 269400
or call in to see us at
80 London Rd, Stockton Heath

Sunday 24th April

Easter Sunday Lunch, includes an Easter Egg for the children £14.50pp, children 10 - 3yrs half price, under 3 go free

Thursday 12th May

Wine Tasting, £2.50pp on going towards our in house charity Make a Difference which includes Princess Trust for Carers, Place 2 Be, Chernobyl Children Life Line, Blythswood Care

Friday 13th May

Murder Mystery Evening and Disco, 3 course dinner £25.50pp - with accommodation £32.50



Tel: 01925 752233
Whitbarrow Road, Lymm WA13 9AQ
www.macdonaldhotels.co.uk/lymm
general.lymm@macdonald-hotels.co.uk



Xross interiors

16 the cross lymm cheshire wals olu

01925 758298

xrossinteriors@live.co.uk

Unique Wedding Gifts Available

Come and see our Home and Gifts department

curtains • blinds • carpets

vinyls • poles & tracks • giftware

design and consultation for your new home

FOUNTSMEYER

Xross Interiors

Gift Vouchers Available



branches

of warrington

Oak, Pine, Ash and Painted Finishes
Bedroom, Dining, Occasional and Home Office




**FURNITURE
CLEARANCE**

Massive Clearance

on ranges that will soon be discontinued
25% off the already reduced price,
but only while stock last

Easter Weekend Only

(Good Friday 22nd, Easter Saturday 23rd and Easter Monday 25th April)

Stock Clearance Event at our warehouse,
of old/slightly damaged/one-off items at
Giveaway Prices - Not To Be Missed.
Please note that we are closed on
Easter Sunday



Wilderspool Causeway (A49), Warrington, Cheshire, WA4 6QP
Tel: 0800 5427447 www.branchesfurniture.co.uk



Warburton House ready for business

WORK has now been completed on Warburton House on Eagle Brow, offering brand new luxurious bespoke offices.

The high quality air conditioned office suites are now available to let in the centre of the village with a prominent location that commands views both over the village and the canal.

The development includes a new luxurious retail shop unit.

The building, while inkeeping with the character of the area, has a modern contemporary design with a luxury glass entrance with oak stairs leading to all office space.

Municipal free parking is within walking distance and visible from the rear of the building.

Jets are the the letting agents for the building.

Letting agency owner Stephen Taylor said: "A fast and personal service is central to everything we do, offering residential and commercial sales and letting to individuals and businesses in the area.

"We pride ourselves on getting deals complete and can also help with legal and finance issues, including free mortgage advice."

Meanwhile Jets are now offering unique Boutique apartments in the village centre, designed and furnished to the highest specification, making the ideal location for a weekend or mini-break in the village.

"I spent four very happy years living in Lymm," said Stephen. "I want to see the village centre continue to thrive and be a place people want to come and visit."

Springtime



**2 for
£20.00**

Buxus Ball

£14.99 each



**Save
£50.00**

NORMAL PRICE £199.99

3 Seater Hammock (Cappuccino)

£149.99 each



**Save
£20.00**

NORMAL PRICE £29.99

Black Kettle Barbecue

£9.99 each



**2 for
£10.00**

Hardy Fuchsia

2 litre pot

£6.99 each

Offers available until 15th May 2011 or whilst stocks last.
Subject to availability. Prices correct at time of print.

High Legh Garden Centre

High Legh • Knutsford • 01925 756991

www.strikes.co.uk





Warburton House owners Eric and Bridget celebrating the setting of the date stone in Warburton House - 2010.

Drive In boost for children's charity

MORE than 90 members of High Legh Park Golf Club enjoyed seeing their new Captains make the traditional Drive In signaling the start of their year of office.

John Caslin has taken over the reins from Gary Mercer as Men's Captain, with David Thompson as Vice Captain.

Carol Robinson has taken over from Helen Jarvis as Ladies' Captain, with Cathy Lees as Lady Vice Captain.

Meanwhile James McCarty has taken over from James Coffey as Junior Captain.

A sweep was held on distances driven and nearest the pin, raising nearly £500 for the club's chosen charity of the year, the Children's Adventure Farm Trust (CAFT).

Julie Gray, from CAFT, talked to the members about the work of the charity based in nearby Little Bollington. The Children's Adventure Farm Trust provides a much needed holiday break for children who are either

terminally ill, disabled or disadvantaged and their families. Julie showed a short film about some of the children having a magical time at the farm.

After the golf presentations, everyone enjoyed a traditional

Sunday roast carvery which is available every Sunday to members and non-members.

The 2011 captains are looking forward to a busy and successful year, both on and off the course, with plenty of competitions, social events, and fundraising for CAFT.



Bowling club seeks new members

HIGH Legh Bowling Club is looking for new members of all abilities.

The club's home is a picturesque, floodlit green, just off the A50 and opposite the Victorian High Legh Village Hall, famed for its homemade Sunday teas.

Bowling at High Legh was originally indoors at the village hall but the green - now often used as a neutral venue for important matches and occasionally as a county venue - was developed in 1989.

The club has something to offer players of all abilities and ambitions

It has 10 league teams, seven of which are mixed, competing in leagues at Knutsford, Norley and Trafford on four evenings a week and on Tuesday and Thursday afternoons.

Social bowling takes place on Wednesdays, weekends and, informally, at any time when the green is not in use for a team match.

Members come not just from High Legh but from a wide area including Appleton, Grappenhall, Knutsford, Lymm, Mere, Stockton Heath, Walton and Warburton.

Beginners are welcome and there will be plenty of advice on hand and more often than not, after playing there will be a cup of tea and biscuits or a tempting cake or scone awaiting in the excellent clubhouse.

More information is available from secretary David Maynard, on 01925 754724 or email at davidjmaynard@gmail.com

Play Golf at one of Cheshire's secret gems



2011 Fees:

7 Day: £745
5 Day: £600
7 Day Joint £1300
5 Day Joint £1090

No Joining Fee

2011 Opens:

Mixed Open: July 10th
Ladies Open: July 19th
Seniors Open: August 4th
Junior Open: August 12th

For further details visit the website

Twilight Golf after 6.00pm for just £10 Green Fee - until 1st September

Tel: 01565 830012 Email: sbarnes@highlegHPark.com www.highlegHPark.com
High Legh Park Golf Club, Warrington Road, Knutsford, Cheshire WA16 0WA

May Day Music Festival

COTEBROOK Home is staging a May Day Music Festival from 2pm-6pm on Monday May 2.

The Cotebrook Open Air Festival is being sponsored by local music venue The Venue and will feature the best talent from the local music scene and

be hosted by local comedian Steve Roe.

There will be a barbecue and bar and six different bands.

The event is ticket only with prices £5 Adult, £15 Family, £3 Concessions and are available at The Venue, Lymm, Rushgreen Garage and Cotebrook.

Enquiries: Please contact Ann on 07709595401

Alan and Betty celebrate 60 years together

LONG-time Lymm residents Alan and Betty Roberts, both aged 81, celebrated their Diamond Wedding with a party for family and friends.

The couple moved into Wetgate Lane Farm, Heatley more than 40 years ago.

Previously they lived at Grappenhall where they ran a milk-round, covering a wide area of Lymm, Grappenhall and Thelwall.

They have four children, son Andrew - who now runs the farm - and daughters Lesley, Pamela and Susan.

Seven grandchildren and five great grandchildren make up the rest of the family!

Alan, a former Artillery man and member of Grappenhall Ex-Servicemen's Club, and Betty, are both 81.

Alan said: "We have had an interesting life. We bought the farm because it went well with our dairy business.

"It was always hard work, but we enjoyed it."



Vikki shares her life-changing experience

VIKKI O'Donnell, 42, wants to share her own life-changing experience with others.

She said: "I know how it feels to feel trapped in a body that doesn't feel like your own and I want to help others achieve their own weight loss goals."

Vikki is the new Slimming World consultant in Lymm - after herself losing more than two stone with the group.

She piled on the pounds after having three children, but she found a new lease of life with Slimming World and now runs her own class on Tuesdays at Lymm Youth and Community Centre, at 9.30am and 7.30pm.

Vikki said: "I had always had a tendency to put on weight but things got really out of hand during and after pregnancy. I know I was eating for two but you'd have thought I was expecting a whole football team!"

At Slimming World she immediately felt better - enjoying the good, healthy eating on offer.

"I couldn't believe how much I was eating. I was never hungry and still the pounds were just melting away like magic!"

Call Vikki on 07843 260612

Cotebrook OPEN AIR Music Festival

MAY DAY BANK HOLIDAY
Monday 2nd May 2011
2pm - 6pm

Hosted by local comedian **Steve Roe**

and featuring **The best talent from the local music scene**

TICKET ONLY Sponsored by **THE VENUE**

Bring your own picnic and gazebo

6 Different bands

Bar • BBQ • Side Stalls • Bouncy Castle

Tickets £5 Adult, £15 Family, £3 Concessions
Available from The Venue, Lymm and Rushgreen Garage, Cotebrook.
For Further Information please contact Ann 07709 595401

Swimathon success

THE Rotary Club of Lymm held a charity Swimathon at Lymm Leisure Centre Swimming Pool.

The day was a great success with all teams entered having a good time, good exercise and raising money for their own charities and the Rotary Charities.

This is the first time the event has been held and afterwards President Martin Dunkley said "Although the number of teams was lower than hoped for, valuable lessons were learned and in future we would hope for even more success."



The Dolphin Team from the 4th Lymm Scout Group receiving their award certificates from President Martin.

Car boot sale

LYMM Rotary Club is holding its annual car boot sale on Sunday May 8 and is encouraging people to book spaces.

The event, at Townfield Lane, Lymm, will be from 7am to 1pm.

Pre-booked spaces are £8, and the fee is £10 on the day. Further details are available from Don Smith 01925 754108.

Money raised by Rotary on the day will go to its selected charities.

Festival to witness 'The Greatest Show on Earth-ish!'

Following his huge success in 2010 with MAM, I'M 'ERE! Simon Plumb, the Lymm-based playwright and impresario has announced his forthcoming summer production, a circus-style spoof entitled 'The Greatest Show on Earth-ish!'

Set to run for three nights from June 21-23, and as part of the Lymm Festival, this new musical comedy will be performed in a huge marquee located on Lymm Rugby Club's first team pitch.

Based on the fall and rise of Music Hall Variety, 'The Greatest Show on Earth-ish', follows the trials and tribulations of Mick Karno, the northern impresario, as he struggles to put his next 'Summer Spectacular' together.

"I am not sure Lymm will have seen anything quite like this. The marquee will be in place for a couple of weeks and Lymm Rugby Club kindly offered me the opportunity of producing a summer show. I am keen to bring a new and exciting theatrical experience to Cheshire."

Brilliant

"For those who know my productions I promise everyone a brilliant night out full of laughter, great singers and cheeky fun. Once I heard there was a marquee the idea of a circus-style spoof seemed a natural choice.

"As ever, audience participation levels will be high and everyone will enjoy the mixture of comedy, singing, Mexican lion tamers, scouse clowns,

low-wire, juggling and dodgy magic and ventriloquist acts."

There will be a fully seated auditorium including a bar and the full

theatrical experience. This show is suitable for children aged 14 years and over, with tickets at £16 each.

For tickets email boxoffice@communicadocreative.co.uk, call 01925 755590, or for on-line ticket sales, go to www.lymmfestival.org.uk



Impresario and writer Simon Plumb with Charlie and Jimmy, who will all be appearing in 'The Greatest Show on Earth-ish!'

PRIMROSE HILL NURSERIES

Now is the time to bring in your Hanging Baskets for refilling or order new baskets for the summer!

Caring Family Business

Open 7 days a week

*Warrington Road,
High Legh,
Knutsford,
Cheshire
WA16 0SQ*

**Telephone
01925
752635**

61—67 Knutsford Rd,
Warrington
Cheshire,
WA4 1AB

Tel : 01925 445455

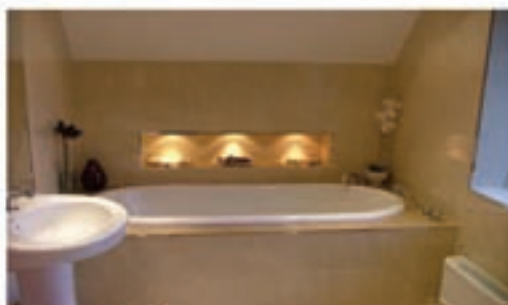
Classic Home Improvements

Established 1987

Everything You need Under ONE ROOF!

Unit 3, Bold Ind Est,
Lunts Heath Rd,
Widnes,
WA8 5RZ

Tel : 0151 420 1666



Fireplaces
•
Wood Burning Stoves

Kitchens
•

Bathrooms
•

Bedrooms
•

Granite Worktops



All Installations Project Managed with 2 Year Guarantee!

3D Design & Plan Service - Granite Worktop Specialists

www.classichomeimprovements.co.uk





Beechwood Industries Ltd
Garden management solutions



FREE Lawn Care*



Our Services include:
Garden Maintenance • Lawn Care • Garden Design
Landscaping • Construction • Paving • Tree Surgery

Contact your horticultural experts on
07749 253308 or 01925 860544
www.beechwoodindustries.co.uk

*Free Lawn Care - For Full Maintenance Customers only

Free taster sessions

LYMM Golf Club is once again running a free golf taster session specifically for women who may have often thought about golf in the past but have never done anything about it.

Lady Captain, Jackie Booth said: "Whether you are an absolute beginner or a novice, have never picked up a club, or have a basic knowledge, come down and see us. "You will be made very welcome."

The session will be held on Saturday April 30 between 2.30 pm and 4.30 pm and is suitable for ladies of all ages who are looking to try something new, increase their

fitness and extend their social network.

Participants will be able to try their hand at putting/chipping in a relaxed and friendly environment with tips and advice from members. Equipment and refreshments will be provided.

For more information and to reserve your place please contact Jackie on 01925 469565 or Sheila Byrne on 01925 753236.

Dickensian day funds new cooker for Scouts

THE 4th Lymm Scouts received £620 from the Lymm Dickensian Committee as the proceeds of the street collection organised by Lymm Rotarians on Dickensian day.

The money will go towards replacing cooking equipment used by the scouts in their dynamic programme of activities.



L-R: Martin Dunkley (President of Lymm Rotary Club), Simon Fathers (Leader 4th Lymm Scouts), Duncan Lancaster, Steve Williams (Lymm Round Table)




Full Membership
We have reduced our joining fee to £100. This means that you will save £500 to become a full member of one of Cheshire's leading golf clubs.

Trial Membership
Want to look at us first? Then join our very successful trial membership scheme. This offers three months membership for £100 plus a green fee of £10 each time you play. When you convert to full membership the £100 and all your green fees will be credited back to you helping to reduce your first years fees.

INTERMEDIATE MEMBERSHIP
All 20-30 year olds know how tough it is financially these days and we have introduced a sliding scale of fees to help anyone in this age group.

LADIES TASTER DAY
A ladies open afternoon will be held on 30th April at 2pm. All interested lady golfers and beginners are welcome.

Contact Andrew Scully
01925 755020
membership@lymm-golf-club.co.uk

Whitbarrow Rd, Lymm,
Cheshire WA13 9AN
www.lymm-golf-club.co.uk



See the difference

Independent | Individual | Friendly | Professional

10 reasons to use Egertons to sell your property

- Personal, attentive and speedy service from partners and team at all times
- Completely independent, no head office
- Free market appraisal **all year round**, not just occasionally
- Distinctive 'For Sale' & 'To Let' boards to attract potential buyers to your property
- Your sign can be erected and your property marketed within 24hrs
- Promotion of your property on 4 property websites plus our own
- No vast inflation of your asking price just to get your business & no hidden extras
- No sudden dropping of your asking price within a few weeks of instruction
- **Open Sundays and most Bank Holidays** because that's when people have time to look for property
- Commission fee based on your **selling price** not on the original asking price

RESIDENTIAL PROPERTY FOR SALE



Quayside Mews, Lymm

Affordable spacious family accommodation.
Very central.

NO CHAIN

£294,950



Whitefield Grove, Lymm

A well-presented family home.
New roof, Jacuzzi bath, corner plot.

NO CHAIN

Less than £230,000

PROPERTY SOLD



Victoria Gardens, Latchford

SOLD STC
to a 1st time buyer in only 5 weeks!

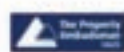


Kingsway South, Latchford

Very spacious, 4 beds, ideal for room letting. Possible
earning potential up to £1000 per month.

£155,000

24 The Cross, Lymm, Cheshire | 01925 759042 | www.egertonsestates.com
Email info@egertonsestates.com



Motoring

Who needs artificial potholes?

TWO harsh winters have wrought havoc with local roads and potholes have become big news. So it may come as a surprise to some that there is a need for artificial potholes.

Who needs them? Car manufacturers, of course!

An example is Ford's Lommel Proving Ground in Belgium where there are miles of test track that specifically re-create potholes and the other sorts of damaged road surfaces drivers can expect to encounter.

Ford engineers know that not all roads are created equal. Some are pockmarked with potholes. Others simply consist of merciless off-road-like tracks. Only a few roads are kind to the vehicles driving over them.

Engineers know that too many drivers speed over four-inch-deep potholes or take turns too fast on cobblestone roads.

So Ford simulate road conditions ranging from the moderately rough roads to be expected in the UK, Europe and the US to the severely rough roads in emerging markets, taking into account that weather conditions can make these roads even worse.

Public spending cuts have added to the problems caused by the two cold winters so Ford aim to ensure all their vehicles are built to cope.

All new Ford models are put through a tough testing and development process to ensure they not only offer class-leading levels of ride, comfort for occupants but are easily capable of withstanding the

loads placed upon components by damaged road surfaces.

The Lommel Proving Ground subjects new vehicles to a variety of highly demanding road surfaces and features some 50 miles of test track, many of which are designed specifically to put suspension systems to the ultimate test.

"We have created some of the worst potholes in Europe on our own test track. If our cars can pass these tests, then they can cope with almost anything they encounter on public roads," said Eric-Jan Scharlee, technical specialist at Lommel. "You name the road surface - we have it at our proving ground."



Alfa's sporty Giulietta

THE latest incarnation of the Alfa Romeo Giulietta was launched last year to celebrate the Italian car manufacturer's centenary.

As one would expect from Alfa, it's a sporty model, designed to compete in the mid-size C-segment which now contributes one out of every four new cars sold across Europe.

It incorporates a range of advanced engineering and technical solutions to ensure the Giulietta can

meet the needs of all customers in the sector, combining impeccable safety credentials, Italian style, comfort and functionality and, of course, oomph!

In addition, every customer can adapt the car to their specific driving requirements, thanks to Alfa's DNA selector.

There is a range of five engines, three petrol and two diesel, all of which are turbocharged and Euro 5 emissions compliant.



UNIPART  CAR CARE CENTRE

**FREE Local Pick-up
& Drop Off Service**

 **AUTOSAFE**
Quality Assured



Agden Park Motors



Park Garage A56, Agden Brow, Lymm

5 Star

workshop facilities
for servicing and repair

**Over 300
tyres**

at competitive prices!

MOT Testing

petrol & diesel



BODYSHOP
01925 752235



**AIR
CONDITIONING
REGAS/SERVICE**

BIG ENOUGH TO COPE . . . SMALL ENOUGH TO CARE!

Contact ALLAN or GEOFF on 01925 752447

Dining Out with Lymm Life

at Bowden's Bistro and Wine Bar

A LITTLE bit of Lymm's history has been recreated in Bridgewater Street - in more ways than one.

Dave and Lyn Forshaw have brought life back to the former bistro, lovingly restoring a building that has been a landmark in the village for more than 250 years and firmly putting it back on the food and drink map.

They've also renamed it Bowden's Bistro and Wine Bar, taking the name from some 60 years ago when the same premises was a greengrocers run by the Bowden family. Inside, they have created several delightful eating areas - including a terrace overlooking Slitten Gorge.

But more importantly they are serving superb food and fine wines and re-establishing the bistro's reputation as one of the top local eating places.

We were impressed by the range of starters and main courses on offer.

Eventually opting for soup of the day and a selection of mushrooms, sautéed

with garlic and served on a toasted croute, we found both starters superb.

We then chose Steak Diane, rump steak, sautéed with French mustard, onions, mushrooms and red wine sauce, and rump of Welsh lamb, slow cooked in a port wine jus, both accompanied by a good selection of fresh vegetables and potatoes. Again we found both meals well presented and cooked exactly as we had requested.

Bowden's offer a superb range of steaks, chicken, fish, lamb and vegetarian dishes and have a delicious range of lighter meals at lunchtime, Wednesday-Sunday, with traditional roasts on Sundays also available.

The quality of the food is bringing people back on a regular basis - which means booking is always advisable.



EAT A STARTER AND MAIN COURSE AND GET A PUDDING FREE

Our new menu offers traditional pub food and some more modern dishes too!

Easter Week:

Friday 22nd Fish Friday, traditional and contemporary dishes and Jonathan Kent award winning singer, Buble and Rat Pack at 9pm

Saturday 23rd, William and Kates Stag and Hen Night with disco and right Royal Nosh up. Dress to party.

Sunday 24th, Easter Sunday, Traditional Sunday Roasts

Monday 25th, Lymm Duck Race Day

Friday 29th, The Royal Wedding - watch it on a huge screen. We will be serving our Middleton Ale to mark the occasion.

Spread Eagle, 47 Eagle Brow, Lymm, Cheshire, WA13 0AG
Tel 01925 757467 Email spreadeagle@jwlees.co.uk



BE YOURSELF

BOWDENS

Bistro & Wine Bar



Bowdens Bites

Served Wednesday-Sunday 12 noon to 3pm
No booking necessary

A la Carte Menu

Served Tuesday-Saturday 5pm to 9.30pm

Traditional Sunday Lunch

Served 12 noon to 5pm

Bowdens Bubbles

Friday 5pm to 7pm

Champagne & Sparkling Wines 25% off per bottle

We would like our Bistro to be your Bistro

Tel: 01925 754852

16 Bridgewater Street, Lymm WA13 0AB

www.bowdensbistro.com

The Venue

Thirlmere Lodge, Rectory Lane, Lymm WA13 0AQ

The Best Free Entertainment In The North West!

Discounted drinks all night Monday

Our famous 'Open Mic' Night
every Tuesday from 9pm

Karaoke, FREE Curry & 2 for 1 cocktails every
Wednesday (Curryoke Night!)

Live acoustic music every Thursday and Saturday

Happy Hour

Sun-Thurs 6-8
Fri & Sat 5-7

Late Bar til 12pm
Thursday, Friday and Saturday

Available for private functions
every afternoon and all day Sunday

Great selection of Wine and Draught Beers from around the world:

**Carling • Boddingtons • Dunham Massey
Big Tree Real Ale • Magners Cider • Amstel**

Wi-Fi Hotspot

Come along
and get online
for FREE

Now serving Freshly Cooked Pizzas from
Elmas Restaurant and Curralls award-winning pies

Visit our website:

www.thevenue.lymm.co.uk



Tel: 01925 756393

Lymm Osteopathic Practice

Established 1979

SUZETTE PULMAN, N.D. M.R.N. D.O.

Registered Naturopath & Osteopath

DARREN HAYWARD, B.Sc. (Ost)

Registered Osteopath

We are both registered with The General Osteopathic Council (GO.Sc.)

Open Monday to Saturday

Tel: 01925 752264

The Rise, 16 Grammar School Road, Lymm WA13 0BQ
(Easy Access Road Parking)

Registered with all major insurance companies

adcottopticians

eye my local
collaboration opticians



FREE
eye tests for
children under
16 and people
over 60yrs

14a The Cross, Lymm WA13 0HP | Tel: 01925 757075

Cutting Edge

Family, Friendly, Unisex Hair Salon

Sharon and her team provide quality hairdressing for both men and women in a friendly salon with easy free parking. Sharon provides gentlemen's and boys cuts through to ladies and girls hairdressing including a full range of colour treatments.



Now selling Bed Head products

- Full head foils inc. Cut & Finish from £59
- Bridal Hair & Party Hair from £25
- Cut & Finish from £23
- Gentleman's hair cut from £5
- Children's hair cut from £7

Thank you
to all our clients
for supporting us
through our
refurbishment

Ring to make an appointment 01925 752735
Ample free parking 77 Whitesands Road Lymm WA13 9LJ

REEDHOUSE



Refurbished kennels fully centrally heated/airconditioning

Please call and view anyday between 3pm and 5pm

New home care service available

Dog walking facility Large spacious cattery

Have a look at our new website: www.reedhousekennels.co.uk

Please Call Alan or Alison on 0161 941 5699

Gorsey Lane, Warburton

Lymm Electric & Hardware

EST 1974

**Electrical Goods
Repairs • Rewires
Alarms • Security Lights**

NICEIC approved electrical contractors

Dyson/Vac repairs & Service

All work guaranteed

01925 755252

12 Bridgewater Street, Lymm, Cheshire

Want to save money?

Join the club!

(over 350,000 people already have)



- ✓ Guaranteed savings!
- ✓ Save 25% on your household bills
- ✓ Award-winning customer service
- ✓ Which? Best Buy - Phone and Broadband Bundles Feb 2010
- ✓ UK's cheapest line rental
- ✓ Free Global Calls*
- ✓ 'Triple Value' guarantee on gas and electricity
- ✓ Cheapest online shopping
- ✓ 1000's of High Street retail partners
- ✓ Earn CashBack on shopping and petrol

For full details contact:

0800 955 5247

New Media Centre, Old Road, Warrington WA4 1AT



Charges, terms and conditions apply. See www.club.co.uk for full details.

Mobile Spa Spring Offers!

Full range of beauty and holistic treatments
All in the comfort of your own home
Appointments 7 days a week, day or night

Call, email or see website today for further details

Tel: 07985 599 533

www.tigerlilytreatments.co.uk

info@tigerlilytreatments.co.uk



Reader's Letter

Please send your correspondence to:
Lymm Life, New Media Centre, Old Road, Warrington WA4 1AT
or email: info@lymmlife.co.uk

Car parking in Lymm

Viv Harrison, Lymm

I am sure that I speak for the majority of people in Lymm when I say how much better it is being able to park in Pepper Street car park since pay and display was introduced but I do wonder if the traffic officers are being too officious.

The other week, I went out for lunch in Lymm with some friends. I had used my car because I had given a lift to a friend who had had a hip operation less than two weeks earlier. As we were paying the bill, one friend rushed off as she realised her 2 hours in the car park was nearly up.

She arrived 2 minutes late to find a parking ticket on her car. I followed more slowly with my friend on crutches to find I had also received a ticket for being 4 minutes late. I did write to Warrington to explain the situation but they were totally unsympathetic.

I am sure that the cafes of Lymm do not want people to stop coming into the village for lunch but if the traffic officers are waiting around at lunchtime, as one was on the day I went in by car, waiting for people to be late, then I think people will take themselves out of Lymm for lunch.

Welcome to Lymm

Maureen & Joseph Arnfield, Clayton-le-Moors

WE visit Lymm twice a year as house sitters and always enjoy our stay. Everyone makes us so welcome, we like walking and call in for a cup of tea either at the Sanctuary Cafe or the Community Centre. We were very impressed with the couple in the community centre, who told us all about the fund raising everyone does to keep the building going.

We thought they were amazing and all the other volunteers who help in any way they can. We try to visit the farmer's market and any other fundraising that takes place. What a lovely community and thanks for making us so welcome.

Affordable homes plan thrown out

A CONTROVERSIAL plan to build affordable homes on the fringe of the Green Belt at Lymm has been thrown out by a planning inspector.

The scheme involved three properties on land in Longbutt Lane, - opposite the entrance to Grammar School Road. It caused a storm of protest from nearby residents and was originally denied planning consent by the borough council.

An earlier scheme for the same site, involving a shop, was also rejected by planners. The inspector who dealt with an appeal by the applicant said the site was conspicuous from a public footpath along its north western boundary and also from Longbutt Lane and Grammar School Road.

It had more visual affinity with open countryside than with nearby houses and the three proposed dwellings would look like an encroachment into the country and would be harmful to the Green Belt. There was an objection from the Environment Agency, on the grounds that proposed culverting of a stream on the site would lead to an increased risk of flooding and also destroy wildlife habitats.

Highways chiefs expressed concern about increased road safety hazards, due to the narrowness of Longbutt Lane.

Obituary

Mrs Gwendoline Wilson

THE funeral has taken place of Mrs Gwendoline Emily Wilson (nee Shufflebotham), of Orchard Road, Sandy Lane, Lymm, who died on March 14 aged 97.

Mrs Wilson died in Thelwall Grange Nursing Home.

In her younger days she helped with the children at Little Bollington School. She enjoyed meeting friends at the Wednesday Club and was a member of the Mothers Union and enjoyed worshipping at St Peters



Church, Oughtrington.

She leaves a sister Betty.

Funeral arrangements were by John Burrows and Sons of Lymm.

Established 1878

John Burrows & Sons

Independent Family

Funeral Directors

M. G. Tandy

J. A. Tandy

16 Higher Lane, Lymm

Tel: 01925 752501

Meet your MP David Mowat

David Mowat, MP for Warrington South, holds regular surgeries throughout the constituency. If you would like to arrange an appointment to discuss an issue of concern to you please e-mail him at david.mowat.mp@parliament.uk or telephone 01925 231267.



David Mowat
Member of Parliament
for Warrington South

www.davidmowat.org

Produced by David Mowat MP,
House of Commons, London SW1A 0AA

THE NEW MEDIA CENTRE
OLD ROAD, WARRINGTON WA4 1AT
01925 240247
info@247print.net

twentyfour
seven
design & print ltd

10,000
A5
FULL COLOUR
£248.00
PAY FOR 1 SIDE
GET THE OTHER
SIDE PRINTED
FREE

500
FULL COLOUR
Digital Business Cards
(Buy 1 set, get 1 set free)
£35.00

60"X40"
FULL COLOUR POSTERS
ONLY £12.00 EACH

100
A3
£38.00
FULL
COLOUR
POSTERS

*ALL PRICES ARE SUBJECT TO VAT

CLASSIFIED

Call 0800 955 5247 to advertise

ACCOUNTANCY & BOOKKEEPING

LYMM TAX SERVICES

Are you a business in need of a new accountant?

New chartered accountancy practice opening in Lymm to serve local small businesses

Low rates, high standards

Accountancy, tax, VAT, payroll and bookkeeping

Contact
jane@lymmtax.co.uk
Tel 07759 051788

(18/11)

AIR CONDITIONING

CLIMATE CONTROL BY WARRINGTON based 4 Seasons, for offices, shops, surgeries, schools, homes and conservatories like yours! Installed in a day guaranteed 5 years. Keeping you cool when it's hot and warm when it's not. www.4sac.co.uk 01925 756620

(6/11)

BATHROOMS

The Bathroom Refurbishment Co.

We can create the Bathroom of your dreams
One Warrington based Company
One Job from start to finish
Unique 3D virtual CAD design system
Please visit our website
www.bathroomrefurbishment.co.uk
Please Ring Wayne
01925 826 828 or
07976 574 828

(6/11)

LYMM KITCHEN & BATHROOM PROFESSIONAL INSTALLATION. Ceramic wall & floor tiling. For free estimates and advice contact **Rob Evans** on 01925 752623 business or 07763 770408 mobile. Est 2002. Local references provided

(19/11)

BUILDING SERVICES

BIG DIG Groundworks

Flagging, Block Paving, Garden walls, Fencing, Patios, Drives, Foundations. For free estimates call Mob: 07934 563 266 or Tel: 0153 424 5452 www.bigdiggroundworks.co.uk

(18/11)

BRICKLAYER AVAILABLE for garden walls, pointing etc. Tel: 01925 755441 Mobile: 07966 491624

(16/11)

DM BUILDING - All types of building and property maintenance work undertaken. Extensions, patios, tiling and plastering. For a free quotation call Derek on 07912 033601

(18/11)

CARPETS, CURTAINS & INTERIORS

CURTAINS, CARPETS, VINYLs, blinds, wall paper, top brands including Harlequin, Jane Churchill and Casadeco. Made to measure by friendly knowledgeable staff. Free carpet uplift and removal with any new carpet purchase. **Xross Interiors, The Cross, Lymm Tel 01925 758298** or email xcrossinteriors@live.co.uk

(6/11)

CUSTOM-MADE curtains and loose covers. All accessories supplied and fitted. Made-to-measure blinds. Our fabric or yours. Tel: Orchard Soft Furnishings 01925 756388.

(12/12)

CARPETS, CURTAINS & INTERIORS

Paul Bains Flooring Solutions Ltd

Carpets, Wood, Vinyl, Laminates

Domestic & Commercial
Supplied & Fitted

Family business covering all aspects of flooring including domestic & contract locations

Uplifting of old flooring can be arranged

Moving of furniture by arrangement

Limited disruption from start to finish

Check website for previous installations

www.paulbainsflooringsolutionsltd.co.uk

Office: 01925 758835
Mobile: 07973 376224

(17/11)

CARPET CLEANING

A1 STAINBUSTERS: Fully guaranteed carpet and upholstery deep dry cleaning. Clean & dry in only ONE hour. Quotes for both commercial and domestic. Contact the Local expert **John Latham** on 01925 205210 or 07765 314080

(10/11)

SAFE CLEAN: SAFE ORGANIC CLEANING. Specialists in cleaning all leather and fabric upholstery, rugs, carpets and curtains in situ. Ask about our new organic allergy relief system, Guardsman stain protection plans and carpet repairs. **Richard Vaal** on 0808 144 8178

(10/11)

SIMPLY THE BEST CARPET CLEAN YOU WILL EVER have. Cleaners UK Ltd. Est 23 yrs. Have your carpets & sofas beautifully deep cleaned leaving them fresh smelling & colour restored. Latest & best methods. Dry/steam. Professional, reliable & affordable. For more info call Neil Riley on 01925 264989/07831 336060 www.cleaners-uk.net

(12/11)

CENTRAL HEATING

GAS SAFE REGISTERED ENGINEER. Andy Gas of Lymm, specialist in: Boiler upgrades, servicing, repairs to all domestic heating and gas appliances. Professional service. Tel Andy on: 07753 838129 or 01925 753712.

(12/12)

CHILDREN'S ACTIVITIES

TUMBLE TOTS is the leading national physical play programme for children, classes available in Knutsford Hale & Bowden. We can be booked for private parties. Contact Jane on 07812-144450. www.tumbletots.com/sale

(15/11)

CHILDREN'S THERAPY

JANE FAY, REGISTERED PTUK PLAY Therapist for children with behaviour or emotional problems, sleeping problems, anxiety, withdrawn, frequently angry, suffered bereavement/loss, ADHD, on autistic spectrum. Tel 07703 661126 www.playtherapy4children.co.uk

(19/11)

CLEANING SERVICES

arleys angels

- Spring Clean Specialists
- Presenting your home for sale
- Moving house
- After building work cleans

01925 266834
because you're worth it!

(6/11)

CLEANING SERVICES

SIMPLY THE BEST CARPET CLEAN YOU WILL EVER have. Cleaners UK Ltd. Est 23 yrs. Have your carpets & sofas beautifully deep cleaned leaving them fresh smelling & colour restored. Latest & best methods. Dry/steam. Professional, reliable & affordable. For more info call Neil Riley on 01925 264989/07831 336060 www.cleaners-uk.net

(12/11)

COMPUTERS

Having Trouble With Your Computer?

Running too slow?

Want to upgrade... go wireless?

Call for experienced engineer

Tel: 07974 448 165 or 01925 751 546

(12/12)

DELIVERY SERVICES

FURNITURE FERRY LIGHT REMOVALS. Collections arranged from Ikea, Costco and other stores, garden centres, auctions etc. You choose, you buy, I deliver - SIMPLE. Reliable, inexpensive service. Tel: Matt 07970 178 333 or 01942 732768. www.furnitureferry.co.uk

(15/12)

TnM Couriers - specialists in urgent UK same day deliveries, international and UK next day services available, contract work undertaken, parcels to pallets, no job too small or too big, competitive rates. Call 01925 639029.

(6/11)

ELECTRICAL CONTRACTORS

PAUL LEWIS ELECTRICAL SERVICES. For extra sockets/lights, main board upgrades to full rewires, no job too large or small. No call out fee. All work guaranteed. Tel 01925 758337 or 07966 386806. Est 24 years.

(18/11)

EVERGREEN ELECTRICAL CONTRACTING. NICEIC approved contractor. For lights and sockets to rewires, fuse-box upgrades. Qualified electrician. All work is to the latest IEE wiring regulations. No job too small. Most major credit and debit cards accepted. Tel: David on 01925 724219 / 07971 407022.

(16/11)

TRUST PROPERTY ELECTRICAL SERVICES. NICEIC Part P Approved Contractor. All Electrical work undertaken. Inspection & Testing & PAT Testing. All work certified & guaranteed. Call Tim on 07754409906 or 01925 601055

(16/11)

EQUESTRIAN

LYMM RIDING SCHOOL. Learn to ride with friendly atmosphere, group lessons or private. Horses/ponies well schooled. Lessons from £10, we offer tests with pony club cert, please ring for more details. Training for pony club. **Rebecca Bennett** Reg. A1. 01925 750435. Mob 07778 866006.

(12/12)

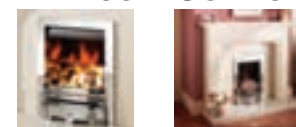
EQUESTRIAN SUPPLIES & ANIMAL FEEDS

STABLES SADDLERY. EST. 1964. Good stock of all equestrian supplies and animal feeds. Lots of interesting and unusual equine and canine collectables. Tel: Barbara Williams on Lymm 752762.

(18/11)

FIRES & FIRE SURROUNDS

Quality Fireplaces at Affordable Prices WARRINGTON FIRE SURROUNDS



Fires, Fireplaces, Marble
Best Prices

Quality Value Service Guaranteed

01925 417731

www.warrington-fires.co.uk

8 Lovely Lane, Warrington
(follow signs for hospital)

(6/11)

FOR SALE

MONNINGTON AND WESTON small modern style piano. Very good condition. Overstrung. £375, can deliver. Tel Mr Palmer, piano tuner on 01942 510 806

(16/11)

GARDENING SERVICES

A F GARDEN SERVICES

REGULAR MAINTENANCE
TURFING, SOFT LANDSCAPING
CLEARANCES, POWER WASHING
HEDGE PRUNING

07796 818 686
0161 928 1722

www.afgardenservices.co.uk

(6/11)

LOCALLY BASED

Beechwood Industries Ltd
Garden Management Ltd

- Garden Maintenance
- Lawn Care
- Landscape Design
- Construction
- Paving
- Tree Surgery
- Free Assessment
- Free Consultation

Contact us on:
07749 253 308
01925 860544
www.beechwoodindustries.co.uk

(6/11)

FOUR SEASONS GARDEN SHOP. Excellent selection of perennials, shrubs, bedding, hanging baskets and much more! Excellent quality and even better prices! Free parking! Near Northwich CV8 2EB. Call 07792313460

(17/11)

J C SLAVIN
Landscapes & Garden Maintenance

Flagging • Driveways • Tree/Hedge Pruning
Garden Clearance • Fencing • Landscaping

01925 756 839
Mob: 07599 747 373

(18/12)

JDS
LANDSCAPE & GENERAL BUILDING SERVICES

Garden Design • Driveways
Patios • Garden Walls • Fencing
Decking • Resin Bond Driveways
See website for examples

Tel: 01925 754883 Mob: 07515 907735
www.jdscreate.co.uk

(18/11)

LAWN DRAINAGE AND SOIL AERATION. No trenches, no drainpipes, no digging, no repairs, no hassle. If this interests you Contact **Bob Harper** 01925 266852 or 07952 608701.

(19/11)

M J NEEDHAM LANDSCAPES Award winning with over 15 years experience. All aspects of landscaping, specialist in bespoke construction. Qualified design service available. Contact 01925 825 645 or 07888 730 383

(19/11)

Would you like peace of mind on your gas and electricity prices?
Join the Club!

Our unique 'Triple Value' guarantee:

1. For your gas, we guarantee our prices will always be cheaper than British Gas, whenever you buy in the UK.
2. For your electricity, we guarantee our prices will always be cheaper than the prices charged by the regional electricity supplier for the area where you live.
3. And for your complete peace of mind we guarantee our prices will always remain competitive compared with the cheapest standard tariffs available from the 'Big 4' suppliers.

For full details, contact:
0800 955 5247

And with no minimum contract, it's risk-free.

Save 23% on your household bills by switching to ASK HOW!

- Single bill for all your utilities
- Award-winning customer service
- Value that's unbeatable
- Easy to switch

THE UTILITY WAREHOUSE

CLASSIFIED

Call 0800 955 5247 to advertise

GARDENING

NEED HELP IN YOUR GARDEN?
All types of garden services
from only £10Professional, reliable service with
20 years experienceCall Richard
07802 51263 or 01925 750418
www.randrtreeservices.com

(13/11)

SIMPLY GARDENS CONSULTANCY offers
maintenance and design advice; maintenance
schedules; planting plans; expert plant selection; on-
site training. Regular or occasional maintenance can
be arranged. Call **Graham** on **01925 766873** or
email **gard.cott@btinternet.com**

(13/12)

GATES

Village Gates
SPECIAL OFFERS NOW ON
Manufacturers and installers of
quality timber gates
villagegates.co.uk
01925 766629 or
Mob 07588 457145
Charmack Road, Culham WA3 3SH

(07/11)

HANDYMAN

Handyman Services
Home, Office & GardenGutter Cleaning, Repairs & Replacement
Welding Repairs & Fabrication
Fascias, Soffits & Windows
Patio & Driveway Cleaning
All Garden Work, Flagging,
Fencing & Turfing
Interior & Exterior Painting
Plumbing & General DIY
*You Name It - No Job Too Small!*Tel Neil: **01925 757905**Mob: **07813 201850****handymanserviceslymm@hotmail.co.uk**

(05/11)

HAIR & BEAUTY

PROFESSIONAL MOBILE hairstylist, creative
cutting, colour/correction, including foiled
highlights. Tel: **Lorraine 01925 755441 / Mob**
0786 7910805.

(19/11)

Mobile Beauty Therapist Phoebe Elizabeth,
Facials, Manicures, Pedicures, Aromatherapy
Massages, Waxing, Pamper Parties, all in the
comfort of your home Tel **07932 990 031**, visit
www.PhoebeElizabeth.co.uk

(08/12)

HYPNOTHERAPY

MICHAEL MAHONEY clinical hypnotherapist for
IBS, Stress, Anxiety and many other problems.
Medical Research project experience, BUPA
Service Provider. For **FREE** information sheet
please email **TimelineServices@aol.com** or
ring **01925-658322** **www.healthyaudio.com**

(6/1)

IRONING SERVICES

Carol's
Ironing services
NEXT DAY PICKUP
& DELIVERY SERVICE
Lymm
Tel: **01925 767945**
Mob: **07979 948197**

(07/11)

KITCHENS

LYMM KITCHEN & BATHROOM
PROFESSIONAL INSTALLATION. Ceramic wall
& floor tiling. For free estimates and advice
contact **Rob Evans** on **01925 752623**
business or **07763 770408** mobile. Est 2002.
Local references provided

(19/11)

LOCKSMITH

CHESHIRE LOCKSMITHS LTD UPVC Door
Specialist. Non Destructive Entry Service. Free
Quotations. Lymm Based Business. Contact
Tony 07774 805 588.

(14/12)

JEWELLERY

evans & co
Jewellery & Watchmaking
Jewellery Workshop
39 London Rd, Stockton Heath,
Warrington, WA4 6SG
Quality repair, remounting,
design work and setting finished to
a high standard.
Loose certificated diamonds and
gemstones supplied.
Stockists of fine contemporary
British Swiss and German jewellery.
Tel: 01925 269292

(11/11)

JOINERY

SPM JOINERY, 25 years experience. All aspects
of joinery, garage conversions and extensions.
Good rates, quality work and free estimates. Call
01925 754950 or **Mob 07920 837852**

(05/11)

OPTICIANS

ADCOTT OPTICIANS. State of the Art opticians
in the heart of Lymm Village. Comprehensive
sight tests and a wide choice of spectacles
tailored to you, whatever your budget. **01925**
757075

(10/11)

PAINTING & DECORATING

ANTHONY MASON PAINTER AND decorator
Over 25 years experience. Neat, clean, reliable
service. All aspects including papering, paint
finishes, colour advice, signs and furniture
painting. Tel. **Tony Mason: 07962532811.**

(08/11)

N & K DECORATING SERVICES, High Class
Professional Decorators, Paper Hanging
Specialist, Internal and External works
undertaken, Lymm Based Company, Free
Quotations. Call **01925 759936** or **07783**
068377.

(14/12)

KJM PAINTERS QUALIFIED PAINTERS AND
decorators with over 25 years experience in all
aspects of interior and exterior work. Contact
us on **mob 07738 556 807** tel **01925 810428**

(08/11)

PAYROLL

WHY TRY TO BE A PAYE EXPERT? Watkinson
Black can provide a cost effective payroll service,
releasing you to concentrate on your business. For
further details please phone: **01925 413210** or
e-mail: **info@warringtonaccountants.co.uk**

(6/1)

PHOTOGRAPHER

BRENDA GREEN ABIPP. Qualified professional
photographer for People, Environmental
Portraits, Weddings, PR, Special Occasions.
Established 30 years. websites. **www.brenda**
green.co.uk **www.brendagreen @demon.co.uk**
Tel. **01925 753580.**

(15/11)

PICTURE FRAMING

EDGAR ART & FRAMING, 19b The Cross
Lymm. Picture framing, original art, jewellery,
gifts and greetings cards. (Turn right at The
Terrace Brasserie & Cafe and right again at the
far end). Tel **01925 754700.**

(06/11)

PLASTERING

B.E.A. PLASTERING
OF LYMMFull rooms plastered • Skimming
Bonding • Stud walls built
All repair work large or small
Tyroleaning/RenderingCall David anytime on
01925 753966 or 07786 245068**www.beaplastering.co.uk**

Member of the Guild of Master Craftsmen

(08/11)

PLASTERING

LYMM
PLASTERING

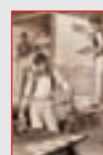
Time served Tradesman

Clean and reliable

Fully insured

All areas covered

No job too small

**Brian Gaffney**
Tel: 07967 087034
(anytime)

(11/11)

PLUMBING

PB PLUMBING. All domestic and commercial
work. Fitted bathrooms and tiling. Small jobs
welcome. Free quotes. Fully insured. C&G
qualified. Gas Safe Registered **Call 0161 928**
3253 or 07821 554867 or Freephone 0800
824 7747 or visit www.pbplumbing.co.uk

(07/11)

Plumbflow Ltd
Plumbing and Heating ServicesAll plumbing & gas
installation/repairs
boiler replacement/servicing
bathroomsCall today for a **FREE QUOTATION****01925 468003****www.plumbflow.com**

PIANO TUITION

VISITING 1-2-1 PIANO/KEYBOARD TUITION.
Experienced open minded tutor. 100% exam pass
rate (60%+ merit/distinction). Flexible informal
approach. First 5 lessons half price till January 2011.
Call **Tony Hopkins (Dip ABRSM) 0161 973 0312**
or **mobile 07591 696388.**

(08/11)

RE-UPHOLSTERY

TRADITIONAL and modern re-upholstery. Dining
chairs, headboards, 3-piece suites etc. Customer's
own fabric welcome. Tel: **Orchard Soft**
Furnishings 756388.

(12/12)

SITUATIONS VACANT

GARDENER REQUIRED - seasonal hours max 2
days per week, would suit active retiree. **Laskey**
Farm, Thelwall. 07785-262478.

(05/11)

TAXI / PRIVATE HIRE SERVICE

Frazer's of LymmPrivate Hire Service • Good local rates
Reliable friendly service • up to five seater
Airport • Station Schools • Business
or pleasure for OAPsContact **Nigel** on **01925 754426**
or **Mob 07812 674822**

(12/12)

LARRY'S CARS. Airport transfers and private hire.
All UK airports covered. Over 10 years experience in
the Lymm area. Call **01925 755060. Mob 07989**
342179 or email **anthony.grace@bt**
connect.com

(08/11)

Silverfox Private HireBlack, discreet 5-seat Chrysler Voyager
for all occasions: Airport Transfers, Corporate
Travel, Contract Work.**Any destination. Professional,**
reliable service Tel: 07964 194150

(06/11)

TREE SURGERY

R & R Tree ServicesTree Surgery • Pruning
Hedges • Ground Clearance
Professional Service, Fully InsuredCall **Richard Jennings**
07802 512263 or 01925 750418
www.randrtreeservices.com

(08/11)

TUTORS

CHESHIRE TUTORIALS offers tuition. Primary to
'A' level. Tutors especially primary maths, science
and English welcome. Tel: **01925 758296.**

(03/12)

FRENCH OR SPANISH TUITION for conversation,
exam preparation or business. Learn a new
language, improve your language skills or prepare
for your GCSE or 'A' Level exams. Contact:
Suzanne on **01925 759597** or **07790 965250**

(09/11)

TV - SATELLITE

AERIALS 2000 of Lymm. No job too small. All work
guaranteed. Aerials and satellites supplied and
fitted. Sky subscriptions available. OAP reductions.
Sky Digital / On Digital. 7 days a week. Tel: **01925**
753427. Mobile: 07712 632315.

(11/11)

WINDOWS & GLAZING

NEIL COPELAND WINDOWS & Conservatories Ltd.
Specialist in uPVC double glazing windows, doors,
porches, conservatories, also fascias and guttering.
FENSA registered. All work guaranteed. Tel: **01925**
756138 / 07961 361550.

(12/12)

SP GLAZING for all your glazing requirements,
double glazed units including failed and misted
units, broken windows, mirror fixing. Kite marked to
B/S - Time served glazier with over 30 years
experience. For a **friendly no obligation quote** tel
Sam Pendlebury on **01942 671859. Mob 07919**
660296.

(10/11)

MOTORING
SERVICES

CAR SALES

PARKVIEW
CAR SALES
We buy and sell
QUALITY CARS
Best price paid
Telephone Peter on
01925 575737 /
07957 545479
23 Podgate Lane
Podgate, Warrington
Cheshire, WA1 3RS

(6/1)

To advertise
Call FREE
0800
955
5247

Banner & Co

Independent Residential Sales and Letting Agent



Hop into Banners



For a cracking good deal

Sales • Lettings • Mortgages

01925 753636 www.bannerandco.com

Please note that if you have already instructed another agent, we would advise you to check any agreement you may have to ensure you are not liable for more than one commission by instructing us as your agent