

# Lymm Life

FREE EVERY MONTH

March 2011  
Issue: 144



Take a look!



## Master Greenkeeper

Page 13



LYMM  
PARISH  
COUNCIL

Approved by Lymm Parish  
Council as the official  
magazine for Lymm

### Banner & Co

Independent Residential Sales  
and Letting Agent

See our main advert  
on the back page  
for details

01925 753636

### SPECIAL OFFER

Free Initial Consultation  
and Tooth Whitening with



[www.gavinismydenfist.com](http://www.gavinismydenfist.com)

Countdown | Dental Solutions

T: 01925 75 65 65

### Slimming World



**TUESDAY**  
Lymm Youth &  
Community Centre  
9.30am and 7pm  
Tel: Christine  
07851 946117  
0844 897 8000

SAVE  
**£5**

\*Half price  
membership  
until 31st April 2011



### need family law advice?

call your local  
legal experts

free legal clinic  
mondays 5pm-7pm



01925 604713  
[www.farnhams.co.uk](http://www.farnhams.co.uk)

Regular news updates at [www.lymmmlife.co.uk](http://www.lymmmlife.co.uk)



# Editor's Comment



## Editor

Gary Skentelbery

## Production

Paul Walker

## Business Manager

Tony Record

## Advertising

Freephone  
0800 955 5247

## Editorial

01925 623630

## Email

info@lymmmlife.co.uk

## Websites

www.culchethlife.com  
www.frodshamlife.co.uk  
www.lymmmlife.co.uk  
www.warrington.tv  
www.warrington-  
worldwide.co.uk

## Address

New Media Centre  
Old Road Warrington  
WA4 1AT

*Lymm Life is published monthly  
by Orbit News Ltd.*

*The contents of this magazine  
are fully protected by copyright  
and nothing may be reprinted  
or reproduced without prior  
permission of the publishers.*

*The publishers are not liable for  
any statement made or opinion  
expressed by third parties in this  
publication.*

*Printed by TwentyFourSeven*

**IT doesn't seem that long ago that we were reporting the setting up of the Low Carbon Lymm group, so it was interesting to learn from a presentation the group gave to the parish council, that it now has some 150 members.**

This is remarkable growth for a group which, when it launched, described itself as "a few like minded people" and whose aims do not seem to be shared by most of the population.

In these days of changing weather patterns, whether or not they are due to long term climate change, and general economic pressures, it is worth reminding residents that many

of the proposals the group are putting forward may not only help save the planet but also, of more immediate concern, save money.

The idea of a Lymm hydro-electric scheme might, at first, seem fanciful. But LCL members clearly regard it as feasible and we believe they should be supported and encouraged.

Believe it or not, it is possible the group could provide electricity from water in Lymm more easily than they could achieve one of their other, apparently less ambitious proposals - making Lymm plastic bag free.

This has, apparently, been done elsewhere, so it should be possible to do it in Lymm. But it will require a complete change of approach not

only from shoppers but also from shop assistants, some of who seem determined to thrust plastic bags on customers whether they want them or not!

LCL are planning a plastic bag free day during May and we would urge traders to support them in this. It would represent a big step towards making Lymm a completely plastic bag free village.

The group is also hoping to organise projects in local schools to help educate children on sustainability issues - another excellent idea.

We hope to hear much from them in the future. What Lymm does today, others may do later.

**Have you got a story? Send your news items and pictures to  
info@lymmmlife.co.uk or phone 01925 623630**

## R + N STANHOPE

### Coal and Log Supplies

Best Quality Coal  
Smokeless Fuel  
Logs Supplied in Bags and Bulk  
Peat Bricks  
**Open 7 Days**

**Broomedge Farm  
Burford Lane, Lymm WA13 0SE**

**Tel/Fax: 752830**



## Acupuncture

### 20% OFF a course of 3 treatments

with Andreas Feyler  
BACC, RCHM, ATCM

www.cheshirenaturalhealth.co.uk  
Cheshire Natural Health, Beehive House, Tarporley Road, Stretton, Warrington

Please call to find out more  
Tel: 01925 730123

## HIGH LEGH PARK GOLF CLUB

Play Golf at one of Cheshire's secret gems





**2011 Fees:**  
7 Day: £745  
5 Day: £600  
7 Day Joint £1300  
5 Day Joint £1090  
**No Joining Fee**

**2011 Opens:**  
Mixed Open: July 10th  
Ladies Open: July 19th  
Seniors Open: August 4th  
Junior Open: August 12th  
**For further details visit the website**

**High Legh Park Golf Club Pro Shop**  
We offer a boutique style way of shopping for the latest styles in contemporary golf and leisurewear. Brands include Golfino, Chervo, Daily Sports, Rohnisch, Lija, Lyle & Scott, Galvin Green and Adidas. Also stockists of Fiorelli and Nica handbags, Tatti & Co jewellery and Belle & Harris Scarves.

**Present this advert for a 40% discount on ladies golf wear and accessories - Valid until 1st March 2011**

**Tel: 01565 830012 Email: sbarnes@highleghpark.com www.highleghpark.com**  
**High Legh Park Golf Club, Warrington Road, Knutsford, Cheshire WA16 0WA**



## Barn Owls on the increase

NUMBERS of Barn Owls have increased thanks to the placement of sturdy owl boxes, members of Heatley WI heard.

They heard that volunteers from the Barn Owl Conservation Group helped the numbers increase with the placement of the boxes. The speakers appealed for help, both physically and financially, and asked members to report any sightings of the bird and look out for new nesting places.

A vote of thanks was given by Zena Morgan. Competition prizes were given to Liz Wellbelove and Brenda Topping.

President Liz Wellbelove welcomed members and gave an outline of events for the year including a trip along the Sefton coast, a birthday meal and Liverpool tour.

Flowers were sent to recently bereaved Eileen Powhall, and flowers were also presented to secretary Ann Malcom who had recently spent a long time in hospital. Linda Fishwick, who had also been in hospital, was welcomed back. Ann's duties had been carried out by her daughter Lisa Bates.

Members were invited to attend a Public Affairs meeting and delegates were sought for the country meeting in Winsford in March.

After tea and biscuits raffle prizes were distributed.

# Community centre will close without support!

**OUGHTRINGTON Community centre could be forced to close down in June if new volunteers do not come forward to serve on the management board.**

That was the stark warning from Chairman Andrew Wilson who has written a plea to 500 local people in a bid to find new blood.

Previous appeals for help have fallen on deaf ears with not a single person in the local community putting themselves forward.

Andrew says the centre is a thriving facility run, for the benefit of the local

community and its children, entirely by volunteers.

He said: "In order to function it is essential to have enough volunteers to manage and run the centre and to take up positions on the management board."

"Over the past few years, there have been many improvements to the centre including new rooms, new flooring and a much improved

heating system. Grants have been secured which will allow work to replace the entire roof in the very near future.

### Danger

"The centre is financially in a good position with costs and income in balance. But without new volunteers there is a danger that the centre could close.

"Please do not leave this to 'others'. If you value the use of the centre, and want it to be available for use by your children, you need to consider this message carefully. Failure to gain the support needed will result in the centre closing in June 2011."

To find out more about the new Board Structure and to get involved, please contact Andrew Wilson on 01925 753098 or wilsonlymm1961@btinternet.com. Alternatively look at the website www.oughtrington.co.uk

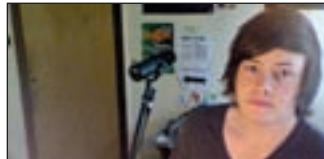
## Music award for Lymm student

A FORMER Lymm High School pupil has won a national songwriting award, sponsored by the Musicians Benevolent Fund.

Ben Whelan, now in his final year at Leeds Metropolitan University, studying music production, was one of six finalists invited to perform the two songs he submitted at a special event in London. He was awarded second prize by the panel of judges made up from key members of the UK music industry, including guitarist Ally McErlaine, a founding member of the band Texas, and film music composer David Arnold.

While at university, Ben has become a popular member of the Leeds music scene as a songwriter, producer and performer.

His two award winning songs, "Boxes" and "Time to Go", can be found on [www.soundcloud.com/ben-whelan](http://www.soundcloud.com/ben-whelan).



*Sophies Soft Furnishings*

Curtains • Roman Blinds  
Cushions • Tiebacks • Poles  
Tracks • Valances • Pelmets

We design, make and fit to meet your exact requirements.

For free home visit or advice ring **Anne on 01925 754446**  
[www.sophiessoftfurnishings.co.uk](http://www.sophiessoftfurnishings.co.uk)

**Whites Sports**  
**Warrington Market**  
1901 - 2001 - 100 YEARS OF EXCELLENCE

Specialists in:  
Darts, Bowls, Snooker, Air Guns,  
Walking Sticks, Warrington Town  
Merchandise, Rugby, Cricket, Football

**GIFT VOUCHERS AVAILABLE**

Telephone/Fax:  
**01925 631531**

**The UK's No.1 Lawn Care Company**

- Scarification
- Aeration
- Lawn Fertilising
- Weed Control
- Moss Control
- Water Conserver
- Pest and Disease Management

from as little as **£15**

**Call in the professionals!**

GreenThumb's annual treatments ensure your lawn looks lush, green and healthy. With prices starting from £15 per treatment, your lawn nightmare will soon be history.

Call your local branch today for a FREE lawn analysis and no obligation quote on:

**01925 210669**

Find us online at: [www.greenthumb.co.uk](http://www.greenthumb.co.uk)

**Rosebank Naturegarten, Pepper St, Lymm**  
a dream come true for you and your child.

- Home from home
- Extensive grounds
- Outside learning days
- Early Years/flexible sessions
- Full Day Care
- Children from 2½ years

Did you always want to build dens, explore, do woodwork and gardening?  
...make sure your child has a head start and a childhood to sing about with a setting that gives them real space to develop, learn and play.

Our new Scandinavian Log Cabin is the natural choice for your child with its custom design and outside areas. Most of all we really do cater for children's individual needs with all play being led or directed by qualified teachers. *"The diverse curriculum offers opportunities for children to develop their skills and find their strengths" (OFSTED)*

**Up to 15 hours per week may be FREE using Early Education Grants for 3 and 4 year olds.**

We can also take babies and toddlers at The Rosebank Centre, our other Pepper Street nursery, which focuses on their specific needs.

Phone Sadie Hopley on 758959 to come and explore



**MOOD**  
design solutions

One-2-One Social Media Training

Raise the profile of your business and generate new leads

Introductory course £90  
Covering Facebook | LinkedIn | Twitter

Tel: 01925 752500  
info@mood-design.co.uk

**MUSIC QUIZ** 🎵  
at Lymm High School

**Live Music with 2's Company** 🎵

Friday 18 March 7.30pm  
Hot Supper & Bar

Tickets £10 from School Shop  
or Rushgreen Garage

**or Call 01925 759871**

**Sophie's KITCHEN** 🌸

Breakfast, Lunch, Afternoon Tea,  
Coffee & Cake. Celebration Cakes  
made to order. Gifts & Crafts

Celebrate Pancake Day with us 8th March  
www.sophieskitchen.co.uk

**Tel: 07957 325710**  
Lymm Nurseries, Tanyars Farm,  
80 Rushgreen Road, Lymm WA13 5PR

**Cards by Samantha** 🦋

Daytime & evening card making  
classes - for all levels

Saturday workshops

**TRY CARD MAKING FOR FREE** -  
taster sessions coming in March

Wedding Stationery - made to order -  
10% discount following consultation

Tel: 01925 602848  
[www.cardsbysamantha.co.uk](http://www.cardsbysamantha.co.uk)

**P**

**P.E.T.S. ANIMAL SPA**

**Pet Grooming Specialists**  
20 years experience

Grooming from £10

Treatments from £5

we use products with natural ingredients  
Blueberry Facial for tear skins  
Avocado Paw Treatment for Cracked Pads

**07792 756 545 or 01925 750418**  
[www.petanimalhotel.co.uk](http://www.petanimalhotel.co.uk)

## What's On

**March 8**  
**LYMM PARISH COUNCIL**  
Lymm Parish Hall, 7.30pm

**March 14**  
**LYMM HISTORY SOCIETY**  
Village Hall, Pepper Street, 8pm  
"Octagonal Commemorative Plates" -  
Brian Clancy

**LYMM LIONS GROUP**  
Meet: Bridgewater Club, Lymm  
1st and 3rd Tuesdays of the month. 8pm  
Contact: 0845 833 5729

**LYMM THURSDAY EVENING BRIDGE CLUB**  
Lymm Village Hall every Thursday 7pm

**MAPLE LODGE ART GROUP**  
Meet each Wednesday 9.30am - 12.30pm  
Maple Lodge Guide HQ, Pepper St, Lymm  
Details: 01925 755126

**ROTARY CLUB OF LYMM**  
Meet every Wednesday at Statham Lodge Hotel  
7.15pm for 7.30pm  
Contact the secretary 01925 650189

**LOVING HANDS**  
Knitting for charity at Lymm Methodist Church,  
2nd and 4th Thursday each month.  
1.30pm - 3pm. Details: 01925 823614.

**MARKET LUNCHES**  
Eagle Brow Methodist Church  
3rd Thursday in the month  
Light lunches 12 noon till 2pm  
All proceeds to Age UK and YMCA Room at The Inn

**LYMM SCOTTISH COUNTRY DANCE CLUB**  
St Mary's Church Hall  
Second and fourth Fridays (Sept - May) 7.30pm  
Details: 753853

**LYMM BAPTIST CHURCH DROP-LUNCH**  
Higher Lane. Mondays (during term time).  
12 noon to 1.15pm. £2.50

**LYMM JUBILEE GARDENING CLUB**  
Meet Third Wednesday of the month  
Lymm Baptist Church, Higher Lane. 7.30pm  
Visitors welcome. £2 includes tea and cake

**LYMM FLORAL ART GROUP**  
Lymm Village Hall  
Third Monday of the month (except August) at  
7.30pm]

**Non-profit making  
community organisations**

in conjunction with

**Lymm Parish  
Council**



**TAEKWON-DO**

at Lymm Leisure Centre

**New Beginners Classes**  
Children & Adults

All grades welcome

Call  
**07525 340284**  
[www.taekwondo123.com](http://www.taekwondo123.com)  
taekwondo-news@hotmail.co.uk

**Lymm  
Parish Council  
Meeting**

Tuesday 8th March  
7.30pm

Lymm Parish Hall

**Lymm History  
Society**

Monday 14th March  
8pm

"Octagonal Commemorative  
Plates" - Brian Clancy

Village Hall, Pepper St

**To appear on the What's On page please contact Lymm Life on 01925 623530**

**Cotebrook House**

**Hot Cross Bun Coffee Morning**  
Wednesday 6th April - 10am-12pm

**The Cotebrook May Day  
Music Festival**  
Monday 2nd May - 2pm-6pm  
Bar, Barbeque & Stalls. Bring a  
picnic and enjoy our lovely grounds

**Open Day**  
Wednesday 11th May  
Food, Music & Quiz. All Welcome

Please contact us if you would like to visit our home  
**Opposite Lymm High School**  
Oughtrington Lane, Lymm WA13 0QY Tel: 01925 752583



Kids Planet - Beament  
O'Leary Street  
Warrington  
Cheshire  
WA2 7RQ  
01925 630 879  
Open 07:30 - 18:00

Kids Planet - Warrington  
Ebenezer Chapel  
Ebenezer Place  
Leigh Street, Warrington  
Cheshire WA1 1UL  
01925 417 350  
Open 07:00 - 19:00

**Kids Planet**

... A WORLD OF DIFFERENCE

We offer the world as seen through the eyes of a child.  
We give the highest standard of day care and education creating a unique  
home for home for our children.

Kids Planet - Lymm  
29 Eagle Brow  
Lymm  
Cheshire  
WA13 0NA  
01925 759 220  
Open 07:00 - 19:00

Kids Planet - Widnes  
Kingway Learning Centre  
Victoria Road  
Widnes  
Cheshire WA8 7QY  
0151 257 7079  
Open 07:30 - 18:00

- Flexible opening times
- Experienced and enthusiastic staff
- Ultra secure environment with CCTV
- Healthy nutritious menu
- Indoor and Outdoor play areas
- Excellent Ofsted Reports

[www.kidsplanetdaynurseries.co.uk](http://www.kidsplanetdaynurseries.co.uk)

The Complete Kitchen & Bathroom Service

**Village Designs**

We design and install all types of kitchens  
and bathrooms. Our comprehensive service  
includes all trades:

Lighting • Tiling • Flooring • Decorating etc

**One local company from start to finish**

Visit: [www.villagedesigns.co.uk](http://www.villagedesigns.co.uk) or  
Ring Jeremy on 07810 421243

**GLASS GLASS GLASS**

**LEIGH GLASS COMPANY LIMITED** EST 1974

All Types of Glass Cut To Size  
Commercial and Domestic  
Double Glazing and Glazing Services  
Manufacturers and Installers  
Glass and Glazing Federation Member  
Patio Doors / Hardwood / uPVC / Table Tops / Shop Front  
Kitemarked Units Supplied  
Trade and Retail

Mirrors | Shelves | Safety Glass | Sheet Polycarbonate  
Double Glazing Units Replaced | Shower Screens | Splashbacks

**Tel: 01942 678 440 Mob: 07968 224517**  
Email: [leighglass@hotmail.co.uk](mailto:leighglass@hotmail.co.uk) 317 Wigan Road, Leigh WN7 5EL



# Welcome to a proper bank



At Handelsbanken relationship banking still lives up to its name. With all key decisions made locally by us at the branch we are able to offer a highly personal banking service that is designed to meet your individual requirements.

We provide all the main services that high street banks provide, from day-to-day transactional banking, to the more sophisticated needs of the modern business. Our Individual Banking service is designed for high net worth customers who need a bespoke

offering with easy access to their manager. Putting the needs of the customer ahead of all else lies at the heart of everything we do. We tailor our current accounts, mortgages and loans to your individual requirements.

Chris Clarke  
Karen McComb

Corporate Account Manager - Tel: 01925 575706  
Individual Banking Manager - Tel: 01925 575708

1st Floor, 760 Mandarin Court  
Centre Park, Warrington, WA1 1GG  
[www.handelsbanken.co.uk/warrington](http://www.handelsbanken.co.uk/warrington)

## Handelsbanken



**P.E.T.S. ANIMAL HOTEL**  
Setting New Standards in Animal Care  
Luxury Style Boarding

**Doggy Day Creche**      **Puppy Training Classes**  
- Pick up & Delivery Service      - Behaviour Management

To arrange a tour please ring  
Fran Jennings on  
**07792 756 545 or 01925 750418**  
27 Burford Lane, Lymm, Cheshire WA13 0SH  
[www.petsanimalhotel.co.uk](http://www.petsanimalhotel.co.uk)

**£5 OFF**  
**Vaccinations**

Applies to full cat vaccination (flu, enteritis and leukaemia), dog booster and puppy and kitten full course vaccinations.

**Contact our Surgery TODAY**

Offer applies 15th January to 28th February on production of advertisement only



**LYMM VETERINARY SURGERY**  
[www.willowsvetgroup.co.uk](http://www.willowsvetgroup.co.uk)

10 Booths Hill Road  
Lymm WA13 0DL  
Telephone  
**01925 752721**



**Bramble Lodge Day Nursery**  
Birth – 5 years

Good quality childcare and education in a homely environment.

Next to Lymm High School  
[www.bramblelodge.co.uk](http://www.bramblelodge.co.uk)

**01925 757597**  
36 Oughtrington Lane • Lymm

**Abbey Leys Farm Shop**

*Fresh Farm Food at its Best!*

Organic Free Range Eggs • Goose and Duck Eggs • Pickled Eggs  
Home Grown Potatoes • Fresh Fruit and Vegetables  
Farmhouse Cheshire Cheese • Butter • Fresh Milk  
Farmhouse Ice Cream and Lemon Cheese

Opening Times: 9.00am - 5.30pm Mon - Sat. Sun 10.00am - 4.00pm

**ABBEY LEYS FARMERS' MARKET**  
First Sunday each month 10am - 2pm

**Tim & Janet Harrison**  
**753465**  
Peacock Lane, High Legh



Warburton Soulers Dave Lewis, Lawrence Armstrong and Peter Biggs with residents Celia Cross and Rosie Fairs from Cotebrook House.

## Soulers raise £1,000 for Cotebrook

THE Warburton Soulers have again come up trumps following their unique souling play performances by donating all the money they raised to Cotebrook Home.

A total of £1040 was presented to the residents in Cotebrook's Day Centre. To add to the occasion the soulers gave residents a taste of their performance.

**BYTEWYSE**  
COMPUTERS LTD  
THE SMARTEST CHOICE FOR SYSTEMS & SUPPORT

- Custom built PCs to meet all requirements
- Full Windows 7 supply and support
- Free home delivery and installation with up to 24 months warranty
- PC repairs and maintenance
- Remote Access Support
- Networking and PC support contracts for small or home businesses
- Call us now on 01925 759658

[www.bytewysecomputers.com](http://www.bytewysecomputers.com)

58, PADDOCK VIEW, LABKEY LANE, THELWALL, WARRINGTON, WA4 2TF



**Thelwall Upholstery**

**FOR THE MOST COMPETITIVE RATES IN THE AREA**  
49 Knutsford Road, Grappenhall WA4 2NR  
Call Sean on: 01925 604770 or mobile: 07799 228080

*For all your upholstery needs*

**SPECIALISTS IN:**

- Re-filling Cushions • Re-springing • Full Re-upholster
- Dining Furniture • Headboards

A wide range of sample books to choose from  
All at competitive rates

PHONE FOR YOUR FREE ESTIMATES





# Pupils sold on estate agency

**AS part of their Creative Curriculum, Year 6 pupils at Oughtrington Primary School have been exploring the world of estate agency.**

Helen Brislane, Manager of Bridgfords, showed great interest and enthusiasm when asked to provide copies of house details to assist the children with their studies and soon found herself in front of 52 children, passing on the tricks of her trade.

### Challenging

Her informative presentation culminated in a challenging quiz. Four correct entries were drawn at random and Helen returned to school to present the winners with their prizes. The £5 gift voucher for the sweet shop was particularly well received!

Following the visit, the children went on to produce their own estate

agent brochures, drawing floor plans of their own houses and adding descriptions based on the newly learnt estate agent terminology.

Letters of thanks from all of the children were sent to Helen which provided a perfect opportunity to write during a Literacy lesson.

Teacher Jayne Krawiecka said: "Our follow up plan is to take the children on a tour of the locality to see first hand the amount of new building that has taken place in Lymm over the past few years.

"Our theme for next half term is "The Plague" - I wonder what experiences that will bring for the children!"



L to R - Olivia, Rachel, Robert and Lewis with Helen Brislane.

## Bridge club

LYMM Afternoon Bridge Club is holding fortnightly meetings at Appleton Parish Hall, Dudlow Green Road, Appleton.

The next meeting is on February 23 and there are meetings on March 9, 23 and 30 and April 13 and 27.

**For ALL your plumbing requirements**

**ROBERT KETTLE**  
**PLUMBING & HEATING SERVICES**

For a fast, local service  
No job too small • Competitive rates  
Free estimates • Senior citizens discounts

**Home: 01925 756685**  
**Mobile: 07789514087**

**oven** oven valeting service [oven.co.uk](http://oven.co.uk)  
...punctuality, pride, courtesy...

- Range & Aga Specialists
- Ovens & Hobs
- Extractor Hoods
- Microwave Ovens
- Traditional Stoves

**LET US HELP - PHONE NOW**  
**01925 453377**

*the UK's favourite oven cleaning specialists*

# Dental care with Jill Cooper BDS DPDS

...something to smile about

*Providing quality, caring, affordable dentistry*

## Prevention is better than cure

We work with our patients to decrease the amount of dental decay they get. We do this by providing:

- Minimally invasive dentistry
- Fluoride treatment
- Diet advice
- Oral hygiene
- 2 Minute timers and brushing charts for children

**Adult examination only £16.50 – Free checkups for children when parents are patients**

**Special Offer!**  
Professional Teeth Whitening £175  
limited period only

Tel: 01925 758616  
152 Rushgreen Road, Lymm, Cheshire WA13 9QW  
dental-care@btconnect.com





*Tabley House*  *Nursing Home*

Providing Excellence In Care of the Elderly

Including:

Nursing & Residential Care, Palliative Care  
Post Operative Care, Convalescence Care, Day Care,  
Respite Care, Care of the Elderly with Dementia



For further information or to arrange a viewing contact:  
Matron Karen Lynskey or Deputy Matron Liane Topham

Tabley House, Tabley Lane, Knutsford, Cheshire, WA16 0HB  
Telephone: 01565 650 888  
www.tableycare.co.uk

# Blooming marvellous!

**A LYMM Brownie unit is set to survive - thanks to Lymm Life.**

Last month the 6th Lymm Brownies issued an urgent appeal for new leaders to come forward to help the unit bloom.

As a direct result of the appeal the unit now has two new leaders as they prepare for their next fund-raising initiative.

The Lymm Guides, Brownies and Rainbows and 3rd Lymm Scout Group are preparing to sell Bedding Plants to help with their fund-raising for a building to replace the old Scout hut on Pepper Street, which is a recycled World War II shed.

Scouting and Guiding are uniting their efforts and resources to fund one new, jointly owned building. The planning application is currently with the Council.

One third of the anticipated building costs have been raised and the Guides and Scouts intend to raise the remainder by grants and fundraising. They hope that with the support of the people of Lymm they will soon be able to start building!

Look out for the bedding plant forms with next month's edition of Lymm Life.



Conveniently located in the centre of Lymm Village

## SPORTS INJURY & ORTHOPAEDIC CLINIC

Physiotherapy treatments

from...  
**£30**

Call now to book an appointment...  
Telephone: 01925 752333

Our team of highly qualified chartered physiotherapists use state of the art treatments and techniques to assist in the fastest recovery.

**COMMON INJURIES TREATED:**

- Spinal Injuries + Whiplash
- Low Back & Neck Pain
- Sports Injury Assessment
- Post Op Rehabilitation
- Knee Injuries
- Shoulder Injuries
- Sprains & Strains
- Hamstring & Groin Injuries



### SKI SEASON HAS ARRIVED!

White Rooms can offer pre ski assessments and treatment for persistent injuries prior to your trip. White Rooms can also offer full assessment, medical imaging and treatment of injuries that you may pick up whilst away.



Knee Injury Treatment

from...  
**£30**

from...  
**£350**

Full Knee Injury Assessment + MRI Scan

**DIRECT ACCESS TO MEDICAL IMAGING:**

MRI Scan from **£299**  
Musculo-Skeletal Ultrasound Scan from **£160**  
Ultrasound Injection Therapy from **£260**

11 Henry Street, Lymm, Cheshire WA13 0LT

www.whiteroomsltd.co.uk



With an increase in sales, we currently have clients waiting to purchase. Ridgeway Residential is the right choice to sell your property quickly and efficiently.

**Urgently Required Properties For Sale. Please call for a Free Market Appraisal Today**

**FOR SALE**

**FOR SALE**



**REDUCED**

**17 Rushes Meadow, Lymm**

A large modern detached property. The property comprises of entrance hall, lounge with double doors, dining room, family room, snug, downstairs W/C, large breakfast kitchen, utility, conservatory, 5 beds, 3 baths, Gardens to the front and rear. Parking for 3 cars. Must be Viewed.

**£579,950**



**7 The Poplars, Lymm**

A period property with stylish contemporary living. Comprises a large living room, dining room, breakfast kitchen, cloak room/ WC, 4 good bedrooms (en-suite shower room to the master) and family bathroom with walk in shower. Available immediately with no chain. Viewing Recommended.

**£450,000**



**Mersey View Farm, Lymm**

A spacious, fully modernised farm house in a semi-rural location. Briefly comprises of lounge, dining room, playroom, conservatory and fully fitted kitchen, five bedrooms and family bathroom. The property benefits from both front & rear gardens, single garage and driveway. Viewing Recommended.

**£399,995**



**30 Quayside Mews, Lymm**

A well-presented mews property overlooking the Bridgewater canal. The property comprises of an entrance hall, utility, bedroom 4/study, shower room, good sized living/dining room, breakfast kitchen, 3 bedrooms, 2 bathrooms, garage, walking distance of Lymm village. Viewing Recommended.

**£299,995**



**2 Woodbine Road, Lymm**

Attractive end modern mews in popular location, entrance hall, large lounge, breakfast kitchen with door leading into garden, two double bedrooms, two bathrooms, gas central heating, enclosed garden, garage and parking. Viewing recommended.

**£194,950**



**10 Hawthorne Road, Lymm**

Large 3 bed semi, lounge, dining room, kitchen, w/c, converted conservatory, loft room Gardens and off road parking.

**£165,000**



**5 Fieldways, Lymm**

2 double bed apartment on the 2nd floor, lounge/diner, kitchen, bathroom, off road parking.

**£110,000**



**18 Newarth Drive, Lymm**

A top floor apartment within a short drive of Lymm village. Comprising of entrance hall, living room, kitchen with breakfast bar, double bedroom, bathroom with shower above bath. UPVC double glazed and GCH. Would make a great first time buyers property or an investment property.

**£63,000 50% Shared Ownership**

**TO LET**

**5 Waste Lane, Thelwall**

large period property in very good condition, off road parking, garden, Unfurnished Available 22/02/11 **£795pcm**

**10 The Anchorage, lymm**

modern 2 bed property, off road parking, garden unfurnished 03/03/11 **£595pcm**

**34 Newfield Road, Lymm**

2 bed mid terraced, off road parking Part Furnished Avialble 01/03/11 **£595pcm**

**3 Holly Grove Court, Booths Hill Road, Lymm**

2 bedroom apartment, unfurnished. **£575pcm**

**17 Waterbridge Court, Lymm**

bed apartment with communal gardens and of road parking, unfurnished Available immediatley **£595pcm**

**TO LET**

**Due to the high demand in Rentals we require To Let properties in all prices.**

19 The Cross Lymm Cheshire WA13 0HR T. 01925 756931 E. sales@ridgewayresidential.co.uk





## New initiative for Dingle steps

LYMM Parish Council is hoping to improve access to the village centre from Higher Lane by the Dam down to the Dingle.

Parish Councillor Ian Marks said, "Many visitors to the Upper Dam who have not been to Lymm before, won't realise there is a thriving village centre only a few hundred metres away. The entrance to the Dingle at the top of the steps is not very welcoming. We want to encourage visitors to walk down to the centre and use the shops, pubs and restaurants. This will benefit our local traders.

"We want to widen the entrance and perhaps put up a metal archway to draw attention to the pathway. Just down the first flight of steps we are looking at installing a simple map showing highlights of the village centre. We should take the opportunity to improve the steps and the handrail to improve safety for pedestrians. Thankfully Warrington Council has recently made some improvements to the steps but more could be done."

The Parish Council is currently obtaining quotations for the various aspects of the work and is in discussion with United Utilities about ownership of the surrounding land.

## BROTHERSTON

*I Fix Problems!*

Electrical - Plumbing - Audio Visual - Joinery  
Bathroom Problems - Kitchen Problems

Call Steven Brotherston on

**07818 636 112**

Email: [steve@ston.co.uk](mailto:steve@ston.co.uk)



## B.A.S

Bespoke Architectural Structures Ltd

Transform your living space or work place with specialist glazing made to the highest standard. Family based business manufacturing, supplying and installing glazing systems to the domestic and commercial market specialising in sliding folding doors: Call us now for a **FREE no obligation quotation.**

**Best quality and service assured!**



[www.b-a-s.co.uk](http://www.b-a-s.co.uk)

Tel: **01928 579957**

Unit 3, Sycamore Court, Manor Park, Runcorn. WA7 1RS

rated #1  
full service digital  
design agency in  
warrington\*

**CARPE DIEM**

WEB // DESIGN // VIDEO // + MORE

+44 (0)1925 299 842 [www.carpe-diem.co.uk](http://www.carpe-diem.co.uk)

**RAR+**  
**TOP 100**  
AGENCY 2010

# 'Big Conversations' promise lively debate

**A LIVELY evening of question and answer-style debate is promised at Lymm Youth and Community Centre on Friday, March 4.**

Churches Together Lymm and District are organising a "Big Conversations" evening involving a panel of representatives from key areas such as crime, politics, education, faith and the community.

Among those taking part in a 'Question Time' - style event. Police Inspector Gary McIntyre, MP David Mowat, Canon Michael Burgess and Su Williams.

In the run up to the event, a group of six students from Capernwray Bible College in Lancashire will be visiting Lymm for 10 days to undertake a community audit in the village centre and also through visiting local groups.

The audit will seek views on topics such as crime, education, changing moral values, impact of spending cuts, shopping, the role of the church and availability of leisure and transport facilities.

The results of the audit will be analysed and made available to the village and will also be the basis for some of the questions for the 'Big Conversations' evening.

Community audit questionnaires will also be available from Lymm Library, the Sanctuary café, the Lymm Youth and Community Centre, or by visiting [www.lymmbaptistchurch.com](http://www.lymmbaptistchurch.com)

The 'Big Conversations' evening will start at 7.30pm. Everybody from the Lymm community is welcome and refreshments will be available. For more information contact Susannah Pilkington, head of community engagement at Lymm Baptist Church on 01925 752805 or visit [www.lymmbaptistchurch.co.uk](http://www.lymmbaptistchurch.co.uk)

Anyone with questions they would like to be asked on the evening should email them to [susannah@lymmbaptistchurch.com](mailto:susannah@lymmbaptistchurch.com).

## Village life savers!

LYMM Rovers Junior Football Club has teamed up with North West Ambulance Service (NWAS) to help save lives in the village in emergency situations.

Two defibrillators - machines that can restart the heart - worth almost £3,000, are now available at Lymm High School and Lymm Leisure Centre. One was bought with funds raised by the Rovers and one donated by NWAS.

Eight football managers and 14 leisure centre staff have completed a four-hour training course that included operating the defibrillator and cardiopulmonary resuscitation (CPR) - meaning they now all have the ability to save a life. The machines can also be used by ambulance crews.

Lymm Rovers JFC manager Ian Watson, a community trainer for NWAS, said: "As a team committed to the local community, we are only too happy to support the NWAS and its defibrillation initiative, which could, ultimately, save lives.

"The team really pulled together to do this for the community, I'm extremely proud to be a part of this."

Rob Sharples, community resuscitation development officer at NWAS, said: "It's fantastic to see how committed the local football team is to the community.

"Giving free training to the leisure centre and football staff means they have the ability to provide life-saving help in the first few critical minutes after a cardiac arrest. Thanks to Ian, who really got this off the ground, lives will be saved."

Research shows that applying a controlled shock to someone in cardiac arrest within five minutes of collapse provides the best possible outcome for the patient. Survival chances fall by 10 per cent for every single minute before defibrillation is used on someone in cardiac arrest.







# FREE No Obligation Security Consultation For Your Home or Business



CALL 01925 419102

## Key Holding and Alarm Response FROM JUST 50P A DAY

Why take the risk? Let us give you complete peace of mind

Warrington based Akme Security makes economic sense in these very difficult times. Don't put your home or business at risk, neglecting your security through finances is false economy. It could cost you more if you don't protect yourself. Let AKME SECURITY UK Limited take the responsibility for the protection of your home and/or business.

By investing in AKME SECURITY UK, you are investing in the security of your property, business and hard earned valuables. We could save you thousands of pounds in loss of goods, we could save you the unhappy situation of invasion of privacy and we could also save you money on your insurance.



Owner  
Jeff Greenwood

**We also offer: Static Security Guards • Mobile Patrols  
Alarm Monitoring & Response • Alarm Installations & CCTV**

AKME SECURITY UK Limited have a unique concept of professionalism and customer care. If you already own an alarm system with auto-dialler, then these services are right for you:

### Secure Key Holding

- All keys held in a secure mobile safe in transparent tamper proof bags
- All bags have individual serial numbers
- Bag is only opened in case of emergency or by request of client
- Your address is not known by any individual
- In emergency or by client request, mobile officers will be informed of address & serial number to attend at once
- Client informed, logged and documented new secure bag & serial number issued

### Respond to your alarm activation (upto 12 per year)

- On immediate activation of alarm, control room will dispatch duty vehicle
- Response vehicle goes directly to address
- No matter what the incident, officers will deal with i.e. False alarm, burglary etc
- All relevant agencies (Police, locksmiths, glaziers, carpenters) will be called to secure your property - if applicable
- Clients will be informed as soon as possible via any means, all incidents logged & documented

## Protecting Your Community - 24/7 365 Days a Year



ISO 9001-2008 Quality Approved Contractor

24 Hour Call Out: 0845 123 5044 Email: [info@akmesecurity.co.uk](mailto:info@akmesecurity.co.uk)  
[www.akmesecuritas.com](http://www.akmesecuritas.com)



# Lymm writer's latest thriller

**LYMM crime writer Martin Edwards' latest Cumbrian spine-chiller has been published in paperback**

"The Serpent Pool" is his 14th crime thriller and the fourth in his Cumbrian series following the fortunes of DCI Hannah Scarlett and Oxford historian Daniel Kind.

He launched the paperback at the Wordsworth Trust Arts and Book Festival, where he spoke about the novel at an event at the Wordsworth Hotel in Grasmere.

Martin said: "The Lake District is a place of constant fascination and inspiration to me. I am just finishing

the fifth novel in the Cumbrian series called The Hanging Wood which will be published later this year."

The Serpent Pool will also be translated into German and a paperback version will be printed in the United States, where he has a growing fan base.

The book draws heavily on the life and opium-inspired writings of Manchester-born Victorian author Thomas De Quincey. The book finds Daniel Kind writing about De

Quincey who was editor of the Westmorland Gazette and a friend of William Wordsworth.

Critics say the book is the darkest of the four Lakes novels and possibly the "most rewarding."

Martin says the book sees Scarlett and Kind become more definite about their feelings for each other than in previous novels.

The paperback is published by Allison & Busby, priced £5.59 and is available from all good bookshops, Amazon and www.allisonandbusby.com



**Bee Chic**  
Frocks  
Casual Wear  
Shoes | Bags  
Jewellery  
Mens Formal Hire  
17 The Cross, Lymm, Cheshire  
Tel: 01925 756683

## Anneli aims to help you get your best health

**NUTRITION** consultant Anneli Conreen is combining the principles of ancient chinese medicine with high-tech bioenergetic technology in a bid to help people get their best health.

Using the state of the art Asyra Pro it indicates the energetic state of internal organs, food sensitivities, environmental sensitivities, nutritional needs, hormonal balance, toxin response and much more.

The comprehensive health analysis is totally non-intrusive and although it doesn't give any diagnosis it shows natural imbalances in the body.

Anneli, who is in her final year at Salford University studying a health degree, has been using homeopathic treatments for many years to treat her own allergies.

Her symptoms included chronic fatigue and when she discovered the benefits of the bioenergetic technology

she decided she wanted to help others.

Bioenergetic Medicine theory is based on the time-tested principles of ancient Chinese medicine and bioenergetic technology and is the coming together of advanced scientific and technological understanding, and ancient Chinese medicine practices.

A bioenergetic screening device is a form of this technology (also referred to as EAV or EDS) and has been around for over 50 years. It works by measuring the skin's electrical properties at specific acupoints that relate to certain organs, thereby helping practitioners clearly understand a client's health status.

Despite impressive testimonials from patients and practitioners alike, proof of bio-energetic screening's effectiveness remained largely anecdotal: since the 1950's, a

growing number of people have experienced its effectiveness, but there was no solid clinical foundation to support the technology. As such, bioenergetic screening

remained on the fringes of alternative healthcare; similar, in many ways, to the way in which homeopathy and naturopathy were positioned not that long ago.

In the 21st century, however, science has caught up with experience. Bioenergetic Medicine has already

gained widespread clinical acceptance, and results are backed by scientifically documented research. It's because of this that methods such as electro-dermal screening, the quantum body-field approach, and digital homeopathy are now being used in a growing number of health clinics across the world.

The most advanced development in the field of Bioenergetic Medicine is the Asyra Pro. Capable of probeless, non-intrusive full body scans within minutes, as well as

producing custom digitally imprinted remedies, it is the realisation of half a century's development.

The Asyra Pro has achieved outstanding success with a wide range of symptoms such as:

- Disruptive menopause
- Hormone imbalance
- Skin conditions
- Allergies and food intolerances
- Tiredness and ME
- Poor immune function
- Viruses and Cold & Flu's
- Digestive problems and IBS
- Parasites and Candida
- Stress
- Sleep problems
- Hyperactivity or Concentration problems
- Migraine and pain
- Weight-loss
- Low libido

For more information visit [www.getyourbesthealth.co.uk](http://www.getyourbesthealth.co.uk)

**Make 2011 your year to GET YOUR BEST HEALTH**  
with the New Year offer for Bioenergetic health screening

Treat Symptoms like:

- Disruptive menopause/ hormone imbalance
- Skin conditions
- Allergies/food intolerances
- Tiredness and ME
- Poor immune function
- Digestive problems and IBS
- Parasites and Candida
- Stress or sleep problems
- Migrains and pain
- ADD/ ADHD/ Autism
- Weightloss
- Low Libido and much more

Find out what vitamins you actually need and get individual eating plans  
**Anneli Conreen free at 0800 007 5201 or Mob: 07545 592 764**  
for more info visit: [www.getyourbesthealth.co.uk](http://www.getyourbesthealth.co.uk)

Below: Anneli with Mark Galloway one of the creators of the ASYRA PRO



What a difference a day makes™

**same day smiles™**

Advanced dentistry giving you implants and new teeth in one day  
[hello@samedaysmiles.co.uk](mailto:hello@samedaysmiles.co.uk)  
Tel: 01925 393 740





# Greenkeeper is one of the world's best

**LYMM Golf Club course manager Stuart Yarwood is now officially one of the top Greenkeepers in the world!**

Stuart has been awarded his Master Greenkeeper Certificate from the British and International Greenkeepers Association – one of only 55 in the world!

The award is only given to those who have achieved the highest standards in greenkeeping and golf course management. A minimum 10 years experience is required of which three must be as head greenkeeper and the certificate is only awarded following rigorous written examinations as well as course inspections.

Lymm Golf Club boasts an excellent and well presented course which is in harmony with the environment. Minimum chemical treatments are used and every effort is made to encourage native flora and fauna.

Late last year the club was awarded a grant from the Million Ponds project to construct two new ponds on the course. This was the first award of its kind for a golf club and will form part of a project which is to establish a nationwide network of new ponds which will help to arrest a century of decline. The new ponds

are now completed and members wait in anticipation for the natural establishment of habitats for wetland plants, amphibians and mammals such as water voles.

Lymm Golf Club was established over 100 years ago and boasts a membership of over 800 including many junior and social members. The club has recently revised its membership categories to comply with recent equality legislation and golfers of all standards are welcome to play or socialise at one of the major sporting and social venues in the area.

The clubhouse was rebuilt in 2007 and offers a welcoming and convivial atmosphere. It is an excellent venue for private parties of all kinds from birthdays to wedding receptions and is available for private hire.



## Twin Town grant

LYMM Parish Council has agreed to give a grant of £1,200 to Lymm Twin Town Society.

The money will be used to help fund a trip to twin town Meung-Sur-Loire in France later this year.




# LYMM Golf Club

## Full Membership

We have reduced our joining fee to £100. This means that you will save £500 to become a full member of one of Cheshire's leading golf clubs.

## Trial Membership

Want to look at us first? Then join our very successful trial membership scheme. This offers three months full membership for £100 plus a green fee of £10 each time you play. When you convert to full membership the £100 and all your green fees will be credited back to you helping to reduce your first years fees.

## INTERMEDIATE MEMBERSHIP

All 20-30 year olds know how tough it is financially these days and we have introduced a sliding scale of fees to help anyone in this age group.

## LADIES TASTER DAY

A ladies open afternoon will be held on 30th April at 2pm. All interested lady golfers and beginners are welcome.

Contact Andrew Scully  
**01925 755020**  
[membership@lymm-golf-club.co.uk](mailto:membership@lymm-golf-club.co.uk)  
 Whitbarrow Rd, Lymm,  
 Cheshire WA13 9AN  
[www.lymm-golf-club.co.uk](http://www.lymm-golf-club.co.uk)





# Stability at last for High Legh Park Golf Club

**AFTER being put into receivership in August 2010 by its previous owners, High Legh Park Golf Club has been acquired by successful Altrincham-born businessman Andrew Vaughan who has promised to stabilise club finances in the short term and unlock its true potential through investment in the long term.**

Andrew, who had moved away from the North West to pursue business interests, is now intent on moving back to the area to take a hands-on approach in developing the club's future. He took over in January and immediately wrote to members to outline his blueprint for the club which he sees as a long term project.

Situated not far from the M6 on the A50 Warrington Road, High Legh Park Golf Club opened in 1998 and boasts a state-of-the-art clubhouse with first class business and function facilities. Its challenging 18 hole course - set in historic parkland - was designed by Manchester-born former Ryder Cup Captain Mark James and offers a true test of golfing skills.

Mr Vaughan, who beat several other interested parties to purchase the club, said: "I am very excited at the prospect of overseeing the long term transformation of this fine golf club. Whilst the club has undoubtedly suffered from a period of neglect, I believe it has the potential and the facilities which, with the right management and investment, can develop quickly into one of Cheshire's premier golf venues."

"It is my intention to invest significantly in the club and its facilities. The course will see

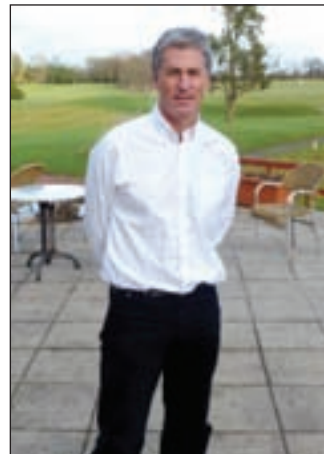
immediate short term investment and, with the help of appointed experts, we will develop and implement a long term Course Development Plan."

"What has also really impressed me in my short time here is the welcoming and relaxed atmosphere around the clubhouse. Our members are a huge asset to the club and their enlightened modern approach to playing the game is a great strength. I am determined to retain and develop this ethos and this will be a major plus point for the club in the years ahead."

Despite only recently taking up his position, Andrew has already established a franchise agreement for the pro shop and golfing services with leading Cheshire club professional and businessman Gavin Beddow.

"Gavin has proved, at other courses in Cheshire, that he can introduce a wide range of quality golfing products to the pro shop and increase profitability for the course as a whole. I'm confident Gavin will soon establish an operation that will enable our members to boast one of the best pro golf shops in the county."

Inside the clubhouse things are looking up too with a new bar agreement being reached with Carlsberg Breweries, adding greater



choice and value to the welcome 19th hole.

Andrew has already acknowledged the disruption to members over the last few months with an announcement to keep fees in 2011 at the same price as 2010.

New members are very welcome and will also be rewarded if they pay a full fee on joining before the 1st April 2011 as they will then pay nothing until April 2012. Visitors are also welcome.

Andrew adds: "I don't think there has ever been a better time to be a member of High Legh Park Golf Club. I am determined to put this club up where it belongs - amongst Cheshire's golfing elite."

## School tops A-Levels table


SCHOOL league tables released recently show that independent Alderley Edge School for Girls produced the best A Level results in Cheshire East - and claimed second place for GCSE results as well.

The Alderley girls achieved an average A level score of 966 while the GCSE girls also achieved excellent results, with 94 per cent receiving five or more A\*-C grades, including English and Maths - more than 40 per cent higher than the national average.

Headmistress Sue Goff said: "We are delighted with the results and it is a credit to all our girls who produce excellent results year on year. "Our approach is based on respect for hard work across a wide range of subjects, whilst developing the confidence and life skills of our girls to support them in the wider world. We are pleased that we are getting the balance right but will not rest on our laurels - we will continue to provide the best all round education to all our girls."

Exciting times are ahead for the school, which caters for girls aged 3-18, with facilities for both the youngest and oldest girls recently undergoing a facelift.

Following refurbishments to the nursery and the sixth form centre, the school has announced new scholarships, which recognise the on-going achievements of pupils in years three and four in the junior school, as well as at 13+ and those in the sixth form.

**Monday 14th February**   
Treat that Special Someone!  
Valentines Dinner in the Bridgewater Restaurant  
With Live Music - £22.50 per person

**Friday 1st April**  
Lionel Richie Tribute Dinner Dance  
£23.50 per person or £64 per person to include  
accommodation and full english breakfast

**Sunday 3rd April**  
Mothers Day Lunch in the Bridgewater Restaurant  
£19.95 per adult £10.95 Children Aged 3 - 12  
Children Under 3 Eat Free!  
With a gift for the mums!

**Wedding Open Days**  
Sunday 20th February and Sunday 6th March



Tel: 01925 752233  
Whitbarrow Road, Lymm WA13 9AQ  
www.macdonaldhotels.co.uk/lymm  
general.lymm@macdonald-hotels.co.uk



Registered Charity No. 1005726



**Nursery &  
Junior School  
Open Day**



**Saturday 19 March**  
10.00am - 12.00 noon

For more information, please contact  
Julie Bedigan on 01625 563028.  
Alderley Edge School for Girls, Wilmslow  
Road, Alderley Edge, Cheshire, SK9 7QE

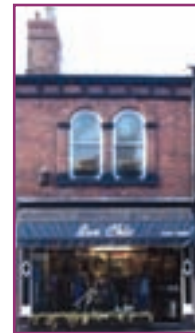
Scholarships now  
available in Year 3  
and 4 from  
September 2011

**Alderley girls have the Edge**





We have three commercial properties for sale in the heart of Lymm Village



Landlords who instruct us in February will have no management fee to pay for the first 3 months.

**LANDLORDS YOUR ESTATE AGENT  
NEEDS YOU!**

**OUR LETTINGS DEPARTMENT IS NOW OPEN**

We have residential properties for sale in Massey Brook Lane, Albany Road and Wellcroft Gardens coming on to the market to join our other properties one of which is:



Brooklyn Drive  
Large corner plot ideally situated to extend.

Look out for our  
Valentines Cupid  
Campaign!

24 The Cross, Lymm, WA130HU | 01925 759042 | [www.egertonsstates.com](http://www.egertonsstates.com)  
Email [sales@egertonsstates.com](mailto:sales@egertonsstates.com) or [info@egertonsstates.com](mailto:info@egertonsstates.com)



# Keeping family law local

**LEAVING behind the rat race and bright lights of the city, local businesswoman Lindsay Jones has decided to branch out and establish her own family law practice in the tranquil surroundings of her home village, Lymm.**

Lymm Family Law has opened its doors and promises to take a different approach to all aspects of family law; from divorce to living together agreements, grandparent contact to pre-nuptials. Instead of the cold office environment, Lindsay will take a more holistic approach while applying the same level of professionalism to all of her cases in her newly acquired barn conversion.

Lindsay said: "I want my clients to feel important and know there is a network of support available to them when facing what can be an extremely raw and daunting situation. I always aim to achieve the best results for my clients while providing them with the support, privacy and dignity that they need. I'm delighted to be able to offer this service on my

doorstep, saving people the long and costly commute into the city, and most importantly keeping business local.

"I'm extremely passionate about family law and it is important to me to achieve the outcome that is best for my client and their family. This passion has driven me forward and given me the confidence to step into business during a very tough climate. I am confident that the business will grow in the direction that I foresee and will achieve great things."

Lymm Family Law recognises that family law should not only be accessible, but affordable too. Their fixed fee divorce packages aim to reduce the expense and complexity of legal cases to fit the structure of modern families and issues, as well as budgets.

Lindsay is keen to give something back to society and for sometime has been a supporter of the Wai Yin Chinese women's society based in China Town in Manchester. This group has been set-up largely for disadvantaged women with the aim of equipping them with the necessary skills for integration into society. Lindsay is planning to continue offering her support to them where she can and will maintain close links with them.

She has also set-up a divorce support group called Over The Rainbow to provide people who are going through a divorce with some mutual emotional support.

Readers can find out more about Lymm Family Law, the Wai Yin society and the Over The Rainbow group by visiting [www.lymmfamilylaw.com](http://www.lymmfamilylaw.com) or by calling Lindsay on 01925 757144.



**Brolley have made my home look beautiful again...**

We always put our customers first. Let us take care of your household chores.

**Our services include:** Interior & Exterior Painting  
Paint & Wallpaper Stripping, Artex Removal, Staircases

**Call us now: 01925 321 317**

**Brolley**  
brolley.co.uk

## Lymm Festival Winter warmer!

THE Lymm Festival Winter Warmer programme continues with a second Comedy Night on Friday February 25 at the Spread Eagle pub on Eagle Brow.

Tickets are priced at £10 and are on sale now. Comedians Steve Day, Dominic Elliott-Spencer, Curtis Threadgold and compere Dan Smith are on the bill.

Thank you to everyone who braved the weather in December to come along and support the charity Ladies Shopping & Pamper evening at Lymm Golf Club. Despite a day of heavy snowfall the attendance was good and £500 was raised for the Motor Neurone Disease Association and £145 for the Lymm Festival.

Visit [www.lymmfestival.org.uk](http://www.lymmfestival.org.uk) for information on Lymm Festival 2011 and see how you can help make this year's Festival a success.

## Planning for a stable future

At Lymm Family Law we specialise in all areas of relationship breakdown.

- Pre-nuptial agreements
- Parental / grandparent access
- Divorce
- Living together agreements
- Financial
- Divorce support group

Come and have a **free** coffee and relaxed chat with our experts.

Survival guides are available to download from our website [www.lymmfamilylaw.com](http://www.lymmfamilylaw.com)

**01925 757144 / 07917711887**  
[lindsayjones@lymmfamilylaw.com](mailto:lindsayjones@lymmfamilylaw.com)

Accessible | Affordable | Approachable

# The Venue

Thirlmere Lodge, Rectory Lane, Lymm WA13 0AO

**Discounted drinks all night Monday**

**Our famous 'Open Mic' Night every Tuesday from 9pm**

**2 for 1 cocktails every Wednesday**

**Live acoustic music every Thursday**

**80's night every Sunday-come down and bop to your favourite tunes**

**Late Bar til 12pm Thursday, Friday and Saturday**

**Available for private functions every afternoon and all day Sunday**

**Happy Hour**  
Sun-Thurs 6-8  
Fri & Sat 5-7

Great selection of Wine and Draught Beers from around the world:

**Black Sheep Carling Boddingtons**  
**Magners Cider Amstel Peroni Guinness**

**Wi-Fi Hotspot**  
Come along and get online for FREE

Now serving Freshly Cooked Pizzas from Elmas Restaurant and Curralls award-winning pies

Visit our website:  
[www.thevenue.lymm.co.uk](http://www.thevenue.lymm.co.uk)

# Tel: 01925 756393



# Dining Out with *Lymm Life*

at The Barn Owl



OVER the years we have found ourselves returning to the Barn Owl time and time again, drawn by its idyllic location, the friendly staff and, of course, most of all by the quality of the food.

The days are now lengthening and soon customers will again be able to enjoy the panoramic views over the Bridgewater Canal as they dine, but even on dark winter nights, the Barn Owl is a warm, cosy place to be.

Host Carl Warburton has always adopted a policy of offering good, honest, value-for-money meals and, as a result, he has an army of regular customers who know a good thing when they see it.

On our most recent visit we pondered long and hard on the starter menu before choosing prawn

cocktail and the soup of the day rather than equally tempting dishes such as cheesy bacon wedges, port and stilton mushrooms and duck spring rolls.

For our main course we chose two old favourites, lemon and garlic chicken, pan fried in garlic butter and lemon with peppers, tomatoes, onion and white wine, and traditional fish and chips with mouth-watering cod and chunky chips.

The dessert menu included a variety of delights and we selected apple pie and custard - just like mother used to make! - and a truly decadent ice cream.

Overall it was a superb dining experience and one that will ensure we continue returning to this attractive corner of Lymm.

## THE BARN OWL

01925 752020

A Traditional Country Pub Situated on the Banks of The Bridgewater Canal, Apfen Wharf, Warrington Lane, Lymm, Cheshire. WA13 0SW

**Serving 7 Cask Ales & Traditional Home Cooked Food**





### Entertainment at The Barn Owl

26th March - Pete Valentine as **GEORGE MICHAEL**

30th April - **VICUS**

28th May - **FREDDIE MENSAH**

12th June - **JAPANESE VINTAGE MOTOR CYCLE SHOW**

25th June - **GARY SETTERFIELD as ELTON JOHN**

30th July - **ABBA TRIBUTE with ABBA FUSION**

To Book Tel: 01925 752020 or visit our website at [www.thebarnowlinn.co.uk](http://www.thebarnowlinn.co.uk)

# BOWDENS

Bistro & Wine Bar



**Bowdens Bites**  
Served Wednesday-Sunday 12 noon to 3pm  
No booking necessary

**A la Carte Menu**  
Served Tuesday-Saturday 5pm to 9.30pm

**Traditional Sunday lunch**  
Served 12 noon to 5pm

**Bowdens Bubbles**  
Friday 5pm to 7pm  
Champagne & Sparkling Wines 25% off per bottle

*We would like our Bistro to be your Bistro*

Tel: 01925 754852  
16 Bridgewater Street, Lymm WA13 0AB  
[www.bowdensbistro.com](http://www.bowdensbistro.com)



## EAT A STARTER AND A MAIN COURSE GET A PUDDING FREE

Our traditional village pub offers great British pub food and ales. Try a Bury black pudding stack with mushroom sauce followed with a home made pie. Just enough room for a free pudding. Bring this advert with you to receive this offer.

**Special Valentine's Menu from 12th-14th February**

Spread Eagle, 47 Eagle Brow, Lymm, Cheshire, WA13 0AG  
Tel 01925 757467 Email [spreadeagle@jwlees.co.uk](mailto:spreadeagle@jwlees.co.uk)

Terms & Conditions: Offer Valid till 12th March, does not apply on Sundays

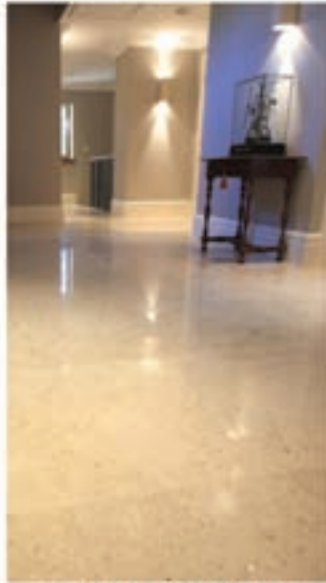
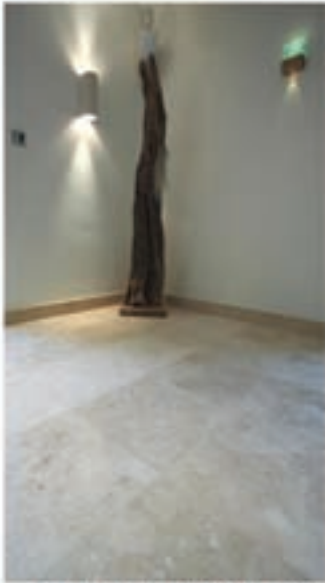


**BE YOURSELF**





**TILE SHOWROOM  
TRADE PRICES**



**NATURAL STONE TILES • WOOD FLOORING  
BATHROOM SUITES • UNDERFLOOR HEATING  
FURNISHINGS • FITTING SERVICE AVAILABLE  
PORCELAIN TILES • INDIAN STONE PAVING**

Lymm Nursery • Rushgreen Road • Lymm • Cheshire • WA13 9PR  
T: 01925 759 607 • E: info@realearthuk.com

# Campaign going from strength to strength

**PUPILS at Little Bollington and High Legh Primary Schools are joining their parents and members of the wider community in voicing their strong objections to Warrington Borough Council's proposal to break their close ties with the Lymm community by removing their Partner Primary status with Lymm High.**

Many children in the schools are Warrington Borough Council residents and for many it is their closest High School as they live less than two miles from the school itself.

Objections to this proposal can be made by writing to Kath O'Dwyer, Executive Director, Children and Young Peoples Services WBC and by contacting local councillors, Shiela Woodyatt, Ian Marks and MP David Mowatt.

All objections have to be in by February 28.

Tatton MP George Osborne, Chancellor of the Exchequer, has already signed a petition opposing the move.



## Chance to be immortalised in brick!

THE first tranche of bricks in the Oughtrington 'Brick by Brick' event are about to be placed on the new school extension.

For only £20 local residents can buy their own personalised brick which will be placed on the new school extension around it's first anniversary on May 18 this year.

Whether a pupil, ex-pupil, parent, grandparent, or part of the wider community, then this is a chance to be 'immortalised'.

Please contact Robert Higgins on 07740 921619 or email at robhig@virginmedia.com to take advantage of this special opportunity.

**CHERRY & GRIFFITHS**

SUPPORTING YOU ALL THE WAY

**Cherry and Griffiths**  
**08448 223 623**  
CLAIM CONSULTANTS & INSURANCE LOSS ASSESSORS

**Household buildings & contents**

**Commercial buildings, machinery & stock**

**Business interruption**

**High net worth**

**Antiques and fine art**

FLOOD | FIRE | THEFT | STORM DAMAGE

**PEACE OF MIND FOR THE POLICY HOLDER**

# Are you having problems with your burst pipe claim?

Freezing temperatures nationwide leading to thousands of burst pipes with subsequent water damage have occurred a number of times during my 42 years claims handling career.

However the chaos currently experienced by the insurance claims world is, I believe, unprecedented.

When this last occurred, loss adjusting firms were paid reasonable fees by insurance companies and had adequate staff resources to cope. In the early 1990's, insurers cut fees drastically and adjusting companies had by necessity to cut their cloth accordingly and ended up with fewer, less experienced staff.

The insurance claims industry is thus at the best of times, in normal circumstances, creaking at the seams because of cutbacks at insurers and adjusters - there are simply not enough people to go round coupled with reduction in skill and experience levels.

When, for example last year, Cumbria flooded, it creaked even more at the seams - but adjusting firms had the resources to minimise the problem at least a little, by bringing in adjusters from other regions of the British Isles.

However, this time the problem is nationwide and extra adjusters could not be imported from other

regions hence the most extreme chaos that has ever hit the insurance claims industry.

Policyholders have been waiting for up to a month for adjusters to visit their homes and business premises. There has been total confusion with some insurers telling policyholders not to touch anything until the adjuster gets there. What? - in a month's time?

On the other hand, we at Cherry and Griffiths knew what mitigation measures needed to be taken. We knew what a policyholder should and could do to mitigate a claim and thus save the insurers money - in other words do their job for them. We knew what evidence needed to be gathered so as not to prejudice a

policyholder's position with their insurers. We knew how to help policyholders deal with matters whilst awaiting the insurer's loss adjuster. We took the lead and did nothing which could ever be

criticised by the insurer because we were looking after their interests as well as those of our clients. We are ready to start reinstating damage at many clients' premises already.

Over the next few weeks and months frustration levels of policyholders who are not receiving the service and attention they deserve and are indeed entitled to expect will rocket. We can help you, your friends and business contacts to get through their problems.

Please do not hesitate to contact us for free advice, free review of your case - we can get involved at any stage during the course of the claim and look after the policyholder's interests - it's never too late to ask for our help. Tel: 08448 223 623.





# Motoring

## Is 20 plenty for you?

**MOST drivers believe their cars use more fuel and create more pollution at lower speeds - a view perpetuated by car manufacturers who claim that the optimum speed for fuel efficiency is between 50mph and 60mph.**

But a number of recent surveys indicate that the reverse is the case and that for some models the highest mileage is achieved at speeds as low as 20mph.

This has been seized upon by the

"20s Plenty for Us" campaign, founded by Lymm resident Rod King but now a national organisation, as further justification for their initiative to make the roads safer for all users - particularly cyclists and pedestrians.

So what is the truth of the situation? One study, involving five different vehicles ranging from a 1 litre Toyota to a 2.2 litre Landrover Freelander, show that the most efficient speed for all five was below 40mph and, in the case of two, was 20mph.

Another study found that fuel consumption increases sharply above 40mph and by 90mph has halved. When 30 km/h (18.6 mph) zones were introduced in Germany, it was found drivers changed gear 12 per cent less often, braked 14 per cent less often and required 12 per cent less fuel. At the same time, cycling increased by 23 per cent.

Department for Transport guidance is that, generally, driving more slowly at a steady pace saves fuel and carbon dioxide emissions, unless an unnecessarily low gear is used.

### Evidence

So there is plenty of evidence to support the argument that lower speeds result in lower fuel bills, as well as reduced pollution and improved road safety.

Despite this, the issue is plagued by controversy, with many motorists refusing to accept arguments based on either cost, the environment or road safety.

Locally, the borough council is to introduce 20mph limits in many residential areas after experiments which are claimed to have reduced the accident rate, so drivers are going to have to show some restraint whether they like it or not.

## MPVs are getting sportier

THE popularity of the MPV remains unabated and manufacturers are moving towards sportier looking models to counter claims that multi-purpose vehicles are necessarily rather dull.

A range of new or re-vamped models are offered for 2011 including the first ever diesel hybrid, the Peugeot 3008 HYbrid4.

This is really a crossover car, combining SUV feature such as four wheel drive with the practicality of a people carrier.

It's stylish, with plenty of load space, flexible seating and CO2 emissions as low as 99g/km, making it exempt from both road tax and the London congestion charge.

By contrast the re-styled Chrysler Grand Voyager is bigger than most other MPVs with almost mini-bus proportions, seating for seven and a reputation for reliability.

The Mazda5 was introduced last year, but the New Year has brought a 1.6-litre diesel model in addition to the petrol options. It is a better drive than most, boasts practical sliding doors and has a dramatic style that will impress the kids and also improve the aerodynamics to help reduce CO2 emissions to just 138g/km - and a yearly road tax charge of £110.

Vauxhall's seven-seat Zafira remains a popular choice due to its flexible and versatile seating system and is being given a facelift this year.

New engines seem likely to be introduced, possibly including a low-CO2 ecoFLEX version.

Chevrolet are entering the MPV market with the Orlando, a seven-seater with a high roof and a massive 1,487 litres of boot space with the rear seats folded.

It's a large, distinctive looking



vehicle with a 2.0-litre engine and will be available in diesel and petrol versions.

The Toyota Verso S is a stylish, supermini-size MPV with a high roofline to make more space for rear seat passengers. It will come with 1.0 and 1.33-litre engines producing low running costs and little environmental impact which is probably why there is no hybrid version on the horizon.

Honda, however, has added hybrid technology to its supermini-MPV, aiming it at younger buyers with distinctive colours and fresh design. Low running costs will give it more practicality and space than most similar sized cars.

UNIPART CAR CARE CENTRE

**FREE Local Pick-up & Drop Off Service**

AUTOSAFE Quality Assured



# Agden Park Motors



Park Garage A56, Agden Brow, Lymm

**5 Star** workshop facilities for servicing and repair

**Over 300** tyres at competitive prices!

**MOT Testing** petrol & diesel



BODYSHOP 01925 752235



AIR CONDITIONING REGAS/SERVICE

BIG ENOUGH TO COPE . . . SMALL ENOUGH TO CARE!

Contact **ALLAN** or **GEOFF** on **01925 752447**



# Shop Local

Welcome to our special feature which is aimed at encouraging our readers to support local businesses. Any local business wishing to feature in future editions please contact us on 0800 955 5247. Please mention this publication when responding to an advertiser.

## Lymm Osteopathic Practice

Established 1979

**SUZETTE PULMAN, N.D. M.R.N. D.O.**

Registered Naturopath & Osteopath

**DARREN HAYWARD, B.Sc. (Ost)**

Registered Osteopath

We are both registered with The General Osteopathic Council (G.O.Sc.)

Open Monday to Saturday

**Tel: 01925 752264**

The Rise, 16 Grammar School Road, Lymm WA13 0BQ  
(Easy Access Road Parking)

Registered with all major insurance companies

## Mobile Spa Spring Offers!

Mother's Day Pamper Packages  
Mother & Daughter Make-Over Package  
Gift Voucher's Available

Full range of beauty and holistic treatments  
All in the comfort of your own home  
Appointments 7 days a week, day or night

Call, email or see website today for further details

**Tel: 07985 599 533**

[www.tigerlilytreatments.co.uk](http://www.tigerlilytreatments.co.uk)

[info@tigerlilytreatments.co.uk](mailto:info@tigerlilytreatments.co.uk)



To promote your business in our shop local feature from just £50 per month contact James Bryan 01925 631592

## Cutting Edge

Family, Friendly, Unisex Hair Salon

Sharon and her team provide quality hairdressing for both men and women in a friendly salon with easy free parking. Sharon provides gentlemen's and boys cuts through to ladies and girls hairdressing including a full range of colour treatments.

**Now selling Bed Head products**

- Full head foils inc. Cut & Finish from £59
- Bridal Hair & Party Hair from £25
- Cut & Finish from £23
- Gentleman's hair cut from £5
- Children's hair cut from £7

Ring to make an appointment 01925 752735  
Ample free parking 77 Whitesands Road Lymm WA13 9JL

## Lymm Electric & Hardware

EST 1874

**Electrical Goods  
Repairs • Rewires  
Alarms • Security Lights**

NICEIC approved electrical contractors

**Dyson/Vac repairs & Service**

*All work guaranteed*

**01925 755252**

12 Bridgewater Street, Lymm, Cheshire

## Want to save money?

94% OF CUSTOMERS SAY THEY'D RECOMMEND US TO A FRIEND

### Join the club!

(over 350,000 people already have)

I ♥ the Club

- ✓ Guaranteed savings!
- ✓ Save 25% on your household bills
- ✓ Award-winning customer service
- ✓ Which? Best Buy - Phone and Broadband Bundles Feb 2010
- ✓ UK's cheapest line rental
- ✓ Free Global Calls
- ✓ Triple Value guarantee on gas and electricity
- ✓ Cheapest online shopping
- ✓ 1000's of High Street retail partners
- ✓ Earn CashBack on shopping and petrol

**For full details contact:**  
**0800 955 5247**  
New Media Centre, Old Road, Warrington WA4 1AT

\* Charges, rates and conditions apply. See www.club.co.uk for full details.



# Last meeting



MEMBERS and helpers are pictured at the last meeting of the Wednesday Afternoon Club at Lymm United Reformed Church. The club has closed after nearly 40 years because of a shortage of members.

## Murder mystery at the parish hall

DRAMA group The Bridgewater Players is to stage a thriller, "Dead Man's Hand", at Thelwall Parish Hall on April 14, 15 and 16.

The story involves two couples who are lured to a remote location to be murdered one by one.

Who is the murderer? What links the victims? The tense drama by Seymour Matthews contains a number of twists and turns and will keep the audience on the edge of their seats.

The Bridgewater Players, which originates from Lymm and still rehearses in Lymm, is celebrating its 60th anniversary this year and is planning a number of special events.

Originally it had intended to stage "The Killing of Sister George" in April but had to abandon this for the time being because of casting difficulties.

The group has also decided to stage a murder mystery evening at Thelwall Parish Hall on April 9 to help raise funds for new lighting and sound equipment.

## Obituaries

### Richard Parry

THE funeral has taken place of Richard Eric Parry, aged 96, of Rectory Lane, Lymm who died in Warrington Hospital on December 22.

Mr Parry was employed at Thames Board Mills, Warrington for 38 years but was also secretary at Lymm United Reformed Church and treasurer at Lymm Royal British Legion.

For a while he was water bailiff at

Lymm Lake.

He is survived by his wife, Johanne, daughter and son-in-law and two grandchildren.

The funeral service took place at Lymm United Reformed Church.

Funeral arrangements were by John Burrows and Sons, of Lymm.



### Kenneth Pownall

THE funeral took place at St Peter's Church Oughtrington of Kenneth Pownall, of Sycamore Drive, Lymm, who died, aged 87, on December 12. Father Michael Burgess officiated.

A guard of honour was formed by members of the Manchester branch of the R.E.M.E. Association and Lymm Royal British Legion. Mr D Bradburn played "The Last Post" at the

graveyard.

Ken had lived in Lymm all his life and had been actively involved in all aspects of village life.

He is survived by his wife, Eileen, daughter Karen and grandchildren, James and Sarah.

Funeral arrangements were by John Burrows and Sons, Lymm.

### Albert Wilkinson

THE funeral has taken place at St Peter's Church, Oughtrington, of Albert Wilkinson, who died in Thelwall Grange Nursing Home, Thelwall on December 27. Father Michael Burgess officiated.

Mr Wilkinson was the widower of Enid and had lived in Lymm for 57 years.

He leaves a daughter, son-in-law, two grandchildren and two great granddaughters.

Established 1878

**John Burrows & Sons**

Independent Family

**Funeral Directors**

M. G. Tandy

J. A. Tandy

16 Higher Lane, Lymm

Tel: 01925 752501

# Meet your MP

## David Mowat

David Mowat, MP for Warrington South, holds regular surgeries throughout the constituency. If you would like to arrange an appointment to discuss an issue of concern to you please e-mail him at [david.mowat.mp@parliament.uk](mailto:david.mowat.mp@parliament.uk) or telephone **01925 267580**.



**David Mowat**  
Member of Parliament for Warrington South

[www.davidmowat.org](http://www.davidmowat.org)

Produced by David Mowat MP, House of Commons, London SW1A 0AA

twentyfourseven  
design and print ltd



## Special Offers

- 500 Full Colour Digital Business Cards **£35.00**  
(Buy 1 set, Get 1 set free!)
- 100 A3 Full Colour Posters **£38.00**
- 500 A6 Full Colour Double Sided Flyers **£50.00**
- 10,000 A5 Full Colour Flyers **£248.00**  
(Pay for 1 side, Get the other printed for free!)
- 60" x 40" Full Colour Posters **£12.00**

Subject to VAT where applicable

**t. 01925 240 247 e. info@247print.net**

a. The New Media Centre, Old Road, Warrington, WA4 1AT



**CLASSIFIED**

**Call 0800 955 5247 to advertise**

**ACCOUNTANCY & BOOKKEEPING**

**APPLGATE & CO** licensed and regulated by the AAT to engage in public practice in Accountancy, Book-keeping, Payroll, VAT, Self Assessment. Tel: 01928 739996/07803 218343. 2 & 8 Collinson Court, Frodsham WA6 7PN. (08/11)

**AIR CONDITIONING**

**CLIMATE CONTROL BY WARRINGTON** based 4 Seasons, for offices, shops, surgeries, schools, homes and conservatories like yours! Installed in a day guaranteed 5 years. Keeping you cool when it's hot and warm when it's not. www.4sac.co.uk 01925 756620 (07/11)

**BATHROOMS**

**The Bathroom Refurbishment Co.**  
We can create the Bathroom of your dreams  
One Warrington based Company  
One Job from start to finish  
Unique 3D virtual CAD design system  
Please visit our website  
www.bathroomrefurbishment.co.uk  
Please Ring Wayne  
01925 826 828 or  
07976 574 828 (07/11)

**LYMM KITCHEN & BATHROOM PROFESSIONAL INSTALLATION.** Ceramic wall & floor tiling. For free estimates and advice contact Rob Evans on 01925 752623 business or 07763 770408 mobile. Est 2002. Local references provided (12/11)

**BUILDING SERVICES**

**BIG DIG Groundworks**  
Flagging, Back Filling, Garden walls, Fencing, Patios, Drives, Foundations. For free estimates call Mob: 07934 563 266 or Tel: 0153 424 5462 www.bigdiggroundworks.co.uk (08/11)

**BRICKLAYER AVAILABLE** for garden walls, pointing etc. Tel: 01925 755441 Mobile: 07966 491624 (05/11)

**CARPETS, CURTAINS & INTERIORS**

**BRIDGEWATER FLOORING AND BLINDS** we supply and fit carpets, vinyls, laminates, karndean, commercial flooring and tiles. Blinds-venetian, vertical, roller and roman. Outdoor awnings, curtains, upholstery, tracks, fabrics, poles and finishing touches showroom open at agden brow. Free measure quotation service. Tel: 01925 755805. Closed Wednesdays. (12/11)

**CUSTOM-MADE** curtains and loose covers. All accessories supplied and fitted. Made-to-measure blinds. Our fabric or yours. Tel: Orchard Soft Furnishings 01925 756388. (12/12)

**To advertise**  
Call FREE  
0800 955 5247

**CARPETS, CURTAINS & INTERIORS**

**Paul Bains Flooring Solutions Ltd**  
Carpets, Wood, Vinyl, Laminates  
*Domestic & Commercial Supplied & Fitted*  
Family business covering all aspects of flooring including domestic & contract locations  
Uplifting of old flooring can be arranged  
Moving of furniture by arrangement  
Limited disruption from start to finish  
Check website for previous installations  
www.paulbainsflooringsolutionsltd.co.uk  
**Office: 01925 758835**  
Mobile: 07973 376224 (07/11)

**CARPET CLEANING**

**A1 STAINBUSTERS:** Fully guaranteed carpet and upholstery deep dry cleaning. Clean & dry in only ONE hour. Quotes for both commercial and domestic. Contact the Local expert John Latham on 01925 205210 or 07765 314080 (04/11)

**SAFECLEAN: SAFE ORGANIC CLEANING.** Specialists in cleaning all leather and fabric upholstery, rugs, carpets and curtains in situ. Ask about our new organic allergy relief system, Guardsman stain protection plans and carpet repairs. Richard Vaal on 0808 144 8178 (04/11)

**SIMPLY THE BEST CARPET CLEAN YOU WILL EVER** have. Cleaners UK Ltd. Est 23 yrs. Have your carpets & sofas beautifully deep cleaned leaving them fresh smelling & colour restored. Latest & best methods. Dry/steam. Professional, reliable & affordable. For more info call Neil Riley on 01925 264989/07831 336060 www.cleaners-uk.net (12/11)

**CENTRAL HEATING**

**GAS SAFE REGISTERED ENGINEER.** Andy Gas of Lymm, specialist in: Boiler upgrades, servicing, repairs to all domestic heating and gas appliances. Professional service. Tel Andy on: 07753 838129 or 01925 753712. (03/11)

**CHILDREN'S ACTIVITIES**

**TUMBLE TOTS** is the leading national physical play programme for children, classes available in Knutsford Hale & Bowden. We can be booked for private parties. Contact Jane on 07812-144450. www.tumble tots.com/sale (15/11)

**CLEANING SERVICES**

**arleys angels**  
• Spring Clean Specialists  
• Presenting your home for sale  
• Moving house  
• After building work cleans  
01925 266834  
because you're worth it! (07/11)

**CLEANING SERVICES**

**SIMPLY THE BEST CARPET CLEAN YOU WILL EVER** have. Cleaners UK Ltd. Est 23 yrs. Have your carpets & sofas beautifully deep cleaned leaving them fresh smelling & colour restored. Latest & best methods. Dry/steam. Professional, reliable & affordable. For more info call Neil Riley on 01925 264989/07831 336060 www.cleaners-uk.net (12/11)

**COMPUTERS**

*Having Trouble With Your Computer?*  
Running too slow?  
Want to upgrade... go wireless?  
Call for experienced engineer  
Tel: 07974 448 165 or 01925 751 546 (03/12)

**DELIVERY SERVICES**

**FURNITURE FERRY LIGHT REMOVALS.** Collections arranged from Ikea, Costco and other stores, garden centres, auctions etc. You choose, you buy, I deliver - SIMPLE. Reliable, inexpensive service. Tel: Matt 07970 178 333 or 01942 732768. www.furnitureferry.co.uk (05/11)

**TnM Couriers** - specialists in urgent UK same day deliveries, international and UK next day services available, contract work undertaken, parcels to pallets, no job too small or too big, competitive rates. Call 01925 639029. (07/11)

**ELECTRICAL CONTRACTORS**

**A1 ELECTRICAL SERVICES PAUL LEWIS.** For extra sockets/lights, main board upgrades to full rewires, no job too large or small. No call out fee. All work guaranteed. Tel 01925 758337 or 07966 386806. Est 23 years. (06/11)

**EVERGREEN ELECTRICAL CONTRACTING.** NICEIC approved contractor. For lights and sockets to rewires, fuse-box upgrades. Qualified electrician. All work is to the latest IEE wiring regulations. No job too small. Most major credit and debit cards accepted. Tel: David on 01925 724219 / 07971 407022. (06/11)

**TRUST PROPERTY ELECTRICAL SERVICES.** NICEIC Part P Approved Contractor. All Electrical work undertaken. Inspection & Testing & PAT Testing. All work certified & guaranteed. Call Tim on 07754409906 or 01925 601055 (03/11)

**EQUESTRIAN**

**LYMM RIDING SCHOOL.** Learn to ride with friendly atmosphere, group lessons or private. Horses/ponies well schooled. Lessons from £10, we offer tests with pony club cert, please ring for more details. Training for pony club. Rebecca Bennett Reg AI. 01925 750435. Mob 07778 866006. (12/12)

**WANTED, EXPERIENCED LADY RIDER** to help exercise and school horse during the day. Also occasional horse sitting duties. Call 01925 752520. (08/11)

**EQUESTRIAN SUPPLIES & ANIMAL FEEDS**

**STABLES SADDLERY.** EST. 1964. Good stock of all equestrian supplies and animal feeds. Lots of interesting and unusual equine and canine collectables. Tel: Barbara Williams on Lymm 752762. (08/11)

**FIRES & FIRE SURROUNDS**

**Quality Fireplaces at Affordable Prices**  
**WARRINGTON FIRE SURROUNDS**  
Fires, Fireplaces, Marble Best Prices  
Quality Value Service Guaranteed  
**01925 417731**  
www.warrington-fires.co.uk  
8 Lovely Lane, Warrington (follow signs for hospital) (07/11)

**GARDENING SERVICES**

**A F GARDEN SERVICES**  
REGULAR MAINTENANCE  
TURFING, SOFT LANDSCAPING  
CLEARANCES, POWER WASHING  
HEDGE PRUNING  
**07796 818 686**  
**0161 928 1722**  
www.afgardenservices.co.uk (07/11)

**Beechwood Industries Ltd**  
Does your garden need a complete makeover or just good management?  
Free Assessment  
Free Consultation  
Landscape Design  
Construction  
Plant Care  
Maintenance  
Contact Adam Halford on  
07749 253 308  
www.beechwoodind.co.uk (07/11)

**FOUR SEASONS GARDEN SHOP EXCELLENT** selection of perennials, shrubs, bedding, hanging baskets and much more! Excellent quality and even better prices! Free parking! Near Northwich CW8 2EB. Call 07792313460 (07/11)

**J C SLAVIN**  
Landscapes & Garden Maintenance  
Pruning • Garden Clearance • Fencing  
Flagging • Driveways • Landscaping Designs  
**01925 756 839**  
Mob: 07599 747 373 (08/12)

**JDS**  
LANDSCAPE & GENERAL BUILDING SERVICES  
Garden Design • Driveways  
Patios • Garden Walls • Fencing  
Decking • Resin Bond Driveways  
See website for examples  
Tel: 01925 754883 Mob: 07515 967735  
www.jdscreate.com (04/12)

**LAWN DRAINAGE AND SOIL AERATION.** No trenches, no drainpipes, no digging, no repairs, no hassle. If this interests you Contact Bob Harper 01925 266852 or 07952 608701. (13/11)

**M J NEEDHAM LANDSCAPES.** Award winning with over 15 years experience. All aspects of landscaping, specialist in bespoke construction. Qualified design service available. Contact 01925 825 645 or 07888 730 383 (09/11)

**SIMPLY GARDENS CONSULTANCY** offers maintenance and design advice, maintenance schedules, planting plans; expert plant selection; on-site training. Regular or occasional maintenance can be arranged. Call Graham on 01925 766873 or email gard.cott@btinternet.com (13/11)

**GATES**

**Village Gates**  
SPECIAL AUTUMN OFFERS NOW ON  
Manufacturers and installers of quality timber gates  
villagegates.co.uk  
01925 766629 or  
Cherwell Road, Culworth WA5 5SH (07/11)

**SIMPLY THE BEST CARPET CLEAN YOU WILL EVER** have. Cleaners UK Ltd. Est 23 yrs. Have your carpets & sofas beautifully deep cleaned leaving them fresh smelling & colour restored. Latest & best methods. Dry/steam. Professional, reliable & affordable. For more info call Neil Riley on 01925 264989/07831 336060 www.cleaners-uk.net (12/11)

**Would you like peace of mind on your gas and electricity prices? Join the Club!**  
Our unique "Triple Value" guarantee:  
1. For your gas, we guarantee our prices will always be cheaper than British Gas, wherever you live in the UK.  
2. For your electricity, we guarantee our prices will always be cheaper than the prices charged by the regional electricity supplier for the area where you live.  
3. And for your complete peace of mind we guarantee our prices will always remain competitive compared with the cheapest standard tariffs available from the "Big 4" suppliers.  
For full details, contact:  
**0800 955 5247**  
And with no minimum contract, it's risk-free.  
UTILITY WAREHOUSE (07/11)



**CLASSIFIED**

**Call 0800 955 5247 to advertise**

**HANDYMAN**

**Handyman Services**  
Home, Office & Garden

Gutter Cleaning, Repairs & Replacement  
Welding Repairs & Fabrication  
Fascias, Soffits & Windows  
Patio & Driveway Cleaning  
All Garden Work, Flagging,  
Fencing & Turfing  
Interior & Exterior Painting  
Plumbing & General DIY  
*You Name It - No Job Too Small!*  
Tel Neil: **01925 757905**  
Mob: **07813 201850**  
handymanserviceslymm@hotmail.co.uk

(05/11)

**HAIR & BEAUTY**

**PROFESSIONAL MOBILE** hairstylist, creative cutting, colour/colour correction, including foiled highlights. Tel: **Lorraine 01925 755441 / Mob 0786 7910805.**

(09/11)

**Mobile Beauty Therapist Phoebe Elizabeth**, Facials, Manicures, Pedicures, Aromatherapy Massages, Waxing, Pamper Parties, all in the comfort of your home Tel **07932 990 031**, visit [www.PhoebeElizabeth.co.uk](http://www.PhoebeElizabeth.co.uk)

(08/12)

**HEALTH CARE**

**THE WHITE ROOMS PHYSIOTHERAPY** and Wellness Centre. Rapid expert assessment and treatment of all musculoskeletal injuries. Spinal Specialists! Discover and tackle the cause of your pain! **11, Henry Street, Lymm, Cheshire WA13-0LT.** Tel: **01925 752333** Mob: **07903 822700.**

(12/11)

**HYPNOTHERAPY**

**MICHAEL MAHONEY** clinical hypnotherapist for IBS, Stress, Anxiety and many other problems. Medical Research project experience, BUPA Service Provider. For **FREE information sheet please email** [TimelineServices@aol.com](mailto:TimelineServices@aol.com) or ring **01925-658322** [www.healthyaudio.com](http://www.healthyaudio.com)

(06/11)

**IRONING SERVICES**



**Carol's Ironing services**  
NEXT DAY PICKUP & DELIVERY SERVICE  
Lymm  
Tel: **01925 767945**  
Mob: **07979 948197**

(07/11)

**JEWELLERY**



**evans & co**  
JEWELLERY & GOLDSMITHS  
**Jewellery Workshop**  
39 London Rd, Stockton Heath, Warrington, WA4 6SG  
Quality repair, remounting, design work and setting finished to a high standard.  
Loose certificated diamonds and gemstones supplied.  
Stockists of fine contemporary British Swiss and German jewellery.  
Tel: **01925 269292**

(11/11)

**KITCHENS**

**LYMM KITCHEN & BATHROOM PROFESSIONAL INSTALLATION.** Ceramic wall & floor tiling. For free estimates and advice contact **Rob Evans** on **01925 752623** business or **07763 770408** mobile. Est 2002. Local references provided

(13/11)

**LOCKSMITH**

**CHESHIRE LOCKSMITHS LTD** UPVC Door Specialist. Non Destructive Entry Service. Free Quotations. Lymm Based Business. Contact **Tony 07774 805 588.**

(14/11)

**OPTICIANS**

**ADCOTT OPTICIANS.** State of the Art opticians in the heart of Lymm Village. Comprehensive sight tests and a wide choice of spectacles tailored to you, whatever your budget. **01925 757075**

(10/11)

**PAINTING & DECORATING**

**ANTHONY MASON PAINTER AND** decorator Over 25 years experience. Neat, clean, reliable service. All aspects including papering, paint finishes, colour advice, signs and furniture painting. Tel. **Tony Mason: 07962532811.**

(08/11)

**N & K DECORATING SERVICES,** High Class Professional Decorators, Paper Hanging Specialist, Internal and External works undertaken, Lymm Based Company, Free Quotations. Call **01925 759936** or **07783 068377.**

(14/11)

**STRIP 4 U, ALL STAIRCASES, WALLS,** ceilings, Artex and woodwork professionally stripped. Quality painting and decorating service for interior/exterior. Fully insured clean and tidy. Call **Carl** for a **FREE ESTIMATE** on **01925 657469 / 07950 385904**

(02/11)

**PAYROLL**

**WHY TRY TO BE A PAYE EXPERT?** Watkinson Black can provide a cost effective payroll service, releasing you to concentrate on your business. For further details please phone: **01925 413210** or e-mail: [info@warringtonaccountants.co.uk](mailto:info@warringtonaccountants.co.uk)

(06/11)

**PHOTOGRAPHER**

**BRENDA GREEN ABIPP.** Qualified professional photographer for People, Environmental Portraits, Weddings, PR, Special Occasions. Established 30 years. websites. [www.brenda.green.co.uk](http://www.brenda.green.co.uk) [www.brendagreen@demon.co.uk](http://www.brendagreen@demon.co.uk) Tel. **01925 753580.**

(15/11)

**PICTURE FRAMING**

**EDGAR ART & FRAMING,** 19b The Cross Lymm. Picture framing, original art, jewellery, gifts and greetings cards. (Turn right at The Terrace Brasserie & Cafe and right again at the far end). Tel **01925 754700.**

(06/11)

**PLASTERING**

**B.E.A. PLASTERING OF LYMM**

Full rooms plastered • Skimming  
Bonding • Stud walls built  
All repair work large or small  
Tyroleaning/Rendering

Call David anytime on **01925 753966** or **07786 245068**

[www.beaplastering.co.uk](http://www.beaplastering.co.uk)

Member of the Guild of Master Craftsmen

(03/11)

**LYMM PLASTERING**

Time served Tradesman

Clean and reliable  
Fully insured

All areas covered  
No job too small



**Brian Gaffney**  
Tel: **07967 087034**  
(anytime)

(11/11)

**To advertise**

**Call FREE**  
**0800**  
**955**  
**5247**

**PLUMBING**

**CL PLUMBING AND GAS SERVICES**

Local honest plumber covering all aspects of plumbing and gas works. Boilers and central heating installed and repaired. Bathroom suites supplied and fitted. Cookers and fires fitted. Landlord gas safety checks. All plumbing emergencies - 24 hour call out. No job too small, OAP Discount rates. Tel **Craig 01925 819692 07851 405466** [www.clplumbing.co.uk](http://www.clplumbing.co.uk)

(08/11)



**Professional Plumbing and Building Maintenance**  
All aspects of plumbing & building maintenance from leaks, guttering, washing machines, central heating and full bathroom installations  
Call Mike (resident) today for a **FREE QUOTATION**  
**T: 01925 740537**  
**M: 07821 695798**

(08/11)

**PB PLUMBING.** All domestic and commercial work. Fitted bathrooms and tiling. Small jobs welcome. Free quotes. Fully insured. C&G qualified. Gas Safe Registered Call **0161 928 3253** or **07821 554867** or Freephone **0800 824 7747** or visit [www.pbplumbing.co.uk](http://www.pbplumbing.co.uk)

(08/11)



**STEPHEN ROBERTS**  
Plumbing and heating, installations and servicing, boiler breakdowns, system upgrades  
free estimates  
**CORGI REGISTERED**  
Tel: **07830 331231**

(14/11)



**Plumbflow Ltd**  
Plumbing and Heating Services  
All plumbing & gas installation/repairs  
boiler replacement/servicing  
bathrooms  
Call today for a **FREE QUOTATION**  
**01925 468003**  
[www.plumbflow.com](http://www.plumbflow.com)

(06/11)

**PIANO TUITION**

**VISITING 1-2-1 PIANO/KEYBOARD TUITION.** Experienced open minded tutor. 100% exam pass rate (60%+ merit/distinction). Flexible informal approach. First 5 lessons half price till January 2011. Call **Tony Hopkins (Dip ABRSM) 0161 973 0312** or mobile **07591 696388.**

(12/11)

**RE-UPHOLSTERY**

**TRADITIONAL** and modern re-upholstery. Dining chairs, headboards, 3-piece suites etc. Customer's own fabric welcome. Tel: **Orchard Soft Furnishings 756388.**

(12/11)

**ROOFING**

**J & S ROOFING.** Roofing repairs & complete replacement. Built up flat roofing, Slating, Tiling, Fascias, soffits and guttering Free quotes, references available. Tel: **0781 488 0246 & 0788 639 0444.**

(03/11)

**SITUATIONS VACANT**

**POWERPOINT EXPERT REQUIRED** with advanced skills in design of compelling looking slides. Ideally, contractor happy to work from home. Please contact [sueaspinnall@exceeduk.com](mailto:sueaspinnall@exceeduk.com)

(08/11)

**TAXI / PRIVATE HIRE SERVICE**



**Frazer's of Lymm**  
Private Hire Service • Good local rates  
Reliable friendly service • up to five seater  
Airport • Station Schools • Business or pleasure for OAPs  
Contact **Nigel** on **01925 754426** or **Mob 07812 674822**

(12/12)

**TAXI / PRIVATE HIRE SERVICE**

**LARRY'S CARS.** Airport transfers and private hire. All UK airports covered. Over 10 years experience in the Lymm area. Call **01925 755060.** Mob **07989 342179** or email [anthony.grace@btconnect.com](mailto:anthony.grace@btconnect.com)

(08/11)



**Silverfox Private Hire**  
Black, discreet 5-seat Chrysler Voyager for all occasions: Airport Transfers, Corporate Travel, Contract Work.  
Any destination, Professional, reliable service Tel: **07964 194150**

(08/11)

**TREE SURGERY**



**R & R Tree Services**  
Tree Surgery • Pruning  
Hedges • Turfing • Fencing  
Flaggging  
All jobs no matter how big or small  
Richard Jennings  
M: **07802 512263**  
T: **01925 750418**  
[www.randrtreeservices.co.uk](http://www.randrtreeservices.co.uk)

(03/11)

**TUTORS**

**CHESHIRE TUTORIALS** offers tuition. Primary to 'A' level. Tutors especially primary maths, science and English welcome. Tel: **01925 758296.**

(09/12)

**FRENCH OR SPANISH TUITION** for conversation, exam preparation or business. Learn a new language, improve your language skills or prepare for your GCSE or 'A' Level exams. Contact: **Suzanne** on **01925 759597** or **07790 965250**

(09/11)

**TV - SATELLITE**

**AERIALS 2000** of Lymm. No job too small. All work guaranteed. Aerials and satellites supplied and fitted. Sky subscriptions available. OAP reductions. Sky Digital / On Digital. 7 days a week. Tel: **01925 753427.** Mobile: **07712 632315.**

(12/11)

**WINDOWS & GLAZING**

**NEIL COPELAND WINDOWS & Conservatories Ltd.** Specialist in uPVC double glazing windows, doors, porches, conservatories, also fascias and guttering. FENSA registered. All work guaranteed. Tel: **01925 756138 / 07961 361550.**

(12/12)

**SP GLAZING** for all your glazing requirements, double glazed units including failed and misted units, broken windows, mirror fixing. Kite marked to B/S. Time served glazier with over 30 years experience. For a friendly no obligation quote tel **Sam Pendlebury** on **01942 671859.** Mob **07919 660296.**

(04/11)

**MOTORING SERVICES**

**CAR SALES**



**PARKVIEW CAR SALES**  
We buy and sell **QUALITY CARS**  
Best price paid  
Telephone Peter on **01925 575737 / 07957 545479**  
23 Podgate Lane  
Podgate, Warrington  
Cheshire, WA1 3RS

(06/11)



# Banner & Co

Independent Residential Sales and Letting Agent



## PROPERTIES ARE MOVING!

Let us show you how we sell / rent our properties.

- As a privately owned company we have the ultimate incentive to sell/rent your property for as much as possible in the best possible timescale
- Open 7 days a week
- Advertising both locally, nationally and via the web
- Ask about our rent guarantee scheme
- Free market appraisal to sell or let your property

## JOIN IN OUR SUCCESS

If you are considering moving now or in the future, or would simply like some advice regarding your property please contact Linda or Andy



01925 753636  
[www.bannerandco.com](http://www.bannerandco.com)

Please note that if you have already instructed another agent, we would advise you to check any agreement you may have to ensure you are not liable for more than one commission by instructing us as your agent

