

**Lymm**

# Life

**FREE EVERY MONTH**

June 2010  
Issue: 135



Lymm.com

Take a look!

## Lymm May Queen Special

See centre pages



**Banner** & Co

Independent Residential Sales and Letting Agent

See our main advert on the back page for details

01925 753636

**SPECIAL OFFER**  
Free Initial Consultation



www.gavinismydentist.com

GeniLUX | DentalSolutions

T:01925 75 65 65



**KITCHEN REPLACEMENT DOORS**

**SAVE £££**

**Wakefield Bros DIY**  
208 ORFORD LANE  
01925 631590

 **LYMM PARISH COUNCIL**  
Approved by Lymm Parish Council as the official magazine for Lymm

**Regular news updates at [www.lymmmlife.co.uk](http://www.lymmmlife.co.uk)**



**Editor**  
Gary Skentelbery

**Production**  
Paul Walker

**Business Manager**  
Tony Record

**Advertising**  
Freephone  
0800 955 5247

**Editorial**  
01925 623630

**Email**  
info@lymmlife.co.uk

**Websites**  
www.culchethlife.com  
www.frodshamlife.co.uk  
www.lymmlife.co.uk  
www.warrington.tv  
www.warrington-worldwide.co.uk

**Address**  
New Media Centre  
Old Road Warrington  
WA4 1AT

*Lymm Life is published monthly by Orbit News Ltd.*

*The contents of this magazine are fully protected by copyright and nothing may be reprinted or reproduced without prior permission of the publishers.*

*The publishers are not liable for any statement made or opinion expressed by third parties in this publication.*

*Printed by TwentyFourSeven*

# Editor's Comment



**I AM delighted to say that the annual Lymm May Queen Festival will be proceeding as normal.**

As you will see from our special report in the centre pages the village very nearly didn't have a festival this year.

Thankfully common sense prevailed and thanks to former organiser Lynn Shaw putting herself forward, this year's event can proceed as planned.

Unfortunately, judging by the many comments left under the report on our website I fear there has been some bad blood spilled.

I do hope those involved can put the whole sorry episode behind them and move forward in a positive manner for the benefit of the village and most importantly the May Queen event.

This event is meant to represent

everything which is good about our community and provides a massive boost to the local economy.

It is also the crowning glory for our May Queen and Rose Queen, a day they will cherish and remember for the rest of their lives.

I am sure all those who are involved in helping organise such events want to see Lymm May Queen survive and thrive in the future.

So lets all make sure it is a major success and put any misgivings behind us about what has gone on in the past - and look to the future.

Meanwhile we mustn't forget the annual Lymm festival which is also looming on the horizon.

Once again I am sure a lot of hard

work has been going on behind the scenes from a dedicated bunch of volunteers.

Keep up the good work and lets hope the sun shines on Lymm and our England team in the world cup!

## Get ahead at the WI

CHESHIRE entrepreneur Kate Clarkson turned heads at Lymm WI when she showcased her range of exotic headgear.

The farmer's wife turned businesswoman gave a talk at the meeting about the franchise she set up selling and hiring hats and accessories.

**R + N STANHOPE**  
**Coal and Log Supplies**

Best Quality Coal  
Smokeless Fuel  
Caravan Club, Certified Location  
**Open 7 Days**  
Broomeedge Farm  
Burford Lane, Lymm WA13 0SE  
**Tel/Fax: 752830**

**Menopausal Problems?**

CHESHIRE Natural Health **We can help**

**Ask about our Menopause Naturally Treatment Plan!**

Please call for details  
www.menopause.naturally.co.uk Tel: 01925 730123  
Cheshire Natural Health, Beehive House, Torporley Road, Stretton, Warrington

**Call in the professionals!**

GreenThumb's professional treatments ensure your lawn looks lush, green and healthy. With prices starting from £14 per treatment, you can have a beautiful lawn for less than the cost of doing it yourself, and without the hassle!

Call your local branch today for a FREE lawn analysis and no obligation quote on...

**01925 210669**

**GreenThumb** LAWN TREATMENT SERVICE

**www.greenthumb.co.uk**

from as little as **£14** (incl VAT)

www.greenthumb.co.uk



# All set for Lymm Festival

## June 24 - July 4

### THE 2010 Lymm Festival will be a feast of entertainment for all the family.

As well as the usual mix, there will be several special events designed for families to enjoy together.

The Street Fun and Food Fest, which starts the event on June 24, is always a big draw and this year, as well as the delicious food, the Astral Circus will be entertaining the crowds.

A beautiful Big Picture painted in sections by enthusiasts, and all fixed together to create a huge image of a painting by the artist Helen Bradley will be on display at the event. There will also be some other surprises turning up!

#### Wonka's Golden Ticket

On Saturday June 26 from 12 noon to 4pm there will be a huge Family Fun day in Ridgway Grundy Park, with a mass of entertaining activities planned, many centred around peddle power.

There will be a Best Dressed bike/trike/scooter parade, a display by Ramp Riders and a Vintage Bicycle display including a Penny Farthing. There will be games and activities, a Wonka's Golden Ticket to find, a performance by Ellie Dibben, a very talented young lady from Lymm, and the afternoon will be rounded off by a Teddy Bear's Picnic.

Thanks to a grant from the Stronger Together South Warrington Fund, famous chain-saw carver Tim Burgess

will be creating a beautiful Storyteller's Chair for Oughttrington Community Orchard, and also a trail of woodland carvings around the dam. He can be seen working on Sunday June 27 at the orchard and on Sunday July 4 at the dam (check the programme for the other days you can watch).

Four storytellers will be working in local schools and they, and the children, will be telling tales at the dam on July 4.

There will also be a Quiz trail to follow - the answers can be found by reading the poems placed around the dam by the rangers, listening to the stories and searching for the new carvings.

As usual there will be concerts, poetry, exhibitions, Comedy Night at the Spread, the Open Gardens, the Festival Blues Night, as well as the enormously popular Art in the Garden. The scarecrow trail theme this year is The Good, The Bad and The Ugly!

Some new events planned include an Evening with Martin Edwards - a highly successful crime writer (and Lymm resident) who will read from and talk about his book Dancing for the Hangman, a novel about Dr Crippen, a poetry session for children with Craig Bradley, acclaimed poet and author, a Salsa Night with tapas, and an evening of local talent at the

Venue.

A major coup for the festival is to welcome, hot from a week at the famous Carlyle (one of New York's top cabaret clubs), the "highly idiosyncratic chanson diva" Barb Jungr (pictured). Courtesy of the Cinnamon Club, she will be performing her stage show "The Men I Love" with her pianist Simon Wallace. Recently she appeared in the Independent on Sunday's 'Hot List' of people, things and fashion in the UK, and her jazzy interpretations of Dylan, Elvis and Nina Simone have been wowing the crowds wherever she has appeared.

Instead of an outdoor picnic, this year the festival is holding an indoor party at the Village Hall. Party @ The Rocky Horror Picture Show will be an opportunity for those who like to dress it up, shake it down, and have a great sing a long, to watch the film and dance the night away.

For the full programme check out the website [www.lymmfestival.org.uk](http://www.lymmfestival.org.uk) from the end of May.



**Domestic Bliss**  
*Quality time is Bliss*  
 we are here to help with all your domestic needs  
*Need a helping hand?*  
 Buy our time, so you can have yours  
**Tel: 0161 425 7644**

**Sophies Soft Furnishings**  
**Custom made curtains, cushions, roman blinds etc**  
*Choose from our range of fabrics or supply your own*  
 For free home visit or advice ring **Anne on 01925 754446**  
[www.sophiessoftfurnishings.co.uk](http://www.sophiessoftfurnishings.co.uk)  
**3 Holly Bank, Cherry Lane, Lymm**

**Whites Sports Warrington Market**  
 1901 - 2001 - 100 YEARS OF EXCELLENCE  
*Specialists in:*  
 Darts, Bowls, Snooker, Air Guns, Walking Sticks, Warrington Town Merchandise, Rugby, Cricket, Football  
**GIFT VOUCHERS AVAILABLE**  
 Telephone/Fax: **01925 631531**

**Kids Planet - Beamont**  
 O'Leary Street  
 Warrington  
 Cheshire  
 WA2 7RQ  
 01925 630 879  
 Open 07:30 - 18:00

**Kids Planet - Warrington**  
 Ebenezer Chapel  
 Ebenezer Place  
 Leigh Street, Warrington  
 Cheshire WA1 1UL  
 01925 417 350  
 Open 07:00 - 19:00

**Kids Planet - Lymm**  
 29 Eagle Brow  
 Lymm  
 Cheshire  
 WA13 0NA  
 01925 759 220  
 Open 07:00 - 19:00

**Kids Planet - Widnes**  
 Kingsway Learning Centre  
 Victoria Road  
 Widnes  
 Cheshire WA8 7QY  
 0151 257 7079  
 Open 07:30 - 18:00

**Kids Planet**  
 ... A WORLD OF DIFFERENCE  
 We offer the world as seen through the eyes of a child. We give the highest standard of day care and education creating a unique home from home for our children.

- Flexible opening times
- Experienced and enthusiastic staff
- Ultra secure environment with CCTV
- Healthy nutritious menu
- Indoor and Outdoor play areas
- Excellent Ofsted Reports

[www.kidsplanetdaynurseries.co.uk](http://www.kidsplanetdaynurseries.co.uk)

**Smart FURNISHINGS**  
 Wide Selection of Affordable Quality Furniture & Carpets  
**Vale & Bridgcraft Stockists**

**Recliner CHAIRS from only £569**

**Full range of SPECIALIST FURNITURE**

**All stock carpets include FREE fitting & underlay**

**FREE Local Delivery • FREE parking**  
 Established family business  
 OPEN: Mon-Fri 9am - 5.30pm, Saturday 9am - 5pm  
[www.smartfurnishings.co.uk](http://www.smartfurnishings.co.uk)  
**Smart Furnishings**  
 Chapel Lane  
 Stockton Heath  
 Warrington WA4 6LL  
**Tel: 01925 267518**

and many more top names

# What's On in Lymm

in association with  
**LYMM PARISH COUNCIL**



**June 8**

LYMM PARISH COUNCIL  
Lymm Parish Hall, 7.30pm  
Members of the public welcome

**June 12**

LYMM MAY QUEEN  
Parade 1.30pm

LYMM LIONS GROUP  
Meet: Bridgewater Club, Lymm  
1st and 3rd Tuesdays of the month, 8pm  
Contact: 0845 833 5729

LYMM THURSDAY EVENING BRIDGE CLUB  
Lymm Village Hall every Thursday 7pm

MAPLE LODGE ART GROUP  
Meet each Wednesday 9.30am - 12.30pm  
Maple Lodge Guide HQ, Pepper St, Lymm  
Details: 01925 755126

ROTARY CLUB OF LYMM  
Meet every Wednesday at Statham Lodge Hotel 7.15pm  
for 7.45pm  
Contact the secretary 01925 755757

LOVING HANDS  
Knitting for charity at Lymm Methodist Church,  
2nd and 4th Thursday each month,  
1.30pm - 3pm. Details: 01925 823614.

MARKET LUNCHES  
Eagle Brow Methodist Church  
3rd Thursday in the month  
Light lunches 12 noon till 2pm  
All proceeds to Opening Doors Charity, Warrington

LYMM SCOTTISH COUNTRY DANCE CLUB  
St Mary's Church Hall  
Second and fourth Fridays (Sept - May) 7.30pm  
Details: 753853

LYMM BAPTIST CHURCH DROP/LUNCH  
Higher Lane, Mondays (during term time),  
12 noon to 1.15pm, £2.50

LYMM JUBILEE GARDENING CLUB  
Meet Third Wednesday of the month  
Lymm Baptist Church, Higher Lane  
7.30pm

Visitors welcome  
£2 includes tea and cake

Nonprofit making community organisations who  
would like to feature in the  
What's On Column  
should contact Lymm Life on

**01925 631592**

# Ellie sings 'Whistle Down the Wind' for Sir John Mills



**LYMM singing sensation Ellie Dibben sang 'Whistle Down the Wind' at a tribute event to unveil a blue plaque at Pinewood Studios in memory of show business veteran Sir John Mills.**

The star-studded event to mark his 70-year career was attended by his daughters Juliette and Hayley Mills and their families as well as a host of other celebrities and Robin Gibb CBE, annual president of The Heritage Foundation.

Other celebrity guests included Maxwell Caulfield, Leslie Phillips OBE CBE, Nicholas Parsons OBE, Robert Lindsay, Susan George, Simon McCorkingdale, Sylvia Syms OBE, Jeremy Irons, and Nigel Havers.

Organisers asked Ellie to sing the famous song after the novel written by Sir John Mills' wife and the original film starring Hayley Mills. The 11-year-old has been busy singing her country tributes at charity

and celebrity events around the UK since being talent spotted by 1960s music legend PJ Proby last autumn.

She met with him last October and after being invited to rehearse at his studios in the Cotswolds she performed with him on stage at a celebrity Christmas lunch.

Now PJ Proby has written two songs for Ellie, which she plans to record on her first album later in the year. The youngster will also perform in front of a home crowd at Lymm Festival on June 26 as part of a packed summer schedule of performances.

Her mum, Carolyn Dibben said: "Added to the other celebrity dinners and a summer ball, this is getting to be quite a busy year for Ellie!"

**Land Builders  
&  
Property Repairs Ltd**

**General Building  
Extensions  
Alterations**

Woodbine Road, Lymm  
**Tel/Fax: 01925 756265  
Mob: 07810 710210  
Email: landbuilders@landt.freeseerve.co.uk**

## The Lymm Cross Factor talent show

A NEW talent show is set to take place in Lymm in aid of Cotebrook Home and Lymm May Queen Festival.

The Lymm Cross Factor Talent Show is open to anyone who thinks they have got a talent for anything, not just singing.

The winner will get the chance to perform live at the May Queen Festival on June 12 and play a live gig at The Venue as well as winning £100 cash.

Heats are being held at the Venue on Sunday May 16 and 23rd with the final at Lymm Rugby Club on Sunday June 6.

Entry forms are available from The Venue and Rushgreen Garage.

To register and for further details call 07748527601.

Entrance fees are £2 for Under 18s, £5 for under 18s groups, £5 for over 18s and £10 for groups.

## Little Heath Farm Shop



**Quality Home-Grown Potatoes, Veg and Local Produce**

Want to cut down on your food's food miles?  
with **Reasonable Prices and Free Parking**

Home Grown  
Cheshire New Potatoes  
Now Available

Our fresh, home reared Aberdeen Angus and Hereford Beef, bred and reared on the farm at nature's own pace, in Dunham Massey's lush pastures. All meat is matured prior to packing, with minimum food miles.

**Also Free Range Home Produced Pork, Local Lamb, Sausages & Bacon**  
All major credit cards taken



**0161 928 0520**



www.littleheathfarmshop.co.uk Open 10am till 6pm Daily  
Cow Lane, Dunham Massey, Altrincham, Cheshire, WA14 4SE




**Zazique Photography**

For all special occasions

- Weddings
- Parties
- Portraits and more

Visit our website for more information  
[www.zaziquephotography.co.uk](http://www.zaziquephotography.co.uk)

Email: [zazique@btinternet.com](mailto:zazique@btinternet.com)  
Office: 0844 879 7138 Mobile: 07760 881 325

## The Complete Kitchen & Bathroom Service

We design and install all types of kitchens and bathrooms. Our comprehensive service includes all trades:

Lighting • Tiling • Flooring • Decorating etc

One local company start to finish

## Village Designs

Visit: [www.villagedesigns.co.uk](http://www.villagedesigns.co.uk) or  
Ring Jeremy on 07810 421243



Love Summer with  
**Zarina Boutique**

stockists of:

Adini • Emreco • Masai  
Viza-Viz • In Town  
and our new young fashion label  
Culture

Fossil • Fiorelli and Kipling  
leather goods/handbags  
jewellery and scarves

Rieker • Coprice • Jana  
and a wide selection of wide fitting  
and fashion shoes

**Tel: 01925 766 247**  
Unit 26 CPS Centre, Culcheth  
(above Sandbury's)



# Welcome to a proper bank



At Handelsbanken relationship banking still lives up to its name. With all key decisions made locally by us at the branch we are able to offer a highly personal banking service that is designed to meet your individual requirements.

We provide all the main services that high street banks provide, from day-to-day transactional banking, to the more sophisticated needs of the modern business. Our Individual Banking service is designed for high net worth customers who need a bespoke

offering with easy access to their manager. Putting the needs of the customer ahead of all else lies at the heart of everything we do. We tailor our current accounts, mortgages and loans to your individual requirements.

Chris Clarke  
Karen McComb

Corporate Account Manager - Tel: 01925 575706  
Individual Banking Manager - Tel: 01925 575708

1st Floor, 760 Mandarin Court  
Centre Park, Warrington, WA1 1GG  
[www.handelsbanken.co.uk/warrington](http://www.handelsbanken.co.uk/warrington)

## Handelsbanken



# Lymm Veterinary Surgery

10 Booths Hill Road, Lymm

Tel: 01925 752721

## Kennel Cough

Kennel cough – otherwise known as infectious bronchitis, is a contagious disease of the upper airway which affects dogs of all ages. The disease is caused by a mixture of viruses and bacteria which pass easily from dog to dog in boarding kennels, training classes, shows or on walks.

Dogs usually develop a harsh dry hacking cough which can often be so severe it sounds as if the dog is choking or retching. Other symptoms include inappetance, fever and runny nose or eyes.

Untreated, kennel cough can last for 3-4 weeks and your pet

will be contagious to other dogs even after the clinical signs have regressed.

The good news is that kennel cough can be prevented by a simple vaccination available at Lymm Veterinary Surgery. We generally recommend the vaccine is given 10 days before attending kennels or classes. At present we are also offering the kennel cough vaccination for HALF PRICE when taken at the same time as a dog booster vaccination.

So don't take any chances with this condition, contact us now to ensure your dog is covered.



**HALF PRICE**  
Kennel Cough Vaccination  
when taken with Dog Booster Vaccination



### Consultations by appointment

Mon – Fri: 9am - 6pm

Sat: 2pm - 3pm

Closed for lunch between 1pm-2pm

### General Opening Hours:

Mon – Fri: 8.30am - 6pm

Sat: 1pm - 4pm



## 24 HOUR EMERGENCY SERVICE

**Bramble Lodge Day Nursery**  
Birth – 5 years  
Good quality childcare and education in a homely environment.  
Next to Lymm High School  
[www.bramblelodge.co.uk](http://www.bramblelodge.co.uk)  
01925 757597  
36 Oughtrington Lane • Lymm

**BYTEWYSE COMPUTERS LTD**  
THE SMARTEST CHOICE FOR SYSTEMS & SUPPORT

- Custom built PCs to meet all requirements
- Full Windows 7 supply and support
- Free home delivery and installation with up to 24 months warranty
- PC repairs and maintenance
- Remote Access Support
- Networking and PC support contracts for small or home businesses
- Call us now on 01925 759658

[www.bytewysecomputers.com](http://www.bytewysecomputers.com)  
59, PADDOCK VIEW, LABKEY LANE, THELWALL, WARRINGTON, WA4 2TF

**Abbey Leys Farm Shop**  
*Fresh Farm Food at its Best!*  
Organic Free Range Eggs • Goose and Duck Eggs • Pickled Eggs  
Home Grown Potatoes • Fresh Fruit and Vegetables  
Farmhouse Cheshire Cheese • Butter • Fresh Milk  
Farmhouse Ice Cream and Lemon Cheese  
Opening Times: 9.00am - 5.30pm Mon - Sat. Sun 10.00am - 4.00pm  
**ABBAY LEYS FARMERS' MARKET**  
First Sunday each month 10am - 2pm  
**Tim & Janet Harrison**  
**753465**  
Peacock Lane, High Legh

**Thelwall Upholstery**  
**FOR THE MOST COMPETITIVE RATES IN THE AREA**  
49 Knutsford Road, Grappenhall WA4 2NR  
Tel: 01925 604770  
*For all your upholstery needs*  
**SPECIALISTS IN:**  
• Re-filling Cushions • Re-springing • Full Re-upholster  
• Dining Furniture • Headboards  
A wide range of sample books to choose from  
All at competitive rates  
PHONE FOR YOUR FREE ESTIMATES



# New music room hits the right note



A special open day at Cotebrook Home saw the opening of a special music room.

Lymm Round Table vice chairman Raymond Chan, who helped with fund-raising for the new facility is pictured cutting the ribbon to open the Cotebrook Day Care Centre Music Room with his daughter Amelie aged 2 watched by from left, Alistair Clarke, Cotebrook Committee Chairman, David Mowat, MP for south Warrington and Sam Fletcher music teacher.

Entertaining in the new music room are from left, Steven Stough, Peter Biggs and Kate O'Callaghan.



## LYMM GARDEN CARE EST 1990

**LAWN MOWING - Weekly / Fortnightly**

*Excellent mowers used*

**All aspects of gardening including:**

**Hedge Cutting, Tree Pruning, Lopping and Felling  
Lawn Feeds / Fertilisers**

Competitive Prices, call Greg Clarke on

**01925 757069**

## Cotebrook House

### Musical Extravaganza

Come and join us for an afternoon of fun and music. Bring a picnic and enjoy our glorious gardens. Event to be held on Sunday 5th September 2010  
Further details to follow



Respite vacancies are generally available, please contact us if you are interested

**Opposite Lymm High School  
Oughtrington Lane, Lymm WA13 0QY Tel: 01925 752583**

**Fryer's**  
More than a GARDEN CENTRE

Grow your own  
... enjoy the taste  
of summer

Could anything conjure up the delights of an English summer better than the wonderful taste of juicy fresh strawberries? And could they be any fresher than when you eat them straight from your own garden?

Really easy to grow you can plant them in the veg patch, with your favourite flowers, in growbags, in hanging baskets ...even on windowsills.

The hardest part is deciding which variety to choose. But at Fryers our horticulturally trained staff will give you all the help and advice you need to produce a deliciously successful crop.

Now all you need is the cream... and perhaps a bottle of something bubbly!

**cafe**  
AT FRYERS  
Refreshingly good food all day...everyday.

On the A50 one mile north of Knutsford  
Telephone 01565 755455  
www.fryers.co.uk



Heating costs going through the roof?  
Then use your roof to save money.

Fit panels from solarflair to save money  
and help the environment.

Renewable energy makes sense.

Tel. 01925 753 795 | Mob. 07947 211 733  
E-Mail: info@solarflairltd.co.uk  
www.solarflairltd.co.uk

**SOLARFLAIR**  
the solar panel experts

# Older residents vote for line dancing



LINE dancing was the most popular request, when senior Lymm residents were asked which activities they'd most like to see in future at Lymm Youth and Community Centre.

Around 30 older people enjoyed afternoon tea at the latest social event held at the newly refurbished centre, part of a series of monthly 'socials' aimed at senior citizens in Lymm.

They heard musical entertainment from Sam Fletcher and reminisced over old photos of Lymm as well as taking part in a quiz and playing a game of bingo.

A stall from NHS Warrington was on hand to offer support and advice on improving health and wellbeing and guests were polled about what future entertainment and activities they would like to see at the club.

The senior social event is part of a series of events being rolled out monthly for older residents in the area.

**B.A.S**  
Bespoke Architectural Structures Ltd

Transform your living space or work place with specialist glazing made to the highest standard. Family based business manufacturing, supplying and installing glazing systems to the domestic and commercial market specialising in sliding folding doors: Call us now for a **FREE no obligation quotation.**

**Best quality and service assured!**

www.b-a-s.co.uk  
Tel: **01928 579957**  
Unit 3, Sycamore Court, Manor Park, Runcorn. WA7 1RS

**JOHN PERCIVAL**  
BUILDER, EXTENSIONS & INDUSTRIAL WORK

- Experienced in all areas of building work from repairs, alterations, renovations and extensions
- Specialist advice and immediate estimates
- Accurate time schedules
- Registered with the federation of Master Builders from 1973 and listed on the Police Platinum Members Guide
- Guaranteed professional, quality work from a well established, reliable building company

**Tel/Fax: 01925 755984**  
Mobile: 07831 239612  
8 Oughtlington View, Lymm, Cheshire  
Web: www.johnpercival.co.uk Email: john@johnpercival.co.uk

**Fairway Lawns**  
treatment specialists

Services

- ✓ Scarification
- ✓ Hollow tine aeration
- ✓ Weed and Moss treatments
- ✓ Seasonal dark green lawn feeds
- ✓ Free lawn analysis
- ✓ NPTC Trained

**£11.00**

**BEST PRICES, BEST PRODUCTS, BEST SERVICE GUARANTEED**  
TEL: 0161 788 7756 | MOB: 07957 795 782  
www.fairwaylawns.co.uk

**carpediem**  
WEB DESIGN, DEVELOPMENT & PRINT

Delivering creative web and print solutions since 1999, Carpe Diem have developed strong working relationships with clients of all sizes.

- Website Development
- E-Commerce
- Branding
- Print
- SEO / PPC / Marketing
- SMS / MMS / Email Campaigns
- Hosting
- DVD / Video Production
- Product Photography

UKTV, ASICS, Onitsuka Tiger, Transform Medical Group, Otello, The Energy Ombudsman, Halle Orchestra, URBS

T: 01925 299 842 F: 0871 434 5371 E: info@cd-inc.co.uk  
60 High Street Newton-Le-Willows WA12 9SH  
www.carpe-diem.co.uk



# Youth club working hard to secure future

THE Lymm Youth & Community Centre team is continuing to work hard to secure its future.

Despite the threat posed by Warrington Borough Council's consideration of redevelopment for the site they are pushing forward to fulfill their vision for improved Youth and Community provision within Lymm village centre.

The Senior Socials are proving to be a great success. These monthly events for older people are part of an exciting cross-generational project in Warrington South called 'Bridging the Gap'. Attendees enjoy dancing, informal chat and delicious refreshments, thanks to kind donations

from The Co-op and Spar.

Over 30 people attended the social in April and many are looking forward to the next event on May 19 from 2pm-4pm.

There was also a good turnout at the recent AGM. A new committee was elected, with Steve Griffiths as Chair. The committee would like to thank all the outgoing officers for their support and the new team is hopeful that they can continue to build upon their hard work.

The committee has been busy working with and affiliating to a number of local youth, community and voluntary organizations including The Canal Boat Adventure Trust, Cheshire Community Action and The Youth Federation. The team has now developed comprehensive policies and procedures, as part of validation

by the Warrington Council for Voluntary Service. The support of these experienced organisations enables Lymm Youth & Community Association to improve services and helps secure the future of the centre.

Going forward, there are plans to launch a Youth Club on Friday nights and are looking forward to the results of our community survey.

Support for the centre can be shown by completing an online survey at [www.lymmyca.org.uk/](http://www.lymmyca.org.uk/) survey.

For more information about the centre and upcoming events, please visit [www.lymmyca.org.uk](http://www.lymmyca.org.uk) or contact secretary Neville Davies on 01925 755757.



**oven**  
oven valeting service ...punctuality, pride, courtesy...

[ovenu.co.uk](http://ovenu.co.uk)

- Range & Aga Specialists
- Ovens & Hobs
- Extractor Hoods
- Microwave Ovens
- Traditional Stoves

LET US HELP - PHONE NOW  
01925 453377

the UK's favourite oven cleaning specialists

**Reflex**  
Nursing & Care Limited

**Looking for Health Care Staff?**

We supply staff to the NHS and Private Hospitals, Nursing and Residential Homes, Social Services and The Prison Service.

We're happy to talk to you about a bespoke arrangement or quote you for a specific requirement.

- Nurses and Carers required now
- Existing Agency Staff welcome
- Competitive rates of pay / weekly paid
  - Access to NVQ
- Flexible working to suit your needs

For further information and an application form contact us now on  
**0800 169 7652**  
e: [info@reflexnursing.co.uk](mailto:info@reflexnursing.co.uk) w: [reflexnursing.co.uk](http://reflexnursing.co.uk)

Have the fireplace of your dreams today with guaranteed finance

**The FIREPLACE SHOWROOM**

Are you sick of seeing the same old fireplaces in every shop you go to? Not at The Fireplace, all our designs are made in our factory and are not available anywhere else

- Free fitting on selected fireplaces
- Free gas fire with selected Fireplaces
- Buy where the trade buys and save £££'s

**FREE FITTING** when you purchase your fire and fireplace together

**Solid Marble Fireplace including FREE Gas or Electric Fire ONLY £599!**

The Largest display of high efficiency gas fires in the North West  
Up to £100 trade in for your old gas fire

**01925 230045**  
Osnath Works, Lythgoes Lane, Warrington WA2 7XE  
Website: [www.fires2you.com](http://www.fires2you.com)

Family run business established 1996  
Opening Times:  
Mon-Fri 9.30-5pm  
Sat 10-5pm  
Sun 11-3pm

Gas Safe Registered Company



COMMUNICADO EVENTS PRESENTS

**MAM, I'M 'ERE!**

A 70'S TALE OF LIVERPUDIEN LOVE, LOSS, LUST & LAUGHTER FEATURING ABBA'S GREATEST HITS!


WRITTEN AND DIRECTED BY **SIMON PLUMB**

PERFORMED AT **ALTRINCHAM GARRICK THEATRE**

Tuesday 22nd to Saturday 26th June 2010  
7.30pm & 2.30pm Saturday Matinee

Altrincham Garrick Playhouse  
Barrington Road, Altrincham, WA14 1RZ

Tickets £13.50 (£11.50 conc)  
Box Office: 0161 928 1677  
Email: boxoffice@altrinchamgarrick.co.uk  
www.communicadoevents.com/mamimere



# Spoof musical tickets selling out fast



Simon Plumb, writer and producer of MAM, I'M 'ERE.

ABBA fans and theatre goers are being urged to buy tickets for the forthcoming spoof ABBA musical 'MAM, I'M 'ERE!' to be performed at the Altrincham Garrick in June, before they sell out.

Tickets are selling fast and the show's writer and producer Simon Plumb has been delighted with the response.

### Laughter

"I'm getting really excited now. Forget the World Cup - come and laugh your socks off at this truly hilarious night out! The Altrincham Garrick is wonderful theatre and with such a talented cast, new scenes, more songs and loads of comedy, the audience will have a great time, full of laughter and a wonderful ABBA sing-along."

The 'MAM, I'M 'ERE' story, featuring ABBA's greatest hits, is based on a young girl in 1970's Liverpool who falls in love with her sports teacher and local rugby player.

Her 'Mam and Dad' run a Drag Queen club and strongly disapprove of the relationship.

The show, in cinema terms, is deemed a PG and suitable for children from 12 years upwards. 'Watch out for Rosie O'Connor (pictured) from Stockton Heath,' commented Simon. 'She plays one of the school-girls, Ophelia, and is a natural comedienne. Without giving the game away she features wonderfully and is not to be missed!'



'MAM, I'M 'ERE!' runs from June 22 -26 June 2010 and tickets, at £13.50, are available through the Garrick Box Office on 0161 928 1677 or email boxoffice@altrinchamgarrick.co.uk

*At last! You can have a hand painted, bespoke style, solid wood kitchen. Free standing or fitted, at a price within reach of many, not just a few. Ready made units and worktops to install yourself.*

**Exclusively at Atlantic Timber**



**ATLANTIC TIMBER**  
TIMBER AND DIY MERCHANTS

**Tel: 0161 928 1696**  
[www.atlantictimber.co.uk](http://www.atlantictimber.co.uk)

Atlantic Street, Broadheath, Altrincham, Cheshire WA14 5BY





# *Now Open!*

The Rope & Anchor is the new sister venue to the Plough & Flail in Mobberley. We are now open so come and take a look, you will be amazed with the venue, food and service.



**Dunham Massey**

Altrincham | Cheshire | WA14 5RP

Telephone: 0161 927 7901

e: [ropeandanchor@thedeckersgroup.com](mailto:ropeandanchor@thedeckersgroup.com) | w: [www.thedeckersgroup.com](http://www.thedeckersgroup.com)





# RAVENSWORTH

ESTATE AGENTS WITH A DIFFERENCE

**T: 01925 755654**  
**F: 08707 512 564**

[www.ravensworthestates.co.uk](http://www.ravensworthestates.co.uk)

## Property Sales and Lettings Tel: 01925 755654

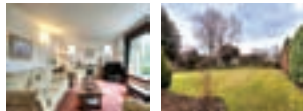
- Hours 9am to 9pm
- Highly competitive fees
- Regulated agents
- Comprehensive marketing
- Friendly, professional advice
- Local knowledge
- Excellent customer service

- FREE HIPS**
- FREE Market Appraisals**
- NO Tenant Fees**
- Out of Hours Viewings**



**LANDLORDS** - Due to our success in the letting market, we require more rental stock to meet current demands. Competitive fees guaranteed

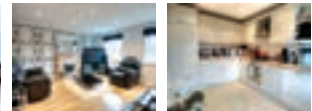
### Mere, Chester Road



A detached bungalow occupying a generous plot in the prestigious Mere triangle. Comprising hall, lounge, dining room, conservatory, kitchen/breakfast room, utility, WC, three bedrooms and bathroom. Parking for several cars, garage and large gardens.

**£407,750**

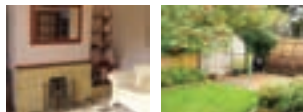
### Mobberley, Great Oak Square



A stylishly decorated modern town house in Mobberley village. Comp hall, cloakroom/ shower room, utility, kitchen/ breakfast room, dining room, lounge, three beds (one ensuite), family bathroom. Garden and allocated parking. STAMP DUTY PAID

**£275,000**

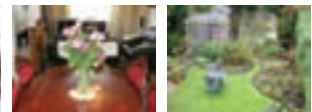
### Lymm, The Crescent



Occupying a generous corner plot and having been extended and updated in recent years. Comp hall, lounge, dining room opening to family room, fitted kitchen, utility, three double beds and bathroom. Driveway parking and well stocked gardens to three sides.

**£209,950**

### Heald Green, Bradgate Avenue

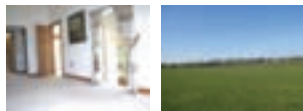


A mature semi detached home located in one of the quiet, leafy residential roads of Heald Green. Comprising hall, lounge, dining room, kitchen, utility, workshop, three bedrooms, bathroom, WC, garden, driveway parking, and garage.

**£196,500**

**TO LET**

### High Legh, Moss Hall Mews

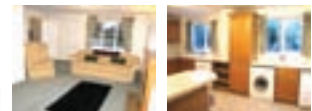


A prestigious barn conversion, set in the Cheshire countryside with views over farmland. Comprising hall, cloaks, WC, living/kitchen, utility, lounge, master bed ensuite, two further beds and shower room. Garage, storage and garden.

**£2,600 pcm**

**TO LET**

### Holmes Chapel, Maple Close



Occupying a larger than average plot and located in a popular residential area. Comp hall, cloaks/WC, lounge, dining room, kitchen/breakfast room, master bed, ensuite shower room, three further beds and bathroom. Double garage, parking, gardens.

**£1,195 pcm**

**Knutsford 01565 755444**

**Congleton 01260 269126**

**Northwich 01606 889020**





# Pupils enjoy aspirational day!

PUPILS at Oughtrington Primary School had an "aspirational day" when they were asked to think of what careers they may enjoy in the future.

Teacher Polly Truscott said: "Walking into school, I could tell by the electric atmosphere that it was to be a special day. As I entered my classroom I walked passed a number of builders and teachers, which is what you would expect to see in a school undergoing a £1.5 million extension!"

"The only difference was - these professionals were Oughtrington pupils! When I collected my class from the playground, I was confronted with a group of other professionals - nurses, doctors, racing car drivers, and authors of bird books!"

She said children were asked to think about what they aspired to be in the future and then dress up in that particular role.

"One child, Jack, came dressed as what could only be described as a tribute to Indiana Jones! He said he wanted to be an explorer so that he could make amazing discoveries, travel the world and see things other people haven't."

Polly added: "The school was a hive of activity all day. In other year groups, children were enjoying the experiences of hairdressing, knitting, Indian head massage, applying for jobs in an eco hotel, learning how to dress smartly with collar and tie, playing hockey, designing ginger bread biscuits and even a courtroom drama!"

Video footage of each child was taken and will be put into the school Time Capsule. This is to be placed in the new extension building and will only be opened 50 years from now. How interesting it will be to see who has achieved their aspirations!

Meanwhile everyone is welcome to the Grand Opening Evening of the new £1.5 million extension on Friday May 21 from 5pm-7pm.



## Lucky winners



THE lucky winners of *Lymm Life's* Easter Egg Hunt competition were all pupils at Ravenbank Primary School.

There were 49 pictures of Easter eggs around the village and the first prize went to Alexi who found 45 eggs!

Second prize was won by three sisters, Bethany, Caitlin and Isabel who found 43 eggs. Third prize was won by Maddie who found 41 eggs.

All proceeds went to the Lymm Round Table Duck Race funds.

## BROTHERSTON

*I Fix Problems!*

Electrical - Plumbing - Audio Visual - Joinery  
Bathroom Problems - Kitchen Problems

Call Steven Brotherston on

**07818 636 112**

Email: [steve@ston.co.uk](mailto:steve@ston.co.uk)





**DUNHAM MASSEY FARM**  
*Ice Cream*

Ash Farm,  
Station Road, Dunham Massey,  
Altrincham, Cheshire

**0161 928 1230**

A small family run business  
Ample Car Parking  
Enclosed Garden - Safe for Children  
Open 7 days: 12 midday till 6pm

*Come for a cone or take a tub home!*

23 Flavours of  
Homemade Luxury  
Ice Cream

Cheese and Butter  
Local Preserves  
Ice Cold Drinks  
Available



### Grappenhall Dental Practice

148 Knutsford Road, Grappenhall,  
Warrington, WA4 2PW  
**01925 210977**

Independent private/NHS practice  
Private dentistry at NHS prices\*

Full range of cosmetic/private treatments  
also available - Botox, Teeth Whitening

Easy parking/groundfloor easy access  
including wheelchair

State of art equipment / highest standards of cleanliness/cross  
infection control

Emergencies seen same day / no waiting lists

**Dr Andrew Brown and Dr Andrew Booth**  
welcome new patients

\*conditions apply



### Rosebank Naturegarten, Pepper St, Lymm

a dream come true for you and your child.

- Home from home
- Extensive grounds
- Outside learning days
- Early Years/flexible sessions
- Full Day Care
- Children from 2½ years

Did you always want to build dens, explore, do woodwork and gardening?  
...make sure your child has a head start and a childhood to sing about with a setting that gives them real space to develop, learn and play.

Our new Scandinavian Log Cabin is the natural choice for your child with its custom design and outside areas. Most of all we really do cater for children's individual needs with all play being led or directed by qualified teachers.  
*'The diverse curriculum offers opportunities for children to develop their skills and find their strengths' (OFSTED)*

Once you have been to look round you will know there can only be one choice for your child.

We can also take babies and toddlers at The Rosebank Centre, our other Pepper Street nursery, which focuses on their specific needs.



**Phone Sadie Hopley on 758959 to come and explore**



**Xross interiors**  
 16 the cross lymm cheshire waia ohu  
**01925 758298**  
 www.crossinteriors.co.uk  
 info@crossinteriors.co.uk

curtains  
 blinds  
 carpets



vinyls  
 poles and tracks  
 giftware  
 design consultation

# Green light for

**THE historic Lymm May Queen Festival - founded more than 130 years ago - had to be "rescued" for the second time in a week, following a shock walk-out by committee members.**

Thea Field aged 11 a pupil at Statham Primary School has been chosen as this year's May Queen while Rebecca Layhe aged 10 from Cherry Tree Primary School has been chosen as this year's Rose Queen.

Former May Queen organiser Lynn Shaw has stepped into the breach until September ensuring the festival will proceed as planned on Saturday June 12, with the procession setting off from outside the old council chambers on Whitbarrow Road at 1.30pm.

The parade will then proceed through the village centre before finishing on the May Queen field.

She said: "We have nothing against the previous committee and previous problems have to be parked."

Explaining her decision to help organise the event at the eleventh hour Lynn said: "I am very passionate about the May Queen Festival and we have a very good committee who are excited about the event."

A meeting of the festival committee

was held less than a week after an emergency meeting of Lymm Parish Council had come up with what appeared to be a rescue package.

But former festival chairman Sean Kerfoot said written guarantees received from the parish council were "very different" from those given verbally at the emergency meeting surrounding fears that committee members would be held liable for any damage caused to gas mains at the access to the field.

He had sought clarification from a member of the parish council - but it soon became evident that some members of the public who attended the festival committee meeting were not there to help but to carry out an agenda unknown to the committee.

Lynn, who was last involved in organising the festival two years ago, said she hoped new, younger people would come forward with fresh ideas to join the new committee.

Anyone who wants to help can contact her by emailing mrandmrschristmas@btinternet.com

Problems arose after Mr Kerfoot said this festival had been cancelled because individual committee members were likely to be held personally responsible for any damage caused to gas pipes under the access road to the May Queen Field - damage that could cost up to £250,000.

At the emergency meeting, council members decided to underwrite the event, using public funds and it was agreed it could go ahead. But when the written guarantees were received from the council, Mr Kerfoot claimed they were "very different."

Council chairman Joe Griffiths refuted this, however.

Borough council leader Ian Marks - also a member of the parish council - pledged his support for the festival.

He said: "We can't let this important tradition fall by the wayside. It is unfortunate that there has been a disagreement between people - but the festival is bigger than the personalities involved."

"We are grateful for what the existing committee has done. But we cannot let this thing be derailed."



Town crier Peter Powell leading the parade last year.

## LYMM METALS

*Buyers of all grades of scrap metal*

*Copper, Brass, Lead, Steel, Gold, Silver High Value Metals*

**Specialists in Computer Scrap**

**Tel: 01925 756376**  
**Mobile: 07831 107525**

Waste Licence No. CMS/134 720

**The Cross Clinic**  
 20, The Cross, Lymm TEL: 01925-757513

Acupuncture - Aromatherapy - Reflexology - Physiotherapy - Osteopathy  
 Chiroprody - Bowen Therapy - Hypnotherapy - Dizziness Rehab - Reiki  
 Lymphatic Drainage Massage - Counselling - Nutritional Therapy

**Compare our fees**

Acupuncture	£28	Hypnotherapy	£28
Physiotherapy	£30*	Head Massage	£28
Reflexology	£32	Counselling	£30
Chiroprody	£23	Bowen	£35
Aromatherapy	£28	Osteopathy	£35*

\* indicates slight variations between different practitioners



# or May Queen Festival



May Queen Thea (right) with Rose Queen Rebecca outside Lymm Youth Club following their selection.

## Wrought Iron Plus

for quality and style

- Gates • Gate Automation • Railings
- Handrails • Balustrades
- General steel fabrications

Free estimates & design help

Tel: 01925 753393

Mob: 07999 578780

Unit 9, Camsley Grange, Lymm  
www.wroughtironplus.co.uk

**Sextons**  
Village Bakery

**Supporting**  
Lymm May Queen

order online at:  
www.sextonsbakery.co.uk or call  
**Tel: 753669**

## WILLIAM H. LILL + Co.

Your local solicitor  
specialising in:-

- Conveyancing
- Wills & Probate
- Accident & Personal Injuries
- Divorce & Family Law

A friendly service for  
all your legal needs

Telephone: 753170 / 755668

9 The Cross, Lymm WA13 0NY

**HALMAN**  
GASCOIGNE

THE AREA'S LEADING  
INDEPENDENT ESTATE AGENCY

6 The Cross  
Lymm, WA13 0HP  
**01925 758345**  
lymm@gascoignehalman.co.uk

*Ree Chic*

First for fashion and fashion for all  
Best wishes to Lymm May Queen  
17 The Cross, Lymm, Cheshire  
Tel: 01925 756683

Trattoria •  
**BACI**

**18 The Cross, Lymm.**  
**Tel: 756067**

have you  
heard?

WE NOW OFFER HEARING TESTS

Using the latest technology  
available to help give you  
the best possible solution,  
with a discreet and  
welcoming approach.

**PENSIONERS'**  
Discounts  
available

we are here to listen to you...

to book your next appointment call:  
**adcoth hearing** 01925 757075

14a The Cross,  
Lymm, Cheshire WA13 0HP

mail : hearing@adcoff.net  
web : http://hearing.adcoff.net





**Dunham Window Cleaners**  
See the world through Dunham clean windows

Local professional window cleaners with over 20 years experience

**Services also provided:**

- Reach & Wash system for those hard to reach areas
- PVC • Roof • Conservatories
- Gutters all cleaned
- Outside of properties cleaned
- Driveways/Patios Jet Washed
- Wheelie Bins Cleaned

Jet washing service also available

Call 01925 752159  
or Steven on 07874 118219  
Glynn on 07723 507840

E: [dunhamwindows@hotmail.co.uk](mailto:dunhamwindows@hotmail.co.uk)  
[www.dunhamwindows.co.uk](http://www.dunhamwindows.co.uk)

## A56 road safety victory

A LONG-running campaign for improved road safety measures on a busy stretch of the A56 has finally won the support of borough traffic chiefs.

Double yellow lines will be introduced at the junction of Booths Hill Road and Highfield Road, Lymm - following a public debate lasting some three years.

The borough council's traffic committee reached the decision after listening to strong arguments from supporters and opponents of the scheme.

The measure is intended to remove parked cars on Booths Hill Road which obscure the view for drivers emerging from Highfield Road - particularly those turning right. It was supported by most nearby residents.

But other residents, campaigning for reduced speed limits along the A56, opposed the plan on the grounds that vehicles parked on the main road act as a deterrent to speeding drivers.

Chris Wakefield, founder of an action group calling for lower speed limits, said the yellow lines could worsen the situation at the junction.

He said: "Removal of parked vehicles will give a clear acceleration lane up to the 60mph speed limit a short distance to the west.

"This limit should be reduced to 40mph together with a proper village gateway where the limit changes."

Ian Watson, a Booths Hill Road resident, said residents had not been properly consulted and that the accident rate at the junction had been exaggerated. He believed speed was the major road safety concern.

Coun Sheila Woodyatt said she had been campaigning for improved road safety on the A56 for 10 years and welcomed the decision.

She acknowledged the concerns about speeding traffic but believed this was a separate issue.

In fact, speed limits were to be reduced along the A56 and she was grateful for the support of the A56 campaign group in this respect.

"I have been trying to get speed limit reductions along the A56 for years. But councillors can't do everything and sometimes the support of a residents' group can make the difference," she said.

## School launches 'brick buy brick' appeal

OUGHTRINGTON Primary School is organising a "Brick buy Brick" appeal offering past and present pupils, parents, grandparents, teachers, governors, staff and indeed the wider community an opportunity to invest in a little piece of Oughtrington history that will be forever "set in stone".

The "Brick buy Brick" fundraising campaign allows people to personalise their very own brick which will form part of an everlasting tribute to Oughtrington on one of the external walls of the new school extension.

To buy a brick please email [markbebb90@hotmail.com](mailto:markbebb90@hotmail.com) or [lisaawronko@aol.com](mailto:lisaawronko@aol.com) or collect a form from the school.

# Ye Olde Curiosity Shop



**We Buy and Sell  
Gold and Silver**



**Top Prices Paid**

**for scrap or broken gold & silver jewellery**

**Also Wanted: Antiques & Collectables • Ornaments • Watches • Medals**

**If you would like our buyer to call at your home  
contact John on:**

**01925 762 612 or 07882 547 303**

**Any Amount • Cash Paid Same Day**

**CPS Centre (above Sainsbury's) | 7 Common Lane  
Culcheth | Warrington | WA3 4EH**



# History repeats itself!

**A FRIENDSHIP between Lymm Royal British Legion president Ray Massey and a Dutch engineer has resulted in the village acquiring a replica of a piece of local history.**

Motor cycle enthusiast Theo Bult drove from the Netherlands to spend two nights with Ray – and deliver a replica of a brass plaque commemorating local volunteers who served with the Cheshire Regiment in the South African War, 1900-1902.

Last year, *Lymm Life* reported how Ray had found a photocopy of the old plaque among his collection of British Legion memorabilia.

At the time, Ray thought the original plaque had gone missing but in fact it was on display in a local day nursery,

built on the site of the old drill hall where it was originally on show.

But Ray thought it would still be a good idea to have a replica made for public display.

He appealed for someone who could make a replica – and Theo came forward after seeing the story in *Lymm Life*.

The pair had become friends many years ago when they collaborated on a project involving the engineering department of Twente University,

Enschede, Netherlands, where Theo worked.

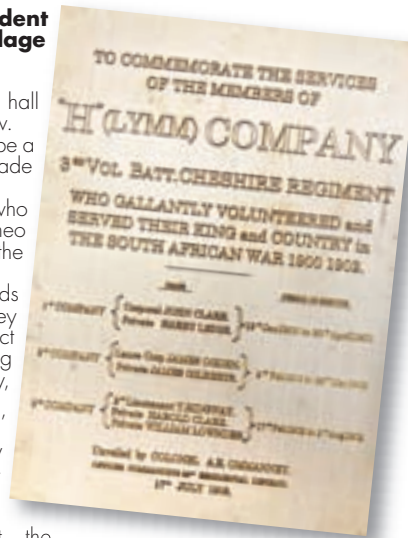
Theo suggested Ray send him the photocopy – and produced a virtually exact copy using equipment at the university.

Then he drove over to deliver it!

### Replica

The replica now hangs on display in Lymm Royal British Legion Club, although Raymond hopes it may eventually be hung in St Mary's Church.

A delighted Ray said: "It was wonderful to see Theo again. He is now 66 and about to retire. But he drove 600 miles to deliver the plaque."



## KENYON HALL FARM

Full range of soft fruit available till the end of July

Open every day  
Mon - Fri 9am - 7pm Sat/Sun 9am - 6pm

**Kenyon Hall Farm**  
Winwick Lane,  
Nr Croft, Warrington

Recorded information  
**01925 763646**

**PRIMROSE HILL NURSERIES**

**SUMMER BEDDING PLANTS & HANGING BASKETS READY NOW!**

**DISCOUNTS FOR QUANTITY**

*Caring Family Business*

*Open 7 days a week*

*Warrington Road, High Legh, Knutsford, Cheshire WA16 0SQ*

Telephone  
**01925 752635**





## P.E.T.S. ANIMAL HOTEL

Luxury Accommodation For All Your Pets

**Opening May 2010 - Bookings now being taken**

**Viewings welcome**

**SETTING NEW STANDARDS IN ANIMAL CARE**

- Hotel style living for your pets
- Unique purpose built indoor/outdoor Doggy Day Crèche
- State of the art grooming salon
- Weekly fun training sessions
- High ratio of qualified staff to guests
- Specialist knowledge of dog behaviour and training
- Reliable Dog walking / Home care visits
- Pick up and delivery service

To arrange a tour please ring Fran Jennings on 07792756545 or 01925 750418

Providing **Elite Tailor-made Solutions** for all your pets needs

27 Burford Lane, Lymm, Cheshire WA13 0SH





# Chance to win tickets for Cheshire County Show

**LYMM Life** readers are being offered the chance to enjoy a taste of the good life at the Cheshire County Show this June.

Lymm Life has two pairs of tickets for readers to win for the event that will celebrate all that is great and good about Cheshire on Tuesday and Wednesday, June 22 and 23.

More than 80,000 people visited last year and you now have the chance to join this year's fun for free.

Ticket winners will benefit from an action-packed two days and the sky is the limit with attractions guaranteed to raise spirits.

Visitors will be in good company this year with guests including Charles Collingwood and Julie Bennett, stars of hit BBC radio soap The Archers,

and The Bolddog Lings - a freestyle motocross team who will wow crowds with their extreme stunts.

Attractions also include the culinary delights of the Band of the Brigade of Gurkhas, Roberts Bakery Food Hall, a stunning display from the Gauntlet Birds of Prey Centre and the hundreds of animals competing for coveted titles.

Keeping the show's agricultural heritage alive with the wider public is the Agri-Centre - this year sponsored by Sainsbury's - which exhibits the journey your food takes from plough to plate.

Show executive director Nigel Evans said Cheshire farmers were committed to informing the public about where their food comes from.

"As the county's agricultural organisation we have a duty to inform visitors to the show about the importance of the countryside and the agricultural industry," he said.

"We want to educate our visitors so they appreciate the importance of where their food comes from, the hard work put into the food chain by local farmers and how they can help the local economy by buying local products."

Advanced discounted show tickets are available online NOW and

tickets will also be available on the gate for both show days. For more information about the show or to purchase tickets, visit [www.cheshirecountyshow.org.uk](http://www.cheshirecountyshow.org.uk).

For the chance of winning two tickets simply email us your contact details, including name, address and day-time contact number, naming the sponsors of the Agri-Centre (read article) to [info@lymmlife.co.uk](mailto:info@lymmlife.co.uk) or send your answer on a postcard to Cheshire Show competition, c/o Lymm Life, New Media Centre, Old Road, Warrington WA4 1AT.

Closing Date June 1.

**TCS**  
Tabley Computer Services

**PCs and laptop repair**

- New system design and build
- Upgrades & repairs to existing systems
- Multi PC networks
- Hard drive data retrieval & removal
- Document & file backup systems
- Virus removal & protection

**We come to you**  
**No fix, no fee**  
**No call out charges**

- Spyware removal & protection
- PC health check-up
- Internet setup & training
- Email setup & training
- PC & software training
- Digital photo printing training
- PC updates

**For all your PC & laptop needs**

Tel: 01565 650949  
Mobile: 07909 821416  
[info@tableycomputers.com](mailto:info@tableycomputers.com)  
[www.tableycomputers.com](http://www.tableycomputers.com)

Advertisers announcement

## Computer Tips from Tabley Computers!

MOST people have experienced PC nightmares at one time or another. Tabley Computers offers the following guidelines:

Won't start. 1. Switch everything off at the sockets. 2. Make sure all leads/cables are secure. 3. Check power supply is plugged in, switch everything on again.

Freezes, blue screens. 1. Spyware, inadequate/defective memory, viruses, trojans etc. 2. Problem usually resolved by having your machine serviced.

Makes noises. 1. Often a faulty moving part e.g. hard drive or a fan.

Very slow. 1. Too many programs auto-starting, adware/spyware running in background, inadequate memory. 2. A service/memory upgrade should resolve it.

If you have any concerns about your PC please contact TCS Tel: 01565 650949 / 07909 821416. We are happy to advise and assist in ensuring your computer runs at optimum levels.

## Classic Home Improvements

Established 1987

Fireplaces - Kitchens - Bathrooms - Stoves  
Granite Worktops

**Upto 50% OFF Kitchens**

**Arcadia Kitchen Range**  
8no - full colour 19mm base & wall units inc Doors, handles & cornice.  
40mm Laminate worktops  
1.5 Bowl Stainless Steel Sink & Taps  
**Only £ 2400 Inc Fitting**  
*Subject to survey*

**Woodburning Stoves From £399**

**Upto 50% OFF Bathrooms**

**Novo Bathroom Suite**  
Basin & full pedestal,  
Basin mixer tap with pop up waste,  
Close coupled pan & cistern inc duel flush & soft close seat.  
Luxury shower bath inc shower screen & bath/shower mixer taps.  
**Only £ 1595 Inc Fitting**  
*Subject to survey*

**Classic Home Improvements**  
61-67 Knutsford Rd,  
Warrington  
Cheshire,  
WA4 1AB  
Tel : 01925 445455  
[www.classichomeimprovements.co.uk](http://www.classichomeimprovements.co.uk)

**GRANITE WORKTOPS SUPPLIED & INSTALLED**  
Call 01925 445455 for a free estimates





With an increase in sales, we currently have clients waiting to purchase. Ridgeway Residential is the right choice to sell your property quickly and efficiently.  
**ARRANGE A FREE MARKET APPRAISAL TODAY!**

## FOR SALE



**17 Rushes Meadow, Lymm**  
 Large family det, 3/4 rec rooms, breakfast kitchen, conservatory, 5 bedrooms, 3 bathrooms, garage and gardens, quite location.  
**£599,950**



**15 Dyers Close, Lymm**  
 Extended semi-detached, 3 rec rooms, fitted kitchen, conservatory, 4 beds, 2 baths, rear garden, popular location.  
**£285,000**



**30 Massey Brook Lane, Lymm**  
 Detached bungalow, living/dining room, fitted kitchen, w/c, 3 beds, bathroom, garage, corner plot.  
**£235,995**



**2 Thornley Road, Lymm**  
 Ideal opportunity to acquire an end mews in need of some modernization, 2 rec rooms, kitchen, 3 beds bathroom, outside storage rooms.  
**£159,950**

## FOR SALE



**18 Warrington Road, Lymm**  
 Period semi detached, 3 reception rooms, breakfast kitchen, 3 good sized bedrooms, two bathrooms, garage, gardens, GC heating  
**£315,000**



**14 Springbank Gardens, Lymm**  
 Modern mews, lounge, dining room, breakfast kitchen, 4 beds, 3 baths, downstairs w/c, garage.  
**£275,000**



**19 High Legh Road, Lymm**  
 Semi detached with potential to extend, living room, dining room, kitchen, 3 beds, bathroom, off road parking and gardens.  
**£189,950**



**7 Waterbrige Court, Lymm**  
 Two bedroom apartment situated on the second floor, large lounge/diner, bathroom, kitchen, GCH, allocated parking and communal gardens.  
**£134,950**

**TO LET**

**165 Bucklow Gardens, Lymm**  
 3/4 bed extended modern mews w/f or f/f, Available immediately  
**£1,195pcm**

**8 Bridge Close, Lymm**  
 4 bed link detached unfurnished, Available immediately  
**£1,050pcm**

**4a Pepper street, Lymm**  
 2 bed, 2 bath executive apartment furnished, Available immediately  
**£950pcm**

**14 Fieldways, Lymm**  
 2 bed apartment second floor furnished, Available immediately  
**£495pcm**

**4 Waterbridge Court, Lymm**  
 2 beds, allocated parking, first floor, unfurnished, Available immediately  
**£495pcm**

**8 Grove Court, Lymm**  
 2 beds, lounge, fitted kitchen, top floor, furnished, Available immediately  
**£495pcm**

**TO LET**

19 The Cross Lymm Cheshire WA13 0HR T. 01925 756931 E. sales@ridgewayresidential.co.uk



www.ridgewayresidential.co.uk





**THE BARN OWL INN**

**Camra  
Pub of  
The Year  
Award**

**Twice  
voted  
Lymm  
Pub of  
The Year**

**Warrington Borough Council  
5 Star Hygiene Rating**

**Newly Refurbished**

The Barn Owl Inn, has earned it's reputation for being one of the best 'Gastro - pubs' in the area serving 7 Cask Ales.

Serving a large and varied menu, it caters for the heartiest of appetites, together with lighter bites and childrens menu, the emphasis being on healthy options.

Owned and managed by Carl Warburton, Carl says:  
*"My focus is on quality of food and quality of service, myself and my staff pride ourselves in providing an excellent dining experience"*

**The Barn Owl also boasts live entertainment every Saturday and Karaoke every Wednesday**

**TO BOOK  
Tel: 01925 752020**  
or visit:  
[www.thebarnowlinn.co.uk](http://www.thebarnowlinn.co.uk)  
Agden Wharf, Warrington Lane,  
Lymm, Cheshire. WA13 0SW

# The hidden gems of Agden

**LYMM is widely regarded as one of the jewels in Cheshire's crown - but it has its own hidden gems too.**

One such is Agden Wharf, in Warrington Lane, once a hive of industry connected with the historic Bridgewater Canal but now home to a cluster of family businesses in an attractive, waterside location which draws people from miles around.

The canal opened in 1761 and the passing years have completely changed the character of Britain's first canal to be built without following an existing watercourse. Instead of barges carrying coal from the Duke of Bridgewater's mines, it is now a haven for a colourful armada of narrowboats and cruisers belonging to leisure sailors. The area is now renowned more for natural beauty than for industry.

But at Agden Wharf business is still booming.

There's the Barn Owl pub, a unique hostelry run for the last 12

years by Carl Warburton, and famous for its cask ales and value-for-money meals.

There can be few pubs boasting such views across the Bridgewater Canal and open countryside - and few with customers calling on foot, by car and by boat!

On warm summer days there is no better place to sit and dine al fresco or enjoy a quiet drink overlooking the peaceful canal scene.

Carl has recently refurbished his cosy pub - and only had to go a few doors away to find new tables and chairs.

Burford House Furniture, a highly respected and long established furniture retailer, run by Brian and Dennis Alcock, were able to supply him with exactly what he wanted.

Burford House has extensive ranges of solid oak, ash and pine

**Kudos Furnishings**

Bespoke Upholstery and Re-upholstery service  
Footstools & Bedheads

**t: 01925 756999**  
Agden Wharf, Warrington Lane, Lymm  
Cheshire WA13 0SW



**burfordhouse**  
FURNITURE

One of the largest furniture showrooms in the area



Superb range of quality Oak, Ash and Pine furniture for the dining room, kitchen, bedroom, lounge and study. Traditional and contemporary designs.



Large range of mirrors, prints, lamps and accessories to complement your home

**OPEN 7 DAYS  
10am - 5pm**

**VISIT OUR NEW SHOWROOM  
near The Barn Owl Inn**

FREE DELIVERY THROUGHOUT CHESHIRE

Burford House Furniture, Agden Wharf,  
Warrington Lane, Lymm, Cheshire WA13 0SW  
Tel: 01925 757809  
[www.burfordhousefurniture.co.uk](http://www.burfordhousefurniture.co.uk)  
enquiries@burfordhousefurniture.co.uk

**NOEL OGDEN MOWERS**

WARRINGTON LANE, AGDEN, LYMM, CHESHIRE, WA13 0SW



**Sizzling  
Summer  
Savings**

- ✿ Petrol and electric cylinder and rotary mowers
- ✿ Hedgecutters, strimmers, shredders, blower vacs, lawnrakers & scarifiers
- ✿ All fully assembled and tested
- ✿ New cordless range in stock
- ✿ BBQ & patio bottled gas
- ✿ Servicing, sharpening & repairs
- ✿ Specialist advice & easy parking
- ✿ Mountfield 'Premier' dealer

**01925 756544**

Web: [www.noelogdenmowers.co.uk](http://www.noelogdenmowers.co.uk)  
Email: [noelogdenmowers@aol.com](mailto:noelogdenmowers@aol.com)

HAYTER  MOUNTFIELD  HONDA 



## Agden Wharf

furniture in modern and traditional styles, together with mirrors and prints to complement any home - all displayed in a bright, modern showroom. They can also provide UK manufactured bespoke furniture made to order in a variety of finishes. They offer free delivery throughout Cheshire.

In the same block is Kudos Furnishings, another long-established business providing quality personal service to a wide range of customers, with a bespoke upholstery and re-upholstery service, including footstools and bed heads and quality curtains and soft furnishings.

Again, the emphasis is on making sure the customer gets exactly what they want - which means most customers are regulars.

Noel Ogden Mowers is an independent family business that has been providing and servicing grass cutting machinery for the people of Lymm and further afield for many years - and providing a level of service that can't be matched by the major multiples. They can sell, service, repair and sharpen almost any make of equipment and provide a collection and delivery service within a 10-mile radius.

Agden Wharf has a history almost as long as the 250-year-old canal on which it stands. Like the canal, it has changed. But it is as busy today as ever, providing a range of services to local people. And what's more, it has no parking problems!

## A new face - and great food and drink

THERE'S a new face at The Spread Eagle, Lymm - and some brand new food and drink offers.

Barry Forbes has taken over the Eagle Brow pub after running another famous JW Lees pub, The Falcon, in Chester City centre, where he won many awards for his food and beer.

So the Spread Eagle became the obvious choice to launch the John Willie's Pie and Ale House.

The brewery in Middleton produces a fine range of JW Lees beers which is about to be expanded.

This summer the "Spread" will be serving "Strawberry" while in the winter the new brew will be "Chocoholic" - both described in a "Beer Bible" available in the pub.

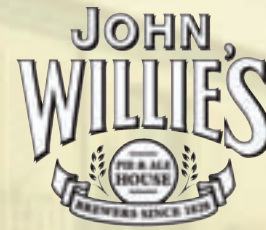
At the moment Coronation Street bottled and draught bitter is featured in the bar.

The food is home cooked and traditional with a Great British taste about it, featuring some really tasty pies that match up well with the fine beers.

The Spread Eagle is currently featuring fine premier 8oz sirloin steaks from Harefield Farm, in Lancashire - and all the food comes with great customer service from Claire and the team.

## THE SPREAD EAGLE

### Delicious range of John Willie's Pies & Ales



#### Including John Willie's Steak and Ale Pie

A shortcrust pastry pie filled with prime British steak slow-cooked in a gravy made with John Willie's premium ale. Served with chunky chips, garden peas and lashings of gravy.

#### & John Willie's Cask Ale

Named after Mr JW Lees himself, this lightly coloured, robust beer drinks smoothly and has a nutty finish. Made from ale and crystal malt, northdown and golding hops. It is a well balanced, full bodied beer.

*Meal Deals also available on Starters and Main Courses from £7.95 why not add a Dessert for an extra £2*

47 Eagle Brow, Lymm, Cheshire WA13 0AG

Tel: 01925 757467



## JOLLY THRESHER



Higher Lane - Broomeedge - Lymm, Cheshire

*Quiz night Tuesdays*

*Live entertainment Fridays*

*Jonny, Mark, Olivia and staff welcome you all to the Jolly Thresher, our newly refurbished local pub with fabulous restaurant, outside terrace and huge beer garden.*

*Good home-cooked food from our new menu, plus fine ales and wines, are served every day. Enjoy a great atmosphere and friendly service in our family-run pub.*

Please call for reservations

01925 752265

## Statham Lodge Hotel

*Lymm's Hidden Gem*

Informal Dining in the Squires Bar  
Lunch Time and Evening

Evening specials menu, changes every week

Wide selection of dishes, reasonably priced

Lite bites and sandwiches also available

Comfortable and relaxed surroundings

Free high speed internet access • Large free car park



Tel: 01925 752204

reception@stathamlodge.com

www.stathamlodge.com

Warrington Road, Statham, Lymm, Cheshire, WA13 9BP





# Let there be light!

MEMBERS at Lymm Tennis Club are celebrating the installation of new floodlights on three more courts.

The Club now has seven floodlit courts in total with a choice of playing surface of either carpet or tarmac. This puts Lymm Tennis Club amongst the very best in Cheshire in terms of the floodlit facilities available, a view endorsed by the Barbara Bloor, President of Cheshire Lawn Tennis Association, when she officially switched on the lights.

Already the new lights are proving to be a huge success and not just for senior members of the Club.

Steve Garbutt, Lymm's Coach said: "Lymm Tennis Club very generously allows children under 8 years old to be coached at the club without incurring a membership charge. This has stimulated a huge growth in that age group within the coaching programme. Approx 100 children who had coaching last summer fall into this category.

"Floodlighting is obviously essential for a year round junior coaching programme. The vast majority of children who play in the summer now play in the winter. The additional floodlights will certainly equate to more opportunities for our junior members and non members.

Over the last 18 months, the club has produced a number of county



Tim Askham (R) Chairman Lymm Tennis Club switching on the club's new floodlights with from left, mens captain Michael David, social secretary Sharron Cranston and Cheshire Lawn Tennis Association President Barbara Bloor.

standard players and currently has some of the best junior players in the county for their age. We are in effect a centre of excellence for Mini Tennis and have a number of players from outside Lymm who are attracted by the club's programme and facilities."

The floodlighting was installed by Surfacelux Ltd, a Merseyside lighting specialist, who worked right through the arctic winter conditions to ensure the installation was complete on schedule.

**Treasure your memories**  
 Your VHS tape copied to DVD  
 We can transfer your VHS tape onto DVD from as little as £15  
 All DVDs have chapter points and are supplied in a presentation case  
 Collected and delivered back to you, FREE within 10 miles of Lymm  
 Minimum order two tapes to qualify  
 For further information please call 07731 686865 or 01925 755818  
 Video Solutions

**LYMM TENNIS CLUB**  
 BROOKFIELD ROAD LYMM  
 Don't miss out, new season under way!  
 Great tennis all year round & lots of fun  
 All Levels  
 13 Courts (7 Floodlit, 4 Grass)  
 Large Clubhouse & Bar  
 A whole range of coaching opportunities:  
 go to [www.optimatennis.co.uk](http://www.optimatennis.co.uk) for more info  
  
 CALL DAVE COOPER ON  
**01925 75 5754**  
[www.lymm.net/tennis](http://www.lymm.net/tennis)

## Tennis summer camps



YOUNG tennis stars of the future enjoyed special tennis camps at Lymm Tennis Club recently. Nathaniel (3rd from left) recently won an under 9s tournament in London without losing a set!

The club on Brookfield Road, has camps running in half term and throughout the summer holidays from 9.30am-1.00pm. In term time weekly courses seven days a week.

Children start as young as four years at Mini Red level and progress through to Orange and then Green before playing yellow at about eleven years of age. All abilities are catered for from total novice to national standard.

The club has a thriving junior section with teams, tournaments, leagues and a club night on Fridays which is free to members. If you'd like to get involved please email Steve Garbutt [steve@optimatennis.co.uk](mailto:steve@optimatennis.co.uk) or call 07976 226392. Additional information can be found at [www.optimatennis.co.uk](http://www.optimatennis.co.uk)

## Rugby club celebrate Golden Jubilee

LYMM Rugby Club celebrate their 50th anniversary with a summer ball on Saturday June 19.

There will be a Deluxe Buffet, Live Band and Disco and a review of the club's vibrant and colourful history at the heart of the community in Lymm.

Tickets costing £50 each or for tables of 10 are available through the club steward or by emailing [cartwright.family@tinyworld.co.uk](mailto:cartwright.family@tinyworld.co.uk)

This last year has seen the club promoted to National 3 (North) as Champions of their league. The mini and junior section have had a fantastic season and won many trophies.

For more details visit the web site [www.lymmrfc.co.uk](http://www.lymmrfc.co.uk)



# Lymm fail to add cup to title success

**LYMM Rugby Club failed in their bid to achieve a league and cup double as they were beaten 34-13 in the Cheshire Cup Final by Sale Jets.**

But a confident Lymm side clearly demonstrated why they have been so successful in gaining promotion from League North One West.

Handling errors abounded in the early exchanges on the hard ground as teams with different backgrounds settled to produced an entertaining tussle.

Joe Knowles opened the scoring with a 21st minute penalty following handling in the ruck but the game lacked flow at this stage. Jack Turton showed confidence under the high ball as play was mainly confined to the midfield, with Ed Styles, Will Cliff and Mark Atkinson seeking that elusive opening. The Jets scrum, with Imiolek and Halsall all power and

Cheshire RFU Cup Final		
Sale Jets	34	13 Lymm

energy, exerted considerable pressure as the Jets finished the first half in the Lymm 22. Five minutes before the break, Atkinson and Styles combined to create a serious threat to the home defence, with former Lymm player Atkinson cutting through for the first try, Davies converting for a 10-3 half time lead.

The same duo combined to create try number two seven minutes into the second half. Atkinson provided the deft close range pass for Styles to score under the posts, Davies adding the extras. Five minutes later, Richard Butler started a fine Lymm move down the left. Andy Roberts and Jack Johnstone made more ground before the Jets strayed offside, allowing Knowles his second penalty. Cliff, now at fly half, tried a diagonal kick ahead, but Davies was adjudged offside. Impressive number 8 David Tait made a strong charge, followed up by Lee Imiolek, but a knock on spoiled the move. Mike Sweetman produced a fine clearance kick as the Jets' forwards were putting their side in advantageous attacking positions.

The familiar lineout drive tactic produced try three for the Jets on 63 minutes, captain Alex Shaw scoring under the posts, Davies again converting. Despite being 18 points behind, Lymm continued to produce threatening moments, with Cullinane in fine form, and their energy and spirit never waned. They fully

deserved their try, scored by young flanker Sam Mullarkey after 69 minutes, after the ball had passed through several pairs of hands on the way. Forward power took the game away from the hosts. On 77 minutes, Imiolek and Baleirara were too powerful for the Lymm defence, allowing the supporting flanker Cameron Thompson to score.

In the dying moments of a splendid match where evening sunshine had replaced early rain, Will Cliff created

the final try for Eddie Stobart.

Scorers: Lymm - Try Mullarkey. Con.Knowles. Pens. Knowles (2).

Sale Jets - Tries Atkinson, Styles, Shaw, Thompson, Stobart. Cons.Davies (3). Pen.Davies.

Team: Lymm - Jack Johnstone; Joe Knowles, Adam Fletcher, Mike Sweetman, Richard Butler; Andy Roberts. Pat Roberts; Scott Harrison, Tim Oakes, Danny Bates, Lee Pickles, Ollie Higginson, Ian Cullinane, Sam Mullarkey, Mark Sutton. Reps. Sion Williams, Keith Broadbent, Tom Hughes, Luke Emmett, Darius Miksys, Jake Ashall.

Attendance 500.

**The Dinner Club (Est 1986)  
SINGLE?**

Social events for the more discerning, unattached person.

Black Tie Balls, Dinner Dances, Dining Out-from Casual to Fine Dining, Theatre, Jazz Nights, Day at the Races, Short Breaks, Holidays Abroad  
Areas covered include Cheshire, Lancashire, Merseyside, Greater Manchester, N.Wales

Our next Ball is Friday 18th June at Northop Hall Hotel £58.00 inc. 3 course meal & drinks. Accommodation available (20 mins from Chester) Please call to book.  
Tel: 01244 350537 Freephone 0800 652 6942  
email: admin@thedinnerclubuk.com  
www.thedinnerclubuk.com

**DUTTONS MOWERWORLD**

Your Local Garden Machinery Specialist

**SALES • SERVICE • SPARES • HIRE**

Opening Times: Mon-Fri 8.30am-5pm Saturday 8.30am-1pm

**Tel: 01925 740217**

The Smithy, Chester Road, Daresbury, Warrington WA4 4AJ

**HONDA** [www.duttonsmowerworld.co.uk](http://www.duttonsmowerworld.co.uk) **HONDA**

**UNIPART**

**CAR CARE CENTRE**

**FREE Local Pick-up & Drop Off Service**

**AUTOSAFE**  
Quality Assured

## Agden Park Motors

Park Garage A56, Agden Brow, Lymm

**5 Star**  
workshop facilities  
for servicing and repair

**Over 300**  
tyres  
at competitive prices!

**MOT Testing**  
petrol & diesel

**BODYSHOP**  
01925 752235

**AIR**  
CONDITIONING  
REGAS/SERVICE

**BIG ENOUGH TO COPE . . . SMALL ENOUGH TO CARE!**

**Contact ALLAN or GEOFF on 01925 752447**



# Shop Local

Welcome to our special feature which is aimed at encouraging our readers to support local businesses. Any local business wishing to feature in future editions please contact us on 0800 955 5247. Please mention this publication when responding to an advertiser.

**elmas** ★★★★★ Award for Hygiene  
 MEDITERRANEAN CUISINE

**Tel: 01925 756049**  
 www.elmasrestaurant.co.uk 2 Pepper St, Lymm WA13 OJB

**We serve breakfast Sat & Sun 10am-12noon**  
**Lunch A La Carte and Set Menu 12noon-4pm**  
**Dinner from 6pm-10.30pm**  
 Daily Specials and Afternoon Teas



## Pestaway

**Wasp, Ant, Silverfish Rat, Mice & Squirrels Specialist**

**25 Years Experience**  
**All Work Guaranteed**

**Call Now On 07823 338 682 or 01925 755 702**

**Lymm Electric & Hardware**  
 EST 1974

**Electrical Goods**  
**Repairs • Rewires**  
**Alarms • Security Lights**

NICEIC approved electrical contractors

**Dyson/Vac repairs & Service**

*All work guaranteed*

**01925 755252**  
 12 Bridgewater Street, Lymm, Cheshire

**REEDHOUSE**



**Kennels & Cattery**

Refurbished kennels fully centrally heated/airconditioning  
 Please call and view anyday between 3pm and 5pm  
 Dog walking facility Large spacious cattery

**Visit our new website**  
**Please Call Alan or Alison on 0161 941 5699**  
 Gorsey Lane, Warburton www.reedhousekennels.co.uk

**Would you like the UK's best value domestic gas & electricity?**

**With our unique "Triple Value" guarantee we will:**

- 1) Guarantee our prices will always be cheaper than British Gas.
- 2) Guarantee our prices will always be cheaper than your regional electricity supplier.
- 3) Guarantee our prices will always remain competitive with the cheapest tariffs available from the "Big 6" suppliers.

- Easy to switch
- You keep the same pipes and meters
- No interruption to your supply
- You receive exactly the same gas and electricity
- No minimum contract

Call for a **FREE No Obligation Utility Audit**

For full details:  
**0800 955 5247**

**New Media Centre, Old Road, Warrington. WA4 1AT**




**Jamie Sharman of Lymm**

**Wood Burning Stoves**  
 Installation, fireplace design, inspection and annual service

**Tree Surgery & Landscaping**  
 Full range of services for your garden

5 Wilkfield, Rushgreen Road, Lymm, Cheshire  
 Mobile: 07753 760103 Home: 01925 751403  
 Email: jamiesharman@sky.com





All work carried out by trained and insured technicians.



# Rugby club wins top award

LYMM Rugby Club has been judged to be one of the leading clubs in the country by winning special regional recognition among clubs who have earned the Rugby Football Union's prestigious Seal of Approval award.

The Seal of Approval initiative, which ensures that players coming into the game benefit from the very best support systems that clubs can provide, acts as both a quality

kitemark and a barometer of the high standards of care young people can expect from a club.

But even within the clubs who reach the highest levels of administration and structure which the SoA template demands, there are clubs who have gone the extra yard in reaching the required standards and whose submissions stand out, even in an area where excellence is the norm.

Lymm RFC is just such a club and as a result has been voted Cheshire Constituent Body winner by the RFU Community Rugby department.

Andy Lees, the National Clubs Development Manager said: "Every club which achieves Seal of Approval status deserves a huge pat on the back for reaching the very high standards demanded by the process."

"The Whole Club Seal of Approval accreditation, which assesses every aspect of a club's

infrastructure and was introduced last year, is an even more challenging benchmark, but across the game clubs are signing up to both disciplines and putting in place procedures and programmes that deliver the highest levels of safety and support to anyone joining a rugby union club.

"The clubs we are acknowledging with these

National, Regional and Constituent Body Awards are the best of the best and I'm proud to say that in rugby union, we really are dealing with some exceptional groups of people.

"There is clearly such a group of dedicated, hard-working rugby folk at Lymm RFC and they deserve recognition for reaching the high standards in place at the club."

# Lymm pupil's England Grand Slam victory

LYMM High school pupil Mark Jennings is celebrating after a Grand Slam victory with England Rugby Union Under 18s.

There is double cause for celebration as Mark has now received confirmation that he is to be part of the England under 18 squad selected to go on tour to South Africa in July.

Mark's Grand Slam victory was his second England Cap, receiving his first when played for England under 16s last year.

England under 18 squad have now played a total of 18 consecutive international games without losing - a superb achievement.

Mark, who lives at the Golden Fleece in Lymm village centre is also a member of the successful Sale Sharks Academy and he hopes to go on and gain first team experience.

Mark said: "It has been a fantastic year playing with such a good England squad and management team."

"The highlight was to be selected to play against the Australia under 19 squad international game at Heywood Road."

"My ambition is to stay focused and committed and play for Sale Shark's first team and to qualify for next year's England under 18 team which takes place in France."



Mark Jennings on England duty

## Obituaries

### Tony Ackerley



THE funeral has taken place of motor mechanic Tony Ackerley, aged 45, of Lymm.

Tony ran his own garage in Oughtlington Lane and his hobbies included gardening and classic cars as well as camping holidays with his family.

He is survived by his wife, Dawn, son Andrew, mum and dad and brother.

The funeral service took place at Altrincham Crematorium and arrangements were by John Burrows and Sons of Lymm.

### Alan Thomason

THE funeral has taken place of Alan Thomason, aged 76, of Park Road, Broomedge, Lymm, who died recently in Warrington Hospital.

Mr Thomason was born and lived all his life in Lymm. He is survived by sons Steven and Andrew, daughters Mandy and Joann and five grandchildren and three great grandchildren.

Cremation took place at Dunham Crematorium.

Established 1878  
**John Burrows & Sons**  
 Independent Family  
**Funeral Directors**  
 M. G. Tandy  
 J. A. Tandy  
 16 Higher Lane, Lymm  
 Tel: 01925 752501

**The Venue**  
 Thirlmere Lodge, Rectory Lane, Lymm WA13 0AQ  
 Tel: 01925 756393 Open Every Night Mon-Sat!

- Live acoustic music most Thursdays -  
 - Our famous 'Open Mic' night every Tuesday -  
 - New Wine List -

Late Bar til 12pm - Thursday, Friday and Saturday  
 Available for private functions every afternoon and all day Sunday

Great selection of Wine and Draught Beers from around the world:  
**Black Sheep Carling Boddingtons**  
**Thatchers Cider Amstel Peroni Guinness**  
 Now serving Freshly Cooked Pizzas from Elmas Restaurant  
 Served Every Night

Happy Hour Mon - Fri 5-7pm

Wi-Fi Hotspot  
 Come along and get online for FREE

twentyfourseven  
 design and print ltd

**Special Offers**

- 500 Full Colour Digital Business Cards **£35.00**  
(Buy 1 set, Get 1 set free!)
- 100 A3 Full Colour Posters **£38.00**
- 500 A6 Full Colour Double Sided Flyers **£50.00**
- 10,000 A5 Full Colour Flyers **£248.00**  
(Pay for 1 side, Get the other printed for free!)
- 60' x 40' Full Colour Posters **£12.00**

t. 01925 240 247 e. info@247print.net

a. The New Media Centre, Old Road, Warrington, WA4 1AT



**CLASSIFIED**

**Call 0800 955 5247 to advertise**

**ACCOUNTANCY & BOOKKEEPING**

**APPLEGATE & CO** licensed and regulated by the AAT to engage in public practice in Accountancy, Book-keeping, Payroll, VAT, Self Assessment. **Tel: 01928 739966/07803 218343. 2 & 8 Collinson Court, Frodsham WA6 7PN.** (08/10)

**AIR CONDITIONING**

**AIR CONDITIONING SERVICES** Heating, cooling, dehumidifying, freshly filtered air, for homes, conservatories, retail outlets, offices, surgeries, salons. Installed in a day, 5 years guarantee, lease options, tax rebates, free survey. **Call John Duggan, 4 Seasons Ltd 01925 754444. www.4seasonsltd.co.uk** (06/10)

**BATHROOMS**

**The Bathroom Refurbishment Co.**  
We can create the Bathroom of your dreams  
One Warrington based Company  
One Job from start to finish  
Unique 3D virtual CAD design system  
Please visit our website  
www.bathroomrefurbishment.co.uk  
Please Ring Wayne  
**01925 826 828 or 07976 574 828** (07/10)

**LYMM KITCHEN & BATHROOM PROFESSIONAL INSTALLATION.** Ceramic wall & floor tiling. **For free estimates and advice contact Rob Evans on 01925 752623 business or 07763 770408 mobile.** Est 2002. Local references provided (19/10)

**BUILDING SERVICES**

**18TH CENTURY ENGLISH OAK BEAMS** and truss for sale. I can arrange transport. **Call Keith Lyon Mob 07860 329315 or 01925 763015.** (01/10)

**BRICKLAYER AVAILABLE** for garden walls, pointing etc. **Tel: 01925 755441 Mobile: 07966 491624** (01/10)

**Lymm Slate & Tile**

All aspects of Slating and Tiling  
Fascia, Soffits & Guttering

**DONT PAINT IT - REPLACE IT!**

**Tel: 01925 758863  
Mob: 07796 896845** (08/10)

**THELWALL BUILDING SERVICES,** extensions, internal alterations, brickwork, roofing, joinery, plastering, upvc windows and doors, soffits, fascias, guttering. All work guaranteed, 20 years experience. **For free quotes call Gary on 01925 266646 or 07808 169278** (08/10/10)

**CARPETS, CURTAINS & INTERIORS**

**BRIDGEWATER FLOORING AND BLINDS** we supply and fit carpets, vinyls, laminates, karndean, commercial flooring and tiles. Blinds-venetian, vertical, roller and roman. Outdoor awnings, curtains, upholstery, tracks, fabrics, poles and finishing touches showroom open at agden brow. Free measure quotation service. **Tel: 01925 755805. Closed Wednesdays.** (12/11)

**CARPETS, CURTAINS & INTERIORS**

**CUSTOM-MADE** curtains and loose covers. All accessories supplied and fitted. Made-to-measure blinds. Our fabric or yours. **Tel: Orchard Soft Furnishings 01925 756388.** (15/11)

**CARPET CLEANING**

**A1 STAINBUSTERS:** Fully guaranteed carpet and upholstery deep dry cleaning. Clean & dry in only ONE hour. Quotes for both commercial and domestic. Contact the Local expert **John Latham on 01925 205210 or 07765 314080** (010/10)  
**SIMPLY THE BEST CARPET CLEAN YOU WILL EVER** have. Cleaners UK Ltd. Est 22 yrs. Have your carpets & sofas beautifully deep cleaned leaving them fresh smelling & colour restored. Latest & best methods. Dry/steam. Professional, reliable & affordable. **Call Neil Riley on 01925 264989/07831 336060 www.cleaners-uk.net** (12/10)

**CENTRAL HEATING**

**CORGI REGISTERED GAS ENGINEER.** Andy Gas of Lymm, specialist in: Boiler upgrades, servicing, repairs to all domestic heating and gas appliances. Professional service. **Tel Andy on: 07753 838129 or 01925 753712.** (03/11)

**CHILDREN'S ACTIVITIES**

**TUMBLE TOTS** is the leading national physical play programme for children, classes available in Knutsford Hale & Bowden. We can be booked for private parties. **Contact Jane on 07812-144450. www.tumble tots.com/sale** (15/11)

**CLEANING SERVICES**

**arleys angels**  
• Spring Clean Specialists  
• Presenting your home for sale  
• Moving house  
• After building work cleans  
**01925 266834**  
because you're worth it! (07/10)

**SAFE CLEAN: SAFE ORGANIC CLEANING.** Specialists in cleaning all leather and fabric upholstery, rugs, carpets and curtains in situ. Ask about our new organic allergy relief system, Guardsman stain protection plans and carpet repairs. **Richard Vaal on 0808 144 8178** (010/11)

**SIMPLY THE BEST CARPET CLEAN YOU WILL EVER** have. Cleaners UK Ltd. Est 22 yrs. Have your carpets & sofas beautifully deep cleaned leaving them fresh smelling & colour restored. Latest & best methods. Dry/steam. Professional, reliable & affordable. **Call Neil Riley on 01925 264989/07831 336060 www.cleaners-uk.net** (12/10)

**COMPUTERS**

**Having Trouble With Your Computer?**  
Running too slow?  
Want to upgrade... go wireless?  
Call for experienced engineer  
**Tel: 07974 448 165 or 01925 751 546** (03/11)

**DELIVERY SERVICES**

**FURNITURE FERRY LIGHT REMOVALS.** Collections arranged from Ikea, Costco and other stores, garden centres, auctions etc. You choose, you buy, I deliver - SIMPLE. Reliable, inexpensive service. **Tel: Matt 07970 178 333 or 01942 732768. www.furnitureferry.co.uk** (05/11)  
**TnM Couriers** - specialists in urgent UK same day deliveries, international and UK next day services available, contract work undertaken, parcels to pallets, no job too small or too big, competitive rates. **Call 01925 639029.** (07/10)

**ELECTRICAL CONTRACTORS**

**ELECTEK ELECTRICAL SERVICES NICEIC PART P** Approved 17th Edition Electrician. Rewiring, fuse boards, additional sockets and lights, burglar alarms and security lights. Free estimates and advice. **Call John 01925 754241/07977 560015.** (08/10)

**PAUL A LEWIS ELECTRICIAN.** For extra sockets/lights, main board upgrades to full rewires, no job too large or small. No call out fee. All work guaranteed. **Tel 01925 758337 or 07966 386806.** Est 23 years. (06/10)

**TRUST PROPERTY ELECTRICAL SERVICES.** NICEIC Part P Approved Contractor. All Electrical work undertaken. Inspection & Testing & PAT Testing. All work certified & guaranteed. **Call Tim on 07754409906 or 01925 601055** (08/10)

**EQUESTRIAN**

**LYMM RIDING SCHOOL.** Learn to ride with friendly atmosphere, group lessons or private. Horses/ponies well schooled. Lessons from £10, we offer tests with pony club cert, please ring for more details. Training for pony club. **Rebecca Bennett Reg AI. 01925 750435. Mob 07778 866006.** (12/11)

**EQUESTRIAN SUPPLIES & ANIMAL FEEDS**

**STABLES SADDLERY.** EST. 1964. Good stock of all equestrian supplies and animal feeds. Lots of interesting and unusual equine and canine collectibles. **Tel: Barbara Williams on Lymm 752762.** (08/10)

**FIRES & FIRE SURROUNDS**

**Quality Fireplaces at Affordable Prices**  
**WARRINGTON FIRE SURROUNDS**  
Surround & Marble Only £299  
Quality Value Service Guaranteed  
**01925 417731**  
www.warrington-fires.co.uk  
8 Lovely Lane, Warrington (follow signs for hospital) (07/10)

**GARDENING SERVICES**

**A F GARDEN SERVICES**  
REGULAR MAINTENANCE  
TURFING, SOFT LANDSCAPING  
CLEARANCES, POWER WASHING  
HEDGE PRUNING  
**07796 818 686  
0161 928 1722**  
www.afgardenservices.co.uk (07/10)

**LYMM BASED**  
**Beechwood Industries Ltd**  
Does your garden need a complete makeover or just good management?  
Free Assessment  
Free Consultation  
Landscape Design  
Construction  
Planting  
Irrigation  
Pest Control  
Tree Surgery  
Garden Maintenance  
Contact Adam Halford on  
**07749 253 308**  
www.beechwoodindustries.co.uk (07/10)

**GG SERVICES**  
Tidy Ups  
Domestic/Commercial  
Garden Maintenance  
Please Ring  
**01925 759422  
07831 229354** (06/10)

**J C SLAVIN**  
Landscapes & Garden Maintenance  
Pruning • Garden Clearance • Fencing  
Flagging • Driveways • Landscaping Designs  
**01925 756 839**  
Mob: 07599 747 373 (08/11)

**JDS**  
LANDSCAPE & GENERAL BUILDING SERVICES  
Garden Design • Driveways • Patios  
Garden Walls • Fencing • Decking  
Planting • Turfing • Regular Maintenance  
Tel: 01925 754883 Mob: 07515 967735  
www.jdsrslate.com (10/10)

**LAWN DRAINAGE AND SOIL AERATION.** No trenches, no drainpipes, no digging, no repairs, no hassle. If this interests you **Contact Bob Harper 01925 266852 or 07952 608701.** (19/10)

**M J NEEDHAM LANDSCAPES** Award winning with over 15 years experience. All aspects of landscaping, specialist in bespoke construction. Qualified design service available. **Contact 01925 825 645 or 07888 730 383** (09/10)

**SIMPLY GARDENS CONSULTANCY** offers maintenance and design advice; maintenance schedules; planting plans; expert plant selection; on-site training. Regular or occasional maintenance can be arranged. **Call Graham on 01925 766873 or email gard.cott@btinternet.com** (13/11)

**GARDEN & PET MESHES**

**WE HOLD** large stocks of garden and pet meshes. Why pay garden centre and DIY prices. Trade enquiries welcome. **Wirecloth Sales & Development Ltd. 11A East View, Grappenhall, Warrington, Cheshire WA4 2QH. Telephone: 01925 268417. Email: wireclothsales@aol.com Web: www.wireclothsales.co.uk** (19/10)

**Would you like the UK's best value domestic gas & electricity?**  
With our unique "Triple Value" guarantee we will:  
1) Guarantee our prices will always be cheaper than British Gas.  
2) Guarantee our prices will always be cheaper than your regional electricity supplier.  
3) Guarantee our prices will always remain competitive with the cheapest tariffs available from the "Big 6" suppliers.  
• Easy to switch • No minimum contract  
• You keep the same pipes and meters  
• You receive exactly the same gas and electricity  
**THE UTILITY WAREHOUSE**  
For full details: **0800 955 5247**  
New Media Centre, Old Road, Warrington. WA4 1AT



**CLASSIFIED**

**Call 0800 955 5247 to advertise**

**GATES**

**Village Gates**  
**SPECIAL OFFERS NOW ON**  
 Manufacturers and installers of quality timber gates  
[villagegates.co.uk](http://villagegates.co.uk)  
 01925 766629 or  
 Mob 07588 707923  
 Church Lane, Coltsheath

**HANDYMAN**

**Handyman Services**  
 Home, Office & Garden  
 All Welding Repairs & Fabrication  
 Patio, Driveway Cleaning  
 General DIY, Gutter Cleaning & Repair  
 Garden work, Fitting & Fencing  
 Tiling & much more  
 Tel: 01925 757905 Mob: 07813 301850

**HAIR & BEAUTY**

**PROFESSIONAL MOBILE** hairstylist, creative cutting, colour/colour correction, including foiled highlights. Tel: Lorraine 01925 755441 / Mob 0786 7910805.

**HEALTH CARE**

**THE WHITE ROOMS PHYSIOTHERAPY** and Wellness Centre. Rapid expert assessment and treatment of all musculoskeletal injuries. Spinal Specialists! Discover and tackle the cause of your pain! 11, Henry Street, Lymm, Cheshire WA13-0LT. Tel: 01925 752333 Mob: 07903 822700.

**HYPNOTHERAPY**

**MICHAEL MAHONEY** clinical hypnotherapist for IBS, Stress, Anxiety and many other problems. Medical Research project experience, BUPA Service Provider. For **FREE information sheet please email** [TimelineServices@aol.com](mailto:TimelineServices@aol.com) or ring 01925-658322 [www.healthyaudio.com](http://www.healthyaudio.com)

**IRONING SERVICES**

**Carol's Ironing services**  
 NEXT DAY PICKUP & DELIVERY SERVICE  
 Lymm  
 Tel: 01925 767945  
 Mob: 07979 948197

**ITEMS WANTED**

**OLD GOLD & SECOND HAND JEWELLERY ALWAYS REQUIRED.** Branded watches considered. Best prices paid at Knutsford's busiest jewellers established 1980. John Rees Jewellers, 91 King Street, Knutsford 01565 653 009

**JEWELLERY**

**evans & co**  
 JEWELLERS & COLLECTORS  
**Jewellery Workshop**  
 39 London Rd, Stockton Heath, Warrington, WA4 6SG  
 Quality repair, remounting, design work and setting finished to a high standard.  
 Loose certificated diamonds and gemstones supplied.  
 Stockists of fine contemporary British Swiss and German jewellery.  
**Tel: 01925 269292**

**JOINERY**

**LYMM & DISTRICT JOINERY & CONSTRUCTION** Loft & Cellar conversions. Extensions and renovations. All aspects of joinery undertaken. Free estimates no obligation. T: 07867 973566. M: 01925 267611 W: [www.joinerywarrington.co.uk](http://www.joinerywarrington.co.uk)

**KITCHENS**

**LYMM KITCHEN & BATHROOM PROFESSIONAL INSTALLATION.** Ceramic wall & floor tiling. For free estimates and advice contact Rob Evans on 01925 752623 business or 07763 770408 mobile. Est 2002. Local references provided

**LOCKSMITH**

**CHESHIRE LOCKSMITHS LTD** UPVC Door Specialist. Non Destructive Entry Service. Free Quotations. Lymm Based Business. Contact Tony 07774 805 588.

**MINI BUS HIRE**

**TAURUS TRAVEL** 8 and 14 seat mini buses for all occasions including 24 hour airport transfers. Friendly and reliable service. Local and long distance. Fully seat belted. Jon: 07786 630675.

**MORTGAGES & HIPs**

**ORCHARD HIPs** are a local company based in Antrobus providing HIP's and EPC's at competitive rates. Quote Lymm Life Offer. 01606 891464. 07730 604131

**OPTICIANS**

**ADCOTT OPTICIANS.** State of the Art opticians in the heart of Lymm Village. Comprehensive sight tests and a wide choice of spectacles tailored to you, whatever your budget. 01925 757075

**PAINTING & DECORATING**

**ANTHONY MASON PAINTER AND DECORATOR** Over 25 years experience. Neat, clean, reliable service. All aspects including papering, paint finishes, colour advice, signs and furniture painting. Tel. Tony Mason: 07962532811.

**N & K DECORATING SERVICES,** High Class Professional Decorators, Paper Hanging Specialist, Internal and External works undertaken, Lymm Based Company, Free Quotations. Call 01925 759936 or 07783 068377.

**STRIP 4 U.** All walls, ceilings, Artex and woodwork professionally stripped. Quality painting and decorating service for interior/exterior. Fully insured clean and tidy. Call Carl for a FREE ESTIMATE on 01925 657469 / 07950 385904

**PAYROLL**

**WHY TRY TO BE A PAYE EXPERT?** Watkinson Black can provide a cost effective payroll service, releasing you to concentrate on your business. For further details please phone: 01925 413210 or e-mail: [info@warringtonaccountants.co.uk](mailto:info@warringtonaccountants.co.uk)

**PHOTOGRAPHER**

**BRENDA GREEN ABIPP.** Qualified professional photographer for People, Environmental Portraits, Weddings, PR, Special Occasions. Established 30 years. websites. [www.brenda-green.co.uk](http://www.brenda-green.co.uk) [www.brendagreen@demon.co.uk](mailto:www.brendagreen@demon.co.uk) Tel: 01925 753580.

**PICTURE FRAMING**

**EDGAR ART & FRAMING,** 19b The Cross Lymm. Picture framing, original art, jewellery, gifts and greetings cards. (Turn right at The Terrace Brasserie & Cafe and right again at the far end). Tel 01925 754700.

**PICTURE FRAMING SERVICE,** also original paintings, prints, and giftware. Giclee Printing Service for artists. The Brentwood Gallery, 106 - 108 London Road, Stockton Heath, Warrington WA4 5LE. Tel: 01925 601473 [www.brentwoodgallery.co.uk](http://www.brentwoodgallery.co.uk)

**PLASTERING**

**B.E.A. PLASTERING OF LYMM**  
 Full rooms plastered • Skimming  
 Bonding • Stud walls built  
 All repair work large or small  
 Tyroleaning/Rendering  
**10% DISCOUNT ON PRODUCTION OF ADVERT**  
 Call David anytime on 01925 753966 or 07786 245068  
[www.beaplastering.co.uk](http://www.beaplastering.co.uk)  
 Member of the Guild of Master Craftsmen

**PLASTERING**

**LYMM PLASTERING**  
 First Class Workmanship  
 Quality Time served Plasterers  
 All aspects of Plastering  
 K Rend coloured Render  
 Refurbs • New Builds  
 Re-skims • Tyrolean  
 Drylining  
 All Insurance Work  
 Fully Insured  
 Tel: Brian Gaffney  
 Office: 01925 755958  
 Mobile: 07967 087034

**PLUMBING**

**Professional Plumbing and Heating Service**  
 All aspects of plumbing & building maintenance from leaks, guttering, washing machines, central heating and full bathroom installations  
 Call Mike (resident) today for a FREE QUOTATION  
**T: 01925 740537**  
**M: 07821 695798**

**PB PLUMBING.** All domestic and commercial work. Fitted bathrooms and tiling. Small jobs welcome. Free quotes. Fully insured. C&G qualified. Gas Safe Registered Call 0161 928 3253 or 07821 554867 or Freephone 0800 824 7747 or visit [www.pbplumbing.co.uk](http://www.pbplumbing.co.uk)

**STEPHEN ROBERTS**  
 Plumbing and heating, installations and servicing, boiler breakdowns, system upgrades, free estimates  
**CORGI REGISTERED**  
 Tel: 07830 331231

**Plumbflow Ltd**  
 Plumbing and Heating Services  
 from leaks, dishwashers & showers fitted, to full bathroom installations  
 Call today for a FREE QUOTATION  
**01925 468003**  
[www.plumbflow.com](http://www.plumbflow.com)

**PROPERTY MAINTENANCE**

**ADVANTAGE PROPERTY SERVICES LTD** domestic installation and maintenance work including bathrooms, kitchens, tiling, flooring, painting and decorating, plumbing etc. Contact Michael Speakman on 0161 973 6723 or 07760 781389

**RE-UPHOLSTERY**

**TRADITIONAL** and modern re-upholstery. Dining chairs, headboards, 3-piece suites etc. Customer's own fabric welcome. Tel: Orchard Soft Furnishings 756388.

**ROOFING**

**J & S ROOFING.** Roofing repairs & complete replacement. Built up flat roofing, Slating, Tiling, Fascias, soffits and gutting Free quotes, references available. Tel: 0781 488 0246 & 0788 639 0444.

**TAXI / PRIVATE HIRE SERVICE**

**Frazer's of Lymm**  
 Private Hire Service • Good local rates  
 Reliable friendly service • up to five seater  
 Airport • Station Schools • Business or pleasure for OAPs  
**Contact Nigel on 01925 754426 or Mob 07812 674822**  
**HORN'S**  
 Airport Transfer Specialists  
 Stations, Airports, Nights Out 4 & 7 seaters  
 Prompt and reliable service  
**LYMM 751761 or 07881 786250**

**LARRY'S CARS.** Airport transfers and private hire. All UK airports covered. Over 10 years experience in the Lymm area. Call 01925 755060. Mob 07989 342179

**Silverfox Private Hire**  
 Black, discreet 5-seat Chrysler Voyager for all occasions: Airport Transfers, Corporate Travel, Contract Work.  
**Any destination. Professional, reliable service Tel: 07964 194150**

**TREE SURGERY**

**APPLETON TREE SERVICES.** Felling, pruning, difficult locations catered for, free estimates. Email [daveappleton@aol.com](mailto:daveappleton@aol.com) Tel David 079 099 876 21.

**R&R TREE SERVICES.** All aspects of tree work undertaken. Pruning, felling and hedge cutting. All work fully insured. Tel Richard on 07792756545 or 01925 750418

**TUTORS**

**CHESHIRE TUTORIALS** offers tuition. Primary to 'A' level. Tutors especially primary maths, science and English welcome. Tel: 01925 758296.

**FRENCH OR SPANISH TUITION** for conversation, exam preparation or business. Learn a new language, improve your language skills or prepare for your GCSE or 'A' Level exams. Contact: Suzanne on 01925 759597 or 07790 965250.

**TV - SATELLITE**

**AERIALS 2000** of Lymm. No job too small. All work guaranteed. Aerials and satellites supplied and fitted. Sky subscriptions available. OAP reductions. Sky Digital / On Digital. 7 days a week. Tel: 01925 753427. Mobile: 07712 632315.

**WINDOWS & GLAZING**

**NEIL COPELAND WINDOWS & Conservatories Ltd.** Specialist in uPVC double glazing windows, doors, porches, conservatories, also fascias and guttering. FENSA registered. All work guaranteed. Tel: 01925 756138 / 07961 361550.

**SP GLAZING** for all your glazing requirements, double glazed units including failed and misted units, broken windows, mirror fixing. Kite marked to B/S. Time served glazier with over 30 years experience. For a friendly no obligation quote tel Sam Pendlebury on 01942 671859. Mob 07919 660296.

**MOTORING SERVICES**

**PARKVIEW CAR SALES**  
**We buy and sell QUALITY CARS**  
**Best price paid**  
**Telephone Peter on 01925 575737 / 07957 545479**  
 23 Podgate Lane  
 Podgate, Warrington  
 Cheshire, WA1 3RS



# Banner & Co

Independent Residential Sales and Letting Agent



## PROPERTIES ARE MOVING!

Let us show you how we sell / rent our properties.

- As a privately owned company we have the ultimate incentive to sell/rent your property for as much as possible in the best possible timescale
- Open 7 days a week, accompanied viewings including late nights
- Advertising both locally, nationally and via the web
- Free rental guarantee

## JOIN IN OUR SUCCESS

If you are considering moving now or in the future, or would simply like some advice regarding your property please contact Linda or Andy



01925 753636  
[www.bannerandco.com](http://www.bannerandco.com)

Please note that if you have already instructed another agent, we would advise you to check any agreement you may have to ensure you are not liable for more than one commission by instructing us as your agent

