

**Lymm**

# Life

**FREE EVERY MONTH**

July 2011

Issue: 148

  
**Lymm**  
.com

Take a look!

**Banner** & Co

Independent Residential Sales  
and Letting Agents

See our main advert  
on the back page  
for details

01925 753636

**SPECIAL OFFER**

Free Initial Consultation  
and Tooth Whitening with



[www.gavinismydentist.com](http://www.gavinismydentist.com)

Cosmetology | Dental Solutions

T: 01925 75 65 65

**Slimming World**

the club  
with the  
big heart!

**TUESDAY**  
Lymm Youth &  
Community Centre  
9.30am and 7pm  
Tel: Vikki O'Donnell  
07843 260612  
0844 897 0000

**SAVE  
£5**



**need family  
law advice?**

call your local  
legal experts

free legal clinic  
mondays 5pm-7pm

  
farnhams  
lawyers  
redgwyll  
llc

01925 604713  
[www.f&llegal.co.uk](http://www.f&llegal.co.uk)



Approved by Lymm Parish  
Council as the official  
magazine for Lymm

## May Queen special

Centre pages

**Regular news updates at [www.lymm.life.co.uk](http://www.lymm.life.co.uk)**



**Editor**

Gary Skentelbery

**Production**

Paul Walker

**Business Manager**

Tony Record

**Advertising**Freephone  
0800 955 5247**Editorial**

01925 623630

**Email**

info@lymmmlife.co.uk

**Websites**www.culchethlife.com  
www.frodshamlife.co.uk  
www.lymmmlife.co.uk  
www.warrington.tv  
www.warrington-  
worldwide.co.uk**Address**New Media Centre  
Old Road Warrington  
WA4 1AT*Lymm Life is published monthly  
by Orbit News Ltd.**The contents of this magazine  
are fully protected by copyright  
and nothing may be reprinted  
or reproduced without prior  
permission of the publishers.**The publishers are not liable for  
any statement made or opinion  
expressed by third parties in this  
publication.**Printed by TwentyFourSeven*

# Editor's Comment



## WALKING through the village during the annual Lymm May Queen Festival I couldn't help but feel the watching crowds have dwindled somewhat.

A decade ago there was little space on the pavements in the village centre.

Early morning showers and the threat of rain may have deterred a few people from turning out and while those who put the effort in to take part in the parade clearly enjoyed themselves - it was disappointing that more people didn't line the streets to cheer them on - and more importantly put money into the collecting tins to support our local charities and community groups.

I realise there are far more

distractions/attractions for people these days - but events like Lymm May Queen are vitally important to help maintain our unique community identity.

### Support

With Lymm Festival now looming on the horizon I would urge villagers to support as many events as you can.

The amount of volunteer hours that go into organising events like Lymm May Queen, Lymm Festival and the

Dickensian Festival run into the hundreds if not thousands with all year round planning.

They also provide a much needed boost to many of the traders in the village centre.

Meanwhile I have heard that Sainsburys will shortly be moving into the village to replace the existing Spar.

Hopefully this well respected national brand can provide a much needed boost to trade in the village centre while at the same time embracing the various community events?

**Have you got a story? Send your news items and pictures to  
info@lymmmlife.co.uk or phone 01925 623630**

## R + N STANHOPE

### Coal and Log Supplies

Best Quality Coal  
Smokeless Fuel  
Logs Supplied in Bags and Bulk  
Peat Bricks

**Open 7 Days**

**Broomeage Farm  
Burford Lane, Lymm WA13 0SE**

**Tel/Fax: 752830**



**Reflexology - Acupuncture**  
**Herbal Medicine - Bowen Technique**  
**Hypnotherapy - Physiotherapy**  
**Osteopathy - Homeopathy**  
**Colonic Hydrotherapy - Counselling**  
**Psychosexual Therapy - Chiropody**  
**MLD - Massage**

Please call to find out more  
Tel: 01925 730123

www.cheshirenaturalhealth.co.uk  
Cheshire Natural Health, Beehive House, Tarporley Road, Stretton, Warrington



**CHERRY & GRIFFITHS**

SUPPORTING YOU ALL THE WAY

**Cherry and Griffiths**  
**08448 223 623**  
CLAIM CONSULTANTS & INSURANCE LOSS ASSESSORS

**Household buildings  
& contents**

**Commercial buildings,  
machinery & stock**

**Business interruption**

**High net worth**

**Antiques and fine art**

FLOOD | FIRE | THEFT | STORM DAMAGE

PEACE OF MIND  
FOR THE POLICY HOLDER  
www.cherryandgriffiths.co.uk

## Reduce the stress of your insurance claim

An expert claim consultant can take the hassle out of your insurance claim, guaranteeing the best possible outcome without spending hours on the phone or getting involved in disputes.

Would you go to court without a solicitor? Would you buy a house without the help of an estate agent? Most people, knowing the potential legal issues that they could face, would not. Yet, when in the unfortunate circumstance of having to claim on their insurance, the majority of people still attempt to fight the battle themselves, unaware that they could have expert assistance from experienced claim consultants and insurance loss assessors, Cherry and Griffiths.

Insurance companies are notoriously difficult to deal with but the directors of Cherry and Griffiths have a combined claims handling experience of almost 150 years, with offices in Burnley, Preston and Manchester.

You won't have to get involved in disputes. You won't be passed from pillar to post. Cherry and Griffiths will do it all for you while being on hand at all times to offer you support. By remaining in control of your claim, Cherry and Griffiths aim to avoid time

consuming disputes with insurance companies unless absolutely necessary, using industry know-how to negotiate the best possible settlement for your situation in the quickest time possible.

Cherry and Griffiths have a

strong portfolio of clients in the North West and beyond, who appreciate the personal approach and comprehensive services that they offer. Your situation has already caused you a lot of stress, so why not let Cherry and Griffiths take the hassle out of your claim.



**We offer a free  
no-obligation consultation.  
Call us to find out more about  
how we can help you.  
08448 223 623**



# Festival brings London to Lymm!

**A 'CRAZY arts project' will be bringing London to Lymm as part of the Lymm Festival.**

Residents will see London landmark signs appearing across the village - showing that the main tourist attractions of London actually fit into an area no bigger than Lymm.

The concept is the idea of local designer and artist Richard Cowley (pictured below) who lives on Higher Lane.

Richard explained: "It all started



over a glass of wine, when I reckoned that the main touristy bit of London from Hyde Park to Tower Bridge was probably the same size as walking from the Barn Owl pub along the canal to the M6, roughly the size of 'greater' Lymm."

Sure enough when overlaid on top, the centre of London is curiously similar to the size of Lymm. Astonished by this, Richard wondered how this concept could be shown to Lymm-ites.

His observation has now led to the Lymm-London art project, and for two weeks during the art festival the placement of geographic location signs around the village including 'Buckingham Palace', 'Piccadilly Circus', 'Bank of England' will demonstrate actually how small London can be perceived, and that the nature of spaces, their scale and perception is defined by their environments.

### Bigger

Being the art festival, it was thought that Lymm Village centre should be aligned with the National Gallery, which is actually bigger than the village centre.

Richard added: "The aim of the project is just to explore the geographic curiosity that if we ever had to move the exciting bit of London, it could well find a home up north (subject to planning). So next time you take your dog for a walk or



go for a jog and see a sign for 'Hyde Park' and after a while 'Tower Bridge' just remember that although Great London really isn't that big a place!"

The map installation of Lymm-London will be on show at 'Art in the Garden' or visit [www.lymm-london.co.uk](http://www.lymm-london.co.uk) for more information.

## Sophies Soft Furnishings

Curtains • Roman Blinds  
Cushions • Tiebacks • Poles  
Tracks • Valances • Pelmetts

We design, make and fit to meet your exact requirements.

For free home visit or advice ring **Anne on 01925 754446**

[www.sophiessoftfurnishings.co.uk](http://www.sophiessoftfurnishings.co.uk)

## Whites Sports Warrington Market

1901 - 2001 - 100 YEARS OF EXCELLENCE

*Specialists in:*  
Darts, Bowls, Snooker, Air Guns, Walking Sticks, Warrington Town Merchandise, Rugby, Cricket, Football

**GIFT VOUCHERS AVAILABLE**

Telephone/Fax:  
**01925 631531**

## The UK's No.1 Lawn Care Company

- Scarification
- Aeration
- Lawn Fertilising
- Weed Control
- Moss Control
- Water Conserver
- Pest and Disease Management

from as little as **£15**

### Call in the professionals!

GreenThumb's annual treatments ensure your lawn looks lush, green and healthy. With prices starting from £15 per treatment, your lawn nightmare will soon be history.

Call your local branch today for a FREE lawn analysis and no obligation quote on:

**01925 210669**

Find us online at: [www.greenthumb.co.uk](http://www.greenthumb.co.uk)

## Rosebank Naturegarten, Pepper St, Lymm

a dream come true for you and your child.

- Home from home
- Extensive grounds
- Outside learning days
- Early Years/flexible sessions
- Full Day Care
- Children from 2½ years

Did you always want to build dens, explore, do woodwork and gardening?  
...make sure your child has a head start and a childhood to sing about with a setting that gives them real space to develop, learn and play.

Our new Scandinavian Log Cabin is the natural choice for your child with its custom design and outside areas. Most of all we really do cater for children's individual needs with all play being led or directed by qualified teachers.

*'The diverse curriculum offers opportunities for children to develop their skills and find their strengths' (OFSTED)*

**Up to 15 hours per week may be FREE using Early Education Grants for 3 and 4 year olds.**

We can also take babies and toddlers at The Rosebank Centre, our other Pepper Street nursery, which focuses on their specific needs.

Phone Sadie Hopley on 758959 to come and explore





**July 12**  
**LYMM PARISH COUNCIL**  
Lymm Parish Hall, 7.30pm

**July 13**  
**THE CHRISTIE TWILIGHT WALK**  
Lymm High School 6pm onwards.  
Family fun evening. Games, hog roast & bar.  
Tickets from school shop and Rushgreen  
Garage. £10 adult £5 child/student inc.  
donation to Christie's.

**LYMM LIONS GROUP**  
Meet: Bridgewater Club, Lymm  
1st and 3rd Tuesdays of the month. 8pm  
Contact: 0845 833 5729

**LYMM THURSDAY EVENING BRIDGE CLUB**  
Lymm Village Hall every Thursday 7pm

**MAPLE LODGE ART GROUP**  
Meet each Wednesday 9.30am - 12.30pm  
Maple Lodge Guide HQ, Pepper St, Lymm  
Details: 01925 755126

**ROTARY CLUB OF LYMM**  
Meet every Wednesday at Statham Lodge Hotel  
7.15pm for 7.30pm  
Contact the secretary 01925 650189

**LOVING HANDS**  
Knitting for charity at Lymm Methodist Church,  
2nd and 4th Thursday each month.  
1.30pm - 3pm. Details: 01925 823614.

**MARKET LUNCHES**  
Eagle Brow Methodist Church  
3rd Thursday in the month  
Light lunches 12 noon till 2pm. All proceeds to  
Age UK and YMCA Room at The Inn

**LYMM SCOTTISH COUNTRY DANCE CLUB**  
St Mary's Church Hall  
Second and fourth Fridays (Sept - May)  
7.30pm  
Details: 753853

**LYMM BAPTIST CHURCH DROP-LUNCH**  
Higher Lane. Mondays (during term time).  
12 noon to 1.15pm. £2.50

**LYMM JUBILEE GARDENING CLUB**  
Meet Third Wednesday of the month  
Lymm Baptist Church, Higher Lane. 7.30pm  
Visitors welcome. £2 includes tea and cake

**LYMM FLORAL ART GROUP**  
Lymm Village Hall  
Third Monday of the month (except August)  
at 7.30pm

**LYMM ORNITHOLOGY GROUP**  
Lymm Village Hall, 7.45pm for 8pm,  
Last Friday in the month (ex June & July).  
Guest speaker, Slide Show, Refreshments.  
Visitors welcome. First visit FREE.  
Also field trips. Details: lymmog.co.uk

## Summer lunch

AN afternoon of fun is planned when Warburton Village Committee holds a Summer Lunch at Oughtrington Community Centre on Sunday July 17.

Lunch will be served from 1pm and entertainment will continue until 4pm. Father Michael Burgess, Rector of Oughtrington, will entertain guests with humorous stories and rhymes. Everyone is invited to the lunch and funds raised will go towards the costs of the annual senior citizen's outing.

Soft and hot drinks will be on sale, but those who want alcoholic drinks should take their own. Vegetarian meals are available if booked. There will be a raffle with star prize of a hamper.

Further details are available from Sheila Bloor on 01925 756699 or Jenny Morton on 01925 757648.

## Raise a glass - to raise money

VILLAGERS in Lymm will be able to "raise a glass" as they raise money at the inaugural Lymm Beer Festival on September 9 and 10.

Lymm and District Round Table is adding the event to its already busy fundraising calendar.

It will be at Lymm Village Hall and the group is looking for sponsors for more than 20 beers and ciders that will be on sale.

Barrel sponsorship is £75 and sponsors names will appear in the programme, on the barrels and the festival's website. They will also receive 10 tickets to the event - including two VIPs who will be invited to attend a special event on the Friday evening with the chance to meet local dignitaries and enjoy free beer.

The group is also looking for a main sponsor, who will feature on the programme cover and glasses.

Table chairman Chris Stephens said: "We have a great track record in arranging popular community events such as the Lymm Duck Race and Big Lymm Bonfire, and we feel that the Lymm Beer Festival will be a worthy addition."

"All the profits will go to local charities and good causes so it's going to be a worthwhile event to support."

Further details are available from [www.lymmroundtable.co.uk](http://www.lymmroundtable.co.uk) or by contacting Chris on 07932 573 956.

**TAEKWON-DO**  
at Lymm Leisure Centre  
New Beginners Classes  
Children & Adults  
All grades welcome  
From 3:30 - 4:30pm

Call  
**07525 340284**  
[www.taekwondo123.com](http://www.taekwondo123.com)  
[taekwondo-news@hotmail.co.uk](mailto:taekwondo-news@hotmail.co.uk)

**CORDON VERT SCHOOL**

The Vegetarian Society's own cookery school has an unrivalled reputation for excellence in vegetarian cuisine.

**10% discount for all readers**  
Simply call and quote ref: G/CV/07/11  
Offer ends 31/12/2011 - subject to availability and Terms and Conditions.

[www.cordonvert.co.uk](http://www.cordonvert.co.uk)  
contact Andy on 0161 925 2014 or  
[andy@vegsoc.org](mailto:andy@vegsoc.org)

Dunham Road, Altrincham, Cheshire, WA14 4DG.  
Registered Charity No 259358.

**LYMM PARISH COUNCIL**

Lymm Parish Council meeting  
July 12, 7.30pm

To appear on the What's On page please contact Lymm Life on 01925 623630

The Complete Kitchen & Bathroom Service

## Village Designs

We design and install all types of kitchens and bathrooms. Our comprehensive service includes all trades:

Lighting • Tiling • Flooring • Decorating etc

**One local company from start to finish**

Visit: [www.villagedesigns.co.uk](http://www.villagedesigns.co.uk) or  
Ring Jeremy on 07810 421243

Kids Planet - Beamont  
O'Leary Street  
Warrington  
Cheshire  
WA2 7RQ  
01925 630 879  
Open 07:30 - 18:00

Kids Planet - Warrington  
Ebenezer Chapel  
Ebenezer Place  
Leigh Street, Warrington  
Cheshire WA1 1UL  
01925 417 350  
Open 07:00 - 19:00

... A WORLD OF DIFFERENCE

We offer the world as seen through the eyes of a child.  
We give the highest standard of day care and education creating a unique home for home for our children.

Kids Planet - Lymm  
29 Eagle Brow  
Lymm  
Cheshire  
WA13 0NA  
01925 759 220  
Open 07:00 - 19:00

Kids Planet - Widnes  
Kingway Learning Centre  
Victoria Road  
Widnes  
Cheshire WA8 7QY  
0151 257 7079  
Open 07:30 - 18:00

- Flexible opening times
- Experienced and enthusiastic staff
- Ultra secure environment with CCTV
- Healthy nutritious menu
- Indoor and Outdoor play areas
- Excellent Ofsted Reports

[www.kidsplanetdaynurseries.co.uk](http://www.kidsplanetdaynurseries.co.uk)

## Abbey Leys Farm Shop

*Fresh Farm Food at its Best!*

Organic Free Range Eggs • Goose and Duck Eggs • Pickled Eggs  
Home Grown Potatoes • Fresh Fruit and Vegetables  
Farmhouse Cheshire Cheese • Butter • Fresh Milk  
Farmhouse Ice Cream and Lemon Cheese

Opening Times: 9.00am - 5.30pm Mon - Sat. Sun 10.00am - 4.00pm

**ABBAY LEYS FARMERS' MARKET**  
First Sunday each month 10am - 2pm

**Tim & Janet Harrison**  
**753465**  
Peacock Lane, High Legh

rated #1  
full service digital  
design agency in  
warrington\*

**CARPE DIEM**  
WEB // DESIGN // VIDEO // + MORE  
+44 (0)1925 299 842 [www.carpe-diem.co.uk](http://www.carpe-diem.co.uk)

**RAR+ TOP 100 AGENCY 2010**



# Your local divorce lawyers...here to back your corner!

When relationships end it can be heart breaking for everyone involved. You often don't know who to turn to or what you are supposed to do next. At a time when you need advice and support the most, BPS will be there to provide solid legal advice and guidance through this difficult time in your life. With a friendly approach but equally robust handling of your case BPS will be at your side all the way.

Betesh Partnership Solicitors family team have expanded their City Centre practice to Hale village. BPS established a family law team in 1948 and their lawyers have built a strong reputation for their robust approach and distinguished results.

Caroline Payne who is located in the Hale office says, "We opened our Hale office in January 2011 and I am very pleased with the response we have had at such an early stage. We offer a defined client-focused service which has been received very well by our clients in Cheshire. We make ourselves available to clients outside working hours and this truly does have an impact on the superior results we achieve. We want to be available to our clients whenever they need our support and guidance because we want our service to be second to none".

"The range of funding options we offer to clients have also been well received and many clients are surprised to learn that a legal firm is willing to work in this way. We offer funding arrangements to clients and will agree to receive payment at the end of a case. In my experience this goes a long way

to alleviating the additional worry of having to pay for the divorce while dealing with all of the other emotional effects of separation."

"We are also highly experienced in dealing with children matters. Separation with children involved can be heart breaking to not only the parents but the extended family also. Whilst children matters must be handled sensitively and with a degree of tenderness it is also important for parents to know and exercise their rights for the benefit of their children. This is also true for grandparents as we are about to see a change in

grandparents legal rights".

"We have dealt with the most complex children matters, handling cases involving contact and residence disputes between both parents and grandparents. We have a number of international clients and have ongoing cases involving children who have been taken overseas and parents wishing see their children who are now living in the UK".

"I understand that the thought of divorce is daunting and that legal matters surrounding your children are emotional. This is why I also offer a free legal clinic to anyone who requires advice regarding initiating proceedings or you just want reassurance on your position in a family matter. The Family Legal Clinics are held every Wednesday from 5pm by appointment at our Hale Office. Please contact me for more information".

"Our aim is to always provide a distinguished legal service combined with the understanding and flexibility needed to ensure the best possible outcome for our clients".



*"Caroline has exceeded all of my expectations...not only a formidable lawyer but a pillar of support"*

*"Caroline's knowledge of family law is remarkable hence her reputation. The service she offers is outstanding. Caroline could not come any more highly recommended"*

**Divorce | Financial Settlements | Separation**

**Pre-Nuptial Agreements | Injunctions**

**Child Contact | Child Maintenance | Child Abduction**

Hale Branch: 3A CECIL ROAD, HALE, ALTRINCHAM, CHESHIRE, WA15 9NY

TEL: 0161 926 1430 | DX: 14305 MANCHESTER 1

E: caroline.payne@bpslaw.co.uk | W: www.bpslaw.co.uk

**BPS**

BETESH  
PARTNERSHIP  
SOLICITORS

Established 1948



# Bike ride raised £660



FOURTEEN riders took part in the annual bike ride organised by Lymm and District Royal British Legion - and between them raised £660.

The 18-mile ride from Lymm to Knutsford and back was started from the Pepper Street car park by Cllr David Openshaw, chairman of Lymm Parish Council. All proceeds to the Poppy Appeal.

## Diane's 'life change' is like being on holiday

HOSPITAL receptionist and former dental nurse Diane Harrison felt the need for a life change.

She applied to the National Trust to manage one of their properties - and was over the moon when she was offered a picture-postcard cottage almost on her doorstep.

The White Cottage, in Park Lane, Little Bollington, became home for Diane and husband Keith - with part of the deal that during the summer months they had to act as guides for people who wanted to visit the rare 16th century cruk framed Grade 2 listed building.

### Dream

But Diane had always had a dream of running a tea room from home - and was soon putting the idea to the Trust.

They agreed - and now an old barn just a couple of feet from the kitchen door has become the charming White Cottage Tea Rooms with seating for 22.

Diane is busy in the kitchen turning out delicious home made cakes and scones, cream teas, soups and rolls, tea coffee, milk shakes and hot

chocolate. She has taken on local girl Rachel Kinder as her assistant and also employs two Saturday girls.

She said: "We are fortunate to be on a popular walkers' route, near the Swan with Two Nicks pub. We get plenty of passing trade - particularly from people walking to Dunham Massey Hall.

"People say it is like being on their holidays and it is certainly an idyllic spot."

There are pictures on the wall by local artist Anne Earnshaw, a patio for eating out on fine days - and all that history all around.



**White Cottage Tea Room**

Home-made cakes, and cream teas, all served in a traditional cottage setting.

Open Thursday - Sunday  
11am - 4pm

Small private parties

Telephone: 0161 941 1695  
Park Lane, Little Bollington, WA14 4TJ

**For ALL your plumbing requirements**

**ROBERT KETTLE**  
**PLUMBING & HEATING SERVICES**

For a fast, local service  
No job too small • Competitive rates  
Free estimates • Senior citizens discounts

**Home: 01925 756685**  
**Mobile: 07789514087**



**Bramble Lodge Day Nursery**

Birth - 5 years

Good quality childcare and education in a homely environment.

Next to Lymm High School

[www.bramblelodge.co.uk](http://www.bramblelodge.co.uk)

**01925 757597**  
36 Oughtrington Lane • Lymm

**BYTEWYSE COMPUTERS LTD**  
THE SMARTEST CHOICE FOR SYSTEMS & SUPPORT

- Custom built PCs to meet all requirements
- Full Windows 7 supply and support
- Free home delivery and installation with up to 24 months warranty
- PC repairs and maintenance
- Remote Access Support
- Networking and PC support contracts for small or home businesses
- Call us now on 01925 711338

[www.bytewysecomputers.com](http://www.bytewysecomputers.com)

**WE HAVE MOVED**  
9 Webster Court, Westbrook Crescent, Gerrards Business Park, Warrington, WAS 6WD



**Thelwall Upholstery**

**FOR THE MOST COMPETITIVE RATES IN THE AREA**  
49 Knutsford Road, Grappenhall WA4 2NR  
Call Sean on: 01925 604770 or mobile: 07799 228080

*For all your upholstery needs*

**SPECIALISTS IN:**

- Re-filling Cushions • Re-springing • Full Re-upholster
- Dining Furniture • Headboards

A wide range of sample books to choose from  
All at competitive rates

PHONE FOR YOUR FREE ESTIMATES




**orbis Building Contractors**

Call now for a free survey

- New Builds
- Extensions
- Garage Conversions
- Roofing

All of our project trades people are fully qualified and comprehensively insured for all works carried out and are fully conversant with Health and Safety regulations

Projects are fully managed and whatever your needs, our highly trained professionals will ensure that all work is carried out efficiently and stress free

We work exclusively in the North West

We also specialise in Building Insurance Claims

Tel: 07412 077107 | Tanyard Farm, 80 Rushgreen Road, Lymm  
[www.buildinginsurancerepairs.co.uk](http://www.buildinginsurancerepairs.co.uk) | [info@buildinginsurancerepairs.co.uk](mailto:info@buildinginsurancerepairs.co.uk)

# Welcome to a proper bank



At Handelsbanken relationship banking still lives up to its name. With all key decisions made locally by us at the branch we are able to offer a highly personal banking service that is designed to meet your individual requirements.

We provide all the main services that high street banks provide, from day-to-day transactional banking, to the more sophisticated needs of the modern business. Our Individual Banking service is designed for high net worth customers who need a bespoke

offering with easy access to their manager. Putting the needs of the customer ahead of all else lies at the heart of everything we do. We tailor our current accounts, mortgages and loans to your individual requirements.

**Chris Clarke**  
**Karen McComb**

**Corporate Account Manager - Tel: 01925 575706**  
**Individual Banking Manager - Tel: 01925 575708**

1st Floor, 760 Mandarin Court  
Centre Park, Warrington, WA1 1GG  
[www.handelsbanken.co.uk/warrington](http://www.handelsbanken.co.uk/warrington)

## Handelsbanken





## The Jazz singer!

WHEN Lymm resident Alan Williams set off to France on a one week jazz course four years ago he was aiming to learn to play the saxophone.

Instead he came back as a singer! Alan (pictured left) explains. "One of the course tutors was the fabulous Liane Carroll who has twice been named BBC jazz singer of the year.

"During the evening jam sessions I sang a couple of times and Liane was very encouraging".

That Autumn, Liane appeared at the Cinnamon Club and pulled Alan from the audience to sing and play to a packed room. Since then Alan has regularly supported top acts including Barb Jungr, Ian Shaw and of course Liane. Later this year Alan gets his first headline gig at the Bowdon club that in recent years has featured great names like Paul Jones, Stacey Kent and Cleo Laine. Alan will be appearing at this year's Lymm festival in a gig called "Fire and Rain" on June 24 paying tribute to some of the great singer songwriters.

The gig will also showcase the talents of local singers Helen Monks and Rachel Donnelly who feature regularly at the venue plus some great local musicians including the sax of Michael Healey.

"Not quite the retirement I had in mind" says Alan who packed in work just a few weeks ago "but a lot more fun than moving the lawn".

## New convenience store for village

NEWS that Sainsbury's will be taking over the Spar in Lymm village centre has been welcomed by members of the Traders Association.

A spokesman for the company told traders at their monthly meeting that all existing staff will be keeping their jobs.

Although full details of the takeover were still to be finalised as *Lymm Life* went to press, it is understood that the Spar will close at the end of June or the first week of July - and will re-open as a Sainsbury's Local sometime in August.

The store is being completely cleared prior to the takeover.

The spokesman stressed that the store will be a convenience store - not a supermarket.

Traders are hopeful that the Sainsbury's brand will attract more shoppers into the village centre.

## Parish grants top £30k

LYMM Parish Council has handed out grants totalling £33,680 during the last 12 months.

This includes £19,200 to Oughtlington Community Association with £13,850 for roof repairs.

Other notable grants include £9,000 to Lymm CAB, £4,400 third party match funding for Lymm Scouts, £4,000 for Lymm Festivities Group, £3,000 each for Lymm Dickensian and Lymm Festival, £2,000 to Lymm May Queen, £1,500 for Lymm Duck Race road closures, £1,200 to Lymm Twin Society and £1,230 for event insurance.

## Released without charge!

A MAN arrested on suspicion of a number of distraction burglaries at shops in the village centre has been released without charge!

Money and charity boxes have been stolen from at least four premises in the village and although a man was arrested after fitting the description of the culprit, the Crown Prosecution Service have decided there is not enough evidence to convict.

Police have warned traders to be on their guard against distraction thefts.

Any one seeing anything suspicious is urged to contact the police on their non-emergency number 0845 458 0000 to report any future incidents or concerns.

Traders are also going to set up their own system to alert each other of crimes in the village.

## BOOTH'S Plumbing & Heating Services

All aspects of domestic plumbing & heating work carried out including:

- Bathroom suite/WC/Shower/En Suite/ Installation
  - Wet Rooms & Disabled Fittings
- Central Heating Systems and Radiators
- Bursts, Dripping Taps & Overflow Pipes
- Garden Taps, Gutters & Blocked Drains
  - 24 hr Call Out

**NO JOB TOO BIG OR SMALL**

**For a Professional & Reliable Service Call**

**07773 715 257**

**www.boothsphs.co.uk**  
**info@boothsphs.co.uk**

## B.A.S. Bespoke Architectural Structures Ltd

Transform your living space or work place with specialist glazing made to the highest standard. Family based business manufacturing, supplying and installing glazing systems to the domestic and commercial market specialising in sliding folding doors: Call us now for a **FREE no obligation quotation.**

**Best quality and service assured!**



**www.b-a-s.co.uk**  
**Tel: 01928 579957**

Unit 3, Sycamore Court, Manor Park, Runcorn. WA7 1RS

## ELLIS CLOTHING

**NOW  
SELLING**



All your favourite brands in  
Clothing, Footwear, Bags and Accessories  
for Men, Women and Kids

**London Road, Stockton Heath**

**Tel: 01925 210827**

**www.ellisclothing.com**





# Dental practice celebrates expansion

**LOCAL dentist Jill Cooper is celebrating the expansion of her dental practice.**

Based on Rushgreen Road, Dental Care with Jill Cooper now has four dentists on the team, which has a preventative philosophy working with every patient to improve their oral health and general well being. This is done by listening, explaining, recommending, monitoring and encouraging.

The practice minimally invasive dentistry, to preserve natural tooth structure and tooth strength, and pay particular attention to gum disease working with patients to maintain healthy gums and teeth, promoting fluoride supplements, as this is the most proven way to decrease tooth decay.

## Warm, friendly welcome

The practice provides a high quality dental service complying with all health and safety legislation. Patients receive a warm, friendly welcome and the team try their best to put you at your ease.

Other services available to patients include tooth whitening, cosmetic veneers, crowns and bridges, white fillings, treatment of jaw problems, dental implants, home visits and Botox and Derma Fillers.

The dental team is led by Jill Cooper BDS DPDS. She qualified in 1988 from University College London and obtained a diploma in Postgraduate studies in 2004 from Bristol University. She has worked in many practices over the years and has a vast experience in providing

general dental services.

Her particular interests are:- The treatment of children, Root canal treatment, treatment of gum disease, white fillings and prevention of Dental Disease.

The other dentists are Hilary Ellingham BDS DPDS MFGDP (UK) RCS Eng.

Hilary qualified in dentistry in 1985 from Edinburgh Dental School. After graduation, she gained considerable experience in general practice working with the Royal Dental Corps. She has been running her own practice for 10 years. She obtained a diploma in post graduate dental studies in 2006, a further diploma and membership of the faculty of General Dental Practitioners in 2007 and a certificate in Endodontics in 2009.

Louise Hawley BDS, who qualified in 2000 from The University of Liverpool, has worked as an Associate Dental Practitioner at several practices over the past ten years. Louise is very interested in Implantology and this is something she is able to offer to our patients. Also Louise has completed her Medical Aesthetics Practitioners Course and is able to provide Botox and Derma Fillers.

Soughol Mahmoudzadeh BDS qualified in 2004 from The University of Manchester. Soughol has since worked as an Associate Dental Practitioner in several practices. She has a great interest in cosmetic



Jill Cooper



Louise Hawley



Hilary Ellingham



Soughol Mahmoudzadeh

dentistry and also in facial aesthetic treatments which include Botox and Derma fillers.

There are also four dental nurses. Karen Jackson and Joanne Booth are both fully qualified and registered with the General Dental Council. Both are qualified in applying high fluoride varnish to teeth and will be holding

after school clinics and school holiday clinics to help provide fluoride varnish to children. Dawn Walker is at present undergoing her dental nurse training. Lisa Bailey has recently completed her dental nurse training qualification. Receptionists Karen Barker and Diane Boardman complete the team.

## Dental care with Jill Cooper BDS DPDS

...something to smile about

### Brighten your Smile for the Summer

Due to expansion Dental Care with Jill Cooper are accepting new patients.

Full Dental Examination only £17  
White Fillings from £55  
Professional Tooth Whitening only £249

All Children are put on a free preventative regime that has been proven to reduce decay in first teeth by 33% and in permanent teeth by 46%. Don't let your children miss out!

Botox and Dermal Fillers  
Now Available!

Children get free dental examinations and preventive treatment if parents are low cost private patients

Tel: 01925 758616  
152 Rushgreen Road, Lymm, Cheshire WA13 9QW  
dental-care@btconnect.com





# Food Fest to kick start Festival

**TASTES from around the world - including Thai, Turkish, Indian and French - help kick start this year's Lymm Festival which has a new principal sponsor Sniff & Water a new online pet food retailer.**

The company was set up by a Lymm based family after they discovered that all the best dog foods available in the market place was actually causing their young (and growing!) puppy to have an upset tummy.

Meanwhile the popular Street Fun

and Food Fest takes place on Thursday June 23 from 6pm and will feature a record number of local traders. Warm canapés, fresh cakes and homemade ice-cream will also be on offer.

Other entertainment includes a theatre company, a local version of Gardener's Question Time and expert gardeners Pete and Ged Moss - with their musical wheelbarrow.

This year's BIG Picture will be unveiled. Fifty enthusiastic local artists have recreated a painting by John Singer Sargent.



On Sunday June 26 there will be a recital by Rebecca Watson (Soprano) and Christian McKay (piano), pictured above, at Lymm United Reformed Church, called Music on a Summer's Afternoon.

Their programme will include works by Schumann, Granados and songs by Mompou. Tickets are £10/£8/£5 and can be purchased online (plus small booking fee) at www.lymmfestival.org.uk or via the Lymm Festival Box Office.

## Care home wins 'excellent' rating

A LYMM care home has been rated "excellent" following an inspection from the regulator the Care Quality Commission.

Brookfield House achieved the highest standard in care according to the national care home regulator.

### Price

Sarah Nolan, general manager of the home in Brookfield Road said: "We pride ourselves on providing the highest quality care, and we respect and celebrate the individuality of all of our residents. The 'Excellent' rating is a testament to the hard work and dedication of our team at Brookfield."

**No time for cleaning? We will take care of it!**

We always put our customers first. Let us take care of your household chores.

**Our services include:**  
Domestic Cleaning, Building Maintenance, Painting & Decorating

**Call us now: 01925 321 317**

**Technical Property Servicing**  
"I fix your problems"

Specialist in:

- Electrical Problems ✕ Plumbing Problems
- Kitchen Problems ✕ Bathroom Problems
- Appliance Problems ✕ Security Problems

Qualified - Experienced - Insured

**Mr Steven Brotherston**  
Tel: 07818 636 112

**REAL EARTH** TILE SHOWROOM  
TRADE PRICES

**\*MARBLE FROM £20 PER M<sup>2</sup>**  
**\*LIMESTONE FROM £18 PER M<sup>2</sup>**

WOOD FLOORING • PORCELAIN TILES • INDIAN STONE PAVING  
UNDERFLOOR HEATING • BATHROOM SUITES

Lymm Nursery • Rushgreen Road • Lymm • Cheshire • WA13 9PR  
T: 01925 759 607 • E: info@realearthuk.com

Up To **50% Off**

**REFURBISHMENT CLEARANCE**

We're closing for 5 days at the end of June for a shop refurbishment so all display models must be sold off at up to 50% to make way for the shopfitters.

**Branches Warrington**  
Widenspool Caseworks, Warrington WM1 6QF  
Located on A49 between Warrington and Stockton Heath.  
Free parking at front of store. Tel: 0800 542 744  
Opening times: Mon - Sat 9am - 5.30pm, Sun 11am - 4pm  
www.branchesofwarrington.co.uk



# more than just a smile!

[www.samedaysmiles.co.uk](http://www.samedaysmiles.co.uk)

**Unable to eat what you want?**

**Do you lack confidence?**

**Don't want to wear dentures?**



## permanent teeth in just one day!



It is now possible using modern implant techniques to achieve natural looking **permanent teeth in just one day**, allowing you to eat what you want, when you want and giving you a beautiful, confident permanent smile.

[www.samedaysmiles.co.uk](http://www.samedaysmiles.co.uk)



Call one of our patient co-ordinators and book your **FREE consultation** on:



# 0845 527 6689

## what a difference a day makes™

\*Rates correct at the time of going to press. 7.9% APR fixed for a 5 year term. An application is required and terms and conditions apply. Typical example for one fixed arch is approx. £15,950, requiring a £6049.84 deposit, followed by 60 monthly repayments of £199. Total amount borrowed £9,900.17. Total amount repayable on finance £11,940.07.  
\*\* 0% finance available for a 12 month term only, subject to terms and conditions. Full details available on request.



# Pupils promote 'garden of distinction'

**A LYMM school has been working with a local artist to help promote Warrington's Walton Hall Gardens.**

Work produced by pupils at Statham Primary School has gone on show at Manchester Airport's Terminal 3 as part of Cheshire's "Gardens of Distinction" project.

In all there will be 27 pictures produced during the year, working in conjunction with artist Andy Lee.

The project celebrates the richness and diversity of Cheshire's horticultural heritage and green spaces and aims to achieve significant impact for the regional tourism industry from local, national and international markets.

Funded by the European Regional

Development Fund (ERDF) the project works with 31 gardens under the banner of "Cheshire's Gardens of Distinction" to actively promote the group as the "Home of England's Finest Gardens".

Wendy Sinfield, community relations manager at Manchester Airport, said: "By working with the children we have been able to take young people out in to the countryside and gardens of Cheshire. We've worked with community artist Andy on several occasions in our work with local schools and we knew that the work would be a welcome



*The pupils with their artwork at the airport.*

addition to our terminals."

Teacher Stephen Cresswell said: "I would also like to thank all the organisers and in particular the artist Andy Lee. We were treated to a tour of the airport and were very well looked after."

Schools were selected by

Manchester Airport predominantly from areas close to the airport. Working with Andy, the children produced unique artwork that depicts key features of the gardens, showcasing the talent of the children and marketing the gardens as a tourist attraction.

## DAD celebrates 20 years

A WEEK of activities will be held in Warrington to mark the 20th anniversary of the North West Disability Awareness Day (DAD).

Last year's DAD saw a record number of 28,000 visitors, many travelling from across the North West and the UK.

DAD 2011 will be supported by a week of complementary events, leading up to the exhibition on Sunday July 10. Events will be held in a tented village in the picturesque setting of Walton Hall Gardens.

The day has continued to grow with the support of both local and national organisations. It boasts something for everyone with more than 300 exhibition stands promoting independent living, with areas dedicated to arts, sports and family entertainments.

DAD covers all disabilities, ages, carers and families, and there is plenty to interest those working in health, social care or disability. It offers a free and accessible park and ride service, free admission and programme.

Further information is available by visiting [www.disabilityawarenessday.org.uk](http://www.disabilityawarenessday.org.uk) or by ringing 01925 240064.



With an increase in sales, we currently have clients waiting to purchase. Ridgeway Residential is the right choice to sell your property quickly and efficiently.

**Urgently Required Properties For Sale. Please call for a Free Market Appraisal Today**

**FOR SALE**

**FOR SALE**



**7 Scholars Green Lane, Lymm**

Beautiful family detached property in one of the most sought after areas in Lymm village. The accommodation is on two levels. Ground floor, entrance hall, lounge, dining room, family room, conservatory, breakfast kitchen. First floor, 4 bedrooms and 2 bathrooms, the master having an en-suite. Gardens front, rear and an integrated garage. **£535,000.**



**12 Statham Close, Lymm**

Beautifully presented 3 bedroom link detached with enclosed rear garden. The property briefly comprises: Entrance Porch, lounge, dining room with open plan kitchen, garden room, utility room and downstairs W/C, three good sized bedrooms and family bathroom. UPVC double glazed, gardens and garage. Viewing Recommended. **£329,950**



**30 Quayside Mews, Lymm**

4 bedroom 3 storey townhouse in sought after location, easy walk of Lymm village centre and Ravenbank Primary school. Briefly comprises: Entrance porch, hallway, lounge/dining room, fitted kitchen/breakfast room, utility, 4 bedrooms, master with en-suite shower, family bathroom, downstairs shower room and integral garage. **£299,995**



**99 Chaise Meadow, Lymm**

Delightful recently constructed 4 bedroom semi detached property. Briefly comprises entrance hall, cloakroom W/C, dining kitchen and lounge with French doors opening onto the rear garden. 1st floor: Guest bedroom with en suite bathroom, 2 further bedrooms and family bathroom. 2nd floor: master bedroom with fitted mirrored wardrobes and en-suite shower room. No Chain. **£268,000**



**2 Albany Grove, Lymm**

A extended semi detached in a Cul-De-Sac location with good sized west facing garden. entrance hall, lounge, breakfast kitchen, downstairs W/C, dining room, 4 bedrooms, family bathroom with bath and corner shower, UPVC double glazed, Gas Central Heating with combi boiler, off road parking for three cars and front storage area. Viewing Recommended. **£235,000**



**3 Laburnum Court, Lymm**

Well presented modern mews in a court yard development. The property comprises of an entrance hall, downstairs W/C, fitted kitchen, lounge/dining room, three bedrooms, two bathrooms (one being an em-suite), gas central heating, double glazed, parking for two cars, enclosed rear garden. Viewings recommended. **£229,995**



**5 Beaver Close, Lymm**

A very good sized mews property in semi rural area called Pickmere. Comprises: entrance hall, downstairs W/C, large lounge/dining room, kitchen, 3 very good bedrooms, bathroom, en-suite shower, rear garden, off road parking, integral garage, gas central heating. The property lies between Lymm and Knutsford and has easy access to the motorway network. **£229,500**



**Flat 18 Newarth Drive, Lymm**

Modern second floor apartment within short drive of Lymm village. Comprises entrance hall, living room, kitchen with small breakfast bar, double bedroom, bathroom with shower above bath, UPVC double glazing, gas central heating and would make a great first time buyers property or an investment. Rental for the 50% shared ownership is approximately £180 per month. **£63,500**

**TO LET**

**22 Chaise Meadow, Lymm**

6 bedroom detached house, furnished. Available 10/06/2011 **£2,250pcm**

**16 Fairfield Road, Lymm**

4 bedroom semi-detached house, unfurnished. Available 28/06/2011 **£1,200pcm**

**Flat 5, Lymbrook House, Whitbarrow Road, Lymm**

2 bedroom flat, furnished. Available 07/07/2011 **£695pcm**

**38 Grove Avenue, Lymm**

3 bedroom semi-deatched house, furnished. Available 08/08/2011 **£695pcm**

**41 Albany Road, Lymm**

3 bedroom semi-detached house, unfurnished. Available Immediately **£675pcm**

**10 Newfield Road, Lymm**

2 bedroom terraced house, furnished. Available 15/06/2011 **£625pcm**

**TO LET**

**Due to the high demand in Rentals we require To Let properties in all prices.**

19 The Cross Lymm Cheshire WA13 0HR T. 01925 756931 E. sales@ridgewayresidential.co.uk



# Lymm May Queen Fes



Lymm Methodist church clowning around.



5th Lymm Brownies.



Ian and Pam Marks.

## WILLIAM H. LILL + Co.

Your local solicitor specialising in:-

- Conveyancing
- Wills & Probate
- Accident & Personal Injuries
- Divorce & Family Law

A friendly service for all your legal needs

Telephone: 753170 / 755668  
9 The Cross, Lymm WA13 0NY



## LYMM PARISH COUNCIL

Lymm Parish Council are pleased to support Lymm May Queen Festival



## SOLARFLAIR

the solar panel experts

### THE COMPLETE SOLAR SOLUTION

PV Photovoltaic Panels  
To provide FREE Electricity

Solar Hot Water Heating Panels  
To provide FREE Hot Water

Grants available through  
FEED IN TARRIPS

Grants available through  
THE RENEWABLE HEAT INCENTIVE

Solarflair are MICROGENERATION ACCREDITED

Therefore Payback GUARANTEED under the Governments Grant Schemes



Can you afford not to do it?

Call today 01925 753795 or 07947 211733 for a free estimate and survey  
email [info@solarflairttd.co.uk](mailto:info@solarflairttd.co.uk)



Pictured Left, Lymm May Queen Vicky Hewett aged 11 is crowned by Elizabeth Pritchard and Rose Queen Jessica Baillie aged 9 is crowned by Phyllis Greenaugh on the May Queen Field.

## LYMM GARDEN CARE EST 1990

**LAWN MOWING - Weekly / Fortnightly**  
Excellent mowers used

**All aspects of gardening including:**  
Hedge Cutting, Tree Pruning, Lopping and Felling  
Lawn Feeds / Fertilisers

Competitive Prices, call Greg Clarke on

**01925 757069**



# Tival 2011



Martial arts display.



Lymm ATFC.



Dorothy Irving.

## JOHN EMBLETON & SON LTD.

PAINTERS & DECORATORS

Established 1840

Tel: 01925 753006

Fax: 01925 756886

Camsley Grange, Camsley Lane  
Lymm, Cheshire WA13 9BY

Email: mail.embleton@btinternet.com  
www.johnembleton.co.uk



STATHAM LODGE

Country House Hotel

DINING

Lunchtime Lite Bites

& Bar Snacks

served weekdays Noon - 2pm

Evening Meals

available every day 6pm - 9:15pm

Afternoon Teas

£9.50 per person

Choose to dine in the comfortable & relaxed surroundings of the Squires Bar or Al fresco during the summer months at our Terrace Gazebo, with beautifully landscaped gardens & herbaceous borders.

TRIBUTE NIGHTS

Abba

Friday 7th October £29.95p.p.

Rod Stewart

Friday 4th November £25p.p.

Rod Stewart

& Michael Buble

Friday 23rd December £37p.p.

Or why not make a night of it!

Discounted accommodation

available for all functions

Tribute Dinner Dances include

3 Course Dinner, Tribute Artist,

Disco & Late Bar

Warrington Road, Lymm, Cheshire,  
WA13 9BP

www.stathamlodge.com

01925 752204

## Trattoria BACI



18 The Cross, Lymm.  
Tel: 756067

## LYMM METALS

Buyers of all grades of scrap metal

Copper, Brass, Lead, Steel, Gold, Silver  
and High Value Metals

Specialists in Computer Scrap

Tel: 01925 756376

Mobile: 07831 107525

Waste Licence No. CMS/134 720



## Beechwood Industries Ltd

Garden management solutions



Our Services include:

Garden Maintenance ● Lawn Care ● Garden Design  
Landscaping ● Construction ● Paving ● Tree Surgery

Contact your horticultural experts on

07749 253308 or 01925 860544

www.beechwoodindustries.co.uk

\*Free Lawn Care - For Full Maintenance Customers only





Lymm RBL.



Lymm Festival group.



Donkey rides proved to be popular on the May Queen field.



May Queen and Rose Queen crowning.

**PARKVIEW CAR SALES**



We need your clean, low mileage, family cars  
**URGENTLY**  
Best prices paid

Call Peter Now on:  
**01925 575737 / 07957 545479**

Formerly of: Park Garage, Lymm  
Now: **Chapel Walks Garage**  
**23 Padgate Lane, Warrington**  
(MOT AND SERVICE CARS COLLECTED FROM LYMM)



1st prize winners North Pole dancers from the Gallery Salon



WI holiday



Thewall Morrismen.



# Village stages a 'big weekend'

THE village of High Legh is putting itself on show over the weekend of Saturday and Sunday, July 9-10 - the "Big Weekend."

Residents and visitors are being invited to take part in a variety of events including a display of wedding dresses through the generations and a scarecrow festival.

The wedding dress exhibition - which will include other heirlooms, treasures and vintage clothing and accessories of historic or design interest, is taking place at St John's Church and St Mary's Chapel over both days to raise money towards the maintenance of the two buildings.

The scarecrow festival will also take place over both days and villagers are already busy making scarecrows of all shapes and sizes which will be displayed in gardens throughout the village.

Visitors will be able to get maps showing where the scarecrows can be found and will be able to vote for their favourite.

On the Saturday only, from 1pm, St John's Church will be staging their annual summer garden party, with tombola, cakes and provisions, bric a brac, raffle, children's games, etc.

On the Sunday, Lord Grey is opening his garden at High Legh

House, with an opportunity to "pick your own" raspberries in aid of the Campaign to Protect Rural England.

On Saturday, light lunches and afternoon teas, strawberries and sparkling wine will be available at St John's Church Room from 12.30-2pm and on the church lawn from 2pm.

And on Sunday the famous "High Legh Sunday Teas" which have been drawing visitors from all over Cheshire and beyond for 30 years, will again be served at the Village Hall with tea, coffee and home-made cakes and sandwiches.



## New Chairman elected

THE new Chairman of Lymm Parish Council is David Openshaw who took over the "chains of office" from Pam Hunter.

Town Crier Peter Powell was elected as deputy Chairman.

**PRIMROSE HILL NURSERIES**

**SUMMER BEDDING PLANTS & HANGING BASKETS READY NOW!**

**DISCOUNTS FOR QUANTITY**

*Caring Family Business*

*Open 7 days a week*

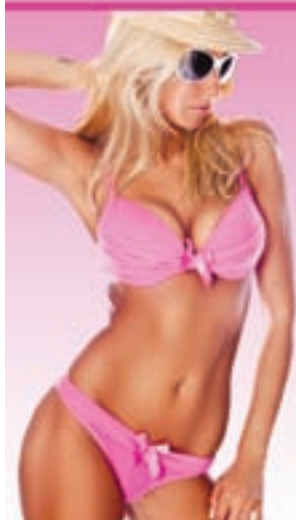
*Warrington Road, High Legh, Knutsford, Cheshire WA16 0SQ*

Telephone  
**01925 752635**

## Beach Confident

Losing weight at any time of year can be very difficult, but doing it shortly before the holidays seems like an impossible task for many people. At Laserina Clinic we believe in cutting edge slimming technology and designed 'Instant Slimming Packages' which will help you to get rid of extra inches with a proven combination of targeted treatments. The packages consist of Body treatments (combination of Instant Inch Loss Wraps and Endermologie), non-surgical Face Lifts and Ultrasonic luxury facials and to suit any pocket.

We are also offering a long lasting 'inch loss' program with the latest generation of Endermologie. UPOMASSAGE by Endermologie® is the treatment dedicated to reduce fat, improve appearance of cellulite and give you a more contoured figure. The new innovative FULL BODY treatment is able to produce faster and more targeted results without strenuous exercise, strict dieting and invasive procedures.



- Hair Removal
- Vessels Removal
- Rosacea Treatment
- Instant Slimming Packages
- Lipomassage by Endermologie
- Non-surgical Face Lift
- Ultrasonic Deep Skin Cleansing

Book your FREE consultation on 0845 833 0667

www.laserina.co.uk  
24a Washway Road  
Sale M33 7QY

the **LASERINA** clinic



**hartwelldevelopments**

You are only one phone call away from all these services:

- ELECTRICAL
- HEATING
- JOINERY
- REPLACEMENT WINDOWS
- EXTENSIONS
- PLUMBING
- GAS
- BUILDING
- RENOVATIONS
- NEW BUILD

**757475**

Tel: 01925 757475 Fax 01925 756886  
Camsley Grange, Camsley Lane, Lymm, Cheshire WA13 9BY  
www.hartwelldevelopments.com | info@hartwelldevelopments.com  
Registered in England 7283988



# Green group targets the plastic bag again

## LOW Carbon Lymm is hoping to make the village plastic carrier bag free by next year.

The group wants to encourage people to live the sustainable way - and members handed out more than 300 reusable linen bags during a plastic bag free day.

The linen bags were made and decorated by Su Williams and some of the children from Lymm Youth Club.

During the day volunteers from LCL were in local shops talking to people about going plastic bag free and said most shoppers supported the idea.

A spokesperson said: "The group has the ambition that the village will be bag free by 2012 and plans another similar event later in the year. In the meantime it is hoped more village residents will remember to take their reusable bags with them the next time they visit the shops."

As part of the Lymm Festival preparations, the group have devised a low Carbon Lymm "Green Trail" for Saturday July 2. Those taking part will be able to visit a number of homes where low carbon technologies and appliances have been installed, such as solar panels and wood fuel boilers. A new electric vehicle will also be available and people will be able to travel around the trail the low carbon way.

Tickets and maps for the Green Trail can be picked up at the Festival Box Office in the Village Hall Annex from Saturday June 18 or bookings can be made from the website: [www.lymmfestival.org.uk](http://www.lymmfestival.org.uk)



Su Williams, LCL chair Richard Pearce and the youngsters who helped with the bag making and decorating.

## Dancing the bunting trail

LYMM residents who go down to the Trans-Pennine Trail on Sunday July 2 are sure of a big surprise.

Dancing The Trail - part of this year's Lymm Festival, celebrates one of Lymm's great amenities with groups dancing the trail at intervals from Heatley to Thelwall viaduct throughout the afternoon from 2-pm till 4pm.

To mark out the dance venues Su Williams and her team drawn from Princes Trust Groups at Lymm High School, Statham After School Group and Lymm Senior Social have

produced well over a mile of bunting.

"It's been a great team effort" said Su "and epitomises what the festival is all about".

Production was accelerated thanks to help of John Mason of the senior social group and his trusty guillotine!

The bunting will be put up with the help of Third Lymm Scout Group and Warrington Women's Walking Network just in time for the event and will add an extra splash of colour to what should be a memorable event.



## MP visits luncheon club

WARRINGTON South Mp David Mowat was special guest at Oughtrington Luncheon Club to see first hand the work of local volunteers helping out in the community.

He is pictured chatting to members May Pickard (left) and Silvia Rowles.

Other special guests pictured (L-R) included Wendy Moya from Warrington Borough Council's adult social care, Lyn Mackenzie of Lymm High School Music Department, David Osborne head adult social care provision,

Ray Milner luncheon club treasurer, Brian Wilson Warrington Community Transport dial a ride and local councillor Peter Powell.





# Bespoke Legal Services

Offering Financial Services to clients for over 35 years



## HOMEOWNERS AGED 50+

You can protect your home from future Care Home Fees!

### HOMEOWNERS ARE YOU AWARE THAT...

1. Nearly one in five people have to sell all their assets including their family home to fund their place in a care home.  
*(Daily Telegraph 17 / 11 / 2007)*

2. If you are one of the 1 - 3 men or 1 - 5 women who will need long term care, and have £23,000 in cash / assets (*this includes your home*), and live in England, your local authority will assess you as having to meet the full cost of care.

*(The Observer 17 / 5 / 2006)*

### PLAN AHEAD NOW SO THAT YOU LEAVE YOUR HOME TO YOUR FAMILY, NOT THE LOCAL AUTHORITY!

If you don't take action now to protect your home, you could lose it to fund long term care. 70,000 people in 2008 had to sell their home to pay for long term care. However, you can protect your family's inheritance very simply by ensuring that your estate goes to your family, and isn't used to pay expensive nursing home costs.

You have over your lifetime worked hard to keep and maintain your home, plan ahead now so that if you do go into care, your home is not at risk!



*Specialist in Wills & Estate Planning.  
Member of the Society of Will Writers.*

FREE information pack - to receive a free copy of your information pack without obligation call

# 0800 542 0881 / 01942 244776

Lines open Monday - Friday 8am - 8pm, Saturday 9am - 1pm.

Or email your name and address to: [info@bespokelegalservices.co.uk](mailto:info@bespokelegalservices.co.uk)

Bespoke Legal Services is a trading style of Kennedy Lloyd Ltd, registered in England & Wales at Companies House, No. 06790448, registered office: Archwood House, 46-48 Long St, Middleton, Manchester M24 6UQ.



## Motoring

# Value for money estate car

**THE new Hyundai i40 Tourer, which goes on sale from September, is a stylish, medium-sized family estate car.**

It will come in three main trim levels - Active, Style and Premium - with a choice of three efficient engines and a starting price from £18,395 on the road. The company claim it has the lowest insurance group ratings in its class.

Tony Whitehorn, managing director, Hyundai Motor UK says: "The all-new i40 Tourer is a stylish yet uncompromised addition to the medium family estate car market. It offers exceptionally low CO2 emissions and high fuel economy; an intuitive, spacious and contemporary interior package combined with an unparalleled level of standard equipment for its class - all at an



accessible price.

"The i40 is a sign of how far Hyundai has come in recent years, and truly embodies where the brand is going. We believe that it offers a unique, value for money, customer proposition in this highly competitive market segment."

Standard features include 16" alloy wheels, Bluetooth connectivity with voice recognition, leather steering

wheel with audio controls, electric heated door mirrors with integrated LED indicators, electric front and rear windows and electric parking brake with automatic hold function.

Touch screen satellite navigation with rear view camera, front and rear parking sensors, cruise control and dual zone climate control are standard on the mid-point Style range.

Premium models benefit further from

the addition of leather upholstery, panoramic sunroof, keyless entry and supervision instrument cluster with LCD colour display as standard, plus the option of the Lane Departure Warning and Smart Parking Assist, heated leather steering wheel and ventilated front seats.

Later in the year, the Tourer will be joined by a four-door saloon.

UNIPART  CAR CARE CENTRE

**FREE Local Pick-up & Drop Off Service**

 **AUTOSAFE**  
Quality Assured



# Agden Park Motors



Park Garage A56, Agden Brow, Lymm

**5 Star**  
workshop facilities  
for servicing and repair



**BODYSHOP**  
01925 752235

**Over 300**  
tyres  
at competitive prices!



**MOT Testing**  
petrol & diesel



**AIR**  
CONDITIONING  
REGAS/SERVICE

BIG ENOUGH TO COPE . . . SMALL ENOUGH TO CARE!

Contact **ALLAN** or **GEOFF** on **01925 752447**



# Open Air Theatre returns

THE popular Grosvenor Park Open Air Theatre returns from July 7 to August 21 with an impressive cast of some of the country's finest actors.

Evening and matinee performances of Shakespeare's 'As You Like It' and 'Merlin and the Woods of Time' by Glyn Maxwell are set to please and delight both new and returning audiences at the only full time professional open air theatre company outside of London.

### 'In the round'

The unique outdoor theatre at Chester is constructed 'in the round' to create a close connection between the actors and the audience. There is an area in front of the stage to enjoy picnics and there will be concession stands



selling wine, summer drinks and nibbles plus blankets and cushions.

Tickets for Grosvenor Park Open Air Theatre are available from as little as £12 and can be booked online at [www.grosvenorparkopenairtheatre.co.uk](http://www.grosvenorparkopenairtheatre.co.uk) or by phoning the box office on 0843 241 7868.

## Competition

Lymm Life and associated publications have five pairs of tickets to give away for the performance of Merlin and the Woods of Time on Thursday, July 28 at 7.30pm.

To be in with a chance of winning, simply answer this question.

Merlin was a famous...

A. Politician; B. Architect; C. Wizard

Entrants should send an e-mail entitled Grosvenor Park Competition with the correct answer to [info@warrington-worldwide.co.uk](mailto:info@warrington-worldwide.co.uk) by Friday July 8.

## Twilight walk

THE annual Lymm High School "Twilight Walk" in aid of the Christie Hospital takes place on Wednesday, July 13.

It will start at 6pm from the school and involves a 5k walk around Lymm by pupils, parents, staff and members of the local community.

The entry fee - £10 for adults and £5 for children - includes a hog roast and a free cup of coffee back at the school after the walk.

Sixth formers will act as marshals and pupils will also be running stalls such as hook-a-duck, tombola, bottle hoppla, asteroid blaster, etc.

Organisers are hoping to make this year's event even bigger and better than last year's, which raised more than £2,000.

**GROSVENOR PARK OPEN AIR THEATRE**  
 Idyllic ★★★★★  
 THE GUARDIAN  
 Grosvenor Park Chester

**As You Like It**  
 By William Shakespeare 7th July – 21st August 2011

**Merlin AND THE WOODS OF TIME**  
 By Glyn Maxwell 14th July – 19th August 2011

advance tickets from **£12**

**BOOK NOW**  
 call 0845 241 7868 / online at [www.grosvenorparkopenairtheatre.co.uk](http://www.grosvenorparkopenairtheatre.co.uk)

61—67 Knutsford Rd,  
 Warrington  
 Cheshire,  
 WA4 1AB

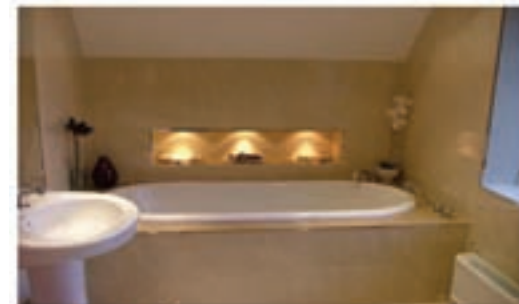
**Classic Home Improvements**  
 Established 1987

Unit 3, Bold Ind Est,  
 Lunts Heath Rd,  
 Widnes,  
 WA8 5RZ

Tel : 01925 445455

Everything You need Under ONE ROOF!

Tel : 0151 420 1666



- Fireplaces
- 
- Wood Burning Stoves
- 
- Kitchens
- 
- Bathrooms
- 
- Bedrooms
- 
- Granite Worktops



**HEAS**

*All Installations Project Managed with 2 Year Guarantee!*  
 3D Design & Plan Service - Granite Worktop Specialists  
[www.classichomeimprovements.co.uk](http://www.classichomeimprovements.co.uk)

**gas safe REGISTER**



# Gourmet wine-tasting evening



Gursel and Carol with guests and members of staff.

A SPECIAL Spanish gourmet wine tasting evening proved a huge success at Lymm's Elmas Mediterranean restaurant.

Held in conjunction with C & O Wines of Timperley and the Valencia restaurant in Sale, who loaned a giant paella pan and some traditional Spanish culinary expertise, the evening attracted more than 60 diners and wine tasters.

The Paella pan held and cooked 12 whole Chickens, 4k of Mussels, 2k Squid, 4k of sea-bass and authentic Spanish Paella Rice - plus a few traditional secret ingredients!

Five courses and five Spanish wines were also on offer.

The evening was hosted by owner Gursel and Carol Sahinbas - who are now planning another special gourmet evening in the near future.

# Barney the Owl causing quite a flap!



IT stands eight feet tall, it weighs more than a few tons and it's causing quite a stir down at Agden Wharf.

Chainsaw sculptor Tim Burgess's giant owl stands, appropriately enough, outside the Barn Owl pub and is causing quite a few heads to turn.

Mine host Carl Warburton commissioned the owl from Rostherne-based Tim after deciding it was time his canal-side pub had a barn owl of its own.

Now it has caused so much comment that Carl has invited Tim back to the pub on August 21 with top American chainsaw sculptor Bob King, who will be in this country at the time, to give demonstrations in their art.

It might cause a bit of sawdust on the car park - but Carl doesn't give a hoot!

## The Venue

Thirlmere Lodge, Rectory Lane, Lymm WA13 0AQ

**The Best Free Entertainment In The North West!**

**Discounted drinks all night Monday**  
**Our famous 'Open Mic' Night every Tuesday from 9pm**  
**FREE Chinese & 2 for 1 cocktails every Wednesday**  
**Live acoustic music every Thursday and Saturday**

**Happy Hour**  
 Sun-Thurs 6-8  
 Fri & Sat 5-7

**Late Bar til 12pm**  
**Thursday, Friday and Saturday**

**Available for private functions every afternoon and all day Sunday**

**Great selection of Wine and Draught Beers from around the world:**  
**Carling • Boddingtons • Peroni**  
**Big Tree Real Ale • Magners Cider • Amstel**

**Now serving Freshly Cooked Pizzas from Elmas Restaurant and Tomlins award-winning pies**

**Visit our website:**  
[www.thevenue.lymm.co.uk](http://www.thevenue.lymm.co.uk)

**Wi-Fi Hotspot**  
 Come along and get online for FREE

# Tel: 01925 756393

## BOWDENS BISTRO & WINE BAR

16 Bridgewater Street,  
 Lymm WA13 0AB  
 Tel: 01925 754852  
[www.bowdensbistro.com](http://www.bowdensbistro.com)

### Recipe For A Great Night Out

- Take a cosy, informal restaurant setting, in the heart of Lymm village
- Add a couple of decent chefs who know how to cook classic dishes
- Combining 5\* kitchen know how with freshness, add some imagination to create a simple menu with French Bistro dishes like Coq au vin, Steak Diane and Crème Brulee
- Frequently add some special dishes to show off a little
- Ensure things we all hate paying for like veg, water and a basket of bread - are included in the price
- Choose wines that people have heard of - priced so they can afford a second bottle
- Find staff that are attentive, friendly who remember your name next time

Lyn and Dave are as local as you are and they've put their heart and soul into launching Bowdens Bistro. They know what it takes to make a great night out - see if it works for you.

We would like our Bistro to be your Bistro

NEW!

**BOWDENS BALCONY**

Terrace overlooking Slitten Brook, serving authentic Spanish Tapas



# Dining Out with Lymm Life

at the Lymm Hotel

DESPITE many changes over the years, the Lymm Hotel retains a certain old world charm that is almost unique today.

Step inside the spacious restaurant and you step back to an age of refinement and gracious dining, with spotless white table cloths and silver tableware.

It has, for years, been one of the places to be seen in Cheshire and clearly intends to remain so. Service is superb, the restaurant is big enough for tables to be well apart yet small enough to have a cosy atmosphere.

Importantly, it is far enough from the hotel's function rooms for diners to be undisturbed by whatever else is going on.

We started our meal with fish cakes and Scotch Broth, both of

which proved delicious and prepared us for the main course. Other options which tempted were smoked salmon, ice jumbo shrimp cocktail, chicken liver parfait and baked wild mushroom lasagne.

For our main course we chose Chicken Kiev and a tasty mixed grill which was nicely presented and came in extremely generous portions. Other options on the menu included gammon steak, pumpkin ravioli, pan fried fillet of Shetland salmon and various steaks.

A hearty appetite was required to tackle dessert after such a sumptuous meal, but in the cause of duty we selected sticky toffee pudding and a deliciously decadent knickerbocker glory which rounded off a thoroughly enjoyable evening.



## 10% DISCOUNT ON SUNDAY MENU

Try our 2 or 3 course Sunday menu and get 10% discount off your bill including drinks. This voucher must be presented before 16.00hr

### Forthcoming events:

Sunday 19th June: **Fathers Day**. Special Sunday Lunch for dad.

June 23rd: **Street Food Festival and Fun BBQ** in the Rock garden

### LYMM FESTIVAL

Saturday July 9th: **123 -1 Party**

Lees have owned The Spread Eagle pub for 123 years and Nick has managed the pub for 1 year. Disco and fun

Spread Eagle, 47 Eagle Brow, Lymm, Cheshire, WA13 0AG  
Tel 01925 757467 Email [spreadeagle@jwlees.co.uk](mailto:spreadeagle@jwlees.co.uk)



BE YOURSELF

## We tick all the boxes!



THE LYMM HOTEL



THE Lymm Hotel is proud to introduce Head Chef Andre Sokolski who ensures the finest ingredients are used.

The hotel 'ticks all the boxes' with food sourced from the highest quality locations within the UK.

All meals are prepared on-site by our highly trained staff, led by Andre.

The food complements the new Steak and Grill Lounge which has been given a fresh and contemporary feel for dining.

At the Lymm Hotel we believe that eating should be one of life's pleasures.

We recognise that carefully selected quality produce, prepared simply by people who are passionate about food, clearly taste better.

All our ingredients are local where possible but always specially sourced and carefully selected.

### ✓ SCOTCH BEEF

The beef served in Macdonald Hotels is the best in the UK. Sourced from Scottish mainland and island farms, our beef is fully traceable back to its point of origin. It is fed on mineral rich grass and matured for a minimum of 21 days to improve taste and then hand cut by the professional butchers at Scotbeef using time honoured techniques.

### ✓ FREE RANGE CHICKENS

The chickens we source are free range, ensuring that they have been reared with care and free to roam around which leads to a greater quality and texture of meat.

### ✓ TRADITIONALLY SMOKED FISH

There are many ranging qualities of smoked fish; many are not even smoked just soaked in flavourings. The fish used by Macdonald Hotels is cured by John Ross Jr (Aberdeen) and smoked in truly traditional 150 year old red-brick kilns. Awarded Gold by the Guild of Fine Foods, John Ross Jr is also Freedom Food and Soil Association approved and certified, and a proud holder of the Royal Warrant, supplier to H.M. The Queen.

### ✓ BRITISH PORK

Much of the pork sourced in the UK comes from the EU with varying quality due to the make up of feed and the conditions in which it is reared. The only pork we buy is produced to the

British Meat Quality Standard, outdoor reared, regionally sourced and Freedom Food approved.

### ✓ FREE RANGE EGGS

Macdonald Hotels only buy and source British free range eggs that also carry the Lion Quality mark. This mark can only be used on eggs which have been produced in accordance with UK and EU law and the Lion Quality Code of Practice. It ensures the eggs we use have been produced to the highest standards of food safety.

### ✓ FRESH FISH

The finest wild white fish, caught from sustainable sources around the UK, is delivered fresh every day to our hotels.

Enjoy the 'Great British Sunday Carvery' every Sunday using all the finest ingredient and service at its very best.

£14.95 for three courses – half price children aged 5 – 12 and under 5s EAT FREE.

Afternoon tea is available 7 days per week at only £9.95 per person.



THE LYMM HOTEL

Tel: 01925 752233 | Whitbarrow Road, Lymm WA13 9AQ

www.macdonaldhotels.co.uk/lymm | Email: [general.lymm@macdonald-hotels.co.uk](mailto:general.lymm@macdonald-hotels.co.uk)



# Lymm Osteopathic Practice

Established 1979

**SUZETTE PULMAN, N.D. M.R.N. D.O.**

Registered Naturopath & Osteopath

**DARREN HAYWARD, B.Sc. (Ost)**

Registered Osteopath

We are both registered with The General Osteopathic Council (GO.Sc.)

Open Monday to Saturday

**Tel: 01925 752264**

The Rise, 16 Grammar School Road, Lymm WA13 0BQ  
(Easy Access Road Parking)

Registered with all major insurance companies



Pets and Supplies

**Birds • Reptiles • Rodents • Fish**

Hutches, Cages, Tanks, Toys and Accessories  
Variety of food inc. frozen, live & wild bird food and Feeders

Advice • Delivery • Small animal boarding  
Rabbit and Guinea Pig Nail Clipping



Website: [www.animal-magic-pets.co.uk](http://www.animal-magic-pets.co.uk) Email: [animalmagicpets@gmail.com](mailto:animalmagicpets@gmail.com)  
Tel: 01925 558970 | 10 Bridgewater Street, Lymm, WA13 0AB



# Pestaway

**Wasp, Ant, Silverfish  
Rat, Mice & Squirrels  
Specialist**

**25 Years Experience**

**All Work Guaranteed**

**Call Now On 07823 338 682  
or 01925 755 702**

**elmas**  
MEDITERRANEAN CUISINE

Award for Hygiene

**Special 2 Course Lunch**  
Early Bird Menu available Sunday to Thursday

Free home delivery (2 mile radius)  
or call and collect a Takeaway meal

2 Pepper St, Lymm WA13 0JB Tel: 01925 756049  
[www.elmasrestaurant.co.uk](http://www.elmasrestaurant.co.uk)

# LYMM ELECTRIC & HARDWARE

EST 1974

Electrical Goods • Repairs • Rewires  
Alarms • Security Lights  
NICEIC approved electrical contractors

**Dyson/Vac repairs & Service**

All work guaranteed

**01925 755252**

12 Bridgewater Street, Lymm, Cheshire

# Want to save money?

**Join the club!**

(over 350,000 people already have)



- ✓ Guaranteed savings!
- ✓ Save 25% on your household bills
- ✓ Award-winning customer service
- ✓ Which? Best Buy - Phone and Broadband Bundles Feb 2010
- ✓ UK's cheapest line rental
- ✓ Free Global Calls\*
- ✓ 'Triple Value' guarantee on gas and electricity
- ✓ Cheapest online shopping
- ✓ 1000's of High Street retail partners
- ✓ Earn CashBack on shopping and petrol

For full details contact:

**0800 955 5247**

New Media Centre, Old Road, Warrington WA4 1AT



\*Charges, terms and conditions apply. See www.club.co.uk for full details.

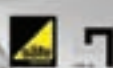
## COMMERCIAL & DOMESTIC HEATING, PLUMBING & GAS WORK

- Gas installations and repairs to: boilers/plumbing/water heating systems
  - Oil/LPG Heating Systems
  - Ornamental lead roofing
  - Landlord gas safety certificates.
  - Home buyer reports
- Established for 20 yrs  
DAP Discounts  
No Call Out Charge

# ICM

SERVICES UK LTD  
PLUMBING AND HEATING

**TEL: 01925 755677**  
[info@icmservices.co.uk](mailto:info@icmservices.co.uk)  
[www.icmservices.co.uk](http://www.icmservices.co.uk)





# Obituaries

## Annie (Ann) Irwin

THE funeral has taken place of Mrs Annie (Ann) Irwin, wife of the minister of Lymm (Sion) Independent Methodist Church, who died at her home in Great Sankey on April 7.

She is survived by her husband, Ken, daughter Susan, son Stephen, two brothers, three grandsons, a great granddaughter and she also had three step grandchildren and eight step great grandchildren.

Ann came to Lymm IM Church in Cherry Lane in 1983. She played an active part in the life of the church, both as treasurer and organist for 20 years until her death.

She organised many special events at the church and enjoyed being involved in the catering. She was involved in the church's outreach to residents of Booths Hill House and regularly pushed residents in wheelchairs up Cherry Lane so they could attend Sunday morning services. She was also involved in the church's mission to Romania.

Ann enjoyed spending time with her family and friends.

The funeral service was attended by more than 200 people and was conducted by Mr JA Dolan. This was followed by cremation at Walton Lea.

Funeral arrangements were by John Burrows and Sons of Lymm.

## Irene Wardle

THE funeral has taken place of Irene Wardle, aged 84, a resident of Lymm for 28 years, who died on May 8.

Irene moved to Lymm from Manchester and for more than 30 years she ran the Children's Christian Crusade, conducting children's missions throughout the UK, until the onset of Parkinson's Disease. She was well known in church circles and is survived by her sister, Hilda.

A service of thanksgiving took place at Lymm Baptist Church on May 30.

Funeral arrangements were by John Burrows and Sons, of Lymm.

## Edwin Blease

THE funeral has taken place at Altrincham Crematorium of retired engineer Edwin "Eddie" Blease, aged 86, a resident of Lymm, who died in hospital on May 19.

Mr Blease, who served in the Royal Navy during the war, was a member of numerous local foreign bird clubs. He enjoyed holidays at home and abroad, his garden and, more recently, tropical fish.

He leaves two brothers, two daughters, one son, six grandchildren and seven great grandchildren.

Funeral arrangements were by John Burrows and Sons, of Lymm.

## Shirley Bancroft

THE funeral has taken place of Shirley Bancroft, aged 69, of Albany Road, Lymm who died in St Rocco's Hospice on May 11.

Mrs Bancroft was born in Lymm and lived in the village all her life. She attended Lymm Secondary Modern School and worked as a cook at The Chestnuts and Booths Hill House.

In the fifties and sixties, she danced for Broomeedge Acrobats, which were run by her dad and later enjoyed line dancing, walking her dog Jess and holidaying in Cornwall, Portugal and Australia.

Funeral arrangements were by John Burrows and Sons of Lymm.



## Albert Dixon

THE funeral has taken place of Albert Dixon, aged 72, of Rushgreen Road, Lymm, who died at home on April 24 of Motor Neurone Disease.

Mr Dixon is survived by his wife, Sylvia, three children, Chris, Tim and Phyll and granddaughter Hattie.

The funeral was at Altrincham Crematorium and arrangements were by John Burrows and Sons of Lymm.

Established 1878

## John Burrows & Sons

Independent Family

## Funeral Directors

M. G. Tandy  
J. A. Tandy

16 Higher Lane, Lymm  
Tel: 01925 752501

# Meet your MP

## David Mowat

David Mowat, MP for Warrington South, holds regular surgeries throughout the constituency. If you would like to arrange an appointment to discuss an issue of concern to you please e-mail him at [david.mowat.mp@parliament.uk](mailto:david.mowat.mp@parliament.uk) or telephone 01925 231267.



**David Mowat**  
Member of Parliament for Warrington South  
[www.davidmowat.org](http://www.davidmowat.org)

Produced by David Mowat MP, House of Commons, London SW1A 0AA

THE NEW MEDIA CENTRE  
OLD ROAD, WARRINGTON WA4 1AT  
**01925 240247**  
[info@247print.net](mailto:info@247print.net)



10,000

# A5

FULL COLOUR

£248.00

PAY FOR 1 SIDE  
GET THE OTHER  
SIDE PRINTED

## FREE

500

FULL COLOUR

Digital Business Cards  
(Buy 1 set, get 1 set free)

£35.00

60"X40"

FULL COLOUR POSTERS

ONLY £12.00 EACH

100

# A3

£38.00

## FULL COLOUR POSTERS

\*ALL PRICES ARE SUBJECT TO VAT



**CLASSIFIED**

**Call 0800 955 5247 to advertise**

**ACCOUNTANCY & BOOKKEEPING**

**LYMM TAX SERVICES**

Are you a business in need of a new accountant?

New chartered accountancy practice opening in Lymm to serve local small businesses

Low rates, high standards

Accountancy, tax, VAT, payroll and bookkeeping

Contact **jane@lymmtax.co.uk**  
**Tel 07759 051788**

**SAGE BOOKKEEPING.** Self employed and experienced bookkeeper. IAB qualified. Contact Jane Rattigan on 07836 698886.

**AIR CONDITIONING**

**CLIMATE CONTROL BY WARRINGTON** based 4 Seasons, for offices, shops, surgeries, schools, homes and conservatories like yours! Installed in a day guaranteed 5 years. Keeping you cool when it's hot and warm when it's not. **www.4sac.co.uk 01925 756620**

**ART**

**SILK PAINTING.** Learn easy technique in a relaxed atmosphere. Suitable for complete beginners. Starts 29th June, £26 for 4 weeks 1-30 to 3-30pm @Baptist Church. Tutor: Jane Chinae (BA Hons). Booking essential: **07929 263269 j.chinae@yahoo.co.uk**

**BATHROOMS**

**The Bathroom Refurbishment Co.**  
We can create the Bathroom of your dreams  
One Warrington based Company  
One Job from start to finish  
Unique 3D virtual CAD design system  
Please visit our website  
[www.bathroomrefurbishment.co.uk](http://www.bathroomrefurbishment.co.uk)  
Please Ring Wayne  
**01925 826 828 or 07976 574 828**

**LYMM KITCHEN & BATHROOM PROFESSIONAL INSTALLATION.** Ceramic wall & floor tiling. For free estimates and advice contact **Rob Evans on 01925 752623 business or 07763 770408 mobile.** Est. 2002. Local references provided

**BUILDING SERVICES**

**BIG DIG Groundworks**  
Flagging, Back Filling, Garden walls, Fencing, Patios, Drives, Foundations. For free estimates call **07934 563266** or **Tel: 0151 424 5462**  
[www.bigdiggroundworks.co.uk](http://www.bigdiggroundworks.co.uk)

**BUILDING SERVICES**

**BRICKLAYER AVAILABLE** for garden walls, pointing etc. **Tel: 01925 755441 Mobile: 07966 491624**

**DM BUILDING** - All types of building and property maintenance work undertaken. Extensions, patios, tiling and plastering. For a free quotation call **Derek on 07912 033601**

**CARPETS, CURTAINS & INTERIORS**

**CURTAINS, CARPETS, VINYLs**, blinds, wall paper, top brands including Harlequin, Jane Churchill and Casadeco. Made to measure by friendly knowledgeable staff. Free carpet uplift and removal with any new carpet purchase. **Xross Interiors, The Cross, Lymm Tel 01925 758298** or email **xrossinteriors@live.co.uk**

**CUSTOM-MADE** curtains and loose covers. All accessories supplied and fitted. Made-to-measure blinds. Our fabric or yours. **Tel: Orchard Soft Furnishings 01925 756388.**

**CARPETS, CURTAINS & INTERIORS**

**Paul Bains Flooring Solutions Ltd**  
Carpets, Wood, Vinyl, Laminates  
*Domestic & Commercial Supplied & Fitted*  
Family business covering all aspects of flooring including domestic & contract locations  
Uplifting of old flooring can be arranged  
Moving of furniture by arrangement  
Limited disruption from start to finish  
Check website for previous installations  
[www.paulbainsflooringsolutionsltd.co.uk](http://www.paulbainsflooringsolutionsltd.co.uk)  
**Office: 01925 758835**  
**Mobile: 07973 376224**

**CARPET CLEANING**

**A1 STAINBUSTERS:** Fully guaranteed carpet and upholstery deep dry cleaning. Clean & dry in only ONE hour. Quotes for both commercial and domestic. Contact the Local expert **John Latham on 01925 205210 or 07765 314080**

**SAFECLEAN: SAFE ORGANIC CLEANING.** Specialists in cleaning all leather and fabric upholstery, rugs, carpets and curtains in situ. Ask about our new organic allergy relief system, Guardsman stain protection plans and carpet repairs. **Richard Vaal on 0808 144 8178**

**SIMPLY THE BEST CARPET CLEAN YOU WILL EVER** have. Cleaners UK Ltd. Est 23 yrs. Have your carpets & sofas beautifully deep cleaned leaving them fresh smelling & colour restored. Latest & best methods. Dry/steam. Professional, reliable & affordable. For more info call **Neil Riley on 01925 264989/07831 336060** [www.cleaners-uk.net](http://www.cleaners-uk.net)

**CENTRAL HEATING**

**GAS SAFE REGISTERED ENGINEER.** Andy Gas of Lymm, specialist in: Boiler upgrades, servicing, repairs to all domestic heating and gas appliances. Professional service. **Tel Andy on: 07753 838129 or 01925 753712.**

**CHILDREN'S ACTIVITIES**

**TUMBLE TOTS** is the leading national physical play programme for children, classes available in Knutsford Hale & Bowden. We can be booked for private parties. Contact **Jane on 07812-144450. www.tumble tots.com/sale**

**CHILDREN'S THERAPY**

**JANE FAY, REGISTERED PTUK PLAY Therapist** for children with behaviour or emotional problems, sleeping problems, anxiety, withdrawn, frequently angry, suffered bereavement/loss, ADHD, on autistic spectrum. **Tel 07703 661126 www.playtherapy4children.co.uk**

**CLEANING SERVICES**

**arleys angels**  
• Spring Clean Specialists  
• Presenting your home for sale  
• Moving house  
• After building work cleans  
**01925 266834**  
because you're worth it!

**CLEANING SERVICES**

**SIMPLY THE BEST CARPET CLEAN YOU WILL EVER** have. Cleaners UK Ltd. Est 23 yrs. Have your carpets & sofas beautifully deep cleaned leaving them fresh smelling & colour restored. Latest & best methods. Dry/steam. Professional, reliable & affordable. For more info call **Neil Riley on 01925 264989/07831 336060** [www.cleaners-uk.net](http://www.cleaners-uk.net)

**COMPUTERS**

**Having Trouble With Your Computer?**  
Running too slow?  
Want to upgrade... go wireless?  
Call for experienced engineer  
**Tel: 07974 448 165 or 01925 751 546**

**DELIVERY SERVICES**

**FURNITURE FERRY LIGHT REMOVALS.** Collections arranged from Ikea, Costco and other stores, garden centres, auctions etc. You choose, you buy, I deliver - SIMPLE. Reliable, inexpensive service. **Tel: Matt 07970 178 333 or 01942 732768. www.furnitureferry.co.uk**

**ELECTRICAL CONTRACTORS**

**PAUL LEWIS ELECTRICAL SERVICES.** For extra sockets/lights, main board upgrades to full rewires, no job too large or small. No call out fee. All work guaranteed. **Tel 01925 758337 or 07966 386806.** Est 24 years.

**EVERGREEN ELECTRICAL CONTRACTING.** NICEIC approved contractor. For lights and sockets to rewires, fuse-box upgrades. Qualified electrician. All work is to the latest IEE wiring regulations. No job too small. Most major credit and debit cards accepted. **Tel: David on 01925 724219 / 07971 407022.**

**TRUST PROPERTY ELECTRICAL SERVICES.** NICEIC Part P Approved Contractor. All Electrical work undertaken. Inspection & Testing & PAT Testing. All work certified & guaranteed. **Call Tim on 07754409906 or 01925 601055**

**EQUESTRIAN**

**LYMM RIDING SCHOOL.** Learn to ride with friendly atmosphere, group lessons or private. Horses/ponies well schooled. Lessons from £10, we offer tests with pony club cert, please ring for more details. Training for pony club. **Rebecca Bennett RegAI. 01925 750435. Mob 07778 866006.**

**EQUESTRIAN SUPPLIES & ANIMAL FEEDS**

**STABLES SADDLERY.** EST. 1964. Good stock of all equestrian supplies and animal feeds. Lots of interesting and unusual equine and canine collectables. **Tel: Barbara Williams on Lymm 752762.**

**FIRES & FIRE SURROUNDS**

**Quality Fireplaces at Affordable Prices**  
**WARRINGTON FIRE SURROUNDS**



**Fires, Fireplaces, Marble Best Prices**

**Quality Value Service Guaranteed**  
**01925 417731**  
[www.warrington-fires.co.uk](http://www.warrington-fires.co.uk)  
**8 Lovely Lane, Warrington**  
*(follow signs for hospital)*

**FOR SALE**

**TWO ELECTRIC MOBILITY SCOOTERS.** One 12 months old, only used three times. One two years old, never used. **Call 079 80 415 450.**

**GARDENING SERVICES**

**A F GARDEN SERVICES**  
REGULAR MAINTENANCE  
TURFING, SOFT LANDSCAPING  
CLEARANCES, POWER WASHING  
HEDGE PRUNING  
**07796 818 686**  
**0161 928 1722**  
[www.afgardenservices.co.uk](http://www.afgardenservices.co.uk)

**Beechwood Industries Ltd**  
Garden Maintenance  
Lawn Care  
Landscape Design  
Construction  
Paving  
Tree Surgery  
Free Assessment  
Free Consultation  
Contact us on:  
**07749 253 308**  
**01925 860544**  
[www.beechwoodindustries.co.uk](http://www.beechwoodindustries.co.uk)

**DUTTONS MOWERWORLD**  
Your local garden machinery specialist  
SALES • SERVICE • SPARES • HIRE  
**Tel: 01925 740217**  
The South, Dorebury, Warrington WA4 4AJ  
[www.duttonsmowerworld.co.uk](http://www.duttonsmowerworld.co.uk)

**FOUR SEASONS GARDEN SHOP.** Excellent selection of perennials, shrubs, bedding, hanging baskets and much more! Excellent quality and even better prices! Free parking! Near Northwich CW8 2EB. **Call 07792313460**

**J C SLAVIN**  
Landscapes & Garden Maintenance  
Flagging • Driveways • Tree/Hedge Pruning  
Garden Clearance • Fencing • Landscaping  
**01925 756 839**  
**Mob: 07599 747 373**

**JDS**  
LANDSCAPE & GENERAL BUILDING SERVICES  
Garden Design • Driveways  
Patios • Garden Walls • Fencing  
Decking • Resin Bond Driveways  
See website for examples  
**Tel: 01925 754883 Mob: 07515 907735**  
[www.jdscreate.com](http://www.jdscreate.com)

**Would you like peace of mind on your gas and electricity prices? Join the Club!**

Our unique 'Triple Value' guarantee:

- For your gas, we guarantee our prices will always be cheaper than British Gas, whenever you live in the UK.
- For your electricity, we guarantee our prices will always be cheaper than the prices charged by the regional electricity supplier for the area where you live.
- And for your complete peace of mind we guarantee our prices will always remain competitive compared with the cheapest standard tariffs available from the 'Big 4' suppliers.

For full details, contact: **0800 955 5247**

And with no minimum contract, it's risk-free.

Single bill for all your utilities  
Award-winning customer service  
Value that's unbeatable  
Easy to switch

THE UTILITY WAREHOUSE



**CLASSIFIED**

**Call 0800 955 5247 to advertise**

**GARDENING**

**LAWN DRAINAGE AND SOIL AERATION.** No trenches, no drainpipes, no digging, no repairs, no hassle. If this interests you **Contact Bob Harper 01925 266852 or 07952 608701.** (19/11)

**M J NEEDHAM LANDSCAPES** Award winning with over 15 years experience. All aspects of landscaping, specialist in bespoke construction. Qualified design service available. **Contact 01925 825 645 or 07888 730 383** (19/11)

**NEED HELP IN YOUR GARDEN?**  
All types of garden services from only £10

Professional, reliable service with 20 years experience

Call Richard  
07802 512263 or 01925 750418  
www.randrtreeservices.com (19/11)

**SIMPLY GARDENS CONSULTANCY** offers maintenance and design advice; maintenance schedules; planting plans; expert plant selection; on-site training. Regular or occasional maintenance can be arranged. **Call Graham on 01925 766873 or email gard.cott@btinternet.com** (19/12)

**GATES**

**Village Gates**  
SPECIAL OFFERS NOW ON  
Manufacturers and installers of quality timber gates  
villagegates.co.uk  
01925 766629 or  
Mob 07588 457145  
Cherwell Road, Culham WA3 3SH (17/11)

**HANDYMAN**

**Handyman Services**  
Home, Office & Garden  
Gutter Cleaning, Repairs & Replacement  
Welding Repairs & Fabrication  
Fascias, Soffits & Windows  
Patio & Driveway Cleaning  
All Garden Work, Flaggng, Fencing & Turfing  
Interior & Exterior Painting  
Plumbing & General DIY  
You Name It - No Job Too Small!  
Tel Neil: 01925 757905  
Mob: 07813 201850  
handymanserviceslymm@hotmail.co.uk (11/11)

**HANDYMANchester.uk.com**  
Odd jobs in and around the house  
Transport • Maintenance  
Handyman • Cleaning  
No Job Too Small...  
Free Quotes  
Tel: 07784570381  
07784570382  
E-mail: info@handymanchester.uk.com (17/11)

**HAIR & BEAUTY**

**PROFESSIONAL MOBILE** hairstylist, creative cutting, colour/correction, including foiled highlights. **Tel: Lorraine 01925 755441 / Mob 0786 7910805.** (19/11)

**MOBILE BEAUTY THERAPIST PHOEBE** ELIZABETH, Facials, Manicures, Pedicures, Aromatherapy Massages, Waxing, Pamper Parties, all in the comfort of your home **Tel 07932 990 031, visit www.PhoebeElizabeth.co.uk** (18/12)

**HYPNOTHERAPY**

**MICHAEL MAHONEY** clinical hypnotherapist for IBS, Stress, Anxiety and many other problems. Medical Research project experience, BUPA Service Provider. **For FREE information sheet please email TimelineServices@aol.com or ring 01925-658322 www.healthyaudio.com** (6/1)

**IRONING SERVICES**

**Carol's Ironing services**  
NEXT DAY PICKUP & DELIVERY SERVICE  
Next to Rushgreen Service Station, Lymm  
Tel: 01925 767945  
Mob: 07979 948197 (17/11)

**KITCHENS**

**LYMM KITCHEN & BATHROOM PROFESSIONAL INSTALLATION.** Ceramic wall & floor tiling. For free estimates and advice contact **Rob Evans on 01925 752623 business or 07763 770408 mobile.** Est 2002. Local references provided (19/11)

**LOCKSMITH**

**CHESHIRE LOCKSMITHS LTD** UPVC Door Specialist. Non Destructive Entry Service. Free Quotations. Lymm Based Business. **Contact Tony 07774 805 588.** (14/12)

**JEWELLERY**

**evans & co**  
JEWELLERS & COLLECTORS  
**Jewellery Workshop**  
39 London Rd, Stockton Heath, Warrington, WA4 6SG  
Quality repair, remounting, design work and setting finished to a high standard.  
Loose certificated diamonds and gemstones supplied.  
Stockists of fine contemporary British Swiss and German jewellery.  
Tel: 01925 269292 (11/11)

**WE BUY ALL GOLD & SILVER ITEMS.** Best prices paid at Knutsford's busiest jewellers established 1980. **John Rees Jewellers, 91 King Street, Knutsford 01565 653 009.** (12/11)

**JOINERY**

**SPM JOINERY**, 25 years experience. All aspects of joinery, garage conversions and extensions. Good rates, quality work and free estimates. **Call 01925 754950 or Mob 07920 837852** (18/11)

**OPTICIANS**

**ADCOTT OPTICIANS.** State of the Art opticians in the heart of Lymm Village. Comprehensive sight tests and a wide choice of spectacles tailored to you, whatever your budget. **01925 757075** (11/11)

**PAINTING & DECORATING**

**ANTHONY MASON PAINTER AND** decorator Over 25 years experience. Neat, clean, reliable service. All aspects including papering, paint finishes, colour advice, signs and furniture painting. **Tel. Tony Mason: 07962532811.** (18/11)

**BENJAMINS PAINTERS AND DECORATORS.** 20 years professional experience in commercial and domestic decorating, wallpapering, coving, interior and exterior work. **Telephone 07837 452514 or 01925 755198.** (11/12)

**N & K DECORATING SERVICES,** High Class Professional Decorators, Paper Hanging Specialist, Internal and External works undertaken, Lymm Based Company, Free Quotations. **Call 01925 759936 or 07783 068377.** (14/12)

**KJM PAINTERS QUALIFIED PAINTERS AND** decorators with over 25 years experience in all aspects of interior and exterior work. **Contact us on mob 07738 556 807 tel 01925 810428** (18/11)

**PAYROLL**

**WHY TRY TO BE A PAYE EXPERT?** Watkinson Black can provide a cost effective payroll service, releasing you to concentrate on your business. **For further details please phone: 01925 413210 or e-mail: info@warringtonaccountants.co.uk** (6/1)

**PAVING**

**IMPRINTED CONCRETE** - driveways, patios, paths, weed resistant, any colour, any pattern. 23 years experience. **For free quote telephone 01925 418429, mobile 0781 0770221, www.cheshireimprinting.co.uk** (17/11)

**PEST CONTROL**

**ATLAS FOR PEST CONTROL** - Rodents, fleas, bedbugs, all pests eradicated. Domestic and commercial. Fixed prices. Prompt service. Special offer - wasps nest removal £39. Your friendly local independent. **07999 487 925 / 01925 445 222 www.atlas4u.co.uk** (18/11)

**PHOTOGRAPHER**

**BRENDA GREEN ABIPP.** Qualified professional photographer for People, Environmental Portraits, Weddings, PR, Special Occasions. Established 30 years. websites. **www.brenda-green.co.uk www.brendagreen@demon.co.uk Tel.01925 753580.** (15/12)

**PIANO TUITION**

**PIANO/KEYBOARD TUITION IN YOUR OWN** home. Experienced open minded tutor. All musical tastes catered for, including pop/rock. Flexible informal approach. Beginners esp. welcome. All ages catered for. **Call Tony Hopkins (Dip ABRSM) 0161 973 0312 or mobile 07591 696388.** (18/11/11)

**PIANO LESSONS** - learn with a patient, fun and qualified teacher. B.Mus(RNCM), fifteen years experience + member of the European Piano Teachers' Association. All levels, ages, styles + theory / aural training: **01925 756669.** (16/12)

**PICTURE FRAMING**

**EDGAR ART & FRAMING**, 19b The Cross Lymm. Picture framing, original art, jewellery, gifts and greetings cards. (Turn right at The Terrace Brasserie & Cafe and right again at the far end). **Tel 01925 754700.** (10/12/11)

**PLASTERING**

**B.E.A. PLASTERING OF LYMM**  
Full rooms plastered • Skimming  
Bonding • Stud walls built  
All repair work large or small  
Tyroleeaning/Rendering  
Call David anytime on  
01925 753966 or 07786 245068  
www.beaplastering.co.uk  
Member of the Guild of Master Craftsmen (19/11)

**LYMM PLASTERING**  
Time served Tradesman  
Clean and reliable  
Fully insured  
All areas covered  
No job too small  
Brian Gaffney  
Tel: 07967 087034 (anytime) (11/11)

**PLUMBING**

**PB PLUMBING.** All domestic and commercial work. Fitted bathrooms and tiling. Small jobs welcome. Free quotes. Fully insured. C&G qualified. Gas Safe Registered **Call 0161 928 3253 or 07821 554867 or Freephone 0800 824 7747 or visit www.pbplumbing.co.uk** (18/11)

**Plumbflow Ltd**  
Plumbing and Heating Services  
All plumbing & gas installation/repairs  
boiler replacement/servicing  
bathrooms  
Call today for a FREE QUOTATION  
01925 468003  
www.plumbflow.com (6/1)

**RE-UPHOLSTERY**

**TRADITIONAL** and modern re-upholstery. Dining chairs, headboards, 3-piece suites etc. Customer's own fabric welcome. **Tel: Orchard Soft Furnishings 756388.** (12/12)

**TAXI / PRIVATE HIRE SERVICE**

**Frazer's of Lymm**  
Private Hire Service • Good local rates  
Reliable friendly service • up to five seater  
Airport • Station Schools • Business or pleasure for OAPs  
**Contact Nigel on 01925 754426 or Mob 07812 674822** (12/12)

**LARRY'S CARS.** Airport transfers and private hire. All UK airports covered. Over 10 years experience in the Lymm area. **Call 01925 755060. Mob 07989 342179 or email anthony.grace@btconnect.com** (18/11)

**TREE SURGERY**

**R & R Tree Services**  
Tree Surgery • Pruning  
Hedges • Ground Clearance  
Professional Service, Fully Insured  
Call Richard Jennings  
07802 512263 or 01925 750418  
www.randrtreeservices.com (11/11)

**TUTORS**

**CHESHIRE TUTORIALS** offers tuition. Primary to 'A' level. Tutors especially primary maths, science and English welcome. **Tel: 01925 758296.** (13/12)

**FRENCH OR SPANISH TUITION** for conversation, exam preparation or business. Learn a new language, improve your language skills or prepare for your GCSE or 'A' Level exams. **Contact: Suzanne on 01925 759597 or 07790 965250.**(19/11)

**TV - SATELLITE**

**AERIALS 2000** of Lymm. No job too small. All work guaranteed. Aerials and satellites supplied and fitted. Sky subscriptions available. OAP reductions. Sky Digital / On Digital. 7 days a week. **Tel: 01925 753427. Mobile: 07712 632315.** (11/12/11)

**WINDOWS & GLAZING**

**EAVES REPAIR AND RENEW SASH CORDS AGED** and disabled grab rails, hand rails, walk in showers and alterations to suit all your mobility needs. To receive an estimate please contact Roy on **07850 511 898.** (18/11)

**NEIL COPELAND WINDOWS & Conservatories Ltd.** Specialist in uPVC double glazing windows, doors, porches, conservatories, also fascias and guttering. FENSA registered. All work guaranteed. **Tel: 01925 756138 / 07961 361550.** (12/12)

**SP GLAZING** for all your glazing requirements, double glazed units including failed and misted units, broken windows, mirror fixing. Kite marked to B/S. Time served glazier with over 30 years experience. **For a friendly no obligation quote tel Sam Pendlebury on 01942 671859. Mob 07919 660296.** (10/11)

**MOTORING SERVICES**

**PARKVIEW CAR SALES**  
We buy and sell  
QUALITY CARS  
Best price paid  
Telephone Peter on  
01925 575737 /  
07957 545479  
23 Podgate Lane  
Podgate, Warrington  
Cheshire, WA1 3RS (6/1)



# Banner & Co

Independent Residential Sales and Letting Agent



Proud to support Lymm May Queen



Get on the property ladder this Summer  
Call for a free valuation

Sales • Lettings • Mortgages

01925 753636 [www.bannerandco.com](http://www.bannerandco.com)

Please note that if you have already instructed another agent, we would advise you to check any agreement you may have to ensure you are not liable for more than one commission by instructing us as your agent