

# Lymm Life

**FREE EVERY MONTH**

January 2011  
Issue: 142



Take a look!

**Banner & Co**

Independent Residential Sales  
and Letting Agents

See our main advert  
on the back page  
for details

01925 753636

**Saturday  
Appointments  
Now  
Available**

[www.gavinismydentist.com](http://www.gavinismydentist.com)

Gavin Laidlaw | Dental Solutions

T: 01925 75 65 65

**HANDYMAN SERVICES**

**HOME, OFFICE &  
GARDEN**

*Also Start and End of  
Tenancy Cleaning Service*

Call NEIL on:

(01925) 757905  
07813201850

Call today for a FREE quote

LYMM BASED

## Lymm Dickensian Picture Special

Centre Pages



**LYMM  
PARISH  
COUNCIL**

Approved by Lymm Parish  
Council as the official  
magazine for Lymm

**need family  
law advice?**

call your local  
legal experts

free legal clinic  
mondays 5pm-7pm

**forshaw  
claires  
daly**

01925 604713  
[www.fclaw.co.uk](http://www.fclaw.co.uk)

**Regular news updates at [www.lymmmlife.co.uk](http://www.lymmmlife.co.uk)**



**Editor**

Gary Skentelbery

**Production**

Paul Walker

**Business Manager**

Tony Record

**Advertising**Freephone  
0800 955 5247**Editorial**

01925 623630

**Email**

info@lymmmlife.co.uk

**Websites**www.culchethlife.com  
www.frodshamlife.co.uk  
www.lymmmlife.co.uk  
www.warrington.tv  
www.warrington-  
worldwide.co.uk**Address**New Media Centre  
Old Road Warrington  
WA4 1ATLymm Life is published monthly  
by Orbit News Ltd.The contents of this magazine  
are fully protected by copyright  
and nothing may be reprinted  
or reproduced without prior  
permission of the publishers.The publishers are not liable for  
any statement made or opinion  
expressed by third parties in this  
publication.

Printed by TwentyFourSeven

# Editor's Comment



CONGRATUALATIONS to all the volunteers who have helped transform the fortunes of Lymm Youth and Community Centre.

With more than 300 people a week now making use of the facility with a variety of activities spanning the generations it really has been a great success story.

Of course there will be those out there who would say it shouldn't be left to well meaning volunteers to run such a facility.

At one time the old youth centre had a full-time youth worker and a team of assistants employed by the borough council to help co-ordinate activities.

But this luxury has long gone - one

of many council cut backs, which started a long time before the latest round of cuts and efficiency savings we keep hearing about.

## Honourable

I would hope now that having washed their hands of the facility, the powers that be that own the land the building stands on, do the honourable thing and ensure those who have dedicated their time to setting up a great community facility, remain in control of their own destiny for many more years to come.

To the dedicated team of volunteers who have worked tirelessly to provide the village with a community facility

we can all be proud of - I salute you.

You are the people that make our village the unique place it is.

While there will be tough times for many during the coming months as cuts get deeper and deeper, the spirit of our community volunteers will ensure Lymm continues to shine like a beacon.

*Finally I would like to take this opportunity of wishing all our readers and advertisers a happy, healthy and hopefully prosperous New Year.*

**Have you got a story? Send your news items and pictures to  
info@lymmmlife.co.uk or phone 01925 623630**

## R + N STANHOPE

### Coal and Log Supplies

Best Quality Coal  
Smokeless Fuel  
Logs Supplied in Bags and Bulk  
Peat Bricks  
**Open 7 Days**

Broomeedge Farm  
Burford Lane, Lymm WA13 0SE

**Tel/Fax: 752830**

**Tried countless diets that don't work?**

Do you want to retrain your eating habits, stop the cravings, lose weight and maintain it?

Our "Kick Start to Weight Loss" Program uses Hypnotherapy and EFT to help you achieve your goal, naturally and healthily

Please call to find out more  
**Tel: 01925 730123**

www.cheshirenaturalhealth.co.uk  
Cheshire Natural Health, Beehive House, Tarporley Road, Stretton, Warrington

# Call in the professionals!

from as little as  
**£14**  
(inc VAT)

www.greenthumb.co.uk

**GreenThumb's professional treatments ensure your lawn looks lush, green and healthy. With prices starting from £14 per treatment, you can have a beautiful lawn for less than the cost of doing it yourself, and without the hassle!**

**Call your local branch today for a FREE lawn analysis and no obligation quote on...**

**01925 210669**

**GreenThumb**  
LAWN TREATMENT SERVICE

**www.greenthumb.co.uk**



# Victoria restores an ancient link with Lymm

**THEY came with William the Conqueror and for three and-a-half centuries their home was Lymm Hall.**

When their estates were sold in 1846, they extended to some 564 acres, together with the Hall, two pubs - The Golden Fleece and the Spread Eagle - 18 cottages, four farms, a cornmill, a slaughter house, a blacksmith's and a wheelwright's shop.

They were the Domvilles, a proud family of Norman origin whose history has been linked with Cheshire - and Lymm in particular - ever since William defeated Harold at Hastings in 1066 and changed the course of British history.

Now a new Domville is restoring the family's links with Lymm and visiting the village every fortnight - Victoria, a 25-year-old legal executive from Ashton-under-Lyne.

Victoria has always been fascinated by her family's history and loved Lymm.

She and her boyfriend, 27-year-old Nicholas Wright, visit every two weeks to

attend services at St Mary's Church, where they plan to marry in the summer of 2012.

Victoria said: "Lymm is a beautiful village and St Mary's is a beautiful church with many connections with the Domville family.

"I have always wanted to marry in Lymm because of the family connections and, fortunately, Nick is happy to go along with this.

"We can trace the line right back to William the Conqueror and have done a lot of research into the family. Since starting to attend the church we have made quite a few friends who are really pleased that a Domville is coming back to Lymm to get married."

Nick said: "This means a great deal to Victoria and I couldn't think of a nicer place for the wedding."



## Club to close after 30 years

A LYMM club that formed almost 30 years ago is closing because of lack of membership.

The Churches Together-run Wednesday Afternoon Group (previously known as the housebound club) was formed in 1971 to provide activities for elderly people.

Father Michael Burgess, vicar of St Peter's Church, Oughtlington, said: "Unfortunately numbers have fallen, especially during the past six months. It is also difficult to get drivers and people to help with refreshments.

"With this and rising costs, we felt it was sensible to disband the group."

He said there were many other groups in Lymm catering for elderly people. The club previously had up to 30 members, but is now down to about 10.

Its last meeting was the Christmas Party at Lymm United Reform Church.

## Sophies Soft Furnishings

**Custom made curtains,  
cushions, roman blinds etc**

*Choose from our range of fabrics  
or supply your own*

For free home visit or advice ring

**Anne on 01925 754446**

[www.sophiessoftfurnishings.co.uk](http://www.sophiessoftfurnishings.co.uk)

**3 Holly Bank, Cherry Lane, Lymm**

## Whites Sports Warrington Market

1901 - 2001 - 100 YEARS OF EXCELLENCE

*Specialists in:* Darts, Bowls,  
Snooker, Air Guns, Walking Sticks,  
Rugby, Cricket, Football,  
Warrington Town Replica Jerseys  
On Sale Now

**GIFT VOUCHERS AVAILABLE**

Telephone/Fax:

**01925 631531**



**Our fees are frozen**  
**Just 0.5% commission**  
**until the end of January!**

For a chat about your property needs call us on

**01925 759042**

or pop into 24 The Cross, Lymm

You can email us, [info@egertonsestates.com](mailto:info@egertonsestates.com)  
or visit our new website, [www.egertonsestates.com](http://www.egertonsestates.com)

**Our lettings department is now open too!**

**We look forward to hearing from you**

\*Sole Agency only. If you have already instructed another Estate Agent  
you must check your terms and conditions to avoid paying 2 fees.

## Rosebank Naturegarten, Pepper St, Lymm

a dream come true for you and your child.



- Home from home
- Extensive grounds
- Outside learning days
- Early Years/flexible sessions
- Full Day Care
- Children from 2½ years

Did you always want to build dens, explore, do woodwork and gardening?

...make sure your child has a head start and a childhood to sing about with a setting that gives them real space to develop, learn and play.



Our new Scandinavian Log Cabin is the natural choice for your child with its custom design and outside areas.

Most of all we really do cater for children's individual needs with all play being led or directed by qualified teachers.

*'The diverse curriculum offers opportunities for children to develop their skills and find their strengths' (OFSTED)*

**Up to 15 hours per week may be FREE using  
Early Education Grants for 3 and 4 year olds.**

We can also take babies and toddlers at The Rosebank Centre, our other Pepper Street nursery, which focuses on their specific needs.

**Phone Sadie Hopley on 758959 to come and explore**



# What's On

in Lymm

in association with  
LYMM PARISH COUNCIL



## January 10

### LYMM HISTORY SOCIETY

Village Hall, Pepper Street, 8pm  
"The Genesis of Freemasonry in Lymm and Warrington"  
Dr David Harrison

## January 11

LYMM PARISH COUNCIL  
Lymm Parish Hall, 7.30pm

### LYMM LIONS GROUP

Meet: Bridgewater Club, Lymm  
1st and 3rd Tuesdays of the month. 8pm  
Contact: 0845 833 5729

LYMM THURSDAY EVENING BRIDGE CLUB  
Lymm Village Hall every Thursday 7pm

### MAPLE LODGE ART GROUP

Meet each Wednesday 9.30am - 12.30pm  
Maple Lodge Guide HQ, Pepper St, Lymm  
Details: 01925 755126

### ROTARY CLUB OF LYMM

Meet every Wednesday at Statham Lodge Hotel  
7.15pm for 7.30pm  
Contact the secretary 01925 650189

### LOVING HANDS

Knitting for charity at Lymm Methodist Church,  
2nd and 4th Thursday each month.  
1.30pm - 3pm. Details: 01925 823614.

### MARKET LUNCHES

Eagle Brow Methodist Church  
3rd Thursday in the month  
Light lunches 12 noon till 2pm  
All proceeds to Opening Doors Charity, Warrington

### LYMM SCOTTISH COUNTRY DANCE CLUB

St Mary's Church Hall  
Second and fourth Fridays (Sept - May) 7.30pm  
Details: 753853

### LYMM BAPTIST CHURCH DROP LUNCH

Higher Lane, Mondays (during term time).  
12 noon to 1.15pm. £2.50

### LYMM JUBILEE GARDENING CLUB

Meet Third Wednesday of the month  
Lymm Baptist Church, Higher Lane. 7.30pm  
Visitors welcome. £2 includes tea and cake

### LYMM FLORAL ART GROUP

Lymm Village Hall  
Third Monday of the month (except August) at 7.30pm

Nonprofit making community organisations who  
would like to feature in the  
"What's On Column"

should contact Lymm Life on

01925 631592

# Where are they now?

**A RECENT appeal by the 3rd Lymm Scout Group for memories or photographs of Scouting activities in the village over the last 65 years has resulted in a mystery.**

Two photographs, which appear to have been taken at a Remembrance Parade some 50 or 60 years ago have been discovered.

But none of the current Scout leaders can recognise any of the Cubs or Scouts pictured.

They are now asking *Lymm Life* readers if they can help identify any of the former Scouts on the pictures and suggest what year the pictures might have been taken.

Scout Leaders propose to include the pictures in a potted history of the 3rd Lymm Scouts to mark its 65th anniversary year.

The group is currently trying to raise its profile throughout the village and seeking new leaders to ensure the group keeps going.

They will shortly be submitting proposals for a brand new Scout and Guide headquarters on the land they own in Pepper Street.

Fundraising has been going on for 35 years and about one third of the total needed has been raised.

Group Scout Leader Ray Banton said: "We will shortly be appealing for all the help we can get in the form of grants, donations, building materials, professional and DIY support, etc."

"We are calling on anyone

who has fond memories of the happy times they spent in their youth while members of the 3rd Lymm Cubs and Scouts, to ask if they can help us in any way to achieve our goal, which is to completely demolish our present buildings and erect a brand new "purpose built" Scout & Guide HQ ready for use by September 2012 - and hopefully serve the youth and community of Lymm and district for at least another 65 years."

Anyone who wants to help should email [gsl@3rdlymm Scouts.org.uk](mailto:gsl@3rdlymm Scouts.org.uk) or phone 07831 271 847.



# Cotebrook House

**Happy New Year**  
from all of us at  
**Cotebrook House**

Respite care available for those  
with physical disabilities.

Also places available in our Day  
Centre where we offer many  
activities including art, pottery,  
music and yoga.



Please contact us if you would like to visit our home  
**Opposite Lymm High School**  
Oughtrington Lane, Lymm WA13 0QY Tel: 01925 752583

The Complete Kitchen & Bathroom Service

# Village Designs

We design and install all types of kitchens  
and bathrooms. Our comprehensive service  
includes all trades:

Lighting • Tiling • Flooring • Decorating etc

**One local company from start to finish**

Visit: [www.villagedesigns.co.uk](http://www.villagedesigns.co.uk) or  
Ring Jeremy on 07810 421243

<p>Kids Planet - Beament O'Leary Street Warrington Cheshire WA2 7RQ</p> <p>01925 630 879</p> <p>Open 07:30 - 18:00</p>	<p>... A WORLD OF DIFFERENCE</p> <p>We offer the world as seen through the eyes of a child. We give the highest standard of day care and education creating a unique home for home for our children.</p> <ul style="list-style-type: none"> <li>• Flexible opening times</li> <li>• Experienced and enthusiastic staff</li> <li>• Ultra secure environment with CCTV</li> <li>• Healthy nutritious menu</li> <li>• Indoor and Outdoor play areas</li> <li>• Excellent Ofsted Reports</li> </ul> <p>01925 759 220</p> <p>Open 07:00 - 19:00</p> <p><a href="http://www.kidsplanetdaynurseries.co.uk">www.kidsplanetdaynurseries.co.uk</a></p>	<p>Kids Planet - Warrington Ebenezer Chapel Ebenezer Place Leigh Street, Warrington Cheshire WA1 1UL</p> <p>01925 417 350</p> <p>Open 07:00 - 19:00</p>
<p>Kids Planet - Lymm 29 Eagle Brow Lymm Cheshire WA13 0NA</p> <p>01925 759 220</p> <p>Open 07:00 - 19:00</p>		<p>Kids Planet - Widnes Kingway Learning Centre Victoria Road Widnes Cheshire WA8 7QY</p> <p>0151 257 7079</p> <p>Open 07:30 - 18:00</p>

# GLASS GLASS GLASS

## LEIGH GLASS COMPANY LIMITED EST 1974

All Types of Glass Cut To Size  
Commercial and Domestic  
Double Glazing and Glazing Services  
Manufacturers and Installers  
Glass and Glazing Federation Member  
Patio Doors / Hardwood / uPVC / Table Tops / Shop Front  
Kitemarked Units Supplied  
Trade and Retail

Mirrors | Shelves | Safety Glass | Sheet Polycarbonate  
Double Glazing Units Replaced | Shower Screens | Splashbacks

**Tel: 01942 678 440 Mob: 07968 224517**  
Email: [leighglass@hotmail.co.uk](mailto:leighglass@hotmail.co.uk) 317 Wigan Road, Leigh WN7 5EL



# Welcome to a proper bank



At Handelsbanken relationship banking still lives up to its name. With all key decisions made locally by us at the branch we are able to offer a highly personal banking service that is designed to meet your individual requirements.

We provide all the main services that high street banks provide, from day-to-day transactional banking, to the more sophisticated needs of the modern business. Our Individual Banking service is designed for high net worth customers who need a bespoke

offering with easy access to their manager. Putting the needs of the customer ahead of all else lies at the heart of everything we do. We tailor our current accounts, mortgages and loans to your individual requirements.

Chris Clarke  
Karen McComb

Corporate Account Manager - Tel: 01925 575706  
Individual Banking Manager - Tel: 01925 575708

1st Floor, 760 Mandarin Court  
Centre Park, Warrington, WA1 1GG  
[www.handelsbanken.co.uk/warrington](http://www.handelsbanken.co.uk/warrington)

## Handelsbanken

Handelsbanken is the trading name of Svenska Handelsbanken AB (publ). Authorised by the Swedish Financial Supervisory Authority (Finansinspektionen) and authorised and subject to limited regulation by the Financial Services Authority. Details about the extent of our authorisation and regulation by the Financial Services Authority are available from us on request.

**ARCHES**  
SHOES, BAGS & ACCESSORIES

**NEW YEAR BLITZ**  
MANY ITEMS HALF PRICE OR LESS

**Bargain Shoes, Boots, Sandals, Bags & Fashion**

01925 751977  
18 Eagle Brow, Lymm  
www.archesshoesbags.co.uk



**A Happy and Healthy New Year to all our customers and their pets**



**LYMM VETERINARY SURGERY**  
www.willowsvetgroup.co.uk

10 Booths Hill Road  
Lymm WA13 0DL  
Telephone 01925 752721

**Bramble Lodge Day Nursery**  
Birth – 5 years

Good quality childcare and education in a homely environment.

Next to Lymm High School  
www.bramblelodge.co.uk

01925 757597  
36 Oughtrington Lane • Lymm



**Abbey Leys Farm Shop**

*Fresh Farm Food at its Best!*

Organic Free Range Eggs • Goose and Duck Eggs • Pickled Eggs  
Home Grown Potatoes • Fresh Fruit and Vegetables  
Farmhouse Cheshire Cheese • Butter • Fresh Milk  
Farmhouse Ice Cream and Lemon Cheese

Opening Times: 9.00am - 5.30pm Mon - Sat. Sun 10.00am - 4.00pm

**ABBAY LEYS FARMERS' MARKET**  
First Sunday each month 10am - 2pm

**Tim & Janet Harrison**  
753465  
Peacock Lane, High Legh

# Police launch fortnightly surgeries

LYMM people who have issues or complaints they want to raise with police can now do so in the village.

Regular drop-in surgeries are being organised by police in conjunction with Golden Gates Housing.

They will take place every fortnight at Lymm Library, Davies Way. (pictured right)

PCSO Daren Dennis said: "Residents are being encouraged to come along to the surgery, meet officers face-to-face and have a chat. This is the ideal opportunity to meet the local neighbourhood officers who are tackling the issues that matter to the local community."

PCSO Dennis said people could just turn up to raise any issues they had regarding the area.

He said: "We understand that some people can find it daunting speaking at community meetings - so surgeries like these are of real benefit as they are informal, on a one-to-one basis and allow us to speak to people we otherwise might not hear from."



A representative from Golden Gates will also be attending each of the surgeries.

Further details are available from PCSO Dennis on 0845 458 6372 or e-mail warrington.south.npi@cheshire.pnn.police.uk

**BYTEWYSE COMPUTERS LTD**  
THE SMARTEST CHOICE FOR SYSTEMS & SUPPORT

- Custom built PCs to meet all requirements
- Full Windows 7 supply and support
- Free home delivery and installation with up to 24 months warranty
- PC repairs and maintenance
- Remote Access Support
- Networking and PC support contracts for small or home businesses
- Call us now on 01925 759658

**www.bytewysecomputers.com**

58, PADDOCK VIEW, LABKEY LANE, THELWALL, WARRINGTON, WA4 2TF

**Thelwall Upholstery**

**FOR THE MOST COMPETITIVE RATES IN THE AREA**  
49 Knutsford Road, Grappenhall WA4 2NR  
Call Sean on: 01925 604770 or mobile: 07799 228080

*For all your upholstery needs*

**SPECIALISTS IN:**

- Re-filling Cushions • Re-springing • Full Re-upholster
- Dining Furniture • Headboards

A wide range of sample books to choose from  
All at competitive rates

**PHONE FOR YOUR FREE ESTIMATES**








## Fancy dress boost for Children in Need

LYMM High School 6th form students wore fancy dress and sold cakes and raffles tickets to help to raise funds for BBC Children In Need.

## Lymm Festival Winter Warmers!

THE Lymm Festival Winter Warmer programme continues with the return of the popular Latino Dance night on Friday January 28 at 7.00pm at Lymm Golf Club. Put on your dancing shoes and learn how to Salsa (and more!) with the experts. A welcome glass of Sangria will be served along with a selection of tapas.

Tickets are £15 and places are limited, so buy now from Helen on 0790 3727750 or directly from Lymm Golf Club.

Friday February 15 brings the Blues Night; join the six piece band Forty4 with guest harmonica player Ken Peace at the Lymm Golf Club for a fabulous evening of music, tickets £10.

The second Comedy Night of the season is on Friday February 25 at the Spread Eagle, tickets also priced at £10.

Comedians Steve Day, Dominic Elliott-Spencer, Curtis Threadgold and compere Dan Smith will be entertaining the audience.

Visit [www.lymmfestival.org.uk](http://www.lymmfestival.org.uk) for more details.



## Lymm Festival Open Evening

Wednesday 19<sup>th</sup> January 7.30pm  
Narrowboat, Golden Fleece, Lymm

Come along to meet the team and find out more about our 2011 plans, and how you could lend a hand.

We are looking for help with

• fundraising, marketing & promotion

• box office support & stewarding

• administration and general help

[www.lymmfestival.org.uk](http://www.lymmfestival.org.uk)

## Dental care with Jill Cooper BDS DPDS

...something to smile about

### Providing quality, caring, affordable dentistry

Children receive free checkups and half price private treatment, when parents are patients

Check up same as NHS	£16.50
Metal Fillings from	£39
White Fillings from	£39
Professional Tooth Whitening	£199
Crowns from	£198
Dentures from	£230
Implants placed and restored	£1200
Clear braces from	£700

Due to expansion  
we are able to  
accept new patients  
Book your check up  
NOW!

**New Year New Smile**  
Professional Teeth Whitening  
**£175**  
**January Offer!**

Tel: 01925 758616  
152 Rushgreen Road, Lymm, Cheshire WA13 9QW  
[dental-care@btconnect.com](mailto:dental-care@btconnect.com)







## Tabley House Nursing Home

Providing Excellence In Care of the Elderly

Including:

Nursing & Residential Care, Palliative Care  
Post Operative Care, Convalescence Care, Day Care,  
Respite Care, Care of the Elderly with Dementia



For further information or to arrange a viewing contact:  
Matron Karen Lynskey or Deputy Matron Liane Topham

Tabley House, Tabley Lane, Knutsford, Cheshire, WA16 0HB  
Telephone: 01565 650 888  
www.tableycare.co.uk

# Rugby club going wild about its future



Lymm Rugby Club members planting further trees.

LYMM Rugby Club is now making full use of the additional 10 acres of land which were purchased and developed after a mammoth fund-raising effort and very generous donations.

There are now four spectacular new pitches. As well as the facilities being hugely up-graded, the club's fortunes have also gone up a league on the pitch with Lymm now competing in National League 3 North, whilst remaining fully committed to their amateur status.

The club also provides opportunities for adult players at all levels of ability, for everyone wanting to participate, and most importantly, gives approximately 350 local youngsters from U 6's to U18's, the chance to enjoy and learn the game.

Ownership of this new land also brings other responsibilities and opportunities. The boundary between the club's property and the neighbouring agricultural land was planted with just over 1000 native British broad-leaved tree species. This was entirely funded through the generosity of members and friends.

Closely-planted rural hedging and woodland areas, including many oaks, were planted in 2008, and are now becoming well-established and much admired by visitors.

Sadly a very large beech tree had to be felled for safety reasons and to compensate for this loss, another major effort involving the planting of 100 trees has been completed by Lymm RFC volunteers.

The club sees itself having an important role not only in growing future generations of rugby talent, but also as a custodian of the precious environment in the Lymm Dam Conservation Area. The planting will contribute to biodiversity and support local wildlife habitats.

There are plans to cultivate suitable woodland and meadowland wild flowers around the area in the future. The club is hoping that these developments will bring pleasure to the local community as well as its' members and will be offering a guided walk in the spring for people who would like to see the new wild areas as they continue to grow, or who have ideas to share about this natural environment.

**PREMIER SALE**  
**+NO VAT INCREASE**  
ON JAN/FEB ORDERS

Over 60 exquisite kitchens on display

From £5,000 to £10,000+

FREE Survey

3D Walk Through Plans

Bring your sizes for us on the spot quotation

*Buy Direct*

**Raddon Court Warehouse**

## Warrington's Only Bespoke Kitchen Company

**DESIGNED & HAND BUILT FOR YOU! - EST. OVER 40 YEARS**  
**HUNDREDS OF RETURNING CUSTOMERS CAN'T BE WRONG!**

**New Lucida Block**

**SAVING YOU up to 20%**

**New Delaware Kitchen**

**IVORY**

**Cash & Carry Kitchens**

Over 20 on display from \$499 to \$999

**SAVING YOU OVER 50%**

**Bedroom Sale Now On!**

See our New **RAUCH BEDROOMS** Just in **SCAE FRENCH COLLECTION**

**New range of BATHROOMS**

**900 Quad Shower Inc. Tray SALE PRICE £299**

**Chrome 900 Shower with pivot door inc. Tray SALE PRICE £239**

**Range of High Gloss Vanity Units SALE PRICE FROM £99**

**White High Gloss Back to Wall Unit inc. basin, cistern, seat & pan IN STOCK TO TAKEAWAY! £299**

**BUSHBOARD** the latest in Paneling.

Beautifully fitted bathrooms from start to finish

**2 YEARS INSTALLATION GUARANTEE**

**Wood Burning Fires & Stoves**

**From £259**

Over 100 in stock!

Full Installation Service by expert fitters!

**900mm Column Built In Fridge** Normal Price £339 **Now £159**

**VISIT OUR BARGAIN BASEMENT FACTORY OUTLET!**

Huge selection of wall & base units in assorted sizes from \$15 each

Oak finished glazed doors mainly large sizes - Without glass \$10 each or with leaded glass doors \$15-\$20

**DISCOUNTED PRICES FOR BULK QUANTITY**

**NEW MISTRAL SOLID SURFACE WORKTOPS**

**20% OFF**

Choice of colours

**OVER 500 TOP NAME WORKTOPS IN STOCK!**

**AXIGM EUROPAL smartstone**

**EUROLITE BREAKFAST BARS**

Available in 1.5m & 2m

From **\$59.00**

**1.5m & 2m**

**Replacement doors & handles**

**SAVE OVER 20%**

**01925 633 291**

Fax: 01925 417 585

**Public and Trade Welcome**

The Old Tannery Building, Manor Ind Estate  
Lower Wash Lane Warrington WA4 1PL  
Off Grange Avenue, Latchford, Next to AT5.

**www.raddoncourt.com**

**OPEN 7 DAYS:**

Mon-Fri 9am-5.30pm

Sat 9am-5.30pm

Sun 10.30am-4.30pm

Closed 24hrs for 24hrs, 24hrs for 24hrs, 24hrs for 24hrs

**RADDON COURT**

WARRINGTON

**WARRINGTON**



With an increase in sales, we currently have clients waiting to purchase. Ridgeway Residential is the right choice to sell your property quickly and efficiently.

**Wishing you a Happy New Year from Ridgeway Residential and the team!**  
**Please call for your free valuation on your property to put your house on the market for the New Year!**

## FOR SALE



### 17 Rushes Meadow, Lymm

A large modern detached property only a short drive to Lymm Village. The property comprises of entrance hall, lounge with double doors, dining room, family room, snug, downstairs W/C, large breakfast kitchen, utility, conservatory, 5 beds, 3 baths, Gardens to the front and rear. Parking for 3 cars.

**£599,950**



### 24 Chaise Meadow, Lymm

A beautifully appointed five bedroom property designed and arranged over three floors comprises of fitted kitchen, downstairs w/c, five bedrooms, family bathroom and benefits from beautiful gardens and integral garage. Price includes all furniture. Viewing Recommended.

**£435,000**



### 30 Quayside Mews, Lymm

Well presented mews property overlooking the Bridgewater canal. The property comprises of an entrance hall, utility, bedroom 4/study, shower room, good sized living/dining room, breakfast kitchen, 3 bedrooms, 2 bathrooms, garage, walking distance of Lymm village. Viewing Recommended

**£304,995**



### 10a Reddish Lane, Lymm

A delightful well-presented semi-detached property in quite location the property comprises spacious lounge, fully fitted kitchen, two bedrooms, bathroom, parking, rear garden, gas central heating, sought after location. Viewing Recommended.

**£184,950**



### 7 The Poplars, Lymm

A period property with stylish contemporary living, comprises a large living room, dining room, breakfast kitchen, cloak room/ WC, 4 good bedrooms (en-suite shower room to the master) and family bathroom with walk in shower. Available immediately with no chain. Viewing Recommended.

**£450,000**



### Mersey View Farm, Lymm

A spacious, fully modernised farm house in a semi-rural location. This well presented property briefly comprises of lounge, dining room, playroom, conservatory and fully fitted kitchen, five bedrooms and family bathroom. Front & rear gardens, single garage and driveway. Viewing Recommended.

**£399,995**



### 29 Bollin Drive, Lymm

A spacious extended semi-detached property. Briefly comprising of an entrance hall, lounge, dining room, study, good sized breakfast kitchen, 3 bedrooms, bathroom with shower above bath, gardens to front, side and rear. Single garage and off road parking. Viewing Recommended

**£249,950**



### 1 Oulton Court, Lymm

Ridgeway Residential are pleased to offer For Sale this one bedroom ground floor retirement apartment for the over 55's. The apartment, which is situated in the Oulton Court complex off Knutsford Road in Grappenhall, is within a short distance of all local shops. Viewing Recommended.

**£78,995**

**TO LET**

### 6 Agden Hall Farm, Agden

2 Bedroom Barn Conversion, unfurnished. Available immediately  
**£950pcm**

### 120 Albany Road, Lymm

3 Bedroom Dorma Bungalow, unfurnished. Available 17/01/11  
**£725pcm**

### 1 Temple House, Glazebrook

4 Bedroom Duplex Apartment, unfurnished. Available immediately  
**£795pcm**

### 7 Waterbridge Court, Lymm

2 Bedroom Flat, fully furnished. Available immediately  
**£595pcm**

**TO LET**

**Due to the high demand in Rentals we require To Let properties in all prices. Call today, we offer competitive fees!**

19 The Cross Lymm Cheshire WA13 0HR T. 01925 756931 E. sales@ridgewayresidential.co.uk



# Students serve up a treat



Members of the PTA being served their meal in the new look restaurant.

**STUDENTS** at Lymm High School served up a treat for members of the PTA by cooking a special dinner as a thank you for helping raise funds to refurbish a room at the school to create a restaurant.

Food was served by B Tech National Diploma in Hospitality students in the Sixth Form.

At the special opening night the students laid on a lavish three-course meal for members of the PTA, who raised money to provide the restaurant.

Head of catering Linda McLeish said: "It is our way of saying thank you to the PTA. The restaurant is to open to the public one evening a week."



Phil Woollacott (left) and Ollie Clayton plating up.

## BROTHERSTON

*I Fix Problems!*

Electrical - Plumbing - Audio Visual - Joinery  
Bathroom Problems - Kitchen Problems

Call Steven Brotherston on

**07818 636 112**

Email: [steve@ston.co.uk](mailto:steve@ston.co.uk)



## Lions support outing

LYMM and District Lions Club donated £ 250.00 towards the Oughtington Community Centre Day Care Christmas outing at the Barn Owl pub.

Lymm Lion Ken Scully presents the cheque to Joyce Pennington, outing organiser.

## Grant rejected

THE Low Carbon Lymm group has been refused a grant from Lymm Parish Council to help towards the cost of promotional material.

Cllr Sheila Woodyatt said that many of the activities proposed by Low Carbon Lymm were already being undertaken by various Government Departments, while Cllr Joe Griffiths said that the Low Carbon Lymm website was good and did not need £300 being spent to update it.

## A little less leafy!

LYMM will be a little less leafy as a result of approvals given by the borough council's planning department.

Planning officers have approved applications for the removal of a Horse Chestnut tree in New Road and a Hornbeam tree - together with crown thinning of a Beech tree in Maltmans Road.

They also approved crown thinning and reduction of two Copper Beech trees in Burford Lane and crown thinning of a Lime tree in Limefield Avenue.

All the trees involved were either in Conservation Areas or were the subject of Tree Preservations Orders.



**B.A.S.**  
Bespoke Architectural Structures Ltd

Transform your living space or work place with specialist glazing made to the highest standard. Family based business manufacturing, supplying and installing glazing systems to the domestic and commercial market specialising in sliding folding doors. Call us now for a **FREE** no obligation quotation.

**Best quality and service assured!**



[www.b-a-s.co.uk](http://www.b-a-s.co.uk)  
Tel: **01928 579957**  
Unit 3, Sycamore Court, Manor Park, Runcorn. WA7 1RS





**P.E.T.S. ANIMAL HOTEL**  
Setting New Standards in Animal Care

- Hotel style living for your pets
- State of the art grooming salon
- Behaviour and training management
- Reliable dog walking and home care visits
- Unique, purpose-built indoor and outdoor Doggy Day Creche
- Pick up and delivery service

Viewings welcome  
To arrange a tour please ring Fran Jennings on  
**07792 756 545 or 01925 750418**  
27 Burford Lane, Lymm, Cheshire WA13 0SH  
[www.petsanimalhotel.co.uk](http://www.petsanimalhotel.co.uk)



WEB DESIGN, DEVELOPMENT & PRINT

Delivering creative web and print solutions since 1999, Carpe Diem have developed strong working relationships with clients of all sizes.

UKTV, ASICS, Onitsuka Tiger, Transform Medical Group, Otelo, The Energy Ombudsman, Halle Orchestra, URBS

T: 01925 299 842  
F: 0871 434 5371  
E: [info@cd-inc.co.uk](mailto:info@cd-inc.co.uk)  
[www.carpe-diem.co.uk](http://www.carpe-diem.co.uk)

**Website Development**  
**E-Commerce**  
**Branding**  
**Print**  
**SEO / PPC / Marketing**  
**SMS / MMS / Email Campaigns**  
**Hosting**  
**DVD / Video Production**  
**Product Photography**

60 High Street  
Newton-Le-Willows  
WA12 9SH



# Rejected: the plan that would remove an eyesore

**A LYMM housing plan that would have removed a long-standing eyesore, improved wildlife habitats and caused no harm to the Green Belt has been thrown out by planners.**

Sole reason for rejecting the proposal for one detached house at the rear of Mill Lane, Heatley, was that it would add unnecessarily to the borough's surplus of housing land.

Officers admitted there were very special circumstances to allow the development in the Green Belt.

But they still recommended refusal -

and the borough's planning committee agreed.

The scheme involved demolishing a derelict industrial building and replacing a builder's yard with a small paddock.

A near neighbour supported the scheme and said local residents had, for 15 years, had to endure three

derelict buildings on the site which "ruined the landscape" and attracted petty crime and vermin.

Borough councillors Sheila Woodyatt and Bob Barr also supported the scheme.

Officers accepted a new dwelling could be introduced without causing significant harm to nearby homes or the free flow of traffic.

Replacing the builder's yard with a paddock would improve the potential for wildlife.

They did not consider the new house would have any material impact on the openness of the Green Belt.

But they added: "Other harm would be caused by the proposal as it would add unnecessarily to the surplus availability of housing land and the application is considered to be unacceptable for this reason."



## Sign of the times!

MEMBERS of Lymm parish Council have been told by highway chiefs that directional signs in the village can not include sponsors logos.

Warrington Borough Council advised the parish council that the Traffic Signs Regulations and General Directions 2002 does not permit the inclusion of trade names or logos on direction signs.

An approved signage scheme had been designed for the Lymm area which would include signage to both the Davies Way and Pepper Street car parks via the A 56.

It is proposed to implement the scheme when funding becomes available.

Cllr Bob Barr said he couldn't understand why pedestrian signage from Lymm Dam to the Village Centre could not include a sponsor's logo.

Members of the parish council

agreed to ask the borough if sponsors logos could be included in pedestrian signs to help fund the project.

**For ALL your plumbing requirements**

**ROBERT KETTLE  
PLUMBING & HEATING  
SERVICES**

For a fast, local service  
No job too small • Competitive rates  
Free estimates • Senior citizens discounts

**Home: 01925 756685  
Mobile: 07789514087**



**oven**  
oven valeting service

[oven.co.uk](http://oven.co.uk)

...punctuality, pride, courtesy...

- Range & Aga Specialists
- Ovens & Hobs
- Extractor Hoods
- Microwave Ovens
- Traditional Stoves

LET US HELP - PHONE NOW

**01925  
453377**

the UK's favourite oven cleaning specialists

**Sale Starts**  
Tuesday 4th January

**UP TO 50% OFF**

**Bridal & Lingerie**

**puure**♥

www.puure.com 10 Eagle Brow, Lymm, Cheshire WA13 0LN Tel: 01925 556673





# Lymm Dicken



**SBPT**  
SB PREMIER TRAINING  
sbpremiertraining.co.uk

Want to lose those extra pounds, increase fitness or just feel better in everyday life?

*Men's Fitness Club*  
and  
*Women's Fitness Club*  
with  
Steven Bartle

Just £5 per session

Steven Bartle is an Advanced Personal Trainer with a unique background as a Royal Marine Commando

Classes in Lymm and local areas  
Maximum 30 people

To secure a place call Steven on 07815 583147

Statham Lodge Hotel	
<p><i>January</i></p> <p><b>Tribute Party Nights</b> Friday 8th Neil Diamond Saturday 15th The Blues Brothers</p> <p>3 Course Dinner, Entertainment &amp; Late Bar £24.95 p.p. Party Night &amp; Accommodation £45 p.p.</p>	<p><i>March</i></p> <p><b>Murder Mystery Evening</b> Friday 11th March "What's Your Poison?"</p> <p>Pre-dinner Drink, 3 Course Dinner &amp; Entertainment £33.00 p.p. Murder Mystery Evening &amp; Accommodation £55.00 p.p.</p>
<p>For enquiries &amp; bookings please contact Reception on 01925 752204</p> <p>Warrington Rd, Lymm, Cheshire, WA13 9BP T: 01925 752204 W: www.stathamlodge.com</p>	



**Truly personalised lenses**  
with Eyecode An Essilor technology.

Providing lenses that are **5x more optically precise**, whatever your gaze direction.

Using eyecoders dynamic 3D eye measurement technology we can use up to 20 differing factors to determine your spectacle lens calculations. The result is lenses that provide instant, immediate & comfortable vision without effort.

Call us now for an appointment and see and feel the eyecode difference.

**Supporting your local practice**  
adcottopticians

14a The Cross, Lymm, Cheshire, WA13 9HP  
01925 757075

eyecode  
an essilor technology

Visioffice



A juggler entertains the crowds.



Bollin Morris entertain the



Lymm Youth Club members parade the



Statham Primary School prepare for the parade.



Crazy hog catering's Ian Robinson (centre) with Steve Williams and Dave Openshaw from Lymm Roundtable.



Little Bollington School

## LYMM METALS

Buyers of all grades of scrap metal

Copper, Brass, Lead, Steel, Gold, Silver  
and High Value Metals

Specialists in Computer Scrap

**Tel: 01925 756376**

**Mobile: 07831 107525**

Waste Licence No. CMS/134 720



# Asian Picture Special



crowds.



Bulls Hitters Percussion Band.



Ravenbank Primary pupils join the parade.



Votes for Women.

**GASCOIGNE  
HALMAN**

THE AREA'S LEADING INDEPENDENT  
ESTATE AGENCY

Newly Refurbished Shop at  
6 The Cross  
Lymm, WA13 0HP  
**01925 758345**  
lymm@gascoigne-halman.co.uk

**Ree Chic**

Frecks | Casual Wear  
Shoes | Bags | Jewellery  
Men's Formal Hire

17 The Cross, Lymm, Cheshire  
Tel: 01925 756683



rough the village.

For a larger selection  
of pictures visit  
[www.lymmmlife.co.uk](http://www.lymmmlife.co.uk)



Roundtables Steve Griffiths and Dave Openshaw.



ol.

**Lymm Twin Town Society**  
Twinned with Meung s/Laine since 1968

Social events for all ages interested  
in French language and culture

Annual Exchange - 1-5 Jun 2011  
Would you like to host a French family?

Other 2011 Events:  
Mardi Gras - March  
Supper evening & speaker - April  
Kids Treasure Hunt - May  
Summer BBQ - 19 June

Enquiries Tel: 758361 or visit  
[www.lymmtowntownsociety.co.uk](http://www.lymmtowntownsociety.co.uk)

**WILLIAM H. LILL + Co.**

Your local solicitor  
specialising in:-

- Conveyancing
- Wills & Probate
- Accident & Personal Injuries
- Divorce & Family Law

A friendly service for  
all your legal needs

Telephone: 753170 / 755668  
9 The Cross, Lymm WA13 0NY

**Jo Jingles is Here!**

Fun Music, Singing & Movement Classes  
for children aged 3 months to 5 years

Develop your child's

- Social Skills
- Confidence
- Co-ordination
- Language
- Listening Skills
- Imagination

Children's Parties & Nursery Sessions also available!

Introductory Offers  
3 sessions for £10 OR babies under 6mths go FREE

Classes available at Lymm Rugby Club on Wednesday  
mornings and NEW baby class starting from 3 months  
For details call Jacqui on 01925 269136 / 07762 336012  
[jacquelinelamb\\_1@hotmail.com](mailto:jacquelinelamb_1@hotmail.com)  
[www.jojingles.com/southmanchester](http://www.jojingles.com/southmanchester)

Trattoria  
**BACI**



18 The Cross, Lymm.  
Tel: 756067

**BibA**  
Boutique

**New Stock  
Arriving Daily**

mina CUSH VICKY MARTIN

Footwear by: RAVEL LACUZZO

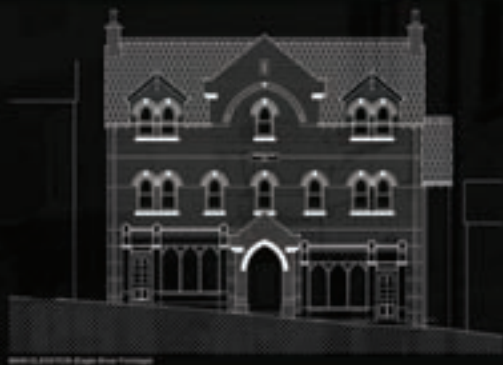
Monday-Saturday 10am to 5.30pm  
LATE NIGHT Thursday 7pm Sunday by Appointment

Tel: 01925 757508  
Chaise Meadow, Heatley Mere, Lymm WA13 9EL



# TO LET OFFICE SUITES

High quality, air-conditioned  
office suites to let  
from 516 sq/ft.



**Jets**  
Where Property Moves Fast

Enquiries call or visit:  
0161 962 1234 | [www.jetsmovefast.co.uk](http://www.jetsmovefast.co.uk)

## The best Straumann Implant Centre in the UK\*

"We are delighted that we've been rated best Straumann Implant Centre in this survey, and we aim to continue to improve our high standards of treatment and care to make our patient experience even better"  
John Moorhouse, Principal dentist.

Following our recent refurbishment patients can now feel more relaxed in our fresh and modern practice. To meet patient demand, we're are pleased to welcome registered Specialist in Oral Surgery Jon Rees to our practice alongside Dr. Moorhouse, to our team.

Jon brings many years of clinical experience relating to the placement, restoration and maintenance of dental implants. Jon's biography is available on the website.

To find out more information about our services, or to make an appointment contact us at:

eagle brow dental practice and implant centre  
18 Eagle Brow, Lymm, Warrington, WA13 0LJ  
01925 759123  
[lymm@eaglebrowdentalcare.com](mailto:lymm@eaglebrowdentalcare.com)  
[www.eaglebrow.com](http://www.eaglebrow.com)

THE STRAUMANN  
**OASIS**

specialist &  
referral group



**eagle brow**  
dental practice  
& implant centre

\*Eagle Brow dental practice and implant centre scored the highest marks in the UK in an independent survey of the top Straumann Implant Practices by the Compass Health Institute.

# Spotlight on Taking a trip down

by Joe C

**EAGLE Brow has undergone a major facelift and was once part of the main thoroughfare through Lymm.**

Prior to the Warrington to Stockport Turnpike (toll) road and the Dam being built in 1824-25 the way from Warrington to Altrincham (and on to Stockport) was via Eagle Brow, or more correctly the top part from "Four Lane Ends" (mini roundabout to you!) Booths Hill. Down through the Village, up Pepper Street continuing along the Bridle Path (Sutch Lane) to Dog (now Lloyd) Bridge.

Stage Lane at Oughtrington was originally a straight connecting track from the end of Sutch lane to Warrington Lane, Agden and thence on to Altrincham.

As such Eagle Brow was an important road, borne out by the fact that the "Nag's Head" (now the children's nursery) or the original inn with the same name, which stood at the junction with Booth's Hill Road



*Compass*

Leading you to Health and Safety

**Compass Health & Safety Consultancy can help your company successfully manage its health and safety concerns, to ensure compliance with legislation and to train your staff to relevant levels.**

Compass has over 60 years experience in both an engineering and construction background, with experience in maintenance and construction management in hazardous chemical environments.

We have established an expertise in both legislative and practical requirements of health & safety.

We offer appropriate and cost effective advice for your project



Contact Brian Lambert (CMIOSH)

Office 01253 735755 | Mobile 07985 584986

[enquiries@compasshsc.co.uk](mailto:enquiries@compasshsc.co.uk) | [www.compasshsc.co.uk](http://www.compasshsc.co.uk)



# Eagle Brow own memory lane

## Griffiths

was a coaching inn.

It was always told to us as children at school that Eagle Brow was named after the Standard of the Roman Legions who were based at Chester.

Unfortunately there is no real proof that there was ever any large scale Roman occupation in Lymm, although there are two well documented discoveries of hoards of Roman coins albeit not near Eagle Brow.

There is also a reference in a Land Tax assessment of 1756 regarding "the Tavern known by the sign of the Eagle and three malt kilns."

The Spread Eagle was also used as the Village Court House and the cave in the rock face behind was used as a "lock up." John Thornhill who committed "the murder at the Rectory" in 1798 escaped from custody there only to be captured at High Legh as he tried to catch the stage to London.

Originally, there were three shops to the left of the front door of the Spread, they are now incorporated into the pub's dining area.

The Village Pound, where stray animals were "impounded" was in Eagle Brow, remnants can be seen behind Barclay's Bank. Also in the same vicinity was the Workhouse, although this was partly in Bridgewater Street.

The building, now known as "Lymm Court" was the house of Mr Thomas Gregson, baker.

He also owned the Village Mill for a while and was the leader of the Lymm Subscription Band. The house had a bakery and shop attached and when I was young, it was owned by the Collins' and they sold real bread !!

## and now .....

The site of Warburton House, Eagle Brow offered a rare opportunity to build a significant sized retail/commercial building in a prominent location in Lymm Village Conservation Area.

The delivery of such a key building in this location demanded extraordinary levels of co-operation and teamwork, design input and construction competence.

As such Charter Design maintained a close dialogue with the Local Planning Authority and paid careful attention to local vernacular design detailing as well as satisfying the clients accommodation brief and demanding building specifications.

The design and construction teams are now successfully completing an excellent building on a site where difficult site constraints such as limited access and tight storage space required careful forward planning to minimise disruption to the Village.

Charter Design have been involved from the initial stages with our developer clients through planning and building consents, the construction phase, contract management and interior design to completion, which is scheduled for early 2011.

They would like to thank their clients, Eric and Bridget Warburton, for an excellent working relationship and wish them every success with their new development and Mervyn Jones for introducing the project to us.

Design team credits: Mervyn Jones, Julie Robinson, Lee Richards, Steve West.





**Construction | Refurbishment**  
**Commercial Interiors**

- Design and Build
- Commercial and Industrial developments
- City Centre sites
- Brownfield sites
- Private sector projects
- Public sector including schools and colleges
- Conservation areas and listed buildings
- Specialised construction projects
- CHAS accredited
- Constructionline registered

**Main contractors and developers in the North West of England**

**colbre projects ltd**  
Tel: 01706 228090  
Email: info@colbreprojects.com  
www.colbreprojects.com



**charter design**

Retail | Leisure | Corporate | Housing

A. 3 Bridgewater Street, Lymm, Cheshire WA13 0AB  
E. projects@charterdesign.net

T. 01925 752225 / 01925 757414  
W. www.charterdesign.net





**SOLARFLAIR**  
the solar panel experts

**Solar Panels to provide FREE hot water.**  
**Solarflair - Your local Approved Installer.**

Microgeneration Accredited so pay back is guaranteed through the Renewable Heat Incentive Government Grant Scheme.

Free hot water to save more money and help the environment

Call today **01925 753795** or **07947 211733** for a free estimate and survey



**SOLAR TRADE ASSOCIATION**

Sunrise - The only rise in Solar Energy costs for the next 5 billion years

**REAL EARTH**

**HUGE SELECTION ALL AT TRADE PRICES**

**NO JANUARY SALES**

**NO FREE GIFTS**

**NO GIMMICKS**

**JUST THE BEST PRICES ALL YEAR ROUND**




**NATURAL STONE TILES • WOOD FLOORING**  
**BATHROOM SUITES • UNDERFLOOR HEATING**  
**FURNISHINGS • FITTING SERVICE AVAILABLE**  
**PORCELAIN TILES • INDIAN STONE PAVING**

Lymm Nursery • Rushgreen Road • Lymm • Cheshire • WA13 9PR  
T: 01925 759 607 • E: info@realearthuk.com

## Hair today - gone tomorrow!

THE top lips of members of the Lymm and District Round Table have suddenly become a bit chillier after having their charity-inspired moustaches shaved off.

Thirteen members of the Table – which organises a number of charity and community events throughout the year – have raised over £3,000 by growing moustaches throughout November as part of the popular 'Movember' campaign, more than any other Round Table in the country.

Movember is a worldwide initiative that was set up with the sole aim of raising vital funds and awareness for men's health, specifically prostate cancer.

Chairman Dave Openshaw, who had his moustache finally shaved off along with fellow members at Sweeney Todd barbers in Lymm, said: "Although it's been pretty embarrassing it's also been a great laugh seeing what styles of moustaches the lads have gone for."

"We're really grateful to everyone who has donated, but to be honest we're all glad to see the back of them – and the same goes for our wives and girlfriends!"

For more information on the Lymm and District Round Table visit [www.lymmroundtable.co.uk](http://www.lymmroundtable.co.uk) or contact Chris Stephens on 07932 573 956 or [info@lymmroundtable.co.uk](mailto:info@lymmroundtable.co.uk)



## Who will be 'woman of the year'?

A LYMM woman could be "Cheshire Woman of the Year" this year - but first someone local has to nominate someone!

Now in its 26th year, the award recognises women from all walks of life who have given considerable service to their community, achieved outstanding success personally or professionally or shown personal courage.

Up to 100 nominated women will be invited to attend the Cheshire Woman of the Year Luncheon on Wednesday April 6 when the winner will be presented with an engraved silver salver.

The Cheshire Woman of the Year award has been recognising worthy women since 1984 and has raised more than £200,000 to help children in Cheshire and Wirral.

Last year the awards raised more than £7000 for the NSPCC and money raised this year will support the charity's vital helpline services, Childline and the NSPCC Helpline to ensure that no child's cry for help goes unheard.

Last year's winner was Beryl Moss from Mid Cheshire, a community midwife and Senior Midwifery Tutor who lost her sight completely overnight. She won her award for her personal courage and for her outstanding contribution to her local community.

Anyone who wants to nominate a local woman - they must live or work or have been born in Cheshire - can be nominated. Details at [www.cheshirewomanoftheyear.co.uk](http://www.cheshirewomanoftheyear.co.uk) or call 0161 628 1209 for a nomination form. Nominations must be received by January 14.

## New blood wanted

OUGHTRINGTON Community Centre is looking to create a new board structure in the Spring and is looking for new blood to join the management committee.

The new look board, which will be run as a limited company will need a Chairman, Vice Chairman, Treasurer, Secretary, bookings secretary and a variety of other positions.

Expressions of interest are now being taken for selection to the Board to take effect from the spring of 2011.

Please contact any member of the current Board or Andrew Wilson on 01925 753098 or [wilsonlymm1961@btinternet.com](mailto:wilsonlymm1961@btinternet.com) or see [www.oughtrington.co.uk](http://www.oughtrington.co.uk)



**Friday 11th February**

Valentines Dinner Dance with a tribute to Michael Buble and other Greats. (3 course Dinner)

**£25.50 per person - No Stay**

**£128.00 per room** - Including a half bottle of champagne in room

**Monday 14th February**

Bridgewater Restaurant with live music

**3 Course Menu @**

**£22.50 per person**



Tel: 01925 752233

Whitbarrow Road, Lymm WA13 9AQ

[www.macdonaldhotels.co.uk/lymm](http://www.macdonaldhotels.co.uk/lymm)

[general.lymm@macdonald-hotels.co.uk](mailto:general.lymm@macdonald-hotels.co.uk)



THE LYMM  
HOTEL

# elmas

MEDITERRANEAN CUISINE

Tel: 01925 756049 [www.elmasrestaurant.co.uk](http://www.elmasrestaurant.co.uk)  
2 Pepper St, Lymm WA13 OJB

## New Year's Eve Set Menu 3 Courses £25

Wide range of Starters, Main Courses,  
Desserts & Coffee available



# FLAVOURS

FINE TURKISH CUISINE



## Happy New Year to all our customers

16b The Cross, Lymm, Cheshire WA13 0HU Tel: 01925 753079  
[www.flavoursuk.co.uk](http://www.flavoursuk.co.uk)



# HAPPY NEW YEAR AT THE SPREAD EAGLE



After the hectic Christmas season we all come down to earth with a bump. We offer an honest and wholesome Pie and Ale menu and also weekly specials. Great British food in a traditional pub in the centre of Lymm. Perfect. During January we will be offering VAT free dining with our special vouchers be sure to ask.

Spread Eagle, 47 Eagle Brow, Lymm, Cheshire, WA13 0AG  
Tel 01925 757467 Email [spreadeagle@jwlees.co.uk](mailto:spreadeagle@jwlees.co.uk)

Terms & Conditions: 1. One discount voucher per table will be offered. 2. VAT free dining applies to your total bill, including food and drink. 3. Each table must spend on average £10 per person.



BE YOURSELF

# the ChurchGreen

bar & restaurant

Follow us on  
Facebook & Twitter



Aiden  
Byrne



## KIDS EAT FREE

from a great children's menu  
when they are accompanied by an Adult dining from the

**A la Carte**

3 course set menu  
£35pp

OR

**Celebration Menu**

3 courses  
£28pp



## Great value Early Bird Menu

available between 12 - 3pm and 6pm - 7.30pm  
2 courses for £18.50 or 3 courses for £22.50



You're welcome to call in anytime  
for a coffee and cake or a glass of wine,  
and remember to claim your Golden Ticket

**GOLDEN  
TICKET**

Find out more about our menu's on our Award Winning website:  
[www.thechurchgreen.co.uk](http://www.thechurchgreen.co.uk)

We wish you all the best for 2011

Tel: 01925 752068 Email: [reservations@thechurchgreen.co.uk](mailto:reservations@thechurchgreen.co.uk)  
Higher Lane, Lymm WA13 0AP





Conveniently located in the centre of Lymm Village

## SPORTS INJURY & ORTHOPAEDIC CLINIC

### Physiotherapy treatments

from...  
**£30**

Call now to book an appointment...  
Telephone: 01925 752333

Our team of highly qualified chartered physiotherapists use state of the art treatments and techniques to assist in the fastest recovery.

#### COMMON INJURIES TREATED:

- Spinal Injuries + Whiplash
- Low Back & Neck Pain
- Sports Injury Assessment
- Post Op Rehabilitation
- Knee Injuries
- Shoulder Injuries
- Sprains & Strains
- Hamstring & Groin Injuries



### SKI SEASON HAS ARRIVED!

White Rooms can offer pre ski assessments and treatment for persistent injuries prior to your trip. White Rooms can also offer full assessment, medical imaging and treatment of injuries that you may pick up whilst away.



Knee Injury Treatment

from...  
**£30**

from...  
**£350**

Full Knee Injury  
Assessment + MRI Scan

#### DIRECT ACCESS TO MEDICAL IMAGING:

MRI Scan from **£299**  
Musculo-Skeletal Ultrasound Scan from **£160**  
Ultrasound Injection Therapy from **£260**

11 Henry Street, Lymm, Cheshire WA13 0LT

[www.whiteroomsltd.co.uk](http://www.whiteroomsltd.co.uk)

PHYSIOTHERAPY - SPORTS INJURY - ORTHOTICS - NUTRITION - PERSONAL TRAINING - RADIOLOGY

**PRIESTLEY**  
♦♦♦ COLLEGE ♦♦♦

## OPEN EVENING

**THURSDAY 27 JANUARY 2011**

**6pm - 8pm**

Principal's Presentation  
6.15pm & 7.15pm

SUCCESS IS INFECTIOUS  
AT PRIESTLEY

OUTSTANDING PASS RATES  
FOR 6 YEARS RUNNING

DON'T MISS  
YOUR CHANCE TO CATCH  
THE FEVER

★★★★★★★★★  
**THE INTERNATIONAL BACCALAUREATE**

Presentation  
6.45pm

APPLICATION DEADLINE  
FOR SEPTEMBER 2011 ENTRY  
15 FEBRUARY 2011

LOUSHERS LANE, WARRINGTON  
01925 415415

For the latest information  
[www.priestley.ac.uk](http://www.priestley.ac.uk)





## Motoring

# Roadside killers!

**THERE is nothing more attractive than a tree-lined road.**

But behind the leafy beauty hides an alarming statistic - one in 12 UK road deaths involves a collision with a tree.

Research by the AA has revealed that in 2009 there were 175 fatal accidents involving vehicles striking trees - eight per cent of all road deaths.

Unlike road deaths in general, which have fallen by 35 per cent since 2000, fatal tree accidents have fallen by only 18 per cent.

The unforgiving nature of collisions with trees meant that, in 2009, four times more motorists were killed after hitting a tree than were killed after crashing into a lamppost. In a sample of 10,000 car insurance claims, about 1 per cent involved collisions with trees.

In rural areas, the death rate from vehicles hitting trees runs at 12 per cent, or just over one in eight road fatal accidents along non-built-up roads.

Tree-related fatal accidents steadily increased from 214 a year in 2000 to 272 in 2006, but have fallen since. Fatal accidents with lampposts during the same period have nearly halved, from 77 in 2000 to 41 in 2009.

Andrew Howard, the AA's head of road safety, said: "Too many drivers just don't understand that trees are among the most unyielding roadside objects. Trees hit by cars often show

little or no sign of even the most severe impact.

"Consequently, trees have been the nemesis of extreme driving - hit one at speed and you and your passengers will be lucky to escape alive. Too often, when a driver speeds, makes a bad judgment and leaves the road, it is a tree that stops the vehicle in its tracks.

"In recent years, moving lampposts

back from the kerb and making signs and other man-made street furniture less 'hard' have significantly reduced casualties.

"However, trees, some with preservation orders and often immovable from the roadside, present a threat where the only defence is speed limits and road markings that try to influence driver behaviour."

## MOT changes

VEHICLES may soon not need an MOT certificate until they are four years old.

At present, a vehicle has to be tested when it becomes three years old and then re-tested annually.

But the government is considering switching to four-year-tests, with re-tests every two years thereafter.

## A new motor show



A NEW motor festival is to be launch in March, promising three unforgettable days for all-comers to indulge in the continuing love affair between the British people and the motor car.

The first British Motor Festival is to be held at the Royal Windsor Racecourse, Berkshire, on March 11-13 and will run alongside the annual British Leisure Show, which attracted more than 21,000 visitors last year.

Event managing director James Brooke (pictured) said: "The new British Motor Festival has been designed to provide visitors with entertainment, interaction, education, hospitality and a unique display of new and classic cars and motorcycles at a prestigious venue.

The Royal Windsor Racecourse provides the perfect setting for purists to enjoy their passion, at a time when manufacturers and dealers are looking to engage with new customers. It's a great value family day out, and visitors can enjoy two exciting events for the price of one!"

Features at the event include a Formula 1 simulator and a stunning display of Owners Club cars.

Headline exhibitors already confirmed for the new British Motor Festival include Rolls Royce Motor Cars Sunningdale, Morgan, Caterham, Squire Furneaux Volvo, Citroen Slough, Subaru, Isuzu, Triumph, Tesla Motors, Get On, Royal Enfield and Harley Davidson.

There is free entry for children under 16, free parking and easy access from all over the country via the M3, M25 and M4.

For more information visit [www.britishmotorfestival.com](http://www.britishmotorfestival.com)

The entry fee will also cover the British Leisure Show ensuring it will be a day out for all the family.

UNIPART  CAR CARE CENTRE

**FREE Local Pick-up  
& Drop Off Service**

 **AUTOSAFE**  
Quality Assured



# Agden Park Motors



Park Garage A56, Agden Brow, Lymm

**5 Star**

workshop facilities  
for servicing and repair

**Over 300  
tyres**

at competitive prices!

**MOT Testing**

petrol & diesel



**BODYSHOP**  
01925 752235



**AIR  
CONDITIONING  
REGAS/SERVICE**

BIG ENOUGH TO COPE... SMALL ENOUGH TO CARE!

**Contact ALLAN or GEOFF on 01925 752447**



# Shop Local

Welcome to our special feature which is aimed at encouraging our readers to support local businesses. Any local business wishing to feature in future editions please contact us on 0800 955 5247. Please mention this publication when responding to an advertiser.

nails by  
*andrea*

GELISH | ACRYLIC | BIO GEL | MINX

**NEW! GELISH COLOURS TO DAZZLE YOU!**

The miracle nail colour that is GELISH will help your nails grow long and strong and soaks off in 10 minutes leaving a healthy nail

**NEW! PROFESSIONAL SPRAY TANNING SERVICE**

Gift vouchers available for that special someone!

*call us today!*

Upstairs @ The Hair Studio, 27a The Cross, Lymm WA13 0HR

**07872 490767**



Performs like gel  
Applies like polish



Minx

**Lymm Electric & Hardware**  
EST 1974

**Electrical Goods**  
**Repairs • Rewires**  
**Alarms • Security Lights**

NICEIC approved electrical contractors

**Dyson/Vac repairs & Service**

*All work guaranteed*

**01925 755252**

12 Bridgewater Street, Lymm, Cheshire





## Cutting Edge

Sharon and her team provide quality hairdressing for both men and women in a friendly salon with easy free parking. Sharon provides gentlemen's and boys cuts through to ladies and girls hairdressing including a full range of colour treatments.

**Now selling Bed Head products**

- Full head foils inc. Cut & Finish from £59
- Bridal Hair & Party Hair from £25
- Cut & Finish from £23
- Gentleman's hair cut from £5
- Children's hair cut from £7

**Happy New Year**  
to our new and existing clients

Ring to make an appointment 01925 752735  
77 Whitesands Road Lymm WA13 9UJ



**DOUBLE CHEESEBURGER & MEDIUM FRIES**

**£2.00**

Present your voucher before placing order  
Offer valid after 10.30am until 31.03.11 only at McDonald's®

**Poplar 2000 Service Area (M6/M56), Cliffe Lane, Lymm**

**OPENING HOURS**  
Monday to Wednesday 5am until 12 Midnight  
Open 24 hours from 5am Thursday until 12 Midnight Sunday



## Want to save money?

**Join the club!**  
(over 350,000 people already have)

**I ♥ the Club**

- ✓ Guaranteed savings!
- ✓ Save 25% on your household bills
- ✓ Award-winning customer service
- ✓ Which? Best Buy - Phone and Broadband Bundles Feb 2010
- ✓ UK's cheapest line rental
- ✓ Free Global Calls\*
- ✓ Triple Value\* guarantee on gas and electricity
- ✓ Cheapest online shopping
- ✓ 1000's of High Street retail partners
- ✓ Earn CashBack on shopping and petrol

For full details contact:  
**0800 955 5247**  
New Media Centre, Old Road, Warrington WA4 1AT

**THE UTILITY WAREHOUSE**  
DISCOUNT CLUB



# Volunteers doing 'a brilliant job'

**VOLUNTEERS who are helping transform the fortunes of Lymm Youth and Community Centre have been told they are doing a 'brilliant job', by members of Lymm Parish Council.**

Local resident Neville Davies told members of the parish council he had been approached about 18 months ago to help rescue the centre and there was now a "very professional" group of volunteers to help. Limited Company Directors were in place as were Trustees of the Registered Charity.

Mr Davies said the centre operated under a Management Committee which held monthly meetings. The centre also hosted monthly 'Bridging the Gap' Socials which were well received by those attending and schools were now involved bringing young and old together.

Mr Davies said use of the centre was provided free of charge for the youth and charitable organisations and funds were raised from a monthly lottery, monthly Farmers Markets, Craft Fairs and Sunday afternoon teas. There are currently 300 people a week using the Centre and a Cinema Club will be starting soon.

He told members of the council that as demand for use of the centre grew it was intended to get plans drawn up for an extension.

He added that the centre was in regular communication with Cabinet Ministers Francis Maude, Nick Hurd and Lord Wei who had been very supportive and it was likely that it would be going forward as an example of what the Big Society is all about.

Congratulating Mr Davies on his good work Cllr Mrs Charlotte Coupe said that she was inspired by what had been achieved at the centre and said that the volunteers were "doing a brilliant job."

## Obituary



### Hilary Ravenscroft

THE funeral has taken place of Hilary Ravenscroft, aged 68, of The Farthings, Lymm, who died on October 29.

Mrs Ravenscroft had lived in Lymm for most of her life and was a retired marketing manager for De Vere Hotels.

She was also an enthusiastic fundraiser for good causes, raising money for Warrington Neonatal Unit and starting support groups throughout the North West for people bereaved by suicide.

The funeral took place at Dunham Crematorium and arrangements were by John Burrows and Sons, of Lymm.

## Reader's Letter

Please send your correspondence to:  
Lymm Life, New Media Centre, Old Road, Warrington WA4 1AT  
or email: [info@lymm.life.co.uk](mailto:info@lymm.life.co.uk)

### Great performers for the price of a take-out

Alan Williams, Lymm

IN these troubled economic times and with the evergrowing need to be conscious of one's carbon footprint what a joy it was to be able to walk out of my out front door recently and up to the United Reformed Church, pay over my £8 and listen to one of the great British pianists of this or any other generation – Malcolm Binns.

In an era where music is increasingly delivered privately via i-pods or similar it was a real pleasure to sit in silence with over a hundred others and share the experience of listening to such a masterly and beautiful performance.

There is a saying that if something looks too good to be true then it probably is! These concerts disprove that. We really do have great performers such as Malcolm Binns and the world-renowned Stephen Hough performing at our local church on a beautiful Steinway for the price of a take-out. I would encourage all music lovers to watch out for future concerts. Skip the take-out and feast on this!

### Graffiti clampdown

MEMBERS of Lymm Parish Council have called for a clamp down on acts of vandalism after hearing it would cost £400 to remove graffiti on Longbutt Lane.

Cllr Bob Barr asked that the PCSOs be requested to clamp down on anyone found applying graffiti in Lymm.

Established 1878  
**John Burrows & Sons**  
Independent Family  
**Funeral Directors**  
M. G. Tandy  
J. A. Tandy  
16 Higher Lane, Lymm  
Tel: 01925 752501



**ZUMBA®**  
fitness

#### Lymm Leisure Centre

WEDNESDAY 6.15PM & 7.30PM 2011 Classes Start  
SUNDAY 10AM January 5th

#### Bridgewater High School (Hall Drive)

TUESDAY 6.30PM  
New Class Starting January 18th 2011

ZUMBA is a Latin inspired dance fitness programme designed to burn loads of calories, you don't even realise you're exercising

**Ditch the workout, join the party!**

Contact: Melanie Jones on 07812575081  
[www.zumbacheshire.com](http://www.zumbacheshire.com) [info@zumbacheshire.com](mailto:info@zumbacheshire.com)

twentyfourseven  
design and print ltd



### Special Offers

- 500 Full Colour Digital Business Cards **£35.00**  
(Buy 1 set, Get 1 set free!)
- 100 A3 Full Colour Posters **£38.00**
- 500 A6 Full Colour Double Sided Flyers **£50.00**
- 10,000 A5 Full Colour Flyers **£248.00**  
(Pay for 1 side, Get the other printed for free!)
- 60" x 40" Full Colour Posters **£12.00**

Subject to VAT where applicable

**t. 01925 240 247 e. [info@247print.net](mailto:info@247print.net)**

a. The New Media Centre, Old Road, Warrington, WA4 1AT



## CLASSIFIED

Call 0800 955 5247 to advertise

## ACCOUNTANCY &amp; BOOKKEEPING

**APLEGATE & CO** licensed and regulated by the AAT to engage in public practice in Accountancy, Book-keeping, Payroll, VAT, Self Assessment. Tel: 01928 739996/07803 218343. 2 & 8 Collinson Court, Frodsham WA6 7PN. (08/11)

## AIR CONDITIONING

**CLIMATE CONTROL BY WARRINGTON** based 4 Seasons, for offices, shops, surgeries, schools, homes and conservatories like yours! Installed in a day guaranteed 5 years. Keeping you cool when it's hot and warm when it's not. **www.4sac.co.uk** 01925 868960 (06/10)

## BATHROOMS

**The Bathroom Refurbishment Co.**

We can create the Bathroom of your dreams  
One Warrington based Company  
One Job from start to finish  
Unique 3D virtual CAD design system  
Please visit our website  
[www.bathroomrefurbishment.co.uk](http://www.bathroomrefurbishment.co.uk)  
Please Ring Wayne  
**01925 826 828 or 07976 574 828** (06/11)

**LYMM KITCHEN & BATHROOM PROFESSIONAL INSTALLATION.** Ceramic wall & floor tiling. For free estimates and advice contact **Rob Evans** on 01925 752623 business or 07763 770408 mobile. Est 2002. Local references provided (12/11)

## BUILDING SERVICES

**BIG DIG Groundworks**

Flagging, Block Paving, Garden walls, Fencing, Patios, Drives, Foundations. For free estimates call Mob: 07934 563 266 or Tel: 0152 424 5462 [www.bigdiggroundworks.co.uk](http://www.bigdiggroundworks.co.uk) (08/11)

**BRICKLAYER AVAILABLE** for garden walls, pointing etc. Tel: 01925 755441 Mobile: 07966 491624 (05/11)

**To advertise**  
**Call FREE**  
**0800 955 5247**

## CARPETS, CURTAINS &amp; INTERIORS

**BRIDGEWATER FLOORING AND BLINDS** we supply and fit carpets, vinyls, laminates, karndean, commercial flooring and tiles. Blinds-venetian, vertical, roller and roman. Outdoor awnings, curtains, upholstery, tracks, fabrics, poles and finishing touches showroom open at agden brow. Free measure quotation service. Tel: 01925 755805. Closed Wednesdays. (12/11)

**CUSTOM-MADE** curtains and loose covers. All accessories supplied and fitted. Made-to-measure blinds. Our fabric or yours. Tel: **Orchard Soft Furnishings** 01925 756388. (15/11)

## Paul Bains Flooring Solutions Ltd

**Carpets, Wood, Vinyl, Laminates**  
**Domestic & Commercial**  
**Supplied & Fitted**

Family business covering all aspects of flooring including domestic & contract locations

Uplifting of old flooring can be arranged

Moving of furniture by arrangement

Limited disruption from start to finish

Check website for previous installations

[www.paulbainsflooringsolutionsltd.co.uk](http://www.paulbainsflooringsolutionsltd.co.uk)

**Office: 01925 758835**  
**Mobile: 07973 376224** (07/11)

## CARPET CLEANING

**A1 STAINBUSTERS:** Fully guaranteed carpet and upholstery deep dry cleaning. Clean & dry in only ONE hour. Quotes for both commercial and domestic. Contact the Local expert **John Latham** on 01925 205210 or 07765 314080 (04/11)

**SAFE CLEAN: SAFE ORGANIC CLEANING.** Specialists in cleaning all leather and fabric upholstery, rugs, carpets and curtains in situ. Ask about our new organic allergy relief system, Guardsman stain protection plans and carpet repairs. **Richard Vaal** on 0808 144 8178 (06/11)

**SIMPLY THE BEST CARPET CLEAN YOU WILL EVER** have. Cleaners UK Ltd. Est 22 yrs. Have your carpets & sofas beautifully deep cleaned leaving them fresh smelling & colour restored. Latest & best methods. Dry/steam. Professional, reliable & affordable. Call **Neil Riley** on 01925 264989/07831 336060 [www.cleaners-uk.net](http://www.cleaners-uk.net) (12/11)

## CENTRAL HEATING

**CORGI REGISTERED GAS ENGINEER.** Andy Gas of Lymm, specialist in: Boiler upgrades, servicing, repairs to all domestic heating and gas appliances. Professional service. **Tel Andy on: 07753 838129 or 01925 753712.** (03/11)

## CHILDREN'S ACTIVITIES

**TUMBLE TOTS** is the leading national physical play programme for children, classes available in Knutsford Hale & Bowden. We can be booked for private parties. Contact **Jane** on 07812-144450. [www.tumbletots.com/sale](http://www.tumbletots.com/sale) (15/11)

## CLEANING SERVICES

**arleys angels**

- Spring Clean Specialists
- Presenting your home for sale
- Moving house
- After building work cleans

**01925 266834**  
... because you're worth it!

**SIMPLY THE BEST CARPET CLEAN YOU WILL EVER** have. Cleaners UK Ltd. Est 22 yrs. Have your carpets & sofas beautifully deep cleaned leaving them fresh smelling & colour restored. Latest & best methods. Dry/steam. Professional, reliable & affordable. Call **Neil Riley** on 01925 264989/07831 336060 [www.cleaners-uk.net](http://www.cleaners-uk.net) (12/11)

## COMPUTERS

**Having Trouble With Your Computer?**  
Running too slow?  
Want to upgrade... go wireless?  
Call for experienced engineer  
Tel: 07974 448 165 or 01925 751 546 (03/11)

## COUNSELLING

**Birchbrook Counselling Service**

Discreet and confidential counselling service

Reiki healing and attunements

Emotional and Physical journey work

**Call 07951 266476** (08/11)

## DELIVERY SERVICES

**FURNITURE FERRY LIGHT REMOVALS.** Collections arranged from Ikea, Costco and other stores, garden centres, auctions etc. You choose, you buy, I deliver - SIMPLE. Reliable, inexpensive service. Tel: **Matt 07970 178 333 or 01942 732768. www.furnitureferry.co.uk** (05/11)

**TnM Couriers** - specialists in urgent UK same day deliveries, international and UK next day services available, contract work undertaken, parcels to pallets, no job too small or too big, competitive rates. Call 01925 639029. (06/11)

## DRIVEWAY &amp; PATIO

**PAVED AREAS NEED POWER WASHING?** We can transform your block paving, flags or tarmac. Super power washers also to hire. **Millington Power Cleaning** 01565 830547 or 07983 837994 (08/11)

## ELECTRICAL CONTRACTORS

**A1 ELECTRICAL SERVICES PAUL LEWIS.** For extra sockets/lights, main board upgrades to full rewires, no job too large or small. No call out fee. All work guaranteed. Tel 01925 758337 or 07966 386806. Est 23 years. (06/11)

**EVERGREEN ELECTRICAL CONTRACTING.** NICEIC approved contractor. For lights and sockets to rewires, fuse-box upgrades. Qualified electrician. All work is to the latest IEE wiring regulations. No job too small. Most major credit and debit cards accepted. Tel: **David** on 01925 724219 / 07971 407022. (06/11)

**TRUST PROPERTY ELECTRICAL SERVICES.** NICEIC Part P Approved Contractor. All Electrical work undertaken. Inspection & Testing & PAT Testing. All work certified & guaranteed. Call **Tim** on 07754409906 or 01925 601055 (03/11)

## EQUESTRIAN

**LYMM RIDING SCHOOL.** Learn to ride with friendly atmosphere, group lessons or private. Horses/ponies well schooled. Lessons from £10, we offer tests with pony club cert, please ring for more details. Training for pony club. **Rebecca Bennett** RegAl. 01925 750435. Mob 07778 866006. (12/11)

**WANTED, EXPERIENCED LADY RIDER** to help exercise and school horse during the day. Also occasional horse sitting duties. Call 01925 752520. (08/11)

## EQUESTRIAN SUPPLIES &amp; ANIMAL FEEDS

**STABLES SADDLERY.** EST. 1964. Good stock of all equestrian supplies and animal feeds. Lots of interesting and unusual equine and canine collectables. Tel: **Barbara Williams** on Lymm 752762. (02/11)

## FIRES &amp; FIRE SURROUNDS

**Quality Fireplaces at Affordable Prices**  
**WARRINGTON FIRE SURROUNDS**

Fires, Fireplaces, Marble Best Prices

Quality Value Service Guaranteed  
**01925 417731**  
[www.warrington-fires.co.uk](http://www.warrington-fires.co.uk)  
8 Lovely Lane, Warrington  
(follow signs for hospital) (06/11)

## GARDENING SERVICES

**A F GARDEN SERVICES**

REGULAR MAINTENANCE  
TURFING, SOFT LANDSCAPING  
CLEARANCES, POWER WASHING  
HEDGE PRUNING

**07796 818 686**  
**0161 928 1722**  
[www.afgardenservices.co.uk](http://www.afgardenservices.co.uk) (06/11)

**LYMM BASED**

**Beechwood Industries Ltd**

Does your garden need a complete makeover or just good management?

Free Assessment  
Free Consultation  
Landscape Design  
Construction  
Paving  
Lawn Care  
Tree Surgery  
Garden Maintenance

Contact Adam Halford on  
**07749 253 308**  
[www.beechwoodindustries.co.uk](http://www.beechwoodindustries.co.uk) (06/11)

**FOUR SEASONS GARDEN SHOP EXCELLENT** selection of perennials, shrubs, bedding, hanging baskets and much more! Excellent quality and even better prices! Free parking! Near northwich CW8 2EB. Call 07792313460 (07/11)

**J C SLAVIN**

Landscapes & Garden Maintenance

Pruning • Garden Clearance • Fencing  
Flagging • Driveways • Landscaping Designs

**01925 756 839**  
Mob: 07599 747 373 (08/11)

**Would you like the UK's best value domestic gas & electricity?**

With our unique "Triple Value" guarantee we will:

- 1) Guarantee our prices will always be cheaper than British Gas.
- 2) Guarantee our prices will always be cheaper than your regional electricity supplier.
- 3) Guarantee our prices will always remain competitive with the cheapest tariffs available from the "Big 6" suppliers.

- Easy to switch
- No minimum contract
- You keep the same pipes and meters
- You receive exactly the same gas and electricity

**THE UTILITY WAREHOUSE**

For full details: **0800 955 5247**  
New Media Centre, Old Road, Warrington. WA4 1AT



## CLASSIFIED

Call 0800 955 5247 to advertise

## GARDENING SERVICES

**LAWN DRAINAGE AND SOIL AERATION.** No trenches, no drainpipes, no digging, no repairs, no hassle. If this interests you **Contact Bob Harper 01925 266852 or 07952 608701.** (13/11)

**M J NEEDHAM LANDSCAPES** Award winning with over 15 years experience. All aspects of landscaping, specialist in bespoke construction. Qualified design service available. **Contact 01925 825 645 or 07888 730 383** (13/11)

**SIMPLY GARDENS CONSULTANCY** offers maintenance and design advice; maintenance schedules; planting plans; expert plant selection; on-site training. Regular or occasional maintenance can be arranged. **Call Graham on 01925 766873 or email gard.cott@btinternet.com** (13/11)

## HANDYMAN

### Handyman Services

Home, Office & Garden

Gutter Cleaning, Repairs & Replacement  
Welding Repairs & Fabrication  
Fascias, Soffits & Windows  
Patio & Driveway Cleaning  
All Garden Work, Flogging,  
Fencing & Turfing  
Interior & Exterior Painting  
Plumbing & General DIY  
You Name It - No Job Too Small!

**Tel Neil: 01925 757905**  
**Mob: 07813 201850**  
**handymanserviceslymm@hotmail.co.uk**

## PLASTERING

## LYMM PLASTERING

First Class Workmanship  
Quality Time served Plasterers  
All aspects of Plastering  
K Rend coloured Render  
Refurbs • New Builds  
Re-skims • Tyroleean  
Drylining  
All Insurance Work  
Fully Insured



**Tel: Brian Gaffney**  
**Office: 01925 755958**  
**Mobile: 07967 087034** (11/11)

## PLUMBING

## CL PLUMBING AND GAS SERVICES

Local honest plumber covering all aspects of plumbing and gas works. Boilers and central heating installed and repaired. Bathroom suites supplied and fitted. Cookers and fires fitted. Landlord gas safety checks. All plumbing emergencies - 24 hour call out. No job too small. **OAP Discount rates. Tel Craig 01925 819692 07851 405466 www.clplumbing.co.uk** (11/11)  
**PB PLUMBING.** All domestic and commercial work. Fitted bathrooms and tiling. Small jobs welcome. Free quotes. Fully insured. C&G qualified. Gas Safe Registered **Call 0161 928 3253 or 07821 554867 or Freephone 0800 824 7747 or visit www.pbplumbing.co.uk** (11/11)

**STEPHEN ROBERTS**  
Plumbing and heating, installations and servicing, boiler breakdowns, system upgrades, free estimates  
**CORGI REGISTERED**  
**Tel: 07830 331231** (14/11)

### Plumbflow Ltd

Plumbing and Heating Services

All plumbing & gas installation/repairs  
boiler replacement/servicing  
bathrooms  
Call today for a FREE QUOTATION  
**01925 468003**  
**www.plumbflow.com** (6/11)

## PIANO TUITION

**VISITING 1-2-1 PIANO/KEYBOARD TUITION.** Experienced open minded tutor. 100% exam pass rate. (60%+ merit/distinction). Flexible informal approach. First 5 lessons half price till January 2011. **Call Tony Hopkins (Dip ABRSM) 0161 973 0312 or mobile 07591 696388.** (12/11)

## RE-UPHOLSTERY

**TRADITIONAL** and modern re-upholstery. Dining chairs, headboards, 3-piece suites etc. Customer's own fabric welcome. **Tel: Orchard Soft Furnishings 756388.** (12/11)

## ROOFING

**J & S ROOFING.** Roofing repairs & complete replacement. Built up flat roofing, Slating, Tiling, Fascias, soffits and gutting Free quotes, references available. **Tel: 0781 488 0246 & 0788 639 0444.** (13/11)

## TAXI / PRIVATE HIRE SERVICE

## Frazer's of Lymm

Private Hire Service • Good local rates  
Reliable friendly service • up to five seater  
Airport • Station Schools • Business  
or pleasure for OAPs

**Contact Nigel on 01925 754426 or Mob 07812 674822** (12/11)

## JEWELLERY

**evans & co**  
JEWELLERY & SILVERSMITHS

### Jewellery Workshop

39 London Rd, Stockton Heath, Warrington, WA4 6SG

Quality repair, remounting, design work and setting finished to a high standard.

Loose certificated diamonds and gemstones supplied.

Stockists of fine contemporary British Swiss and German jewellery.

**Tel: 01925 269292** (11/11)

## KITCHENS

**LYMM KITCHEN & BATHROOM PROFESSIONAL INSTALLATION.** Ceramic wall & floor tiling. For free estimates and advice contact **Rob Evans on 01925 752623 business or 07763 770408 mobile.** Est 2002. Local references provided (13/11)

## LOCKSMITH

**CHESHIRE LOCKSMITHS LTD** UPVC Door Specialist. Non Destructive Entry Service. Free Quotations. Lymm Based Business. **Contact Tony 07774 805 588.** (14/11)

## OPTICIANS

**ADCOTT OPTICIANS.** State of the Art opticians in the heart of Lymm Village. Comprehensive sight tests and a wide choice of spectacles tailored to you, whatever your budget. **01925 757075** (11/11)

## PAINTING &amp; DECORATING

**N & K DECORATING SERVICES,** High Class Professional Decorators, Paper Hanging Specialist, Internal and External works undertaken, Lymm Based Company, Free Quotations. **Call 01925 759936 or 07783 068377.** (14/11)

## PAYROLL

**WHY TRY TO BE A PAYE EXPERT?** Watkinson Black can provide a cost effective payroll service, releasing you to concentrate on your business. For further details please phone: **01925 413210** or e-mail: **info@warringtonaccountants.co.uk** (6/11)

## PHOTOGRAPHER

**BRENDA GREEN ABIPP.** Qualified professional photographer for People, Environmental Portraits, Weddings, PR, Special Occasions. Established 30 years. websites. **www.brenda.green.co.uk www.brendagreen@demon.co.uk Tel. 01925 753580.** (15/11)

## PICTURE FRAMING

**EDGAR ART & FRAMING,** 19b The Cross Lymm. Picture framing, original art, jewellery, gifts and greetings cards. (Turn right at The Terrace Brasserie & Cafe and right again at the far end). **Tel 01925 754700.** (16/11)

**PICTURE FRAMING SERVICE,** also original paintings, prints, and giftware. Giclee Printing Service for artists. **The Brentwood Gallery, 106 - 108 London Road, Stockton Heath, Warrington WA4 5LE. Tel: 01925 601473 www.brentwoodgallery.co.uk** (11/11)

## PLASTERING

### B.E.A. PLASTERING OF LYMM

Full rooms plastered • Skimming  
Bonding • Stud walls built  
All repair work large or small  
Tyroleean/Rendering

Call David anytime on  
**01925 753966 or 07786 245068**

**www.beaplastering.co.uk**  
Member of the Guild of Master Craftsmen (13/11)

## TAXI / PRIVATE HIRE SERVICE

**LARRY'S CARS.** Airport transfers and private hire. All UK airports covered. Over 10 years experience in the Lymm area. **Call 01925 755060. Mob 07989 342179 or email anthony.grace@btconnect.com** (13/11)

## NEED A TAXI?

Any Distance Short or Long  
Nights Out, Airports, Stations  
Any Occasion, Low Fares

**www.Lymmtransfers.co.uk**  
**Tel Chris 0796 007 0304** (13/11)

## Silverfox Private Hire

Black, discreet 5-seat Chrysler Voyager for all occasions: Airport Transfers, Corporate Travel, Contract Work.

**Any destination. Professional, reliable service Tel: 07964 194150** (13/11)

## TREE SURGERY

**R & R Tree Services**  
Tree Surgery • Pruning  
Hedges • Turfing • Fencing  
Flogging  
All jobs no matter how big or small  
Richard Jennings  
**M: 07802 512263**  
**T: 01925 750418**  
**www.randrtreeservices.co.uk** (13/11)

## TUTORS

**CHESHIRE TUTORIALS** offers tuition. Primary to 'A' level. Tutors especially primary maths, science and English welcome. **Tel: 01925 758296.** (13/11)  
**FRENCH OR SPANISH TUITION** for conversation, exam preparation or business. Learn a new language, improve your language skills or prepare for your GCSE or 'A' Level exams. **Contact: Suzanne on 01925 759597 or 07790 965250.** (13/11)

## TV - SATELLITE

**AERIALS 2000** of Lymm. No job too small. All work guaranteed. Aerials and satellites supplied and fitted. Sky subscriptions available. OAP reductions. Sky Digital / On Digital. 7 days a week. **Tel: 01925 753427. Mobile: 07712 632315.** (12/11)

## WINDOWS &amp; GLAZING

**NEIL COPELAND WINDOWS & Conservatories Ltd.** Specialist in uPVC double glazing windows, doors, porches, conservatories, also fascias and guttering. FENSA registered. All work guaranteed. **Tel: 01925 756138 / 07961 361550.** (12/11)

**SP GLAZING** for all your glazing requirements, double glazed units including failed and misted units, broken windows, mirror fixing. Kite marked to B/S. Time served glazier with over 30 years experience. **For a friendly no obligation quote tel Sam Pendlebury on 01942 671859. Mob 07919 660296.** (14/11)

## MOTORING SERVICES

## CAR SALES

**PARKVIEW CAR SALES**

**We buy and sell QUALITY CARS**  
**Best price paid**  
**Telephone Peter on 01925 575737 / 07957 545479**  
23 Podgate Lane  
Podgate, Warrington  
Cheshire, WA1 3RS (6/11)

## HEALTH &amp; BEAUTY

**Body Treats**  
in the comfort of your own home  
**Emma Baker**  
Mobile Holistic & Beauty Therapist  
**Call: 07891 809 805** (13/11)

## HEALTH CARE

**THE WHITE ROOMS PHYSIOTHERAPY** and Wellness Centre. Rapid expert assessment and treatment of all musculoskeletal injuries. Spinal Specialists! Discover and tackle the cause of your pain! **11, Henry Street, Lymm, Cheshire WA13-0LT. Tel: 01925 752333 Mob: 07903 822700.** (12/11)

## HYPNOTHERAPY

**MICHAEL MAHONEY** clinical hypnotherapist for IBS, Stress, Anxiety and many other problems. Medical Research project experience, BUPA Service Provider. **For FREE information sheet please email TimelineServices@aol.com or ring 01925-658322 www.healthyaudio.com** (6/11)

## IRONING SERVICES

**Carol's Ironing services**  
NEXT DAY PICKUP & DELIVERY SERVICE  
Lymm  
**Tel: 01925 767945**  
**Mob: 07979 948197** (17/11)



# Banner & Co

Independent Residential Sales and Letting Agent



## PROPERTIES ARE MOVING!

Let us show you how we sell / rent our properties.

- As a privately owned company we have the ultimate incentive to sell/rent your property for as much as possible in the best possible timescale
- Open 7 days a week, accompanied viewings including late nights
- Advertising both locally, nationally and via the web
- Free rental guarantee

## JOIN IN OUR SUCCESS

If you are considering moving now or in the future, or would simply like some advice regarding your property please contact Linda or Andy



01925 753636  
[www.bannerandco.com](http://www.bannerandco.com)

*Please note that if you have already instructed another agent, we would advise you to check any agreement you may have to ensure you are not liable for more than one commission by instructing us as your agent*

