

**Lymm**

# Life

**FREE EVERY MONTH**

February 2011

Issue: 143



Take a look!

## Mums on the run!

Page 10



**LYMM  
PARISH  
COUNCIL**  
Approved by Lymm Parish  
Council as the official  
magazine for Lymm

**Banner & Co**

Independent Residential Sales  
and Letting Agent

See our main advert  
on the back page  
for details

01925 753636

**Saturday  
Appointments  
Now  
Available**

[www.gavinismydentist.com](http://www.gavinismydentist.com)

Claydon | Dentalsolutions

T:01925 75 65 65

**Slimming World**



**TUESDAY**  
Lymm Youth &  
Community Centre  
9.30am and 7pm  
Tel: Christine  
07851 946117

0844 897 8000

**SAVE  
£5**

\*first time membership until 31 April 2011

Slimming World

[www.slimmingworld.co.uk](http://www.slimmingworld.co.uk)

**need family  
law advice?**

call your local  
legal experts

free local clinic  
mondays 5pm-7pm

**Alderson's  
Chartered  
Solicitors**

01925 604713  
[www.abrlaw.co.uk](http://www.abrlaw.co.uk)

**Regular news updates at [www.lymmmlife.co.uk](http://www.lymmmlife.co.uk)**

**Editor**

Gary Skentelbery

**Production**

Paul Walker

**Business Manager**

Tony Record

**Advertising**Freephone  
0800 955 5247**Editorial**

01925 623630

**Email**

info@lymmmlife.co.uk

**Websites**www.culchethlife.com  
www.frodshamlife.co.uk  
www.lymmmlife.co.uk  
www.warrington.tv  
www.warrington-  
worldwide.co.uk**Address**New Media Centre  
Old Road Warrington  
WA4 1AT*Lymm Life is published monthly  
by Orbit News Ltd.**The contents of this magazine  
are fully protected by copyright  
and nothing may be reprinted  
or reproduced without prior  
permission of the publishers.**The publishers are not liable for  
any statement made or opinion  
expressed by third parties in this  
publication.**Printed by TwentyFourSeven*

# Editor's Comment



## **WE are blessed with many unsung heroes in our community - none more so than the hard-working volunteers who help run the Oughtrington Luncheon Club.**

Every year I am made to feel very welcome at the club's annual festive get together by Joyce Penlington and her team (pictured right), who rely on donations to keep this valuable community service going throughout the year. Unfortunately the bad weather before Christmas saw the event postponed to the New Year - but the volunteers didn't let this dampen their spirits.

The luncheon club receives great support from Lymm Lions and is also supported by social services and Warrington dial-a-ride. It is a vital lifeline for many of our elderly

residents - and the only trip out for some members, who would otherwise be isolated with little contact with the outside world.

Like many organisations the Luncheon Club, who are based in the Oughtrington Community Association, which also relies on the efforts of volunteers to remain open, are finding it more and more difficult to find funding to keep their services going.

While there are very many worthy causes in Lymm, I do hope the Oughtrington Luncheon Club can continue its good work for many more years to come.



**Have you got a story? Send your news items and pictures to  
info@lymmmlife.co.uk or phone 01925 623630**

## **R + N STANHOPE**

### **Coal and Log Supplies**

Best Quality Coal  
Smokeless Fuel  
Logs Supplied in Bags and Bulk  
Peat Bricks  
**Open 7 Days**

**Broomeedge Farm  
Burford Lane, Lymm WA13 0SE**

**Tel/Fax: 752830**

## **Tried countless diets that don't work?**



Do you want to retrain your eating habits,  
stop the cravings, lose weight and maintain it?

Our "Kick Start to Weight Loss" Program  
uses Hypnotherapy and EFT to help you  
achieve your goal, naturally and healthily

Please call to find out more  
Tel: 01925 730123  
www.cheshirenaturalhealth.co.uk  
Cheshire Natural Health, Beehive House, Tarporley Road, Sirenton, Warrington

# Call in the professionals!



from as  
little as  
**£14**  
(inc VAT)



**GreenThumb's professional  
treatments ensure your  
lawn looks lush, green and  
healthy. With prices starting  
from £14 per treatment, you  
can have a beautiful lawn  
for less than the cost of  
doing it yourself, and  
without the hassle!**

**Call your local branch today  
for a FREE lawn analysis and  
no obligation quote on...**

# 01925 210669

**GreenThumb**  
LAWN TREATMENT SERVICE



**www.greenthumb.co.uk**

# School's fight to save Lymm link

**TWO primary schools have enlisted the support of a political heavy weight in their battle with Warrington Borough Council to save their links with Lymm High School.**

Chancellor George Osborne MP took time out of his busy schedule to add his weight to a campaign by Little Bollington and High Legh Primary Schools to retain their Partner Primary Status with Lymm High School.

Mr Osborne met with the Headteachers and Chair of Governors of both High Legh and Little Bollington C of E Primary Schools near Lymm, to listen to their concerns regarding the council's proposal to change the admission procedures to Lymm High School.

The proposal is to remove Partner Primary status with Lymm High School

from both schools which would prevent children's automatic entry to their closest, local secondary school.

As the local MP for both primary schools, Mr Osborne said he understood the strong, historical, community connection with both Lymm High School and the village of Lymm.

Little Bollington head Teacher Caroline Johnstone said: "A great deal of opposition has already been voiced by parents, staff, children and local residents and Mr Osborne has helped launch the opposition campaign by being the first signatory on the petition.

Both schools are urging parents and local residents to register their opposition to Warrington Borough Council's proposal and help both schools remain part of their community.

They are also urging them to contact David Mowatt MP for Warrington South.

The review affects primary partner schools with Lymm High School and Bridgewater High School, which are both over subscribed with pupil numbers.

### Reviewing

Ann McCormack from Warrington Borough Council said: "We are currently reviewing the partnering status of four primary schools in conjunction with Halton and Cheshire East councils.

"Both Lymm and Bridgewater High

Schools regularly oversubscribe from within their partner primary criterion, meaning that some pupils living close to these high schools, but not attending partner schools, are unable to access places at their local secondary school. This factor led us to undertake this review.

"If the proposals are approved then this would mean future applications from the primary schools in question would simply be considered under the proximity criterion."

**Picture: Mr Osborne with (L-R) High Legh chair of governors Christine Johnson and head teacher Louise Robbins, with Little Bollington head teacher Caroline Johnstone and chair of governors Christine Warr.**



## Sophies Soft Furnishings

Custom made curtains, cushions, roman blinds etc  
Choose from our range of fabrics or supply your own

For free home visit or advice ring

Anne on 01925 754446

www.sophiessoftfurnishings.co.uk

3 Holly Bank, Cherry Lane, Lymm

**Whites Sports**  
Warrington Market  
1901 - 2001 - 100 YEARS OF EXCELLENCE

Specialists in: Darts, Bowls, Snooker, Air Guns, Walking Sticks, Rugby, Cricket, Football, Warrington Town Replica Jerseys On Sale Now

**GIFT VOUCHERS AVAILABLE**  
Telephone/Fax:  
**01925 631531**

# Smart FURNISHINGS SALE NOW ON

**20% OFF ALL RUGS** SPECIAL 3 seater suite **£1965** was £2619

**35% OFF** introduce floors

**30% OFF STOCK MIRRORS & PICTURES**

**15% OFF ALL CARPET RANGES**

**25% OFF ALL BEDROOM FURNITURE** \*Bristols Bellwair stock carpets - selected colours. Pictures for illustration purposes only

**PERGO FLOORING 15% OFF** maximum order 10sqm

Smart Furnishings Chapel Lane Stockton Heath Warrington WA4 6LL Tel: 01925 267518

OPEN: Mon-Fri 9am - 5.30pm, Saturday 9am - 5pm  
www.smartfurnishings.co.uk

LIVING - DINING - SLEEPING - FLOORING - OCCASIONAL

## Rosebank Naturegarten, Pepper St, Lymm

a dream come true for you and your child.

- Home from home
- Extensive grounds
- Outside learning days
- Early Years/flexible sessions
- Full Day Care
- Children from 2 1/2 years

Did you always want to build dens, explore, do woodwork and gardening?  
...make sure your child has a head start and a childhood to sing about with a setting that gives them real space to develop, learn and play.

Our new Scandinavian Log Cabin is the natural choice for your child with its custom design and outside areas. Most of all we really do cater for children's individual needs with all play being led or directed by qualified teachers. "The diverse curriculum offers opportunities for children to develop their skills and find their strengths" (OFSTED)

**Up to 15 hours per week may be FREE using Early Education Grants for 3 and 4 year olds.**

We can also take babies and toddlers at The Rosebank Centre, our other Pepper Street nursery, which focuses on their specific needs.

Phone Sadie Hopley on 758959 to come and explore

# What's On

in Lymm

in association with LYMM PARISH COUNCIL



### February 8

LYMM PARISH COUNCIL  
Lymm Parish Hall, 7.30pm

### February 14

LYMM HISTORY SOCIETY  
Village Hall, Pepper Street, 8pm  
"Recent Archaeology in Cheshire" -  
Jill Collens (County Archaeologies)

LYMM LIONS GROUP  
Meet: Bridgewater Club, Lymm  
1st and 3rd Tuesdays of the month. 8pm  
Contact: 0845 833 5729

LYMM THURSDAY EVENING BRIDGE CLUB  
Lymm Village Hall every Thursday 7pm

MAPLE LODGE ART GROUP  
Meet each Wednesday 9.30am - 12.30pm  
Maple Lodge Guide HQ, Pepper St, Lymm  
Details: 01925 755126

ROTARY CLUB OF LYMM  
Meet every Wednesday at Statham Lodge Hotel  
7.15pm for 7.30pm  
Contact the secretary 01925 650189

LOVING HANDS  
Knitting for charity at Lymm Methodist Church,  
2nd and 4th Thursday each month.  
1.30pm - 3pm. Details: 01925 823614.

MARKET LUNCHES  
Eagle Brow Methodist Church  
3rd Thursday in the month  
Light lunches 12 noon till 2pm  
All proceeds shared between Age UK and  
Room At The Inn, Warrington

LYMM SCOTTISH COUNTRY DANCE CLUB  
St Mary's Church Hall  
Second and fourth Fridays (Sept - May) 7.30pm  
Details: 753853

LYMM BAPTIST CHURCH DROP LUNCH  
Higher Lane, Mondays (during term time).  
12 noon to 1.15pm. £2.50

LYMM JUBILEE GARDENING CLUB  
Meet Third Wednesday of the month  
Lymm Baptist Church, Higher Lane. 7.30pm  
Visitors welcome. £2 includes tea and cake

LYMM FLORAL ART GROUP  
Lymm Village Hall  
Third Monday of the month (except August) at 7.30pm

Non-profit making community organisations who  
would like to feature in the  
What's On Column

should contact Lymm Life on

01925 631592

# Healthy eating plan helps Christine lose one-and-a-half stone



**A WOMAN who lost one and a half stone after joining a slimming club is starting her own branch of the club in Lymm to help others.**

Christine Hough (pictured before, left, and after, right) says her new trim figure is thanks to Slimming World. She switched to a healthy eating plan and with support from friends at the club, stuck to it and developed her cooking skills to create healthy meals.

She said: "My family eat the same meals and we're never hungry as at

Slimming World you can eat so many tasty, filling foods in unlimited amounts. From curries and risottos to more traditional food like a Sunday roast or cottage pie, it's all allowed."

Christine joined the group in June 2009 and has now become a consultant herself and will run a group in Lymm at the Youth and Community Centre. Anyone interested in joining can contact her on 07851 946 117.



Make 2011 your year to  
**GET YOUR BEST HEALTH**  
with the New Year offer for Bioenergetic health screening

Treat Symptoms like:

- Disruptive menopause/ hormone imbalance
- Skin conditions
- Allergies/food intolerances
- Tiredness and ME
- Poor immune function
- Digestive problems and IBS
- Parasites and Candida
- Stress or sleep problems
- Migrains and pain
- ADD/ ADHD/ Autism
- Weightloss
- Low Libido and much more

Find out what vitamins you actually need and get individual eating plans

**Anneli Conreen free at 0800 007 5201 or Mob: 07545 592 764**  
for more info visit: [www.getyourbesthealth.co.uk](http://www.getyourbesthealth.co.uk)



## Cotebrook House

**Permanent and Respite care available for those with physical disabilities.**

Also places available in our Day Centre.

Valentines Party - Monday 14th February 7pm

Open Day to be held on Wednesday 11th May 2011  
More details to follow.



Please contact us if you would like to visit our home

**Opposite Lymm High School  
Oughtrington Lane, Lymm WA13 0QY Tel: 01925 752583**

Kids Planet - Beaumont  
O'Leary Street  
Warrington  
Cheshire  
WA2 7RQ  
01925 630 879  
Open 07:30 - 18:00

Kids Planet - Warrington  
Ebenezer Chapel  
Ebenezer Place  
Leigh Street, Warrington  
Cheshire WA1 1UL  
01925 417 350  
Open 07:00 - 19:00

Kids Planet - Lymm  
29 Eagle Brow  
Lymm  
Cheshire  
WA13 0NA  
01925 759 220  
Open 07:00 - 19:00

Kids Planet - Widnes  
Kingway Learning Centre  
Victoria Road  
Widnes  
Cheshire WA8 7QY  
0151 257 7079  
Open 07:30 - 18:00

**Kids Planet**  
... A WORLD OF DIFFERENCE

We offer the world as seen through the eyes of a child.  
We give the highest standard of day care and education creating a unique home for home for our children.

- Flexible opening times
- Experienced and enthusiastic staff
- Ultra secure environment with CCTV
- Healthy nutritious menus
- Indoor and Outdoor play areas
- Excellent Ofsted Reports

[www.kidsplanetdaynurseries.co.uk](http://www.kidsplanetdaynurseries.co.uk)

The Complete Kitchen & Bathroom Service

## Village Designs

We design and install all types of kitchens and bathrooms. Our comprehensive service includes all trades:

Lighting • Tiling • Flooring • Decorating etc

**One local company from start to finish**

Visit: [www.villagedesigns.co.uk](http://www.villagedesigns.co.uk) or  
Ring Jeremy on 07810 421243

## GLASS GLASS GLASS

LEIGH GLASS COMPANY LIMITED EST 1974

All Types of Glass Cut To Size

Commercial and Domestic

Double Glazing and Glazing Services

Manufacturers and Installers

Glass and Glazing Federation Member

Patio Doors / Hardwood / uPVC / Table Tops / Shop Front

Kitemarked Units Supplied

Trade and Retail

Mirrors | Shelves | Safety Glass | Sheet Polycarbonate  
Double Glazing Units Replaced | Shower Screens | Splashbacks

Tel: 01942 678 440 Mob: 07968 224517

Email: [leighglass@hotmail.co.uk](mailto:leighglass@hotmail.co.uk) 317 Wigan Road, Leigh WN7 5EL

# Welcome to a proper bank



At Handelsbanken relationship banking still lives up to its name. With all key decisions made locally by us at the branch we are able to offer a highly personal banking service that is designed to meet your individual requirements.

We provide all the main services that high street banks provide, from day-to-day transactional banking, to the more sophisticated needs of the modern business. Our Individual Banking service is designed for high net worth customers who need a bespoke

offering with easy access to their manager. Putting the needs of the customer ahead of all else lies at the heart of everything we do. We tailor our current accounts, mortgages and loans to your individual requirements.

Chris Clarke  
Karen McComb

Corporate Account Manager - Tel: 01925 575706  
Individual Banking Manager - Tel: 01925 575708

1st Floor, 760 Mandarin Court  
Centre Park, Warrington, WA1 1GG  
[www.handelsbanken.co.uk/warrington](http://www.handelsbanken.co.uk/warrington)

## Handelsbanken



**P.E.T.S. ANIMAL HOTEL**  
Setting New Standards in Animal Care

- Hotel style living for your pets
- State of the art grooming salon
- Behaviour and training management
- Reliable dog walking and home care visits
- Unique, purpose-built indoor and outdoor Doggy Day Creche
- Pick up and delivery service

Viewings welcome  
To arrange a tour please ring Fran Jennings on  
**07792 756 545 or 01925 750418**  
27 Burford Lane, Lymm, Cheshire WA13 0SH  
[www.petsanimalhotel.co.uk](http://www.petsanimalhotel.co.uk)

**£5 OFF**  
**Vaccinations**

Applies to full cat vaccination (flu, enteritis and leukaemia), dog booster and puppy and kitten full course vaccinations.

**Contact our Surgery TODAY**

Offer applies 15th January to 28th February on production of advertisement only.



**LYMM VETERINARY SURGERY**  
[www.willowsvetgroup.co.uk](http://www.willowsvetgroup.co.uk)

10 Booths Hill Road  
Lymm WA13 0DL  
Telephone  
**01925 752721**



**Bramble Lodge Day Nursery**  
Birth – 5 years

Good quality childcare and education in a homely environment.

Next to Lymm High School  
[www.bramblelodge.co.uk](http://www.bramblelodge.co.uk)

**01925 757597**  
36 Oughtrington Lane • Lymm

**Abbey Leys Farm Shop**

*Fresh Farm Food at its Best!*

Organic Free Range Eggs • Goose and Duck Eggs • Pickled Eggs  
Home Grown Potatoes • Fresh Fruit and Vegetables  
Farmhouse Cheshire Cheese • Butter • Fresh Milk  
Farmhouse Ice Cream and Lemon Cheese

Opening Times: 9.00am - 5.30pm Mon - Sat. Sun 10.00am - 4.00pm

**ABBEY LEYS FARMERS' MARKET**  
First Sunday each month 10am - 2pm

**Tim & Janet Harrison**  
**753465**  
Peacock Lane, High Legh

# Brownies seek helpers and leaders

**THE 6th Lymm Brownies are looking for helpers and leaders.**

Any adult woman aged 18-65 is welcome to apply. All the leaders at 6th Lymm Brownies have 'day jobs' too so try to run the pack time-efficiently.

Latest research shows people who volunteer are happier, healthier and are better at their main job on the day after their volunteer one! So here's a chance to improve your life in the New Year.

Commitment at Brownies would be 6pm - 7.30pm each Wednesday evening term-time only (Ravenbank timetable) and also ideally one weekend a year for Pack Holiday. 'Volunteer shares' are possible - with two volunteers doing alternate weeks.

If you are interested please phone Sue Mathews on 01925 752006.



**BYTEWYSE**  
COMPUTERS LTD  
THE SMARTEST CHOICE FOR SYSTEMS & SUPPORT

- Custom built PCs to meet all requirements
- Full Windows 7 supply and support
- Free home delivery and installation with up to 24 months warranty
- PC repairs and maintenance
- Remote Access Support
- Networking and PC support contracts for small or home businesses
- Call us now on 01925 759658

[www.bytewysecomputers.com](http://www.bytewysecomputers.com)

5B, PADDOCK VIEW, LABKEY LANE, THELWALL, WARRINGTON, WA4 2TF



**Thelwall Upholstery**

**FOR THE MOST COMPETITIVE RATES IN THE AREA**  
49 Knutsford Road, Grappenhall WA4 2NR  
Call Sean on: 01925 604770 or mobile: 07799 228080

*For all your upholstery needs*

**SPECIALISTS IN:**

- Re-filling Cushions • Re-springing • Full Re-upholster
- Dining Furniture • Headboards

A wide range of sample books to choose from  
All at competitive rates

PHONE FOR YOUR FREE ESTIMATES



## Residents win time in recycling planning battle

ANGRY residents fighting proposals for increased operating hours at a Lymm recycling plant have been given more time to gather evidence.

People living near the ADS Recycling plant in Camsley Lane, dispute the company's claim that they have been breaching planning conditions for 10 years. But neither they, nor the council, has any evidence to support their argument.

Planning chiefs have deferred a decision on the issue to give residents time to find evidence. ADS has applied for a lawful development certificate on the grounds that two planning conditions have been breached for more than 10 years and are therefore unenforceable.

They have produced signed witness statements to support their application. The conditions restrict working hours and the unloading of waste materials to a transfer building.

Cllr Graham Welborn says neighbours dispute that conditions have been constantly breached for 10 years - especially between 1992-2002 when there were few complaints about the company.

Residents say complaints re working hours have increased over the last 2-3 years as the volume of work has increased. They say there has been an increase in noise and early morning traffic.

\*The issue is due to be dealt with on January 19. Find out the result by visiting [www.lymm.life.co.uk](http://www.lymm.life.co.uk)

## Networking group supports charity

A LOCAL not-for-profit networking group said thank you to their supporters by holding a drinks event at the Spread Eagle in Lymm, raising much needed funds for The Joshua Tree charity.

The Colony Networking Group have been running evening and daytime events for almost a year and to thank their supporters and develop relationships further in a more informal setting, they laid on drinks at the local public house.

Stephanie Jones, one of the three Co-founders of the group, said, "Some of our members had started to forge some really good contacts and wanted to get together again in a more informal setting, and we responded to this. We've also been really pleased with the turn out at each event and the feedback that we've received - this was our way of saying thanks."

The co-founders asked the networkers to put forward some prizes

for a raffle on the night and the group managed to raise £97 for the charity.

The Joshua Tree charity aims to provide support and free family breaks in Cheshire for those who have a child suffering from a life-threatening illness such as cancer. To find out more about future Colony

events go to [www.colonynetworking.co.uk](http://www.colonynetworking.co.uk)

For more information about The Joshua Tree please visit [www.thejoshuatree.org.uk](http://www.thejoshuatree.org.uk) or you can follow them on Twitter @joshuatree2006. You can also follow their progress on Facebook.



**For ALL your plumbing requirements**

**ROBERT KETTLE**  
**PLUMBING & HEATING SERVICES**

For a fast, local service  
No job too small • Competitive rates  
Free estimates • Senior citizens discounts

**Home: 01925 756685**  
**Mobile: 07789514087**

**oven**  **ovenu.co.uk**

oven valeting service ...punctuality, pride, courtesy...

- Range & Aga Specialists
- Ovens & Hobs
- Extractor Hoods
- Microwave Ovens
- Traditional Stoves

LET US HELP - PHONE NOW  
**01925 453377**

*the UK's favourite oven cleaning specialists*

## Dental care with Jill Cooper BDS DPDS

...something to smile about

Providing quality, caring, affordable dentistry

Everybody at Dental Care with Jill Cooper would like to welcome our new dentist!

**Hilary Ellingham**

BDS, DPDS, MFGPD (UK) RCS Eng

'Hilary is my dentist! She has been looking after my teeth for several years now. She is a very competent and gentle dentist and I am delighted that she is joining our team at Dental Care with Jill Cooper. Hilary is a great believer in our practise ethos of high quality affordable dentistry, where the patient is put first.' *Jill Cooper*

**January Offer!**  
Professional Teeth Whitening  
£175

Tel: 01925 758616  
152 Rushgreen Road, Lymm, Cheshire WA13 9QW  
[dental-care@btconnect.com](mailto:dental-care@btconnect.com)





## Tabley House Nursing Home

Providing Excellence In Care of the Elderly

Including:

Nursing & Residential Care, Palliative Care  
Post Operative Care, Convalescence Care, Day Care,  
Respite Care, Care of the Elderly with Dementia



For further information or to arrange a viewing contact:  
Matron Karen Lynskey or Deputy Matron Liane Topham

Tabley House, Tabley Lane, Knutsford, Cheshire, WA16 0HB  
Telephone: 01565 650 888  
www.tableycare.co.uk

# Better late than never



**OUGHTRINGTON Luncheon Club saw in the New Year in style as they held their annual festive get together on 12th night.**

The event had to be delayed due to the bad weather before Christmas. Pictures show Joyce Penlington and her team of volunteers (above) and members enjoying the festive get together at Oughtrington Community Centre (below).

Joyce said a big thank you to Ken Scully and Lymm Lions for their continued support.



**20% OFF**  
All Kitchens till  
31.01.11  
(T & C's apply)

## Celebrate the New Year...

**WITH A DREAM DOORS MAKEOVER**

Start your year in style!  
With a Dream Doors kitchen, it's simple - all you have to do is change your doors and fittings.

No matter what the size or finish, we can give your kitchen the ultimate facelift and with huge savings.

**Storage options available:**  
Draw Storage, Pull-out Draws  
Pull-out Larder

12 YEARS

# DREAM DOORS®

NEW LIFE FOR OLD KITCHENS

Checkatrade.com **itv 1**  
Where reputation matters

Visit our NEW showroom today: 92 Knutsford Road, Grappenhall, Warrington, WA4 2PJ  
Call today for a FREE no-obligation quote: 01925 398804  
visit the website: [www.dreamdoorswarrington.co.uk](http://www.dreamdoorswarrington.co.uk)



With an increase in sales, we currently have clients waiting to purchase. Ridgeway Residential is the right choice to sell your property quickly and efficiently.

**Urgently Required Properties For Sale. Please call for a Free Market Appraisal Today**

**FOR SALE**

**FOR SALE**



**78 Cherry Lane, Lymm**  
Attractive period property in sought after location. The accommodation is split on three floors, ground floor, entrance hall, lounge, family room, dining room, downstairs bathroom, internal space/utility, first floor 3 beds, family bathroom, second floor 2 double bedrooms, garden and garage.  
**£459,950**



**8 Farcroft Close, Lymm**  
We are pleased to offer for sale this 4 bedroom property, which offers extensive and versatile accommodation arranged over three floors, briefly comprising of downstairs W/C, cloakroom, lounge, fantastic open-plan dining kitchen with living area, four bedrooms and three bathrooms.  
**£445,000**



**1 Longcroft Place, Lymm**  
A well presented modern detached property standing on a corner plot in the popular heatley mere development. Lounge with double doors to garden, dining kitchen, utility, W/C, 5 bedrooms, 3 bathrooms, good sized garden, garage and off road parking for 3 cars. No Chain. Viewing Recommended.  
**£419,950**



**29 Bollin Drive, Lymm**  
A spacious extended semi-detached property in a popular residential area briefly comprising of an entrance hall, lounge, dining room, study, good sized breakfast kitchen, 3 bedrooms, bathroom with shower above bath, gardens to front, side and rear. Single garage and off road parking.  
**£249,950**



**6a Pepper Street, Lymm**  
A newly built luxury apartment standing in the heart of Lymm village, communal entrance hall, hallway, lounge/diner, fitted kitchen, two bedrooms, 2 bathrooms, the apartments are fitted to a high standard and benefit from double glazing, GCH and off road parking.  
**£245,000**



**2 Woodbine Road, Lymm**  
Attractive end modern mews in popular location, entrance hall, large lounge, breakfast kitchen with door leading into garden, two double bedrooms, two bathrooms, gas central heating, enclosed garden, garage and parking. Viewing recommended.  
**£194,950**



**19 High Legh Road, Lymm**  
Well Presented Semi Detached, Three Bedrooms, Living Room, Dining Room, Kitchen, Newly Refurbished Bathroom, Front, Side, Rear Gardens, scope for further improvement, subject to any necessary planning permission. UPVC Double Glazing, Sought After Location, Viewing Recommended.  
**£184,500**



**18 Newarth Drive, Lymm**  
A top floor apartment within a short drive of Lymm village. Comprising of entrance hall, living room, kitchen with breakfast bar, double bedroom, bathroom with shower above bath. UPVC double glazed and GCH. Would make a great first time buyers property or an investment property.  
**£63,500 50% Shared Ownership**

**TO LET**

**24 Chaise Meadow, Lymm**  
5 bedroom detached house, furnished. Available Immediately  
**£1,650pcm**

**4 Warburton Close, Lymm**  
4 bedroom extended semi-detached, part-furnished/unfurnished. Available Immediately.  
**£850pcm**

**10a Reddish Lane, Lymm**  
2 bedroom semi-detached, unfurnished. Available Immediately.  
**£625pcm**

**NEW INSTRUCTION**

**6 School Drive, Lymm**  
3 bedroom mid mews property, furnished or unfurnished. Available 03/02/2011.  
**£895pcm**

**5 Thirlmere Lodge, Rectory Lane, Lymm**  
2 bedroom apartment, part-furnished. Available Immediately.  
**£695pcm**

**3 Holly Grove Court, Booths Hill Road, Lymm**  
2 bedroom apartment, unfurnished. Available 10/02/2011.  
**£575pcm**

**TO LET**

**Due to the high demand in Rentals we require To Let properties in all prices.**

19 The Cross Lymm Cheshire WA13 0HR T. 01925 756931 E. sales@ridgewayresidential.co.uk

# Mums on the run for charity

## FOUR Lymm mums are to run in this year's London Marathon to raise money for their chosen charities.

The four - who all have children at Ravenbank Primary School - say they must have hit a "mid-life crisis" as they had never done anything like it before.

But in preparation for the event they have all been training together for the last 12 months, have all completed a couple of half-marathons and recently completed a 14-mile training session.

They are Claire Wormald, 36, with three children, Emily, Olivia and Edward, Joy Parkinson, 40 with three children, Emma, Sam and Beth, Becky Rhind, 39, with three children, Abby, Poppy and Ben and Claire Steed, 37, with two children, Harvey and Archie.

The children all attend Ravenbank or local pre-schools or nurseries.

Charities to benefit will be the Juvenile Diabetes Research Foundation (JDRF), Asthma UK and Parkinsons UK.

They have set themselves a target of raising £8,000 and have already raised £4,500 through a quiz night, a stall on Dickenson Day, a car boot sale and collecting with Santa and the Rotary Club before Christmas. They are holding a cocktail party and disco at the Village Hall on February 4.

The four mums felt with 11 children between them, Juvenile Diabetes was a good cause to support while Claire's father has Parkinson's and Becki's son Ben, aged five, suffers from Asthma.

Claire said: "I went to watch the London Marathon in 2000 and got caught up in the sense of achievement and emotion of the day. Have been saying 'one day I'll do it' ever since.

Joy gave up work to spend some time with her children - at that time two, three and five - and took up running "to keep sane amidst the childcare chaos."

Becky said: "To help me get through the training I decided to raise money for Asthma UK to make it all seem worthwhile."

Claire said: "I enjoy a sporting challenge and the London Marathon will definitely be one!"

Anyone wants to help can call Claire on 07590 838030 or visit [www.virginmoneygiving.com/team/LymmMarathonLadies](http://www.virginmoneygiving.com/team/LymmMarathonLadies)



## BROTHERSTON

*I Fix Problems!*

Electrical - Plumbing - Audio Visual - Joinery  
Bathroom Problems - Kitchen Problems

Call Steven Brotherston on

**07818 636 112**

Email: [steve@ston.co.uk](mailto:steve@ston.co.uk)



## B.A.S

Bespoke Architectural Structures Ltd

Transform your living space or work place with specialist glazing made to the highest standard. Family based business manufacturing, supplying and installing glazing systems to the domestic and commercial market specialising in sliding folding doors: Call us now for a **FREE no obligation quotation.**

**Best quality and service assured!**



[www.b-a-s.co.uk](http://www.b-a-s.co.uk)  
Tel: **01928 579957**

Unit 3, Sycamore Court, Manor Park, Runcorn. WA7 1RS

rated #1  
full service digital  
design agency in  
warrington\*

**CARPE DIEM**

WEB // DESIGN // VIDEO // + MORE

+44 (0)1925 299 842 [www.carpe-diem.co.uk](http://www.carpe-diem.co.uk)

**RAR+**  
**TOP 100**  
AGENCY 2010

## LOOKING FOR A NEW HOUSE?

*How about this...*

Beech Farm Lymm Road, Thelwall, Warrington WA4 2TG  
Price £550,000

A rare opportunity to acquire a semi rural yet convenient Detached Farmhouse. The accommodation is arranged over Three floors and consists of Ent Halway, Cloakroom, Family Room, Lounge, Dining Room, Sitting Room, Kitchen, Utility Room and Five Bedrooms, master with en-suite. Externally there are gardens to all sides and a private driveway providing off road parking for several vehicles. The property has No Chain Involved and Viewing is Highly Recommended.



Lounge 6.79m x 3.69m (22'3" x 12'1")  
Family Room 3.45m x 3.03m (11'4" x 9'11")  
Sitting Room 5.09m x 3.17m (16'8" x 10'5")  
Dining Room 4.92m x 3.49m (16'2" x 11'6")  
Kitchen 3.22m x 5.13m (10'7" x 16'10")  
Utility Room 2.5m x 2.75m (8'2" x 9'0")  
Bedroom 1 4.83m x 3.03m (15'10" x 9'11")  
En-Suite Bathroom 2.65m x 1.85m (8'8" x 6'1")  
Bedroom 2 3.69m x 2.93m (12'1" x 9'8")  
Bedroom 3 5.73m (max) x 3.74m (18'9" (max) x 12'3")  
Bathroom 2.53m x 1.84m (7'9" x 6'0")  
Bedroom 4 4.39m x 3.72m (14'5" x 12'2")  
Bedroom 5 4.38m (including robes) x 3.02m (14'4" (including robes) x 9'11")



**Reeds Rains**

The Estate Agent

**WE LOVE SELLING HOUSES**

Tel: 01925 268491 London Road, Stockton Heath

[www.reedsrains.co.uk](http://www.reedsrains.co.uk)

[www.zoopla.co.uk](http://www.zoopla.co.uk)

[www.rightmove.co.uk](http://www.rightmove.co.uk)

# Puure Wedded Bliss!



ANGIE NAYLOR married DANIEL CONNELLY on Sunday, November 21, 2010, at St Peter's Church, Oughtrington, Lymm. The reception took place at Mere Court Hotel.

The bride wore an exclusive Kate Sherford gown from the collection at Puure Bridal in Lymm.

The couple honeymooned in Cuba.

Photography by Andrew Collier.

## Lymm Life Bride of the Year!

Lymm Life magazine has teamed up with Puure Bridal of Lymm and other wedding professionals to offer one lucky 'Bride to Be' the chance to win the bridal gown of her dreams and vouchers worth hundreds of pounds.

To be in with a chance of winning this exciting competition to be the *Lymm Life Bride of the Year* look out for the competition entry details in next month's issue and register your interest by calling in to see Angie Naylor at Puure Bridal on Eagle Brow in Lymm.

Love is...  
**Puure Lingerie**  
 this Valentine's Day



Gift Vouchers Available  
 Puure Lingerie  
 as seen in Vogue magazine



Exclusive Prom Collection

Order your perfect Prom dress soon

Exclusivity given to each school

Faviana | Jora | Venus

'Love' collection by Enzoani

**puure**

www.puure.com

10 Eagle Brow, Lymm, Cheshire WA13 0LN

Tel: 01925 556673

What a difference a day makes™



same day smiles™

Advanced dentistry giving you  
 implants and new teeth in one day  
 hello@samedaysmiles.co.uk





**SOLARFLAIR**  
the solar panel experts

**Solar Panels to provide FREE hot water.**  
**Solarflair - Your local Approved Installer.**

Microgeneration Accredited so pay back is guaranteed through the Renewable Heat Incentive Government Grant Scheme.

Free hot water to save more money and help the environment

Call today **01925 753795** or **07947 211733** for a free estimate and survey

**SOLAR TRADE ASSOCIATION**

*Sunrise - The only rise in Solar Energy costs for the next 5 billion years*

# Noël Arrive offers families French fun and festivity

IT was another successful 'Noël Arrive', Lymm Twin Town Society's Christmas event held in the Village Hall when the open morning event for young families welcomed over 30 Lymm families with young children to sample its French-themed Christmas fun and festivities.

Freshly made crepes were offered along with vin chaud and a Christmas kids punch to chase away the chills from the snowy winter wonderland outside. Young children enjoyed a giant 'Joyeux Noël' colouring wall, had their faces painted with the French flag, participated in games and activities with a French twist, and sang Jingle Bells (in French and English) to beckon in Père Noël. Children were then invited to visit Santa in his grotto to have their picture taken in his sleigh.

As the morning event drew to a close, existing members then arrived to continue the festivities. Again the mulled wine was flowing as members joined together to sing carols and celebrate Christmas.

Lymm has been twinned with MEUNG-SUR-LOIRE for over 40 years, which is a delightful small town about 10 miles west of Orléans in the Loire valley, an hour south of Paris. The Society organises various social events throughout the year to raise funds to help entertain the French visitors every other year. The next open social event will be Mardi Gras in March and the highlight of the 2011 calendar is the annual



exchange visit (1-5 June 2010, during school holidays). Anyone wishing to host a French family is encouraged to contact the Society as soon as possible. For membership, event and exchange enquiries, please contact Kirsty James on 01925 758361 or email [lymmtwintown@btinternet.com](mailto:lymmtwintown@btinternet.com).

## Polio collection

THE Rotary Club of Lymm have been given permission by the parish council to have a collection on The Cross on February 26 to raise money to help towards helping the eradication of polio.



**SPORTS INJURY & ORTHOPAEDIC CLINIC**

**Physiotherapy treatments** from...  
**£30**

Call now to book an appointment...  
Telephone: 01925 752333

Our team of highly qualified chartered physiotherapists use state of the art treatments and techniques to assist in the fastest recovery.

**COMMON INJURIES TREATED:**

- Spinal Injuries + Whiplash
- Low Back & Neck Pain
- Sports Injury Assessment
- Post Op Rehabilitation
- Knee Injuries
- Shoulder Injuries
- Sprains & Strains
- Hamstring & Groin Injuries

**SKI SEASON HAS ARRIVED!**

**White Rooms** can offer pre ski assessments and treatment for persistent injuries prior to your trip. **White Rooms** can also offer full assessment, medical imaging and treatment of injuries that you may pick up whilst away.



Knee Injury Treatment

**from...  
£30**

**from...  
£350**

Full Knee Injury Assessment + MRI Scan

**DIRECT ACCESS TO MEDICAL IMAGING:**

MRI Scan from **£299**  
Musculo-Skeletal Ultrasound Scan from **£160**  
Ultrasound Injection Therapy from **£260**

[www.whiteroomsltd.co.uk](http://www.whiteroomsltd.co.uk)



11 Henry Street, Lymm, Cheshire WA13 0LT

PHYSIOTHERAPY - SPORTS INJURY - ORTHOTICS - NUTRITION - PERSONAL TRAINING - RADIOLOGY

## More yellow lines!

MORE yellow lines could be introduced in the village in a bid to combat parking problems.

PCSO Lockett told members of the Parish Council that enquiries had been made about what the Police can do in relation to the parking on Brookfield Road and Eagle Brow following complaints about vehicles parking on pavements and causing obstructions.

As there are currently no parking restrictions at these two locations the Police are unable to take any enforcement action.

It has been suggested that either double or single yellow lines be put at these two locations and the parking could then be policed by Warrington Borough Council traffic wardens.

Meanwhile the introduction of waiting restrictions on Eagle Brow was advertised November 26, 2010. The statutory advertisement period ended on December 16.

When the parking restrictions have been introduced on Eagle Brow an assessment will be taken of the parking on adjacent roads such as Brookfield Road and Whitbarrow Road.

# When the high school was a hospital!

## A CHANCE meeting at a dog show has brought to light a fascinating history of Lymm's Oughtrington Hall during the war years.

Lymm resident Christine Mellor met Ursula Kennedy, discovered they both had Lymm connections and started chatting about times past.

Ursula, nee Frankenburg, was a member of the family which owned and lived at Oughtrington Hall - now Lymm High School - during the period 1938-46.

She was one of the four children of Sydney and Charis Frankenburg.

Her father was a director of a major manufacturing company in Salford, and her mother wrote a number of books on childcare and had a lifelong interest in improving the lives of women and children in inner-city areas.

The couple were closely involved



in the Greengate Hospital and Open Air School at Salford - a special hospital for undernourished children.

At the outbreak of World War 2, Charis, by then a widow, decided to move the hospital to Oughtrington Hall and for the whole of the war shared her home with more than 40 youngsters, aged under five, a matron, nurses and other staff.

As a trained midwife, she was able to take over if the matron was ill. Ursula was away at boarding school most of the time, but during holidays also helped out.

Now living in North Hampshire, she has many memories of Oughtrington.

"We had wonderful cellars which were converted into bedrooms, toilets and bathrooms for the children so they would be safe in the event of an air raid.

"The children were able to play in the grounds and their parents used to come by bus to visit them at weekends.

"It must have been a very different life for them, after living in Salford.

"We also had a pig farm at the hall for a while. One of my brothers won a pig, bowling at a church fete, and thought it would be an idea if it had a mate. Next thing we knew, we had a pig farm!"

It is more than 10 years since Ursula visited Lymm, but she has fond memories of the village.



"I went and looked around the school and was pleased to see a lot of the old buildings are pretty much the same as they were.

"We were pleased to let the hall be used as a hospital as it helped the war effort. My three brothers all served in the Army but by the time I was old enough to join up it was all over - which at the time quite disappointed me!"



# Catyas Cascadeaux

EXCLUSIVE GIFTS

Exclusive gifts for all occasions,  
Weddings, Christenings, Birthdays etc  
and especially Valentines Day.



*Open 7 days a week - 10am to 4pm on Sundays*

1 The Grove, Lymm, Cheshire. WA13 0HW  
e: info@catyascadeaux.co.uk w: www.catyascadeaux.co.uk  
t: 01925 754777



# Recipe for success for young Masterchefs!

THE food technology department at Lymm High School ran a Year 9 Interhall competition to find the Masterchef of 2010.

Youngsters had to enter their favourite recipes and the best ones were selected from each form. Pupils then battled their way to the finals

with some creative dishes such as Konafa, a delicious Arabic pastry made by Donya El-Nemr, Chorizo and mozzarella stuffed chicken made by James Brett, steak kebabs with a sweet chilli sauce made by Jack Train and 5-a-day cheesecake made by Tom Spencer.



But it was Lewis Jenkins' Devilled lamb cutlets, crushed potatoes and mustard seed salad that won the savoury section and Hannah Williams' Bonfire explosion that won the dessert section.

Local celebrity chef, Aiden Byrne from the Church Green gastro pub presented all the



competitors with certificates, the finalists with his own recipe book and the two winners with Masterchef trophies.

# 'Charity swimathon'

THE Rotary Club of Lymm is organising a "Swimathon" at Lymm Leisure Centre on Sunday, March 6.

It is hoped to attract up to 35 teams of six swimmers each - adults and children - and for teams to swim as many lengths as possible in 55 minutes.

Each team member will have sought sponsors for the number of lengths the teams completes and Rotary hope the event will raise a significant sum for local charities connected to children and young people, including participating schools' PTAs.

No team or individual will be expected to swim far - the idea is for the team to swim continuously for 55 minutes with just one member in the water at a time.

The fundraising target is £4,000 and entry forms are available from swimathon co-ordinator Martin Dunkley on 07966466175 or midunkley@aol.com. Closing date for entries is February 23.

**"My Brolley cleaner is wonderful and the service is well priced too."**

We are [www.brolley.co.uk](http://www.brolley.co.uk) and we always put our customers first. Call us today on **01925 321317** and let us take care of your household chores.

**Our services include:**  
Domestic cleaning, Building Maintenance and Painting & Decorating

[www.brolley.co.uk](http://www.brolley.co.uk) / [contactus@brolley.co.uk](mailto:contactus@brolley.co.uk)



**New for 2011 Kids Corner**  
Open every day 9am - 5pm  
Free WiFi


**Sophie's KITCHEN**

Serving Breakfast, Lunch, Light Snacks, Afternoon Tea, Coffee & Cakes. Cupcakes & Celebration Cakes available to order. Gifts & Crafts

Cupcakes made to order for Valentine's Day  
Visit our new website [www.sophieskitchen.co.uk](http://www.sophieskitchen.co.uk)

**Tel: 01925 753718 or 07957 325710**  
Lymm Nurseries, Tanyard Farm, 80 Rushgreen Road, Lymm WA13 9PR

**A different approach to family law**




At Lymm Family Law we specialise in all aspects of issues that may arise within a relationship from divorce through to pre-nuptials.

We focus on you, the individual, fitting around the structure and demands of modern day life.

Our offices are based in a quiet and tranquil area of Lymm village, giving you the discretion and serenity that you need when facing a relationship issue.

Weekend and evening appointments are available on request.

**01925 757144 / 07917711887**  
[lindsayjones@lymmfamilylaw.com](mailto:lindsayjones@lymmfamilylaw.com)  
[www.lymmfamilylaw.com](http://www.lymmfamilylaw.com)



Accessible | Affordable | Approachable

**REAL EARTH** **HUGE SELECTION ALL AT TRADE PRICES**

**NO JANUARY SALES**

**NO FREE GIFTS**

**NO GIMMICKS**

**JUST THE BEST PRICES ALL YEAR ROUND**



**NATURAL STONE TILES • WOOD FLOORING  
BATHROOM SUITES • UNDERFLOOR HEATING  
FURNISHINGS • FITTING SERVICE AVAILABLE  
PORCELAIN TILES • INDIAN STONE PAVING**

Lymm Nursery • Rushgreen Road • Lymm • Cheshire • WA13 9PR  
T: 01925 759 607 • E: [info@realearthuk.com](mailto:info@realearthuk.com)



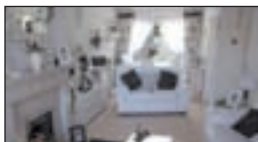
There is a renewed interest in the property market and Lymm remains at the top of the wish list for many potential buyers so don't delay, we have a list of people ready to purchase now.

### Featured Properties:



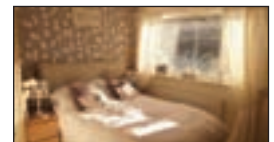
53 Canal Bank, Lymm £199,950

Don't miss the opportunity to view this deceptively spacious traditional waterside cottage. 2 bedrooms with room to extend subject to planning permission.



61 Mardale Crescent, Lymm Offers around £220,000

A beautifully presented family home with private gate to Bridgewater Canal towpath. Close to village centre. Must be viewed.



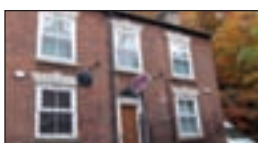
1a The Drive, Lymm Offers around £255,000

Detached 2 bedroomed bungalow on corner plot with room to extend subject to usual planning permission. A superb opportunity, this property has tremendous potential.



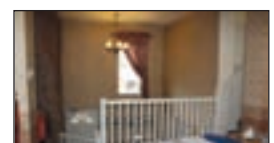
12 Quayside Mews, Lymm £299,950

A bargain at under £300,000! Spacious family accommodation so close to the village centre should not be missed. 4 bedrooms, pleasant secure garden.



Lymm Court, 11 Eagle Brow £695,000

A rare chance to purchase such a substantial property so close to the centre of the village. This site offers great flexibility. Reduced price.



We also require properties to let, owing to high demand. Landlords who instruct us in February will have no management fee to pay for the first 3 months. Call in to see us soon.

24 The Cross, Lymm, WA130HU | 01925 759042 | [www.egertonsstates.com](http://www.egertonsstates.com)  
Email [sellmyhouse@egertonsstates.com](mailto:sellmyhouse@egertonsstates.com) or [info@egertonsstates.com](mailto:info@egertonsstates.com)

**THE BARN OWL INN**  
Fine Country Dining  
7 Cask Ales  
New for 2011  
Party Nights



**Saturday 5th February**  
**Ricky Stone** - Ricky is an astounding singer making him a very popular artist singing 80s style who wows his audience

**Monday 14th February**  
**Valentine's Night with Chris Lloyd** - Chris has developed a reputation as a talented and versatile musician

**Saturday 26th February**  
**Justine is Tina Turner**

**Saturday 26th March**  
**Pete Valentine as George Michael** - Pete Valentine is one of the best George Michael tribute artists in the UK

**Saturday 30th April**  
**VICUS** - As VICUS performs, a rare and unique energy is radiated, luring the audience into soul surrendering adoration!

**Saturday 28th May**  
**Freddie Mensah** - Star Soul and Motown Singer

**Sunday 12th June**  
**Vintage Japanese Motorcycle Show** - The Barn Owl is proud to have the Vintage Japanese Motorcycle Club Show visit with over 100 bikes on show.

**Saturday 25th June**  
**Gary Setterfield is Elton John**

**Saturday 30th July**  
**Tribute to Abba with Abba Fusion**

**TO BOOK Tel: 01925 752020 or visit: www.thebarnowlinn.co.uk**  
Agden Wharf, Warrington Lane, Lymm, Cheshire. WA13 0SW

## New name and new look for bistro and wine bar

NEW proud owners of Bowdens Bistro & Wine Bar, Lyn and Dave Forshaw opened for business in December and are already receiving rave reviews from discerning diners in the village.

They have called it Bowdens after the Bowden family who ran a green grocers for many years from about the 1950's. Mr Bowden was quite a character by all accounts and also owned a tripe shop in the village. The building is about 300 years old and has been refurbished in keeping with the traditional style of the village.

Dave has worked in the hospitality industry in both England and Canada for 35 years.

He has owned Fushbutz, event catering in Cheshire, for the last 20 years.

His classical training brings expertise and experience to the new venture.

Special Bowdens Bites are available at lunch time, a glass of wine early evening, dine in the evening or enjoy a traditional Sunday roast.

The menus offer classic and modern dishes using the best and freshest produce, cooked simply, and enhanced with light and classic sauces. Wines have been carefully selected. The menus will change frequently and also offer special dishes depending on the season.

Dave and Lyn welcome residents to call in for a drink and experience the warm and friendly atmosphere, especially on Friday evenings when you can enjoy a glass of Bowdens Bubbles!



Lyn and Dave Forshaw with Town Crier Peter Powell at their official opening.

**Valentines**  
**Dinner Dance**  
**Friday 11th February 2011**  
**7.30pm**

Join Statham Lodge Hotel  
for a very special 4 course dinner  
Plus live music from 8pm- midnight  
by  
**THE BLUES BROS**  
(tribute)  
& our resident DJ  
£50.00 per couple  
or  
£110.00 per couple  
including accommodation  
Complimentary cocktail on arrival

**For further information & reservations  
please call Reception on 01925 752204**



**BOWDENS**  
Bistro & Wine Bar



**Bowdens Bites**  
Served Thursday-Sunday 12 noon to 5pm

**A la Carte Menu**  
Served Tuesday-Saturday 5pm to 9.30pm

**Traditional Sunday lunch**  
Served 12 noon to 5pm

**Bowdens Bubbles**  
Friday 4pm to 7pm  
Champagne & Sparkling Wines 25% off per bottle

We would like our Bistro to be your Bistro

Tel: 01925 754852  
16 Bridgewater Street, Lymm WA13 0AB  
www.bowdensbistro.com



# Dining Out with Lymm Life

**THERE** are probably people who still haven't asked the friendly staff at Elmas Mediterranean Cuisine about the origin of the restaurant's name.

For their benefit we reveal that Elmas is Turkish for diamond – and note, in passing, the apinness of the name, for this eatery at the corner of Pepper Street and The Cross is, indeed, a gem.

Since it opened, Elmas has expanded and is now more than twice its original size - proof, if it were needed, of its popularity. But the expansion has been handled tastefully so that none of the warm atmosphere of the original has been lost.

Indeed, on a cold winter's night, there is no more inviting place to dine.

Elmas offers a wide choice of hot and cold starters, meat and fish main courses, salads, pizza and pasta specials.



### Delicious

On our most recent visit we started with a delicious lentil soup, served with crisp, warm bread, and mouth-watering pan-fried mushrooms in a creamy wine sauce.

For our main course we chose medallions of lamb in a burgundy

and mint sauce, served with mashed potatoes and vegetables and char-grilled seabass in a white wine, garlic and lemon sauce.

These were cooked to perfection and imaginatively displayed.

For our desserts we chose ice cream and a delicious sticky toffee pudding.

Elmas has a good wine list and we complemented the meal with a fine bottle of Chilean sauvignon blanc.

Service was friendly, helpful and extremely efficient and helped make the evening extremely enjoyable.

# elmas

MEDITERRANEAN CUISINE

Romantic Dinner for Two  
on Valentines Day 14th February  
Special menu available

Elmas Gourmet Wine Tasting Event on Monday 28th Feb  
a chance to try 5 new wines along with and 5 course dinner - Call for reservations

### New opening times:

Mon - Thurs serving 4.30pm to 10.30pm

Fri, Sat and Sun Serving 11.30am to 10.30pm

New Delivery menu and service available within 2 mile radius  
See [www.elmasrestaurant.co.uk](http://www.elmasrestaurant.co.uk) for details



Tel: 01925 756049 [www.elmasrestaurant.co.uk](http://www.elmasrestaurant.co.uk)  
2 Pepper St, Lymm WA13 OJB

**Wedding Fayre**  
Over 20 Exhibitors  
Sunday 23rd January 12 - 4pm  
Free Entry  
Goody bag for each couple  
Bucks Fizz on Arrival

**Friday 11th February**  
Valentines Dinner Dance with a tribute to Michael Buble and other Greats. (3 course Dinner)  
£25.50 per person

**Monday 14th February**  
Candlelight Valentines Dinner in The Bridgewater Restaurant with live music  
3 Course Menu  
£22.50 per person

Tel: 01925 752233  
Whitbarrow Road, Lymm WA13 9AQ  
[www.macdonaldhotels.co.uk/lymm](http://www.macdonaldhotels.co.uk/lymm)  
general.lymm@macdonald-hotels.co.uk

THE LYMM HOTEL

**SOMETHING SPECIAL EVERY DAY**

**Monday** - Pizza night, choice of 4 pizzas  
**Tuesday** - Chippy night, fish, scampi, S & K Pud or Chicken burger  
**Wednesday** - Sizzler night, chicken and steak or fish of vegetable (All dishes £7.95)  
**Wednesday to Friday lunch times**, 6oz sirloin, chips and peas with a choice of sauces. £4.95

**Friday 28th January** - 70's disco, get your gear out for a fun evening. Retro menu available, advisable to book.

Spread Eagle, 47 Eagle Brow, Lymm, Cheshire, WA13 0AG  
Tel 01925 757467 Email [spreadeagle@jwlees.co.uk](mailto:spreadeagle@jwlees.co.uk)

Terms & Conditions: 1. One discount voucher per table will be offered. 2. VAT free dining applies to your total bill, including food and drink. 3. Each table must spend on average £10 per person.

J.W. LEES

BE YOURSELF

# Plan with 'chequered history' is approved

PLANNING chiefs have agreed that four roof lights, installed in a building in the grounds a large country house at Lymm without permission, can remain in place – despite outspoken opposition from a local councillor.

A neighbour had also lodged an objection to the roof lights at the building in the 14-acre grounds of Deansgreen Hall, in Crouchley Lane.

But the borough's planning committee decided to allow the roof lights to remain in place because officers argued that, at a distance of 34 metres from the nearest dwelling, the windows could not significantly

detract from the amenities of neighbours.

Cllr Sheila Woodyatt lodged a strong objection and referred to the "chequered history" of the application.

She told the committee planning consent for the building - described as ancillary residential accommodation - had been subject to no windows overlooking the rear gardens of

adjacent properties.

Cllr Woodyatt said: "This was totally disregarded by the applicant who inserted windows anyway. When asked to remove them he ignored the request and has now submitted a retrospective application."

"I am aware that deliberate flouting of planning guidance is not a material consideration, but the building in question, allegedly a garage though it is the size of a warehouse, does not need roof lights."

"I believe these windows will be

intrusive and detrimental to the residential amenity of the neighbours. I urge you to refuse this application."

But the committee approved the application after officers argued that while part of an adjacent garden would be overlooked, this would not be unacceptable and indeed was the "norm" for most semi-detached properties' rear gardens.

The committee was told that despite this, the applicant had agreed to fit the roof lights with obscure glazing.

## Board game with a difference

REGULARS at Lymm's Spread Eagle pub are enjoying a traditional board game with a difference – Lymmopoly.

Based on the famous Monopoly game, the idea came to mine host Nick Harris while he was having a bath one night!

The game – which is very pub orientated – features local features, businesses, and characters instead of the London properties which are normally associated with the game.

For instance, instead of a "Go to Jail" space on the board, there is a "Go to the stocks" space!

There are also special tokens, Lymm money and other fun features which provide for hours of fun.

Twenty "lymmited" edition games are available for purchase.



Nick Harris and Claire Singleton with the game.

## Having a problem with your insurance claim for burst pipes, fire, flood, theft or other major disaster?

Dealing with insurance companies has become increasingly time-consuming and frustrating as you are passed around from one person to the next, leaving you feeling that you have little control over the situation.

An expert claim consultant can take the hassle out of your insurance claim, guaranteeing the best possible outcome without you having to spend hours on the phone or getting involved in disputes.

Would you go to court without a solicitor? Would you buy a house without the help of an estate agent? Most people, knowing the potential legal issues that they could face, would not. Yet, when in the unfortunate circumstance of having to claim on their insurance, the majority of people still attempt to fight the battle themselves, unaware that they could have expert assistance from experienced claim consultants and insurance loss assessors, Cherry and Griffiths.

The fact of the matter is that insurance policies, both domestic and commercial, are tremendously complex documents and insurance companies, are notoriously difficult to deal with. But, Cherry and Griffiths have so much experience in all realms of insurance that you can be guaranteed that your claim will be handled efficiently and effectively. C.G.H.W. Ltd is registered and authorised by the FSA and was founded 18 months ago by Paul Cherry, Paul Griffiths, Geoff Williams and Richard Hope, trading under the name

of Cherry and Griffiths.

Having all previously been employed by the same company, they decided to combine their 126 years of experience to set up their own business, opening offices in Burnley, Preston and Manchester. Each director has a broad range of experience, with two being qualified loss adjusters. Between the team they also have extensive individual experience in large property owner portfolios, antiques and high net worth, business interruption, retail and hospitality and personal home insurance and always ensure that the right person is allocated to your claim. Whether your claim is related to burst pipes, fire, flood, theft or another major disaster, Cherry and Griffiths will work on your behalf to remove the hassle from your claim.

You won't have to get involved in disputes. You won't be passed from

pillar to post. Cherry and Griffiths will do it all for you while being on hand at all times to offer you support. By remaining in control of your claim, Cherry and Griffiths aim to avoid time consuming disputes with insurance companies, unless absolutely necessary, using industry know-how to negotiate the best possible settlement for your situation in the

quickest time possible. Also, because they know that your home or business is one of the most important things in your life, Cherry and Griffiths will ensure that, in the majority of cases, you will be in charge of selecting your own contractors and suppliers, rather than those suggested by your insurer, so you can have peace of mind that the job will be done properly.

Cherry and Griffiths has already built up a strong portfolio of clients in the North West and beyond, who appreciate the personal approach and comprehensive services that they offer. Your situation has already caused you a lot of stress, so why not let Cherry and Griffiths take the hassle out of your claim.

We offer an initial free no-obligation consultation. Call us now to find out more about how we can help you 08448 223 623.



**CG CHERRY & GRIFFITHS**

SUPPORTING YOU ALL THE WAY

**Cherry and Griffiths**  
**08448 223 623**

HOUSEHOLD BUILDINGS & CONTENTS  
COMMERCIAL BUILDINGS, MACHINERY & STOCK  
BUSINESS INTERRUPTION  
HIGH NET WORTH  
ANTIQUES AND FINE ART

PEACE OF MIND FOR THE POLICY HOLDER

**CG CHERRY & GRIFFITHS**

Motoring

# L-drivers duped by rogue websites

**THE Office of Fair Trading is taking action against websites that charge administration fees to learner drivers to book their driving theory or practical tests without clearly explaining the additional fees.**

Action was started after the AA highlighted cases where learners unwittingly paid surcharges of up to 65 per cent by booking their test through third-party websites rather than directly through the Driving Standards Agency (DSA).

The complaints related to commercial websites that invite learners to enter their details and preferred dates for a DSA test. The details are the same as the learner would enter if booking directly with the DSA - which charges no booking fee. Some sites include 'DSA' in their Google search listings or web page headings, which can make it confusing as to whose site a learner is on.

Learners were then charged more than £50 for a theory test for which the DSA charges £31, with the difference being described as an "administration fee".

Others were hit with fees of up to £30 to book a practical test - on top of the standard DSA fees of £62 for a weekday test or £75 for a weekend or weekday evening - while bookings for extended tests attracted booking fees of up to £40.

The AA's Simon Douglas said: "There is no place for websites that charge learners huge fees to book

their test without clearly explaining those fees. Learners can easily book directly with the DSA for no extra charge. 'Lookalike' sites that rip off learners must be shut down.

"Learning to drive is an investment in a valuable skill for life. But forking out big admin fees for do-little test

'booking services' is a waste of money few families can afford."

To avoid extra charges learners should book directly with the DSA, for the standard fee of £31 (theory test); £62 (practical test, weekday) or £75 (practical test, weekend or weekday evening).

## Volvo sales on the up!

VOLVO has announced that global sales were up by 11.2 per cent last year - a total of 373,525 cars.

Top selling model was the XC60, with sales of 80,723, with the V50 second with sales of 56,098.

The UK was the Swedish company's third biggest market, with 37,940 cars sold compared with 34,371 in 2009.

Increased production led to Volvo recruiting about 500 additional people at plants in Torslanda, Sweden and Ghent, Belgium.



*Pictured: The Volvo S60.*

## A satnav that says sorry?

HELP could one day be at hand for drivers who feel the urge to destroy their satnav after it has led them up the garden path.

In the future, satnavs will be able to tell when they have upset their driver and respond accordingly, possibly by saying sorry, according to Prof Peter Robinson, of Cambridge University's emotional robotics department.

He said: "I love gadgets like GPS satellite navigation systems but I hate the fact they are so difficult to use. I think they were designed by sadists. The problem is computers don't react to how I feel - if I'm pleased or annoyed they just ignore me. We're building emotionally intelligent computers that can read my mind and know how I feel."

"Computers are really good at understanding what someone is typing or saying. But they need to understand not just what I'm saying, but how I'm saying it."

The technology being developed utilises a number of sensors, capable of tracking things such as facial expressions, hand gestures and voice. So the driver who shouts, waves his arms about and scowls at the satnav might one day get a sympathetic response rather than the more usual, bland suggestion that he should do a U-turn on a dual-carriageway!

UNIPART CAR CARE CENTRE

**FREE Local Pick-up & Drop Off Service**

AUTOSAFE Quality Assured



# Agden Park Motors



Park Garage A56, Agden Brow, Lymm

**5 Star**  
workshop facilities  
for servicing and repair

**Over 300**  
tyres  
at competitive prices!

**MOT Testing**  
petrol & diesel



BODYSHOP  
01925 752235



AIR  
CONDITIONING  
REGAS/SERVICE

BIG ENOUGH TO COPE . . . SMALL ENOUGH TO CARE!

Contact **ALLAN** or **GEOFF** on **01925 752447**

# Shop Local

Welcome to our special feature which is aimed at encouraging our readers to support local businesses. Any local business wishing to feature in future editions please contact us on 0800 955 5247. Please mention this publication when responding to an advertiser.

**McDonald's**  
I'm lovin' it!

**DOUBLE CHEESEBURGER & MEDIUM FRIES**  
**£2.00**

Present your voucher before placing order  
Offer valid after 10.30am until 31.03.11 only at McDonald's®  
Poplar 2000 Service Area (M6/M56), Cliffe Lane, Lymm

**OPENING HOURS**  
Monday to Wednesday 5am until 12 Midnight  
Open 24 hours from 5am Thursday until 12 Midnight Sunday

nails by *andrea*

GELISH | ACRYLIC | BIO GEL | MINX

**NEW! GELISH COLOURS TO DAZZLE YOU!**  
The miracle nail colour that is GELISH will help your nails grow long and strong and soaks off in 10 minutes leaving a healthy nail

**NEW! PROFESSIONAL SPRAY TANNING SERVICE**  
Gift vouchers available for that special someone for

**Valentine's Day**

Upstairs @ The Hair Studio, 27a The Cross, Lymm WA13 0HR  
**07872 490767**

Performs like gel  
Applies like polish

MINX

## Lymm Osteopathic Practice

— Established 1979 —

**SUZETTE PULMAN, N.D. M.R.N. D.O.**  
Registered Naturopath & Osteopath

**DARREN HAYWARD, B.Sc. (Ost)**  
Registered Osteopath

We are both registered with The General Osteopathic Council (G.O.Sc.)

Open Monday to Saturday  
**Tel: 01925 752264**  
The Rise, 16 Grammar School Road, Lymm WA13 0BQ  
(Easy Access Road Parking)  
*Registered with all major insurance companies*

## Cutting Edge

Sharon and her team provide quality hairdressing for both men and women in a friendly salon with easy free parking. Sharon provides gentlemen's and boys cuts through to ladies and girls hairdressing including a full range of colour treatments.

**Now selling Bed Head products**

- Full head foils inc. Cut & Finish from £59
- Bridal Hair & Party Hair from £25
- Cut & Finish from £23
- Gentleman's hair cut from £5
- Children's hair cut from £7

Ring to make an appointment 01925 752735  
77 Whitesands Road Lymm WA13 9UJ

## Want to save money?

**Join the club!**  
(over 350,000 people already have)

**94% OF CUSTOMERS SAY THEY'D RECOMMEND US TO A FRIEND**

- ✓ Guaranteed savings!
- ✓ Save 25% on your household bills
- ✓ Award-winning customer service
- ✓ Which? Best Buy - Phone and Broadband Bundles Feb 2010
- ✓ UK's cheapest line rental
- ✓ Free Global Calls\*
- ✓ Triple Value\* guarantee on gas and electricity
- ✓ Cheapest online shopping
- ✓ 1000's of High Street retail partners
- ✓ Earn CashBack on shopping and petrol

**I ♥ the Club**

For full details contact:  
**0800 955 5247**  
New Media Centre, Old Road, Warrington WA4 1AT

**BEST BUY**  
**UTILITY WAREHOUSE**

\*Charges, terms and conditions apply. See www.club.co.uk for full details.

## Lymm Electric & Hardware

EST 1874

**Electrical Goods  
Repairs • Rewires  
Alarms • Security Lights**

NICEIC approved electrical contractors

**Dyson/Vac repairs & Service**

All work guaranteed

**01925 755252**  
12 Bridgewater Street, Lymm, Cheshire



# Tributes to 'fabulous' young man

FAMILY friends and former work colleagues have paid tribute to a former estate agent who sadly took his own life aged just 25.

Ashley McIntosh, who worked at Bridgfords in Lymm village centre, arrived in Lymm from South Africa in 2001 with his family, parents Gordon and Dawn, sisters BonnyJean and Kelly and brother Bradley.

He attended Lymm High School achieving 8 O'levels and 2 A'levels and worked at the Shell Garage, Higher Lane from 2004-2006.

Ashley then joined Bridgfords in 2006 where he worked until July 2010, also working part time at the Crown Pub.

From July 2010 he worked for Unitron as Regional Manager.

Ashley was also a keen sportsman and a member of Lymm Cricket Club, playing for Cheshire County under 18's and an avid supporter of South Africa's Ruby Team.

On Wednesday December 8 a celebration of his life was held at Altrincham Crematorium where more than 150 of his family, friends and colleagues attended with Lymm Cricket Club providing the guard of honour.

Most of the congregation then went onto the Crown Pub to toast Ashley and later that night four Chinese lanterns with personal messages were released into the sky in memory of this fabulous young man.

## Obituary

### Hugh Davies



THE funeral has taken place of one of Lymm's oldest residents, 101-year-old Hugh Griffith Davies, of Moston Grove.

He died peacefully on November 24 in Warrington Hospital.

The husband of the late Nora Davies, Hugh leaves two daughters, four grandchildren, two great grandchildren and a son-in-law.

Hugh was born in Chester and spent his early years in North Wales before moving to Warrington at the age of six, where he attended St Ann's School.

He joined the Royal Navy in 1926 as a boy seaman and volunteered for submarine service in 1931.

After discharge in 1939, he worked for the RAF and later Salford Electric and, finally, A Monk and Company, from where he retired at 65.

He enjoyed spending time with his family and keeping fit by swimming into his eighties and walking every day into his nineties. He moved to Lymm in 1988.

The funeral service was at Walton

Lea Crematorium where the Rev Keith Maudsley officiated.

Funeral arrangements were by John Burrows and Sons of Lymm.

## Rotary 'Santa' collected £5,000

MORE than £5,000 was collected by the Rotary Club of Lymm during the Christmas period.

A Santa float toured Lymm and Thelwall collecting funds to benefit community organisations, local charities and overseas aid.

Despite some freezing weather and on occasions heavy snowfalls, Santa managed to get around most of the planned routes - only missing out on The Cross and on one night when the weather was too severe.

A club spokesman said: "We apologise to anyone who did not get a visit from Santa and would like to thank all those residents who contributed so generously."

Established 1878

### John Burrows & Sons

Independent Family

## Funeral Directors

M. G. Tandy

J. A. Tandy

16 Higher Lane, Lymm

Tel: 01925 752501

# Meet your MP David Mowat

David Mowat, MP for Warrington South, holds regular surgeries throughout the constituency. If you would like to arrange

an appointment to discuss an issue of concern to you please e-mail him at [david.mowat.mp@parliament.uk](mailto:david.mowat.mp@parliament.uk) or telephone **01925 267580**.



**David Mowat**  
Member of Parliament  
for Warrington South

[www.davidmowat.org](http://www.davidmowat.org)

Produced by David Mowat MP  
House of Commons, London SW1A 0AA

twentyfourseven  
design and print ltd



## Special Offers

- 500 Full Colour Digital Business Cards **£35.00**  
(Buy 1 set, Get 1 set free!)
- 100 A3 Full Colour Posters **£38.00**
- 500 A6 Full Colour Double Sided Flyers **£50.00**
- 10,000 A5 Full Colour Flyers **£248.00**  
(Pay for 1 side, Get the other printed for free!)
- 60" x 40" Full Colour Posters **£12.00**

Subject to VAT where applicable

**t. 01925 240 247 e. info@247print.net**

a. The New Media Centre, Old Road, Warrington, WA4 1AT

**CLASSIFIED**

**Call 0800 955 5247 to advertise**

**ACCOUNTANCY & BOOKKEEPING**

**APLEGATE & CO** licensed and regulated by the AAT to engage in public practice in Accountancy, Book-keeping, Payroll, VAT, Self Assessment. Tel: 01928 739996/07803 218343. 2 & 8 Collinson Court, Frodsham WA6 7PN. (08/11)

**AIR CONDITIONING**

**CLIMATE CONTROL BY WARRINGTON** based 4 Seasons, for offices, shops, surgeries, schools, homes and conservatories like yours! Installed in a day guaranteed 5 years. Keeping you cool when it's hot and warm when it's not. www.4sac.co.uk 01925 756620 (6/11)

**BATHROOMS**

**The Bathroom Refurbishment Co.**  
We can create the Bathroom of your dreams  
One Warrington based Company  
One Job from start to finish  
Unique 3D virtual CAD design system  
Please visit our website  
www.bathroomrefurbishment.co.uk  
Please Ring Wayne  
01925 826 828 or  
07976 574 828 (6/11)

**LYMM KITCHEN & BATHROOM PROFESSIONAL INSTALLATION.** Ceramic wall & floor tiling. For free estimates and advice contact **Rob Evans** on 01925 752623 business or 07763 770408 mobile. Est 2002. Local references provided (13/11)

**BUILDING SERVICES**

**BIG DIG Groundworks**  
Flagging, Back Filling, Garden walls, Fencing, Patios, Drives, Foundations. For free estimates call Rob: 07934 563 266 or Tel: 0153 424 5462 www.bigdiggroundworks.co.uk (08/11)

**BRICKLAYER AVAILABLE** for garden walls, pointing etc. Tel: 01925 755441 Mobile: 07966 491624 (05/11)

**CARPETS, CURTAINS & INTERIORS**

**BRIDGEWATER FLOORING AND BLINDS** we supply and fit carpets, vinyls, laminates, karndean, commercial flooring and tiles. Blinds-venetian, vertical, roller and roman. Outdoor awnings, curtains, upholstery, tracks, fabrics, poles and finishing touches showroom open at agden brow. Free measure quotation service. Tel: 01925 755805. Closed Wednesdays. (12/11)

**CUSTOM-MADE** curtains and loose covers. All accessories supplied and fitted. Made-to-measure blinds. Our fabric or yours. Tel: Orchard Soft Furnishings 01925 756388. (15/11)

**To advertise**  
Call FREE  
0800 955 5247

**CARPETS, CURTAINS & INTERIORS**

**Paul Bains Flooring Solutions Ltd**  
Carpets, Wood, Vinyl, Laminates  
*Domestic & Commercial Supplied & Fitted*  
Family business covering all aspects of flooring including domestic & contract locations  
Uplifting of old flooring can be arranged  
Moving of furniture by arrangement  
Limited disruption from start to finish  
Check website for previous installations  
www.paulbainsflooringsolutionsltd.co.uk  
**Office: 01925 758835**  
Mobile: 07973 376224 (07/11)

**CARPET CLEANING**

**A1 STAINBUSTERS:** Fully guaranteed carpet and upholstery deep dry cleaning. Clean & dry in only ONE hour. Quotes for both commercial and domestic. Contact the Local expert **John Latham** on 01925 205210 or 07765 314080 (04/11)

**SAFECLEAN: SAFE ORGANIC CLEANING.** Specialists in cleaning all leather and fabric upholstery, rugs, carpets and curtains in situ. Ask about our new organic allergy relief system, Guardsman stain protection plans and carpet repairs. **Richard Vaal** on 0808 144 8178 (06/11)

**SIMPLY THE BEST CARPET CLEAN YOU WILL EVER** have. Cleaners UK Ltd. Est 23 yrs. Have your carpets & sofas beautifully deep cleaned leaving them fresh smelling & colour restored. Latest & best methods. Dry/steam. Professional, reliable & affordable. For more info call **Neil Riley** on 01925 264989/07831 336060 www.cleaners-uk.net (12/11)

**CENTRAL HEATING**

**CORGI REGISTERED GAS ENGINEER.** Andy Gas of Lymm, specialist in: Boiler upgrades, servicing, repairs to all domestic heating and gas appliances. Professional service. Tel **Andy** on: 07753 838129 or 01925 753712. (03/11)

**CHILDREN'S ACTIVITIES**

**TUMBLE TOTS** is the leading national physical play programme for children, classes available in Knutsford Hale & Bowden. We can be booked for private parties. Contact **Jane** on 07812-144450. www.tumble tots.com/sale (15/11)

**CLEANING SERVICES**

**arleys angels**  
• Spring Clean Specialists  
• Presenting your home for sale  
• Moving house  
• After building work cleans  
01925 266834  
... because you're worth it! (6/11)

**CLEANING SERVICES**

**SIMPLY THE BEST CARPET CLEAN YOU WILL EVER** have. Cleaners UK Ltd. Est 23 yrs. Have your carpets & sofas beautifully deep cleaned leaving them fresh smelling & colour restored. Latest & best methods. Dry/steam. Professional, reliable & affordable. For more info call **Neil Riley** on 01925 264989/07831 336060 www.cleaners-uk.net (12/11)

**COMPUTERS**

*Having Trouble With Your Computer?*  
Running too slow?  
Want to upgrade... go wireless?  
Call for experienced engineer  
Tel: 07974 448 165 or 01925 751 546 (03/11)

**DELIVERY SERVICES**

**FURNITURE FERRY LIGHT REMOVALS.** Collections arranged from Ikea, Costco and other stores, garden centres, auctions etc. You choose, you buy, I deliver - SIMPLE. Reliable, inexpensive service. Tel: **Matt 07970 178 333 or 01942 732768. www.furnitureferry.co.uk** (05/11)

**TnM Couriers** - specialists in urgent UK same day deliveries, international and UK next day services available, contract work undertaken, parcels to pallets, no job too small or too big, competitive rates. Call 01925 639029. (6/11)

**ELECTRICAL CONTRACTORS**

**A1 ELECTRICAL SERVICES PAUL LEWIS.** For extra sockets/lights, main board upgrades to full rewires, no job too large or small. No call out fee. All work guaranteed. Tel 01925 758337 or 07966 386806. Est 23 years. (06/11)

**EVERGREEN ELECTRICAL CONTRACTING.** NICEIC approved contractor. For lights and sockets to rewires, fuse-box upgrades. Qualified electrician. All work is to the latest IEE wiring regulations. No job too small. Most major credit and debit cards accepted. Tel: **David** on 01925 724219 / 07971 407022. (06/11)

**TRUST PROPERTY ELECTRICAL SERVICES.** NICEIC Part P Approved Contractor. All Electrical work undertaken. Inspection & Testing & PAT Testing. All work certified & guaranteed. Call **Tim** on 07754409906 or 01925 601055 (03/11)

**EQUESTRIAN**

**LYMM RIDING SCHOOL.** Learn to ride with friendly atmosphere, group lessons or private. Horses/ponies well schooled. Lessons from £10, we offer tests with pony club cert, please ring for more details. Training for pony club. **Rebecca Bennett** Reg. A1. 01925 750435. Mob 07778 866006. (12/11)

**WANTED, EXPERIENCED LADY RIDER** to help exercise and school horse during the day. Also occasional horse sitting duties. Call 01925 752520. (08/11)

**EQUESTRIAN SUPPLIES & ANIMAL FEEDS**

**STABLES SADDLERY.** EST. 1964. Good stock of all equestrian supplies and animal feeds. Lots of interesting and unusual equine and canine collectables. Tel: **Barbara Williams** on Lymm 752762. (02/11)

**FIRES & FIRE SURROUNDS**

**Quality Fireplaces at Affordable Prices**  
**WARRINGTON FIRE SURROUNDS**  
Fires, Fireplaces, Marble Best Prices  
Quality Value Service Guaranteed  
**01925 417731**  
www.warrington-fires.co.uk  
8 Lovely Lane, Warrington (follow signs for hospital) (6/11)

**GARDENING SERVICES**

**A F GARDEN SERVICES**  
REGULAR MAINTENANCE  
TURFING, SOFT LANDSCAPING  
CLEARANCES, POWER WASHING  
HEDGE PRUNING  
**07796 818 686**  
**0161 928 1722**  
www.afgardenservices.co.uk (6/11)

**LYMM BASED**  
**Beechwood Industries Ltd**  
Does your garden need a complete makeover or just good management?  
Free Assessment  
Free Consultation  
Landscape Design  
Construction  
Paving  
Lawn Care  
Tree Surgery  
Garden Maintenance  
Contact Adam Watford on  
**07749 253 308**  
www.beechwoodind.com (6/11)

**FOUR SEASONS GARDEN SHOP EXCELLENT** selection of perennials, shrubs, bedding, hanging baskets and much more! Excellent quality and even better prices! Free parking! Near Northwich CV8 2EB. Call 07792313460 (17/11)

**J C SLAVIN**  
Landscapes & Garden Maintenance  
Pruning • Garden Clearance • Fencing  
Flagging • Driveways • Landscaping Designs  
**01925 756 839**  
Mob: 07599 747 373 (08/11)

**LAWN DRAINAGE AND SOIL AERATION.** No trenches, no drainpipes, no digging, no repairs, no hassle. If this interests you Contact **Bob Harper** 01925 266852 or 07952 608701. (13/11)

**M J NEEDHAM LANDSCAPES** Award winning with over 15 years experience. All aspects of landscaping, specialist in bespoke construction. Qualified design service available. Contact 01925 825 645 or 07888 730 383 (03/11)

**SIMPLY GARDENS CONSULTANCY** offers maintenance and design advice; maintenance schedules; planting plans; expert plant selection; on-site training. Regular or occasional maintenance can be arranged. Call **Graham** on 01925 766873 or email **gard.cott@btinternet.com** (13/11)

**GATES**

**Village Gates**  
SPECIAL AUTUMN OFFERS NOW ON  
Manufacturers and installers of quality timber gates  
villagegates.co.uk  
01925 766629 or  
Charnock Road, Culterhwaite, Walsley (07/11)

**SIMPLY THE BEST CARPET CLEAN YOU WILL EVER** have. Cleaners UK Ltd. Est 23 yrs. Have your carpets & sofas beautifully deep cleaned leaving them fresh smelling & colour restored. Latest & best methods. Dry/steam. Professional, reliable & affordable. For more info call **Neil Riley** on 01925 264989/07831 336060 www.cleaners-uk.net (12/11)

**Promote your business here from as little as £72 for six months**  
Call FREE  
**0800 955 5247**

**Would you like peace of mind on your gas and electricity prices? Join the Club!**  
Our unique 'Triple Value' guarantee:  
1. For your gas, we guarantee our prices will always be cheaper than British Gas, wherever you live in the UK.  
2. For your electricity, we guarantee our prices will always be cheaper than the prices charged by the regional electricity supplier for the area where you live.  
3. And for your complete peace of mind we guarantee our prices will always remain competitive compared with the cheapest standard tariffs available from the 'Big 4' suppliers.  
For full details, contact: **0800 955 5247**  
And with no minimum contract, it's risk-free.  
UTILITY WAREHOUSE (6/11)

**CLASSIFIED**

**Call 0800 955 5247 to advertise**

**HANDYMAN**

**Handyman Services**  
Home, Office & Garden

Gutter Cleaning, Repairs & Replacement  
Welding Repairs & Fabrication  
Fascias, Soffits & Windows  
Patio & Driveway Cleaning  
All Garden Work, Flagging,  
Fencing & Turfing  
Interior & Exterior Painting  
Plumbing & General DIY  
*You Name It - No Job Too Small!*  
Tel Neil: **01925 757905**  
Mob: **07813 201850**  
handymanserviceslymm@hotmail.co.uk

(52/11)

**HAIR & BEAUTY**

**PROFESSIONAL MOBILE** hairstylist, creative cutting, colour/colour correction, including foiled highlights. Tel: Lorraine **01925 755441** / Mob **0786 7910805**.

(53/11)

**HEALTH CARE**

**THE WHITE ROOMS PHYSIOTHERAPY** and Wellness Centre. Rapid expert assessment and treatment of all musculoskeletal injuries. Spinal Specialists! Discover and tackle the cause of your pain! **11, Henry Street, Lymm, Cheshire WA13-0LT**. Tel: **01925 752333** Mob: **07903 822700**.

(52/11)

**HYPNOTHERAPY**

**MICHAEL MAHONEY** clinical hypnotherapist for IBS, Stress, Anxiety and many other problems. Medical Research project experience, BUPA Service Provider. **For FREE information sheet please email TimelineServices@aol.com** or ring **01925-658322** www.healthyaudio.com

(6\*)

**IRONING SERVICES**



**Carol's Ironing services**  
NEXT DAY PICKUP & DELIVERY SERVICE  
Lymm  
Tel: **01925 767945**  
Mob: **07979 948197**

(57/11)

**JEWELLERY**



**Jewellery Workshop**  
39 London Rd, Stockton Heath, Warrington, WA4 6SG  
Quality repair, remounting, design work and setting finished to a high standard.  
Loose certificated diamonds and gemstones supplied.  
Stockists of fine contemporary British Swiss and German jewellery.  
Tel: **01925 269292**

(51/11)

**KITCHENS**

**LYMM KITCHEN & BATHROOM PROFESSIONAL INSTALLATION**. Ceramic wall & floor tiling. For free estimates and advice contact **Rob Evans** on **01925 752623** business or **07763 770408** mobile. Est 2002. Local references provided

(53/11)

**LOCKSMITH**

**CHESHIRE LOCKSMITHS LTD** UPVC Door Specialist. Non Destructive Entry Service. Free Quotations. Lymm Based Business. Contact **Tony 07774 805 588**.

(54/11)

**OPTICIANS**

**ADCOTT OPTICIANS**. State of the Art opticians in the heart of Lymm Village. Comprehensive sight tests and a wide choice of spectacles tailored to you, whatever your budget. **01925 757075**

(51/11)

**PAINTING & DECORATING**

**N & K DECORATING SERVICES**, High Class Professional Decorators, Paper Hanging Specialist, Internal and External works undertaken, Lymm Based Company, Free Quotations. Call **01925 759936** or **07783 068377**.

(54/11)

**PAYROLL**

**WHY TRY TO BE A PAYE EXPERT?** Watkinson Black can provide a cost effective payroll service, releasing you to concentrate on your business. For further details please phone: **01925 413210** or e-mail: **info@warringtonaccountants.co.uk**

(6\*)

**PHOTOGRAPHER**

**BRENDA GREEN ABIPP**. Qualified professional photographer for People, Environmental Portraits, Weddings, PR, Special Occasions. Established 30 years. websites. **www.brenda.green.co.uk** **www.brendagreen@demon.co.uk** Tel. **01925 753580**.

(55/11)

**PICTURE FRAMING**

**EDGAR ART & FRAMING**, 19b The Cross Lymm. Picture framing, original art, jewellery, gifts and greetings cards. (Turn right at The Terrace Brasserie & Cafe and right again at the far end). Tel **01925 754700**.

(56/11)

**PLASTERING**



**B.E.A. PLASTERING OF LYMM**  
Full rooms plastered • Skimming  
Bonding • Stud walls built  
All repair work large or small  
Tyroleaning/Rendering  
Call David anytime on  
**01925 753966** or **07786 245068**  
www.beaplastering.co.uk  
Member of the Guild of Master Craftsmen

(52/11)

**LYMM PLASTERING**



Time served Tradesman  
Clean and reliable  
Fully insured  
All areas covered  
No job too small  
**Brian Gaffney**  
Tel: **07967 087034**  
(anytime)

(51/11)



To advertise  
Call FREE  
**0800 955 5247**

**PLUMBING**

**CL PLUMBING AND GAS SERVICES**  
Local honest plumber covering all aspects of plumbing and gas works. Boilers and central heating installed and repaired. Bathroom suites supplied and fitted. Cookers and fires fitted. Landlord gas safety checks. All plumbing emergencies - 24 hour call out. No job too small, OAP Discount rates. Tel **Craig 01925 819692** **07851 405466** www.clplumbing.co.uk

(58/11)



**Professional Plumbing and Building Maintenance**  
All aspects of plumbing & building maintenance from leaks, guttering, washing machines, central heating and full bathroom installations  
Call Mike (resident) today for a FREE QUOTATION  
**T: 01925 740537**  
**M: 07821 695798**

(52/11)

**PB PLUMBING**. All domestic and commercial work. Fitted bathrooms and tiling. Small jobs welcome. Free quotes. Fully insured. C&G qualified. Gas Safe Registered Call **0161 928 3253** or **07821 554867** or Freephone **0800 824 7747** or visit **www.pbplumbing.co.uk**

(57/11)



**STEPHEN ROBERTS**  
Plumbing and heating, installations and servicing, boiler breakdowns, system upgrades  
free estimates  
**CORGI REGISTERED**  
Tel: **07830 331231**

(54/11)



**Plumbflow Ltd**  
Plumbing and Heating Services  
All plumbing & gas installation/repairs  
boiler replacement/servicing  
bathrooms  
Call today for a FREE QUOTATION  
**01925 468003**  
www.plumbflow.com

(6\*)

**PIANO TUITION**

**VISITING 1-2-1 PIANO/KEYBOARD TUITION**. Experienced open minded tutor. 100% exam pass rate (60%+ merit/distinction). Flexible informal approach. First 5 lessons half price till January 2011. Call **Tony Hopkins (Dip ABRSM) 0161 973 0312** or mobile **07591 696388**.

(52/11)

**RE-UPHOLSTERY**

**TRADITIONAL** and modern re-upholstery. Dining chairs, headboards, 3-piece suites etc. Customer's own fabric welcome. Tel: **Orchard Soft Furnishings 756388**.

(52/11)

**ROOFING**

**J & S ROOFING**. Roofing repairs & complete replacement. Built up flat roofing, Slating, Tiling, Fascias, soffits and guttering Free quotes, references available. Tel: **0781 488 0246 & 0788 639 0444**.

(53/11)

**SITUATIONS VACANT**

**TEMPORARY OFFICE VACANCY TO START END February 2011**. Admin. Assistant to work in small, busy Lymm office 4 days per week, 8.30-4pm. Accuracy, reliability, good computer skills and good telephone manner are all essential. Non-smoker. (Wage dep. on experience) Please send application plus up to date c.v. to **OTAS, PO Box 149, Lymm, WA13 0XL**

(52/11)

**TAXI / PRIVATE HIRE SERVICE**



**Frazer's of Lymm**  
Private Hire Service • Good local rates  
Reliable friendly service • up to five seater  
Airport • Station Schools • Business or pleasure for OAPs  
Contact **Nigel** on **01925 754426** or Mob **07812 674822**

(52/11)

**TAXI / PRIVATE HIRE SERVICE**

**LARRY'S CARS**. Airport transfers and private hire. All UK airports covered. Over 10 years experience in the Lymm area. Call **01925 755060**. Mob **07989 342179** or email **anthony.grace@btconnect.com**

(53/11)



**Silverfox Private Hire**  
Black, discreet 5-seat Chrysler Voyager for all occasions: Airport Transfers, Corporate Travel, Contract Work.  
Any destination, Professional, reliable service Tel: **07964 194150**

(53/11)

**TREE SURGERY**



**R & R Tree Services**  
Tree Surgery • Pruning  
Hedges • Turfing • Fencing  
Flaggging  
All jobs no matter how big or small  
Richard Jennings  
M: **07802 512263**  
T: **01925 750418**  
www.randrtreeservices.co.uk

(53/11)

**TUTORS**

**CHESHIRE TUTORIALS** offers tuition. Primary to 'A' level. Tutors especially primary maths, science and English welcome. Tel: **01925 758296**.

(52/11)

**FRENCH OR SPANISH TUITION** for conversation, exam preparation or business. Learn a new language, improve your language skills or prepare for your GCSE or 'A' Level exams. Contact: **Suzanne** on **01925 759597** or **07790 965250**

(59/11)

**TV - SATELLITE**

**AERIALS 2000** of Lymm. No job too small. All work guaranteed. Aerials and satellites supplied and fitted. Sky subscriptions available. OAP reductions. Sky Digital / On Digital. 7 days a week. Tel: **01925 753427**. Mobile: **07712 632315**.

(52/11)

**WINDOWS & GLAZING**

**NEIL COPELAND WINDOWS & Conservatories Ltd**. Specialist in uPVC double glazing windows, doors, porches, conservatories, also fascias and guttering. FENSA registered. All work guaranteed. Tel: **01925 756138 / 07961 361550**.

(52/11)

**SP GLAZING** for all your glazing requirements, double glazed units including failed and misted units, broken windows, mirror fixing. Kite marked to B/S. Time served glazier with over 30 years experience. For a friendly no obligation quote tel **Sam Pendlebury** on **01942 671859**. Mob **07919 660296**.

(54/11)

**MOTORING SERVICES**

**CAR SALES**



**PARKVIEW CAR SALES**  
We buy and sell  
**QUALITY CARS**  
Best price paid  
Telephone Peter on  
**01925 575737 / 07957 545479**  
23 Podgate Lane  
Podgate, Warrington  
Cheshire, WA1 3RS

(6\*)

# Banner & Co

Independent Residential Sales and Letting Agent



## PROPERTIES ARE MOVING!

Let us show you how we sell / rent our properties.

- As a privately owned company we have the ultimate incentive to sell/rent your property for as much as possible in the best possible timescale
- Open 7 days a week, accompanied viewings including late nights
- Advertising both locally, nationally and via the web
- Free rental guarantee

## JOIN IN OUR SUCCESS

If you are considering moving now or in the future, or would simply like some advice regarding your property please contact Linda or Andy



01925 753636  
[www.bannerandco.com](http://www.bannerandco.com)

*Please note that if you have already instructed another agent, we would advise you to check any agreement you may have to ensure you are not liable for more than one commission by instructing us as your agent*

