

Lymm

Life

FREE EVERY MONTH

December 2012

Issue: 165



Lymm 10K
.com

NOW OPEN FOR ENTRIES

Santa is coming to Lymm

Centre pages



- ☛ dog walking ☛
- ☛ cat sitting ☛
- ☛ puppy visits ☛
- ☛ home boarding ☛

www.petsatplay.me | Call Louise on 07512 584 737



QualitySolicitors
Forshaw Davies Ridgway

For whatever life brings.

01925 604713

Office in Stockton Heath
qualitysolicitors.com/fdr

smile :)

Orthodontics without
the waiting list
Free Initial Consultation
Interest free
credit available

Cairn-Lachne | Dental Solutions

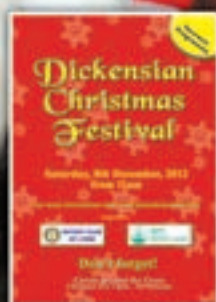
T:01925 75 65 65

Banner & Co

Independent Residential Sales
and Letting Agent

See our main advert
on the back page
for details

01925 753636



Dickensian Festival programme

Centre pull-out

Regular news updates at www.lymmmlife.co.uk

Editor's Comment



Editor

Gary Skentelbery

Production

Paul Walker

Business Manager

Tony Record

Advertising

Freephone
0800 955 5247

Editorial

01925 623630

Email

info@lymm.life.co.uk

Websites

www.culchethlife.com
www.frodshamlife.co.uk
www.lymm.life.co.uk
www.warrington.tv
www.warrington-
worldwide.co.uk

Address

New Media Centre
Old Road Warrington
WA4 1AT

*Lymm Life is published monthly
by Orbit News Ltd.*

*The contents of this magazine
are fully protected by copyright
and nothing may be reprinted
or reproduced without prior
permission of the publishers.*

*The publishers are not liable for
any statement made or opinion
expressed by third parties in this
publication.*

Printed by TwentyFourSeven

THERE is no doubt it will have been a tough year for many businesses in the Lymm area but hopefully the season of good will can bring a welcome boost.

The Dickensian Festival is fast approaching which is a vital trading period for the village traders and also a welcome opportunity for local charities and community groups to raise their profiles and generate much needed funds.

It was pleasing to see that Lymm Round Table's annual bonfire and firework display at Lymm Rugby Club raised a staggering £6,500 for local good causes - this is indeed a fantastic amount of money during difficult times for many.

Many of those looking in from the outside see Lymm as an affluent area - but it has suffered just like many other areas and I am sure there will be

many families facing extreme financial hardship.

It is with this in mind that this year's Lymm Dickensian Day will feature many free activities for local youngsters to enjoy - and lets not forget that however bad we feel the economy is at the moment - it is a long way from the Victorian Days of work houses and soup kitchens.

So let us look forward to Christmas and the New Year with optimism and when we see Santa and his helpers on his rounds during December please give generously if you can, to help those who are less fortunate.

Merry Christmas and Happy New Year from all the team at Lymm Life.



**COPY DEADLINE
FOR LYMM LIFE
JANUARY ISSUE
IS NOVEMBER 27**

Reflexology - Acupuncture - Herbal Medicine
Bowen Technique - Hypnotherapy
Physiotherapy - Osteopathy - Homeopathy
Colonic Hydrotherapy - Counselling
Private GP - Stop Smoking - Weight Loss
Chiropody - MLD - Massage

Gift Vouchers available, ideal for a Christmas Gift!

Please call to find out more
Tel: 01925 730123

www.cheshirenaturalhealth.co.uk
Cheshire Natural Health, Beehive House, Torporley Road, Shelton, Warrington

N & J STANHOPE

Coal and Log Supplies

**Home grown
farm fresh Turkeys
and Christmas Trees**

Open 7 Days

**Broomedge Farm
Burford Lane, Lymm WA13 0SE**

Tel/Fax: 752830

**Brand New
Memory Lane
Community**



*Having dementia hasn't stopped
my father enjoying life.*

- Nursing Care
- Residential Care
- Dementia Care
- Respite Care

Coming to terms with my father's dementia was difficult. I was desperate to find him the best possible care. Then I learnt about the *Memory Lane Community* at Cheshire Grange Care Home. The specialist staff are truly wonderful. Thanks to them he can still enjoy some of his favourite hobbies and they treat him with the utmost respect. Dementia can be a cruel illness but my father's carers are the kindest people I've ever met.

Thank you, Cheshire Grange!



Why not call us on 01925 750 670
or drop in for a chat over a cup of tea?
www.barchester.com



Cheshire Grange Care Home Booths Hill Road, Lymm, Cheshire, WA13 0EG

Bonfire raises £6,500 for charity

CROWDS turned out in force to support the annual bonfire and firework display organised by Lymm and District Round Table and helped raise £6,500 for charity.

The event, sponsored by Kids Planet Nursery, was held at Lymm Rugby Club.

It featured two firework displays – including an early one especially for

children – and a range of food treats to keep everyone happy. There was also the return of the popular designated area for disabled people and their carers.

Organiser and Round Table member Mike O' Crowley said: "It was another great bonfire event and we're particularly pleased to have raised so much given the number of other local displays also held on that evening."

"It was a bitterly cold night so it was great to see so many people

come for both the earlier children's display and the main display – their support will go towards helping out a charity or community group in need. A big thank you must also go out to the volunteers who helped to run the stalls too including Lymm Ladies Circle and Lymm Lions."



Photos Rachel Sinclair

Sophies Soft Furnishings

Curtains • Roman Blinds
Cushions • Tiebacks • Poles
Tracks • Valances • Pelmets
We design, make and fit to meet your exact requirements.

For free home visit or advice ring
Anne on 01925 754446
www.sophiessoftfurnishings.co.uk

Whites Sports Warrington Market

1901 - 2001 - 100 YEARS OF EXCELLENCE

Specialists in:
Darts, Bowls, Snooker, Air Guns,
Walking Sticks, Warrington Town
Merchandise, Rugby, Cricket, Football

GIFT VOUCHERS AVAILABLE

Telephone/Fax:
01925 631531

Kids Planet

A world of difference for you and your child

We offer the world as seen through the eyes of a child. We provide the highest standard of day care and education, creating a unique home from home for our children.

- Excellent Ofsted reports
- Flexible opening times
- Ultra secure environment with CCTV
- Healthy & nutritious menu

To learn more about our day nurseries in Beamont, Lymm or Warrington Centre contact our Head Office:
Kids Planet Nurseries Group,
29 Eagle Brow, Lymm, Cheshire WA13 0NA.
Email: mail@kidsplanetdaynurseries.co.uk
www.kidsplanetdaynurseries.co.uk

Kids Planet

Please call: 01925 753 448
or go to our website:
www.kidsplanetdaynurseries.co.uk

Beamont: 01925 630 879 • Lymm: 01925 759 220 • Warrington: 01925 417 350

-BC-

BANKFIELD CONSTRUCTION Ltd

New to Lymm

Inspirational design, high quality construction, bespoke interiors at an affordable price

- 30 Years experience
- New build and extensions
- Out building and garage conversions
- Contemporary kitchens
- Designer bathrooms
- Home office or study

30 Massey Brook Lane, Lymm, Cheshire, WA13 0PN

Tel 01925 751673
Mobile 07792 044137
www.bankfieldconstruction.co.uk

Your local builder

What's On

in conjunction with **Lymm Parish Council**



December 10

LYMM HISTORY SOCIETY

Interpreting Old Photos of Lymm
Linda Clarke
Lymm Village Hall, 8pm
Visitors always welcome
More info Lynne Smith 01925 756776

December 11

LYMM PARISH COUNCIL

Lymm Parish Hall 7.30pm

LYMM LIONS GROUP

Meet: Bridgewater Club, Lymm
1st and 3rd Tuesdays of the month. 8pm
Contact: 0845 833 5729

LYMM THURSDAY EVENING BRIDGE CLUB

Lymm Village Hall every Thursday 7pm

MAPLE LODGE ART GROUP

Meet each Wednesday 9.30am - 12.30pm
Maple Lodge Guide HQ, Pepper St, Lymm
Details: 01925 755126

ROTARY CLUB OF LYMM

Every Wednesday at Statham Lodge Hotel
7.15pm for 7.30pm
Contact the secretary 01925 650189

LOVING HEARTS & HANDS

Knitting for charity at Lymm Methodist Church,
2nd and 4th Thursday each month.
1.30pm - 3pm. Details: 01925 753298

MARKET LUNCHESES

Eagle Brow Methodist Church
3rd Thursday in the month
Light lunches 12 noon till 2pm. All proceeds to
Age UK and YMCA Room at The Inn

LYMM SCOTTISH COUNTRY DANCE CLUB

St Mary's Church Hall
Second and fourth Fridays (Sept - May)
7.30pm. Details: 753853

LYMM BAPTIST CHURCH FOYER LUNCHESES

Higher Lane. Mondays (during term time).
12 noon to 1.15pm. £2.50

GARDENING CLUB

Meet Third Wednesday of the month
Lymm Baptist Church, Higher Lane. 7.30pm
Visitors welcome. £2 includes tea and cake

LYMM FLORAL ART GROUP

Lymm Village Hall
Third Monday of the month (except August)
at 7.30pm

LYMM ORNITHOLOGY GROUP

Lymm Village Hall, 7.45pm for 8pm,
last Friday in the month (ex June & July).
Guest speaker, Slide Show, Refreshments.
Visitors welcome. First visit FREE.
Also field trips. Details: lymmog.co.uk

LYMM PHOTOGRAPHIC SOCIETY

Every 2nd Wednesday (ex July & Aug),
7.30pm
Spread Eagle pub, Eagle Brow.
Details: www.lymmphotosoc.org.uk

LYMM WINE AND BEER CIRCLE

Every 4th Wednesday, 8pm
Lymm Royal British Legion Club.
Details: 01925 604400

Winter Warmer is a sell out - thanks to Lymm Life!

LYMM Festival Winter Warmer series gets off to a flying start on November 22nd with the appearance of TV and Radio personality Tony Hawks.

Following publicity in the last issue of **Lymm Life** the evening sold out weeks ago and promises to be a memorable occasion.

The festival already has three events lined up for the New Year. It kicks off with the ever popular Blues Night on Feb 1st at Lymm Golf Club and is followed by Peter Corbett taking us on a hilarious trip down memory lane with his one man (no bear) show - "25 years with my hand up Sooty's bum" on Feb 28th at the Lymm Hotel.

The Big Sing choir swings back into action in the New Year too under the guidance of Susan Healey. In March they will be welcoming a very special guest - Denise Leigh whose recent performances include singing to a UK audience of eight million at the opening of the paralympics. Winter events organiser Alan Williams told **Lymm Life** "We are incredibly lucky not only to have some-one of Denise's international; reputation appearing in

Lymm but she has also kindly agreed to include two pieces that will feature the Lymm Big Sing Choir". The concert will also include local singing star Helen Monks and is on March 17th at Lymm United Reformed Church. Details of all events at www.lymmfestival.org.uk. New choir members welcome - no audition lymmbigsing@gmail.com




LYMM PARISH COUNCIL

Tuesday, December 11
Lymm Parish Hall
7.30pm

To feature your event on this page please call our team on

01925 631592

Community asset transfer success

LYMM Youth and Community Centre has been taken giant steps forward since Warrington Borough Council agreed to make a Community Asset Transfer of the premises in the village centre.

Using grants released by the Parish Council and with help from local volunteers, the Association has already fitted new double glazed windows and a new kitchenette in the upstairs lounge area and a new computerised security system with new doors and keyless locking is being installed. Grant applications are being submitted for a new central heating system with unlimited hot water, and renovations to the downstairs toilets, and new folding chairs and tables have been ordered. Yet while these improvements to the building are much needed, the Association is mindful that the building is only a resource which enables it to provide facilities for the local community.

Volunteer organiser, Su Williams, threw out a challenge to local people and organisations saying: "This is your Centre, we want it to be a hub which local people and local organisations can use to meet your needs."

"We have secured these premises for

our village for the next thirty years purely by the efforts of our volunteers. We want volunteers from the community to tell us what the centre should be used for and then come and help us to mould it to your needs".

Association Chairman, Steve Griffiths added: "We are very conscious of the trust that both the Borough and Parish Councils have put in us in helping us to develop this facility for our community. We have started the process to update and develop these premises at the heart of our village, but are very aware that the really important task is to develop services for the people who make up our community, particularly the old, young, disabled and disadvantaged. We already run clubs for young people from 7 to 17 years old, Socials for Seniors, Sunday Markets, Thursday Breakfasts and Film Shows but we want to engage with organisations and individuals who can suggest additional facilities that could be provided."

The Centre will be providing refreshments and hosting stalls as part of its contribution to the community on Dickensian Christmas Day. A full programme of current activities can be viewed at the LYCA website: www.lymmca.org.uk/whats-on/




"During this difficult time for the economy, I am acutely aware of the problems faced by many of the people in Warrington who are in low income jobs or who are jobseekers. Since 2009, I have been running a Jobs Club and so far 150 people have been helped back into employment or education."

I will be holding a Jobs Fair on
Friday 8th February, 2013
at The Maxwell Jones Stadium.

This is a fantastic opportunity for employers to meet talented, local people looking for jobs."

David Mower - MP for Warrington South

www.warringtonjobsfair.com

The Rosebank Centre & Rosebank Naturegarten
For babies, 3-5 year olds and after-school children

The Natural Choice for your child - Pepper St, Lymm

- Excellent facilities and extensive grounds
- Forest day options
- Outstanding Parent Partnership




Make sure your child has a head start and a childhood to sing about. Come and have a look yourself, just call >

Julie 01925 756900 or Sadie 01925 758959

With an increase in sales, we currently have clients waiting to purchase. Ridgeway Residential is the right choice to sell your property quickly and efficiently.

Please call for a Free Market Appraisal Today

FOR SALE

FOR SALE



REDUCED

22 Chaise Meadow, Lymm

The property offers extensive and versatile accommodation arranged over Three floors incorporating a fabulous open plan Dining Kitchen with Living Area to the Ground Floor in addition to a more formal Lounge. There are Six Bedrooms over the Two Upper Floors served by Four stylish Bath/Shower Rooms.

OIR £535,000



33 Rushes Meadow, Lymm

Modern large end mews in prime location, close to schools and backing onto farm land. Entrance hall, good sized lounge, dining kitchen, downstairs w/c and storage, 4 double bedrooms, 2 bathrooms, off road parking for several cars, garage with electric door, gardens front and rear. Cul-De-Sac location.

£349,950



18 Statham Drive, Lymm

We are pleased to be able to offer for sale this modern link detached property standing at the head of a cul-de-sac backing onto the Bridgewater canal. The property benefits from southerly rear aspect and the accommodation is as follows: entrance hall, lounge, separate dining room, kitchen, conservatory, three good size bedrooms, two with fitted furniture, bathroom, double length garage, mature well stocked gardens.

£275,000



27 Star Lane, Lymm

A semi detached property in sought after location, entrance hall, lounge, dining room, kitchen, 3 bedrooms, newly fitted bathroom, off road parking, gas central heating, good sized rear garden.

£189,950



Rose Cottage, 8 Warrington Road, Lymm

A well presented and fully refurbished mid terraced property. lounge, dining room, fitted kitchen, utility room, downstairs w/c, 2 bedrooms, newly fitted bathroom and converted loft room. Communal garden, off road parking, gas central heating and double glazed. Viewing Highly Recommended.

£174,500

TO LET

Ridgeway Residential is the leading independent specialist Letting Agency in the Lymm and surrounding area.

TO LET

As specialist Letting agents we concentrate on giving you the best service without any conflict of interest. We have been renting for over 25 years and offer competitive fees, friendly and knowledgeable staff. (One of the largest choices of property). In house property management. First class home rental and management service, for premium quality properties. Combining a high level of personal care with exacting attention to detail, we look after your needs whether you're looking for property to rent or if you want to let your property.

If you are unhappy with your current agent or just want a fresh approach call Paul today to discuss your requirements. 01925 756931

19 The Cross Lymm Cheshire WA13 0HR T. 01925 756931 E. sales@ridgewayresidential.co.uk



globrix.com www.ridgewayresidential.co.uk

Wolves winning ways with Probus

NEIL Kelly, Warrington Wolves Foundation Director, spoke to LYMM Dingle Probus Club on Wolves work in the community.

Neil outlined the set up of the Foundation and its aim to use sport as a motivator to engage with young and old alike. This activity is promoted across a wide range of activities from sports coaching and education for the young to healthy living in later life.

Wolves directors, players and staff are hands on in their support to give an added dimension to the work. The Foundation, being a standalone charity, is recognised by Warrington BC and is well supported by a number of local companies. Even so, fund raising is one of Neil's prime concerns, sponsorship, donations or volunteering all bringing various benefits to participants.

Neil brought along the Challenge Cup for Probians to admire and fielded questions after his talk on why the name Wolves had been chosen, to the potential for developing Rugby League as a nationwide sport.

David Birchall responded by revealing that his father had been a shareholder of "The Wires" and that he had a vivid memory of attending his first game at Wilderspool in 1946, when Wire played Workington. David could hardly forget the game; Workington kicked off, the ball soared on high and came down in the stands to knock him out. He has remained a staunch supporter ever since and retains his father's now worthless shares in the old club as a souvenir.



Roger Anderton - President of LDPC, The Challenge Cup and Neil Kelly - Warrington Wolves Foundation Director.

Residents oppose stables plan

THIRTY nearby residents have lodged objections to a plan to erect a stable block on land to the north of Booths Lane, Lymm.

Objections have also come from Lymm Parish Council and local borough councillors Sheila Woodyatt and Ian Marks.

Planning officers have recommended the scheme be approved - but members of the borough council's development management committee have decided to visit the site before reaching a decision.

Objections are based on various grounds, including overdevelopment, harm to the Green Belt, sub-standard access, traffic, etc.

The plan involves an L-shaped timber stable block, with five loose boxes. Access would be to Booths Lane and an internal track would be provided between the access and the building. According to the applicant, the horses to be accommodated would be Connemara ponies - smaller than most breeds of horses but class as large ponies.

The stables would be for private use only by the applicant and his family. A storage barn, originally included in the proposals, has been omitted.

Residents have formed an action group which has engaged a barrister to fight the plans.

Advertiser's announcement

When the oven is most important

NEW research has revealed that around a quarter of consumers hardly ever attempt to clean their oven - which in the run-up to Christmas is the most important appliance in the house.

As a result, they may find the oven covered in ingrained grease and grime from the whole year - which doesn't help when there's a turkey to roast.

Locally based oven valeting specialist Paul Clark says now is the time to call him in to ensure the oven is fit for purpose.

He said: "Many people will be anxious to ensure that their home looks as clean and tidy as possible, but they often neglect their oven, even though it plays just as important a role in the celebrations as the Christmas tree."

Paul, from Ovenu, added: "If it's one of those jobs you hate then get the experts in so it looks as good as new, and is ready to cope with everything you throw into it, including the turkey and all the trimmings."

The Ovenu valeting process involves dismantling key components of the oven such as the door, interior panels, fan and shelves and placing them into design-registered equipment, which uses non-caustic environmentally-friendly products to clean the oven parts.

The whole process takes around three hours and leaves the oven in immaculate condition.

Paul can offer expert advice and service on 01925 45 3377, or at www.ovenuwarrington.net

We Clean Ovens ...so you don't have to!

Call us today to leave your cooking appliances sparkling, using our eco friendly products.

oven^u
oven valeting service
Local | National | Affordable

Our oven cleaning experts will leave you free to enjoy your valuable leisure time.

Call for LOCAL service

01925 453377 ovenu.co.uk

Bytewise Computers Ltd
Call 01925 711338 - www.bytewise.net

PC Health Checks / Virus & Malware removal service
for Home & Business customers
Full service & support contracts available

Windows 7 Professional
Office Professional
Windows Small Business Server

Please scan and bookmark with your smartphone for our latest offers

Thelwall Upholstery

FOR THE MOST COMPETITIVE RATES IN THE AREA
49 Knutsford Road, Grappenhall WA4 2NR
Call Sean on: 01925 604770 or mobile: 07799 228080
www.upholsterywarrington.co.uk

For all your upholstery needs
SPECIALISTS IN:

- Re-filling Cushions • Re-springing • Full Re-upholster
- Dining Furniture • Headboards

A wide range of sample books to choose from
All at competitive rates

PHONE FOR YOUR FREE ESTIMATES

Abbey Leys Farm Shop

Fresh Farm Food at its Best!

Organic Free Range Eggs • Goose and Duck Eggs • Pickled Eggs
Home Grown Potatoes • Fresh Fruit and Vegetables
Farmhouse Cheshire Cheese • Butter • Fresh Milk
Farmhouse Ice Cream and Lemon Cheese

Opening Times: 9.00am - 5.30pm Mon - Sat. Sun 10.00am - 4.00pm

ABBEE LEYS FARMERS' MARKET
First Sunday each month 10am - 2pm

Tim & Janet Harrison
753465
Peacock Lane, High Legh

Bungalow plan angers neighbours

A PLAN to build a bungalow on the edge of the Green Belt at Lymm has outraged nearby residents.

The proposal involves a small parcel of land off Longbutt Lane at its junction with Grammar School Road - and over a period of more than 40 years five previous planning applications have been thrown out.

The most recent, two years ago, was for three affordable dwellings and went to an appeal before being finally refused.

Other previous schemes have involved two retail units and a detached house with garage.

Nineteen nearby residents have lodged objections, along with Lymm Parish Council and local borough councillor Sheila Woodyatt.

She said: "The site is totally unsuitable for development. It is a locally very sensitive site and any

development would compromise the openness of the adjacent, very precious green belt.

"Longbutt Lane is a standard highway and not suitable for additional traffic."

The parish council say the development would have an adverse impact on a safe route to local schools.

The borough council's nature conservation officer says no ecological assessment has been provided. A brook runs alongside the site where protected water voles might be present.

Members of the borough council's development management committee are to visit the site before reaching a decision.

Raising money for good causes

PUPILS and parents from Statham Primary School have been busy raising money for good causes.

The Parent Teacher Association's second ladies' pamper evening and fashion show by Jessobel Boutique was supported by local beauticians and was a great success, with all proceeds going towards the PTA's current fundraising project to install a cycle shelter at the school.

Children and parents also supported the MacMillan World's Greatest Coffee morning, baking cakes and making drinks and raising more than £300 for the charity.



Rotary fund-raiser for Children in Need

MEMBERS of Lymm Rotary Club will be out on the Cross on Saturday, November 17, raising funds for the BBC's Children in Need appeal.

The Lymm club's President, Mike Boothman said: "This is a wonderful partnership between Rotary and the BBC Children in Need which started last year and raised over £100,000. Every day, everywhere Rotary clubs work hard to improve the lives of others, especially for young people, and the people of Lymm are always supportive of causes. We just need some good weather and lots of people for our collection to be a success. Last year we raised over £700".



BUFFETS

from £5 per head

Business Lunches with FREE Delivery over £30

Tailored to your needs

Homemade Cakes, Quiches Pies, Soups and Stews!

Fresh, healthy Sandwiches
no wafer thin ham, only the best meat

TEL: 01925 763627
90 WARRINGTON ROAD,
GLAZEBURY, WA3 5NH
Email: hallsvictorian@me.com | Email buffet menu request, get 10% OFF

B.A.S

Bespoke Architectural Structures Ltd

Transform your living space or work place with specialist glazing made to the highest standard. Family based business manufacturing, supplying and installing glazing systems to the domestic and commercial market specialising in sliding folding doors: Call us now for a **FREE no obligation quotation.**



Best quality and service assured!

www.b-a-s.co.uk
Tel: **01928 579957**
Unit 1, Jensen Court, Astmoore Road, Runcorn. WA7 1FQ

THE NORTH WEST'S OAK & PINE SPECIALISTS

Quality bedroom, dining & occasional furniture

autumn
price
fall



save ££££'s
on many ranges

ENDS 30th NOVEMBER



Irene Painted with Oak Top - Dining & Occasional



Taron Painted with Oak Top - Bedroom

- Extensive showroom on 2 floors
- Over 20 stunning room sets displayed
- Expert advice & personal friendly service
- Direct delivery to your home or office





branches

The home of beautiful wood furniture

Wilderspool Causeway, Warrington WA4 6QP Tel: **01925 241869**
Store open: Mon to Sat 9am - 5.30pm Sun & Bank Holidays 11am - 4pm

Online store: www.branchesfurniturewarrington.co.uk



Want to lose upto 2 dress sizes without dieting or surgery?

Non Surgical Laser Lipo is the answer!

Instant result, non invasive & painless



Book your **FREE** consultation now! **01925 601761**

Special offer **£25 trial session.** 165 London Rd, Stockton Heath

Recycling project

KIDS Planet, Lymm and ADS Recycling in Lymm are doing a joint recycling project to raise awareness of the benefits of recycling among the children and their parents.

Young recyclers are pictured below from left, Emilee Warburton, Scarlett Kelly, Ben Keeley and Charlie Harrison all aged three.



Fire station to be built near motorways

A NEW fire station will be built at Lymm, if proposals put forward by Cheshire Fire and Rescue Service go ahead.

It would be near the M6/M56 intersection, would be manned 24 hours a day and would be used as an "operational response hub" to store specialist operational vehicles.

Staff would be transferred from Stockton Heath and Knutsford.

The project is part of an in depth review of how to deliver emergency services in Cheshire in the future.

With a £5 million budget cut expected over the next four years,

Cheshire has to devise a plan to improve services, reduce response times and also save money.

The changes would mean Stockton Heath Fire Station would change from its current day crewing arrangement to become an on-call station. The aerial appliance based there would be moved to Warrington.

Another new fire station would be built at Penketh.

Produce show beat the weather

DESPITE the wettest summer for 100 years, there were still plenty of entries for the produce show at Oughtrington Community Centre.

Poor weather and a lack of produce is thought to have increased competition for the best Victoria sponge. Winner Sarah Barber was pleased with her first place - as she'd invested in new cake tins to boost her chances.

A new category was the wildcard entry, which was won by Caroline Henderson with her raspberries.

Other notable entries were in the beer, wines and spirits, where Donald Reid took the two beer top spots and Audrey Faulkner, won first, second and third with her fruity spirits. Evie Davis won top spot with her "very cheeky" most amusing vegetable.

The show had intended to host the first gardening primary school competition, but the weather scuppered the schools' crops. However, Cherry Tree's Foundation Stage class mustered a prize winning mass entry in the Mr Cress Head competition.

WARRINGTON MB CENTRE

Independent
Mercedes & Volkswagen/Audi Group
Specialists

All repairs carried out: Exhausts, Tyres, Clutches, Diagnostics,
VAG-COM and Star Diagnostics available on-site

Have your vehicle serviced to main dealer standards from:
£100+vat for A/Oil Service* or £150+vat for Inspection/B Service*
* using semi synthetic oil

SERVICE + MOT FROM £130+VAT

01925 818180 or 07918 138231
Unit 19, Tatton Court, Woolston, Warrington WA1 4RR

£10 OFF ANY SERVICE OR REPAIR - WITH THIS VOUCHER
Not in competition with any other offer

natura
-SKIN CLINIC-

Health That Shows, Age That Doesn't

Natura Skin Clinic is a friendly, family-run private clinic in Warrington, where every single procedure is carried out in clinical safety by highly experienced doctors.

Book your free Skin Evaluation today

*Botox • Dermal Fillers • Laser Hair Removal •
Multi-Layer Skin Rejuvenation • Face & Leg
Vein Removal • Skin Tightening •
Laser Dermabrasion*

Call 01925 394 589 or visit www.naturaskinclinic.co.uk

Natura Skin Clinic • 230c Newton Road • Lowton • Warrington • WA3 2AD



Silly socks fund-raiser

CHILDREN at Statham Little Foxes Pre-school wore silly socks to raise funds for the charity STEPS as Part of Ponseti Awareness Week.

One of the Little Foxes Ted Murphy, aged two, was born with a unilateral clubfoot.

Lymm based STEPS is calling for greater awareness of Clubfoot/Talipes amongst parents and health professionals.

Ted started the Ponseti treatment in Edinburgh at the age of 1 week and continues to be treated at the Manchester Children's Hospital.

At 2 1/2 he wears a boots and bar brace every night but is otherwise just like any other normal little boy.

STEPS provided vital information and support to his Mum and Dad when he was born and helped to find someone to continue his treatment when the family relocated to Lymm earlier this year.

Clubfoot affects a staggering 1 to 2 in every 1000 babies and occurs more often in boys than girls. In about 50% of cases, both feet will be affected.

However, using the 'Ponseti method', a non-surgical, non-invasive treatment, 95% of cases will result in fully functioning, pain-free feet.

Not every hospital in the UK provides the Ponseti treatment and STEPS would like to see this change.

Ted's dad Peter, was born with clubfoot 35 years ago and underwent a series of operations as a child.

"I am very grateful that Ted has been treated using the Ponseti method" said Peter.

"The long term outcomes for Ted are likely to be much better than I have

experienced and all children born with talipes should have access to a properly trained Ponseti practitioner."

The Ponseti method involves a specific casting technique and a strict routine with a boots and bar brace which should only be undertaken by specially trained practitioners.

Poor technique and straying from the correct wearing of the boots and bar can lead to poor results.

Sue Banton, Director of STEPS, said, "People in the UK really aren't aware of the number of children who are born with clubfoot or what to do if they brace a child with the condition and we want this to change. Currently, there are no official guidelines describing the exact Ponseti Method and no governing body to ensure that practitioners are adequately trained to carry out the treatment. We would like to ensure that every parent who has a child with this condition knows what the best treatment is and where they can access it."

She added, "The purpose of our Ponseti Awareness Week is to highlight the need for consistent training and treatment for clubfoot across the UK. We have produced a booklet called 'The Parents Guide to Talipes/Clubfoot' which includes the Ponseti Method Checklist, as described by Dr Jose Morcuende (Ponseti International Association) so parents with children diagnosed with clubfoot can check if their hospital is deviating from the guidelines and whether they should be concerned."



From left, Archie aged 2, Ted Murphy aged 2, Faye aged 3 and Hayden aged 4 with preschool assistants left, Diane Harper and Nicky Kelly.



TailorMade for you...



Auto Enrolment... Are you prepared? Whether you are a large or small business, Auto Enrolment is not something you should ignore.

Experts are stating that employers should act 18 months prior to their eligibility date in order to ensure that everything is in place within the timescales given. With effect from 1st of October 2012, large scale

employers will be required to automatically enrol eligible employees into a qualifying pension scheme.

By 2018, the smallest employers will too. Many still have no idea that this is coming and, even when they do, will have no idea how to handle it.

There are 54 staging dates in total spanning October 2012 to February 2018. The largest employers (those employing 120,000 workers or more) must have a pension scheme in place from the 1st of October 2012. Employee numbers get progressively smaller as the staging

dates head towards 2018.

Running alongside are the minimum contribution levels that rise over time. For employers with staging dates to 30th of September 2017, the total minimum contribution is 2% (1% employer funded). From 1st of October 2017 to 30th of September 2018, the total minimum contribution is 5% (2% employer funded) and from the 1st of October 2018 onwards, the total minimum contribution will stand at 8% (2% employer-funded).

All 'eligible jobholders' must be automatically enrolled: this means employees aged 22 to state pension age, working in the UK and earning more than £8,105. Workers outside of these criteria may have the right to join the scheme, and the employer must supply opt-in details-but the employer is not obliged to enrol them automatically.

Employers can use any 'qualifying scheme'. This can be a defined-contribution scheme including a minimum contribution or hybrid scheme meeting certain criteria. Since Defined Benefit schemes are a

dying breed, most employers are likely to opt for the former. The pension chosen can be either an occupational or personal pension scheme. Employers can split their workforce-for example using one scheme for higher-end employees and another for lower-earning or transient ones-as long as both schemes are qualifying.

Employers must register with the Pensions Regulator (www.thepensionsregulator.gov.uk) within 4 months of their staging date to show that they have a qualifying scheme in place and re-register every 3 years. They also have to write to their employees detailing how auto-enrolment affects them and of their right to opt out within one month. Employers must re-enrol eligible employees every 3 years and must not provide any inducements to opt out.

TailorMade will be providing further guidance to businesses on this as time progresses. Should you require further information in the meantime, please do not hesitate to contact Peter Legerton.

Do you have any preserved pension arrangements? • Would you like to decide where your pension fund is invested? • Would you like all your funds in one place? • Would you like the option to put your funds into a wider variety of Investments? • Would you like a more proactive service from your pension provider? • Have you been dissatisfied with your current pensions performance? • Are you concerned about having enough income when your time comes to retire? If you answered yes to any of the above questions.

It's time to act...

For a no obligation initial consultation contact us

TailorMade House
Unit 1, Olympic Way
Olympic Park
Warrington, WA2 0YL

Contact Jo or Heather on
01925 810595
quoting ref TM4

Or e-mail:
info@tailormadegroup.co.uk
www.tailormadegroup.co.uk

*Lymm's
Little Secret*

You Are Invited

To our Open Afternoon on 15th November between 1.30pm and 8pm

The Evergreen Clinic is excited to announce our newest aesthetic clinic, nestled in the heart of Lymm.

Evergreen is a welcoming, private and highly professional clinic that offers a complete range of aesthetic treatments. Our practitioners are all highly experienced medical professionals who aim to provide the highest quality of patient care and confidentiality at all times.



Treatments include:
Botox, Dermal Fillers, Hyperhidrosis (Botox for underarm sweating), Sclerotherapy (elimination of thread veins), Lip Enhancement, Nose Reshaping, Skin Peels, Skin Resurfacing, Laser Hair Removal, Micro Needling.

The Evergreen Clinic, 19b The Cross Courtyard, Lymm, Cheshire, WA13 0HR.

Tel: 01925 756 411 Email: lymm@evergreenclinic.co.uk www.evergreenclinic.co.uk

Stuart's a winner - on wheels and on foot!

A LYMM man won two races in two weekends - one on wheels and the other on foot.

Stuart Baird, 67, won the HSCC Formula Ford race at Silverstone and followed it up a week later by winning the Veterans Class in the International OMM Mountain Marathon.

At Silverstone, Stuart won the final round of the Formula Ford Championship in a closely fought race, beating all the championship favourites, most of who were much less than half his age.

Stuart who was a top runner in both single seater and saloon car racing in the 1970s, only returned to racing this year following a 35 year layoff.

Throughout that time he never lost the urge to return to the race track, so after retiring from full time work he bought a Merlyn Mk11A Formula Ford and set about regaining some of his old speed, which he proved at Silverstone was still there.

His other passion is fell running and the following weekend he competed in the International OMM Mountain Marathon with his running partner, Lymm dentist Barry Clayton. They were winners of the Veterans Class.

This year's race was held in the Howgill Fells and was run over two days where competitors ran 60 kms involving 8,000 feet of climbing.

Competitors had to carry their own tent/clothes/food etc and were

required to sleep out on the fells overnight.

It was the third time Stuart and his partner had won this prestigious event.



Stuart after his Silverstone win and at the start of the mountain marathon.




Tapefox Ltd. Celebrating 30 years in business

Quality Kitchens & Bedrooms FAMILY BUSINESS EST. 1982

We would like to wish all our customers past, present and future a very Merry Christmas and a Happy New Year

Complete range of **Kitchens & Bedrooms** to suit all budgets with **FREE Design and Planning**

Exceptional Quality and Value

Find us on facebook: www.facebook.com/tapefox

Visit Our Website: www.tapefox.com

Culcheth Open: Tues - Fri 10am - 5pm & Sat 10am - 4pm
 St Helens Open: Mon - Thurs 8.30am - 4pm
 Fri 8.30am - 3pm Sat 10am - 1pm

14 Church Lane Culcheth 01925 766646 or Unit 11b, Brindley Road (off Reginald Road) St Helens 01744 811687



Christmas Fayre
 at **High Legh Garden Centre**

Enjoy a freshly prepared
2 course Christmas lunch in
 the **Topiary Restaurant**

Served from 1st to 23rd December 12noon to 3pm

£13.95 per person
 Includes a complimentary glass of house wine

High Legh Garden Centre, High Legh, Knutsford
 Tel: 01925 756991 • www.strikes.co.uk



All set for Lymm D



December at STATHAM LODGE
Country House Hotel

PARTY NIGHTS

Adele Tribute
Saturday 1st - £37 p.p.

Girls B Loud
Sunday 23rd - £37 p.p.

Tribute nights include a four course dinner, tribute act and late bar

DINNER DANCES
Select dates from £33 p.p.

Christmas Luncheons
Sunday—Friday £17.50 p.p.

Christmas Dinners
Monday - Thursday £17.50 p.p.

Please contact the hotel or visit our website for further information

Warrington Road, Lymm, Cheshire, WA13 9BP
www.stathamlodge.com
01925752204



FINAL preparations are being made for the 27th annual Lymm Dickensian Festival - which has become one of the biggest occasions in the community.

Town crier and local councillor Peter Powell and a team of volunteers have once again pulled out all the stops to ensure the village can look forward to a memorable event, which last year attracted around 5,000 visitors to the village.

Traders are being urged to enter into the spirit of the occasion by dressing up in period costume as Lymm turns back the clock to Dickensian times.

Local schools and charities have been given stalls free of charge - but they must be booked in advance.

Meanwhile even greater focus has been put on free entertainment this

year, especially for young children.

"There have been some concerns raised in the past about the expense of fairground rides, especially for families with more than one child, so we have put a greater emphasis on free entertainment this year," said Peter.

The event has moved with the times and not only has a website at www.lymmdickensian.org but it now also has a facebook page at www.facebook.com/pages/Lymm-Dickensian-Christmas-Festival which includes all the latest up to date information.

Visit the website for contact details or call Peter on 01925 754793.



Santa Claus is c

FATHER Christmas will once again be teaming up with the Rotary Club of Lymm for their annual street collection - which is the group's biggest single fund-raiser of the year.

The float will take to the road on Tuesday December 4th, visiting various streets around the community, culminating with a final appearance on Lymm Cross on Saturday December 22nd.

Santa and his helpers will also be taking part in Dickensian Day. Santa will be out and about on the following dates:

Tues 4
Booths Hill (1) - Assemble: Dingle Bank Close, Lakeside Road, Baycliffe, Elmtree Rd, Oaklands, Parkwood, Cherry La (upper), Lady Acre Cl, Huntsfield Dr, Booth La, Highfield Dr, Hilltop Rd, Highfield Rd (top).

Wed 5
Booths Hill (2) - Assemble: CO-OP Store Cherry La, Cherry La (lower), Cherry Tree Av, Old Smithy La, Wychwood Av, Heyes Dr, Edgerton Rd, Hardy Rd, Highfield Rd (lower), Massey Brook, Massey Av.

Thur 6
Booths Hill (3) - Assemble: Camsley La Garage, Booths Hill Rd, Princess Rd, John Rd, David Rd, Thornley Rd, Barsbank, Barsbank Clo, Daisy Bank Rd, Oak Rd, Moston St, Ridgeway Gdns, Grove Av, The Anchorage, Eagle Brow, Brookfield Rd, Maltmans Rd.

Fri 7
Statham - Assemble: Lymm Hotel, Statham Av, Statham Clo, Statham Dr, Lymington Av, Star La, Pool La, Brookside Ave, Oldfield Rd, Warrington Rd, Turnbury Cl, Whitesands Rd, Jubilee Gdns, West Heath, Albany Rd, Northway, Sycamore, Albany Dr, Albany Cres. Whitbarrow Rd.

Sat 8
Dickensian Day

Mon 10
Oughtrington/Sandy La - Assem-

ble: Oughtrington Cres, Stage La, The Paddocks, Crown Grn, Whitebroom, Sandy La Hopefield Rd, Ashcroft Rd, Woodbine Rd, Birchfield Rd, Cedarfield Rd, Sandy Lane, Rushgreen Rd.

Tues 11
Thelwall (1) - Assemble: All Saints Drive, Woodlands Dr, Stanton Rd, Pickering Clo, Moore Av, Parry Dr Selworthy Dr, Beech Av, Barley Rd, Dunmow Rd, Pelham Rd, Welwyn Clo, Harlow Clo, Walden Clo.

Wed 12
Rotary Xmas Party

Thur 13
Thelwall (2) - Assemble: Ollerton Close, Bradshaw La, Mottram Clo, Richmond Av, Prestbury Dr, Alderly Rd, Wilmslow Cres.

Fri 14
Rushgreen (3) - Assemble: Mardale Cres, Mardale Cres, Gasmere Rd, Rushgreen Rd, Reddish Cres, Linden Clo, Reddish La, Bollin Dr, Bollin Cl, St Peters Cl, Rush Gdns.

Sat 15
Sainsburys Warrington

Mon 17
Rushgreen (1) - Assemble: Farmers Arms, Ruses Meadow, Heatley Manor, Springfield Ave, Rushgreen Rd, Springbank Gds, Green Vw, Adey Rd.

Tues 18
Rushgreen (2) - Assemble :

Trattoria

BACI



18 The Cross, Lymm.
Tel: 756067



Bramble Lodge
PRIVATE DAY NURSERY

Birth - 5 years

Good quality childcare and education in a homely environment.

Next to Lymm High School

www.bramblelodge.co.uk

01925 757597
36 Oughtrington Lane • Lymm

Souvenir
Programme

Dickensian Christmas Festival

**Saturday, 8th December, 2012
from 11am**

For more information visit www.lymmdickensian.org

Supported by



**ROTARY CLUB
OF LYMM**



**Lymm
Parish Council**

Don't forget!

Carols around the Cross
Christmas Eve 7-8pm – All Welcome



Are you looking for a good time while helping others?

Over the past six years, Lymm Rotary Club has donated more than £35,000 to local charities and also tackled worldwide issues including polio

The Rotary Club of Lymm

Come and join us and have fun while helping your local community

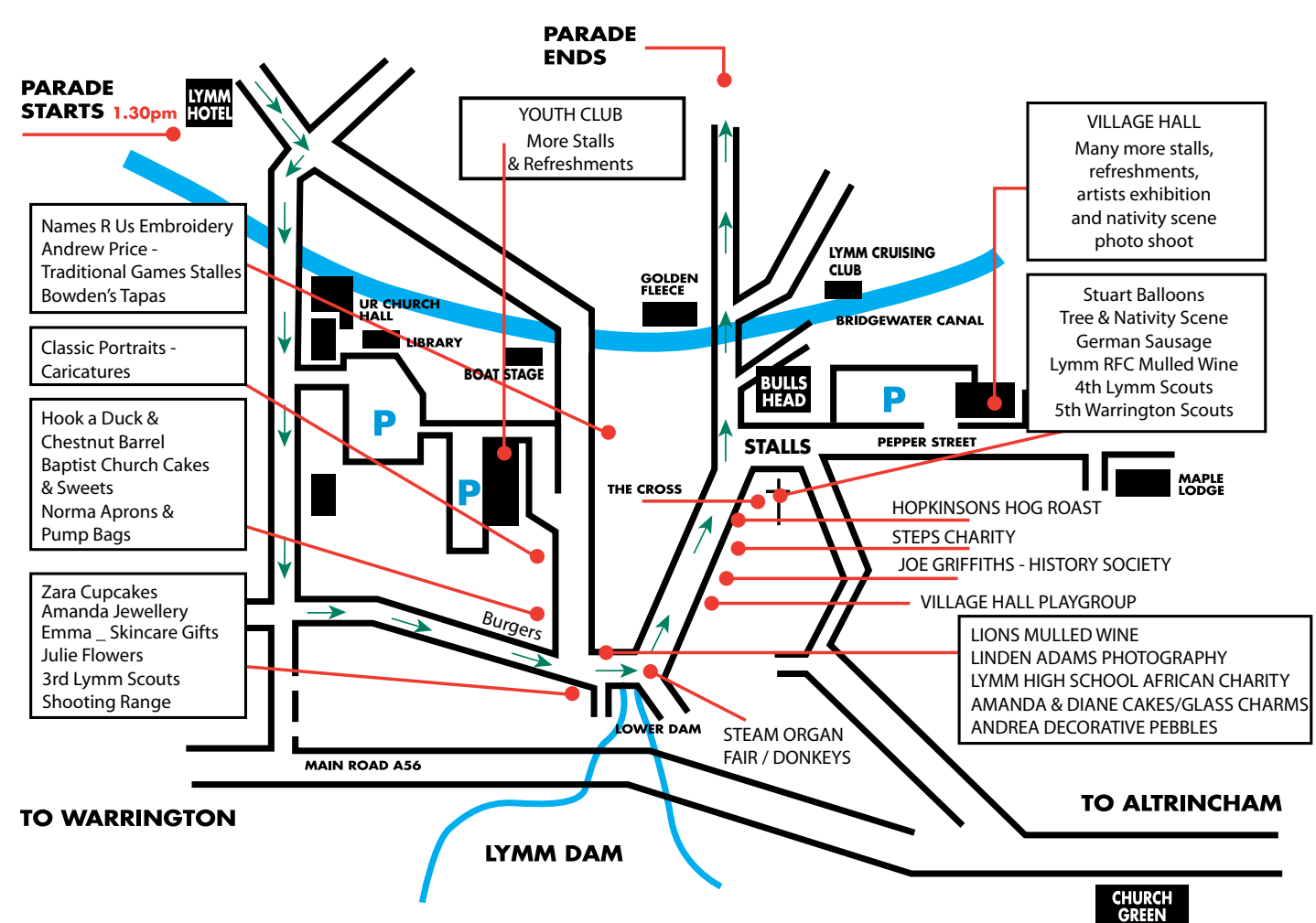
Contact Club Secretary Mike Boothman for further details on

01925 754343

Grand Parade

(Starts 1.30pm, Lymm Hotel)

- Town Crier
- The Boys' Brigade Band
- Horse Drawn Carriage (Covered)
- Horse Drawn Carriage (Open)
- Donkey Carriage
- Vintage Car
- Vintage Car
- Vintage Car
- Vintage Car
- Warrington Brass Band
- Ravenbank School
- Cherry Tree School
- Statham Lodge
- Little Bollington School
- Oughtlington School
- Father Christmas Float
- Clowns
- Rogers Irish Dancers
- Youth Club
- Low Carbon Lymm
- Earl Stamford Morris Men
- Seven Swords Dancers
- Bollin Morris Men
- Clowns
- Warrington Pipe Band



A very big 'Thank You' to all the generous sponsors, local societies and friends without whom this day would not be possible

Please support those who support us by looking out for the red posters in shop windows!



ADCOTT OPTICIANS	CATEUS CADEUX	PUURE	STAN JAMES	THE LYMM ARTISTS
ARCHES	BEE CHIC	HOPKINSONS BUTCHERS	XROSS INTERIORS	BOWDEN'S
THE HAIR STUDIO	HARRISON'S STATIONERS	KARL WELSH FLORIST	THE TERRACE HOPKINSONS DELICATESSEN	LAWLERS HAIRDRESSERS
LAURA'S CHOICE	LYMM ROUND TABLE	CHESHIRE SET NAIL BOUTIQUE	THE SWEET SHOP	LYMM LIFE
LYMM PARISH COUNCIL	W H LILL SOLICITORS	GASCOIGNE HALMAN	BANNER & CO ESTATE AGENTS	YOUTH & COMMUNITY CENTRE
RUSHGREEN SERVICE STATION	BARCLAYS BANK	RIDGEWAY RESIDENTIAL ESTATE AGENTS	SWEENEY TODDS	SAINSBURYS
SEXTONS VILLAGE BAKERY	FLAVOURS & ELMAS RESTAURANTS	SADDLERS	SPREAD EAGLE	LYMM CHIP SHOP
CHESHIRE BUILDING SOCIETY	LYMM FESTIVITIES COMMITTEE	JOHN EMBLETON	GOLDEN FLEECE	ROTARY CLUB OF LYMM
MIKE TANDY JOHN BURROWS	CLOTHES BOX	BACCI ITALIAN RESTAURANT	LYMM ELECTRIC	CAFE SALAR
				THE VENUE

Dickensian Festival



GASCOIGNE HALMAN
 THE AREA'S LEADING INDEPENDENT ESTATE AGENCY
 Newly Refurbished Shop at
 6 The Cross
 Lymm, WA13 0HP
01925 758345
 lymm@gascoignehalman.co.uk

WILLIAM H. LILL + Co.
 Your local solicitor specialising in:-
 Conveyancing
 Wills & Probate
 Accident & Personal Injuries
 Divorce & Family Law
 A friendly service for all your legal needs
 Telephone: 753170 / 755668
 9 The Cross, Lymm WA13 0NY

Coming to Lymm!

Howard Avenue, Howard Av, Lodge Cl, Richmond Dr, Church Vw, Bucklow Gardens, Bellsfield Clo, Whitefield Gro, Warburton, Peters Clo, The Greenacre.

Woodlands Dr, Longbutt La, Cotebrook Hse, Oughtrington Lane, Foxley Clo, Higher La, Bellfield Clo.

Wed 19
 Higher La (1) - Assemble: Crouchley La, Crouchley La, Manor Rd, Higher La, The Crescent, Mayfield Vw, Greenwood Rd, The Hatchings, Higher La, Grammar School Rd, Scholars Grn, Limefield Av.

Fri 21
 Village - Assemble: Davies Way Car Park, Danebank Rd, LymmHay La, Brooklyn Dr, New Rd, Millbank, The Cross, Pepper St, Grove Rs, Rose Bank, Hartly Clo, Crossfield Av, Racefield Clo, Cyril Bell Clo, Orchard Ave, Fairfield Rd, The Peppers, Rectory La, Rectory Gds.

Thur 20
 Higher La (2) - Assemble: Woodlands Av, Woodlands Ave,

Sat 22
 Lymm Cross.

LYMM PARISH COUNCIL
 Lymm Parish Council are pleased to support Lymm Dickensian Festival

Ree Chic
 17 The Cross, Lymm, Cheshire
 Tel: 01925 756683
 Ree Chic Total Look Fashion Concept



Santa with Alba Gallego and Rotarians Ted Thorpe (left) and John Beard.

Bears Paw
 Country Inn & Restaurant
Monday Evening Steak & Wine Night - 6pm til 9pm
 2 Steaks (Rump Steak, Salmon, Pork & Black Pudding or Gammon) plus a bottle of Wine (Red, White or Rosé House Wine)
Only £25 per couple
 Now taking bookings for our **Christmas Fayre**
 2 Courses £15.95 or 3 Courses £19.95 from Sat 1st December to Christmas Eve
 Open ALL DAY Sundays 12 til 8.30pm
 Tel: 01925 752573 Warrington Road, High Legh

LYMM METALS Buyers of All Scrap Metals Specialists in Computer Scrap
Copper • Brass • Lead • Steel • Gold
Silver and High Value Metals
TEL: 01925 756376 MOB: 07831 107525
 Heathfield, 22 Oughtrington Lane, Lymm WA13 0RD
 Waste Licence No. CMS/134 720

Mason's fitness opens at the White Rooms

MASON'S fitness at The White Rooms, Lymm, held a highly successful open day recently.

Part of Paul Mason fitness group that includes Cheshire personal training, they have over 30 years experience in the health fitness and well being industry, providing bespoke personal training, small group personal training, nutrition and dietician services, classes and much more, using the latest techniques and cutting edge research.

Managing Director Paul Mason said: "A long with the White rooms team, we intend to become THE place to go for health fitness and well being information and advice in Lymm, Knutsford, Warrington and various other locations around the Northwest.

"We want to work with all the local community groups, businesses, schools, families and anyone who wishes to utilise our skills and expertise to improve the health fitness and wellbeing of the village of Lymm.

Motivation

"Working closely with a dedicated personal trainer provides a high level of motivation and close monitoring to make sure you meet your goals:

"Our personal trainers assess your strengths and weaknesses to tailor programmes that suit your lifestyle and educate on other aspects of well being including general health and

nutrition."

What to expect at Mason's:

- Free consultation and 30 minute taster session for all who present the advert in Lymm life
- Consultation to discuss your goals
- Customised Nutrition plan
- Unique bespoke training programme
- Regular monitoring of both body statistics and fitness levels
- Guaranteed results or your money back
- We will come and do free, talks and information sessions for all local groups, schools, charities just contact us to arrange.

Paul added: "We would like to thank various local business for their help and support in making a great start to a long term future in Lymm. Sarah and her team from Sextons for the great food, Sharon and Steph at Mood Design, Neil at Natural Focus photography, Ken who runs lymm.com and finally Gary at Lymm Life.

Which other personal trainer, gym or fitness professionals offer that money back guarantee?

For further information please call Paul on 07960 231178 or The White Rooms on 01925 752333 or email paulmason@paulmasonfitness.com or visit www.paulmasonfitness.com





**Free consultation
and 30 minute
taster session on
production of
this advert**



masons fitness

**Small group
specialist training
(classes usually
1 hour for upto
10 people)**

**Get into that
Little Black Dress
in time for
Christmas**

Based in Lymm, at The White Rooms, Masons Fitness is a new and unique style of fitness training.

Offering one to one personal training, group training of 2 - 4 people, nutritional advice and all with **100 % Money Back Guarantee** if you're not satisfied with the results.

The White Rooms • 11 New Road • Lymm • Cheshire
T: 07960 231178 E: paulmason@paulmasonfitness.com

Cut out & keep!



It's all going on in Warrington

THIS CHRISTMAS!

Network Warrington's early Christmas present to you - catch the bus with single fares from £1 or park & ride! Visit www.networkwarrington.co.uk to find out more.

Visit website for further details

What's On, Where & When...

- Christmas Lights Switch On – Friday 16 November – Golden Square / Market Gate, from 3pm
 - St. Andrew's Day Festival – Saturday 1 December – Bridge Street / Market Gate
 - Christmas at the Children's Zoo – Sunday 2 December – Walton Hall & Gardens
 - Christmas Gift Cabins – 2-8 December – Market Gate
 - Street Animation – 1, 8, 15 & 22 December – Bridge Street
 - Santa's Workshop – 8, 15 & 22 December – Bridge Street
 - Vienna Festival Ballet presents *The Nutcracker* – Saturday 8 December – Parr Hall, 2.30pm
 - Walton Winterland – 8-9, 15-16, 22-23 December – Walton Hall & Gardens
 - Christmas Carvery Lunch – 9, 15 & 23 December – Walton Hall & Gardens
 - Warrington Lantern Parade – Thursday 13 December – Queen's Gardens, 6.30pm & 7.30pm
 - Light Spectacular – Thursday 13 December – Town Hall, 7.15pm
 - Ken Dodd – Thursday 13 December – Parr Hall, 7.30pm
 - Houghton Weavers – 13 & 14 December – Pyramid, 7.30pm
 - Christmas in the Cultural Quarter – 13-16 December – Queen's Gardens, from 7.30pm
 - Christmas Comedy Store – Saturday 15 December – Pyramid, 7.30pm
 - Kate Rusby – Tuesday 18 December – Parr Hall, 7.30pm
 - Mother Goose (Panto) – 4-13 January – Parr Hall
 - Radio Warrington 87.8FM at Christmas – Tune in from 12 November – 9 December
- Plus... A range of exhibitions and activities taking place at Warrington Museum & Art Gallery, Monday to Saturday, throughout the festive period.



www.itsallgoingoninwarrington.co.uk



Culture Warrington



All the details in this guide are correct at the time of print. For the most up to date information please visit www.itsallgoingoninwarrington.co.uk

Motoring

A glimpse of the future

AUDI have provided a glimpse of the future with its crosslane coupe concept car - a new fusion of technology, engineering and design.

The vehicle breaks new ground in terms of weight, costs and energy usage over its lifecycle, and is an evolutionary stage of Audi ultra - the lightweight construction principle from Audi.

An innovative and efficient plug-in hybrid drive based on a purpose-designed.

1.5-litre three-cylinder TFSI and two electric motors redefines the benchmark, with potential fuel economy returns equivalent to 256.8 mpg and CO2 emissions of just 26 grams per km.

The result is a sophisticated vehicle that will appeal to young customers in particular, thanks to a removable roof and the customisable services available under the Audi connect concept.

The Multimaterial Space Frame of the compact coupe comprises three materials - aluminium, carbon fibre-reinforced polymer (CFRP) and glass fibre-reinforced polymer (GFRP). The car has an unladen weight of about 1,390 kg, including the large lithium-ion battery.

The plug-in hybrid drive, which is described as a dual-mode hybrid, is as innovative as it is efficient. It comprises a combustion engine, two electric motors and a single-stage transmission. It sprints from zero to 62mph in 8.6 seconds, and in pure electric mode takes 9.8 seconds. The car's top speed is 113mph. It offers the potential for up to 256.8mpg and emits 26 grams per km of CO2. The lithium-ion battery has an output of 17.4 kWh, sufficient for an operating range of around 53 miles in the electric mode.

The car is classed as a 2+2-seater and is 4.21 metres long, 1.88 metres wide and 1.51 metres high, with a wheelbase of 2.56 metres. Its body design comes across as powerful and striking, and it already provides a foretaste of the design language of a future generation of Audi Q models.



Indish

BAR, RESTAURANT & TAKEAWAY

CONTEMPORARY INDIAN CUISINE

NOW OPEN!
in **Stockton Heath**

Christmas bookings now being taken

Book now for reservations: 01925 861818 | 01925 861919
33 Walton Road, Stockton Heath | www.indishindian.co.uk

Dining Out with *Lymm Life*

at The Black Swan

STEEPED in history the Black Swan at Rixton is just a short journey over Warburton Bridge where a warm welcome awaits from manager Stuart and his friendly team.

There has been an Inn on the site of the Black Swan since the 1700's when Manchester Road was a main highway between the port of Liverpool and the city of Manchester.

The pub is a focal point of the village and while undergoing some modernisation and development work it still retains a traditional country pub feel with a fine selection of traditional meals and drinks.

The very fact it has been awarded The Community Pub of the Year 2012 by CAMRA North Cheshire, speaks volumes for the premises.

The venue is suitable for a general meal out or a special occasion. We started with a tomato soup, which was freshly made and piping hot. This was followed by Beer Battered Fish and Chips - Fresh beer battered cod fillet served with homemade chips, mushy peas and homemade tartare sauce.

Our other main course was an 8oz Sirloin Steak served with homemade chips, garden peas, tomato and mushrooms.

Both meals were well presented and very enjoyable. Sweets change on a regular basis and we went for the cheesecake which was again well presented on a slate board.

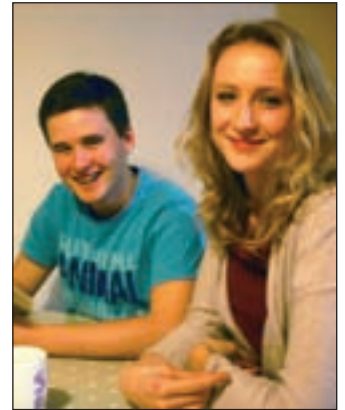


Get hooked on books

JUST English, Lymm based Tuition service, have set up a reading group run by students for students.

Jake Dyble and Anna Hulme are set to lead the monthly meetings with the aim of challenging and taking readers out of their comfort zone.

"Having set up many reading groups in schools there are two important factors: good books and great refreshments...that's why I'm so delighted the Coffee House have agreed to us using their premises" said Wendy from Just English. Aim high, get reading. Interested? Contact Wendy or Anna on mobile 07863888599 or landline 758240



New role for Terry Waite

FORMER Lymm resident Terry Waite is the new president of Chester Music Society.

He succeeds Professor Sir Bernard Lovell, who died in August after 41 years as the society's president.

Mr Waite, who is already patron of Warrington Male Voice Choir, was educated at Stockton Heath Secondary School, where he was head boy. He went on to higher education in London and later was appointed as an adviser to the Archbishop of Canterbury, travelling the world and negotiating the release of several hostages in Iran.

But in 1987 he was himself taken hostage and held in Beirut for almost five years, four of which were in solitary confinement.

Chester Music Society chairman David Woods said: "We are greatly honoured to have Terry Waite as our new president. We look forward to a close and fruitful working relationship in the years to come."

THE RIXTON ROOM
OPEN FROM
DEC 2012

DON'T MISS OUT ON:
SANTA'S SUNDAY LUNCH
CHRISTMAS EVE
CANDLE LIT DINNER
CHRISTMAS DAY

JOIN US FOR OUR
JAMES BOND
THEMED NEW YEAR'S
GALA DINNER;

GLASS OF BUBBLY ON ARRIVAL
FOLLOWED BY A DELECTABLE
FOUR COURSE MEAL
AND GREAT ENTERTAINMENT

NORTH CHESHIRE
COMMUNITY
PUB OF
THE YEAR
2012

FOR BOOKINGS & ENQUIRIES
TEL: 0161 222 4444
WWW.THEBLACKSWAN.CO.UK
EVENTS@THEBLACKSWAN.CO.UK
MANCHESTER RD, HOLLINS GREEN
WARRINGTON, WA3 6LA

SCAN CODE FOR
A SPECIAL OFFER

BOWDON PLACE

SAINT ANNE'S GARDENS

AN EXCLUSIVE GRADE II LISTED DEVELOPMENT
OF LUXURY TWO & THREE BEDROOM APARTMENTS



Located on Higher Downs

Prices From : £464,950

- Beautifully converted apartments in a historic Grade II Listed building
- Bright & spacious homes with bi fold doors leading to private terraces
- Exclusive gated development with allocated parking in sought after location
- Bespoke fitted kitchens with granite work surfaces and integrated appliances
- Luxury bathrooms featuring Villeroy & Boch sanitaryware
- 95% Mortgages available via the government's 'NewBuy' scheme



LAST TWO NOW RELEASED

CALL 0161 929 6911 | OR VISIT bowdonplace.co.uk

Marketing suite open Thursday to Monday from 10am until 5pm
Higher Downs | Woodville Rd | Altrincham | Cheshire | WA14 2AQ

□□□ BREATHING NEW LIFE INTO BRITAIN'S HISTORIC BUILDINGS

livepey

Luxury homes nominated for heritage award

A MAJOR project to transform a boarded-up and neglected hospital site into luxury homes has been nominated for a heritage award.

The former St Anne's Hospital site at Bowdon - which consists of three Victorian buildings - has been painstakingly renovated and converted into 23 unique homes in landscaped grounds.

Praised

Developers the PJ Livesey Group was praised for community consultation and its "respect for and understanding" of the site when granted planning permission and has been put forward as Developer of the Year.

Two of the fine 19th century buildings, the distinctive butterfly shaped Crossley Wing and the red brick Dunham Building are now complete and occupied and the finishing touches are being made to the grandest of the trio, The Beeches.

Built originally as the home of John Sidebotham and his wife Anne, the large villa was converted in 1885, to house patients suffering from consumption and started the hospital which was named after Anne.

Its Italianate lines and distinctive cream brick were obscured over the years as the hospital grew but

Liveseys have restored it to its former glory.

The Beeches has now been converted into seven exclusive apartments, accessed through a dramatic foyer lined with huge mirrors and lit by two chandeliers.

The ground floor apartments are all sold and occupied and the final two apartments are now released.

Plot 6 is a three bedroom home and will be opened as a fully dressed show home.

It has a huge drawing room and separate kitchen and dining area and a large roof top terrace perfect for relaxing.

Plot 24 is a quirky and intriguing two bedroom duplex that will suit someone who likes the unexpected. The bedrooms are on the first floor and a flight of stairs lead to a kitchen-dining area and a large living-dining area with double doors out onto a private roof terrace with views of the tree tops.

For more information and to make an appointment to view please ring Gloria on 0161 929 6911 or go to www.bowdonplace.co.uk



Obituary

Joan Gage

THE funeral has taken place of Joan Gage, aged 91, of Howard Avenue, Lymm, who died at the home of her son, Paul, at Kingsley on September 25. The service took place at Altrincham Crematorium on October 4.

Mrs Gage had lived in Lymm for the last 20 years, enjoying the company of good neighbours.

Funeral arrangements were by John Burrows and Sons of Lymm.

Established 1878

John Burrows & Sons

Independent Family

Funeral Directors

M. G. Tandy
J. A. Tandy

16 Higher Lane, Lymm
Tel: 01925 752501

THE LYMM HOTEL FESTIVE CELEBRATIONS



TAKE AWAY ALL THE HASSLE OF ORGANISING YOUR CHRISTMAS PARTY THIS YEAR BY CHOOSING THE LYMM HOTEL NEAR WARRINGTON.

Christmas Party Nights from

£19.95

per adult

Number of dates still available

Turn your party into an overnight stay

£34.00

per person per night

Bed & Breakfast

Bookings for Christmas Day lunch and New Year's Eve celebrations are still being taken.

Call 0844 879 9047 or visit www.MacdonaldHotels.co.uk/Lymm for more information

The Lymm Hotel, Whitbarrow Road, Lymm, Warrington, Cheshire WA13 9AQ



Kitchens & Bedrooms by BenEllaby Ltd



WE'RE STILL IN BUSINESS!

Unfortunately due to the decision by our landlord to sell the premises in Church Road we have had to relocate to our factory for the time being.

Designed, Manufactured and Installed by Craftsmen with a combined experience of over 90 years in the Kitchen and Bedroom industry.

Styles to suit all tastes. Budget to suit all pockets.

For a free no obligation quote call
07854 457 936 / 01925 755 040
www.benellaby.com

See things more clearly this **Christmas**

Buy any varifocal lenses this November or December and receive a *free upgrade* to the next tier of varifocal lenses*.



*selected products in 2012 only.



adcott opticians

14a The Cross, Lymm, WA13 0HP Tel: 01925 757075

Lymm Osteopathic Practice
Established 1979

SUZETTE PULMAN, N.D. M.R.N. D.O.
 Registered Naturopath & Osteopath

DARREN HAYWARD, B.Sc. (Ost)
 Registered Osteopath

We are both registered with The General Osteopathic Council (G.O.Sc.)

Open Monday to Saturday
Tel: 01925 752264
 The Rise, 16 Grammar School Road, Lymm WA13 0BQ
(Easy Access Road Parking)
Registered with all major insurance companies

Now Open Sundays!

bhajis
 TAKEAWAY

Excellent food hygiene rating ★★★★★

We only use the finest and freshest ingredients for our special and traditional dishes.
 Outside catering also available.

Exciting New Menu - Now Available

TEL: 01925 752156
 15 THE CROSS, LYMM WA13 0HR
 www.bhajistakeaway.co.uk



Taste of the Rope menu
 2 courses £13.50
 3 courses £15.95

NOW TAKING BOOKINGS FOR CHRISTMAS



Donham Massey | Altrincham | Cheshire | WA14 5RP
 t: 0161 927 2901 | e: ropeandanchor@twolves.co.uk
 www.thenopeandanchor.co.uk **BE YOURSELF**



JOLLY THRESHER



30th November - Poppy Bridge Live Music
 7th and 14th December - Party Nights with The O'Grady Show
 28th December - Monty Scott The Entertainer
 Christmas Eve - Party Night

Tel: 01925 752265
 Higher Lane - Broomedge - Lymm, Cheshire

Warrington Fire Surrounds
Fires, Fireplaces, Marble

Quality Fireplaces at Affordable Prices

A Full Range of Discounted Fires & Fireplaces
 Living Flame Gas Fires & Electric Fires

www.warrington-fires.co.uk

Oak Surrounds from £149 • Electric Fires from £159
 Marble Fireplaces from £295
 Fire Surrounds with Downlight from £199

Quality, Value, Service Guaranteed

Tel: 01925 417731
 8 Lovely Lane, Warrington Cheshire, WA5 1NF

Supplying Fires to Lymm for 14 Years



We offer 8% management charge to new landlords

Property Consultants Residential and Commercial Landlords & Tenants urgently wanted!



1a Heatley Mere Business Centre
 Chaise Meadow
 Lymm, Cheshire WA13 9EL

Tel: 01925 757555 / 01925 600101
john@landslets.com
www.landslets.com

Cycling in the footsteps of heroes

A LOCAL man whose father-in-law took part in the D-Day landings is preparing to cycle hundreds of miles across the fields of Normandy to raise funds for communities wrecked by war.

Peter Stott, 63, from Heatley, will ride in the charity D-Day cycle challenge next June - tracing the steps of those who fought their way through Normandy during World War 2.

The event will raise funds for Manchester-based Nobel Peace Prize-winning charity, MAG (the Mines Advisory Group), whose work to clear landmines and destroy weapons helps some of the world's poorest people rebuild their lives after war.

Peter is encouraging people to sponsor his two-wheel test in memory of his father-in-law and Royal Naval telegraphist, Tony Young, who fought in a Combined Operations Bombardment Unit (COBU).

Said Peter: "What those men went through was incredible.

"My father-in-law was at D-Day, and wrote his memoirs of the whole thing - from the secret training, through the day itself, to the aftermath. They're extremely moving."

The cycle challenge will track an allied soldier's journey from Portsmouth to Normandy, where on June 6, 1944, the COBU landed for the historic Allied assault on German-occupied France.

Operation Overlord, or 'D-Day' as it became known, marked the start of the invasion of Europe and signalled a major turning point in the Second World War.

MAG organiser Lesley Achim, said there is already lots of interest in the "heritage cycle" by those keen to pay homage to their heroic ancestors or family currently serving as part of the British Forces.

She said: "Our participants range from history enthusiasts to those who simply want to support MAG's life-saving work. But for many it's an opportunity to pay homage to family heroes who played a part in one of the 20th century's defining moments.

"We're keen to bring together as many as possible of the descendants of those courageous men."

More details are available at www.maginternational.org/ddaycycle / or by contacting Lesley on 0161 238 4886 or email Lesley.Achim@maginternational.org

Thank you

DIANA Struthers, wife of the late Walter Struthers, whose death was reported in the October edition of Lymm Life, would like to thank most sincerely everyone who sent flowers, cards and donations which amounted to just under £800.

This money has been divided between Blind Veterans UK and Smile Train.

Diana would also like to thank everyone for all their kindness shown to her.

CLASSIFIED

Call 0800 955 5247 to advertise

AIR CONDITIONING

CLIMATE CONTROL BY WARRINGTON based 4 Seasons, for offices, shops, surgeries, schools, homes and conservatories like yours! Installed in a day guaranteed 5 years. Keeping you cool when it's hot and warm when it's not. www.4sac.co.uk 01925 756620 (612/12)

BATHROOMS

The Bathroom Refurbishment Co.
We can create the Bathroom of your dreams
One Warrington based Company
One Job from start to finish
Unique 3D virtual CAD design system
Please visit our website
www.bathroomrefurbishment.co.uk
Please Ring Wayne
01925 826 828 or
07976 574 828 (61)

LYMM KITCHEN & BATHROOM PROFESSIONAL INSTALLATION. Ceramic wall & floor tiling. For free estimates and advice contact **Rob Evans on 01925 753752 business or 0763 770408 mobile.** Est 2002. Local references provided (13/13)

BUILDING SERVICES

BRICKLAYER AVAILABLE for garden walls, pointing etc. Tel: 01925 755441 Mobile: 07966 491624 (65/13)

BUSINESS OPPORTUNITIES

ENTHUSIASTIC MOTIVATED PEOPLE wanted to earn an extra income working from home or as an add on to an existing business. Visit www.earnings4me.com for details or call **Andy or Tina 01925 268787.** (64/13)

Lymm Life

also offers a cost effective local leaflet delivery service at competitive prices. We can also design and print leaflets with our in-house design team.

Call us now on
0800 955 5247

CAKES

Now taking Christmas Cake orders!

email: info@thelittlevelvetcakeco.co.uk
website: www.thelittlevelvetcakeco.co.uk (612/12)

CARPETS, CURTAINS & INTERIORS

CURTAINS, CARPETS, VINYLs, blinds, wall paper, top brands including Harlequin, Jane Churchill and Casadeco. Made to measure by friendly knowledgeable staff. Free carpet uplift and removal with any new carpet purchase. **Xross Interiors, The Cross, Lymm Tel 01925 758298 or email xrossinteriors@live.co.uk** (63/13)

CUSTOM-MADE curtains and loose covers. All accessories supplied and fitted. Made-to-measure blinds. Our fabric or yours. Tel: **Orchard Soft Furnishings 01925 756388.** (72/13)

Paul Bains Flooring Solutions Ltd

- CARPETS - WOOD - LAMINATES -
- DECORATIVE VINYL FLOORING -
- FREE CHOOSE AT HOME SERVICE -

101 Bucklow Gardens, Lymm WA13 9RN
T: 01925 748549 M: 07973 376224
E: paulbainsflooring@msn.com
www.paulbainsflooringsolutions.co.uk (66/13)

CARPET CLEANING

A1 STAINBUSTERS: Fully guaranteed carpet and upholstery deep dry cleaning. Clean & dry in only ONE hour. Quotes for both commercial and domestic. Contact the Local expert **John Latham on 01925 205210 or 07765 314080** (14/13)

SIMPLY THE BEST CARPET CLEAN YOU WILL EVER have. Cleaners UK Ltd. Est 23 yrs. Have your carpets & sofas beautifully deep cleaned leaving them fresh smelling & colour restored. Latest & best methods. Dry/steam. Professional, reliable & affordable. For more info call **Neil Riley on 01925 264989/07831 336060 www.cleaners-uk.net** (12/12)

CLEANING SERVICES

- Spring Clean Specialists
- Presenting your home for sale
- Moving house
- After building work cleans

01925 266834
because you're worth it!

SIMPLY THE BEST CARPET CLEAN YOU WILL EVER have. Cleaners UK Ltd. Est 23 yrs. Have your carpets & sofas beautifully deep cleaned leaving them fresh smelling & colour restored. Latest & best methods. Dry/steam. Professional, reliable & affordable. For more info call **Neil Riley on 01925 264989/07831 336060 www.cleaners-uk.net** (12/12)

DELIVERY SERVICES

FURNITURE FERRY LIGHT REMOVALS. Collections arranged from Ikea, Costco and other stores, garden centres, auctions etc. You choose, you buy, I deliver - SIMPLE. Reliable, inexpensive service. Tel: **Matt 07970 178 333 or 01942 732768. www.furnitureferry.co.uk** (15/13)

ELECTRICAL CONTRACTORS

EVERGREEN ELECTRICAL CONTRACTING. NICEIC approved contractor. For lights and sockets to rewires, fuse-box upgrades. Qualified electrician. All work is to the latest IEE wiring regulations. No job too small. Most major credit and debit cards accepted. Tel: **David on 01925 724219 / 07971 407022.** (17/13)

TRUST PROPERTY ELECTRICAL SERVICES. NICEIC Part P Approved Contractor. All Electrical work undertaken. Inspection & Testing & PAT Testing. All work certified & guaranteed. Call **Tim on 07754409906 or 01925 601055** (63/13)

EQUESTRIAN

LYMM RIDING SCHOOL. Learn to ride with friendly atmosphere, group lessons or private. Horses/ponies well schooled. Lessons from £10, pony days and parties for all needs available. please ring for more details. Training for exams. **Rebecca Bennett RegAl. 01925 750435. Mob 07778 866006.** (72/13)

EQUESTRIAN SUPPLIES & ANIMAL FEEDS

STABLES SADDLERY. Est 1964. Good stock of all equestrian supplies and animal feeds. Also storage available for trailers, caravans and household goods etc. Tel: **Barbara Williams on Lymm 752762.** (61/13)

FIRES & FIRE SURROUNDS

Quality Fireplaces at Affordable Prices

WARRINGTON FIRE SURROUNDS

Fires, Fireplaces, Marble Best Prices

Quality Value Service Guaranteed
01925 417731
www.warrington-fires.co.uk
8 Lovely Lane, Warrington (follow signs for hospital) (67)

FRENCH POLISHER

RAFAEL MELONI. FRENCH POLISHER, 25 Years experience Domestic, contract, antiques. Furniture, staircases, doors. Sand and re-finish wooden floors. Call **01925 266943 or mob 07811629738. www.raf-frenchpolisher.co.uk** (12/12)

GARDENING SERVICES

Beechwood Industries Ltd

- Garden Maintenance
- Lawn Care
- Landscape Design
- Construction
- Paving
- Tree Surgery
- Free Assessment
- Free Consultation

Contact us on:
07749 253 308
01925 860544
www.beechwoodindustries.co.uk (69)

DUTTONS MOWERWORLD

Your local garden machinery specialist

SALES • SERVICE • SPARES • HIRE

Tel: 01925 740217
The Smithy, Doreberg, Warrington WA4 4AJ
www.duttonsmowerworld.co.uk (15/13)

CLASSIFIED

Call 0800 955 5247 to advertise

GARDENING SERVICES

J C SLAVIN
Landscapes & Garden Maintenance
Flagging • Driveways • Tree/Hedge Pruning
Garden Clearance • Fencing • Landscaping
01925 756 839
Mob: 07599 747 373
www.jcslavinlandscapes.co.uk (082/13)

J D S
LANDSCAPE & GENERAL BUILDING SERVICES (LYMM BASED)
Garden Design • Driveways
Patios • Garden Walls • Fencing
Decking • Resin Bond Driveways
See website for examples
Tel: 01925 754883 Mob: 07515 967735
www.jdscreate.com (012/12)

LAWN DRAINAGE AND SOIL AERATION. No trenches, no drainpipes, no digging, no repairs, no hassle. If this interests you **Contact Bob Harper 01925 266852 or 07952 608701.** (13/13)

M J NEEDHAM LANDSCAPES Award winning with over 15 years experience. All aspects of landscaping, specialist in bespoke construction. Qualified design service available. **Contact 01925 764 397 or 07888 730 383** (03/13)

SIMPLY GARDENS CONSULTANCY offers maintenance and design advice; maintenance schedules; planting plans; expert plant selection; on-site training. Regular or occasional maintenance can be arranged. **Call Graham on 01925 766873, mob 07765 611016 or email gard.cott@btinternet.com** (13/13)

GATES

Village Gates
Manufacturers and installers of quality timber gates
villagegates.co.uk
For free quotes and advice call
01925 766629
Office Workshops and Storage at
10 Charmuck Road, Colcham WA3 5SH (06/12)

HANDYMAN

Handyman Services
Home, Office & Garden
Internal and External Painting • UPVC Window and Door Repair and Replacement
Mechanism/Lock Changes • Soffits and Fascias
Gutter Cleaning, Repair and Replacement
Flagging • Fencing • Patios • Jet Washing
All Garden Work • All DIY
ALSO Start and End of Tenancy
Cleaning Service NOW available
Call today for a FREE quote
Tel Neil: 01925 757905 (Lymm Based)
Mob: 07813 201850
handymanserviceslymm@hotmail.co.uk (05/13)

HAIR & BEAUTY

MOBILE BEAUTY THERAPIST PHOEBE ELIZABETH. Facials, Manicures, Pedicures, Aromatherapy Massages, Waxing, Pamper Parties, all in the comfort of your home **Tel 07932 990 031, visit www.PhoebElizabeth.co.uk** (08/1/13)
PROFESSIONAL MOBILE hairstylist, creative cutting, colour/colour correction, including foiled highlights. **Tel: Lorraine 01925 755441 / Mob 0786 7910805.** (03/13)

HOME SERVICES

ATLAS ENVIRONMENTAL SOLUTIONS
PEST CONTROL CHIMNEY SWEEPING
Our prices are fixed. Only safe, legal & trusted products used. Guaranteed results, fully insured.
Your friendly, local independent.
07999 487 925 / 01925 445 222
www.atlas4u.co.uk (08/13)

HYPNOTHERAPY

MICHAEL MAHONEY clinical hypnotherapist for IBS, Stress, Anxiety and many other problems. Medical Research project experience, BUPA Service Provider. **For FREE information sheet please email TimelineServices@aol.com or ring 01925-658322 www.healthyaudio.com** (06/1)

KITCHENS

LYMM KITCHEN & BATHROOM PROFESSIONAL INSTALLATION. Ceramic wall & floor tiling. **For free estimates and advice contact Rob Evans on 01925 753752 business or 07763 770408 mobile.** Est 2002. Local references provided (13/13)

LIMO HIRE

WHAT EVER YOUR OCCASION IS WE HAVE limos available from 8 to 16 seats in various colours. If you at the planning stages for a Wedding, Hen party, Birthday or School Prom remember to include a limo for your special occasion. **Visit www.limosnorthwest.co.uk or Call 0800 505 3214** (05/13)

OPTICIANS

ADCOTT OPTICIANS. State of the Art opticians in the heart of Lymm Village. Comprehensive sight tests and a wide choice of spectacles tailored to you, whatever your budget. **01925 757075** (110/13)

PAINTING & DECORATING

ANTHONY MASON PAINTER AND DECORATOR Over 25 years experience. Neat, clean, reliable service. All aspects including papering, paint finishes, colour advice, signs and furniture painting. **Tel. Tony Mason: 07962532811.** (012/12)

BENJAMINS PAINTERS AND DECORATORS. 20 years professional experience in commercial and domestic decorating, wallpapering, coving, interior and exterior work. **Telephone 07837 452514 or 01925 755198.** (11/13)

PAYROLL

WHY TRY TO BE A PAYE EXPERT? Watkinson Black can provide a cost effective payroll service, releasing you to concentrate on your business. **For further details please phone: 01925 413210 or e-mail: info@warringtonaccountants.co.uk** (06/1)

PEST CONTROL

PESTAWAY SOLUTIONS. All pest problems dealt with. Local lad. Competitive prices. All work guaranteed, 25 years experience. **Call now on 07823 338682 or 01925 755702** (09/13)

PLASTERING

LYMM PLASTERING & TILING
Time served Tradesman
Clean and reliable
Fully insured
All areas covered
No job too small
Brian Gaffney
Tel: 07967 087034
(anytime) (11/13)

PLUMBING

CL PLUMBING AND GAS SERVICES LOCAL honest plumber covering all aspects of plumbing and gas works. Boilers and central heating installed and repaired. Bathroom suites supplied and fitted. Cookers and fires fitted. Landlord gas safety checks. All plumbing emergencies - 24 hour call out. No job too small, OAP Discount rates. **Tel Craig 01925 819692 07851 405466 www.warringtonplumbingservices.co.uk** (083/13)

GAS SAFE REGISTERED ENGINEER. Andy Gas of Lymm, specialist in: Boiler upgrades, servicing, repairs to all domestic heating and gas appliances. Professional service. **Tel Andy on: 07753 838129 or 01925 753712.** (13/13)

PRINTER CONSUMABLES

WHEN IT RUNS OUT
POP IN AND SEE HOW MUCH MONEY YOU COULD SAVE TODAY!
5 London Road, Stockton Heath, Warrington, WA4 6GG
01925 600633 Cartridge World
www.cartridgeworld.co.uk (13/13)

RE-UPHOLSTERY

TRADITIONAL and modern re-upholstery. Dining chairs, headboards, 3-piece suites etc. Customer's own fabric welcome. **Tel: Orchard Soft Furnishings 756388.** (12/13)

SITUATIONS VACANT

SALES PERSON
Lymm Life and its sister publications are looking for a self motivated person with good people skills who can work on their own and as part of a team.
The successful applicant would be able to work from home but would also be expected to spend a certain amount of time in the office
Hours are by agreement. The package offers expenses and uncapped commission
If you feel you have the necessary qualities please email your CV to info@warrington-worldwide.co.uk
TAXI / PRIVATE HIRE SERVICE
Frazer's of Lymm
Private Hire Service • Good local rates
Reliable friendly service • up to five seater
Airport • Station Schools • Business or pleasure for OAPs
Contact Nigel on 01925 754426 or Mob 07812 674822 (12/13)

TILING

ADCOTT OPTICIANS. State of the Art opticians in the heart of Lymm Village. Comprehensive sight tests and a wide choice of spectacles tailored to you, whatever your budget. **01925 757075** (110/13)

TUITION

CHESHIRE TUTORIALS offers tuition. Primary to 'A' level. Tutors especially primary maths, science and English welcome. **Tel: 01925 758296.** (03/13)

DYSLEXIA SPECIALIST TEACHER. Calm, friendly, patient approach with a qualified, experienced teacher. Approved Teacher Status from the British Dyslexia Association. Free initial consultation and recommendations. **Contact: Glynis Allen. AMBDA. Cert. Ed. Post-Graduate Diploma SpLD (Dyslexia). Tel: 01925 756141 or 07808 934222** (08/13)

Just English
GCSE examinations in January?
Book a seminar and gain confidence now!
For more details, and immediate improvement, call Wendy on **07863 888 599**
www.justenglishlymm.co.uk (03/13)

SPANISH TUITION - FOR SPANISH GCSE students and beginners wanting to practise conversation. Have an A-level (grade A) in Spanish, am a fluent speaker, with Spanish background. **Contact Francesca Tel: 01925756867 or 07901536440** (08/12/12)

TV - SATELLITE

AERIALS 2000 of Lymm. No job too small. All work guaranteed. Aerials and satellites supplied and fitted. Sky subscriptions available. OAP reductions. Sky Digital / On Digital. 7 days a week. **Tel: 01925 753427. Mobile: 07712 632315.** (12/12)

WINDOWS & GLAZING

NEIL COPELAND WINDOWS & Conservatories Ltd. Specialist in uPVC double glazing windows, doors, porches, conservatories, also fascias and guttering. FENSA registered. All work guaranteed. **Tel: 01925 756138 / 07961 361550.** (12/13)

SP GLAZING for all your glazing requirements, double glazed units including failed and misted units, broken windows, mirror fixing. Kite marked to B/S. Time served glazier with over 30 years experience. **For a friendly no obligation quote tel Sam Pendlebury on 01942 671859. Mob 07919 660296.** (04/13)

MOTORING SERVICES

PARKVIEW CAR SALES
We buy and sell QUALITY CARS Best price paid
Telephone Peter on 01925 575737 / 07957 545479
23 Podgate Lane
Podgate, Warrington
Cheshire, WA1 3RS (06/1)

Banner & Co

Independent Residential Sales and Letting Agent



Dreaming of a New Home

Invite us to value your home and instruct us in January and we will **reduce our fees by 10%**



Merry Christmas
from all the team at Banner & Co
Sales • Lettings • Mortgages

01925 753636 www.bannerandco.com

Please note that if you have already instructed another agent, we would advise you to check any agreement you may have to ensure you are not liable for more than one commission by instructing us as your agent