

**Lymm**

# Life

**FREE EVERY MONTH**

December 2011

Issue: 153



Take a look!

## Santa arrives in style!

Centre pages



**Dickensian  
Festival programme**

Centre pull-out



**LYMM  
PARISH  
COUNCIL**

Approved by Lymm Parish  
Council as the official  
magazine for Lymm

**Banner & Co**

Independent Residential Sales  
and Letting Agent

See our main advert  
on the back page  
for details

**01925 753636**

### SPECIAL OFFER

Free Initial Consultation  
and Tooth Whitening with



[www.gavinismydentist.com](http://www.gavinismydentist.com)

Gavin Ladbroke | Dental Solutions

**T:01925 75 65 65**

### Classic Home Improvements

Wood Burning Stoves  
Fireplaces • Kitchens  
Bathrooms • Bedrooms  
Granite Worktops

Tel:

**01925 445455**

61-67 Kautsford Rd, Warrington

### need family law advice?

call your local  
legal experts

free legal clinic  
monday 5pm-7pm

**forshawes  
dwyers  
philipson**

**01925 604713**  
[www.fdrlaw.co.uk](http://www.fdrlaw.co.uk)

**Regular news updates at [www.lymmmlife.co.uk](http://www.lymmmlife.co.uk)**

**Editor**

Gary Skentelbery

**Production**

Paul Walker

**Business Manager**

Tony Record

**Advertising**Freephone  
0800 955 5247**Editorial**

01925 623630

**Email**

info@lymmmlife.co.uk

**Websites**

www.culchethlife.com  
 www.frodshamlife.co.uk  
 www.lymmmlife.co.uk  
 www.warrington.tv  
 www.warrington-worldwide.co.uk

**Address**

New Media Centre  
 Old Road Warrington  
 WA4 1AT

Lymm Life is published monthly  
 by Orbit News Ltd.

The contents of this magazine  
 are fully protected by copyright  
 and nothing may be reprinted  
 or reproduced without prior  
 permission of the publishers.

The publishers are not liable for  
 any statement made or opinion  
 expressed by third parties in this  
 publication.

Printed by TwentyFourSeven

# Editor's Comment



**THE festive season is almost upon us and many traders and community groups will be hoping to see plenty of local residents shopping in the village and supporting the annual Dickensian Festival.**

A lot of hard work has gone into promoting the village this year and it is hoped late night and Sunday opening will provide a much needed boost in the run up to Christmas.

Special distinctive red posters are being displayed around the village by the local businesses who have supported the Dickensian event and as always I would urge everyone to support those who support the village.

Lymm really does have a thriving village centre and unlike many high

streets around the area, is not full of vacant premises - which is indeed a very positive sign.

The limited free parking facility on Pepper Street has made it easier to park - but that is becoming over populated now - so the sooner a similar scheme can be implemented on the Davies Way car park - the better.

Meanwhile I have had reports of litter problems around the village centre, so with this in mind I would also urge everyone to be careful with

their waste paper, by either taking your litter home to your recycling bins or using the bins around the village.

Traders can also help by ensuring the pavement outside their premises is kept in a clean and tidy manner as I am led to believe council street cleaners are a rare site in the village centre, especially at weekends.

Finally I would like to take this opportunity of wishing all our readers and advertisers a happy Christmas and a healthy and prosperous New Year.

Thank you for your on going support.

**Have you got a story? Send your news items and pictures to  
 info@lymmmlife.co.uk or phone 01925 623630**

## R + N STANHOPE

### Coal and Log Supplies

Best Quality Coal  
 Smokeless Fuel  
 Logs Supplied in Bags and Bulk  
 Peat Bricks

**Open 7 Days**

Broomedge Farm  
 Burford Lane, Lymm WA13 0SE

**Tel/Fax: 752830**

**Reflexology - Acupuncture - Herbal Medicine**  
**Bowen Technique - Hypnotherapy**  
**Physiotherapy - Osteopathy - Homeopathy**  
**Colonic Hydrotherapy - Counselling**  
**Private GP - Stop Smoking - Weight Loss**  
**Chiropody - MLD - Massage**

**Gift Vouchers available, ideal for a Christmas Gift!**

Please call to find out more  
**Tel: 01925 730123**

www.cheshirenaturalhealth.co.uk  
 Cheshire Natural Health, Beehive House, Tarporley Road, Sretton, Warrington

## Dentalcare with Jill Cooper BDS DPDS



...something to smile about

### Facial Aesthetic Treatments

by our highly trained professionals

**Free initial consultation with  
 very competitive fees**

Anti-wrinkle Injections £180 - £249

Dermal Fillers from £199

New dental patients being accepted

**Call now while spaces are available**

**Adult check-up only £17**

**Children's check-up is FREE**

Tel: 01925 758616

152 Rushgreen Road, Lymm, Cheshire WA13 9QW

www.dentalcarewithjillcooper.com



# Affordable homes get the go-ahead

**ANGRY residents have lost a battle to block plans for 10 three-storey "affordable" homes on open land adjoining the Farmer's Arms pub at Lymm.**

Warrington borough council's planning committee has approved the application despite opposition from more than 40 residents who packed into the council chamber.

Local councillors were divided on the issue. Cllr Ian Marks and Cllr Peter Powell backed the objectors but Cllr Sheila Woodyatt and Cllr Bob Barr supported developers Great Places Housing Group.

Officers recommended the scheme be approved - and councillors were warned that if they refused permission there would be an appeal which would be likely to be successful and result in costs being awarded against the council.

Cllr Marks said he supported the principle of quality, affordable housing but would prefer to see the site retained as open land.

Eight years ago, two separate plans to build houses or apartments on the site were refused on the grounds the development would have a damaging effect on the open character of the area and harmful impact on trees on the site.

Soon after, a 6ft high fence was around the land, despite neighbours protests that it was an eyesore.

Planning officers said it would be difficult to justify refusing consent on the grounds of loss of open space because the site was fenced off and no longer making a positive contribution to the area.

In fact, the fence itself detracted from

the visual amenities of the area.

Residents claimed erecting the fence was a cynical and insulting act and that the land should be retained as a green, community space.

Cllr Woodyatt said the original plan for 17 dwellings would have been over-development of the site. She understood the concerns of the residents but the land was privately owned and there was nothing the council could do. If the plan was refused it would be replaced by a less desirable one.

She believed the development would be a good one - the first genuine proposal for affordable homes in Lymm.

Cllr Barr said the only way the site could be preserved as open land would be for someone to win the lottery and buy it. The cost would be "millions".

The committee voted to approve the scheme.

FOR



Cllr Woodyatt



Cllr Barr

AGAINST



Cllr Marks



Cllr Powell

**For ALL your plumbing requirements**

**ROBERT KETTLE  
PLUMBING & HEATING  
SERVICES**

For a fast, local service  
No job too small • Competitive rates  
Free estimates • Senior citizens discounts

**Home: 01925 756685  
Mobile: 07789514087**

*Sophies  
Soft Furnishings*

Curtains • Roman Blinds  
Cushions • Tiebacks • Poles  
Tracks • Valances • Pelmetts

We design, make and fit to meet your exact requirements.

For free home visit or advice ring  
**Anne on 01925 754446**

www.sophiessoftfurnishings.co.uk

**Whites Sports  
Warrington Market**

1901 - 2001 - 100 YEARS OF EXCELLENCE

*Specialists in:*

Darts, Bowls, Snooker, Air Guns,  
Walking Sticks, Warrington Town  
Merchandise, Rugby, Cricket, Football

**GIFT VOUCHERS AVAILABLE**

Telephone/Fax:  
**01925 631531**

Kids Planet - Beasmont  
O'Leary Street  
Warrington  
Cheshire  
WA2 7RQ  
01925 630 879  
Open 07:30 - 18:00

Kids Planet - Warrington  
Ebenezer Chapel  
Ley Street, Warrington  
Cheshire WA1 1UL  
01925 417 350  
Open 07:00 - 19:00

**Kids Planet**

... A WORLD OF DIFFERENCE

We offer the world as seen through the eyes of a child. We give the highest standard of day care and education creating a unique home from home for our children.

- Flexible opening times
- Experienced and enthusiastic staff
- Ultra secure environment with CCTV
- Healthy nutritious menu
- Indoor and Outdoor play areas
- Excellent Ofsted Reports

Kids Planet - Lymm  
29 Eagle Brow  
Lymm  
Cheshire  
WA13 0NA  
01925 759 220  
Open 07:00 - 19:00

Kids Planet - Widnes  
Kingsway Learning Centre  
Victoria Road  
Widnes  
Cheshire WA8 7QY  
0151 257 7079  
Open 07:30 - 18:00

www.kidsplanetdaynurseries.co.uk

**The UK's No.1  
Lawn Care Company**

- Scarification
- Aeration
- Lawn Fertilising
- Weed Control
- Moss Control
- Water Conserver
- Pest and Disease Management

from as little as **£15**

**Call in the professionals!**

GreenThumb's annual treatments ensure your lawn looks lush, green and healthy. With prices starting from £15 per treatment, your lawn nightmare will soon be history.

Call your local branch today for a FREE lawn analysis and no obligation quote on:

**01925 210669** **GreenThumb**

Find us online at: **www.greenthumb.co.uk**



**December 12**  
**LYMM & DISTRICT HISTORY SOCIETY**  
 'The Stanleys of Alderley' - Clare Pye.  
 Lymm Village Hall, 8pm.  
 Visitors always welcome  
 More info Lynne Smith 01925 756776

**December 13**  
**LYMM PARISH COUNCIL**  
 Lymm Parish Hall 7.30pm

**LYMM LIONS GROUP**  
 Meet: Bridgewater Club, Lymm  
 1st and 3rd Tuesdays of the month. 8pm  
 Contact: 0845 833 5729

**LYMM THURSDAY EVENING BRIDGE CLUB**  
 Lymm Village Hall every Thursday 7pm

**MAPLE LODGE ART GROUP**  
 Meet each Wednesday 9.30am - 12.30pm  
 Maple Lodge Guide HQ, Pepper St, Lymm  
 Details: 01925 755126

**ROTARY CLUB OF LYMM**  
 Every Wednesday at Statham Lodge Hotel  
 7.15pm for 7.30pm  
 Contact the secretary 01925 650189

**LOVING HANDS**  
 Knitting for charity at Lymm Methodist Church,  
 1st and 4th Thursday each month.  
 1.30pm - 3pm. Details: 01925 823614

**CHRISTMAS MARKET**  
 at Lymm High School  
 Sunday 20th November  
 12noon - 4.30pm  
 Over 25 Quality Stalls  
 Fun & Games for all the family  
 Lunch & Afternoon Tea  
 Entry £1 Adults | Child/Students Free  
 Enquiries 01925 755389

**MARKET LUNCHESES**  
 Eagle Brow Methodist Church  
 3rd Thursday in the month  
 Light lunches 12 noon till 2pm. All proceeds to  
 Age UK and YMCA Room at The Inn

**LYMM SCOTTISH COUNTRY DANCE CLUB**  
 St Mary's Church Hall  
 Second and fourth Fridays (Sept - May)  
 7.30pm. Details: 753853

**LYMM BAPTIST CHURCH FOYER LUNCHESES**  
 Higher Lane. Mondays (during term time).  
 12 noon to 1.15pm. £2.50

**LYMM JUBILEE GARDENING CLUB**  
 Meet Third Wednesday of the month  
 Lymm Baptist Church, Higher Lane. 7.30pm  
 Visitors welcome. £2 includes tea and cake

**LYMM FLORAL ART GROUP**  
 Lymm Village Hall  
 Third Monday of the month (except August)  
 at 7.30pm

**LYMM ORNITHOLOGY GROUP**  
 Lymm Village Hall, 7.45pm for 8pm,  
 Last Friday in the month (ex June & July).  
 Guest speaker, Slide Show, Refreshments.  
 Visitors welcome. First visit FREE.  
 Also field trips. Details: lymmog.co.uk

**LYMM WINE AND BEER CIRCLE**  
 Every 4th Wednesday, 8pm  
 Lymm Royal British Legion Club.  
 Details: 01925 756085

## Bell restored to former glory

**FORMER** pupils of the old primary school which now is home to the revamped Oughtrington Community Centre heard their old school bell ring for the first time in more than 40 years at a special 'blessing'.

The old bell which once hung at the school has been returned to pride of place and was rung for the first time in 40 years at a special event to thank those who have supported fundraising for the community facility.

Father Michael Burgess from the nearby St Peter's Church was on hand to perform a special blessing ceremony to mark the occasion.

He was joined by Luncheon Club members, local dignitaries and those



who have contributed to the fund-raising work.

The bell was originally taken down by former local councillor Dennis Thomason when the community centre took the building over from Cheshire Council back in the 1970s.

Funding from WREN and Biffaward helped fund a new roof on the building. The idea to do a blessing was to allow some of the luncheon club attendees to hear the bell for the first time since they attended the school.

## Playgroup Christmas fair

LYMM Village Hall Playgroup is to hold its annual Christmas Fair on Saturday November 26 from 2-4pm at the Village Hall, Pepper Street. Children will be able to visit Santa in his grotto and take part in a variety of fun activities.

Stalls will include hook a duck, face painting, a local craft stall and children's club hub.

**CHRISTMAS HOLLY WREATHS**  
 Only £7 inc delivery on 12/13th Dec  
 (High Legh, Lymm, Thelwall and Warburton areas only)  
 To order call 01925 754751/752559/454040  
 scouts@oughtrington.co.uk  
 Merry Christmas and thank you for your support  
**1st Oughtrington Scout Group**

**Abbey Leys Farm Shop**  
*Fresh Farm Food at its Best!*  
 Organic Free Range Eggs • Goose and Duck Eggs • Pickled Eggs  
 Home Grown Potatoes • Fresh Fruit and Vegetables  
 Farmhouse Cheshire Cheese • Butter • Fresh Milk  
 Farmhouse Ice Cream and Lemon Cheese  
 Opening Times: 9.00am - 5.30pm Mon - Sat. Sun 10.00am - 4.00pm  
**ABBEY LEYS FARMERS' MARKET**  
 First Sunday each month 10am - 2pm  
**Tim & Janet Harrison**  
**753465**  
 Peacock Lane, High Legh

**The Rosebank Centre & Rosebank Naturegarten**  
 For babies, 3-5 year olds and after-school children  
**The Natural Choice for your child - Pepper St, Lymm**  
 • Excellent facilities and extensive grounds  
 • Forest day options  
 • Outstanding Parent Partnership  
 Make sure your child has a head start and a childhood to sing about. Come and have a look yourself, just call :-  
 Julie 01925 756900 or Sadie 01925 758959

To appear on the What's On page please contact Lymm Life on 01925 623630

**B.A.S.**  
 Bespoke Architectural Structures Ltd  
 Transform your living space or work place with specialist glazing made to the highest standard. Family based business manufacturing, supplying and installing glazing systems to the domestic and commercial market specialising in sliding folding doors. Call us now for a **FREE** no obligation quotation.  
 Best quality and service assured!  
 www.b-a-s.co.uk  
 Tel: 01928 579957  
 Unit 3, Sycamore Court, Manor Park, Runcorn. WA7 1RS

**The Complete Kitchen & Bathroom Service**  
**Village Designs**  
 We design and install all types of kitchens and bathrooms. Our comprehensive service includes all trades:  
 Lighting • Tiling • Flooring • Decorating etc  
**One local company from start to finish**  
 Visit: [www.villagedesigns.co.uk](http://www.villagedesigns.co.uk) or  
 Ring Jeremy on 07810 421243

# End of the road for The Railway?

**A MAJOR fire which kept firefighters occupied throughout the night may have finally ended any hopes that Lymm's Railway pub might one day re-open.**

Nine fire engines from Stockton Heath, Warrington, Irlam, Altrincham, Northwich, and Congleton, with relief crews from Runcorn, Ellesmere Port and Chester were involved in a battle to try and save the old pub, in Mill Lane.

Water was pumped from a nearby pond and Mill Lane was closed to traffic.

The blaze involved the whole of the first and second floors and the roof.

Fire investigation officers and the police are looking into the cause.

The Railway has been closed for several years - much to the regret of locals who appreciated the real ales for which it was once famous.

It was also a popular centre for folk music.



**May Queen festival has money to give away!**

LYMM May Queen Festival still has some money left over from this year's event and is ready to donate it to worthy causes.

Charities, community groups and others interested in applying for a share of the money can do so until the end of November.

Festival spokeswoman Lynn Shaw said: "We have already given away some of the money we made on this year's festival. But we have some left and would like to hear from organisations who would like some."

"If they would like to write and tell us what sort of an organisation they are and what they would like the money for, we will consider their application."

Applications can be sent by email to [mrandschrimas@btinternet.com](mailto:mrandschrimas@btinternet.com) or in writing to Lynn at 85, Whitbarrow Road, Lymm, WA13 9AY. Lynn can also be contacted by phone on 01925 755827.

  
**P.E.T.S. ANIMAL SPA**  
**Pet Grooming Specialists**  
**20 years experience**  
Grooming from £10  
Treatments from £5  
we use products with natural ingredients  
Blueberry Facial for Face Skins  
Avocado Paw Treatment for Cracked Pads  
**07792 736 545 or 01925 750418**  
[www.petanimalhotel.co.uk](http://www.petanimalhotel.co.uk)

**Classic Home Improvements**  
*Established 1987*  
**Fireplaces - Kitchens - Bathrooms - Stoves - Granite Worktops**  
**All work project managed & installed**

  
**Huge Savings on Fitted Kitchen & Bathrooms ordered During September**

  
**Huge selection of WOODBURNING STOVES On Display**

  
**The Latest High Efficiency Gas Fires NOW in stock**

  
**Classic Home Improvements**  
61-67 Knutsford Rd,  
Warrington  
Cheshire,  
WA4 1AB  
Tel : 01925 445455  
[www.classichomeimprovements.co.uk](http://www.classichomeimprovements.co.uk)

  
**NEW or REPLACEMENT GRANITE WORKTOPS SUPPLIED & INSTALLED**

# Henry scoops Good Citizen award

**A LYMM High School pupil has been awarded a Good Citizen Award by Cheshire Police.**

The Cheshire Young Persons Good Citizen Award Trophy for outstanding contribution was presented to Henry Garside from Lymm High School as

the young person who has been judged by the panel to have made the most outstanding contribution to his community.



Henry was presented with his award during a special presentation at Ellesmere Port Civic Centre.

The Constabulary is funding the Young Persons Good Citizen Awards in partnership with Cheshire Crimebeat, The Brian Kennedy Trust and the Co-operative Group.

The project has been introduced this year by Cheshire Constabulary and its partners and will be awarded annually to young people aged 8-16 years.

The aim is to reward young people who have made a positive contribution to their community over a sustained period of time.

The types of activities that the young people are assessed on include responsible behaviour or demonstrating peer leadership, supporting members of the community

and supporting community activities.

The awards were presented by Assistant Chief Constable Janette McCormick, who said: "The intention of this award is to focus not on one particular piece of work or project but to reward the effort and energy demonstrated by young people throughout their local community on a daily basis."

"We want to reward those young people who lead by example, demonstrate they have pride in their community and show their pride in their actions each day."

"This project aspires to work to close the intergenerational gap that exists within our communities and demonstrate to the older generations that the young are here to support their communities with new ideas, enthusiasm and effort."

## Fishing for funds

LYMM Angling Club are looking for applications from 13 - 25 year olds for Angling related projects within their community.

This could be anything from organising a Fishing Open Day on a local pond/lake to setting up a Micro Club or setting up a Match Team for children of the same age.

The money will be awarded by O2 as long as the project meets their criteria. However as a Youth Partner to O2's Think Big project, Lymm AC have a number of guaranteed projects.

Preference will be given to North-West based projects and help and advice is given by qualified angling coaches.

An initial award of £300 is awarded and selected projects can then apply for £2500 in O2's Think Bigger project.

For more information or an application form please email christopher.finneran@gmail.com

**We Clean Ovens ...so you don't have to!**

Call us today to leave your cooking appliances sparkling, using our eco friendly products.

**oven**  
oven valeting service  
Local | National | Affordable

Our oven cleaning experts will leave you free to enjoy your valuable leisure time.

Call for LOCAL service

**01925 453377** [oven.co.uk](http://oven.co.uk)

**BYTEWYSE COMPUTERS LTD**  
THE SMARTEST CHOICE FOR SYSTEMS & SUPPORT

- Custom built PCs to meet all requirements
- Full Windows 7 supply and support
- Free home delivery and installation with up to 24 months warranty
- PC repairs and maintenance
- Networking and PC support contracts for small or home businesses
- Remote Access Support
- Call us now on 01925 711338

[www.bytewysecomputers.com](http://www.bytewysecomputers.com)

**WE HAVE MOVED**  
8 Webster Court, Westbrook Crescent, Gerrards Business Park, Warrington, WARS 8WD

**orbis<sup>3</sup> Building Contractors**

Call now for a free survey

■ New Builds ■ Extensions ■ Kitchens & Bathrooms ■ Roofing

All of our project trades people are fully qualified and comprehensively insured for all works carried out and are fully conversant with Health and Safety regulations

Projects are fully managed and whatever your needs, our highly trained professionals will ensure that all work is carried out efficiently and stress free

We work exclusively in the North West

We also specialise in Building Insurance Claims

Tel: 07412 077107 | Tanyard Farm, 80 Rushgreen Road, Lymm  
[www.buildinginsurancerepairs.co.uk](http://www.buildinginsurancerepairs.co.uk) | [john@buildinginsurancerepairs.co.uk](mailto:john@buildinginsurancerepairs.co.uk)

**Bramble Lodge Day Nursery**  
Birth - 5 years

Good quality childcare and education in a homely environment.

Next to Lymm High School

[www.bramblelodge.co.uk](http://www.bramblelodge.co.uk)

**01925 757597**  
36 Oughtrington Lane • Lymm

**Thelwall Upholstery**

**FOR THE MOST COMPETITIVE RATES IN THE AREA**  
49 Knutsford Road, Grappenhall WA4 2NR  
Call Sean on: 01925 604770 or mobile: 07799 228080

*For all your upholstery needs*

**SPECIALISTS IN:**

- Re-filling Cushions • Re-springing • Full Re-upholster
- Dining Furniture • Headboards

A wide range of sample books to choose from  
All at competitive rates

**PHONE FOR YOUR FREE ESTIMATES**

FSB

With an increase in sales, we currently have clients waiting to purchase. Ridgeway Residential is the right choice to sell your property quickly and efficiently.

**Urgently Required Properties For Sale. Please call for a Free Market Appraisal Today**

## FOR SALE



### Mersey View Farm, Rixton

A spacious, fully modernised, farmhouse in a semi rural location. Briefly comprises of lounge, dining room, playroom, conservatory and fully fitted kitchen, five bedrooms and family bathroom, front & rear gardens, single garage and driveway. Double-glazing and is warmed by both gas central heating and electric under floor heating.

**£399,995**



### 9 Albany Road, Lymm

A well presented extended semi detached in quiet cul-de-sac location, entrance hall, lounge, L shaped living/family room, breakfast kitchen, utility room, downstairs w/c, 4 bedrooms, 2 bathrooms (master having a en-suite), GC Heating, off road parking, large rear garden, garage. Viewing Recommended.

**£235,000**



### 22 Dinglebank Close, Lymm

A spacious second floor apartment which has been recently refurbished and is within walking distance of Lymm village centre. Comprises of entrance hall, Spacious lounge, two double bedrooms, kitchen, bathroom with shower, gas central heating, off road parking and communal gardens.

**£169,995**



### 5 Wellcroft Gardens, Lymm

A well presented first floor apartment in quiet location comprising of an entrance hall, lounge, fitted kitchen, double bedroom, bathroom, UPVC double glazed, central heating, allocated parking. 50% Shared ownership.

**£58,500**



### 29 Bollin Close, Lymm

A spacious extended semi-detached property in a popular residential area, on the edge of Lymm village. The property comprises of an entrance hall, lounge, dining room, study, good sized breakfast kitchen, 3 bedrooms, bathroom with shower above bath, gardens to front, side and rear. Single garage and off road parking.

**£249,950**



### 15 The Farthings, Lymm

A modern mews property briefly comprises, entrance hall, large living/dining room with bay window and a door opening into rear garden, fitted kitchen, downstairs W/C, two good sized bedrooms and family bathroom. Off road parking for two cars and well presented garden to the rear. Viewing Recommended.

**£187,500**



### 29 Walnut Close, Woolston

Three bedroom link detached property. The ground floor briefly comprises; spacious entrance hallway with stair access, lounge dining room, fitted kitchen and conservatory to the rear elevation. First floor there are three bedrooms, and a family bathroom. Front and rear gardens with an integral garage and driveway for off road parking.

**£162,950**



### Melbourne Cottage Guest House, Bowness, Lake District

A beautiful guest house situated in Bowness, a substantial stone built property developed from two cottages. Very well maintained and improved. There are 8 letting bedrooms, 7 en-suites and 1 with private facilities, a guest lounge/reception, dining room and kitchen. There is also owners accommodation.

**£625,000**

**TO LET**

### 28 Eagle Brow, Lymm

5 Bedroom 2 Bathroom semi detached period property. Unfurnished. Available Immediately **£2,250pcm**

### 99 Chaise Meadow, Lymm

4 Bedroom semi detached property, unfurnished. Available immediately **£895pcm**

### 17 Dairy Farm Close, Lymm

3 bedroom link detached, Furnished/Unfurnished, Available 7/11/11 **£795pcm**

### 29 Walnut Close, Woolston

3 Bedroom link detached, Unfurnished, Available 8/11/11 **£695pcm**

### 22 Dinglebank Close, Lymm

A fully refurbished 2 bedroom apartment. Unfurnished, Available Immediately **£595pcm**

### 21 Ridgeway Gardens, Lymm

HOLIDAY LET. 3 bedroom Mews property including all utilities. **£395 per week**

**TO LET**

**Due to the high demand in Rentals we require To Let properties in all prices.**

19 The Cross Lymm Cheshire WA13 0HR T. 01925 756931 E. sales@ridgewayresidential.co.uk



## Brownies celebrate their Diamond Jubilee

**First Lymm Brownies celebrated their 60th Birthday with tea and cakes at their Maple Lodge Guiding Headquarters on Pepper Street.**

Pictured with the cake are Brownies, Guiders and former Brownies and Guiders.

## WI like to be beside the seaside

A SEASIDE theme was enjoyed by members of Heatley WI during their meeting.

Members heard they will enjoy a visit to the restored Art Deco Midland Hotel, in Morecombe, next year. The committee has decided to use the money from a group bursary for the trip.

The seaside was the theme of the competition which was won by Margaret Sharpe and Kath Heywood.

Speaker Rev Paul Martin then surprised members with his collection of "naughty" seaside postcards. He showed members his collection of cards sent by holidaymakers which included the traditional "fat ladies and red-nosed

gents."

Members were interested to note how humour had changed over the years and many giggled at the jokes - which they felt may not be understood by a younger audience.

Mr Martin was thanked by vice president Carol Turner.

A plant had been sent to Christine Syers, who had suffered a fall, and visits had been made to Jean Higgins, who was in Warrington Hospital.

Margaret Sharpe reported on her visit to the County Autumn meeting.

Members have been asked to decorate one of the trees at Chester Cathedral and Anne Oakes appealed for contributions.

## Running for beginners

A NEW beginners' running session has been set up by Lymm Runners.

The 45 minute run/walk session is for people who want to start running or who currently run around 15 minute miles.

It takes place at 6pm on Wednesdays and starts from Lymm Library.

Tash Swann, beginners' group leader said: "Whether you've always wanted to run but never thought you could or just like to take things at a slower pace, we're here to encourage and support you to take those first steps."

The sessions are open to non-members although those who attend regularly will be asked to become a member. For more information contact: [membership@lymmrunners.org.uk](mailto:membership@lymmrunners.org.uk) or visit: <http://lymmrunners.org.uk>



### P.E.T.S. ANIMAL HOTEL

**Setting New Standards in Animal Care  
Luxury Style Boarding**

**Doggy Day Creche**

- Pick up & Delivery Service
- Dog Walking

**Puppy Training Classes**

- Behaviour Management

To arrange a tour please ring  
Fran Jennings on  
**07792 756 545 or 01925 750418**  
27 Burford Lane, Lymm, Cheshire WA13 0SH  
[www.petsanimalhotel.co.uk](http://www.petsanimalhotel.co.uk)

# 50% OFF

All 'Instant' Slimming Packages



- Hair Removal
- Vessel Removal, Rosacea Treatment
- IPL Photo-rejuvenation, Skin Tightening  
Collagen Remodeling
- Sundamage Treatments
- Ultrasonic Deep Skin Cleansing
- DERMOLIFT non-surgical Face Lift
- ENDERMOLOGIE inch loss and  
body reshaping treatment
- Inch Loss Body Wraps
- 'INSTANT' Slimming Packages



Book your **FREE** consultation on  
**0845 833 0667**  
[www.laserina.co.uk](http://www.laserina.co.uk)  
24a Washway Road, Sale M33 7QY



# WIN

## AN AMAZING TWO WEEK FAMILY HOLIDAY TO FLORIDA

with flights and accommodation  
plus Disney World passes!!



**Free £5  
Voucher**  
with every real  
Christmas Tree  
bought & removed for  
recycling at our centre!

We're giving you the chance to win this fantastic prize and all you need to do is purchase your real Christmas tree from our garden centre. With every real Christmas tree bought, you'll get an entry into our prize draw and one lucky family of 4 will soon be heading off on the holiday of a lifetime!!

Full prize details, terms and conditions available in-store or at [www.strikes.co.uk](http://www.strikes.co.uk).  
Real Christmas trees available to purchase from end of November.

## High Legh Garden Centre

High Legh • Knutsford • 01925 756991

# smile this christmas



Merry Christmas from all at



same day smiles

**Unable to eat what you want?**

**Do you lack confidence?**

**Don't want to wear dentures?**

from as little as  
**£199**  
per month\*



## permanent teeth in just one day!



It is now possible using modern implant techniques to achieve natural looking **permanent teeth in just one day**, allowing you to eat what you want, when you want and giving you a beautiful, confident permanent smile.



[www.samedaysmiles.co.uk](http://www.samedaysmiles.co.uk)



same day smiles

Call one of our patient co-ordinators and book your **FREE** consultation on:



**01925 393 740**

## what a difference a day makes™

\*Rates correct at the time of going to press. 7.9% APR fixed for a 5 year term. An application is required and terms and conditions apply. Typical example for one fixed arch is approx. £15,950, requiring a £6049.84 deposit, followed by 60 monthly repayments of £199. Total amount borrowed £9,900.17. Total amount repayable on finance £11,940.07.

\*\* Finance available for up to 5 years, subject to terms and conditions. Full details available on request.



# Talented Sophie has two strings to her bow

**LYMM youngster Sophie Foreman may be an exceptionally gifted pianist - but when it comes to playing in the Hallé Youth Orchestra, she has a second string to her musical talent...as an accomplished violinist.**

A pupil at top performing Withington Girls' School, she is given full rein to pursue her love for music both as an academic subject at GCSE and as part of the range of extra-curricular opportunities on offer.

Sophie, also leader of the Warrington Youth Orchestra, is taught

violin at the leading south Manchester independent school by Rebecca Thompson who plays with the Northern Chamber Orchestra - one of a number of professional musicians teaching instruments at Withington.

Sophie toured Cornwall with the Hallé during the summer and will

travel with the orchestra to Prague later this year. "I am definitely going to do music at A Level but my other options are maths, chemistry and biology; I might want to be a dentist", she said.

An accomplished Grade 8 pianist, having scored an exceptional 140 marks out of 150, she is hoping for a chance to perform in public with the piano soon. "Maybe I can do a composition for piano and play it at a concert arranged by the music group Voice in Lymm," Sophie said.

Withington, ranked seventh in the country for A-level results by the Daily Telegraph and fourth for GCSEs in both the Times and the Daily Telegraph and is the only school in the north of England in either national top 20.

## Outstanding

Such outstanding success enabled Withington to place 92 per cent of its sixth form pupils in Britain's leading universities over the last three years - second best in the entire country according to new research by the Sutton Trust.

The accolade came in the wake of a Financial Times report naming Withington as not only the top performing school in the North but also one of the best value for money schools in the country.

## Culinary victory for Lymm Chef

TEN chefs and their protégés went head to head in a seven hour gastronomical competition that pushed some of the best chefs in the country to the limit.

Michelin starred chef Aiden Byrne, of The Church Green in Lymm and British Grill at the Macdonald Craxton Wood Hotel in Ledsham, mentored his heat winning candidate, Rohan Nevins from the Macdonald Bath Spa Hotel, in the Visionary Dining Chef of the Year 2011 event, which effectively redrew the line in

professional national chef training.

Together the pair delivered an exceptional main course of Hare wrapped in chicory and sage to the table of 150 diners at The Lakes Hotel School in Kendal. Not only did the diners enjoy the full 10 course meal, they also took part in the judging on the night, their choices were collated with 13,000 web votes that were counted throughout the duration of the event.

Aiden and Rohan secured a whopping 75% of the votes, crowning them as Visionary Mentor of the Year and Visionary Chef of the Year 2011.

Monica Galetti, from the BBC show Master Chef the Professionals, was on hand to present the chefs with their trophies. Rohan has also won a once in a lifetime trip to Joel Robuchon in Tokyo.

Aiden said: "This event helps to

raise culinary standards in the UK and encourages new blood to come forward and develop into the food stars of the future. I was confident that our dish would be well received but could never have predicted such a fantastic response from the diners."

When asked about his protégé, Aiden says, "Rohan has been an excellent chef to mentor and the future certainly looks very bright for him."

The event also raised £3,400 for Hospitality Action, the Hospitality Industry Benevolent Organisation.



Rohan Nevins and Aiden Byrne



"Education is not the filling of a pail, but the lighting of a fire"  
William Butler Yeats.

**Withington**  
GIRLS' SCHOOL

**2012 ENTRANCE EXAMINATIONS**

For Year 7 entry: Monday 9th January 2012

For Years 3-6 entry: Saturday 14th January 2012

Means-tested bursaries available from Year 7

[www.withington.manchester.sch.uk](http://www.withington.manchester.sch.uk)  
For further information please call 0161 224 1077  
Wellington Rd, Fallowfield, Manchester M14 6BL

**The top performing independent girls' school in Cheshire\***

**Alderley Edge School for Girls**

- For girls aged 3-18
- Early Years, Junior, Senior and Sixth Form
- Scholarships and bursaries available
- Located in a safe, secure environment

**Key Dates**

**11+ Taster Day**  
Wednesday 7 December 2011

**11+ Entrance Examination**  
Wednesday 11 January 2012  
**Book your place now!**

**Nursery, Reception & Junior School Open Morning**  
Saturday 17 March 2012  
10.00am-12.00 noon

Check out our new website [www.aesg.co.uk](http://www.aesg.co.uk)

For more information:  
01625 583028 | [admissions@aesg.co.uk](mailto:admissions@aesg.co.uk) | [www.aesg.co.uk](http://www.aesg.co.uk) | Wilmslow Road, Alderley Edge, Cheshire, SK9 7QE | Registered charity number 1006726

\*Based on Cheshire East and Cheshire West & Chester League Tables January 2011



## Book Week winners!

**PUPILS from Cherry Tree Primary School went to school dressed as their favourite book character during Book Week.**

Winners of first prize from each class are pictured from left, Ollie McFerran aged 10, James Scott-McGillavary aged 4, Joe Whittingham aged 9, Scott McPhearson aged 6, Mikolaj Underwood aged 7, Elsa Rabbitt aged 9 and Emma Benson aged 6.

## Pupils share their 'harvest'

PUPILS at Ravenbank Primary School, Lymm shared their "harvest" with homeless and needy children.

At the school's harvest assembly, they donated tinned and dry produce to Warrington YMCA, who were special guests at the assembly.

All classes were involved in the traditional thanksgiving event and the children's generosity was overwhelming. Their donated gifts filled two whole cars for the benefit of the homeless and needy of Warrington.

The YMCA thanked Ravenbank for their continued support by presenting them with a certificate of appreciation.

**Technical Property Servicing**  
"I fix your problems"

**Specialist in:**

- Electrical Problems ✕ Plumbing Problems
- Kitchen Problems ✕ Bathroom Problems
- Appliance Problems ✕ Security Problems

**Qualified - Experienced - Insured**  
**Mr Steven Brotherston**  
**Tel: 07818 636 112**

**rated #1**  
**full service digital**  
**design agency in**  
**warrington\***

**CARPE DIEM**  
WEB // DESIGN // VIDEO // + MORE  
+44 (0)1925 299 842 www.carpe-diem.co.uk

**RAR+ TOP 100**  
AGENCY 2010

## LYMM'S BEST KEPT SECRET

- Bespoke Picture Framing
- Original Artworks and Prints
- Stunning Jewellery
- Plus Fantastic Range of Gifts & Greetings Cards

## New Stock Now In



**01925 754700**

**19b The Cross Courtyard, Lymm**  
(Right at The Terrace and right again at the far end)

[www.edgarart.co.uk](http://www.edgarart.co.uk)

**Beechwood Industries Ltd**  
Garden management solutions

**Jobs to be done in Autumn:**

- ✶ Leaf Clearance ✶ Hollow Tining
- ✶ Scarifying

**Our Services include:**

- Garden Maintenance ✶ Lawn Care ✶ Garden Design
- Landscaping ✶ Construction ✶ Paving ✶ Tree Surgery

**Contact your horticultural experts on**  
**07749 253308 or 01925 860544**  
[www.beechwoodindustries.co.uk](http://www.beechwoodindustries.co.uk)

# New director of golf appointed

**HIGH Legh Park Golf Club has announced that locally based Advanced PGA professional Gavin Beddow has been appointed the full time position of Director of Golf.**

The club, which was taken over by local company Vaughan Leisure Ltd in January of this year, has seen a massive investment in the course and facilities recently which has led to great interest from the local golfing community.

The appointment of Gavin is arguably the most significant of several major appointments at the Club.

In July, the Club announced the appointment of Steve Worthington as new Course manager. Steve, previously from Mollram Hall Golf Club has, in a short period of time transformed the course from 'average' to 'outstanding' in many peoples eyes.

In August the club appointed James Oddy as Hospitality manager. James previously worked for the prestigious

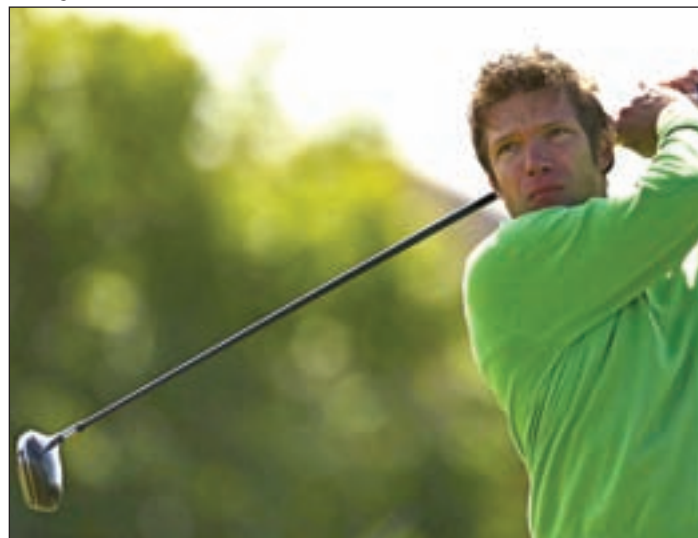
Alderley Edge Hotel and will ensure that the clubs bar, restaurant and function suite, which are due to reopen after a major refurbishment on November 26, are amongst the best in the area. James will be working along side the clubs consultant celebrity chef John Benson Smith, former Northern Chef of the Year.

Gavin who is one of only 50 PGA professionals in the UK to hold the prestigious Advanced PGA Diploma is a regular tutor and examiner at the PGAs national centre at The Belfry.

Commenting on his new role Gavin said: "I am delighted to join the team at High Legh Park. My role is to develop and significantly enhance all golf related activities at the club to achieve the highest possible quality golfing experience for members and visitors."

Managing Director of Vaughan Leisure Ltd, Altrincham born Andrew Vaughan added: "With Gavin at the helm we will be able to drive forward with our aim to make High Legh Park the top golfing venue in Cheshire and amongst the best in the UK"

Gavin will be taking a short break from his new role in early December, in order to fly to Las Vegas as he has won through to the Grand Final of the Virgin Atlantic National Pro-Am Championship, Europes' biggest Pro Am event on December 5-6.



Director of Golf Gavin Beddow

**Vanity Flair**  
MOBILE

*Get into the festive spirit*

Massage • Facials • Waxing  
Manicures • Pedicures  
Eye Treatments • False Lashes  
Spray Tanning • Tooth Gems  
Pamper Parties • Gift Vouchers

**10% OFF**  
for all new clients

Call or Text Jen on 07826 422077

## REAL EARTH

NEW WEBSITE LAUNCHED  
[WWW.REALEARTHUK.COM](http://WWW.REALEARTHUK.COM)



LIMESTONE • MARBLE • TRAVERTINE  
PORCELAIN • CERAMICS • GLASS • MOSAICS  
ADHESIVES • GROUT • WOOD FLOORING • STONE PAVING  
UNDERFLOOR HEATING • BATHROOM SUITES

Lymm Nursery • Rushgreen Road • Lymm • Cheshire • WA13 9PR  
T: 01925 759 607 • E: [info@realearthuk.com](mailto:info@realearthuk.com)

## School links up with South Africa

A South African delegation of head teachers visited Statham Community Primary School as part of a School Link program.

Pictured in one of the classrooms background from left, Graham Butler global education consultant working with schools, Statham Primary head teacher Sue Hall, Wandu Makhubu, Lucas Makana and Faruk Hassan.





[www.highleghpark.com](http://www.highleghpark.com)



Come and visit our newly refurbished Fairways bar and restaurant on the 10th December.

Complimentary video stroke analysis from our PGA professional team including new Director of Golf Gavin Beddow, advanced professional and teacher to the pros at the Belfry.

Refreshments provided by our consultant chef and former Northern Chef of the Year John Benson-Smith.

Learn how High Legh Park is developing into one of the Cheshires top golfing venues.

View our function suite, a premier destination for large functions such as weddings down to small intimate parties.

[www.fairwaysstudio.com](http://www.fairwaysstudio.com)



Come and visit our brand new ladies only fitness studio on Saturday 10th December.  
Open day offer...

Free 'in body' analysis

Complimentary one week trial

**...and discover how you can:**

Improve posture and weight management

Gain a firmer and flatter tummy

Slimmer waist and hips

Toned and strengthened legs

**View our video presentation on**  
[www.fairwaysstudio.com](http://www.fairwaysstudio.com)

High Legh Park Golf Club

Fairways Ladies Studio

Fairways Bar and Restaurant

**OPEN DAY, SATURDAY 10TH DECEMBER**  
**10AM - 4PM**

High Legh Park Golf Club, High Legh, Nr Lymm  
Tel. 01565 830888



**LYMM  
PARISH  
COUNCIL**

Lymm Parish Council  
are pleased to support  
Lymm Dickensian  
Festival

Season's  
Greetings  
from  
*Ree Chic*  
Lymm



17 The Cross, Lymm, Cheshire  
Tel: 01925 756683

### WILLIAM H. LILL + Co.

Your local solicitor  
specialising in:-

Conveyancing  
Wills & Probate  
Accident & Personal Injuries  
Divorce & Family Law

A friendly service for  
all your legal needs

Telephone: 753170 / 755668  
9 The Cross, Lymm WA13 0NY

**GASCOIGNE  
HALMAN**

THE AREA'S LEADING INDEPENDENT  
ESTATE AGENCY

Newly Refurbished Shop at  
6 The Cross  
Lymm, WA13 0HP  
**01925 758345**  
lymm@gascoignehalman.co.uk

**ARCHES**

Footwear, Fashion  
& Accessories

Fabulous Selection  
of Winter Boots

Lelli Kelly, Marco Tozzi  
& Posh Wellies

Great Gift Ideas  
Bags, Scarves,  
Moshulu Slippers  
& Yaktrax

\*Get a grip this Winter\*



**01925 751977**  
18 Eagle Brow, Lymm  
www.archesshoesbags.co.uk

**LYMM  
METALS**

Buyers of All Scrap Metals  
Specialists in Computer Scrap

Copper • Brass • Lead • Steel • Gold  
Silver and High Value Metals

**TEL: 01925 756376 MOB: 07831 107525**  
Heathfield, 22 Oughtrington Lane, Lymm WA13 0RD  
Waste Licence No. CMS/134 720

# Late night opening of Lymm Dickensian Festival prepares for Dickens of Lymm



**LYMM Traders have joined forces to help bring a festive boost to the village by organising a host of activities including late night and Sunday opening along with special promotions, street entertainers and even a Santa's grotto.**

Lymm artist Richard Cowley, who implemented the Lymm-London project during the Lymm Festival and Jan Baker from *Lymm Life*, have put together a major marketing campaign to help boost the profile of the community.

A total of 20,000 leaflets are being distributed throughout the area promoting late night shopping every Thursday in December before Christmas until 8pm,

along with Sunday opening from 11am-4pm.

It is hoped to encourage people who live in the area but don't normally shop in the village, due to their working commitments, to shop local and support the community.

**Late night shopping  
until 8pm every  
Thursday in December**

## Santa's Grotto

**FATHER Christmas will arrive in Lymm in style - thanks to a new look Rotary float.**

Having toured the streets of Lymm for more than two decades Santa's old float had seen better days.

Now members of Lymm Rotary Club have given it a brand new look as they prepare to take to the streets of Lymm and surrounding areas for their annual collection which helps raise thousands of pounds for local good causes.

The new look float is more streamlined so it will be easier to access some of the narrow streets which have been missed out during previous years.

Santa will be out and about on the following dates:

### Mon 5

Booths Hill (1) - Assemble: Dingle Bank Close; Lakeside Rd; Baycliffe; Elmtree Rd; Oaklands; Parkwood; Cherry Lane (upper); Lady Acre Cl, Huntsfield Dr; Booths La; Highfield Dr; Hilltop Rd; Highfield Rd (top)

### Tues 6

Booths Hill (2) - Assemble: Co-op Cherry La; Cherry La (lower); Cherry Tree Ave, Old Smithy Lane, Wychwood Av, Heyes Dr, Edgerton Rd, Lyme Gr, Hardy Rd, Highfield Rd (lower), Massey Brook, Massey Ave.

### Wed 7

Booths Hill (3) - Assemble: Camsley Bridge Garage; Booths Hill Rd, Princess Rd, John Rd, David Rd, Thornley Rd, Barsbank, Barsbank Clo, Daisy Bank Rd, Oak Rd, Moston Grove, Ridgeway Gdns, Grove Av, The Anchorage, Eagle Brow, Brookfield Rd, Maltmans Rd.

### Thur 8

Higher Lane (1) - Assemble: Crouchley Lane; Crouchley La, Manor Rd, Higher La, The Crescent, Mayfield Vw, Greenwood Rd, The Hatchings,

Higher La, Grammar School Rd, Scholars Grn, Limefield Ave, Churchwood.

### Fri 9

Higher La (2) - Assemble: Woodlands Av; Woodlands Ave, Woodlands Dr, Longbutt La, The Seasons, Oughtrington Lane, Cotebrook, Foxley Clo, Higher La, Bellsfield Clo

### Sat 10

Dickensian Day

### Sun 11

Sainsbury's Warrington 10am - 4.00pm

### Mon 12

Thelwall (1) - Assemble: All Saints Drive; Woodlands Dr, All Saints Dr, Parry Dr, Moore Ave, Woodlands Dr, Wilson Cl, Stanton Rd, Pickering Cre, Selworthy Dr, Beech Av, Barley Rd, Dunmow Rd

### Tues 13

Thelwall (2) - Assemble: Bradshaw Lane; Bradshaw La, Ollerton Clo, New Road, Mottram Clo, Richmond Av, Ashley Clo, Pelham Rd, Welwyn Clo, Harlow Clo, Walden Clo.

### Thur 15

Thelwall (3) - Assemble: Prestbury Dr; Prestbury Dr, Handforth Cl, Alderley Rd, Moberley Cl, Wilmslow Cre, Gig La

### Fri 16

Statham - Assemble: Lymm Hotel; Statham Av, Statham Clo, Statham Dr, Lymington Av, Star La, Pool La, Brookside Ave, Oldfield Rd, Warrington Rd, Turnbury Cl, Whitesands Rd, Jubilee Gdns, West Heath, Albany Rd, Northway, Sycamore, Albany Dr, Albany Cres.

Souvenir  
Programme

# Dickensian Christmas Festival

**Saturday, 10th December, 2011  
from 11am**

**For more information visit [www.lymmdickensian.org](http://www.lymmdickensian.org)**

Supported by



**ROTARY CLUB  
OF LYMM**



**Lymm  
Parish Council**

**Don't forget!**

*Carols around the Cross*  
**Christmas Eve 7-8pm – All Welcome**

# Village prepares for Dickens of a Christmas

## New Dickensian organiser at the helm



**THIS year's Lymm Dickensian Festival has a new chairman at the helm - local councillor and Town Crier Peter Powell.**

The festival is financially supported by local sponsors and Lymm Parish Council and takes place on Saturday December 10.

There will be various stalls and activities taking place in the village centre throughout the day, with the annual fancy dress parade setting off from the Lymm Hotel at 1.30pm.

Peter said: "Lymm Dickensian has become one of the highlights of the year in the village and attracts thousands of visitors providing a boost for local traders just before Christmas. "It also provides a major boost for local charitable organisations who raise an estimated £20,000 from various stalls and street collections.

"I would like to say a big thank you to last year's organiser Mike Evans and members of the organising committee for all their help and support.

The event was first started about 26 years ago by the late Monica Spence.

Any one who wants more information about the event or to book a stall should contact chairman Peter

Powell on 01925 754793.

The full list of events appears below.



## EVENT TIMINGS

Venue	Entertainment	11.00	11.30	12.00	12.30	1.00	1.30	2.00	2.30	3.00	3.30	4.00	4.30	5.00
Village Centre	Santa's Grotto			→										
Village Centre	Street Entertainment	→								→				
Village Centre	Childrens' Violin Buskers	→												
Village Centre	Lymm High School Band		→											
Village Centre	Bollin & Earl Stamford Morris Dancers		→											
Village Centre	Punch & Judy		→		→					→				
Village Centre	Stilt Walker	→							→					
Village Centre	Children's Rides	→												
Village Centre	Seven Swords Dancers									→				
Village Centre	Highland Pipe Band								→					
Village Centre	The 'Grand Parade'						→							
Methodist Church	Lymm High School Band - Food	→												
U.R. Church	Lymm Concert Band							→				→		
Youth Club	Farmers Market	→											→	
Village Hall	Stalls	→											→	
Council Chambers	Lymm Artists Exhibition	→											→	
Maple Lodge	Guides and Scouts Stalls	→											→	
Cross & Vge Cntre	Stalls	→											→	
The Boat Stage	Rogers Irish Dancers							→						
Lymm Cruising Club	Decorated Flotilla													→



**Are you looking for a  
good time while helping  
others?**

Over the past six years, Lymm Rotary  
Club has donated more than £35,000  
to local charities and also tackled  
worldwide issues including polio

**The Rotary Club of Lymm**

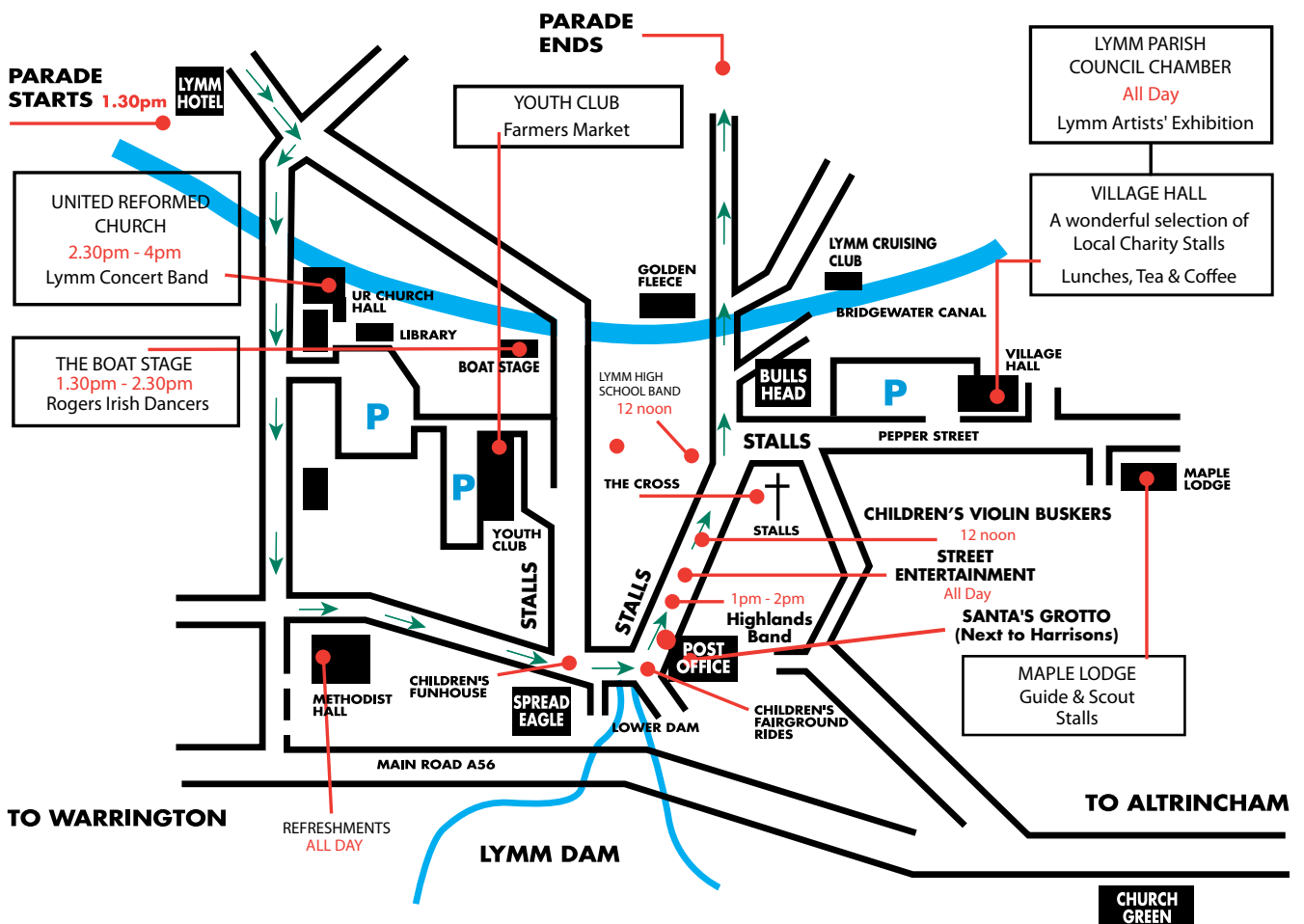
Come and join us and have fun while  
helping your local community

Contact Club Secretary Neville Davies  
for further details on

**01925 755757**

**(Starts 1.30pm, Lymm Hotel)**

Town Crier  
The Boys' Brigade Band  
Horse Drawn Carriage 1  
Horse Drawn Carriage 2  
Bollin Morris Men  
Vintage Car  
Stamford Morris Men  
Vintage Car  
Seven Sword Dancers  
Vintage Car  
Juggling Clowns  
Rogers Irish Dancers  
Warrington Brass Band  
Low Carbon Lymm  
Oughttrington School  
Ravenbank School  
Cherry Tree School  
Statham School  
Little Bollington School  
Youth Club  
Father Christmas Float  
Warrington Pipe Band



A very big 'Thank You' to all the generous sponsors, local societies and friends without whom this day would not be possible

Please support those who support us by looking out for the red posters in shop windows!



ARCHES	BEE CHIC	HOPKINSONS BUTCHERS	CROSS INTERIORS	THE LYMM ARTISTS
LAURA'S CHOICE	HARRISONS STATIONERS	KARL WELSH FLORIST	THE TERRACE HOPKINSONS DELICATESSEN	LAWLERS HAIRDRESSERS
LYMM PARISH COUNCIL	LYMM ROUND TABLE	CHESHIRE SET NAIL BOUTIQUE	THE SWEET SHOP	LYMM LIFE
RUSHGREEN SERVICE STATION	W H LILL SOLICITORS	GASCOIGNE HALMAN	BANNER & CO ESTATE AGENTS	SAINSBURYS
SEXTONS VILLAGE BAKERY	BARCLAYS BANK	RIDGEWAY RESIDENTIAL ESTATE AGENTS	SWEENEY TODDS	LYMM CHIP SHOP
CHESHIRE BUILDING SOCIETY	FLAVOURS & ELMAS RESTAURANTS	CHESHIRE BUILDING SOCIETY	SPREAD EAGLE	ROTARY CLUB OF LYMM
MIKE TANDY JOHN BURROWS	LYMM FESTIVAL COMMITTEE	JOHN EMBLETON	GOLDEN FLEECE	CAFE SALAR
	CLOTHES BOX	BACCI ITALIAN RESTAURANT	LYMM ELECTRIC	THE VENUE

# is Lymm a Christmas



## ta set to arrive in style

**Sat 17**  
The Cross 09.00am – 15.00pm

**Mon 19**  
Oughtrington/Sandy Lane – Assemble:  
Oughtrington Cres, Stage La, The Paddocks, Crown Grn, Whitebroom, Sandy La, Hopefield Rd, Ashcroft Rd, Woodbine Rd, Birchfield Rd, Cedarfield Rd, Sandy La.

**Tues 20**  
Rushgreen (1) – Assemble:  
Farmers Arms, Rushes Mdw, Chaise Mdw, Springfield Ave,

MooreGrv, Reddish La, Springbank Gdns, Rushgreen Rd, Green Vw, Adey Rd, Howard Av, Lodge Cl, Richmond Dr, Church Vw, Whitefield Gr, Warburton Cl, St Peters Clo, Bollin Dr, Bollin Cl, Reddish Cr, Linden Clo

**Wed 21**  
Rushgreen (2) – Assemble:  
Bucklow Gardens, Rushgreen Rd, Bucklow Gardens, The Greenacres, Rush Gds, Fletcher La, Grasmere Rd, Mardale Cr, Thirlmere Dr, Dairy Farm Cl, Stamford Ct.

**Thur 22**  
Village – Assemble: Davies Way Car Park: Danebank Rd, Lymmhay La, Brooklyn Dr, Millbank, The Cross, Pepper St, Grove Rs, Rose Bank, Hartley Close, Crossfield, Racefield Cl, Cyril Bell Cl, Orchard Ave, Fairfield Rd, Rectory La, Rectory Gardens.

**JOHN EMBLETON  
& SON LTD.**

PAINTERS & DECORATORS

Established 1840

**Tel: 01925 753006  
Fax: 01925 756886**

Camsley Grange, Camsley Lane  
Lymm, Cheshire WA13 9BY  
Email: mail.embleton@btinternet.com  
www.johnembleton.co.uk



Trattoria  
**BACI**



**18 The Cross, Lymm.  
Tel: 756067**

Merry Christmas  
&  
Happy New Year  
from all the team at **Lymm**  
*Life*

Check out [lymm.life.co.uk](http://lymm.life.co.uk) for all your latest news!

# Bonfire was a real cracker!

**A HOST of local charities and community groups are set to receive a pre-Christmas boost thanks to the Lymm and District Round Table's 'Big Lymm Bonfire'.**

The event at Lymm Rugby Club raised a record £7,000 - meaning this year more worthy causes will benefit than ever before.

Bonfire organiser and Round Table member Mike O' Crowley said: "We'd like to thank all the members of the public who came to the event - we had a bit of a technical issue with the fireworks which meant they went off in two stages however we hope that didn't spoil anyone's enjoyment of the evening too much.

"I'm particularly pleased that the new disabled area was well-received and that those who made use of it, such as residents from Cotebrook House, were able to get a good view

of the display. Our thanks also go out to Betterprint who carried out a lot of work for us for nothing, the stall holders who kept the crowds well fed and watered and the rugby club who allowed us to host the bonfire here once again."

The Lymm and District Round Table is one of the most buoyant in the country with a large and enthusiastic membership and regular social and charity events planned throughout the year.

For more information on the Round Table visit [www.lymmroundtable.co.uk](http://www.lymmroundtable.co.uk) or contact Rik Wilson on 07766 461944 or [info@lymmroundtable.co.uk](mailto:info@lymmroundtable.co.uk)



## Thumbs up for Lymm pitches

LYMM Rugby Union Club were honoured to be visited by Keith Kent, Head Groundsman at Twickenham.

Keith is pictured with Lymm Rugby Union Club stalwart Jim Knowles (right) inspecting the Crouchley Lane pitch.

Keith was very impressed with the new pitches at Lymm and offered plenty of maintenance advice to Jim and his Grounds Team. An informal lunch was held after the tour of the grounds.

Keith was also accompanied by Ted Mitchell, Funding and Facilities Manager (North), Rugby Football Union.

Lymm are currently lying joint third in National League three.



## New service centre offers one stop shop

WARRINGTON MB Centre is a new Mercedes and Volkswagen Audi Group independent specialists which has opened at Kingsland Grange, Woolston.

With more than 60 years combined experience they employ factory and main dealer trained technicians.

They offer a real alternative to the main dealer at a fraction of the cost without a compromise in quality of work and have other branches in St Helens and Wigan.

The garage is a member of the good garage scheme, which allows customers to check and leave feedback on the quality of work.

With a good location on Kingsland Grange the garage is just minutes from Junction 21 of the M6 and ideal for the Lymm, Stockton Heath and Grappenhall areas of Warrington.

There is main dealer level diagnostic equipment on site and a brand new MOT lane is about to be installed.

All new tyre fitting equipment, laser alignment equipment is also on site making it a one stop shop for all your servicing needs.

While they specialise in Mercedes and VWs they also provide top quality servicing for all makes and models.

## WARRINGTON MB CENTRE



**Independent  
Mercedes & Volkswagen/Audi Group  
Specialists**



We service Mercedes, VW, Audi, Skoda & SEAT. All work is carried out by ex Mercedes & VW main dealer technicians with a combined experience of over 60 years and at a fraction of the main dealer cost

**All repairs carried out: Exhausts, Tyres, Clutches, Diagnostics  
VAG-COM and Star Diagnostics available on-site**

**Have your vehicle serviced to main dealer standards:  
from £150+vat for Inspection/B Service\* | from £100+vat for A/Oil Service\***  
\* using semi synthetic oil



**SERVICE + MOT FROM £130+VAT**



**01925 818180 or 07918 138231**

**Unit 19, Tatton Court, Woolston, Warrington WA1 4RR**

Good Garage Scheme



**£10 OFF ANY SERVICE OR REPAIR - WITH THIS VOUCHER**

**Not in conjunction with any other offer**

Celia Dunn, McCarthy & Stone  
retirement apartment owner

# My story?



**“The winter weather really brought to the forefront of my mind why I love being at a retirement development**

As a widow, the thought of those being alone in their house during the winter must be a nightmare. I'm able to pop down to the residents' lounge any time of day and find someone to have a chat with. The lounge is really warm and cosy and is used by all residents to meet, read, play cards and socialise meaning anyone who is looking for company can find it! Furthermore, being part of a community such as this means I know I will never be isolated and of course it is safe and secure.”



If you'd like to see more stories like Celia's, visit our website [www.mccarthyandstone.co.uk](http://www.mccarthyandstone.co.uk)

## Coming soon... New McCarthy & Stone retirement apartments

House Manager • 24-hour Emergency Call System • Security Entry System

**LYMM**

Booths Hill Road, WA13 0DW

**Coming Soon**

Call **0800 919132** or fill in the coupon

For more news & information from the McCarthy & Stone Group send to:  
FREEPOST RSCB-BRLE-HYKJ, McCarthy & Stone Retirement Lifestyles Ltd, ALTRINCHAM WA14 5LX

lymm.life/December

You may be contacted via the methods of communication for which you have provided details. Where a mobile number has been provided, you may also be contacted by SMS or other electronic means.

Enquiring on behalf of? Yourself ☐ Other ☐ New properties ☐ Previously owned ☐

Title \_\_\_\_\_ Name \_\_\_\_\_

Address \_\_\_\_\_

Postcode \_\_\_\_\_

Email \_\_\_\_\_

Tel and/or Mob \_\_\_\_\_



# Lymm Parish Council Annual Report 2010 - 2011

## Lymm Village Hall

Lymm Parish Council was awarded a grant by the Lottery Funded Awards For All for the refurbishment of the Village Hall kitchen and providing a toilet that is accessible by the disabled.

The work on both these projects has been completed.

The Village Hall now has a brand new kitchen with a large cooker, fridge, water heater and good storage space.

There is now a toilet in the Village Hall that is accessible by disabled users and there is a ramp access to the Village Hall. The Village Hall is available for hire and the current rate of hire is £10.00 per hour.

The Council Chamber is adjacent to the Village Hall and can be hired for group meetings.

The current rate of hire is £7.00 per hour.

To book the Village Hall please contact: Mrs Swindells - 01925 755494.

## Lymm Allotments

There are four allotment sites in Lymm at Star Lane, John Road, Sowbrook and Ashcroft Road.

There is at least a six year waiting list for a plot at all the allotment sites.

To go on the waiting list for allotments please contact: Mrs Cook 01925 753746.

## Lymm Projects

The Parish Council is currently having an archway manufactured to be installed at the top of the Dingle steps.

It is hoped that the archway will attract people visiting Lymm Dam to visit Lymm village.

A map of Lymm centre is also being prepared which will show visitors the range of cafes, public houses, banks, shops etc that are available in the village.

## Contact information:

Clerk of the Council:  
Mrs Cook  
01925753746  
ypcook@aol.com

Village Hall Caretaker:  
Mrs Swindells  
01925 755494

## Parish Council Website:

**[www.lymmparishcouncil.gov.uk](http://www.lymmparishcouncil.gov.uk)**

## Lymm Parish Council



Name: Cllr D Openshaw (Chairman)  
Address: 12 Booths Lane, Lymm WA13 0PE  
Telephone: 01925 753180  
07976 244 458  
Email: daveaopenshaw@aol.com  
Committee: Planning Applications sub-committee



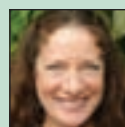
Name: Cllr P Powell (Deputy Chairman)  
Address: 215 Rushgreen Road, Lymm WA13 9QY  
Telephone: 01925754793  
Email: lympeterpowell@tesco.net  
Committee: Planning Applications sub-committee



Name: Cllr R Barr (OBE)  
Address: 2A Danebank Road, Lymm WA13 9DH  
Telephone: 01925 751817  
01925 750911 (fax)  
Email: r.barr@peartrees.com  
Committee: Village Hall sub-committee



Name: Cllr Mrs C Coupe  
Address: 2 Limefield Avenue, Lymm WA13 0BQ  
Telephone: 01925 755817  
Email: charlotte@problemsatwork.org  
Committee: Planning Applications & Village Hall sub-committees



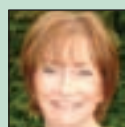
Name: Cllr Mrs P Gaster  
Address: 72 Whitbarrow Road, Lymm WA13 9BA  
Telephone: 01925 751595  
Email: poppyg50@hotmail.com  
Committee: Allotment Gardens sub-committee



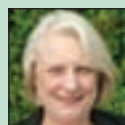
Name: Cllr June Gittins  
Address: 1 Longbutt Lane, Lymm WA13 0JB  
Telephone: 01925 753862  
01925 753456  
Email: june.gittins@elastomer.co.uk  
Committee: Planning Applications, Allotment Gardens and Village Hall sub-committees



Name: Cllr J Griffiths  
Address: 9 Manor Road, Lymm WA13 0AY  
Telephone: 01925 754651  
Email: joe.griffiths@lineone.net  
Committee: Planning Applications & Village Hall sub-committees



Name: Cllr P Hunter  
Address: 19 Sandy Lane, Lymm WA13 9HJ  
Telephone: 01925 754480  
Email: pam.hunter@uwclub.net  
Committee: Plans Sub-Committee  
Village Hall Sub-Committee



Name: Cllr Mrs P Marks  
Address: 80a Whitbarrow Road, Lymm WA13 9BA  
Telephone: 01925 753051 (phone & fax)  
Email: pammmarks@hotmail.co.uk  
Committee: Planning Applications and Village Hall sub-committees



Name: Cllr I G Marks  
Address: 80a Whitbarrow Road, Lymm WA13 9BA  
Telephone: 01925 753051 (phone & fax)  
Email: imarks@warrington.gov.uk  
Committee: Allotment Garden sub-committee



Name: Cllr Mrs S E Woodyatt (MBE)  
Address: 16 Oughtrington Lane, Lymm WA13 0RD  
Telephone: 01925 753850  
01925 758793 (fax)  
Email: swoodyatt@warrington.gov.uk  
Committee: Planning Applications sub-committee



Name: Cllr W N Woodyatt  
Address: 16 Oughtrington Lane, Lymm WA13 0RD  
Telephone: 01925 753850  
01925 758793 (fax)  
Email: nwoodyatt@btinternet.com  
Committee: Planning Applications sub-committee

# Return visit to Twickenham for U12s

**LYMM RFC U12s had a great start to the season winning an autumn double of Festivals at Stockport and Sale Sharks.**

At Stockport, they defeated Cheshire's finest rugby teams and won the prestigious Stockport Festival. This Festival always provides a benchmark for the new season as Lymm were able to improve on last year's high standard.

After so many Festival victories every opposition team came with their A team and ready to take on the Lymm team. But the Lymm boys were ready for every challenge and came out on top of the round robin league of Sandbach, Stockport, Macclesfield, Wilmslow and Altrincham Kersal. It was also nil tries conceded which demonstrates that the defensive attitude and commitment was right once again.

Two weeks later, the boys won back-to-back Sale Sharks Regional Festival and booked a return date at Twickenham in the Parade of Champions on Premiership Rugby Grand Final Day.

Playing in the North West Regional Festivals, the largest of the all the Premiership rugby clubs, the boys defeated all the top teams in the North West region including Bowdon & Cald.

Dwane Peal from Sale Sharks presented the Winners Trophy to the Lymm boys.

After the Stockport and Manchester Festival success, the A squad are now unbeaten in 22 consecutive Festivals

- starting in October 2009. In those 22 Festivals, the boys have won 18 (including 2 shared) and only been eliminated in the others through count-back or coin toss. In these 22 Festivals, the boys have played 121 matches and in 20 out of 22 Festivals, the boys conceded nil tries or 1 try only. This record has been achieved whilst playing the top teams from Cheshire, Lancashire, Yorkshire, Cumbria, Yorkshire, North East, Midlands, Wales (North and South) and London/South East. It includes back to back County and Regional Trophies, and a National title at Twickers. But perhaps the best stat of all is that 27 players have been part of this amazing record with 25 playing today either at Lymm RFC U12 or Lymm HS Y7.

If anyone would like to join Lymm RFC Mini & Juniors, in any age grade, please contact Nick Hughes (nhughes1007@aol.com or call 07834307556).





## hartwellddevelopments

You are only one phone call away from all these services:

- ELECTRICAL
- HEATING
- JOINERY
- REPLACEMENT WINDOWS
- EXTENSIONS
- PLUMBING
- GAS
- BUILDING
- RENOVATIONS
- NEW BUILD

# 757475



Tel: 01925 757475 Fax 01925 756886  
Camsley Grange, Camsley Lane, Lymm, Cheshire WA13 9BY  
www.hartwellddevelopments.com | info@hartwellddevelopments.com  
Registered in England 7283988

## The place for Christmas

Take the chaos out of Christmas this year with a little help from Fryers. With our vast array of dazzling decorations, 1000's of gorgeous gifts, beautiful real Christmas trees and plenty of other festive fayre, you'll have Christmas wrapped up in no time. **Perfect!**

# Fryer's

More than a  
**GARDEN CENTRE**



Nothing's good here at the moment

DON'T FORGET OUR  
*Santa's Grotto too!*

On the A50 one mile north of Knutsford  
Tel: 01565 755455 [www.fryers.co.uk](http://www.fryers.co.uk)

## Do you dream of a new kitchen?

Don't replace it  
**reface it**

Huge range of doors, worktops & modern handles

Less hassle  
Less time  
Less cost...



**KITCHEN BEFORE**

- Trusted reputation
- 50% deposit  
Balance on completion
- Worktops, appliances, sinks & taps



**20% Off**  
Throughout November\*

\*Terms & Conditions apply. Offer valid for November 2011 only. Not available in conjunction with any other offer.

## DREAM DOORS®

NEW LIFE FOR OLD KITCHENS

Visit our Showroom:  
92 Knutsford Road, Grappenhall, Warrington WA4 2PJ

Call for a **FREE** estimate: 01925 211308

[www.dreamdoors.co.uk](http://www.dreamdoors.co.uk)

View our credentials at  
[www.dreamdoors.co.uk](http://www.dreamdoors.co.uk)

**Checkatrade.com**  
Where reputations matter

# It's all going on in Warrington Town Centre this Christmas

## Rocking Christmas Weekend Friday 18 November

The Guardians get wrapped up!  
Market Gate

Christmas Lights Switch-On  
featuring Peter Andre

Admission by ticket only to Old Market Place.

Winter Craft Village  
Bridge Street, from 5pm

## Saturday 19 November

Warrington Music Festival  
Old Market Place, 12noon – 11pm

Vintage Christmas  
Warrington Market, 10am – 4pm

Winter Craft Village  
Bridge Street, 10am – 4pm  
Every Saturday until 17 December.

Jimmy Carr  
Saturday 19 November, Parr Hall,  
7pm & 10pm

## Big Christmas Market Saturday 26 November

Warrington Market's Christmas  
Market  
Warrington Market, 10am – 4pm

Santa's Grotto  
Warrington Market  
Crafty Christmas  
Hatters Row, 10am – 4pm

## Winter Village Spectacular Saturday 3 December

Made in W.A...Christmas  
Contemporary Design, Gift and  
Craft Fair  
Warrington Market, 10am – 4pm

Streets Alive!  
Hilden Square, from 12pm

## Family Christmas Cracker Week Thursday 8 - Thursday 15 December

Ken Dodd  
Thursday 8 December, Parr Hall, 7.30pm

The Ghost Spectacular  
Friday 9 December, Warrington Museum,  
5pm – 7pm  
call 01925 442399 for information. Aged 9+

Vienna Festival Ballet presents  
The Nutcracker  
Saturday 10 December, Parr Hall, 2.30pm

Christmas Stress Buster  
Saturday 10 December,  
Warrington Market, 10am – 4pm

Lantern Parade  
Thursday 15 December,  
Queens Gardens, 6.30pm

## Merry Christmas Countdown Friday 16 & Saturday 17 December

Warrington Male Voice Choir  
Christmas Voices, Christmas  
Brass Concert

Friday 16 & Saturday 17 December,  
Parr Hall, 7.30pm

For tickets call 01925 263951.

Houghton Weavers  
Friday 16 December, Pyramid, 7.30pm

Crafty Christmas  
Saturday 17 December, Hatters Row,  
10am – 4pm



Tickets for Pyramid  
and Parr Hall events on  
[www.pyramidparrhall.com](http://www.pyramidparrhall.com)  
or call 01925 442348.

It's all  
going on in  
Warrington



For more information call 01925 443322  
or visit [www.warrington.gov.uk](http://www.warrington.gov.uk)

# Dining Out with Lymm Life

at the Bear's Paw

**NOW the cold, winter nights have finally arrived, there are few more enjoyable ways of spending the evening than sitting down to a beautifully cooked meal in warm and comfortable surroundings.**

The Bear's Paw, at High Legh, certainly meets this criteria and when you add the rich atmosphere created by the beamed ceilings, the log fire and the friendly service in this 17th century hostelry, it has to come high on anyone's list of favourite places.

Jason and Melanie Craig have been running the Bear's Paw for eight years now and during that time have established a formidable reputation

for good food and drink.

We dropped in for one of our regular visits the other evening and, as usual, found the restaurant packed with people enjoying their meals.

We started our own meal with the soup of the day - cream of mushroom - and creamy garlic and Stilton mushrooms served on garlic bread.

For our main course we went for marinated sea bass, in extra virgin olive oil, lime and coriander and escalope of chicken with herb and garlic butter.

We could not fault anything. The food was tastefully presented and served hot and in generous portions.

There was an excellent range of desserts, some of which are clearly designed for folk with hearty appetites. We had to forego the pleasures of ticky tacky pudding and bread and butter pudding but thoroughly enjoyed the lighter sorbets and chocolate chip ice cream.

The Bear's Paw has an excellent range of wines and spirits as well as cask beers and speciality coffees, etc. It's "early bird" menu, served 6pm-7pm, Monday to Friday, is very popular and our only word of warning to prospective customers would be to book early, whenever you are thinking of going, to avoid disappointment.



## Weaste Lane - speeding incidents

RESIDENTS of Weaste Lane and Massey Brook Lane have won a battle to get the 30mph speed limit extended.

Road safety chiefs at the borough council agreed to the measure after hearing that 20 residents supported it and one objected.

Resident Bob Hignett said: "30mph signs is only the first step. We now need to find ways of ensuring people comply with the changes as drivers regularly pass our property at 50-60mph."

There was a fatal road crash on the road last year.

## Bears Paw Country Inn & Restaurant

Now taking bookings for Christmas Fayre  
Two Courses £15.95 | Three Courses £19.95  
Available from Mon 28th Nov - Christmas Eve

Fancy a game of 'Quizgo'?  
Try your skills with our New Bingo Quiz  
Every Monday night at 9.30pm  
Win prizes such as a Meal for Two  
Bottles of Wine or Vouchers

Introducing our New Winter Early Bird Menu. Served Mon to Fri. 6 till 7pm  
2 Courses £9.95 or 3 Courses for £12.95

With our Delicious Food, Cask Marque Ales our roaring fire, Hot Mulled Wine, and our reputation for excellent service. Enjoy your Christmas and New Year with us here at the Bears Paw.

Tel: 01925 752573 Warrington Road, High Legh



## JOLLY THRESHER



Higher Lane - Broomedge - Lymm, Cheshire

Christmas bookings now being taken

Carols around the Christmas Tree  
Thursday 22nd December

Christmas Eve Disco with the O'grady Roadshow

New Year's Eve with Cheap Cuts  
Tickets now available

Check out our new two courses for £9.95 menu  
Available Monday to Friday

Merry Christmas from Jonny, Mark, Olivia and the team

Good home-cooked food from our new menu, plus fine ales and wines, are served every day. Enjoy a great atmosphere and friendly service in our family-run pub.

Please call for reservations

Tel: 01925 752265



## NEW WINTER MENU 10% DISCOUNT ON 2 COURSE MEAL

Forthcoming events:

Saturday 19th November  
James Bond Casino Royale Charity Night.  
Dress up and play roulette and poker

Saturday, 3rd December  
Wild Western Night  
Tex Mex menu, fancy dress and disco

Terms and Conditions

All customers on the table must have 2 courses Does not apply to Meal Deal package

Spread Eagle, 47 Eagle Brow, Lymm, Cheshire, WA13 0AG  
Tel 01925 757467 Email spreadeagle@jwlees.co.uk



BE YOURSELF

3 Course Christmas Menu  
**SPECIAL OFFER**  
Book a party for over 8 people  
and the organiser  
**EATS FREE**

## Motoring

# Motorists in for a bumpy ride

**MOTORISTS in rural areas look to be in for a bumpy ride as eight in 10 councils experience a loss in funding.**

Eighty per cent of councils say they have suffered a real term loss in road funding over the last 12 months.

And 89 per cent of RAC patrols - who use the roads more than most people - say they believe current road conditions show the effects of under-investment in road repairs.

However, 80 per cent of councils are confident they are well prepared to deal with another harsh winter.

Research conducted by the RAC among councils and its own patrols has revealed widespread concern about the state of the road network, particularly in rural areas, as cuts to council budgets are increasingly hitting home.

The survey reveals that a year on from the Comprehensive Spending Review, 80 per cent of local authorities have experienced a real term reduction in funding to their road maintenance budgets - with 55 per cent of councils seeing an outright reduction in funding.

A further 25 per cent reported that funding had stayed at the same level, meaning a loss in real terms due to inflation in materials and labour costs required for road maintenance.

Even with the budgetary constraints, 50 per cent of councils reported a focus on permanent long-term fixes but 20 per cent reported they are prioritising short-term fixes for

safety reasons. Looking ahead to this winter, 80 per cent reported that they are well prepared for another winter of extreme weather and 50 per cent mentioned their well stocked salt and grit supplies.

Three quarters of RAC patrols think the condition of rural roads is poor or very poor, with just two per cent saying they are in good condition. In addition, two-thirds of RAC patrols think that suburban roads are in poor condition.

Motorists are equally concerned

about roads - 92 per cent of those questioned as part of the RAC's "Report on Motoring" said that they feel the condition of local roads is getting noticeably worse compared with 78 per cent who feel similarly about main roads.

## Five star safety rating

**THE Hyundai Veloster has been awarded the maximum five-star safety rating by independent vehicle assessment organisation, Euro NCAP.**

A rigorous test process resulted in class-best scores for the 1+2 door sports coupe.

The Veloster achieved a rating of 96 per cent in the "adult occupant" category, registering maximum points in the side barrier test and more severe side pole test.

In the "child occupant" category, the Veloster attained a score of 89 per cent.

The electronic stability program and seatbelt reminder systems contributed to the car's score of 71 per cent in the "safety assist" category.

The Veloster is the sixth consecutive Hyundai model to

achieve the maximum five-star score in the Euro NCAP safety program. The all-new i40 is the most recent car before Veloster to be awarded the top rating.

Allan Rushforth, senior vice president of Hyundai Motor Europe, said: "The five-star rating for Veloster further demonstrates our commitment

to the highest levels of safety for Hyundai customers. Veloster is attracting a new audience, combining practicality and 'fluidic' design in a unique 1+2 door package. Recognition of its class-leading safety performance will further add to its appeal."



UNIPART  CAR CARE CENTRE

**FREE Local Pick-up & Drop Off Service**

 **AUTOSAFE**  
Quality Assured

**Established 27 Years in Lymm**



**Agden Park Motors**



Park Garage A56, Agden Brow, Lymm

**5 Star**  
workshop facilities  
for servicing and repair

**Over 300**  
tyres  
at competitive prices!

**MOT Testing**  
petrol & diesel



**BODYSHOP**  
01925 752235



**AIR**  
CONDITIONING  
REGAS/SERVICE

**BIG ENOUGH TO COPE . . . SMALL ENOUGH TO CARE!**

**Contact ALLAN or GEOFF on 01925 752447**

# Girl soccer stars aim to repeat success

**LYMM Rovers Sharks girls' football team are on the lookout for more players since moving up in the Cheshire girls' league.**

The team came runners-up in the Under 12s seven-a-side last season - scoring 39 goals in 12 matches.

As a result they are now in the Under 14s league, which is an 11-a-side league.

They are keen to repeat last season's success story in the larger format of the game.

The current team consists of Sophie

Longton, Lizzie McDonough, Eve Pennington, Isobel Green, Francesca Hampson, Jess Impey, Aoife Davenport, Willow Viehoff, Jenny Rogers, Emma Frew and Molly Meadows.

Anyone wanting to join the team and help them repeat their success in the 11-a-side game should call Sarah Impey on 07811 907750.



THE LYMM HOTEL

## FESTIVE PARTY NIGHTS




**Party Nights**  
from £19.95 each  
Friday and Saturday  
throughout December

**New Year Family Buffet**  
£42.50 per adult,  
£22.50 children up to 12,  
Children up to 5 FREE!

**Christmas Day Lunch**  
£63.50 per adult,  
£29.95 children up to 12,  
Children up to 5 FREE

**New Year Ball**  
£64.50 per person

[www.MacdonaldHotels.co.uk/Lymm](http://www.MacdonaldHotels.co.uk/Lymm)  
The Lymm Hotel, Whitbarrow Road,  
Lymm WA13 9AQ | Tel 01925 752 233  
[general.lymm@macdonald-hotels.co.uk](mailto:general.lymm@macdonald-hotels.co.uk)



# Meet your MP

## David Mowat



David Mowat, MP for Warrington South, holds regular surgeries throughout the constituency. If you would like to arrange an appointment to discuss an issue of concern to you please e-mail him at [david.mowat.mp@parliament.uk](mailto:david.mowat.mp@parliament.uk) or telephone **01925 231267**.

**David Mowat**  
Member of Parliament  
for Warrington South

[www.davidmowat.org](http://www.davidmowat.org)

Produced by David Mowat MP,  
House of Commons, London SW1A 0AA

**LIVING • DINING • SLEEPING  
FLOORING • OCCASIONAL**

*Smart*  
**FURNISHINGS**



**NEW  
DINING GALLERY**





**FREE underlay & fitting  
on all stock carpets**



**FREE Local Delivery • FREE parking • Established family business**

Open: Monday - Friday 9am-5.30pm, Saturday 9am-5pm  
Smart Furnishings, Chapel Ln, Stockton Heath, Warrington WA4 6LL










and many more top names

[www.smartfurnishings.co.uk](http://www.smartfurnishings.co.uk) **T: 01925 267518**

**minikids**  
PRAM SHOWROOM  
PRAMS • ACCESSORIES • LEARNING AIDS

Stockists of:  
**ICANDY • UPPABABY  
NORTON • QUINNY  
BABY JOGGER  
MACLAREN & MORE...**

Mon-Fri 10am - 6pm  
Sat 10am - 5pm  
Sun 11am - 5pm  
**LARGE CAR PARK**

Tel: 01925 418314 • Website: [www.minikids.co.uk](http://www.minikids.co.uk)  
Email: [sales@minikids.co.uk](mailto:sales@minikids.co.uk)  
Unit 3 • Priestley Street (off Froghall Lane) Warrington • WA5 1TF



**Lymm Osteopathic Practice**  
Established 1979

**SUZETTE PULMAN, N.D. M.R.N. D.O.**  
Registered Naturopath & Osteopath  
**DARREN HAYWARD, B.Sc. (Ost)**  
Registered Osteopath

We are both registered with The General Osteopathic Council (G.O.Sc.)

Open Monday to Saturday  
**Tel: 01925 752264**  
The Rise, 16 Grammar School Road, Lymm WA13 0BQ  
(Easy Access Road Parking)  
Registered with all major insurance companies

**elmas**  
MEDITERRANEAN CUISINE

Award for Hygiene

Now taking bookings for  
**Christmas Day, Boxing Day  
and New Year's Eve**  
Open every day for Lunch  
11.30am - 11pm

2 Pepper St, Lymm WA13 0JB Tel: 01925 756049  
[www.elmasrestaurant.co.uk](http://www.elmasrestaurant.co.uk)

Christmas bookings now  
being taken 4 course £25

Wine tasting and Turkish  
gourmet evening 28th Nov

Lunch Menu - Fri, Sat & Sun  
11.30am-4.30pm 3 Courses  
for £12.50

Variety of Cocktails Available  
5 Star Hygiene Rated

16b The Cross, Lymm  
Cheshire WA13 0HU  
Tel: **01925 753079**  
[www.flavoursuk.co.uk](http://www.flavoursuk.co.uk)

Mon - Thurs  
4.30pm - 10.30pm  
Fri, Sat & Sun  
11.30am - 10.30pm

**Slimming World**

**MONDAY 7pm**  
Partington Community  
Centre, Central Road

**New Consultant**  
Tel: **Roberta**  
**07825 926003**

SAVE up to **£5** FREE online support

**0844 897 8000**  
[www.slimmingworld.com](http://www.slimmingworld.com)

*the club with the big heart*

**Slimming World**  
because you're amazing

**LYMM ELECTRIC & HARDWARE**  
EST 1974

Electrical Goods • Repairs • Rewires  
Alarms • Security Lights  
NICEIC approved electrical contractors

**Dyson/Vac repairs & Service**  
All work guaranteed

**01925 755252**  
12 Bridgewater Street, Lymm, Cheshire

**ABA Lymm**  
Accountancy and Business Advice Lymm Ltd.

- Local Chartered Accountant based in Lymm
- Free initial consultation
- Member firm of the Business Advice Service to start-ups and businesses
- Reliable and honest advice

22 Pepper Street, Lymm, Cheshire WA13 0JB  
Tel: 01925 756970 | Web: [www.abalymm.com](http://www.abalymm.com) | Email: [info@abalymm.com](mailto:info@abalymm.com)

We are a member of the ICAEW Business Advice Service **BAS**

**Hylands Hypnotherapy**  
Set Yourself Free

Lose Weight, Quit Smoking  
or De-stress

**Knutsford based Hypnotherapist & Life Coach**

**Karen Baker - Clinical Hypnotherapist**  
BSc (Hons) Psychology, Dip HSM, Dip AHL  
Master Practitioner Hypnotherapy

Tel: 01565 641 607 Mob: 07757 604 348  
Email: [karen@hylandshypnotherapy.co.uk](mailto:karen@hylandshypnotherapy.co.uk)  
[www.hylandshypnotherapy.co.uk](http://www.hylandshypnotherapy.co.uk)



# BARK BUSTERS

## HOME DOG TRAINING

- Any Problem
- Any Breed
- Anytime
- Barking
- Pulling
- Aggression
- Puppy Training



We come to you to solve your dog's problems

CALL 0808 100 4071 EMAIL [www.barkbusters.co.uk](http://www.barkbusters.co.uk)

## Warrington Fire Surrounds

### Fires, Fireplaces, Marble

**Quality Fireplaces at Affordable Prices**

A Full Range of Discounted Fires & Fireplaces  
Living Flame Gas Fires & Electric Fires

[www.warrington-fires.co.uk](http://www.warrington-fires.co.uk)

Marble Fireplaces • Made to Order  
Choice of colours • Fitting Service

**Quality, Value, Service Guaranteed**

Tel: 01925 417731  
8 Lovely Lane, Warrington Cheshire, WA5 1NF

Supplying Fires to Lymm for 12 Years




## Guaranteed savings for your home!

The Utility Warehouse 'Double the Difference' Price Promise means you can benefit from:

- The UK's cheapest Home Phone
- The UK's cheapest Home Phone and Broadband bundle
- The UK's cheapest Mobile tariffs
- The UK's cheapest standard Gas and Electricity



Ask for details!

Lymm Life

0800 955 5247

[info@lymmilife.co.uk](mailto:info@lymmilife.co.uk)

[www.utilitywarehouse.org.uk/orbit](http://www.utilitywarehouse.org.uk/orbit)



(Prices vary and conditions apply)  
For full details of the Utility Warehouse Price Promise see [www.utilitywarehouse.co.uk](http://www.utilitywarehouse.co.uk)

## Obituaries

### Josephine Kay

THE funeral has taken place of Mrs Josephine Kay (nee McAllister) of High Legh Road, Broomeedge, Lymm, who died on September 24 aged 89.

She died at her daughter's home in Swinton after a short illness.

Mrs Kay was born in Whitehaven, moved to Warrington in 1942 and lived in Lymm for more than 60 years. Her late husband Tony died in 1961.

She is survived by a son John, daughters Hilary and Valerie, six grandchildren and two great grandchildren.

The funeral was held at Altrincham Crematorium. Canon Michael Burgess officiated.

Mrs Kay was a war widow so

all donations went to the Poppy Appeal.

Funeral arrangements were by John Burrows and Sons of Lymm.



### William Cyril Ashton

THE funeral has taken place of Mr William Cyril Ashton, of Heyes Drive, Lymm, who died peacefully at home on October 6 aged 82.

Mr Ashton, widower of Mrs Margaret Ashton, was a policeman in Cheshire for 31 years, retiring in 1984. He had a long and happy retirement enjoying gardening, watching television and following football and grand prix racing, and holidaying in the UK especially Blackpool and North Wales.

He was survived by a daughter, sister and brother-in-law, two sisters-in-law, nephews, nieces and cousins.

The funeral was at Walton Lea Crematorium.

Funeral arrangements were by John Burrows and Sons, Lymm.

### Frank Openshaw

THE death has occurred of Frank Openshaw, aged 75, of Barsbank Lane, Lymm, who died in hospital in Liverpool. He was cremated at Altrincham Crematorium where the service was led by his brother, the Rev Donald Openshaw. Later there was a service at Lymm United Reformed Church, led by John Griffith.

Mr Openshaw leaves a wife, Ann, daughter Sue and two sons, Ian and Andrew.

He moved to Lymm in 1951 when his father became sub postmaster at Warburton Post Office.

He was an AA patrolman for 26 and was commodore of Lymm High School Sailing Club when his sons sailed with the club.

Mr Openshaw had been ill for some time.

Funeral arrangements were by John Burrows and Sons, of Lymm.

### Sarah Scott

THE funeral has taken place of Mrs Sarah (Sally) Scott (nee Siddons), of Burford Lane, Lymm.

She died in the Lady of the Vale Nursing Home, Bowdon, on September 16 aged 99.

Mrs Scott was born in Macclesfield in 1912. She worked in the silk industry and represented the town as Silk Princess in 1929.

During the war she worked in munitions and later became a proof reader for the Macclesfield Times. She gained diplomas and gold medals from the London Academy of Music and Dramatic Arts, and taught elocution. She was a switchboard operator for the North West Gas Board until retirement.

Mrs Scott was the widow of Kenneth Scott, who died in 1963. She leaves a daughter Pauline, grandchildren Catherine and John, great granddaughters Lindsey, Alice and Isobel.

A Requiem Mass was held at St Winefride's RC Church, Lymm, followed by a Prayer Service at St Alban's RC Church, Macclesfield, followed by interment at Macclesfield Cemetery.

Funeral arrangements were by John Burrows and Sons, Lymm.



Established 1878

**John Burrows & Sons**

Independent Family

**Funeral Directors**

M. G. Tandy

J. A. Tandy

16 Higher Lane, Lymm

Tel: 01925 752501

## CLASSIFIED

Call 0800 955 5247 to advertise

### ACCOUNTANCY & BOOKKEEPING

#### LYMM TAX SERVICES

Are you a business in need of a new accountant?

New chartered accountancy practice opening in Lymm to serve local small businesses

Low rates, high standards

Accountancy, tax, VAT, payroll and bookkeeping

Contact  
**jane@lymmtax.co.uk**  
**Tel 07759 051788**

(08/12)

### AIR CONDITIONING

**CLIMATE CONTROL BY WARRINGTON** based 4 Seasons, for offices, shops, surgeries, schools, homes and conservatories like yours! Installed in a day guaranteed 5 years. Keeping you cool when it's hot and warm when it's not. **www.4sac.co.uk 01925 756620**

(01/12)

### BATHROOMS



**The Bathroom Refurbishment Co.**

We can create the Bathroom of your dreams  
One Warrington based Company  
One Job from start to finish  
Unique 3D virtual CAD design system  
Please visit our website  
**www.bathroomrefurbishment.co.uk**  
Please Ring Wayne  
**01925 826 828 or 07976 574 828**

(01/12)

**LYMM KITCHEN & BATHROOM PROFESSIONAL INSTALLATION.** Ceramic wall & floor tiling. For free estimates and advice contact **Rob Evans on 01925 753752 business or 07763 770408 mobile.** Est. 2002. Local references provided

(12/12)

### BUILDING SERVICES

**BRICKLAYER AVAILABLE** for garden walls, pointing etc. **Tel: 01925 755441 Mobile: 07966 491624**

(12/12)

### CARPETS, CURTAINS & INTERIORS

**BRIDGEWATER FLOORING & Bridge and Wallace Interiors.** Carpets, vinyls, oak, laminate, karndean, commercial all supplied and fitted. Full range of blinds, made to measure curtains and hardware all supplied and fitted. Free parking outside the door. **A56 Agden Brow, Lymm, 01925 755805.**

(11/12)

**CURTAINS, CARPETS, VINYLs, blinds, wall paper, top brands including Harlequin, Jane Churchill and Casadeco.** Made to measure by friendly knowledgeable staff. Free carpet uplift and removal with any new carpet purchase. **Xross Interiors, The Cross, Lymm Tel 01925 758298 or email xrossinteriors@live.co.uk**

(03/12)

**CUSTOM-MADE** curtains and loose covers. All accessories supplied and fitted. Made-to-measure blinds. Our fabric or yours. **Tel: Orchard Soft Furnishings 01925 756388.**

(12/12)

**Paul Bains  
Flooring Solutions Ltd**



- CARPETS - WOOD - LAMINATES -  
- DECORATIVE VINYL FLOORING -  
- FREE CHOOSE AT HOME SERVICE -

101 Bucklow Gardens, Lymm WA13 9RN  
T: 01925 758835 M: 07973 376224  
E: paulbainsflooring@msn.com  
**www.paulbainsflooringsolutions.co.uk**

(12/12)

### CARPET CLEANING

**AT STAINBUSTERS:** Fully guaranteed carpet and upholstery deep dry cleaning. Clean & dry in only ONE hour. Quotes for both commercial and domestic. Contact the Local expert **John Latham on 01925 205210 or 07765 314080**

(04/12)

**SAFE/CLEAN: SAFE ORGANIC CLEANING.** Specialists in cleaning all leather and fabric upholstery, rugs, carpets and curtains in situ. Ask about our new organic allergy relief system, Guardsman stain protection plans and carpet repairs. **Richard Vaal on 0808 144 8178**

(04/12)

**SIMPLY THE BEST CARPET CLEAN YOU WILL EVER** have. Cleaners UK Ltd. Est 23 yrs. Have your carpets & sofas beautifully deep cleaned leaving them fresh smelling & colour restored. Latest & best methods. Dry/steam. Professional, reliable & affordable. For more info call **Neil Riley on 01925 264989/ 07831 336060 www.cleaners-uk.net**

(12/11)

### CENTRAL HEATING

**GAS SAFE REGISTERED ENGINEER.** Andy Gas of Lymm, specialist in: Boiler upgrades, servicing, repairs to all domestic heating and gas appliances. Professional service. **Tel Andy on: 07753 838129 or 01925 753712**

(12/12)

### CHILDREN'S ACTIVITIES

**TUMBLE TOTS** is the leading national physical play programme for children, classes available in Knutsford Hale & Bowden. We can be booked for private parties. **Contact Jane on 07812-144450. www.tumble tots.com/sale**

(12/12)

### CHILDREN'S THERAPY

**JANE FAY, REGISTERED PTUK PLAY Therapist** for children with behaviour or emotional problems, sleeping problems, anxiety, withdrawn, frequently angry, suffered bereavement/loss, ADHD, on autistic spectrum. **Tel 07703 661126 www.playtherapy4children.co.uk**

(05/12)

### CLEANING SERVICES



**arley's angels**

- Spring Clean Specialists
- Presenting your home for sale
- Moving house
- After building work cleans

**01925 266834**  
... because you're worth it!

(01/12)

### CLEANING SERVICES

**SIMPLY THE BEST CARPET CLEAN YOU WILL EVER** have. Cleaners UK Ltd. Est 23 yrs. Have your carpets & sofas beautifully deep cleaned leaving them fresh smelling & colour restored. Latest & best methods. Dry/steam. Professional, reliable & affordable. For more info call **Neil Riley on 01925 264989/ 07831 336060 www.cleaners-uk.net**

(12/11)

### COMPUTERS



**Having Trouble With Your Computer?**

Running too slow?  
Want to upgrade... go wireless?

**Call for experienced engineer**

**Tel: 07974 448 165 or 01925 751 546**

(12/12)

### DELIVERY SERVICES

**FURNITURE FERRY LIGHT REMOVALS.** Collections arranged from Ikea, Costco and other stores, garden centres, auctions etc. You choose, you buy, I deliver - SIMPLE. Reliable, inexpensive service. **Tel: Matt 07970 178 333 or 01942 732768. www.furnitureferry.co.uk**

(05/12)

**Lymm Life**  
also offers a cost effective  
local leaflet delivery  
service at competitive  
prices. We can also design  
and print leaflets with our  
in-house design team.

Call us now on  
**0800 955 5247**

### ELECTRICAL CONTRACTORS

**PAUL LEWIS ELECTRICAL SERVICES.** For extra sockets/lights, main board upgrades to full rewires, no job too large or small. No call out fee. All work guaranteed. **Tel 01925 758337 or 07966 386806.** Est 24 years.

(12/11)

**EVERGREEN ELECTRICAL CONTRACTING.** NICEIC approved contractor. For lights and sockets to rewires, fuse-box upgrades. Qualified electrician. All work is to the latest IEE wiring regulations. No job too small. Most major credit and debit cards accepted. **Tel: David on 01925 724219 / 07971 407022.**

(06/12)

**MC ELECTRICAL PART P APPROVED** Electrical Contractor, from rewires to inspection and Testing. All work guaranteed and certified to the highest standard. **Tel: Matt on 01925 756514/ 07900 938 178.**

(11/12)

**TRUST PROPERTY ELECTRICAL SERVICES.** NICEIC Part P Approved Contractor. All Electrical work undertaken. Inspection & Testing & PAT Testing. All work certified & guaranteed. **Call Tim on 07754409906 or 01925 601055**

(03/12)

### EQUESTRIAN

**LYMM RIDING SCHOOL.** Learn to ride with friendly atmosphere, group lessons or private. Horses/ponies well schooled. Lessons from £10, we offer tests with pony club cert, please ring for more details. Training for pony club. **Rebecca Bennett Reg AI. 01925 750435. Mob 07778 866006.**

(12/12)

### EQUESTRIAN SUPPLIES & ANIMAL FEEDS

**STABLES SADDLERY.** EST. 1964. Good stock of all equestrian supplies and animal feeds. Lots of interesting and unusual equine and canine collectables. **Tel: Barbara Williams on Lymm 752762.**

(12/12)

### FIRES & FIRE SURROUNDS



**Quality Fireplaces at Affordable Prices**

**WARRINGTON FIRE SURROUNDS**




**Fires, Fireplaces, Marble Best Prices**

**Quality Value Service Guaranteed**

**01925 417731**  
**www.warrington-fires.co.uk**  
**8 Lovely Lane, Warrington (follow signs for hospital)**

(01/12)

### GARDENING SERVICES



**A F GARDEN SERVICES**

**REGULAR MAINTENANCE**  
**TURFING, SOFT LANDSCAPING**  
**CLEARANCES, POWER WASHING**  
**HEDGE PRUNING**

**07796 818 686**  
**0161 928 1722**  
**www.afgardenservices.co.uk**

(01/12)



**Beechwood Industries Ltd**

- Garden Maintenance
- Lawn Care
- Landscape Design
- Construction
- Paving
- Tree Surgery
- Free Assessment
- Free Consultation

Contact us on:  
**07749 253 308**  
**01925 860544**  
**www.beechwoodindustries.co.uk**

(01/12)

### GARDENING SERVICES



**DUTTONS MOWERWORLD**

**Your local garden machinery specialist**

**SALES • SERVICE • SPARES • HIRE**

**Tel: 01925 740217**  
The Smithy, Daresbury, Warrington WA4 4AJ  
**www.duttonsmowerworld.co.uk**

(12/12)



**J C SLAVIN**  
**Landscapes & Garden Maintenance**

**Flagging • Driveways • Tree/Hedge Pruning**  
**Garden Clearance • Fencing • Landscaping**

**01925 756 839**  
**Mob: 07599 747 373**  
**www.jcslavinlandscapes.co.uk**

(08/12)



**JDS**  
**LANDSCAPE & GENERAL BUILDING SERVICES**

**Garden Design • Driveways**  
**Patios • Garden Walls • Fencing**  
**Decking • Resin Bond Driveways**  
See website for examples

**Tel: 01925 754883 Mob: 07515 987738**  
**www.jdscreate.com**

(12/11)

**LAWN DRAINAGE AND SOIL AERATION.** No trenches, no drainpipes, no digging, no repairs, no hassle. If this interests you **Contact Bob Harper 01925 266852 or 07952 608701.**

(12/12)

**M J NEEDHAM LANDSCAPES** Award winning with over 15 years experience. All aspects of landscaping, specialist in bespoke construction. Qualified design service available. **Contact 01925 825 645 or 07888 730 383**

(03/12)

### NEED HELP IN YOUR GARDEN?

All types of garden services  
**from only £10**

Professional, reliable service with  
20 years experience

**Call Richard**  
**07802 512263 or 01925 750418**  
**www.randrtreeservices.com**

(12/12)

**SIMPLY GARDENS CONSULTANCY** offers maintenance and design advice; maintenance schedules; planting plans; expert plant selection; on-site training. Regular or occasional maintenance can be arranged. **Call Graham on 01925 766873 or email gard.cott@btinternet.com**

(12/12)

### GATES



**Village Gates**

Manufacturers and installers of  
quality timber gates

**villagegates.co.uk**

For free quotes and advice call  
**01925 766629**  
Office Workshop and Showroom at:  
10 Charmack Road, Culcheth WA3 5SH

(12/12)

### HANDYMAN



**Handyman Services**  
**Home, Office & Garden**

Gutter Cleaning, Repairs & Replacement  
Welding Repairs & Fabrication  
Fascias, Soffits & Windows  
Patio & Driveway Cleaning  
All Garden Work, Flagging,  
Fencing & Turfing  
Interior & Exterior Painting  
Plumbing & General DIY  
You Name It - No Job Too Small!

**Tel Neil: 01925 757905**  
**Mob: 07813 201850**  
**handymanserviceslymm@hotmail.co.uk**

(05/12)

## CLASSIFIED

Call 0800 955 5247 to advertise

## DRESSMAKING

**BESPOKE DRESSMAKING.** Clothes made to your design and your clothes altered to fit you. Tel Nicky Leather 01925 815983, 07773 209786, www.bespokedressmaking.co.uk (J4/12)

## HAIR &amp; BEAUTY

**PROFESSIONAL MOBILE** hairstylist, creative cutting, colour/correction, including foiled highlights. Tel: Lorraine 01925 755441 / Mob 0786 7910805. (J3/12)

**MOBILE BEAUTY THERAPIST PHOEBE ELIZABETH,** Facials, Manicures, Pedicures, Aromatherapy Massages, Waxing, Pamper Parties, all in the comfort of your home Tel 07932 990 031, visit www.PhoebElizabeth.co.uk (J8/12)

## HYPNOTHERAPY

**MICHAEL MAHONEY** clinical hypnotherapist for IBS, Stress, Anxiety and many other problems. Medical Research project experience, BUPA Service Provider. For FREE information sheet please email TimelineServices@aol.com or ring 01925-658322 www.healthyaudio.com (G\*)

## IRONING SERVICES



**Carol's Ironing services**  
NEXT DAY PICKUP & DELIVERY SERVICE  
Next to Rushgreen Service Station, Lymm  
Tel: 01925 767945  
Mob: 07979 948197

## PAINTING &amp; DECORATING

**BENJAMINS PAINTERS AND DECORATORS.** 20 years professional experience in commercial and domestic decorating, wallpapering, coving, interior and exterior work. Telephone 07837 452514 or 01925 755198. (T11/12)

**N & K DECORATING SERVICES,** High Class Professional Decorators, Paper Hanging Specialist, Internal and External works undertaken, Lymm Based Company, Free Quotations. Call 01925 759936 or 07783 068377. (T14/12)

## PAYROLL

**WHY TRY TO BE A PAYE EXPERT?** Watkinson Black can provide a cost effective payroll service, releasing you to concentrate on your business. For further details please phone: 01925 413210 or e-mail: info@warringtonaccountants.co.uk (G\*)

## PEST CONTROL



**ATLAS FOR PEST CONTROL**  
Rodents, Fleas, Bed Bugs  
all pests eradicated.  
Domestic and Commercial.  
Fixed prices. Prompt service.  
**SPECIAL OFFER**  
Autumn Rodents  
ONLY £65  
Rats, Grey Squirrels, Mice  
Your friendly, local independent.  
07999 487 925 / 01925 445 222  
www.atlas4u.co.uk (J4/12)

**PESTAWAY SOLUTIONS.** All pest problems dealt with. Local lad. Competitive prices. All work guaranteed, 25 years experience. Call now on 07823 338682 or 01925 755702 (T9/12)

## PHOTOGRAPHER

**BRENDA GREEN ABIPP.** Qualified professional photographer for People, Environmental Portraits, Weddings, PR, Special Occasions. Established 30 years. websites: www.brenda.green.co.uk www.brendagreen @demon.co.uk Tel: 01925 753580. (T5/12)

**LOCAL PROFESSIONAL PHOTOGRAPHER** for your special wedding memories with stunning results. Will visit with samples and competitive prices. Also events and portraits. www.robyn.plus.com Tel: 07977 646 958 (J8/12)

## PIANO TUITION

**PIANO/KEYBOARD TUITION IN YOUR OWN** home. Experienced open minded tutor. All musical tastes catered for, including pop/rock. Flexible informal approach. Beginners esp. welcome, all ages catered for. Call Tony Hopkins (Dip ABRSM) 0161 973 0312 or mobile 07591 696388. (J8/11/12)

**PIANO LESSONS** - learn with a patient, fun and qualified teacher. B.Mus(RNCM), fifteen years experience + member of the European Piano Teachers' Association. All levels, ages, styles + theory / aural training: 01925 756669. (J6/12)

## PICTURE FRAMING

**EDGAR ART & FRAMING,** 19b The Cross Lymm. Picture framing, original art, jewellery, gifts and greetings cards. (Turn right at The Terrace Brasserie & Cafe and right again at the far end). Tel 01925 754700. (J12/11)

## PLASTERING



**B.E.A. PLASTERING OF LYMM**  
Full rooms plastered • Skimming  
Bonding • Stud walls built  
All repair work large or small  
Tyroleaning/Rendering  
Call David anytime on  
01925 753966 or 07786 245068  
www.beaplastering.co.uk  
Member of the Guild of Master Craftsmen (J3/12)

## PLASTERING



**LYMM PLASTERING**  
Time served Tradesman  
Clean and reliable  
Fully insured  
All areas covered  
No job too small  
Brian Gaffney  
Tel: 07967 087034  
(anytime) (T11/12)

## PLUMBING

**CL PLUMBING AND GAS SERVICES.** Local honest plumber covering all aspects of plumbing and gas works. Boilers and central heating installed and repaired. Bathroom suites supplied and fitted. Cookers and fires fitted. Landlord gas safety checks. All plumbing emergencies - 24 hour call out. No job too small, OAP Discount rates. Tel Craig 01925 819692 07851 405466 www.clplumbing.co.uk (J8/12)

**J R LEIGH HEATING AND PLUMBING.** Central Heating, boiler exchanges, all aspects of plumbing, full/part bathroom suites and tiling. Over 30yrs experience, fully insured. Gas safe. Phone 07969 917856 (J8/12)

**PB PLUMBING.** All domestic and commercial work. Fitted bathrooms and tiling. Small jobs welcome. Free quotes. Fully insured. C&G qualified. Gas Safe Registered Call 0161 928 3253 or 07821 554867 or Freephone 0800 824 7747 or visit www.pbplumbing.co.uk (J8/12)



**Plumbflow Ltd**  
Plumbing and Heating Services  
All plumbing & gas  
installation/repairs  
boiler replacement/servicing  
bathrooms  
Call today for a FREE QUOTATION  
01925 468003  
www.plumbflow.com (G\*)

## RE-UPHOLSTERY

**TRADITIONAL** and modern re-upholstery. Dining chairs, headboards, 3-piece suites etc. Customer's own fabric welcome. Tel: Orchard Soft Furnishings 756388. (T2/12)

## TAXI / PRIVATE HIRE SERVICE



**Frazer's of Lymm**  
Private Hire Service • Good local rates  
Reliable friendly service • up to five seater  
Airport • Station Schools • Business  
or pleasure for OAPs  
Contact Nigel on 01925 754426  
or Mob 07812 674822 (T2/12)

## TAXI / PRIVATE HIRE SERVICE

**HORNS FOR ALL YOUR TAXI** needs, airports, stations, nights out, business or pleasure prompt & reliable quality service, 4+7 seater air conditioned vehicles. Call Martyn on 01925 751761 or 07881 786250 (J8/11/12)

## TREE SURGERY



**R & R Tree Services**  
Tree Surgery • Pruning  
Hedges • Ground Clearance  
Professional Service, Fully Insured  
Call Richard Jennings  
07802 512263 or 01925 750418  
www.randtreeservices.com (J3/12)

## TUITION

**CHESHIRE TUTORIALS** offers tuition. Primary to 'A' level. Tutors especially primary maths, science and English welcome. Tel: 01925 758296. (J3/12)

**DYSLEXIA, DYSCALCULIA OR DYSPHAXIA.** Impeding literacy or numeracy? Specialist tuition for children aged 6 to 14+ from highly regarded, qualified and experienced professional. Contact Jenny Stanley B.Ed, Dip.SEN, Ad.Dip.SplD, Dip.Mus. Tel 01925 754594 or 07511 933026 (J8/12)

## TV - SATELLITE

**AERIALS 2000** of Lymm. No job too small. All work guaranteed. Aerials and satellites supplied and fitted. Sky subscriptions available. OAP reductions. Sky Digital / On Digital. 7 days a week. Tel: 01925 753427. Mobile: 07712 632315. (T12/11)

## WINDOWS &amp; GLAZING

**NEIL COPELAND WINDOWS & Conservatories Ltd.** Specialist in uPVC double glazing windows, doors, porches, conservatories, also fascias and guttering. FENSA registered. All work guaranteed. Tel: 01925 756138 / 07961 361550. (T2/12)

**SP GLAZING** for all your glazing requirements, double glazed units including failed and misted units, broken windows, mirror fixing. Kite marked to B/S. Time served glazier with over 30 years experience. For a friendly no obligation quote tel Sam Pendlebury on 01942 671859. Mob 07919 660296. (J4/12)

## MOTORING SERVICES



**PARKVIEW CAR SALES**  
We buy and sell  
QUALITY CARS  
Best price paid  
Telephone Peter on  
01925 575737 /  
07957 545479  
23 Podgate Lane  
Podgate, Warrington  
Cheshire, WA1 3RS (G\*)

## JEWELLERY



**evans & co**  
JEWELLERS & SILVERSMITHS  
**Jewellery Workshop**  
39 London Rd, Stockton Heath,  
Warrington, WA4 6SG  
Quality repair, remounting,  
design work and setting finished to  
a high standard.  
Loose certificated diamonds and  
gemstones supplied.  
Stockists of fine contemporary  
British Swiss and German jewellery.  
Tel: 01925 269292 (T11/12)

**WE BUY ALL GOLD & SILVER ITEMS.** Best prices paid at Knutsford's busiest jewellers established 1980. John Rees Jewellers, 91 King Street, Knutsford 01565 653 009. (J12/11)

## JOINERY

**SPM JOINERY,** 25 years experience. All aspects of joinery, garage conversions and extensions. Good rates, quality work and free estimates. Call 01925 754950 or Mob 07920 837852 (J4/12)

## KITCHENS

**LYMM KITCHEN & BATHROOM PROFESSIONAL INSTALLATION.** Ceramic wall & floor tiling. For free estimates and advice contact Rob Evans on 01925 753752 business or 07763 770408 mobile. Est 2002. Local references provided (T3/12)

## LOCKSMITH

**CHESHIRE LOCKSMITHS LTD** UPVC Door Specialist. Non Destructive Entry Service. Free Quotations. Lymm Based Business. Contact Tony 07774 805 588. (T4/12)

## OPTICIANS

**ADCOTT OPTICIANS.** State of the Art opticians in the heart of Lymm Village. Comprehensive sight tests and a wide choice of spectacles tailored to you, whatever your budget. 01925 757075 (T10/12)

In need of leaflets?

We can design, print and  
distribute with Lymm Life from  
**Only £250+vat**

Call 0800 955 5247

# Banner & Co

Independent Residential Sales and Letting Agent



## Dreaming of a new home



Merry Christmas  
from all the team at Banner & Co  
Sales • Lettings • Mortgages

01925 753636 [www.bannerandco.com](http://www.bannerandco.com)

*Please note that if you have already instructed another agent, we would advise you to check any agreement you may have to ensure you are not liable for more than one commission by instructing us as your agent*