

Culcheth *Life*

FREE EVERY MONTH

Issue: 98
May 2011

Dootsons
Family Law Specialists

See main ad
Page 8

23 Jackson Avenue
Culcheth
0845 330 5700

CULCHETH • CROFT • GLAZEBURY • GLAZEBROOK • LOWTON • WINWICK AND SURROUNDING AREAS

Boost for business

Page 3



**Farmers' Market
& Trade Fair**

coming to Culcheth



FarmersMarket@TaylorBusinessPark.com

All the latest news: www.culchethlife.com

Editor
Gary Skentelbery

Production
Paul Walker

Advertising
Freephone
0800 955 5247

Editorial
01925 623633

Email
info@culchethlife.com

Websites
www.culchethlife.com
www.frodshamlife.co.uk
www.lymmmlife.co.uk
www.warrington-
worldwide.co.uk
www.warrington.tv

Address
New Media Centre
Old Road Warrington
WA4 1AT

*Culcheth Life is published
monthly by Orbit News Ltd.*

*The contents of this magazine
are fully protected by copyright
and nothing may be reprinted
or reproduced without prior
permission of the publishers.*

*The publishers are not liable for
any statement made or opinion
expressed by third parties in this
publication.*

Printed by TwentyFourSeven

Editor's Comment



PAUL Taylor from Taylor Business Park should be congratulated on his new initiative for a farmers' market and trade fair on a field at the front of his site on Warrington Road.

This will hopefully provide a much needed boost for local businesses during these difficult economic times.

It is important that the whole community works together and with

Taylor Business Park being one of the key hubs of our local economy it is great to see them involved in such an enterprising initiative.

It provides a great opportunity to

showcase local products on a regular basis.

Events like Culcheth Community Day and Culcheth Victorian Day, when some local people get an opportunity to showcase their local produces and crafts, come just once a year, so this is a chance for local people to display their produce on a more regular basis.

Lets hope it proves to be a huge success providing a boost to the local economy.

I am sure it will provide a welcome boost for many local business people during these difficult economic times.

But remember - you've got to be in it to win it - so now someone has taken the lead - make sure you support it!

'Parking chaos' to be studied

COMPLAINTS about parking chaos in and around Jackson Avenue, Culcheth will be studied by highways chiefs - but not until the impact of new restrictions have been assessed.

Yellow lines are about to be introduced at the junction of Jackson Avenue and Thompson Avenue. Borough council officers want to see what the effect of these is before they carried out a wider review of parking in the area.

A spokesman said: "We will carry out surveys to determine the effects of the new restrictions and these will be analysed.

"Once we know what the new situation is, we will consult with residents."

Householders have been complaining about parking problems in the area for years.

Matters have been made worse in

recent months as a result of parking by builders' vehicles involved in construction work at the Culcheth Medical Centre.

This work has now been completed - and highways engineers will also be able to study the changed situation.

Financial Problems?

Commercial or Personal

For bespoke solutions contact local specialist

Roger White, MICM

For FREE Initial Advice

Strictly Confidential

01925 762497 or 07946 820299



Campbell Crossley & Davis
LICENSED INSOLVENCY PRACTITIONERS

Farmers' Market & Trade Fair

coming to Culcheth!



For more information or to apply for a **FREE** stand on the market's opening day please contact:



FarmersMarket@TaylorBusinessPark.com



Quality Kitchens & Bedrooms FAMILY BUSINESS EST. 1982



Let us turn your dreams in to reality with one of our beautiful craftsman built kitchens

- NEW Petworth in frame available in 10 colours
- COMPREHENSIVE Range of High Gloss Colours
- Blum Soft Closed Doors/Drawers on ALL Kitchens
- All our Kitchens and Bedrooms are manufactured on the premises.
- Free plan, Design and Quotation
- Supreme customer service, quality and value
- Kitchens and Bedrooms to suit all budgets

Culcheth Open: Tuesday - Friday 10am - 5pm
Saturday 10am - 4pm

St Helens Open: Monday - Thursday 8.30am - 4pm
Friday 8.30am - 3pm Saturday 10am - 1pm

14 Church Lane Culcheth 01925 766646 or Unit 11b,
Brindley Road (off Reginald Road) St Helens 01744 811687

Boost for local economy

TAYLOR Business Park is planning to launch a new Farmers' Market and trade fair on the last Sunday of the month, starting in May.

Business Park boss Paul Taylor is keen to promote local produce and is offering free use of land at the front of his business park to local suppliers for the initial event.

"There is not enough local produce being sold in the area despite there being at least six farmers within walking distance of the business park," said Paul. This is an opportunity for local farmers and suppliers to showcase what they have got on offer.

"It is also a great opportunity for

people thinking of starting their own businesses locally to test the market."

If successful it will become a regular event.

It is sure to attract great interest as Warrington Road is extremely busy at weekends with many heading towards Bents Garden Centre.

Paul has already contacted many local suppliers offering free stands but any one who is interested in having a stall at the event can contact him on 01925 763851 or by email at farmersmarket@taylorbusinesspark.com



Play area plan in sight of goal

A LONG-running campaign to provide a children's play area at Glazebury is gathering pace - and could be about to achieve its goal.

About 15 volunteers from the village have come forward to form a steering group and the play area could be created on a former overflow car park opposite Bents Garden and Home.

Bents and Culcheth and Glazebury Parish Council are both keen to see the scheme go ahead.

Cllr Sue Bland said: "Glazebury has never had a children's play area and we have had a series of public meetings on the issue.

"Originally the plan was to use land at the rear of the Scout Hut, but this has proved a costly option.

"I approached Matthew Bent, managing director of Bents Garden and Home, and asked if they could let Glazebury have a little bit of their old overflow car park. He thought it was a good idea.

"They were planning to use the land for allotments but have agreed a play area could be accommodated there as well.

"We are still in the early stages of this but I am hopeful it will go ahead. At the last public meeting, residents were asked which site they would prefer for the play area - the one behind the Scout Hut or the one opposite Bents. They opted for Bents.

"This is very good news - Glazebury has been without a play area for far too long." The parish council's environment committee has already given the plan its support.

FREE - Parking 100 yards away at The Red Brick Inn
PACKAGE FIREPLACES
FROM £399

NEW STOVE AREA WITH OVER 15 STOVES ON DISPLAY

PRICE MATCH

FAMILY RUN BUSINESS TRADING OVER 28 YEARS
 NO NEED TO CHANGE YOUR CARPET
 MADE TO MEASURE FIREPLACES
 WE FIT ALL ALL FIRE LINDERS,
 CHIMNEY POTS & CORNICES
 OVER 10 LIVE DISPLAYS
 OVER 2 FLOORS

Opening Times:
 Mon-Fri 9.30-4.30pm
 Sat 10am - 4.30pm - Sunday Closed

www.elbfireplaces.co.uk
 70 Twist Lane, Leigh, WN7 4DP
 Tel: 01942 607250

ELB
 Interior Care

Come And Meet The Experts

www.millercare.co.uk
Showrooms also at:
 Blackpool • Bolton
 Manchester • Oswaldtwistle
 Preston • Stockport
 Wigan

**Warrington's
 Only
 Stannah
 Dealer**

Millercare
 Mobility Specialists

1 Kingsway North, Manchester Road, Warrington WA1 3NL
FREEPHONE 01925 670433

Residents lose planning battle over stables

A LONG-running battle over plans for stables on Green Belt land at Culcheth has ended in victory for applicant Julie Twist.

Members of the borough council's planning committee approved the scheme despite strong opposition from nearby residents.

Their decision cleared the way for three stables and a storeroom, together with hard-standing, on land off Petersfield Gardens.

Councillors put off a decision on several occasions and visited the site twice before giving consent.

In addition to neighbours, there was also opposition from Culcheth and Glazebury Parish Council and Twiss Green Primary School.

Objectors claimed the proposed development would be inappropriate in the Green Belt, that increased traffic would cause danger in a

residential area and near to a school, that mud would be deposited on roads and there would increased noise.

They condemned the proposed development as a "blot on the landscape."

Over the last two years, two similar proposals, involving first 10 and later eight, stables have been rejected.

Planning officers recommended the scheme be approved and pointed out the planned stable block had been re-sited and reduced in size. Only three horses would be accommodated instead of eight and stables would, in any event, be acceptable in the Green Belt and would have no detrimental impact on the character of the area.

Appeal fails

A PLANNING inspector has dismissed an appeal by a resident of Newchurch Lane, Culcheth against the refusal of permission for a two-storey side and single-storey rear extension. The scheme would involve removal of an existing garage.

The inspector who dealt with the appeal said Newchurch Lane consisted mainly of similar pairs of semi-detached dwellings with good separation at first floor level, giving the area an open and spacious feel. The proposal would harm the street scene by reducing the gap between the property and the house next door.

Free varicose vein information evening

Tuesday 24 May 7.15pm

If you suffer from aching legs or are unhappy about the appearance of varicose veins, Spire Cheshire Hospital can help.

At our open evening you can find about the various treatment options including laser varicose vein treatment, a quick, minimally invasive procedure with minimal scarring.

Presentations given by our consultant vascular surgeons start at 7.15pm with light refreshments from 7pm.

To reserve your place(s) simply call

01925 215029 or email
 cservice-ch@spirehealthcare.com
 www.spirehealthcare.com/cheshire



Spire
 Cheshire Hospital

Turn trash into cash

BUSINESSES and individuals in Culcheth are being urged to turn their trash into cash to help local guides.

The 7th Culcheth Guides have launched an appeal to raise funds through the recycling of mobile phones, personal digital assistants (PDAs) and printer cartridges, via The Girlguiding UK Recycling Appeal.

Group spokeswoman Sara Isles said: "This will help 7th Culcheth Guides make money from items normally thrown in the bin."

"The Girlguiding UK Recycling Appeal will give 7th Culcheth Guides cash for each reusable item received on their behalf."

The group is urging local businesses to help by saving used

printer cartridges and old phones - the guides will arrange the collection of items.

Sara said: "Supporting the appeal has a positive impact on the environment as it diverts mobile phones, PDAs and printer cartridges from landfill."

"These items contain toxic substances which, if they are dumped, can leak into the surrounding soil and pollute the earth. Donating them means they can be reused or disposed of safely."

Further information is available on the guides' website www.7thculchethguides.co.uk

Way cleared for more car boot sales

A PLANNING inspector has ruled that the number of car boot sales held at Townfield Lane, Winwick can be doubled to 28 a year - despite road safety fears arising from motorists illegally turning right into the site from the A49 Newton Road.

The borough council refused planning consent for the increase last year, but an appeal has been allowed.

The sale operators have permission to hold 14 sales a year under permitted development rights. They also had permission to allow other uses, such as circuses and funfairs to use the site, for another 14 days.

But they agreed to forego the 14 days of other events in favour of increasing the number of car boot sales to roughly fortnightly use.

The inspector who heard the appeal decided the additional 14 sales would not amount to a material change of use of the land.

He decided the increased number of sales would have an impact on the openness of the area, but that this impact would not be significant.

Although there was congestion, including illegal right hand turns, it was not the applicant's fault if visitors did not observe traffic regulations.

He did not regard car boot sales as an inappropriate use of Green Belt land.

Ratcliffes cyclelife

BIKES • SPORT • CAMPING • MODELS

Raleigh Molly

- FOR GIRLS 3+
- 3 SIZES
- DOLLY SEAT WITH MOLLY THE DOLLY
- FURY SEAT
- STABILISERS



FROM £99.99

FREE Cycle Helmet

With every bike bought with this advert
Offer ends 31.05.11



Brompton Folding Bikes

- 16" WHEEL • 3 SPEED OR 6 SPEED
- COLOUR OPTIONS AVAILABLE
- LIGHTWEIGHT
- DIMENSIONS FOLDED • 22.2" x 21.5" x 10.6"



FROM £700

Diamondback Skindog

- 25/9 DRIVE CHAIN
- RED OR WHITE
- 3 PIECE CHROMO CRANK SET



SAVE £50
WAS £279.99
NOW £229.99

Electric Bikes

- POWABYKE • 6 SPEED SHIMANO
- RANGE UP TO 20 MILES • SIZES: 18" & 21" FRAME
- WEIGHT: 21 KILO LADIES VERSIONS AVAILABLE



£899.99

113a BRADSHAWGATE, LEIGH WN7 4ND
TEL: 01942 673481 www.ratcliffesofleigh.co.uk



Risley Day Nursery

Member of



National Day Nurseries Association



INVESTOR IN PEOPLE

Come and see why we will make your child's day special!

At Risley Day Nursery, we understand what is important to both parents and children, and our aim is to provide the perfect solution to any parent looking for childcare for their little one. The nursery has an excellent reputation in providing a home from home environment enabling all children to feel confident and secure. So whether you are looking to return to work, moving area or whether you just want your child to have the best opportunities in their life, then come to Risley Day Nursery and see how we can help!

- ICT facilities in all rooms
- Healthy and nutritious menus
- All dietary requirements catered for
- Highest rating of 5 stars for the "Scores on the door's" food hygiene scheme run by the council
- Pre-school extra curricular activities including French lessons & PE
- Music and movement for all ages
- Good Ofsted report
- Bright and stimulating environment
- Large outdoor play area
- Fully qualified and experienced staff
- Early Years Professional
- Open 7.45 - 6.00pm 51 weeks a year
- Ages 3 months - 5 years
- Free trial sessions

Hidden extras include:

- High quality nappies and wipes
- Sun hats, sun cream and pump bag
- Toothbrushes and toothpaste

10% OFF

your first months fees when you book a place with us

For more information or to arrange a visit, please call on 01925 828980

Or alternatively visit our website www.risleydaynursery.co.uk

14/15 Delenty Drive, Birchwood, Warrington, WA3 6AP

Church's battle with death-watch beetle

ST Oswald's Church, Winwick, is now well into a year of fundraising, following the discovery of death-watch beetle in the nave roof late last year.

English Heritage has agreed to give a substantial amount of financial support - but the church itself has to raise £200,000 by the end of the year.

Church Council member Fiona Forsyth said: "It will require a massive effort, and we are fortunate that we have gained the help of many people who, while not attending church regularly themselves, see in St Oswald's a vital part of the village community."

"A huge programme is under way. We are raising money by events,

appeals to corporate sponsors and grant-making bodies and by donations from all sorts of individuals, connected to the church, connected to the village or just sympathetic to our aims.

"This project has seen the village decide to do it all it can to keep the church open: as one person put it, we all want a village in which the important points in our lives can be marked in an ancient and beautiful church."

Winwick and its church was mentioned in the Domesday Book,

while the discovery of a Saxon cross fragment in the churchyard points to worship from the very early days of Christianity in this country.

Fiona added: "My father-in-law told a story handed down to him about a Civil War sniper using the church tower as a vantage point, and I

discovered that Cavalier troops did indeed shelter in the church after the Battle of Red Bank just up the road towards Newton-le-Willows.

"As in many villages, the church is at the centre of our own little bit of the country's history, showing us the impact of the facts written in our history books on the lives of people like us through the ages.

"But history and heritage never end, and we are creating the next chapter in the history of our community. One of the most exciting things to come out of this time of hard thought and hard work is the realisation that the project is offering us an opportunity to change for the better.

"Our slogan is 'One Winwick' and it sums up our determination to offer our village a church which is not just a physical building, secure and beautiful, but a

spiritual support at the heart of community life."

Further information can be obtained from the website www.stoswaldswinwick.com or from the Rector, Canon June Stevenon (below) at the Rectory, Golborne Road, Winwick.



**rated #1
full service digital
design agency in
warrington***

CARPE DIEM

WEB // DESIGN // VIDEO // + MORE

+44 (0)1925 299 842 www.carpe-diem.co.uk

**RAR+
TOP 100
AGENCY 2010**



**THE
BLACK
SWAN**
Pub & Dining

**WELCOME
TO YOUR LOCAL**




UPCOMING EVENTS:

Easter Egg Hunt - Monday 25th April
Children's Entertainer & Balloon Modelling from 12pm

Royal Wedding - Friday 29th April
Free Wedding Cake & Special offers

**£10 OFF
a meal for 2
or £5 OFF
a meal for one**

Not to be used in conjunction with any other offer or voucher. Discount off food bill only. Valid until 30/09/12. Code: Cdd56

- 20% off food bill Mon & Tues
- New Menu to choose from
- Live Music - Friday
- Karaoke Saturday



FOR BOOKINGS & ENQUIRIES

TEL: 0161 222 4444

Manchester Rd, Rixton, Warrington, Cheshire WA3 6LA
info@theblackswan-pub.co.uk

**THE OLD VICTORIAN
SWEET SHOP
&
TEA ROOM**

Fruit & Vegetable Stall
Weekends only

Friday, Saturday, Sunday Starts Good Friday 22nd April

Fresh Fruit, Vegetables & Free Range Eggs from Springfield Market

Closed Easter Sunday

 **Royal Wedding Day** 

Watch the Royal Wedding here on Flat screen TV

Table bookings being taken for:

Morning 9.30am - 12.30pm for breakfast - £9.99

or

Afternoon 12.30pm - 4pm for high tea - £15.95

or

The whole day for breakfast & high tea

Bring your own booze. Only permitted after 12.30pm

Non refundable deposit of £5 per person for the morning

Non refundable deposit of £10 per person for the afternoon

Tel: 01925 763827 Fax: 01925 765067
90 Warrington Road, Glazebury WA3 5NH



Daffodils for 'Mums'

CHILDREN from Glazebury CE Primary School attended the special Mothering Sunday service at All Saints Church, Glazebury and handed out bunches of daffodils to all the 'Mums' present.

Among others at the service were the chairman of Culcheth and Glazebury Parish Council, Cllr Helena Campbell, who is pictured with the Minister, the Rev Pat Grey and Glazebury Gala Queen Bethan McDermott.

Try a Mini Break at one of the region's top care homes



If you need a short term stay or just want to see what life in a reputable care home is like, to see if it's right for you – this is a great offer.

Charitable care provider, CLS, has a limited number of rooms available at its Culcheth home, Holcroft Grange. What's more, CLS is making these rooms available at an incredible special offer rate of just £29.99 per day.

As a 'CLS Mini Break' guest, you'll get to see what Holcroft Grange is all about. You'll be invited to take part in all social activities and outings, and you'll be fully supported by our qualified and dedicated care team.

For further information or to book your place, call 0800 731 1325 today, or visit us in person at:

CLS Mini Breaks
for **£29⁹⁹**
per day*

Holcroft Grange:
Jackson Avenue,
Culcheth, Warrington,
WA3 4DZ



caring for people



*Offer valid at Holcroft Grange for a maximum stay of two weeks, subject to availability.

www.clsgroup.org.uk

Springtime

 2 for £20.00 Buxus Ball £14.99 each	 Save £50.00 <small>NORMAL PRICE £199.99</small> 3 Seater Hammock (Cappuccino) £149.99 each
 Save £20.00 <small>NORMAL PRICE £29.99</small> Black Kettle Barbecue £9.99 each	 2 for £10.00 Hardy Fuchsia <small>2 litre pot</small> £6.99 each

Offers available until 15th May 2011 or whilst stocks last. Subject to availability. Prices correct at time of print.

High Legh Garden Centre

High Legh • Knutsford • 01925 756991
www.strikes.co.uk



DOOTSONS LLP

We are here to help when relationships break down

We can also help in advising you prior to a new relationship on how best to secure your financial position in the unfortunate event it does not work out.

We have been providing legal services to Culcheth residents for over 25 years and have built a strong reputation in this sensitive area of law.

We will provide you with clear advice delivered in a down to earth way and will provide clear information about the cost of the work involved.

We can assist you with:

- Divorce
- Separation
- Property Disputes (married or unmarried)
- Civil Partnerships
- Children Disputes
- Change of Name
- Pre-nuptial agreements
- Financial agreements prior to living together

Contact us to arrange an appointment with **Michele Wright**

A first half hour free interview or fixed fee interview may be available – please ask.

Free Car Parking For Clients

**For all your legal needs
CALL US 0845 330 5700
(calls charged at local rate)**

dootsons
SOLICITORS LLP
working for you, working with you

23 Jackson Avenue, Culcheth
CALLS AT LOCAL RATE
0845 330 5700
www.dootsons.co.uk

CULCHETH • LEIGH • ATHERTON

Community Day

FINAL preparations are now being completed for Culcheth Community Day - the day when the whole community is invited to come together on the Village Green.

Chairman of Culcheth and Glazebury Parish Council Cllr Helena Campbell will officially open the event on Bank Holiday Monday, May 2 at 12 noon.

This year the main attraction is a

display by Ridgeway Falconry which will give visitors an opportunity to see magnificent birds of prey close-up, marvel at their incredible flying displays and see how the bird handlers control the birds.



The H & M Dogs display at last year's Community Day

UNSWORTH'S FUNERAL SERVICE

Independent family owned Funeral Directors
489 Warrington Road, Culcheth

Providing 24 hour personal care by Jackie Unsworth, Phil Done, Kevin Melling and Tim Hargreaves-Stead

Tel: 766006

Me Dee's
COFFEE SHOP - Have coffee the sun!
**Open All Day on
Community Day**
Extra outdoor
seating available
Tel: 01925 765003
56 Lodge Drive, Culcheth

Croft Riding Centre

- Riding School Group/Private Lessons
- Novice/Advanced Riders
- Pony Club Centre

Learn to Ride & Keep Fit in our
2 Indoor Arenas / Outdoor Arena
& Country Course

Spring Lane, Croft, Warrington. WA3 7AS Tel: 01925 763715
www.croftridingcentre.co.uk

y is here again!

Also in the main arena will be Tyldsley Brass Band, Trumble the Clown, Academy Karate Display, a pet show - for which entries can be accepted on the day - and a tug of war competition between local pubs, clubs or firms.

Last year's winners, the Cherry Tree

pub, is expected to be defending its title.

There will also be stalls and sideshows, children's rides, classic cars and motor cycles and plenty of spaces for local charities, voluntary groups, clubs, etc to show what they have to offer.



Trumble the Clown keeping the children entertained at last year's Community Day

The Gardening Guide

May...



- Remove any dead flowers from plants to promote further blooms.
- Plant up stylish containers & baskets ready for a stunning summer display.
- Help the environment by composting all your garden waste.
- Plant vegetable seeds such as potatoes, carrots, peas & lettuce.
- Start planting new bedding plants to ensure beautiful summer colour.

May is BBQ month at Bents - pop in for some great offers & demonstrations.



www.bents.co.uk

HH HUNTER HEALEY CHARTERED ACCOUNTANTS

- Professional, approachable, affordable
- Accounts preparation & tax returns for individuals & companies
- Bookkeeping, payroll & vat
- Capital gains & inheritance tax planning
- Business start up advice
- First meeting free of charge

Call Nigel Healey now on 01925 767222
Abacus House, 450 Warrington Road, Culcheth WA3 5QX
www.hunterhealey.co.uk

M. J. NEEDHAM LANDSCAPES

**Award Winning
with over 15 years experience**

All aspects of landscaping

Specialist in bespoke construction

Qualified design service available

**01925 825645
07888 730383**



Here's a thought:

**Al fresco,
all together,
all here.**

You really can get it all together at Bents this summer.

We've every creature comfort for stylish outdoor living, from extensive displays, including exclusive-to-Bents designs, to chimeneas and barbecues, parasols, lights and lanterns, tableware and garden games.

Fresh air and fresh thinking from Bents.



www.bents.co.uk

For beautiful living

Bents Garden & Home, Warrington Road, Glazebury, Warrington WA3 5NT.
Telephone 01942 266300. Open 7 days and Bank Holidays, Mon-Fri until 6pm.

Motoring



Who needs artificial potholes?

TWO harsh winters have wrought havoc with local roads and potholes have become big news. So it may come as a surprise to some that there is a need for artificial potholes.

Who needs them? Car manufacturers, of course!

An example is Ford's Lommel Proving Ground in Belgium where there are miles of test track that specifically re-create potholes and the other sorts of damaged road surfaces drivers can expect to encounter.

Ford engineers know that not all roads are created equal. Some are pockmarked with potholes. Others simply consist of merciless off-road-like tracks. Only a few roads are kind to the vehicles driving over them.

Engineers know that too many drivers speed over four-inch-deep potholes or take turns too fast on cobblestone roads.

So Ford simulate road conditions ranging from the moderately rough roads to be expected in the UK, Europe and the US to the severely rough roads in emerging markets, taking into account that weather conditions can make these roads even worse.

Public spending cuts have added

to the problems caused by the two cold winters so Ford aim to ensure all their vehicles are built to cope.

All new Ford models are put through a tough testing and development process to ensure they not only offer class-leading levels of ride comfort for occupants but are easily capable of withstanding the loads placed upon components by damaged road surfaces.

The Lommel Proving Ground subjects new vehicles to a variety of highly demanding road surfaces and features some 50 miles of test track, many of which are designed specifically to put suspension systems to the ultimate test.

"We have created some of the worst potholes in Europe on our own test track. If our cars can pass these tests, then they can cope with almost anything they encounter on public roads," said EricJan Scharlee, technical specialist at Lommel. "You name the road surface - we have it at our proving ground."

Alfa's sporty Giulietta

THE latest incarnation of the Alfa Romeo Giulietta was launched last year to celebrate the Italian car manufacturer's centenary.

As one would expect from Alfa, it's a sporty model, designed to compete in the mid-size C-segment which now contributes one out of every four new cars sold across Europe.

It incorporates a range of advanced engineering and technical solutions to ensure the Giulietta can meet the needs of all customers in the sector, combining impeccable safety credentials, Italian style, comfort and functionality and, of course, oomph!

In addition, every customer can adapt the car to their specific driving

requirements, thanks to Alfa's DNA selector.

There is a range of five engines, three petrol and two diesel, all of which are turbocharged and Euro 5 emissions compliant.



Catherine prepares for crowning glory

IT will be a real family affair when Catherine Stafford is crowned Newchurch Rose Queen.

A pupil at Newchurch CP School, Catherine, whose dad Chris is Rector at the church, enjoys crafts, painting, modelling, baking, swimming and is a member of the guides and plays the trombone.

She will be crowned at the church on May 15.



National Vaccination Month returns!

THE number of animals vaccinated in the UK has slowly dropped as pet owners have become confident that the UK is disease free!

However, this is simply not the case and more and more vets are seeing the devastating effects of preventable diseases such as Parvovirus return with a vengeance.

National Vaccination Month aims to raise awareness of the importance of regular vaccination and how a simple annual booster can protect your pets against some serious and deadly diseases.

If your pet's vaccinations are out of date, during May 2011 Medivet is offering you the chance to re-start your pet's vaccinations and receive a full health check for the price of an annual booster, saving you 50% off the re-start price!

In 2009 the National Vaccination Month campaign ensured an extra 40,000 pets (across the UK) were vaccinated – a whopping improvement of 20%.

The more pets that are vaccinated, the less the risk to your pet and everyone else's.

Culcheth Veterinary Surgery



Rutland House
VETERINARY HOSPITAL

**We are supporting
National Vaccination Month
throughout May 2011**

Protect your pets against serious and
deadly diseases! Please call us for details

- Consultations 6 days a week - Late night clinic every week

487 Warrington Road, Culcheth, Warrington, WA3 5QU

Tel: 01925 764088

culcheth tyres and autocentre TYRE SAFETY

Culcheth tyres are offering customers FREE tread, Pressure and general condition checks for their tyres.

Culcheth Tyres are committed to tyre safety. Customers having such checks can be confident that their tyres are performing correctly. Due to recent road conditions i.e. pot holes, more cars are having their wheel alignment damaged thus resulting in uneven tyre wear, as a result we are offering a FREE WHEEL ALIGNMENT CHECK up to the month of May

**NOT ONLY COULD A FREE CHECK SAVE YOU FROM PROSECUTION,
IT COULD HELP SAVE LIVES**

You can find us on Taylor Business Park, Risley, Warrington, Cheshire,
WA3 6BL or for Free honest advice call: 01925 766 380 / 766 987

styles and co
chartered accountants

- Tax Planning
- Corporate Finance
- Audit & Accounts
- Management Accounts
- Business Development
- Business Sales & Acquisitions
- Forensic Accounting

**Heather House,
473 Warrington Road,
Culcheth, Warrington,
WA3 5QU**

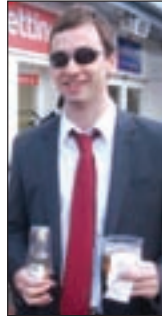
**Tel: 01925 761600
Fax: 01925 761601**

**Email:
mail@stylesandco.co.uk**

THE STYLES FILES styles and co
chartered accountants

Training at Styles and Co

"Where do I start? My name is Chris Neild and I have been a Trainee Chartered Accountant at Styles and Co for nearly 3 years. The first thing that struck me when I first started was that there would be a lot to learn and the curve would be quite steep. However, I can honestly say that I have never learnt so much in such a short space of time. I have gone from knowing absolutely zilch about accountancy to preparing statutory financial statements, management accounts, assisting on audit visits and much more! For this I must say a big thank you to the team, because everyone in the office has helped me at least once (some hundreds of times!) and couldn't have been any more approachable.



Chris getting some training in the way we do it at Styles and Co on a firm's day out to Chester Races.

If you were to go to a comedy gig you may find an accountant may be the butt of a joke, stereotyped as being a nerdy, bookish, office dweller who bores to death all they

come into contact with. The reality at Styles and Co couldn't be any further from this. Everyone is energetic and enthusiastic about what they do and the atmosphere in the office is fantastic. What strikes me is that everyone seems to be constantly on top of their game and developing new ways to help our clients. The team work's hard, but certainly know how to play hard- anyone at the Lowry last Christmas would testify to that!

As soon as I started at Styles and Co I was thrown in at the deep end, tackling accounts work from the get go, being given responsibility and encouragement to put forward my own ideas and suggestions. This is such a refreshing change to the 'sit back and observe' approach of other workplaces, which is backed up by an excellent support system. The firm places a great emphasis on developing new trainees into managers of the future. The study support I have received has helped me to the halfway stage of my professional examinations, with more exam success (hopefully, fingers crossed) to come in the near future.

As I write this I have just moved to a new location within the office, assisting in the Corporate Finance/ Tax department, whilst continuing my work on statutory accounts and audits. No day is ever the same, the pace is fast and the workload always challenging. I wouldn't have it any other way."

At Styles and Co we are keen to develop our team and promote from within wherever possible. It is for this reason that we employ a serious amount of time and effort into developing our trainees in the best ways possible. In recent years, we have chosen to take on accountancy trainees straight from school, with good A Levels, who commence the AAT study route towards Chartered Accountancy.

The AAT Accounting Qualification provides an alternative, vocational route towards a career in Chartered Accountancy rather than the more traditional University route. Generous examination exemptions are given to qualified AAT members when commencing study for their Association of Chartered Certified Accountants (ACCA), which means it is possible to qualify a year ahead of equivalent graduates without the student debt!

We anticipate continuing to develop our team through the AAT training route as well as other ways in the future. So, if you, or somebody you know, is an ambitious and professional school leaver who might be interested in joining our team as an AAT trainee in September, we are currently taking enquiries. Please contact Human Resources by email at monique.wood@stylesandco.co.uk to register your interest.

The Styles Files are provided by Styles & Co 473 Warrington Road, Culcheth, Warrington WA3 5QU
For further details please telephone 01925 761600 or visit our website at www.stylesandco.co.uk

Bespoke Kitchens - Bedrooms & Bathrooms
DESIGNED & HAND BUILT FOR YOU! ESTABLISHED OVER 40 YEARS

Delaware Kitchen
IVORY
Over 60 exquisite Kitchens
From £5,000 to £10,000+

Cash & Carry From £499 to £999
NEW Budget Kitchens
6 piece kitchen
Ideal for apartments and rental properties. All ready assembled with sink & top
Choice of door colour, handles & worktop
Additional units available from £25
All this £399

Over 30 Bedrooms
WARDROBES
FROM \$99 TO \$399
RUCHON BEDROOMS & SOME FRENCH COLLECTION

Replacement Doors & Worktops
NEW RANGE OASIS WORKTOPS
3m - 38mm
\$59 each
Approx. in 10 colours
Main Distributor for
PRIMA AXIOM

ARTIS smartstone DUROPAL
Euralite Range - 5 colours
2m - 50mm Square Edge
£29 or 2 for £50
3m - 50mm Square Edge
£49 or 2 for £90
Over 600 doors
CHOICE OF TYPES OF HANDLES

Quality Baths from \$99
Axia P Bath Inc. Panel & Screen Left & Right Hand 1700 Bath 3m White **\$279 \$99**
Axia 4 Piece Bathroom Set Basin & Pedestal 450mm Vanity White High Gloss Inc. Basin **\$99 \$89**
4m Curved Bath Screen Inc. Panel & Screen **\$59**
Mirrored Radiators **\$199**

Triple Wax Gun Connects to your hose **\$5.99**
HUGE NEW RANGE OF GARDEN FURNITURE & OUT DOOR PRODUCTS
SAVE 50% OR MORE

Swing Hammock \$229	Panama Coffee Set \$199	Santiago Wall Gazebo \$359	8 Piece Buffalo Style Table & Chairs with Parasol Was £249 \$199
Paddington Station Clocks 15cm face 28cm base \$5.99 \$8.50	Babylon Wicker Bench \$129	Motorized Sprayer 180x50x40cm \$5.99	Parasols All sizes from \$7.99-\$50 Various Sizes
15L Expandable Water Carrier \$5.49	CRV Gas Canisters 4 Pack \$4.99	Tent Accessory Set \$5.99	Quality Bar-B-Qs Various Sizes \$39-\$299
1L Aluminium Kettle \$3.99	Camping Mat 180x50x40cm \$3.99	Sleeping Bag Green or Blue \$7.99	
10L Collapsible Water Carrier \$2.65	Inflating Pillow \$2.59	Double Inflatable Camp Bed \$19.95	
Glow Sticks 99p	Emergency Poncho 99p	Tent Accessory Set \$5.99	
Beach Shelter with Ground Sheets & Pegs \$8.99			

7 Piece Black Glass Top Table & 4 chairs Was \$299 **\$199**
Harrogate Wall Gazebo **\$129**
Huge range of stoneware oven dishes, pasta dishes, serving platters, Britannia mugs & planters

01925 633 291 Fax: 01925 417 585
Public and Trade Welcome
FREE Survey 3D Walk Through Plans On the spot quotations
The Old Tannery Building, Manor Ind Estate, Lower Wash Lane, Warrington WA4 1PL
Off Grange Avenue, Latchford, Rear of ATS.
www.raddoncourt.com
OPEN 7 DAYS: Mon-Fri 9am-5.30pm Sat 9am-3.30pm Sun 10.30am-4.30pm
RADDON COURT Warrington WA4 1PL

ACH GARAGE SERVICES

Repairs • Servicing • Bodywork • MOTs

Diagnostics - Car and Light Commercial

Petrol and Diesel

MOT Work • Tyres and Exhausts

Collection and Delivery Service

Breakdown and Recovery Service



Tel: 01925 815152 Fax: 01925 815142

www.achgarage.co.uk Email: achservices123@btconnect.com

Unit 11AA Trident Business Park

Daten Avenue, Risley, Warrington WA3 6AX

Genesis Shoes



Look out for
**MID-SEASON
PROMOTIONS**
on selected summer stock
Starts Tuesday 3rd May

Tel: 01925 762463

60 Lodge Drive, Culcheth, Warrington WA3 4ER
www.genesisshoes.co.uk



Expert tuition in English & Maths

Primary
Secondary
GCSE
A-Level



Tel: 01925 733954

Email: info@coretuition.com

www.coretuition.com

Culcheth Paving & Groundwork

- Free No Obligation Quotes and Advice
- Permeable Paving Systems
- Tarmac
- Resin Bonded Surfacing
- Fencing/Decking/Gates Supplied and Fitted
- Specialist Patio/Driveway Restoration
- Garden and Land Clearances
- Tree Surgery
- Special Rates for OAP's
- No Job Too Small
- Fully Insured

We are a friendly, local and specialist service and all our work is guaranteed and finished to a highly professional standard

To arrange for a Free no obligation quote or for advice on your requirements

**Call Adrian: 01925 763642 M: 07725 510773 or
Scott: 01925 762337 M: 07903 626413**



Support and Recovery

Broken Marriages and Partnerships

A programme for anyone hurting from broken relationships

GriefShare

A programme for anyone who has lost a loved one through death

Every Monday 7.30-9.30pm
(except during school holidays)

Culcheth High School, Warrington Road, Culcheth

For more information contact Merrily on
07889 214671 or email merrilyfr@googlemail.com

Sponsored by Grace Fellowship Church



Health & Fitness Solutions

Sports Massage

Rachel Farrington

MICT, IIST & FHT Member

Do you have Aches & Pains? Then come and see me

Advanced Body Massage • Swedish Massage
Management of Injury • Chronic Injury
Back & Neck Tension • Deep Muscle Tissue

All walks of life treated

Park View Centre, 21 Common Lane, Culcheth, 01925 762404
www.parkviewcentre.co.uk



SCHOOL OF DANCE

A fun, friendly dance school with classes for all abilities and ages, from 2½ up to adults.

- We cover Tap, Ballet and Modern for the younger dancers.
- We have a teenagers street dance class.
- We have an adult class for those who love to dance and want to try a new way to keep fit!
- We do annual shows, exams and medal test sessions.

For more information please call **07939 614406**

or email: palmsschoolofdance@hotmail.co.uk

www.palmsschoolofdance.cosal.org.uk

Glazebury Methodist Church, near Culcheth

Take 20-30% off your household bills every month!

Shop with this unique Cashback card and you can save money on your household bills every time you buy!

- ✓ food and fuel at Sainsbury's
- ✓ clothing
- ✓ DIY
- ✓ health and beauty products
- ✓ household and electrical goods

at thousands of leading high street stores!

Simply top up the Cashback card with the amount of money you choose, then use it every time you go shopping! You'll receive Cashback on everything you spend at participating retailers!

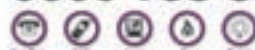
Spend £450 a month on your shopping? That's over 25% a month off a typical bill!



You need to activate exclusively to members of the Utility Warehouse Discount Club.

Call FREE on

0800 955 5247



SAVE OVER
£145 A YEAR
ON FOOD AND
FUEL ALONE!



Community event at church hall

THE first community event at Culcheth Methodist Church's community hall since the fitting of new blinds purchased with a £5,000 grant from Awards for All was a well attended get-together on Shrove Tuesday.

Meanwhile, the church's Friday night youth club is attracting up to 30 young people with a range of activities, including arts, crafts, sport, computer games and a tuck shop.

The club's youth leaders are funded by the Methodist Church, the CVW (Warrington Grassroots) grants programme, Faiths in Action, Warrington Extended Service,

Culcheth and Glazebury Parish Council and the Hamilton Davies Trust.

In addition to helping at the Friday night club, they go into local schools, other youth clubs including one at Rixton and go out meeting young people on housing estates and street corners.



The world of the private eye

AN insight into the world of the private investigator was given to members of Newchurch WI at their monthly meeting.

Guest speaker George Hughes told how after an apprenticeship in the building trade and service in the Grenadier Guards he answered an advert for "a driver."

This led to work as a private investigator and over the next 40 years or so he gained wide experience leading to his own agency.

He continues to serve court documents, trace witnesses and missing partners or spouses and give evidence in court if required.

Almost all work is commissioned by solicitors and investigators must keep within the law, he told members.

George told amusing stories of tracking down erring spouses and tailing suspects. But he had some serious frights as well!

Barbara Henderson had sent beautiful flowers for the table and the raffle and the evening's tea hostesses were Dorothy Fairhurst and Joan Hunt.

Diary dates included a Royal Exchange Theatre visit on May 25, a trip to Trentham Gardens on June 15 and a visit to Adlington on July 6 to see a beautiful private garden. The WI's own garden party will be on July 20 with Paddy Poulter as hostess. Irene Bromilow is also planning an outing to Roberts' Bakery on August 3 and an evening theatre trip next April to see "It's a Wonderful Town" at the Lowry.

The competition was won by Olive Lee, with Margaret Harrop and Jean Greig coming second and third. The next meeting is on May 11 at Newchurch Parish Hall.

New speed limits

NEW speed limits are to be introduced on the B5207 at Culcheth, if an order proposed by Warrington Borough Council, is approved.

A 30mph limit will be implemented on parts of Wilton Lane, Broseley Lane and Common Lane and a 50mph limit on Wilton Lane from the borough boundary to a point about 320 metres north west of Broseley Place.

Any representations about the proposal should be sent to the council's legal services department by May 19.

Inspector rejects extension plan

PLANS for a first floor extension to form a new master bedroom with en-suite at a house in Doeford Close, Culcheth has been rejected by a planning inspector.

The scheme, which involved building over an existing garage, was turned down by the borough council last year and went to appeal.

Now an independent inspector has backed the council's stance.

She said the extension would be in a highly visible location, causing a "considerable mass" encroaching into the gap with neighbouring houses and causing a sense of harmful enclose in the close.

The council had suggested an alternative solution but the appellant considered this to be impractical and inferior.

SPRING SALE

FANTASTIC DISCOUNTS & SPECIAL OFFERS IN STORE NOW!

FREE FITTING ON ALL CARPETS*

*When you purchase equivalent Zest underlay

PLUS EXTRA 20% OFF ALL STOCK

Need a new bed?

WE DELIVER FOR FREE

ASSEMBLE FOR FREE

GIVE YOU A NEW QUILT AND PILLOWS FREE

AND REMOVE YOUR OLD BED FOR FREE

PLUS 50% off ALL beds

PLUS many more offers in store

LOWTON CARPETS & HOME

THE AREA'S PREMIER INDEPENDENT SUPPLIER OF CARPETS, VINYLs, LAMINATE FLOORING, BEDS, KITCHEN WORKTOPS & CUPBOARD DOORS.

Call 01942 716769

Lowton Carpets & Home
35-37 Golborne Road, Lowton

War hero's grave desecrated

RESIDENTS of the Culcheth and Rixton areas have expressed outrage at the desecration of the grave of a local soldier killed in Afghanistan.

Police appealed for help from the public after thieves stole items from the grave of former Culcheth High School pupil Fusilier Simon Annis, at Hollins Green Cemetery.

Simon was killed in action in August 2009, together with a colleague. They had gone to the assistance of their commanding officer, who had been injured.

Simon, who had married only six months previously, was buried at Hollins Green with full military honours.

Thieves stole three large poppy wreaths, more than 20 miniature crosses and two large, mahogany crosses from his grave - leaving members of his family devastated.

Sergeant Lee Cooper said: "The items stolen are of little monetary value, but their sentimental worth is immeasurable. The family of Simon have been left devastated at this callous and insensitive act.

"The miniature crosses were inscribed with personal messages from

Simon's comrades, family and friends, and cannot be replaced."

Anyone with any information regarding this incident should contact Risley Neighbourhood Policing Team

on 0845 458 0000 quoting incident 492 10.04.11 or alternatively information can be left anonymously with Crimestoppers on 0800 555 111.



Simon and his bride on their wedding day

Cricketers expect tougher opposition

GLAZEBURY Cricket Club makes its debut in the first division of the Cheshire Cricket Alliance on Saturday April 23 - with the prospect of facing much tougher opposition than last year.

It's the first time the Hurst Lane club has played in the league's top tier and the first game will be at home against Old Parkonians - newly demoted from the Meller Braggins League.

Last summer, Glazebury enjoyed one of their best-ever seasons, winning promotion by virtue of coming runners-up in division two of the Alliance. They had led the chase for most of the year and would have been crowned champions if they had won their last game. In fact, they lost by nine runs in atrocious conditions with rain pouring down throughout most of the Glazebury innings. But overall it was a superb season for the village side who won 13 games and were never beaten at home.

First XI skipper this summer is Andrew Calvert.

The 2nd XI will continue in division three, where they finished in a mid-table position last year. Their first game, also on April 23, will be at Eastham and Bromborough.

Skipper is Chris Lord, while 3rd XI captain is Gordon Chesworth.

Under 15s captain is Gerard Southworth, Under 13s captain is Tom Hunt while the Under 11s are led by Ed Parry.

Council campaign will be 'good for business'

A SENIOR Culcheth councillor has moved swiftly to give an assurance that the parish council's proposed 'Look of the Parish' campaign is not intended to prevent traders from promoting their businesses.

Cllr Keith Bland says the parish council merely wants to improve the appearance of the village centre - it has no intention of doing anything to stifle business.

Some concerns were expressed by traders after last month's Culcheth Life reported that the council's environment sub-committee was considering a campaign to remove unsightly banners and A-boards from the shopping area.

Cllr Bland, chairman of the committee, said: "We have received some complaints from members of the public so we have decided to look at the issue.

"But we are not going to be heavy handed. There is no question of a ban on banners and A-boards.

"What we will probably do is write to businesses and other organisations asking them to co-operate with the campaign.

"It is not just banners and A-boards, there is also redundant street furniture - signs that are no longer needed, posts which no longer have signs on them, etc. We are well aware of the need for businesses to promote themselves.

"Most banners and A-boards are quite acceptable. But a few cause obstructions, or even road safety hazards, or are unsightly.

"With a little care, the appearance of the village can be improved. Most people have a bit of pride in the appearance of the village and we just want to encourage this. There is no question of us doing anything to damage local business - that is the last thing we want to do. In fact, we think tidying up the appearance of the village will be good for business."

First council homes for 20 years

THE first council houses built in Warrington for more than 20 years have been officially opened the Mayor and Mayoress, Cllr and Mrs John Joyce - in Culcheth.

The three two-bed bungalows were built by Bullock Construction on Charnock Road and funded by Warrington Borough Council and the Homes and Community Agency. They will help meet a shortfall of affordable homes in the area.

Similar bungalows will be built on seven other sites across the borough.

Peter Taylor, assistant director for regeneration, housing and development at the borough council said: "It's excellent to see local people being able to downsize to brand new properties in the community and even the street where they have lived for many years. This is also helping to free up larger houses for families to live in and we feel it is a great use of the limited funds we have available to build new homes."

Golden Gates Housing Trust will manage the new homes on behalf of the council and will eventually own the properties when all the new bungalows have been built, retaining them as affordable homes in the future.

THE NEW MEDIA CENTRE
OLD ROAD, WARRINGTON WA4 1AT
01925 240247
info@247print.net

twentyfour
seven
design & print ltd

10,000
A5
FULL COLOUR
£248.00
PAY FOR 1 SIDE
GET THE OTHER
SIDE PRINTED
FREE

500
FULL COLOUR
Digital Business Cards
(Buy 1 set, get 1 set free)
£35.00

100
A3
£38.00
FULL
COLOUR
POSTERS

60"X40"
FULL COLOUR POSTERS
ONLY **£12.00 EACH**

*ALL PRICES ARE SUBJECT TO VAT

CLASSIFIED

Advertising: 0800 955 5247

BATHROOMS

The Bathroom Refurbishment Co.
We can create the Bathroom of your dreams
One Warrington based Company
One Job from start to finish
Unique 3D virtual CAD design system
Please visit our website
www.bathroomrefurbishment.co.uk
Please Ring Wayne
01925 826 828 or 07976 574 828

CARPET CLEANING

A1 STAINBUSTERS: Fully guaranteed carpet and upholstery deep dry cleaning. Clean and dry in only ONE hour. Quotes for both commercial and domestic. Contact the Local expert **John Latham FREE on 0800 137772 or call 07765 31480**

SAFELEAN: SAFE ORGANIC CLEANING. Specialists in cleaning all leather and fabric upholstery, rugs, carpets and curtains in situ. Ask about our new organic allergy relief system, Guardsman stain protection plans and carpet repairs. **Call Carey Randall on 01925 815724**

SIMPLY THE BEST CARPET CLEAN YOU WILL EVER have. Cleaners UK Ltd. Est 23 yrs. Have your carpets & sofas beautifully deep cleaned leaving them fresh smelling & colour restored. Latest & best methods. Dry/steam. Professional, reliable & affordable. **Call Neil Riley on 01925 264989/07831 336060** For more information www.cleaners-uk.net

CHIROPODY

KATHRYN GRACE AND ASSOCIATES, D.Pod.M, M.Ch.S., HPC registered Chiropractors/Podiatrists, 25 years experience, offering friendly and professional footcare, also Gait Analysis. Care home contracts are welcome. Culcheth based. **Tel 01925 762404** www.parkviewcentre.co.uk

CLEANING SERVICES

arleys angels
• Spring Clean Specialists
• Presenting your home for sale
• Moving house
• After building work cleans
01925 266834
because you're worth it!

ULTRA CLEAN UPVC CLEANING SPECIALISTS. Cleaning using telescopic pole technology. Conservatory roofs, guttering, soffits and fascias, dormer, cladding and bargeboards. Regular, seasonal or one-off cleans. **Call Dave for a free quotation and advice on 01942 679797 or mob 07876 684 662**

CLIMATE CONTROL

CLIMATE CONTROL BY WARRINGTON based 4 Seasons, for offices, shops, surgeries, schools, homes and conservatories like yours! Installed in a day guaranteed 5 years. Keeping you cool when it's hot and warm when it's not. **www.4sac.co.uk 01925 756620**

COMPUTERS

AED COMPUTER SERVICES. For all your PC servicing requirements including: Hardware repairs /upgrades, Software / Operating System re-installs, Virus removal, basic training. **Tel: 01925 766426, mobile: 07870 260657, email: enquiries@aeds.com, Web: http://www.aed-cs.com**

COUNSELLING

CONSIDERATE COUNSELLING and Hypnotherapy Service has qualified therapists who offer sessions in a safe, secure and confidential environment, phone **0161 776 9961** or email susan.eatonval@yahoo.co.uk

DELIVERY SERVICES

FURNITURE FERRY LIGHT REMOVALS. Collections arranged from Ikea, Costco and other stores, garden centres, auctions etc. You choose, you buy, I deliver - SIMPLE. Reliable, inexpensive service. **Tel: Matt 07970 178 333 or 01942 732768. www.furnitureferry.co.uk**

TnM Couriers - specialists in urgent UK same day deliveries, international and UK next day services available, contract work undertaken, parcels to pallets, no job too small or too big, competitive rates. **Call 01925 639029.**

DRIVING TUITION

MIKE PARKER ADI
• Driving • Theory Tuition
• Patient • Friendly • Reliable.
• Pass Plus • Gift Vouchers
01925 767277 or 07791 622475

ELECTRICAL CONTRACTORS

PAUL LEWIS ELECTRICAL SERVICES. For extra sockets/lights, main board upgrades to full rewires, no job too large or small. No call out fee. All work guaranteed. **Tel 01925 758337 or 07966 386806.** Est 24 years.

EVERGREEN ELECTRICAL CONTRACTING. NICEIC approved contractor. For lights and sockets to rewires, fuse-box upgrades. Qualified electrician. All work is to the latest IEE wiring regulations. No job too small. Most major credit and debit cards accepted. **Tel: David on 01925 724219 / 07971 407022.**

FIRES & FIRE SURROUNDS

Quality Fireplaces at Affordable Prices
WARRINGTON FIRE SURROUNDS
Surround & Marble Only £299
Quality Value Service Guaranteed
01925 417731
www.warrington-fires.co.uk
8 Lovely Lane, Warrington
(follow signs for hospital)

GARDENING SERVICES

LAWN DRAINAGE AND SOIL AERATION. No trenches, no drainpipes, no digging, no repairs, no hassle. If this interests you **Contact Bob Harper 01925 266852 or 07952 608701.**

M J NEEDHAM LANDSCAPES Award winning with over 15 years experience. All aspects of landscaping, specialist in bespoke construction. Qualified design service available. **Contact 01925 825 645 or 07888 730 383**

GATES

Village Gates
SPECIAL OFFERS NOW ON
Manufacturers and installers of quality timber gates.
villagegates.co.uk
01925 766629 or Mob 07588 457145
Cherrywood Road, Culcheth WA3 3SR

GROUNDWORK

BIG DIG Groundworks
Flagging, Block Paving, Garden walls, Fencing, Patios, Drives, Foundations. For free estimates call Mob: 07934 563 266 or Tel: 0153 424 5462
www.bigdiggroundworks.co.uk

GUTTERING

A & E SERVICES. New gutters from £15 per Metre, Black white or brown. No Joints, No leaks. Repairs from £35. **Call 01942 740517 or 07833 685134.**

HANDYMAN

Handyman Services
Home, Office & Garden
Gutter Cleaning, Repairs & Replacement
Welding Repairs & Fabrication
Fascias, Soffits & Windows
Patio & Driveway Cleaning
All Garden Work, Flagging, Fencing & Turfing
Interior & Exterior Painting
Plumbing & General DIY
You Name It - No Job Too Small!
Tel Neil: 01925 757905
Mob: 07813 201850
handymanserviceslymm@hotmail.co.uk

LOCAL HANDYMAN for all those jobs you cannot get anyone to do. House maintenance, flat pack assembly, fence repairs etc. No job too small. **Phone Peter on 01925 762 645 or 07523 419 216.**

HEALTH

CL JONES LCSP (PHYS). Remedial massage and clinical hypnotherapist. Now back above Sainsbury's. **30 Sundial House, Common Lane, Culcheth. WA3 4EH. Call 07845 473467 day 01925 767979 eve.**

HOME IMPROVEMENTS

CLASSICAL designs est. 1990
Fitted Bedrooms, Kitchens
Sliding Doors & Studios
Designed, made and fitted by us
Free design and quotation
Tel: 01942 673556
261 Newton Road, Lowton
(opposite The Red Lion Pub)

IRONING SERVICES

Carol's Ironing services
NEXT DAY PICKUP & DELIVERY SERVICE
CPS Centre (Above Sainsbury's)
Tel: 01925 767945
Mob: 07979 948197

PAINTING AND DECORATING

LOCAL PROFESSIONAL PAINTER and decorator. Domestic and commercial work, competitive prices, free quotes and advice. NVQ and City and Guilds qualified. **Call Micheal Caldwell to discuss. 01942 682735 or 07908 089760.**

PAYROLL

WHY TRY TO BE A PAYE EXPERT? Watkinson Black can provide a cost effective payroll service, releasing you to concentrate on your business. **For further details please phone: 01925 413210 or e-mail: info@warringtonaccountants.co.uk**

SITUATIONS VACANT

GARDENER REQUIRED - seasonal hours max 2 days per week, would suit active retiree. **Laskey Farm, Thelwall. 07785-262478.**

To Let

FULLY MANAGED CONSULTATION ROOMS including reception cover for rent at a busy practice in Culcheth. **From £5.50 p/h. Ring for details 01925 766666**

TUITION

SPANISH LESSONS IN CULCETH Daytime tuition in Spanish grammar for adults - beginners or revision. Experienced retired tutor; friendly relaxed lessons for singles or couples. **Tel 01925 765 962 or Mob 07922 155 275**

TREE SURGERY

R&R TREE SERVICES Local business. Trees felled and pruned, hedges cut and shaped, conifers a speciality, turfing and fencing, all waste removed. Licenced and insured. **Contact Robert on: 01942 673736 or 07811 954 065**

WINDOWS & GLAZING

LEIGH GLASS LTD FOR ALL OF YOUR GLASS requirements please contact **Tel 01942 678440 Fax 01942 261728 email leighglass@hotmail.co.uk**

SJ HESKETH WINDOWS. Failed and misted double glazed units replaced. UPVC windows and conservatories. Soffits, fascias and guttering. All aspects of building work. Fensa Reg 18048. No job too small. Ask for Steve. **Tel 01942 523538. Mobile 07767 828363.**

SP GLAZING for all your glazing requirements, double glazed units including failed and misted units, broke windows, mirror fixing. Kite marked to B/S. Time served glazier with over 30 years experience. **For a friendly no obligation quote tel Sam Pendlebury on 01942 671859. Mob 07919 660296.**

The UK's best value Home Phone service

- ✓ The UK's cheapest line rental
- ✓ Unlimited free calls to UK and international numbers
- ✓ Unlimited free calls to other Club members
- ✓ UK landline calls up to 90% cheaper than BT

GUARANTEED SAVINGS COMPARED TO BT

SAVINGS THAT REALLY ADD UP!

For full details contact: 0800 955 5247
New Media Centre, Old Road, Warrington WA4 1AZ

THE UTILITY WAREHOUSE



The
Raj
Indian Cuisine
est 1998

**NEWLY REFURBISHED
RESTAURANT**

20% Discount on Food before 7pm
(Advanced Bookings Only)

Sensational Sunday Banquet only £10.95

Popadom, Any Starter, Any Main Meal, Vegetable Side Dish (between 2 persons), Rice or Naan
(Excluding King Prawn, Main Meal up to the value of £9.95)

Party Bookings

Outside catering available, free hotplate hire for parties
minimum of 20 persons - Please call for details

**Environmental Health Scores On The Doors
Awarded 4 Stars!**



Friendly Indian Restaurant, Serving Culcheth for 13 Years

36 Common Lane, Culcheth WA3 4HA Tel: 01925 765551

