

Culcheth *Life*

FREE EVERY MONTH

No. 74

May 2009

Dootsons
Family Law Specialists

See main ad
Page 10

23 Jackson Avenue
Culcheth
0845 330 5700

CULCHETH • CROFT • GLAZEBURY • GLAZEBROOK • LOWTON • WINWICK AND SURROUNDING AREAS

Amy is new Rose Queen

Page 4

BibA
Boutique
15% OFF
On production of this advert
Valid until end of May
01925 757 508
Heathay Mere, Chaise Meadow,
Lymm, Cheshire

ZOOM!
A brighter, whiter smile in under an hour.

1100 to Surgery Teeth Whitening & More X1
or 1270 to Surgery Teeth Whitening alone
or 1100 Home Work Whitening Kit alone.
Also available in form of NHS treatments.

Specialist cosmetic dental treatment.
Free Home Visit Service. Booked 9am to 5pm.
Tel: 01565 854655

All the latest news: www.warrington-worldwide.co.uk

Editor
Gary Skentelbery

Production
Paul Walker

Advertising
Freephone
0800 955 5247

Editorial
01925 623630

Email
info@culchethlife.com

Websites
www.culchethlife.com
www.frodshamlife.co.uk
www.lymmmlife.co.uk
www.warrington-
worldwide.co.uk
www.warrington.tv

Address
New Media Centre
Old Road Warrington
WA4 1AT

*Culcheth Life is published
monthly by Orbit News Ltd.*

*The contents of this magazine
are fully protected by copyright
and nothing may be reprinted
or reproduced without prior
permission of the publishers.*

*The publishers are not liable for
any statement made or opinion
expressed by third parties in this
publication.*

Printed by TwentyFourSeven

Editor's Comment



ANYONE worried that construction of an incinerator on the Omega development site could result in 'fall out' affecting the Culcheth area should be sleeping easier in their bed.

Not so much because of the assurance given by Warrington's strategic director for environment and regeneration, Andy Farrall, at a meeting of Culcheth and Glazebury Parish Council, that there is no plan for an incinerator at Omega. He did, after all, also say the borough council would be looking for a site for an incinerator and that it could still be Omega.

It is what he did NOT say that gives us more confidence. He did not say there had NEVER been a plan for an incinerator at Omega.

Culcheth Life has had sight of documents which show that while there may never have been any formal plan, there was undoubtedly a willingness on the part of the borough council to locate the incinerator at Omega.

Barn dance

A BARN Dance is being held at Moss Side Farm, Rixton on May 16 to raise money for the Christie Hospital and the North West Air Ambulance.

Traditional band the Leg Plaiters will provide the music and there will also be a hog roast supper.

Details are available from Bettina on 01925 814853 or Mark on 01925 650931 or by email from markgoucher07@aol.co.uk

These documents, obtained through an application under the Freedom of Information Act, show the borough was happy to place its new "waste management facilities" at Omega if the North West Development Agency would finance the road infrastructure necessary to open up the site.

Subsequently, the documents reveal, the Agency indicated it was not able to do this - and so the Omega 'plan' died.

Probably not to be resurrected.

There remains the issue of what alternative site can be found because, as Mr Farrall indicated, the borough is still committed to an incinerator.

We are told modern incinerators are so clean there are no emissions anyway, so perhaps the location is irrelevant in terms of fall-out. But we have heard talk of "clean" technology before and are still to be convinced that the old saying "no smoke without fire" is not just as appropriate when said in reverse.

Now Stock Full Range Of:

- Horse Feed & Supplements
- Dog & Cat Food, Treats & Accessories
- Flea/Worm Treatments
- Delivery Service Available

'If we don't stock it, we can get it'

Tel: 01942 671215 Fax: 01942 670406
Graveoak, East Lancs Road, Leigh, Lancashire, WN7 3SE



Opening Times:

8am - 7pm
Mon, Tues,
Thurs & Fri

9am - 5.30pm
Wed, Sat & Sun

TaylorBusinessPark.com



business PREMISES
TO LET WARRINGTON



Contact: Paul Taylor or Paul Fairclough
Tel: 01925 762851 Fax: 01925 762805
Email: info@taylorbusinesspark.com

Xross interiors

is the cross lymm cheshire was dnu

01925 758298

www.crossinteriors.co.uk
info@crossinteriors.co.uk

curtains

blinds

carpets



vinyls

poles and tracks

giftware

design consultation

Incinerator 'fall out' fears allayed

FEARS that Culcheth and Glazebury could suffer 'fall out' from an incinerator to be built on the giant Omega development site have been allayed.

No plans exist for an incinerator at Omega – and no decision has been made on where one might be built.

These assurances have been given by Andy Farrall, the borough council's strategic director for environment and regeneration, at a meeting of Culcheth and Glazebury Parish Council

Even when an incinerator is built, it will be small and highly efficient,

producing no emissions. It will deal with locally produced waste only.

Mr Farrall attended the meeting in response to fears that an incinerator was to be built at Omega and that its "fall out" would have a local impact.

He gave an assurance that no decision had been taken on the location of the incinerator.

Reports that it would be at Omega were "pure speculation" he said.

"We haven't even started to look for sites yet. There are a number in the borough and Omega could be one of them. We will be looking at various locations and there will be consultation before any decision is made."

Mr Farrall said the borough council still wanted a high class, international business development at Omega.

But in the current economic climate, the original scheme was not really viable. It was now likely to be a mixed-use site, possibly including housing, and it was likely to be a couple of years before anything happened.

Mr Farrall said the incinerator Warrington would build would be modest in size, affordable and would

deal with locally produced waste only. This would end up as ash which would be "good useable stuff."

Over the next 6-12 months the council would be looking for a location. The plant would produce either electricity to be fed into the national grid or heat which would be used to heat buildings such as hospitals, schools or even homes.

Coun Keith Bland said he had seen a modern incinerator which was monitored by the Environment Agency and which produced no emissions at all.

If it did, it would immediately be shut down for six months for the problem to be rectified.

Pub reveals its hidden gem

GLAZEBURY'S Chat Moss Hotel has revealed its hidden gem – the spacious beer garden at the rear, which many people didn't even know was there.

Mine host Dave Warhurst has ambitious plans for the garden this summer.

He'll be running regular barbecues, giving customers the opportunity to eat in the open air rather than in the

restaurant if they wish.

He has installed new play equipment and restored some of the old to make the garden more family friendly. Parents will be able to enjoy a drink or a meal while at the same time keeping an eye on their youngsters as they play in a safe environment.

Even restaurant customers will have good views of the garden, which slopes down to give good views across the River Glaze.

There is a mini football field, with netted goals, to keep young soccer enthusiasts happy. And the garden will be available for special events such as the Glazebury Cricket Club Fun Day – one of the biggest events in the village's calendar

Inside, the pub now has popular quiz nights every Tuesday and karaoke every other Saturday.




Croft Riding Centre

- Riding School Group/Private Lessons
- Novice/Advanced Riders
- Pony Club Centre

Learn to Ride & Keep Fit in our 2 Indoor Arenas / Outdoor Arena & Country Course

Spring Lane, Croft, Warrington, WA3 7AS Tel: 01925 763715

www.crofttridingcentre.co.uk

CHAT MOSS HOTEL

- Newly Refurbished Beer Garden • BBQs Throughout the Summer •
- Bed and Breakfast Available • New Head Chef • New Changed Menu • SKY Sports
- Wide range of traditional and guest ales



207 Warrington Rd, Glazebury, Warrington **01925 762128**

New queens selected



AN 11-year-old girl has been selected as Newchurch Parish Church Rose Queen.

Amy Kadodwala (pictured right), a pupil at Bolton Girls' School, will be crowned at a ceremony in church on Sunday, May 17.

There will also be a procession through the village, accompanied by Golborne Band.

Amy was one of the queen's attendants last year and first took part in the ceremony five years ago.

She is very interested in music, plays the flute and is an enthusiastic member of the 1st Culcheth Guides.

Her attendants will be Charlotte Morris, Courtney Williamson and Emily and Molly Hogarth.

During the coming year, Amy will represent Newchurch at events such as Croft and Glazebury carnivals and the annual Christmas Tree festival.

Meanwhile pictured proudly Showing off their sashes and trophies are from left, the new Croft Carnival Queen elect Hannah Alberta aged 12, Carnival Princess Paige Whittaker aged 10 and Carnival Rosebud Charlotte Bate aged 4.

The Carnival takes place on Saturday July 4th and the annual scarecrow competition will have a Hollywood theme to mark American Independence Day.

The parade will leave the plough at 12 noon prompt.



New members sought

CULCHETH Probus Club – the organisation for retired professionals or business men – is looking for new members.

The club meets every second and fourth Wednesday of the month in the morning at Culcheth Sports and Social Club in Charnock Road.

Interesting talks are given by visiting speakers or members and the club also organises social outings and visits.

In May and June, talks are planned entitled 'Schoolhouses in the Clouds – Edmund Hilary's idea to teach Sherpa children' and 'The rehabilitation of Orangutan and bears in East Borneo'.

Potential members are invited to attend as visitors to see for themselves before joining. Details are available on 01925 762438.

An American in Culcheth

RINA Tillenger – an American married to an Englishman – was guest speaker at Culcheth WI's monthly meeting.


"Yankee Doodles" was an amusing talk based on her experiences after living in this country for 22 years, covering the problems and faux pas arising from the subtle differences in language, manners and humour of the two countries.

She shared some thoughts about the stereotyping of the characters of both Americans and British people. She talked of things she missed from America when she first came and of the things she loves about Britain. After her talk she

displayed fabric pictures and cards she had created.

She was thanked by Ann Hambleton. President Pat Forrest reminded members about outings that are planned - Blackpool on May 27 to see "Dinner Ladies", Stoneyford Cottage on June 29 and a Staffordshire day out on July 21.


The resolution for the NFWI annual meeting this year seeks additional funding for research into the plight of honey bees that are declining at an alarming rate and whose loss as pollinators would have catastrophic effects on food production.



Classic Home Improvements

Established 1987

Fireplaces – Kitchens – Bathrooms – Stoves – Tiles





Family run business established 21 years.

Free Kitchen & Bathroom design service

All Installations project managed

Kitchen Renovation -Worktops & Door.

Working Bathrooms & Showers on display in our Warrington showroom.





Upto 50% of Bathrooms

Bespoke Designs

Over 70 Displays

25 Working Gas, Solid Fuel & Wood Burning Fireplaces



Upto 50% of Fireplaces

61—67 Knutsford Rd,
Warrington
Cheshire,
WA4 1AB

Tel : 01925 445455

FREE Granite Worktops with any fitted Kitchen or Bathroom during APRIL & MAY

Pupils treat pensioners

GLAZEBURY C of E Primary School invited local pensioners and school governors to join them for lunch.

Pictured from left: Ann Jones, Alex Henderson-Sayers, Lydia Kelly, Natasha Hampson, Joan Patrick, Luke Allsup and Pam Williams.



Moving the nostalgia one mile away

CULCHETH'S traditional Victorian Sweet Shop is on the move - just a mile down the road to Glazebury.

Proprietor Pauline Gilroy explained: "I have always wanted to have a tearoom, with all the Victorian trimmings, and class, and the bone china teapots, and cream teas etc

New

"So the dream is finally coming true, but sadly we are leaving Culcheth. However, we're only going to Glazebury! The new shop is next door but one to Glazebury School and has parking for a few vehicles. The sweet counter will be on one side of the shop and the tearoom on the other."

All the fixtures and fittings now in Culcheth will be relocated to the new shop. With a few more tables and chairs and great service (cream teas from ONLY £2.99 per person), Pauline thinks everyone will be most impressed.

Successful

"Some of my lovely recycled teenagers (pensioners) won't be able to get to me I know, but I am more than happy to deliver whatever sweeties they require to their door. I don't want to lose any of you! I hope you will all come and visit the new shop, old and new customers. I am grateful for all your support, without you I wouldn't have been as successful as I have been in Culcheth."

***Opening*
Saturday
2nd May**



FREE
Filter Coffee or Tea
With Every Piece Of Cake
FREE Lollipop For The Children
Bought On The Opening Day

WE ARE MOVING

To 90a Warrington Road, Glazebury, WA3 5NH
RE-OPENING introducing our NEW TEA ROOM

Serving
Afternoon Tea
Coffee
Cakes & Biscuits

Jams
Marmalades
Preserves
Many Varieties of Sweets

Tel: 01925 763827

Fax: 01925 765067

Visit our Newly Refurbished Furniture Showroom

and take advantage of some
great offers

throughout the store on Carpets, Beds and Furniture

We pride ourselves on providing customers with the highest quality products at affordable prices.

Our expansive showroom has famous brands in furniture, floorings, beds and occasionals.

A passion for excellence, ensures that a visit to our showroom is an enjoyable experience.



FREE delivery within local areas and our knowledgeable service makes us the Smart choice!



Chapel Lane
Stockton Heath
Warrington WA4 6LL

01925 267518

Cheshire Catering

"Quality Outside Catering Specialist"

We Offer:

- A wide range of finger buffets to formal buffets
- Office buffet deliveries - children's party packages
- From BBQs to full sportsmans dinners

We will travel to outside venues

We won't be beaten on our first class service

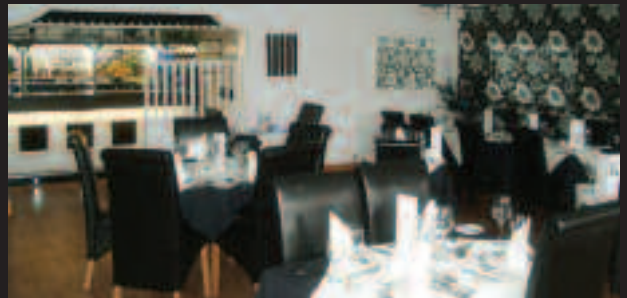
2008 Menu Prices Held!

For details call

01925 765773

Elegance

Exclusive fine dine restaurant now open



Full A La Carte Menu

Choice of Set Menu's - *changed weekly*
3 Courses £19.50 - *no hidden extras*

Open Thurs - Sat 6pm - Midnight
(*last orders 10pm*) - Sun 6pm - 9pm

"Launch Of New Wine Menu"

including a connoisseur collection.

Thursday, Friday and Sunday diners receive a complimentary bottle of wine when selecting from set menu A or B.

(Adults only)

Tel: 01925 768 889 Church Lane, Culcheth

The Harrow



**Quality Home Cooked Food
Served All Day - 7 Days A Week**

Monday - Wednesday 12 - 8pm

Thursday - Saturday 12 - 8.30pm

Sunday 12 - 6pm

Pensioner Lunches & Tea Time Specials
Two Main Courses Just £10

BBQ

Bank Holiday Monday, 4th May
1pm - 4pm

Tel: 01925 764 800 Church Lane, Culcheth

The Village Club

Culcheth British Legion - Under New Management
with Cheshire Catering



LADIES NIGHT - Friday, May 15th

IVY LEAGUE - Saturday, May 30th

FREE Function Room Hire*

Available for Christenings, Weddings,
Funerals & Birthday Parties.

A fantastic venue for children's parties of all ages.

* Free room hire when booking catering service

Club Memberships Now Available
Just £15 A Year!

Tel: 01925 763 562 Wigshaw Lane, Culcheth

More women go private for cervical screens

AN increase in women seeking private advice on their gynaecological well-being is reported by Spire Cheshire Hospital.

The hospital is hosting a free Women's Health information evening on Tuesday May 12 at 7.30pm, when advice and information will be available from consultant gynaecologists.

Places can be booked by calling the hospital on 01925 215029 or by email to cservice-ch@spirehealthcare.com

The hospital reports that women are seeking more private cervical screens than ever before. Results are obtained within five days - so reducing anxiety and allowing

women to take control of their health.

Spire Healthcare director of clinical services Dr JJ de Gorter said: "The proportion of women aged 25 to 30 having NHS cervical screening has fallen in recent years from 80 per cent in 1995 to 70 per cent in 2005/6.

"However, such screening is extremely important and it is encouraging to see more women actively seeking private testing and being responsible for their gynaecological well-being. Though abnormalities are rare, treatment outcomes are better the earlier they are detected."

Missing rope mystery

HELP is needed to solve the mystery of a missing rope in Culcheth.

Organisers of Culcheth Community Day were hoping to use a special tug of war for a competition between local pubs.

But the rope - last used at an event in Croft in September, had vanished and nobody could

remember where it was.

Anyone who can help locate it should contact Coun Peter Caswell on 01942 671938.

A tug of war rope should be made of jute or sisal, rather than a plastic fibre which can cause burns, with a diameter over 30mm and length of more than 20 metres.



REGENT COSMETIC
DENTAL PRACTICE

NHS

We have NHS places available

We also offer Private and Preventive Treatments

- We welcome all patients new and old, NHS (including exempt patients) and private to Regent Cosmetic Dental Practice.
- Our principles remain preventative, healthy foundation and offering choices of restoration where necessary.
- We have grown to three dentists, a dental therapist and a hygienist. Also joining the practice soon are the podiatrist, physiotherapist and orthodontist (braces).
- We also have an on site beauty therapist.
- Specialist practitioners are available for root canal and periodontal (gum disease) treatments.

Treatments available:

• In surgery & home bleaching	• Sedation for anxious patients.
• White fillings, veneers & porcelain inlays.	• Hygienist services on site.
• Implants placed & restored.	• Many types of crowns/bridgework.
• Fingeline removal.	

Regent Cosmetic Dental Practice, Malt House,
Malt Street, Knutsford WA18 6ES
Tel: 01565 654555



Women's Health

Free Information Evening on

Tuesday 12 May 7.30pm

Presentations will be given by our Consultant Gynaecologists on

- Cervical cancer vaccine (Gardasil)
- A new treatment for heavy periods (Novasure ablation)
- Cervical cancer screening
- Incontinence
- Prolapse

Our Consultant Gynaecologists will talk about treatments available and there will be an opportunity for your questions to be answered. Light refreshments will be served from 7pm.

To reserve your free place(s) simply call

01925 215 029 or email

cservice-ch@spirehealthcare.com
www.spirehealthcare.com/cheshire



Spire
Cheshire Hospital

Looking after you

MILLINGTON LIVERY YARD

Now Under New Ownership & Management

Entrance: Booth Bank Lane, off Reddy Lane, Millington



Outdoor wooden stables



All-weather flood lit ménage



Over 20 acres of post and rail paddocks



Specialist on-site horse walker

The ultimate equine experience!

FULL & PART LIVERY AVAILABLE

Also with great hacking around the Cheshire countryside.
Imminent BHS approval.

Come and see our outstanding facilities for yourselves on our exclusive opening days on **2nd and 3rd May between 10am to 5pm**. If you wish to bring your horse, please contact us in advance as limited places are available.

For further information as to full livery or more details as to the open days, please contact **Jim on 01925 752 850 or 07718 584 208**

Ivy House Farm

TO RENT



Contact: 01925 752 850 or 07718 584 208

18th century Cheshire farmhouse

- 4 bedrooms all en suite
- Wealth of character-beams
- Open fire places
- Set in 30 acres of Cheshire farmland
- 3 stables with tack room
- Garaging for several vehicles
- Use of livery yard facilities
- Woodland canter track

The advantage of close links to M6 motorway (J20, 5min), M56 (5min) and Manchester airport (10min)
£2500 per calender month.

Boost for baby care unit

CULCHETH business couple Mark and Karen Thornton are giving a welcome boost to the Special Care Baby Unit at Warrington Hospital.

They are donating prizes for the Neonatal Unit's Fun Day to be held on May 10 — and also donating 10 per cent of sales they make at their stall at the event at Callands Primary School.

Mark and Karen run the New Arrivals baby and children's wear shop at the CPS Centre above

Sainsbury's.

Said Mark: "Staff at the Special Care Baby Unit undertake a challenging role and parents and families are grateful for the work they

do.

"We want to show our support for the work they do."

Mark and Karen will attend the event to personally present the donations.

Events include professional face painting, bouncy castle, raffle,

tombola, beat the goalie and lots of other fun and games.

All proceeds from the events will go to the SCBU.

Visitors to the New Arrivals stall will be given a discount voucher to be used on purchases made directly at the shop.

Mark added: "We hope local people will go along and support this event."



Taking on Chess masters!

Members of the Culcheth Primary School Chess team recently competed in a competition taking on students from Leigh College.

While they didn't win the youngsters put up a spirited performance.

Team members pictured from left, are Cameron aged 9, Tom aged 10, Isaiah aged 10, Jodie aged 9 and Alex aged 10.

FA Cup family fun day

CULCHETH Athletic Junior Football Club are holding their first ever FA Cup Family Fun Day at the Royal British Legion on Saturday May 30.

It's free to get in and the doors will open at 12 noon and events include: face painting, children's entertainer, lads and dads keep the ball up competition, penalty shoot out, roll a pound and win a mountain bike, fantastic prizes to win in the raffle, food available all day (very reasonably priced).

The big game will be on large screen — who will win Everton or Chelsea? Plus loads more.

Any money made on the day will go towards club funds and in addition they will be making a donation to a worthwhile charity.

Evening entertainment will include the genuine 1960 comedy/ vocal band 'The Ivy League'.

Tickets on sale at £7.50 each and includes buffet.

Contact the Legion direct on 01925 763562 to purchase tickets and for more information.

Fundraiser

CULCHETH British Legion and Forget me Knot Book Shop are raising funds for parenting charity NCT on Tuesday May 19 - 10.00 a.m. - 12 Noon.

Admission to the event at the Legion costs £1.00 per adult or child (all entrance money to go to NCT) and includes juice, tea, coffee and biscuits donated by British Legion.

Entertainment will be by Jabberjacks. There will be a Hook a duck stall with prizes donated by Forget me Knot book shop.

There will be a raffle stall with prizes donated by local businesses.

Everyone welcome.

Silence please!

A NEW 'quiet area' has been created at Culcheth Primary School allowing pupils to take time out and relax.

Pictured testing out the new facility are from left, Zachery aged 11, Jonathan aged 11 and Tom aged 10 enjoying a bit of quiet time in the new school courtyard.



ASHBERRY HEALTHCARE LTD HEATHERCROFT CARE HOME

ASHBERRY HOUSE

A new, purpose built 24 bed extension to the existing home

Heathercroft Care Home has extended its range of services. This well known, and highly respected local nursing home, has now completed a purpose built extension. On two floors, this unit offers accommodation for 24 service users, who require EMI residential care. Having been built to the highest standard, the unit will combine excellence in residential care within a new facility.

All rooms and communal spaces exceed minimum standards. All rooms have phone and TV points, are light and airy and furnished in a bright modern style. Each floor has large lounge dining rooms with Plasma TV. Call systems are installed in all rooms and communal areas. The unit has keypad entry and exit, offering additional safety for our residents. A13 person lift provides access to the second floor. Heathercroft can now offer placements for private residents needing EMI residential care.

Ashberry House can offer six places for privately funded residents who require EMI residential care. Please contact us to make an appointment, if you wish to look around the new unit or to obtain current fee rates.



Tracey Perry, RGN Registered Manager
Heathercroft Care Home | Longbarn Lane | Woolston | Warrington | Tel: 01925 813330

DOOTSONS LLP

Residential Property

Whether you are a first time buyer, a property developer, a new investor or simply buying or selling the family home we can help.

You can be confident that with the technology we have and enthusiastic and motivated staff we will take the hassle out of buying or selling property.

We offer competitive fixed prices with NO hidden extras.

We deal with the following types of property transactions:

Sales	Shared Ownership
Purchases	Probate Transfers
Re-Mortgage	Adverse Possession
Right to buy	Boundary Disputes
Matrimonial Property	Gifts of Property
Equity Release	Buy to Let

Local Solicitors serving the community for 30 years

Contact Ian Howells

**For all your legal needs
CALL US 0845 330 5700
(calls charged at local rate)**

dootsons
SOLICITORS LLP
working for you, working with you

23 Jackson Avenue, Culcheth
CALLS AT LOCAL RATE
0845 330 5700
www.dootsons.co.uk

CULCHETH • LEIGH • ATHERTON

Family farming for 400 years

THE development of a farm which has been in the same family for almost 400 years was the theme of a talk to Lowton WI.

Kenyon Hall was traditionally a mixed arable farm growing cereals and potatoes originally covering 166 acres. It has since grown to 600 acres.

Current owner Tod Bulmer spoke about changes in farming methods and mechanisation, which has completely modernised the work.

He and his wife Barbara took over the farm in 1978 and began producing strawberries and vegetables. It has developed into a major 'pick your own' farm and the couple make jams and chutneys to sell in the thriving farm shop.

In 2002 they diversified by setting up a home delivery service selling fruit and vegetables, and now also offer fresh local meat and home cooked ready meals.

WI meetings are held on the third Wednesday of the month and new members are welcome. The next meeting is on Wednesday May 6 at 7.15pm at Golborne Parkside Sports and Community Club on Rivington Avenue. Further details are available from Norma on 01942 601934.

Homes vetoed

PLANS for a development of 18 dwellings at Croft have been thrown out by Warrington planners.

The development involved nine two and-a-half storey properties and nine two storey properties at Sandy Brow Lodge, in Sandy Brow Lane. Landscaping and car parking spaces were also involved

Advertiser's announcement

DIY warning over caustic cleaning products

OVENU, the Warrington-based professional oven cleaning and valeting specialists, are warning local homeowners of the hidden dangers of strong cleaning products, ahead of the key DIY season.

According to figures from The Royal Society for the Prevention of Accidents (RoSPA) home cleaning products have caused over 15,000 household accidents in one year. With bank holidays fast approaching, traditionally a time for home improvements, an

increasing number of people will be undertaking DIY and home cleaning projects using tools and products that they are not overly-familiar with.

Some of the most dangerous products are used for oven cleaning and contain sodium hydroxide, commonly known as caustic soda, which can cause serious chemical burns and skin irritations.

For more details contact Ovenu Warrington's Paul Clark on 01925 453377 or visit www.ovenu.co.uk



oven
oven valeting service ...punctuality, pride, courtesy...

- Range & Aga Specialists
- Ovens & Hobs
- Extractor Hoods
- Microwave Ovens
- Traditional Stoves

ovenu.co.uk

LET US HELP - PHONE NOW
01925 453377

the UK's favourite oven cleaning specialists



Realise your **child's** potential

Maths and English After-School Programmes

Kumon can help your child progress with their maths and English studies, boost their confidence and help them shine.

Kumon programmes:

- work at a pace that is tailored to your child's needs
- develop invaluable study habits and concentration
- establish a solid foundation for academic success
- complement the school curriculum

Every day Kumon helps children of all ages and abilities to realise their true potential.

Classes held:
Winwick C of E School
Hydonston Lane,
Winwick,
Warrington

Commit: Jane Kirkfoot
01925 419599

KUMON
Every child can shine



Sportsmans dinner – a great success

EVERTON soccer legend Duncan Mackenzie was the guest speaker at Culcheth Athletic Junior Football Club's Annual Sportsmans Dinner at the Royal British Legion in Culcheth.

Darron Bibby event organiser and MC on the night commented that the dinner was a great success and everyone had a really enjoyable night.

He said: "The management team at the Legion were excellent and they simply couldn't do enough for us. On behalf of our football club I would like to thank all of our guests and sponsors for their excellent support on the night."

The dinner raised over £6,000 and every single penny will go back into supporting and further developing childrens football in the village.

Duncan (left) with the management team from the football club.



Gardening tips

Provided by 

May

The fruit garden

It is a good idea to spray fruit trees with an insecticide and a fungicide this month to ensure a clean start to the new season, do not spray when the blossom is open as this will kill bees and other pollinating insects

House plant care

Many houseplants can be propagated by cuttings at this time of year. Be careful not to scorch plants on hot sunny days, move them away from south facing windows.

The shrub border

Early flowering shrubs should be pruned now after flowering is finished, giving the plants plenty of time to produce fresh growth for next springs display.

The herbaceous border

The herbaceous border will have many plants in flower, tall growing specimens should be provided with support, and all plants will benefit from regular feeding

In the greenhouse

Space can be made in the greenhouse by moving summer bedding plants out into frames to be hardened off by gradually exposing them to outside conditions. All plants will need regular watering and feeding, and shading may be necessary, as the sun becomes stronger.

Pond maintenance

Fresh aquatic plants should be available from garden centres and new plantings can be made. Freshly refilled ponds may be infected with algal growth, this is normal and will clear as the pond becomes established.

Lawn care

Newly laid or freshly sown turf should be kept well watered in dry weather. Bare patches on established lawns can be repaired by raking the area to a fine tilth and reseeded, bird activity can be discouraged by covering the newly sown area with a mesh of black thread.

The rose garden

Roses will now be in the full flush of growth, and if the bushes are to remain fresh and healthy throughout the season a regular spraying program using a combined insecticide and fungicide should be implemented. Feed regularly with a rose fertiliser.

And a little extra . . . The days are lasting longer and out thoughts are already turning to alfresco dining. Most entertaining revolves around the barbecue so make sure you've got everything you need in advance so you can enjoy an impromptu get-together with friends.

Financial Problems?

Commercial or Personal
For bespoke solutions contact local specialist

Roger White, MICM

For FREE Initial Advice

Strictly Confidential

01925 762497 or 07946 820299



Campbell Crossley & Davis
LICENSED INSOLVENCY PRACTITIONERS

carpe diem

WEB DESIGN, DEVELOPMENT & PRINT

Delivering creative web and print solutions since 1999, Carpe Diem have developed strong working relationships with clients of all sizes.

UKTV, ASICS, Onitsuka Tiger, Transform Medical Group, Otelo, The Energy Ombudsman, Halle Orchestra, URBS

T: 01925 209 842 60 High Street
F: 01925 434 5075 Newton-le-Willows
E: info@carpe-diem.co.uk W: 12 854
www.carpe-diem.co.uk

Website Development

E-Commerce

Branding

Print

SEO / PPC / Marketing

SMS / MMS / Email Campaigns

Hosting

DVD / Video Production

Product Photography

Fall in love with your garden all over again.

Summer is almost here. Time to visit the Best Garden Centre in the UK. With lighter evenings and late night opening, there's more time to be seduced by our exciting new furniture collections and exclusive designs for gardens, patios and interiors. Discover one of the largest displays of outdoor furniture in the North West and fall in love with your garden all over again.



AWARDED BY ICA
BEST GARDEN CENTRE IN THE UK 2009
BEST OUTDOOR LIVING DEPARTMENT 2009



For beautiful living

Rose Garden and Home, Warrington Road, Glazebury, Warrington, WA3 5NF
Tel: 01542 283330 www.bents.co.uk
Open 7 days and bank holidays. MON-FRI UNTIL 8PM



Civic Sunday

THE Chairman of Culcheth and Glazebury Parish Council, Councillor Jacqui Johnson, is pictured with members of the Parish Council and her husband David during Civic Sunday.

Also attending the beautiful and uplifting service were Chairmen from other parishes in Warrington, along with representatives from local organisations.

The service was conducted by the Rev. Chris Stafford at Newchurch Parish Church, followed by a buffet lunch in the Parish Hall.

The event gave the Parish Council the opportunity to meet other Chairmen, and also to say thank you to people such as the Lions, and youth organisations, for their work in the community.



Rat poison found in stream

RAT poison has been found floating in a stream at Culcheth.

The poison, contained in plastic bags, was found by Culcheth and Glazebury parish councillor Jacqui Johnson while she was out walking her dog. Other members of the public also discovered the plastic bags - labelled 'sewer bait' - at other parts of the same stream.

Coun Johnson alerted borough council environmental protection officers who also visited the scene.

She said: "This poison is intended for use in sewers - not streams to which the public has access.

"The stream involved is unnamed but is officially known as the Wellfield Wood watercourse. Part of it is culverted and I think someone may have thought it was a sewer.

"But the poison has clearly been used in the wrong place. It is dangerous for wildlife and also dogs.

"If anyone comes across any of this poison in local streams they should contact the borough council immediately."

A walk in the woods

A GROUP of pupils from Glazebury Primary School pulled on their wellies and went for a Walk in the Woods - a new children's ramble created by Bents Garden and Home around Windy Bank Wood.

The three mile walk, starting from the Glazebury garden centre, is a purpose designed children's walk using themed leaflets youngsters can use to guide adults and parents around. The guide links with Wayfarer signs throughout the walk provided by the Forestry Commission.

Managing director Matthew Bent said: "We approached the Forestry Commission earlier this year with our

idea for a children's walk in Windy Bank Wood and they were very receptive to the idea. They have been hugely helpful in creating the wildlife themed signage and installing it.

"We hope the children enjoyed guiding their teachers around the wood and looking out for all the different things to spot."

Springtime at High Legh Garden Centre



EVERGREEN
Complete Lawn Feed,
Weed & Moss killer
360sqm

£22.99
each



New Horizon
Organic Poultry
Manure 7.5kg

£5.99 each
or 2 for £10.00



Round Up
Pump & Go
5 litre

£25.99
each



Stewarts
Self Watering Balconiere
Troughs 50cm
Green/Terracotta/Chocolate

£4.99 each
or 2 for £8.00



Magigrow
Soluble Plant Food
1kg

£4.99 each
or 2 for £8.00

all offers are subject to availability



High Legh • Knutsford • 01925 756991

Mon - Sat 9am - 5.30pm Sun 10.30am - 4.30pm

www.strikes.co.uk

STYLES & CO
 CHARTERED ACCOUNTANTS

- Tax Planning
- Corporate Finance
- Audit & Accounts
- Management Accounts
- Business Development
- Business Sales & Acquisitions
- Forensic Accounting

Heather House,
 473 Warrington Road,
 Culcheth, Warrington,
 WA3 5QU

Tel: 01925 761600
 Fax: 01925 761601
 Email: mail@stylesandco.co.uk

THE STYLES FILES & CO
 CHARTERED ACCOUNTANTS

Your company's corporation tax – could you become liable?

IN today's climate you may be having difficulty meeting your current Corporation Tax liability, which could be a sizeable amount, having arisen prior to the downturn. Make sure you don't fall into the trap of underpaying it.

If you are a Director of a company, and continue to receive dividends knowing there may be insufficient reserves within the company to meet the Corporation Tax liability, BEWARE! You may become personally liable for the shortfall, as highlighted in a recent case.

- Mr A was a director/shareholder of a number of companies.
- Mr A became aware that the relationship between these companies gave rise to a large Corporation Tax liability.
- Dividends continued to be paid resulting in insufficient reserves within the company to meet the Corporation Tax due.
- Payment of these dividends was seen as using money destined for the Revenue to pay the shareholders.
- The court ruled that once it was clear that the company had insufficient reserves to meet the Corporation Tax liability, payment of any dividends was unlawful.
- Mr A was in breach of his duties as a Director in authorising illegal dividend payments and in turn became personally responsible for meeting the shortfall in reserves.
- Mr A was forced to repay the dividends to the company so the company could meet its liabilities to the taxman.

What you can do?

- Use regular management accounts to ensure you reserve enough funds to cover the corresponding Corporation Tax after paying dividends from current profits.
- If you or your fellow directors/shareholders have interests in several companies, check they are not associated otherwise this may increase your company's CT.
- Check the level of last year's reserves and only pay this year's interim dividends up to that level.
- Speak to the Revenue – they now have a scheme in place for companies experiencing difficulties at the present time. Better than incurring their hefty fines for late payment.

If you would like advice or assistance in reviewing your company's Corporation Tax liabilities, or help with preparing Management Accounts please contact Les Styles, Ian Lloyd or any member of our tax and accounting team at Styles & Co on 01925 761600.

Please note that these ideas are intended to inform rather than advise and you should always obtain professional advice before taking any action.



If you would like more information on this or any of the previous subjects we have featured, please contact Les Styles or Ian Lloyd on 01925 761600.

The Styles Files are provided by Styles & Co
 473 Warrington Road, Culcheth, Warrington WA3 5QU

For further details please telephone 01925 761600
 or visit our website at www.stylesandco.co.uk

sporting lodge inns the grayhound hotel

Warrington Road, Leigh, Lancashire WN7 3XQ
 www.sportinglodgeinns.co.uk
 Call us back on 01942 671256

bring the kids along to take part in our

Circus Workshop

sunday
 3rd & 24th
 may

**£13 per adult
 £7 per child**

and enjoy our delicious three course family Sunday lunch

Timeless . . . Versatile . . . Designs
 Granite, Marble & Quartz in any colour you desire

All personal, bespoke designs of:

- Kitchen Worktops
- Fire Surrounds
- Window Sills
- Vanity Units
- Wall Coverings
- Tables & Desks
- and much much more!

Come and visit our showroom

One week turnaround on granite worktops

All public and trade welcome

Athena Marble & Granite

Unit 1, New Col Lane, Woolston, Warrington WA1 4JG
 Tel: 01925 819083 Fax: 01925 816575

Shop Local

Welcome to our special feature which is aimed at encouraging our readers to support local businesses. Any local business wishing to feature in future editions please contact us on 0800 955 5247. Please mention this publication when responding to an advertiser.

medi-Slim

Clinic held alternate Thursdays 5-7pm



- Medically qualified doctor & nurse
- Several types of medication to suppress your appetite
- Healthy eating and exercise advice
- Works well for both women and men
- Consultations & 14 days medication - £25

Park View Centre, 21 Common Lane, Culcheth

Tel 01925 762404
or 01942 701721

For more information or to make an appointment

Mother Earth's Beauty

You can't stop time, but now you can reverse its effects, With luxury beauty treatments now available.

Deep Collagen Facials • Anti - Aging Ice Masks
Relaxing Indian Head Massage • LHE skin rejuvenation
& hair removal & many more treatments available

For more info or to book an appointment
Call Pat situated at Alive & Well

07720 805331 or 01925 824455

(4/09)

At last music lessons that your child will WANT to do

Clive's Easylearn Pop Music Schools

guitar
drums
bass
keyboards

weekly lessons in learning & performing in a rock band

For a FREE taster session
Click or Call
clivesmusic.com
07751 497488

Spaces available NOW in Lowton



CCTV-Secure.co.uk

Secure Your Home

See who is at your door or outside your home, while you are at home, in bed, at work or even on holiday. Free Consultation, Survey and Risk Assessment, Demo Facilities in Culcheth or Mobile at your Premises

01925 242 496 or 07931 475 349

Culcheth Tyres

UNIT D1 TAYLOR BUSINESS PARK, CULCHETH

Your Local Independent Tyre Specialists



HIGHEST STANDARDS OF SERVICE
QUALITY PRODUCTS
GENUINE VALUE FOR MONEY

*NO HIDDEN COSTS
*NO INFLATED PRICES
*WE CAN COLLECT YOUR CAR FROM YOUR HOME/WORKPLACE

ON YOUR DOORSTEP UNBEATABLE SERVICE

TEL: 01925 766987/766380

Located off Werrington Road, Taylor Business Park
UNIT D1 TAYLOR BUSINESS PARK, CULCHETH

OPEN:
MON - FRI
8.30 - 5.30
SAT
8.30 - 2PM



The Raj

- Indian Restaurant -

Opening Times:

Mon to Thurs 3pm - 11pm
Fri and Sat 5pm till midnight
Sunday 4.30pm till 10pm

Any starter, main course, ice cream & coffee

For Only £19.95 per person*



2 for 1 on main meals
Monday - Thursday
**for restaurant diners only*

Tel: 01925 765551
36 Common Lane, Culcheth

(4/09)

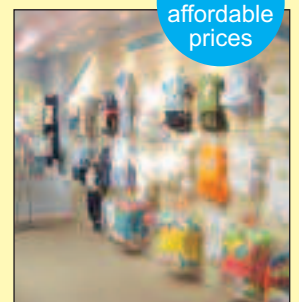
New Arrivals Babywear & Beyond



Quality at affordable prices

- ✓ Baby Wear - from 0 - 24 months
- ✓ Premature outfits - (dresses shorts & T-shirt / nightwear etc)
- ✓ Christening Wear - including outfits, shoes, shawls, hats etc
- ✓ Special Occasion Wear for Boys & Girls (including 3 piece suits / party dresses)
- ✓ Baby Gifts - and many more associated products.

Unit 32, CPS Shopping Centre, Culcheth
Tel: 07852 137097
Email: new.arrivals@hotmail.co.uk
www.newarrivalsbabywear.com



Le Brunch Sandwich Bar



- Freshly made Sandwiches
- Choice of Breads, Wraps or Baked Potatoes
- Homemade Soup
- Cakes, Muffins and Cookies
- Extensive Coffee menu
- Business lunches catered for

Tel: 01925 733888 Fax: 01925 733999
439 Warrington Road, Culcheth, Warrington WA3 5SJ

(15/09)

Taxi base approved

PLANNING chiefs have given the go-ahead for a taxi base station above a wine bar at Culcheth.

The change of use of offices above the Bacchus wine bar in Common Lane was opposed by Culcheth and Glazebury Parish Council. - but planning officers recommended approval and members of the borough's development control committee decided the scheme could go ahead.

An application for a radio aerial mast at the rear of the property, which was also opposed by residents of Thompson Avenue, was also approved.

The parish council was concerned that the proposal would lead to local car parks and Common Lane being used as taxi waiting areas.

There was also concern that the aerial mast would have an adverse impact on residents of the Cherry Tree pub and Thompson Avenue.

Residents were concerned about interference to TV signals and wifi systems.

Bonnets on parade

PROUDLY displaying their entries in the Easter Bonnet Competition at Culcheth Community Primary school are from left, Amelia Hopkins aged 5, Sarah Eaton-Taylor aged 7 and Lilly Gibbons aged 5.

Apologies for missing your names out of the last issue - but you did make front page!



PARKVIEW Centre

A multi therapy centre

Kathryn Grace & Associates
HPC (State) Registered Chiropractors/Podiatrists
20 years experience

- Sports Biomechanical Assessments
- Diabetic Foot Care & Assessments
- Nail Surgery • Verrucae Advice
- General Footcare

Park View Centre, 21 Common Lane, Culcheth, Warrington, Cheshire, WA3 4EW

For all enquiries call: 01925 762404

D.R.B. Jewellers

It's time to close Pandora's box
CHAMILIA
Jewellery that defines you



fully compatible with Pandora bracelets
Walt Disney Exclusive Disney Designs

switch
CLICK RING
the original



fully compatible with Chamilia & Pandora beads

25 Church Street, Frodsham, WA6 6PN

01928 731675



THIS MONTHS OFFERS!

- 500 FULL COLOUR DIGITAL BUSINESS CARDS **£35⁰⁰** BUY 1 SET GET 1 SET FREE!
- 100 A3 FULL COLOUR POSTERS **£38⁰⁰**
- 500 FULL COLOUR A6 DOUBLE SIDED LEAFLETS **£50⁰⁰** BUY 1 SET GET 1 SET FREE!
- 10,000 FULL COLOUR A5 LEAFLETS **£248⁰⁰** BUY 1 SET GET 1 SET FREE!

The New Media Centre,
Old Road, Warrington, WA4 1AT
Tel: 01925 240 247
E-mail: info@247print.net

twentyfourseven
creative and print solutions



Erica signing a book for forget-me-not owners Victoria Simpson-Forrest and Naomi Simpson

Best selling author drops in

BEST-SELLING author Erica James dropped in at Culcheth Library to talk to fans and sign copies of her latest novel 'It's the Little Things'.

The Cheshire-based writer had been invited by Culcheth's forget-me-not bookshop but the event was hosted by the library because of the number of enthusiasts expected.

Fifty people attended, including a reading group from Croft and Erica proved to be an entertaining speaker, talking with the audience for more than two hours about how she got into writing, her unique way of building characters, the settings for her books and the world of publishing.

Locals had the chance to ask her questions and she answered all of them in a very candid, open and honest way,

Her daily routine when writing a book starts in the study at 8.30 am finishing at 7.30 pm, only stopping for lunch and to touch base with her sons when they arrive home from school.

Anyone who missed the event can still pick up a signed copy at forget-me-not.

Erica's next book – which will be her 16th – is due out in the Spring next year and it's looking like she will be making a return visit to Culcheth.

Naomi Simpson, of forget-me-not, said: "Erica is very charming person. She talked openly of some funny and touching events in her life and really had the audience captivated. We look forward to the release of her next book and to welcoming her back to Culcheth."



Frodsham Business Centre

Bridge Lane, Frodsham, WA6 7FZ



Easy Access To/From The Motorway

Just off M56 Junction 12

Office Suites Available Early 2009

- Sizes Starting From 250sq ft • Other Sizes Also Available
- Wide Range To Choose From • Short & Long Term Licences



For more information

Tel/Fax: 01928 733151

www.frodshambusinesscentre.co.uk

That Beautiful Restaurant in Culcheth

Spice Lounge BAR & RESTAURANT



Opening Times

Monday - Thursday 5pm - 11pm Friday & Saturday 5pm - 12pm
Sunday 4pm - 10pm
Open 7 days a week, including Bank Holidays

**Call: 01925 767 777
01925 767 744**

Bookings taken by email: miah@thespicelounge.com
More offer vouchers available on our website
www.thespicelounge.com



411 WARRINGTON ROAD,
CULCHETH

20% OFF Your Food Bill
if you book your table before 6pm
On production of this voucher
Excluding Sunday

CLASSIFIED

Advertising: 0800 955 5247

AIR CONDITIONING SERVICES

HEATING, COOLING, DEHUMIDIFYING, freshly filtered air, for homes, conservatories, retail outlets, offices, surgeries, salons. Installed in a day, 5 years guarantee, lease options, tax rebates, free survey, call **John Duggan, 4 Seasons Ltd 01925 754444 www.4seasons Ltd.co.uk** (16/09)

AIRPORT TRANSFERS

OPTIMUM TRAVEL: 24hr Airport Transfer Specialists. Quality service in Quality vehicles at realistic prices. Full Meet and Greet at all Airports. All areas covered. **01925 601 259** (11/09)

BATHROOMS



CARPET CLEANING

A1 STAINBUSTERS: Fully guaranteed carpet and upholstery deep dry cleaning. Clean & dry in only ONE hour. Quotes for both commercial and domestic. Contact the Local expert **John Latham FREE on 0800 137772 or call 07765 314080** (19/09)

CARPETS AND UPHOLSTERY . . . as good as new. From stain removal and damage repair to simply reviving your carpets. Rugs, curtains and upholstery. Guaranteed to lift grease and dirt thoroughly and gently without risk. The UK's top insurance companies use Rainbow International Fully insured and guaranteed. Tel: **01925 852300.** (19/09)

SAFE CLEAN: SAFE ORGANIC CLEANING. Specialists in cleaning all leather and fabric upholstery, rugs, carpets and curtains in situ. Ask about our new organic allergy relief system, Guardsman stain protection plans and carpet repairs. Call **Carey Randall on 01925 815724** (16/09)

CHILDREN'S ENTERTAINER

MAGIC 4 CHILDREN Magic show, musical games and animal-balloons with heaps of participation for ages 5 to 9. Three hilarious shows to choose from. **Ken Kelly Magician 01925 650319 www.magic4children.co.uk** (09/09)

COMPUTERS

AED COMPUTER SERVICES. For all your PC servicing requirements including: Hardware repairs /upgrades, Software / Operating System re-installs, Virus removal, basic training: Tel: **01925 766426, mobile: 07870 260657, email: enquiries@aed-cs.com, Web: http://www.aed-cs.com** (13/10)

DELIVERY SERVICES

FURNITURE FERRY LIGHT REMOVALS. Collections arranged from Ikea, Costco and other stores, garden centres, auctions etc. You choose, you buy, I deliver - SIMPLE. Reliable, inexpensive service. Tel: **Matt 07970 178 333 or 01942 732768. www.furnitureferry.co.uk** (15/09)

TnM Couriers - specialists in urgent UK same day deliveries, international and UK next day services available, contract work undertaken, parcels to pallets, no job too small or too big, competitive rates. Call **01925 639029.** (08/09)

DRIVING TUITION



ELECTRICAL CONTRACTORS

EVERGREEN ELECTRICAL CONTRACTING. NICEIC approved contractor. For lights and sockets to rewires, fuse-box upgrades. Qualified electrician. All work is to the latest IEE wiring regulations. No job too small. Most major credit and debit cards accepted. Tel: **David on 01925 724219 / 07971 407022.** (19/09)

PAUL A LEWIS Electrical Contractor. Additional sockets, lights, security lights, mains board replacements, garden lights / sockets. All work guaranteed. No job too large or small. Tel: **01925 758337 or 07966 386806.** Est 22 years. (16/09)

FIRES & FIRE SURROUNDS



GARAGE DOORS

GARAGE DOORS Cheshire Doors, up & over garage doors. Supplied, Installed, Repaired, Automated. Established over 30 years serving the Cheshire area. Free quotations. Call **Brian 01925 710681.** (11/09)

GARDEN & PET MESHES

WE HOLD large stocks of garden and pet meshes. Why pay garden centre and DIY prices. Trade enquiries welcome. **Wirecloth Sales & Development Ltd, 11A East View, Grappenhall, Warrington, Cheshire WA4 2 QH. Telephone: 01925 268417. Email: wireclothsales@aol.com Web: www.wireclothsales.co.uk** (19/09)

GARDENING SERVICES



LAWN DRAINAGE AND SOIL AERATION. No trenches, no drainpipes, no digging, no repairs, no hassle. If this interests you **Contact Bob Harper 01925 266852 or 07952 608701.** (19/09)

M J NEEDHAM LANDSCAPES Award winning with over 15 years experience. All aspects of landscaping, specialist in bespoke construction. Qualified design service available. **Contact 01925 825 645 or 07888 730 383** (19/09)

HANDYMAN

LOCAL HANDYMAN for all those jobs you cannot get anyone to do. House maintenance, flat pack assembly, fence repairs etc. No job too small. **Phone Peter on 01925 762 645 or 07523 419 216.** (19/09)

HOLIDAY ACCOMMODATION

ANGLESEY, Myndd Bodafon, Lligwy. Newly converted luxury five star barn, sleeps 4 to 12. Close to Blue Flag beaches, amenities and coastal walks. Available for long/short breaks. **Contact 01925 758868. www.toohoots-anglesey.co.uk** (18/09)

CONWAY MARINA Newly refurbished 3 bed holiday cottage. Sleeps 5 comfortably. Prime Location. 200m to beach, marina, championship golf and pub. New for 2009. **Contact 01925 604649 evenings.** (18/09)

LLWYN HELYG Llanbedrog near Abersoch, Luxury holiday accommodation, newly refurbished, sleeps 6 - 7. A short walk to the beach, near to shops and restaurant. Property can be viewed at **www.abersochqh.co.uk.** Long or short breaks available. Tel **01758 730729 Mob 07787 796522** (19/09)

INTRODUCTION AGENCY



IRONING SERVICES



LOFT CONVERSION

EASY LOFT CONVERSION. MORE SPACE - LESS £££ Fitting includes: 2 electric lights (Part P), full insulation, full boards, loft ladders. £549.00. **Free Quote: 01925 251005 / Andy 07730 681065 / Ian 07723 409548.** (19/09)

MORTGAGES

INDEPENDENT FINANCIAL ADVICE RGF ASSOCIATES LTD Mortgages, Life assurance, Pension, Savings and Investments all under one roof. **For local, friendly advice Call Free on 0800 458 2705 or mobile after office hours 07855420367** (16/11)

MORTGAGEFORCE - 1 phone call, 1000s of mortgage deals. For local, impartial and professional advice on all aspects, including remortgages, buy to let, adverse and first time buyers. **Phone 01925 266899 for details. Your home may be repossessed if you fail to maintain payments.** (05/09)

PAINTING & DECORATING

CRS DECORATING SERVICES AND BC PAINTERS Interior and Exterior painting. Beat any genuine written quote. Fully Qualified. **Phone for a free quotation on 01925 762 659 or 07999 367 661** (18/09)

STRIP 4 U All walls, ceilings and woodwork professionally stripped. Quality painting and decorating service for interior/exterior. Fully insured, clean and tidy. **Call Carl for a FREE ESTIMATE on 01925 657469 / 07950 385904.** (16/09)

PAINTING & DECORATING

STROBE PAINTING & DECORATING quality painters and decorators. All aspects of work including interior and exterior and wallpapering. Small DIY jobs. 25 years experience. **Free quotations. Tel Rob on 01925 721 327 or 07854 052744.** (18/09)

PAYROLL

WHY TRY TO BE A PAYE EXPERT? Watkinson Black can provide a cost effective payroll service, releasing you to concentrate on your business. **For further details please phone: 01925 413210 or e-mail: info@warringtonaccountants.co.uk** (16/09)

PLANS DRAWN

PLANS PREPARED on CAD for planning applications. Extensions, new build etc. Fast, local service. Competitive quotes. **Contact Jonathan Renshaw MRICS On 0161 749 7648 or jonathanrenshaw@crnorth.com** (05/09)

PLASTERING

BEA PLASTERING OF CHESHIRE. Reliable and friendly service, no job too small, all types of plastering work undertaken, free estimates. All insurance work undertaken. **Call David anytime on 07786245068 / 01925 753966. Member of the Guild of Master Craftsmen** (19/09)

CULCETH PLASTERING. Reskims, dry-lining, patching and coving. Specialist in extensions and conservatories. Quality craftsmanship. Professional and reliable service. **20% OFF with this advert. Call Mark on 01925 733640.** (07/09)

G TRIGG PLASTERING Time served, fully qualified plasterer. All aspects of plastering including dab and skim, float and skim, render, pebbledash, artex over skimmed, ceilings renewed, insurance work. **For free quotes and advice with a quality friendly service please call Gary on 01942 276211 or 07983 346786.** (08/09)

SITUATION VACANT



TREE SURGERY

R&R TREE SERVICES Local business. Trees felled and pruned, hedges cut and shaped, conifers a speciality, turfing and fencing, all waste removed. Licenced and insured. **Contact Robert on: 01942 673736 or 07811 954 065** (18/09)

TUITION

SPANISH LESSONS IN CULCETH Daytime tuition in Spanish grammar for adults - beginners or revision. Experienced retired tutor; friendly relaxed lessons for singles or couples. **Tel 01925 765 962 or Mob 07922 155 275** (18/09)

VIDEO PRODUCTION SERVICES

HISTORIC MEDIA PRODUCTIONS Broadcast quality Video Production, event coverage, filming & editing services, video to DVD conversions. All types of events covered, competitive rates. **Contact James Balme 07946 290917 www.youtube.com/Tvpresenter4history** (11/11)

WINDOWS & CONSERVATORIES

SP GLAZING for all your glazing requirements, double glazed units including failed and misted units, broke windows, mirror fixing. Kite marked to B/S. Time served glazier with over 30 years experience. **For a friendly no obligation quote tel Sam Pendlebury on 01942 671859. Mob 07919 660296.** (11/09)

INSTANT MONEY

We are buying
GOLD (even broken) - **COINS** - **WATCHES** -
DIAMONDS - **JEWELLERY**
in ANY condition



**THAT OLD WATCH
COULD BE WORTH
THOUSANDS OF POUNDS**

ROLEX - PATEK PHILIPPE - JAEGER LE COULTRE
AUDEMARS PIGUET - OMEGA - VACHERON - LONGINES etc



**BEST
GOLD
PRICES
PAID!**

In these days of rising bills and expensive mortgages it can be a real struggle to make ends meet.
IN SUCH TIMES - CASH IS KING!

You might have items of old, damaged, unworn or unwanted jewellery in gold, silver or platinum

**CASH IS KING - SO CASH THEM IN!!!
PAWNBROKING SERVICE AVAILABLE**

AB&S

10 Cairo Street, Warrington Town Centre WA1 1ED
Tel: 01925 633706

also at

6-8 Walton Road, Stockton Heath WA4 6NL. 01925 601455

Smashing the competition!

Liam James urgently need more properties
to appease their waiting tenants

£150 Letting fee
8% Management fee

If you are looking for an agent that works please call

Tenant Referencing
Only £25*

* Plus VAT. Introductory offer

We specialise in:

- Lettings • Furnishings • UK Investment Sales
- Property Management • Overseas Investments Sales
- Independant Mortgage Advice



27 Cairo Street, Warrington WA1 1EH www.liamjames.co.uk
enquirieswa1@liamjames.co.uk

01925 575 883