

# Culcheth *Life*

**FREE EVERY MONTH**

Issue: 94  
January 2011

**Dootsons**  
Family Law Specialists

See main ad  
Page 8

23 Jackson Avenue  
Culcheth  
0845 330 5700

CULCHETH • CROFT • GLAZEBURY • GLAZEBROOK • LOWTON • WINWICK AND SURROUNDING AREAS



**Panto time**

Page 3

All the latest news: [www.culchethlife.com](http://www.culchethlife.com)

Editor  
Gary Skentelbery

Production  
Paul Walker

Advertising  
Freephone  
0800 955 5247

Editorial  
01925 623633

Email  
info@culchethlife.com

Websites  
www.culchethlife.com  
www.frodshamlife.co.uk  
www.lymmmlife.co.uk  
www.warrington-  
worldwide.co.uk  
www.warrington.tv

Address  
New Media Centre  
Old Road Warrington  
WA4 1AT

*Culcheth Life is published  
monthly by Orbit News Ltd.*

*The contents of this magazine  
are fully protected by copyright  
and nothing may be reprinted  
or reproduced without prior  
permission of the publishers.*

*The publishers are not liable for  
any statement made or opinion  
expressed by third parties in this  
publication.*

*Printed by TwentyFourSeven*

# Editor's Comment



**A MONTH ago, in this column, we were critical of planning officers who were recommending that the waste disposal company Biffa should be allowed another 18 months to complete tipping at the Risley Landfill site, despite having failed to meet deadlines twice previously.**

In fact, the company have been given only 12 months and, on the basis that half-a-loaf is better than no bread, we welcome this.

But it is no thanks to the planning officers. It was the elected councillors who had the bottle to tell Biffa: "Enough is enough."

The planning officers, recognising

that their recommendation would be unpopular, argued that there was "no alternative" to allowing the tipping to continue.

If their view had prevailed, the same argument would surely have been acceptable if the tip was still incomplete even after 18 months. And so it would have gone on.

Hopefully they now realise there is nearly always an alternative if one has the will to look for it.

We realise, of course, that in 12 months the company could come back with the job still incomplete and say: "We told you so." But they will only be able to do that if the borough council fails to monitor progress on site.

For now, we congratulate the elected councillors on their stance. And keep our fingers crossed for next year!

## Residents to be consulted on drainage?

RESIDENTS of Culcheth may be consulted on whether or not they are prepared to pay extra council tax for one year only to meet the £33,000 cost of improving drainage on the village green.

Culcheth and Glazebury Parish Council wants to carry out the work - but has been unable to obtain grant aid towards the cost.

The council has £10,000 earmarked for the scheme but would need to increase the parish precept - probably by about £5 per council tax payer - to raise the balance.

Coun Keith Bland said: "We would have to consult the residents to find out if they would like us to do this work."

"The increase would be for one year only." Flooding has been a major problem on The Green for some years.

At one time a 'pond' formed which even attracted ducks!

Waterlogged turf has sometimes caused difficulties on Community Day.

Coun Bland said Culcheth and Glazebury had one of the lowest precepts in the borough but it would still be necessary to consult residents.

## Financial Problems?

Commercial or Personal

For bespoke solutions contact local specialist

**Roger White, MICM**

For FREE Initial Advice

Strictly Confidential

**01925 762497 or 07946 820299**



**Campbell Crossley & Davis**  
LICENSED INSOLVENCY PRACTITIONERS

TaylorBusinessPark.com



business PREMISES  
TO LET WARRINGTON



Contact: Paul Taylor or Paul Fairclough  
Tel. 01925 763851 Fax. 01925 762805  
Email. info@taylorbusinesspark.com

**culcheth tyres**  
and autocentre  
**TYRE SAFETY**

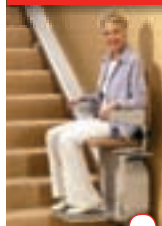
Culcheth tyres are offering customers FREE tread, Pressure and general condition checks for their tyres.

Culcheth Tyres are committed to tyre safety. Customers having such checks can be confident that their tyres are performing correctly, especially during the winter months that can prove treacherous correct tyre pressures can also improve on fuel consumption. Figures from 2008 show a year high of prosecutions in England and Wales successfully prosecuting 4300 drivers with defective tyres. Drivers failing to comply with current regulations of 1.6mm of tread depth across the central three quarters of the circumference of the tyre face a fine up to £2,500 and 3 penalty points for each illegal tyre.

NOT ONLY COULD A FREE CHECK SAVE YOU FROM PROSECUTION,  
IT COULD HELP SAVE LIVES

You can find us on Taylor Business Park, Risley, Warrington, Cheshire,  
WA3 6BL or for Free honest advice call: 01925 766 380 / 766 987

**Come And Meet The Experts**



[www.millercare.co.uk](http://www.millercare.co.uk)

Showrooms also at:

Blackpool • Bolton  
Manchester • Oswaldtwistle  
Preston • Stockport  
Wigan

**Warrington's  
Only  
Stannah  
Dealer**

**MillerCare**  
Mobility Specialists

1 Kingsway North, Manchester Road, Warrington WA1 3NL

**FREEPHONE 01925 670433**

# Young farmers' success story

**MEMBERS of Croft Young Farmers' Club are celebrating a remarkable success story that has seen them become one of the strongest clubs of their type in the North West.**

A year ago they had just three members - but now they have more than 50.

They run a programme of weekly

events - social and educational - which is attracting new members all the time and have won a number of county competitions.

Chairman Thomas Leather, of Glazebury, said: "We just can't believe how well we have done in such a short time and we want to let everyone know about it."

Croft had a young farmers club many years ago but it fell on hard times and ceased to operate.

### Re-formed

Little more than a year ago it was re-formed - with just three members.

Thomas said: "You don't actually have to be a farmer to be a member, although 70-80 per cent are connected with farming in some way. "Our members come from quite a

wide area, not just Croft. We meet every week for a variety of events. Some are purely social others educational.

"We go on outings, have talks on subjects as varied as fire safety, agricultural machinery, etc. We go on visits, to farms of varying types and other places.

"With an age range of 11-26 we are, basically a youth club."

Anyone interested in joining can just turn up at a meeting - every Monday at 7.45pm at Croft Church Hall - or they can call Thomas on 0787 253 0180.

## Players perform Sleeping Beauty



(L-R) Kirsty Thompson - Queen 1 Phil Ratcliffe - King 1 Lucy Hill - sleeping beauty, Scott Bailey-Edwards - Prince, Christine Boardman - King 2 Jane Bloomfield - Fairy Liquide (good fairy) Ayesha Morris - Carabossy (wicked fairy) and Steve Beech - Egor.

CULCHETH Players have been busy rehearsing for their production of Sleeping Beauty which takes place at Culcheth Sports Club from February 11-13.

The show starts at 7.30pm on Friday and Saturday with a matinee performance at 2pm on the Sunday.

Tickets are available from the club bar at Culcheth Sports Club (Daten) or by calling the ticket line on 07824 424 538.

Sleeping beauty is played by Lucy Hill, while the Prince is Scott Bailey-Edwards.

### UNSWORTH'S FUNERAL SERVICE



Independent family owned Funeral Directors

489 Warrington Road, Culcheth

Providing 24 hour personal care by Jackie Unsworth, Phil Done, Kevin Melling and Tim Hargreaves-Stead

**Tel: 766006**

**MELROSE CHAUFFEUR SERVICES**  
ARRIVING IN STYLE

**01925 55 55 34**

Manchester / Liverpool Airport from £30  
Manchester / Liverpool City Centre from £35  
Wedding Cars Request a Quote  
Corporate Accounts Available

5 STAR TRAVEL FOR THE PRICE OF 3 STAR

info@melrosechauffeurservices.com www.melrosechauffeurservices.com

## The GENERAL ELLIOT

Come and relax in our warm beautiful surroundings

Pensioners 'Lite Bites' Mon-Fri  
£6.50 2 courses

**Jan & Feb Offers**

'Early Birds Menu' 5pm-7.30pm  
£10.95 for 2 courses

FREE Room Hire - Function Room  
(holds 40 people)

## ELLIOT'S GENERAL STORE

Located next door to the General Elliot

Open 7 Days a week

Mon - Fri 7am - 6pm  
Sat 8am - 6pm  
Sun 8am - 4pm

Tel: 01925 766900 51 Lord Street, Croft WA3 7DE

Email: info@thegeneralelliot.co.uk Web: www.thegeneralelliot.co.uk

# BRIDGEWATER SCHOOL

We are an Independent School for boys and girls aged 3 - 18 years, located in a delightful semi-rural setting in Worsley.

Bridgewater is a school which cherishes the individuality of each child and is naturally the right choice for so many children. Whatever your child's talents and interests we can build on those and help them to appreciate their talents as well as appreciating and applauding others.

We are always delighted to show our genuinely caring and nurturing environment. We also offer a broad range of School Bus routes providing a safe and secure environment to transport your child to and from school.

For more information please visit our website: [www.bridgewater-school.co.uk](http://www.bridgewater-school.co.uk) or call 0161 794 1463 to arrange a personal tour.

Entrance Exam is Wednesday 2nd February 2011

Bridgewater School, Drywood Hall, Worsley, Manchester, M28 2WQ

[www.bridgewater-school.co.uk](http://www.bridgewater-school.co.uk)



Members of the school choir, from left to right, Abigail Jones, Adam Jones, Nadia Cunningham, Jack Bailey and Jennifer Stephenson, with the award.

## Pupils 'sing up' for gold award

**GLAZEBURY CE Primary School has become one of only two schools in the borough to achieve the Gold standard in the national 'Sing Up' initiative.**

Sing Up is a nationwide singing programme, with awards for schools which meet certain criteria.

An award recognises a school's commitment to singing by pupils and staff.

Glazebury showed its commitment by taking part in Songs of Praise on Culcheth Village Green, singing at the Over 60s club, Bents Garden and

Home, the MEN Arena in Manchester and, of course, in school and at church.

The school provides a choir for church weddings.

Only three schools in Warrington received a Sing Up award - and Glazebury and one other were the first, and so far, only, to achieve the Gold standard.

# ENROL NOW!

## NEW YEAR NEW START

Make 2011 the year to shout about!

- Enhance your career prospects
- Full-time and part-time study
- Re-skill for work
- Excellent student support

We have a wide range of full-time courses starting in January 2011 including:-

- Art & Design • Beauty Therapy • Business • Bricklaying
- Carpentry & Joinery • Construction • Electrical Installation
- Engineering (Electrical & Electronic) • Horticulture
- Mechanical Engineering • Painting & Decorating • Plastering
- Plumbing • Personal Development & Career Progression
- Public Services

We also have a wide range of Apprenticeships and part-time courses on offer.

For a copy of our complete course list visit

[www.wigan-leigh.ac.uk](http://www.wigan-leigh.ac.uk)

or call

**COURSE ENQUIRIES 01942 76 11 11**



# Pupils support White Ribbon campaign

**PUPILS at Culcheth High School showed their support for the White Ribbon campaign - the national anti-domestic abuse initiative.**

They wore white ribbons and took part in special sessions to raise awareness of the issues surrounding domestic abuse.

PC Jeff Mather, police school liaison officer for Warrington, has been delivering the sessions to year 11 pupils at the school as part of the national curriculum.

He said: "I have been working closely with the school to deliver the sessions. The idea is to raise awareness and identify the issues surrounding domestic abuse. The sessions have also been the ideal platform in which to promote the Warrington White Ribbon

campaign.

"As part of those sessions we explore the personal and family effects of domestic abuse, the law surrounding it and crimes that may be committed by offenders. We also take a look at how society has changed over the past 50 years, how the police deal with incidents and how people can report incidents as well as focusing on the support services that are available.

"The sessions have been very well received by both staff and students at Culcheth High and I would like to thank them for their continued support in raising awareness of this important

issue."

Rachel Zammit, domestic violence strategic co-ordinator, added: "It is extremely positive that Culcheth High School is working in partnership with the Warrington Domestic Abuse Forum to raise awareness of the issue and to increase the understanding of the issues surrounding domestic abuse via these dedicated domestic abuse sessions."

The White Ribbon Campaign is a national campaign primarily aimed at men and boys. It encourages them to pledge that they will never commit, condone or remain silent about violence against women.

Chris Hunt, deputy headteacher at Culcheth High, said: "The sessions have

been well received by students and staff at our school. It has tackled a serious issue that has major implications for the lives of people involved directly and indirectly. "The sessions and assemblies have allowed our students to ask questions and investigate tough social, personal and emotional issues that surround domestic abuse. More importantly it has educated our students about what abuse is and where to go to seek help and advice if they need to."

Confidential help and advice is available by calling the Warrington Domestic Abuse Support Service on 01925 418 430. For more information on the WDAF log onto [www.warrington.gov.uk/domesticabuse](http://www.warrington.gov.uk/domesticabuse)

## MP opens nursery extension

A NEW extension at Culcheth Day Nursery was officially opened by Helen Jones MP.

Pictured from left, Helen with Emma Allen nursery staff, Deborah Byrne - Davies owner and Ellie Mai Logan aged 4 playing with the new sand box.



**Free Trial\***

**Begin your Kumon journey**

**Contact your local Instructor today for tailored maths and English study programmes.**

**Lowton Study Centre**

St Catherine's Church, Lane Head, Lowton.

Cath Muscroft **01925 225960**

[lowton@kumoncentre.co.uk](mailto:lowton@kumoncentre.co.uk)

**KUMON**

Developing independent learners

Fees vary. Please refer to your local study centre. \*Terms & conditions apply. Visit [kumon.co.uk](http://kumon.co.uk) for more details.

**\*Enrol your child between 1 February & 28 February 2011 for a two-week Free Trial and begin your Kumon journey.**

[kumon.co.uk](http://kumon.co.uk)



# Risley Day Nursery

Member of  
**NDNA**  
National Day Nurseries Association

**INVESTOR IN PEOPLE**

**Come and see why we will make your child's day special!**

At Risley Day Nursery, we understand what is important to both parents and children, and our aim is to provide the perfect solution to any parent looking for childcare for their little one. The nursery has an excellent reputation in providing a home from home environment enabling all children to feel confident and secure. So whether you are looking to return to work, moving area or whether you just want your child to have the best opportunities in their life, then come to Risley Day Nursery and see how we can help!

- ICT facilities in all rooms • Healthy and nutritious menus • All dietary requirements catered for
- Highest rating of 5 stars for the "Scores on the door's" food hygiene scheme run by the council
- Pre-school extra curricular activities including French lessons & PE
- Music and movement for all ages • Good Ofsted report • Bright and stimulating environment
- Large outdoor play area • Fully qualified and experienced staff • Early Years Professional
- Open 7.45 - 6.00pm 51 weeks a year • Ages 3 months - 5 years • Free trial sessions

Hidden extras include:

- High quality nappies and wipes • Sun hats, sun cream and pump bag
- Toothbrushes and toothpaste

**10% OFF**  
your first months fees when you book a place with us

**For more information or to arrange a visit, please call on 01925 828980  
Or alternatively visit our website [www.risleydaynursery.co.uk](http://www.risleydaynursery.co.uk)  
14/15 Delenty Drive, Birchwood, Warrington, WA3 6AP**

# Culcheth High - from on high!

**MICROLIGHT** enthusiast **Steve Grimshaw** spends quite a lot of his time high in the sky above the Culcheth area and likes to combine his flying with another interest - photography.

Steve, who now lives in Croft, was brought up in Culcheth and likes to take pictures of the area as he passes over.

The transformation of Culcheth High School has captured his attention recently and the result is this pair of pictures, one showing the new school (top right) and the other showing the demolished remains of the old (bottom right).

He said: "I spent a lot of my life in Culcheth and like taking photos of the area.

"It is such a shame the old school has been demolished.

"Personally I think the new school has about as much architectural flair as four shoe boxes - but that's just my opinion."



**Slimming**  
WORLD

because you're amazing

Save £10 plus 2 weeks free

**NEW VENUE**  
Village Club, Royal British Legion  
Wigshaw Lane, Culcheth  
Tel: 07922 869663  
Thursdays at 6.30pm  
Your consultant is Jackie

**PRIESTLEY**  
◆◆◆ COLLEGE ◆◆◆

**OPEN EVENING**

**THURSDAY 27 JANUARY 2011**

Principal's Presentation  
6.15pm & 7.15pm

**6pm - 8pm**

SUCCESS IS INFECTIOUS  
AT PRIESTLEY

**OUTSTANDING PASS RATES  
FOR 6 YEARS RUNNING**

\*\*\*\*\*

**THE INTERNATIONAL BACCALAUREATE**

Presentation  
6.45pm

DON'T MISS  
YOUR CHANCE TO CATCH  
THE FEVER

**APPLICATION DEADLINE  
FOR SEPTEMBER 2011 ENTRY  
15 FEBRUARY 2011**

LOUSHERS LANE, WARRINGTON  
01925 415415

For the latest information  
[www.priestley.ac.uk](http://www.priestley.ac.uk)

# Dining Out with Culcheth Life

## at The China Rose

MATHEW Tse has more than 25 years experience of preparing authentic Chinese cuisine - and it shows.

The China Rose, on Common Lane, Culcheth is his latest venture and it is immediately apparent to the visitor that this is no ordinary Chinese restaurant.

Mathew and his team of experienced chefs aim to provide quality food at reasonable prices and they do not disappoint. The staff are friendly and helpful and the restaurant is comfortable with a relaxing atmosphere.

Our visit started with hot and sour soup and chicken and sweetcorn soup, both of which were served piping hot and with prawn crackers. Delicious and particularly welcome on a cold winter's night!

For our main course we chose chicken filled breast with lemon sauce - an extremely tasty dish I had not sampled previously - and tender fillet

steak with Cantonese sauce. To these we added a generous bowl of stir fried mixed vegetables.

These were both beautifully cooked and presented but, sadly, left us unable to do justice to the dessert menu. We managed ice creams, however.

The China Rose also serves take-aways and the number of people calling in to pick up meals was further proof that word is spreading that Culcheth again has a quality Chinese restaurant.

There is a clear, concise menu that sets out the wide range of dishes available which, in addition to the usual Chinese dishes includes others such as Malaysian and from the Sichuan province of China. There are also a choice of banquets for parties of two or more people.

All in all, The China Rose is a welcome addition to Culcheth's enviable range of eateries.



## Anger over parking chaos

ANGRY residents are calling for action to stop parking chaos in Jackson Avenue, Thompson Avenue and other nearby roads at Culcheth.

Motorists are parking in the roads - often blocking residents' drives - because the car park in Jackson Avenue is taken up by shopworkers' cars, they claim.

Resident Jim Carr told Culcheth and Glazebury Parish Council he had been told shopworkers were being instructed to use the Jackson Avenue car park rather than the store's own car park.

"This means people come to shop in Culcheth and can't park," he said. Mr Carr questioned whether a park-and-ride scheme could be introduced for the village. He was told that park-and-ride was a borough council responsibility.

### carpe diem

WEB DESIGN, DEVELOPMENT & PRINT

Delivering creative web and print solutions since 1999, Carpe Diem have developed strong working relationships with clients of all sizes.

- UKTV, ASICS, Onitsuka Tiger, Transform Medical Group, Otelo, The Energy Ombudsman, Halle Orchestra, URBS

- Website Development
- E-Commerce
- Branding
- Print
- SEO / PPC / Marketing
- SMS / MMS / Email Campaigns
- Hosting
- DVD / Video Production
- Product Photography

T: 01925 299 842

F: 0871 434 5371

E: info@cd-inc.co.uk

www.carpe-diem.co.uk

60 High Street

Newton-Le-Willows

WA12 9SH

# China Rose

## Restaurant

*The Finest Chinese Cuisine*

Take Aways Available • Dining over two floors

Opening Hours: Monday - Closed

Tuesday - Thursday 5pm-11pm

Friday - Saturday 5pm-12pm Sunday 5pm-11pm

Telephone: 01925 765 806

23 Common Lane, Culcheth, Warrington WA3 4EW

All major Credit/Debit cards accepted

# DOOTSONS LLP

## We are here to help when relationships break down

We can also help in advising you prior to a new relationship on how best to secure your financial position in the unfortunate event it does not work out.

We have been providing legal services to Culcheth residents for over 25 years and have built a strong reputation in this sensitive area of law.

We will provide you with clear advice delivered in a down to earth way and will provide clear information about the cost of the work involved.

We can assist you with:

- Divorce
- Separation
- Property Disputes (married or unmarried)
- Civil Partnerships
- Children Disputes
- Change of Name
- Pre-nuptial agreements
- Financial agreements prior to living together

Contact us to arrange an appointment with **Michele Wright**

A first half hour free interview or fixed fee interview may be available – please ask.

**Free Car Parking For Clients**

**For all your legal needs  
CALL US 0845 330 5700**  
(calls charged at local rate)

**dootsons**  
SOLICITORS LLP  
working for you, working with you

23 Jackson Avenue, Culcheth  
CALLS AT LOCAL RATE  
**0845 330 5700**  
www.dootsons.co.uk

CULCHETH • LEIGH • ATHERTON

# Martyn's new li

**WHEN Martyn Woods developed epilepsy his whole life changed.**

He could not work, he could not drive and he was virtually housebound.

Understandably, he became depressed - particularly as his wife, Janet, was so busy running Pip, Squeak and Wilfred, the children's shoes and Christening wear shop in Lodge Drive, Culcheth.

But he fought back by using his time writing about 50 poems - some

for children and some for adults.

Eventually Janet suggested he try and get them published - and the result is two children's books which are now on sale in the village and elsewhere.

The first, "Percy", was written for their eight-year-old grandson, Zachary and the second, which is in a larger format, is titled "The Visitor."

Both books have been beautifully

## Church's new room is opened

CULCHETH Methodist Church's new Wren Room was officially opened by Richard Smith, of environmental group WREN on Victorian Day.

The room has been provided with the aid of a £15,000 grant from the group. Project manager at the church, Daphne Eastburn, said: "We really do appreciate this grant, which is why we decided to give this name to the room."

"The money was obtained through the Landfill Communities Fund of the Waste Recycling Group, administered by WREN."

The new room has made extra space available within the church building and can be used as an extension of the main community hall.

Mrs Eastburn said: "We have extended our community hall by adapting our quadrangle to make a conservatory-style meeting room."

"This space is energy efficient, improves our inside environment and achieves sustainability."



**NO VAT INCREASE!**  
ON ALL ORDERS WHILST STOCKS LAST

**PRICE MATCH GUARANTEED**

**LIVE WOOD BURNERS NOW ON DISPLAY**

FAMILY RUN BUSINESS  
TRADING OVER 28 YEARS

NO NEED TO CHANGE YOUR CARPET  
MADE TO MEASURE FIREPLACES  
WE HAVE ALL FLUE LINERS,  
CHIMNEY POTTS & CORNICES  
OVER 15 LIVE DISPLAYS  
OVER 2 FLOORS

Opening Times  
Mon-Fri 9.30am-4.30pm  
Sat 10am - 4.30pm - Sunday Closed

Tel: 01942 70 Twist Lane, Leigh, WN7 4DP  
607250 www.elbfireplaces.co.uk

## M. J. NEEDHAM LANDSCAPES

**Award Winning  
with over 15 years experience**

**All aspects of landscaping**

**Specialist in bespoke construction**

**Qualified design service available**

**01925 825645  
07888 730383**



# Life as an author

illustrated by Martyn himself and consist of amusing poems aimed at young children.

Several teachers have seen them and believe they have great educational value.

"Percy" tells the story, in rhyme, of a rather scruffy pelican who smartens himself up when he meets a girl Pelican, the moral being that if you really make an effort you can make friends.

"The Visitor" tells of a friendly dinosaur who moves in with a family and causes a few problems at the cinema, on a bus and at the dinner table. The moral is that all you need is imagination and some pen and ink to create a story.

Martyn writes under the pen-name "MrussellVV" and is now hoping for a new career as a published author.

His books are on sale at Pip, Squeak and Willfred and Forget-me-Not toy and book shop in the CPS Centre.



## The Gardening Guide January...



- Tools will benefit from sharpening & oiling to prepare for the coming season.
- New turf can be laid when the weather is mild. Stand on planks to avoid compaction.
- Keep up rooms humid for Houseplants by standing them on trays of moist gravel.
- Pots & bowls of Hyacinths, Daffodils, etc that have been outside may be given a little heat to encourage early flowering.
- Ensure protective straw & fleece is still in place on tender plants overwintering outdoors.

Happy New Year from Bents!



www.bents.co.uk

**oven**  
oven valeting service ...punctuality, pride, courtesy...

ovenу.co.uk

- Range & Aga Specialists
- Ovens & Hobs
- Extractor Hoods
- Microwave Ovens
- Traditional Stoves

LET US HELP - PHONE NOW  
01925 453377

the UK's favourite oven cleaning specialists

**Croft Riding Centre**

- Riding School Group/Private Lessons
- Novice/Advanced Riders
- Pony Club Centre

Learn to Ride & Keep Fit in our  
2 Indoor Arenas / Outdoor Arena  
& Country Course

Spring Lane, Croft, Warrington. WA3 7AS Tel: 01925 763715  
www.croftridingcentre.co.uk

**Frank Howard**  
SOLICITORS

**Facing a driving ban? Worried about points on your driving licence?**

Call David Robb or Gavin Tranter urgently to discuss your options

Frank Howard Solicitors offer:

- No obligation fixed fee quotations
- Friendly, straight forward advice

For a faster move, ring us today

✉ 10 Winmarleigh Street, Warrington WA1 1NB  
☎ 01925 653481  
@ mc@fhsolicitors.co.uk

✉ 25 Haydock Street, Newton-le-Willows WA12 9AD  
☎ 01925 221321  
@ mc@fhsolicitors.co.uk

**THE ONE AND ONLY Sale**

*But hurry, only while stocks last.*  
**Save up to 50% across the store.**

Christmas Decorations  
Christmas Trees and Lights  
Planters, Garden Gifts and Furniture  
Fashion and Gifts

**bents**  
For beautiful living

Bents Garden & Home, Warrington Road, Glazebury, Nr. Warrington WA3 5NT  
Tel 01942 266300. From Mon 27th OPEN 8.30am-5.30pm on Weekdays and Saturdays (Closed New Year's Day). OPEN 8.30am-5pm on Sundays.  
bents.co.uk



Coun Campbell (centre) with her husband Coun Paul Campbell and their granddaughter Simone.

## £2,270 raised for hospice

**A CHARITY night held in Culcheth raised £2,270 for Claire House Children's Hospice, Wirral.**

Culcheth and Glazebury Parish Council's chairman's Charity Night was organised by chairman Coun Helena Campbell and held in The Village Club/Royal British Legion.

Coun Campbell said the hospice costs £2 million a year to run and

depends totally on fundraising events and public donations. A quarter of the beds are taken up by people from Warrington.

She thanked everyone who had supported the event and said a cheque for the amount raised had been given to the charity.

## Waste firm told: You've got 12 months!

**ANGRY** councillors have told waste disposal company Biffa they have just 12 months to complete tipping at Risley landfill site.

Planning officers told the borough council's development management committee there was "no alternative" to granting permission for an extra 18 months tipping at the site in Silver Lane - despite the fact the work should have been completed in October.

But councillors decided otherwise. Nearby residents, who have had to put up with noise, dust and smells from the tip for years, should not be expected to endure it any longer than necessary, they said.

Biffa will, however, still be allowed another year to restore the site.

Thirty residents - some from Culcheth - opposed the company's application for more time to complete tipping. There were also objections from Culcheth and Glazebury Parish Council, Croft Parish Council and Birchwood Town Council.

Main grounds for objecting were a loss of amenity, noise, smells, traffic, etc.

The company blamed the recession, loss of waste contracts and increased recycling which had resulted in less waste materials being produced.

Planning officers said there was no alternative to granting an extension of time to complete waste disposal and restoration operations.

They argued that existing slopes were too steep to permanently cap and restore and any re-grading work would result in removal of previously deposited waste with an impact on landfill gas management, increased smells and a need to remove waste from the site.

**P.E.T.S. ANIMAL HOTEL**  
Setting New Standards in Animal Care

- Hotel style living for your pets
- State of the art grooming salon
- Behaviour and training management
- Reliable dog walking and home care visits
- Unique, purpose-built indoor and outdoor Doggy Day Creche
- Pick up and delivery service

Viewings welcome  
To arrange a tour please ring Fran Jennings on  
**07792 756 545 or 01925 750418**  
27 Burford Lane, Lynton, Cheshire WA13 0SH  
[www.petsanimalhotel.co.uk](http://www.petsanimalhotel.co.uk)



## Frodsham Business Centre

Bridge Lane, Frodsham, WA6 7FZ



**Easy Access To/From The Motorway**

**Just off M56 Junction 12**

**Office Suites Available**

- Sizes Starting From 250sq ft • Other Sizes Also Available
- Wide Range To Choose From • Short & Long Term Licences



For more information

**Tel/Fax: 01928 733151**

[www.frodshambusinesscentre.co.uk](http://www.frodshambusinesscentre.co.uk)

# WI members defy the weather

**DREADFUL weather did not deter a good turnout at Croft WI's annual meeting and president Doreen Clare welcomed new member Merron Mitchell.**

The meeting was told a trip to The Magic Flute in Liverpool had been enjoyed by all who went.

Eight members had also attended the Federation's 90th birthday service at Chester Cathedral - a trip which also included a spot of shopping!

Members are now looking forward to further trips in the New Year, the first being Blood Brothers at the Lowry in February.

Several members have been taking part in a beginner's computer course hosted by staff at Croft Primary School. Intermediate classes follow

in the spring.

The proceeds of last month's raffle have been given to St Rocco's as well as a donation of £200 in total.

Following the appointment of five new committee members and a unanimous vote for Doreen to continue as president, members tucked into a supper provided by fellow member Judie Leah. This was followed by a cookery quiz organised by Pam Schofield. Winners of the competition for an antique piece of jewellery were Doris Friar, Nicky Adams and Jill Hillam.

The next meeting is on January 19.

## 'Deadly's' quiz raised £1,941

ALAN 'Deadly' Dedicat - BBC TV lottery show's 'voice of the balls' was in 'deadly' form when he returned to Culcheth to host the annual quiz night to raise money for Children in Need.

He had to battle through atrocious weather travelling from southern England for the event at the British Legion Village Club.

There was a guest appearance by Pudsey Bear, providing plenty of photo opportunities for all - and the evening raised a total of £1,941.75.

As usual, the event was organised by Elaine Durrington who joined "Deadly" in sending thanks to all who attended and for generous donations.



## Reader's Letters

Please send your correspondence to:  
Culcheth Life, New Media Centre, Old Road, Warrington WA4 1AT  
or email: info@culchethlife.com

### A plea from the heart Chris Perera, British Heart Foundation

February is National Heart Month and I am asking you to help the British Heart Foundation fight the UK's biggest killer by organising a red event this February.

It's so easy to get involved with Red for Heart. You can join National Wear Red Day on Friday February 25 or choose your own fundraising event - anything goes as long as it's red! All you need to do is order your free fundraising kit at [bhf.org.uk/red](http://bhf.org.uk/red) or call 0845 241 0976.

There's never been a better time to join the celebrations and get involved in Red for Heart as the BHF celebrates their 50th birthday in 2011. So please join me and 'Be a part of Red for Heart' this February - because together we can save the life you love.

### Close monitoring Chris Vobe, Culcheth

Dear Editor, Roger Rankin speaks in last month's edition of *Culcheth Life* on behalf of Culcheth and Glazebury Parish Council to call for 'close monitoring' of the landfill site at Risley.

The audacity of his statement is staggering! This might be apt opportunity to remind him that it is actually his Conservative colleagues who run the Town Hall, amongst them two of Culcheth and Glazebury's parish councillors.

While it's heartening that Mr Rankin has finally caught up with the rest of the village, he might like to turn his attention a little closer to home first! The failure by Cllr Keith Bland, in his role as Warrington Council's Deputy Leader to properly monitor the situation at Risley speaks volumes. If this is a genuine plea from Cllr Rankin, then it is time Keith Bland stepped up to the plate - actions do, after all, speak louder than words.

# Fabulous flooring at fantastic prices

Throughout January we have some fantastic offers at the main warehouse with over 50 rolls and part rolls now in stock. **Many at clearance prices!**

## Special January Offer!

### 10% off Polyflor

As beautiful and practical as Karndean, Polyflor luxury vinyl tiles are renowned worldwide for their durability and value. Stunning ranges now on display to view.

Terms and conditions apply.



**POLYFLOR**  
LUXURY VINYL TILES

If you love the thick plush pile of a Saxony carpet and are considering one for your home, local carpet expert Craig Bennett strongly advises polyester for its superior pile retention.



Call into Lowton Carpets and Home to check out our very special ranges now on offer including **polyester Saxony now HALF PRICE at only £14.99m2 (RRP £28.99 m2)**. Especially brought in from Mexico, it is ideal for lounges, hallways, bedrooms. This is just one of the many great offers in store through January.

Call in, take a look and get friendly, expert advice on the best carpet or flooring to suit your needs.

## Need a new bed?

**WE DELIVER FOR FREE**

**ASSEMBLE FOR FREE**

**GIVE YOU A NEW QUILT AND PILLOWS FREE**

**AND REMOVE YOUR OLD BED FOR FREE**

# 50% off ALL beds

## LOWTON CARPETS & HOME

THE AREA'S PREMIER INDEPENDENT SUPPLIER OF CARPETS, VINYL, LAMINATE FLOORING, BEDS, KITCHEN WORKTOPS & CUPBOARD DOORS.

# Call 01942 716769

Lowton Carpets & Home  
35-37 Golborne Road, Lowton

Motoring

# Roadside killers!

**THERE is nothing more attractive than a tree-lined road.**

But behind the leafy beauty hides an alarming statistic - one in 12 UK road deaths involves a collision with a tree.

Research by the AA has revealed that in 2009 there were 175 fatal accidents involving vehicles striking trees - eight per cent of all road deaths.

Unlike road deaths in general, which have fallen by 35 per cent since 2000, fatal tree accidents have fallen by only 18 per cent.

The unforgiving nature of collisions with trees meant that, in 2009, four times more motorists were killed after hitting a tree than were killed after crashing into a lamppost. In a sample of 10,000 car insurance claims, about 1 per cent involved collisions with trees.

In rural areas, the death rate from vehicles hitting trees runs at 12 per cent, or just over one in eight road fatal accidents along non-built-up roads.

Tree-related fatal accidents steadily increased from 214 a year in 2000 to 272 in 2006, but have fallen since. Fatal accidents with lampposts during the same period have nearly halved, from 77 in 2000 to 41 in 2009.

Andrew Howard, the AA's head of road safety, said: "Too many drivers just don't understand that trees are among the most unyielding roadside objects. Trees hit by cars often show

little or no sign of even the most severe impact.

"Consequently, trees have been the nemesis of extreme driving - hit one at speed and you and your passengers will be lucky to escape alive. Too often, when a driver speeds, makes a bad judgment and leaves the road, it is a tree that stops the vehicle in its tracks.

"In recent years, moving lampposts

back from the kerb and making signs and other man-made street furniture less 'hard' have significantly reduced casualties.

"However, trees, some with preservation orders and often immovable from the roadside, present a threat where the only defence is speed limits and road markings that try to influence driver behaviour."

## MOT changes

VEHICLES may soon not need an MOT certificate until they are four years old.

At present, a vehicle has to be tested when it becomes three years old and then re-tested annually.

But the government is considering switching to four-year-tests, with re-tests every two years thereafter.

## A new motor show



A NEW motor festival is to be launch in March, promising three unforgettable days for all-comers to indulge in the continuing love affair between the British people and the motor car.

The first British Motor Festival is to be held at the Royal Windsor Racecourse, Berkshire, on March 11-13 and will run alongside the annual British Leisure Show, which attracted more than 21,000 visitors last year.

Event managing director James Brooke (pictured) said: "The new British Motor Festival has been designed to provide visitors with entertainment, interaction, education, hospitality and a unique display of new and classic cars and motorcycles at a prestigious venue.

The Royal Windsor Racecourse provides the perfect setting for purists to enjoy their passion, at a time when manufacturers and dealers are looking to engage with new customers. It's a great value family day out, and visitors can enjoy two exciting events for the price of one!"

Features at the event include a Formula 1 simulator and a stunning display of Owners Club cars.

Headline exhibitors already confirmed for the new British Motor Festival include Rolls Royce Motor Cars Sunningdale, Morgan, Caterham, Squire Furneaux Volvo, Citroen Slough, Subaru, Isuzu, Triumph, Tesla Motors, Get On, Royal Enfield and Harley Davidson.

There is free entry for children under 16, free parking and easy access from all over the country via the M3, M25 and M4.

For more information visit [www.britishmotorfestival.com](http://www.britishmotorfestival.com)

The entry fee will also cover the British Leisure Show ensuring it will be a day out for all the family.

## Want to save money?

### Join the club!

(over 350,000 people already have)



**94% OF CUSTOMERS SAY THEY'D RECOMMEND US TO A FRIEND**

- ✓ Guaranteed savings!
- ✓ Save 25% on your household bills
- ✓ Award-winning customer service
- ✓ Which? Best Buy - Phone and Broadband Bundles Feb 2010
- ✓ UK's cheapest line rental
- ✓ Free Global Calls\*
- ✓ 'Triple Value' guarantee on gas and electricity
- ✓ Cheapest online shopping
- ✓ 1000's of High Street retail partners
- ✓ Earn CashBack on shopping and petrol

For full details contact:

**0800 955 5247**

New Media Centre, Old Road, Warrington WA4 1AT



\*Cheques, fees and conditions apply. See [www.heartclub.co.uk](http://www.heartclub.co.uk) for full details.

**TRUCKS2GO**  
The Commercial Vehicle Specialists

---

YOUR LOCAL SUPPLIER OF QUALITY COMMERCIAL VEHICLES

TRUCKS
VANS
PLANT
TRAILERS

365 Warrington Rd, Culcheth, Cheshire. WA3 5JQ

Tel: 01925 766527

Email: [sales@trucks2go.co.uk](mailto:sales@trucks2go.co.uk)

**SALES - CONTRACT HIRE - RENTAL**

Visit our 'NEW 3 ACRE RETAIL SITE' based in Culcheth.

Whatever your requirements from a small van to a fleet of trucks (new or used) or any specialist vehicles. Trucks 2 Go Ltd can locate or bespoke build the right vehicle for you.

Feel free to call anytime, a member of our staff will be glad to help.

**www.trucks2go.co.uk**

**styles** and co  
chartered accountants

- Tax Planning
- Corporate Finance
- Audit & Accounts
- Management Accounts
- Business Development
- Business Sales & Acquisitions
- Forensic Accounting

**Heather House,  
473 Warrington Road,  
Culcheth, Warrington,  
WA3 5QU**

**Tel: 01925 761600  
Fax: 01925 761601**

**Email:  
mail@stylesandco.co.uk**

**THE STYLES FILES** styles and co  
chartered accountants

## Pre-Year End Tax Planning

The completion of your 2009-10 tax return and the payment of any tax due by 31 January 2011 may now be fading from your memory, but you should not consider that to be the end of the matter for another 12 months!

Ultimately, tax planning should be a continuous process focusing on an individual's needs and circumstances. As proactive tax advisers, Styles and Co ensures that tax planning is not just an annual review and where possible, should take into account an individual's family as a whole, looking at the requirements of family members, and the resources available, including family trusts and companies.

The period leading up to the end of the tax year (5 April) is a key time for doing those last minute tax planning chores you may have been putting off. You may be surprised at how much tax you could save by devoting a little time and effort to this matter.

With this in mind, what tax planning issues should you be thinking about at this time? A large part of the exercise will be to make sure you are fully utilising your personal reliefs and allowances. For example:

- If you have not utilised your CGT annual exemption (currently £10,100) then you could consider realising capital gains up to this amount so that they are in effect tax-free. Equally, do you have any unutilised capital losses or other asset that you know would realise a capital loss (typically investments in stocks and shares) so that it can offset the

- gain.
  - Pension planning should also be considered and whether it is appropriate to make any further pension contributions for you or your family members. Remember that pension contributions qualify for tax relief and payments up to £3,600 (gross) can be relieved irrespective of the level of earnings.
  - Income received within an individual's personal allowance is tax-free. It would not be unusual for the spouse of a self-employed person to assist in the running of the business and receive a salary that may be within the personal allowance.
  - Individual Savings Accounts ("ISAs") can be a tax efficient way to invest savings. There are limits on the amounts an individual can invest in an ISA in each tax year, so you should consider whether or not you have fully utilised your annual limit.
  - For inheritance tax purposes, you also have an annual exemption for gifts of £3,000, as well as an exemption for small gifts of up to £250.
- If you would like any assistance in reviewing the above or any other tax planning matters, please contact Les Styles or Graeme Hindley at Styles and Co on 01925 761600.



**If you would like more information on this or any of the previous subjects we have featured, please contact Les Styles or Ian Lloyd on 01925 761600.**

**The Styles Files are provided by Styles & Co  
473 Warrington Road, Culcheth, Warrington WA3 5QU**

**For further details please telephone 01925 761600  
or visit our website at www.stylesandco.co.uk**

**PREMIER SALE**  
**+NO VAT INCREASE**  
ON JAN/FEB ORDERS

## Warrington's Only Bespoke Kitchen Company

DESIGNED & HAND BUILT FOR YOU! - EST. OVER 40 YEARS

HUNDREDS OF RETURNING CUSTOMERS CAN'T BE WRONG!

New Lucida Block

SAVING YOU up to **20%**

New Delaware Kitchen

IVORY

New range of BATHROOMS

**BUSHBOARD**  
the latest in Paneling.

Beautifully fitted bathrooms from start to finish

2 YEARS INSTALLATION GUARANTEE

900 Quad Shower Inc. Tray

SALE PRICE **£299**

Chrome 900 Shower with pivot door inc. Tray

SALE PRICE **£239**

Range of High Gloss Vanity Units

SALE PRICE FROM **£99**

White High Gloss Back to Wall Unit inc. basin, cistern, seat & pan

IN STOCK TO TAKEAWAY! **£299**

Cash & Carry Kitchens

Over 20 on display from \$499 to \$999

SAVING YOU OVER **50%**

Bedroom Sale Now On!

See our New RAUCH BEDROOMS Just in SCAE FRENCH COLLECTION

Wood Burning Fires & Stoves

From **£259** Over 100 in stock!

Full installation Service by expert fitters!

900mm Column Built In Fridge Normal Price £339 Now **£159**

VISIT OUR BARGAIN BASEMENT FACTORY OUTLET!

Huge selection of wall & base units in assorted sizes from \$15 each  
Oak finished glazed doors mainly large sizes- Without glass \$10 each or with leaded glass doors \$15-£20 DISCOUNTED PRICES FOR BULK QUANTITY.

NEW MISTRAL SOLID SURFACE WORKTOPS

20% OFF

Choice of colours OVER 500 TOP NAME WORKTOPS IN STOCK!

01925 633 291

Fax: 01925 417 585

Public and Trade Welcome

The Old Tannery Building, Manor Ind Estate Lower Wash Lane Warrington WA4 1PL  
Off Grange Avenue, Latchford. Next to ATS.

www.raddoncourt.com

OPEN 7 DAYS:  
Mon-Fri 9am-5.30pm  
Sat 9am-5.30pm  
Sun 10.30am-4.30pm

Closed: Bank Holidays, Christmas Eve 23rd, Boxing Day 26th, & New Years Day

SAVE OVER 20%

Replacement doors & handles

Raddon Court Warehouse

RADDON COURT

WARRINGTON TPL

# Shop Local

Welcome to our special feature which is aimed at encouraging our readers to support local businesses. Any local business wishing to feature in future editions please contact us on 0800 955 5247. Please mention this publication when responding to an advertiser.

**PARKVIEW**  
Centre  
Health & Fitness Solutions  
**Sports Massage**  
**Rachel Farrington**  
MIGHT, IIST & FHT Member

**Do you have Aches & Pains? Then come and see me**

Advanced Body Massage • Swedish Massage  
Management of Injury • Chronic Injury  
Back & Neck Tension • Deep Muscle Tissue  
*All walks of life treated*

Park View Centre, 21 Common Lane, Culcheth, 01925 762404  
www.parkviewcentre.co.uk

*Genesis Shoes*



**Our Genuine Winter Sale**  
starts Wednesday  
29th December

Tel: 01925 762463  
60 Lodge Drive, Culcheth, Warrington WA3 4ER  
www.genesisshoes.co.uk

## Support and Recovery from Broken Marriages and Partnerships

A weekly programme for anyone hurting from broken relationships

**Every Monday 7.30-9.30pm**  
(except during school holidays)

Culcheth High School, Warrington Road,  
Culcheth WA3 4HH

For more information contact Merrily on  
07889 214671 or  
email merrilyfr@googlemail.com

**Sponsored by Grace Fellowship Church**

**HI HUNTER HEALEY**  
CHARTERED ACCOUNTANTS

- Professional, approachable, affordable
- Accounts preparation & tax returns for individuals & companies
- Bookkeeping, payroll & vat
- Capital gains & inheritance tax planning
- Business start up advice
- First meeting free of charge

Call Nigel Healey now on 01925 767222  
Abacus House, 450 Warrington Road, Culcheth WA3 5QX  
www.hunterhealey.co.uk

**Ye Olde Curiosity Shop**



**We Buy and Sell**  
**Gold and Silver**



**Top London Prices Paid**  
for scrap or broken gold & silver jewellery

Also Wanted:  
Antiques & Collectables • Ornaments (Nao, Liadro, Coalport, Doulton)  
Watches • Medals

If you would like our buyer to call at your home  
contact John on:

**01925 762 612 or 07882 547 303**

Any Amount • Cash Paid Same Day  
CPS Centre (above Sainsbury's) | 7 Common Lane  
Culcheth | Warrington | WA3 4EH

twentyfourseven  
design and print ltd



## Special Offers

- 500 Full Colour Digital Business Cards **£35.00**  
(Buy 1 set, Get 1 set free!)
- 100 A3 Full Colour Posters **£38.00**
- 500 A6 Full Colour Double Sided Flyers **£50.00**
- 10,000 A5 Full Colour Flyers **£248.00**  
(Pay for 1 side, Get the other printed for free!)
- 60" x 40" Full Colour Posters **£12.00**

Subject to VAT where applicable

**t. 01925 240 247 e. info@247print.net**

a. The New Media Centre, Old Road, Warrington, WA4 1AT

**CLASSIFIED**

**Advertising: 0800 955 5247**

**ACCOUNTANCY & BOOKEEPING**

**APPEGATE & CO LICENSED** and regulated by the AAT to engage in public practice in Accountancy, Book-keeping, Payroll, VAT, Self Assessment. **Tel: 01928 739996/07803 218343. 2 & 8 Collinson Court, Frodsham WA6 7PN.** (08/11)

**BATHROOMS**

**CARPET CLEANING**

**A1 STAINBUSTERS:** Fully guaranteed carpet and upholstery deep dry cleaning. Clean and dry in only ONE hour. Quotes for both commercial and domestic. Contact the Local expert **John Latham FREE on 0800 137772 or call 07765 314080** (04/11)

**SAFE CLEAN: SAFE ORGANIC CLEANING.** Specialists in cleaning all leather and fabric upholstery, rugs, carpets and curtains in situ. Ask about our new organic allergy relief system, Guardsman stain protection plans and carpet repairs. **Call Carey Randall on 01925 815724** (04/11)

**SIMPLY THE BEST CARPET CLEAN YOU WILL EVER** have. Cleaners UK Ltd. Est 23 yrs. Have your carpets & sofas beautifully deep cleaned leaving them fresh smelling & colour restored. Latest & best methods. Dry/Steam. Professional, reliable & affordable. **Call Neil Riley on 01925 264989/07831 336060** For more information [www.cleaners-uk.net](http://www.cleaners-uk.net) (12/11)

**CHIROPODY**

**KATHRYN GRACE AND ASSOCIATES,** D.Pod.M, M.Ch.S., HPC registered Chiropractors/Podiatrists, 25 years experience, offering friendly and professional footcare, also Gait Analysis. Care home contracts are welcome. Culcheth based. **Tel 01925 762404 www.parkviewcentre.co.uk** (12/11)

**CLEANING SERVICES**

**CLIMATE CONTROL**

**CLIMATE CONTROL BY WARRINGTON** based 4 Seasons, for offices, shops, surgeries, schools, homes and conservatories like yours! Installed in a day guaranteed 5 years. Keeping you cool when it's hot and warm when it's not. **www.4sac.co.uk 01925 868960** (06/11)

**COMPUTERS**

**AED COMPUTER SERVICES.** For all your PC servicing requirements including: Hardware repairs /upgrades, Software / Operating System re-installs, Virus removal, basic training: **Tel: 01925 766426, mobile: 07870 260657, email: enquiries@aed-cs.com, Web: http://www.aed-cs.com** (04/11)

**COUNSELLING**

**CONSIDERATE COUNSELLING** and Hypnotherapy Service has qualified therapists who offer sessions in a safe, secure and confidential environment, **phone 0161 776 9961 or email susan.eatonval@yahoo.co.uk** (08/11)

**DELIVERY SERVICES**

**FURNITURE FERRY LIGHT REMOVALS.** Collections arranged from Ikea, Costco and other stores, garden centres, auctions etc. You choose, you buy, I deliver - SIMPLE. Reliable, inexpensive service. **Tel: Matt 07970 178 333 or 01942 732768. www.furnitureferry.co.uk** (05/11)

**TnM Couriers** - specialists in urgent UK same day deliveries, international and UK next day services available, contract work undertaken, parcels to pallets, no job too small or too big, competitive rates. **Call 01925 639029.** (06/11)

**DRIVING TUITION**

**ELECTRICAL CONTRACTORS**

**A1 ELECTRICAL SERVICES PAUL LEWIS.** For extra sockets/lights, main board upgrades to full rewires, no job too large or small. No call out fee. All work guaranteed. **Tel 01925 758337 or 07966 386806. Est 23 years.** (06/11)

**EVERGREEN ELECTRICAL CONTRACTING, NICEIC** approved contractor. For lights and sockets to rewires, fuse-box upgrades. Qualified electrician. All work is to the latest IEE wiring regulations. No job too small. Most major credit and debit cards accepted. **Tel: David on 01925 724219 / 07971 407022.** (06/11)

**FIRES & FIRE SURROUNDS**

**GARDENING SERVICES**

**LAWN DRAINAGE AND SOIL AERATION.** No trenches, no drainpipes, no digging, no repairs, no hassle. If this interests you **Contact Bob Harper 01925 266852 or 07952 608701.** (03/11)

**M J NEEDHAM LANDSCAPES** Award winning with over 15 years experience. All aspects of landscaping, specialist in bespoke construction. Qualified design service available. **Contact 01925 825 645 or 07888 730 383** (03/11)

**GATES**

**GROUNDWORK**

**HANDYMAN**

**LOCAL HANDYMAN** for all those jobs you cannot get anyone to do. House maintenance, flat pack assembly, fence repairs etc. No job too small. **Phone Peter on 01925 762 645 or 07523 419 216.** (04/11)

**HEALTH**

**CL JONES LCSP (PHYS).** Remedial massage and clinical hypnotherapist. Now back above Sainsburys. **30 Sundial House, Common Lane, Culcheth. WA3 4EH. Call 07845 473467 day 01925 767979 eve.** (03/11)

**HOME IMPROVEMENTS**

**HOUSE SHARE**

**HOUSE SHARE EMPLOYED - NON SMOKER** wanted to house share in Culcheth with young male professional. £350 per calendar month plus bills. The house is a beautiful character property, 3 beds and comfortable living space. References will be required. **Telephone 01925 768910 and ask for Matt Streets** (08/11)

**IRONING SERVICES**

**PAINTING AND DECORATING**

**LOCAL PROFESSIONAL PAINTER** and decorator. Domestic and commercial work, competitive prices, free quotes and advice. NVQ and City and Guilds qualified. **Call Micheal Caldwell to discuss. 01942 682735 or 07908 089760.** (03/11)

**PAYROLL**

**WHY TRY TO BE A PAYE EXPERT?** Watkinson Black can provide a cost effective payroll service, releasing you to concentrate on your business. **For further details please phone: 01925 413210 or e-mail: info@warringtonaccountants.co.uk** (06/11)

**ROOFING**

**APEX ROOFING.** Roofing repairs & complete replacement. Built up flat roofing, Slating, Tiling, Fascias, soffits and gutting Free quotes, references available. **Tel: 0781 488 0246.** (03/11)

**TUITION**

**SPANISH LESSONS IN CULCHETH** Daytime tuition in Spanish grammar for adults - beginners or revision. Experienced retired tutor; friendly relaxed lessons for singles or couples. **Tel 01925 765 962 or Mob 07922 155 275** (04/11)

**TREE SURGERY**

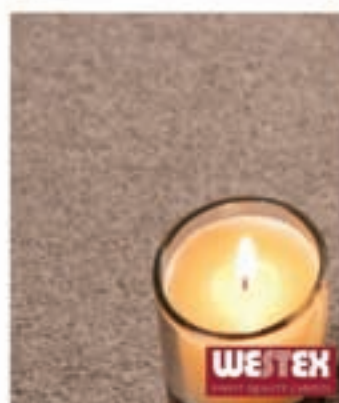
**R&R TREE SERVICES** Local business. Trees felled and pruned, hedges cut and shaped, conifers a speciality, turfing and fencing, all waste removed. Licenced and insured. **Contact Robert on: 01942 673736 or 07811 954 065** (02/11)

**WINDOWS & GLAZING**

**LEIGH GLASS LTD FOR ALL OF YOUR GLASS** requirements please contact **Tel 01942 678440 Fax 01942 261728 email leighglass@hotmail.co.uk** (01/11)

**SJ HESKETH WINDOWS.** Failed and misted double glazed units replaced. UPVC windows and conservatories. Soffits, fascias and guttering. All aspects of building work. Fensa Reg 18048. No job too small. Ask for Steve. **Tel 01942 523538. Mobile 07767 828363.** (04/11)

**SP GLAZING** for all your glazing requirements, double glazed units including failed and misted units, broke windows, mirror fixing. Kite marked to B/S. Time served glazier with over 30 years experience. **For a friendly no obligation quote tel Sam Pendlebury on 01942 671859. Mob 07919 660296.** (04/11)



## GOLD SERVICE AVAILABLE

- Moving of furniture
- Removal & disposal of old carpet
- Expert fitting service
- Vacuum new carpet
- Move furniture back into position
- Shave doors if needed
- Please ask for further details



**10% OFF WITH YOUR LOYALTY CARD, FREE INSTORE**

**Stones Carpets** *where good quality & service never go out of fashion*

77/77 Chapel Street, Leigh, WN7 2DA | Monday - Saturday 9-5 | Sunday 11-4

**FREE PARKING TO THE REAR | [www.stonescarpets.net](http://www.stonescarpets.net)**

**01942 682292**

Only 5 Minutes from Bents