

Culcheth Life

FREE EVERY MONTH

Issue: 119
February 2013

Dootsons
Family Law Specialists

See main ad
Page 8

23 Jackson Avenue
Culcheth
0845 330 5700

CULCHETH • CROFT • GLAZIER LANE • BIRKBECK BROOK • LOWTON • WINWICK AND SURROUNDING AREAS

**Mountain trek
in memory
of friend**

Page 3

All the latest news: www.culchethlife.com

Gas Cylinders UK Ltd

The Northwest leading gas supplier

Patio, BBQ, heating,
refrigerant and welding gas.

Free delivery
within 15 miles of depot

340 Haydock Lane,
Haydock Ind Estate, WA11 9UY

0800 195 1313

Order Online:
www.gascylindersuk.co.uk

Core
Tuition Limited

**Expert Tuition
English & Maths**

Tel: 01925 733954

info@coretuition.com
www.coretuition.com

**The
Dress
Studio**

See our main ad
on the back page

Tel: 01925 766258
The Warehouse Studios, Glaziers Lane,
Culcheth, Warrington, WA3 4AQ

Editor
Gary Skentelbery

Production
Paul Walker

Advertising
Freephone
0800 955 5247

Editorial
01925 623633

Email
info@culchethlife.com

Websites
www.culchethlife.com
www.frodshamlife.co.uk
www.lymmmlife.co.uk
www.warrington-worldwide.co.uk
www.warrington.tv

Address
New Media Centre
Old Road Warrington
WA4 1AT

Culcheth Life is published monthly by Orbit News Ltd.

The contents of this magazine are fully protected by copyright and nothing may be reprinted or reproduced without prior permission of the publishers.

The publishers are not liable for any statement made or opinion expressed by third parties in this publication.

Printed by TwentyFourSeven

Editor's Comment



It would appear the proposals for a High Speed rail network could have a significant impact on Culcheth - without any of the benefits.

While the proposals are probably 20 years down the line, now is the time to voice our concerns as the route of the super fast high speed network appears to go through

Culcheth Linear Park - and with no stops planned in the Warrington area, there can be no benefits for local residents.

I understand the proposals are only in draft form, so no doubt there is an opportunity to have them changed.

I know local MP Helen Jones is campaigning to ensure any impact on

the area is lessened and is following the progress of the project very closely, to see whether the Coalition government listens to concerns.

But a lot can happen in 20 years - including a change in Government!

Whatever happens we will do our best to keep local residents informed.

WI members in serious mode

MEMBERS of Croft WI were in serious mode when speaker Philip Clegg gave a talk on wealth preservation to safeguard the family inheritance.

Mr Clegg - director of an independent company specialising in wills, Trusts and Lasting Powers of Attorney, explained the pros and cons of making the correct type of will.

He also spoke on ways of legally avoiding inheritance tax and how to protect assets being swallowed up by care fees in old age.

He lightened his talk with examples of strange requests incorporated into wills made in the past. William Shakespeare left his wife his second best bed and Harry Houdini stipulated that his wife must hold a séance on every anniversary of his death, just in case he could make contact!

A question and answer session

was greatly appreciated and a vote of thanks was given by president Doreen Clare.

A competition "A Family Heirloom" was won by Sue Birchall.

Croft WI will celebrate its 60th birthday with a party on February 20 and on April 11 a theatre trip to see "Cats" is being arranged.

Copy deadline for the March issue of Culcheth Life is February 19

Financial Problems?

Commercial or Personal

For bespoke solutions contact local specialist

Roger White, MICM

For FREE Initial Advice

Strictly Confidential

01925 762497 or 07946 820299



Campbell Crossley & Davis
LICENSED INSOLVENCY PRACTITIONERS

FAB PHOTO SHOTS Culcheth's Photographic Studios

FAMILY PORTRAITS - LARGE FAMILIES WELCOME
Photos taken in all family combinations & single portraits too!

BUMP TO BABY - BABIES 1ST YEAR - MODELLING PORTFOLIOS
CORPORATE HEADSHOTS - OUTDOOR (ONSITE) PHOTOGRAPHY

Pop in and discuss your requirements!
Competitive Prices!

Memories to treasure forever - Tel: 01925 767884
FAB Photo Shoots, The Warehouse Studios, (Near Black Sheep Crafts)
Glaziers Lane, Culcheth, Warrington WA3 4AQ
www.fabphotoshoots.com | info@fabphotoshoots.com

culcheth tyres and autocentre

01925 766380 / 766987

Servicing, Engine Diagnostics, MOT Preparation & Presentation
Your Local Autocare Centre

ANY MAKE, ANY SIZE, ANY VEHICLE
UP TO 40% CHEAPER THAN THE HIGH STREET

FREE Break Safety Checks
Tyre Pressure Check & Inflation
Wheel/Alignment Checks **FREE**

Tyres, Brakes, Batteries, Exhaust, Puncture Repairs,
Steering, Suspension, Alloy Wheel Repairs & Refurb

Free Local Collection & Delivery
Unit 1D Taylor Business Park, Warrington Road, Risley, WA3 6BL

Want to lose upto 2 dress sizes without dieting or surgery?
Non Surgical Laser Lipo is the answer!
Instant result, non invasive & painless

Sculpt
med lipo

Book your **FREE** consultation now! **01925 601761**
Special offer £25 trial session. 165 London Rd, Stockton Heath

MARBLE FIREPLACES & FIRE FITTED From **£995**

Is your conservatory too cold to use in Winter?
Why not install a stove?

PRICE MATCH GUARANTEE

FAMILY RUN BUSINESS TRADING OVER 28 YEARS
- NO NEED TO CHANGE YOUR CARPET
- MADE TO MEASURE FIREPLACES
- WE INSTALL ALL FLUE LINERS
- CHIMNEY POTTS & TOPPERS
- OVER 10 LITE DISPLAYS OVER 2 FLOORS

LIVE WOOD BURNING STOVES
LARGE SELECTION ON DISPLAY

Opening Times:
Mon-Fri 9.30-4.30pm
Sat 10am - 4.30pm - Sunday Closed

www.elbfireplaces.co.uk
70 Twist Lane, Leigh, WN7 4DP
Tel: 01942 607250

RETAS **ELB** **interior** **elite**

Graeme's mountain trek in memory of friend

A FORMER Culcheth High School pupil flies out on February 16 to tackle the world's highest free-standing mountain - Kilimanjaro.

Graeme McIver, 26, will climb Africa's highest mountain in memory of Culcheth resident Mark Sinclair who died from leukaemia last year, aged 47 – and also to raise money for the Anthony Nolan Trust.

Graeme – a financial adviser – lived in Culcheth from the age of five, played for Culcheth Athletic FC and was a Scout in the village. He now lives in Walton with his partner, Kirsty.

His parents, Paul and Pat, still live in Culcheth and Mark and his wife, Susan, were family friends.

Now Graeme – with Susan's support – is raising money for the charity, which raises money for people suffering from blood cancers.

Graeme said: "Although I like to keep fit and play 5-a-side football, I have never taken on a challenge like this.

"But I am training hard, in the gym and outdoors. I've done plenty of training walks, including Helvellyn and Scafell Pike. Weather permitting, I will be doing Snowdon as well.

"But to put it in perspective, Snowdon is the highest point in England and Wales at 3,560 ft while Kilimanjaro is 19,341. Apparently only 41 per cent of trekkers actually reach the summit."

Mark was a director of an advertising agency and he and Susan – a teacher at Twiss Green Primary – have four sons, Josh, Luke, Ben and Adam.

In the first two weeks of fundraising, Graeme raised £3,150 thanks to the generosity of family and friends.

Anyone who would like to offer more help can do so through the website www.virginmoneygiving.com/mciver

Graeme has paid for the trip and all associated costs himself, so every penny raised will go straight to the charity.



Graeme McIver with Susan Sinclair.

Rotary promise evening of music and fun

AN evening of music and laughter is promised at Culcheth Sports Club on Friday, March 22 which will feature the popular Houghton Weavers and the Lazy River Jazz Band.

The event is being staged by the Rotary Club of Newton and district Jubilee, with proceeds going to Rotary charities.

Tickets, £12.50 each, are available at the club, from Rotary Club members, or by telephoning 01925 762593.

Following the successful beer festival in September, the club organised Christmas Float collections with Santa Claus, raising an additional £3500.

Bents Garden and Home and CPS made their forecourts available for this.

Next Christmas, the club intend resuming street collections with the help of volunteers to tow the float.

The club is now committed to supporting 15 good causes on an annual basis, including schools, Scout and cadet groups, charities, etc.

Many other organisations also receive assistance and any others requiring help should apply by calling Bernard Groom on 01925 733893.

HUNTER HEALEY CHARTERED ACCOUNTANTS

- Professional, approachable, affordable
- Accounts preparation & tax returns for individuals & companies
- Bookkeeping, payroll & vat
- Capital gains & inheritance tax planning
- Business start up advice
- First meeting free of charge

Call Nigel Healey now on 01925 767222

Abacus House, 450 Warrington Road, Culcheth WA3 5QX

www.hunterhealey.co.uk

Tapefox Ltd.

Quality Kitchens & Bedrooms FAMILY BUSINESS EST. 1982




**Complete range of
Kitchens
&
Bedrooms**
to suit all budgets
with **FREE Design
and Planning**
*Exceptional
Quality and Value*

Find us on facebook: www.facebook.com/tapefox

Visit Our Website: www.tapefox.com

Culcheth Open: Tues - Fri 10am - 5pm & Sat 10am - 4pm
St Helens Open: Mon - Thurs 8.30am - 4pm
Fri 8.30am - 3pm Sat 10am - 1pm

14 Church Lane Culcheth 01925 766646 or Unit 11b,
Brindley Road (off Reginald Road) St Helens 01744 811687



*Pattern imprinted concrete
driveways & patios*

www.oakvaledriveways.co.uk




Call Matthew: 01942 677 254
07561 226 864

COMPETITION

Win a bottle of Greenall's gin!

WARRINGTON'S G&J Greenall are England's oldest continuous gin distillers - and Culcheth Life readers have an opportunity to win a bottle of their famous 'Greenall's Original London Dry Gin' in an easy-to-enter competition.

The gin is now produced at a modern distillery in Birchwood after relocating following a disastrous fire at premises off Loushers Lane.

But originally it was produced in Bridge Street where the unique recipe was created by Thomas Dakin in 1761.

Originally called "Warrington Gin" it was an immediate success - partly because of the ease of transportation between Warrington and Manchester and Liverpool, but also because of the drink's distinctive flavour.

More than 100 years later, the drink was renamed Greenall's, but continued to be made - as it is today - according to Thomas Dakin's original recipe.

To enter our competition, readers should write to
Culcheth Life
New Media Centre
Old Road, Warrington
WA4 1AT
or email info@warrington-



worldwide.co.uk

with the answer to the simple question:

What year was the recipe for Greenall's Original London Dry Gin created?

Readers should include their full, postal address and a day time contact number.

**Entrants must be 18 years or over.
Closing date: Friday, March 1, 2013**

Village pub boosted by £1.5m investment

A 345-year-old village pub has boosted takings by 50 per cent with the opening of new function rooms.

More than £1.5 million has been invested in The Black Swan at Hollins Green over the last 12 months - and "The Rixton Room" opened its doors just in time for the festive season.

Gala dinners and parties for businesses from Manchester to Liverpool saw the new facility at 100 per cent capacity, testing the new purpose built kitchens to the full.

Guests who need a room for the night will shortly benefit too, as the pub has one more phase of its expansion, yet to complete - the addition of 14 new bedrooms, due to open in April.

The pub has been at the heart of the local community for many years and last year won North Cheshire CAMRA's Community Pub of the Year award.

Landlord Stuart Wraith, is working hard to further cement The Black Swan as a community pub by introducing local farmers' markets, cinema nights, and even pantomimes.

"The new function room is a real asset to the pub," he said.

"Bookings are coming in thick and fast for the Rixton Room for a whole variety of functions including parties and weddings. We are now looking forward to the opening of the bedrooms in April to add further to our offerings."

A DIY party

AS the expected entertainer for Newchurch WI's Christmas Party was unwell, members stepped in to create their own fun.

The DIY programme began with the game Dingbats, included bingo and concluded with a sing song, after the traditional meal. There was also music and choir singing, and presents for everyone. Members had

decorated Newchurch Parish Hall for the occasion.

Everyone was welcomed by President Sylvia Brown. She then presented the award for the highest score in the year's competitions to Olive Lee.

The next meeting will be on February 13 when Terry Webb will talk about Hearing Dogs for the Deaf.

School celebrates 'Top 10' placing

TEACHERS, pupils governors and staff at Newchurch Primary School are celebrating a "Top 10" placing in the league table of Warrington schools.

The governors sent a message of congratulations to children, parents and staff for their 'fantastic results'.

Vice chairman of the governors, the Rev Chris Stafford, said: "The achievement reflects the hard work by the whole school community, under the leadership of head teacher Mrs Sara Lawrenson.

"The school has a wonderful atmosphere - where the children are encouraged to develop and grow into well-rounded individuals and where the staff are really supportive and work effectively as a team".

House plan worries residents

WORRIED neighbours are opposing plans to build a detached house with basement garage in the garden of a bungalow at Culcheth.

They claim the property - which will have a third floor in the roof space and balconies - will dominate the area and rob nearby homes of privacy.

The development is planned for the garden of a bungalow in Hob Hey Lane.

Four neighbours have objected - along with Culcheth and Glazebury Parish Council. The parish council says the height and design of the building is out of character with the area and adjacent properties and will cause overlooking and a loss of privacy.

They also believe it could add to existing traffic problems in Hob Hey Lane. Neighbours claim the property would effectively be a three-storey house.

But planning officers are recommending that the borough council's planning committee approve the plan, which they regard as a "small-scale, low impact infill development" which would be of an acceptable design.

Members of the borough council's planning committee will visit the site before reaching a decision.

Wedding Fayre

SUNDAY 24TH FEB
11AM - 3PM
CATWALK SHOW 1.30PM

FREE ENTRY AND A GLASS OF BUBBLY ON ARRIVAL

Table Decorations...
Wedding Cakes & More...

THE BLACK SWAN
MANCHESTER ROAD, HOLLINS GREEN, WA5 6LA
T: 0161 222 4444 W: THEBLACKSWAN.CO.UK E: EVENTS@THEBLACKSWAN.CO.UK
North Cheshire Community Pub of the Year

WIRED FREE estimates
electrics

DOMESTIC AND COMMERCIAL ELECTRICAL SERVICES

- installation condition reports
- mortgage reports
- re-wires
- consumer unit changes
- showers fitted
- repairs and fault finding
- lighting

Contact us for a professional and competent local service
t : 01925 764 397
m : 07888 730 383
e : info@wiredelectrics.co.uk

ELECSA approved contractor

Room31

DRESS UP!

PARTY SEASON IS APPROACHING. TIME FOR THAT ALL IMPORTANT PARTY

TONIE'S JESSICA WRIGHT COLLECTION LAUNCHED AT ROOM31



EBONY £5.00

AMY £5.00

FOR THE ULTIMATE PARTY DRESS THIS SEASON LOOK NO FURTHER THAN ROOM31. WE ARE NOW STOCKING JESSICA WRIGHTS COLLECTION, WITH THE GLAM OF ESSEX & THE CELEBRITY LIFESTYLE NO WONDER JESS' DRESSES ARE A MUST-HAVE THIS PARTY SEASON.

WINTER WONDERLAND

SHHHHHH WINTER IS CREEPING UP ON US... TIME FOR WINTER JUMPERS. WRAP UP THIS A/W WITH OUR WINTER FAVOURITES AT ROOM31



£30



DESIGNER INSPIRATION

YSL INSPIRED RING - CASSIE £5.99

Brat&Suzie

A/W COLLECTION NOW ONLINE



£36



LOIS CHELSEA BOOTS 25.00

GET 25% OFF YOUR ORDER ENTER CODE CULCETH25 AT THE CHECKOUT...EASY!

WWW.ROOM31.CO.UK

TaylorBusinessPark.com

business premises to let warrington

call now 01925 763851

latest available office and Industrial units

A Family managed business providing office space and industrial units to let only 2 miles from the M62 and M6 near Warrington's commercial centre set within a rural location. All industrial units and office space feature high specification IT & telecommunications infrastructure, full time on site security and flexible lease terms.

13 Greenwood Court

2,000 sq/ft office space



annual costs

Rental:	£20,000
Security:	£2,000
Maintenance:	£100
Rates:	£7,557

D2

3,563 sq/ft warehouse/office



annual costs

Rental:	£14,934.20
Security:	£1,493
Maintenance:	£300
Rates:	£6,641

3 Whitefield Court

1,000 sq/ft warehouse



annual costs

Rental:	£8,000
Security:	£800
Maintenance:	£300
Rates:	£3,160

Secure HGV parking

the perfect location

We offer secure HGV parking with a fenced and gated area fully floodlit covered by CCTV, manned and patrolled by our own security 24hrs.

Plus toilet and shower facilities as well as several local pubs and restaurant within a 10min walk.



All business rates payable to Warrington Borough Council (per annum). All prices exclude VAT where applicable.

Group Tickets

£5 Family Day Return



Great value for 2, 3 or 4 people travelling together when at least one person is under sixteen, these tickets can be bought on the bus and are valid for one return journey anytime on the day of issue, except before 09.00 on school days.

£8 Family Day Rover

Great value for 2, 3 or 4 people travelling together when at least one person is under sixteen, these tickets can be bought on the bus and are valid for unlimited travel anytime on the day of issue, except before 09.00 on school days.

£10 Adult Group Day Rover

Great value for 2, 3 or 4 people travelling together. These tickets can be bought on the bus and are valid for unlimited travel anytime on the day of issue.

Network Warrington will be changing the times of a number of its services from Monday 28 January 2013

A number of routes will see revised timetables, particularly during off-peak periods in order to improve reliability, some services will be changing their routes and some new links will be created.



- 13** **Service 13** will cease to serve Whittle Hall (which is served by 17/17A & 29) and will form a new link to Sainsburys at Chapelford.

- 29** **Service 29** will no longer serve Collins Green and Burtonwood, these areas will be served by a new **route 33** which will be provided by another operator funded by Warrington Borough Council.

- 48** **Service 48** to Dudlows Green is withdrawn, however, Longwood Road will continue to have a peak service to/from Warrington (**10A**) and the **7A** will provide the off peak link including a new link to Grappenhall Heys (**7C**)

- 10C** **New off peak service 10C** will provide a link from Gainsborough Road to the shopping area at Latchford then on to Stockton Heath.

New leaflets for all services are available from our Travel Centre at Warrington Bus Interchange from **Monday 14 January**, they can also be accessed through our website, and we will also be delivering copies to outlets such as libraries and post offices across the Borough.

www.networkwarrington.co.uk



Shop closes but business booming online

CULCHETH based online fashion retailer Room31 closed its "pop up" shop in Culcheth at the end of January after a successful three months of trading.

Owner Ruth Thomas has decided not to renew the lease for the premises on Common Lane but continue to focus on the online side of the business.

January has been a busy and exciting month for Room31 which sees them move to a larger premises on Taylor Business Park, expand the team as well as doubling their turnover in the last 12 months.

"The last three months has been a great opportunity to widen our brand and increase our customer base locally as well as meeting some lovely new customers," says Ruth.

Room31 are already in talks with nearby towns to open their next pop up shop so watch this space!

As a thankyou to their new customers they are offering 25% off



everything and free delivery in WA3 area using CULCHETH25 at checkout online at www.room31.co.uk

Sparky goes to school



SPARKY the Donkey, from Croft Riding Stables, visited Croft Pre School to make the youngsters' Nativity presentation more real.

The photograph was taken by Shaz Stanley, outside St Lewis' RC Primary School, where the pre school is based.

Adults can learn new skills

CULCHETH High School, in partnership with Warrington Collegiate and LiveWire - the borough's leisure, libraries and lifestyle service - are offering adults the opportunity to return to school and learn new skills.

Courses, currently on offer, are proving very popular. They are as diverse as ICT, digital photography, jewellery making, creating your own wedding flowers or discovering how to bake that perfect loaf!

The IT courses, which run every term, are designed to help adults who cannot even turn on a computer.

Students who took the first basic course before Christmas have returned to build on the knowledge they have already gained.

One student reported that the teachers had been able to help him overcome his fear of computers and that he had "actually enjoyed the lessons".

The next selection of courses will start in April.

More information is available from LiveWire on 01925 768500 or email LiveWire.dporrin@warrington.gov.uk



Culcheth High School
Specialising in Humanities

Culcheth High Community Campus

Adult Learning Courses April 2013

LiveWire



Warrington Collegiate

Culcheth High School is working with
Warrington Collegiate & LiveWire to offer Adult Courses

Discover Pottery

Learn how to work with clay, create your own pots, beautiful plates and tiles. This is a free course with a cost of £25 for materials. One class every Tuesday evening for five weeks starting on the 23th April Please ring 01925 768500 to enrol.

Basic IT Computer Skills

This course will give you the skills needed to type a letter, access the internet and send e-mails. This course costs £35, however learners can access one free course this academic year. Every Tuesday evening for five weeks starting on 23rd April, 6.30pm-8.30pm. Call Registry on 01925 494494 to enrol.

Discover Wedding Floristry

Learn floristry techniques to create beautiful Wedding flowers This course costs £35, however learners can access one free course this academic year, a cost of £15 for materials applies. Every Wednesday evening for five weeks starting on the 24th April, 6.30pm-8.30pm. Call Registry on 01925 494494 to enrol.

Discover Handmade Homes

Use handcrafting techniques to revamp existing items and to create new pieces for your home using paper craft, sewing and fabric skills and exploring paint effects. This course costs £35, however learners can access one free course this academic year. A cost of £15 for materials applies. One class every Wednesday evening for five weeks starting on the 24th April 6.30pm-8.30pm. Call Registry on 01925 494494 to enrol.

Discover Digital Photography

Learn how to take amazing pictures using all of the features on your digital camera. This course costs £35, however learners can access one free course this academic year. Every Thursday evening starting on the 25th April 6.30pm-8.30pm. Call Registry on 01925 494494 to enrol.

Introduction to Baking

Chef Paul Ratcliffe will guide you as you create a range of bread and cakes. This course costs £35, however learners can access one free course this academic year, a cost of £15 for materials applies. One class every Tuesday evening for four weeks starting on the 23rd April, 6.30pm-9pm Call Registry on 01925 494494 to enrol.

For more information on enrolment or guidance
regarding our courses please contact:

Debbie Porrin via email:
dporrin@livewirewarrington.org
Or ring Debbie on 01925 768500



During all stages of business development we can help you realise your business ambition.

- Commercial Agreements
- Commercial Property
- Landlord & Tenant
- Company Law
- Employment
- Partnerships
- Business acquisitions/mergers
- Licensing

We provide a full service to our business clients, advising and assisting them in dealing with the many and varied legal problems which may arise from time to time.

dootsons
SOLICITORS LLP
working for you, working with you

23 Jackson Avenue, Culcheth

calls charged at local rate

0845 330 5700

Email: comms@dootsons.co.uk

www.dootsons.co.uk

CULCHETH • LEIGH • ATHERTON

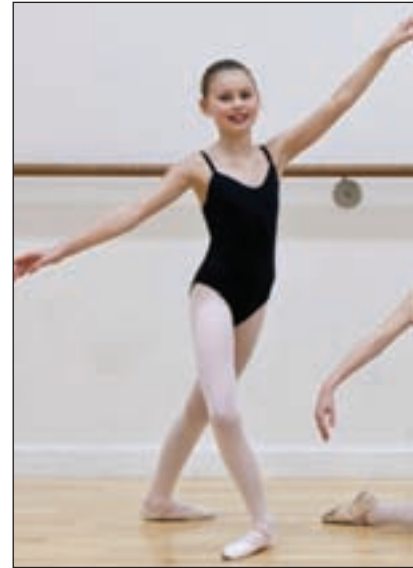
Dance success at first attempt

STUDENTS from Culcheth's Hayward Dance Academy took part, for the first time ever, in the Cecchetti National Ballet Competition held at Sadler's Wells, London - and were extremely successful.

Lily Hope, 10, was overall winner in her category beating students from dance schools around the country.

Hannah Hughes, 10, received the Performance Award, Megan Finn, 11 was runner up in her category and Hannah Platt, 11, received a Commendation for the beautiful presentation of her work.

Hayward Dance Academy, founded by former professional ballet dancer Rachel Hayward, is based in Culcheth, Warrington and offers dance tuition to children and



teenagers aged 3-18 years.

Many former students have gone on to further success, appearing in "Chitty Chitty Bang Bang" at the Liverpool Empire, touring with English Youth Ballet and furthering their training on degree courses in dance and musical theatre at the prestigious Hammond School, Chester and Laine Theatre Arts, London

Campaign to end

A CALL for action to be taken on flooding in Croft village has been made by Warrington North MP Helen Jones and local councillor Chris Vobe.

They say Heath Lane, Smithy Brow and nearby roads, have been prone to extensive flooding for more than three months, and that angry residents want the borough council to intervene urgently. Cllr Vobe said that many homes in the area had been affected by flooding before Christmas.

He said: "Gardens have been left literally under water for days, and the damage has spread to people's kitchens and sitting rooms. More needs to be done by the council - and done urgently. This level of flooding simply shouldn't be happening here in Warrington. One family have been in temporary accommodation since September.

Unless the council plan to suggest that we all start kayaking down the streets, some intervention is needed!"

HALL'S VICTORIAN SWEET SHOP & TEA ROOM

BREAKFAST AND LIGHT LUNCHES FROM 8AM TIL 4PM

TEL: 01925 763827
90 WARRINGTON ROAD, GLAZEBURY, WA3 5NH

M. J. NEEDHAM LANDSCAPES

Award Winning with over 15 years experience

All aspects of landscaping

Specialist in bespoke construction

Qualified design service available

01925 764397 07888 730383

www.mjneedhamlandscapes.co.uk



Left to right, Megan Finn, Hannah Platt, Lily Hope and Hannah Hughes.
Picture: Helen Hamm.

Miss Hayward said: "This is the first time that students from the academy have entered this prestigious competition and I am so proud of their achievements. These students have worked tirelessly and with such enthusiasm and dedication to this event, it has been a real pleasure for

me to watch their confidence and ability grow.

"Both students and parents have been totally committed to an exhaustive programme of rehearsals and I am pleased to say that their hard work has resulted in these accolades."

flooding problems

Cllr Vobe and the MP have written to the council asking for urgent action to be taken.

Ms Jones said: "My constituents in Croft have suffered the effects of this problem now for several months. That is why I have called on the council to intervene urgently.

"They must get to the root of these flooding problems and put an end to the distress this is causing local families."

A borough council spokesperson said: "Flooding has unfortunately occurred at Heath Lane several times due to unusually heavy rainfall we experienced in 2012 which has saturated the land there, filled the drainage systems to capacity and caused the watercourse to over top.

We have already begun making improvements to the systems in this area and are continuing to work closely with United Utilities to resolve these issues. A full investigation into the wider problems and possible solutions is currently ongoing.

Improvements are planned to be undertaken at the earliest opportunity in the next 4-6 weeks. These will include drainage improvements and additional gullies in the area. All affected residents will be receiving written updates on progress and plans to deal with the problems within the next week and will be kept up to date as proposals are ready to be delivered."



TEL: 01925 763627
90 WARRINGTON ROAD,
GLAZEBURY, WA3 5NH
Email: hallsvictorian@mc.com | Email buffet menu request, get 10% OFF

BUFFETS

from £5 per head

*Business Lunches with
FREE Delivery over £30*

Tailored to your needs

*Homemade Cakes, Quiches
Pies, Soups and Stews!*

Fresh, healthy Sandwiches
no wafer thin ham, only the best meat

We Clean Ovens ...so you don't have to!

Call us today to leave your cooking appliances sparkling, using our eco friendly products.



Our oven cleaning experts will leave you free to enjoy your valuable leisure time.

Local | National | Affordable

Call for LOCAL service



01925 453377

oven.co.uk

The Gardening Guide

FEBRUARY

- Summer flowering shrubs can now be pruned to improve their shape.
- Remember to check on tender plants outdoors during winter and protect if necessary.
- Actively growing houseplants will benefit from a shot of liquid plant food.
- Roses can also be pruned now, especially hybrid teas and floribundas.
- Let your creative side take over when planning summer bulbs. Just consider colour, height and flowering time.

Come in store and see one of our experts for further advice.

Good luck for the gardening year ahead!

www.bents.co.uk






Here's a thought:

Something for everyone

At Bents there's lots to see and do. From our Farmers' Market and Orchid Weekend, to our Antiques Valuation Day and Half Term Fun. There's always something for everyone!

SPECIAL EVENTS*	
FARMERS' MARKET	EVERY 3RD SATURDAY
ANTIQUES VALUATION DAY	6TH FEBRUARY 10AM - 4PM
ORCHID WEEKEND	23RD & 24TH FEBRUARY
HALF TERM ACTIVITIES	8TH - 24TH FEBRUARY

*Check online for details.

Celebrating over **75** years of beautiful living



bents

For beautiful living

Bents Garden & Home, Warrington Road, Glazebury, Cheshire WA3 5NT.
Tel: 01942 266300. Open 7 days & Bank Holidays.



SHOP ONLINE www.bents.co.uk

INSPIRING SUCCESS

Have you got a child leaving school this summer?

Come along to our Open Evening at the Sixth Form Centre, Sale Way, Leigh

Thursday 21ST February 2013, 5.30pm-8.00pm



AS/A LEVELS PROVISION IN LEIGH!

Wigan & Leigh College offers an extensive range of AS/A Level programmes

- Applied Law*
- Art
- Biology
- Business*
- Chemistry
- English Language
- English Language & Literature
- English Literature
- Film Studies
- French
- Geography
- Health & Social Care*
- History
- ICT
- Maths
- Media Studies
- Physical Education
- Physics
- Psychology
- Sociology
- Spanish

*BTECs studied alongside AS Levels

VOCATIONAL COURSES

Ideal for those students who prefer a more hands-on approach!

- Access to HE
- Applied Science
- Business & Accounts
- Business Administration
- Childcare & Early Years
- Computing & IT
- Health & Social Care
- Public Services
- Sport

IMAGE CENTRE

- Beauty & Holistic Therapy
- Hairdressing
- Nails
- Spa Therapy
- Specialist Make-up
- Apprenticeships



■ STUDY WITHIN A UNIQUE ATMOSPHERE

■ EXCELLENT FACILITIES

■ SUPPORTIVE ENVIRONMENT



IMAGE CENTRE - WALMESLEY ROAD, LEIGH

Course enquiries **01942 761111**
www.wigan-leigh.ac.uk

We look forward to seeing you!

styles and co
chartered accountants

- Tax Planning
- Corporate Finance
- Audit & Accounts
- Management Accounts
- Business Development
- Business Sales & Acquisitions
- Forensic Accounting

**Heather House,
 473 Warrington Road,
 Culcheth, Warrington,
 WA3 5QU**

**Tel: 01925 761600
 Fax: 01925 761601**

**Email:
 mail@stylesandco.co.uk**

stylesfiles

Child Benefit changes could cost you £1,000's!

With effect from 7 January 2013 a new tax charge was introduced by HMRC. It applies to any taxpayer who has a net income in excess of £50,000, where either they or their partner is in receipt of Child Benefit. This new income tax charge will reduce or eliminate the value of child benefit for families where the recipient or a partner has an income over £50,000.

Potentially, this could cost the tax payer approximately £1,700 per year for a family with two children.

Where both partners have income in excess of £50,000 the charge will apply to the partner with the higher income, irrespective of which partner actually receives the child benefit.

Where a tax payer has an income that exceeds £60,000 the charge will equal the amount of child benefit received and therefore they will be likely to lose all of their child benefit. Where the tax payer's net income is between £50,000 and £60,000 a sliding scale charge will operate.

Does this apply to you?

If so, you will need to pay the charge through the completion of a self

-assessment tax return. If, after HMRC have done their calculations, the liability does not exceed £3,000 this may be collected by a PAYE coding adjustment i.e. by deduction from salary during the tax year 2013/14, otherwise the full amount will be payable in a lump sum by 31 January 2014.

However, as an alternative to receiving child benefit and then paying tax later you can elect at anytime not to receive Child Benefit in the first place. This will also mean you won't have the hassle of filing a tax return (unless you are already registered under self assessment).

There are other ways to mitigate this new tax charge including increasing pension contributions or gift aid

payments, splitting income within the family more efficiently and timing income carefully.

If you need help completing a self-assessment form, require further information regarding opting-out of Child Benefit or you wish to speak to us about income planning, please contact Sarah Salton on 01925 761600.



Please note the contents of our article are intended to inform rather than advise and you should always take professional advice before taking action.

If you require any further information or assistance then please contact Sarah Salton at Styles and Co on 01925 761600.

The Styles Files are provided by Styles & Co, if you would like further information call 01925 761600

www.stylesandco.co.uk

For a beautiful new kitchen this New Year...
just change the doors

We'll pay the VAT This month

This year your New Year's resolution, just might come true ...

- Huge choice of Doors, Worktops, Appliances, Sinks & Taps
- Senior citizens discount
- From doors to complete kitchens
- Made to measure custom-built doors and units
- Free Estimating and planning
- Low cost with minimal hassle and disruption

DREAM DOORS
 NEW LIFE FOR OLD KITCHENS

Visit our Showroom: 92 Knutsford Road, Grappenhall, Warrington WA4 2PJ
 Call now for a Free Design quotation
Tel: 01925 211308

View our credentials at checkatrade.com

www.dreamdoors.co.uk

Guaranteed savings for your home!

The Utility Warehouse 'Double the Difference' Price Promise means you could benefit from:

- The UK's cheapest Home Phone
- The UK's cheapest Broadband
- The UK's cheapest Mobile tariffs
- The UK's cheapest standard Gas and Electricity

DOUBLE THE DIFFERENCE PRICE PROMISE

Culcheth Life
0800 955 5247
info@culchethlife.com
www.utilitywarehouse.org.uk/orbit

Home Phone, Mobile, Internet, Gas, Electricity

THE UTILITY WAREHOUSE DISCOUNT CLUB

ACH GARAGE SERVICES

Repairs • Servicing • Bodywork • MOTs

Diagnostics - Car and Light Commercial

Petrol and Diesel

MOT Work • Tyres and Exhausts

Collection and Delivery Service

Breakdown and Recovery Service



Tel: 01925 815152 Fax: 01925 815142

www.achgarage.co.uk Email: achservices123@btconnect.com

Unit 11AA Trident Business Park

Daten Avenue, Risley, Warrington WA3 6AX



ALL CREATURES VETERINARY CENTRE

- Modern Facilities & Equipment
- Convenient Location
- Convenient Appointment Times
- Monthly Promotions and Special Offers
- Ample Off Road Car Parking
- Disabled Access & Parking
- Nurses Clinics
- 24hr Emergency Cover

A caring and friendly service for all your pets needs

Tel: 0161 777 8484

Glazebrook Lane, Glazebrook, Warrington WA3 5BL

www.allcreaturesveterinarycentre.co.uk

Genesis Shoes



Further Reductions and Savings In Our Winter Sale
Must End Soon

New Spring/Summer Stock Arriving Daily!

Tel: 01925 762463

60 Lodge Drive, Culcheth, Warrington WA3 4ER

www.genesisshoes.co.uk

To promote your business on our Pink Pages from just £50 per month contact James Bryan 01925 631592



(Tony Buxton MRCVs & Colleagues)

Now Open for all your Pet Health Needs:

Vaccinations • Worming • Flea Treatments • Neuturing
Pet Passports etc

For an appointment please Tel: 01942 671215

The Vets @ Leigh Dogs & Cats Home

(Side of Greyhound Hotel) East Lancs Rd, Leigh WN7 3SE

THE NEW MEDIA CENTRE
OLD ROAD, WARRINGTON WA4 1AT
01925 240247
info@247print.net



10,000
A5
FULL COLOUR
£248.00
PAY FOR 1 SIDE
GET THE OTHER
SIDE PRINTED
FREE

500
FULL COLOUR
Digital Business Cards
(Buy 1 set, get 1 set free)
£35.00

100
A3
£38.00
FULL
COLOUR
POSTERS

60"X40"
FULL COLOUR POSTERS
ONLY £12.00 EACH

ALL PRICES ARE SUBJECT TO VAT



**WE ARE MOVING...
...NEXT DOOR!**

Tuesday 5th Feb
Drop in and say hello

See our lovely brand new salon
Lots of Special Offers & New Treatments

Don't forget 5th Avenue Gift Vouchers make the perfect gift for

♥ VALENTINE'S DAY ♥

New treatment menus available

Tel: 01925 766308

The Courtyard, 26 Common Lane, Culcheth

CULCHETH & GLAZEBURY PARISH COUNCIL NEWS

Your Parish Councillors

NEWCHURCH WARD



Chris Vobe
01925 419481



Jacqui Johnson
01925 763435



Matt Smith
matt.smith062@gmail.com

GLAZEBURY & MEE BROW WARD



Angela Duncombe
01925 419481



Eddy Estlin
eddy.estlin2012@gmail.com

CULCHETH WARD



Mike Vobe
mike.vobe2012@gmail.com



Peter Caswell
01942 671938



Keith Bland
01925 766641



Lilian Houghton
01925 762935



Paul Campbell
01925 766658

Happy New Year!

All 10 members of Culcheth and Glazebury Parish Council would like to offer our best wishes for a peaceful and prosperous New Year to all the members of our community. Over the next 12 months, the new Parish Council will continue to update you regularly on the work that we are doing - and, as always, we welcome input, feedback and remarks from local people.

The new Culcheth and Glazebury Parish Council website

Visit us online at: culchethandglazebury.org.uk

This month, we are proud to launch the new Culcheth and Glazebury Parish Council website. Designed primarily by Cllr Matt Smith, the website represents the delivery of one of the new Parish Council's key pledges - to bring the Council into the 21st century. The site has now gone live and, although still in its infancy, we hope that it will be a great resource for the villages in the long-term. Over the next few months, we will be ensuring that the website continues to grow. We want to use it to promote the many successful services, clubs and community groups that are available here in Culcheth and Glazebury. In addition, residents will be able to use it as additional way of keeping up to speed on the work your Parish Councillors are undertaking. The latest news and details of our meetings will all be available.

As we promised last month, we have incorporated a "Local History" section into the site. We would welcome any submissions by residents for this page, so that we can illustrate a full and engaging history of our community. If you have any images you would like to share, please email them to matt.smith062@gmail.com.

Supporting Glazebury Play Area

The Parish Council have continued to offer support to the Glazebury Play Area committee. Their project - to bring a natural play area to the village - has moved forward leaps and bounds. Chris, Angela and Eddy are regular attendees at the committee's meetings and are working with the team to deliver a fantastic resource for everyone. This month, the Parish Council has approved a financial contribution to the project, to kick-start the work. We are looking forward to seeing the Play Area coming to life over the coming months.

Local Plan Core Strategy

This will be examined in public later this year and will eventually replace our Unitary Development Plan. An exploratory meeting was held on December 11th and a result of this was that there is a six week consultation on draft modifications and clarifying statements up to 18th February. The exploratory meeting notes are on the Examination News section of the Local Plan Core Strategy page of www.warrington.gov.uk together with a link to the to the Clarification Statements and Proposed Modifications. Parish Councillor Jacqui Johnson attended the meeting.

Repairs to our roads

Throughout the villages, your parish councillors have been working diligently to ensure that our roads and pavements remain in good condition. As a result of our representations, repairs have been carried out to areas like Kirkby Road, Culcheth Hall Drive and throughout Newchurch.

Supporting local traders

There can be no doubt that the disastrous decision to close Wilton Lane for repairs over the festive period has had a damaging effect on our shops and services. Your Parish Councillors have been robust and firm in our representations to the Borough Council about this matter and made it clear that we are on the side of traders in this village. The Parish Council has submitted a formal complaint to the council's Chief Executive over the way the road closure has been handled. We are doing everything possible to make sure that the repairs are now completed as fast as possible.

Cricket club mourns two stalwart members

MEMBERS of Glazebury Cricket Club are mourning the deaths of two long-standing players in one month.

Tom Milmine (pictured), popular head groundsman and a distinguished former player and former club captain Don Morris died within a couple of weeks of each other.

The funeral services took place at All Saints Church, Glazebury - just across the road from the Hurst Lane ground.

Don Morris was a founder member of the club when it reformed after World War 2. He was one of three brothers who all played cricket and football at Glazebury in the days when the ground hosted both

sports.

Don, a technically correct, dependable batsman, was club captain for many years, usually opening the batting. But he was also a fine close-in fielder and useful spin bowler.

After giving up playing, he served as a league umpire for some years.

Former club president Alan Graham, also a founder member, said: "He could have played cricket at a much higher standard but preferred to stay with his friends in Glazebury."

Tom Milmine, 64, was originally from Barrow-in-Furness but moved to Glazebury in 1985 and soon became a valued member of the

cricket club.

Later he became caretaker at Glazebury CE Primary School, where he worked until his death.

Although he was also a keen golfer, cricket was his first love and his accurate, medium pace bowling was well respected by opposing teams. According to the club website he took 252 wickets for Glazebury, at an average of 15.43. But the record is incomplete and he undoubtedly took many more wickets.

On his day, he was also an aggressive batsman, with several fifties to his credit.

Tom's playing career ended prematurely in 2008, through back



trouble.

But he continued as groundsman and will be sorely missed by his many friends at the club and in the village generally.

Classic comedy with a new twist

NOEL Coward's classic comedy "Private Lives" is to be staged in Culcheth on February 8-9 - with a new twist.

Newly formed amateur group Consensus Touring Theatre will present the play at Culcheth Sports Club, Charnock Road. Curtain up: 7.30pm.

The play concerns a divorced couple who go on honeymoon with their new spouses only to find, to their horror, that their former spouses are staying in the same hotel - in the next bedroom.

It was first performed in 1931, with Coward starring in it himself, alongside Gertrude Lawrence.

Later productions have involved such stars as Elizabeth Taylor and Richard Burton, Vivien Leigh and Lawrence Oliver.

Consensus Touring Theatre has been started by a number of experienced amateur actors and is an experimental group in that, instead of having a sole director taking the helm, the members of the cast all share the directing role.

Founder member Philip Wade said: "Our ethos is to breakaway and steer to a new principle, so that all involved are to play a role in enriching and embellishing the piece as we go along."

"This principle, we feel, has not only been feasible but very refreshing to us as performers. Maybe, in the future, other performers would consider and sample the same philosophy?"

After staging the play at Culcheth, the group plan to take it on tour around theatres across the North West.

All tickets are £7 and are available from the club 01925 763096 or 07962 290708.



The cast, left to right: Sebastian Farrell, Jane Rigby, Judianne Fisher, Philip Wade.



RBL Village Club chairman Les Styles, Poppy Appeal Co-ordinators Roy Constable and Ian Ferguson, RBL branch president Chris Chapman and RBL branch chairman John Hughes.

Poppy Appeal raises £500,000

THE Culcheth Royal British Legion Club has reached the milestone of raising £500,000 towards the Poppy Appeal.

This has taken a number of years and an enormous amount of hard work.

RBL Village Club Chairman Les Styles said: "Congratulations to all the local members as well as the various Cadet groups and others who have worked so hard but particular recognition must go to Roy Constable and Ian Ferguson who spend more than three months every year ensuring that the Poppy Appeal is a success."

Anecdotes of a registrar

SPEAKER Carol Codd gave an entertaining talk entitled "Anecdotes of a Registrar" at the monthly meeting of Culcheth WI.

She had worked in Liverpool and one day was greeted with the question: "Do you remember me?" It seems she had married the visitor's mum and step-dad 10 years previously.

Carol's joking response was: "Yes - married in the eyes of Codd!"

Some historical facts included the fact that civil registration of marriages started in Britain in 1887. A 1646 Act stated that neither shrouds nor sheets could be used for burial but only wool. Secret marriages were widespread and were big business in London. A man was held responsible for a wife's debts, and it was only in 1880 that women were allowed some financial freedom.

Bigamy was punished by branding on the hand - and members were surprised to learn that marrying your first cousin is acceptable and within the law.

For good measure members were told that Emily Pankhurst of Suffragette fame had run a registry office from her front room!

Cricket club gears up for new season

GLAZEBURY Cricket Club is organising cricket training sessions at Culcheth High School for senior players and for young people between the ages of 8-16 years.

The course consists of eight one hour sessions on Saturdays starting on February 16 and continuing until April 6.

Senior net training is from 2pm to 3pm. Under 13s and under 15s age group is from 3pm to 4pm and under 11s from 4pm to 5pm.

The cost for the whole course is £20.00, with the first two free taster sessions for new players. All equipment is provided.

All juniors will be trained by qualified ECB coaches with 1st aid qualifications and current CRB registration.

Further information is available from Mike Durrington on 07729 853915 or at elmik2326@aol.com

CLASSIFIED

Advertising: 0800 955 5247

CARPET CLEANING

A1 STAINBUSTERS: Fully guaranteed carpet and upholstery deep dry cleaning. Clean and dry in only ONE hour. Quotes for both commercial and domestic. Contact the Local expert **John Latham FREE on 0800 137772 or call 07765 314080** (04/13) **SIMPLY THE BEST CARPET CLEAN YOU WILL EVER** have. Cleaners UK Ltd. Est 23 yrs. Have your carpets & sofas beautifully deep cleaned leaving them fresh smelling & colour restored. Latest & best methods. Dry/steam. Professional, reliable & affordable. **Call Neil Riley on 01925 264989/07831 336060** For more information www.cleaners-uk.net (12/13)

CHIROPODY

KATHRYN GRACE AND ASSOCIATES, D.Pod.M, M.Ch.S., HPC registered Chiropractors/Podiatrists, 26 years experience, offering friendly and professional footcare, also Gait Analysis. Care home contracts are welcome. Culcheth based. **Tel 01925 762404** www.parkviewcentre.co.uk (12/13)

CLEANING SERVICES



arley's angels

- Spring Clean Specialists
- Presenting your home for sale
- Moving house
- After building work cleans

01925 266834
because you're worth it!

COMPUTERS

AED COMPUTER SERVICES. For all your PC servicing requirements including: Hardware repairs /upgrades, Software / Operating System re-installs, Virus removal, basic training: **Tel: 01925 766426, mobile: 07870 260657, email: enquiries@aed-cs.com, Web: http://www.aed-cs.com** (04/13)

DELIVERY SERVICES

FURNITURE FERRY LIGHT REMOVALS. Collections arranged from Ikea, Costco and other stores, garden centres, auctions etc. You choose, you buy, I deliver - SIMPLE. Reliable, inexpensive service. **Tel: Matt 07970 178 333 or 01942 732768.** www.furnitureferry.co.uk (05/13)

DRIVING TUITION



MIKE PARKER ADI

- Driving • Theory Tuition
- Patient • Friendly • Reliable.
- Pass Plus • Gift Vouchers

01925 767277 or 07791 622475

ELECTRICAL CONTRACTORS

EVERGREEN ELECTRICAL CONTRACTING. NICEIC approved contractor. For lights and sockets to rewires, fuse-box upgrades. Qualified electrician. All work is to the latest IEE wiring regulations. No job too small. Most major credit and debit cards accepted. **Tel: David on 01925 724219 / 07971 407022.** (07/13)

FIRES & FIRE SURROUNDS



Quality Fireplaces at Affordable Prices

WARRINGTON FIRE SURROUNDS

Surround & Marble Only £299

Quality Value Service Guaranteed

01925 417731
www.warrington-fires.co.uk
8 Lovely Lane, Warrington (follow signs for hospital)

GARDENING SERVICES

LAWN DRAINAGE AND SOIL AERATION. No trenches, no drainpipes, no digging, no repairs, no hassle. If this interests you **Contact Bob Harper 01925 266852 or 07952 608701.** (03/13)

GAS SUPPLIES



Gas Cylinders UK Ltd

The Northwest leading gas supplier

Patio, BBQ, heating, refrigerant and welding gas.

Free delivery within 15 miles of depot

340 Haydock Lane, Haydock Ind Estate, WA11 9UY

0800 195 1313

Order Online: www.gascylindersuk.co.uk

GATES



Village Gates

Manufacturers and installers of quality timber gates

villagegates.co.uk

For free quotes and advice call **01925 766629**

Office Workshop and Showrooms at 10 Charnock Road, Culcheth, WA3 5SH

HEALTH

C.L. JONES L.C.S.P (PHYS.) Remedial Massage and Clinical Hypnotherapist. Treatments available. Help in Stopping Smoking. Weight loss. Including gastric band hypnotherapy, phobias and many more stress related conditions. **30 Sundial House, Culcheth WA3 4EN. 07845473467. 01925767979** (07/13)

HOME SERVICES



ATLAS ENVIRONMENTAL SOLUTIONS

PEST CONTROL CHIMNEY SWEEPING

Our prices are fixed. Only safe, legal & trusted products used. Guaranteed results, fully insured. Your friendly, local independent.

07999 487 925 / 01925 445 222
www.atlas4u.co.uk

OFFICE SPACE TO LET

CULCHETH ENTERPRISE CENTRE. 550 sq feet of open plan office available in centre of Culcheth. Modern facilities with parking and rural outlook. £10 psf plus rates and service charge. **Contact Rob Hodgson 01925 763016 or visit www.culcheth.com** (12/13)

PAYROLL

WHY TRY TO BE A PAYE EXPERT? Watkinson Black can provide a cost effective payroll service, releasing you to concentrate on your business. For further details please phone: **01925 413210** or e-mail: info@warringtonaccountants.co.uk (01/13)

PRINTER CONSUMABLES



WHEN IT RUNS OUT

POP IN AND SEE HOW MUCH MONEY YOU COULD SAVE TODAY!

5 London Road, Stockton Heath, Warrington, WA4 6SQ

01925 600633 

www.stocktonheath.cartridgeworld.co.uk (13/13)

TREE SURGERY

ROBERT WOOLSTENCROFT TREE SERVICES. Commercial and Domestic tree and Landscaping services. NPTC qualified, Safe Contractor approved and fully insured. Friendly and reliable, local family business. **Contact Robert 01942 673736 or 07811 954065** (12/13)

TUITION

SPANISH LESSONS IN CULCHETH Daytime tuition in Spanish grammar for adults – beginners or revision. Experienced retired tutor, friendly relaxed lessons for singles or couples. **Tel 01925 765 962 or Mob 07922 155 275** (14/13)

WINDOWS & GLAZING

LEIGH GLASS LTD FOR ALL OF YOUR GLASS requirements please contact **Tel 01942 678440** Fax **01942 261728** email leighglass@hotmail.co.uk (17/13)

SP GLAZING for all your glazing requirements, double glazed units including failed and misted units, broke windows, mirror fixing. Kite marked to B/S. Time served glazier with over 30 years experience. **For a friendly no obligation quote tel Sam Pendlebury on 01942 671859. Mob 07919 660296.** (14/13)

Reach 1,000s of potential clients by promoting your products or services on these pages

Call us FREE NOW to find out how we can help you

0800 955 5247

Distributors wanted in Culcheth

Join a successful team and earn money helping people save money!

- choose your own hours
- full training and support
- up-front bonuses
- earn a second income
- on-going commission
- no stock to carry



Find out more!

Culcheth Life
0800 955 5247
info@culchethlife.com
www.utilitywarehouse.org.uk/orbit



SALES PERSON

Culcheth Life and its sister publications are looking for a self motivated person with good people skills who can work on their own and as part of a team.

The successful applicant would be able to work from home but would also be expected to spend a certain amount of time in the office
Hours are by agreement.

The package offers expenses and uncapped commission

If you feel you have the necessary qualities please email your CV to info@warrington-worldwide.co.uk

IT'S TIME TO
CHOOSE YOUR
PROM DRESS
DON'T LEAVE IT
TOO LATE!!



The
Dress
Studio

- Dresses of all styles: long, short & high-lo!
- For all occasions: prom, parties, races, cruises, birthdays, engagements etc!
- Free Parking
- Prom Collections now instore - over 400 styles!

Simple & Elegant



Princess Ballgowns



Sparkles & Sequins



Short Dresses



Cut-out & WOW!



Opening Hours

Tues: 9.30am - 5.30pm
Wed: 9.30am - 5.30pm
Thurs: 9.30am - 7.30pm
Fri: 9.30am - 5.30pm
Sat: 10am - 5.30pm
Sun: 12pm - 4pm

Tel: 01925 766258

Email: info@dress-studio.co.uk

Shop online at www.dress-studio.co.uk

The Dress Studio (located next to Black Sheep Wools) - FREE PARKING!
The Warehouse Studios, Glaziers Lane, Culcheth, Warrington, WA3 4AQ