

Lymm

Life

FREE EVERY MONTH

June 2018

Issue: 231



urban

BUILDING PROJECTS LTD

**Extension &
Building Renovation
Specialists**

Tel: 01925 730888

www.urbanbuildingprojects.co.uk

Hale

CARPETS & FLOORING

**See our main advert
on page 16**

01925 756275

www.halecarpets.com

Banner & Co

Independent Residential Sales
and Letting Agent

**See our main advert
on the back page
for details**

01925 753636

idfm

THE COMPLETE BUILDING SOLUTION

EXTENSIONS

DESIGN & BUILD

NEW BUILD

01925 598120

WWW.IDFM.SOLUTIONS

eden

RESIN BOUND SPECIALIST

www.eden-resin.co.uk

01925 263125



**LYMM
PARISH
COUNCIL**

Approved by Lymm Parish
Council as the official
magazine for Lymm

**Sun shines down
on May Queen**

See Centre Spread

Regular news updates at www.lymmmlife.co.uk

Editor
Gary Skentelbery

Production
Paul Walker

Advertising
James Balme
Freephone
0800 955 5247

Editorial
01925 623633

Email
info@lymmmlife.co.uk

Websites
www.lymmmlife.co.uk
www.culchethlife.com
www.frodshamlife.co.uk
www.warrington-worldwide.co.uk
www.warrington.tv

Address
New Media Centre
Old Road Warrington
WA4 1AT

Lymm Life is published monthly by Orbit News Ltd.

The contents of this magazine are fully protected by copyright and nothing may be reprinted or reproduced without prior permission of the publishers.

The publishers are not liable for any statement made or opinion expressed by third parties in this publication.

Printed by TwentyFourSeven

Editor's Comment



MOVING the annual May Queen Festival from June to May certainly paid off with the event being blessed with glorious weather.

Congratulations to all those involved in organising this great community event and now hopefully we can look forward to Lymm Festival and all the events and activities which help make Lymm such a special place.

Hopefully the outdoor activities like the Food Fest and Transport Day will dodge the showers which have blighted the month of June in recent years.

There is nothing like a bit of sunshine to help make these events go with a swing. It certainly made covering Lymm May Queen much more enjoyable.

Once again we covered the event live on social media pulling in viewers from far and wide, all of

them enjoying seeing what a great community we have here in Lymm.

Sadly though it is not all good news with ongoing issues, mainly revolving around troublesome youths who are continuing to be a nuisance, believing they are above the law.

As well as ongoing issues regarding vandalism up at St Mary's Church I have heard reports of a group of youths making a nuisance of themselves on the May Queen Field the evening before the main event.

As I have only picked up hearsay as Lymm Life was going to press I can't say too much on the issue but from what I have heard it was not a pleasant experience for the person involved and certainly warranted swift police action and a punishment to fit the crime for those involved.

Whether these days the punishments ever do fit the crime is another issue! But certainly something needs to be done about these youngsters who are making a nuisance of themselves in the village.

I would again appeal to parents and guardians to check up on the whereabouts of your loved ones in the evening, especially at weekends.

If they are just hanging out there is every chance they could be hanging out with the wrong crowd!

Deadline for the July issue of Lymm Life is June 5

N & J STANHOPE

Coal and Log Supplies

Best Quality Coal
Smokeless Fuel
Logs Supplied in Bags and Bulk
Fresh Bacon and Eggs

Open 6 Days. Closed Sunday

Broomeedge Farm
Burford Lane, Lymm WA13 0SE

Tel: 752830
Mobile: 07979 785 421

We offer a range of massage treatments:

CHESHIRE Natural Health

Relaxing Massage • Swedish Massage
Sports Massage • Pregnancy Massage
Manual Lymphatic Drainage
Scar Tissue Massage

Please call to find out more
Tel: 01925 730123

www.cheshirenaturalhealth.co.uk
Cheshire Natural Health, Beehive House, Tarporley Road, Stretton, Warrington

SPRING RELAX & RECHARGE SPA DAY JUST £67PP

Unwind in the tranquil surroundings of The Park Royal Spa, the perfect sanctuary for pampering. Book a spa day and enjoy:

- A 50 minute spa treatment
- A delicious light lunch
- Use of our health club facilities
- Complimentary robe and slippers for ultimate comfort

Plus you also receive:

- A FREE ESPA gift
- 20% off any additional pre-booked spa treatment
- Late night opening Tuesday - Thursday

PURCHASE YOUR SPRING RELAX & RECHARGE SPA DAY AND ENJOY BEFORE 20TH JULY 2018.

Enquire today and quote WARRINGTON SPRING
Call us on 01925 730 073 or email us at spa@theparkroyal.co.uk



Terms and conditions apply and offer subject to availability. Offer valid Monday - Friday until 20th July 2018. Treatment includes 50 minute spa treatment and 10 minutes client care and consultation time. 1 x ESPA gift per person is subject to availability and will be presented on arrival to the spa. Images used are for illustration purpose only. For full terms and conditions, visit QHotels.co.uk/SPRINGRELAX18

Vandals target St Mary's Church again

VANDALS have again targeted the porch at the historic St Mary's Church, Lymm.

As a result, the church has

launched an appeal to raise about £5,000 to install gates at the front of the church to prevent access to the porch when the church is not

open.

Rector, the Rev Beverley Jameson, said one of the benches in the porch was completely destroyed by vandals in January.

"Unfortunately, the bench on the other side of the porch is also showing signs of damage and we still find litter, sputum, debris and empty drugs packets within the porch area," she said.

"We are looking to install gates at the front of the porch which would mean we could securely prevent access to the porch when the church was not open.

"The wardens are currently seeking three quotes for the provision of gates but we believe we are looking in the region of £5,000. We have a great deal of building maintenance before us this year with permanent repairs to the ceiling and five year annual survey of the church in the autumn

to identify future repair work.

"Therefore we are launching an appeal to raise funds initially for the provision of gates and if we raise more than the amount needed, this will go to general maintenance of the ceiling, roof and building maintenance.

Anyone who would like to send a donation should send a cheque made payable to "Lymm PCC" to 46 Rectory Lane, Lymm WA13 0AL.

The Rector added: "I know the people of Lymm are remarkably generous. We have already received donations from individuals and Lymm and District Round Table.

"St Mary's has been at the heart of Lymm for hundreds of years and I pray we can continue to be at the heart of our community, protecting the building from vandals, the wind the hail and the rain to enable us to open our doors to everyone. Please consider giving a donation"

New chairman for Parish Council

NEWLY elected borough councillor Cllr Anna Fradgley has also been elected to serve as Chairman of Lymm Parish Council for the coming year.

Anna said: "I am extremely honoured to have been elected as Chairman of the Parish Council, particularly as this is the Year of the Woman, celebrating 100 years since some women got the right to vote in Britain.

"I would like to thank Councillor John Bamforth who has served as Chairman in the last year and has guided the Parish Council through twelve months of upheaval and accomplishments. All Councillors and the Clerk have worked extremely hard to deliver a number

of achievements.

"The up and coming year will be dominated by the Local Plan and the Parish Council will continue to protect the Green Belt until the Lymm Neighbourhood Plan is in place. I am personally going to encourage more residents to become involved in what happens in their village, using the powers designated to them under the Localism Act 2011. I feel confident that the Parish Council will continue to serve residents and help to make Lymm a wonderful place to live, work and visit."



Sophies Soft Furnishings

Curtains • Roman Blinds
Cushions • Tiebacks • Poles
Tracks • Valances • Pelmet
We design, make and fit to meet your exact requirements.

For free home visit or advice ring
Anne on 01925 754446
www.sophiessoftfurnishings.co.uk

We Clean Ovens

...so you don't have to!

Call us today to have your cooking appliances sparkling, using our own eco friendly products.

Our oven cleaning experts will leave you free to enjoy your valuable leisure time.



Call TODAY for **01925 453377** oven valeting service
LOCAL Service ovenwarrington.net Local | National | Affordable

Rosebank & Naturegarten

BOOK 15 OR 30HR FUNDED PLACES FOR SEPTEMBER



We have great spaces and places for babies and children at Rosebank and Naturegarten.

Part time, full time sessions available for term time and all-year round

Children and staff are really liking the new pre-school rooms and bug-hunting in their own separate garden.

THE ROSEBANK CENTRE & ROSEBANK NATUREGARTEN, PEPPER ST
WWW.RNGROUP.CO.UK 01925 320161

@rosebankandlakescentres

QUALITY
KITCHEN
FACELIFTS

Transform your
kitchen this Spring

Read our reviews on
Checkatrade.com

Est.
1999



why replace when
you can reface?

- Installed by local skilled tradesman
- Door swaps to full kitchen tailored to your needs
- Senior citizens discount

DREAM DOORS®
NEW LIFE FOR OLD KITCHENS



Call Lynn for a Free Quotation:

01925 211 308

www.dreamdoors.co.uk

wa@dreamdoors.co.uk
www.dreamdoors.co.uk
Dream Doors Northwest, 92 Knutsford Road, Grappenhall, Warrington, WA4 2PJ

What's On in conjunction with Lymm Parish Council



June 12
LYMM PARISH COUNCIL
Lymm Parish Hall 7.30pm

June 21 - July 1
LYMM FESTIVAL
www.lymmfestival.org.uk

LYMM THURSDAY EVENING BRIDGE CLUB

Lymm Village Hall every Thursday 7pm

MAPLE LODGE ART GROUP

Meet each Wednesday 9.30am - 12.30pm
Oughtrington Community Centre, Lymm
Details: 01925 755126

ROTARY CLUB OF LYMM

Every Wednesday at Statham Lodge Hotel
7.15pm for 7.30pm
Contact the secretary 01925 650189

LOVING HEARTS & HANDS

Knitting for charity at Lymm Methodist Church,
2nd and 4th Thursday each month.
1.30pm - 3pm. Details: 01925 753298

MARKET LUNCHES

Eagle Brow Methodist Church
3rd Thursday in the month
Light lunches 12 noon till 2pm. All proceeds to
Youth For Christ and YMCA Room at The Inn

LYMM SCOTTISH COUNTRY DANCE CLUB

St Mary's Church Hall
Second and fourth Fridays (Sept - May)
7.30pm. Details: 753853

GARDENING CLUB

Meet Third Wednesday of the month
Lymm Baptist Church, Higher Lane. 7.30pm
Visitors welcome. £2 includes tea and cake

LYMM FLORAL ART GROUP

Lymm Village Hall
Third Monday of the month (except August)
at 7.30pm

LYMM PHOTOGRAPHIC SOCIETY

Every 2nd and 4th Wednesday
(ex July & Aug), 7.30pm
Spread Eagle pub, Eagle Brow.
Details: www.lymmphotosoc.org.uk

LYMM WINE AND BEER CIRCLE

3rd Wednesday of the month, 8pm
The Spread Eagle Hotel
Details: 01925 604400

LYMM CONCERT BAND

Rehearsals every Thursday evening
United Reformed Church, 8pm.
Details: 01925 752934

LYMM WI

Every second Wednesday, 2-4pm at Lymm
Youth and Community Centre. Visitors
welcome.

LYMM BOOK CLUB

Second Thursday of the month 7.30pm,
Spread Eagle, Eagle Brow. Details 01925
752371

LOW CARBON LYMM

Every second Monday of the month. 7.30pm,
Spread Eagle. 07786 074741 all welcome

4LYMM VOLUNTARY ORGANISATION

Meet every 2nd Monday at 7.30pm in the
Bridgewater Club, Whitbarrow Road.
All welcome. Tel 01925 756378 for details.

LYMM AND DISTRICT MIXED VOICE CHOIR

Every Wednesday 7.30 Lymm Methodist
Church. Contact 01925 601664.
cath@stones.co.uk



**LYMM
PARISH
COUNCIL**

Next meeting June 12
Lymm Parish Hall 7.30pm

Local girl now one of most sought after divorce and matrimonial lawyers in the UK

WITH offices in Manchester City Centre and locally in the Cheshire villages of Hale and Stockton Heath, BPS Family Law (formerly Betesh), was established in 1948 and have been providing legal services with a great deal of success and growth over many years.

Headed up by Caroline Swain who is widely renowned as one of the most sought-after divorce and matrimonial finance lawyers in the UK, Caroline routinely represents celebrities, high-profile clients, people in business and deals with multi-million pound disputes. She is listed in the 2017 edition of the Legal 500 as 'Recommended Lawyer'.

Caroline joined BPS Family Law in 2010 and became the first female Partner for the company in 2013. A local girl, Caroline was schooled at Sale Grammar School, attended University in Manchester and now lives in Stockton Heath with her family.

Caroline works closely with Harry Lipson who has represented client's both in matrimonial law and litigation for the past 40 years with BPS. Harry's extensive knowledge and experience in both areas of law complement one another perfectly especially when matrimonial cases involve businesses and employment matters.

Caroline is assisted by Karen Jones. Originally from Ireland Karen also lives in Hale. Karen is an expert in Child Law and represents families who find themselves in disputes over parental issues such as contact, holidays, education and religion. Karen's skills are sought by mothers, fathers and grandparents who wish to understand their legal rights. Karen understands how difficult disputes in relation to children are, and works in an empathetic and efficient manner to achieve the best outcome for clients and their children.

BPS Family Law offers a free initial consultation during which clients are fully appraised of their legal rights and options. That meeting will last for as long as you need. They offer a fixed fee for divorce proceedings and payment plans so clients can comfortably manage their legal fees. They can always schedule meetings to suit work and childcare commitments.

simplesolutions
Financial Management Ltd
INVESTMENTS & PENSIONS

INVESTMENTS

Our investment expertise will ensure that you have the most suitable investment to help you achieve your financial goals.

We use:

• Asset Allocation • Risk Profiling • Diversification • Correlation

PENSIONS

Pensions have changed since the March 2014 budget and you now have a lot more options to consider

TECHNOLOGY

Simple Solutions uses the latest technology to keep you updated, even when you are on the move or abroad, check out our website for more details.



The Base, Dallam Lane,
Warrington, Cheshire
WA2 7NG

Tel: 01925 266628 Fax: 01925 267043

www.simplesolutions.financial @SimpSolsFA

Simple Solutions Financial Management Ltd is authorised & regulated by the FCA. The registered office is 1st Floor, 67 London Road Stockton Heath, Warrington WA4 6SG. Registered in England & Wales. The company Re No 6920858



Thelwall Upholstery

FOR THE MOST COMPETITIVE RATES IN THE AREA

49 Knutsford Road, Grappenhall WA4 2NR

Call Sean on: 01925 604770 or mobile: 07799 228080

www.upholsterywarrington.co.uk

For all your upholstery needs

SPECIALISTS IN:

- Re-filling Cushions • Re-springing • Full Re-upholster
- Dining Furniture • Headboards

A wide range of sample books to choose from
All at competitive rates

PHONE FOR YOUR FREE ESTIMATES



Meet your MP Faisal Rashid

Faisal holds regular surgeries to discuss any issues that you may need help with. Private surgeries take place every Friday. Simply call the office on 01925 657600 to book an appointment, you can also send an email to faisal.rashid.mp@parliament.uk

Stay up to date with all current news, policies, and events at www.faisalrashid.com and keep an eye out for regular roving surgeries coming soon to a doorstep near you!

Follow Faisal on [@faisalrashid6](https://twitter.com/faisalrashid6) and facebook.com/FaisalRashidMP where you can find out about current issues, street surgeries and more.



**“Working hard for all communities”
Warrington South”**

Appleton | Bewsey & Whitecross | Chapel Ford & Old Hall | Grappenhall | Great Sankey North & Whittle Hall | Great Sankey South | Latchford East | Latchford West | Lymm North & Thelwall | Lymm South | Penketh & Cuddley | Stockton Heath

LEADERS IN FAMILY LAW.

Delivering the results when it matters

Specialising in:

Divorce & Separation
Financial Settlements
Child Related Matters



Stockton Heath 01925 912 277

Hale 0161 926 1430

Manchester 0161 834 2623

caroline.swain@bpsfamilylaw.co.uk

www.bpsFamilyLaw.co.uk





Navigating troubled waters?

“Living in South Manchester, I enjoy the village feel and love having the independent bars and shops nearby. The tram links to the city centre give a great sense of connection.”

Mark Heptinstall
Head of Family Team



Slater Heelis has provided expert advice to families for over 240 years.

Our team of Resolution family specialists are here to support you with first-class legal advice to provide the direction you need during separation. The team has expertise in divorce, separation, civil partnerships, finances and children arrangements. When it's appropriate for you, we are also able to offer collaborative law and mediation services.

Our family team all live in the South Manchester and Cheshire area. Living within the same community provides us with unique insight into what affects your daily lives. You are just a ride away from one of our offices in Sale, Timperley or Manchester. We have additional meeting facilities in Warrington.

Get in touch with our family team

family@slaterheelis.co.uk

0161 672 1247

slaterheelis.co.uk



slaterheelis LLP
SOLICITORS



@SlaterHeelisLaw



/slaterheelis

exceeding expectations

Free antiques and collectables valuation event



A FREE antiques and collectables valuation event will be taking place at the Village hotel on Wednesday May 30.

The experts of Lockdales Auctioneers will be providing free valuations from 11am to 3pm and 6pm to 8pm, at the hotel at 110 Centre Park Square, Warrington, WA1 1QA, with complimentary car parking on-site.

They will be valuing: Coins, jewellery, watches, banknotes, medals, antiques, clocks, pens, gold, silver, pre-1900 documents/books & maps, vintage toys and comics, scientific instruments and ceramics. No appointment necessary at this event.

Visitors will have the option to consign goods to auction (subject to terms), or accept a cash offer if they wish.

Lockdales recently broke the British record for a Rolex Submariner watch at auction. On October 11, 2017, they sold a c.1964 example with orange numerals for nearly £280,000 including premium.

This achievement was reported in the national media. The owner consigned the watch to auction at one of their events in the east of England. Many other star items have turned up at their events and they look forward to meeting the public in Cheshire.

Any questions please call Lockdales Auctioneers 01473 627110, email sales@lockdales.com or visit website www.lockdales.com



Commercial
Commercial Property
Litigation
Employment
Wills
Trusts
Probate
Personal Injury
Conveyancing
Crime
Family & Divorce

01925 231000

info@fdrlaw.co.uk

Warrington
Stockton Heath
Frodsham

www.fdrlaw.co.uk






LOCKDALES

AUCTIONEERS & VALUERS OF ANTIQUES & COLLECTABLES

COME ALONG TO OUR FREE VALUATION DAY NEAR YOU





Wednesday 30th May 11am-3pm & 6pm-8pm

Warrington Village Hotel, 110 Centre Park Square,
Warrington, Cheshire WA1 1QA

Thursday 31st May 11am-3pm & 6pm-8pm

The Mercure Chester Abbots Well Hotel,
Whitchurch Road, Christleton, Chester, Cheshire CH3 5QL

Free parking on-site subject to availability



WE OFFER DIRECT CASH PURCHASES FOR MANY ITEMS

DO YOU HAVE ANY OF THE FOLLOWING ITEMS TO SELL OR AUCTION?

Coins (GB & World, Sovereigns, Krugerands, Royal Mint, Proof Sets), Banknotes,
Medals, Silver, Gold, Jewellery, Watches,
Vintage Toys, Clocks, Books, Maps, Pens, Pre-1970's Comics,

ALL VALUATIONS ARE GIVEN BY OUR TEAM OF SPECIALIST EXPERTS






www.lockdales.com

(01473) 627110

sales@lockdales.com

New team member helps in Lymm's quest for health and wellness

LYMM Osteopathic Practice are happy to welcome Deb Instone, a professional Counsellor to their team of expert practitioners.

Pain and musculoskeletal problems can have a variety of origins, which is why they have a whole team of specialists on hand. These bring disciplines such as Osteopathy, Acupuncture

and Reflexology together in one location, giving a team approach to supporting patients.

Counselling is particularly useful method of helping deal with pain and discomfort - particularly when associated with stressful life events such as marriage breakdown, job loss or grief.

Deb Instone qualified as a

Counsellor in 2004 and since then, has worked in several different settings including the NHS, a Further Education College and various charities, in addition to running a busy private practice. Fully trained to work with individuals, children and couples, Deb has also taught Counselling for the past ten years, working closely with other Counsellors and healthcare professionals.

In addition to Counselling, the Practice also offers Acupuncture, a further way of treating painful conditions. Caroline Wardropper practices traditional acupuncture and treats a wide range of problems - with a special interest in musculoskeletal problems, sports injuries and fertility issues.

Traditional acupuncturists believe that the underlying principle of treatment is that illness and pain occur when the body's qi, or vital energy, cannot flow freely. There can be many reasons for this; emotional and physical stress, poor nutrition, infection or injuries are among the most common. Despite using ultra-fine sterile needles, most people find the treatment very relaxing and calming.

Other disciplines that may be helpful in the alleviation of pain



and discomfort are offered by Anne Delooze, an expert therapist who provides a range of treatments from aromatherapy massage to reflexology to reiki healing.

For more information, an appointment with, or simply advice from the Counsellor, an Osteopath, Acupuncturist, or any other practitioner, you can call Lymm Osteopathic Practice on 01925 752264. Or, alternatively, take a look at the website on www.lymmosteopathicpractice.co.uk. All practitioners have completed a high standard of professional training and are appropriately registered. They are always happy to help find the health solution that's perfect for you and your requirements.

Lymm Osteopathic Practice

Established 1979



SUZETTE PULMAN, N.D. M.R.N. D.O.

Registered Naturopath & Osteopath

DARREN HAYWARD, B.Sc. (Ost)

Registered Osteopath



We are both registered with The General Osteopathic Council (G.O.Sc.)

Open Monday to Saturday

Tel: 01925 752264

The Rise, 16 Grammar School Road, Lymm WA13 0BQ
(Easy Access Road Parking)

Registered with all major insurance companies

KEATE HOUSE CARE HOME

Quality person-centred care for your elderly loved one

Keate House is an independent family-run Care Home, specialising in providing Residential, Dementia, Respite and Day Care services for the elderly. Situated in the beautiful village of Lymm, our lovely purpose designed home is supported by our compassionate team, dedicated to providing only the best in quality person-centred care in our happy, stimulating and homely environment.

- Residential Care
- Respite Care
- Dementia Care
- Day Care

To talk to one of our Care Managers or to arrange a visit,

Call: 01925 752091 Email: info@keatehouse.com

Brookfield Road, Lymm, Cheshire WA13 0QL

www.keatehouse.com

Enriching life with quality care



Girl's golf rocks at Lymm



A TOTAL of 27 girls – aged 5-15 – turned up at Lymm Golf Club to take part in a fun-packed afternoon as part of the Girls Golf Rocks initiative.

The idea was to introduce girls to golf and the afternoon involved mini-putting, chip shots and drives – and plenty of fun.

PGA professional Graham Cox led the sessions with help from the junior organisers and a number of existing girl members of the club.

He said: "It's great to see children enjoying their first taste of the sport and having so much fun together – this is what junior golf is all about."

The project was sponsored by the England Golf Union who, having seen a lack of girls coming into the sport, invited the junior coaches at the club to help offer some "girl friendly" lessons, alongside their regular mixed junior classes.

The girls can now take up a five lesson course covering the basics of golf while having a good time with their new friends.

Lymm Golf Club offers a variety of junior lessons to suit boys and girls of all ages and abilities



Only the best is good enough!



Youngs Roofing Contractors Ltd
have been established for over 10
years, with over 20 years experience

- All aspects of roofing & scaffolding covered.
- Experts in both GRP & EPDM flat roofs, with 20 year guarantees.
- From full scale roofs to repair work.
- FREE no obligation quotations.
- All works guaranteed.
- NO JOB TOO BIG OR TOO SMALL

Youngs Roofing Contractors Ltd pride ourselves on our PROFESSIONAL, RELIABLE, AFFORDABLE & FRIENDLY service. We provide a complete expert range of professional roofing & scaffolding services throughout the NorthWest, using time served tradesmen.

We undertake installation & repair work on all domestic and commercial property types. From slate & tiled roofs to flat roofing structures, our team has the experience, the knowledge and the ability to undertake all of your requirements. All Youngs work comes with an exclusive 10 year workmanship guarantee, giving you confidence that you're well 'covered'.



If you need a skilled roofer in Warrington or surrounding areas of the NorthWest please contact us

T: 01925 568163 / 07878 741467
E: info@youngs-roofing-contractors.co.uk

www.youngsroofing-warrington.co.uk

WILLIAM H. LILL & CO.
part of **mlp law**

**Providing support & advice
whatever your needs**

**MLP Law provides a full range of legal
services to private and commercial clients**

We understand that our clients are individuals, business owners and corporates, which is why we provide support and advice whatever your needs. For us, it's about building relationships and providing a service to guide our clients along their business and personal journey.

Our Services

- Wills, Trusts & Probate
- Employment & HR
- Dispute Resolution
- Corporate & Commercial
- Property, Real Estate & Landlord/Tenant
- Residential Property & Home Moving



01925 753 170

www.mlplaw.co.uk

hello@mlplaw.co.uk

William H. Lill & Co.
part of **mlp law**



9 The Cross, Lymm, Cheshire, WA13 0HY

LawNet



LEGAL 500

Lexcel
Legal Practice Quality Award
Law Society Accredited

JV
JONATHAN VEIRA
jonathanveira.com

SONGS & TALES

An unforgettable evening with the international singer and raconteur

Lymm Baptist Church,
Higher Lane, Lymm,
Warrington WA13 0AZ

Friday 22nd June
7:45pm start
Tickets: £10

To purchase tickets: visit the church office or call 01925 752805. Alternatively, visit Lymm Electric, Bridgewater Street or The Annexe, Lymm Village Hall, Pepper Street.

CDs, DVD & Book all available to buy at the concert

20 YEARS 21 JUNE - 01 JULY 2018
Lymm Festival

'Best concert ever!'
'West End quality but here in my town!'
'Amazing!'

Lymm May Queen b with sunshine

THE annual Lymm May Queen Festival was blessed with sunshine after being a washout in recent years.

The gamble of switching the event from June to May paid dividends as glorious sunshine and warm weather greeted the annual parade through the village onto the May Queen Field.

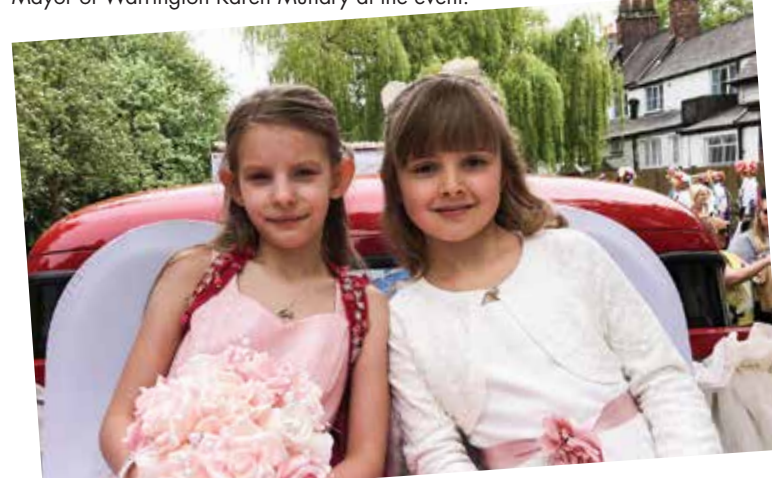
Town Crier Peter Powell, despite suffering with a knee problem, managed to lead the parade as usual.

Following the parade through the village, Jasmine Clews aged 11, a pupil at Oughtrington Primary School was crowned May Queen, while Neve Cole aged 8, from Statham Primary School was crowned Rose Queen.

May Queen Festival Chair Kath Buckley was delighted with the weather after taking the gamble of switching the event from June.

Established in 1889, the theme for this year's event was "celebration." Various community groups and local schools joined in the fun as hundreds of people lined the streets to watch the colourful parade.

New Parish council chairman Anna Fradgley was joined by the Deputy Mayor of Warrington Karen Mundry at the event.



More pictures and videos online at
www.warrington-wordwide.co.uk

20 YEARS 21 JUNE - 01 JULY 2018
Lymm Festival

HEADLINERS

- Tim Brooke-Taylor - comedian
- John Suchet - broadcaster
- Martin Edwards - crime writer
- Kyla Brox - Festival blues night

GET INVOLVED

- Scarecrow Trail
- Branching Out - community art
- Walkies! in aid of Guide Dogs
- Festival Sketch-crawl

GET INTO THE GROOVE

- David John Dee - 60's music
- LymmFest - 4 groups/4 venues/1 night
- Lymm Big Sing Choir + Guest
- Latin/Jazz quintet

THE GREAT OUTDOORS

- Historic Transport Day
- Open Gardens
- Canal Cruises
- Lymm Dam Ranger guided walk

YOUR CULTURE FIX

- Jonathan Veira - Bass baritone
- Local choral groups
- Festival comedy club

MAKE A SHOW OF IT

- Artists' Exhibitions
- Floral Art Group
- Pop Up Art Gallery
- Bonsai Show

FUN FOR ALL THE FAMILY

- FoodFest and Street Fun
- The Midnight Gang - David Walliams' play
- Family Garden Party
- Crafts for Kids at the Library

BACK IN TIME

- The Enigma Machine Story
- Heritage Centre exhibitions
- Local history walks

...plus LOTS, LOTS MORE

Mr Bloom is coming to Lymm Festival!

THIS year's Lymm Festival garden party will be bigger and better than ever with a special guest appearance by Mr Bloom from CBeebies.

The loveable gardener will perform his exciting half hour live show, featuring veggie stories, gardening games and catchy songs to entertain parents and tiddlers alike!

Mr Bloom is played by Ben Faulks, a successful actor, musician and writer.

Ben said: "I'm really excited to be bringing the fun of Mr Bloom's live show to Lymm Festival, especially as part of its 20th birthday celebrations."

Ian Marks, Festival Chair, said: "I have watched Mr Bloom on TV with my grandchildren and we are thrilled to be joined by him as our very special guest at the ever-popular garden party. We know that he is a well-loved character



who will entertain the whole family for this year's special 20th Festival."

The specially extended garden party takes place on June 30 in the beautiful grounds of Lymm Hall. As well as Mr Bloom, there is a varied programme of entertainment for the whole family and sponsors, Kids Planet, will be bringing baby-friendly activities, face painting and outdoor toys.

Tickets for all events are on sale now at lymmfestival.org.uk or by taking an order form to Lymm Electric.

Will YOU be there?

View latest programme at lymmfestival.org.uk

Pick up an Event Guide (from mid-May) at Lymm Library and various shops and bars in the village

Connect with us on Facebook: [LymmFestival](https://www.facebook.com/LymmFestival)



lensed



PRIMROSE HILL NURSERIES

**SUMMER
BEDDING
PLANTS &
HANGING
BASKETS
READY
NOW!**

**DISCOUNTS
FOR
QUANTITY**

*Caring Family
Business*

*Open 7 days
a week*

*Warrington Road,
High Legh,
Knutsford, Cheshire
WA16 0SQ*

Telephone
**01925
752635**

LYMM RUGBY CLUB PRESENTS
Posh Party On The Pitch

WHITE PARTY

SUMMER MARQUEE - SAT 9TH JUNE 2018



DRESS CODE: WHITE, LIGHT OR FANCY DRESS

Drinks reception 7.00pm

Carriages 1.00am

3 COURSE DINNER

FREE GLASS OF BUBBLES ON ARRIVAL

DANCE THE NIGHT AWAY TO 9 PIECE LIVE BAND 'VIP'
PLUS FREE PHOTOS FROM PHOTO BOOTH

£55.00 per head (tables of 8, 10 & 12 available)

TICKETS AVAILABLE FROM

John Cartwright - 07970 247646 - jpcartwright@talktalk.net
Rachel Hind - 07808 471113 - rachel@thehinds.co.uk



Family run scrap metal merchant based in Lymm,
covering all surrounding areas.

Free collection // Trade & Contractors // Household // Computer scrap

www.lymmmetalsltd.co.uk

Tel: 07562871158 // 07831107525
Email: lymmmetalsltd@hotmail.com

Waste License: CBDU175109

Less is More!

- Get paid quicker – Improving your cash flow
- Less time spent sorting old receipts – Free up countless hours each week.
- Less jargon and more proactive advice – Watch your business flourish.

Don't let these issues hold your business back.

To find out how we can remove your financial headaches call us:

01925 761600

or visit us at:

www.stylesandco.co.uk

styles and co.
chartered accountants

xero

SILVER PARTNER

Liberal Democrats gain seat

THE Liberal Democrats gained a seat on Warrington Borough Council when they captured a seat in the by-election caused by the death of former Mayor Sheila Woodyatt.

Local parish councillor Anna Fradgley came top of the poll in a five party contest in Lymm South ward, with Conservative Stephen

Taylor coming second.

The result leaves the Tories with only one seat on the borough council, the Liberal Democrats with 12 and Labour still massively in control with 45.

Full result in the by election was as follows:

James Ashington (UKIP) 25

Trish Cockayne (Labour) 328

Anna Fradgley (Lib Dem) 769

Stephen Taylor (Cons) 649

Michael Wass (Green) 24.

After the result was declared, Cllr Fradgley said: "I am overwhelmed by the result. It was a great victory for the Liberal Democrats. I also have very big shoes to fill following in Sheila's footsteps, but I am sure I can rise to the challenge.

"First and foremost, my priority is to Lymm and its residents. I shall continue to protect the green belt until the Lymm Neighbourhood Plan is in place. I will also continue to maintain the environment with Keep Lymm Klean and do more to improve the roads and safety. The next major issues that I work on with all the borough and parish councillors is youth provision and engagement and improving the business facilities available to Lymm.

"And of course, there will be other issues that will come up, which I will work hard on as they arise. Lymm is very fortunate to have a strong parish council and hard-working borough councillors and I only hope to contribute to this strength."

In the Lymm Parish Council by-election Conservative Andy Carter held on to the vacant seat, with the Liberal Democrats coming second.

The full result was: James Ashington (UKIP) 27; Andy Carter (Cons) 705; Trish Cockayne (Lab) 428 Joan Stocker (Lib Dem) 630.

New show site opens



YOUR Choice are proud to announce their brand new show site at Housing Units in Failsworth.

The show site opened its doors on the 21st of April and they are there every day Monday to Saturday from 10 am - 6 pm and Sunday from 10.30 am to 5 pm.

As an established family company Your Choice specialise in home improvements & building work. They can offer a full design and build service for Orangeries, Extensions, Garden Rooms,

Conservatory Roof options and more. Why not speak to one of their friendly design consultants at anytime without the need for an appointment!!

They are based at Housing Units, Wickentree Ln, Failsworth, Manchester M35 9BA. They are stationed on the left hand side as you go through the entrance. If you have any queries or would like any information on Your Choice services then call them free on 0800 169 4822.

HAVE YOU HEARD?

WE ARE

6th

IN THE COUNTRY OUT OF 201 GFE COLLEGES FOR PASS RATES!

Apply today at
wvr.ac.uk

Source: Further Education & Skills Funding Agency (March 2018)



DROP INTO OUR SHOWROOM TODAY!



CALL NOW FOR A **FREE QUOTE**

0161 643 7222

WWW.YOUR-CHOICE.UK.COM

590 MANCHESTER OLD ROAD
MIDDLETON, MANCHESTER, M24 4PW
OPEN 7 DAYS
MON - FRI 9AM - 5PM SAT-SUN 10AM-2PM



Transformed bus network is the cat's whiskers

WARRINGTON'S Own Buses, the new name for Network Warrington, has got its claws stuck into Lymm and south Warrington making wholesale improvements to the network.

The introduction of the "Cheshire Cat", a newly branded network servicing the south of the borough, has come into effect and offers a high frequency service, up to every 10 minutes, across a simplified and better connected network.

These transformational changes have also seen the introduction

of a new cutting-edge bus fleet. The Cheshire Cat branded buses include the latest transport essentials, including WiFi, extra leg room, luxury seats and USB charging points.

The Cheshire Cat network now also passes past Warrington Bank Quay station and Centre Park. Bank Quay Station is an important gateway to the town and until the Cheshire Cat did not have a regular bus service to and from the interchange.

Managing Director of

Warrington's Own Buses, Ben Wakerley, said: "I'm pleased that we're making big improvements to the south network that will hopefully have our customers purring. These are truly buses to be seen on!"

"Feedback from our customers about the new bus fleet and simplified route has been really encouraging so far."

"We are committed to investing in a high-quality transport network that provides an excellent service for as many residents as possible, and we're pleased to see how well the new Cheshire Cat fleet has been received."

"We aren't resting on our laurels. The company is going through some big changes – the Cheshire Cat and our rebrand being two major milestones – and we will continue to work hard to improve our service in all areas of Warrington."

For more information about the new Cheshire Cat fleet, visit warringtonsownbuses.co.uk or follow @WarringtonBuses on Twitter.

New timetable booklets are also available at the travel shop in the interchange or on the Cheshire Cat buses.

"Swinging Sixties" show for Lymm Festival

LOCAL singer David John Dee will be at this year's 20th Lymm Festival with another of his one-man "Swinging Sixties" tribute shows.

"Here I Go Again" will be a continuation of last year's extremely successful sell-out show, featuring

memory lane hits from a musically rich era.

It will be held on the opening night of the festival, June 21, at the Lymm Hotel.

From an extensive list of Sixties hits, David has revealed that this year's will feature songs of The Hollies, The Beatles, The Fortunes, Gene Pitney, The Kinks, The Turtles and The Temptations, Cliff Richard and Dusty Springfield, Sam Cooke, The Byrds, The Mamas and Papas and many others.

All proceeds from ticket sales will be donated back to the festival to go towards funding, specifically, the many children's events.

Tickets can be purchased from the Lymm Festival website or from the Festival box office.



from **Warrington's** own buses

every 10 mins

Cheshire Cat

Purring into Lymm

designer interior
comfy high-backed seats with extra padding
more legroom
wood-effect floor
lounge seating at the back
sunroof windows
free wifi & USB charging
next stop announcements
contactless payments accepted

Stylish new buses
now to both rail stations
and the town centre

Cheshire Cat

warringtonsownbuses.co.uk
01925 634296



LYMM PARISH COUNCIL NEWSLETTER

Chairman's Report 2017 -2018

Dear Residents of Lymm,

I have been extremely proud to serve as Chairman this year. All Councillors and the Clerk have worked extremely hard to deliver a number of achievements including:-

- Formation of the Neighbourhood Planning Group to guide the future development of Lymm and, in particular, to protect the green belt
- Securing the future of the Library
- Completing the renovation of the railings at the lower dam and installation of lighting on the canal bank
- Completion/submission of a petition to prevent illegal parking on Pepper Street
- Acquisition of a second speed detector to monitor traffic entering Lymm
- Initiation of a Youth Engagement Project to address the concerns of groups gathering around The Cross
- Creation of a Parish Council Environment Team to carry out maintenance services previously supplied by the Borough Council
- Formation of a new Environmental Group with budgetary powers to initiate projects for improvements to the village appearance

Sadly this year we lost two stalwarts, Sheila and Neville Woodyatt, who both served as Parish Councillors for many years. In memory of the couple we have mounted plaques on two benches that sit side by side next to The Cross. Discussions are also on-going about naming a street in their honour.

I am pleased that Lymm now has a new Post Office and the Parish Council is supporting their application for a cash machine.

The Parish Council would like to thank Lymm in Bloom and Lymm Gardening Club for continuing to make the village so attractive. We would like to thank all the volunteers and organisations for their events – Duck Race, May Queen, Lymm Festival, Historic Transport Day, Dickensian Day and Carols Round the Cross. Many people work tirelessly behind the scenes and they deserve our thanks.

The Council has taken on even more activities this year and has welcomed two new councillors Ann Johnstone and Andrew Carter. I feel confident that the Parish Council will continue to serve residents and help to make Lymm a wonderful place to live, work and visit.

Cllr John Bamforth

Contact information:

Clerk of the Council: Amanda Riley - 07585 952445
clerk@lymmparishcouncil.gov.uk

Parish Council Website:

www.lymmparishcouncil.gov.uk

Lymm Parish Council 2017-18



Name: Cllr Anna Fradgley (Chairman)
 Address: 34 Cyril Bell Close, Lymm, WA13 0JS
 Telephone: N/A
 Email: cllrafradgley@sky.com



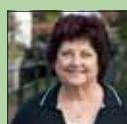
Name: Cllr Geoff Hawley (Deputy Chairman)
 Address: 27 Brook Road, Lymm, WA13 9AH
 Telephone: 01925 754113
 Email: ghawley@freeuk.com



Name: Cllr John Bamforth
 Address: 24 Elm Tree Road, Lymm, WA13 0NH
 Telephone: 07795 831044
 Email: johnbamforth@btinternet.com



Name: Cllr Bob Barr (OBE)
 Address: 2A Danebank Road, Lymm WA13 9DH
 Telephone: 01925 751817
 Email: r.barr@peartrees.com



Name: Cllr Kath Buckley
 Address: 16 Hardy Road, Lymm WA13 0NX
 Telephone: 01925 752439
 Email: kjbuckley@hotmail.co.uk



Name: Cllr Andrew Carter
 Address: 98 Bucklow Gardens, Lymm, WA13 9RQ
 Telephone: 01925 758275
 Email: acarter@lymmparishcouncil.gov.uk



Name: Cllr Andy Cooper
 Address: 4 The Paddock, Lymm WA13 9JQ
 Telephone: 01925 756723
 Email: andycooper.lymmipc@gmail.com



Name: Cllr Graham Gowland
 Address: 32 Wychwood Avenue, Lymm, WA13 0NE
 Telephone: 01925 751599
 Email: lymm@gowland.me.uk



Name: Cllr Joe Griffiths
 Address: 9 Manor Road, Lymm WA13 0AY
 Telephone: 01925 754651
 Email: joe.griffiths@lineone.net



Name: Cllr Ann Johnstone
 Address: 3 Lakeside Road, Lymm, WA13 0QE
 Telephone: 01925 755554
 Email: ajohnstone@lymmparishcouncil.gov.uk



Name: Cllr Ian Marks
 Address: 80a Whitbarrow Road, Lymm WA13 9BA
 Telephone: 01925 753051
 Email: imarks@warrington.gov.uk



Name: Cllr Peter Powell
 Address: 89 Cyril Bell Close, Lymm, WA13 0JU
 Telephone: 07851 141778
 Email: ppowell215@btinternet.com

Hale

CARPETS & FLOORING

NEW SHOWROOM OPENING SOON!

11 London Road, Stockton Heath WA4 6SG



Find the perfect flooring for your home in our showroom plus expert design and installation advice. We have a huge range of quality carpets, Karndean Design Flooring, Polyflor, Harvey Maria and more. Free measuring and quotation service available.

Lymm Road, Thelwall, Warrington, WA4 2TG
01925 756275 | halecarpets.com

f t i p h houzz

EXCHANGE YOUR GOLD AND SILVER FOR INSTANT CASH



All items of jewellery accepted

Did you know...?
We accept silver jewellery, cutlery, tea sets, spoons, cigarette cases, candlesticks, trophies, trays, medals, coins and pocket watches.

ROLEX WATCHES WANTED! ANY CONDITION

Open: Tuesday-Saturday: 10am - 5.30pm
1 London Road, Stockton Heath
(First floor entrance on Fairfield Road)
07544 486 621

CHESHIRE GOLD & SILVER BULLION DEALER

Domestic IT Support

- PC/Network Support
- Websites/Social Media
- Free Site Surveys/Audit Reports
- Cloud Backups/Data Recovery
- GDPR Website Checks

GDPR Compliance Check

aspire Computers Ltd

01925 251143
sales@aspire-computers.com
www.aspire-computers.com

WELCOME TO THE IDEAL BUILDING COMPANY




Our mission is to deliver a high standard of building work at competitive prices and give complete client satisfaction every time.

Our services include: Extensions & Conversions, Complete Refurbishments, Loft Conversions, Structural Works, Homes Offices, Kitchen & Bathroom fittings, Electrical, Heating and Plumbing works, Full Plan & Design Service and General Building work.

For a FREE consultation please call
01925 730888

Urban Building Projects Ltd.
410 Europa Boulevard, Gemini Business Park, Warrington, Cheshire, WA5 7TR
Email: info@urbanbuildingprojects.co.uk Web: www.urbanbuildingprojects.co.uk

HAAS ELEC SA LABG

ChipsAway

Scratches and scuffs won't dent your pocket

Quality, professional mobile car paintwork repairs at a fraction of traditional body shop costs.

- ✓ Bumper scuffs
- ✓ Paintwork scratches
- ✓ Minor dents




Call or email Mark now to arrange your free estimate

07445029415 / 0800 0287878 mark.chorlton@chipsaway.co.uk



www.chipsaway.co.uk


REPAIRS FULLY GUARANTEED



Kids Karate (Includes Weapons Training)
Muay Thai Boxing
Krav Maga Self Defence
Combat Fitness Classes
Birthday Parties

For class times please visit our website
www.pma.warrington.co.uk

Unit 5 (Upstairs), Palatine Industrial Estate,
 Causeway Avenue, Warrington WA4 6QQ



SKIN-HUB

Nurse Led Aesthetics
 Lymm Warrington

Anti-wrinkle injections
 1 area £115...2 areas £155...3 areas £195

Dermal Fillers
 From £100 (0.5ml)....£180 (1ml)

Chemical Peels
 From £80 incl 5 day post peel home care pack

20% OFF
 When you spend over £100

Call 07835 965929 or 01925 558769 for a free consultation
 visit skin-hub-treatments.com for full price list
 19B The Cross Courtyard, Lymm WA13 0HR




BIKETUTOR

Join one of our cycle maintenance classes to learn how to perform basic maintenance from only £10.

SPECIALIST CYCLE REPAIR & SALES



01925 594 633 cheshirecycles.com

- All brands and types of cycles catered for, whether it's a puncture or full service
- Cytech certified mechanics operating from a fully equipped South Warrington workshop
- Mobile Servicing available throughout Cheshire at your home or place of work

Cycle maintenance skills, the most valuable skill a cyclist can own

ONE of the most forgotten and perhaps, most useful skill is being able to look after your own bike.

From the seasoned professional to the absolute novice, having the basic's at least in your repertoire can save a ride or even better, save your life.

We have found that pre ride checks can nearly eliminate catastrophic failures and by doing so, keep you and the bike much safer.

The popular 'M' check is recommended to keep the bike running safely and entails a 5 point check (minimum) in the shape of an M from back to front.

1) Starting on the rear wheel, make sure the lever/nut is tight to ensure no movement of the wheel out of the frame.

2) Check the saddle and post are tight with the relevant tool to keep the height consistent – a moving saddle is challenging at best.

3) Take the pedal and arm and shake them, if they are loose tighten them up to keep them contained until professional mechanical inspection can be obtained.

4) Place the front wheel in between your legs and try to twist the handlebar, check the bolts are tight before riding.

5) Much like the rear wheel, check the front wheel lever/nut is tight. Additionally, visual checks to the bike including tyres are key to look out for cracks and wear.

Tyres should be inflated before use and brakes should work to slow the bike.

To help keep Warrington cycling, Cheshire Cycles now offer maintenance courses from our Appleton Thorn Workshop, head over to www.cheshirecycles.com/training for more information



Sooty man delighted to be "Delgrubbed"



LYMM'S best known puppeteer – Peter (Matthew) Corbett, of Sooty fame – has had his faith in people restored by an unknown gardener.

He recently created a piece of art out of an old tree stump and a few plants which he placed on the Bridgewater Canal towpath in the middle of Lymm, so it could be enjoyed by everyone.

"Call me a cynic," he said, "but I honestly didn't think it would be too long before one of our less likeable youths, who have plagued our beautiful village recently, ripped the plants out, or worse, rolled the whole edifice into the canal."

"But WHOA! Instead of finding plants strewn about as I had half expected I was amazed to see someone had actually added to the display!"

"There are a couple of daffodils in bloom and I certainly didn't put them there!"

The incident has reminded Peter of an incident many years ago when he was "the man behind Sooty" – the television bear created by his father, Harry Corbett.

One of the many episodes Peter wrote during the 25 years he was presenting the show was entitled "Delgrub" – the word "burgled" in reverse.

The gist was that someone breaks into your house, but instead of stealing or causing damage, they tidy the place up, repair the dodgy chair leg, give the kitchen a lick of paint and, before leaving, mow the lawn. Then they leave you a box of chocolates.

Peter had to smile at how similar the modern day "DELGRUB-ING" on the towpath was to the story he wrote so long ago – and he admits it has restored his faith in people.

But he joked: "Whoever the 'perpetrator' is, I thank you for improving the display but please, next time can you mow the lawn and fix the chair leg?"

Lymm biker wins a place on the podium



LYMM motor cyclist Sean Neary picked up a second place and a fifth in round two of the Ducati TriOptions Cup at Brands Hatch – leaving him in third place in the rider standings on 54 points.

Afterwards the team Zoek rider said: "P2 in today's race, I'll take that! I really wanted that win but wins don't come easy in this class! Big thanks to the Zoek Racing Team and all our sponsors for always backing me no matter what. I didn't score any points in the first three races last year so it's a big improvement!"

Neary was up in the top four throughout free practice and qualifying and began the first of two 15 lap races from a second row grid position in fourth place. As the lights went out Neary got a

good start and was up to second place on the first lap. He took the lead on lap three but was pushed back to second place one lap later when Rob Guiver took over the top spot.

Although he was never more than a few tenths away from the leader, Neary could not find a path through to snatch the lead on the short and tricky Indy circuit and towards the end of the race decided to opt for a safe second place and 20 championship points sooner than make a risky move and perhaps throw it all away.

By the time the second race got underway the rain had arrived making for tricky conditions. Neary held the lead for a couple of laps but dropped back to finish the race in fifth place.

Obituaries

Roger Thornton



THE funeral has taken place of Roger Henry Thornton, aged 59, of Booths Hill Road, Lymm, who died at home on April 4.

Mr Thornton is survived by an elder brother, Phillip.

The funeral took place at Altrincham Crematorium on April 23.

Funeral arrangements were by John Burrows and Sons of Lymm.

Vera Offord



THE funeral has taken place of Vera Offord, aged 94, of Keate House, Brookfield Road, Lymm, who died on April 16.

Mrs Offord had enjoyed living at Keate House for seven years.

Her funeral took place at Altrincham Crematorium on April 25.

Funeral arrangements were by John Burrows and Sons of Lymm.

Former GB athlete who became wildlife photographer to visit Lymm

LYMM Photographic Society welcomes Tesni Ward as their guest speaker on Wednesday, June 13 at 7.30 pm, in The Function Room at The Spread Eagle, Lymm.

Visitors are most welcome to attend this unique opportunity to listen to one of Britain's up and coming photographers and view her stunning images.

Tickets cost £4.00 for an adult; £7.00 for a couple and £2.00 for Under 18s, and can be purchased at the door on the night.

Tesni is a former Team GB athlete who, through injury, was forced to give up her sporting career. Having had a long term interest in photography she decided to become a professional Wildlife and Nature photographer using her images to promote conservation, and educate people on the struggles faced by wildlife, and what can be done to help them.

An Ambassador for Olympus and Benro, Tesni has featured in conference sessions in recent Photography Shows at the NEC, so this is an opportunity not to be missed.

Anne Watkin



THE funeral has taken place of Elizabeth Anne Watkin, nee Pearson, a former Lymm May Queen, who died, aged 61, at her home in Coventry on February 8.

Her ashes were buried at St Mary's Church, Lymm with her parents, William and Ida, with a service conducted by the Rector, the Rev Beverley Jameson.

Mrs Watkin was born in New Road, Lymm and thought much about the village in the final months of her life.

Her husband, Ian, told Lymm Life his wife subscribed to the magazine and wanted prints of Lymm paintings, one of which was of Lymm Bridge and the house adjoining it and another a painting of Lymm Cross from the 1840s, a copy of which she received from her sister, brother and families on her birthday last December.

Mr Watkin said: "No-one knew she particularly wanted this painting. God moves in amazing ways."

Mrs Watkin is survived by her husband, her son and daughter Paul and Kathryn, sister Carol Kerry and brother David Pearson.

Funeral arrangements were by John Burrows and Sons of Lymm.

Established 1878

John Burrows & Sons
Fourth Generation Independent Family

Funeral Directors

Friendly & Professional Service
Day or Night ~ J. Tandy

The Old Smithy, Mill Lane, Lymm,
WA13 9SE Tel: (01925) 752501

Golden Charter
Funeral Plans

www.johnburrowsandsons.co.uk

twentyfour
seven
design & print ltd

01925 240247
WWW.247PRINT.NET

Traditional Values
MODERN IDEAS

CLASSIFIED

FREEPHONE 0800 955 5247 to advertise

ACCOUNTANCY & BOOKKEEPING

BOOKKEEPER/ACCOUNTANT. Licensed for maintaining financial records, VAT Returns, Payroll Service, Management Accounts, SAGE Software Consultancy. **Contact: 07815 617914.** (G*)

EQUESTRIAN SUPPLIES & ANIMAL FEEDS

STABLES SADDLERY. Est 1964. Good stock of all equestrian supplies and animal feeds. Also storage available for trailers, caravans and household goods etc. **Tel: Barbara Williams on Lymm 752762.** (G*/18)

OPTICIANS

ADCOTT OPTICIANS. State of the Art opticians in the heart of Lymm Village. Comprehensive sight tests and a wide choice of spectacles tailored to you, whatever your budget. **01925 757075** (G*/18)

TUITION

JustEnglish
SPECIALIST ENGLISH TUITION

One-to-One Tuition
Experienced Teacher, Examiner and Moderator
100% Pass at GCSE 2017
Call Wendy 07863 888 599
www.justenglishlymm.co.uk (G*/19)

CARPETS, CURTAINS & INTERIORS

Paul Bains Flooring Solutions Ltd



- CARPETS - WOOD - LAMINATES -
- DECORATIVE VINYL FLOORING -
- FREE CHOOSE AT HOME SERVICE -

101 Bucklow Gardens, Lymm WA13 9RN
T: 01925 748549 M: 07973 376224
E: paulbainsflooring@msn.com
www.paulbainsflooringsolutions.co.uk (G*/18)

GARDENING SERVICES

Beechwood Industries Ltd
Landscape Management Solutions

- Garden Maintenance
- Lawn Care
- Landscape Design
- Construction
- Paving
- Tree Surgery
- Free Assessment
- Free Consultation

Contact us on:
07749 253 308
01925 860544
www.beechwoodindustries.co.uk (G*)

PAINTING & DECORATING

BENJAMINS PAINTERS AND DECORATORS. 20 years professional experience in commercial and domestic decorating, wallpapering, coving, interior and exterior work. **Telephone 07837 452514 or 01925 755198.** (G*/18)

PAYROLL

WHY TRY TO BE A PAYE EXPERT? Watkinson Black can provide a cost effective payroll service, releasing you to concentrate on your business. **For further details please phone: 01925 413210 or e-mail: info@warringtonaccountants.co.uk** (G*)

WINDOWS & GLAZING

LYMM WINDOWS & CONSERVATORIES LTD, BY NEIL COPELAND. Specialist in uPVC double glazing windows, doors, porches, conservatories, also fascias and guttering. FENSA registered. All work guaranteed. **Tel: 01925 756138 / 07961 361550.** (G*/19)

MOTORING SERVICES

CAR SALES

PARKVIEW CAR SALES

We buy and sell
QUALITY CARS
Best price paid
Telephone Peter on
01925 575737 /
07957 545479
23 Padgate Lane
Padgate, Warrington
Cheshire, WA1 3RS (G*)

CARPET CLEANING

A1 STAINBUSTERS. A Warrington company cleaning carpets, hard floors, Upholstery (Leather + fabric) and curtains in situ. **FREE** quotes for domestic and commercial. Approved carpet cleaners for Hancock and Woods for over 10 years. **Call John on 01925 852088 or 07765 314080** (G*/18)

J C SLAVIN
Landscapes & Garden Maintenance

Landscape Design • Garden Landscaping
• Plant Hire • Flagging • Fencing • Tree Hedge Pruning

01925 756 839 / 0161 775 0297
Mob: 07737 655 211
www.jcslavin.co.uk (G*/18)

PLUMBING

CL PLUMBING AND GAS SERVICES
Local honest plumber covering all aspects of plumbing and gas works. Boilers and central heating installed and repaired. Bathroom suites supplied and fitted. Cookers and fires fitted. Landlord gas safety checks. All plumbing emergencies - 24 hour call out. No job too small, OAP Discount rates. **Tel Craig 01925 819692 07851 405466 www.warringtonplumbingservices.co.uk** (G*/19)

Gas Safe Registered Engineer

Andy Gas of Lymm, specialist in:
Boiler upgrades, servicing, repairs to all domestic heating and gas appliances.
For a professional service call Andy
07753 838129 or 01925 753712 (G*/19)

HANDYMAN

Handyman Services
Home, Office & Garden

Internal and External Painting • UPVC Window and Door Repair and Replacement
Mechanism/Lock Changes • Soffits and Fascias
Gutter Cleaning, Repair and Replacement
Flagging • Fencing • Patios • Jet Washing
All Garden Work • All DIY
Call today for a **FREE** quote

Tel Neil: 01925 757905 (Lymm Based)
Mob: 07813 201850
handymanserviceslymm@hotmail.co.uk (G*/18)

CLEANING SERVICES

arleys angels

- Spring Clean Specialists
- Presenting your home for sale
- Moving house
- After building work cleans

01925 266834
... because you're worth it! (G*)

SIMPLY THE BEST CARPET CLEAN YOU will ever have. Cleaners UK Ltd. Est 28 yrs. Have your carpets & sofas beautifully deep cleaned leaving them fresh smelling & colour restored. Latest & best methods. Dry/steam. Leather cleaning, oriental rug specialist. Professional, reliable & affordable. **For more info call Neil Riley on 01925 264989/ 07831 336060 www.cleaners-uk.net** (G*/19)

ELECTRICAL CONTRACTOR

TRUST PROPERTY ELECTRICAL SERVICES. NICEIC Part P Approved Contractor. All Electrical work undertaken. Inspection & Testing & PAT Testing. All work certified & guaranteed. **Call Tim on 07754409906 or 01925 601055** (G*/18)

MORTGAGES

INDEPENDENT MORTGAGE ADVICE. For local, impartial and professional advice on all aspects of mortgages contact Darren Simpson at Amathus Financial Services on **07708 975122 or 01925 399999** (G*/18)

RE-UPHOLSTERY

Orchard Soft Furnishings

RE-UPHOLSTERY
CURTAINS • BLINDS
FREE MEASURING & FITTING
TEL: (01925) 756388
www.orchardsoftfurnishings.co.uk (G*/18)

TAXI / PRIVATE HIRE

Horn's

Airport Transfer & Taxi Specialists
CALL MARTYN: 01925 751761
MOBILE: 07881 786250 (G*/18)

Orbit News Ltd
Celebrating
50 YEARS
Publishers of:
Lymm Life
.Warrington-Worldwide
Village Life
Culcheth Life
Frodsham Life
Lifestyle

Banner & Co

Independent Residential Sales and Letting Agent



EXPERIENCE

A BETTER WAY TO MOVE HOME THIS
SUMMER AND PICK THE AGENT
WHO WILL GET YOU THE
BEST PRICE
FOR YOUR PROPERTY



01925 753636 www.bannerandco.co.uk

Please note that if you have already instructed another agent, we would advise you to check any agreement you may have to ensure you are not liable for more than one commission by instructing us as your agent

