

**Lymm**

# Life

**FREE EVERY MONTH**

**December 2017**

**Issue: 225**



**urban**

BUILDING PROJECTS LTD

**Extension &  
Building Renovation  
Specialists**

**Tel: 01925 730888**

[www.urbanbuildingprojects.co.uk](http://www.urbanbuildingprojects.co.uk)

## Santa's float routes

**Page 14**



**LYMM  
PARISH  
COUNCIL**

Approved by Lymm Parish  
Council as the official  
magazine for Lymm

**Sextons**

2 Eagle Brow, Lymm, WA13 0AD

**An ideal  
Christmas present**

**A Sexton's  
Gift Voucher**

Open 7 days a week!

[www.sextonsbakery.co.uk](http://www.sextonsbakery.co.uk)

**01925 753669**

**Hale**



CARPETS & FLOORING

**See our main advert  
on page 20**

01925 756275

[www.halecarpets.com](http://www.halecarpets.com)

**Banner & Co**

Independent Residential Sales  
and Letting Agent

**See our main advert  
on the back page  
for details**

**01925 753636**

**eden**

RESIN BOUND SPECIALIST



[www.eden-resin.co.uk](http://www.eden-resin.co.uk)

**01925 263125**

**Regular news updates at [www.lymmmlife.co.uk](http://www.lymmmlife.co.uk)**



**Editor**  
Gary Skentelbery

**Production**  
Paul Walker

**Advertising**  
James Balme  
Freephone  
0800 955 5247

**Editorial**  
01925 623633

**Email**  
info@lymm.life.co.uk

**Websites**  
www.lymm.life.co.uk  
www.culchethlife.com  
www.frodshamlife.co.uk  
www.warrington-  
worldwide.co.uk  
www.warrington.tv

**Address**  
New Media Centre  
Old Road Warrington  
WA4 1AT

*Lymm Life is published  
monthly by Orbit News Ltd.*

*The contents of this magazine  
are fully protected by copyright  
and nothing may be reprinted  
or reproduced without prior  
permission of the publishers.*

*The publishers are not liable for  
any statement made or opinion  
expressed by third parties in this  
publication.*

*Printed by TwentyFourSeven*

# Editor's Comment



CONGRATULATIONS to everyone who got involved in the Lymm Neighbourhood Plan event at the village hall - it was fantastic to see that more than 600 people turned up.

It will really help make a difference for the future of our village if we have a strong Neighbourhood Plan.

But this is just the beginning of a long and hard journey to help look after our village, in particular the green spaces, for future generations to enjoy.

Since we launched Lymm Life way back in the last century (1999) development in the village has been pretty relentless and I would not be surprised if the number of new properties built since then was above four figures.

Each month we aim to deliver

over 5,000 copies of Lymm Life to local properties. Sadly due to the nature of free distribution and the fact there are new properties, there will always be some that get missed.

But if you normally receive it and you don't get a copy please let us know (preferably by email) so we can pass on the information.

On the subject of deliveries it is fantastic to see a Post Office facility re-opening in the village centre which will help increase footfall just in time for the busy Christmas period.

This is a family run business with more than 30 years experience of running post offices and will be based in the former Laura's Choice premises.

We wish it well and hopefully it will help boost trade at surrounding

businesses.

Finally it is almost time for the annual Lymm Dickensian Festival - please turn out and support this fantastic event and support all those volunteers who give up their time to ensure it takes place.

**Deadline for the  
January 2018  
issue of  
Lymm Life is  
November 28**

## N & J STANHOPE

### Coal and Log Supplies

#### Christmas Trees from Dec 1

Best Quality Coal

Smokeless Fuel

Logs Supplied in Bags and Bulk

**Open 6 Days. Closed Sunday**

Broomeedge Farm

Burford Lane, Lymm WA13 0SE

**Tel: 752830**

**Mobile: 07979 785 421**



**Reflexology - Acupuncture - Herbal Medicine**  
**Bowen Technique - Hypnotherapy - Massage**  
**Physiotherapy - Osteopathy - Homeopathy**  
**Colonic Hydrotherapy - Counselling**  
**Nutrition - Stop Smoking - Weight Loss**  
**Chiropody - MLD - Sports Massage**

**Gift Vouchers available, ideal for a Christmas Gift!**

Please call to find out more  
**Tel: 01925 730123**

www.cheshirenaturalhealth.co.uk  
Cheshire Natural Health, Beehive House, Tarporley Road, Stretton, Warrington

## KEATE HOUSE CARE HOME

### Quality person-centred care for your elderly loved one

Keate House is an independent family-run Care Home, specialising in providing Residential, Dementia, Respite and Day Care services for the elderly. Situated in the beautiful village of Lymm, our lovely purpose designed home is supported by our compassionate team, dedicated to providing only the best in quality person-centred care in our happy, stimulating and homely environment.

- Residential Care
- Respite Care
- Dementia Care
- Day Care

To talk to one of our Care Managers or to arrange a visit,  
call: **01925 752091** Brookfield Road, Lymm, Cheshire WA13 0QL  
Email: [info@keatehouse.com](mailto:info@keatehouse.com) Web: [www.keatehouse.com](http://www.keatehouse.com)

*Enriching life with quality care*



INVESTORS  
IN PEOPLE



CareQuality  
Commission



LL12.17





# Important step forward for heritage centre

LYMM Heritage Centre took another important step forward with the opening of its second exhibition.

Look@LYMM does just that with a collection of photographs spanning the century from 1860 to 1960. The team developing the exhibition were also looking for extra, exciting ways to use photographs to bring historic Lymm to Life so there are

plenty of innovative ideas including 3D and large scale images. There is even a replica of Lymm stocks with the chance for kids to dress up for their own photograph.

A booklet accompanying the exhibition takes visitors on a short photographic walk through history round the centre of the village.

The exhibition is centred round

the original photographs and collection of local man Alan Taylor but also includes images from the collections of local people who were keen to take the opportunity to share their pictures with the wider public.

The centre now has an active team of over 40 volunteers and is open to the public from 12 till

4 from Thursday till Sunday every week.

The centre can also be opened at any time for visiting groups with tours and talks available.

For more information visit [www.lymmhc.co.uk](http://www.lymmhc.co.uk), email [lymmheritagecentre@gmail.com](mailto:lymmheritagecentre@gmail.com) or call 01925-754080.

## Story of Lymm's war heroes

A BOOK dedicated to men from Lymm who lost their lives in World War 1 and World War 2, published by two local women three years ago, has been re-printed to meet demand.

"Lymm at War" was written by Madge Bennion and Lynn Smith and has already been bought by many local people and sent to friends and family all over the world.

The two authors did not realise, when they decided to write the book, the emotions they would go through.

They said: "People were very generous in supplying stories, letters and photos. Without this help, we would not have the book that we have now."

In addition to the stories of local men, the book has recipes from the time, such as trench cake and when it was originally published, two of the cakes were made by friends and handed round to people.

"Nobody quite believed how good these wartime recipes were and many wanted to try making it for themselves."

The book not only tells the stories of the men who went to war - many of them never to return - but also the stories of the wives, parents and family who were left behind.

It can be purchased for £7 from Lymm Library.



### Sophies Soft Furnishings

Curtains • Roman Blinds  
Cushions • Tiebacks • Poles  
Tracks • Valances • Pelmetts

We design, make and fit to meet your exact requirements.

For free home visit or advice ring  
**Anne on 01925 754446**

[www.sophiessoftfurnishings.co.uk](http://www.sophiessoftfurnishings.co.uk)

**We Clean Ovens ...so you don't have to!**

Call us today to leave your cooking appliances sparkling, using our eco friendly products.

**oven**  
oven valeting service  
Local | National | Affordable

Our oven cleaning experts will leave you free to enjoy your valuable leisure time.

Call for LOCAL service  
**01925 453377** [oven.co.uk](http://oven.co.uk)

**fdr law**

Commercial  
Commercial Property  
Litigation  
Employment  
Wills  
Trusts  
Probate  
Personal Injury  
Conveyancing  
Crime  
Family & Divorce

**01925 231000**  
[info@fdrlaw.co.uk](mailto:info@fdrlaw.co.uk)  
Warrington  
Stockton Heath  
Frodsham

[www.fdrlaw.co.uk](http://www.fdrlaw.co.uk)

[f](#) [in](#) [G](#)

**Rosebank & Naturegarten**

15 AND 30 HRS FUNDED PLACES AVAILABLE

We have great spaces and places for babies and children at Rosebank and Naturegarten.

Part time, full time sessions available for term time and all-year round

In the New Year we are expanding with additional places for babies through to pre-school.

THE ROSEBANK CENTRE & ROSEBANK NATUREGARTEN  
PEPPER ST  
[WWW.RNGROUP.CO.UK](http://WWW.RNGROUP.CO.UK) 01925 320161

## What's On in conjunction with Lymm Parish Council



**December 12**  
**LYMM PARISH COUNCIL**  
Lymm Parish Hall 7.30pm

### LYMM THURSDAY EVENING BRIDGE CLUB

Lymm Village Hall every Thursday 7pm

### MAPLE LODGE ART GROUP

Meet each Wednesday 9.30am - 12.30pm  
Oughtrington Community Centre, Lymm  
Details: 01925 755126

### ROTARY CLUB OF LYMM

Every Wednesday at Statham Lodge Hotel  
7.15pm for 7.30pm  
Contact the secretary 01925 650189

### LOVING HEARTS & HANDS

Knitting for charity at Lymm Methodist Church,  
2nd and 4th Thursday each month.  
1.30pm - 3pm. Details: 01925 753298

### MARKET LUNCHES

Eagle Brow Methodist Church  
3rd Thursday in the month  
Light lunches 12 noon till 2pm. All proceeds to  
Youth For Christ and YMCA Room at The Inn

### LYMM SCOTTISH COUNTRY DANCE CLUB

St Mary's Church Hall  
Second and fourth Fridays (Sept - May)  
7.30pm. Details: 753853

### GARDENING CLUB

Meet Third Wednesday of the month  
Lymm Baptist Church, Higher Lane. 7.30pm  
Visitors welcome. £2 includes tea and cake

### LYMM FLORAL ART GROUP

Lymm Village Hall  
Third Monday of the month (except August)  
at 7.30pm

### LYMM PHOTOGRAPHIC SOCIETY

Every 2nd and 4th Wednesday  
(ex July & Aug), 7.30pm  
Spread Eagle pub, Eagle Brow.  
Details: www.lymmphotosoc.org.uk

### LYMM WINE AND BEER CIRCLE

3rd Wednesday of the month, 8pm  
The Spread Eagle Hotel  
Details: 01925 604400

### LYMM CONCERT BAND

Rehearsals every Thursday evening  
United Reformed Church, 8pm.  
Details: 01925 752934

### THE VENUE, LYMM

Chess Club every Monday from 6pm,  
Open Mic Night every Tuesday from 9pm,  
free chinese meal and 2-1 cocktails  
every Wednesday, Live Music every  
Thursday and Saturday

### LYMM WI

Every second Wednesday, 2-4pm at Lymm  
Youth and Community Centre. Visitors  
welcome.

### LYMM BOOK CLUB

Second Thursday of the month 7.30pm,  
Spread Eagle, Eagle Brow. Details 01925  
752371

### LOW CARBON LYMM

Every second Monday of the month. 7.30pm,  
Spread Eagle. 07786 074741 all welcome

### 4LYMM VOLUNTARY ORGANISATION

Meet every 2nd Monday at 7.30pm in the  
Bridgewater Club, Whitbarrow Road.  
All welcome. Tel 01925 756378 for details.

### LYMM AND DISTRICT MIXED VOICE CHOIR

Every Wednesday 7.30 Lymm Methodist  
Church. Contact 01925 601664.  
cath@stones.co.uk



**LYMM  
PARISH  
COUNCIL**

Next meeting December 12  
Lymm Parish Hall 7.30pm

# Family law firm listed in prestigious rankings

BPS Family Law LLP has been listed in The Legal 500's prestigious 2017 rankings – the client's guide to the best law firms in the UK.

Partner Caroline Swain has been listed as a "recommended lawyer."

The Legal 500 is the largest and most in-depth survey of the UK legal market, assessing the strengths of law firms in more than 100 jurisdictions annually.

Research is based on feedback from clients worldwide, submissions from law firms and interviews with leading private practice lawyers. Rankings are based on a series of criteria, highlighting the practice area teams who are providing the most cutting edge and innovative advice.

With their focus being on the bench strength of the team, and the consistency of quality of the individuals within the team, the Legal 500 divides law firms into different tiers depending on their size, achievements and growth.

Providing factual information about each firm, their type of work they do, and which firms are generally reckoned by their clients and peers to have a "good name", the information is based largely on the combined opinions of the many corporate counsel and law firm clients who co-operated in the research in each practice area.

The verdict on BPS Family Law LLP is that it has its clients' interests at heart, but also remains very professional and level-headed. It covers the pros and cons of each situation in detail and the client always has a clear understanding of each issue and the next course of action.

The "very dedicated and hardworking" Caroline Swain is praised for her "professionalism, compassion, common sense and calming influence"

BPS Family Law LLP advises on the full spectrum of family law issues.

## The team on hand to help with your health

WHEN it comes to dealing with pain, discomfort and even mental health – many hands make light work.

At Lymm Osteopathic Practice they have a whole team of highly qualified, experienced therapists who all work together to bring relief for a whole variety of conditions. They really do offer head to toe healthcare.

Although Osteopathy is an important part of the treatments they offer their patients, they have realised that optimum health is often achieved when two, or even more disciplines are used together.

This is why you'll also find Chiropody and Podiatry – from an expert team who have a wealth of experience in every aspect of footcare from corns and calluses to diabetic assessments.

Using a holistic approach, they are constantly aware of the importance of the legs and feet in someone's overall health – and recognise that not only can conditions of the foot and lower leg cause extreme pain, they can also be responsible for affecting a whole number of other issues in the rest of the body. In the case of bio-mechanical problems, orthotics can be made to create optimum support for arches and feet and restore balance to the body.

Another treatment that has been found beneficial when used alongside Osteopathy is Acupuncture. Their practitioner treats a wide range of conditions with special interests in sports injuries, fertility and gynaecological problems as well as cosmetic facial acupuncture.

And of course, at Lymm, they regard both physical and mental health as vital in achieving well-being. Their Counselling service offers help for people dealing with issues such as bereavement, loss and stress.

To find out the full range of therapies at Lymm Osteopathic Practice, or for an appointment, an assessment or just more information, you can call on 01925 752264 or take a look at the website on [www.lymmosteopathicpractice.co.uk](http://www.lymmosteopathicpractice.co.uk).

All practitioners have completed a high standard of professional training and are appropriately registered. They are always happy to help find the health solution that's perfect for you.

**simplesolutions**  
Financial Management Ltd  
INVESTMENTS & PENSIONS



### INVESTMENTS

Our investment expertise will ensure that you have the most suitable investment to help you achieve your financial goals.

We use:

• Asset Allocation • Risk Profiling • Diversification • Correlation

### PENSIONS

Pensions have changed since the March 2014 budget and you now have a lot more options to consider

### TECHNOLOGY

Simple Solutions uses the latest technology to keep you updated, even when you are on the move or abroad, check out our website for more details.



The Base, Dallam Lane,  
Warrington, Cheshire  
WA2 7NG

Tel: 01925 266628 Fax: 01925 267043

[www.simplesolutions.financial](http://www.simplesolutions.financial) @SimpSolSIFA

Simple Solutions Financial Management Ltd is authorised & regulated by the FCA. The registered office is 1st Floor, 67 London Road Stockton Heath, Warrington WA4 6SG. Registered in England & Wales. The company Re No 6920858.

## Meet your MP Faisal Rashid

Faisal holds regular surgeries to discuss any issues that you may need help with. **Private surgeries** take place every Friday. Simply call **01925 657600** to book an appointment, you can also send him an email at [faisal.rashid.mp@parliament.uk](mailto:faisal.rashid.mp@parliament.uk)

**Open surgeries** are on the first Saturday of each month, no appointment necessary – just drop in at 1 Wilson Patten Street, WA1 1PG between 10:00-12:00.

Stay up to date with all current news, policies, and events at [www.faisalrashid.com](http://www.faisalrashid.com), [facebook.com/faisalrashidmp](https://www.facebook.com/faisalrashidmp) and [twitter @faisalrashid6](https://twitter.com/faisalrashid6) and keep an eye out for local street surgeries coming soon to a doorstep near you!



"Working hard for all communities in

**Warrington South"**

Appleton | Bewsey & Whitecross | Chapelford & Old Hall | Grappenhall | Great Sankey North & Whittle Hall | Great Sankey South | Latchford East | Latchford West | Lymm North & Thelwall | Lymm South | Penketh & Cuddley | Stockton Heath

Produced by Faisal Rashid MP, House of Commons, London SW1A 0AA

[www.faisalrashid.com](http://www.faisalrashid.com)

# LEADERS IN FAMILY LAW.

Delivering the results when it matters

**Specialising in:**

Divorce & Separation

Financial Settlements

Child Related Matters



**Stockton Heath** 01925 912 277

**Hale** 0161 926 1430

**Manchester** 0161 834 2623

[caroline.swain@bpsfamilylaw.co.uk](mailto:caroline.swain@bpsfamilylaw.co.uk)

[www.bpsFamilyLaw.co.uk](http://www.bpsFamilyLaw.co.uk)





## Less is More!

- Get paid quicker – Improving your cash flow
- Less time spent sorting old receipts – Free up countless hours each week.
- Less jargon and more proactive advice – Watch your business flourish.

*Don't let these issues hold your business back.*

To find out how we can remove your financial headaches call us:

**01925 761600**

or visit us at:

**www.stylesandco.co.uk**

**styles** and co.  
chartered accountants

xero

SILVER PARTNER

# Barbershop ladies take silver!

A LADIES' barbershop chorus formed 24-years ago in Lymm took the silver medal in the national barbershop singing competition at Bournemouth.

The Cheshire Chord Company had only 12 members when it was formed in a back room at the Jolly Thresher pub in 1993.

Now it has 70 members – the youngest aged only 12 and it took second place in the competition organised by the Ladies Association of British Barbershop Singers.

The competition was held alongside the European Barbershop Convention – and the Cheshire Chord Company came fourth in that!

Before that there was a quartet competition and the company had two groups in that – Shockwave and Halo – and they put on great performances in the semi finals.

Cheshire Chord Company are always there when awards are being handed out. They have taken gold, silver or bronze in every national competition they have entered.

More details can be found about them at [www.cheshirechord.co.uk](http://www.cheshirechord.co.uk)



## A Fresh Approach to Education



**Sandymoor School**  
is an 11-18 school,  
producing intelligent,  
employable global  
citizens.

**Our curriculum is organized  
in five areas:**

- Personalised Learning
- Student Ownership
- Educational excellence for all
- Community Engagement
- Enhanced Pastoral Support

**Sandymoor School Christmas Fair, Tuesday 12th December 6pm - 8.30pm**  
Come and find those last minute Christmas Gifts from one of our many craft stalls

**We look forward to welcoming you!**



**Sandymoor**

For further information please contact the school office

Sandymoor School, Wharford Lane, Sandymoor, Runcorn, WA7 1QU

[info@sandymoorschool.org.uk](mailto:info@sandymoorschool.org.uk) Tel: 01928 571 217

[www.sandymoorschool.org.uk](http://www.sandymoorschool.org.uk)

Stay in touch: [Facebook.com/SandymoorSchool](https://www.facebook.com/SandymoorSchool)





# Navigating troubled waters?

Slater Heelis has provided expert advice to families for over 240 years.

Our team of Resolution family specialists are here to support you with first-class legal advice to provide the direction you need during separation. The team has expertise in divorce, separation, civil partnerships, finances and children arrangements. When it's appropriate for you, we are also able to offer collaborative law and mediation services.

Our family team all live in the South Manchester and Cheshire area. Living within the same community provides us with unique insight into what affects your daily lives. You are just a ride away from one of our offices in Sale, Timperley or Manchester. We have additional meeting facilities in Warrington.



*"Having moved away for university, I always felt a natural desire to return to the area where I grew up. With its variety of local restaurants, shops and events, Lymm has a vibrant and strong community atmosphere which gives me everything I need on my doorstep."*

**Camilla Burton-Baddeley** | Family Solicitor

Get in touch with our family team

✉ [family@slaterheelis.co.uk](mailto:family@slaterheelis.co.uk)

☎ 0161 672 1247

💻 [www.slaterheelis.co.uk](http://www.slaterheelis.co.uk)

🐦 @SlaterHeelisLaw    📘 /slaterheelis

**slaterheelis** LLP  
SOLICITORS

 **resolution**  
first for family law



# 600 turn out for first neighbourhood plan event



LYMM residents turned out in force for the first public consultation event to support the village neighbourhood plan.

More than 600 people attended the event in the village hall – and more than 30 volunteers helped organise it.

Dr Natalie Palmer, chairman of the neighbourhood plan working group, said: "This proves community spirit is alive in Lymm."

Warrington Borough Council is, like many other authorities, planning new housing and infrastructure developments.

Lymm has been allocated a housing target of 600 new houses including 500 on green belt land, over the next 20 years.

The neighbourhood plan working group is creating a plan that ensures the borough considers the views of Lymm residents. The group acts as the voice of Lymm, and will work independently, supported by the parish council to help steer these developments, by finding out what people want for their village and then ultimately helping to make it become legal planning guidance.

To do this the plan must pass an independent inspection and be supported in a village referendum. It then becomes official council policy.

The group is run entirely by volunteers who are passionate to ensure the local community's wishes are heard when planning applications are considered.

Dr Palmer said: "There is a lot of work to be done over the next

two to three years in producing this neighbourhood plan, but it is an example of what a great community we live in that so many people want to be a part of shaping the future of the village. Without the support of the community there will be no neighbourhood plan and the future of the village will be determined by the developers.

"Hundreds of post-it notes containing resident's opinions on the five themes of housing, social needs, environment, transport and economy were collected at the public meeting. There are some very clear themes emerging on types of houses, on accessibility and on the need to preserve the green spaces in and around the village.

"There is concern over the increasing level of traffic on the roads and a call for safe walking routes to be developed. There were many who think there should be more opportunities for small businesses to grow in the parish, providing employment for local people."

The neighbourhood plan group is looking for volunteers who can help gather the views of all sections of the community from every corner of the parish. The group would also like to hear from local businesses who can inform the group on the pressures facing local employers.

Anyone who would like to help in any way should contact the group through the newly launched website [www.lymmplan.org](http://www.lymmplan.org)

## The "Rev Bev" – Lymm's first female Rector

LYMM's first female Rector conducted her first Remembrance Day service at St Mary's Church – and also joined councillors, other civic figures, Royal British Legion and other service representatives in the parade.

The Rev Beverley Jameson – perhaps better known as "The Rev Bev" – has only been in Lymm a matter of weeks but admits she has already been charmed by the place.

"The village is lovely, the people are so friendly and I have been made so welcome," she said.

The Rev Jameson served in a team ministry in Worcester before coming to Lymm.

But her journey into the Ministry was an unusual one and involved a massive career change.

She admits that at one time she did not believe in God.

But friends who were getting married asked her to be a bridesmaid and she accompanied them to church services for support.

As a result she came to believe – even though her friends never went back to church after the wedding!

The career change came later and involved giving up a well paid job as corporate director and deputy chief executive of a district council in Shropshire.

"I was about to be promoted and it came as quite a surprise to them when I said I was leaving to study theology," she said.

The "Rev Bev", who lives in Rectory Lane with her cat, Toby, now plans to meet as many people as possible, within the church and the wider community.

She hopes to work with all the local schools – and she is looking forward to the Christmas Tree Festival at St Mary's on the first weekend of December.

The Rev Jameson is pictured with Bishop of Chester, the Right Rev Peter Forster, at her induction service.



## Parish council co-opts new councillor



LYMM Parish Council co-opted Ann Johnstone as a new councillor following the resignation of Ed Gough during the summer. Ann said: "I am committed to working with local community associations, traders and residents and being on Lymm Parish Council will enable me to continue and expand my support for the local community. "I have lived in Lymm since 1979 and have stood in three previous Parish elections. In 2016 I came within 20 votes of being elected and I am now looking forward to representing the residents of Lymm South." Ann was on the Lymm High School PTA from 1984 to 1986. She is a Lymm Festival Trustee and organises the Lymm Foodfest event each year. She is a member of Lymm Jubilee WI and a member of the Lymm Environment and Heritage Group. Ann is also a Room Guide at Dunham Massey and takes an active part in various historical events throughout the season.



# Amazing support

It's hard to imagine someone you love ever needing care. We find lots of families simply aren't informed when that time comes around.

The teams at **Brookfield and Cheshire Grange** are always happy to provide friendly advice or help in understanding the different types of care available.

**Barchester Healthcare:** proud to have been providing care and reassurance for over 25 years.

Care, safety and happiness are at the heart of everything we do in our care homes



Whether you need urgent care or just some help and advice, our teams are here to support you. For more information visit: [www.barchester.com](http://www.barchester.com)

  
**BARCHESTER**  
*Celebrating 25 years*

## **Brookfield Care Home**

18 Brookfield Road, Lymm, WA13 0PZ  
Tel: 01925 546 265

## **Cheshire Grange Care Home**

Booths Hill Road, Lymm, WA13 0EG  
Tel: 01925 546 264

**Nursing • Residential • Dementia • Respite**



**BOOK  
Now**

**UNDER  
3s  
FREE**

**EventCity**  
MANCHESTER

**ALL RIDES  
& SHOWS  
INCLUDED**

**4 HRS  
OF  
FUN**

# WINTER WONDERLAND

Manchester

The UK's Largest Indoor Christmas Theme Park

Indoors at EventCity next to  
Intu Trafford Centre



**RAINBOW  
SANTA'S GROTTO  
& REAL REINDEER**  
(UP TO & INCLUDING 24TH DECEMBER 2017)  
**NEW RIDES FOR 2017/18**  
**ALL INDOORS**

**GREAT GAMES &  
FOOD STALLS**  
(PAYABLE SEPARATELY)  
**CHRISTMAS  
CIRCUS**  
**FREE CAR PARK**

**9th December - 1st January**

Session times: 11:00 am - 3:00pm & 4:30pm - 8:30pm

\*Check website for specific rides, times and prices

**[www.winterwonderlandmanchester.com](http://www.winterwonderlandmanchester.com)**

BOX OFFICE: 0843 208 1842

GROUP BOOKINGS: 0843 208 6003



# Community urged to "Pitch In!"

A fund-raising project has been launched to build a brand new 3G pitch and floodlighting at Lymm High School, to be used by students and the wider community.

The state-of-the-art pitch, which allows sport to be played in all weather conditions on an artificial surface that feels very much like real grass, would be a joint venture between Lymm High School and the Football Association, and Cheshire FA.

The school are looking to make an application to the Premier League/Football Association fund next year and intend to embark on an extensive fundraising campaign to raise the balance of funding.

They hope that local people will show their support for a community 3G football pitch by helping to raise at least £100,000 to help support the bid.

As well as seeking support from local councillors, businesses and other sporting organisations, the school will also be enlisting the help of the parents and young people of both the school and the borough.

Fundraising to improve the changing facilities at the comprehensive school also began last year.

The school now intend to combine the funds raised for the two projects, ensuring that the changing room refurbishment meets the FA's regulations for changing facilities – something that is necessary for a successful bid.

Gwyn Williams, Headteacher



at Lymm High school said: "This is a fabulous opportunity for the school – and one that may not come around again for many years. Having such a facility on site would benefit every single student, being used for PE lessons and a wide range of extra-curricular and community sporting activities. At the

same time, it will be a tremendous asset to the wider community, with the pitch being available to local clubs and groups in the evenings and at weekends'

"Sport is a key part of every child's education and development and together we can make a truly deep and lasting impact on the

school. We're all very excited to see so much enthusiasm for the project so far and look forward to seeing the plans become a reality. If anybody is able to help, we would really appreciate their support.'

For more information or to donate visit [www.lymmhigh.org.uk](http://www.lymmhigh.org.uk)

## LYMM HIGH SCHOOL PITCH IN!

**We're looking to make an application to the Premier League/FA for a 3G pitch at Lymm High School**

**WE ARE RAISING £100,00 TOWARDS THE PROJECT AND WE NEED YOUR SUPPORT!**

Pitch In! is a fundraising concept to raise funds in an exciting and innovative way, while at the same time bringing Lymm High School and the community together. You are invited to Pitch In, in any way that you can!

**HAVE YOU  
PITCHED  
IN? ==**



FOR MORE INFORMATION VISIT:  
[WWW.LYMMHIGH.ORG.UK/ABOUT-US/PITCH-IN/](http://WWW.LYMMHIGH.ORG.UK/ABOUT-US/PITCH-IN/)



## Les Misérables School Edition.

Performed entirely by students



A musical by ALAIN BOUBLIL and CLAUDE-MICHEL SCHONBERG  
Based on the novel by VICTOR HUGO

**28TH NOVEMBER  
29TH NOVEMBER  
30TH NOVEMBER  
1ST DECEMBER  
7.00PM MAIN HALL**

School Edition specially adapted and licensed by MUSIC THEATRE INTERNATIONAL  
and CAMERON MACKINTOSH (OVERSEAS) LTD



**TICKETS**

**Adults £8 | Concessions £5**



## Planning under way for 20th Lymm Festival

PLANNING is well under way for next year's Lymm Festival which will start on June 21 and run until July 1.

It will be the 20th festival and promises to be extra special. In the meantime, two Winter Warmers have been confirmed with more to follow.

On January 20, Chris Rawlins will perform "I Remember Things" at Lymm Golf Club. During this unmissable show, Chris will perform incredible feats of memory live on stage (and the audience may even learn a new skill too!).

Then on January 26, Merry Hell will perform their dynamic folk music, also at Lymm Golf Club.

For further details and ticket information, please go to the Lymm Festival website [www.lymmfestival.org.uk](http://www.lymmfestival.org.uk).



## Lymm mum launches Artisan Christmas Fair

A LYMM mother of three is launching an Artisan Market at the village hall on Sunday December 17 from 11am-3pm giving local businesses a chance to promote their goods.

Rebecca Birt, has lived in Lymm for 10 years and is married with three sons, Max 9, Jake 7 and Charlie 5.

When her youngest child started school last year Rebecca decided to launch her own business Gorgeous Abode, which mainly operates online.

Rebecca explained: "It's mainly an online business but I have exhibited at some retail shows this year, Harrogate Flower Show, Ideal Home Show - Manchester and Arley Hall Christmas Spectacular.

"Over the Christmas season, I was looking for other places to exhibit at such as Altrincham Market, Knutsford Market, Wilmslow Market etc. and it was at that point that I thought about Lymm.

"Instead of exhibiting in neighbouring towns, I thought why don't I create an event in Lymm? I knew of at least five businesses which were like me, operated from home but went outside of the village to make sales.

"After the successes of Altrincham Market, I thought about creating an Artisan Fair in Lymm, which gave Lymm



based businesses a chance to exhibit their products / talents / creativeness in their home village.

"The great thing that we have seen with the established markets in neighbouring towns, is that the increase in footfall has benefitted all businesses within those towns. If we could create a fantastic event at the Village Hall, we hope that it will generate more footfall

within the village.

Rebecca added: "The support from the village has been fantastic, really encouraging and positive. The stand quality will be high, we all want to create a fantastic event. This event is a one-off but if it was successful, we could look at doing more events."

## Artists join in town twinning celebrations

LYMM Artists are to send a number of their works to twin town Meung-sur-Loire in May as part of the ongoing celebrations to mark the 50th anniversary of town-twinning between the two communities.

The exhibition will be staged during the bi-annual visit to France by members of Lymm Town Twinning Society.

There will also be a number of other activities, including a welcome event, excursions and a farewell dinner and dance.

Anyone who would like to join the society can do and will be linked to a French family who will act as their hosts during the four day visit.

Anyone who would like to take part in the event, or possibly future events, should call Patsy Gaster on 01925 751595 or visit the website [www.lymmtwintownsociety.co.uk](http://www.lymmtwintownsociety.co.uk).

In between the exchange visits, the Lymm society hold social events to raise funds to help host French families.

Many of the original members of the Society are now in their eighties - but they cater for all ages.

## Village gets new post office

A NEW post office is opening in Lymm - just two doors from the one which closed in November last year.

The new branch will be in the former Laura's Choice shop, in The Cross, which has changed ownership.

It will be open from 8.45am to 5pm Monday to Friday and 9am to 4pm on Saturdays - offering more than 48 hours of Post Office service every week.

Lesley McNally, Post Office area manager said: "We are making it easier for customers to get their cash, send and collect their mail and do their banking because we know how important these services are to local residents.

"We are confident that this vibrant new-style Post Office at the heart of the local community will meet customer needs."

### Christmas at The Lymm Hotel

*Sunday Lunch with Santa*  
Sunday 3rd and 10th December  
£24.95 adult | £14.95 child

*Christmas Day Lunch*  
Monday 25th December (limited availability)  
£75.00 adult | £39.50 child

*New Years Eve Dinner Dance*  
Sunday 31st December  
£49.50 adult | £29.50 child

**Quote 'LYML' when booking**

To book on 0344 879 9047 or email  
[general.lymm@macdonald-hotels.co.uk](mailto:general.lymm@macdonald-hotels.co.uk)

Lymm Hotel, Whitbarrow Road, WA13 9AQ  
[www.macdonald-hotels.co.uk/lymm](http://www.macdonald-hotels.co.uk/lymm)

**Family run scrap metal merchant based in Lymm, covering all surrounding areas.**

Free collection // Trade & Contractors // Household // Computer scrap

[www.lymmmetalsltd.co.uk](http://www.lymmmetalsltd.co.uk)

Tel: 07582871158 // 07831107525  
Email: [lymmmetalsltd@hotmail.com](mailto:lymmmetalsltd@hotmail.com)      Waste License: CBDU175109



# All set for Lymm Dickensian Day



LAUNCHED more than thirty years ago Lymm Dickensian Christmas Festival will take place on Saturday, December 9.

Started in 1985, the festival continues to grow, attracting new stalls and entertainment each year.

The Village centre will be closed to traffic from 8am to allow the various stalls to set up, and the day will commence at 11am.

In addition to the stalls there will be entertainment throughout the day provided by the local schools, choirs, dramatic groups, and street entertainers.

The Grand procession will leave Statham Avenue by the Lymm Hotel at 1.30pm.

Lymm Dickensian Christmas Festival will finish with the flotilla along the Bridgewater Canal (Weather permitting) around

4.45pm.

Please come along and support the many local charities, schools, and businesses that help to make Lymm Dickensian Christmas Festival a day for all the family.

## WILLIAM H. LILL + Co.

Your local solicitor  
specialising in:-

Conveyancing  
Wills & Probate  
Accident & Personal Injuries  
Divorce & Family Law

A friendly service for  
all your legal needs

Telephone: 753170 / 755668  
9 The Cross, Lymm WA13 0NY



**Saturday 9th December 2017**

**Commencing at 11am**



Stalls, Entertainers, Choirs, food and drink, flotilla, and  
much more....

Something for all the family !

www.lymmdickensian.org.uk



## Looking to invest in property?

### Lets Invest...

- Residential & Commercial Property Management
- Property Sales
- Property Investment Assistance for Buy To Let

**Call now on 01925 599111**

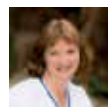
14a Warburton House, Eagle Brow, Lymm  
www.bridgewaterel.co.uk



**Bridgewater**  
Estates & Lettings

## Lymm Osteopathic Practice

— Established 1979 —



**SUZETTE PULMAN, N.D. M.R.N. D.O.**  
Registered Naturopath & Osteopath

**DARREN HAYWARD, B.Sc. (Ost)**  
Registered Osteopath



We are both registered with The General Osteopathic Council (G.O.Sc.)

Open Monday to Saturday

**Tel: 01925 752264**

The Rise, 16 Grammar School Road, Lymm WA13 0BQ  
(Easy Access Road Parking)

Registered with all major insurance companies



# Father Christmas prepares to team up with Rotary for big fundraiser

FATHER Christmas will arrive in Lymm on Sunday December 3 at Abbey Leys to start his tour of the area on the Rotary Club Float.

He will visit various areas in the build up to Christmas helping Lymm Rotary Club with their biggest fundraising event of the year, helping raise thousands of pounds for local good causes.

During a visit to the village recently he bumped into local youngsters Ava and Lincoln Jones who are both pupils at Ravenbank Primary School.

For the full list of Santa's tour of duty see right.



## Float routes 2017

**Sun 3rd Dec:** Abbey Leys, 9 to 10.30: 10.30 to 12.

**Mon 4th Dec:** Thelwall (1) - Assemble: All Saints Drive (Nr A56) - Woodlands Dr. (towards lymm), Gateley Close, To end of Woodlands Drive and side roads, Return to All Saints Drive, across to Woodlands Drive towards Warrington, across to Wilson Close, Stanton Rd, Pickering Cre, back along Woodlands Drive and continue Stanton Road, Moore Av, All Saints Dr, Parry Dr, Selworthy Dr, Beech Av, Barley Rd, Dunmow Rd, Pelham Rd, Welwyn Clo, Harlow Clo, Walden Clo.

**Tues 5th Dec:** Thelwall (2) - Assemble Quays Community Centre, 233 Thelwall New Road: WA4 2XT. Offerton Clo, Bradshaw La, Mottram Clo, Richmond Av, Ashley Clo, Prestbury Dr, Handforth Cl, Alderley Rd, Wilmslow Cres, Mobberley Clo.

**Wed 6th Dec:** Booths Hill (1) - Assemble: Dingle Bank Close, Lakeside Rd, Baycliffe, Elmtree Rd, Oaklands Dr, Parkwood Clo, Wayside Clo, Elm Tree Av, Cherry Lane (upper), Lady Acre Clo, Huntsfield Dr, Booths Ln, Highfield Rd, Highfield Dr, Hilltop Rd, Highfield Rd (top to Hardy Road).

**Thurs 7th Dec:** Booths Hill (2) - Assemble: CO-OP store Cherry Lane - Cherry La (lower), Cherry Tree Av, Old Smithy La, Wychwood Av, Heyes Dr, Egerton Rd, Lyme Gro, Hardy Rd, Highfield Rd (lower), Massey Brook La, Beech Gro, Massey Av.

**Fri 8th Dec:** Booths Hill (3) - Assemble: Camsley Bridge Car Wash, Booths Hill Rd, Princess Rd, John Rd, David Rd, Thornley Rd, Barsbank La, Barsbank Clo, Daisy Bank Rd, Oak Rd, Moston St, Ridgeway Gdns, Grove Av, The Anchorage, Eagle Brow, Brookfield Rd.

**Sat 9th Dec:** Sainsbury's 9am to 12pm - Dickensian Day (1pm assemble for 1.30pm start at Lymm Hotel - finish 2.45pm)

**Sun 10th Dec:** Sainsbury's Warrington: 10 to 11.30: 11.30 to 1: 1 to 2.30: 2.30 to 4.

**Mon 11th Dec:** Oughtrington Lane / Sandy Lane - Assemble: Stage Lane (near Church Hall), Stage La, The Paddocks, Crown Grn, Whitebroom, Sandy Lane, Bridge Meadow, Hopefield Rd, Ashcroft Rd, Woodbine Rd, Birchfield Rd, Cedarfield Rd, Sandy La, Rushgreen Rd (from Sandy Lane to Howard Avenue)

**Tues 12th Dec:** Rushgreen (1) - Assemble: Rushes Meadow (opposite Heatley CO-OP Store) Rushes Meadow, Chaise Meadow, Springfield Ave, Springfield Gds, Rushgreen Rd (up to Sandy Lane), Green Vw, Adey Rd

**Wed 13th Dec:** Rushgreen (2) - Assemble: Howard Avenue (near Rushgreen Road)

Howard Av, Heatley Clo, Lodge Cl, Richmond Dr, (Sandy Lane already done), Oughtrington Vw, Church Vw, Bucklow Gardens, The Greenacres, Rush Gardens,

**Thurs 14th Dec:** Rushgreen (3) - Assemble: Mardale Cres (alongside Rushgreen Road)

Mardale Cres, Grasmere Rd, Rushgreen Rd, Reddish Cres, Linden Clo, Reddish La, Bollin Dr, Bollin Cl, St Peter's Cl. Warburton Cl, Whitefield Gro, Whitefield Clo,

**Fri 15th Dec:** Statham 1 - Assemble: Statham Avenue (outside Lymm Hotel), Statham Av, Statham Clo, Statham Dr, Lymington Av, Star La, Pool La, Brookside Av, Oldfield Road.

**Sat 16th Dec:** Lymm Cross 9 to 10.30: 10.30 to 12: 12 to 1.30: 1.30 to 3.

**Sun 17th Dec:** Sainsbury's

Warrington 10 to 11.30: 11.30 to 1: 1 to 2.30: 2.30 to 4:

**Mon 18th Dec:** Statham 2 - Assemble: Albany Road (near Star Inn) - Albany Rd, Albany Gro, Albany Cres, Sycamore, Northway, Whitesands Rd, West Heath Gro, Jubilee Gro, Turnbury Cl, Whitbarrow Rd.

**Tues 19th Dec:** Higher Lane (1) - Assemble: Crouchley Lane (outside Wright House) - Crouchley La, Manor Rd (top), 49 Crouchley Lane, Manor Road (bottom), Higher La, The Crescent, Mayfield Vw, Greenwood Rd, The Hatchings, Higher La, Grammar School Rd. to Scholars Green, Scholars Grn, Limefield Av.

**Wed 20th Dec:** Higher Lane (2) - Assemble: Woodlands Av (near A56) - Woodlands Ave, Woodlands Dr, Longbutt La, The Seasons, Oughtrington La, Foxley Cl, Higher La, Bellfield Clo.

**Thurs 21st Dec:** Keate House 5.45pm and then Village - Assemble: Davies Way Car Park (near Library), Danebank Rd, Lymm Hay Lane, Brooklyn Dr, Dane Bank Rd, Millbank, The Cross, Pepper St, Grove Rise, Rose Bank, Hartley Cl, Crossfield Av, Racefield Cl, Cyril Bell Cl, Orchard Av, Fairfield Rd, The Peppers, Rectory La, Rectory Gds.

**Fri 22nd Dec:** Sainsbury's Warrington 9 to 10.30: 10.30 to 12: 12 to 1.30: 1.30 to 3: 3 to 4:



## Halloween dancers raise £1,820 for leukaemia charity

AROUND 180 people danced the night away in Halloween costume - and raised £1,820 for leukaemia charity Bloodwise.

The event was organised by Lymm leukaemia campaigner Joanne Brown who, over the last 15 years has raised about £30,000 for the cause.

The event was at Grappenhall and Thelwall Royal British Legion club and was attended by people from all over the Lymm, Thelwall and Grappenhall areas in fancy dress. Seventies and Eighties disco music kept them dancing all night.

Afterwards, mother-of-four Joanne said: "I would like to thank everyone who attended and all

the local firms who supported the event. We could not do anything without them."

Joanne started her campaigning back in 2002 after being diagnosed with leukaemia and becoming the first person in the North West to be treated with a then new "wonder drug" her husband, Tony, learned about on the internet.

As a result, little more than 12 months after being diagnosed, the disease was in remission.

She said: "I was, in effect, a guinea pig - and it worked."

Ever since, she has organised fundraising events for Bloodwise as a way of saying "thank you" for the treatment she received.





# Award for charity organiser



Jean (centre) with Lady Cavendish (right) and NW regional organiser for Contact the Elderly Gwen Lightfoot (left)

PAM Redford, Lymm organiser of national charity Contact the Elderly, has been presented with the charity's "North of England" award.

She was presented with the award at a ceremony in Leeds, by Lady Jasmine Cavendish, president of Contact the Elderly, for her efforts in keeping the Lymm and Thelwall group operational after the sad death, last year, of previous organiser Colin Melrose.

Contact the Elderly is an organisation which regularly entertains persons over the age of 75 to afternoon tea. Locally, they also organise an annual fundraising concert by the Chicago Teddy Bears Society Jazz Band at Grappenhall Community Centre.

Jean Higgins, a regular guest of the Lymm group, received the awards, donated by the Marsh Christian Trust, on behalf of Pam.

**Come along to our  
Warrington & Lymm**

# CHRISTMAS FAIR

Come along to one of our Christmas fairs and open days where you can view our facilities, meet our dedicated team.

There will be various activities including Santa's Grotto, Biscuit Decorating, Make your own Reindeer Food, Trader/Gift Stalls, Refreshments & more! **Everyone Welcome**

**Kids Planet Warrington**  
Sat 2nd Dec 10am-2pm  
Ebenezer Chapel, Legh Street,  
Warrington, WA1 1UL  
01925 417 350

**Kids Planet Lymm**  
Sat 9th Dec 11am-2pm  
29 Eagle Brow, Lymm  
WA13 0NA  
01925 759 220

## 2 FOR £99 SPA DAY\*

INSPIRED  
BY YOU

Treat yourself and a friend to a winter spa day at The Park Royal Spa, Cheshire for only £99. Unwind in the tranquil surroundings of their four-star spa, the perfect sanctuary for pampering.

- 1 x 60 minute spa treatment per person†
- Use of health club facilities including state-of-the-art gym equipment, indoor swimming pool, sauna and steam room
- A delicious light lunch
- Complimentary car parking
- Open late Tuesday - Thursday

Treat yourself and a friend this winter, book your spa day today; call and quote Lymm Life

01925 730 073 | parkroyalbeauty@QHotels.co.uk  
Stretton Road, Stretton, Warrington WA4 4NS  
QHotels.co.uk

**THE  
PARK ROYAL**  
Warrington,  
Cheshire

Terms and conditions apply and offer subject to availability. \*Offer valid Monday-Friday until 23rd December 2017. †60 minute treatment includes 50 minute treatment time and 10 minutes client care. Spa treatment must be taken on the same day. For full terms and conditions, speak to a member of our friendly spa teams.



# Action group seek amicable solution to Warburton Toll Bridge traffic chaos

AN action group has been formed in a bid to find an "amicable solution" to the ongoing traffic chaos being caused by the Warburton Toll Bridge.

In the space of the first week the Warburton Toll Bridge Action Group gathered more than 700 members on a facebook group which now boasts around double that number.

The action group says Warburton Toll Booth has become a blight on the local community as far as traffic and disruption is concerned. The group has been established to give all those affected a voice and to work as a community to come to an amicable solution with the owners – Peel Ports.

Earlier this year Peel announced a 'programme of works' ahead of a refurbishment of the crossing, which costs 12p to cross, or 25p for a day ticket.

The group has been established by Rixton resident Mark Broadstock to provide residents 'with a strong voice' to challenge Peel.

Mark said: "The group was launched to assist local residents in having a voice when it comes to the nightmare that is Warburton Toll Bridge."

"After having a discussion with a local councillor who said that the council had done all it could

but Peel Holdings were a difficult business to deal with, I thought 'no that just is not good enough' – surely the local people have a voice and have the right to be heard."

Mark added: "Warburton Toll Bridge can take a lot of time out of a persons day especially if you have to cross it on a regular basis like I do to take my son to school. Last week alone in one day I spent over three hours in queuing traffic."

"Imagine how much productive time this is taking out of the local purse from a business and social perspective. Only a few days ago a member of the group posted that

she had missed urgent doctors appointments for her child due to how bad the traffic was."

"The aim now for the group is to firstly build in size and then begin lobbying for improvements on behalf of its members. Communication is key although to date many members are highlighting their frustration that the elected representatives have not been helpful in the slightest."

"The residents in strength have to hold those elected to account," added Mark.

Mark is now planning to organise a members evening to

discuss the next steps.

To join the group visit <https://www.facebook.com/groups/1854203578242943/>

\*The original toll bridge was built over the River Mersey in 1866 to replace the Warburton to Hollins Green ferry. The old river bed is now farm land and all that remains of the river is a pond. The original bridge has been buried, and the existing toll booth is for the cantilever bridge built over the Manchester Ship Canal.



## Pre-school settles in new home

CHILDREN at St Mary's Pre-school, Lymm are settling in at their new home at Cherry Tree Primary School

Thanks to fundraising as part of a community project started at the beginning of the year, they are now in a mobile classroom at the primary school in Hardy Road.

The youngsters, aged 2-4, now have a new indoor classroom and outdoor playground, including a mud-kitchen, pirate ship and reading area.

It was the first pre-school had moved home in its 40 year history.

Helen Graham, head teacher at Cherry Tree Primary, said: "We are delighted to welcome the pre-school."

"It's been an ambition of ours for some time, and we are very pleased that it has come to fruition. As a registered charity, with many of their pre-school children already moving on to Cherry Tree, partnering with St Mary's as a community outreach project was the right way forward. While our mobile classroom was a great starting point we couldn't have done it without the support and hard work of our governors, many local suppliers and the local and school community, including parents, who have donated time and resources to help us create the best possible facilities. I would like to thank them all whole heartedly for their support and hard work."

"Having a pre-school on site means we can work even more closely together to prepare children for primary school, giving them the best start possible as they enter school life. In such challenging financial times, we are very lucky to have such a supportive community and group of parents, which make projects like this possible."

Pre-school leader Rosie Knowles said: "This is a very positive move for us. We have extended our opening hours to fit in with school hours, which helps working parents. We look forward to working alongside Cherry Tree to give our young children a great start on their educational journey."



## School roof repairs approved



PROPOSALS to repair and recover parts of the roof of the Grade 2 listed Lymm High School building have been given the go-ahead by Warrington planners.

The work will involve pitched slated roofs, flat felted roofs and replacement and repairs to roof lights and rainwater goods.

Originally Oughtrington Hall, and believed to date from around 1830, the building will undergo work that is more than a simple refurbishment of the existing fabric, as it is proposed to provide insulation to the room which will raise its height.

However, the difference in height will be indiscernible when viewed from ground level, the borough's development management committee was told.

The work would allow for the continued use of the building and its viability in the future.

Planners also granted Listed Building consent for the work to be carried out.



# Lymm May Queen set to take place in May!

LYMM village's historic Lymm May Queen festival is set to take place in May – with the hope of better weather!

Historically the event has always taken place on the second Saturday in June but in recent years it has not been blessed with the best of weather, with this year's cancelled on the day due to the state of the May Queen Field following torrential rain.

The previous year the parade was a wash out due to a torrential down pour.

Local councillor Kath Buckley has taken over as Lymm May Queen Chair.

Kath said: "Lymm May Queen in its present form started after World War II in 1948 and has been carrying on in one shape or another since then. The coming May Queen in 2018 aims to go back to its roots as a fun family event which everyone can enjoy. It is taking place in May, so that we can ensure that our key audience school children and their families will be there to take part, plus we



hope for better weather!!!"

The event will start as usual with a procession of floats and attractions through the village. The theme for the 2018 procession will be 'Celebration'.

It is hoped there will be a lot of support for the procession. Any one wanting to take part in the procession contact Paul Middlehurst on paul@middlehurst.org.uk

It ends with the procession led by the May Queen, Rose Queen and retinue entering and being crowned on the May Queen field itself.

Kath added: "We intend to be moving away from the big fair rides and instead will be concentrating on the event being for all the family. Once you pay your entrance ticket there will be a lot of free /minimal cost events for all the family such as bouncy castles, face painting and loads of stalls to browse and buy from."

Anyone who wants to be on the field with a stall/event contact Di Kerfoot on Dianekerfoot@gmail.com

The 'picking' of the May Queen will take place on March 3rd at

the Village Hall 12.00 – 2.00pm. Letters will be going out in the new year – organiser is Farah Jones.

The focus will be, as always, on the May Queen and Rose Queen but once the crowning has taken place it is hoped people will stay to enjoy the dance competitions and other fun experiences.

Kath added: "We hope people will support this event, which with the Duck Race, kicks off the festival season for Lymm. We always need volunteers on the day to help with the procession, on the field and as Marshalls." Anyone interested in these roles contact kjbuckley@hotmail.co.uk

Watch out for the Face book and website for further details. For more information on these contact jenniferlouisegrimes@gmail.com .

The May Queen programme aims to be out by at the latest the beginning of April.

Anyone interested in sponsoring an advertisement in the programme, please contact Glynis Sharp/Sharon Roberts on lmprogramme@gmail.com

## £6,000 bonfire boost for local charities



CHARITIES AND community groups will be getting a much-needed boost this Christmas as a result of Lymm and district Round Table's annual bonfire.

An impressive £6,000 was raised by the successful event at Lymm Rugby Club.

The popular event – once again

sponsored by Kids Planet Nursery and held at Lymm Rugby Club – featured two fireworks displays, a range of food, refreshments and fairground rides. Lymm Ladies Circle also raised over £850 for charity by serving up warming beverages and treacle toffee.

Bonfire organiser Ed Gough said: "Despite the rain we had a fantastic turnout and we are eternally grateful to everyone who came along to support the event."

"We have a great group of hard-working lads who have volunteered their free time to help out. Their

commitment to the cause means a lot of charities and community groups will be getting a much-needed boost this Christmas."

Anyone who would like to nominate a charity to be considered for a donation should email charity@lymmroundtable.co.uk

## Getting together to "make a difference"

SCOUTS, community workers and bankers got together to "make a difference" in Lymm village.

Employees from Barclays' technology centre at Radbroke Hall, near Knutsford joined forces with Lymm in Bloom and the 3rd Lymm Scouts to work on projects around Lymm as part of their annual "Make a difference" (MAD) day.

Old and rusting fences at St Peters Church, Oughtrington were dug out and replaced to smarten up the area near the war memorial.

Peter Powell, of Lymm in Bloom, said 'This is the second year Barclays have helped out on Lymm in Bloom projects, and the work couldn't have been done so quickly

without their assistance this year."

Other members worked at Maple Lodge Scout and Guide Centre on Pepper Street, creating new equipment stores, painting walls, hanging curtains and notice boards, trimming hedges and general gardening work.

Barclays also made a grant towards materials and tools to get the jobs done. In total, 16 staff got involved across the two projects.

Group Scout leader James Hurrell said "Most of the team who participated come back regularly, and every year the event gets more and more staff involved as word travels."

"They love getting out of the

office, learning new skills and practicing old ones, and putting something back into the community. As well working at Maple Lodge we also like to get involved in

other local projects such as Lymm in Bloom. If anyone has any other projects they would like us to get involved in next year, we would love to hear from you."





# Former Lymm student embarks on new career path thanks to apprenticeship

FORMER College student Beth Wood says starting an apprenticeship with Warrington's largest adult social care provider Catalyst Choices was one of the best decisions of her life.

Beth, aged 19 from Lymm, is now nearing the end of her 12-month Social Media and Digital Marketing apprenticeship with the Warrington based Community Interest Company.

"My dream was to be a digital journalist, I planned to go to college, after A levels then start a Media degree at Lancaster University. I left high school with great GCSE's, ready to start off my first college year at Priestley College with much determination and ambition," said Beth.

"At this stage, I had not considered any other options as this was the advised best route and I followed my heart as all my other friends were going down the same route, so, why wouldn't I?"

"At first, I was loving my first month or two as an A level student it was a different environment and the transition from calling your teachers 'Sir' and 'Miss' for five years, to then be granted with first name terms seemed so cool! Everything seemed great, the shorter days, the freedom of free timetable slots all seemed very grown up, however as time went on, things changed..."

"The work load seemed to have gotten progressively larger, I achieved good results in my chosen topics in the first year however the second year was noticeably harder and I had to consider if this really was the right path for me? I learnt a valuable lesson from this experience to keep an open mind regarding my education and that there are different routes to the career you want!

"Motivated by the same determination and ambition, I was going to do everything I could to ensure success. I found a website for an apprentice training program ran by 'The Juice Academy' in Castlefield. The program enables students to achieve a great qualification through an apprenticeship in Social Media and Digital Marketing for business whilst gaining valuable real-life work experience – in fact this is the UK's first industry led provider!

"This route was perfect for me and I knew I had to apply even though this wasn't my original plan so I prepared well to give it my best shot. On the assessment day I had various tasks to demonstrate my creative side against other candidates going for the same job. Things such as creating a short promotional video, a mini presentation and in the end, an interview.

"My hard work paid off and I was successful with my chosen appointment! David Osborne, Managing Director of Catalyst Choices decided I was the right candidate to help boost the company's online presence and I was delighted to be appointed as the first ever Social Media Apprentice at Catalyst Choices."

Beth added: "Catalyst Choices are Warrington's largest adult social care provider. They offer an incredible range of social care services including respite, residential and day care across the Warrington Community, making better lives for older people and adults with learning disabilities.

"Catalyst Choices provided a full induction, I was shown around all the amazing sites meeting some truly inspirational clients, carers and staff. I knew I was extremely



lucky to be working for a company who do such great things to help others!"

Her role has included assisting in the development of the social media channels to build a lasting digital connection with clients, carers, families and professionals. She has also assisted with creative marketing content involving brand awareness to promote the business and services.

Beth added: "I feel like I have achieved a lot during my time at Catalyst Choices including plenty of new useful skills including new technologies to create surveys, advertisements for local media and content for digital platforms and build new relationships with media partners. The experience has been incredible, and I have found a new-found passion for what I do!

"I love my role at Catalyst and the experience has reinforced

my choice to pursue a career in marketing and social media. I am exploring a new talent and although it was not planned, it is the best decision I have ever made!

I am excited to see where the future will take me as I come to the end of my apprenticeship and start a new chapter I will leave you with one of my favourite quotes...

"Your work is going to fill a large part of your life, and the only way to be truly satisfied is to do what you believe is great work. And the only way to do great work is to love what you do. If you haven't found it yet, keep looking. Don't settle. As with all matters of the heart, you'll know when you find it." Steve Jobs – Founder Apple.

**Footnote: Beth has now been appointed as Marketing Executive at Catalyst Choices**

## First homes completed on Willowpool site

THE first five properties of a unique residential development on the site of the former Willowpool Garden Centre have been completed.

Willowpool is being developed by niche Cheshire-based Arbor Living, and claims to offer housing and lifestyle for the over 55s unlike anything else in the country.

High specification park homes set in landscaped grounds with an adjoining private meadow and pond area offer a lifestyle option for over 55s looking to downsize, reduce maintenance costs and release equity in their property.

Phase one of the development of the 4.5-acre site is now complete, with the remaining eight homes due to be finished next summer.

Graham Richardson, chief executive at Arbor Living, said: "Cheshire is a stunning county and a wonderful place to live. We have identified that like most of the country, Cheshire has a lack of single level living properties and as we are based in the area, it was the



right fit for our next development.

"Willowpool will be the country's first seven-star park home development and offers discerning buyers over 55 the chance to purchase a contemporary, single level home, without giving up the standard of lifestyle they currently enjoy. It's also an unrivalled option for those looking to downsize and release equity from their existing property.

"At Willowpool the concept is simple; luxury low-maintenance living in the heart of Cheshire, close to all local amenities."

One of the five properties have already been sold ahead of completion by Gascoigne Halman Lymm estate agents, who are marketing Willowpool.

Bobby Shahavi, manager of Gascoigne Halman Lymm, added: "We continue to see a substantial

demand for higher standards of living in retirement and semi-retirement and Graham and his team are tackling this shortfall in high-spec, single level homes.

"Lifestyle aspirations from this age group, which is the single largest demographic in our country, have changed as many customers don't want to compromise their standard of living, but want to travel and free up funds possibly to help children get on the housing ladder. I expect Willowpool will be very well received in the area."

The homes are built to BS3632; an exacting standard covering structural stability, weather-resistance and insulation, and include a choice of distinctive kitchens and bathrooms, plus contemporary design features such as Velux windows, roll-top baths, dining areas to comfortably seat eight and outdoor living spaces.



# WILLOWPOOL

LYMM | CHESHIRE



# AVAILABLE NOW

Contemporary new homes for over-55s, single-storey and set in a secure, gated, residential community.

#### STANDARD VIEWING TIMES

**Wed–Fri 12–4pm**

**Sat 10am–4pm**

Other viewing times are available by appointment through Gascoigne Halman.



#### FIND OUT MORE

Contact the team at Arbor Living

**Call** 01625 586 705

**Email** [info@arborliving.co.uk](mailto:info@arborliving.co.uk)



#### BOOK A VIEWING

Contact Gascoigne Halman in Lymm

**Call** 01925 758 345

**Email** [lymm@gascoignehalman.co.uk](mailto:lymm@gascoignehalman.co.uk)





# Hale

CARPETS & FLOORING



Find the perfect flooring for your home in our showroom plus expert design and installation advice. We have a huge range of quality carpets, Karndean Design Flooring, Ted Todd Hardwood, Harvey Maria and more. Free measuring and quotation service available.

Lymm Road, Thelwall, Warrington, WA4 2TG  
01925 756275 | halecarpets.com

f t i p h houzz

## EXCHANGE YOUR GOLD AND SILVER FOR INSTANT CASH



All items of jewellery accepted

**Did you know...?**  
We accept silver jewellery, cutlery, tea sets, spoons, cigarette cases, candlesticks, trophies, trays, medals, coins and pocket watches.

**ROLEX WATCHES WANTED! ANY CONDITION**

Open: Tuesday-Saturday: 10am - 5.30pm  
1 London Road, Stockton Heath  
(First floor entrance on Fairfield Road)  
**07544 486 621**

**CHESHIRE GOLD XCHANGE**  
GOLD & SILVER BULLION DEALER

# STOCKTON FRYER

111 London Road, Stockton Heath

**NOW DELIVERING TO LYMM**

**Gluten Free Menu Now Available**

**Fish & Chips, Chinese Meals, Burgers, Kebabs and more...**  
We deliver to WA4: Stockton Heath, Stretton, Latchford, Appleton Thorn, Grappenhall, Pewterspear, Walton  
*Minimum order of £10 (£1 delivery charge applies)  
Over 4 mile radius £2 delivery*

Phone orders for Chinese meals welcome **01925 264345**  
Open lunchtime and from 4.30pm.  
Late closing Thurs & Sat (11pm) and Fri (11.30 pm)

# WELCOME TO THE IDEAL BUILDING COMPANY




Our mission is to deliver a high standard of building work at competitive prices and give complete client satisfaction every time.

Our services include: Extensions & Conversions, Complete Refurbishments, Loft Conversions, Structural Works, Homes Offices, Kitchen & Bathroom fittings, Electrical, Heating and Plumbing works, Full Plan & Design Service and General Building work.

**For a FREE consultation please call**  
**01925 730888**

Urban Building Projects Ltd.  
410 Europa Boulevard, Gemini Business Park, Warrington, Cheshire, WA5 7TR  
Email: [info@urbanbuildingprojects.co.uk](mailto:info@urbanbuildingprojects.co.uk) Web: [www.urbanbuildingprojects.co.uk](http://www.urbanbuildingprojects.co.uk)

MA, ELEC SA, LABG

## Aspire Computers Home Support

Local Warrington Based IT Company for all your Support Requirements

**Fixed Price Home PC Support**  
**First PC Diagnostic Check FREE**

When you choose the annual home support option with us

**aspire** Computers Ltd  
01925 251143  
[sales@aspire-computers.com](mailto:sales@aspire-computers.com)  
[www.aspire-computers.com](http://www.aspire-computers.com)



# Thelwall Upholstery

**FOR THE MOST COMPETITIVE RATES IN THE AREA**  
49 Knutsford Road, Grappenhall WA4 2NR  
Call Sean on: 01925 604770 or mobile: 07799 228080  
[www.upholsterywarrington.co.uk](http://www.upholsterywarrington.co.uk)

*For all your upholstery needs*  
**SPECIALISTS IN:**  
• Re-filling Cushions • Re-springing • Full Re-upholster  
• Dining Furniture • Headboards

A wide range of sample books to choose from  
All at competitive rates  
**PHONE FOR YOUR FREE ESTIMATES**

FSB



## Chamberlain Aesthetics



www.chamberlainaesthetics.org  
appointments@thewhiterooms.uk.com

ANTI-WRINKLE INJECTIONS  
VAMPIRE FACELIFT • THREAD LIFTING  
DERMAL FILLERS • SKIN PEELS  
LIGHT THERAPY • LIP ENHANCEMENT  
SKIN REJUVENATION  
THREAD VEIN REMOVAL

f chamberlainaesthetics i chamberlain\_aesthetics

01925 752 333



## THE WHITE ROOMS

Physiotherapy and Wellness Centre

### OTHER TREATMENTS INCLUDE:

Headache, Migraine & Neurological specific treatments  
Swedish Massage, Aromatherapy, Pregnancy Massage, Reflexology  
Reiki, Sports Massage, Manual Lymphatic Massage, Chiropody

01925 752 333

www.thewhiterooms.org e: appointments@thewhiterooms.uk.com  
11-13 New Road, Lymm WA13 9DX

f /TheWhiteRoomsPhysiotherapyClinic Gift Vouchers are available

## SCAPE



Garden Sheds to Secure Workshops, Airy Summerhouses  
to Contemporary Offices and Versatile Storage Areas

Scape Garden Buildings design, make and install  
a range of craftsman-built timber buildings.

Concrete base and full landscape design service available

Visit our showroom today. Open 7 days 10am-4pm

01925 453 379

61 Knutsford Road, Warrington WA4 1AB

enq@scape57.co.uk | www.scape57.co.uk

## ChipsAway

Scratches and scuffs won't dent your pocket

Quality, professional mobile car paintwork repairs  
at a fraction of traditional body shop costs.

### ✓ Bumper scuffs



### ✓ Paintwork scratches



### ✓ Minor dents



Call or email Mark now to arrange your free estimate

☎ 07445029415 / 0800 0287878 ✉ mark.chorlton@chipsaway.co.uk



www.chipsaway.co.uk

REPAIRS FULLY  
GUARANTEED

To get your  
business  
on track and in the  
'Pink' contact  
James Bryan on  
01925 631592



# Couple say thank you for enjoyable trip down memory lane

ANDREW and Barbara Colyer enjoyed their trip down memory lane to Lymm and Grappenhall so much they had to write in to thank people for their hospitality and are now avid readers of our online publications. Their letter is printed below:

"Good morning. We have recently returned to Perth, Western Australia where we live after visiting and staying with family in the Bradford area where we are originally from.

"However, in researching our family tree we discovered that my grandad Edward Colyer went to school in Grappenhall in 1893/94 along with two of his brothers and his family also lived in Lymm.

"Indeed my grandad's father Henry Charles Colyer is buried in St Mary's Church in Lymm having died in 1903 in the area.

"In September we twice visited Lymm and Grappenhall and we were very impressed at how nice both places are.

difficult to locate. However, a few people in the church who were holding a meeting at the time were extremely helpful and even dug out a floorplan from the safe which helped us identify the area where our relative is buried. One of the gentlemen then came outside with us to show us the area where we should be looking. Without this help we would have not found it as the gravestone had fallen over and was partially hidden but because we had the map we were able to find it using the names of the people nearby as a guide.

## Wilderspool

"When we lived in England prior to moving to Australia we went to Wilderspool many times to watch Bradford Northern as they were then, but never knew of Lymm as we weren't aware of the family connection to the area.

"Unfortunately we arrived in England the week after the Lymm beer festival but Mike Lavelle was very kind in saving me some glasses from the event which are a nice souvenir.

"We went to St Mary's Church to locate the gravestone of Henry Charles Colyer but it was very

## Very enjoyable

"We cannot thank people enough for making our visit very enjoyable with a couple of nice lunch time meals as well, once in Lymm and once in Grappenhall.

"I have for the last 6 months or so been downloading the monthly Lymm Life and Village Life etc and really enjoy reading these. Having now been to the area I can now identify with the content. Keep up the good work."

Regards and best wishes  
Andrew and Barbara Colyer



Andrew Colyer



Established 1878  
**John Burrows & Sons**  
Fourth Generation Independent Family  
**Funeral Directors**  
Friendly & Professional Service  
Day or Night ~ J. Tandy  
The Old Smithy, Mill Lane, Lymm,  
WA13 9SE Tel: (01925) 752501  
Golden Charter  
Funeral Plans  
www.johnburrowsandsons.co.uk

## Obituary

### Margaret Seed

THE funeral has taken place at St Mary's Church, Lymm of Margaret Catherine Seed, nee Whitfield, aged 98, who died in Warrington Hospital on October 16.

Margaret was a lifelong resident of Lymm and lived in David Road. Funeral arrangements were by John Burrows and Sons of Lymm.

**twentyfour**  
● ● ● **seven**  
design & print ltd  
01925 240247  
WWW.247PRINT.NET



**Traditional Values**  
MODERN IDEAS





## CLASSIFIED

FREEPHONE 0800 955 5247 to advertise

## ACCOUNTANCY &amp; BOOKKEEPING

**BOOKKEEPER/ACCOUNTANT.** Licensed for maintaining financial records, VAT Returns, Payroll Service, Management Accounts, SAGE Software Consultancy. **Contact: 07815 617914.** (G\*/17)

## CARPETS, CURTAINS &amp; INTERIORS

**BLINDS, CURTAINS, CARPETS,** plantation shutters, paint, wallpaper. All popular brands available, including Harlequin, PT, Little Green Paint Co, F&B, Cormar and Victoria Carpets. **Xross Interiors, 27 The Cross, Lymm Tel 01925 758298 or email hello@xrossinteriors.co.uk** (N9/17)

**Paul Bains Flooring Solutions Ltd**



- CARPETS - WOOD - LAMINATES -
- DECORATIVE VINYL FLOORING -
- FREE CHOOSE AT HOME SERVICE -

101 Bucklow Gardens, Lymm WA13 9RN  
T: 01925 748549 M: 07973 376224  
E: paulbainsflooringsolutions@msn.com  
www.paulbainsflooringsolutions.co.uk (G\*/18)

## CARPET CLEANING

**A1 STAINBUSTERS.** A Warrington company cleaning Carpets, Upholstery (Leather + Fabric) and Curtains in situ. FREE quotes for domestic and commercial. **Call John on 01925 852088 or 07765314080** (G\*/18)

**SIMPLY THE BEST CARPET CLEAN YOU** will ever have. Cleaners UK Ltd. Est 28 yrs. Have your carpets & sofas beautifully deep cleaned leaving them fresh smelling & colour restored. Latest & best methods. Dry/steam. Leather cleaning, oriental rug specialist. Professional, reliable & affordable. **For more info call Neil Riley on 01925 264989 / 07831 336060 www.cleaners-uk.net** (G\*/18)

## CLEANING SERVICES

**arleys angels**

- Spring Clean Specialists
- Presenting your home for sale
- Moving house
- After building work cleans

**01925 266834**  
... because you're worth it! (G\*/17)

**SIMPLY THE BEST CARPET CLEAN YOU** will ever have. Cleaners UK Ltd. Est 28 yrs. Have your carpets & sofas beautifully deep cleaned leaving them fresh smelling & colour restored. Latest & best methods. Dry/steam. Leather cleaning, oriental rug specialist. Professional, reliable & affordable. **For more info call Neil Riley on 01925 264989 / 07831 336060 www.cleaners-uk.net** (G\*/18)

## ELECTRICAL CONTRACTOR

**TRUST PROPERTY ELECTRICAL SERVICES.** NICEIC Part P Approved Contractor. All Electrical work undertaken. Inspection & Testing & PAT Testing. All work certified & guaranteed. **Call Tim on 07754409906 or 01925 601055** (G3/18)

## EQUESTRIAN SUPPLIES &amp; ANIMAL FEEDS

**STABLES SADDLERY.** Est 1964. Good stock of all equestrian supplies and animal feeds. Also storage available for trailers, caravans and household goods etc. **Tel: Barbara Williams on Lymm 752762.** (G12/17)

## FARMING / FIELD SERVICES

**NEIL WORTH CONTRACTING FOR** hedge trimming & paddock/small field work. Also septic Tank emptying. Scrubland clearance. Specialist in Japanese knotweed spraying. **Tel: 07973 242808. www.nworthcontracting.co.uk** (N10/17)

## GARDENING SERVICES

**Beechwood Industries Ltd** **LOCALLY BASED**

- Garden Maintenance
- Lawn Care
- Landscape Design
- Construction
- Paving
- Tree Surgery
- Free Assessment
- Free Consultation

Contact us on:  
**07749 253 308**  
**01925 860544**  
www.beechwoodindustries.co.uk (G\*/17)

**J C SLAVIN**  
**Landscapes & Garden Maintenance**

Landscape Design • Garden Landscaping  
• Plant Hire • Flagging • Fencing • Tree Hedge Pruning  
**01925 756 839 / 0161 775 0297**  
**Mob: 07737 655 211**  
**www.jcslavin.co.uk** (G7/18)

## HANDYMAN

**Handyman Services**  
**Home, Office & Garden**

Internal and External Painting • UPVC Window and Door Repair and Replacement  
Mechanism/Lock Changes • Soffits and Fascias  
Gutter Cleaning, Repair and Replacement  
Flagging • Fencing • Patios • Jet Washing  
All Garden Work • All DIY  
Call today for a FREE quote  
**Tel Neil: 01925 757905 (Lymm Based)**  
**Mob: 07813 201850**  
**handymanserviceslymm@hotmail.co.uk** (G4/18)

## HOME SERVICES

**ATLAS**  
**Your friendly local independent**

**PEST CONTROL**

Affordable, professional, guaranteed service. Fully insured, fixed prices - no surprises once on site! Discrete vehicles, no embarrassing signs  
**07999 487 925 / 01925 445 222**  
**www.atlas4u.co.uk** (G6/18)

## MORTGAGES

**INDEPENDENT MORTGAGE ADVICE.** For local, impartial and professional advice on all aspects of mortgages contact Darren Simpson at Amathus Financial Services on **07708 975122 or 01925 399999** (G12/17)

**ROYLE**  
**MORTGAGE SOLUTIONS LTD**

Joanne Murray  
Mortgage and Protection Adviser  
Based in Lymm  
**T: 07931 592452**  
**E: joanne@roylemortgages.co.uk**

Royle Mortgage Solutions Ltd is an Appointed representative of Pink Home Loans Pink Home Loans is a trading name of Advance Mortgage Funding Limited which is authorised and regulated by the Financial Conduct Authority. Royle Mortgage Solutions Ltd Registered Office address 11 Tabley Gardens, Mapple, Stockport, SK6 7JY. Registered in England No. 5704696

## OPTICIANS

**ADCOTT OPTICIANS.** State of the Art opticians in the heart of Lymm Village. Comprehensive sight tests and a wide choice of spectacles tailored to you, whatever your budget. **01925 757075** (G11/18)

## PAINTING &amp; DECORATING

**BENJAMINS PAINTERS AND DECORATORS.** 17 years professional experience in commercial and domestic painting. We provide a competitive price, reliable service, releasing you to complete your home and office work. **Telephone 07837 4225 for further details please phone: 01925 213210 or e-mail: info@warringtonaccountants.co.uk** (G\*/17)

## PLUMBING

**CL PLUMBING AND GAS SERVICES**  
Local honest plumber covering all aspects of plumbing and gas works. Boilers and central heating installed and repaired. Bathroom suites supplied and fitted. Cookers and fires fitted. Landlord gas safety checks. All plumbing emergencies - 24 hour call out. No job too small. OAP Discount rates. **Tel Craig 01925 819692 07851 405466 www.warringtonplumbingservices.co.uk** (G2/18)

## Gas Safe Registered Engineer

Andy Gas of Lymm, specialist in: Boiler upgrades, servicing, repairs to all domestic heating and gas appliances. For a professional service call Andy **07753 838129 or 01925 753712** (G2/18)

## RE-UPHOLSTERY

**Orchard Soft Furnishings**

RE-UPHOLSTERY  
CURTAINS • BLINDS  
FREE MEASURING & FITTING  
TEL: (01925) 756388  
**www.orchardsoftfurnishings.co.uk** (G11/18)

## TAXI / PRIVATE HIRE

**Horn's**  
Airport Transfer & Taxi Specialists  
**CALL MARTYN: 01925 751761**  
**MOBILE: 07881 786250** (G3/18)

## TUITION

**JustEnglish**  
SPECIALIST ENGLISH TUITION

100% Pass at GCSE Summer 2017  
**Call Wendy 07863 888 599**  
**www.justenglishlymm.co.uk** (G1/18)

## WINDOWS &amp; GLAZING

**LYMM WINDOWS & CONSERVATORIES LTD, BY NEIL COPELAND.** Specialist in uPVC double glazing windows, doors, porches, conservatories, also fascias and guttering. FENSA registered. All work guaranteed. **Tel: 01925 756138 / 07961 361550.** (G2/18)

## MOTORING SERVICES

## CAR SALES

**PARKVIEW CAR SALES**

**We buy and sell QUALITY CARS**  
**Best price paid**  
**Telephone Peter on 01925 575737 / 07957 545479**  
23 Padgate Lane  
Padgate, Warrington  
Cheshire, WA1 3RS (G\*/18)

**Lymm Life**

offers a cost effective local **LEAFLET DELIVERY** service at competitive prices. We can also design and print leaflets with our in-house design team.

**Call us now on 0800 955 5247**



# Banner & Co

Independent Residential Sales and Letting Agent



## WHY THROW YOUR MONEY AWAY?

### WOULD YOU PAY AN ESTATE AGENT NOT TO SELL YOUR HOME?

We don't take your money and then sit back and relax  
**'NO SALE, NO FEE'**  
is our guarantee to you

You don't pay us until we successfully sell your home because we think that is fair

GET IN TOUCH WITH US  
TODAY TO SEE EXACTLY  
WHAT WE CAN DO  
FOR YOU



**01925 753636**    **[www.bannerandco.com](http://www.bannerandco.com)**

*Please note that if you have already instructed another agent, we would advise you to check any agreement you may have to ensure you are not liable for more than one commission by instructing us as your agent*

