

Lymm

Life

FREE EVERY MONTH

October 2017

Issue: 223



urban

BUILDING PROJECTS LTD

**Extension &
Building Renovation
Specialists**

Tel: 01925 730888

www.urbanbuildingprojects.co.uk



Boost for Foodbank

Page 3



**LYMM
PARISH
COUNCIL**

Approved by Lymm Parish Council as the official magazine for Lymm

Sextons

2 Eagle Brow, Lymm, WA13 0AD

Try our new fat free and healthy alternative Sourdough range of breads.

Available 7 days a week!

www.sextonsbakery.co.uk

01925 753669

Hale

CARPETS & FLOORING

See our main advert on page 20

01925 756275

www.halecarpets.com

Banner & Co

Independent Residential Sales and Letting Agent

See our main advert on the back page for details

01925 753636

eden

RESIN BOUND SPECIALIST

www.eden-resin.co.uk

01925 263125

Regular news updates at www.lymmmlife.co.uk

Editor's Comment



Editor
Gary Skentelbery

Production
Paul Walker

Advertising
James Balme
Freephone
0800 955 5247

Editorial
01925 623633

Email
info@lymmlife.co.uk

Websites
www.lymmlife.co.uk
www.culchethlife.com
www.frodshamlife.co.uk
www.warrington-
worldwide.co.uk
www.warrington.tv

Address
New Media Centre
Old Road Warrington
WA4 1AT

*Lymm Life is published
monthly by Orbit News Ltd.*

*The contents of this magazine
are fully protected by copyright
and nothing may be reprinted
or reproduced without prior
permission of the publishers.*

*The publishers are not liable for
any statement made or opinion
expressed by third parties in this
publication.*

Printed by TwentyFourSeven

WHAT has been achieved by the consultation event held in Lymm to give local people an insight into the borough council's Local Plan Preferred Development Option proposals.

Precious little, according to many of those who attended.

In fact, if the event had been organised with the deliberate intention of spreading alarm and despondency, it could hardly have done a better job.

What was not made clear enough is that this consultation is not into the Local Plan – that comes next year.

This consultation is into the Preferred Development Option proposals, which are a precursor to the Local Plan, and which are not cast in stone.

So a great deal of worry may have been caused needlessly.

We know more housing is needed and that Lymm must take its share.

But 500 houses on Green Belt

land? Surely not?

There is probably land enough for that number of houses without touching the Green Belt at all.

The plans on display at the consultation event showed potential sites for 2,400 houses, so clearly if the village has to provide only 500, most of them will not be needed.

How much unnecessary worry will that have caused? How many properties blighted?

The plans also appeared to show developments that would close the gaps between Lymm and areas such as Broomeedge, Oughtrington and Thelwall, totally changing the character of the village. We cannot believe the planners really want to do this – and it is up to the people of

Lymm to make sure they don't. Much can be done to influence them before the Local Plan itself arrives.

The consultation so far has been flawed. Most of it held in August, when many families were away on holiday. Many areas – including neighbouring areas such as Grappenhall and Thelwall – not given a meeting at all.

A calm assumption that people want Warrington to become a city when in fact you would be hard pressed to find anyone who does outside the confines of the Town Hall.

Local councillors say they will be working hard to minimise the impact of the proposals and we can only hope they – with the support of local people – will be able to influence the planners. But don't expect them to be able to work miracles.

N & J STANHOPE

Coal and Log Supplies

Best Quality Coal
Smokeless Fuel
Logs Supplied in Bags and Bulk
Fresh Bacon and Eggs

Open 6 Days. Closed Sunday

**Broomeedge Farm
Burford Lane, Lymm WA13 0SE**

**Tel: 752830
Mobile: 07979 785 421**

Back pain? We can help



CHESHIRE
Natural
Health

We offer effective treatments including:

**Osteopathy, Physiotherapy
Bowen Technique, Reflexology
Acupuncture, Massage**

Please call to find out more
Tel: 01925 730123

www.cheshirenaturalhealth.co.uk
Cheshire Natural Health, Beehive House, Tarporley Road, Stretton, Warrington

fdr
law

Commercial
Commercial Property
Litigation
Employment
Wills
Trusts
Probate
Personal Injury
Conveyancing
Crime
Family & Divorce

01925 231000

info@fdrlaw.co.uk

Warrington
Stockton Heath
Frodsham

www.fdrlaw.co.uk



Rosebank & Naturegarten

WELCOME TO ALL NEW CHILDREN IN SEPTEMBER



We have great spaces and places for children at Rosebank and Naturegarten. Part time, full time sessions available for term time and all-year round

Find out how your child can enjoy the Rosebank and Naturegarten experience.

THE ROSEBANK CENTRE & ROSEBANK NATUREGARTEN

PEPPER ST

WWW.RNGROUP.CO.UK 01925 320161

Former Mayor provides boost for Foodbank

WARRINGTON South MP Faisal Rashid has provided a £4,000 boost to the town's Foodbank thanks to fund-raising during his term of office as Mayor of Warrington.

The newly elected MP met up with Warrington Foodbank volunteers in Lymm to handover the funds.

He said: "In 2017 it is a disgrace that families across Warrington still face being left hungry and having to rely on support from foodbanks."

"Data collected by the highly regarded Trussell Trust shows foodbank use continues to rise. In 2010-2011 the number of three-day emergency food supplies given by the Trussell Trust Foodbanks to people in crisis was 61,468.

In 2016-2017 the figure was 1,182,954.

"Warrington Foodbank does a great job in providing emergency help and support to people in crisis locally. I am proud that during my Mayoral year my charity appeal raised a record amount of just under £70,000. This was a significant achievement and I sincerely thank all the people and organisations who supported my Mayoral charity appeal. I am pleased that Warrington Foodbank will benefit from funds raised.

"As the local MP, I will continue to support our local foodbank, however the Government must act to address the root causes behind the increasing numbers of people who are turning to foodbanks for help.

"Thank you to everyone in Lymm for the support you have given me.

It is a real honour and a privilege to represent you as the local MP. I am fully committed to working and supporting you in any way that I can.

"Locally we are facing big issues ahead. Warrington Borough Council's Local Plan Preferred Development Option could potentially have huge implications for us all, for decades to come. My constituents in Warrington South are most affected by the proposals. I am working hard to ensure that the views of people in Lymm and across Warrington South on the proposals are heard. I believe that proposals for future development must be balanced and they must support both the current and future needs of Warrington residents. Plans for our town should not press ahead with development at the expense of a good quality of life for current residents.

"I called on the Council to extend the deadline of the Local Plan consultation, which they have agreed to. Comments can now be sent in up until September 29.

"As the local MP I will continue to speak out on behalf of local residents on these issues to ensure that any proposals that come forward are what our town and people need and want."



Rain didn't stop play at cricket club open day

It was, after all, cricket. So no-one should have been surprised that it rained on Lymm Oughtrington Park Cricket Club's open day.

But the club wasn't about to be beaten by the weather and members, players, friends and family turned up at the Oughtrington Lane ground determined to have fun.

There was a bouncy castle for youngsters with excess energy, a barbecue for those with hearty appetites, a bowling machine for those who wanted to test their batting skills and, of course, cricket.

A kids and parents contest was played in a steady drizzle with many - but not all - abandoning traditional whites in favour of waterproofs. The result was close enough for both sides to claim victory!

The weather improved in time for the highlight of the day - a match between the Lymm Oughtrington Park and Woodley Women's teams - eventually narrowly won by

the visitors by somewhat devious means!

Woodley batted first and scored 92 runs. Lymm struggled to keep up with the asking rate, apart from Amy Coutoure who hit 25 very quickly but then, under the rules,

had to retire.

Eventually, Lymm's last pair, Gail Wade and Rosie Leavy, needed to score 26 from the last three overs - a tall order. Again, the rules of the day came into play. If Lymm lost all their wickets, the big hitting Amy

would be allowed to return to the crease.

Woodley quickly recognised this as a major threat so made sure they didn't get any more wickets and eventually won by 10 runs.

But there were no sour grapes on Lymm's part as it was a good game, played in a fine spirit.



Hardy souls who took part in the parents and kids match



The kids and parents match in progress in the rain.

Sophies Soft Furnishings

- Curtains • Roman Blinds
- Cushions • Tiebacks • Poles
- Tracks • Valances • Pelmetts

We design, make and fit to meet your exact requirements.

For free home visit or advice ring **Anne on 01925 754446**

www.sophiesofffurnishings.co.uk

We Clean Ovens ...so you don't have to!

Call us today to leave your cooking appliances sparkling, using our eco friendly products.



Local | National | Affordable

Call for LOCAL service

Our oven cleaning experts will leave you free to enjoy your valuable leisure time.



01925 453377 oveni.co.uk

What's On in conjunction with Lymm Parish Council



October 10
LYMM PARISH COUNCIL
Lymm Parish Hall 7.30pm

LYMM THURSDAY EVENING BRIDGE CLUB

Lymm Village Hall every Thursday 7pm

MAPLE LODGE ART GROUP

Meet each Wednesday 9.30am - 12.30pm
Oughtrington Community Centre, Lymm
Details: 01925 755126

ROTARY CLUB OF LYMM

Every Wednesday at Statham Lodge Hotel
7.15pm for 7.30pm
Contact the secretary 01925 650189

LOVING HEARTS & HANDS

Knitting for charity at Lymm Methodist Church,
2nd and 4th Thursday each month.
1.30pm - 3pm. Details: 01925 753298

MARKET LUNCHEAS

Eagle Brow Methodist Church
3rd Thursday in the month
Light lunches 12 noon till 2pm. All proceeds to
Youth For Christ and YMCA Room at The Inn

LYMM SCOTTISH COUNTRY DANCE CLUB

St Mary's Church Hall
Second and fourth Fridays (Sept - May)
7.30pm. Details: 753853

GARDENING CLUB

Meet Third Wednesday of the month
Lymm Baptist Church, Higher Lane. 7.30pm
Visitors welcome. £2 includes tea and cake

LYMM FLORAL ART GROUP

Lymm Village Hall
Third Monday of the month (except August)
at 7.30pm

LYMM PHOTOGRAPHIC SOCIETY

Every 2nd and 4th Wednesday
(ex July & Aug), 7.30pm
Spread Eagle pub, Eagle Brow.
Details: www.lymmphotosoc.org.uk

LYMM WINE AND BEER CIRCLE

3rd Wednesday of the month, 8pm
The Spread Eagle Hotel
Details: 01925 604400

LYMM CONCERT BAND

Rehearsals every Thursday evening
United Reformed Church, 8pm.
Details: 01925 752934

THE VENUE, LYMM

Chess Club every Monday from 6pm,
Open Mic Night every Tuesday from 9pm,
free chinese meal and 2-1 cocktails
every Wednesday, Live Music every
Thursday and Saturday

LYMM WI

Every second Wednesday, 2-4pm at Lymm
Youth and Community Centre. Visitors
welcome.

LYMM BOOK CLUB

Second Thursday of the month 7.30pm,
Spread Eagle, Eagle Brow. Details 01925
752371

LOW CARBON LYMM

Every second Monday of the month. 7.30pm,
Spread Eagle. 07786 074741 all welcome

4LYMM VOLUNTARY ORGANISATION

Meet every 2nd Monday at 7.30pm in the
Bridgewater Club, Whitbarrow Road.
All welcome. Tel 01925 756378 for details.

LYMM AND DISTRICT MIXED VOICE CHOIR

Every Wednesday 7.30 Lymm Methodist
Church. Contact 01925 601664.
cath@cstones.co.uk



**LYMM
PARISH
COUNCIL**

Next meeting October 10
Lymm Parish Hall 7.30pm

Street busker proves to be a hit in Lymm

STREET busker Christopher Schofield proved to be a big hit in Lymm village when he made an impromptu performance on the historic Lymm Cross.

It was the first time Chris has visited the village after previously performing on a regular basis in Warrington and Stockton Heath.

Those in the village who witnessed the performance couldn't recall ever seeing a busker performing in the village - other than at special occasions like Dickensian Day.

His performance was captured

"live" by **Lymm Life** and soon became a big hit on social media, attracting many positive comments and over 3.5k viewings.

As a result Christopher also got a guest slot to perform at The Venue in Lymm village centre.

Check out his performance by watching the video on www.lymmlife.co.uk



High quality care at
reasonable prices

Grappenhall
DENTAL PRACTICE

Independent private practice

Private dentistry at NHS prices (conditions apply)

Now taking new clients due to
expansion after 11 successful years

Easy parking/groundfloor easy access
including wheelchair

State of the art equipment / highest standards
of cleanliness / cross infection control

Emergencies seen same day / no waiting lists
Late night opening Tuesdays until 8pm

Dr Andrew Brown and associates welcome new patients

Tel: 01925 210977 or 01925 481341
148 Knutsford Road, Grappenhall, Warrington WA4 2PW
grappenhaldentalpractice@virginmedia.com
www.dentistswarrington.co.uk



simple solutions
Financial Management Ltd
INVESTMENTS & PENSIONS

INVESTMENTS

Our investment expertise will ensure that you have the most suitable investment to help you achieve your financial goals.

We use:

• Asset Allocation • Risk Profiling • Diversification • Correlation

PENSIONS

Pensions have changed since the March 2014 budget and you now have a lot more options to consider

TECHNOLOGY

Simple Solutions uses the latest technology to keep you updated, even when you are on the move or abroad, check out our website for more details.



The Base, Dallam Lane,
Warrington, Cheshire
WA2 7NG

Tel: 01925 266628 Fax: 01925 267043

www.simplesolutions.financial @SimpSolsIFA

Simple Solutions Financial Management Ltd is authorised & regulated by the FCA. The registered office is 1st Floor, 67 London Road Stockton Heath, Warrington WA4 6SG. Registered in England & Wales. The company Re No 6920858

Meet your MP Faisal Rashid

Faisal holds regular surgeries to discuss any issues that you may need help with. **Private surgeries** take place every Friday. Simply call **01925 657600** to book an appointment, you can also send him an email at faisal.rashid.mp@parliament.uk

Open surgeries are on the first Saturday of each month, no appointment necessary - just drop in at 1 Wilson Patten Street, WA1 1PG between 10:00-12:00.

Stay up to date with all current news, policies, and events at www.faisalrashid.com, [facebook.com/faisalrashidmp](https://www.facebook.com/faisalrashidmp) and [twitter @faisalrashid6](https://twitter.com/faisalrashid6) and keep an eye out for local street surgeries coming soon to a doorstep near you!



**"Working hard for all communities in
Warrington South"**

Appleton | Bewsey & Whitcross | Chapelford & Old Hall | Grappenhall | Great Sankey North & Whittle Hall | Great Sankey South | Latchford East | Latchford West | Lymm North & Thelwall | Lymm South | Penketh & Cuerdley | Stockton Heath

Produced by Faisal Rashid MP, House of Commons, London SW1A 0AA

www.faisalrashid.com

LEADERS IN FAMILY LAW.

Delivering the results when it matters

Specialising in:

Divorce & Separation

Financial Settlements

Child Related Matters



Stockton Heath 01925 912 277

Hale 0161 926 1430

Manchester 0161 834 2623

caroline.swain@bpsfamilylaw.co.uk

www.bpsFamilyLaw.co.uk

The Manchester Grammar School

A true adventure for boys with enquiring minds

Whole School Open Event

Thursday 28 September 4:30 pm - 7:00 pm

Our Junior boys gain automatic entry into Senior School

Results matter

One of the leading academic schools
in the UK for boys aged 7-18

22 Oxford and Cambridge offers, 2017

51 Medicine offers, 2016

82 London offers (including LSE, UCL, KCL and Imperial), 2017

mgs

The Manchester
Grammar School

For further information contact
Kath Heathcote 0161 224 7201
Ext 234 or k.heathcote@mgs.org

MGS.org
@MGSmagic



Pennies added up to £239 donation to care home

A CHEQUE for £239 was presented to Lymm care home Keate House thanks to an initiative by a local newsagent.

Neil Harrop, manager at McColl's store in Statham presented the cheque to Rachel Entwistle, administration manager at Keate House, accompanied by two residents, Margaret Lupton and Betty Hodgkinson.

Many Keate House residents are avid newspaper readers, buy them from McColl's and are loyal customers at the store.

The money raised was from an initiative at the store under which one penny was donated each time a featured promotional item was

purchased. Keate House will use the money to pay for a 'Seaside Theme Day' for the 46 residents to enjoy. The day will see a visit from a donkey from the Manchester Donkey sanctuary, will include a fish and chips lunch, ice creams and sing-along entertainment with lots of fun and laughter.

A Keate House spokesperson said: "The residents would like to say a big 'thank you' to McColl's and all the customers who contributed to our charity fund."



Preschool moves to new home

A TEAM of volunteers at St Mary's Preschool, Lymm has been busy during the summer holidays preparing for the group's move to a new home - in the grounds of Cherry Tree School.

The preschool, which has operated in Lymm for 40 years, has relocated from St Mary's Church Hall and the move has provided an outdoor play area and also allowed extended opening hours.

Children aged 2-4 will now be able to attend from 9am to 3pm, Monday to Thursday, and 9am to 1pm on a Friday.

Group organisers have expressed thanks everyone who helped with fundraising to support the move.

Any enquiries should be made to preschool leader Rosie on 07947 692 003 or by email to smpg@googlemail.com

The preschool received a "good" rating from Ofsted at its last inspection in June last year.

Looking to invest in property?

Lets Invest...

- Residential & Commercial Property Management
- Property Sales
- Property Investment Assistance for Buy To Let



Call now on 01925 599111

14a Warburton House, Eagle Brow, Lymm
www.bridgewaterel.co.uk



Bridgewater
Estates & Lettings



KEATE HOUSE

CARE HOME

Quality person-centred care for your elderly loved one

Keate House is an independent family-run Care Home, specialising in providing Residential, Dementia, Respite and Day Care services for the elderly. Situated in the beautiful village of Lymm, our lovely purpose designed home is supported by our compassionate team, dedicated to providing only the best in quality person-centred care in our happy, stimulating and homely environment.

- Residential Care
- Dementia Care
- Respite Care
- Day Care

To talk to one of our Care Managers or to arrange a visit, call: 01925 752091 Brookfield Road, Lymm, Cheshire WA13 0QL
Email: info@keatehouse.com Web: www.keatehouse.com

Enriching life with quality care



Less is More!

- Get paid quicker – Improving your cash flow
- Less time spent sorting old receipts – Free up countless hours each week.
- Less jargon and more proactive advice – Watch your business flourish.

Don't let these issues hold your business back.

To find out how we can remove your financial headaches call us:

01925 761600

or visit us at:

www.stylesandco.co.uk

styles and co.
chartered accountants



Controversial plan to demolish historic Cotebrook House challenged

WARRINGTON Borough Council has been accused of not following correct planning procedures over the controversial decision to demolish historic Cotebrook House at Lymm and build six detached houses on the site.

More than 70 years after the former country house was converted to a care home, the borough council's development management committee voted unanimously there was no alternative but demolition and re-development.

But local resident Sue Thomason, who mounted a campaign opposing demolition of the property has lodged an objection to the planning decision made by the Council.

She says she has evidence that the borough council did not follow proper procedures throughout the decision making process.

In a written complaint she claims: "Regulations and conventions about making decisions were not properly followed and at least two councillors voting on this planning permission did not declare conflicts of interest."

"Also, the Council has pushed this decision through, despite many local objections and ignored all of the Government guidelines in the National Planning Policy Framework (NPPF)."

She claims the Council has also broken promises made to residents in the The Local Plan Core Strategy adopted by Warrington Borough Council in 2014 where Cotebrook

House was listed as a heritage asset.

She has called on the council to halt the demolition of the building and to investigate the matter thoroughly.

The application to build six, six-bedroom houses on the wooded site in Oughtrington Lane triggered a protest petition from people who wanted to see the locally-listed building saved.

Objectors said the house should be converted rather than demolished because of its historic interest and argued that the scheme was contrary to the local plan strategy.

They claimed the new houses would tower over existing neighbouring properties and would be out of keeping with the

area. There would also be a loss of light and of privacy and the safety of pupils at the adjoining Lymm High School should be taken into account.

However, two neighbours supported the scheme and there were no objections from Lymm Parish Council.

Committee members decided the scheme represented a planning gain as the new development would enable the narrow footpath in Oughtrington Lane to be widened.

Councillors were told that a recent application for the property to become a statutory listed building was rejected because of its condition and because very little remained of the original house.

They agreed to ask the developers if they would keep the name "Cotebrook" in the development.

Warrington Borough Council is looking into the complaint before issuing a response.



A Fresh Approach to Education



Sandymoor School is an 11-18 school, producing intelligent, employable global citizens.

Our curriculum is organized in five areas:

- Personalised Learning
- Student Ownership
- Educational excellence for all
- Community Engagement
- Enhanced Pastoral Support

OPEN EVENING: Wednesday 27th September 2017, 5pm - 8pm

OPEN DAY: Saturday 14th October 2017, 9am - 12noon

We look forward to welcoming you!

For further information please contact the school office

Sandymoor School, Wharford Lane, Sandymoor, Runcorn, WA7 1QU

info@sandymoorschool.org.uk Tel: 01928 571 217

www.sandymoorschool.org.uk

Stay in touch: Facebook.com/SandymoorSchool





Barbershop ladies home from Russia

MEMBERS of Cheshire Chord Company, the current UK silver medal ladies barbershop chorus, originally formed in Lymm, have just returned from a whirlwind week in St Petersburg, Russia.

They were one of eight groups invited to take part in the very first A Cappella Festival to be held in the multi-cultural city, alongside groups from Russia and the USA.

Along with performing at sold-out concerts in venues such as the Philharmonic Hall and St Petersburg State Capella, members of the chorus also had time to see the sights and sounds of the city, with a sun-soaked evening boat trip and days out to beautiful landmarks such as Peterhof and Catherine Palace.

Choir spokeswoman Rachel

Sheldon said: "When we arrived in St Petersburg, we didn't really know what to expect.

"We were blown away by the culture of the city, and by our audiences, who were anything but reserved. Each concert was rewarded with a phenomenal audience reaction, with cheering, clapping, and standing ovations. It truly was an unforgettable experience."

More pictures and videos from the trip at www.facebook.com/cheshirechordcompany



Twins' exam success

TWINS Josh and Joel Davies picked up a total of 20 A* and As between them in their GCSE examinations.

Joel got 11 and Josh nine - much to the delight of proud Mum Jackie. The brothers will now be staying on at Lymm High to do their A Levels.



Volunteers wanted to give Lymm a voice

VOLUNTEERS are wanted to help draw up Lymm's Neighbourhood Plan - which is seen as being key to giving local people a voice in the development of the village over the next 20 years.

Concern is growing locally that the borough council's local plan preferred option will have a major impact on the village, with 500 homes proposed on Green Belt sites.

A neighbourhood planning group is needed to draw up a blueprint that will allow the community to outline a vision for the future of the village - and then write the policies which will determine how this vision is delivered.

Neighbourhood plans, that

have passed an external review and been supported in a local referendum, have the same statutory weight as the Local Plan.

The Neighbourhood Plan will be created by the Lymm community, for the Lymm community and needs volunteers to make it work!

There will be many tasks, from delivering leaflets, to talking to residents and businesses, collecting data and maintaining a website. The group will also need help from those with planning knowledge.

Anyone interested in helping should volunteer now by emailing afraidgley@lymmparishcouncil.gov.uk

Skater Amy celebrates at the double on and off the ice

A 13-year-old Lymm girl is celebrating at the double after winning an ice skating gold medal on top of being crowned Miss World Natural Beauty for England.

Amy Nelson, a pupil at Lymm High School, followed up her Miss World Natural Beauty success by winning a gold medal with Team GB at the recent ice skating world championships.

Amy won Gold in her Division for Team GB in Dijon, France.

Her Coach Donna McCarthy has been the driving force behind the team off ice.

She said: "These girls are all dedicated to their sport and work so hard in practice, but above all they love skating and enjoy doing it. It has been a pleasure to see them progress and watch their confidence grow."

"I knew they would do well at the competition, but this is beyond my wildest dreams. (7 golds, one silver, 2 bronze, 4th, 5th & 7th place). We are all incredibly proud."

There were over 25 teams from all over the world including Russia, USA, Ukraine, Spain, Japan, Ireland, Italy, Germany, Mauritius, France and many more.

The team now aims to go on to the next year's World Championships.

Amy trains times a week and has recently passed her Level 4.

Her on ice coach Jane Dawson added: "I have been Amy's Ice Skating Coach since she stepped onto the ice three years ago for the beginners 'Learn to Skate' classes.

"Her natural talent and keen work ethic have already brought her great and deserved success in a short period of time.

"Amy is a beautiful skater and I look forward to working with her into the future to achieve greater success in a challenging but very rewarding sport that she loves.

She trains at Altrincham Ice rink and also trains at Northwich & Wythenshawe for Off Ice, skating on wheels!

Commenting on her daughter's success proud mum Diane said: "It was a weekend filled with nerves, excitement, tears of pride and joy and a haul of medals!

"Travelling with Team GB, their amazing coach and the wonderful supportive parents, Amy and her friends competed at the World Inline Championships and literally cleaned up in their respective categories.

There were so many trophies on this flight heading home I wondered if the flight could take off with the extra weight!

"What was so good about the trip was watching the girls support each other doing hair, make up, offering support and encouragement – and even the odd pep talk (remember don't fall!).

"They were all superstars and I think the level of encouragement they offered each other went a long way to helping them achieve all their success – although fab coaching and great routines also played their part!"

Amy has also won the title of Miss World Natural Beauty England 2017/2018 which took place earlier this year when she raised well over £1,000 for various charities including the Headway Charity Brain Injuries and also the Christies' which has included cake sales at school, raffles, donating food to the Warrington Food Bank and many more funding events.

Amy was up against many other young girls and she managed to win the title which she now has for 12 months and then has the chance to be crowned World Natural Beauty International.



PRIESTLEY
◆◆◆ COLLEGE ◆◆◆
WARRINGTON

OPEN EVENTS

WED 4 OCT 5:30pm - 8:00pm

THU 5 OCT 5:30pm - 8:00pm

SAT 14 OCT 10:30am - 12:30pm

WED 8 NOV 5:30pm - 8:00pm

01925 633591

www.priestley.ac.uk

for ENROLMENT SEPT 2018





Navigating troubled waters?

Slater Heelis has provided expert advice to families for over 240 years.

Our team of Resolution family specialists are here to support you with first-class legal advice to provide the direction you need during separation. The team has expertise in divorce, separation, civil partnerships, finances and children arrangements. When it's appropriate for you, we are also able to offer collaborative law and mediation services.

Our family team all live in the South Manchester and Cheshire area. Living within the same community provides us with unique insight into what affects your daily lives. You are just a ride away from one of our offices in Sale, Timperley or Manchester. We have additional meeting facilities in Warrington.



"Living in Cheshire offers the best of both worlds, idyllic countryside with a close-knit community and easy access the Manchester's vibrant city centre for work and play. I couldn't think of anywhere better to raise my young family."

Phillip Rhodes | Family Solicitor

Get in touch with our family team

✉ family@slaterheelis.co.uk

☎ 0161 672 1247

🌐 www.slaterheelis.co.uk

🐦 @SlaterHeelisLaw 📘 /slaterheelis

slaterheelis ^{LLP}
SOLICITORS

 **resolution**
first for family law



LYMM HIGH SCHOOL SIXTH FORM

We are extremely proud of our sixth form students, with 33% of our students achieving A* - A grades at A Level

We are confident that, whatever your passion, Lymm High Sixth Form offers the crucial support and guidance needed at Post-16 study to enable you to secure your future.

We have a limited number of places available in our Sixth Form; however we always welcome applications from external students.

OPEN EVENING

THURSDAY 9TH NOVEMBER 2017

When our application process for
September 2018 will open



THURSDAY

With so much on offer, so special. Come along excellent opportunities opportunity to tour the Student Ambassador

www.lymmhigh6thform.org.uk

LYMM HIGH SCHOOL



BE SUCCESSFUL
ENJOY LEARNING
ACHIEVE YOUR
POTENTIAL

OPEN EVENING

DAY 5TH OCTOBER 2017 5PM - 8PM

Our autumn event will showcase the many aspects that make our school and be part of a highly ambitious and successful school, which provides for enrichment, enhancement and extended learning. You will have the opportunity to visit the school, meet current students – including our newly inducted Year 7 students - and speak to teaching staff about what we can offer your child.

www.lymmhigh.org.uk

PRICES FROM ONLY
£1995
 INCLUDING FITTING

It's your conservatory... only better!



ecohybrid
 ALL YEAR ROUND INSULATION

**KEEP YOUR
 COOL
 THIS SUMMER!**

Conservatory Roof Conversions

- 1 day installation
- Reduces rain noise
- Stops sun glare
- Stops furniture fading
- No fuss - no mess
- Save on heating bills
- Suits ALL conservatories
- Nationwide service

*"We didn't use our conservatory because it was always either too hot or too cold. Now we spend time in there every day."
 Mr & Mrs Cameron*



4 SEASONS
 CONSERVATORY ROOFS

**PAY NOTHING
 FOR 12 MONTHS
 THEN TAKE
 2 YEARS
 INTEREST FREE CREDIT***



Full bespoke conservatory & orangery design & build service



Next generation sliding doors

multi slide
SLIDE & FOLD DOORS

Open up a New World!

- Easy, smooth operation
- No unsightly hinges
- No restriction on which part of the door you open
- No wasted space



Large showroom - OPEN 7 DAYS A WEEK

Call in or ring for free quotation



your CHOICE
 your home your choice
 AS SEEN ON TV

0800 169 48 22
www.your-choice.uk.com

Your Choice Home Improvement Centre,
 590 Manchester Old Road,
 Middleton, Manchester M24 4PW

OPEN: Mon-Fri 9am-5pm
 Sat & Sun 10am-2pm

*Written details on request.
 Authorised and regulated by the Financial Conduct Authority

Lymm High School celebrates 'best' exam results for many years

STUDENTS and staff at Lymm High School are celebrating following the "best exam results for many years"

The school recorded another excellent set of A* level results with 33% of all A* levels graded at A*/A, with 59% A*-B grades and 85% A*-C. The overall pass rate was over 99%.

Headteacher, Gwyn Williams said: "We are delighted with these results. Last year's were strong, but the headline figures this year are a good deal higher and, in fact, are the best the school has achieved since at least 2011.

"Most of the exams taken were under the new, reformed A* level specifications, which are significantly tougher than previous years, and so to be able to post results like this is especially pleasing. Students and

staff knew that they would have to work harder than ever to succeed in these new courses and I cannot praise them highly enough for their response to the challenges they faced."

Five high flying students achieved A* grades in all of the subjects they studied: Francesca Brown, Aoife Davenport, Fan Grayson, Sarah McGrail and Victoria Ramsbottom. There were 16 students who gained at least two A* grades and a total of 26 students who gained straight A* or A grades.

Head of Sixth Form, Mrs Hayley Jennings, said: "It is incredible to see the students getting the rewards for all their hard work over the past couple of years. The vast majority are

now off to study at their first choice university, but many others have also been successful in securing high quality apprenticeships, training or jobs. They are such a great group of young people and I want to wish them all the very best as they head off to start the next chapter in their lives."

Meanwhile Lymm High also reported a "strong performance" at GCSE, following on from the excellent A Level results.

Eighty two per cent of students gained at least Grade 4 in both the new English and Maths exams, which is up from 77 per cent compared to the equivalent A*-C measure last year.

The government is trying to place a good deal of importance on the number of students gaining at least Grade 5 in both English and Maths and 65 per cent of Lymm High students met this benchmark, which is likely to compare extremely well with schools right across the country.

Performance at the top end was also impressive, with 27 per cent of students gaining at least five A* or A grades and 47 students gaining at least eight A* or A grades.

Mr Williams said: "I don't mind admitting to having been a little more nervous than usual in the run up to results day this year. Whilst things in school had felt good and we were pretty confident we would do very well, this was the first cohort to sit the new GCSE courses in English and

Maths and, with all the uncertainties that come with such big changes, there was definitely tension in the air.

"In the event, we did not need to worry at all. The results are exceptionally strong in English and Maths, and we are absolutely delighted to see the headline figures continuing to rise. As with A* level results, these are the best results the school has seen for many years.

"All in all, it has been a wonderful morning. Watching students opening their envelopes and seeing their faces as it dawns on them how well they have done is one of the best bits of the job and, from a headteacher's perspective, it is just as rewarding to see the looks of pride on the teachers' faces.

"Really well done to everyone involved; I know how hard people have worked and it is lovely to see so many students doing so well and to see more evidence that the school is improving all the time."



Hill and Company
Solicitors



For further information please contact:

Josephine Carter
on
0161 928 3201
or
07843 207830

j.carter@hillandcompany.co.uk

Wills, Probate and Elderly Client Law

We specialise in supporting the elderly in arranging their finances and dealing with their legal issues. This includes wills, financial and health and welfare lasting powers of attorney, residential care home fees, deputyship and other court of protection applications, living wills, and any other legal matters.

Josephine Carter has many years of experience working for, and supporting elderly clients. She is a Solicitor and Partner at the firm, and the firm has been in existence for over 170 years providing legal services to the community.

The expert legal staff working at the firm currently have a combined 100 years' worth of experience in this area of law.

Josephine Carter carries out many home visits for clients who are housebound or have difficulty getting out.

Please contact Hill and Company Solicitors to arrange an appointment with Josephine Carter for her to visit you or to come into the office if you need any legal advice or support in dealing with your legal matters.





Vivark Care provides affordable products and quality services that can help make life a little easier for you or someone you know.

Legal Services



Future planning

Experienced solicitors providing services in Lasting Power of Attorney, Wills, Conveyancing and Probate.

Vivark Care Shop



Over 14,000 products - shop online today!

Competitively priced and suitable for all ages and abilities, including; bathing, kitchen, toileting and mobility aids, paediatric, personal and continence care.

visit www.vivarkcareshop.co.uk

Home Monitoring



30 day free trial

A discreet home monitoring system to help people live in their own homes for longer.

Epilepsy Solutions



discount available

Products that monitor movement and instantly alert connected carers upon the onset of symptoms.

Stairlifts



A range of hoists, both internal and external stair and home lifts. Available to rent or buy.

Vivark Lifeline



24 hour telecare that allows people to live more safely as help is only the press of a button away.

Funeral Plans



£150 discount

Affordable and fully guaranteed Pre-paid funeral plans with Co-op, the UK's leading funeral provider.

Contact us today and let us help you. Dont forget to quote WW17!

0151 290 7002 info@vivarkcare.co.uk vivarkcare.co.uk

Graduate fashion show

FASHION students from Lymm High School Sixth Form showcased their final collections with a stylish end of year show.

The students, from the Sixth Form's BTEC Level 3 Fashion and Clothing Diploma, have been working hard all year and displayed their best catwalk designs in front of a packed audience in the school's Main Hall.

The show featured catwalk models recruited from students in all years. A wide range of clothes were modelled on the catwalk inspired by their own chosen theme, such as riots and anarchy, fusion cultures and Portuguese architecture. All of the models and designers worked in a professional manner and the event was an enormous success!

Year 13 BTEC Level 3 Fashion student, Alice Beckett, commented, "The fashion show was a perfect end to an amazing two years on the course."

Fellow student, Alfie Chambers, who recently received an offer from the prestigious London College of Fashion, added, "Seeing my final year work on the catwalk made me really proud and I cannot wait to see what the future brings."

The show was watched by an audience including, headteacher Mr Gwyn Williams, Lymm High School staff, students, family members and friends, and representatives from Universities also popped along to support the show.

Course Leader for BTEC Level 3 Fashion, Rachael Doherty, was full of praise for all the students,

"The fashion students delivered an excellent show of all their incredible work and it is inspiring to see such dedicated and highly creative students emerge once again from Lymm High School. The second year students will continue their studies on some of the most prestigious BA Honours courses in

the UK and they all deserve every success!"

The Fashion show was an end of year graduate show organised by the school's creative arts department.

Anyone interested in joining a creative course at the Sixth Form can find more information on our Art, Design, Fashion and Photography courses page on the school's website.

www.lymmhigh.org.uk



PRIMROSE HILL NURSERIES

SUMMER BEDDING PLANTS & HANGING BASKETS READY NOW!

DISCOUNTS FOR QUANTITY

Caring Family Business

Open 7 days a week

Warrington Road, High Legh, Knutsford, Cheshire WA16 0SQ

Telephone
01925 752635



QHOTELS
INSPIRED BY YOU

JOIN FOR ONLY £20.17 AND RECEIVE YOUR 1ST MONTH FREE!

Get ahead now and get into shape ready to start 2018 with a HEALTHIER YOU!

- State-of-the-art Pulse equipment
- Over 55 group exercise classes a week
- Spinning
- Bootcamp*
- Indoor swimming pool
- Sauna, steam room & whirlpool
- Spa
- Discounts throughout the hotel
- FREE parking and Wi-Fi
- Member social events



Enquire today - call 01925 730 000 & quote 'LYMM' - Bring in this advert to redeem the offer.

01925 730 000 | parkroyalleisureales@QHHotels.co.uk
Stretton Road, Stretton, WA1 4NS
QHHotels.co.uk

THE PARK ROYAL
Warrington,
Cheshire

Terms and conditions apply and offer subject to availability. Offer valid until 30th October 2017. Booking is essential. *Bootcamp sessions are excluded from this offer and will incur an additional charge. For full terms and conditions speak to the health club team.

Ravenbank
SCHOOL

**Invitation to all Parents
of Children Starting
School in
September 2018
Open Afternoons
4th & 5th October 2017
1:30pm**



No booking is necessary for these events. Please contact school if you are unable to attend these dates.
Tel: 01925 753926 email: ravenbank_primary@warrington.gov.uk

Withington Girls' school celebrate outstanding results

Withington Girls' School has achieved another set of outstanding results in A-Level and GCSE examinations, which have seen them ranked as the best girls' independent school in the north of England across several league tables published in the national press since the 2017 results were released.

The School's Sixth Form cohort of 69 girls achieved exceptional A-Level results, with 91% of subjects taken securing A*, A or B grades, while Year 11 pupils celebrated their success in GCSEs, attaining 93% grades A* and A, or 9.7 under the new numerical grading system.

At GCSE, A* was the average grade achieved, including in Mathematics where 91% of entries were graded A*, Biology (91%), Chemistry (87%), Physics (91%), Double Award Science (84%), and Geography (80%). In Computer Science and ICT 100% of grades were A* and in Further Mathematics 81% of the 47 entries were awarded the exceptional A* grade 'with Distinction' or A*.

This year, ten girls – which represents more than 14% of the

cohort - will take up their places at Oxford or Cambridge to read for degrees in a variety of subjects including Classics, Fine Art, Engineering, History, Medicine, Philosophy, Politics and Economics.

Of 64 girls heading to university this year, 54 have gained places at a Russell Group university (84%) with others going to UK top-ranked universities such as St Andrews and Lancaster.

Headmistress, Mrs Sarah Haslam, said of the A-Level results: 'It has been an absolute pleasure to work with this year group who have made such a fantastic contribution to the life of the school. They fully deserve these wonderful results which not only reflect their high academic ability, but also their commitment and their passion for learning.'



“A friendly, caring environment in which each girl can feel confident and flourish”



OPEN DAYS

Junior School

For girls aged 7-11

Senior School

For girls aged 11-16

Sixth Form

For girls aged 16+

Thursday 9th November

4.30pm to 6.30pm

Saturday 11th November

10.00am to 12noon

An Open Evening for Sixth Form students will be held on Tuesday 3rd October, from 6.00-8.00pm

Means
-tested
bursaries
now available
from Year 5
upwards



Withington
GIRLS' SCHOOL

To arrange a tour call 0161 224 1077
Wellington Road, Fallowfield, Manchester M14 6BL

wgs.org

MillerCare

Mobility Specialists



NEW SUPERSTORE NOW OPEN

1 Kerfoot Street, Winwick Road, Warrington, WA2 8NU
01925 651114



- Motability Scooters
- Powerchairs
- Rise and Recliner Chairs
- Stairlifts
- Wheelchairs
- Adjustable Beds and Accessories
- Mobility and Walking Aids
- Bathroom Adaptations
- Hoists and Slings
- Toileting and Personal Care

Call for a
Free
catalogue



Stannah



 **Motability**

For more information call MillerCare

01925 251212 | 1 Kingsway North, Manchester Road, Warrington, WA1 3NL

01925 651114 | 1 Kerfoot Street, Winwick Road, Warrington, WA2 8NU
www.millercare.co.uk

Hale 
CARPETS & FLOORING



Find the perfect flooring for your home in our showroom plus expert design and installation advice. We have a huge range of quality carpets, Kardean Design Flooring, Ted Todd Hardwood, Harvey Maria and more. Free measuring and quotation service available.

Lymm Road, Thelwall, Warrington, WA4 2TG
01925 756275 | halecarpets.com



EXCHANGE YOUR GOLD AND SILVER FOR INSTANT CASH




All items of jewellery accepted

Did you know...?
We accept silver jewellery, cutlery, tea sets, spoons, cigarette cases, candlesticks, trophies, trays, medals, coins and pocket watches.

**ROLEX WATCHES WANTED!
ANY CONDITION**

Open: Tuesday-Saturday: 10am - 5.30pm
1 London Road, Stockton Heath
(First floor entrance on Fairfield Road)
07544 486 621


GOLD & SILVER
BULLION DEALER

STOCKTON FRYER 

111 London Road, Stockton Heath

Gluten Free Menu Now Available

Fish & Chips, Chinese Meals, Burgers, Kebabs and more...

We deliver to WA4: Stockton Heath, Stretton, Latchford, Appleton Thorn, Grappenhall, Pewterspear, Walton
Minimum order of £10 (£1 delivery charge applies)
Over 4 mile radius £2 delivery

Phone orders for Chinese meals welcome 01925 264345
Open lunchtime and from 4.30pm.
Late closing Thurs & Sat (11pm) and Fri (11.30 pm)

WELCOME TO THE IDEAL BUILDING COMPANY


BUILDING PROJECTS LTD



Our mission is to deliver a high standard of building work at competitive prices and give complete client satisfaction every time.

Our services include: Extensions & Conversions, Complete Refurbishments, Loft Conversions, Structural Works, Homes Offices, Kitchen & Bathroom fittings, Electrical, Heating and Plumbing works, Full Plan & Design Service and General Building work.

For a FREE consultation please call
01925 730888

Urban Building Projects Ltd.
410 Europa Boulevard, Gemini Business Park, Warrington, Cheshire, WA5 7TR
Email: info@urbanbuildingprojects.co.uk Web: www.urbanbuildingprojects.co.uk



Aspire Computers Home Support 

Local Warrington Based IT Company for all your Support Requirements

Fixed Price Home PC Support
First PC Diagnostic Check FREE

When you choose the annual home support option with us

 01925 251143
sales@aspire-computers.com
www.aspire-computers.com

LYMM VILLAGE

*Come to Lymm,
we've always got
space for you!*



Thelwall Upholstery

FOR THE MOST COMPETITIVE RATES IN THE AREA

49 Knutsford Road, Grappenhall WA4 2NR
Call Sean on: 01925 604770 or mobile: 07799 228080
www.upholsterywarrington.co.uk

For all your upholstery needs

SPECIALISTS IN:

- Re-filling Cushions • Re-springing • Full Re-upholster
- Dining Furniture • Headboards

A wide range of sample books to choose from
All at competitive rates

PHONE FOR YOUR FREE ESTIMATES



Thinking about building work on your house?

Whether for an extension, loft conversion or structural alterations, we offer design advice, and can submit Planning and Building Regulations applications on your behalf, including producing drawings and other details suitable for obtaining quotes from builders.

Please phone for a no-obligation consultation
07831 877699 | 01925 365098 | 07786 431062

Jones & Wathen
Designers · Planning Agents

ChipsAway

Scratches and scuffs won't dent your pocket

Quality, professional mobile car paintwork repairs at a fraction of traditional body shop costs.

✓ Bumper scuffs



✓ Paintwork scratches



✓ Minor dents



Call or email Mark now to arrange your free estimate

07445029415 / 0800 0287878 mark.chorlton@chipsaway.co.uk



www.chipsaway.co.uk

REPAIRS FULLY
GUARANTEED

Old age is no place for Sissies

by Suzette Pulman

"Old age is no place for sissies." The Bette Davis quote that all too many of us can identify with.

The later years can bring a wonderful plethora of general aches, pains and mobility symptoms that can make life that little bit more challenging. Musculoskeletal conditions such as joint pain and osteoarthritis, as well as problems with the feet are extremely painful, common and can hamper movement and wellbeing. But it certainly doesn't mean you can't do anything about it.

At Lymm Osteopathic Practice, they have made the process of finding treatment for the health requirements of the older population that little bit easier. With a wide range of health therapies such as Osteopathy, Acupuncture and Podiatry all under one roof, the practice has successfully developed a multidisciplinary formula for pursuing optimum health and pain-free mobility.

They have also recognised that very often, one discipline can work even more effectively when used alongside other approaches. Practitioners are carefully selected, fully qualified and highly experienced. Each therapist has completed a high standard of professional training and is appropriately registered.

All therapies work with, rather

than replace orthodox forms of treatment and offer the precious advantage of time – patients are given more of it whilst practitioners are more prepared to listen in detail and so reach the root of the problem.

To find out about the full range of therapies offered at Lymm Osteopathic Practice, you can call on 01925 752264 or take a look at the website at www.lymmosteopathicpractice.co.uk.

The practitioners are more than happy to see you or even talk on the phone to discuss your specific case and help find the health solution that's perfect for you.



Fund-raising lunch raises £5,500 for St Rocco's Hospice

A LUNCH in aid of St Rocco's at Laskey Farm has raised £5,500 for the hospice.

The event was organised by Howard and Wendy Platt in memory of Bill Spencer, a former director at Lockers in Warrington, who was treated at the hospice.

Guests enjoyed champagne and canapés and music from Lymm singer Lucy Barlow and all donations will go to help provide care with life limiting illnesses and supporting their families.

Bill's wife, Maggie, 64, who lives in Stockton Heath, said: "We are so pleased to have been able to raise such a fantastic amount for St Rocco's and would like to thank everyone for their generous donations.

"We're also so grateful to Howard and Wendy for organising the event and letting us use their garden and the kindness they have showed us as a family since losing Bill.

"The care St Rocco's gave Bill when he was ill will never be forgotten, and we wanted to give something back to recognise this."

Howard, who worked with Bill added: "The turnout and the generosity shown were a clear reflection of the high regard everyone attending had both for Bill Spencer and for the great work done by St Rocco's."



Howard and Wendy Platt with Bill's wife Maggie and daughter Rachel.

Rugby club development plan gets the go-ahead

PLANNING chiefs have given the go-ahead for ambitious re-development plans at Lymm Rugby Club – despite objections from nearby residents.

Members of Warrington Borough Council's development management committee approved proposals for a new purpose-built clubhouse, multi-sports facility, and caretakers flat, along with four tennis courts, a 3G rugby pitch, 10 new dwellings and the conversion of the existing clubhouse into four apartments.

It was the second time the committee had approved the

proposals because of slight amendments to the scheme.

Fifteen letters of objection have been received from residents of Manor Road and Crouchley Lane – in particular to parking issues and road safety issues arising from parking on Crouchley Lane, which, they say, have been the cause of accidents. There were also fears of late night noise arising from alcohol-related and anti-social

activity.

Lymm Parish Council, while acknowledging that the club needed improved facilities, objected on the grounds the development was in the Green Belt.

But planning officers recommended the scheme be approved – and the committee unanimously agreed.

After the meeting, Lymm councillor Sheila Woodyatt said: "It is a wonderful scheme and will provide a first rate facility for the village."

A spokesman for the rugby club said: "This is a great step on the road to the achievement of our ambitious plans for both our club and our community.

"The hard work now starts – but at least we are doing it from a solid foundation and with a clear plan which, hopefully will make it easier to bring people – club members and more – along with us. We have to raise an awful lot of money to complete this – but we are confident that we will get there."

Council's tribute to former chairman

LYMM Parish Council has agreed to place a plaque on one of the benches at Lymm Cross marking the contribution made to public life by the late Neville Woodyatt, who died on May 18.

A former local councillor, Mr Woodyatt, aged 87, had lived in Lymm since he was four and attended Lymm Grammar School before going on to study physics at Manchester University.

He served as a parish councillor for 28 years and was chairman in 1991.

Mr Woodyatt played soccer for

Lymm Grammar School Old Boys and cricket for Lymm Oughttrington Park, where he captained the 2nd XI and eventually became club president, a position he still held at the time of his death.

He was also a member of Lymm Golf Club for 35 years.

As an active member of Lymm Grammar School Old Students Association he met his wife, Cllr Sheila Woodyatt, at the opening of the school swimming pool in 1957.

He also served as a school governor at two schools in Warrington.



Laura – the runaway bride!

IT was a double celebration for Laura Stevenson, a member of Lymm Runners.

She took part in her 50th Park Run – on her Wedding Day!

Laura, a member of the running club for four years, chose to mark both occasions at the Warrington Park Run, escorted by more than 40 of her clubmates.

For her pre nuptial 50th run Laura chose a knee length white satin gown with lace detail at the neck and a giant bow feature at the waist.

Her accessories included a white veil, a small bouquet of red and blue silk flowers, three helium balloons – and, of course, a pair of running shoes!

Her Lymm Runner entourage (plus two children and a dog) wore their distinctive green running vests with a choice of either shorts or lycra leggings.

Laura was cheered and

applauded around the 5km course in Victoria Park by spectators and the wonderful Warrington Park Run Volunteers and crossed the finishing line through a Lymm Runners "Guard of Honour".

She said: "It absolutely was the 'Best Parkrun Ever' and I am lucky to have such amazing friends and be part of such a great running Club."

After the traditional group photo taken on the playing fields, the happy bride departed to prepare for the nuptials proper at Bowdon.

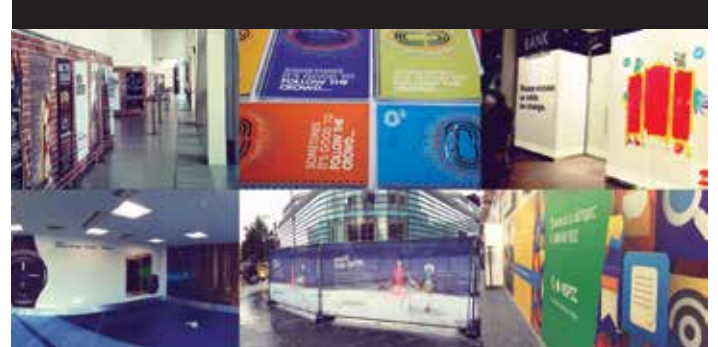
Warrington Park Run takes place every Saturday at Victoria Park at 9am. More details can be found at www.parkrun.org.uk/warrington/



twentyfour 01925 240247
seven design & print ltd WWW.247PRINT.NET



Traditional Values
 MODERN IDEAS



Established 1878
John Burrows & Sons
 Independent Family
Funeral Directors
 MG & J Tandy
 16 Higher Lane, Lymm, WA13 0AP
 Chapel of Rest, Mill Lane, Lymm, WA13 9SE
 Tel: (01925) 752501
 Golden Charter
 www.johnburrowsandsons.co.uk

CLASSIFIED

FREEPHONE 0800 955 5247 to advertise

ACCOUNTANCY & BOOKKEEPING

BOOKKEEPER/ACCOUNTANT. Licensed for maintaining financial records, VAT Returns, Payroll Service, Management Accounts, SAGE Software Consultancy. **Contact: 07815 617914.** (01/17)

BUILDING SERVICES

BRICKLAYER AVAILABLE for garden walls, pointing etc. **Tel: 01925 755441 Mobile: 07966 491624** (01/17)

CARPETS, CURTAINS & INTERIORS

BLINDS, CURTAINS, CARPETS, plantation shutters, paint, wallpaper. All popular brands available, including Harlequin, PT, Little Green Paint Co, F&B, Cormar and Victoria Carpets. **Xross Interiors, 27 The Cross, Lymm Tel 01925 758298 or email hello@xrossinteriors.co.uk** (09/16)

Paul Bains Flooring Solutions Ltd



- CARPETS - WOOD - LAMINATES -
- DECORATIVE VINYL FLOORING -
- FREE CHOOSE AT HOME SERVICE -

101 Bucklow Gardens, Lymm WA13 9RN
T: 01925 748549 M: 07973 376224
E: paulbainsflooring@msn.com
www.paulbainsflooringsolutions.co.uk (06/18)

CARPET CLEANING

A1 STAINBUSTERS. A Warrington company cleaning Carpets, Upholstery (Leather + Fabric) and Curtains in situ. FREE quotes for domestic and commercial. **Call John on 01925 852088 or 07765314080** (01/17)

SIMPLY THE BEST CARPET CLEAN YOU will ever have. Cleaners UK Ltd. Est 28 yrs. Have your carpets & sofas beautifully deep cleaned leaving them fresh smelling & colour restored. Latest & best methods. Dry/steam. Leather cleaning, oriental rug specialist. Professional, reliable & affordable. **For more info call Neil Riley on 01925 264989 / 07831 336060 www.cleaners-uk.net** (01/18)

CLEANING SERVICES

arleys angels

- Spring Clean Specialists
- Presenting your home for sale
- Moving house
- After building work cleans

01925 266834
... because you're worth it! (01/17)

SIMPLY THE BEST CARPET CLEAN YOU will ever have. Cleaners UK Ltd. Est 28 yrs. Have your carpets & sofas beautifully deep cleaned leaving them fresh smelling & colour restored. Latest & best methods. Dry/steam. Leather cleaning, oriental rugs specialist. Professional, reliable & affordable. **For more info call Neil Riley on 01925 264989/ 07831 336060 www.cleaners-uk.net** (01/18)

ELECTRICAL CONTRACTOR

TRUST PROPERTY ELECTRICAL SERVICES. NICEIC Part P Approved Contractor. All Electrical work undertaken. Inspection & Testing & PAT Testing. All work certified & guaranteed. **Call Tim on 07754409906 or 01925 601055** (09/17)

EQUESTRIAN SUPPLIES & ANIMAL FEEDS

STABLES SADDLERY. Est 1964. Good stock of all equestrian supplies and animal feeds. Also storage available for trailers, caravans and household goods etc. **Tel: Barbara Williams on Lymm 752762.** (012/17)

FARMING / FIELD SERVICES

NEIL WORTH CONTRACTING FOR hedge trimming & paddock/small field work. Also septic Tank emptying. Scrubland clearance. Specialist in Japanese knotweed spraying. **Tel:07973 242808. www.nworthcontracting.co.uk** (010/17)

GARDENING SERVICES

Beechwood Industries Ltd **LOCALLY BASED**

- Garden Maintenance
- Lawn Care
- Landscape Design
- Construction
- Paving
- Tree Surgery
- Free Assessment
- Free Consultation

Contact us on:
07749 253 308
01925 860544
www.beechwoodindustries.co.uk (01/17)

J C SLAVIN
Landscapes & Garden Maintenance

Landscape Design • Garden Landscaping
• Plant Hire • Flagging • Fencing • Tree Hedge Pruning

01925 756 839 / 0161 775 0297
Mob: 07737 655 211
www.jcslavin.co.uk (07/18)

JP LANDSCAPES

Resin - Block Paving - Tarmac
Slabbing - Driveways
Patios - Gravelling
Brickwork - Steps
Fencing - Astro turf (Supplied & Fitted)
Power washing - Turfing
Driveway Repairs

For a FREE no obligation quote please call
0800 858 9961 or 01925 393 188
or visit john@jp.landscapes56@gmail.com
07818 385 384 / jplandscapes56@gmail.com

Wale Avenue, Warrington, WA2 8AY (010/17)

HANDYMAN

Handyman Services
Home, Office & Garden

Internal and External Painting • UPVC Window and Door Repair and Replacement
Mechanism/Lock Changes • Soffits and Fascias
Gutter Cleaning, Repair and Replacement
Flagging • Fencing • Patios • Jet Washing
All Garden Work • All DIY

Call today for a FREE quote

Tel Neil: 01925 757905 (Lymm Based)
Mob: 07813 201850
handymanserviceslymm@hotmail.co.uk (010/17)

HOME SERVICES

ATLAS
Your friendly local independent pest controllers

SUMMER SPECIALS:

WASP CONTROL **£35** INVASIVE BEE CONTROL **£55**

Affordable, professional, guaranteed service. Fully insured, fixed prices - no surprises once on site! Discrete vehicles, no embarrassing signs
07999 487 925 / 01925 445 222
www.atlas4u.co.uk (05/18)

MORTGAGES

INDEPENDENT MORTGAGE ADVICE. For local, impartial and professional advice on all aspects of mortgages contact Darren Simpson at Amathus Financial Services on **07708 975122.** (012/17)

OPTICIANS

ADCOTT OPTICIANS. State of the Art opticians in the heart of Lymm Village. Comprehensive sight tests and a wide choice of spectacles tailored to you, whatever your budget. **01925 757075** (01/17)

PAINTING & DECORATING

BENJAMINS PAINTERS AND Decorators. 20 years professional experience in commercial and domestic decorating, wallpapering, coving, interior and exterior work. **Telephone 07837 452514 or 01925 755198.** (012/17)

PAYROLL

WHY TRY TO BE A PAYE EXPERT? Watkinson Black can provide a cost effective payroll service, releasing you to concentrate on your business. **For further details please phone: 01925 413210 or e-mail: info@warringtonaccountants.co.uk** (01/17)

PLUMBING

CL PLUMBING AND GAS SERVICES Local honest plumber covering all aspects of plumbing and gas works. Boilers and central heating installed and repaired. Bathroom suites supplied and fitted. Cookers and fires fitted. Landlord gas safety checks. All plumbing emergencies - 24 hour call out. No job too small, OAP Discount rates. **Tel Craig 01925 819692 07851 405466 www.warringtonplumbingservices.co.uk** (02/18)

Gas Safe Registered Engineer

AndyGas of Lymm, specialist in: Boiler upgrades, servicing, repairs to all domestic heating and gas appliances. For a professional service call Andy **07753 838129 or 01925 753712** (02/18)

RE-UPHOLSTERY

Orchard Soft Furnishings

RE-UPHOLSTERY
CURTAINS • BLINDS

FREE MEASURING & FITTING

TEL:(01925) 756388
www.orchardsoftfurnishings.co.uk (01/17)

TAXI / PRIVATE HIRE

Horn's

Airport Transfer & Taxi Specialists
CALL MARTYN: 01925 751761
MOBILE: 07881 786250 (09/17)

TUITION

JustEnglish
SPECIALIST ENGLISH TUITION

Secure success in English

Call Wendy **07863 888 599**
www.justenglishlymm.co.uk (010/17)

WINDOWS & GLAZING

LYMM WINDOWS & CONSERVATORIES LTD. BY NEIL COPELAND. Specialist in uPVC double glazing windows, doors, porches, conservatories, also fascias and guttering. FENSA registered. All work guaranteed. **Tel: 01925 756138 / 07961 361550.** (02/18)

MOTORING SERVICES

PARKVIEW CAR SALES

We buy and sell **QUALITY CARS**
Best price paid

Telephone Peter on **01925 575737 / 07957 545479**

23 Padgate Lane
Padgate, Warrington
Cheshire, WA1 3RS (01/17)

Lymm Life

offers a cost effective local **LEAFLET DELIVERY** service at competitive prices. We can also design and print leaflets with our in-house design team.

Call us now on
0800 955 5247

Banner & Co

Independent Residential Sales and Letting Agent



FARMERS COURT, LYMM

TEN LUXURY PROPERTIES



House type A



House type B



HIGH QUALITY SIEMATIC KITCHENS, CORIAN WORKTOPS, NEFF APPLIANCES, PORCELANOSA SANITARY WARE, AMTICO FLOORING

01925 753636 www.bannerandco.com

Please note that if you have already instructed another agent, we would advise you to check any agreement you may have to ensure you are not liable for more than one commission by instructing us as your agent