

# Culcheth *Life*

**FREE EVERY MONTH**

Issue: 175  
October 2017

**Dootsons**  
SOLICITORS

See main ad  
Page 10

23 Jackson Avenue  
Culcheth

**0845 330 5700**

CULCHETH • CROFT • GLAZEBURY • GLAZEBROOK • LOWTON • WINWICK AND SURROUNDING AREAS

**We must protect  
our Green Belt**

Page 3



**Courtyard**

01925 767000

[www.courtyardhomes.co.uk](http://www.courtyardhomes.co.uk)

**All the latest news: [www.culchethlife.com](http://www.culchethlife.com)**



**Editor**  
Gary Skentelbery

**Production**  
Paul Walker

**Advertising**  
James Balme

**Freephone**  
0800 955 5247

**Editorial**  
01925 623633

**Email**  
info@culchethlife.com

**Websites**  
www.culchethlife.com  
www.frodshamlife.co.uk  
www.lymmlife.co.uk  
www.warrington-worldwide.co.uk  
www.warrington.tv

**Address**  
New Media Centre  
Old Road Warrington  
WA4 1AT

*Culcheth Life is published monthly by Orbit News Ltd.*

*The contents of this magazine are fully protected by copyright and nothing may be reprinted or reproduced without prior permission of the publishers.*

*The publishers are not liable for any statement made or opinion expressed by third parties in this publication.*

*Printed by TwentyFourSeven*

# Editor's Comment



**IT is refreshing to see local councillors from opposing parties joining forces in a bid to prevent our local green belt disappearing to make way for more new homes under Warrington Borough Council's Local Plan Preferred Development Option.**

While there have been rumblings in the South of the borough over proposed development on Green Belt we were starting to worry things were a little quite in Culcheth and surrounding areas.

So it was with some relief when we heard that parish councils were joining forces to come up with a battle plan in a bid to stop this merciless onslaught on what remains of our Green Belt.

It is a shame that it takes something of this magnitude to force our locally elected representatives to work together in a positive manner and hopefully this will set the tone for the future.

Here at Culcheth Life and our other local titles, we have always believed that party politics should be well and truly put to bed once the elections are over and that those who have been chosen by

the people, should all roll up their sleeves and work together for the benefit of the community.

Too much energy is wasted on party politics.

So let's all work together to ensure we can protect what is left of our Green Belt before it is too late.

We still have some breath taking scenery left in our borough – but it is fast diminishing – and of course there is also the huge problem of the infrastructure to service all these new homes!

Our highways are already working to capacity and the thought of 20,000 new homes across Warrington as part of the Local plan is mind boggling to say the least!

## Christmas market to be held again

CULCHETH is to again stage a Christmas Market – following the success of the first event held last year.

It will take place on Saturday, November 25 between 10am and 5pm and will incorporate the switch-on of the village's Christmas Lights at 4.30pm.

Culcheth and Glazebury Parish Council will be organising the event which was launched as a successor to the former Victorian Day.

Shopkeepers and traders are being sought to take part in the event and anyone interested should contact the parish clerk, Mike Durrington, on 01925 733619 or email Culcheth.clerk@btinternet.com



**CAMPBELL CROSSLEY & DAVIS**  
Licensed Insolvency Practitioners

Constructive solutions to debt  
for companies and individuals.



Ian Williamson  
M: 07703 529212  
Roger White  
M: 07946 820299

www.campbell-crossley-davis.co.uk



## Making it easier for your business to be successful

### We care about you

You're a hard working entrepreneur and you need an accountant who does more than just tick the boxes.

### You need a professional

Every one of our highly competent, skilful and professional people is here to help you.

### You're our number one priority

You're more than just someone we prepare accounts for, the success of your business means everything to us.

Are you looking to make your business life easier?  
Speak to one of our experts:

**01925 761 600**

or visit us at: **stylesandco.co.uk**

**styles** and co  
chartered accountants

**culcheth tyres**  
and autocentre

**01925 766380 / 766987**

Servicing, Engine Diagnostics, MOT Preparation & Presentation

Your Local Autocare Centre

**ANY MAKE, ANY SIZE, ANY VEHICLE**

**F  
R  
E  
E**

**Brake Safety Checks**

**Tyre Pressure Check & Inflation**

**Wheel/Alignment Checks**

**F  
R  
E  
E**

Unit 1D Taylor Business Park, Warrington Road, Risley, WA3 6BL



Call us on: **01942 607250**

www.elbfireplaces.co.uk

70 Twist Lane, Leigh, Lancashire WN7 4DP

Fire Surrounds, Stoves, Gas & Electric Fires



Established  
30 YEARS

• No need to change your carpet

• made to measure fireplaces

• Over 75 displays over 2 floors

• Live wood burning stove on display

**Marble Fireplace & Fire Fitted £995**

Is your conservatory too cold to use in Winter?

Why not install a stove?



# 'We must protect our Green Belt' say councillors

**THE Green Belt should be sacrosanct – with no housing built on it as long there is other land available.**

This was the view of parish councillors from Culcheth, Croft and Winwick at a special meeting to consider Warrington Borough Council's Local Plan Preferred Development Option, which proposes building thousands of homes in the Green Belt.

As a result, it was agreed that the parish councils should make a joint response to the borough council in addition to individual responses from Culcheth and Glazebury, Croft and Winwick.

The borough council's proposals would involve 300 houses on Green Belt land at Culcheth, 50 at Glazebury, 60 at Croft, 90 at Winwick and 40 at Hollins Green.

But Cllr Keith Bland – a member of both Culcheth and Glazebury and Croft parish councils, said: "The Green Belt should be sacrosanct."

"No houses should be built on Green Belt land because the number of houses the borough council say are needed can be provided without touching the Green Belt."

"The trouble is, developers are also making submissions and most of them involve the Green Belt."

"They are proposing more than 200 hectares of land at Culcheth - including two major sites of 111 hectares and 96 hectares - 129 at Croft and a number of smaller sites at Winwick – and they reckon they can build 30 houses per hectare."

"If building on anything like this scale took place it would completely transform all three villages. In fact, they wouldn't be villages any more."

"The infrastructure is not there to support this kind of development – Croft hasn't got any shops at all."

"The worrying thing is that these developers have got money – they can afford to appeal against decisions and if they don't get their own way at first they tend to do so eventually."

"There are large areas of open land at Culcheth and Croft which will be at risk."

"We only have until September 29 to get our responses in and it

is important that we do – not just the parish councils but individual residents as well. We must protect our Green Belt."



## A chance to learn how to age well

PEOPLE aged over 50 are being given a chance to learn how to age well at weekly sessions at Glazebury Methodist Church.

The sessions, on Thursdays from 10am to 12 noon, started on September 21 and continue for five weeks.

Organised by the borough council's neighbourhood team, they are open to people over 50 years of age who will be given the opportunity to learn new skills, get advice and information about healthy lifestyles.

They can also receive advice on being safe and secure at home and avoiding scams, learning how to boost their mood and how to get in touch with local mental health support services.

Advice will also be provided around finding cheaper gas and electricity providers, Dementia Friends awareness training and information from Warrington Disability Partnership about aids and support to help you as you get older.

There will also be an introduction to low intensity chair-based exercise by LiveWire and, of course, time for refreshments and a chat!

Anyone who wants to secure a place at the sessions should call 01925 241360 or email eastneighbourhoods@warrington.gov.uk



**HUNTER HEALEY**  
CHARTERED ACCOUNTANTS

- Professional, approachable, affordable
- Accounts preparation & tax returns for individuals & companies
- Bookkeeping, payroll & vat
- Capital Gains, Estate Planning & Probate Work
- Business start up advice
- First meeting free of charge

**Call Nigel Healey now on 01925 767222**

Abacus House, 450 Warrington Road, Culcheth WA3 5QX

[www.hunterhealey.co.uk](http://www.hunterhealey.co.uk)



# China Rose Restaurant

## The Finest Chinese Cuisine

### SPECIAL OFFER

**£10 OFF DINING IN • £5 OFF TAKE AWAY**

Terms and conditions apply.

Voucher not to be used in conjunction with any other offer.

Minimum spend £35. One Voucher per transaction. Voucher expires 31/10/17

Take Aways Available • Dining over two floors

**Now Under New Management**

Opening Hours: Monday - Thursday 5pm-10.30pm

Friday - Saturday 5pm-12pm Sunday 4pm-9.30pm

**CHRISTMAS BOOKINGS NOW BEING TAKEN**



**Telephone: 01925 765 806 | 23 Common Lane, Culcheth, WA3 4EW**

All major Credit/Debit cards accepted





# 'Throw yourself in at the deep end - and have fun'

**FORMER Culcheth High School pupil Chelsea Carmichael is returning to her old school for three days from October 4-6 - leading a jazz group known as the NYJO Messenger.**

The 24-year-old tenor saxophonist's mission is part of an outreach tour organised by the National Youth Jazz Orchestra to give music students an insight into the possibilities of making jazz a career.

Chelsea - now a freelance musician in London - started her musical education at Culcheth High, before moving on to Trinity Conservatoire of Music and Dance in London.

Ahead of her tour she took part

in a question and answer session with music education body ABRSM (Associated Board of the Royal Schools of Music) and published on their website.

This is an extract from that session.

Can you tell us about your background as a player - how did it all begin for you?

I had friends at school who started playing instruments, and as a typical 10-year-old I didn't want to miss out. After a failed attempt

at persuading my dad to let me play the violin, I started playing classical piano and later picked up the saxophone aged 12. It quickly became my first instrument. When I finished the graded exams, I had to make a decision about what came next - my teacher at the time was very much a jazz player, so I started to learn jazz from there. I got involved in local big bands, and began to investigate the possibility of making a career out of music.

What challenges did you face when you were learning?

Looking back, where I was in Warrington there wasn't as much opportunity for developing musicians compared to London. Great organisations like NYJO or Tomorrows Warriors, and the various other music services, residencies and projects/workshops for young people all over London weren't so accessible in Warrington, or were few and far between. I was lucky to get involved with Wigan Youth Jazz Orchestra which really opened my eyes to what playing an instrument

can involve. However, things are changing - there are some really great opportunities for developing musicians now up North and I'm glad to see young musicians benefiting from that.

For the rest of the interview check out the ABRSM website [www.abrsm.org](http://www.abrsm.org)





## Culcheth Community Primary School

Where Learning is Fun!

### OPEN DAYS

**October 18th and November 15th:  
2pm and 6pm**

Culcheth Community Primary School is a warm, welcoming, vibrant school that provides a first class education and a wide range of extra-curricular opportunities for all children. Wrap around care is provided by Culcheth Day Nursery, which shares the same site.

Individual visits to school warmly welcomed - please call in or phone to make an appointment

## 01925 764312

Further information can be found on our website [www.culchethprimary.co.uk](http://www.culchethprimary.co.uk)

*" 'A caring environment in which pupils flourish', parents are 'overwhelmingly supportive of the school' and are 'delighted with the quality of education that their children are receiving' "*

Ofsted June 2017

**Our School Values**

- Respect
- Teamwork
- Honesty and trust
- Friendship and kindness
- Creativity and courage
- Happiness, fun and enjoyment



## Luxury homes plan thrown out

A PLAN to build 16 luxury homes on the site of a commercial vehicle depot at Culcheth has been thrown out by planning chiefs.

Members of the borough council's development management committee refused consent for the development on the site of the Trucks-2-Go site in Warrington Road at Mee Brow - despite officers recommending the scheme be approved.

Concerns about traffic and parking were the main reasons councillors opposed the scheme, put forward by house builders Elan Homes.

The committee was told the scheme would involve demolition of existing buildings on the site.

Part of the site was undeveloped and in the Green Belt, but this would remain as an amenity area. A public footpath would have to be diverted.

Culcheth and Glazebury Parish Council had lodged objections on traffic parking grounds and also questioned whether a development of four and five-bedroomed houses was appropriate for the village.

They pointed out that traffic is extremely heavy on Warrington Road.

Planning officers said the proposals were appropriate in a Green Belt area. The developer had agreed to pay £320,812 towards the cost of affordable housing elsewhere and also £48,513 towards education enhancements at Culcheth High School.





**PRIESTLEY COLLEGE**  
WARRINGTON

01925 633591  
[www.priestley.ac.uk](http://www.priestley.ac.uk)

## OPEN EVENTS

WED 4 OCT	5:30pm - 8:00pm
THU 5 OCT	5:30pm - 8:00pm
SAT 14 OCT	10:30am - 12:30pm
WED 8 NOV	5:30pm - 8:00pm

for ENROLMENT SEPT 2018






# Unit To Let

## Greenwood Court

The office is a mid-terrace single storey property with parking to the front of the building for 2-3 cars and unlimited parking spaces on the main car park.

The offices are of modern construction standards; CAT 2 lighting, double glazing and air conditioning and heating. CAT 5 cabling has already been fitted throughout.

This recently converted 1000 Sq Ft. office and 750 sq ft warehouse comprises of a canteen area, WC and a meeting room, all done to a modern standard.



1,750 ft<sup>2</sup>

### Property characteristics:

- High Speed Internet available with free connection
- CAT 5 cabling throughout office
- 3 compartment trunking throughout
- Stylish, contemporary interior design
- Located close to M6, M62 & A580
- Quiet, rural location
- Located on a Family Managed Business Park with very high occupancy rates (98%)
- Ample free parking included
- Air conditioned office
- Kitchen/Canteen area
- Beautiful landscaped areas
- Close to local amenities

**01925 763851**

**TaylorBusinessPark**

# LOSING TENANTS TO SLOW INTERNET?

## Rural & Commercial landlord specialist



**CHESHIRE  
TELECOM**

# Call now on 01925 640640

[www.cheshiretelecom.co.uk](http://www.cheshiretelecom.co.uk)



# Residents' fury after builder wins housing appeal

**ANGRY residents have reacted with fury to a planning inspector's decision to allow a controversial housing development to go ahead at Culcheth.**

It was only in February that Warrington planning chiefs threw out a scheme for nine houses off tree-lined Culcheth Hall Drive.

But developers Evoke Homes appealed – and the inspector who heard the appeal has ruled in their favour.

Nearby resident Janet Evans, one of a number who opposed the scheme, said: "This will lead to absolute hell in Culcheth Hall Drive. "Everyone is annoyed about this

– it is devastating news.

"Everyone nearby will have the quality of their lives diminished as a result of a decision made by someone who does not live in the area and has no interest in our community."

She said residents would be vigilant – keeping a close eye on the development when it started to make sure the developer observed all the conditions that had been attached to the planning approval.

Gwyn Clark, the inspector who heard the appeal, said overall he considered the development had been sensitively designed to sit among the existing landscaping.

Little harm would be caused to the character and appearance of the area.

The potential impact on wildlife could be mitigated through conditions and a satisfactory draining scheme had been designed to minimise the impact on existing trees.

One significant tree would be lost, but there would be adequate replacement planting.

A number of previous applications on the site had been turned down including one which was almost identical and was thrown out on appeal.

The development will be accessed from Culcheth Hall Drive – despite objectors saying they would have supported the scheme if it involved fewer houses and was accessed from both Culcheth Hall Drive and Withington Avenue.

Culcheth and Glazebury Parish Council and local borough councillors had opposed the scheme.

## Beer festival proves to be a big hit again

THE 7th Annual Culcheth Beer Festival was held at Culcheth Sports club recently and once again proved to be a great success.

Organised by the Rotarians of Newton & District Jubilee, main sponsors Hunter Healey Chartered Accountants were in high profile attendance on the Friday with the more attractive staff members assisting the Rotarians behind the bar and Nigel Healey and friends once again forming the increasingly popular Hunter Healey Beer Band.

Senior partner Nigel said: "It's great as a local business to be able to support this popular local event and humbling that the quality musicians in the band give their time free of charge in support of the excellent work of the rotary club."



**Glazebury C of E (Aided) Primary School and Nursery**  
Growing together at the heart of God's community

**Glazebury CE Primary School and Nursery**

We would like to invite YOU to our 'Open Week' for our Reception class 2018. Also available are places for our Nursery provision for 3 & 4 year olds, with teacher led 2 year old provision to be launched in October 2017.

Week commencing 30th October 2017 to the 3rd November 2017.

*Growing together at the heart of God's community.*

You are warmly welcomed to come and view our fantastic environment, where provision is led by an experienced and fully qualified teacher.

**We can offer:**

- Flexible days – hours
- Mornings, afternoons or full days
- Options from 7.30am to 6.00pm
- 15 hours, 30 hours funded places
- Acceptance of childcare vouchers

**Glazebury CE Primary School**

"This is a good school." Ofsted 2015.

"Outstanding Christian ethos" SIAMs 2015

"Children make outstanding progress"

We are in the top 5% nationally for Reading, Writing and Math KS2 SATS results 2016.

Telephone: Mrs Holcroft on 01925 763234 or email: Glazebury\_primary@warrington.gov.uk to make an appointment.

**Trident Industrial Estate**  
Warrington

**ST.MODWEN**

**SECURE STORAGE**

**SECURE STORAGE UNITS**

24 hour access, competitive rents and flexible terms

Trident Industrial Estate, Birchwood, Warrington, WA3 6AX

- 24 hour access
- All inclusive rents from approx £80 (Inc. VAT) per month
- Flexible licences with 1 months notice
- 22 units from approx. 100 to 500 sq ft
- Drive in units with electrically operated roller shutter doors
- 24 hour CCTV
- Electric lighting and sockets
- Drive in units available
- Flexibility to change unit size at short notice

**Eileen Bilton**  
PARTNERSHIP  
(01925) 444700  
www.eileen-bilton.com

**ST.MODWEN**  
01925 825950  
cmunro@stmodwen.co.uk





# BIRCHWOOD COLLEGE

*"INCLUSIVE" "HIGH QUALITY PROVISION"  
"ASPIRATIONAL" OFSTED 2016*

# OPEN EVENING

**THURSDAY 5 OCTOBER 6PM - 8PM**  
**PRESENTATION BY HEAD OF COLLEGE AT 6PM**

TEL: 01925 853500

[BIRCHWOODCOLLEGE.ORG](http://BIRCHWOODCOLLEGE.ORG)



# Life saving defibrillator now available 24/7 in Culcheth

**A life-saving defibrillator owned by the Scout Association has been installed outside the Scout Hut on Jackson Avenue in Culcheth.**

Although Culcheth has a number of these life saving devices this is the first which will be accessible to the general public at any time. Part

funded by Bents Garden & Home, it will supply help for the local community in emergency situations. Bents donated £600 towards

the external defibrillator cabinet which can be accessed by inserting a code given by the emergency services. The automated heart start device will talk people through what to do if someone suffers a cardiac arrest.

According to the British Heart Foundation website more than 30,000 out of hospital cardiac arrests occur in the UK each year with a less than 1 in 10 survival rate. It is proven that performing CPR can double the chance of survival.

Matthew Bent, Managing Director at Bents Garden & Home said: "We've had a defibrillator here at Bents for several years, which has been used on more than one occasion so we're very aware of the benefits such a piece of equipment can provide."

"Providing access to something similar in a public place, which can be accessed quickly in an emergency could help save more lives. We're delighted that we have been able to help with such a fantastic facility for our local community."

Scout committee member, Darron Rathbone, who has been responsible for co-ordinating the project said: "We'd like to say a big thank you to Bents for buying the first external defibrillator cabinet for Culcheth and also to Croft Engineering Services for strengthening the cabinet and J&K Electrical Contractors for fitting it. It has been a real community effort and one which we think will be of huge benefit for the people of Culcheth."

## WI's speaker was one of the first thalidomide victims

MEMBERS of Newchurch WI were treated to a memorable evening when their guest speaker was Ann Mills – one of the first victims of thalidomide.

She told the meeting she considers herself fortunate because her lower limbs were unaffected.

Ann told of her family's emigration to Nova Scotia, adventures in the snowy winters and her own education both in England and Canada. Her brother encouraged her to learn to drive in an adapted Mini, she went to university and even did back-packing in Europe.

This was after surgery as a child had given her more use of vestigial arms and fingers. She was able to learn painting, embroidery and other crafts and she brought some beautiful examples of her work. After marriage to Andrew and the birth of her daughter Christine she learned horse-riding at Croft and did this for 10 years with special reins.

When Christine was 12, Ann

was diagnosed with non-Hodgkins lymphoma. Christine's practical help at home and time at St Rocco's helped her to recover and her plan now is to train as a lay reader at Liverpool Cathedral.

She has always been active in thalidomide support groups. Above all she asks fellow-sufferers not to be bitter towards their mothers for taking the pill that damaged them. Her own parents were both doctors and her mother had no idea what thalidomide could do. Trudy MacDonald gave the vote of thanks and Shirley Boyfield and Christine Mills served tea. Then Ann judged the September competition (a decorated egg) and chose Aileen Paterson as winner, followed by Doreen Procter and Sylvia Brown.

The President's table flowers, given by Marjorie Pugh, were presented to Ann as an extra "Thank you" from Newchurch. The evening finished with a word quiz.



Warrington  
& Vale Royal  
College

# Open Days

16th October 5-7pm

16th November 5-7pm

Warrington Campus & Hartford Campus

FOR COURSES STARTING  
SEPTEMBER 2018

Formerly  
Warrington Collegiate  
& Mid Cheshire College

wvr.ac.uk







Vivark Care provides affordable products and quality services that can help make life a little easier for you or someone you know.

#### Legal Services



**Future  
planning**

Experienced solicitors providing services in Lasting Power of Attorney, Wills, Conveyancing and Probate.

#### Vivark Care Shop



**Over 14,000 products - shop online today!**

Competitively priced and suitable for all ages and abilities, including; bathing, kitchen, toileting and mobility aids, paediatric, personal and continence care.

**visit [www.vivarkcareshop.co.uk](http://www.vivarkcareshop.co.uk)**

#### Home Monitoring



**30 day  
free trial**

A discreet home monitoring system to help people live in their own homes for longer.

#### Epilepsy Solutions



**discount  
available**

Products that monitor movement and instantly alert connected carers upon the onset of symptoms.

#### Stairlifts



A range of hoists, both internal and external stair and home lifts. Available to rent or buy.

#### Vivark Lifeline



24 hour telecare that allows people to live more safely as help is only the press of a button away.

#### Funeral Plans



**£150  
discount**

Affordable and fully guaranteed Pre-paid funeral plans with Co-op, the UK's leading funeral provider.

Contact us today and let us help you. Dont forget to quote WW17!

**0151 290 7002    [info@vivarkcare.co.uk](mailto:info@vivarkcare.co.uk)    [vivarkcare.co.uk](http://vivarkcare.co.uk)**

Vivark Care, Lakeview, Kings Business Park, Prescot, Knowsley L34 1PJ





*There are moments in the lifetime of a business, where the opportunity fills you with both excitement and caution in equal measure. These are the times when only enthusiastic expertise will do.*

- Business or Share Sales and Purchases
- Company Matters
- Partnership Matters
- Agency, Distribution and Terms and Conditions
- Franchising
- Employment Issues
- Commercial Property Transactions
- Property Development
- Landlord and Tenant
- Agricultural Matters
- Environmental

**We provide a full service to our Commercial clients, advising and assisting them in dealing with many and varied business issues and queries that arise in business.**

**For further information please contact us.**

**Dootsons**  
SOLICITORS



**23 Jackson Avenue, Culcheth**

**01925 765212**

**Email: [comms@dootsons.co.uk](mailto:comms@dootsons.co.uk)**

**[www.dootsons.co.uk](http://www.dootsons.co.uk)**

**CULCHETH • LEIGH • NEWTON**

# Bents keeping busy

**BENTS Garden & Home at Glazebury is keeping busy with fund-raising starting with one of the waggiest events in their calendar - the RSPCA's Big Walkies sponsored dog walk.**

Dog lovers are invited to put their best paw forward and join the team from the Warrington, Halton and St Helens' branch of the RSPCA for a scenic 5k walk through Windy Bank Woods, located to the rear of Bents Garden & Home on Sunday September 24. Starting and ending at Bents' Pet Place, the event supports the fantastic work carried out by the nation's leading animal welfare charity.

Big Walkies is a fundraising event so participants are asked to raise as much money as they can via sponsorship. Participants can register in advance for a reduced fee at <https://rspcawhsbigwalkies.eventbrite.co.uk> or on the day at Bents. Further details for registering on the day can be found at [www.bents.co.uk/big-walkies-sponsored-walk/5572/](http://www.bents.co.uk/big-walkies-sponsored-walk/5572/).

The team from Bents' Fresh Approach Restaurant will also be hosting just one of the many events that will be taking place around the country as part of Macmillan's World's Biggest Coffee Morning on Friday, September 29, 8.30 – 11.30am.

There will be lots of entertainment going on throughout the morning with many opportunities to donate money including a raffle and silent auction featuring: a Bistro Set; a 4 ball golf day and an adult's bike, amongst many other great prizes. There will also be live entertainment

from Warrington BSL Choir (British Sign Language).

Once again Bents is keen to raise a considerable donation for the charity which provides much needed care and support for people living with cancer so hopes as many people as possible can join them for another enjoyable event.

In addition to Bents' charity events, there will also be an opportunity for customers to win something for themselves as the Centre celebrates the end of summer with an 80th Anniversary inspired event. The end of summer event is the latest seasonal surprise planned to commemorate the Centre's special milestone and will take place on Friday, September 22.

Continuing with the theme, Bents has once again planned 80 surprise envelopes for customers to choose from. Prizes contained within the envelopes range from an anniversary mug to an £80 gift voucher, and this time everyone is a winner! The End of Summer Giveaway will be located in Bents' newly refurbished gift department and will continue until all envelopes have been claimed.

That's almost all for September at Bents but not quite...as Bents' annual Autumn Fashion Show returns on Thursday, September 21 and a celebratory opening event for the new look gift department will take place between Wednesday 27th and Friday 29th between 5 – 8pm.

**simple solutions**  
Financial Management Ltd  
INVESTMENTS & PENSIONS

## INVESTMENTS

Our investment expertise will ensure that you have the most suitable investment to help you achieve your financial goals.

We use:

• Asset Allocation • Risk Profiling • Diversification • Correlation

## PENSIONS

Pensions have changed since the March 2014 budget and you now have a lot more options to consider

### TECHNOLOGY

Simple Solutions uses the latest technology to keep you updated, even when you are on the move or abroad, check out our website for more details.



The Base, Dallam Lane,  
Warrington, Cheshire  
WA2 7NG

**Tel: 01925 266628 Fax: 01925 267043**

**[www.simplesolutions.financial](http://www.simplesolutions.financial)** **@SimpSolSIFA**

Simple Solutions Financial Management Ltd is authorised & regulated by the FCA. The registered office is 1st Floor, 67 London Road Stockton Heath, Warrington WA4 6SG. Registered in England & Wales. The company Re No 6920858



# y with fund-raising



## The Gardening Guide



“Now is a good time to extend water gardens or construct stunning waterfalls”

Simon Bax,  
Plant Area Specialist

- This is an excellent time of year to construct paths, patios and terraces. Remember they will look best if they complement the materials used for the house
- The last mow of the year will probably take place this month
- Plant traditional favourites such as Wallflowers, Forget-me-nots and Polyanthus in prepared ground for a colourful spring show
- Clean and oil your garden tools for storage. An easy way to do this is put some oil and sand in a bucket and then slide them in and out of the sand

For events and online shopping  
visit [bents.co.uk](http://bents.co.uk)

GARDEN | HOME | LIFE | FOOD

80  
ANNIVERSARY

bents



### Christmas Menu

Now Available

Bookings now being taken for December.

Christmas Day only £49.95

For all bookings please email  
[bookings@theculchetharms.co.uk](mailto:bookings@theculchetharms.co.uk)

Est 2013  
**THE CULCHETH ARMS**  
Restaurant & Bar

1 Church Lane, Culcheth, Warrington WA3 5DL  
01925 764722 | [bookings@theculchetharms.co.uk](mailto:bookings@theculchetharms.co.uk)

## Join us for our Christmas Opening

11th October, from 2pm

Our trees are being  
*trimmed*, our recipes  
are being *perfected*,  
our decorations  
are being *created*,  
& our teams  
are being *selected*.



[bents.co.uk](http://bents.co.uk)

bents





# Open Evening

Thursday  
5th October 2017



Arrival and Registration

6.00pm

Headteacher Presentation

6.30pm and 7.00pm

Warrington Road, Culcheth, WA3 5HH

Phone: 01925 767587

[www.culchethhigh.co.uk](http://www.culchethhigh.co.uk)

➤ RESPECT  
➤ HONESTY  
➤ EXCELLENCE

## College celebrates 30 years!



**CARMEL College is celebrating its 30th anniversary. The college opened in September 1987 on the site of Mount Carmel Girls' school following the reorganisation of the local catholic high schools. Four years later in 1991, it also became the designated Catholic College for Warrington.**

In 1987 there were around 400 students enrolled at the college. As well as offering A Levels and vocational courses, a small number of students with moderate learning difficulties followed a Skills for Life course in the college's bespoke Foundation Learning department which was, and still is, a unique and very important part of the college.

Thirty years later and, as well as offering over 50 courses including a wide range of A Levels, BTECs and Foundation courses, you can also study for a degree at Carmel and there are now almost 2000 students! As well as links with several universities, Carmel has international links too – with a school in France for 25 years and for the last 3 years with a school in China. Alongside their studies, students are encouraged to take part in a range of enrichment activities and the opportunity to learn Mandarin is one of many options available.

To accommodate the increase in students over three decades, Carmel has continually expanded and improved its facilities and the

original Mount Carmel buildings have been replaced. Most recently, three new buildings were added at a cost of £23M, which house the arts, humanities, sciences as well as Student Services.

Student achievement at the college has grown quickly since 1987. Exam results have been consistently outstanding due to the progress students make, both academically and personally. During their time at Carmel, students are supported not only by their Subject Tutors, but through the Pastoral, Study Support and Careers Teams enabling them to leave college with all the skills they need to be successful in the future.

Principal Mike Hill added, "I feel extremely privileged to become only the third Principal to lead such a fantastic college. From day one, Carmel College has delivered an outstanding sixth form education to thousands of students from schools across Merseyside and Cheshire. We will continue to serve the community for hopefully another thirty years and enable even more young people to fulfil their dreams."



LYMM HIGH SCHOOL  
SIXTH FORM

OPEN EVENING

THURSDAY 9TH NOVEMBER 2017

5 PM - 8 PM

When our application process for  
September 2018 will open



[www.lymmhigh.org.uk](http://www.lymmhigh.org.uk)



# #inspiring minds #shaping futures

carmel  
college

## COME AND VISIT One of the TOP 10 Sixth Form Colleges in the Country\*

- Speak to subject tutors and students
- Principal's talks
- Pick up course leaflets and a prospectus
- Get info about transport, finance, careers, work experience, High Achievers' Programme
- Find out about our courses for young people with moderate learning difficulties and disabilities



## OPEN EVENTS 2017-18

Wed 18th Oct 2017  
6:00pm - 8:30pm

Thurs 9th Nov 2017  
6:00pm - 8:30pm

Sat 18th Nov 2017  
11:00am - 1:30pm

Tues 6th Feb 2018  
6:00pm - 8:30pm



APPLY ONLINE  
BY 23RD  
FEB 2018

Prescot Road, St Helens, Merseyside WA10 3AG  
Tel: 01744 452200 (Reception) 01744 452214 / 452212 (Admissions) Email: [info@carmel.ac.uk](mailto:info@carmel.ac.uk)

[www.carmel.ac.uk](http://www.carmel.ac.uk)



See our website / social media for results day news and photos





PRICES FROM ONLY  
**£1995**  
INCLUDING FITTING

It's your conservatory... only better!



**eco**hybrid  
ALL YEAR ROUND INSULATION

# KEEP YOUR COOL THIS SUMMER!

## Conservatory Roof Conversions

- 1 day installation
- Reduces rain noise
- Stops sun glare
- Stops furniture fading
- No fuss - no mess
- Save on heating bills
- Suits ALL conservatories
- Nationwide service

"We didn't use our conservatory because it was always either too hot or too cold. Now we spend time in there every day."  
Mr & Mrs Cameron



**4 SEASONS**  
CONSERVATORY ROOFS

PAY NOTHING  
FOR 12 MONTHS  
THEN TAKE  
**2 YEARS**  
INTEREST FREE CREDIT\*

Full bespoke conservatory &  
orangery design & build service



Large showroom - OPEN 7 DAYS A WEEK

Next generation sliding doors

**multi slide**  
SLIDE & FOLD DOORS

Open up a New World!

- Easy, smooth operation
- No unsightly hinges
- No restriction on which part of the door you open
- No wasted space



Call in or ring for free quotation



**your CHOICE**  
your home your choice

AS SEEN ON TV

**0800 169 48 22**  
[www.your-choice.uk.com](http://www.your-choice.uk.com)

**Your Choice**  
**Home Improvement Centre,**  
590 Manchester Old Road,  
Middleton, Manchester M24 4PW

OPEN: Mon-Fri 9am-5pm  
Sat & Sun 10am-2pm

\*Written details on request.  
Authorised and regulated by the Financial Conduct Authority



# 'Mixed economy' proposals to save library

**"MIXED economy" proposals are being explored as a means of saving Culcheth Library.**

The aim is to introduce new services to the building, attract new users and extend opening hours, while maintaining the traditional library offer.

This was revealed in the latest

report from the borough council's Libraries Working Group, which has been working over the last six months to explore a range of options to sustain, promote and develop library provision across

## Villagers' barn dance displayed 'togetherness'

VILLAGERS at Croft and from elsewhere in the area enjoyed a evening "Gingham style" when a barn dance was held at Croft Village Memorial Hall.

There was live music from band Maplewood, led by caller Graham Smith, dancing to rival anything on TV and delicious refreshments.

Chairman of the hall committee Peter McCartney said: "We really wanted to provide a lovely, inclusive community event. I was minded that our event was being held on the same night as the Manchester Arena re-opened, and the same sense of togetherness evident in Manchester was reflected in a small way at our own event too."

"We were also raising funds to help maintain our building and so investing in our sustainability as a community resource. That said, holding the event itself was the biggest positive – otherwise that sense of community that we

all strive for is just a nice thought, rather than reality."

The committee is now planning a "Twilight Market" for late November



the borough.

Professor Steven Broomhead, chief executive of the borough council and chairman of the Libraries Working Group, said: "We are moving forward with our efforts to sustain and develop the future of our libraries service, and the group is working really well together in exploring all avenues and opportunities."

"I'm very pleased that we now have a clear set of options laid out for the group to consider. It's a really important step forward in defining an achievable and sustainable strategy for libraries,

wellbeing and community learning in Warrington. The process so far has retained positive community energy and activity."

Since the library was threatened with closure last year, a working party of local councillors and residents has been working hard to keep the facility open in its current location in the centre of the village.

They have launched the "Friends of Culcheth Library" campaign to open up the campaign to the wider community and are exploring various imaginative options for increasing the use of the building.

### PART-TIME FINANCE ASSISTANT REQUIRED, LOWTON

We are a professional consultancy with an immediate vacancy for an experienced Finance Assistant. This is a standalone role which will involve preparing client invoices, managing the sales, purchase and nominal ledgers, preparing VAT returns, petty cash, bank reconciliations, managing credit control and preparing monthly management reports.

Experience with Sage Line 50 is essential and candidates must have a professional telephone manner, good attention to detail, and be able to work on their own initiative.

Flexible hours of 12-16 per week are available. Salary of £19,500 to £21,500 dependent upon experience.



To apply, please send your CV and covering letter to:

Employee Management Limited  
Suite 8, Stone Cross Place, Stone Cross Lane North,  
Lowton, Warrington WA3 2SH

Or email to [debbiek@employee-management.co.uk](mailto:debbiek@employee-management.co.uk)



## NOW AT LEIGH!

Carpet and bed showroom over 2 floors (chair lift available)

Looking for carpets?  
**NEW RANGE**

Local style 4+5m wide

**Only £11.99 m<sup>2</sup>**  
plus

- **FREE FITTING\***
- **FREE UNDERLAY\***
- **FREE DELIVERY\***
- Bleach cleanable
- 7 year wear warranty

Min 16m<sup>2</sup>\*, within 7miles\*  
hsl surcharge\*



Just one of our beds

**Bamboo divan 4'6"**

Bamboo 1000 Pocket

Latex top (helps keep you cooler). Luxury heavy knitted fabric (which contains 19%

bamboo in the yarn, which is good for absorbing moisture and eradicating odours). Heavy durable cotton quilted border.

**Was £959 now £479**

**FREE DELIVERY • FREE REMOVAL • FREE HEADBOARD  
FREE MATTRESS PROTECTOR • 10 YEAR GUARANTEE**

\* Within 7 miles, Divan Beds Only

If this isn't enough if you don't like your new bed you can change your mattress with in first 21 days (ask in store for full terms and conditions).

Divan beds over £299 only

4 Gas Street, Leigh, WN7 4PD Tel: 01942 665560 [www.local-carpets.com](http://www.local-carpets.com)

25-27 Orchard St, Warrington, WA1 2TE Tel: 01925 419423

[www.facebook.com/localcarpets1/](http://www.facebook.com/localcarpets1/)

**KEEP UP TO DATE WITH OUR GREAT OFFERS**







## Culcheth Karate Club

at Newchurch Parish Hall, next to Sainsbury's

**MONDAYS AND THURSDAYS**

5:30pm - Ages 4-7 years • 6:30pm - Ages 8-12 years

7:30pm - Ages 13+ years. Open School Holidays

**\*\*First Lesson Free\*\***

Tel: 01925 827376 Mob: 07808048488

Email: nwka@hotmail.co.uk

www.nwka.co.uk

Facebook: @northwestkarateacademy

Teaching students in Culcheth since 1984



Official Members  
IOC Recognised

## The Cherry Tree



**2 meals for £10 served all day Mon-Fri**

**£5 OFF YOUR FOOD BILL**

when you spend £20 during October 2017

**BOOK NOW FOR CHRISTMAS. MENUS FROM £10.49**

Visit [www.thecherrytreewarrington.co.uk](http://www.thecherrytreewarrington.co.uk) for more offers

35 Common Lane, Culcheth, Warrington. WA3 4EX

01925 762624 email: bun212199@mbplc.com

**twentyfour  
seven**  
design & print ltd

01925 240247

WWW.247PRINT.NET



**Traditional Values**  
MODERN IDEAS



## Hole in the wall raiders use JCB to steal cash machine



**HOLE in the wall raiders used a stolen JCB to steal a cash machine outside the Sainsbury's store at Culcheth, Warrington, during the early hours of Wednesday September 13.**

The incident occurred at around 2.30am when the JCB machine was driven onto the supermarket car park on Common Lane and then used it to rip the cash machine from the wall.

Officers attended the scene and found that unknown offenders had used a stolen JCB to demolish an exterior wall and remove an ATM machine. The offenders then transferred the machine into an unknown vehicle, or vehicles, before fleeing the scene.

Sergeant Alison Howarth said: "Investigations in relation to this incident are in the very early stages and we are pursuing a number of lines of enquiry, including CCTV and

forensics. We are also working to establishing if this incident is linked to incidents that have occurred in the local area.

"We've already spoken to a number of witnesses in relation to the incident and as part of the wider investigation. We are keen to hear from anyone who may have witnessed the incident or seen any suspicious that may inform our investigation at this time."

Anyone with any information in relation to the incident is asked to contact Cheshire Police on 101 quoting incident number 53 of 13/9/2017. Information can also be passed anonymously, via Crimestoppers, on 0800 555 111.



## Council seeks £5,000 refund after losing PCSO

CULCHETH and Glazebury Parish Council is to ask Cheshire Police for a refund of more than £5,000 of the £11,000 it pays to have a Police Community Support Officer in the village.

This is because the village has not had its own PCSO since April but has still been paying for one.

Culcheth previously had two PCSOs – one paid for by parish council. But this officer left in April and, as a result, there has been less of a police presence in the village.

The council has had a meeting with Cheshire Police and Crime Commission David Keane to discuss the situation – but Mr Keane was unable to give any guarantee that the second PCSO would be restored.

Councillors believe that since the second officer left there has been an increase in unruly behaviour by gangs of youths in the village centre.

Cllr Keith Bland said: "We have written a letter to the police requesting a refund of more than £5,000 and terminating our agreement to pay for a second PCSO."

"We are willing to pay the fee – but not if we are not getting the service. I personally am disappointed that we haven't got two PCSOs. But there has been an increase in anti-social behaviour by gangs of youths in the village."

"It is only a minority, but it is enough of a problem to make older people reluctant to go into the village of an evening."



# CULCHETH & GLAZEBURY PARISH COUNCIL NEWS

## Your Parish Councillors

### NEWCHURCH WARD



**Ben Alldred**  
ben.alldred2016  
@protonmail.com



**Jacqui Johnson**  
01925 763435



**Margaret Webber**  
01925 762617

### GLAZEBURY & MEE BROW WARD



**Anne Roberts**  
01925 763047



**Joan Grime**  
01925 763631

### CULCHETH WARD



**Peter Holmes**  
Pdholmes  
@gmail.com



**Keith Bland**  
01925 766641



**Sue Bland**  
01925 766641



**Valerie Allen**  
01925 767274



**Illeynne Hutchinson**  
01925 765131

## The Warrington Local Plan: Preferred Development Option

The consultation on the preferred option was extended to September 29th. During the consultation period, the Borough Council added further information to their website and clarified it, providing the background information to the Draft Local Plan, which, early next year, will identify actual sites for development and be followed by a further consultation. There will then be a Public Inquiry and the Inquiry Inspector will report back later in the year. It is very important for as many people as possible to take part in the consultation next year. It will be helpful to start looking again at the supporting documentation on the website in preparation. If you have some information or a query, particularly on infrastructure, please let us know.

## HS2

The HS2 information event for the Warrington area took place on September 15th at Culcheth Sports Club (Daten). Residents in the areas near the route were leafleted by HS2. The purpose of the meetings was for discussion of financial, environmental and engineering issues, plus the practical problems of construction. Information can be found on the Government website: [search www.gov.uk/government/publications/hs2-phase-2b-information-events-2017](http://search.gov.uk/government/publications/hs2-phase-2b-information-events-2017). There are other consultations taking place listed on this link.

The new team responsible for the Warrington section contacted us, as they use Parish Councils as their points of contact with local communities: if you have information on environmental, engineering, construction issues let us know - as well as HS2. For financial impacts, contact HS2, as well as your elected representatives. The Phase 2b Hybrid Bill deposit has yet to come: the 2b proposal has yet to go through Parliament.

## Save our Library

We had two very successful Saturday morning drop-in sessions to introduce the Friends of Culcheth Library. Members of the public contributed many interesting and positive suggestions for ways of using the library to benefit our community. We are still looking for more ideas and support! To give us your views and learn more about how to get involved, visit the Friends of Culcheth Library Facebook page or pick up a form in the library.

## Culcheth and Glazebury Christmas Market: Saturday, 25th November

Keep Saturday November 25th free for a fun day in Culcheth. We start in the morning with Gazebos and events throughout the village centre. Local traders will again showcase their Christmas wares on stalls around the village centre, there will be seasonal food and drink, musical entertainment throughout the day and funfair attractions to suit all ages. Visit the Parish and Methodist halls, the Scout Centre, the Library and Culcheth Centre for more events. We are even looking into the possibility of having an ice rink! Watch out for our publicity and flyers nearer the time.

## Law and Order

Don't forget that, as well as reporting incidents on 101, you can meet our village Police officers to discuss local problems. You can talk about your concerns once a month, usually the fourth Saturday, from 11.00 a.m. to 12.00 in the Scout Centre on Jackson Avenue.

The next sessions are due to take place on 28th October at 11am and 25th November at 11am. (It's possible that the venue may change to the Library - we'll try to keep you posted.)

## Publication of information

The Parish Council has adopted a publication of Information scheme. Details of who we are, what we do and how the public can access information is published on the main notice boards, in Culcheth Library and on our website [www.culchethandglazebury.org.uk](http://www.culchethandglazebury.org.uk)



St. Rocco's

# Lantern Walk



one mile sponsored walk

**£5 per child**  
(0-16 years)

*includes*

1 FREE lantern & medal

suggested sponsorship £25+

**accompanying adults FREE!**



**REGISTER AT**

**[www.stroccos.org.uk](http://www.stroccos.org.uk)**

**01925 575780**

**[fundraising@stroccos.org.uk](mailto:fundraising@stroccos.org.uk)**

**Sunday 22nd October 2017**

arrive from 5.30pm, walk starts 6.30pm

**at Orford Jubilee Hub**

Funfair and refreshments, fancy dress optional



# Cricketers look forward to a bright future

**GLAZEBURY Cricket Club is looking to the future with a positive attitude after one of its most difficult ever seasons.**

Problems started from the first day of the season when the Hurst Lane ground was judged unfit for play and the first few matches had to be played away from home.

When this problem was resolved, things didn't get much better for the 1st XI who found the going tough in division four of the newly-reconstituted Cheshire Cricket League. New players were needed, and although some were found, the team still finished in the relegation zone, which means division five beckons.

Fortunately, the 2nd XI fared better and finished in the top five of their league.

Also on the positive side, the club ran a highly successful summer programme for youngsters in the 5-8 age range, through the English Cricket Board's "All Stars" set-up. The aim is to start Under-11 or Under-9 teams during the winter months in readiness for next season.

More senior players are also being sought to strengthen both teams.

Acting chairman Sean Caine is optimistic for the future: "We are focussing our attention on recruiting more new members – particularly juniors. Hopefully in a few years from now we can bring through another set of our own, home-developed juniors, into our senior teams."

Anyone interested in joining the club can make contact on 01925 738446.

**ST. LEWIS' CATHOLIC PRIMARY SCHOOL**  
Headteacher: Mr M Boland

**OPEN MORNING**  
Tuesday 14th November 2017 - 9.30 – 11.30

Tour the school • Headteacher Presentation 10.10am & 11.10am  
See teaching & learning in action • View our enriching environment

All prospective parents welcome, no appointment necessary. Within our Catholic faith and values we will welcome and nurture families of any denomination.

Tel: 01925 762268 E-Mail: [stlewis\\_primary@warrington.gov.uk](mailto:stlewis_primary@warrington.gov.uk)  
Mustard Lane, Croft, Warrington WA3 7BD

**Courtyard Carpets**

**Opening Times:**  
Monday to Friday 9:30am - 4:30pm  
Saturday 10am - 3:30pm




Call in store to find your perfect flooring solution.  
Carpets, Vinyls, Karndean, Laminates, Screeding, Rugs

**1st for Service**  
**1st for Quality**  
**1st for Choice**

The Old Telephone Exchange, Common Lane, Culcheth, WA3 4HA  
01925 555 820 | [sales@courtyardcarpets.com](mailto:sales@courtyardcarpets.com)  
[www.courtyardcarpets.co.uk](http://www.courtyardcarpets.co.uk)

## CLASSIFIED

### CARPET CLEANING

**A1 STAINBUSTERS.** A Warrington company cleaning Carpets, Upholstery (Leather + Fabric) and Curtains in situ. FREE quotes for domestic and commercial. **Call John on 01925 852088 or 07765314080** (01/17)

**SIMPLY THE BEST CARPET CLEAN YOU** will ever have. Cleaners UK Ltd. Est. 28 yrs. Have your carpets & sofas beautifully deep cleaned leaving them fresh smelling & colour restored. Latest & best methods. Dry/steam. Leather cleaning, oriental rug specialist. Professional, reliable & affordable. **For more info call Neil Riley on 01925 264989/ 07831 336060 www.cleaners-uk.net** (01/18)

### CHIROPODY

**KATHRYN GRACE AND ASSOCIATES,** D.Pod.M., M.Ch.S., HCPC registered. Chiropractors/ Podiatrists, 30 years experience, offering friendly and professional footcare, also Gait Analysis. Care home & commercial contracts are welcome. Culcheth based. **Tel 01925 762404 www.parkviewcentre.co.uk** (01/17)

### CLEANING SERVICES

**arleys angels**

- Spring Clean Specialists
- Presenting your home for sale
- Moving house
- After building work cleans

**01925 266834**  
... because you're worth it!

### COMPUTERS

**AED COMPUTER SERVICES.** For all your PC servicing requirements including: Hardware repairs / upgrades, Software / Operating System re-installs, Virus removal, basic training: **Tel: 01925 766426, mobile: 07870 260657, email: [enquiries@aed-cs.com](mailto:enquiries@aed-cs.com), Web: <http://www.aed-cs.com>** (04/18)

**Advertise in the Classifieds from as little as £6 per month!**  
**Call 0800 955 5247**

### GARDENING SERVICES

**JP LANDSCAPES**

We are approved & recommended by Fenchurch & Partners Ltd for maintenance of all 10/11/12/13/14/15/16/17/18/19/20/21/22/23/24/25/26/27/28/29/30/31/32/33/34/35/36/37/38/39/40/41/42/43/44/45/46/47/48/49/50/51/52/53/54/55/56/57/58/59/60/61/62/63/64/65/66/67/68/69/70/71/72/73/74/75/76/77/78/79/80/81/82/83/84/85/86/87/88/89/90/91/92/93/94/95/96/97/98/99/100/101/102/103/104/105/106/107/108/109/110/111/112/113/114/115/116/117/118/119/120/121/122/123/124/125/126/127/128/129/130/131/132/133/134/135/136/137/138/139/140/141/142/143/144/145/146/147/148/149/150/151/152/153/154/155/156/157/158/159/160/161/162/163/164/165/166/167/168/169/170/171/172/173/174/175/176/177/178/179/180/181/182/183/184/185/186/187/188/189/190/191/192/193/194/195/196/197/198/199/200/201/202/203/204/205/206/207/208/209/210/211/212/213/214/215/216/217/218/219/220/221/222/223/224/225/226/227/228/229/230/231/232/233/234/235/236/237/238/239/240/241/242/243/244/245/246/247/248/249/250/251/252/253/254/255/256/257/258/259/260/261/262/263/264/265/266/267/268/269/270/271/272/273/274/275/276/277/278/279/280/281/282/283/284/285/286/287/288/289/290/291/292/293/294/295/296/297/298/299/300/301/302/303/304/305/306/307/308/309/310/311/312/313/314/315/316/317/318/319/320/321/322/323/324/325/326/327/328/329/330/331/332/333/334/335/336/337/338/339/340/341/342/343/344/345/346/347/348/349/350/351/352/353/354/355/356/357/358/359/360/361/362/363/364/365/366/367/368/369/370/371/372/373/374/375/376/377/378/379/380/381/382/383/384/385/386/387/388/389/390/391/392/393/394/395/396/397/398/399/400/401/402/403/404/405/406/407/408/409/410/411/412/413/414/415/416/417/418/419/420/421/422/423/424/425/426/427/428/429/430/431/432/433/434/435/436/437/438/439/440/441/442/443/444/445/446/447/448/449/450/451/452/453/454/455/456/457/458/459/460/461/462/463/464/465/466/467/468/469/470/471/472/473/474/475/476/477/478/479/480/481/482/483/484/485/486/487/488/489/490/491/492/493/494/495/496/497/498/499/500/501/502/503/504/505/506/507/508/509/510/511/512/513/514/515/516/517/518/519/520/521/522/523/524/525/526/527/528/529/530/531/532/533/534/535/536/537/538/539/540/541/542/543/544/545/546/547/548/549/550/551/552/553/554/555/556/557/558/559/560/561/562/563/564/565/566/567/568/569/570/571/572/573/574/575/576/577/578/579/580/581/582/583/584/585/586/587/588/589/590/591/592/593/594/595/596/597/598/599/600/601/602/603/604/605/606/607/608/609/610/611/612/613/614/615/616/617/618/619/620/621/622/623/624/625/626/627/628/629/630/631/632/633/634/635/636/637/638/639/640/641/642/643/644/645/646/647/648/649/650/651/652/653/654/655/656/657/658/659/660/661/662/663/664/665/666/667/668/669/670/671/672/673/674/675/676/677/678/679/680/681/682/683/684/685/686/687/688/689/690/691/692/693/694/695/696/697/698/699/700/701/702/703/704/705/706/707/708/709/710/711/712/713/714/715/716/717/718/719/720/721/722/723/724/725/726/727/728/729/730/731/732/733/734/735/736/737/738/739/740/741/742/743/744/745/746/747/748/749/750/751/752/753/754/755/756/757/758/759/760/761/762/763/764/765/766/767/768/769/770/771/772/773/774/775/776/777/778/779/780/781/782/783/784/785/786/787/788/789/790/791/792/793/794/795/796/797/798/799/800/801/802/803/804/805/806/807/808/809/810/811/812/813/814/815/816/817/818/819/820/821/822/823/824/825/826/827/828/829/830/831/832/833/834/835/836/837/838/839/840/841/842/843/844/845/846/847/848/849/850/851/852/853/854/855/856/857/858/859/860/861/862/863/864/865/866/867/868/869/870/871/872/873/874/875/876/877/878/879/880/881/882/883/884/885/886/887/888/889/890/891/892/893/894/895/896/897/898/899/900/901/902/903/904/905/906/907/908/909/910/911/912/913/914/915/916/917/918/919/920/921/922/923/924/925/926/927/928/929/930/931/932/933/934/935/936/937/938/939/940/941/942/943/944/945/946/947/948/949/950/951/952/953/954/955/956/957/958/959/960/961/962/963/964/965/966/967/968/969/970/971/972/973/974/975/976/977/978/979/980/981/982/983/984/985/986/987/988/989/990/991/992/993/994/995/996/997/998/999/1000/1001/1002/1003/1004/1005/1006/1007/1008/1009/1010/1011/1012/1013/1014/1015/1016/1017/1018/1019/1020/1021/1022/1023/1024/1025/1026/1027/1028/1029/1030/1031/1032/1033/1034/1035/1036/1037/1038/1039/1040/1041/1042/1043/1044/1045/1046/1047/1048/1049/1050/1051/1052/1053/1054/1055/1056/1057/1058/1059/1060/1061/1062/1063/1064/1065/1066/1067/1068/1069/1070/1071/1072/1073/1074/1075/1076/1077/1078/1079/1080/1081/1082/1083/1084/1085/1086/1087/1088/1089/1090/1091/1092/1093/1094/1095/1096/1097/1098/1099/1100/1101/1102/1103/1104/1105/1106/1107/1108/1109/1110/1111/1112/1113/1114/1115/1116/1117/1118/1119/1120/1121/1122/1123/1124/1125/1126/1127/1128/1129/1130/1131/1132/1133/1134/1135/1136/1137/1138/1139/1140/1141/1142/1143/1144/1145/1146/1147/1148/1149/1150/1151/1152/1153/1154/1155/1156/1157/1158/1159/1160/1161/1162/1163/1164/1165/1166/1167/1168/1169/1170/1171/1172/1173/1174/1175/1176/1177/1178/1179/1180/1181/1182/1183/1184/1185/1186/1187/1188/1189/1190/1191/1192/1193/1194/1195/1196/1197/1198/1199/1200/1201/1202/1203/1204/1205/1206/1207/1208/1209/1210/1211/1212/1213/1214/1215/1216/1217/1218/1219/1220/1221/1222/1223/1224/1225/1226/1227/1228/1229/1230/1231/1232/1233/1234/1235/1236/1237/1238/1239/1240/1241/1242/1243/1244/1245/1246/1247/1248/1249/1250/1251/1252/1253/1254/1255/1256/1257/1258/1259/1260/1261/1262/1263/1264/1265/1266/1267/1268/1269/1270/1271/1272/1273/1274/1275/1276/1277/1278/1279/1280/1281/1282/1283/1284/1285/1286/1287/1288/1289/1290/1291/1292/1293/1294/1295/1296/1297/1298/1299/1300/1301/1302/1303/1304/1305/1306/1307/1308/1309/1310/1311/1312/1313/1314/1315/1316/1317/1318/1319/1320/1321/1322/1323/1324/1325/1326/1327/1328/1329/1330/1331/1332/1333/1334/1335/1336/1337/1338/1339/1340/1341/1342/1343/1344/1345/1346/1347/1348/1349/1350/1351/1352/1353/1354/1355/1356/1357/1358/1359/1360/1361/1362/1363/1364/1365/1366/1367/1368/1369/1370/1371/1372/1373/1374/1375/1376/1377/1378/1379/1380/1381/1382/1383/1384/1385/1386/1387/1388/1389/1390/1391/1392/1393/1394/1395/1396/1397/1398/1399/1400/1401/1402/1403/1404/1405/1406/1407/1408/1409/1410/1411/1412/1413/1414/1415/1416/1417/1418/1419/1420/1421/1422/1423/1424/1425/1426/1427/1428/1429/1430/1431/1432/1433/1434/1435/1436/1437/1438/1439/1440/1441/1442/1443/1444/1445/1446/1447/1448/1449/1450/1451/1452/1453/1454/1455/1456/1457/1458/1459/1460/1461/1462/1463/1464/1465/1466/1467/1468/1469/1470/1471/1472/1473/1474/1475/1476/1477/1478/1479/1480/1481/1482/1483/1484/1485/1486/1487/1488/1489/1490/1491/1492/1493/1494/1495/1496/1497/1498/1499/1500/1501/1502/1503/1504/1505/1506/1507/1508/1509/1510/1511/1512/1513/1514/1515/1516/1517/1518/1519/1520/1521/1522/1523/1524/1525/1526/1527/1528/1529/1530/1531/1532/1533/1534/1535/1536/1537/1538/1539/1540/1541/1542/1543/1544/1545/1546/1547/1548/1549/1550/1551/1552/1553/1554/1555/1556/1557/1558/1559/1560/1561/1562/1563/1564/1565/1566/1567/1568/1569/1570/1571/1572/1573/1574/1575/1576/1577/1578/1579/1580/1581/1582/1583/1584/1585/1586/1587/1588/1589/1590/1591/1592/1593/1594/1595/1596/1597/1598/1599/1600/1601/1602/1603/1604/1605/1606/1607/1608/1609/1610/1611/1612/1613/1614/1615/1616/1617/1618/1619/1620/1621/1622/1623/1624/1625/1626/1627/1628/1629/1630/1631/1632/1633/1634/1635/1636/1637/1638/1639/1640/1641/1642/1643/1644/1645/1646/1647/1648/1649/1650/1651/1652/1653/1654/1655/1656/1657/1658/1659/1660/1661/1662/1663/1664/1665/1666/1667/1668/1669/1670/1671/1672/1673/1674/1675/1676/1677/1678/1679/1680/1681/1682/1683/1684/1685/1686/1687/1688/1689/1690/1691/1692/1693/1694/1695/1696/1697/1698/1699/1700/1701/1702/1703/1704/1705/1706/1707/1708/1709/1710/1711/1712/1713/1714/1715/1716/1717/1718/1719/1720/1721/1722/1723/1724/1725/1726/1727/1728/1729/1730/1731/1732/1733/1734/1735/1736/1737/1738/1739/1740/1741/1742/1743/1744/1745/1746/1747/1748/1749/1750/1751/1752/1753/1754/1755/1756/1757/1758/1759/1760/1761/1762/1763/1764/1765/1766/1767/1768/1769/1770/1771/1772/1773/1774/1775/1776/1777/1778/1779/1780/1781/1782/1783/1784/1785/1786/1787/1788/1789/1790/1791/1792/1793/1794/1795/1796/1797/1798/1799/1800/1801/1802/1803/1804/1805/1806/1807/1808/1809/1810/1811/1812/1813/1814/1815/1816/1817/1818/1819/1820/1821/1822/1823/1824/1825/1826/1827/1828/1829/1830/1831/1832/1833/1834/1835/1836/1837/1838/1839/1840/1841/1842/1843/1844/1845/1846/1847/1848/1849/1850/1851/1852/1853/1854/1855/1856/1857/1858/1859/1860/1861/1862/1863/1864/1865/1866/1867/1868/1869/1870/1871/1872/1873/1874/1875/1876/1877/1878/1879/1880/1881/1882/1883/1884/1885/1886/1887/1888/1889/1890/1891/1892/1893/1894/1895/1896/1897/1898/1899/1900/1901/1902/1903/1904/1905/1906/1907/1908/1909/1910/1911/1912/1913/1914/1915/1916/1917/1918/1919/1920/1921/1922/1923/1924/1925/1926/1927/1928/1929/1930/1931/1932/1933/1934/1935/1936/1937/1938/1939/1940/1941/1942/1943/1944/1945/1946/1947/1948/1949/1950/1951/1952/1953/1954/1955/1956/1957/1958/1959/1960/1961/1962/1963/1964/1965/1966/1967/1968/1969/1970/1971/1972/1973/1974/1975/1976/1977/1978/1979/1980/1981/1982/1983/1984/1985/1986/1987/1988/1989/1990/1991/1992/1993/1994/1995/1996/1997/1998/1999/2000/2001/2002/2003/2004/2005/2006/2007/2008/2009/2010/2011/2012/2013/2014/2015/2016/2017/2018/2019/2020/2021/2022/2023/2024/2025/2026/2027/2028/2029/2030/2031/2032/2033/2034/2035/2036/2037/2038/2039/2040/2041/2042/2043/2044/2045/2046/2047/2048/2049/2050/2051/2052/2053/2054/2055/2056/2057/2058/2059/2060/2061/2062/2063/2064/2065/2066/2067/2068/2069/2070/2071/2072/2073/2074/2075/2076/2077/2078/2079/2080/2081/2082/2083/2084/2085/2086/2087/2088/2089/2090/2091/2092/2093/2094/2095/2096/2097/2098/2099/2100/2101/2102/2103/2104/2105/2106/2107/2108/2109/2110/2111/2112/2113/2114/2115/2116/2117/2118/2119/2120/2121/2122/2123/2124/2125/2126/2127/2128/2129/2130/2131/2132/2133/2134/2135/2136/2137/2138/2139/2140/2141/2142/2143/2144/2145/2146/2147/2148/2149/2150/2151/2152/2153/2154/2155/2156/2157/2158/2159/2160/2161/2162/2163/2164/2165/2166/2167/2168/2169/2170/2171/2172/2173/2174/2175/2176/2177/2178/2179/2180/2181/2182/2183/2184/2185/2186/2187/2188/2189/2190/2191/2192/2193/2194/2195/219



# 3 MONTHS FREE MANAGEMENT!

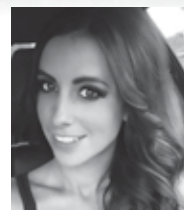
ANY NEW LANDLORD TO INSTRUCT  
COURTYARD TO FULLY MANAGE YOUR  
PROPERTY WILL RECEIVE 3 MONTHS  
FREE MANAGEMENT

Offer applies to any new landlord to Courtyard OR if you are unhappy with your current letting agent, then:-

WE WILL TAKE CARE OF THE HANDOVER WITH NO SET UP COSTS FOR FREE!  
STRESS FREE-NO HASSLE-PROVEN TRACK RECORD, IT ONLY TAKES ONE CALL  
AND WE WILL DO THE REST

Myself and the team at Courtyard are here to help

*Terms and Conditions apply.*



Sam  
Lettings Manager

**Courtyard**  
ESTATE AGENTS  
[www.courtyardhomes.co.uk](http://www.courtyardhomes.co.uk)

**T: 01925 767000 E: [ask@courtyardhomes.co.uk](mailto:ask@courtyardhomes.co.uk)**

15 Jackson Avenue, Culcheth, Warrington WA3 4EJ



[www.facebook.com/courtyardestateagents/](https://www.facebook.com/courtyardestateagents/)



[@courtyardhomes1](https://twitter.com/courtyardhomes1)

Call us for a free, no obligation valuation and marketing advice

***Recommended Karndean Retailer***



**Karndean**  
Designflooring



*Courtyard*  
**Carpets**

The Old Telephone Exchange, Common Lane,  
Culcheth, WA3 4HA

**Tel: 01925 555 820**