

Culcheth *Life*

FREE EVERY MONTH

Issue: 174
September 2017

Dootsons
SOLICITORS

See main ad
Page 8

23 Jackson Avenue
Culcheth

0845 330 5700

CULCHETH • CROFT • GLAZEBURY • GLAZEBROOK • LOWTON • WINWICK AND SURROUNDING AREAS

**Tractor
festival
a resounding
success!**

Centre pages

Picture: Paul Jackson



Courtyard

01925 767000

www.courtyardhomes.co.uk

All the latest news: www.culchethlife.com

Editor's Comment



Editor
Gary Skentelbery
Production
Paul Walker
Advertising
James Balme

Freephone
0800 955 5247

Editorial
01925 623633

Email
info@culchethlife.com

Websites
www.culchethlife.com
www.frodshamlife.co.uk
www.lymmlife.co.uk
www.warrington-worldwide.co.uk
www.warrington.tv

Address
New Media Centre
Old Road Warrington
WA4 1AT

Culcheth Life is published monthly by Orbit News Ltd.

The contents of this magazine are fully protected by copyright and nothing may be reprinted or reproduced without prior permission of the publishers.

The publishers are not liable for any statement made or opinion expressed by third parties in this publication.

Printed by TwentyFourSeven

IT is good to see the campaign to save Culcheth Library gathering momentum.

The group of residents and councillors who launched the campaign, after the library was first earmarked for closure last year have now launched the "Friends of Culcheth Library" and are hoping this will open up the campaign to the wider community.

Information leaflets have been distributed throughout Culcheth, Glazebury and Croft and a drop-in session held at the library to enable people to meet the organisers.

Another is due to be held on Saturday, September 2 between 10am and 12 noon when residents will be able to hear the latest news about the campaign's progress.

Resource

The main aim is to find a way to keep the facility open in its current location in the centre of the village and also to expand its use as a community resource.

A number of imaginative ideas have been put forward which would result in the building becoming much more than a library and we are sure more will be forthcoming. These are welcome, but we still believe the overriding need is for a library.

When we launched "Culcheth Life" in 2003 we were welcomed by numerous residents with the words: "Culcheth people love reading" and the evidence of the

14 years which have passed since then is that nothing has changed. People still look forward to the magazine each month – many of them picking it up in the library, incidentally – and, of course, Culcheth must be one of the few villages to still boast a book shop.

We are told there could be problems with the library building, with restoration costs prohibitive, but we are sure these are not insurmountable. In the long term, perhaps, major work may be necessary, but for the time being a

little make-do and mend will suffice. The best way to prolong the life of any building is to keep it heated and in regular use.

So we urge local people to join the "Friends", to use the library and support the campaign to keep it open. It is a vital resource not only for Culcheth but also for all the surrounding villages whose residents would face a much longer journey to a library if it were no longer there.

Deadline for the October issue of Culcheth Life September 12



CAMPBELL CROSSLEY & DAVIS
Licensed Insolvency Practitioners

Constructive solutions to debt for companies and individuals.



Ian Williamson
M: 07703 529212
Roger White
M: 07946 820299

www.campbell-crossley-davis.co.uk



Making It Easier For Your Business To Be Successful

We Care About You

You're a hard working entrepreneur and you need an accountant who does more than just tick the boxes.

You Need A Professional

Every one of our highly competent, skilful and professional people is here to help you.

You're Our Number One Priority

You're more than just someone we prepare accounts for, the success of your business means everything to us.

Are you looking to make your business life easier? Speak to one of our experts:

01925 761 600

or visit us at stylesandco.co.uk

styles and co
chartered accountants

culcheth tyres
and autocentre

01925 766380 / 766987

Servicing, Engine Diagnostics, MOT Preparation & Presentation

Your Local Autocare Centre

ANY MAKE, ANY SIZE, ANY VEHICLE

**F
R
E
E**

Brake Safety Checks

Tyre Pressure Check & Inflation

Wheel/Alignment Checks

**F
R
E
E**

Unit 1D Taylor Business Park, Warrington Road, Risley, WA3 6BL



Call us on: **01942 607250**

www.elbfireplaces.co.uk

70 Twist Lane, Leigh, Lancashire WN7 4DP

Fire Surrounds, Stoves, Gas & Electric Fires



Marble Fireplace & Fire Fitted £995

Is your conservatory too cold to use in Winter?

Why not install a stove?



Established
30 YEARS

- No need to change your carpet
- made to measure fireplaces
- Over 75 displays over 2 floors
- Live wood burning stove on display

NETAS

Warning after children seen 'playing chicken' on rail crossing

NETWORK Rail have issued a warning following incidents of children playing "chicken" on a level crossing at Culcheth.

In one instance, a train driver was forced to apply an emergency brake and there was a "near miss."

The footpath crossing is on Leigh Golf Club's course at Kenyon Hall, Culcheth.

Letter

In a letter distributed among householders near the crossing, Network Rail say trains using the line travel at speeds of up to 90mph – and more than 200 trains use the line daily.

The letter states: "It is imperative that all people crossing the line use the crossing in a safe manner."

It is not the first time nearby residents have been circulated by Network Rail. A letter was sent out in September last year.

But Network Rail say they have now received a further report of "unsafe behaviour" on the level crossing

"We have received a further report of unsafe behaviour on the

level crossing," the later states. "Children were observed playing chicken with an approaching train which resulted in an emergency brake application and a near miss."

"Additionally we have received a report of children trespassing in the vicinity of the level crossing."

Although the number of deaths on level crossings in this county is low compared to other countries – 44 people have died in recent years.

The letter also points out that trains on the line are powered by electricity carried through overhead lines.

Electrocuted

"Overhead lines carry 25,000 volts – that's 100 times greater than the power supply in your home. Electricity in overhead lines can 'jump' – you don't have to touch the overhead lines to get electrocuted."

"It is very important that people never 'play' near the railway and we would ask that any parents in the area should raise this with their children to warn them of the danger of level crossing misuse."



HUNTER HEALEY

CHARTERED ACCOUNTANTS

- Professional, approachable, affordable
- Accounts preparation & tax returns for individuals & companies
- Bookkeeping, payroll & vat
- Capital Gains, Estate Planning & Probate Work
- Business start up advice
- First meeting free of charge

Call Nigel Healey now on 01925 767222

Abacus House, 450 Warrington Road, Culcheth WA3 5QX

www.hunterhealey.co.uk



Trident Industrial Estate
Warrington

SECURE STORAGE UNITS

24 hour access, competitive rents and flexible terms

Trident Industrial Estate, Birchwood, Warrington, WA3 6AX

- 24 hour access
- All inclusive rents from approx £80 (Inc. VAT) per month
- Flexible licences with 1 months notice
- 22 units from approx. 100 to 500 sq ft
- Drive in units with electrically operated roller shutter doors
- 24 hour CCTV
- Electric lighting and sockets
- Drive in units available
- Flexibility to change unit size at short notice

Eileen Bilton
PARTNERSHIP
(01925) 444700
www.eileen-bilton.com

ST. MODWEN
01925 825950
cmunro@stmodwen.co.uk



Courtyard Carpets

Opening Times:
Monday to Friday 9:30am - 4:30pm
Saturday 10am - 3:30pm



Call in store to find your perfect flooring solution.
Carpets, Vinyls, Karndean, Laminates, Screeding, Rugs

1st for Service
1st for Quality
1st for Choice

The Old Telephone Exchange, Common Lane, Culcheth, WA3 4HA
01925 555 820 | sales@courtyardcarpets.com
www.courtyardcarpets.co.uk

Residents' wishes come true at local care home

RESIDENTS at Holcroft Grange in Culcheth, have seen their wishes come true as part of a new scheme at the home.

The scheme involves residents writing down their wishes on a piece of paper and posting it in a decorated wishes box to have them granted by Holcroft Grange's fairy godmother.

The 'Three Wishes' scheme was organised by the home's Activities Coordinator, Nicola Newens, after a discussion during a residents' meeting.

Joan Prescott, a keen reader who has lived at Holcroft Grange for eight months, recently had her first wish granted: a visit to the local library.

She commented: "I have not been to a library for many years, and I was so excited to be able to visit. I loved every minute of it, from

choosing a book to going up to the counter to check it out."

Other residents' wishes included being taken out to lunch with friends, having a freshly made latte every morning and seeing friends in another care home. So far, five residents have had their wishes fulfilled, with many more to be granted as the scheme continues.

Shirley Paton, Home Manager at Holcroft Grange, commented:

"The Three Wishes scheme has been a great success, and it has been so moving to see the effect it has had on residents. What may seem like a small thing to you or me can make a huge difference to someone's quality of life, and activities such as these are key to

driving our focus on person-centred care. A big thank you must go to our fairy godmother, Nicola, for all her efforts in organising the scheme - she always goes above and beyond to ensure our residents are leading healthy, happy and independent lives."



UNSWORTH'S FUNERAL SERVICE



Independent family owned Funeral Directors
 489 Warrington Road, Culcheth
 Providing 24 hour personal care by Jackie Unsworth, Phil Done, Kevin Melling and Tim Hargreaves-Stead
Tel: 766006

Newchurch Community Primary School

Invite you to New Intake Open Afternoon/Evening

Preparing to fly...



Newchurch will give every child a flying start by working in partnership with parents, staff and the community to develop and celebrate well-rounded citizens who will contribute in a positive way to society.

Weds 20th September 2017 at 1.30pm
Sat 30th September 2017 at 10am
Weds 4th October 2017 at 7pm
Children welcome

We are proud of our school – find out why!

Glebeland, Culcheth, Warrington. WA3 4DX
 Telephone 01925 763427

Culcheth Community Primary School

Where Learning is Fun!

OPEN DAYS
 October 18th and November 15th:
 2pm and 6pm

Culcheth Community Primary School is a warm, welcoming, vibrant school that provides a first class education and a wide range of extra-curricular opportunities for all children. Wrap around care is provided by Culcheth Day Nursery, which shares the same site.

Individual visits to school warmly welcomed – please call in or phone to make an appointment

01925 764312
 Further information can be found on our website www.culchethprimary.co.uk

"A caring environment in which pupils flourish", parents are 'overwhelmingly supportive of the school' and are 'delighted with the quality of education that their children are receiving' "
 Ofsted June 2017

Our School Values

- Respect
- Teamwork
- Honesty and trust
- Friendship and kindness
- Creativity and courage
- Happiness, fun and enjoyment



Unit To Let

Greenwood Court

The office is a mid-terrace single storey property with parking to the front of the building for 2-3 cars and unlimited parking spaces on the main car park.

The offices are of modern construction standards; CAT 2 lighting, double glazing and air conditioning and heating. CAT 5 cabling has already been fitted throughout.

This recently converted 1000 Sq Ft. office and 750 sq ft warehouse comprises of a canteen area, WC and a meeting room, all done to a modern standard.



1,750 ft²

Property characteristics:

- High Speed Internet available with free connection
- CAT 5 cabling throughout office
- 3 compartment trunking throughout
- Stylish, contemporary interior design
- Located close to M6, M62 & A580
- Quiet, rural location
- Located on a Family Managed Business Park with very high occupancy rates (98%)
- Ample free parking included
- Air conditioned office
- Kitchen/Canteen area
- Beautiful landscaped areas
- Close to local amenities

01925 763851

TaylorBusinessPark

LOSING
TENANTS
TO SLOW
INTERNET?

Rural & Commercial
landlord specialist



CHESHIRE
TELECOM

Call now on 01925 640640

www.cheshiretelecom.co.uk

Bents announced as 'Best Destination Garden Centre'

BENTS Garden & Home has been named as the 2017 Best Destination Garden Centre in the North West by the Garden Centre Association (GCA).

The announcement comes in a year when the family owned and run business celebrates its 80th anniversary since founders Alfred and Margaret Bent started to sell roses from their front garden just yards from the Centre's current location.

The title follows a strict audit of garden centres throughout the country with the results announced on a regional basis. The GCA comprises over 200 of the country's best garden centres and as a member each undergoes a strict audit process with judges assessing every part of the centre from plant and product quality to customer service and innovation.

Bents received a spot visit by the



Left to right: Tamzin Bates, Heather Hiley, Tony Lewis, Emma Sadler and Matthew Bent from Bents Garden & Home with Roger Crookes, GCA Inspector and Keith Laird, GCA NW Chairman.

GCA auditors and recorded one of the best scores in the country, which not only saw them awarded Best Garden Centre in the North West but also the regional title for Best Restaurant and the Environmental and Community Award.

Matthew Bent, Managing Director at Bents Garden & Home said: "The GCA title is the one all garden centres want and we are delighted to be acknowledged

as the Best in the North West, especially in what is our 80th year; a great way to celebrate our anniversary.

"It is a credit to all of our colleagues who work extremely hard to ensure our standards remain as high as possible throughout all areas of the Centre and we would like to say a big thank you to each and every one of them for their continued commitment and input."

The GCA awards are significant within the industry as they are based purely on quality standards throughout every area of the centre. Garden centres don't pay to enter the awards or put themselves forward; members are all visited by inspectors with no previous knowledge of the exact date to ensure standards remain high at all times.

WE HAVE MERGED, WE ARE NOW:

WARRINGTON & VALE ROYAL COLLEGE


Warrington Collegiate


Mid Cheshire College

STARTING COLLEGE THIS SEPTEMBER?

IT'S NOT TOO LATE TO ENROL!

**ARE YOU A SCHOOL LEAVER?
OR AN ADULT WANTING TO GAIN
A NEW SKILL OR QUALIFICATION?**

**Visit Learner Services
Monday – Friday
Late night opening Thursday until 7pm
Call 01925 494 400**



**FREE
BUS**

Available for school leavers
travelling from Irlam, Culcheth,
Birchwood and Padgate*.

www.wvr.ac.uk

01925 494 400

Ladies' Day raises £503 for cat charity

A "LADIES Day" in the garden at Linda Miller's home in Winwick raised £503 for charity group Kitten Karers.

Thirty women attended the event and a highlight of the day was a competition for the three best dressed ladies.

Winners were 1, Lily Gray, from Glazebrook, 2, Jill Wood, from Winwick and 3, Amy Worthington, from Penketh.

Shopkeepers in Culcheth also contributed to the day by buying raffle tickets.

Kitten Karers is a small charity dedicated to rescuing cats and kittens. It is entirely self-funding and is always on the lookout for loving homes for its feline friends.

In addition to the Ladies Day, the group organises a Christmas tea party and runs a tombola stall at Winwick Carnival to raise funds.

The charity, which has a shop in St Helens, can be contacted on 01744 735231 or on 07725858282.



Only £40 Each!

Black Tie Affair

New Years Eve, 2017!

Casino Night at The Culcheth Arms
Culcheth, Warrington, W13 5DL

Ticket Only Event
1 Glass of complimentary Fizz with every ticket.

Tickets go on Sale September 23rd 2017!

www.theculchetharms.co.uk
bookings@theculchetharms.co.uk

Talking Teeth ^{in Culcheth} Dental Practice



493 Warrington Road, Culcheth

Telephone:

01925 766398

We are welcoming new patients in and around the Culcheth area

- *Register in the practice or over the phone
- *Private and Denplan patients
- *Hygienist available
- *Short waiting lists for treatment

Get the smile you always dreamed of with 'Invisalign Clear Braces'

- Free invisalign consultation
- Price start from £1200
- Payment Plan available

Throughout September 17. Please quote reference CL09



We are here to help when relationships break down

- Divorce and Separation
- Financial issues
- Children
- Cohabitation
- Civil Partnerships
- Change of Name
- Domestic Violence
- Pre Nuptial and Cohabitation Agreements



Dootsons
SOLICITORS



23 Jackson Avenue, Culcheth

01925 765212

Email: famis@dootsons.co.uk

www.dootsons.co.uk

CULCHETH • LEIGH • NEWTON • ATHERTON

Tractor Festival a r

by Paul Jackson

THERE was a fantastic turnout for the 3rd annual Tractor Festival at Bents Garden & Home, Glazebury.

Glazebury's long history of farming was again celebrated with the village's annual Tractor Festival.

Scores of vintage tractors and other agricultural machinery were on show at Bents Garden & Home, many of which had been lovingly restored and rebuilt by their proud owners.

The event helped raise money and awareness for All Saints' Church, Glazebury and Bents' 2017 Charity of the Year, the Alzheimers Society.

The fun began on the car park of Bents Garden & Home when the tractors, ancient and modern, were on show along with a chance to meet and guess the names of two young calves, stalls and other entertainment.

Sitting on and pretending to drive the vehicles proved very popular with children of all ages. The tractor exhibition was organised by Rachael McGarrie in conjunction with the staff from Bents Garden and Home.

At 3pm the tractors drove in procession to Hawkhurst Farm making a grand finale to another wonderful community event.



resounding success



THE
MOMENT
YOU GET
THE LAST
BULB
PLANTED

bents.co.uk *Enjoy every moment* | bents

The Gardening Guide

“ Plant spring flowering bulbs outside now for a stunning display next spring ”

Simon Bax,
Plant Area Specialist

- Make sure that pests such as slugs and snails and diseases such as mildew are dealt with as soon as they are seen
- Fruit trees can be planted now as they benefit from the warm soil and the cool air
- When the autumn rain arrives fertilise your lawn with a slow release autumn feed
- Reduce watering and feeding in preparation for the winter period when most plants go dormant and just need keeping moist

For events and online shopping visit bents.co.uk

GARDEN | HOME | LIFE | FOOD

80 ANNIVERSARY | bents

Girlguiding volunteers recognised at Star Awards

SEVERAL Girlguiding Culcheth District Leaders were recently recognised for their contribution and commitment at the prestigious Warrington Voluntary Action's (WVA) Star Awards at Orford Jubilee Hub.

Sara Isles, Leader of 7th Culcheth Guides and 6th Culcheth Brownies, was presented with the Commitment to Volunteering award by Cllr Les Morgan, Mayor of Warrington.

There were many other nominations in this category, including Justine Doyle, Girlguiding Culcheth District Commissioner.

Miriam Kletz, a Culcheth Rainbows Leader, was also nominated for a Long Service award and Holly Peddie, a 6th Culcheth Brownies Young Leader, for a Young Volunteer award.

Sara Isles commented, "I was very honoured and delighted to win my award, especially as there was such tough competition!"

Justine Doyle added "Sara is a truly inspirational leader and her award is thoroughly deserved due to her dedication and time she gives to our District but also by helping senior guides attain their Duke of Edinburgh awards.

"She is a very worthy winner".

Miriam Kletz stated: "Being nominated for these awards is testament to our 60 years of combined Girlguiding experience, where we have made a positive impact on young girls' lives".

Sara, Justine, Miriam and Holly were very flattered to be nominated by their colleagues in the Girlguiding Culcheth District.

Anyone who would like to be involved in helping shape girls lives in your local community then please contact GirlguidingCulchethDistrict@hotmail.com or register your interest here: www.girlguiding.org.uk/interested



The Culcheth District team.



Sarah receives her award from sponsor Roy Smith from Golden Gates Housing.

MP praises council over "willingness to listen" over free travel

WARRINGTON Borough Council has performed a U-turn over a home-to-school walking route following an approach from local MP Helen Jones.

And the Warrington North MP has praised the authority for "seeing sense" over the issue.

She says the council has accepted a compromise and shown a willingness to listen to people's concerns.

In 2015, the council made it clear that pupils travelling between Croft and Culcheth High School via Wigshaw/Glaziers Lane would continue to receive free transport as the route was considered to be hazardous.

It was confirmed that this arrangement would remain in place for "the foreseeable future."

This summer parents received letters confirming the free transport would remain in place – but only a few days later received a further communication saying it would be withdrawn because the route was now considered as "non-hazardous."

Worried parents contacted the MP who raised their concerns with the council and proposed a compromise solution which has been accepted by the council.

Pupils who receive free travel as of September this year and will continue to do so until they finish their statutory education – that is until the end of their Year 11 studies.

Free travel will not be available for new starters from September next year.

Ms Jones said: "I am delighted that the council has seen sense on this issue and accepted my compromise solution. To suggest that 'the foreseeable future' meant

less than two years was difficult for parents to accept.

"Whilst I still believe the route to be hazardous, the compromise at least allows time for parents of new starters in 2018 to budget for school transport costs whilst allowing those currently in receipt of free travel to continue to do so until the end of their Year 11 studies.

"It also allows time for further discussions about the status of this route.

"The council have shown a willingness to listen to people's concerns and to make adjustments to their original decision as a result – they should be congratulated on

doing so."

Culcheth, Glazebury and Croft borough councillors Matt Smith, Joan Grime and Jan Davidson issued a joint statement, saying: "We remain seriously concerned about the safety of children using this proposed pedestrian route, in particular in relation to the unusually wide road crossing at the junction with Glaziers Lane. The council only consider this crossing to be non-hazardous if a privately owned hedge is kept cut back, and this cannot be guaranteed all year round. We welcome the delay to the implementation of the changes which will see the safety of many Croft children maintained."



Fantastic results at Birchwood College

BIRCHWOOD college reported "fantastic" BTEC and A level results.

Students achieved 100% pass rate in BTEC subjects, 78% of which were Distinction* to Distinction, with 93% of students attaining at least a Merit in their studies.

BTEC Acting and Music students achieved an amazing 100% pass rate at Distinction* to Distinction, followed closely by BTEC Applied Science at 88% at Distinction* to Distinction and BTEC Health & Social Care at 84%, Distinction* to Distinction.

At A-Level, a "fantastic" 97% of students achieved a pass between A* and E

Particular A-level successes lay in the following subjects:

Maths, with a 100% pass rate between A* to C.

Biology, where 50% of our

students achieved A* to A and Geography with 50% of students achieving between A* and B.

The college was delighted to announce that 71% of their learners met or exceeded their target grade.

Particular Star Achievers include: Rhian Bland, who achieved 3 As at A-level for Biology, Chemistry and Maths, plus Distinction* in BTEC Music. Rhian will go on to study Biological Sciences at The University of Lancaster.

Luke Allsup achieved an A in A-Level Biology, B in Maths, A* in Extended Project and Distinction* in BTEC Music Composition. Luke will be going to study a BSc in International Disaster Management and Humanitarian Response at The University of Manchester.

Ellie Fradley, who will be studying LLB Law at The University

of Liverpool, achieved B in A-Level Biology, Law and Geography and an A in her Extended Project.

Bobby Hewitt, did extremely well, achieving in A-Level: Biology A, Chemistry B and Geography B. Bobby will be studying Oceanography at Southampton University.

Katie Evans, who moves on to study BA Events Management at Manchester Metropolitan University achieved a fantastic Double Distinction* in BTEC Music and Distinction* in Performing Arts.

Dillon Alcock, who achieved a fantastic Triple Distinction* in BTEC Sport, will be moving on to his dream of studying Sports Coaching at Leeds Beckett University.

Bid to tackle new World Record - playing football on top of Kilimanjaro



GLAZEBURY resident Jonathan Fenney is set to tackle the World Record Breaking Kilimanjaro Challenge 2017 in aid of the Steve Prescott Foundation.

On October 11 this year he will be part of a 43 strong team flying out to Tanzania to climb Mount Kilimanjaro, the highest free standing mountain in the world. Once at the crater just below the summit the team intend to set a new Guinness World Record for the highest altitude football match in history.

To make this an official world record they need to take goal posts, pitch markings, etc, and the match has to be played under official FIFA rules. Therefore a full 90 minute game, eleven a side with limited substitutes and qualified match officials. Ex-Premier League referee Mark Halsey will be refereeing the match.

Originally from Rainford, St Helens, but now living in Glazebury Jonathan has followed the Steve Prescott Foundation closely and always wanted to take part in one of their extreme fundraising exploits.

He said: "Their fundraising achievements and awareness generated to cancer is very admirable. Everybody knows somebody who has suffered from this terrible disease and this is true of myself."

"This year the foundation is celebrating its 10th year anniversary so what better time to join in?"

"I grew up watching Steve Prescott play for Saints and I am also a huge football supporter so

to help this great charity with a football connected challenge was perfect for me. However, I am not underestimating the challenge ahead and I am putting in so much hard work out on the hills and mountains of the UK. I am well aware of the problems that altitude can cause, and probably the blisters, but I am determined to get through it."

Steve Prescott was an ex-professional rugby league player who played the sport to international level. In 2006 he was diagnosed with a rare form of cancer, Pseudomyxoma Peritonei.

Steve set the foundation up and set about raising funds through huge physical challenges. In 2013 Steve underwent pioneering surgery but tragically died in November that year.

The foundation continued with it's great work in raising invaluable funds for The Christie Hospital, Try Assit (ex-rugby players support) and Steve Prescott Foundation Special Causes Fund.

The funds raised have indeed helped to save the lives of other cancer sufferers and assisted other living with the illness.

If anybody would like to donate to Jonathan's fundraising they can text JONF60 £5 to 70070 or visit his personal fundraising page is at www.justgiving.com/JONATHANFENNEY

He is also offering local businesses a chance of some quite unique marketing and publicity from the summit of Mount Kilimanjaro. Please email him at jfenney@live.co.uk for further details.



Open Evening

Thursday 5th October 2017



Arrival and Registration

6.00pm

Headteacher Presentation

6.30pm and 7.00pm

Warrington Road, Culcheth, WA3 5HH

Phone: 01925 767587

www.culchethhigh.co.uk

➤ RESPECT
➤ HONESTY
➤ EXCELLENCE

The Cherry Tree

2 meals for £10 served all day Mon-Fri

£5 OFF YOUR FOOD BILL
when you spend £20 during September 2017

BOOK NOW FOR CHRISTMAS. MENUS FROM £10.49
Visit www.thecherrytreewarrington.co.uk for more offers

35 Common Lane, Culcheth, Warrington. WA3 4EX
01925 762624 email: bun212199@mbplc.com



Culcheth Karate Club

at Newchurch Parish Hall, next to Sainsbury's

MONDAYS AND THURSDAYS

5:30pm - Ages 4-7 years • 6:30pm - Ages 8-12 years

7:30pm - Ages 13+ years. Open School Holidays

****First Lesson Free****

Tel: 01925 827376 Mob: 07808048488

Email: nwka@hotmail.co.uk

www.nwka.co.uk

Facebook: @northwestkarateacademy



Teaching students in Culcheth since 1984

Official Members
IOC Recognised

twentyfour
seven
design & print ltd

01925 240247

WWW.247PRINT.NET



Traditional Values MODERN IDEAS



Glazebury gas pipe upgrade set to finish early



A MAJOR project to upgrade gas pipes under a busy A-road in Glazebury is now scheduled to be completed around seven weeks early. With only 400 metres of 2.4km of iron mains left to replace, Cadent, the UK's biggest gas network is forecasting to be clear of Warrington Road during September.

Contractors working for Cadent began the scheme in April and had anticipated working until the end of October.

The engineers thanked residents, motorists and businesses for their continued patience, recently presenting flowers to the landlady at the Raven Inn for allowing vehicles to park on site and for permitting work within the pub's boundary.

Paul Phillips, site manager, said: "This has been a big job, on a busy major road, and we planned carefully for it. We've worked hard to minimise the inevitable disruption this type of work causes. Our teams have been very grateful for the support and patience everyone has shown. These new pipes are hard-wearing and will last at least 80 years, ensuring a safe and reliable gas supply to homes and businesses."

The contractors worked overnight to replace the supply pipes feeding Bents Garden and Home centre, to minimise impact on this popular business. They have kept local secondary and primary schools informed as work progresses. Plans are in place to landscape and plant flower beds once the teams and machines move off.

Businesses and residents affected by this work can continue to ring the customer team for further information, on 0161 703 1000 / 1010.

Sporting "school of the year"

CULCHETH Primary School has been named the "School of the Year" title by the Warrington School Sports Partnership.

Karen Rodgers, deputy head sports co-ordinator at the school was also named Staff Member of the Year.

Year 4 pupil Rosie Monks also won the Disabled Pupil of the Year" award.

She took part in Boccia Sports, Change for Life, Road to the Gold Coast Festival, an ability day and a Paralympian Day.

In addition, Mr Gaz Scott won Volunteer of the Year – he has been volunteering at the school for four years in a range of sports, specialising in a running club.

Head teacher Amanda Dodd said: "Our school offers a huge range of sports to pupils and one of our main aims is to keep pupils active. We hold regular sports weeks and events.

"We are delighted to have won these awards."



Chelsea is a jazz messenger

CULCHETH'S gift to the world of jazz, Chelsea Carmichael, is returning to her home village to provide encouragement to young musicians at her former school.

The 24-year-old up-and-coming tenor saxophonist will be bringing a group of six young professionals to put on a three-day interactive workshop at Culcheth High School from October 4-6.

During their stay, they also hope to stage a concert in Warrington.

Chelsea, who first learned to play in the Culcheth High School Swing Band, graduated from London's Trinity Conservatoire of Music and Dance last year and is now a full-time professional musician and composer.

She plays with the National Youth Jazz Orchestra (NYJO) and various other groups – including the Guy Barker Big Band which appeared in this year's BBC Proms concerts at the Royal Albert Hall and will be televised on BBC Four on September 1st.

Her visit to Culcheth is part of the NYJO Jazz Messengers outreach project and involves visiting schools and colleges across the country, explaining to aspiring musicians what the journey is like from student to professional and showing that jazz can provide a viable career.

She said: "It's not an easy career path to follow, but it can be done, particularly in London. Our job is to spread the word to the rest of the country and I am passionate about doing that."

The group she will be leading on the tour consists of herself on tenor sax, flute and clarinet, and other up-and-coming musicians on trumpet, trombone, bass, drums and either piano or guitar.

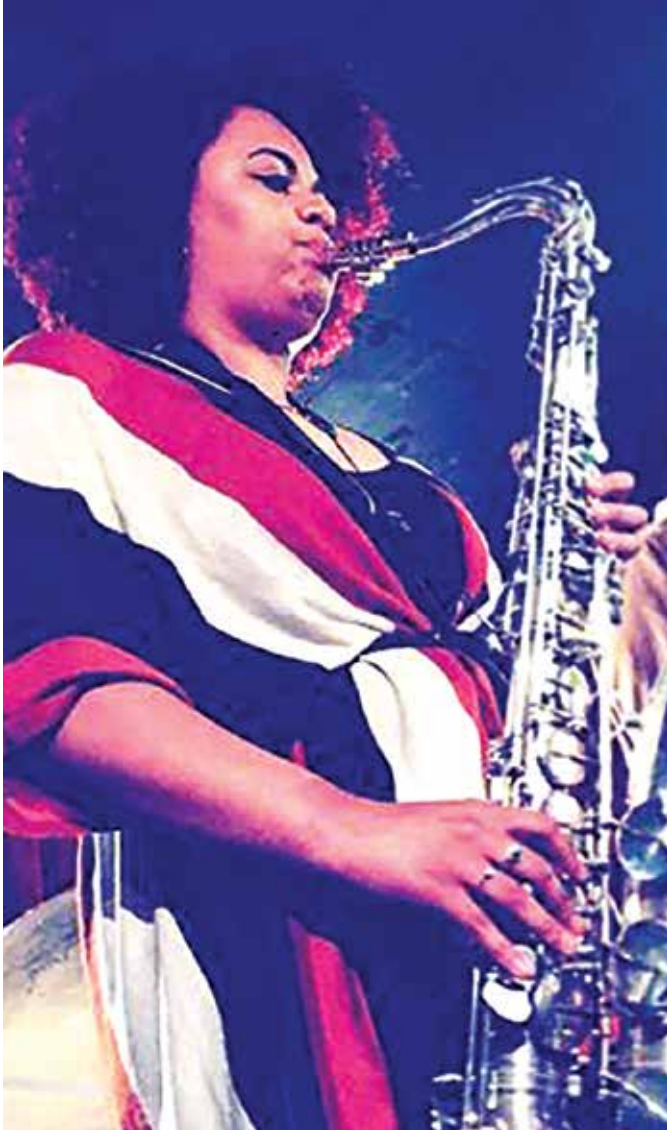
When she is not playing, Chelsea turns to the piano for composing, experimenting with different instrumentations, electronic sounds, etc. But she loves the excitement of playing new music in front of live audiences.

It is all a far cry from the day when she came home from school and asked her Dad, Winston, if he would buy her a violin.

He didn't fancy listening to someone learning the violin in the house and suggested he buy her a piano instead. She agreed – but then found herself drawn towards jazz and switched to the tenor sax as her main instrument.

Now Winston is her No 1 fan – and immensely proud of her achievements.

He said: "Chelsea is now playing regularly with some of the top musicians in the country and it is wonderful that she is able to come back to her old school to help and encourage today's pupils."



LOCAL CARPETS

All HBS Branded Carpets
from only £9.99m2

PLUS

FREE FITTING*

FREE UNDERLAY*

FREE DELIVERY*

FREE MEASURING

*Within 7 miles, 8mm standard, min16m2, hsl



**Clearance
Mayfair Bed
Only 10 Left**

5 Colours to choose from
10 year manufactures
guarantee

RRP £599

Was £399

**Now +
£245**

PLUS
FREE HEADBOARD
and
FREE DELIVERY

25-27 Orchard St, Warrington WA1 2TE

t: 01925 419423

4 Gas St, Leigh WN7 4PD

t: 01942 665560

OPEN 7 DAYS A WEEK

Monday to Saturday, 9.30am - 5pm Sunday, 11am - 4pm

*When purchasing equivalent lock underlay minimum size applies

www.local-carpets.com





Walking football team reach final at first attempt

A WALKING Football team from Culcheth has taken part in its first tournament – and reached the final.

Datem WFC, an Over Fifties walking football team which trains at Culcheth Community Campus on Tuesday evenings, was only formed last November.

But when they played in their first tournament – the St Helens Walking Football festival – the team won four games to reach the final but then lost out 1-0 to a team from Wigan.

It was a close fought game and the Culcheth players found it an enjoyable experience.

A George Formby treat for WI members

MEMBERS of Newchurch WI were treated to a selection of George Formby numbers when guest speaker Dave Duckett turned up with a ukulele.

His talk, based on his working life, was entitled "Tales Out of School" and were certainly entertaining for someone who started out as a librarian.

He moved on to working in prisons and schools and his love of guitar playing and "exotic" animals finally took him into setting up workshops in schools and young offenders' institutions.

Children loved to learn about spiders, cockroaches, snakes and other "exotics" in workshops arranged to fit in with their class curriculum. He showed a huge African snail shell to members with a gentle warning that these creatures were now settling in nicely as British wildlife!

Poetry was the basis for other workshops, poems by the children and by young offenders to express their views on the world. Finally music with simple home-made instruments was used for fun and for learning about sound waves and vibrations. This led to the appearance of Dave's ukulele and a George Formby selection before Barbara Delve gave the vote of thanks.

After tea served by Barbara Alldred and Dot Appleton, members heard the results of the August competition (An Old School Report). Dave chose Marjorie Pugh as winner, with Aileen Paterson and Jean Riley as runners-up.

President Doreen Procter hoped that more singers would join the Christmas choir – only four months to go!

Margaret Harrop was thanked for the pretty plant given for the president's table.

The evening closed with a nursery rhyme quiz. The next meeting is on September 13 when the speaker will be Anne Mills. Contact Jean Riley for more details. (01925 762722).

simplesolutions
Financial Management Ltd
INVESTMENTS & PENSIONS



INVESTMENTS

Our investment expertise will ensure that you have the most suitable investment to help you achieve your financial goals.

We use:

• Asset Allocation • Risk Profiling • Diversification • Correlation

PENSIONS

Pensions have changed since the March 2014 budget and you now have a lot more options to consider

TECHNOLOGY

Simple Solutions uses the latest technology to keep you updated, even when you are on the move or abroad, check out our website for more details.



1st Floor, 67 London Road
Stockton Heath, Warrington
WA4 6SG

Tel: 01925 266628 Fax: 01925 267043

www.simplesolutions.financial @SimpSolsIFA

Simple Solutions Financial Management Ltd is authorised & regulated by the FCA. The registered office is 1st Floor, 67 London Road Stockton Heath, Warrington WA4 6SG. Registered in England & Wales. The company Re No 6920858.

The real Tom Jones visits Croft WI

TOM Jones was the guest speaker at the August meeting of Croft WI and initially amused members by stating that he had endured 45 years of jokes regarding his name.

He was also quick to point out that that he was the "real" Tom Jones, and the singer's original name was Woodward.

Instead of breaking out with song the real Tom Jones then went on to give a wonderful travelogue of British Columbia in Western Canada.

Aided by spectacular photographs, Tom spoke about his journey from Vancouver to Jasper in the Rocky Mountains. In size, British Columbia has four times the area of the UK, but whereas the UK has around 65 million inhabitants, BC has just 4.4 million and 2.4 million of these reside in Vancouver! A very beautiful city, Vancouver has a large Chinese community, also many of the large buildings on the expansive shoreline are owned by the Duke of Westminster.

Not taking the usual route, Tom's pictures of his journey through what is known as "The Wilderness" reflected the scarcity of people and showed stunning vistas of Lakes, Forests and the majestic Rocky Mountains, average height 10,000 ft. above sea level and still snow covered in midsummer. The Bear population was also mentioned, apparently tourists are advised to carry a whistle and blow hard to let the bears know they are around and not to approach with a camera any nearer than 100 mtrs. There were also some amusing shots of the small towns dotted along the way, one small café displaying a sign saying "Junk Food a Specialty" and also a house with the Welsh name Pen-y-Graig, which an audience member of Welsh extraction translated as Head of the Rock.

An informative and amusing evening was enjoyed by all and a vote of thanks was given by President Anne Lamming.

The competition "A Travel Tip" was won by Doris Fryer, 2nd Jill Coon, 3rd Lesley Lloyd.

Diary Dates:-

- 29th Aug - Readers Group - 10.00 am Christ Church Hall
- 12th Sept - Busy Bakers - Christ Church Hall
- 19th Sept - Afternoon Tea - Midland Hotel, Morecambe
- 25th Sept - Group Meeting - Padgate Community Centre
- 29th Sept - MacMillan Coffee Morning - Youth Centre, Croft
10am-12noon Cost £2

WI members hear about innovations at Chat Moss

MEMBERS of Culcheth WI heard about innovations at Chat Moss thanks to an interesting talk from Lancashire Wild Trust.

President Joan Jarvis, opened the meeting by welcoming members and two visitors. She thanked Frances Robinson for the rose bouquet on the table.

Joan then introduced Lydia Dayes and her team from the Lancashire Wildlife Trust to talk about about innovations at Chat Moss.

The team are now, thanks to a Lottery grant, working with Salford, Warrington and Wigan to provide walkways so that more people can access the Moss. They are also working on a 'corridor' for wildlife across the whole area from Warrington to Wigan.

Since WW2, many chemicals have been added to our environment and members were encouraged to think about the impact of these, such as over-use of weed killers.

Members heard everyone could help by encouraging wildlife such as bees, birds and hedgehogs into our garden by planting appropriate flowers and shrubs. The butterfly population has dropped by 70% in urban areas, so by planting lavender and buddleia would help them to increase again.

Members heard that in 1854, there were 69 collieries in Leigh alone, and since these closed, flashes and wetlands have formed, becoming a haven for wildlife. But various birds like the Willow Tit, the Yellowhammer and Lapwing had become endangered and also carnivorous plants such as Sundew. There are also adders and slowworms at Risley Moss!

Lydia ended by saying that members should be very proud of the achievements of the area as we had the first canal, the first steam trains, and also fed London with local salad ingredients.

Members then received a report from the AGM that had been held in June at the Liverpool Echo Arena. 400 new WIs have been formed in the last year.

Outings to look forward to are Martin Mere in August and 'The Lady-killers' at the Brindley in September. There is also an evening arranged by the area group, Mosslands, which is a talk by Lilian King entitled 'Me, The Police, The Queen and other mishaps'.

Next meeting is September 19, 2pm at the Parish Hall, when the Speaker will be the popular Brian Halliwell continuing his 'Golden Age of Comedy'. Visitors and new members are always made very welcome.

CLASSIFIED

CARPET CLEANING

A1 STAINBUSTERS. A Warrington company cleaning Carpets, Upholstery (Leather + Fabric) and Curtains in situ. FREE quotes for domestic and commercial. **Call John on 01925 852088 or 07765314080** (010/17)

SIMPLY THE BEST CARPET CLEAN YOU will ever have. Cleaners UK Ltd. Est 28 yrs. Have your carpets & sofas beautifully deep cleaned leaving them fresh smelling & colour restored. Latest & best methods. Dry/steam. Leather cleaning, oriental rug specialist. Professional, reliable & affordable. **For more info call Neil Riley on 01925 264989/ 07831 336060 www.cleaners-uk.net** (012/17)

CHIROPODY

KATHRYN GRACE AND ASSOCIATES, D.Pod.M, M.Ch.S., HCPC registered. Chiropractors/ Podiatrists, 30 years experience, offering friendly and professional footcare, also Gait Analysis. Care home & commercial contracts are welcome. Culcheth based. **Tel 01925 762404 www.parkviewcentre.co.uk** (012/17)

CLEANING SERVICES

arley's angels

- Spring Clean Specialists
- Presenting your home for sale
- Moving house
- After building work cleans

01925 266834
... because you're worth it!

COMPUTERS

AED COMPUTER SERVICES. For all your PC servicing requirements including: Hardware repairs /upgrades, Software / Operating System re-installs, Virus removal, basic training: **Tel: 01925 766426, mobile: 07870 260657, email: enquiries@aed-cs.com, Web: http://www.aed-cs.com** (04/18)

GARDENING SERVICES

JP LANDSCAPES

We are approved & recommended by Festrade for contractors call 01925 384 588 and check website

- Block Paving - Tarmac
- Slabbing - Driveways
- Patios - Graveling
- Brickwork - Steps
- Fencing - Decking
- Power washing - Turfing
- Driveway Repairs

For a FREE no obligation quote please call **0800 858 9961 or 01925 393 188** or text from 9pm on **07818 365 364 / jplandscapes56@gmail.com**

Vale Avenue, Warrington, WA2 6AY

HOME SERVICES

ATLAS
Your friendly local independent pest controllers

SUMMER SPECIALS:

- WASP CONTROL £35
- INVASIVE BEE CONTROL £55

Affordable, professional, guaranteed service. Fully insured, fixed prices - no surprises once on site! Discrete vehicles, no embarrassing signs
07999 487 925 / 01925 445 222
www.atlas4u.co.uk

PAYROLL

WHY TRY TO BE A PAYE EXPERT? Watkinson Black can provide a cost effective payroll service, releasing you to concentrate on your business. **For further details please phone: 01925 413210 or e-mail: info@warringtonaccountants.co.uk** (05/17)

TREE SURGERY

ROBERT WOOLSTENCROFT TREE Services. Commercial and Domestic tree and Landscaping services. NPTC qualified, Safe Contractor approved and fully insured. Friendly and reliable, local family business. **Contact Robert 01942 673736 or 07811 954065** (02/18)

TUITION

SPANISH LESSONS IN CULCHETH Daytime tuition in Spanish grammar for adults - beginners or revision. Experienced retired tutor; friendly relaxed lessons for singles or couples. **Tel 01925 765 962 or Mob 07922 155 275** (010/17)

WINDOWS & GLAZING

LEIGH GLASS LTD. For all of your glass requirements please contact. **Tel 01942 678440 Fax 01942 261728 email leighglass@hotmail.co.uk** (01/18)

Advertise in the Classifieds from as little as £6 per month!
Call 0800 955 5247

Promote your business to thousands of local people with a

classified for just £72 plus VAT for six months.

For more details call James Bryan on 0800 955 5247

3 MONTHS FREE MANAGEMENT!

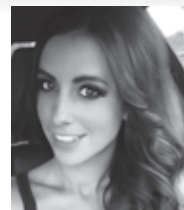
ANY NEW LANDLORD TO INSTRUCT
COURTYARD TO FULLY MANAGE YOUR
PROPERTY WILL RECEIVE 3 MONTHS
FREE MANAGEMENT

Offer applies to any new landlord to Courtyard OR if you are unhappy with your current letting agent, then:-

WE WILL TAKE CARE OF THE HANDOVER WITH NO SET UP COSTS FOR FREE!
STRESS FREE-NO HASSLE-PROVEN TRACK RECORD, IT ONLY TAKES ONE CALL
AND WE WILL DO THE REST

Myself and the team at Courtyard are here to help

Terms and Conditions apply.



Sam
Lettings Manager

Courtyard
ESTATE AGENTS
www.courtyardhomes.co.uk

T: 01925 767000 E: ask@courtyardhomes.co.uk

15 Jackson Avenue, Culcheth, Warrington WA3 4EJ



www.facebook.com/courtyardestateagents/



@courtyardhomes1

Call us for a free, no obligation valuation and marketing advice

Recommended Karndean Retailer



Karndean
Designflooring



Courtyard
Carpets

The Old Telephone Exchange, Common Lane,
Culcheth, WA3 4HA

Tel: 01925 555 820